

Video Article

Measuring the Shape and Size of Activated Sludge Particles Immobilized in Agar with an Open Source Software Pipeline

Joseph E. Weaver¹, Jon C. Williams¹, Joel J. Ducoste¹, Francis L. de los Reyes III¹

¹Department of Civil, Construction, and Environmental Engineering, North Carolina State University

Correspondence to: Francis L. de los Reyes III at fdelosr@ncsu.edu

URL: <https://www.jove.com/video/58963>

DOI: [doi:10.3791/58963](https://doi.org/10.3791/58963)

Keywords: Digital image analysis, particle size, particle shape, activated sludge, granular sludge, floc, morphology, microscopy, software, FIJI

Date Published: 11/5/2018

Citation: Weaver, J.E., Williams, J.C., Ducoste, J.J., de los Reyes III, F.L. Measuring the Shape and Size of Activated Sludge Particles Immobilized in Agar with an Open Source Software Pipeline. *J. Vis. Exp.* (), e58963, doi:10.3791/58963 (2018).

Abstract

Experimental bioreactors, such as those treating wastewater, contain particles whose size and shape are important parameters. For example, the size and shape of activated sludge flocs can indicate the conditions at the microscale, and also directly affect how well the sludge settles in a clarifier.

Particle size and shape are both misleadingly 'simple' measurements. Many subtle issues, often unaddressed in informal protocols, can arise when sampling, imaging, and analyzing particles. Sampling methods may be biased or not provide enough statistical power. The samples themselves may be poorly preserved or undergo alteration during immobilization. Images may not be of sufficient quality; overlapping particles, depth of field, magnification level, and various noise can all produce poor results. Poorly specified analysis can introduce bias, such as that produced by manual image thresholding and segmentation.

Affordability and throughput are desirable alongside reproducibility. An affordable, high throughput method can enable more frequent particle measurement, producing many images containing thousands of particles. A method that uses inexpensive reagents, a common dissecting microscope, and freely-available open source analysis software allows repeatable, accessible, reproducible, and partially-automated experimental results. Further, the product of such a method can be well-formatted, well-defined, and easily understood by data analysis software, easing both within-lab analyses and data sharing between labs.

We present a protocol that details the steps needed to produce such a product, including: sampling, sample preparation and immobilization in agar, digital image acquisition, digital image analysis, and examples of experiment-specific figure generation from the analysis results. We have also included an open-source data analysis pipeline to support this protocol.

Introduction

The purpose of this method is to provide a well-defined, repeatable, and partially-automated method for determining size and shape distributions of particles in bioreactors, particularly those containing activated sludge flocs and aerobic granules^{1,2}. The rationale behind this method were to enhance the affordability, simplicity, throughput, and repeatability of our existing in-house protocols^{3,4}, ease particle measurement for others, and facilitate sharing and comparison of data.

There are two broad categories of particle measurement analysis - direct imaging and inferential methods using such qualities as light scattering⁵. Although inferential methods can be automated and have large throughput, the equipment is expensive. In addition, while inferential methods can accurately determine the equivalent size of a particle⁶, they do not provide detailed shape information⁷.

Because of the need for shape data, we have based our method on direct imaging. While some high-throughput imaging methods exist, they have traditionally required either expensive commercial hardware or custom built solutions^{8,9}. Our method has been developed to employ common, affordable hardware and software that, although suffering from a reduction in throughput, produces far more particle images than the minimum needed for many analyses¹⁰.

Existing protocols may not specify important sampling and image acquisition steps. Other protocols may specify manual steps that introduce subjective bias (such as ad hoc thresholding¹¹). A well-defined method that specifies sampling, immobilization and image acquisition steps combined with freely available analysis software will enhance both within-lab image analysis and comparisons between labs. A major goal of this protocol is to provide a workflow and tools that should lead to reproducible results from different labs for the same sample.

Apart from normalizing the image analysis process, the data produced by this pipeline is recorded in a well-defined, well-formatted file¹² suitable for use by popular data analysis packages^{13,14}, easing experiment specific analyses (such as custom figure generation) and facilitating data sharing between labs.

This protocol is especially suggested for researchers who require particle shape data, do not have access to inferential methods, do not wish to develop their own image analysis pipeline, and wish to share their data easily with others

Protocol

1. Collect samples for particle analysis

- Determine the sample volume for specific reactors that will produce sufficient particles for statistical analysis¹⁰ (>500) while avoiding particle overlap.
 - Assume that a range of 0.5 to 2 mL per sample of mixed liquor is sufficient for activated sludge samples with a mixed liquor suspended solids (MLSS) between 250 and 5000 mg/L.
 - Otherwise, prepare three test agar plates using 0.5, 2, and 5 mL of sample (steps 1.2 through 2.7).
 - Visually estimate which (if any) sample volumes best meet the criteria listed in step 1.1.
 - If particles still overlap for the 0.5 mL sample, repeat steps 1.1.2 and 1.1.3 with three 0.5 mL samples diluted with an added 0.5, 1, and 2 mL of phosphate buffered saline to determine the degree to which a 0.5 mL sample must be diluted prior to step 2.1.

NOTE: Steps 1.1 – 1.1.4 need only be performed once per experiment, or if the reactor contents change such that subsequent measurements no longer meet the criteria listed in step 1.1.
 - Acquire a representative sample from a well-mixed portion of the reactor by grabbing ~40 mL in a beaker or 50 mL centrifuge tube, gently mixing, and immediately pouring the determined sample volume of the well-mixed grab into a 15 mL centrifuge tube. Dilute the sample, necessary, as determined by step 1.1.4.
- NOTE: The protocol can be paused here and the sample may be stored under refrigeration (4 °C) for up to 48 hours. Do not freeze the sample.
- CAUTION:** Common preservation media (e.g., formaldehyde/formamide) are not suitable. The large surface area of the plate, in combination with the open container, heat from the light source, and potentially poorly ventilated microscopy setup produce unnecessarily hazardous conditions for little gain in image quality.

2. Prepare agar plates of stained, immobilized particles

- Add 5 µL of 1% (w/v) methylene blue to each sample, then cap and gently invert at 3 least times to mix. Allow samples to stain for at least 5 but no more than 30 minutes at room temperature.
 - Prepare approximately 10 mL per sample of 7.5% (w/v) agar in deionized water.
- NOTE: Agar may be produced ahead of time and stored indefinitely if sterilized. Agarose may be substituted, but does not substantially improve images.
- Melt agar using a microwave or water bath and allow to cool slightly before use. Ensure the agar is completely melted and pours easily. Solid globules of agar will stain differently, producing poor quality images.
 - Transfer sufficient melted 7.5% (w/v) agar to the centrifuge tube to bring the total tube volume to between 6.5 and 9 mL.
 - Recap centrifuge tubes and gently invert at least 3 times to mix.
 - While pointing the cap away from oneself or in a hood, open the cap. Pour the tube contents into a 100 mm plastic Petri dish while gently rocking the dish to achieve a full, smooth coating and a visually uniform distribution of particles.
- CAUTION: The heat from the agar may produce a slight overpressure in the tube. This often produces an audible hiss and has the potential to expel small droplets of hot agar.
- Allow the plates to cool at room temperature for at least 5 minutes, until the agar solidifies.
- NOTE: The protocol may be paused here. Store plated inverted and sealed (e.g., in a sealing plastic bag or with paraffin film) for up to 48 hours under refrigeration (4 °C).

3. Acquire particle images using a stereomicroscope and digital camera

- Place the uncovered plate face up on the microscope stage of a stereomicroscope capable of 10x to 20x magnification. Illuminate the sample from below with even, diffuse light using equipment such as an LED illuminator stand or light plate.
- Open the image capture software, ensure the microscope light path is set to **Photo**, and click on the appropriate camera from the camera list.
- Adjust the microscope so that multiple particles appear in the software in the focal plane with large, well-defined edges. Use a magnification of 10-20x to measure particles while maintaining a relatively deep focal plane.
 - Temporarily remove the agar plate and place the micrometer on the stage. Adjust the fine focus until the graduations on the micrometer appear sharply focused in the image capture software.
 - If not previously calibrated, record the pixel to micro ratio for the current magnification.
 - Set the zoom to 100% by clicking **Zoom > Actual Size** and select **Options > Calibrate** then align the red calibration bar in the main viewport along the long axis of the micrometer, with the vertical bars centered on the 0 and 200 µm graduations. In the **Calibrate** dialog box, enter the current magnification level and actual length of 200 µm.
 - If already calibrated select **Magnification** from the menu bar, and the select the current magnification level and confirm the calibration.
 - Select **Measurements > Line > Arbitrary Line**. Click on the intersection of the 0 graduation and long axis of the micrometer. Click again on the intersection at 200 and the long the axis. A correct calibration should display approximately 200 µm. Delete the line by clicking on it, pressing delete, and pressing **Yes** on the confirmation box.

NOTE: The instructions given for selecting the camera and calibration are specific to the software used for this hardware. Similar functions should be available in other imaging software. The goal is to determine the pixel to micron ratio of the image for accurate particle size measurement.
- Replace the agar plate and adjust the fine focus to achieve maximum detail in the imaging software.

5. Adjust the imaging software so that maximum image quality is achieved.
 1. Increase the bit depth to the maximum value allowed, by selecting the radio button in the **Bit Depth** panel of the **Camera** sidebar. Set the software to acquire grayscale images by selecting the appropriate radio button in the **Color/Gray** panel of the **Camera** sidebar.
 2. Collapse any open sidebar panels between exposure and histogram. Reduce the gain to 1.0 and increase the exposure until a clear image appears in the viewport and until the histogram appears as a distribution that is not clipped by either end of the histogram box.
 3. Adjust the histogram to avoid over and underexposure. In the histogram panel of the camera side bar, slide the left boundary of the histogram to just outside the lowest values and the right boundary to just outside the highest values.
6. Save the image as an **uncompressed TIFF**, including magnification information in the image metadata, using the **File > Save as** dialog box, selecting the TIFF format, and ensuring that the **Save with calibration information** box is checked.
NOTE: Saving image metadata, including spatial calibration, may vary between acquisition programs. FIJI¹⁵, the underlying software used by the pipeline, understands most common variants. The important information to record is the pixel height, width, and associated unit(s).
7. Using either a mobile stage or manually moving the plate itself, select another area, which does not overlap previous images, following a path which alternates between left-to-right and right-to-left as one moves down the plate; also known as a 'lawnmower search pattern'. Repeat step 3.6 until sufficient images are produced to capture at least 500 visually estimated particles, more are better.
NOTE: Alternatives patterns (e.g., circular, random) are acceptable but should be reported. Acquiring multiple overlapping images for combination into a mosaic via digital stitching produces a resulting file size which greatly hinders downstream processing and artifacts from stitching may be introduced and is not currently recommended.
8. Retain plates until after image analysis for potential follow-up imaging. After final imaging, discard as appropriate for biological waste.

4. Measure and analyze particle silhouettes

1. Install the required image analysis software packages
 1. Install FIJI (an enhanced version of the National Institutes of Health's ImageJ v1.52e following the instructions at: <https://imagej.net/Fiji/Downloads>)
 2. Install git, if not already present, by following the instructions at: <https://git-scm.com/downloads>
 3. Acquire the particle analysis code from by cloning the git repository¹⁶.
 1. At the command line, retrieve the latest version of the code by typing:
git clone <https://github.com/joeweaver/SParMorIA-Sludge-Particle-Morphological-Image-Analysis.git>
 1. Install the analysis code following the instructions in the README.md text file found in the top-level directory of the cloned repository.
NOTE: Using git is preferred, as it will automatically retrieve the latest version of the code. If git is not available, it is also possible to download the code as a zip file on the release page at: <https://github.com/joeweaver/SParMorIA-Sludge-Particle-Morphological-Image-Analysis/releases>
 4. Edit a text file listing the directories to be processed, along with optional parameters. Refer to the examples/analysis subdirectory for a list of parameters and examples.
2. Run the analysis on the command line by typing:
<FIJI-PATH>\ImageJ-win64.exe --console -macro SParMorIA-SludgeParticle_Morphological_Image_Analysis <paramsfile>
where <FIJI-path> is the directory in which ImageJ-win64.exe is located and <paramsfile> the location of the text file describing the analysis setup
NOTE: The name of the executable may differ, depending on which operating system FIJI is installed on. Depending on the number and size of images, the analysis may take a few minutes to hours and will run automatically.
3. Perform a quality control check
 1. Examine the quality control files located in the overlay subdirectory of the specified output directory. Note images with spurious, missed, and poorly captured particles, all apparent as shaded outlines which do not match the background. Refer to **Figure 3** for examples of such. The particle data are now ready for experiment-specific analysis figure generation.
4. Reject either whole plates or individual particles by specifying in the analysis code the noted files and/or particle IDs to be ignored. Refer to examples/censoring in the repository for relevant R and Python code.
5. Generate experiment specific figures using the image analysis results for each image are stored in a TIDY¹² comma separated text file in the results subdirectory of the specified output directory. Refer to the examples/figures/R and examples/figures/Python subdirectories for examples of how to read the results files.

Representative Results

Files Generated

The process illustrated in **Figure 1** will produce two files per image analyzed. The first file is a comma separated value (CSV) text file where each row corresponds to an individual particle and the columns describe various particle metrics such as area, circularity, and solidity and defined in the ImageJ manual¹⁷. Example CSV files are included as supplemental information and in the examples/data directory.

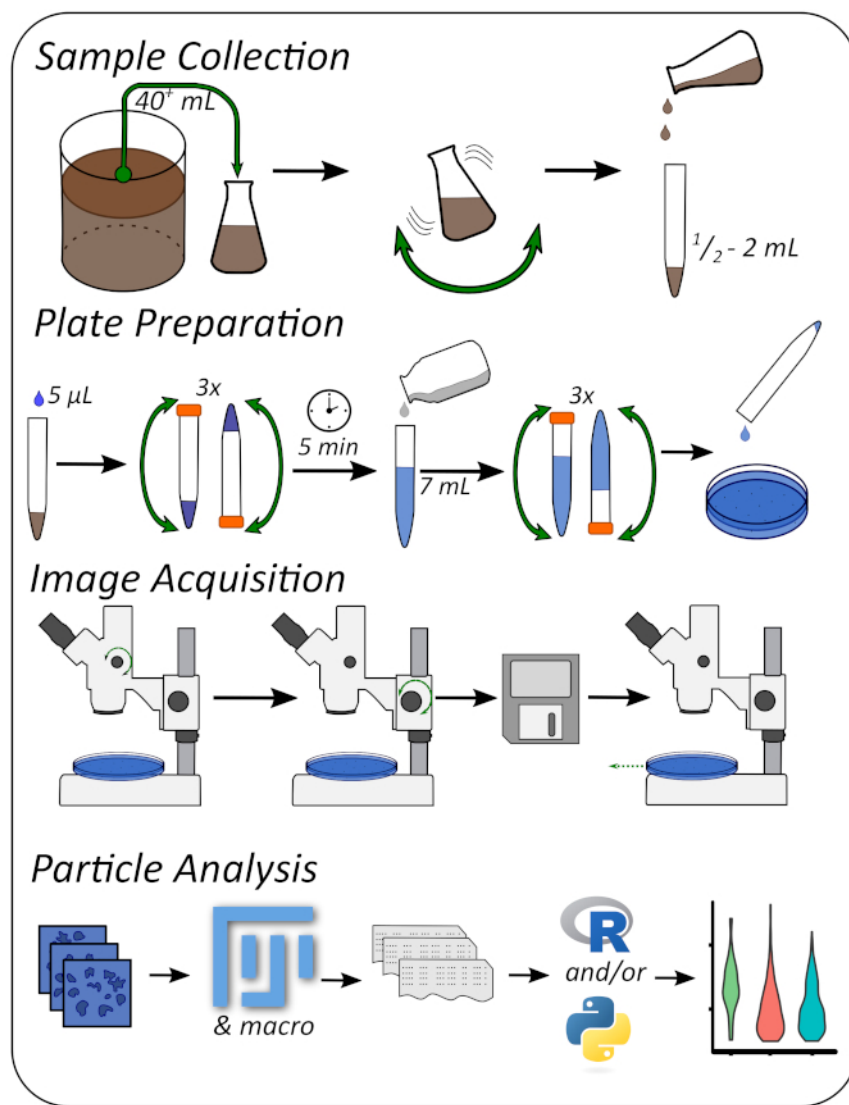


Figure 1: Graphical workflow describing the four major steps of the protocol. [Please click here to view a larger version of this figure.](#)

The second file is intended for use in quality control (QC) and is a GIF image file which overlays the original image with semi-opaque regions representing identified particles, as in **Figure 2**. The quality of particle identification and segmentation can then be quickly manually evaluated. Although no particle thresholding method is perfect¹⁸, **Figure 2** is presented as an example of an acceptable result. Poor quality images can either be retaken, or if sufficient data is available, simply removed from further processing.

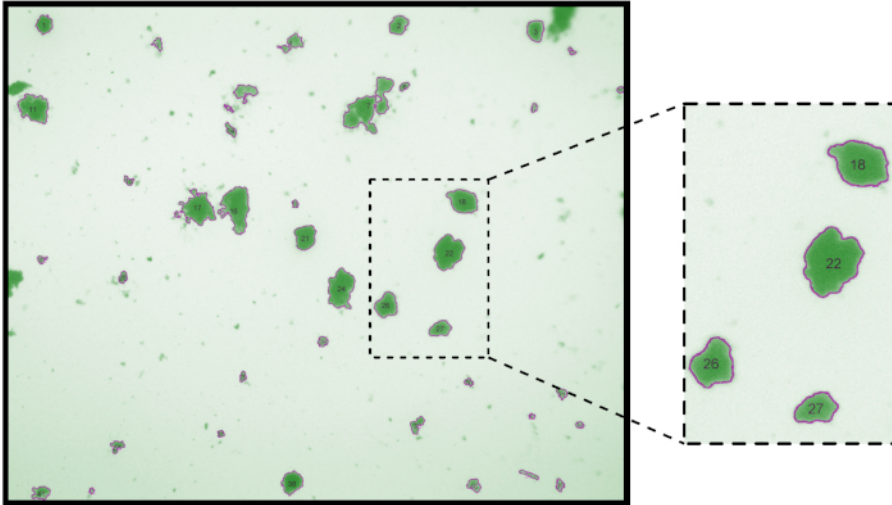


Figure 2: Example of a Quality Control (QC) gif generated by the image analysis pipeline. Magnification of main image 15x. Excerpt is digitally zoomed to show numbers identifying individual particles in the image. [Please click here to view a larger version of this figure.](#)

When evaluating QC images, there are three common errors found:

1. failure to accurately conform to the particle boundaries
2. failure to identify particles
3. artifact inclusion due either to: non-particle components (e.g., bubbles), or errors in thresholding

Examples of these errors are illustrated in **Figure 3**. Poor particle boundary identification and segmentation between particles often is a result of over-dyeing, as seen in **Figure 3a**. Poor illumination can lead to both failure to identify particles (**Figure 3b**, blue solid circle) and artefact false particles (**Figure 3b**, red dashed circle). Non-particle matter, such as bubbles, protozoa, fungi, and metazoans, such as the tardigrade in **Figure 3c** can also be spuriously identified as particles.

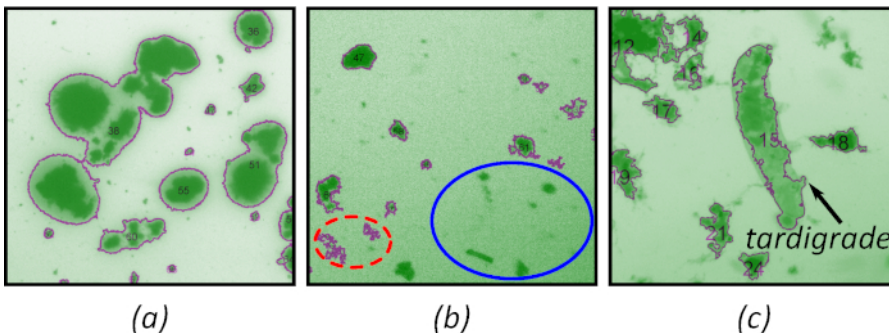


Figure 3: Common errors detected during QC analysis. (a) Poor particle boundary detection. (b) spurious particles (red dashed ellipse) and unsegmented particles (blue solid ellipse). (c) Foreign non-particle object. Magnification 15x. [Please click here to view a larger version of this figure.](#)

It is easiest to reject the entire image. However, it is possible to use the particle identifier in the QC image (**Figure 2**, inset) to reject individual particles. This approach is particularly useful when there are a handful of issues in an otherwise useful image (such as the inclusion of non-particles) **Figure 3c**. Examples of doing so in a reproducible and reportable manner are included in the examples/censoring directory of the github repository.

When a small minimum diameter is specified (<10 pixels), image noise may be spuriously identified as a particle. In those cases, the image may be still be accepted when further downstream analysis is removes their presence. As a guideline, shape data should be treated with skepticism when particles are composed of less than ~200 pixels¹⁹.

Figure Generation

The CSV files resulting from the image analysis are Tidy¹² and may be easily combined and analyzed in the researcher's preferred software package (such as pandas²⁰ with seaborn²¹ in Python or dplyr²² with ggplot2²³ in R). However, the exact figure type required will necessarily vary with research questions and result. An example of a possible figure is included below (**Figure 4**) and the corresponding code to generate it from the CSV files is available on github¹⁶.

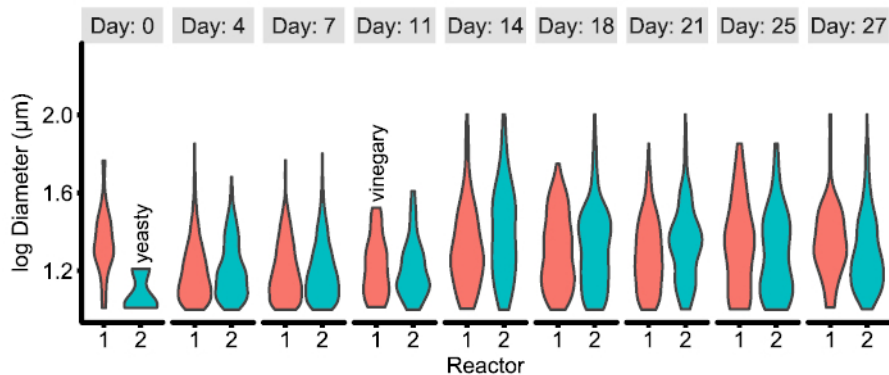


Figure 4: Example of experiment-specific figure generated from CSV data produced by the image pipeline. In this example, the particle distributions between two experimental reactors over time are displayed and combined with qualitative metadata noted by the researcher. See [examples/figures/R](#) for the generating code and data. [Please click here to view a larger version of this figure.](#)

Discussion

Although the image analysis system is fairly robust and QC steps are taken to ensure poor images are removed, proper attention to specific issues in sampling, plate preparation, and image acquisition can improve both the accuracy of the data and the proportion of images passing QC.

Sampling concentration

Assuming a representative sample has been taken, the most important step is to ensure that sufficient particles are present for representative⁹ and efficient analysis while not so concentrated that particles overlap.

This has corresponded to approximately 0.5 to 2 mL of mixed liquor over a wide range of total suspended solids, but experiment-specific determination may be necessary. Examples of overly concentrated, overly -diluted, and appropriate particle concentrations are shown in **Figure 5** as a reference. Staining is also affected by particle concentration. Over-dilution can result in overly stained, blurry particles while under-dilution may not produce particles with sufficient contrast for optimum thresholding.

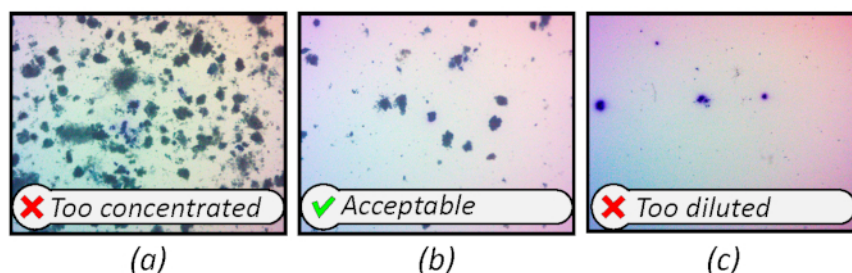


Figure 5: Reference images showing particle concentrations which are too concentrated, acceptable, and overly-diluted. Magnification 15x. [Please click here to view a larger version of this figure.](#)

Dye concentration

The amount of stain added to the sample is crucial and the correct amount may vary between sludges. Approximately 5 μ L of 1% (w/v) methylene blue per 0.5 to 2 mL of sample provides sufficient contrast for thresholding without causing 'bleeding' and obscuring the particle's shape.

There is no single ideal concentration; a balance between contrast and clarity must be chosen. **Figure 6** illustrates this tradeoff in three samples stained with 5, 25 and 50 μ L of 1% methylene blue per 2 mL of sludge. When weighing this tradeoff, the occasional poorly contrasting particle (**Figure 6a**) is preferred over poorly resolvable blobs (**Figure 6c**).

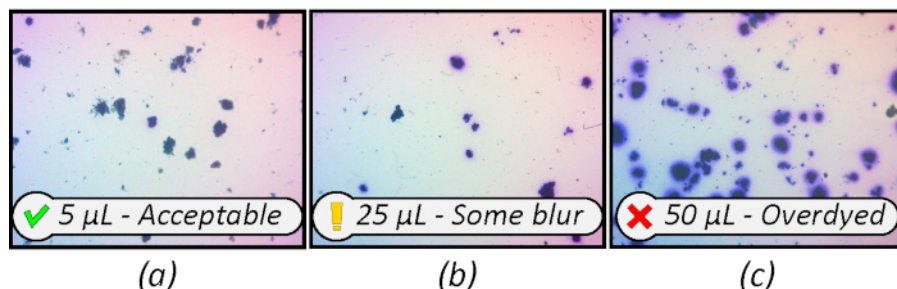


Figure 6: Increased stain concentration improves particle contrast, but also distorts the observed boundary. Magnification 15x. [Please click here to view a larger version of this figure.](#)

Plate storage

After immobilization, plates can be stored under refrigeration (4 °C) for at least 3 days. This is a conservative period during which it is unlikely that contaminating growth and dye diffusion will occur. Plates not showing any of the issues described below may still be imaged after 3 days. When stored for too long, existing particles may continue to grow and will appear in the focal plane of other particles while retaining the hue of the stain, as can be seen in **Figure 7a**. Surface contaminants, such as fungal spores, may also grow after long periods of storage. These generally will not take up the color of the stain and will appear in a different focal plane, as can be seen in **Figure 7b**. In some cases, it is unclear whether overgrowth or diffusion of the stain has occurred, such as in the bottom of **Figure 7b** and center of **Figure 7c**. Regardless of the cause, spots such as those indicate the plate has aged beyond its useful lifetime

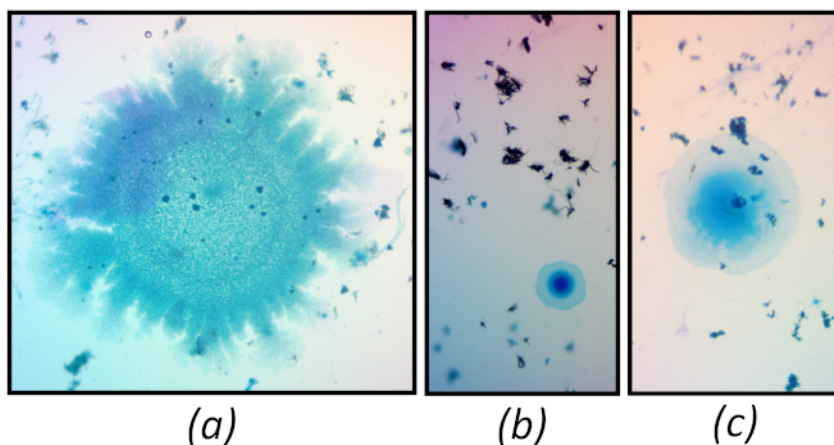


Figure 7: Reference images illustrating overgrowth signaling that a plate has been stored beyond its useful lifetime. Magnification 15x. [Please click here to view a larger version of this figure.](#)

Plate preparation

There are two issues associated with physically preparing the agar plates - overly thick agar and excessive swirling. In the first case (**Figure 8**), the particles become suspended at various depths, making it difficult to acquire images with the majority of particles in focus.

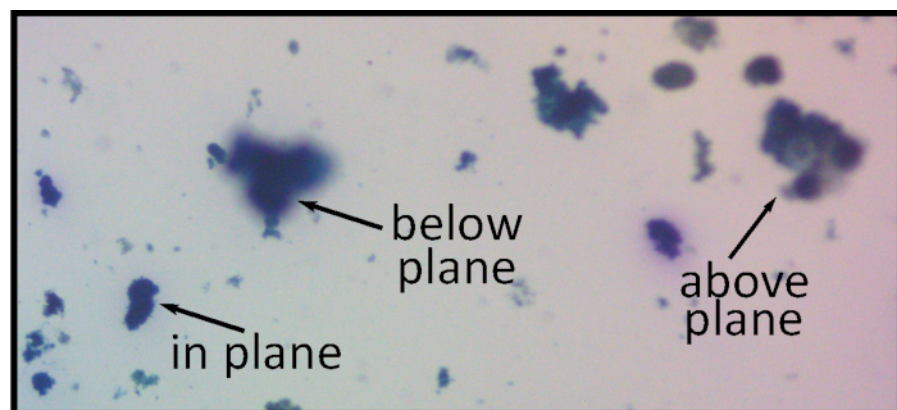


Figure 8: Using excessive amounts of agar will produce a sample thicker than the focal plane, resulting in blurry particles. Magnification 15x. [Please click here to view a larger version of this figure.](#)

In the second case, swirling produces a non-uniform distribution of particles (**Figure 9a**), biasing results from different sections of the plate (**Figure 9b,c**). Generally, no more than 7 mL of agar is required to cover a 100 mm Petri dish and only gentle hand motions are needed to evenly cover the dish.

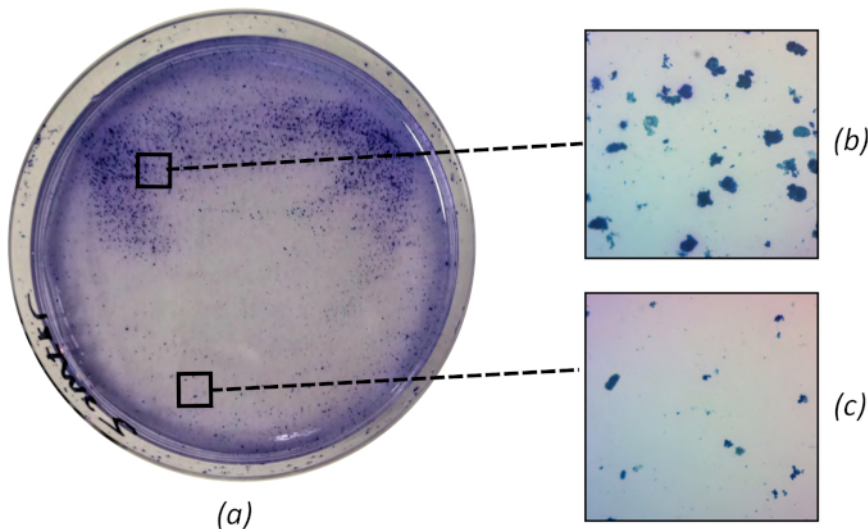


Figure 9: Overly-vigorous swirling during plate preparation will appear as non-uniform particle distributions (**a**), biasing sections of the plate towards larger (**b**) and smaller (**c**) particle distributions. Plate is 100 mm diameter, micrographs magnified 15x. [Please click here to view a larger version of this figure.](#)

Microscopic imaging

There are two major image acquisition issues affecting quality. The first issue is ensuring that the majority of particles are in the focal plane. Even at low magnification, the size of many activated sludge particles is such that without minor adjustments to coarse focus, many particles will be slightly out of focus, introducing inaccurate particle measurement. No image will contain 100% perfectly focused particles; **Figure 8** and **Figure 5b** are respective examples of poor and acceptable focus.

Exposure levels constitute the second major issue. Poorly exposed images result in lost data and poor segmentation¹¹. Further, the high contrast of the dye can produce a narrow histogram, reducing the effective dynamic range of the data. The upper and lower bounds of the histogram may be adjusted prior to capturing an image to both prevent poor exposure and increase the dynamic range. Examples of over, under, and acceptable exposures are included below in **Figure 10**.

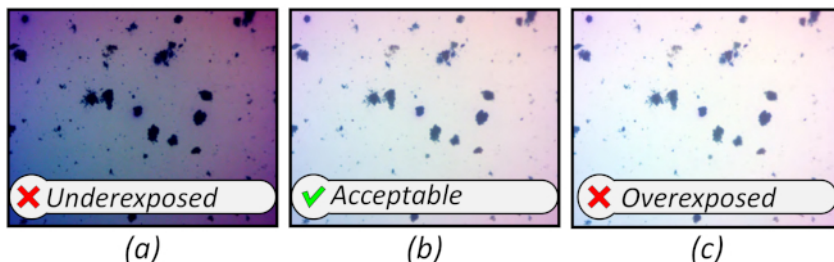


Figure 10: Reference images showing poor and acceptable image exposures. [Please click here to view a larger version of this figure.](#)

This method's advantages are that it provides specific criteria encompassing the entire process. Further, we have provided a software pipeline easing within-lab analysis and promoting comparable between-lab data. The major limitation of this method is that the requirement to keep all particles focused prevents high magnifications, limiting its utility for particles with small minor dimensions - notably filamentous structures. Future directions of this method could incorporate advanced image analysis techniques (specifically noise reduction^{24,25}, high dynamic range imaging, focus stacking^{26,27}, and machine-learning assisted thresholding, segmentation, and classification²⁸). The major image acquisition improvement would incorporate software to control mechanical stages⁸ and produce 'whole plate' mosaic archives.

Disclosures

The authors have nothing to disclose.

Acknowledgements

This work was supported by a grant from the National Science Foundation CBET 1336544.

The FIJI, R, and Python logos are used with the in accordance with the following trademark policies:

Python: <https://www.python.org/psf/trademarks/>

R: <https://www.r-project.org/Logo/> , as per the CC-BY-SA 4.0 license listed at: <https://creativecommons.org/licenses/by-sa/4.0/>

Fiji: <https://imagej.net/Licensing>

References

1. Show, K.Y., Lee, D.J., Tay, J.H. Aerobic granulation: Advances and challenges. *Applied Biochemistry and Biotechnology*. **167** (6), 1622-1640, (2012).
2. Adav, S.S., Lee, D.-J., Show, K.-Y., Tay, J.-H. Aerobic granular sludge: Recent advances. *Biotechnology Advances*. **26** (5), 411-423, (2008).
3. Williams, J.C. Initial Investigations of Aerobic Granulation in an Annular Gap Bioreactor. *North Carolina State University*. at <<https://repository.lib.ncsu.edu/handle/1840.16/2162>> (2004).
4. Moghadam, B.K. *Effect of Hydrodynamics on Aerobic Granulation*. at <<https://repository.lib.ncsu.edu/handle/1840.16/8761>> (2012).
5. Tay, J. H., Liu, Q. S., Liu, Y. Microscopic observation of aerobic granulation in sequential aerobic sludge blanket reactor. *Journal of Applied Microbiology*. **91** (1), 168-175, (2001).
6. Kelly, R.N. et al. Graphical Comparison of Image Analysis and Laser Diffraction Particle Size Analysis Data Obtained From the Measurements of Nonspherical Particle Systems. *AAPS Pharm SciTech*. **7** (3), E1-E14, at <<http://www.aapspharmscitech.org>> (2006).
7. Walisko, R. et al. The Taming of the Shrew -Controlling the Morphology of Filamentous Eukaryotic and Prokaryotic Microorganisms. *Advances in Biochemical Engineering/Biotechnology*. **149**, 1-27, (2015).
8. Campbell, R.A.A., Eifert, R.W., Turner, G.C. Openstage: A Low-Cost Motorized Microscope Stage with Sub-Micron Positioning Accuracy. *PLoS ONE*. **9** (2), e88977, (2014).
9. Dias, P.A. et al. Image processing for identification and quantification of filamentous bacteria in *in situ* acquired images. *BioMedical Engineering OnLine*. **15** (1), 64, (2016).
10. Liao, J., Lou, I., de los Reyes III, F.L. Relationship of Species-Specific Filament Levels to Filamentous Bulking in Activated Sludge. *Applied and Environmental Microbiology*. **70** (4), 2420-2428, (2004).
11. Cromey, D.W. Avoiding twisted pixels: ethical guidelines for the appropriate use and manipulation of scientific digital images. *Science and Engineering Ethics*. **16** (4), 639-67, (2010).
12. Wickham, H. Tidy Data. *Journal of Statistical Software*. **59** (10), (2014).
13. R Core Team. *R: A language and environment for statistical computing*. at <<http://www.r-project.org>> (2017).
14. van Rossum, G. *Python tutorial*. (CS-R9526). Amsterdam. (1995).
15. Schindelin, J., Arganda-Carreras, I., Frise, E. FIJI: an open-source platform for biological-image analysis. *Nature Methods*. **9** (7), 676-682 (2012).
16. Weaver, J.E. *SParMorlA: Sludge Particle Morphological ImageAnalysis*. at <<https://github.com/joeweaver/SParMorlA-Sludge-Particle-Morphological-Image-Analysis>> (2018).
17. Ferreira, T., Rasband, W. *ImageJ User Guide: IJ 1.42 r*. National Institute of Health. (2012).
18. Sezgin, M., Sankur, B. Survey over image thresholding techniques and quantitative performance evaluation. *Journal of Electronic Imaging*. **13** (1), 146-166 (2004).
19. Kröner, S., Doménech Carbó, M.T. Determination of minimum pixel resolution for shape analysis: Proposal of a new data validation method for computerized images. *Powder Technology*. **245**, 297-313, (2013).
20. McKinney, W. Data Structures for Statistical Computing in Python. *Proceedings of the 9th Python in Science Conference*. 51-56 (2010).
21. Waskom, M. et al. *seaborn: v0.5.0*. (November 2014). (2014).
22. Wickham, H. *dplyr: A Grammar of Data Manipulation*. at <<https://cran.r-project.org/web/packages/dplyr/index.html>> (2016).
23. Wickham, H. *ggplot2: Elegant Graphics for Data Analysis*. at <<http://ggplot2.org>>. Springer-Verlag. New York. (2009).
24. Riley, R.S., Ben-Ezra, J.M., Massey, D., Slyter, R.L., Romagnoli, G. Digital Photography: A Primer for Pathologists. *Journal of Clinical Laboratory Analysis*. **18** (2), 91-128, (2004).
25. Singh, S., Bray, M.A., Jones, T.R., Carpenter, A.E. Pipeline for illumination correction of images for high-throughput microscopy. *Journal of Microscopy*. **256** (3), 231-236, (2014).
26. Eastwood, B.S., Childs, E.C. Image Alignment for Multiple Camera High Dynamic Range Microscopy. *Proceedings. IEEE Workshop on Applications of Computer Vision*. **2012**, 225-232, (2012).
27. Bell, A.A., Brauers, J., Kaftan, J.N., Meyer-Ebrecht, D., Aach, T. High Dynamic Range Microscopy for Cytopathological Cancer Diagnosis. *IEEE Journal of Selected Topics in Signal Processing (Special Issue on: Digital Image Processing Techniques for Oncology)*. **3** (1), 170--184, at <www.lfb.rwth-aachen.de> (2009).
28. Jain, V. et al. Supervised Learning of Image Restoration with Convolutional Networks. *2007 IEEE 11th International Conference on Computer Vision*. 1-8, (2007).