

Video Article

# Derivation and Differentiation of Canine Ovarian Mesenchymal Stem Cells

Amanda B.T. Hill<sup>1,2</sup>, Jonathan E.B.T. Hill<sup>1</sup>, Fabiana F. Bressan<sup>3</sup>, Maria Angélica Miglino<sup>4</sup>, Joaquim M. Garcia<sup>1</sup>

<sup>1</sup>The School of Agricultural and Veterinary Studies (FCAV), Jaboticabal, São Paulo State University (UNESP)

<sup>2</sup>CRRF, Université de Montréal

<sup>3</sup>FZEA, University of São Paulo

<sup>4</sup>FMVZ, University of São Paulo

Correspondence to: Amanda B.T. Hill at [amanda.baracho.trindade@umontreal.ca](mailto:amanda.baracho.trindade@umontreal.ca)

URL: <https://www.jove.com/video/58163>

DOI: [doi:10.3791/58163](https://doi.org/10.3791/58163)

Keywords: Developmental Biology, Issue 142, Ovary, dog, stem cells, isolation, differentiation, mesenchymal stem cell, plastic adherence, homogeneous population

Date Published: 12/16/2018

Citation: Hill, A.B., Hill, J.E., Bressan, F.F., Miglino, M.A., Garcia, J.M. Derivation and Differentiation of Canine Ovarian Mesenchymal Stem Cells. *J. Vis. Exp.* (142), e58163, doi:10.3791/58163 (2018).

## Abstract

Interest in mesenchymal stem cells (MSCs) has increased over the past decade due to their ease of isolation, expansion, and culture. Recently, studies have demonstrated the wide differentiation capacity that these cells possess. The ovary represents a promising candidate for cell-based therapies due to the fact that it is rich in MSCs and that it is frequently discarded after ovariectomy surgeries as biological waste. This article describes procedures for the isolation, expansion, and differentiation of MSCs derived from the canine ovary, without the necessity of cell-sorting techniques. This protocol represents an important tool for regenerative medicine because of the broad applicability of these highly differentiable cells in clinical trials and therapeutic uses.

## Video Link

The video component of this article can be found at <https://www.jove.com/video/58163/>

## Introduction

The number of published studies that focus on stem cells has increased substantially over the past decade, a research effort that has been fueled by the collective goal of discovering powerful regenerative medicine therapies. Stem cells have two primary defining markers: self-renewal and differentiation. Mesenchymal stem cells are responsible for regular tissue turnover and have a more restricted capacity of differentiation when compared to embryonic stem cells<sup>1</sup>. Recently, many studies have shown a wide range of differentiation of MSCs, and a topic under discussion is whether differences between embryonic and adult stem cells exist at all<sup>2</sup>.

The ovarium surface epithelium is an uncommitted layer of cells, relatively less differentiated, which expresses both epithelial and mesenchymal markers<sup>3</sup>, retaining the capacity to differentiate into different types of cells in response to environmental signals<sup>4</sup>. The exact location of stem cells in the ovary is not well known; however, it has been proposed that bipotential progenitors in the tunica albuginea give rise to germ cells<sup>5</sup>. Immunological studies have hypothesized that these cells have a stromal origin<sup>6</sup> or are located in or proximal to the ovary surface<sup>7</sup>. Since mesenchymal stem cells express numerous receptors that play an important role in cell adhesion<sup>8</sup>, an experiment was designed to test the hypothesis that selecting a population of cells with rapid adhesion would isolate a population of cells clearly characterizable as mesenchymal in nature. Recently, our group reported the derivation of MSCs from ovarian tissue based on their capacity of adhesion to the plastic surface of the culture dish in the first 3 h of culture, in order to obtain a purified population of cells exhibiting rapid adhesion<sup>9</sup>. Here, we describe the developed method for mesenchymal stem cell isolation from the ovarian tissue.

## Protocol

This experiment was performed with the ovaries of four mongrel female dogs donated after elective surgery at a canine sterilization program. This experiment was approved by the Ethics Committee on the use of animals of UNESP-FCAV (protocol no. 026991/13).

## 1. Experimental Preparation

1. Prepare or purchase 500 mL of sterile Dulbecco's phosphate-buffered saline (DPBS) without calcium or magnesium.
2. Prepare a collagenase I stock solution by mixing 40 µg of the enzyme in 1 mL of DPBS. Filter using a 0.2 µm syringe filter, and store 2 mL aliquots at -20 °C.
3. Prepare the culture media from Dulbecco's modified Eagle's medium (DMEM) low glucose with 10% fetal serum and 1% of antibiotics.
4. Collect sterile materials: scissors and forceps, a tissue culture flask, dishes, tubes, and 10 mL and 5 mL pipettes.

5. Use standard cell culture laboratory equipment: a biological safety cabinet (BSC), a cell culture incubator set at 5% CO<sub>2</sub> and 38 °C, and a centrifuge.
6. Clean the BSC: with gloved hands, sterilize it with 70% EtOH, using UV lights.

## 2. Isolation of Mesenchymal Stem Cells from the Ovary

1. After surgery, keep the ovaries in PBS on ice in a conical tube, until their arrival at the lab.
2. Fill two 100 mm Petri dishes with 10 mL of PBS.
3. Remove the ovaries from the tube and transfer them to the first Petri dish with PBS. Wash them with mixing movements.
4. Gently retrieve the ovary and place it into another dish. With sterile tweezers and scissors, mince the tissue into very small pieces, approximately 1 mm in size.
5. Transfer the ovarian tissue to a 35 mm Petri dish and add 2 mL of collagenase. Mince the tissue a little more.
6. Place the Petri dish in the incubator at 38 °C for 3 h and gently shake the Petri dish with circular movements every 20 min.
7. After 3 h, remove the Petri dish from the incubator.
8. Transfer the contents of the dish to a 15 mL tube. Add 5 mL of expansion media.
9. Gently invert the tube before centrifugation. Centrifuge the tube at 2100 x g for 7 min. Remove the supernatant and resuspend the pellet with 3 mL of expansion media.
10. Transfer the pellet to a T25 bottle. Place the bottle in the incubator with 5% CO<sub>2</sub> at 38 °C for 3 h.  
NOTE: The most important part of the procedure is to change the media after 3 h of incubation.
11. Remove the bottle from the incubator and remove the media with the remaining tissue. Add 3 mL of fresh expansion media to the bottle.
12. Change the media every 48 h and observe the bottle for cellular confluence.  
NOTE: The main steps of the procedure can be observed in **Figure 1**.

## 3. Expansion of Mesenchymal Stem Cells from the Ovary

1. **Cell passage**
  1. When the cells reach confluence, remove the media from the bottle.
  2. Wash the bottle with 3 mL of PBS. Remove the PBS.
  3. Add 1.5 mL of trypsin and put the bottle in the incubator at 38 °C for 3 min. Gently tap the bottle to help the cells to detach.  
NOTE: Cells should reach confluence approximately 5 - 7 d after the initial plating.
  4. Add 3 mL of expansion media and transfer the contents to a conical tube.
  5. Centrifuge the tube at 2100 x g for 7 min. Remove the supernatant and add 1 mL of expansion media.
  6. Gently homogenize the contents of the tube.
  7. Take an aliquot of 10 µL of the sample to perform cell counting and put the tube with the cells back in the incubator.
  8. Place 10 µL of the mix into the hemocytometer.
2. **Counting the cells**
  1. Use the microscope's 10X objective and focus on the grid lines of the hemocytometer.
  2. Count the cells in five small squares (**Figure 2**).
  3. Multiply the counted number by 50,000 to estimate the number of cells per milliliter.

## 4. Differentiation of Mesenchymal Stem Cells from the Ovary

NOTE: Differentiation assays were performed according to the guidelines established in Hill *et al.*<sup>9</sup>.

1. Seed  $1.0 \times 10^4$  cells per well, in triplicate, using a 4-well culture dish.
2. Add 1 mL of expansion media.
3. Gently agitate the dish with circular movements.
4. After 24 h, replace the culture media with the desirable differentiation media.
5. For osteogenic, adipogenic, and chondrogenic differentiation, incubate the cells with the induction media for 30 d, with media replacement every 3 d. Specific differentiation kits were used for each of these assays.
6. For neurogenic lineage differentiation, incubate the cells for 10 d in the induction media, with media replacement every 3 d. The media used here contained DMEM low glucose, 2 mM valproic acid, 1 µM hydrocortisone, 10 µM forskolin, 5 mM potassium chloride, 5 µg/mL insulin, and 200 µM butylated hydroxyanisole.
7. For endoderm precursors, incubate for 5 d in endoderm media as per the reagent manufacturer's instructions.
8. For primordial germ cell lineage differentiation, incubate the cells in the induction media for 14 d, with media replacement every 3 d. The media used here contained DMEM, 10% FBS, 1 mM sodium pyruvate, 10 ng/mL LIF, 1 mM nonessential amino acids, 2 mM L-glutamine, 5 µg/mL insulin, 0.1 mM β-mercaptoethanol, 60 µM putrescine, 20 µg/mL transferrin, 10 ng/mL mouse epidermal growth factor, 1 ng/mL human basic fibroblast growth factor, 40 ng/mL human glial cell line-derived neurotrophic factor, and 15 mg/L penicillin.

## Representative Results

### Mesenchymal Stem Cell Isolation from Canine Ovary:

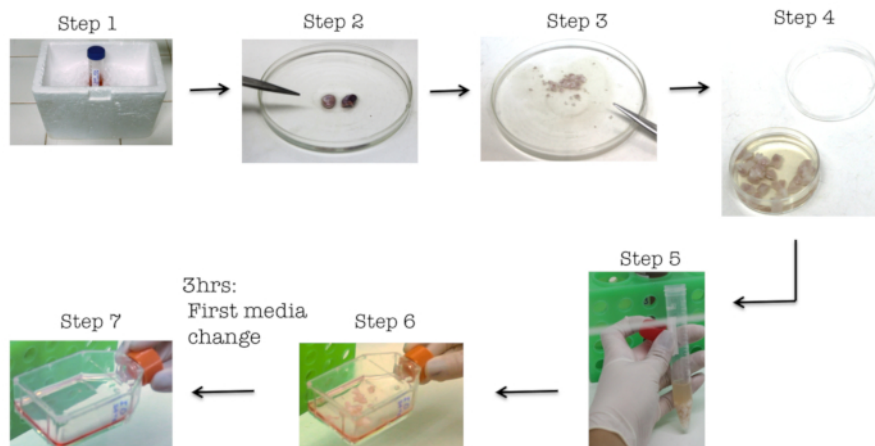
The ovarian MSC isolation procedure is summarized in **Figure 1**. After surgery, tissue mincing, collagenase digestion, and a media change 3 h after the beginning of the culture, a putative MSC population with rapid plastic-adhesive properties was successfully isolated from canine ovarian tissue. The harvested cells rapidly adhered to the plastic surface of the culture dish and grew into a morphologically homogeneous monolayer culture with typical MSC-like morphology (**Figure 3**).

### Characterization of Ovarian MSC In Vitro

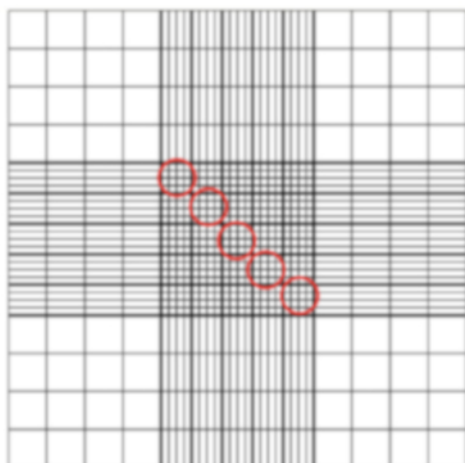
The goal of MSC characterization is to ensure that isolated cells conform to standard MSC criteria. These include adherence to plastic, a positive detection of mesenchymal surface markers, and an absence of hematopoietic surface markers, as well as the capacity to undergo mesodermal differentiation.

As shown in **Figure 3**, ovarian-derived cells were adherent to the plastic and exhibited a fibroblast-like morphology, fulfilling the first criterion that defines MSCs. Moreover, the isolated cells showed the expression of transcripts for the canine MSC markers CD44, CD90, and CD105. In addition, MSC-specific cell surface antigens CD90 and CD44 were detected by early passage FACS analysis and immunocytochemistry. The absence of the markers CD45 and CD34, which are hematopoietic-specific cell surface antigens, was also confirmed by the same techniques (**Figure 4**). This further confirmed that the ovary contains cells expressing an MSC-specific phenotype<sup>9</sup>. The antibodies that were used in this experiment for canine MSC characterization are listed in the **Table of Materials**.

The next step in the characterization of MSCs is to attain proof of their ability to differentiate into mesodermal lineages. After 30 days of exposure and culture in lineage-specific differentiation protocols, staining was performed to identify a commitment to different lineages (**Figure 5A**). A commitment to the osteogenic lineage was confirmed through Von Kossa staining, which identified calcium deposits. Safranin O proteoglycan staining confirmed chondrogenic commitment, and Oil Red O lipid staining confirmed adipogenic commitment. Continuing the investigation of the differentiability of these cells, they were able to undergo differentiation into the ectodermic lineage, as shown by immunostaining for two neuroectodermal stem cell markers:  $\beta$ -tubulin and Nestin, following exposure of ovary-derived MSCs to the neuronal lineage differentiation protocol for 10 days (**Figure 5C**). Transcripts for SOX17 and CD184, as well as cell morphologies specific to the endodermal lineage, were observed after exposure to specific differentiation protocols for 5 days (**Figure 5B**). Finally, after 14 days of exposure of ovarian-derived MSCs to germ cell induction media, OCT 4 and DDX4 were identified (**Figure 5D**). Together, these results support a robust and diverse capacity of differentiation for MSCs derived from ovarian tissue, when exposed to specific differentiation protocols<sup>9</sup>.



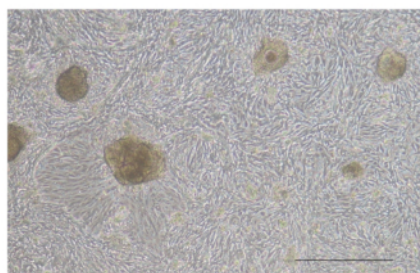
**Figure 1: Main steps of the isolation procedure.** (1) After surgery, transfer the ovaries to sterile tubes with PBS, on ice. (2) In order to wash the ovaries, they should be transferred to a 100 mm plate with PBS. (3) Mince the tissue into small pieces, approximately 1 mm in size. (4) In order to liberate the cells from the tissue, transfer the pieces of tissue to 35 mm plates and add collagenase for a 3 h digestion in the incubator. (5) Transfer the contents of the plate to a conical tube for centrifugation. (6) Plate the pellet in a T25 bottle and incubate for 3 h. (7) After the first 3 h of culture, change the culture media. [Please click here to view a larger version of this figure.](#)



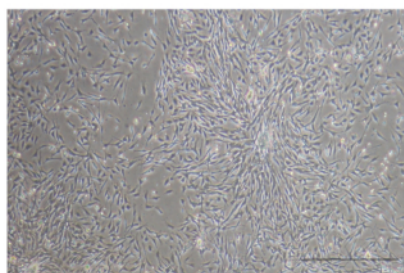
**Figure 2: Hemocytometer.** The five small squares to be counted are marked in red.

### Initial culture in confluence

Changed media after 48h



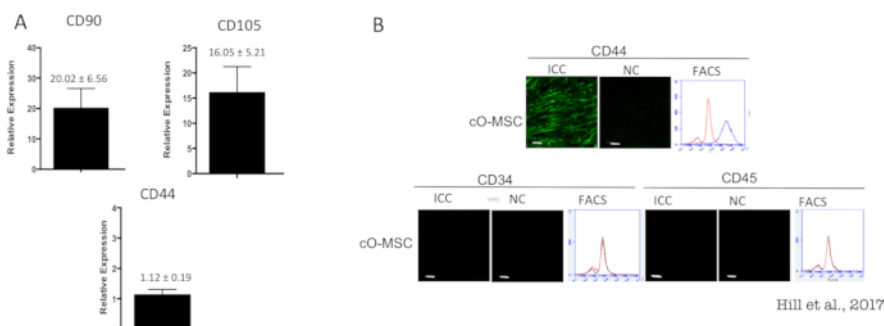
Changed media after 3h



Hill et al., 2017

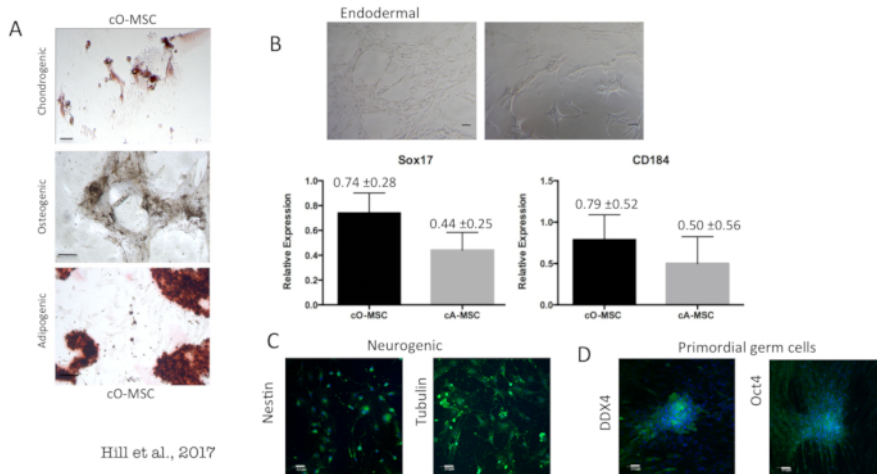
**Figure 3: Cell morphology.** When the media was changed 3 h after the beginning of the culture it resulted in a homogeneous population of mesenchymal cells, which exhibited a fibroblast-like morphology. On the contrary, when the first media change is done after 48 h other cell types besides the fibroblast-like cells can be observed. The scale bar = 1,000  $\mu$ m. This figure has been modified from Hill *et al.*<sup>9</sup>. [Please click here to view a larger version of this figure.](#)

### Molecular characterization



**Figure 4: Molecular profile of ovarian MSC.** (A) The isolated cells exhibited a classic MSC marker profile, being positive for three MSC markers by real-time PCR (CD90, CD105, and CD44). (B) By protein analysis, CD44 was positive in those cells, and they lacked the expression of two hematopoietic markers (CD34 and CD45). The scale bar = 70  $\mu$ m. This figure has been modified from Hill *et al.*<sup>9</sup>. [Please click here to view a larger version of this figure.](#)

## Differentiation



**Figure 5: Differentiation of ovarian MSC.** The isolated cells were able to differentiate into (A) mesodermal lineages (chondrogenic, osteogenic, and adipogenic; the scale bar = 70  $\mu$ m). Moreover, the cells were able to differentiate into both (B) endodermal precursors (the scale bar = 70  $\mu$ m) and (C) neurogenic lineages (the scale bar = 50  $\mu$ m). Interestingly, the cells underwent (D) primordial germ cell differentiation, demonstrating a wide capacity of differentiation for ovarian mesenchymal stem cells. This figure has been modified from Hill *et al.*<sup>9</sup>. [Please click here to view a larger version of this figure.](#)

## Discussion

Herein we provide evidence that MSCs can be isolated from canine ovarian tissue, which is considered biological waste after ovariectomy. Due to the fact that many cell types can be found in the ovary, we proposed a protocol to select MSCs based on their rapid adherence to plastic, which successfully selected cells that grew in a monolayer with a fibroblast-like morphology.

The first report of the derivation of MSCs from bone marrow was based on the plastic adhesion capacity of the MSCs during the first 48 h of culture<sup>11</sup>; however, it has been reported that this method has the potential to isolate a heterogeneous population, phenotypically and functionally, at least for bone marrow<sup>12</sup>. The proposed culture method also selects cells by plastic adhesion capacity and isolates mesenchymal cells from a tissue that has many cell types, without the necessity of sorting the desirable cells. Due to the fact that mesenchymal stem cells express numerous receptors that play an important role in cell adhesion<sup>8</sup>, it was hypothesized that if a population of cells with rapid adhesion were selected, it would result in a more homogeneous population at the first passage, with a reliable MSC profile. The representative results provide evidence that a shorter duration plastic adhesion assay can be used to isolate a morphologically homogeneous population of MSCs at the first passage, without the necessity of waiting for more advanced passages or cell sorting.

A critical step in this protocol is to change the media 3 h after the beginning of the culture. As shown in the representative results section, the stem cells obtained from canine ovaries met the three criteria established for the characterization of MSCs: they exhibited a fibroblast-like morphology, were positive for the presence of MSC markers, and were able to differentiate into such mesenchymal lineages as osteogenic, adipogenic and chondrogenic lineages. Cells isolated in this experiment were also successfully differentiated into endodermal precursors, ectodermal lineages, and primordial germ cell lineages. The cells should reach confluence approximately 5 - 7 days after the initial plating. The cells from animals with an advanced age may grow more slowly than those of young animals, and of those, fewer cells may adhere to the plastic. In these cases, the concentration of FBS in the media can be increased to 15%.

Therefore, the selection for MSCs based on the cells with more rapid adherence capacity represents an inexpensive, streamlined, and effective procedure. From a therapeutic perspective, it is most important to highlight that these cells represent a promising tool for regenerative medicine, especially because of their wide range of differentiation.

## Disclosures

The authors have nothing to disclose.

## Acknowledgements

The authors acknowledge the canine sterilization program at UNESP-FCAV for kindly providing the ovaries. This work was supported by grants from FAPESP (process no. 2013/14293-0) and CAPES.

## References

- Gazit, Z., Pelled, G., Sheyn, D., Kimelman, N., Gazit, D. Mesenchymal stem cells. In *Handbook of Stem Cells (2nd Edition)*. Edited by Atala, A., Lanza, R., 513-527, Academic Press (2013).

2. Zipori, D. The nature of stem cells: state rather than entity. *Nature Reviews Genetics*. **5** (11), 873-878 (2004).
3. Auersperg, N., Wong, A.S., Choi, K.C., Kang, S.K., Leung, P.C. Ovarian surface epithelium: biology, endocrinology, and pathology. *Endocrine Reviews*. **22** (2), 255-288 (2001).
4. Ahmed, N., Thompson, E.W., Quinn, M.A. Epithelial-mesenchymal interconversions in normal ovarian surface epithelium and ovarian carcinomas: an exception to the norm. *Journal of Cellular Physiology*. **213** (3), 581-588 (2007).
5. Bukovsky, A., Svetlikova, M., Caudle, M.R. Oogenesis in cultures derived from adult human ovaries. *Reproductive Biology and Endocrinology*. **3** (1), 17 (2005).
6. Gong, S.P. *et al.* Embryonic stem cell-like cells established by culture of adult ovarian cells in mice. *Fertility and Sterility*. **93** (8), 2594-2601 (2010).
7. Johnson, J., Canning, J., Kaneko, T., Pru, J.K., Tilly, J.L. Germline stem cells and follicular renewal in the postnatal mammalian ovary. *Nature*. **428** (6979), 145 (2004).
8. Deans, R.J., Moseley, A.B. Mesenchymal stem cells: biology and potential clinical uses. *Experimental Hematology*. **28** (8), 875-884 (2000).
9. Trindade Hill, A.B.T., Therrien, J., Garcia, J.M., Smith, L.C. Mesenchymal-like stem cells in canine ovary show high differentiation potential. *Cell Proliferation*. **50** (6), 12391 (2017).
10. Dominici, M.L.B.K. *et al.* Minimal criteria for defining multipotent mesenchymal stromal cells. The International Society for Cellular Therapy position statement. *Cytotherapy*. **8**, 4315-317 (2006).
11. Friedenstein, A.J., Piatetzky-Shapiro, I.I., Petrakova, K.V. Osteogenesis in transplants of bone marrow cells. *Development*. **16** (3), 381-390 (1966).
12. Kuznetsov, S.A. *et al.* Single-colony derived strains of human marrow stromal fibroblasts form bone after transplantation *in vivo*. *Journal of Bone and Mineral Research*. **12** (9), 1335-1347 (1997).