

Video Article

# Heart Dissection in Larval, Juvenile and Adult Zebrafish, *Danio rerio*

Corinna Singleman<sup>1</sup>, Nathalia G. Holtzman<sup>1</sup>

<sup>1</sup>Department of Biology, Queens College, City University of New York

Correspondence to: Nathalia G. Holtzman at [nathalia.holtzman@qc.cuny.edu](mailto:nathalia.holtzman@qc.cuny.edu)

URL: <http://www.jove.com/video/3165>

DOI: [doi:10.3791/3165](https://doi.org/10.3791/3165)

Keywords: Developmental Biology, Issue 55, zebrafish, *Danio rerio*, heart, dissection, cardiac, morphology, anatomy, juvenile, adult

Date Published: 9/30/2011

Citation: Singleman, C., Holtzman, N.G. Heart Dissection in Larval, Juvenile and Adult Zebrafish, *Danio rerio*. *J. Vis. Exp.* (55), e3165, doi:10.3791/3165 (2011).

## Abstract

Zebrafish have become a beneficial and practical model organism for the study of embryonic heart development (see recent reviews<sup>1-6</sup>), however, work examining post-embryonic through adult cardiac development has been limited<sup>7-10</sup>. Examining the changing morphology of the maturing and aging heart are restricted by the lack of techniques available for staging and isolating juvenile and adult hearts. In order to analyze heart development over the fish's lifespan, we dissect zebrafish hearts at numerous stages and photograph them for further analysis<sup>11</sup>. The morphological features of the heart can easily be quantified and individual hearts can be further analyzed by a host of standard methods. Zebrafish grow at variable rates and maturation correlates better with fish size than age, thus, post-fixation, we photograph and measure fish length as a gauge of fish maturation. This protocol explains two distinct, size dependent dissection techniques for zebrafish, ranging from larvae 3.5mm standard length (SL) with hearts of 100µm ventricle length (VL), to adults, with SL of 30mm and VL 1mm or larger. Larval and adult fish have quite distinct body and organ morphology. Larvae are not only significantly smaller, they have less pigment and each organ is visually very difficult to identify. For this reason, we use distinct dissection techniques.

We used pre-dissection fixation procedures, as we discovered that hearts dissected directly after euthanization have a more variable morphology, with very loose and balloon like atria compared with hearts removed following fixation. The fish fixed prior to dissection, retain *in vivo* morphology and chamber position (data not shown). In addition, for demonstration purposes, we take advantage of the heart (myocardial) specific GFP transgenic *Tg(myl7:GFP)<sup>twu34</sup>*<sup>(12)</sup>, which allows us to visualize the entire heart and is particularly useful at early stages in development when the cardiac morphology is less distinct from surrounding tissues. Dissection of the heart makes further analysis of the cell and molecular biology underlying heart development and maturation using *in situ* hybridization, immunohistochemistry, RNA extraction or other analytical methods easier in post-embryonic zebrafish. This protocol will provide a valuable technique for the study of cardiac development maturation and aging.

## Video Link

The video component of this article can be found at <http://www.jove.com/video/3165/>

## Protocol

Zebrafish were raised using standard protocols<sup>13</sup> in the Queens College Animal Facility at 28°C. Individual fish pairs or group matings should be performed and the resulting embryos cleaned and stored in a 28°C incubator. Fish health should be examined daily. At 5-day post fertilization (dpf), fish should be separated into tanks at a 10-15 fish density and entered into the fish facility nursery. For the protocol presented here zebrafish were collected at larva through adult stages: 15, 30, 45, 60, 90, 180 dpf.

### 1. Zebrafish subject collection and fixation

1. Remove fish from habitat tank using net and place in 0.2% Tricaine to anesthetize.
2. Place anesthetized fish in ice water for 15 minutes to euthanize.
3. Make fresh 4% paraformaldehyde (PFA) in 1x Phosphate-buffered saline (PBS).
4. Incubate collected fish in 4% PFA for 1-2 hours at RT then overnight at 4°C in a petri dish wrapped in parafilm. This keeps the fish flat and makes later dissection much easier.
5. After fixation, rinse twice in PBS with Tween (PBT). Fish can be kept in PBT at 4°C for up to 10 days.

### 2. Measuring fish and dissection

1. Place single fish into petri dish half filled with fresh PBS and lay it on its right side.
2. Measure length of fish from snout to base of tail (the caudal peduncle), not including tail fins, using a digital mm caliper (Figure 1). This is the standard length (SL).

3. Each fish can be assigned a number/letter combination to allow an individual fish and the resulting dissected heart to be tracked for later analysis. Data, including parental stock number, age at fixation, SL measurements, were entered into a spreadsheet and organized based on these labels.
4. Before dissection, label PCR tube strips with assigned tracking number and fill with PBT or other solution appropriate for further analysis.
5. Orient the fish ventral side up in petri dish while stabilizing the body with forceps holding the head between the eyes and gills (Figure 2).

*Smaller fish (smaller than 12mm SL):*

4. a) Using sharp forceps, or a micro-needle in a pin holder, remove the pectoral muscles and fins from the body to reveal the heart. The constant motion of the forceps during dissection can cause currents in the PBT that move the fish. This is particularly problematic for smaller fish, thus a micro-needle can be used to remove pectoral muscles and fins and open the body cavity.
5. a) Gently use the forceps to scoop the heart out of the cavity from under the atrium. Alternately, in some fish you may be able to remove the heart by gently pulling the bulbous out and the rest of the heart will follow. Be careful of the location of the atrium if using this technique as it can easily be damaged. If there is extra tissue that comes with the heart, that is fine and can be cleared after.
6. a) If the fish contains a fluorescent cardiac marker such as Tg(myf7:GFP)<sup>twu34</sup>, use fluorescent scope for dissection and verify removal of the heart by fluorescence (Figure 3).
7. a) Once the heart is removed from the cavity, use the forceps to hold the heart and a micro-needle to remove extra non-cardiac tissue and the epicardial lining from the outside of the heart.

*Larger fish (greater than 12mm SL):*

4. b) Using spring handled micro-scissors, make three incisions of less than 1mm deep: 1- transverse cut through the gills 2- transverse cut at anterior belly 3- sagittal cut on ventral side connecting both cuts (Figure 4).
5. b) Using sharp forceps remove the pectoral muscles and fins from the body to open the body cavity and reveal the silvery tissue of the pericardium (Figure 5A). Remove this pericardial tissue and the heart will become visible (Figure 5B).
6. b) Use the micro-scissors to cut the artery connected to the bulbous arteriosus, located superior to the heart. Once this artery is cut, put the forceps tips under the atrium, use the forceps to scoop the heart out of the cavity. If there is extra tissue that comes with the heart, that is fine and can be removed later.
7. b) Once the heart is removed from the cavity, use the two forceps to hold the heart and remove extra tissue, or one pair of forceps to hold the heart and a micro-needle to remove extra, non-cardiac tissue. The epicardial lining, evident by its black pigmentation, can be removed from the outside of the heart if desired by gently scraping the tissue.

### 3. Photography of hearts

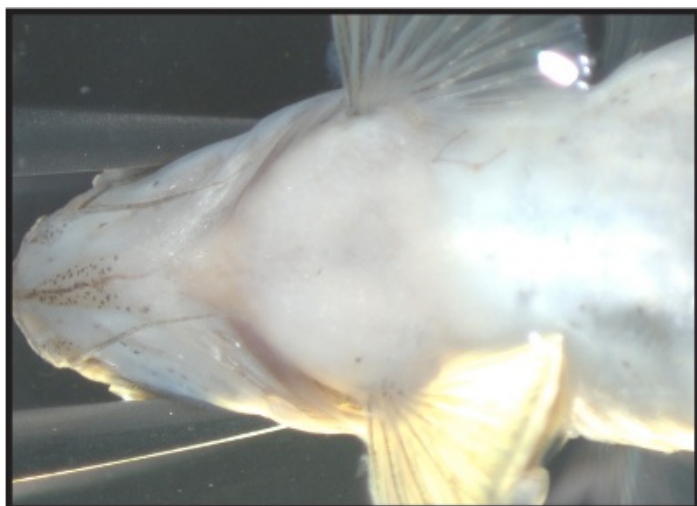
1. Prepare an 23g/L nutrient agar petri dish and cover solidified agar with PBS.
2. Using the forceps, make a well in the agar that allows the heart to rest in the desired orientation for photographing.
3. Remove the heart from the PCR tube by holding the tip of the bulbous with the forceps firmly. Place the heart in the agar dish.
4. Orient the heart in agar to photograph. The sample can be rotated after each picture to all possible orientations (Figure 6).
5. Use overhead light and short exposure time to photograph the hearts. Make adjustments for light quality using the exposure as necessary to obtain the best photograph.

### 4. Representative Results:

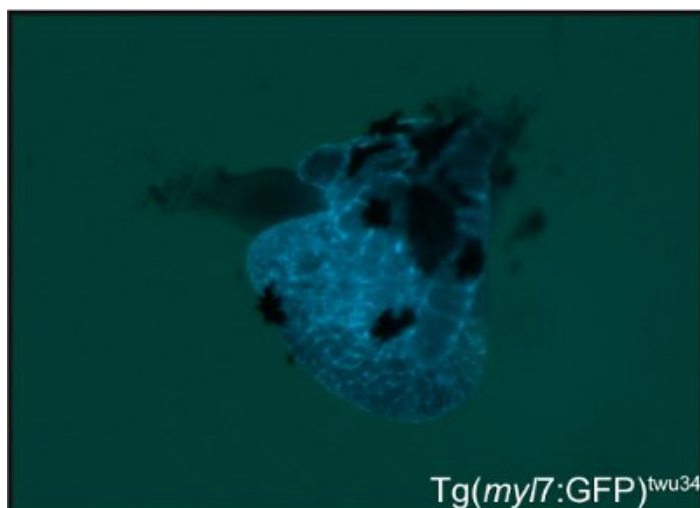
An example of a well-dissected clean heart is shown in multiple orientations in Figure 6. Each heart will have some differences in overall morphology, but the heart should be complete, containing an intact ventricle, atrium and bulbous arteriosus. Some examples of this variation in overall morphology are shown in Figure 7. The black spotted epicardial tissue can also removed from the heart.



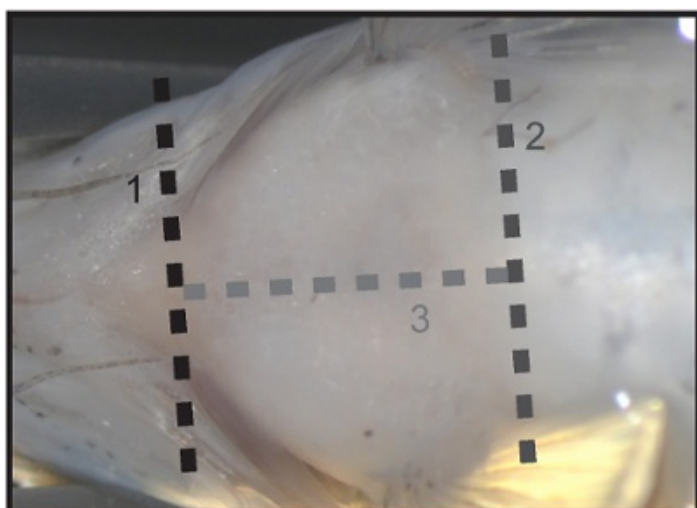
**Figure 1.** Measure the fish from snout to caudal peduncle using a digital mm caliper.



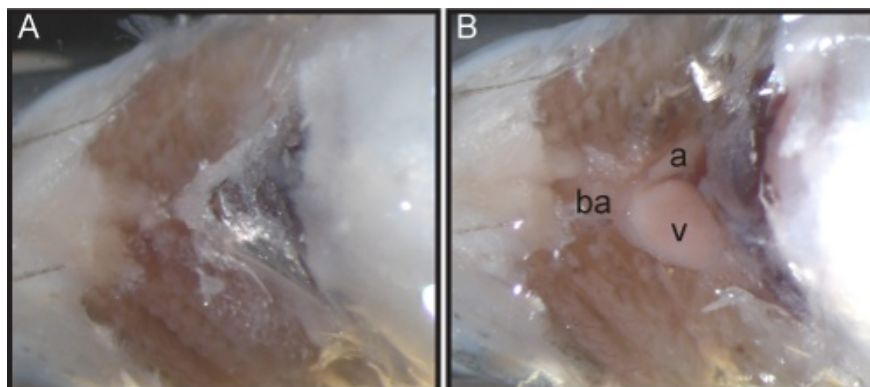
**Figure 2.** Hold the fish with forceps between the eyes and gills.



**Figure 3.** A cardiac specific fluorescent transgenic marker such as  $Tg(myI7:GFP)^{twu34}$ , shown here, can aid in visualizing hearts dissected from smaller fish.



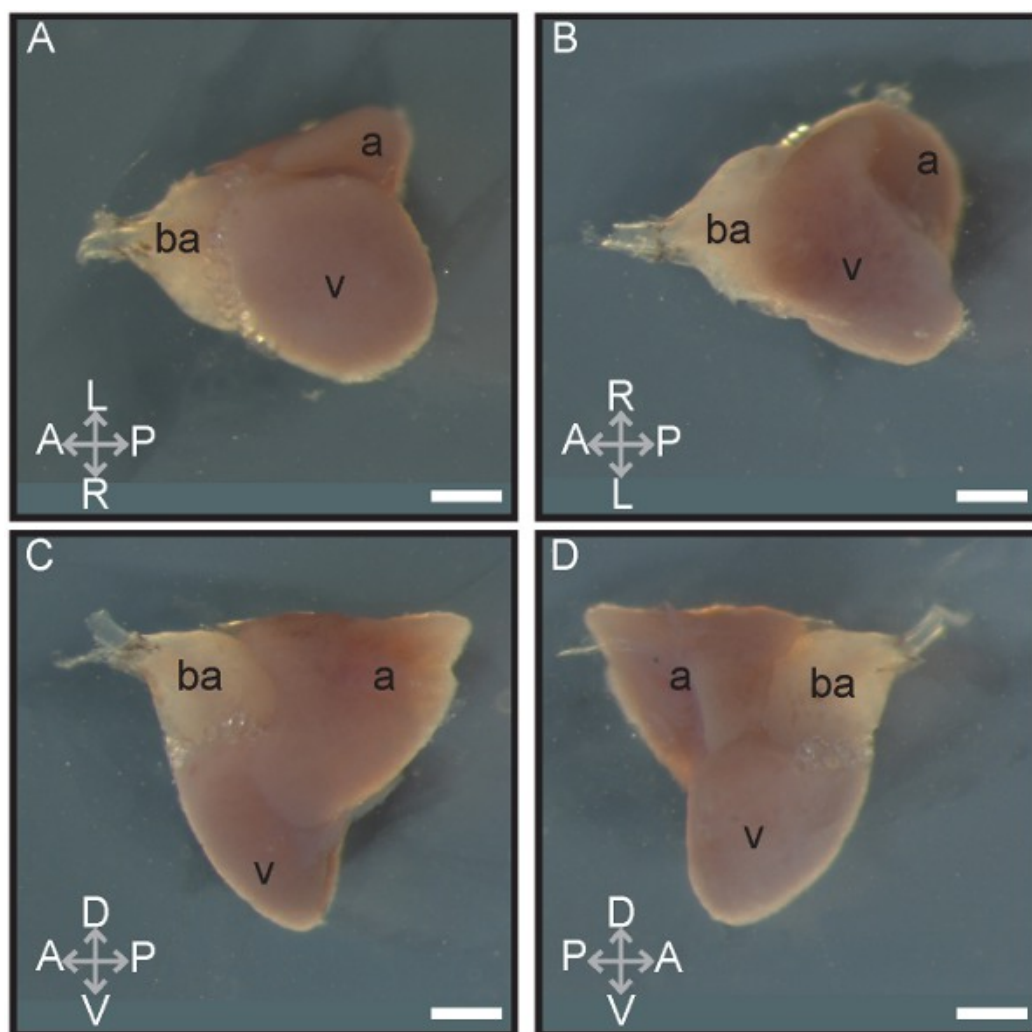
**Figure 4.** Three incisions to remove the pectoral muscles and skin: 1- transverse cut through the gills 2- transverse cut at anterior belly 3- sagittal cut on ventral side connecting both cuts.



**Figure 5.** Black letters label the chambers of the heart: bulbous arteriosus (ba), ventricle (v), and atrium (a).

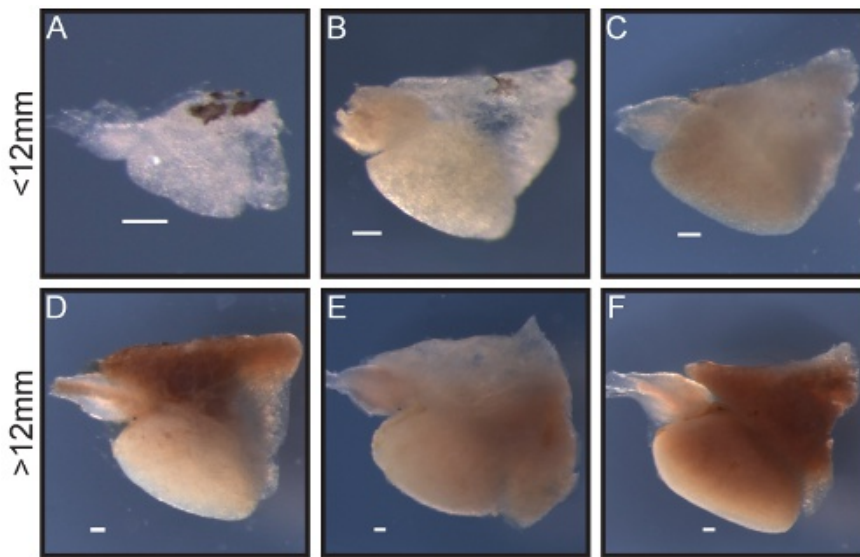
A- The upper body cavity is open to show the silvery tissue of the pericardium.

B- After removing the pericardium, the heart is visible and easily removed.



**Figure 6.** Different orientations of the heart are shown. Black letters label the chambers of the heart: bulbous arteriosus (ba), ventricle (v), and atrium (a). Grey arrows indicate location and orientation of the heart in reference to its normal location in the body: anterior (A), posterior (P), dorsal (D), ventral (V), left (L), and right (R). Scale bar indicates 400µm.

- A- ventral view of the heart
- B- dorsal view of the heart
- C- lateral view from the left side
- D- lateral view from the right side



**Figure 7.** Morphology of hearts of different sizes is shown. Black letters label the chambers of the heart: bulbous arteriosus (ba), ventricle (v), and atrium (a). Scale bar indicated 400 µm.

- A-C- Hearts from fish with SL less than 12mm
- D-F- Hearts from fish with SL greater than 12mm

## Discussion

These methods for dissection of the zebrafish heart of post-embryonic fish allows for the complete removal of an undamaged heart. While this technique is straightforward and provides guides for external cuts that will prevent damaging the heart, a steady hand is essential for smaller fish.

A key step during the dissection is to identify the silvery pericardium as the heart is directly within this sac. Visualizing the pericardium provides an important marker for finding and ultimately removing the heart from the body cavity. Further, cutting the artery superior to the bulbous arteriosus will prevent the inadvertent removal of the bulbous from the rest of the heart. In larger fish it is sometimes necessary to remove the lower portion of the body to keep the head and upper body containing the heart stable during dissection. This can be done by continuing the lower transverse cut through the body cavity and spine with scissors.

Dissection of the zebrafish heart is not only useful for similar studies to our own maturation analysis, but may be useful in study of disease states of the zebrafish, RNA isolation in the heart, and in other analytical research utilizing the heart.

## Disclosures

No conflicts of interest declared.

## Acknowledgements

Thanks to Marie Birne, Areti Tsiola, Jaymie Estevez and Arelys Uribe. This work was supported in part by CUNY Research Foundation and Howard Hughes Medical Institute Grant Summer Program for Undergraduate Students (SPUR) and NIH RO3 41702-00-01. Research was also



supported by Queens College and some of the experiments were done on equipment from the Core Facility for Imaging, Cellular and Molecular Biology at Queens College.

## References

1. Ahmad, N., Long, S., & Rebagliati, M. A southpaw joins the roster: the role of the zebrafish nodal-related gene southpaw in cardiac LR asymmetry. *Trends Cardiovasc Med.* **14**, 43-49 (2004).
2. Armstrong, E.J. & Bischoff, J. Heart valve development: endothelial cell signaling and differentiation. *Circ Res.* **95**, 459-470 (2004).
3. Bakkers, J., Verhoeven, M.C., & Abdellah-Seyfried, S. Shaping the zebrafish heart: from left-right axis specification to epithelial tissue morphogenesis. *Dev Biol.* **330**, 213-220 (2009).
4. Glickman, N.S. & Yelon, D. Cardiac development in zebrafish: coordination of form and function. *Semin Cell Dev Biol.* **13**, 507-513 (2002).
5. Heicklen-Klein, A., McReynolds, L.J., & Evans, T. Using the zebrafish model to study GATA transcription factors. *Semin Cell Dev Biol.* **16**, 95-106 (2005).
6. Schoenebeck, J.J. & Yelon, D. Illuminating cardiac development: Advances in imaging add new dimensions to the utility of zebrafish genetics. *Semin Cell Dev Biol.* **18**, 27-35 (2007).
7. Beis, D. *et al.* Genetic and cellular analyses of zebrafish atrioventricular cushion and valve development. *Development.* **132**, 4193-4204 (2005).
8. Jopling, C. *et al.* Zebrafish heart regeneration occurs by cardiomyocyte dedifferentiation and proliferation. *Nature.* **464**, 606-609.
9. Lepilina, A. *et al.* A dynamic epicardial injury response supports progenitor cell activity during zebrafish heart regeneration. *Cell.* **127**, 607-619 (2006).
10. Wills, A.A., Holdway, J.E., Major, R.J., & Poss, K.D. Regulated addition of new myocardial and epicardial cells fosters homeostatic cardiac growth and maintenance in adult zebrafish. *Development.* **135**, 183-192 (2008).
11. Parichy, D.M., Elizondo, M.R., Mills, M.G., Gordon, T.N. & Engeszer, R.E. Normal table of postembryonic zebrafish development: staging by externally visible anatomy of the living fish. *Dev Dyn.* **238**, 2975-3015 (2009).
12. Huang, C.J., Tu, C.T., Hsiao, C.D., Hsieh, F.J., & Tsai, H.J. Germ-line transmission of a myocardium-specific GFP transgene reveals critical regulatory elements in the cardiac myosin light chain 2 promoter of zebrafish. *Dev Dyn.* **228**, 30-40 (2003).
13. Westerfield, M. *The Zebrafish Book, A guide for the laboratory use of zebrafish (Danio rerio)*. University of Oregon Press, (1995).