

Journal of Visualized Experiments

Standardized Protocol and Guidelines for Point-of-Care Lung Ultrasound in Diagnosing Neonatal Pulmonary Diseases:International Expert Consensus --Manuscript Draft--

Article Type:	Methods Article - JoVE Produced Video
Manuscript Number:	JoVE58990R3
Full Title:	Standardized Protocol and Guidelines for Point-of-Care Lung Ultrasound in Diagnosing Neonatal Pulmonary Diseases:International Expert Consensus
Keywords:	lung ultrasound (IUS) Point-of-care lung ultrasound (POC-LUS) Lung diseases Infant, Newborn Neonatal Intensive Care Unit (NICU) emergency Critically ill
Corresponding Author:	Jing Liu, PhD.,M.D. Beijing Chaoyang Hospital Beijing, Beijing CHINA
Corresponding Author's Institution:	Beijing Chaoyang Hospital
Corresponding Author E-Mail:	liujingbj@live.cn
Order of Authors:	Jing Liu, PhD.,M.D.
	Erich Sorantin
	Jovan Lovrenski
	Javier Rodriguez-Fanjul
	Dalibor Kurepa
	Xing Feng
	Xin-Ru Qiu
	Xiao-Ling Ren
	Cai-Bao Hu
	Xiao-Man Wang
	Jiu-Ye Guo
	Yue-Qiao Gao
	Jian-Jun Li
	Li-Qun Jia
	Hua-Wei Wang
	Ying Liu
	Wei Fu
	Hai-Ying Cao
	Huayan Zhang
	Misun Hwang
	Tsu F. Yeh
	Yisrael Lipener
	Roberto Copetti

	Luigi Cattaross
	Abhay Lodha
	Jia-Qin Wang
	Li-Li Shang
	Zu-Lin Lu
	Yan Wang
	Guo-Rong Lyu
Additional Information:	
Question	Response
Please indicate whether this article will be Standard Access or Open Access.	Open Access (US\$4,200)
Please indicate the city, state/province, and country where this article will be filmed . Please do not use abbreviations.	China,Beijing

TITLE:

Using Point-of-Care Lung Ultrasound (POC-LUS) in Diagnosing Neonatal Pulmonary Diseases

AUTHORS:

Jing Liu¹, Roberto Copetti², Erich Sorantin³, Jovan Lovrenski⁴, Javier Rodriguez-Fanjul⁵, Dalibor Kurepa⁶, Xing Feng⁷, Luigi Cattarossi⁸, Huayan Zhang⁹, Misun Hwang¹⁰, Tsu F. Yeh¹¹, Yisrael Lipener⁶, Abhay Lodha¹², Jia-Qin Wang¹³, Hai-Ying Cao¹⁴, Cai-Bao Hu¹⁵, Guo-Rong Lyu¹⁶, Xin-Ru Qiu¹, Li-Qun Jia¹⁷, Xiao-Man Wang¹⁷, Xiao-Ling Ren¹, Jiu-Ye Guo¹, Yue-Qiao Gao¹, Jian-Jun Li¹, Ying Liu¹, Wei Fu¹, Yan Wang¹⁸, Zu-Lin Lu¹, Hua-Wei Wang⁷, Li-Li Shang¹⁹

¹Department of Neonatology and NICU, Beijing Chaoyang District Maternal and Child Healthcare Hospital and the Neonatal Lung Ultrasound Training Base, Chinese College of Critical Ultrasound, Beijing, China.

²Emergency Department, University Hospital of Cattinara, Trieste, Italy

³Division of Pediatric Radiology, Department of Radiology, Medical University Graz, Graz, Austria

⁴Faculty of Medicine, University of Novi Sad, Radiology Department, Institute for Children and Adolescents Health Care of Vojvodina, Novi Sad, Serbia

⁵Division of Neonatology, Hospital San Juan de Deú, Barcelona, Spain

⁶Division of Neonatal-Perinatal Medicine, Cohen Children's Medical Center, New Hyde Park, NY, USA

⁷Department of Neonatology, Children's Hospital of Soochow University, Suzhou, China

⁸Department of Neonatology, Udine University Hospital, Udine, Italy

⁹Radiology Department, Children's Hospital of Philadelphia, Philadelphia, PA, USA

¹⁰Center for Newborn Care, Guangzhou Women and Children's Medical Center, Guangzhou, China and Division of Neonatology, Children's Hospital of Philadelphia, Philadelphia, PA, USA

¹¹Division of Neonatology and NICU, Cook County Children's Hospital, University of Illinois, Chicago, USA and Division of Neonatology, Department of Pediatrics, Taipei Medical University, Taipei, Taiwan.

¹²Department of Pediatrics and Community Health Sciences, University of Calgary and Alberta Health Services, Calgary, AB, Canada.

¹³Department of Pediatrics, the Third Affiliated Hospital of Xinxiang Medical University, Xinxiang, China

¹⁴Department of Ultrasound, GE Healthcare and the Neonatal Lung Ultrasound Training Base, Chinese College of Critical Ultrasound, Beijing, China

¹⁵Intensive Care Unit, Zhejiang Hospital, Hangzhou, China and the Neonatal Lung Ultrasound Training Base, Chinese College of Critical Ultrasound, Beijing, China

¹⁶Collaborative Innovation Center for Maternal and Infant Health Service Application Technology, Quanzhou Medical College, Quanzhou, China

¹⁷Department of Ultrasound, Beijing Children's Hospital Affiliated with Capital Medical University, Beijing, China

¹⁸Department of Neonatology and NICU, Tai'an City Central Hospital of Shandong Province, Tai'an City, China

¹⁹Department of Intensive Care Unit, the Second Affiliated Hospital of Heilongjiang University of Chinese Medicine, Harbin, China

Corresponding Author:

Jing Liu
liujingbj@live.cn

Email Addresses of Co-authors:

Jing Liu (liujingbj@live.cn)
Roberto Copetti (robcopet@gmail.com)
Erich Sorantin (erich.sorantin@medunigraz.at)
Jovan Lovrenski (JOVAN.LOVRENSKI@mf.uns.ac.rs)
Javier Rodriguez-Fanjul (jrodriguez@sjdhospitalbarcelona.org)
Dalibor Kurepa (Dkurepa@northwell.edu)
Xing Feng (xing_feng66@hotmail.com)
Luigi Cattarossi (lcattarossi@hotmail.com)
Huayan Zhang (zhangh@email.chop.edu)
Misun Hwang (hwangm@email.chop.edu)
Yisrael Lipener (ylipener@northwell.edu)
Tsu F.Yeh (tfyeh@mail.ncku.edu.tw)
Abhay Lodha (aklodha@ucalgary.ca)
Qin-Jia Wang (wangjiaqin2005@sina.com)
Hai-Ying Cao (hai_ying.cao@china.med.ge.com)
Cai-Bao Hu (zjicu1996@163.com)
Guo-Rong Lyu (lgr_feus@sina.com)
Xin-Ru Qiu (qiuruxin1234@163.com)
Xiao-Ling Ren (renxiaoling@sina.com)
Xiao-Man Wang (wangxiaomanbj@163.com)
Jiu-Ye Guo (jiuyeguobj@sina.com)
Yue-Qiao Gao (gengsscufy@163.com)
Jian-Jun Li (lijianjunbj@163.com)
Li-Qun Jia (jjaliquunbjch@yeah.net)
Ying Liu (liuyingbj@sina.com)
Wei Fu (fuweifybj@sina.com)
Yan Wang (vicky2000love@163.com)
Zu-Lin Lu (luzulin0216@yeah.net)
Hua-Wei Wang (wanghwah@163.com)
Li-Li Shang (mzyyicu@163.com)

KEYWORDS:

Lung ultrasound (LUS), Point-of-care lung ultrasound (POC-LUS), Lung diseases, Infant, Newborn, Neonatal ward, Neonatal intensive care unit (NICU), Emergency, Critically ill

SUMMARY:

Lung ultrasound is a noninvasive and valuable tool for bedside evaluation of neonatal lung diseases. However, a relative lack of reference standards, protocols and guidelines may limit its

application. Here, we aim to develop a standardized neonatal lung ultrasound diagnostic protocol to be used in clinical decision-making.

ABSTRACT:

Ultrasound is a safe bedside imaging tool that obviates the use of ionizing radiation diagnostic procedures. Due to its convenience, the lung ultrasound has received increasing attention from neonatal physicians. Nevertheless, clear reference standards and guideline limits are needed for accurate application of this diagnostic modality. This document aims to summarize expert opinions and to provide precise guidance to help facilitate the use of the lung ultrasound in the diagnosis of neonatal lung diseases.

INTRODUCTION:

The chest x-ray (CXR) and/or chest computerized tomography (chest CT) are the main imaging tools in the diagnosis of lung diseases. For a long time, the lung ultrasound (LUS) was considered a "forbidden zone" in the diagnosis of lung diseases since ultrasonic waves are totally reflected when encountering air. However, by utilizing ultrasonic artifacts formed by different pathological changes in adults, children and newborn infants¹⁻⁵, this "forbidden zone" has been contested and point-of-care lung ultrasound (POC-LUS) has been successfully used for the diagnosis of lung diseases. Some authors have recommended POC-LUS as a preferred imaging modality in evaluation of lung diseases due to its greater accuracy, reliability, ease of performance and lack of potential adverse effects (i.e., radiation)⁵⁻⁷. In some neonatal intensive care units (NICUs), POC-LUS has replaced CXR and become the first-line approach used for the diagnosis and differential diagnosis of various neonatal lung diseases⁵⁻⁹.

Nonetheless, the use of POC-LUS remains limited due to the lack of operating protocols, diagnostic standards and guidelines. To promote proper utilization of POC-LUS in the neonatal field, the Division of Perinatology of the Society of Chinese Pediatrics and the Division of Neonatal Ultrasound Society of the Chinese Neonatologist Association in combination with the Chinese College of Critical Ultrasound have organized an international expert panel to review the latest publications on neonatal LUS. The panel summarized these expert-opinions and developed the present LUS protocols and guidelines for its use. The main objective is to popularize the application of POC-LUS in NICUs is reducing the number of CXR and thus avoiding the potential radiation-induced harmful effects. As a real-time imaging technique, LUS is user-friendly, easy to learn, and easy to replicate with appropriate training.

Patients and timing of the LUS examination

Indications for the initial POC-LUS exam include: (i) a neonate admitted for respiratory distress (ii) prenatal suspicion of lung lesions, and (iii) a neonate with a sudden deterioration of respiratory status.

Indications for a follow-up POC-LUS exam include: (i) helping to guide respiratory support (In experienced hands, ultrasonography-assisted weaning of mechanical ventilation may significantly shorten the duration of mechanical ventilation and reduce extubation failure.); (ii) helping to guide changes in the level of respiratory support after surfactant delivery as well as to

determine the need for a repeat surfactant treatment; (iii) monitoring the progress of respiratory illness when needed; (iv) following up on the changes in the lung volume or the degree of atelectasis in the post-bronchoalveolar lavage period (i.e., for infants with meconium aspiration syndrome, severe pneumonia, or atelectasis) as well as to improve visualization of the therapeutic effects of thoracentesis (i.e. pleural effusion or pneumothorax)^{10,11}.

Lung Ultrasonography Terminology

Pleural line and lung sliding^{12,13}: A pleural line is a hyperechoic reflection formed by the difference in acoustic impedance between the pleural-lung surface interface. It appears as a smooth, regular and relatively straight hyperechoic line (**Supplemental Figure 1**). Blurring, irregularities, interruption of continuity or absence of the pleural line indicates abnormalities. In a real-time ultrasound, the pleural line moves in a to- and fro- pattern, synchronized with respiratory movement. This kind of movement is called lung sliding (**Video 1**). The absence of lung sliding is always pathologic.

A-line^{12,13}: An A-line is a type of reverberation artifact caused by multiple reflections of the pleura when the probe is perpendicular to the ribs for scanning. A-lines are situated below the pleural line and present as a series of smooth, clear, regular and equidistant hyperechoic parallel lines. The echoes of the A-lines gradually diminish as they move deeper into the lung field where they ultimately disappear (**Supplemental Figure 2**).

B-line, confluent B-line and alveolar-interstitial syndrome¹³⁻¹⁵: Based on current literature and our clinical experiences in the field of neonatal lung diseases, we have defined these terms as follows: A single B-line is a type of linear hyperechoic reflection of an artifact caused by an ultrasound wave encountering the alveolar gas-liquid interface. B-lines arise from and are roughly vertical to the pleural line. They spread downwards to the edge of the screen without fading and move in synchrony with lung sliding. A confluent B-line is defined as the entire intercostal space filled with B-lines (B-line fusion, reflecting B-lines that are difficult to distinguish and count) between two acoustic shadows of the ribs. Alveolar-interstitial syndrome (AIS) is defined as two or more sequential intercostal spaces with confluent B-lines in any scanning area (**Supplemental Figure 3**).

Compact B-lines and white lung^{15,16}: When the probe is used to scan perpendicular to the ribs, the presence of concentrated B-lines may cause the acoustic shadow of the ribs to disappear within the entire scanning zone. This type of B-line is called a compact B-line. A white lung is present when each scanning zone on both sides of the lung presents as compact B-lines. Compact B-lines and a white lung are manifestations of severe pulmonary edema (**Supplemental Figure 4**).

Lung consolidation and shred sign^{17,18}: On LUS, lung fields may have a tissue-like density (lung tissue 'hepatization'), which usually represents lung consolidation. Lung consolidation may be accompanied by air bronchograms, fluid bronchograms, or even dynamic air bronchograms in the most severe cases (**Video 2**). When the boundary between the consolidated lung tissue and

the aerated lung tissue is unclear, the hyperechoic ultrasonic signs formed between the two areas are called shred signs (**Supplemental Figure 5**).

Lung pulse¹⁹: If lung consolidation is sufficiently large and near the edges of the heart, the consolidated lung may appear to be pulsating synchronized with the heartbeat when observed with real-time ultrasound. This sign is called the lung pulse (**Video 3**).

Lung point^{13,18,20}: Under real-time ultrasound, the appearance of an alternate area where lung sliding is present and then absent is called a lung point. The lung point is a specific sign of a pneumothorax and can accurately locate the position of the gas boundary when a mild-moderate pneumothorax is present (**Supplemental Figure 6**).

Double lung point²¹: Due to the differences in the severities and/or the natures of the lesions in different area of the lungs, a clear difference between the upper and lower lung fields could be found with perpendicular scans, which forms a sharp cut-off point between the upper and lower lung field known as a double point (**Supplemental Figure 7**).

Sandy beach sign and stratosphere sign²⁰⁻²²: Under M-mode ultrasonography, a series of wavy-line echo above the pleural line and the uniform granular dot echo (generated by the lung sliding) below the pleural line can together form a beach-like sign known as a sandy beach sign or seashore sign. When lung sliding disappears, the granular dot echoes are replaced by a series of horizontal parallel lines. This kind of ultrasonic sign is known as a stratosphere sign or barcode sign (**Supplemental Figure 8**).

PROTOCOL:

This work was approved by the research ethics committee of Beijing Chaoyang District Committee of Science & Technology and the ethics committee of Beijing Chaoyang District Maternal and child Healthcare Hospital, and that the protocol follows the guidelines of the hospital's human research ethics committee.

1. Ultrasound exam preparation

1.1. Probe selection

1.1.1. Select a high-frequency linear probe (≥ 9.0 MHz) for POC-LUS to ensure high resolution.

NOTE: A higher frequency linear probe is used to assure higher resolution. For infants with a lower gestational age or lower birth weight, a higher frequency probe is required. When the penetration is not enough, decrease the frequency or change to a lower frequency liner probe. If no suitable linear probe is available, consider using a high-frequency (≥ 8.0 MHz) convex array probe.

1.2. Probe disinfection

1.2.1. Disinfect the probe before and after patient examination to avoid nosocomial infection and cross-contamination.

NOTE: The easiest, most convenient and effective disinfecting method is the use of special disinfection wipes. Alternatively, powderless gloves or probe covers can also be considered.

1.3. Preset selection

1.3.1. Choose a LUS preset.

1.3.2. Optimize the image for lung scanning if there is no LUS preset.

1.3.2.1. Select one of **Small Parts** presets.

1.3.2.2. Modify the parameters to perform lung scanning. Adjust the **Depth** button to make it 4-5 cm.

1.3.2.3. Press the **Focus Zone** button to have 1-2 focuses and adjust it to change the focus position near the level of pleural line. Turn on the **SRI** (Speckle Reduction Imaging) button and select level 2-3 to reduce the speckle noise.

1.3.2.4. Turn on the **CRI** button (Crossbeam) and select level 2 to improve contrast resolution. Activate the **Harmonics** to improve the signal-noise ratio or use the fundamental frequency for sharper A-lines or B-lines.

1.4. Ultrasound gel application

1.4.1. Warm up the gel.

1.4.2. Apply a layer of gel on the transducer. Make sure to avoid air bubbles between the transducer and the skin surface.

2. Infant positioning

2.1. Keep the infant in a quiet state.

2.2. Swaddle the infant exposing only the area to be examined.

2.3. Place the infant in the supine, prone or side position before and during the process of examination.

NOTE: In general, we do not recommend using sedatives while pacifier use is encouraged. Supine positioning is convenient for scanning of the anterior and lateral chest. Prone or side positioning

is convenient for scanning of the back and lateral chest.

3. Lung partitioning

3.1. Six-region method

3.1.1. Divide each lung into three regions: anterior, lateral and posterior lung area. To do this, use the anterior axillary line and the posterior axillary line as boundaries. Divide both lungs into a total of six regions.

3.2. Twelve-region method

3.2.1. By using the line that connects the nipples, divide each lung into upper and lower lung fields, resulting in a total of 12 regions on both sides of the lungs.

NOTE: Carefully scan the entire lung fields. Each of the 6 or 12 areas should be scanned separately to ensure comprehensive coverage and to minimize the possibility of missing existing lung lesions.

4. Scan mode selection

4.1. B-mode ultrasound

4.1.1. Press the **2D** button on the user interface to start B-mode scanning.

NOTE: B-mode scanning is the most important and the most commonly used mode in obtaining LUS images. The majority of lung diseases can be found with B-mode scanning.

4.2. M-mode ultrasound

4.2.1. Press the **M** button on the user interface to start M mode scanning if needed.

NOTE: M-mode ultrasound is helpful for further confirmation of the possibility of pneumothorax.

4.3. Color or power Doppler ultrasound

4.3.1. Press the **C** button or **PD** button on the user interface to start the color or power Doppler examination if needed.

NOTE: Doppler ultrasound is used occasionally to assess the blood flow in the large area of lung consolidations or to distinguish the bronchi from blood vessels.

5. Scanning methods

5.1. Perpendicular scanning

5.1.1. Place the transducer perpendicular to the ribs and slide it from the midline to the lateral side along the wide axis to perform the perpendicular scanning.

5.1.2. After initial area of the lung is scanned, move the transducer from up to down and scan the remaining areas until all the lung fields are examined.

NOTE: Perpendicular scanning is the most important scanning method. Keeping the transducer perpendicular to the ribs is the key to obtaining accurate and reliable results.

5.2. Parallel scanning

5.2.1. Rotate the transducer 90° after finishing the perpendicular scanning. Keep the transducer parallel to the ribs and slide it along the narrow axis to realize the parallel scanning.

5.2.2. After the initial area of the lung is scanned, move the transducer from up to down to scan the remaining areas until all the lung fields are examined.

5.3. Transdiaphragmatic scanning

5.3.1. Place the transducer below the xiphoid and angle the transducer from side to side to scan the diaphragm and the bottom of lungs via the liver as the acoustic window.

NOTE: Increase the depth and turn on virtual convex scanning to expand the far field area if needed.

REPRESENTATIVE RESULTS:

The main purpose of this protocol and guideline is to instruct users on how to use LUS to diagnose and differentiate common neonatal lung diseases. These include respiratory distress syndrome (RDS), transient tachypnea of the newborn (TTN), pneumonia, meconium aspiration syndrome (MAS), pulmonary hemorrhage, pulmonary atelectasis and pneumothorax, etc. Thus, the normal neonatal LUS characteristics and the LUS diagnostic criteria for different lung diseases are described in detail.

Normal Neonatal Lung Ultrasound

The neonatal normal lung field appears hypoechoic on a B-mode ultrasound. Pleural lines and A-lines are smooth, regular and straight. As mentioned previously, A-lines are hyperechoic, arranged in parallel and equidistant from one each other. A-line echoes gradually diminish until they disappear from the shallow to the deep part of the lung fields. There may not be any B-lines (three to seven days after birth) or just a few B-lines (within three to seven days after birth) in the lung fields. However, there is no AIS, pleural effusion, or lung consolidation. Lung sliding is detectable by real-time ultrasound, whereas in M-mode imaging, a linear pattern appears in

tissues superficial to the pleural line, and a grainy or sandy pattern appears below the pleural line, creating the seashore sign (**Figure 1**)^{23, 24}.

LUS Characteristics and Diagnostic Criteria for Lung Diseases of the Newborn Infants

Respiratory distress syndrome (RDS) of the newborn

RDS refers to a lung disease where main clinical manifestations are tachypnea, retractions, grunting and cyanosis. It presents immediately after birth. RDS is caused by a primary or secondary deficiency of pulmonary surfactant in preterm and term neonates respectively. Lack of surfactant causes development of pulmonary atelectasis and low lung volumes²⁵⁻²⁷. Currently the diagnosis of RDS is based on history, clinical manifestations and CXR findings. However, RDS can also be diagnosed easily and accurately by LUS. A meta-analysis that included 673 newborn infants with RDS showed that the sensitivity and specificity of LUS in diagnosing RDS was 99% and 96%, respectively²⁸.

LUS diagnosis of RDS is based on the following findings^{16,28-34}. (i) Lung consolidations accompanied by air-bronchograms are the most important LUS manifestation of RDS, which is characterized by the following: (a) Consolidations are most often observed in the posterior parts of the lungs. The degree of consolidation is related to the severity of the disease. (b) Consolidations are limited only to the region beneath the pleura in mild RDS patients. Conversely, the areas of consolidation may extend to deeper parts of the lung fields in more severe RDS. (c) Usually, consolidations are visible in different lung fields bilaterally. Nevertheless, they may be limited to certain intercostal spaces on one side of the lung. Consolidated areas show an uneven hypoechoic quality and the boundary with surrounding lung tissue is clear and easy to distinguish. (d) Air-bronchograms show dense, speckled or snowflake-like shapes. (ii) The pleural line is abnormal, and the A-lines disappear. (iii) The non-consolidated zones may appear as AIS. (iv) 15% to 20% of patients may have different degrees of unilateral or bilateral pleural effusion.

In addition, changes in pulmonary status can be efficiently followed-up by LUS. Improvements in LUS findings are often first observed in anterior lung areas because these areas are non-dependent and better ventilated. Transition from consolidation to aggregation-induced emission (AIE), AIE to interstitial edema (IE), and IE to a normal LUS pattern or vice-versa can be seen. This LUS quality allows for estimation of the surfactant replacement therapy effect (**Figure 2**).

Transient tachypnea of the newborn (TTN)

TTN is also known as 'wet lung' of the newborn. It is one of the most common respiratory diseases in newborn infants. TTN is self-limited with most patients recovering within 24-72 hours without any special intervention. Rarely, it can lead to severe respiratory distress, hypoxemia, pneumothorax or even death^{35,36}. TTN is often underdiagnosed, especially among premature infants. It has been reported that 62% to 77% of infants who were clinically diagnosed with RDS actually had TTN according to the traditional diagnostic criteria^{36,37}. LUS can eliminate such misdiagnoses since TTN can be easily differentiated from RDS and other lung diseases by LUS.

The main characteristic of TTN is lung edema without lung consolidations, and it is diagnosed based on the following findings^{21,30,31,38,39}. (i) Mild TTN mainly manifests as AIS and a double lung point. Severe TTN in the acute period mainly manifests as a compact B-line, white lung, or severe AIS, while a double lung point may appear with disease recovery. (ii) Mild or severe TTN is characterized by pleural line abnormalities, A-line disappearance, and different degrees of pleural effusion in one or the bilateral side of chest. (iii) No consolidation is observed in the lung fields (**Figure 3**).

Pneumonia of the newborn

Pneumonia refers to inflammation of the lung parenchyma, including the terminal airway, alveolar space and pulmonary interstitial areas. It is caused by infectious microorganisms or physical or chemical factors. Pathologically, alveolar inflammatory exudates, hyperemia and edema are present. When bronchiolar epithelium cell necrosis occurs, mucous and cellular debris in the lumen can cause regional air trapping and atelectasis. Pneumonia is responsible for more than 1/3 of all newborn hospitalizations and infectious pneumonia accounts for more than 1/4 of all neonatal deaths especially in the developing world^{40,41}. A meta-analysis showed a sensitivity higher than 96% and specificity higher than 93% when LUS is used to diagnose pneumonia both in adults and children^{42,43}.

LUS imaging characteristics of pneumonia include the following⁴³⁻⁴⁸. (i) Lung consolidations accompanied by air-bronchograms or fluid-bronchograms; Lung consolidations are the main ultrasound-imaging feature of pneumonia, which are characterized by the following: (a) The size of the consolidation in severe pneumonia is usually large with irregular or jagged boundaries. The shred sign is visible at the edges of the consolidated areas and the dynamic-bronchograms are often visible in severe patients. (b) Consolidations may be located at one or more positions in the lung fields, and consolidated areas may differ in size and shape in the different lung fields. (ii) The pleural line is abnormal and A-lines disappear. (iii) B-lines or AIS are visible in the nonconsolidated areas. (iv) Different degrees of unilateral or bilateral pleural effusion are visible in some infants. (v) The main manifestations of mild or early pneumonia may be presented as small subpleural focal consolidations and AIS (**Figure 4**).

Meconium aspiration syndrome (MAS) of the newborn

MAS is due to fetal hypoxia leading to defecation and inhalation of meconium-stained amniotic fluid by the infant before or during the delivery process. Meconium particles cause mechanical obstruction of the terminal bronchioles and alveoli together with chemical inflammation and secondary surfactant deficiency. These changes further lead to air-trapping, atelectasis and alveolar or interstitial pulmonary edema. Infants with severe MAS often present with signs of severe respiratory distress including cyanosis, tachypnea, nasal flaring, and retractions and grunting within hours of birth. MAS is a serious lung disease accounting for approximately 10% of all cases of neonatal respiratory failure. Among these patients 10% to 20% will experience pneumothorax and the reported mortality can be as high as 39% in developing and newly industrialized countries^{49,50}.

The bases for the LUS diagnosis of MAS are as follows⁵¹⁻⁵³: (i) Lung consolidations accompanied by air-bronchograms are the most important sonogram characteristic of MAS. The scope of consolidation is related to the degree of the disease. The edges of the consolidation area are irregular or jagged and the shred sign is visible. The degrees of consolidation may differ between the two sides of the lung. Similarly, different sizes of consolidation may be present on the same side of the lung. (ii) The pleural line is abnormal, and the A-line disappears. (iii) The B-lines or AIS are visible in the nonconsolidated zone. (iv) Some patients may have different degrees of unilateral or bilateral pleural effusion. It is difficult to differentiate MAS and pneumonia solely based on ultrasound manifestations. Therefore, to obtain a definitive diagnosis it is often necessary to combine ultrasound findings with perinatal history, physical exam and laboratory findings (**Figure 5**).

Pulmonary hemorrhage of the newborn (PHN)

PHN is not an independent lung disease. In general, it is a late complication of other diseases, its onset is sudden and the infant deteriorates rapidly causing PHN to have a high mortality rate. Pathologically, PHN can present as a focal, regional, or diffuse hemorrhage, usually with alveolar structural damage. The interstitial area of the lung can also be affected. PHN often occurs within the first several days after birth with nearly 90% of PHN occurring within the first week of life^{54,55}.

The main LUS characteristics in PHN are as follows^{56,57}: (i) The shred sign is the most common and the most important LUS sign of *PHN*. (ii) The degree of lung consolidations accompanied by air-bronchograms are closely related to the severity of the primary diseases. (iii) More than 80% of the patients have different degrees of unilateral or bilateral pleural effusion. Thoracentesis usually confirms the effusion is bleeding. In severe cases, fibrous, cordlike, floating objects formed by fibrin degeneration are visible within the effusion. These objects can be seen floating in the effusion along with respiratory movement by real-time ultrasound. (iv) Miscellaneous signs include pleural line abnormalities, A-line disappearance and AIS (**Figure 6**).

Pulmonary atelectasis of the newborn

Inadequate aeration resulting from collapse of previously expanded pulmonary tissue is defined as atelectasis^{49,50}. Atelectasis can be divided into obstructive and compressive atelectasis based on the pathophysiology. It can also be divided into complete atelectasis and incomplete atelectasis according to the degree of atelectasis. It is not also an independent disease but rather a common complication of multiple diseases. Atelectasis is a common cause of neonatal respiratory distress and often contributes to prolonged illness or difficulty weaning from ventilator support. Correct diagnosis and appropriate treatment lead to improved outcomes^{58,59}. LUS has a great diagnostic value in cases of pulmonary atelectasis.

Characteristic LUS findings include⁶⁰⁻⁶²: (i) Lung consolidation accompanied by air bronchograms, or even dynamic bronchograms or parallel air bronchograms are visible in severe cases. (ii) The edges of the consolidation area are relatively clear and regular in severe large-area pulmonary atelectasis. If the atelectasis is limited to a small region, the edges of the consolidation area may not be obvious. (iii) The pleural line in the consolidation area is abnormal and A-lines disappear. (iv) In the early stages of severe or large-area atelectasis, the lung pulse may be visible while lung

sliding often disappears under real-time ultrasound. (v) The pulmonary blood flow may be visible in the consolidated areas by color or power Doppler ultrasound. If atelectasis persists (the final stages of atelectasis), both the dynamic bronchograms and the blood flow will disappear (**Figure 7, Figure 8, Supplemental Video 1, Supplemental Video 2**).

Pneumothorax of the newborn

Abnormal accumulation of air in the pleural space is defined as a pneumothorax. It is a relatively common but critical neonatal illness associated with high morbidity and mortality especially in preterm infants^{63,64}. Ultrasound diagnosis of a pneumothorax is very sensitive and specific. Both meta-analysis and prospective controlled studies have shown that LUS is more accurate than CXR for the detection of pneumothorax^{66,67}.

Pneumothorax is diagnosed based on the following LUS signs^{20,65-68}: (i) Disappearance of lung sliding is the most important sign in the ultrasound diagnosis of pneumothorax. If lung sliding is present, pneumothorax can essentially be excluded. (ii) There are no B-line or comet tail signs, if present pneumothorax can also be excluded. (iii) The clear presence of the lung point is a specific sign for ultrasound diagnosis of mild-to-moderate pneumothorax. However, there is no lung point in severe pneumothorax. The specificity of the lung point in diagnosing pneumothorax is 100% while the sensitivity of approximately 70% or higher²¹. (iv) The pleural line and A-lines are present. Pneumothorax can be excluded if these lines disappear. (v) On M-mode imaging the sandy beach signs are replaced by the stratosphere signs (**Figure 9, Figure 10, Video 5, Video 6**).

For beginners, the following steps may be taken if there are clinical doubts. (i) First, observe the pleural line and the A-line: if they are absent, pneumothorax can be excluded. (ii) If the pleural line and A-lines are present (that is normal lung appearance under B-mode ultrasound), observe lung sliding under real-time ultrasound. If it is present, pneumothorax can be excluded. (iii) If lung sliding disappears, observe the B-line or comet tail sign. If either is present, pneumothorax can be excluded. (iv) If lung sliding disappears and there is no B-line, observe the lung point. If it is present, then mild-to-moderate pneumothorax is essentially confirmed. If it is absent, then severe pneumothorax may have occurred. (v) On M-mode imaging, if the beach sign is replaced by a stratosphere sign, the existence of pneumothorax is further confirmed. The pneumothorax diagnostic procedure is shown in the **Figure 11**.

[Place Fig 11 here]

Pulmonary edema in cardiac insufficiency

Causes of pulmonary edema in newborns are similar to the ones in the adult population. In addition to the newborns with congenital heart diseases or cardiac insufficiency, many preterm infants with bronchopulmonary dysplasia (BPD) may show signs that are consistent with pulmonary edema^{69,70}. Occasionally, LUS shows an increase in bilateral B-lines or interstitial fluid even before CXR. This pattern may improve upon cardiac treatment or surgery.

Examining correct ETT placement and position

In pediatric and neonatal populations, studies have shown that POC-US is a feasible tool that has been used clinically to verify both correct endotracheal tube (ETT) placement and an acceptable ETT tip position⁷¹⁻⁷⁵. Proper ETT placement includes both tracheal intubation and an acceptable ETT tip position. Visualization of the ETT tip at a distance ranging from 0.5 to 1.0 cm from the upper border of the aortic arch suggests that the ETT is not too deep. This method has been validated in several studies⁷³. A recent study confirmed these findings and found that ultrasound provided images more rapidly than CXR (mean 19.3 vs. 47 minutes, respectively)⁷². The concordance of POC-US with CXR to recognize deep and shallow ETT tips was 95%. The sensitivity of LUS to detect deeply positioned ETT tips on X-ray was 86% (specificity of 96%)⁷³. Other studies have evaluated the distance from the ETT tip to the superior aspect of the main pulmonary artery that anatomically corresponds to the level of the carina and found a good correlation between this technique and radiography^{75,76}.

FIGURE LEGENDS:

Figure 1: Neonatal normal LUS characteristics.

On B-mode imaging, the pleural line and A-line show smooth, regular and hyperechoic lines arranged in parallel and equidistant from each other. The A-line echoes gradually diminish until they disappear. In M-mode, a seashore sign is present.

Figure 2: LUS image characteristics of RDS patients.

(A) CXR of a patient with grade II-III RDS (A-1). LUS shows lung consolidation with air bronchograms in bilateral lung fields, disappearance of the pleural line and A-lines (A-2: left lung, A-3: right lung).

(B) CXR of a patient with grade III RDS (B-1). LUS shows a large area of consolidation and a small effusion in the left lung (B-2), significant consolidation in the upper field and a large amount of pleural effusion in the lower field of the right lung (B-3).

Figure 3: LUS image characteristics of TTN patients.

(A) Double lung point. Clear, sharp cut-off point between the upper and lower lung fields. It is formed when there are differences in the degrees of pathological changes. This sign is often observed in mild TTN.

(B) LUS shows a disappearance of the pleural line and A-lines, as well as AIS in the lung fields.

(C) An area of fluid in the right lung indicating a pleural effusion.

(D) The dense B-line causes the acoustic shadows of the ribs to disappear from the entire scanned area. This type of B-line is called a compact B-line. White lung is defined as the existence of compact B-lines within each lung field. Both compact B-lines and white lung are common ultrasound signs of severe TTN.

Figure 4: LUS image characteristics of pneumonia patients.

(A) Vertical scanning: The image demonstrates large areas of lung consolidation with air bronchograms in the lung field. The consolidation area has irregular boundaries.

(B) Horizontal scanning: The image shows large areas of lung consolidation with significant air bronchograms in the lung field.

(C) Extended view: A severe pneumonia patient. Extended view shows a whole aspect of the consolidations involving the left lung.

Figure 5: LUS image characteristics of MAS patients.

(A) LUS shows large areas of pulmonary consolidation with irregular edges, especially in the right lung. This finding is consistent with the CXR.

(B) LUS shows a large lung consolidation with the air bronchograms, irregular edges, abnormal pleural line and the absence of A-lines. The CXR shows patchy opacities that highly suggest MAS.

Figure 6: LUS image characteristics of PHN.

(A) Ultrasound findings in a severe PHN patient. CXR shows bilateral hazy lung fields with low lung volumes and pleural effusions. Middle and right: LUS shows a large area of lung consolidation with an air bronchogram, shred sign at the edge of the consolidation and pleural effusions in both sides of the lungs. The pleural effusion confirmed to be hemorrhagic by thoracentesis. Pleural line and A-line are absent. Fibrous protein depositions are observed as cordlike floating objects on real-time ultrasound.

(B) Pleural effusion as the main ultrasound finding in PHN patients. LUS shows significant pleural effusion on both sides of the chest (more severe on the right). This finding is consistent with the CXR. The fluid was confirmed to be bloody by thoracentesis. The other findings are AIS and mild shred signs.

Figure 7: LUS image characteristics of pulmonary atelectasis of the newborn.

LUS shows a large consolidation area with regular edges in the right lung (A, B, C). The echogenicity of the consolidated lung tissue is similar to that of the adjacent liver tissue (B, C). Significant air bronchograms are observed (C).

Figure 8: Blood flow within atelectasis

(A) B-mode LUS shows a large area consolidation with a significant air-bronchograms as well as regular margins, presented as atelectasis.

(B) Color Doppler ultrasound shows significant arterial blood supply within consolidated area of the lung (Video 4).

Figure 9: Lung point in mild-moderate pneumothorax

(A) TTN patient with pneumothorax. The B-mode LUS shows an abnormal pleural line, AIS and disappearing A-lines in the left lung. Right lung shows a lung point. Lung sliding occurs in the B-line area but is absent in the A-line area on real-time ultrasound (Video 5).

(B) RDS patient with pneumothorax. B-mode LUS shows a large lung consolidation with air bronchograms in the left lung and a small consolidation in the right lung. The pleural line and A-lines are present on the right side of the right lung.

(C) Lung point under M-mode ultrasound. Left lung shows the beach sign. Right lung shows the lung point (the point between beach sign and stratosphere sign), confirming mild pneumothorax.

Figure 10: LUS in massive pneumothorax

(A) CXR shows severe pneumothorax in the left lung. Pleural line and A-lines are present on the left lung but no lung point is found. LUS shows AIS in the right lung. Lung sliding disappears in the whole left lung field while present on the right on real-time ultrasound (**Video 6**).

(B) Under M-mode ultrasound the right lung shows a beach sign while the left lung presents a stratosphere sign (also known as a barcode sign). This confirms a severe pneumothorax in the left hemithorax.

Figure 11: Flowchart for pneumothorax diagnostic procedure

Video 1: Lung sliding

The pleural line moves in synchrony with respirations.

Video 2: Dynamic air bronchograms

When severe lung consolidation is present air-bronchograms move with the respirations. This kind of air-bronchogram is also known as dynamic air-bronchogram.

Video 3: Lung pulse

If the area of lung consolidation is large enough, the consolidated lung pulsates in synchrony with heartbeats, this kind of pulsation is called the lung pulse.

Video 4: Blood supply in atelectasis area

The rich blood supplying can be found under Color Doppler ultrasound.

Video 5: Lung point in a mild-moderate pneumothorax patient

Lung sliding occurs in the B-line area but is absent in the A-line area on real-time ultrasound.

Videos 6: Disappeared lung sliding in a severe pneumothorax patient

Lung sliding disappeared in the entire right lung field. It is presented in the left lung.

Supplemental Figure 1: Pleural line

Under B-mode ultrasound, the pleural line appears as a smooth, regular hyperechoic lines.

Supplemental Figure 2: A-lines

A-lines are situated below the pleural line. They present as a series of smooth, linear hyperechoic parallel lines.

Supplemental Figure 3: B-line, confluent B-line, and AIS

(A) B-lines. B-lines arise from and are roughly vertical to the pleural line.

(B) Confluent B-lines. Confluent B-lines occur when the entire intercostal space is full of intense B-lines, but the acoustic shadow of the ribs is still clearly displayed.

(C) Alveolar-interstitial syndrome. AIS is defined by the presence of two or more sequential intercostal spaces with confluent B-lines in any scanning area.

Supplemental Figure 4: Compact B-lines.

Compact B-lines refer to the concentration of B-lines that causes acoustic shadow of the ribs to disappear within the scanning zone. White lung occurs when each scanning zone on both sides of the lung presents as compact B-lines.

Supplemental Figure 5: Lung consolidation and shred sign.

(A) Lung consolidation. On LUS lung tissues gives appearance of tissue-like density, also called 'hepatization' of the lung.

(B) Shred sign. When the boundary between consolidated lung tissue and aerated lung tissue is unclear the ultrasound sign formed between the two areas is called a shred sign.

Supplemental Figure 6: Lung point

The transition point from the B-line area to the parietal pleura and A-line existing area is the lung point.

Supplemental Figure 7: Double lung point.

Differences in the degree or pathologic changes between upper and lower lung fields indicate a double lung point.

Supplemental Figure 8 Sandy beach sign and stratosphere sign

Under M-mode ultrasound, the part A presents the sandy beach sign (generally excluded pneumothorax) while the part B shows the stratosphere sign (generally seen in pneumothorax).

Supplemental Video 1: Lung pulse in a patient with severe atelectasis

Severe atelectasis in the left lung. Movement of the atelectatic lung can be observed with the heart beat by real-time ultrasound; this movement is called the lung pulse.

Supplemental Video 2: Dynamic air bronchograms in a patient with severe atelectasis

Air bronchograms are observed with respiratory movement by real-time ultrasound. This kind of movement is known as a dynamic air bronchogram and is a common ultrasound sign in severe atelectasis patients.

DISCUSSION:

POC-LUS is a feasible and convenient diagnostic method that can be performed in the NICU at the bedside. It is very sensitive and reliable in the diagnosis of all types of neonatal lung diseases⁷⁷. Furthermore, it has many advantages over the CXR and CT scan such as accuracy, reliability, low cost, simplicity and no risk of adverse effects due to radiation. Therefore, we encourage the use of LUS in the NICU. When learning this imaging modality, the following issues need to be carefully considered: (1) Examiners require at least 6-8 weeks of training. They have to evaluate 20-30 patients with each type of lung disease to master the technique. The diagnostic sequence for pneumothorax is more challenging in neonates compared to older children or adults. We suggest that in this case trainees receive extra training time. (2) Examiners operate in strict accordance with the operating procedures of the ultrasound instrument. (3) Examiners should reduce adverse stimulation of neonate as much as possible. The ultrasound exam is to be performed at appropriate times, especially in high-risk infants. (4) The exam is to be ideally

performed with a quiet and calm neonate. No sedatives are needed to perform the examination. (5) Care must be taken to keep the neonate warm. Ultrasound gel must be preheated. (6) Sterilization and isolation procedures must be observed. The operators should wash their hands, carefully clean and sterilize the probe and use a protective plastic probe cover to avoid cross-contamination.

Perpendicular scanning is the most important and most commonly used scanning method. Since sub-pleural lung tissue is located at the distal end of the bronchial and blood supply, it is more likely to be affected by different lung diseases. Therefore, perpendicular scanning can delineate nearly the entire lung anatomy in neonates. Certainly, parallel scanning is also very helpful in detecting mild lung lesions (i.e., pathological changes involving only 1-2 intercostal spaces and limited to the subpleural areas) or in identifying the “lung point” when a mild-moderate pneumothorax is suspected¹⁰. When the lesions mainly involve the bottom of the bilateral lungs, scanning may also be performed below the diaphragm via the liver as an acoustic window. This type of scanning can also be used to examine the integrity of the diaphragm and the presence of pleural effusions.

In clinical practice, however, LUS examination should not be limited to a fixed scanning sequence. The scan can be performed from the most convenient place based on the infant’s position during the examination. Starting LUS scanning from the back is acceptable and easy to perform. It also avoids interference from the heart and the large vessels. Further scanning in other areas of the lungs must be performed in any infant with high suspicion of a pulmonary lesion in a situation where scanning of the back reveals no abnormalities.

Occasionally, we may use the extended view (XTD-View) function. The XTD-View function can construct an extended image from individual image frames as the operator slides the transducer along the narrow axis of the probe. XTD-View allows the doctors to assess the interesting areas and neighboring structures fully (**Figure 4C**). To do this, we should orient the transducer parallel to the direction of transducer motion before activating the XTD-View button. It is necessary to slide the transducer towards the notch and keep the transducer perpendicular to the ribs during the whole scanning.

LUS has some limitations. (1) It is highly operator dependent. Therefore, it is necessary to gain sufficient experience to fully understand the basic principles of LUS before performing examinations. (2) Subcutaneous emphysema affects the image quality as well as accuracy of the results, thus it may interfere with scanning. (3) The role of LUS in emphysema, pneumomediastinum and the diagnosis of bronchopulmonary dysplasia remains uncertain. (4) Some mild cases may be missed if the scanning is not performed carefully. (5) It was reported that LUS has a limited value as a diagnostic tool for rare cystic lung diseases, such as lymphangioleiomyomatosis, pulmonary Langerhans cell histiocytosis and Birt-Hogg-Dubé syndrome⁷⁸.

Current literature offers well-designed, systematic and in depth research in the area of LUS. Research findings have been validated and confirmed in clinical practice. Our protocol and

guidelines have been developed after a thorough evidence-based review of the currently available data by a panel of international experts in this field.

ACKNOWLEDGMENTS

We acknowledge all the experts and authors that participated in writing the manuscript. This work was supported by the Foundation of Beijing Chaoyang District Committee of Science and Technology (CYSF1820) and the Clinical Research Special Fund of Wu Jieping Medical Foundation (320. 6750. 15072).

We acknowledge the Division of Perinatology, the Society of Pediatrics of the Chinese Medical Association and the Division of Neonatal Ultrasound Society, the Chinese Neonatologist Association as well as the Chinese College of Critical Ultrasound for organizing this work.

We acknowledge the all the staff who worked for the Department of Neonatology and the NICU, Beijing Chaoyang District Maternal and Child Healthcare Hospital, especially the nursing group who gave great assistant to this work, particularly during the process of the video recording.

DISCLOSURES

The authors have nothing to disclose.

REFERENCES:

1. Chavez, M. A. et al. Lung ultrasound for the diagnosis of pneumonia in adults: a systematic review and meta-analysis. *Respiratory Research*. **15**, 50 (2014).
2. Yilmaz, H. L., Özkaya, A. K., Gökay, S. S., Kendir, Ö. T., Şenol, H. Point-of-care lung ultrasound in children with community acquired pneumonia. *The American Journal of Emergency Medicine*. **35** (7), 964-969 (2017).
3. Volpicelli, G. et al. International evidence-based recommendations for point-of-care lung ultrasound. *Intensive Care Medicine*. **38** (4), 577-591 (2012).
4. Hiles, M., Culpán, A.M., Watts, C., Munyombwe, T., Wolstenhulme, S. Neonatal respiratory distress syndrome: chest X-ray or lung ultrasound? A systematic review. *Ultrasound*. **25** (2), 80-91 (2017).
5. Liu, J., Cao, H.Y., Wang, X.L., Xiao, L.J. The significance and the necessity of routinely performing lung ultrasound in the neonatal intensive care units. *The Journal of Maternal-Fetal & Neonatal Medicine*. **29** (24), 4025-4030 (2016).
6. Cattarossi, L., Copetti, R., Poskurica, B. Radiation exposure early in life can be reduced by lung ultrasound. *Chest*. **139** (3), 730-731 (2011).
7. Kurepa, D., Zaghloul, N., Watkins, L., Liu, J. Neonatal lung ultrasound exam guidelines. *Journal of Perinatology*. **38** (1), 11-22 (2018).
8. Chen, S.W., Fu, W., Liu, J., Wang, Y. Routine application of lung ultrasonography in the neonatal intensive care unit. *Medicine*. **96** (2), e5826 (2017).
9. Lichtenstein, D. A., Mauriat, P. Lung ultrasound in the critically ill neonate. *Current Pediatric Reviews*. **8** (3), 217-223 (2012).

786 10 Liu, J., Ren, X.L., Fu, W., Liu, Y., Xia, R.M. Bronchoalveolar lavage for the treatment of
787 neonatal pulmonary atelectasis under lung ultrasound monitoring. *The Journal of Maternal-Fetal*
788 *& Neonatal Medicine*. **30** (19), 2362-2366 (2016).

789 11. Liu, J., Ren, X.L., Li, J.J. POC-LUS Guiding Pleural Puncture Drainage to Treat Neonatal
790 Pulmonary Atelectasis Caused by Congenital Massive Effusion. *The Journal of Maternal-Fetal &*
791 *Neonatal Medicine* (2018).

792 12 Lichtenstein, D. A., Menu, Y. A bedside ultrasound sign ruling out pneumothorax in the
793 critically ill. *Chest*. **108** (5), 1345-1348(1995).

794 13 Piette, E., Daoust, R., Denault, A. Basic concepts in the use of thoracic and lung ultrasound.
795 *Current Opinion in Anaesthesiology*. **26** (1), 20-30 (2013).

796 14 Volpicelli, G. et al. Detection of sonographic B-lines in patients with normal lung or
797 radiographic alveolar consolidation. *Medical Science Monitor*. **14** (3), 122-128 (2008).

798 15 Dietrich, C. F. et al. Lung B-line artefacts and their use. *Journal of Thoracic Disease*. **8** (6),
799 1356-1365 (2016).

800 16 Copetti, R., Cattarossi, L., Macagno, F., Violino, M., Furlan, R. Lung ultrasound in
801 respiratory distress syndrome: a useful tool for early diagnosis. *Neonatology*. **94** (1), 52-59 (2008).

802 17 Lichtenstein, D. A., Lascols, N., Mezière, G., Gepner, A. Ultrasound diagnosis of alveolar
803 consolidation in the critically ill. *Intensive Care Medicine*. **30** (2), 276-281 (2004).

804 18 Touw, H. R., Tuinman, P. R., Gelissen, H. P., Lust, E., Elbers, P. W. Lung ultrasound: routine
805 practice for the next generation of internists. *Netherlands Journal of Medicine*. **73** (3), 100-
806 107(2015).

807 19 Lichtenstein, D. A., Lascols, N., Prin, S., Mezière, G. The "lung pulse": an early ultrasound
808 sign of complete atelectasis. *Intensive Care Medicine*. **29** (12), 2187-2192(2003).

809 20 Lichtenstein, D., Mezière, G., Biderman, P., Gepner, A. The "lung point": an ultrasound
810 sign specific to pneumothorax. *Intensive Care Medicine*. **26** (10), 1434-1440(2000).

811 21 Copetti, R., Cattarossi, L. The double lung point: an ultrasound sign diagnostic of transient
812 tachypnea of the newborn. *Neonatology*. **91** (3), 203-209(2007).

813 22 Lichtenstein, D. A. et al. Ultrasound diagnosis of occult pneumothorax. *Critical Care*
814 *Medicine*. **33** (6), 1231-1238 (2005).

815 23 Liu, J. Lung ultrasonography for the diagnosis of neonatal lung disease. *Journal of*
816 *Maternal-Fetal Neonatal Medicine*. **27**(8), 856-861 (2014).

817 24 Chen, S. W., Zhang, M. Y., Liu, J. Application of Lung Ultrasonography in the Diagnosis of
818 Childhood Lung Diseases. *Chinese Medical Journal*. **128**(19), 2672-2678(2015).

819 25 Koivisto, M. et al. Changing incidence and outcome of infants with respiratory distress
820 syndrome in the 1990s: a population-based survey. *Acta Paediatrica*. **93** (2), 177-184 (2004).

821 26 Ayachi, A. et al. Hyaline membrane disease in full-term neonates. *Archives de Pédiatrie*. **12**
822 (20), 156-159 (2005).

823 27 Liu, J., et al. Clinical characteristics, diagnosis and management of respiratory distress
824 syndrome in full-term neonates. *Chinese Medical Journal*. **123** (19), 2640- 2644 (2010).

825 28 Zhang, Y., Li., P. Meta-analysis of lung ultrasound for the diagnosis of neonatal respiratory
826 distress syndrome. *China Medical Herald*. **14** (24), 139-142 (2017).

827 29 Lovrenski, J. Lung ultrasonography of pulmonary complications in preterm infants with
828 respiratory distress syndrome. *Uppsala Journal of Medical Sciences*. **117** (1), 10-17(2012).

829 30 Lovrenski, J., Sorantin, E., Stojanovic, S., Doronjski, A., Lovrenski, A. Evaluation of
830 surfactant replacement therapy effects: a new potential role of lung ultrasound. *Srpski Arhiv za*
831 *Celokupno Lekarstvo*. **143** (11-12), 669-675 (2015).

832 31 Liu, J., Cao, H. Y., Wang, H. W., Kong, X. Y. The role of lung ultrasound in diagnosis of
833 respiratory distress syndrome in newborn infants. *Iranian Journal of Pediatrics*. **24** (2), 147-
834 154(2014).

835 32 Liu, J., Cao, H. Y., Liu, Y. Lung ultrasonography for the diagnosis of neonatal respiratory
836 distress syndrome: a pilot study. *Chinese Journal of Pediatrics*. **51** (3), 205-210 (2013).

837 33 Liu, J., Wang, Y., Fu, W., Yang, C.S., Huang, J.J. Diagnosis of neonatal transient tachypnea
838 and its differentiation from respiratory distress syndrome using lung ultrasound. *Medicine*. **93**
839 (27), e197 (2014).

840 34 Vergine, M., Copetti, R., Brusa, G., Cattarossi, L. Lung ultrasound accuracy in respiratory
841 distress syndrome and transient tachypnea of the newborn. *Neonatology*. **106** (2), 87-93(2014).

842 35 Abu-Shaweesh, J. M. Respiratory disorder in preteen and term infants. In *Fanaroff and*
843 *Martin's Neonatal-Perinatal Medicine*. Martin, R. J., Fanaroff, A. A., Walsh, M. C. eds. 1141-1170.
844 Mosby. St. Louis, Missouri (2011).

845 36 Greenough, A. Transient tachypnea of the newborn. In *Neonatal Respiratory Disorder*
846 Greenough, A., Milner, A. D., eds. 272-277. CRC Press. London, UK (2003).

847 37 Rocha, G., Rodrigues, M., Guimarães, H. Respiratory distress syndrome of the preterm
848 neonate-placenta and necropsy as witnesses. *Journal of Maternal-Fetal & Neonatal Medicine*. **24**
849 (1), 148-151 (2011)

850 38 Liu, J. et al. Lung ultrasonography to diagnose transient tachypnea of the newborn. *Chest*.
851 **149** (5), 1269-1275 (2016).

852 39 Liu, J. et al. Value of lung ultrasound on diagnosing transient tachypnea of the newborn.
853 *Journal of Applied Clinical Pediatrics*. **31** (2), 93-96 (2016).

854 40 Duke, T. Neonatal pneumonia in developing countries. *Archives of Disease in Childhood -*
855 *Fetal and Neonatal Edition*. **90** (3), 211-219(2005).

856 41 Rao, Y. Analysis of death reasons in 1509 newborn infants. *Zhongguo Fuyou Jiankang*
857 *Yanjiu*. **20** (5), 686-688(2009).

858 42 Chavez, M. A. et al. Lung ultrasound for the diagnosis of pneumonia in adults: a systematic
859 review and meta-analysis. *Respiratory Research*. **15**, 50 (2014).

860 43 Pereda, M. A. et al. Lung ultrasound for the diagnosis of pneumonia in children: a meta-
861 analysis. *Pediatrics*. **135** (4), 714-722(2015).

862 44 Caiulo, V. A., et al. Lung ultrasound characteristics of community-acquired pneumonia in
863 hospitalized children. *Pediatric Pulmonology*. **48** (3), 280-287 (2013).

864 45 Reissig, A. et al. Lung Ultrasound in the Diagnosis and Follow-up of Community-Acquired
865 Pneumonia:A Prospective, Multicenter, Diagnostic Accuracy Study. *Chest*, 142(4), 965-972(2012).

866 46 Liu, J., Liu, F., Liu, Y., Wang, H.W., Feng, Z.C. Lung ultrasonography for the diagnosis of
867 severe neonatal pneumonia. *Chest*. **146** (2), 383-388 (2014).

868 47 Liu, J., et al. Value of lung ultrasound in diagnosing infectious pneumonia of newborns. *Chinese*
869 *Journal of Perinatal Medicine*, **17** (7), 468-472 (2014)

870 48 Rodríguez-Fanjul, J., Balcells, C., Aldecoa-Bilbao, V., Moreno, J., Iriondo, M. Lung
871 ultrasound as a predictor of mechanical ventilation in neonates older than 32 weeks.
872 *Neonatology*. **110** (3), 198-203 (2016).

873 49 Swarnam, K., Soraisham, A. S., Sivanandan, S. Advances in the management of meconium
874 aspiration syndrome. *International Journal of Pediatrics*. **2012** 359571 (2012).

875 50 Van Ierland, Y., De Beaufort, A. J. Why does meconium cause meconium aspiration
876 syndrome? Current concepts of MAS pathophysiology. *Early Human Development*. **85** (10), 617-
877 620(2009).

878 51 Piastra, M. et al. Lung ultrasound findings in meconium aspiration syndrome. *Early Human*
879 *Development*. **90**, S41-S43 (2014).

880 52 Liu, J., Cao, H.Y., Fu, W. Lung ultrasonography to diagnose meconium aspiration syndrome
881 of the newborn. *Journal of International Medical Research*. **44** (6), 1534-1542(2016).

882 53 Liu, J. et al. Lung ultrasonography for the diagnosis of meconium aspiration syndrome of
883 the newborn infants. *Chinese Journal of Applied Clinical Pediatrics*. **31** (16), 1227-1230(2016).

884 54 Zahr, R. A., Ashfaq, A., Marron-Corwin, M. Neonatal pulmonary hemorrhage. *NeoReviews*.
885 **13** (5), e302-e306 (2012).

886 55 Berger, T. M., Allred, E. N., Van Marter, L. J. Antecedents of clinically significant pulmonary
887 hemorrhage among newborn infants. *Journal of Perinatology*. **20** (5), 295-300 (2000).

888 56 Liu, J. et al. The diagnosis of neonatal pulmonary hemorrhage using lung ultrasound.
889 *Chinese Journal of Pediatrics*. **55** (1), 46-49(2017).

890 57 Ren, X.L., Fu, W., Liu, J., Liu, Y., Xia, R.M. Lung ultrasonography to diagnose pulmonary
891 hemorrhage of the newborn. *The Journal of Maternal-Fetal & Neonatal Medicine*. **30** (21), 2601-
892 2606 (2017).

893 58 Johnston, C., Carvalho, W. B. Atelectasis: mechanisms, diagnosis and treatment in the
894 pediatric patient. *Revista da Associação Médica Brasileira*. **54** (5), 455-460 (2008).

895 59 Nakos, G., Tsangaris, H., Liokatis, S., Kitsioulis, E., Lekka, M. E. Ventilator-associated
896 pneumonia and atelectasis: evaluation through bronchoalveolar lavage fluid analysis. *Intensive*
897 *Care Medicine*. **29** (4), 555-563 (2003).

898 60 Liu, J. et al. Lung ultrasound for diagnosis of neonatal atelectasis. *Chinese Journal of*
899 *Pediatrics*. **51** (9), 644-648 (2013).

900 61 Liu, J. et al. The diagnosis of neonatal pulmonary atelectasis using lung ultrasonography.
901 *Chest*. **147** (4), 1013-1019 (2015).

902 62 Lichtenstein, D., Mezière, G., Seitz, J. The dynamic air bronchogram. A lung ultrasound
903 sign of alveolar consolidation ruling out atelectasis. *Chest*. **135** (6), 1421-1425 (2009).

904 63 Duong, H. H. et al. Pneumothorax in neonates: trends, predictors and outcomes. *Journal*
905 *of Neonatal-Perinatal Medicine*. **7** (1), 29-38 (2014).

906 64 Bhatia, R., Davis, P. G., Doyle, L. W., Wong, C., Morley, C. J. Identification of pneumothorax
907 in very preterm infants. *The Journal of Pediatrics*. **159** (1), 115-120. e111 (2011).

908 65 Alrajab, S. et al. Pleural ultrasonography versus chest radiography for the
909 diagnosis of pneumothorax: review of the literature and meta-analysis. *Critical Care*. **17**, R208
910 (2013).

911 66 Cattarossi, L., Copetti, R., Brusa, G., Pintaldi, S. Lung ultrasound diagnostic accuracy in
912 neonatal pneumothorax. *Canadian Respiratory Journal*. **2016**, 6515069 (2016).

913 67 Raimondi, F. et al. Lung ultrasound for diagnosing pneumothorax in the critically ill neonate.
914 *The Journal of Pediatrics*. **175**, 74-78. e71 (2016).

915 68 Liu, J. et al. Lung ultrasonography to diagnose pneumothorax of the newborn. *The*
916 *American Journal of Emergency Medicine*. **35** (9), 1298-1302(2017).

917 69 Rodríguez-Fanjul, J., Moreno Hernando, J., Sánchez-de-Toledo, J. Lung ultrasound for
 918 cardiogenic shock in VA-ECMO. *Revista Española de Cardiología (English Edition)*. **71** (5), 393
 919 (2017).

920 70 Rodríguez-Fanjul, J. et al. Usefulness of lung ultrasound in neonatal congenital heart
 921 disease (LUSNEHDI): lung ultrasound to assess pulmonary overflow in neonatal congenital heart
 922 disease. *Pediatric Cardiology*. **37** (8), 1482-1487(2016).

923 71 Quintela, P. A. et al. Usefulness of bedside ultrasound compared to capnography and X-
 924 ray for tracheal intubation. *Anales de Pediatría*. **81** (5), 283-288 (2014).

925 72 Oulego-Erroz, I., Alonso-Quintela, P., Rodríguez-Blanco, S., Mata-Zubillaga, D., Fernández-
 926 Miaja, M. Verification of endotracheal tube placement using ultrasound during emergent
 927 intubation of a preterm infant. *Resuscitation*. **83** (6), e143-e144(2012).

928 73 Chowdhry, R., Dangman, B., Pinheiro, J. M. B. The concordance of ultrasound technique
 929 versus X-ray to confirm endotracheal tube position in neonates. *Journal of Perinatology*. **35** (7),
 930 481-484(2015).

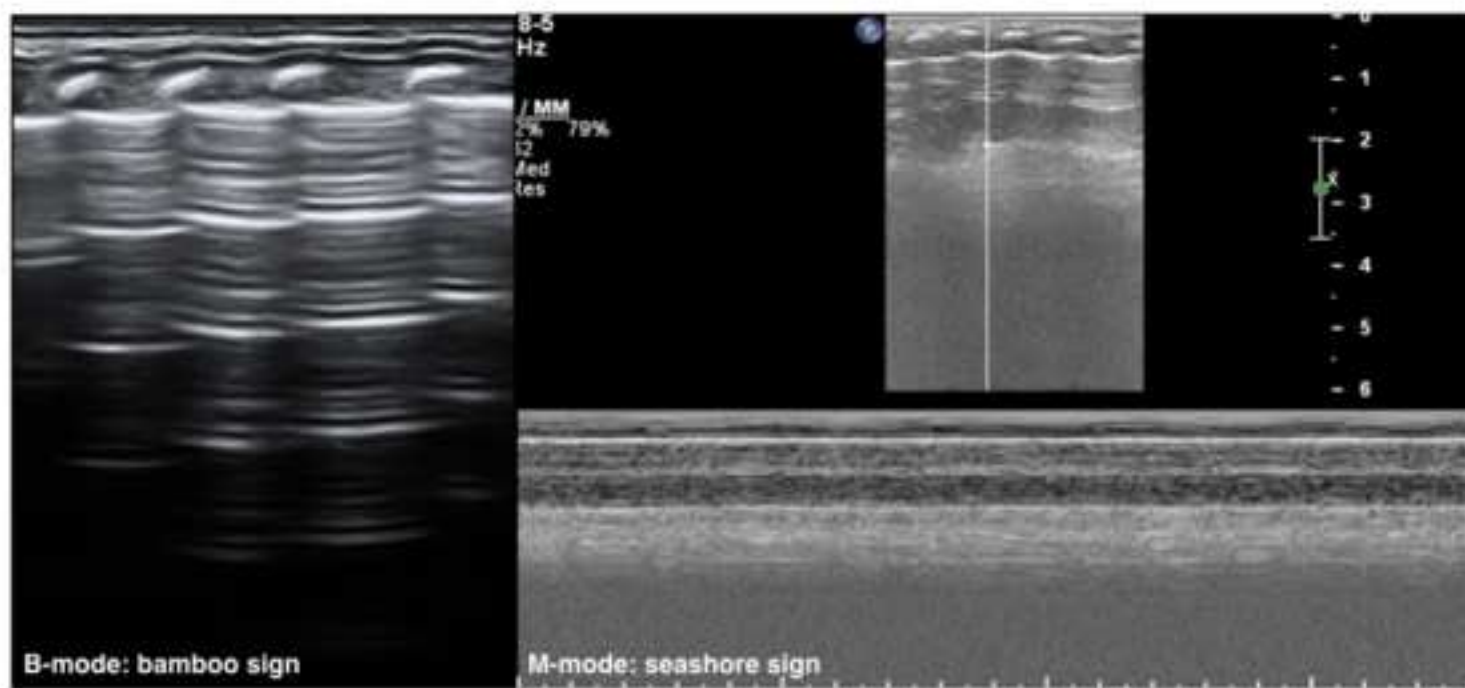
931 74 Sethi, A., Nimbalkar, A., Patel, D., Kungwani, A., Nimbalkar, S. Point of care
 932 ultrasonography for position of tip of endotracheal tube in neonates. *Indian Pediatrics*. **51** (2),
 933 119-121(2014).

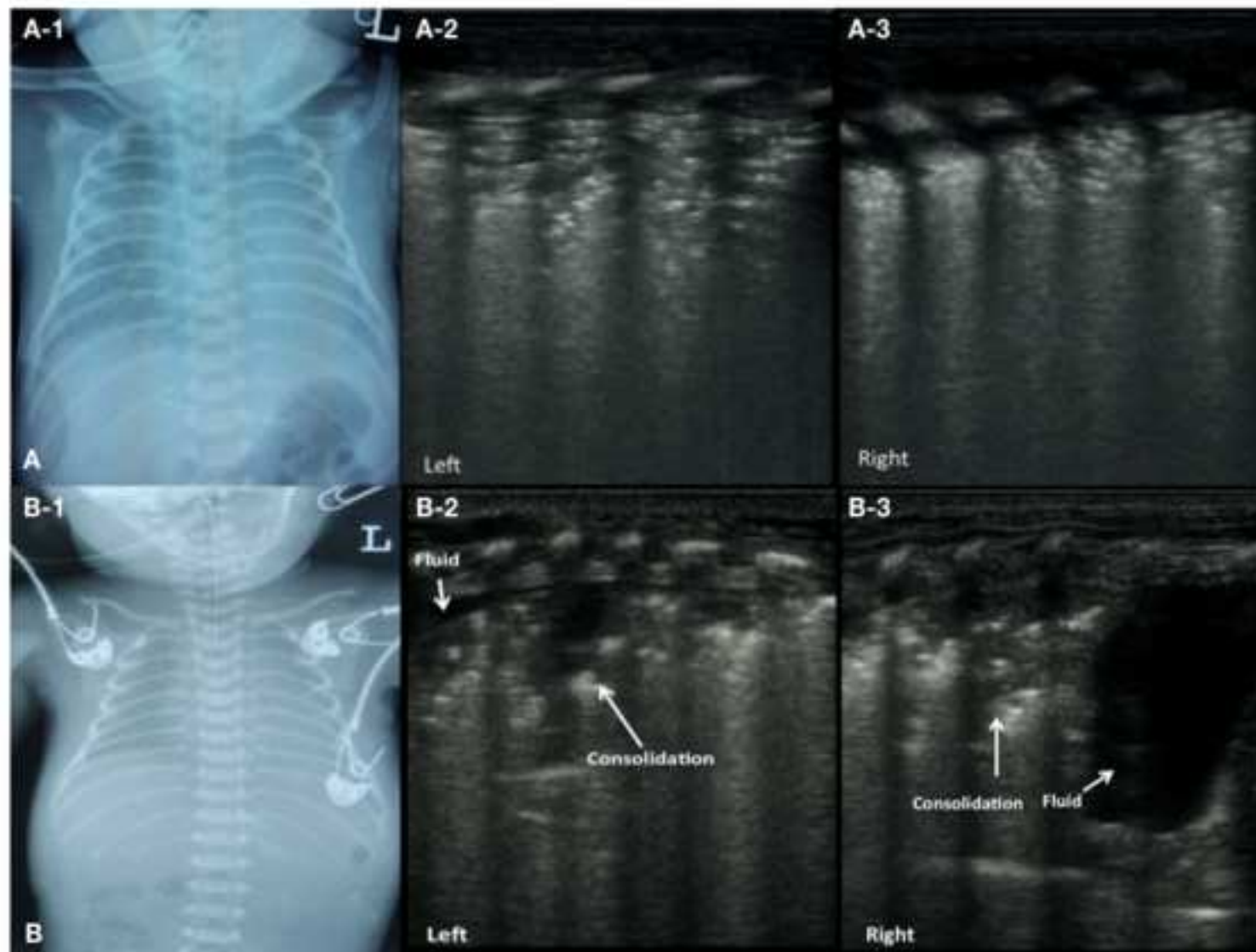
934 75 Sharma, D., Tabatabaai, S. A., Farahbakhsh, N. Role of ultrasound in confirmation of
 935 endotracheal tube in neonates: a review. *The Journal of Maternal-Fetal & Neonatal Medicine*.
 936 doi: 10.1080/14767058.2017.1403581 (2017).

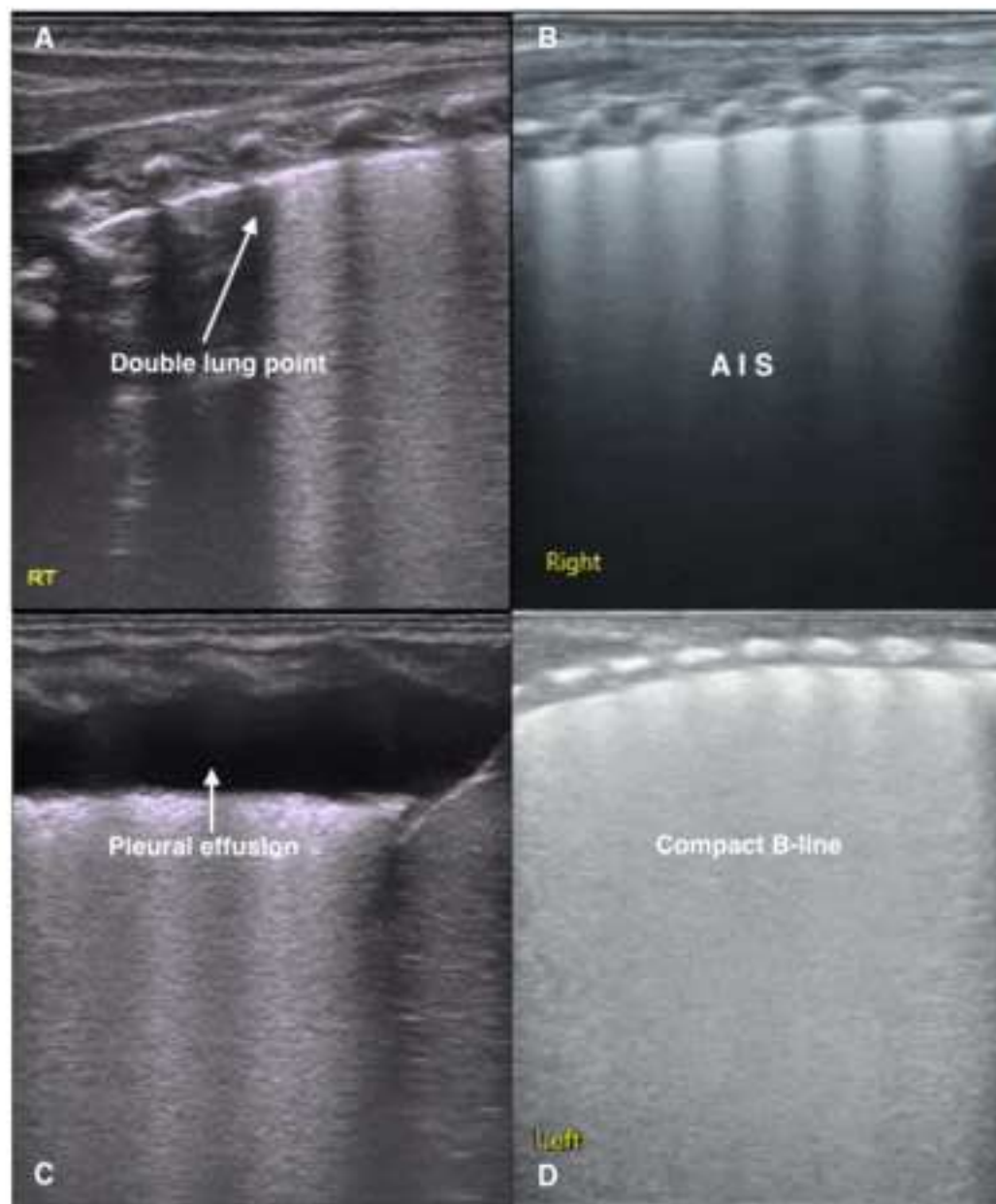
937 76 Dennington, D., Vali, P., Finer, N. N., Kim, J. H. Ultrasound confirmation of endotracheal
 938 tube position in neonates. *Neonatology*. **102** (3), 185-189(2012).

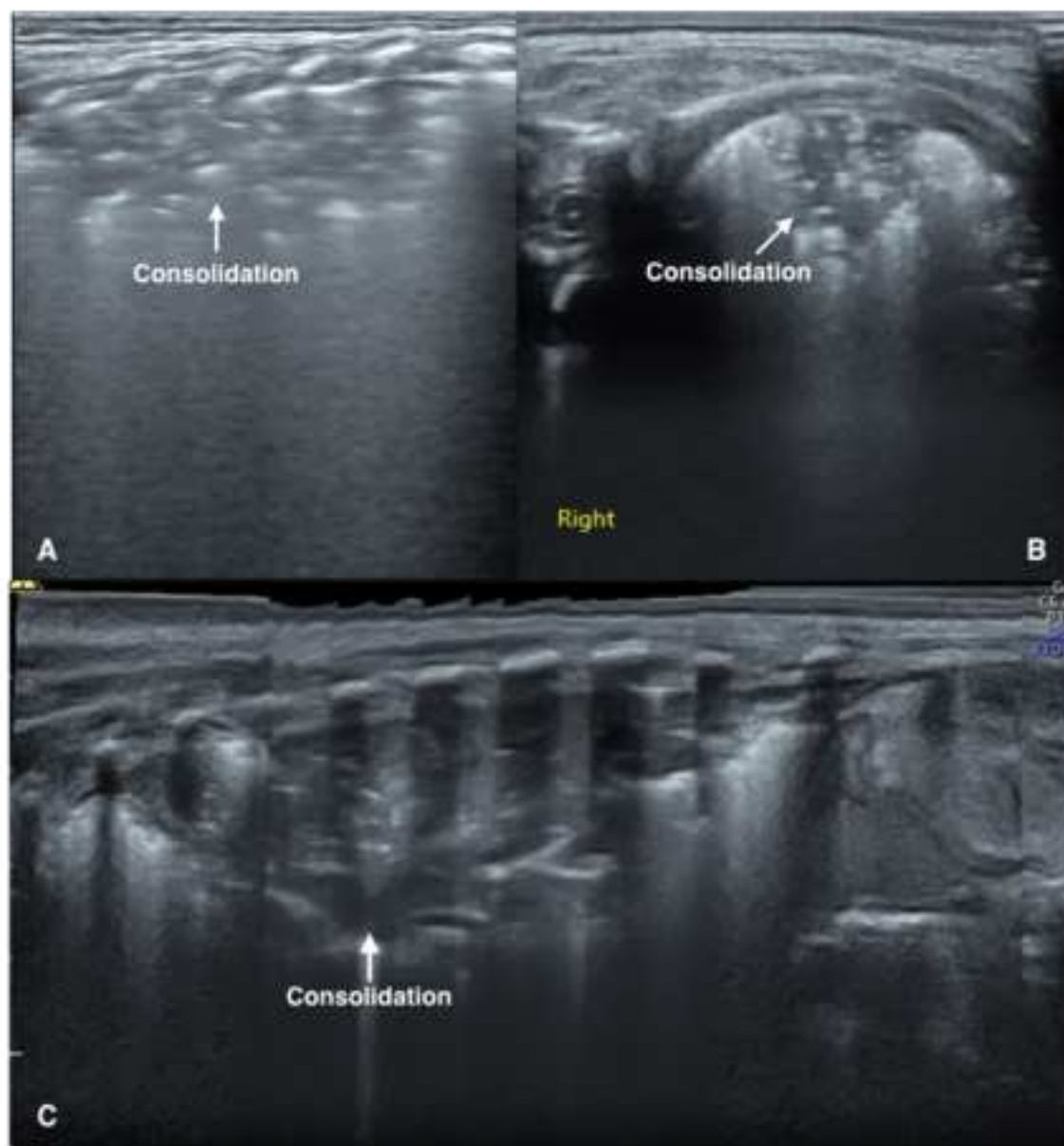
939 77 Sharma D, Farahbakhsh N. Role of chest ultrasound in neonatal lung diseases: a review of
 940 current evidences. *The Journal of Maternal-Fetal & Neonatal Medicine*. **32** (2), 310-316(2019).

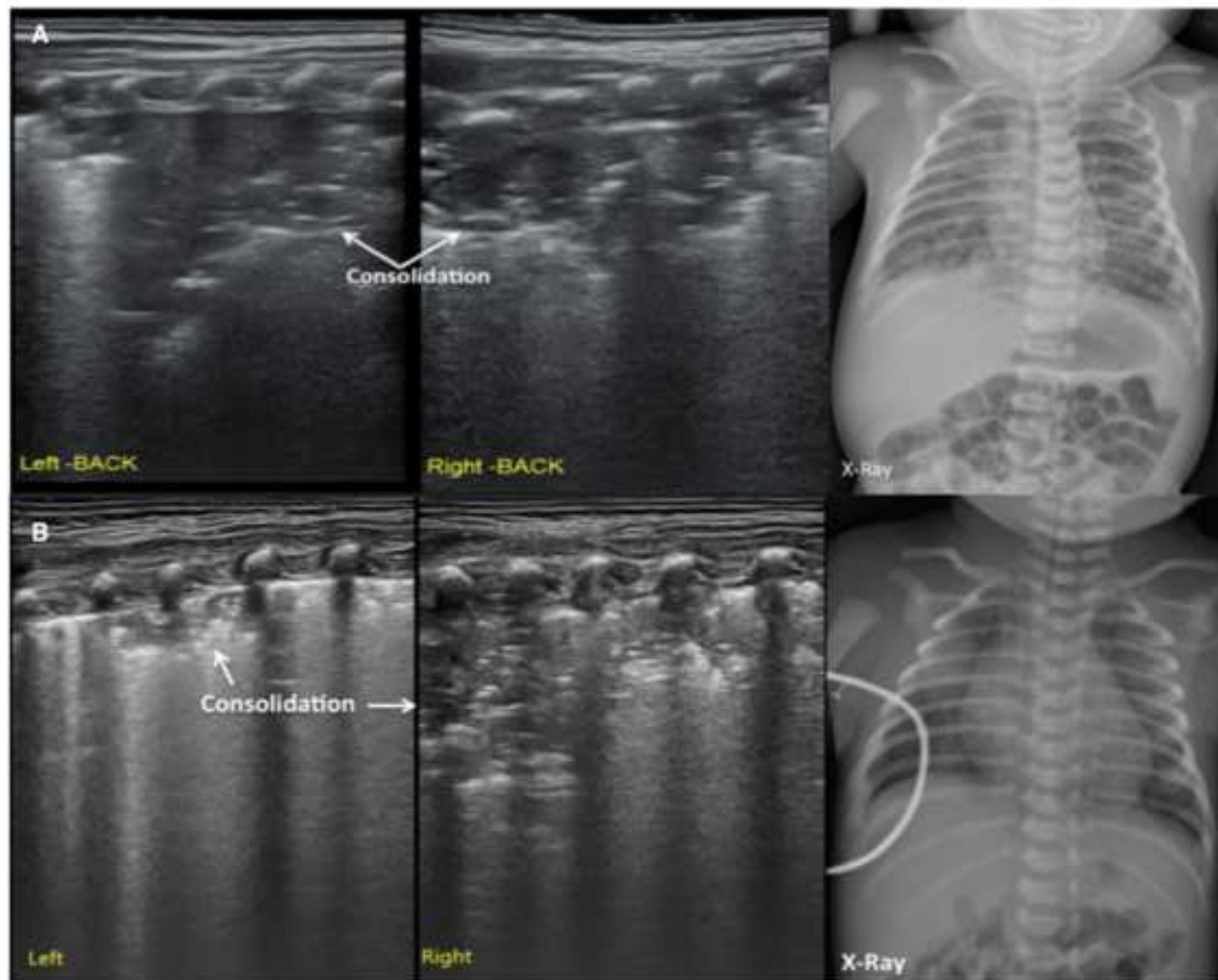
941 78 Davidsen, J. R., Bendstrup, E., Henriksen, D. P., Graumane, O., Laursen, C. B. Lung
 942 ultrasound has limited diagnostic value in rare cystic lung diseases: a cross-sectional study.
 943 *European Clinical Respiratory Journal*. **4** (1), 1330111 (2017).

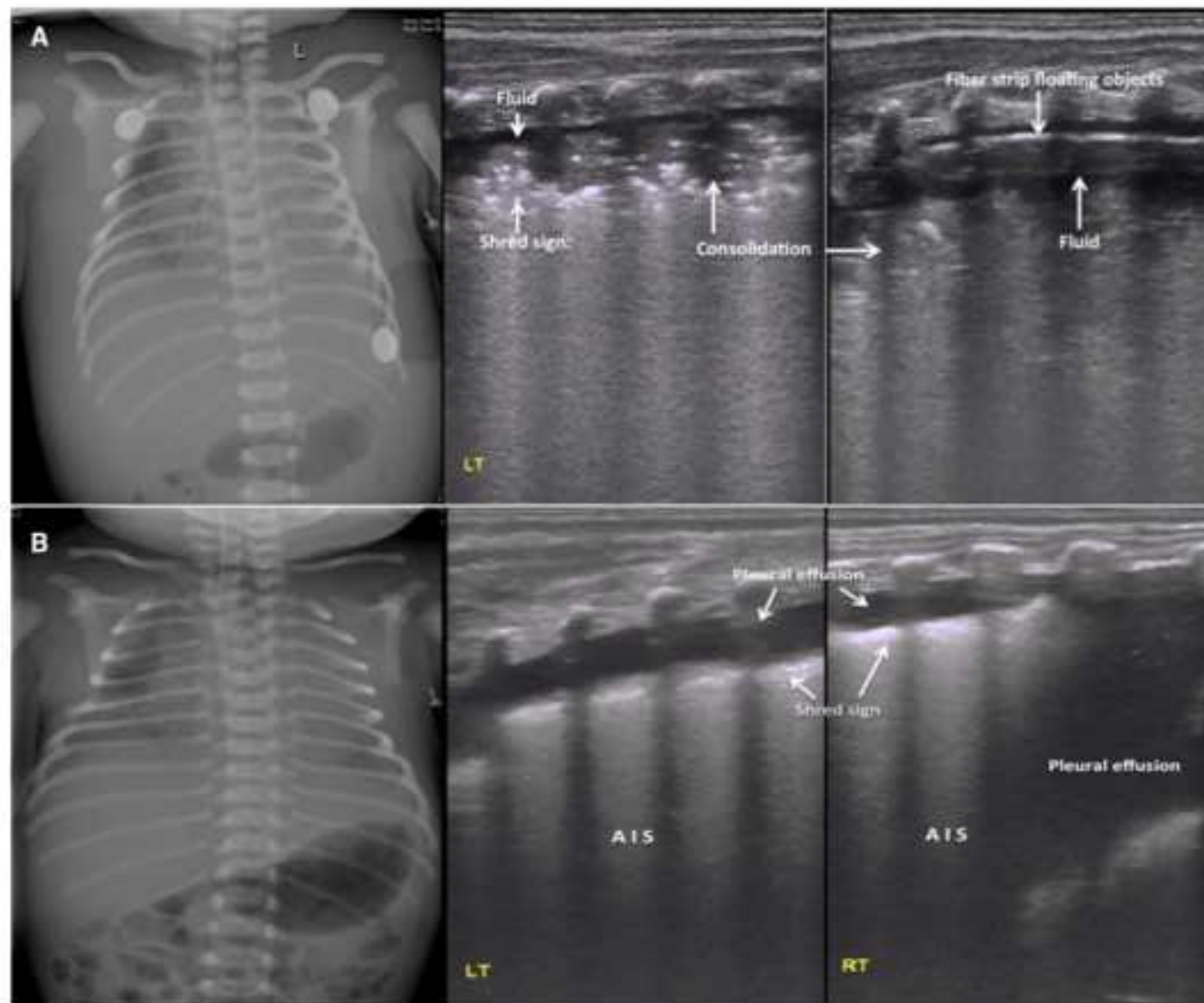


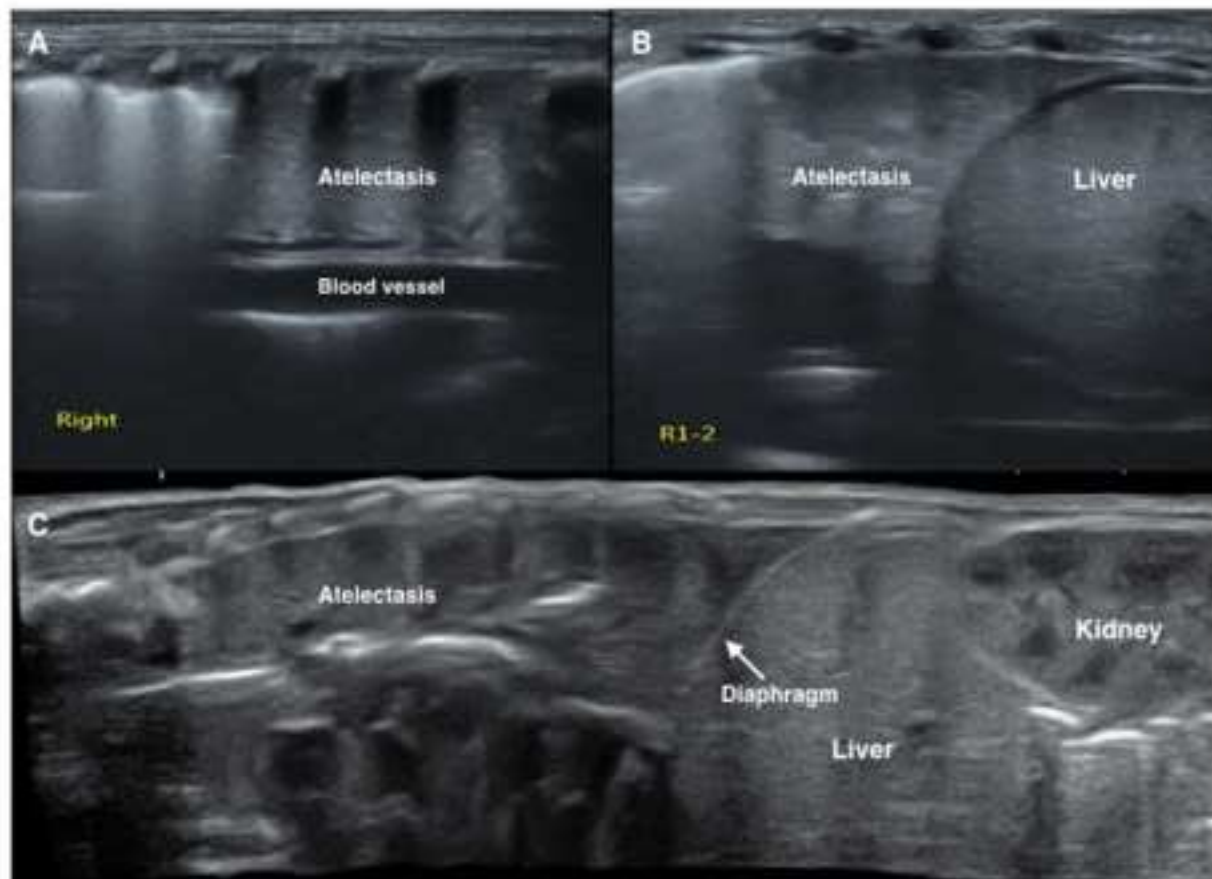


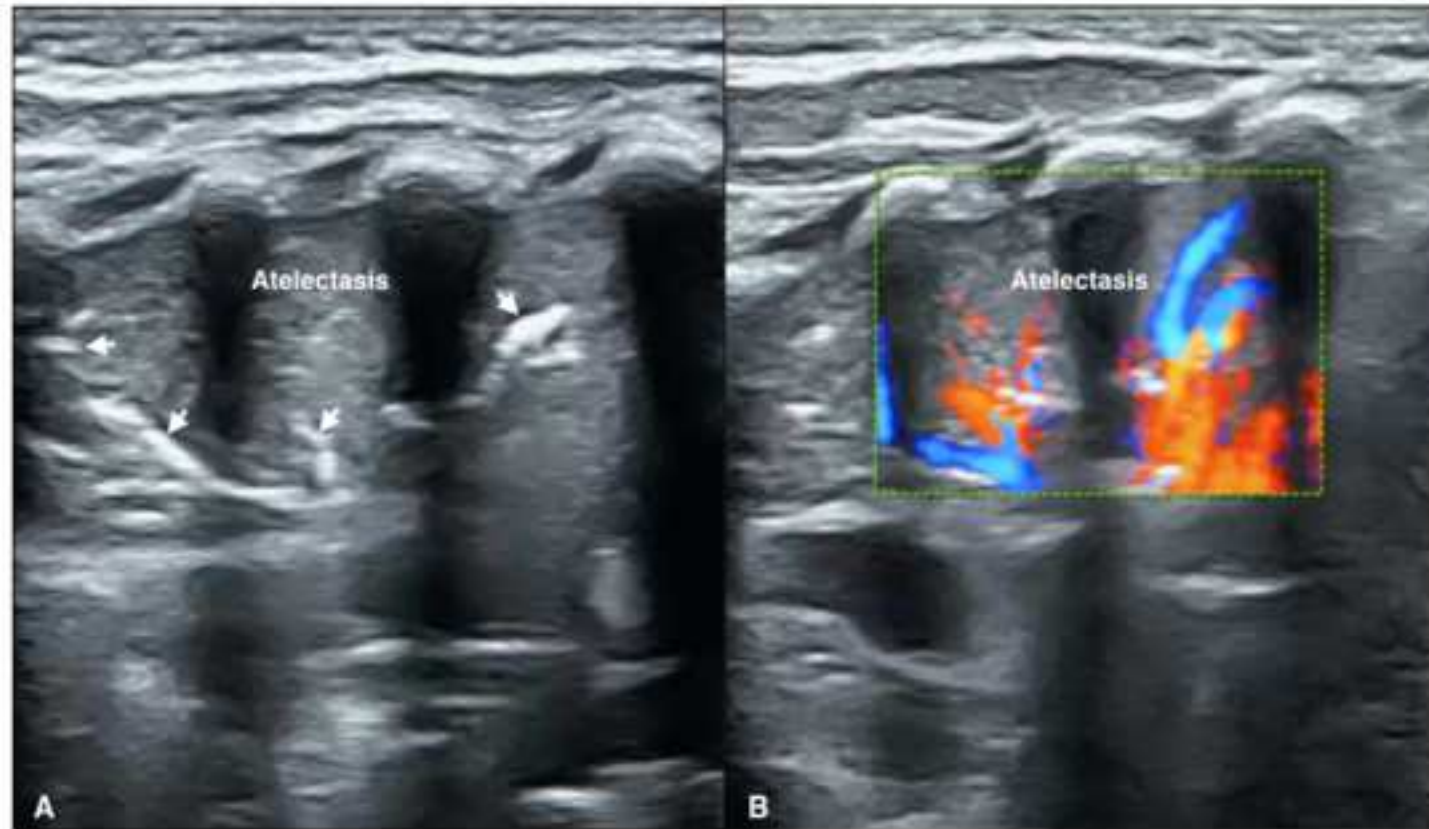












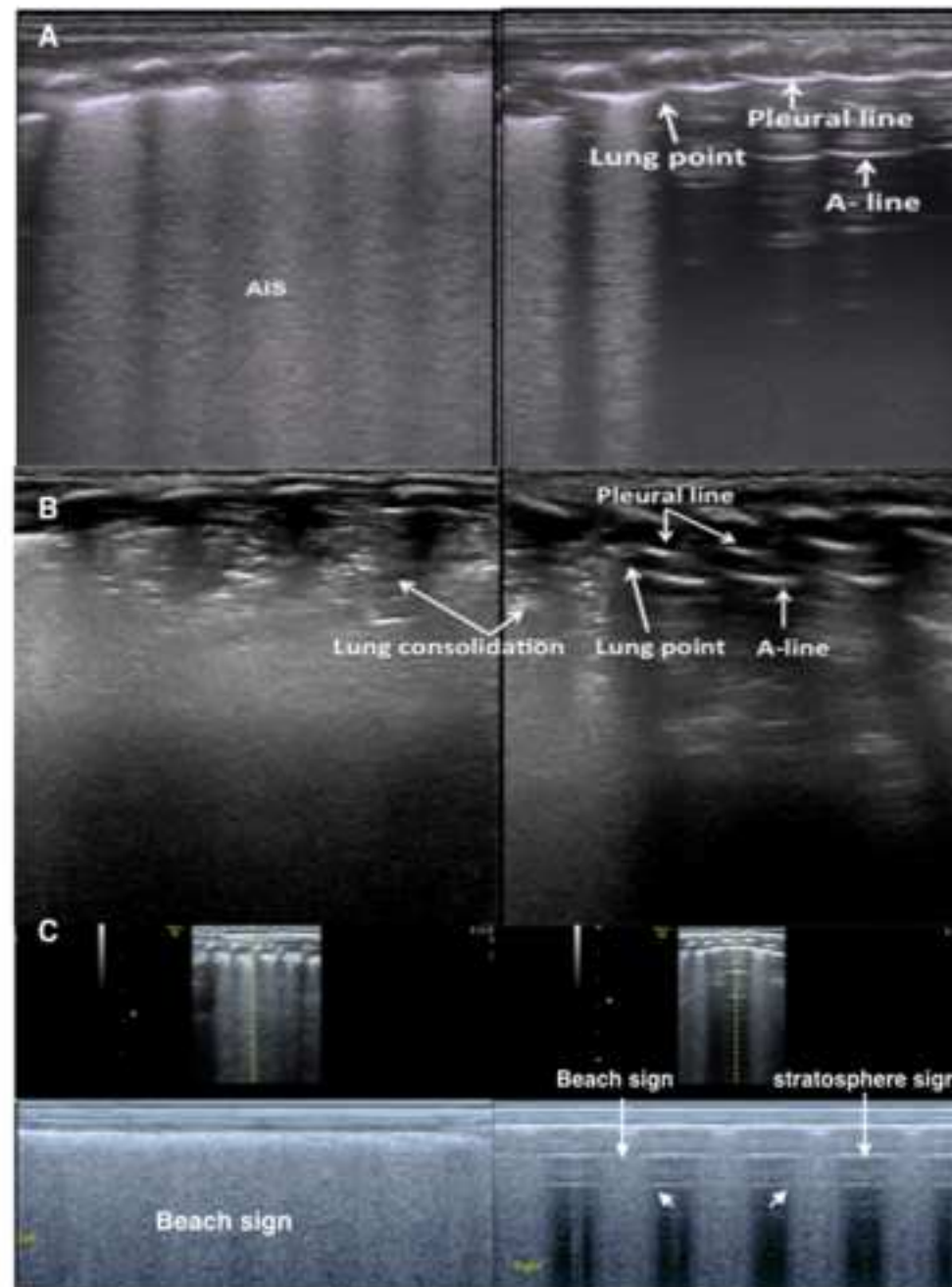
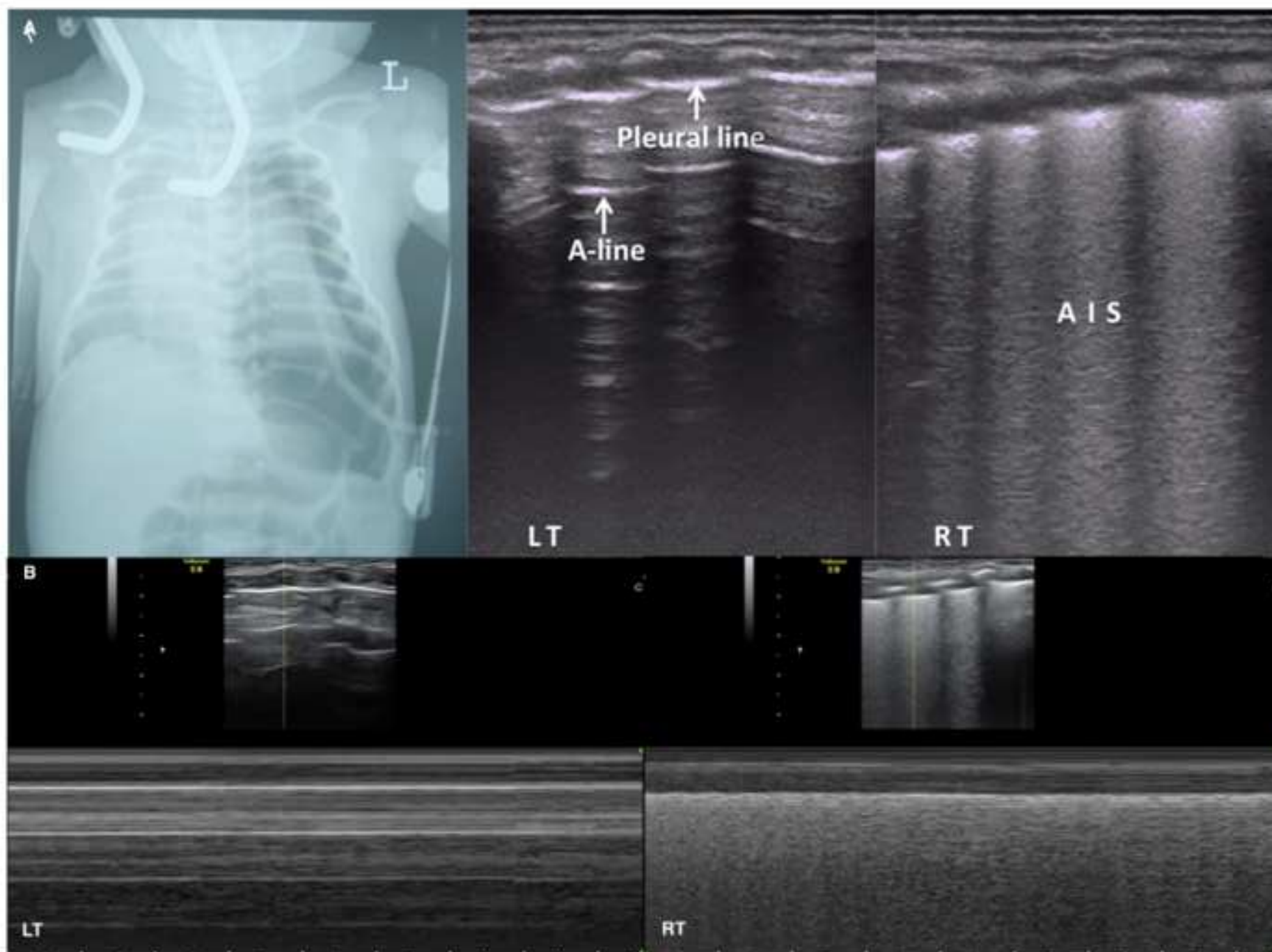
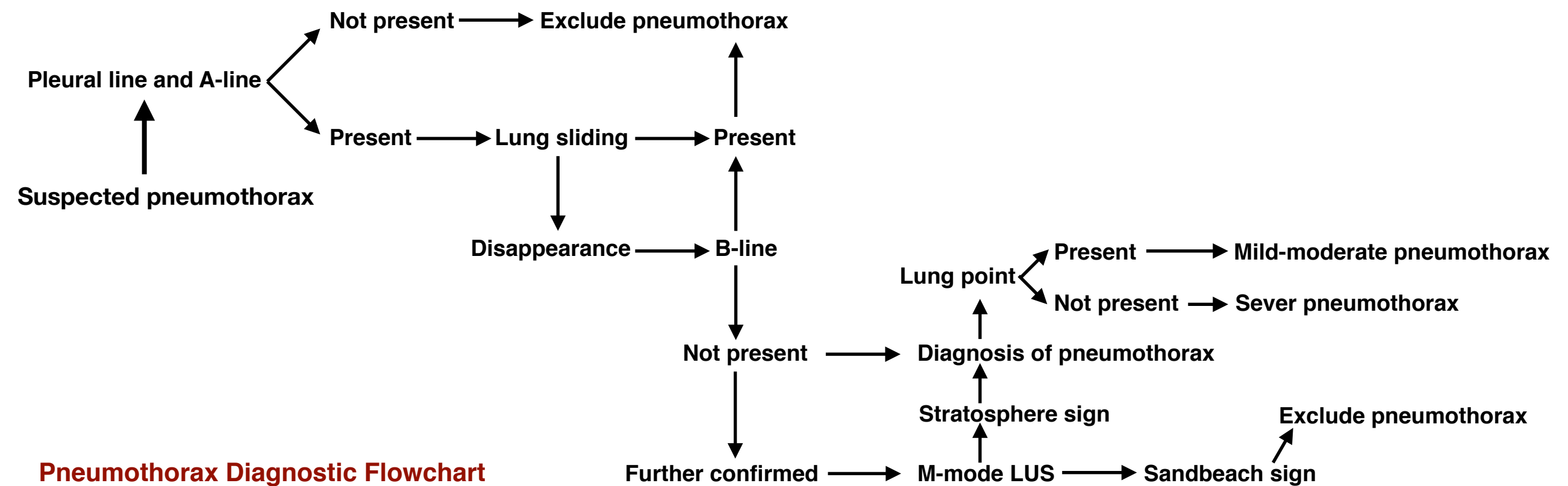


Figure 10

[Click here to access/download;Figure;Figure 10 massive pneumothorax.001.tiff](#)







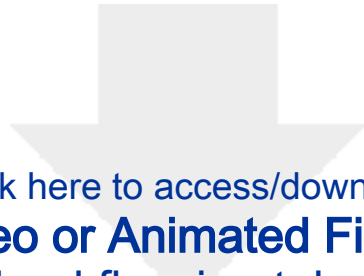
Click here to access/download
Video or Animated Figure
video.1-lung sliding.mp4





Click here to access/download
Video or Animated Figure
video.2-DAB.mov



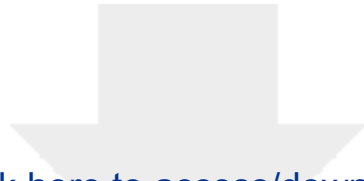


[Click here to access/download](#)

Video or Animated Figure

video.4 blood flow in atelectasis.mov



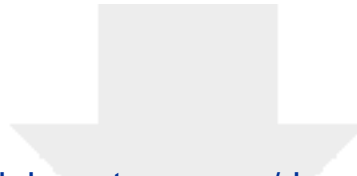


[Click here to access/download](#)

Video or Animated Figure

Video.6-Lung sliding disappearance.avi

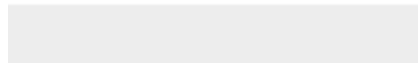




[Click here to access/download](#)

Video or Animated Figure

[supple video.1-lung pulse in atelactasis patient.avi](#)



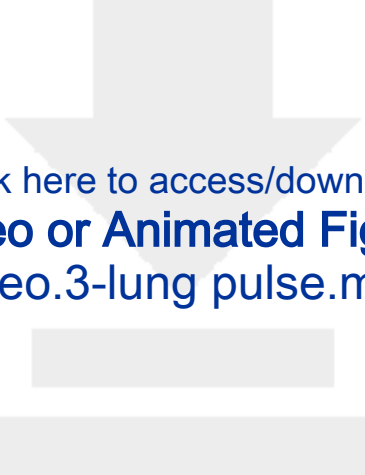


[Click here to access/download](#)

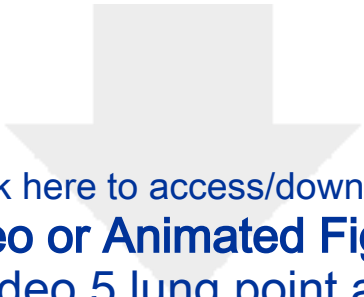
Video or Animated Figure

supple video.2 DAB in atelactisis patient.mov

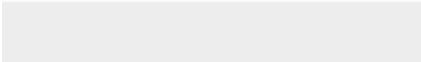





Click here to access/download
Video or Animated Figure
video.3-lung pulse.mov



Click here to access/download
Video or Animated Figure
Video.5 lung point.avi



Name of Material/ Equipment	Company	Catalog Number	Comments/Description	
Ultrasound machine	GE Healthcare	H44792LW	Ultrasound machine,Voluson S10 BT16,Probe ML6-15 & 9L	
Ultrasound machine	GE Healthcare	H48701UZ	Ultrasound machine,Voluson E10 BT18 OLED,Probe ML6-15 & 9L	
Ultrasound machine	Philips	US818C0258	Ultrasound machine,EpiQ5,Probe L18-5	
Ultrasound gel	Tianjin	TM20160195	Aquasonic 100 ultrasound transmission gel	
Disinfection wipe	Nantong	YZB0016-2013	Benzalkonium Bromide Patches	

ARTICLE AND VIDEO LICENSE AGREEMENT

Title of Article: **Standardized Protocol and Guidelines for Point-of-Care Lung Ultrasound (POC-LUS) in Diagnosing Neonatal Pulmonary Diseases: the International Expert Consensus**

Author(s):

Item 1 (check one box): **Jing Liu¹, Roberto Copetti², Erich Sorantin³, Jovan Lovrenski⁴, Javier Rodriguez-Fanjul⁵, Dalibor Korec⁶, The Anh Fong⁷, Luigi Cattalini⁸, Huayan Zhang⁹, Misun Fwang¹⁰, Tsu F. Yeh¹¹, Yisrael Lipiner⁶, Abhay Lodha¹², Jia-Qin Wang¹³, Hai-Ying Cao¹⁴, Cai-Bao Hu¹⁵, Guo-Rong Lyu¹⁶, Xin-Ru Qiu¹, Li-Qun Jia¹⁷, Xiao-Man Wang¹⁷, Xiao-Ling Ren¹, Jiu-Ye Guo¹, Yue-Qiao Gao¹, Jian-Jun Li¹, Ying Liu¹, Wei Fu¹, Yan Wang¹⁸, Zu-Lin Lu¹, Hua-Wei**

http://www.jove.com/author/ via: ☐ Standard Access ☒ Open Access

Item 2 (check one box):

- ☒ The Author is NOT a United States government employee.
- ☐ The Author is a United States government employee and the Materials were prepared in the course of his or her duties as a United States government employee.
- ☐ The Author is a United States government employee but the Materials were NOT prepared in the course of his or her duties as a United States government employee.

ARTICLE AND VIDEO LICENSE AGREEMENT

1. **Defined Terms.** As used in this Article and Video License Agreement, the following terms shall have the following meanings: **"Agreement"** means this Article and Video License Agreement; **"Article"** means the article specified on the last page of this Agreement, including any associated materials such as texts, figures, tables, artwork, abstracts, or summaries contained therein; **"Author"** means the author who is a signatory to this Agreement; **"Collective Work"** means a work, such as a periodical issue, anthology or encyclopedia, in which the Materials in their entirety in unmodified form, along with a number of other contributions, constituting separate and independent works in themselves, are assembled into a collective whole; **"CRC License"** means the Creative Commons Attribution-Non Commercial-No Derivs 3.0 Unported Agreement, the terms and conditions of which can be found at: <http://creativecommons.org/licenses/by-nc-nd/3.0/legalcode>; **"Derivative Work"** means a work based upon the Materials or upon the Materials and other pre-existing works, such as a translation, musical arrangement, dramatization, fictionalization, motion picture version, sound recording, art reproduction, abridgment, condensation, or any other form in which the Materials may be recast, transformed, or adapted; **"Institution"** means the institution, listed on the last page of this Agreement, by which the Author was employed at the time of the creation of the Materials; **"JoVE"** means MyJoVE Corporation, a Massachusetts corporation and the publisher of *The Journal of Visualized Experiments*; **"Materials"** means the Article and / or the Video; **"Parties"** means the Author and JoVE; **"Video"** means any video(s) made by the Author, alone or in conjunction with any other parties, or by JoVE or its affiliates or agents, individually or in collaboration with the Author or any other parties, incorporating all or any portion of the Article, and in which the Author may or may not appear.

2. **Background.** The Author, who is the author of the Article, in order to ensure the dissemination and protection of the Article, desires to have the JoVE publish the Article and create and transmit videos based on the Article. In furtherance of such goals, the Parties desire to memorialize in this Agreement the respective rights of each Party in and to the Article and the Video.

3. **Grant of Rights in Article.** In consideration of JoVE agreeing to publish the Article, the Author hereby grants to JoVE, subject to **Sections 4** and **7** below, the exclusive, royalty-free, perpetual (for the full term of copyright in the Article, including any extensions thereto) license (a) to publish, reproduce, distribute, display and store the Article in all forms, formats and media whether now known or hereafter developed (including without limitation in print, digital and electronic form) throughout the world, (b) to translate the Article into other languages, create adaptations, summaries or extracts of the Article or other Derivative Works (including, without limitation, the Video) or Collective Works based on all or any portion of the Article and exercise all of the rights set forth in (a) above in such translations, adaptations, summaries, extracts, Derivative Works or Collective Works and (c) to license others to do any or all of the above. The foregoing rights may be exercised in all media and formats, whether now known or hereafter devised, and include the right to make such modifications as are technically necessary to exercise the rights in other media and formats. If the "Open Access" box has been checked in **Item 1** above, JoVE and the Author hereby grant to the public all such rights in the Article as provided in, but subject to all limitations and requirements set forth in, the CRC License.

ARTICLE AND VIDEO LICENSE AGREEMENT

4. Retention of Rights in Article. Notwithstanding the exclusive license granted to JoVE in **Section 3** above, the Author shall, with respect to the Article, retain the non-exclusive right to use all or part of the Article for the non-commercial purpose of giving lectures, presentations or teaching classes, and to post a copy of the Article on the Institution's website or the Author's personal website, in each case provided that a link to the Article on the JoVE website is provided and notice of JoVE's copyright in the Article is included. All non-copyright intellectual property rights in and to the Article, such as patent rights, shall remain with the Author.

5. Grant of Rights in Video – Standard Access. This **Section 5** applies if the "Standard Access" box has been checked in **Item 1** above or if no box has been checked in **Item 1** above. In consideration of JoVE agreeing to produce, display or otherwise assist with the Video, the Author hereby acknowledges and agrees that, Subject to **Section 7** below, JoVE is and shall be the sole and exclusive owner of all rights of any nature, including, without limitation, all copyrights, in and to the Video. To the extent that, by law, the Author is deemed, now or at any time in the future, to have any rights of any nature in or to the Video, the Author hereby disclaims all such rights and transfers all such rights to JoVE.

6. Grant of Rights in Video – Open Access. This **Section 6** applies only if the "Open Access" box has been checked in **Item 1** above. In consideration of JoVE agreeing to produce, display or otherwise assist with the Video, the Author hereby grants to JoVE, subject to **Section 7** below, the exclusive, royalty-free, perpetual (for the full term of copyright in the Article, including any extensions thereto) license (a) to publish, reproduce, distribute, display and store the Video in all forms, formats and media whether now known or hereafter developed (including without limitation in print, digital and electronic form) throughout the world, (b) to translate the Video into other languages, create adaptations, summaries or extracts of the Video or other Derivative Works or Collective Works based on all or any portion of the Video and exercise all of the rights set forth in (a) above in such translations, adaptations, summaries, extracts, Derivative Works or Collective Works and (c) to license others to do any or all of the above. The foregoing rights may be exercised in all media and formats, whether now known or hereafter devised, and include the right to make such modifications as are technically necessary to exercise the rights in other media and formats. For any Video to which this Section 6 is applicable, JoVE and the Author hereby grant to the public all such rights in the Video as provided in, but subject to all limitations and requirements set forth in, the CRC License.

7. Government Employees. If the Author is a United States government employee and the Article was prepared in the course of his or her duties as a United States government employee, as indicated in **Item 2** above, and any of the licenses or grants granted by the Author hereunder exceed the scope of the 17 U.S.C. 403, then the rights granted hereunder shall be limited to the maximum rights permitted under such

statute. In such case, all provisions contained herein that are not in conflict with such statute shall remain in full force and effect, and all provisions contained herein that do so conflict shall be deemed to be amended so as to provide to JoVE the maximum rights permissible within such statute.

8. Likeness, Privacy, Personality. The Author hereby grants JoVE the right to use the Author's name, voice, likeness, picture, photograph, image, biography and performance in any way, commercial or otherwise, in connection with the Materials and the sale, promotion and distribution thereof. The Author hereby waives any and all rights he or she may have, relating to his or her appearance in the Video or otherwise relating to the Materials, under all applicable privacy, likeness, personality or similar laws.

9. Author Warranties. The Author represents and warrants that the Article is original, that it has not been published, that the copyright interest is owned by the Author (or, if more than one author is listed at the beginning of this Agreement, by such authors collectively) and has not been assigned, licensed, or otherwise transferred to any other party. The Author represents and warrants that the author(s) listed at the top of this Agreement are the only authors of the Materials. If more than one author is listed at the top of this Agreement and if any such author has not entered into a separate Article and Video License Agreement with JoVE relating to the Materials, the Author represents and warrants that the Author has been authorized by each of the other such authors to execute this Agreement on his or her behalf and to bind him or her with respect to the terms of this Agreement as if each of them had been a party hereto as an Author. The Author warrants that the use, reproduction, distribution, public or private performance or display, and/or modification of all or any portion of the Materials does not and will not violate, infringe and/or misappropriate the patent, trademark, intellectual property or other rights of any third party. The Author represents and warrants that it has and will continue to comply with all government, institutional and other regulations, including, without limitation all institutional, laboratory, hospital, ethical, human and animal treatment, privacy, and all other rules, regulations, laws, procedures or guidelines, applicable to the Materials, and that all research involving human and animal subjects has been approved by the Author's relevant institutional review board.

10. JoVE Discretion. If the Author requests the assistance of JoVE in producing the Video in the Author's facility, the Author shall ensure that the presence of JoVE employees, agents or independent contractors is in accordance with the relevant regulations of the Author's institution. If more than one author is listed at the beginning of this Agreement, JoVE may, in its sole discretion, elect not take any action with respect to the Article until such time as it has received complete, executed Article and Video License Agreements from each such author. JoVE reserves the right, in its absolute and sole discretion and without giving any reason therefore, to accept or decline any work submitted to JoVE. JoVE and its employees, agents and independent contractors shall have

ARTICLE AND VIDEO LICENSE AGREEMENT

full, unfettered access to the facilities of the Author or of the Author's institution as necessary to make the Video, whether actually published or not. JoVE has sole discretion as to the method of making and publishing the Materials, including, without limitation, to all decisions regarding editing, lighting, filming, timing of publication, if any, length, quality, content and the like.

11. **Indemnification.** The Author agrees to indemnify JoVE and/or its successors and assigns from and against any and all claims, costs, and expenses, including attorney's fees, arising out of any breach of any warranty or other representations contained herein. The Author further agrees to indemnify and hold harmless JoVE from and against any and all claims, costs, and expenses, including attorney's fees, resulting from the breach by the Author of any representation or warranty contained herein or from allegations or instances of violation of intellectual property rights, damage to the Author's or the Author's institution's facilities, fraud, libel, defamation, research, equipment, experiments, property damage, personal injury, violations of institutional, laboratory, hospital, ethical, human and animal treatment, privacy or other rules, regulations, laws, procedures or guidelines, liabilities and other losses or damages related in any way to the submission of work to JoVE, making of videos by JoVE, or publication in JoVE or elsewhere by JoVE. The Author shall be responsible for, and shall hold JoVE harmless from, damages caused by lack of sterilization, lack of cleanliness or by contamination due to the making of a video by JoVE its employees, agents or independent contractors. All sterilization, cleanliness or decontamination procedures shall be solely the responsibility of the Author and shall be undertaken at the Author's

expense. All indemnifications provided herein shall include JoVE's attorney's fees and costs related to said losses or damages. Such indemnification and holding harmless shall include such losses or damages incurred by, or in connection with, acts or omissions of JoVE, its employees, agents or independent contractors.

12. **Fees.** To cover the cost incurred for publication, JoVE must receive payment before production and publication the Materials. Payment is due in 21 days of invoice. Should the Materials not be published due to an editorial or production decision, these funds will be returned to the Author. Withdrawal by the Author of any submitted Materials after final peer review approval will result in a US\$1,200 fee to cover pre-production expenses incurred by JoVE. If payment is not received by the completion of filming, production and publication of the Materials will be suspended until payment is received.

13. **Transfer, Governing Law.** This Agreement may be assigned by JoVE and shall inure to the benefits of any of JoVE's successors and assignees. This Agreement shall be governed and construed by the internal laws of the Commonwealth of Massachusetts without giving effect to any conflict of law provision thereunder. This Agreement may be executed in counterparts, each of which shall be deemed an original, but all of which together shall be deemed to be one and the same agreement. A signed copy of this Agreement delivered by facsimile, e-mail or other means of electronic transmission shall be deemed to have the same legal effect as delivery of an original signed copy of this Agreement.

A signed copy of this document must be sent with all new submissions. Only one Agreement required per submission.

CORRESPONDING AUTHOR:

Name:

Jing Liu

Department:

Department of Neonatology and NICU

Institution:

(1) Beijing Chaoyang District Maternal and Child Healthcare Hospital.

(2) Neonatal Lungs Ultrasound Training Base, Chinese College of Critical Ultrasound

Article Title:

Director, Prof.

Signature:

Jingliu

Date:

08-23-2018

Please submit a signed and dated copy of this license by one of the following three methods:

- 1) Upload a scanned copy of the document as a pdf on the JoVE submission site;
- 2) Fax the document to +1.866.381.2236;
- 3) Mail the document to JoVE / Attn: JoVE Editorial / 1 Alewife Center #200 / Cambridge, MA 02139

For questions, please email submissions@jove.com or call +1.617.945.9051

Response to reviewer and editor[JoVE58990R1]

Editorial comments:

Changes to be made by the author(s) regarding the manuscript:

1. Please take this opportunity to thoroughly proofread the manuscript to ensure that there are no spelling or grammar issues.

Response: we have invited a native English speaker to revise the manuscript carefully.

2. Please revise lines 361-363, 543-545, 587-589 to avoid previously published text.

Response: we have rewritten the related parts.

3. Please revise the Introduction to include all of the following: a) A clear statement of the overall goal of this method b) The rationale behind the development and/or use of this technique c) The advantages over alternative techniques with applicable references to previous studies d) A description of the context of the technique in the wider body of literature e) Information to help readers to determine whether the method is appropriate for their application

Response: we have revised this section and hope it is now suitable for the requirements.

4. Please include an ethics statement before the numbered protocol steps, indicating that the protocol follows the guidelines of your institution's human research ethics committee.

Response: we have added this information.

5. Please revise the protocol to contain only action items that direct the reader to do something (e.g., "Do this," "Ensure that," etc.). The actions should be described in the imperative tense in complete sentences wherever possible. Avoid usage of phrases such as "could be," "should be," and "would be" throughout the Protocol. Any text that cannot be written in the imperative tense may be added as a "Note." Please include all safety

procedures and use of hoods, etc. However, notes should be used sparingly and actions should be described in the imperative tense wherever possible. Please move the discussion about the protocol to the Discussion.

Response: we have incorporated some revisions according to the requirements.

6. Please add more details to your protocol steps. There should be enough detail in each step to supplement the actions seen in the video so that viewers can easily replicate the protocol. Please ensure you answer the “how” question, i.e., how is the step performed? Alternatively, add references to published material specifying how to perform the protocol action. See examples below.

Response: we have incorporated some revisions according to the requirements.

7. 3.2: Please specify the effective ingredients of the special disinfection wet wipe.

Response: we have revised this information.

8.3.4.2, 3.4.4 and 3.5: Please describe how to perform horizontal/parallel/diaphragm scanning.

This has been revised in detail.

9. Lines 155-457: The Protocol should be made up almost entirely of discrete steps without large paragraphs of text between sections. Please simplify the Protocol so that individual steps contain only 2-3 actions per step and a maximum of 4 sentences per step. Use substeps as necessary. Please move the discussion about the protocol to the Discussion.

We have revised this section.

10. Please add a Representative Results section to describe how do results show the technique, suggestions about how to analyze the outcome, etc. The paragraph text should refer to all of the figures. However for figures show-

ing the experimental set-up, please reference them in the Protocol. Data from both successful and sub-optimal experiments can be included.

Response: we have supplemented this section.

11. Please reduce the number of figures to less than 10 by combining some figures of small sizes.

We have incorporated these changes.

12. Figures 3, 9-15: Please combine all panels of one figure into a single image file. If the different panels are too big to combine, please number them as individual figures.

We have incorporated these changes.

13. Videos: Please number the videos continuously in the sequence in which you refer to them in the manuscript text. Please also consider including some of the videos in the supplemental files.

We have incorporated some of these changes.

14. Please revise the table of the essential supplies, reagents, and equipment to include the name, company, and catalog number of all relevant materials in separate columns in an xls/xlsx file.

We have incorporated these changes.

Reviewers' comments:

Please note that the reviewers raised some significant concerns regarding your method and your manuscript. Please thoroughly address each concern by revising the manuscript or addressing the comment in your rebuttal letter. Reviewer #1: Manuscript Summary: This manuscript summarizes the main issues on the lung ultrasound in Neonatology. Major Concerns: I don't think that this manuscript can be published as guideline because the best methodology to do guideline is the GRADE methodology. This manuscript at list can be edited

as review but only after major revision. Actually the paper is too poor in content to be published as review

Response: Dear reviewer, thank you for your comment. However, we disagree with this suggestion for the following reasons. First, this is really a guideline because it tells readers how to perform the lung ultrasound and how to use ultrasound to diagnose lung diseases. Second, all the criteria are based on long-term research results from international experts in this field. Third, We have developed this guideline after a thorough evidence-based review of the currently available data and included the opinions and suggestions from a panel of international experts in this field.

Reviewer #2: Manuscript Summary:

1. Needs revision with step by step approach for Lung ultrasound

We have revised it.

2. Diagrammatic presentation - Vertical / Horizontal / Diaphragm scanning 3. Training component should be written in a proper way. Reviewer

Thank you very much. Please note we have incorporated the related revisions.

Reviewer #3: Guidelines are well written and done following an optimal criteria. based on a consensus of experts. This work can be accepted as it is.

Many thanks for this kindly and positive comment.

