

## RosetteSep® Procedure:

Ensure that blood sample, PBS + 2% FBS (Catalog #07905), Ficoll-Paque® (Catalog #07907) and centrifuge are all at room temperature.

1. Add RosetteSep® Human NK Cell Enrichment Cocktail at **50 µL/mL** of whole blood\* (e.g. for 2 mL of whole blood, add 100 µL of cocktail). Mix well.

\*If using samples other than fresh whole blood, please see Notes and Tips


2. Incubate 20 minutes at room temperature.
3. Dilute sample with an equal volume of PBS + 2% FBS and mix gently.
4. Layer the diluted sample on top of the Ficoll-Paque®  
**OR**  
Layer the Ficoll-Paque® underneath the diluted sample.

Be careful to minimize mixing of Ficoll-Paque® and sample.


See table below for volume recommendations. With 50 mL centrifuge tubes, we suggest using a minimum of 15 mL Ficoll-Paque® to make it easier to remove the enriched cell layer.

Recommended Volumes and Tube Sizes			
Whole Blood	PBS + 2% FBS	Ficoll-Paque®	Tube Size
1 mL	1 mL	1.5 mL	5 mL
2 mL	2 mL	3 mL	14 mL
3 mL	3 mL	3 mL	14 mL
4 mL	4 mL	4 mL	14 mL
5 mL	5 mL	15 mL	50 mL
10 mL	10 mL	15 mL	50 mL
15 mL	15 mL	15 mL	50 mL

5. Centrifuge for 20 minutes at 1200 x g (See Notes and Tips) at room temperature, with the brake off.
6. Remove the enriched cells from the Ficoll-Paque® : plasma interface.  
*Sometimes it is difficult to see the cells at the interface, especially when very rare cells are enriched. It is advisable to remove some of the Ficoll-Paque® along with the enriched cells in order to ensure their complete recovery.*
7. Wash enriched cells with PBS + 2% FBS. Repeat.
8. Use enriched cells as desired. We recommend that enriched samples are lysed with ammonium chloride to remove residual red blood cells prior to flow cytometric analysis (this can be done as one of the wash steps) or if residual red blood cells will interfere with subsequent assays.

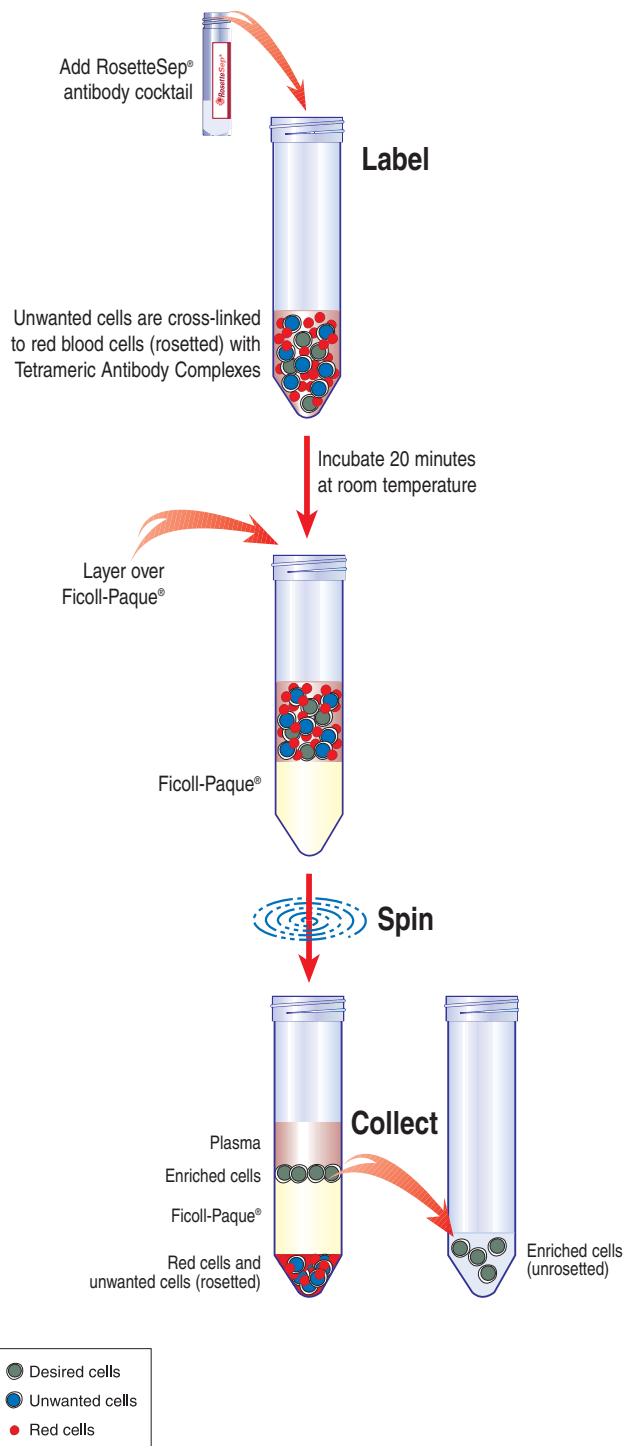


# PROCEDURE



## Human NK Cell Enrichment Cocktail

**CATALOG #15025/15065**



### StemCell Technologies

**In North America**  
Tel: 1.604.877.0713  
Fax: 1.604.877.0704  
NA Toll Free Tel: 1.800.667.0322  
NA Toll Free Fax: 1.800.567.2899  
e-mail: info@stemcell.com  
[www.stemcell.com](http://www.stemcell.com)

**In the United Kingdom**  
Tel: +44.(0).20.7537.7565  
Fax: +44.(0).20.7515.5408  
Toll Free within United Kingdom:  
Tel: 0800.731.27.14  
Fax: 0800.731.27.13  
e-mail: info@stemcellgb.com  
[www.stemcellgb.com](http://www.stemcellgb.com)

**In Europe**  
Tel: +33.(0).4.76.04.75.30  
Fax: +33.(0).4.76.18.99.63  
e-mail: info@stemcellfrance.com

Version 1.0  
May 2004

**FOR RESEARCH USE ONLY**

**#28574**

Printed on recycled paper.

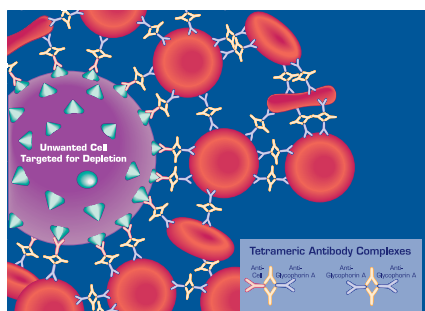
<b>Catalog #15025</b>	2 mL	For labeling 40 mL of whole blood
<b>Catalog #15065</b>	10 mL	For labeling 200 mL of whole blood

## PRODUCT DESCRIPTION & APPLICATIONS:

The RosetteSep® Human NK cell enrichment cocktail is designed to enrich NK cells from whole blood.

## ROSETTESEP® LABELING OF HUMAN CELLS:

The RosetteSep® antibody cocktail crosslinks unwanted cells in human whole blood to multiple red blood cells (RBCs), forming immunorosettes (Figure 1). This increases the density of the unwanted (rosetted) cells, such that they pellet along with the free RBCs when centrifuged over a buoyant density medium such as Ficoll-Paque®. Desired cells are never labeled with antibody and are easily collected as a highly enriched population at the interface between the plasma and the buoyant density medium.



**Figure 1.**  
Rosette of Unwanted Cell and RBCs  
Formed by RosetteSep® Tetrameric  
Antibody Complexes (TAC)

## NOTES AND TIPS:

**Recommended Medium.** Phosphate Buffered Saline (PBS) + 2% Fetal Bovine Serum (FBS) (Catalog #07905).

**Conversion of g to rpm.** To convert g to rpm, use the following formula:

$$RPM = \sqrt{\frac{RCF}{(1.118 \times 10^{-5}) \times (\text{Radius})}}$$

Where: RCF = relative centrifugal force (g)  
RPM = centrifuge speed in revolutions per minute  
Radius = radius of rotor in cm

**Samples Other than Whole Blood.** Although RosetteSep® has been optimized for use with whole blood, cells can be enriched from other sources (i.e. buffy coat, leukaphereses). The concentration of nucleated cells in the sample should not exceed  $5 \times 10^7$  cells/mL, and red blood cells (RBCs) should be present at a ratio of at least 30-50 RBCs per nucleated cell.

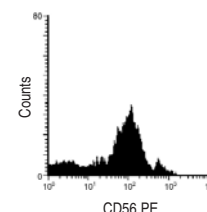
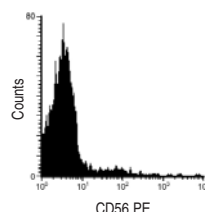
## ASSESSING PURITY:

Purity of NK cells can be measured by flow cytometry after staining with a fluorochrome conjugated antibody against CD56 (e.g. PE anti-CD56, Catalog #10526).

## TYPICAL ROSETTESEP® NK CELL ENRICHMENT PROFILE:

Start: 4% CD56<sup>+</sup> Cells

Enriched: 82% CD56<sup>+</sup> Cells  
63% Recovery of CD56<sup>+</sup> Cells



Results (mean  $\pm$  1 S.D.):  
Purity:  $74 \pm 10\%$  CD56<sup>+</sup> Cells

n=15  
Recovery:  $44 \pm 19\%$  CD56<sup>+</sup> Cells

## COMPONENT DESCRIPTION:

**RosetteSep® Human NK Cell Enrichment Cocktail.** This cocktail contains a combination of mouse and rat monoclonal antibodies purified from mouse ascites fluid or hybridoma culture supernatant, by affinity chromatography using Protein A or Protein G Sepharose. These antibodies are bound in bispecific TAC which are directed against cell surface antigens on human hematopoietic cells (CD3, CD4, CD19, CD36, CD66b) and glycophorin A on red blood cells. The mouse monoclonal antibody subclass is IgG<sub>1</sub>. It should be kept in mind that this product is a biological reagent, and as such cannot be completely characterized or quantified. Some variability is unavoidable.

## STABILITY AND STORAGE:

**RosetteSep® Human NK Cell Enrichment Cocktail.** Stable at 4°C for two years. Do not freeze this product. Contents sterile in unopened tube. This product may be shipped at room temperature, and should be refrigerated upon receipt.

## StemCell Technologies

**In North America**  
Tel: 1.604.877.0713  
Fax: 1.604.877.0704  
NA Toll Free Tel: 1.800.667.0322  
NA Toll Free Fax: 1.800.567.2899  
e-mail: info@stemcell.com  
www.stemcell.com

**In the United Kingdom**  
Tel: +44.(0).20.7537.7565  
Fax: +44.(0).20.7515.5408  
Toll Free within United Kingdom: 0800.731.27.14  
Tel: 0800.731.27.14  
Fax: 0800.731.27.13  
e-mail: info@stemcellgb.com  
www.stemcellgb.com

**In Europe**  
Tel: +33.(0).4.76.04.75.30  
Fax: +33.(0).4.76.18.99.63  
e-mail: info@stemcellfrance.com

Version 1.0  
May 2004

**FOR RESEARCH USE ONLY**

**#28574**

Printed on recycled paper.

Ficoll and Ficoll-Paque are registered trademarks of Pharmacia-Biotech AB.