

Journal of Visualized Experiments

Standardization and Maintenance of 3D Canine Hepatic and Intestinal Organoid Cultures for Use in Biomedical Research

--Manuscript Draft--

Article Type:	Invited Methods Article - JoVE Produced Video
Manuscript Number:	JoVE63515R2
Full Title:	Standardization and Maintenance of 3D Canine Hepatic and Intestinal Organoid Cultures for Use in Biomedical Research
Corresponding Author:	Vojtech Gabriel Iowa State University Veterinary Medical Library: Iowa State University College of Veterinary Medicine Ames, IA UNITED STATES
Corresponding Author's Institution:	Iowa State University Veterinary Medical Library: Iowa State University College of Veterinary Medicine
Corresponding Author E-Mail:	vojt.gabriel@gmail.com
Order of Authors:	Vojtech Gabriel Christopher Zdyrski Dipak Sahoo Kimberly Dao Agnes Bourgois-Mochel Jamie Kopper Xi-Lei Zeng Mary K. Estes Jonathan Mochel Karin Allenspach
Additional Information:	
Question	Response
Please specify the section of the submitted manuscript.	Medicine
Please indicate whether this article will be Standard Access or Open Access.	Open Access (\$3900)
Please indicate the city, state/province, and country where this article will be filmed . Please do not use abbreviations.	Ames, IA, USA
Please confirm that you have read and agree to the terms and conditions of the author license agreement that applies below:	I agree to the Author License Agreement
Please confirm that you have read and agree to the terms and conditions of the video release that applies below:	I agree to the Video Release
Please provide any comments to the journal here.	Karin Allenspach, Jonathan P Mochel and Vojtech Gabriel are corresponding authors.

TITLE:

Standardization and Maintenance of 3D Canine Hepatic and Intestinal Organoid Cultures for Use in Biomedical Research

AUTHORS AND AFFILIATIONS:

Vojtech Gabriel¹, Christopher Zdyrski¹, Dipak K. Sahoo², Kimberly Dao³, Agnes Bourgois-Mochel², Jamie Kopper², Xi-Lei Zeng⁴, Mary K. Estes⁴, Jonathan P. Mochel^{1,3}, Karin Allenspach^{2,3}

¹Department of Biomedical Sciences, College of Veterinary Medicine, Iowa State University, Ames, IA, United States

²Department of Veterinary Clinical Sciences, College of Veterinary Medicine, Iowa State University, Ames, IA, United States

³3D Health Solutions Inc., Ames, IA, United States

⁴Department of Molecular Virology and Microbiology, Baylor College of Medicine, Houston, TX, United States

Corresponding Authors:

Vojtech Gabriel (vojtgabriel@gmail.com)

Jonathan P. Mochel (jmochel@iastate.edu)

Karin Allenspach (allek@iastate.edu)

Email addresses of co-authors:

Vojtech Gabriel (vojtgabriel@gmail.com)

Christopher Zdyrski (czdyrski@iastate.edu)

Dipak K. Sahoo (dipaksahoo11@gmail.com)

Kimberly Dao (kim.dao@3dhealth.solutions)

Agnes Bourgois-Mochel (abmochel@iastate.edu)

Jamie Kopper (jkopper@iastate.edu)

Xi-Lei Zeng (xzeng@bcm.edu)

Mary K. Estes (mestes@bcm.edu)

Jonathan P. Mochel (jmochel@iastate.edu)

Karin Allenspach (allek@iastate.edu)

KEYWORDS:

Organoid, dog, canine, stem cell, liver, intestine, One Health, standardization

SUMMARY:

Experimental methods to harvest adult stem cells from canine intestinal and hepatic tissues to establish 3D organoid cultures are described. Furthermore, the laboratory techniques to ensure consistent growth and provide standard operating procedures to harvest, biobank, and revive canine intestinal and hepatic organoid cultures are discussed.

ABSTRACT:

Dogs develop complex multifactorial diseases analogous to humans, including inflammatory

diseases, metabolic diseases, and cancer. Therefore, they represent relevant large animal models with the translational potential to human medicine. Organoids are 3-dimensional (3D), self-assembled structures derived from stem cells that mimic the microanatomy and physiology of their organ of origin. These translational *in vitro* models can be used for drug permeability and discovery applications, toxicology assessment, and to provide a mechanistic understanding of the pathophysiology of multifactorial chronic diseases. Furthermore, canine organoids can enhance the lives of companion dogs, providing input in various areas of veterinary research and facilitating personalized treatment applications in veterinary medicine. A small group of donors can create a biobank of organoid samples, reducing the need for continuous tissue harvesting, as organoid cell lines can be sub-cultured indefinitely. Herein, three protocols that focus on the culture of intestinal and hepatic canine organoids derived from adult stem cells are presented. The Canine Organoid Isolation Protocol outlines methods to process tissue and embedding of the cell isolate in a supportive matrix (solubilized extracellular membrane matrix). The Canine Organoid Maintenance Protocol describes organoid growth and maintenance, including cleaning and passaging along with appropriate timing for expansion. The Organoid Harvesting and Biobanking Protocol describes ways to extract, freeze, and preserve organoids for further analysis.

INTRODUCTION:

Rodents are the most commonly utilized animal model for biomedical and translational research¹. They are exceptionally useful for investigating basic molecular pathogenesis of the diseases, although their clinical relevance for chronic multifactorial diseases has recently been questioned². The canine model exhibits several advantages in comparison to rodents^{3,4}. Dogs and humans share similarities in metabolomics and intestinal microbiome that developed due to consumption of human diet throughout various periods of their domestication⁵⁻⁷. Similarities between canine and human gastrointestinal anatomy and physiology is another of the examples⁸.

Additionally, dogs often share similar environments and lifestyles with their owners⁹. The longer lifespan of dogs in comparison to rodents allows for the natural development of numerous chronic conditions¹⁰. Inflammatory bowel disease or metabolic syndrome are examples of multifactorial chronic diseases that share important similarities between humans and dogs^{11,12}. Canine preclinical trials that involve dogs with naturally occurring diseases can generate more reliable data than those gained from rodent models¹³. However, to minimize the use of live animal research and comply with the principles of the 3Rs (Reduce, Refine, Replace)¹⁴, alternatives to *in vivo* testing using 3D *in vitro* canine organoids have emerged¹⁵.

Organoids are self-assembled 3D stem cell-derived structures that recapitulate the physiology and microanatomy of their original organs^{16,17}. This technology was first described by Sato et al. in 2009¹⁷ and allowed for more translatable *in vitro* studies in epithelial cell lines than were previously possible using 2D cancer cell cultures¹⁸⁻²⁰. Organoids are useful *in vitro* models in many biomedical disciplines such as in preclinical toxicological²¹⁻²³, absorption²⁴⁻²⁸, or metabolism studies, as well as in personalized medical approaches²⁹⁻³¹. The successful culture of canine intestinal organoids has been described for the first time in 2019¹², while hepatic organoids derived from a dog were first reported by Nantasanti et al. in 2015³². Canine organoids have since

89 been successfully used in studies investigating canine chronic enteropathies, gastrointestinal
90 stromal tumors, colorectal adenocarcinoma¹², and Wilson's Disease^{33,34}.

91
92 While adult stem cells can be harvested *via* necropsies, the organoid technology does not always
93 require sacrificing of the animals. Endoscopic and laparoscopic biopsies, or even fine-needle
94 aspirates of organs³⁵, are a viable source of adult stem cells for epithelial organoid isolation¹².
95 Widespread use of such non-invasive techniques in veterinary practice facilitates options for
96 reverse translational research (translation of information from veterinary clinical practice to
97 human clinical practice and vice versa)¹⁵. Further advancement of organoid technology can be
98 ensured by the standardization of organoid culture and maintenance methods. The organoid
99 protocol presented here is partially based on previously published work of Saxena et al. from
100 2015³⁶, and methods were adapted to fit specifics of canine intestinal and hepatic organoid
101 culture. The overall workflow of the canine organoid protocols is depicted in **Figure 1**.

102
103 Canine Organoid Isolation Protocol introduces methods of obtaining samples from endoscopic,
104 laparoscopic, and surgical biopsies, as well as necropsies. It outlines the initial pre-treatment of
105 tissue samples and methodologies used for transport to the laboratory. Materials and reagents
106 needed for organoid isolation are summarized in the 'Preparation for Isolation' section. The
107 process of adult stem cell isolation from tissue samples is further described in detail. Finally, the
108 process of plating organoids into dome-like structures using a solubilized extracellular membrane
109 matrix is discussed.

110
111 The second protocol, Canine Organoid Maintenance Protocol, describes methods of
112 documenting and culturing organoids. Media changes and their frequency are discussed in this
113 section. Furthermore, the laboratory procedures such as passaging and cleaning the cell cultures,
114 which are essential to ensure the successful maintenance of 3D canine organoids, are described.
115 Appropriate passaging is a critical step of the protocol, and possible adjustments and
116 troubleshooting of this step are discussed further in the manuscript.

117
118 The last protocol is Canine Organoid Harvesting and Biobanking Protocol containing methods for
119 preparing full-grown organoids for paraffin-embedding and RNA preservation. Methods of
120 biobanking organoid samples in liquid nitrogen storage are also described here. Finally, the ways
121 to thaw frozen samples and support their growth are discussed.

122
123 In conclusion, this article aims to provide consistent canine organoid culture procedures through
124 the standardization of inter-laboratory protocols. In doing so, the manuscript aims to facilitate
125 the reproducibility of data derived from canine organoid models to increase their relevance in
126 translational biomedical research.

127
128 **[Insert Figure 1 here]**

129 130 **PROTOCOLS:**

131 The research was approved and performed in compliance with the Institutional Animal Care and
132 Use Committee of Iowa State University (IACUC-19-337; IACUC-18-065; IACUC-19-017).

NOTE: The following section (steps 1–3) describes the Canine Organoid Isolation Protocol.

1. Preparation for isolation

1.1. Transport tubes: Before organoid isolation (typically 24 h prior), fill a 50 mL conical tube with 10 mL of Dulbecco's Modified Eagle Medium/Nutrient Mixture F-12 (Advanced DMEM/F12) enriched with 0.2 mL of Pen Strep.

1.2. For laparoscopic, incisional, or excisional biopsies, prepare three additional 50 mL conical tubes. Fill these tubes with 10 mL of complete chelating solution (1x CCS; see **Table 1**).

NOTE: For step 1.2, 2 mM N-Acetylcysteine (NAC) in Phosphate Buffered Saline (PBS) can also be used as a traditional solution used for stem cell harvesting. There were no differences observed when using 1x CCS or NAC in PBS. Both solutions are added to release cells in the solution.

1.3. Keep the tubes at 4 °C overnight and transport the tubes on ice for the remainder of the protocol.

1.4. Prepare five 15 mL centrifuge tubes with 5 mL of 1x CCS, one 15 mL centrifuge tube with 3 mL of 1x CCS, one empty 15 mL centrifuge tube (supernatant tube), and one 15 mL centrifuge tube with 5 mL of 1x CCS and 2 mL of fetal bovine serum (FBS).

NOTE: The above can be prepared prior to the day of isolation if multiple samples will be processed. For illustration, see the isolation tube layout in **Figure 2**.

1.5. On the day of isolation, prepare a Petri dish, scalpel, ice bucket, and cold Advanced DMEM/F12 in the biosafety cabinet. Place the required number of 24-well cell culture plates in the incubator (37 °C; 5% CO₂ atmosphere) to pre-warm.

1.6. Place solubilized extracellular membrane matrix (ECM; see **Table of Materials**) on ice to begin thawing.

NOTE: Submersion in ice protects against rapid thawing and helps avoid solidification. A box of pipette tips can be placed in the freezer to assist in plating the solubilized ECM.

1.7. Prechill a centrifuge to 4 °C.

1.8. Move Complete media with growth factors “CMGF+” or “organoid media” (see **Table 1** for composition) from the freezer/refrigerator to a 37 °C water bath. Avoid direct light exposure when possible.

[Insert Figure 2 here]

2. Tissue harvesting

2.1. Intestinal endoscopic, and laparoscopic biopsies (diameter 2.8 mm) can be acquired using large biopsy forceps. Harvest at least eight endoscopic samples per intestinal site.

2.2. Collect samples directly into transport tubes and place them on ice.

2.3. For surgical biopsies and necropsies, harvest tissue pieces with a size of 0.5 cm x 0.5 cm and place them in the first 1x CCS tube.

NOTE: For intestinal biopsies, remove any remaining intestinal content and scrape the mucosal layer with a scalpel to remove villi. If samples are plentiful, additional biopsies can be collected in cryovials containing RNA storage reagent (1 mL) or paraffin-embedded for future comparison between organoids and their tissue of origin. In the case of taking biopsies for TEM analysis, do not scrape the villi and store sample in preservative (3% paraformaldehyde and 3% glutaraldehyde in phosphate-buffered saline (PBS)) and store at 4 °C.

2.4. Shake the 1x CCS tube vigorously for ~30 s, and then transfer the sample to a new 1x CCS tube using forceps. Repeat this process twice.

2.5. Transfer the sample from the last 1x CCS tube to the transport tube (Advanced DMEM/F12 + Pen Strep) and bring the sample back to the laboratory.

NOTE: Samples pre-treated this way can also be shipped overnight on ice (do not ship on dry ice).

3. Organoid isolation

NOTE: Perform isolation using aseptic techniques in a biosafety cabinet. See **Figure 3** for canine organoid isolation workflow.

3.1. Shake tissue sample in the transport tube for ~30 s and remove excessive supernatant until there is 0.5 mL left in the tube by slow pipetting near the fluid surface. Be sure not to discard any tissue.

3.2. Transfer tissue and remaining supernatant to a sterile Petri dish. Using a disposable scalpel (or sterilized forceps and scissors), cut and mince the tissue into smaller pieces (size of 1 mm²) resembling a mash consistency for approximately 5 min.

3.3. Pipet the minced tissue with liquid from the Petri dish to the first CCS tube. Add 2 mL of Advanced DMEM/F12 to the Petri dish, flush the remaining tissue, and transfer to the first CCS tube.

219 3.4. Vortex the 1x CCS tube for 5 s approximately five times. Allow biopsies to settle to the bottom
220 of the 15 mL tube (approximately 1 min) and remove the supernatant until there is 5 mL left in
221 the tube. Transfer the 1x CCS from the new tube to the sample tube.

222
223 3.5. Repeat the previous step for the next two tubes. On the final two washes, remove the
224 supernatant down to 3 mL remaining in the tube.

225
226 3.6. Transfer the biopsies and 1x CCS from the sample tube to one well of a 6-well plate. Then,
227 add 3 mL of 1x CCS to the sample tube, gently swirl to collect any remaining tissue, and transfer
228 to the same well of the plate.

229
230 3.7. Add 150 μ L of 0.5 M EDTA (to achieve a total volume of 6.15 mL in a well). Place the 6-well
231 plate on a 20°, 24-rpm nutating mixer/rocker at 4 °C. Incubate the liver samples for 10 min and
232 the intestinal samples for 1 h on the moving rocker.

233
234 3.8. Transport the 6-well plate back to the biosafety cabinet. Transfer minced tissue and liquid to
235 a 1x CCS/FBS tube and allow the tissues to settle. Transport the supernatant (this portion now
236 includes free stem cells) and approximately 0.2 mL of the upper portion of the tissue to the empty
237 tube.

238
239 3.9. Spin down the tube containing the sample (700 x *g* for 5 min at 4 °C). Stem cells are now
240 pelleted along with the minced tissue. Remove and discard the supernatant carefully to not
241 disturb the pellet.

242
243 3.10. Resuspend the pellet in Advanced DMEM/F12 and spin the tube again (700 x *g* for 5 min at
244 4 °C). Aspirate the supernatant and do not disturb the pellet.

245
246 3.11. Calculate the volume of solubilized ECM needed for seeding the dissociated cells and tissue.
247 Use 30 μ L of solubilized ECM per well of a 24-well plate to achieve proper seeding density. Embed
248 a sample post isolation in 4 to 6 wells of a 24-well plate (i.e., based on the amount of minced
249 tissue in the sample).

250
251 3.11.1 Add the calculated volume of solubilized ECM to the sample tube and slowly pipette up
252 and down to avoid the formation of bubbles. Seed the suspension in the middle of the wells so
253 that the solubilized ECM can form a dome-like structure.

254
255 NOTE: Using pipette tips from a -20 °C freezer assists in plating solubilized ECM. If tissue chunks
256 are larger than the P200 pipette tip, use wide cold tips or cut cold P1000 tips to assist in plating.
257 Keep the sample with the solubilized ECM on ice whenever possible.

258
259 3.12. Transport the plate to an incubator (37 °C; 5% CO₂ atmosphere) and allow the solubilized
260 ECM to solidify for ~30 min.

261

3.13. Mix ROCK inhibitor and GSK3 β in CMGF+ (concentrations in **Table 1**). Add 500 μ L of this solution (CMGF+ R/G) to every well. Place the plate in the incubator (37 °C; 5% CO₂ atmosphere).

[Insert Figure 3 here]

NOTE: The following section (steps 4 and 5) describes the Canine Organoid Maintenance Protocol. Change media according to **Table 2** and check the organoids daily for signs of apoptosis, contamination, overcrowding, and detachment of solubilized ECM. Daily notes must be taken according to **Figure 4** to accurately monitor conditions and experimental effects on the cultures. See **Supplementary Table 1** for a template allowing for accurate and reproducible organoid culture-related notetaking. For hepatic organoids, use CMGF+ enhanced with ROCK inhibitor and GSK3 β .

[Insert Figure 4 here]

[Insert Table 2 here]

4. Organoid cleaning

NOTE: Organoid cleaning or passaging must be performed regularly to upkeep the health of the organoid culture. Perform the cleaning procedure whenever apoptosis in the culture, presence of debris, overcrowding of the organoids, or detachment of solubilized ECM is noticed. Refer to **Figure 4D**.

4.1. Remove the media from the wells while tilting the plate to avoid destruction of the solubilized ECM.

NOTE: If solubilized ECM detachment is considerable, it is advised to transfer the media to the 15 mL tube to avoid losing fragments of solubilized ECM containing the sample.

4.2. Add 0.5 mL of prechilled Advanced DMEM/F12 to each well to dissolve the matrix domes by repeated pipetting using a P1000 tip (avoid creating excessive bubbles). Transfer the organoid-containing dissolved matrix to a 15 mL centrifuge tube. Keep the tube on ice and if the volume is lower than 6 mL, slowly fill the tube with Advanced DMEM/F12 to reach a total volume of 6 mL.

4.3. Spin the tube (700 x *g* for 5 min at 4 °C) and remove all the supernatant while making sure not to disturb the pellet.

4.4. Add the required volume of solubilized ECM (30 μ L per well to achieve proper seeding density) and slowly resuspend the pellet by pipette mixing. Plate the suspension in the middle of the 24-well plate to form a dome.

4.5. Place the plate in an incubator (37 °C; 5% CO₂ atmosphere) for ~30 min, and then add the appropriate volume of media (**Table 2**).

5. Organoid passaging

NOTE: Passaging is typically performed 5–7 days after initial culture to expand the organoid cell line. Organoid cultures can typically be expanded in a 1:3 ratio. Images of healthy cultures ready for passage can be seen in **Figure 4**. Organoids have to be at least medium in size.

5.1. Perform steps 4.1 to 4.3.

5.2. Remove the supernatant leaving 0.5 mL in the tube. Make sure not to disturb the pellet.

5.3. Add 0.5 mL of trypsin-like protease (see **Table of Materials**), mix properly by aspirating with a pipette and incubate in the 37 °C water bath (incubate intestinal organoids for 8 min or hepatic organoids for 10 min). Continue to mix the solution by flicking the tube several times at the half-time point of the incubation.

5.4. Move the tube containing the sample back to a biosafety cabinet and slowly add 6 mL of prechilled Advanced DMEM/F12 to inactivate trypsin-like protease and stop the dissociation of the cells.

5.5. Spin the tube (700 x *g* for 5 min at 4 °C) and remove the supernatant. Make sure not to disturb the pellet.

5.6. Perform steps 4.4. and 4.5.

NOTE: The following section (steps 6–9) describes Organoid Harvesting and Biobanking Protocol. Organoid cultures have to be free of tissue that has been removed during previous passages. Cultures should also be healthy, at least large in size, and medium to high in density. Images of healthy cultures ready for downstream applications can be seen in **Figure 4**. Moving downstream with preservation and harvesting of sub-optimal organoid cultures can negatively impact characterization results and the biobank's viability. Review the recommended 24-well plate layout in **Figure 5**.

[Insert Figure 5 here]

6. Fixation of organoids

6.1. Remove media from the well and make sure not to disturb the solubilized ECM dome.

6.2. Add 500 µL of Formalin-Acetic Acid-Alcohol solution serving as a fixative (FAA; composition in **Table 1**).

6.3. Store organoids at room temperature. After 24 h, aspirate FAA and fill the well with 70% ethanol. Wrap plates with a laboratory flexible film tape (see **Table of Materials**) to avoid rapid

evaporation. The organoids are now ready for paraffin-embedding. The paraffin-embedding of the organoid culture is performed in traditional metal base molds.

7. RNA preservation

7.1. Remove media from the wells and make sure not to disturb the solubilized ECM dome.

7.2. Use 0.5 mL of prechilled Advanced DMEM/F12 per well to dissolve solubilized ECM domes by repeatedly pipetting up and down (avoid creating excessive bubbles). Transfer the organoids to a 15 mL centrifuge tube. Keep the tube on ice and if the volume is lower than 6 mL, slowly fill the tube with Advanced DMEM/F12 to reach 6 mL of total volume.

7.3. Spin the tube ($700 \times g$ for 5 min at 4 °C) and remove all the supernatant. Make sure not to disturb the pellet.

7.4. Add 100 μ L of PBS to the sample tube and resuspend the pellet by gentle pipetting. Transfer the contents of the sample tube to a cryovial.

7.5. Add 900 μ L of RNA storage reagent (see **Table of Materials**) to the sample tube and mix to collect any remaining organoids. Transfer these residual organoids to the cryovial and store them at -80 °C (typically four wells pooled to one cryovial will be sufficient for downstream applications, including qPCR and RNA sequencing).

NOTE: One cryovial typically produces a total of 4,000 ng of RNA (measured *via* spectrophotometer analysis).

8. Organoid biobanking

NOTE: Biobanking usually occurs 3–4 days after passage. The signs of apoptosis should not be present in the culture to perform this method. Refer to **Figure 4** for referencing size and density appropriate for freezing. Biobank medium to extra-large organoids at medium to very high densities. An emergency freeze step can be followed if an organoid cell line is especially rare or further viability is not guaranteed. Follow the same steps for normal organoid biobanking (steps 8.1 to 8.4). Emergency freezing is done with smaller and less dense cultures. Pool as many wells of growing organoids into one cryovial following steps 8.1 to 8.4. Keep in mind that a sufficient number of organoids must be kept alive in an attempt to expand the culture (emergency freezing is simply a backup procedure to protect against possible loss of culture *via* contamination or other unexpected occurrences).

8.1. Follow steps 7.1 to 7.3.

8.2. Add 1 mL of freezing media per cryovial (composition in **Table 1**) to the sample tube and gently resuspend the pellet by pipetting up and down.

8.3. Transfer 1 mL of the solution to one cryovial (ratio of two wells/cryovial) and keep the cryovials on ice.

8.4. Transfer the cryovials from ice to a freezing container (regularly refill the reservoir with isopropanol) and immediately transfer to -80 °C. Move the samples to liquid nitrogen (-196 °C) for long-term storage after 24 h.

NOTE: An alcohol-free cell freezing container can also be used instead of a traditional one. Make sure the samples do not thaw during transport from the -80 °C to the long-term liquid nitrogen storage. Repeated thawing decreases the viability of the cell culture.

9. Revival from liquid nitrogen storage

NOTE: When choosing to thaw an organoid line, a subset of the revived organoids must be refrozen and replaced in the biobank as quickly as possible with at least one (preferably more) cryovials.

9.1. Place solubilized ECM on ice to slowly thaw, put a 24-well plate in the incubator (37 °C; 5% CO₂ atmosphere), and prepare the required reagents such as a 15 mL tube and Advanced DMEM/F12.

9.2. Recover a cryovial containing an organoid sample from liquid nitrogen storage and immediately transfer it to a heat bath (37 °C) for 2 min.

9.3. Transfer contents of the cryovial to a 15 mL centrifuge tube in a biosafety cabinet. Slowly add prechilled Advanced DMEM/F12 to reach a total volume of 6 mL.

9.4. Spin the tube (700 x *g* for 5 min at 4 °C). Remove the supernatant and make sure not to disturb the pellet.

9.5. Add 180 µL (30 µL per well) of solubilized ECM to the pellet and plate this suspension in the pre-heated 24-well plate. One cryovial can be plated to six wells of a 24-well plate.

9.6. Place the 24-well plate in the incubator (37 °C; 5% CO₂ atmosphere) for ~30 min and add CMGF+ R/G (for intestinal organoids, switch to CMGF+ in 24 to 48 h).

NOTE: When a sample is plated and growing in the 24-well plate, it must be allowed to recover for at least 2 days before passaging to increase viability.

REPRESENTATIVE RESULTS:

The canine organoid protocol typically generates ~50,000 to ~150,000 intestinal or hepatic cells per well of a 24-well plate. Representative organoids can be seen in **Figure 6**.

[Insert Figure 6]

Enteroids and colonoids derived using this protocol were characterized previously by Chandra et al. in 2019¹². Canine intestinal organoids are composed of a regular cellular population of the intestinal epithelium. Using RNA *in situ* hybridization, the expression of stem cell biomarkers (Leucine-Rich Repeat Containing G Protein-Coupled Receptor 5 - LGR5 and SRY-Box Transcription Factor 9 - SOX9), Paneth Cell Biomarker (Ephrin type-B receptor 2 - EPHB2), absorptive epithelial cell markers (Alkaline phosphatase - ALP) and enteroendocrine marker (Neurogenin-3 - Neuro G3)¹² was confirmed. Alcian Blue staining was performed on paraffin-embedded slides to confirm the presence of Goblet cells. Additionally, functional assays such as optical metabolic imaging (OMI) or cystic fibrosis transmembrane conductance regulator (CFTR) swelling assay were performed to confirm the metabolic activity of the organoids. Canine organoids from dogs diagnosed with inflammatory bowel disease, gastrointestinal stromal tumors (GIST), or colorectal adenocarcinoma were also isolated using this protocol¹².

After stem cell isolation, hepatic canine organoids start their life cycle as expanding spheroids, and after ~7 days, they turn into budding and differentiating organoids. Canine hepatic spheroids isolated and cultured according to this protocol were measured to quantify their growth and determine the ideal time for passage. Spheroids derived from laparoscopic hepatic biopsies of healthy adult dogs (n = 7) were measured during their first 7 days of culture. Representative images were taken, and the longitudinal (a) and diagonal (b) radius of the spheroids (n = 845) was measured throughout the culture. The volume (V), surface area (P), 2D ellipse area (A), and circumference (C) of the spheroids were calculated. The calculations and results of the experiment are summarized in **Figure 7**. 2D ellipse area and circumference were used to assess the organoid culture's health using light microscopy. These values can serve as a guide for culture maintenance decisions.

Briefly, spheroids rapidly expanded in volume, surface area, 2D ellipse area, and circumference. The measurement data from the seven beagles was averaged for the following calculations. The volume increased by 479% ($\pm 6\%$) from day 2 to 3. At the same timepoint, spheroid surface area and 2D ellipse area increased by 211% ($\pm 208\%$) and 209% ($\pm 198\%$), respectively. 2D ellipse circumference increased from day 2 to 3 by 73% ($\pm 57\%$). The increase in the overall volume of hepatic organoids from days 2–7 was more than 365 times, surface area and 2D ellipse area increased 49 times, and 2D ellipse circumference increased six times.

Next, spheroids derived from two adult canine samples were further grown post passage and collected every day (day 2–7) for RNA *in situ* hybridization (RNA ISH). Canine probes were designed (probe list is provided as **Supplementary Table 2**), and mRNA expression was evaluated for stem cell markers (LGR5), markers specific for cholangiocytes (cytokeratin 7 - KRT-7, and aquaporin 1 – AQP1), as well as hepatocyte markers (forkhead box protein A1 - FOXA1; and cytochrome P450 3A12 - CYP3A12). The expression of the markers was assessed in a semi-quantitative manner (representative pictures in **Figure 8**). Spheroids preferentially expressed the cholangiocyte marker KRT-7 ranging from 1% to 26% in signal area/total area of cells. AQP1 was not expressed in the organoid samples, arguably because its presence in canine hepatic samples is sparse. The stem cell marker expression (LGR5) ranged between 0.17% to 0.78%, while

hepatocyte markers were expressed to a lower extent at 0.05%–0.34% for FOXA1 and 0.03%–0.28% for CYP3A12.

[Insert Figure 7 here]

Organoids would rarely not break up during the passaging process following this standardized technique. If dissociation does not occur, passage times can be adjusted to achieve optimal cell cluster disintegration. However, prolonged exposure to trypsin-like protease can negatively impact the growth of the organoids. Hepatic organoids were used in a subsequent experiment to investigate the optimal dissociation time and establish a proper passaging method. Briefly, hepatic organoids from two healthy dogs (6 well replicates each) were passaged with trypsin-like protease for 12 min and 24 min. Samples were agitated every 6 min. At the end of the dissociation timepoint, 6 mL of ice-cold Advanced DMEM/F12 was added to the solution, and samples were spun (700 x *g* for 5 min at 4 °C). The supernatant (Advanced DMEM/F12 with diluted trypsin-like protease) was removed, and the pellets were embedded in solubilized ECM as described above (steps 4.4–4.5). After 12 h of culture in solubilized ECM and CMGF+ R/G, differences were observed in both samples. A 12 min incubation with trypsin-like protease did not inhibit organoid growth. However, the growth of organoids was negatively impacted (see **Figure 9**) using a 24 min incubation.

[Insert Figure 9 here]

Next, the investigation into the survivability of canine hepatic organoids derived from this protocol in an unfavorable environment (deprivation of structural support and nutrition) was performed. The investigation focused on determining the volume of organoid media and basement matrix needed for hepatic organoid's successful growth and survival and also establishing such conditions' influence on the organoid culture. Survivability was measured in a 96-well plate with a limited number of organoids. Organoids from two dogs were passaged as described above and embedded (12 replicates) in different volumes of solubilized ECM (10 µL or 15 µL). The cells were plated in a concentration of 400 cells/10 µL well and 600 cells/15 µL well corresponding to 40,000 cells/mL. Two media types (CMGF+, or CMGF+ R/G) were added in different volumes (25 µL, 30 µL, or 35 µL). The media was never changed, and no maintenance procedures were performed. The survivability of the organoids was monitored every day. Organoid death was defined as the dissolution of more than 50% of organoid structures. The survival rate of organoids in these conditions ranged from 12.9 (±2.3) days to 18 (±1.5) days, and the results are summarized in **Table 3**. The two samples that survived the longest were organoids derived from dogs embedded in 15 µL of solubilized ECM and 30 µL of CMGF+ media. Both samples were embedded in solubilized ECM (30 µL) and fresh media (500 µL) in a standard 24-well plate after 18 days of deprivation to ensure organoid expansion was still possible (**Figure 10**).

[Insert Table 3 here]

[Insert Figure 10 here]

FIGURE AND TABLE LEGENDS:

Figure 1: Workflow of canine organoid protocols. The Canine Organoid Isolation Protocol describes the preparation of the materials needed for organoid isolation, the harvesting of a tissue sample (through the means of necropsies, endoscopic, laparoscopic, and surgical biopsies), and guidance on cell dissociation and plating of the cellular population. The Canine Organoid Maintenance Protocol discusses cleaning and passaging of the organoid culture. The Organoid Harvesting and Biobanking Protocol discusses the preparation of organoid samples for paraffin-embedding and further organoid characterization. Methods to biobank organoid cultures and reviving them from storage in liquid nitrogen are also discussed.

Figure 2: Isolation tube layout. Recommended setup for tissue harvesting includes 10 mL of Advanced DMEM/F12 and 0.2 mL of Pen Strep in a 50 mL centrifuge tube. Additionally, three 50 mL tubes filled with 10 mL of 1x CCS are required for surgical biopsies or necropsies. Recommended tube layout for isolation steps includes five tubes containing 5 mL of 1x CCS to be used during CCS wash steps. The first tube is used as a sample tube containing the minced tissue, and the remaining tubes serve as reservoirs of 1x CCS to be added to the first tube. The sixth tube contains 3 mL of 1x CCS for flushing the remaining tissue from the sample tube when transferring to a 6-well plate. These six tubes will be used before the EDTA incubation step. A tube with 5 mL of 1x CCS and 2 mL of FBS serves as a sample tube after EDTA incubation, and supernatant from this tube is transferred with stem cells into an empty tube for the rest of the isolation. Keep tubes at 4 °C before beginning isolation.

Figure 3: Canine organoid isolation workflow. The harvested tissue sample is transferred to a Petri dish and minced properly. The sample is then transferred to a 1x CCS tube, and wash steps are performed. For the EDTA incubation in a 6-well plate, the sample is then transferred to a tube containing 1x CCS and FBS. After the tissue settles, the supernatant with a small amount of tissue is transferred to an empty tube. The sample is consequently spun, the supernatant is removed, and the pellet is resuspended in Advanced DMEM/F12. The tube is spun again, and the supernatant is aspirated and discarded. Solubilized ECM is added to the tube, mixed, and the sample is plated in a 24-well plate. The plate is consequently incubated (37 °C; 5% CO₂ atmosphere) for 30 min, and media is then added.

Figure 4: Organoid sizing and density guide. (A) Organoid size chart for accurate tracking of organoid growth. The Sizing Guide includes extra-small (XS), small (S), medium (M), large (L), and extra-large (XL) categories. (B) The Density Guide consists of very low density (VLD), low density (LD), medium density (MD), high density (HD), and very high density categories (VHD). (C) Representative images of bacterial and fungal contamination of the organoid sample. (D) Representative images of organoid overcrowding and apoptosis. The objective magnification is indicated in every panel.

Figure 5: Recommended 24-well plate layout. The recommended layout of the 24-well plate for basic characterization after expansion of the organoid culture. Paraffin-embedding of six wells (medium to large organoids of medium to high density) will typically allow for a high

concentration of organoids in a histology block. Four wells of organoids can be pooled to one cryovial with RNA storage reagent for downstream applications. Fourteen wells are used for biobanking the organoid samples and provide material for up to seven cryopreserved vials.

Figure 6: Representative images of canine organoids. Images of organoids isolated using this protocol are depicted. (A,B) Intestinal organoids derived from the duodenum (taken at 10x and 5x objective magnification). Note the presence of older budded organoids and younger spheroids. (C,D) Canine enteroids from the lower portion of the jejunum (taken at 10x and 20x objective magnification). (E,F) Ileal enteroids (taken at 20x and 5x objective magnification), and (G,H) colonoids (taken at 10x objective magnification). (I) A representative image of hepatic organoids taken at 20x objective magnification. Most of the organoids are in their budding form. Younger hepatic spheroids can also be seen in the picture. (J) Representative image showing a rare hepatic organoid that forms a duct-like structure (taken at 10x objective magnification). Scale bar (500 μ m) is present at the top-left corner of each image.

Figure 7: Hepatic spheroid measurements. (A) Hepatic spheroid growth was observed every day of cultures from day 2–7. Spheroids first formed on day 2, and the last spheroids started the budding process on day 7. A subsequent experiment used two canine organoid lines after passage to harvest spheroids every day for paraffin-embedding to perform RNA ISH (day 2 image was taken at 40x, day 6 image at 10x, and the rest of the images were taken at 20x magnification). (B) A hepatic spheroid cluster is shown attached to a tissue chunk embedded in solubilized ECM 4 days after isolation. Longitudinal and diagonal radii of the spheroids were measured (image taken at 10x). Panel (C) depicts the formula used for calculations to derive volume (V), surface area (P), 2D ellipse area (A), and circumference (C). For these calculations, it was presumed that canine hepatic spheroids are ideal spheroids. Results of measurements of hepatic spheroids' volume, surface area, 2D ellipse area, and 2D ellipse circumference for individual days of growth are depicted in panel (D). Error bars represent the standard error of the mean (SEM). (E) mRNA expression of KRT-7, LGR5, FOXA1, and CYP3A12 were measured in samples of canine hepatic spheroids after passage of day 2 to day 7. AQP1 was not expressed in these samples. A scale bar (5x: 500 μ m; 10x: 200 μ m; 20x: 100 μ m; 40x: 50 μ m) is present at the top left of each image. Objective magnification noted.

Figure 8: Hepatic spheroids RNA *in situ* hybridization representative images. Representative images of LGR5, KRT7, FOXA1, and CYP3A12 markers were taken at 60x objective magnification of samples from day 2–7 post passage. Day 2 image of the LGR5 marker has been taken at 40x objective magnification. Positive mRNA molecules stain red. AQP1 was not expressed in the samples.

Figure 9: Canine hepatic organoid passage experiment. Representative images of organoids derived from two dogs (D_1 and D_2) passaged using the trypsin-like protease incubation method for 12 min or 24 min. Control samples were passaged with trypsin-like protease for 10 min. A scale bar (μ m) is present at the top left of each image and represents 500 μ m (5x objective magnification).

Figure 10: Organoids nutritional and structural deprivation. Organoids were replated in 24-well plates to confirm the ability for expansion post-deprivation (**A**). Representative images from day 4 and day 7 after the replating show the expansion of the organoids, confirming the ability to identify viable organoids visually (images are taken at 5x objective magnification). Representative images of organoids considered alive, or dead are seen in (**B**). Images are taken at 5x objective magnification.

Table 1: Composition of solutions and media. A list of components and concentrations of incomplete and complete chelating solutions, CMGF+ (organoid media), freezing media, and FAA.

Table 2: Media change recommendation. A recommended timeline of weekly media change. Media (500 μ L of CMGF+ for intestinal organoids, or 500 μ L of CMGF+ R/G for hepatic organoids) is recommended to be changed every other day. To account for the extra hours on a weekend, 750 μ L of media is added on Friday afternoons, with media being refreshed on Monday mornings.

Table 3: Survivability experiment results. The experiment was based on deprivation of structural support or nutrition of two organoid cultures. The results include the mean, median, and standard deviation (CV%) of individual concentrations of solubilized ECM and media in individual dogs.

Supplementary Table 1: Organoid care template. This template allows for accurate and reproducible organoid notetaking for each day.

Supplementary Table 2: RNA *in situ* hybridization probes. List of probes specifically designed for canine mRNA targets by a manufacturer of the technology to perform RNA *in situ* hybridization technique. Information on the significance of individual markers, the name of a probe, its reference number, and target region are listed.

DISCUSSION:

There is currently a lack of standardized protocols available for the isolation and maintenance of canine hepatic and intestinal organoids. Establishing standard operating procedures for organoid cultures is warranted for this model to be applicable in different laboratory settings. Specifically, providing standardized operating protocols for the culture of these canine organoid models is key to characterizing organoids' normal growth during culture and passaging to derive optimal timepoints for expansion and maintenance. Canine intestinal organoids cultured using the protocol have been previously characterized by Chandra et al.¹².

One of the most critical steps of the protocol is the passaging of organoids. The optimal time for the first passage of hepatic spheroids was determined to be on day 7 after isolation based on the hepatic spheroid measurements. The maximum volume of spheroids was achieved by day 7, and at the same time, spheroids began to bud and formed hepatic organoids. The increase in overall organoid volume from day 2–7 after isolation was more than 365 times, suggesting the optimal passage time is longer than the canine intestinal organoid culture. After 7 days in culture, no gross signs of cellular apoptosis in the hepatic spheroid were observed, even without cleaning or

passaging (**Figure 7**). Passaging the intestinal and hepatic organoids can be challenging as the procedure can lead to the loss of cells and altered viability. The results indicate that prolonged incubation of hepatic organoids with trypsin-like protease (up to 12 min) does not negatively influence the subculture. Incubating the organoids in trypsin-like protease for longer than 24 min can be detrimental to the subsequent subculture of the organoids.

In case of suboptimal breakage in the cell clusters with the organoid passage, mechanical dissociation instead of prolonged incubation with trypsin-like protease might be more beneficial. If problems are encountered with proper dissociation of the organoids, brief vortexing of the samples may be attempted to enhance the passage yield. On the other hand, vortexing has the potential to ruin a culture and damage cells, so it should only be used when other procedures have failed repeatedly. Breaking hepatic organoids into single cells lowers the growth rate of the organoids, while breaking them into clusters of cells can greatly improve their viability. Ten minutes was chosen as the incubation time for the organoid protocol. A 12 min incubation timepoint was deemed not cytotoxic compared to a 24 min incubation in the trypsin-like protease experiment.

The survivability experiment confirmed that canine hepatic organoids could survive for up to 19.5 days in unfavorable conditions (structural and nutritional depletion). Organoids that survived these conditions the longest were cultured with CMGF+ media. This observation might have been caused by the slower growth of hepatic organoids in media not supplemented with Rock inhibitor and GSK3 β . Organoid cultures with CMGF+ R/G grew faster and may have depleted their resources faster. This experiment opens possibilities of miniaturizing the canine organoid culture to achieve a high-throughput system conversion. Such a technology shows the potential to facilitate drug discovery or toxicology studies at a substantially reduced cost.

Some common problems encountered during canine organoid culture maintenance are improper sample solidification when plating, culture contamination, and establishing the proper density and size of the organoids. If solubilized ECM solidifies prematurely during plating, immediately place it on ice for 10 min. If solubilized ECM does not form dome-like structures, it is likely that not enough media was removed from the sample. If this is the case, dilute the sample with a more solubilized ECM until domes form.

When fungal or bacterial contamination is found in an entire plate (see **Figure 4**), the best solution is to discard the plate. Treatment with antifungal or antibiotic drugs can be attempted, but the success of such an attempt is extremely low. If a single well is contaminated in a plate, viable and unaffected wells can be cleaned (follow steps 4.1 to 4.5) to a new plate and monitored closely. If the sample has already been Emergency Frozen, it is advisable to discard the entire sample, as thawing the sample exposes the incubator to additional contamination risk.

Healthy organoid culture should be at least in the medium size and medium density category or larger. Optimal density is crucial for organoid culture growth. Lower density must be corrected by cleaning the organoids to medium density. If the situation of extreme density occurs (overcrowding), the organoids should be expanded to more wells. Gross signs of cellular

apoptosis often accompany both overcrowding and low density of the organoid culture. If these issues are not corrected in time, the whole organoid culture will turn apoptotic in a matter of days. If organoids achieve extra large size or very high density, the culture should be used for an experiment, freezing, or fixation.

The organoid media currently contains 17 components, and the addition of growth factors needed for organoid maintenance and expansion can therefore be expensive. This problem can be solved by growing 2D cell cultures that synthesize the growth factors to produce conditioned CMGF+. Cell culture L-WRN produces Wnt-3a, R-Spondin-3, and Noggin growth factors³⁷. The cell colony uses 90% DMEM/F12 and 10% FBS culture media. When the culture achieves 90 percent confluency, media is harvested every day for 1 week. The harvested media is then mixed with 2x CMGF+ (without these growth factors). While 2D cultures can produce the needed growth factors at a fraction of the cost, the added time and preparation to produce the media must be expected. Concentrations of growth factors between conditioned media batches can also differ^{37,38}.

Canine adult stem-cell-derived organoid cultures are a unique biomedical model that can help achieve the goals of the One Health Initiative³⁹. The organoid technology can be used in many basic and biomedical research areas, spanning from developmental biology, pathophysiology, drug discovery and testing, toxicology to the study of infectious diseases and regenerative medicine⁴⁰. Translational and reverse translational research are both areas where canine organoids are applicable¹⁵. Dogs have been used for centuries in translational experimental settings, and their companion animal status has also facilitated their position as one of the most explored species in veterinary medicine.

In conclusion, this manuscript provides standardized operating protocols for isolation, maintenance, harvesting, and biobanking of canine hepatic and intestinal organoids to facilitate the application of this model in various biomedical fields. This model is uniquely suitable to promote reverse translational research as a tool of the One Health Initiative to promote the inter and intradisciplinary sharing of knowledge.

ACKNOWLEDGMENTS:

The authors want to express gratitude to the Veterinary Diagnostic Laboratory of Iowa State University employees, namely, Haley M. Lambert, Emily Rahe, Rosalyn M. Branaman, Victoria J. Green, and Jennifer M. Groeltz-Thrush, for the timely processing of the samples provided. The authors wish to acknowledge support from the Faculty Startup, ISU VPR Miller Award, ISU VPR Miller Award, and NSF SBIR sub-award to ISU # 1912948.

DISCLOSURES:

K. Allenspach is a co-founder of LifEngine Animal Health and 3D Health Solutions. She serves as a consultant for Ceva Animal Health, Bioiberica, LifeDiagnostics, Antech Diagnostics, Deerland Probiotics, and Mars. J. P. Mochel is a co-founder of LifEngine Animal Health and 3D Health Solutions. Dr. Mochel serves as a consultant for Ceva Animal Health and Ethos Animal Health. Other authors do not have any conflicts of interest to declare.

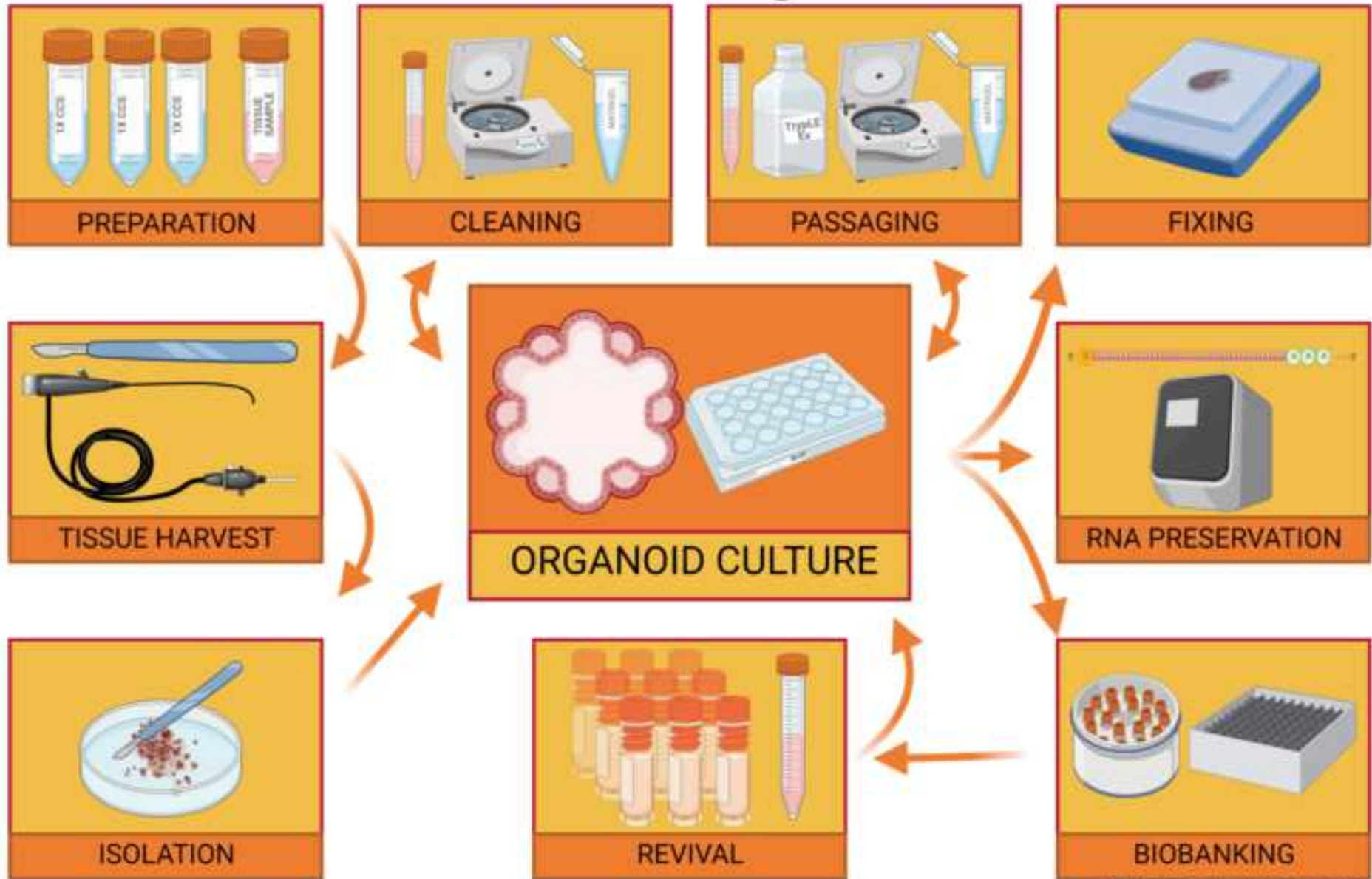
REFERENCES:

1. Hickman, D. L., Johnson, J., Vemulapalli, T. H., Crisler, J. R., Shepherd, R. Commonly used animal models. *Principles of Animal Research for Graduate and Undergraduate Students*. 117–175 (2017).
2. De Jong, M., Maina, T. Of mice and humans: Are they the same? - Implications in cancer translational research. *Journal of Nuclear Medicine*. **51** (4), 501–504 (2010).
3. Cannarozzi, G., Schneider, A., Gonnet, G. A phylogenomic study of human, dog, and mouse. *PLoS Computational Biology*. **3** (1), 0009–0014 (2007).
4. Jacob, J. A. Researchers turn to canine clinical trials to advance cancer therapies. *JAMA - Journal of the American Medical Association*. **315** (15), 1550–1552 (2016).
5. Ziegler, A., Gonzalez, L., Blikslager, A. Large animal models: The key to translational discovery in digestive disease research. *Cellular and Molecular Gastroenterology and Hepatology*. **2** (6), 716–724 (2016).
6. Swanson, K. S. et al. Phylogenetic and gene-centric metagenomics of the canine intestinal microbiome reveals similarities with humans and mice. *ISME Journal*. **5** (4), 639–649 (2011).
7. Coelho, L. P. et al. Similarity of the dog and human gut microbiomes in gene content and response to diet. *Microbiome*. **6** (1), 72 (2018).
8. Nguyen, T. L. A., Vieira-Silva, S., Liston, A., Raes, J. How informative is the mouse for human gut microbiota research? *DMM Disease Models and Mechanisms*. **8** (1), 1–16 (2015).
9. Bontempo, V. Nutrition and health of dogs and cats: Evolution of petfood. *Veterinary Research Communications*. **29** (SUPPL. 2), 45–50 (2005).
10. Allenspach, K., Gaschen, F. Canine chronic enteropathies: A review. *Schweizer Archiv fur Tierheilkunde*. **145** (5), 209–222 (2003).
11. Tribuddharatana, T., Kongpiromchean, Y., Sribhen, K., Sribhen, C. Biochemical alterations and their relationships with the metabolic syndrome components in canine obesity. *Kasetsart Journal - Natural Science*. **45** (4), 622–628 (2011).
12. Chandra, L. et al. Derivation of adult canine intestinal organoids for translational research in gastroenterology. *BMC Biology*. **17** (1), 33 (2019).
13. Schaefer, K., Rensing, S., Hillen, H., Burkhardt, J. E., Germann, P. G. Is Science the only driver in species selection? An internal study to evaluate compound requirements in the minipig compared to the dog in preclinical studies. *Toxicologic Pathology*. **44** (3), 474–479 (2016).
14. MacArthur Clark, J. The 3Rs in research: A contemporary approach to replacement, reduction and refinement. *British Journal of Nutrition*. **120** (s1), S1–S7 (2018).
15. Schneider, B. et al. Model-based reverse translation between veterinary and human medicine: The one health initiative. *CPT: Pharmacometrics and Systems Pharmacology*. **7** (2), 65–68 (2018).
16. Lehmann, R. et al. Human organoids: A new dimension in cell biology. *Molecular Biology of the Cell*. **30** (10), 1129–1137 (2019).
17. Sato, T. et al. Single Lgr5 stem cells build crypt-villus structures in vitro without a mesenchymal niche. *Nature*. **459** (7244), 262–265 (2009).
18. Kim, J., Koo, B. K., Knoblich, J. A. Human organoids: model systems for human biology and medicine. *Nature Reviews Molecular Cell Biology*. **21** (10), 571–584 (2020).
19. Jensen, C., Teng, Y. Is it time to start transitioning from 2D to 3D cell culture? *Frontiers in Molecular Biosciences*. **7**, 33 (2020).

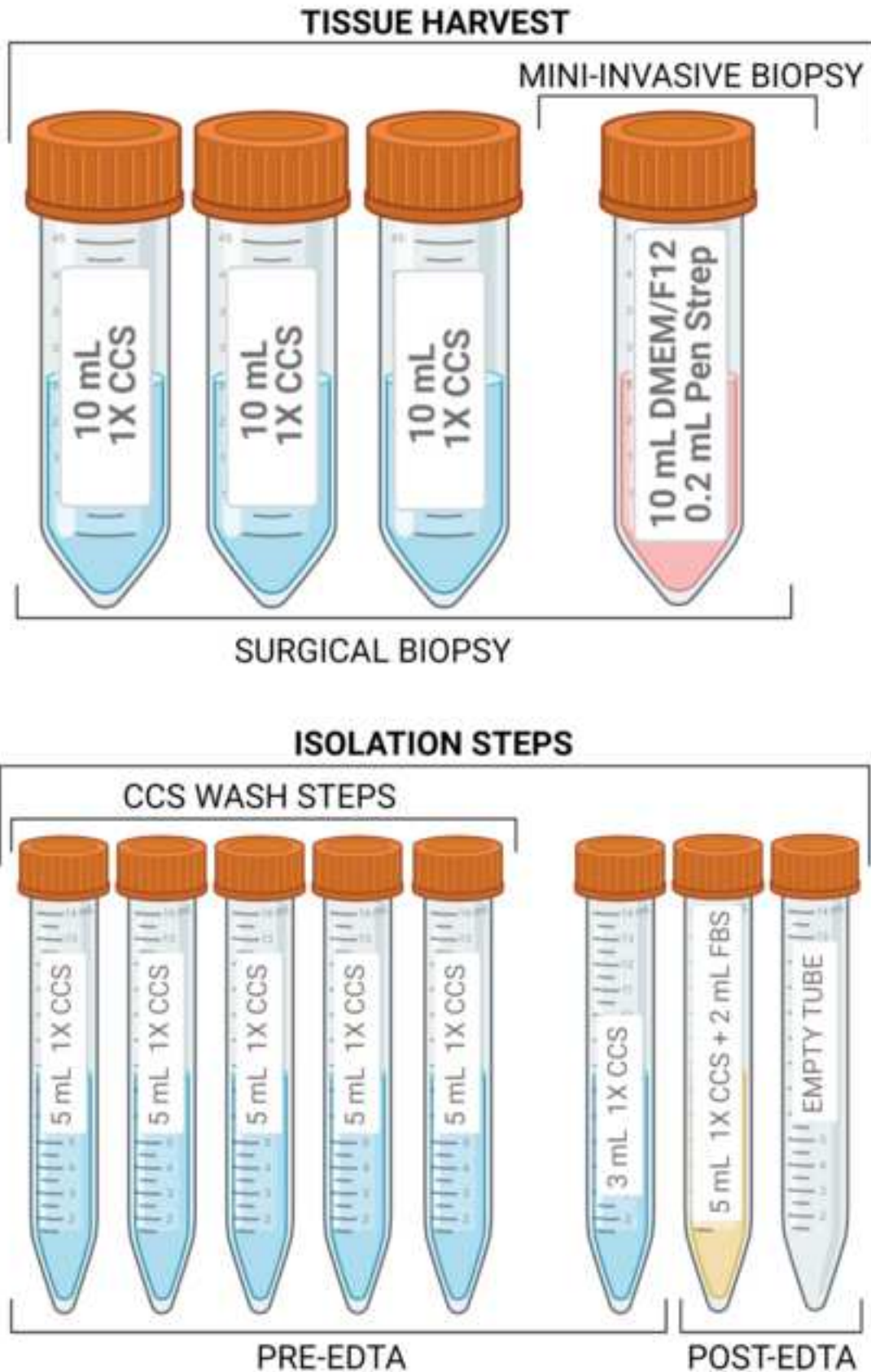
20. Ho, B. X., Pek, N. M. Q., Soh, B. S. Disease modeling using 3D organoids derived from human induced pluripotent stem cells. *International Journal of Molecular Sciences*. **19** (4), 936 (2018).
21. Truskey, G. A. Human microphysiological systems and organoids as in vitro models for toxicological studies. *Frontiers in Public Health*. **6**, 185 (2018).
22. Caipa Garcia, A. L., Arlt, V. M., Phillips, D. H. Organoids for toxicology and genetic toxicology: applications with drugs and prospects for environmental carcinogenesis. *Mutagenesis*. geab023 (2021).
23. Augustyniak, J. et al. Organoids are promising tools for species-specific in vitro toxicological studies. *Journal of Applied Toxicology*. **39** (12), 1610–1622 (2019).
24. Zietek, T. et al. Organoids to study intestinal nutrient transport, drug uptake and metabolism – Update to the human model and expansion of applications. *Frontiers in Bioengineering and Biotechnology*. **8**, 577656 (2020).
25. Zietek, T., Rath, E., Haller, D., Daniel, H. Intestinal organoids for assessing nutrient transport, sensing and incretin secretion. *Scientific Reports*. **5** (1), 1–10 (2015).
26. Kar, S. K. et al. Organoids: a promising new in vitro platform in livestock and veterinary research. *Veterinary Research*. **52** (1), 1–17 (2021).
27. Borchering, D. C. et al. Sa1976 polyphenols reverse the pathologic effects of palmitic acid and high fat diet in canine enteroids. *Gastroenterology*. **158** (6), S-486 (2020).
28. Ambrosini, Y. M. et al. Recapitulation of the accessible interface of biopsy-derived canine intestinal organoids to study epithelial-luminal interactions. *PLoS ONE*. **15** (4), e0231423 (2020).
29. Zdyski, C. et al. Su124 homology directed repair in canine duodenal enteroids to mimic the wild-type P-glycoprotein mutation. *Gastroenterology*. **160** (6), S-625–S-626 (2021).
30. Li, Y., Tang, P., Cai, S., Peng, J., Hua, G. Organoid based personalized medicine: from bench to bedside. *Cell Regeneration*. **9** (1), 21 (2020).
31. Kurr, L. A., Allenspach, K., Jergens, A., Mochel, J. P. Harnessing the biology of intestinal organoids to accelerate drug discovery in inflammatory bowel disease: A one health approach. *The FASEB Journal*. **34** (S1), 1 (2020).
32. Nantasanti, S. et al. Disease modeling and gene therapy of copper storage disease in canine hepatic organoids. *Stem Cell Reports*. **5** (5), 895–907 (2015).
33. Favier, R. P. et al. COMMD1-Deficient dogs accumulate copper in hepatocytes and provide a good model for chronic hepatitis and fibrosis. *PLoS ONE*. **7** (8), e42158 (2012).
34. Kruitwagen, H. S. et al. Long-term survival of transplanted autologous canine liver organoids in a COMMD1-deficient dog model of metabolic liver disease. *Cells*. **9** (2), 410 (2020).
35. Vilgelm, A. E. et al. Fine-needle aspiration-based patient-derived cancer organoids. *iScience*. **23** (8), 101408 (2020).
36. Saxena, K. et al. Human intestinal enteroids: A new model to study human rotavirus infection, host restriction, and pathophysiology. *Journal of Virology*. **90** (1), 43–56 (2016).
37. VanDussen, K. L., Sonnek, N. M., Stappenbeck, T. S. L-WRN conditioned medium for gastrointestinal epithelial stem cell culture shows replicable batch-to-batch activity levels across multiple research teams. *Stem Cell Research*. **37**, 101430 (2019).
38. Powell, R. H., Behnke, M. S. WRN conditioned media is sufficient for in vitro propagation of intestinal organoids from large farm and small companion animals. *Biology Open*. **6** (5), 698–705 (2017).

- 834 39. Mackenzie, J. S., Jeggo, M. The one health approach-why is it so important? *Tropical*
835 *Medicine and Infectious Disease*. **4** (2), 88 (2019).
- 836 40. Artegiani, B., Clevers, H. Use and application of 3D-organoid technology. *Human*
837 *Molecular Genetics*. **27** (2), R99–R107 (2018).
- 838

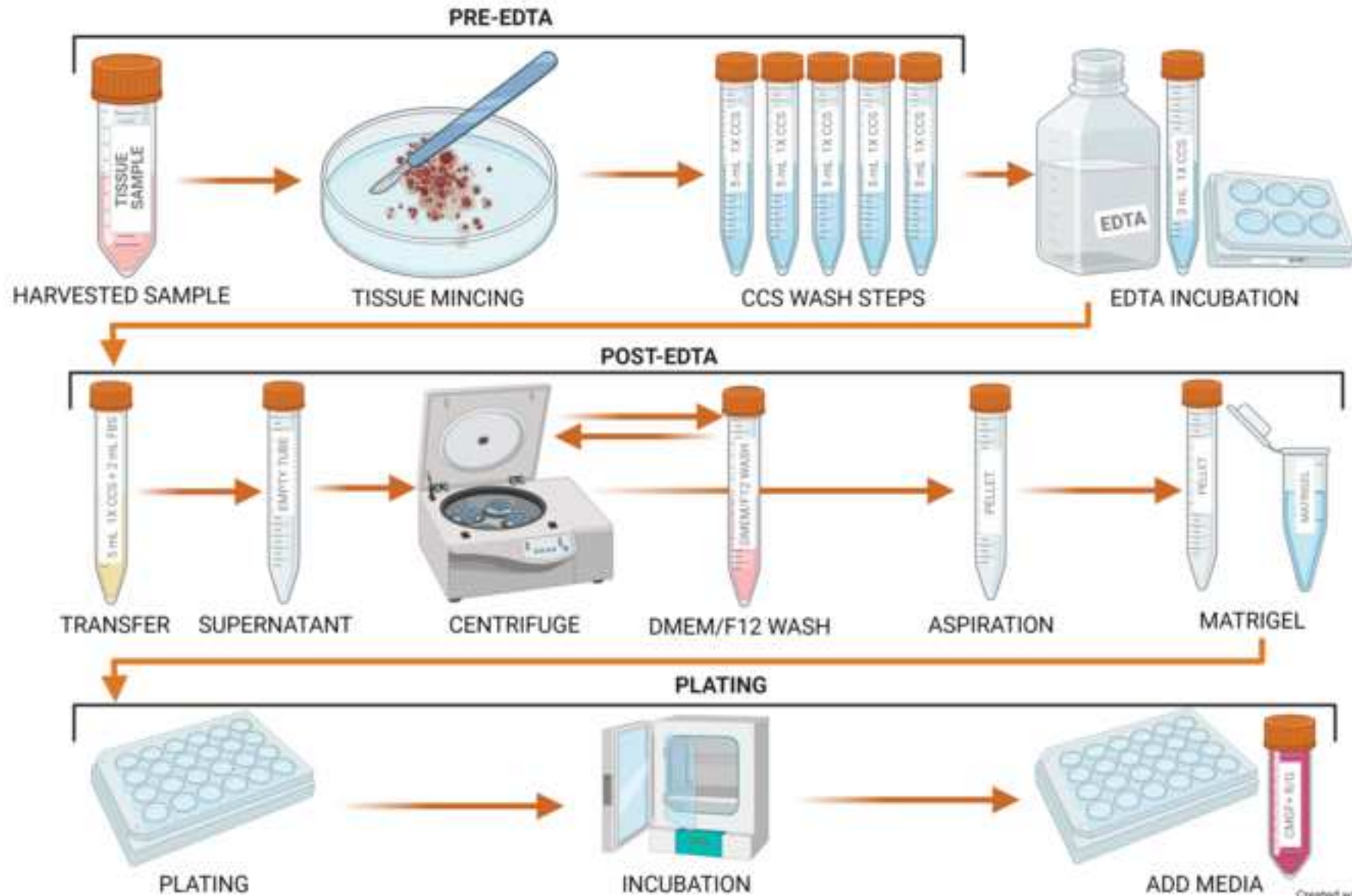
Workflow of Canine Organoid Protocols



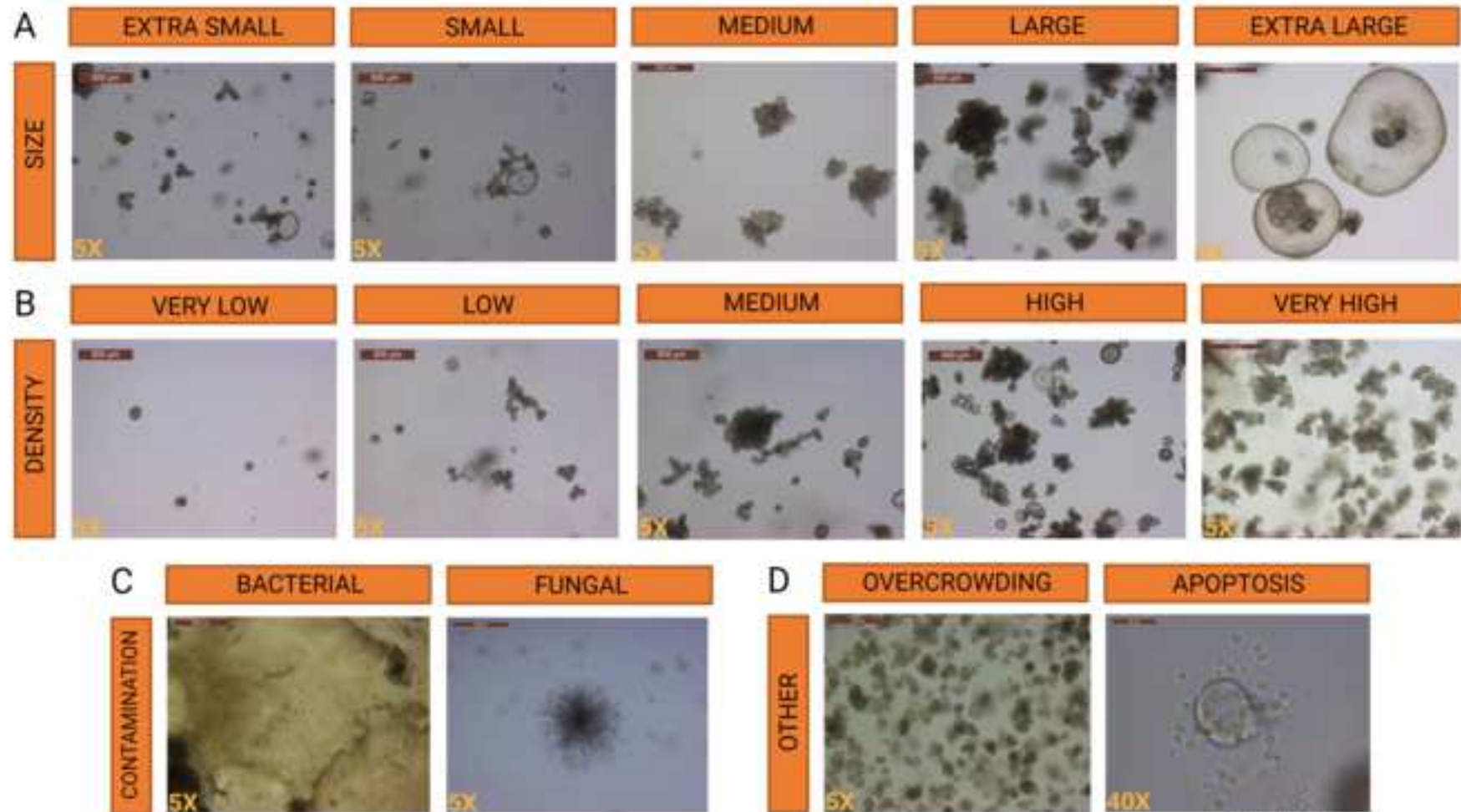
Isolation Tube Layout



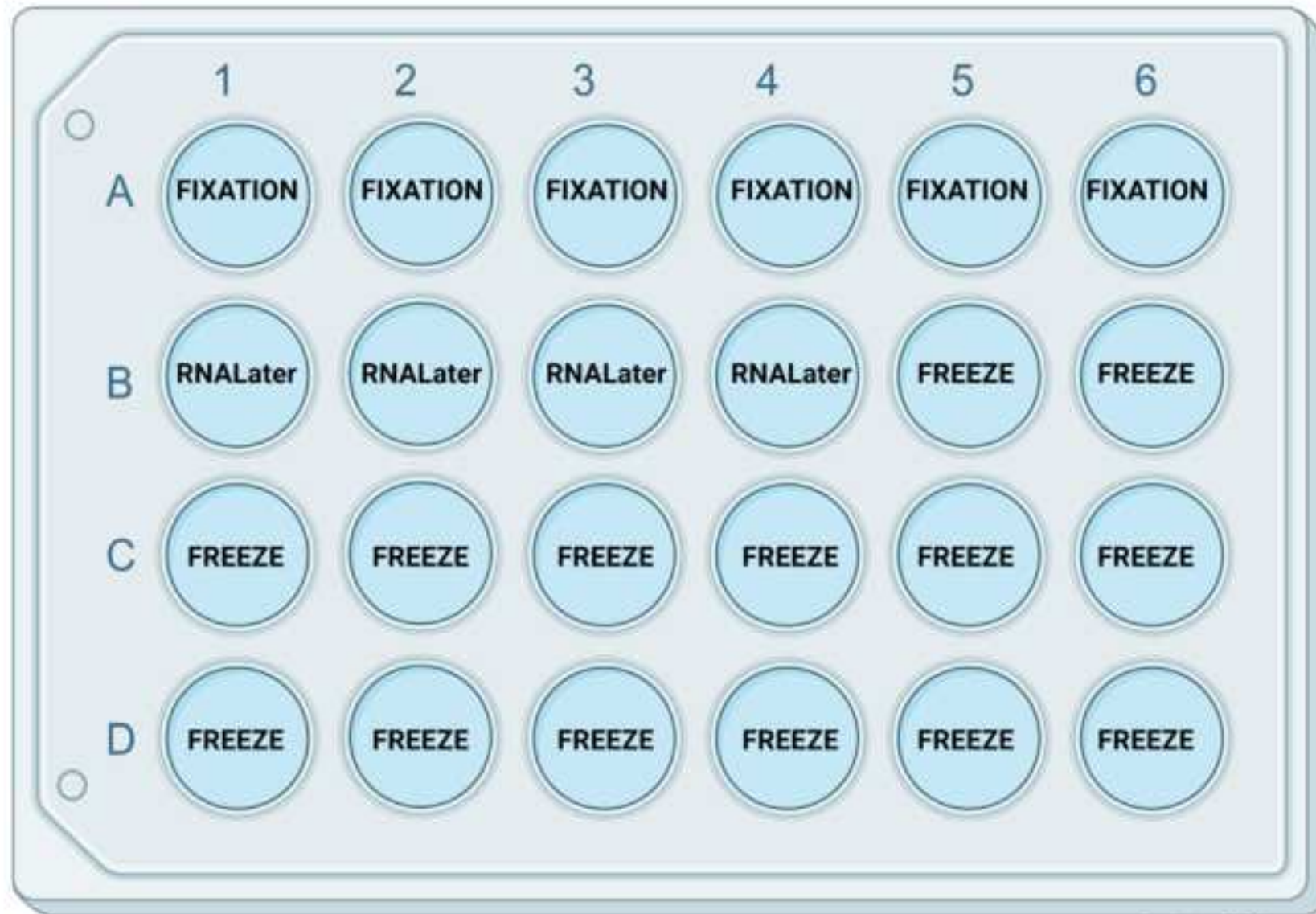
Canine Organoid Isolation Workflow



Organoid Sizing and Density Guide

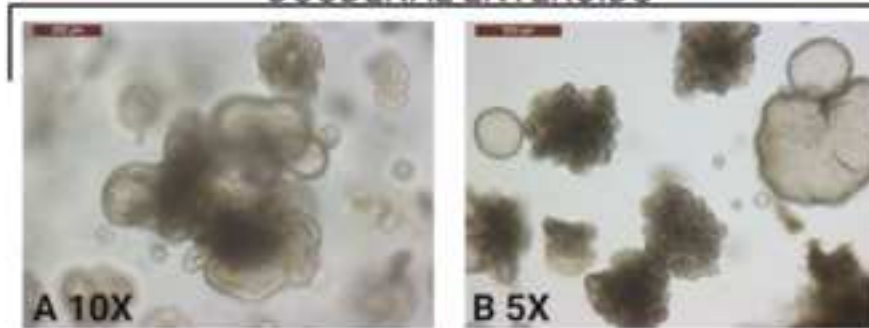


Recommended 24-well Plate Layout

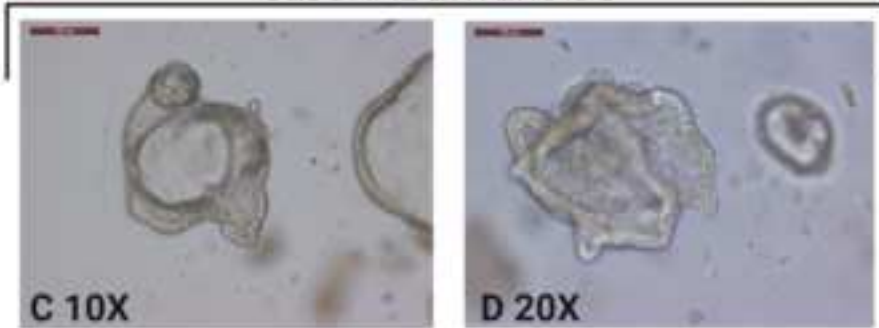


Representative Images of Canine Organoids

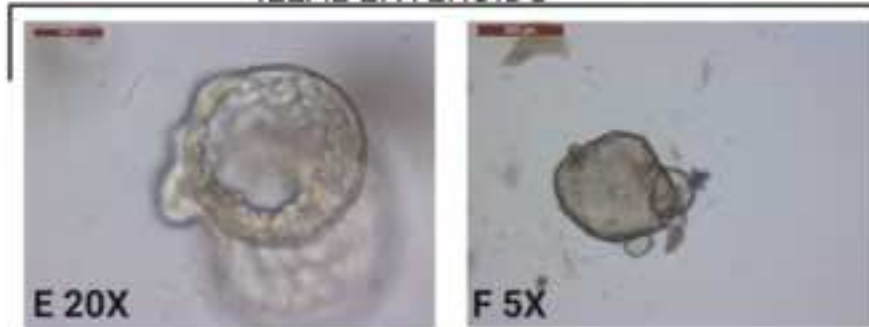
DUODENAL ENTEROIDS



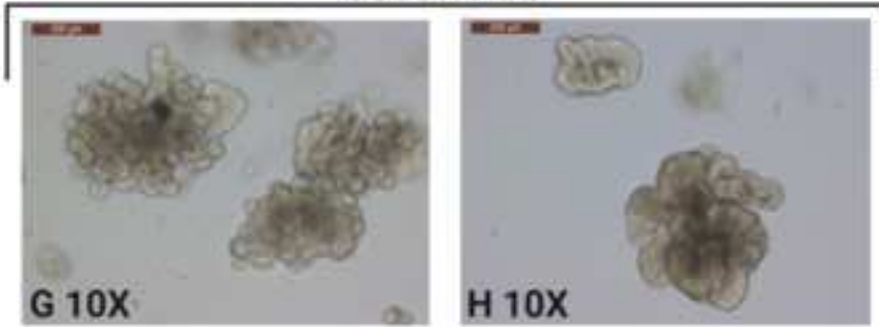
JEJUNAL ENTEROIDS



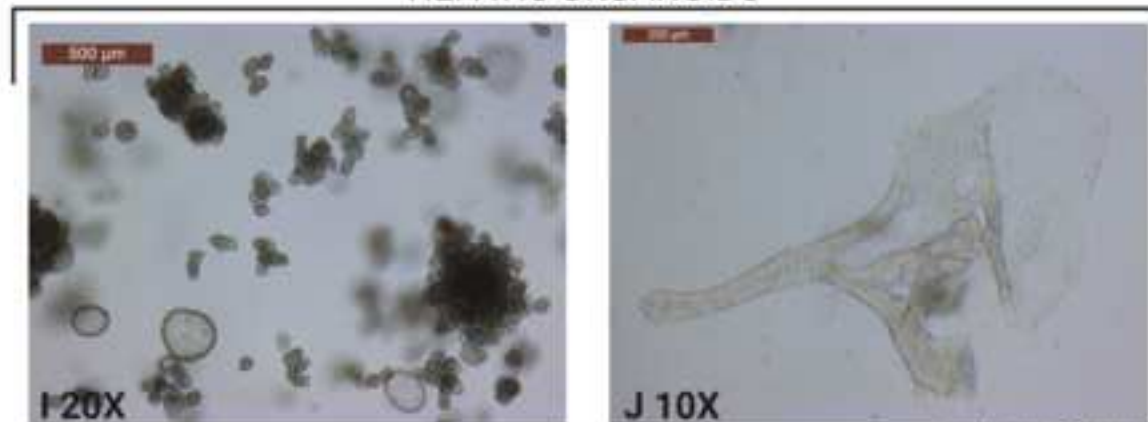
ILEAL ENTEROIDS



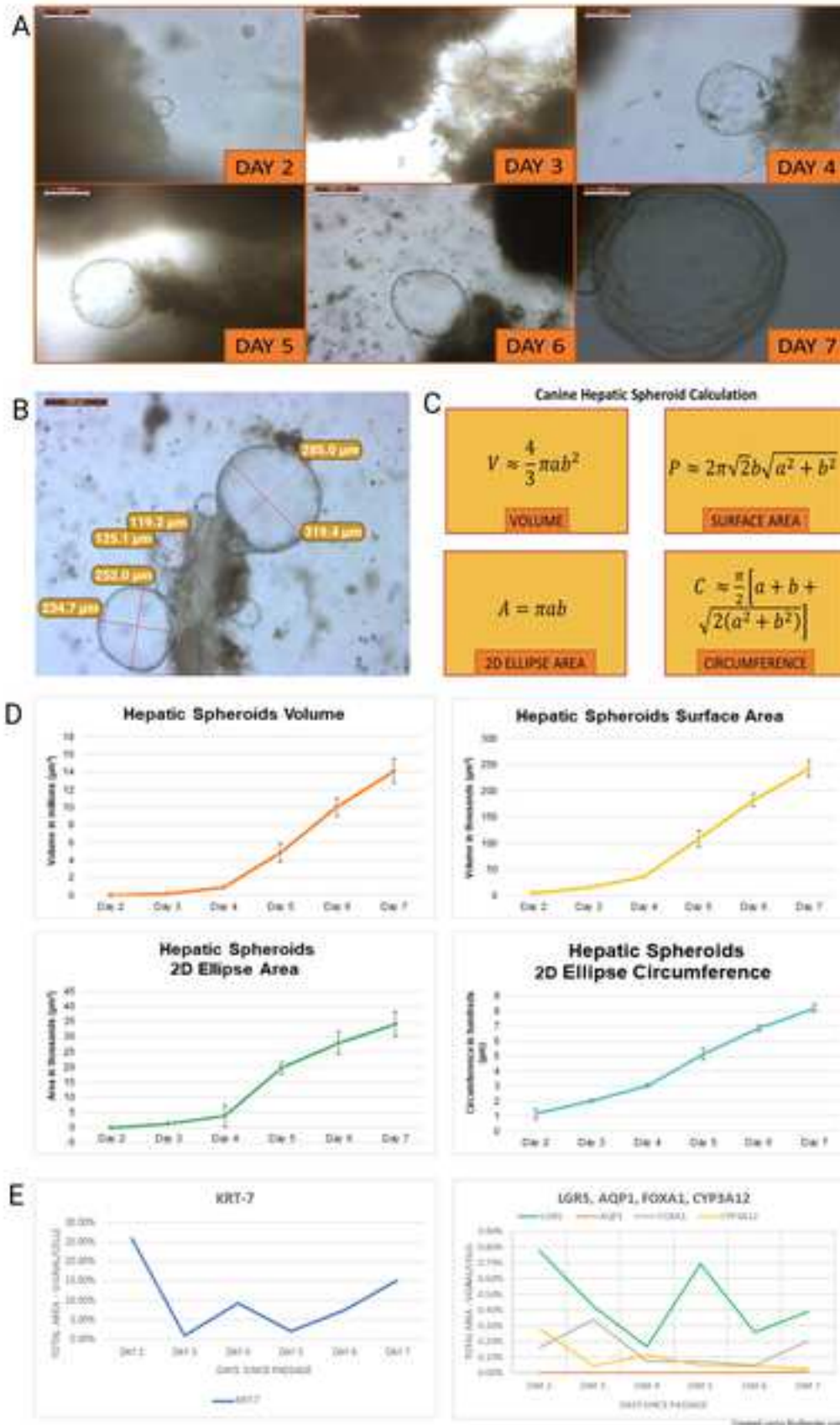
COLONOIDS



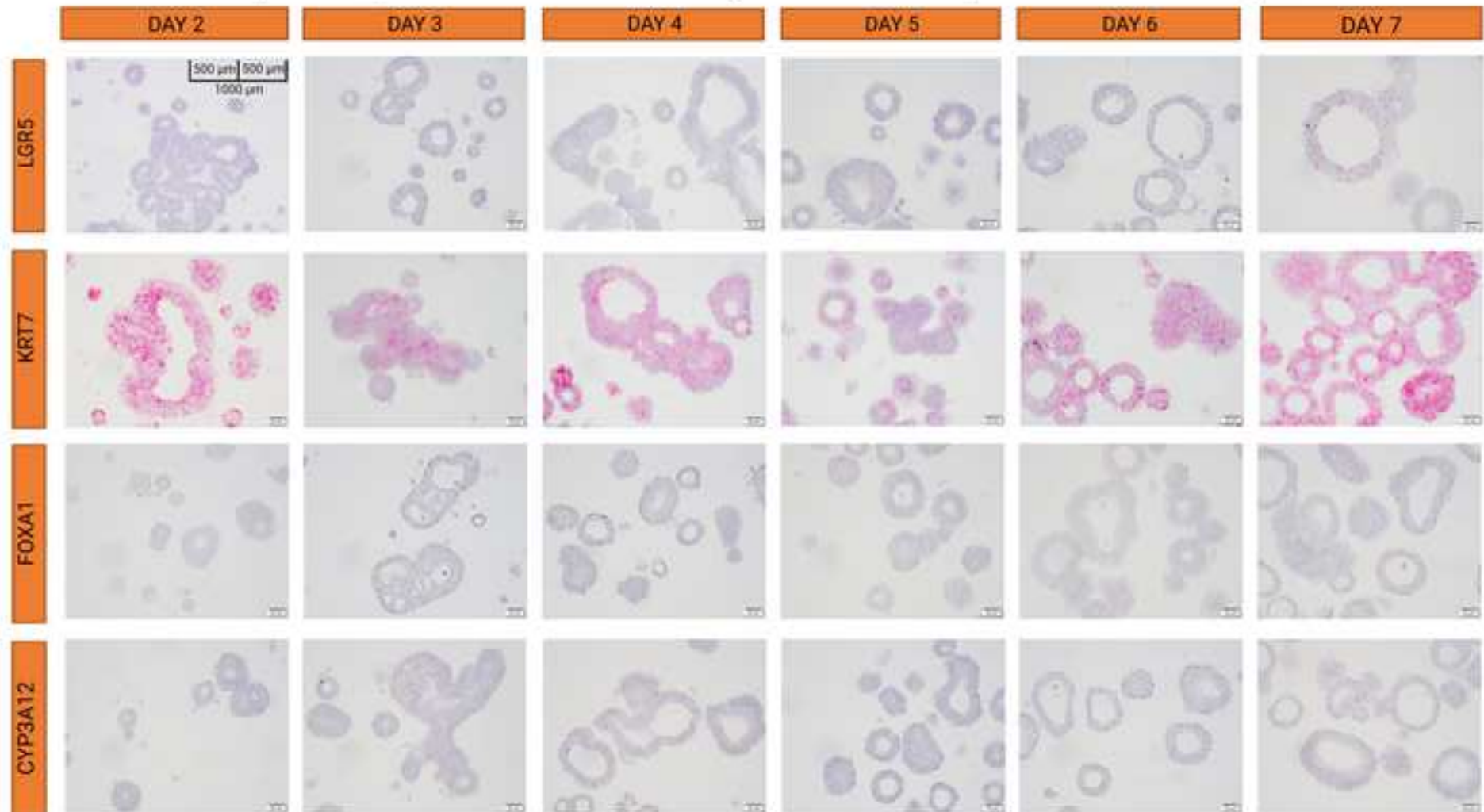
HEPATIC ORGANOIDS



Hepatic Spheroid Measurements



Hepatic Spheroids RNA in situ hybridization Representative Images

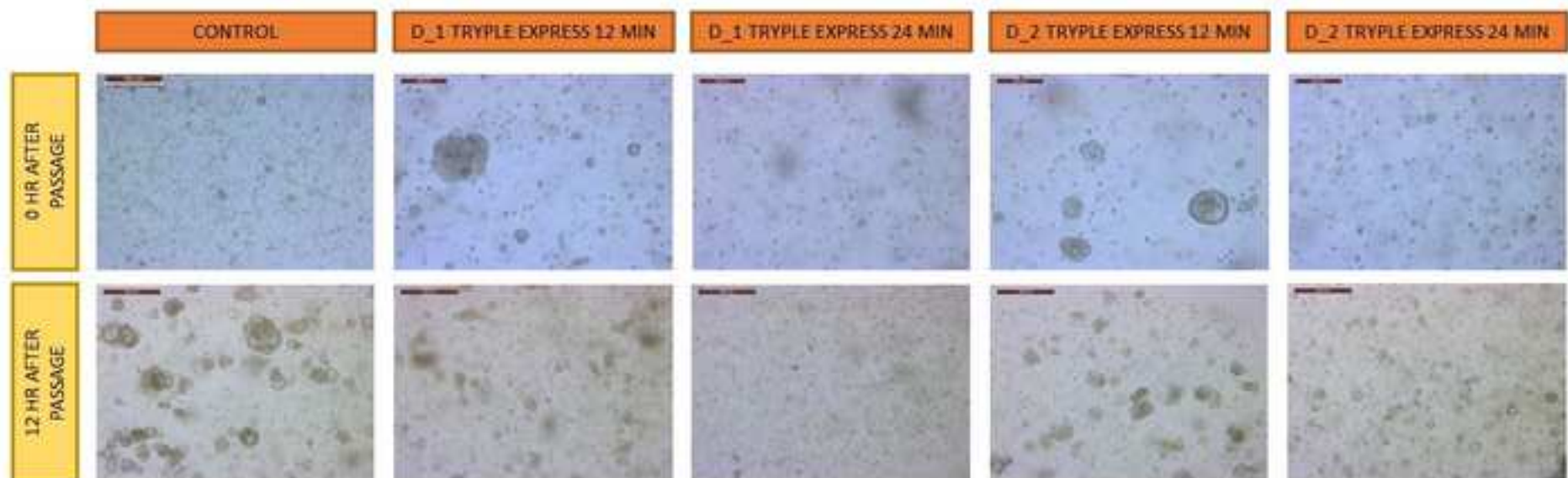


AQP1 was not expressed.

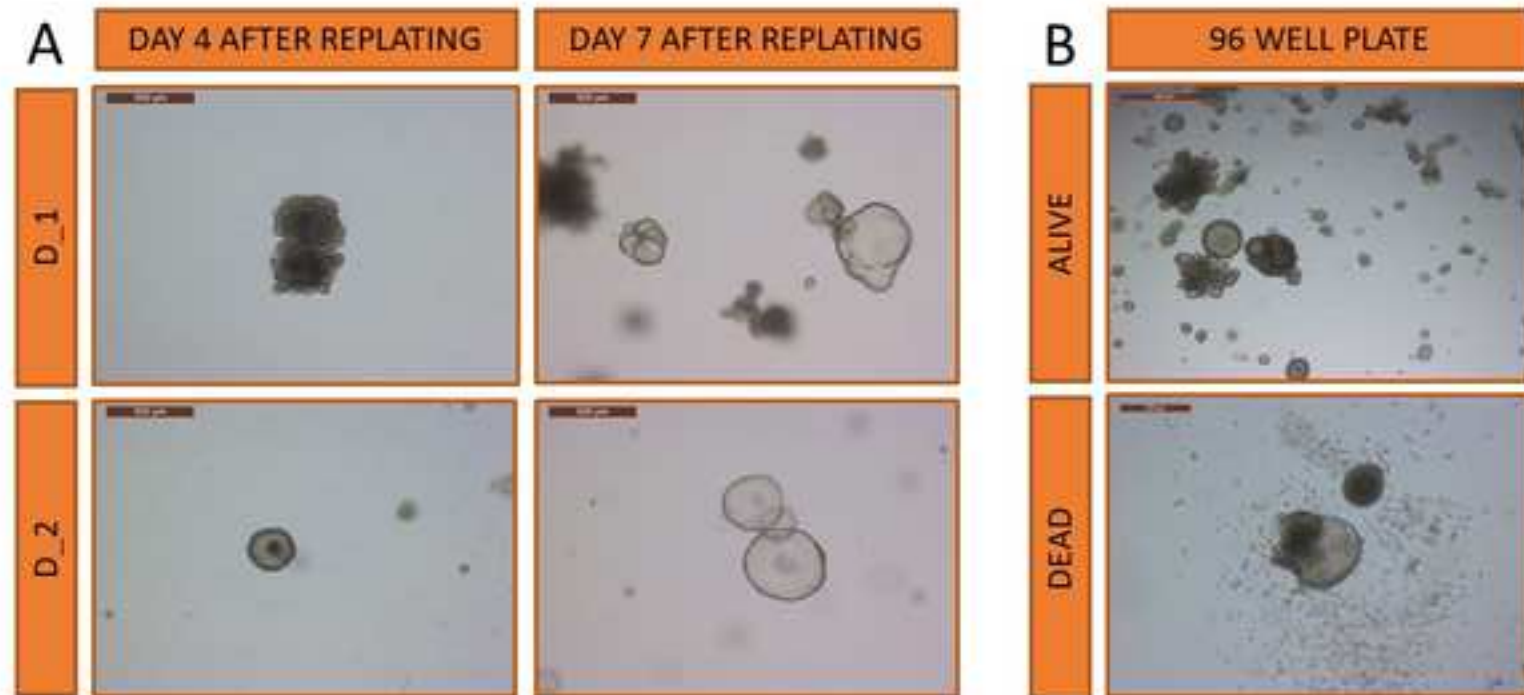
All images were captured at 60X objective magnification, except for LGR5 DAY2 that was captured at 40X objective magnification.

Created using BioRender.com

Canine Hepatic Organoid Passage Experiment



Organoids Nutritional and Structural Deprivation



Incomplete chelating solution (ICS) composition	Final concentration
500 mL H ₂ O	NA
2.49 g Na ₂ HPO ₄ ·2H ₂ O	4.98 mg/mL
2.7 g KH ₂ PO ₄	5.4 mg/mL
14 g NaCl	28 mg/mL
0.3 g KCl	0.6 mg/mL
37.5 g Sucrose	75 mg/mL
25 g D-Sorbitol	50 mg/mL
Complete chelating solution (CCS) composition	V/V % or final concentration
Incomplete chelation solution	20%
Sterile H ₂ O	80%
DTT	520 μM
Pen Strep	Pen: 196 U/mL; Strep 196 ug/mL

Organoid media composition	Final concentration
Advanced DMEM/F12	NA
FBS	8%
Glutamax	2 mM
HEPES	10 mM
Primocin	100 μg/mL
B27 supplement	1x
N2 supplement	1x
N-Acetyl-L-cysteine	1 mM
Murine EGF	50 ng/mL
Murine Noggin	100 ng/mL
Human R-Spondin-1	500 ng/mL
Murine Wnt-3a	100 ng/mL
[Leu ¹⁵]-Gastrin I human	10 nM
Nicotinamide	10 mM
A-83-01	500 nM
SB202190 (P38 inhibitor)	50 μM
TMS (trimethoprim sulfate)	10 μg/mL
Additional components	Final concentration
ROCK inhibitor (Y-27632)	10 μM
Stemolecule CHIR99021 (GSK3β)	2.5 μM

Freezing media composition	V/V percent
Organoid media and ROCK inhibitor	50%
FBS	40%
Dimethyl Sulfoxide (DMSO)	10%

FAA composition	V/V percent
Ethanol (100%)	50%
Acetic Acid, Glacial	5%
Formaldehyde (37%)	10%
Distilled water	35%

Media change recommendation

Monday	Tuesday	Wednesday	Thursday	Friday	Saturday	Sunday
500 µL	N/A	500 µL	N/A	750 µL	N/A	N/A

Media Type		Mean (days survived)	Median	CV%	Mean (days survived)	Median
Media (µL)		30			25	
ECM (µL)		10			10	
D_1	CMGF+ R/G	12.50	13	11.57	12.83	13
	CMGF+	17.08	17	16.26	18.50	19
D_2	CMGF+ R/G	13.67	14	13.36	13.00	13
	CMGF+	15.50	15	18.56	17.50	18
TOTAL	CMGF+ R/G	13.08	13	13.13	12.92	13
	CMGF+	16.29	16.5	17.69	18.00	18.5

death= more than 50% of organoid mass are unviable

CV%	Mean (days survived)	Median	CV%	Mean (days survived)	Median	CV%
		35			30	
		10			15	
4.50	11.83	11.5	12.91	12.08	13	12.46
4.89	18.42	19	14.54	17.82	19	8.99
12.70	14.00	14.5	17.23	13.08	13	8.90
10.48	17.50	19	20.89	17.00	17	14.41
9.39	12.92	13	17.52	12.58	13	11.22
8.35	17.96	19	17.65	17.43	17	11.70



Click here to access/download

Table of Materials

Table of Materials.xlsx



Dear Editors,

We want to express gratitude for both the editorial and reviewer's comments. Our group addressed these notes, responding to each comment below.

We strongly believe that our manuscript is in good shape to be published in the Journal of Visualized Experiments.

Thank you very much for your great cooperation and happy holidays to all.

Vojtech Gabriel and SMART Lab collective

Editorial comments:

1. Please take this opportunity to thoroughly proofread the manuscript to ensure that there are no spelling or grammar issues.

- We made sure to read the manuscript again to catch the last spelling and grammar issues

2. Please revise the text to avoid the use of any personal pronouns (e.g., “we”, “you”, “our” etc.)

- The text was revised for personal pronouns and they were removed (namely, “we”, “our”, “you”, and “your”).

3. JoVE cannot publish manuscripts containing commercial language. This includes trademark symbols (™), registered symbols (®), and company names before an instrument or reagent. Please remove all commercial language from your manuscript and use generic terms instead. All commercial products should be sufficiently referenced in the Table of Materials (Falcon, TrypLE Express, Matrigel, Mr. Frosty, CoolCell LX, RNAScope technology, etc.)

- The protocol has been checked for trademark and registered symbol marks, but none were located. The commercial product names were replaced by generic names (Falcon tube – centrifuge tube; TrypLE Express – trypsin-like protease; Matrigel - solubilized extracellular membrane matrix; Mr. Frosty – freezing container; CoolCell LX - alcohol-free cell freezing container; RNAScope technology – RNA in situ hybridization, RNAlater – RNA storage reagent, Parafilm – laboratory flexible film tape). We checked the Table of Materials for presence of these commercial products and added RNAScope equipment and Parafilm.

4. Use h for hours, min for minutes, and s for seconds throughout the manuscript.

- We replaced the aforementioned terms with their abbreviations.

5. Please ensure that all text in the protocol section is written in the imperative tense as if telling someone how to do the technique (e.g., “Do this,” “Ensure that,” etc.). The actions should be described in the imperative tense in complete sentences wherever possible. Avoid usage of phrases such as “could be,” “should be,” and “would be” throughout the Protocol. Any text that cannot be written in the imperative tense may be added as a “Note.” However, notes should be concise and used sparingly.

- We replaced “could be,” “should be,” and “would be” and made sure that the replacements are written in the imperative tense format.

6. Lines 270-276; 327-333; 371-374: The Protocol should contain only discrete action items that direct the reader to do something without large paragraphs of text between sections

- The lines have been incorporated into notes, we find that to be the best solution, as we believe the information provided is essential for the optimal results following the protocols.

7. Figure 7B: Please make the measured radii legible by increasing the font size.

- The font size of the measurements in Fig 7B were increased.

8. Figure 8: Please make the scale legible by increasing the font size. Alternatively, indicate the scale in the legend.

- The scale has been indicated in the legend for Figure 8.

Reviewer #1:

Manuscript Summary: In this manuscript, the authors provide a protocol for the generation of canine hepatic, intestinal and colonic organoids, maintenance, cryopreservation, and downstream applications. The protocol is of great interest to the broader scientific community and is overall clear and well written. This group has previously published on canine organoids and is in a great position to publish such as method-paper. I have a few minor comments that require the author’s attention.

- Thank you for your kind words.

Overall I would highly recommend adding a subsection about challenges and troubleshooting as well as limitation of the protocol.

- This section has been created in the discussion, providing troubleshooting guide on organoid growth (also section 10.5 has been moved here)

Minor Concerns:

Abstract:

1. Overall, I agree with the authors that the dog, as a species, has great potential as a model-species for human disease. Nonetheless, dogs significance as pets in millions of households and associated veterinary applications should be highlighted as well. These two perspectives of canine diseases are complimentary.

- Thank you for this input and I agree. I added a sentence describing advantages of such a technology for companion dogs.

2. Lines 41-42: I recommend not mentioning specific diseases but rather state disease families such as inflammatory disease, metabolic disease and cancer. While IBD in dogs is an established entity, it is not identical to human IBD. Moreover, fatty liver disease and Alzheimer's disease are human diseases that have canine parallels. Dogs suffer from many complex and multifactorial disease that have multiple similarities with human diseases, but they are also different in many ways. A disease model will never be identical to the human disease.

- I agree and will keep it in general terms, thank you.

3. Line 44 - organoids may be derived from pluripotent stem cells as well.

- Agreed and corrected.

4. Lines 47-8: The sentence needs to be restructured.

- The sentence has been deleted to make space for veterinary applications in the abstract.

5. Line 53 - "... and embed stem cells...". The latter statement may be understood as if stem cells are being selected/enriched prior to embedding. Since a crude cell isolate is plated in matrigel, I would suggest stating it as such.

- The sentence was changed to reflect the isolation process.

Introduction:

I think that the cited literature is not synced with the manuscript. I did not see Ref #6 in the text and at the end of line 72 citations #11 and 12 are indicated whereas the appropriate citations are #10 and 11.

- Thank you for noticing and I corrected the problem manually as Mendeley citations are no longer present.

1. Line 62: I would recommend avoiding the term 'genetic disease' and suggest emphasizing the more basic, molecular pathogenesis type of research that could be done only in rodents.

- Sentence has been reworded with the suggested replacement.

2. Line 75: Citation #13 seems inappropriate to support the previous statement.

- The sentence has been restructured to avoid the claim. Thank you.

3. Line 82: suggest replacing 'oncogenic' with 'cancer' cell lines.

- The word was replaced.

4. Line 95: can the authors please clarify the use of the term "reverse translational research"?

- An explanation of the term has been added to the sentence.

Canine Organoid Isolation Protocol:

1. Line 143: Can the authors specific what are the considerations in using vs not using NAC?

- An explanation has been added to the note.

2. Lines 196-7: Do the authors have any experimental data (new or citation) to support their statement regarding the potential 24 hour pause?

- The sentence had been removed, as we can't find a citation, and the information is based on the lab experience.

Organoid Isolation:

1. Line 245: suggest using the terms "dissociated cells and tissue" instead of minced tissues and

stem cells. The EDTA treatment is facilitating the dissociation of all epithelial cells and not stem cell specific.

- Thank you for suggestion, and I incorporated the change.

Organoid cleaning:

1. Please provide some more context. When should a researcher consider applying this method? Please be more specific.

- The paragraph has been rewritten to provide more information.

2. Line 292: Please consider replacing 'transfer organoids' with 'transfer the organoid-containing dissolved matrigel'.

- The sentence has been updated with suggested above.

3. Line 293: '... if needed'. How does one determine if it is needed?

- Explanation added to the manuscript

Fixation of organoids:

Can the authors provide more information on downstream processing of the organoids after they have been fixed? In what type of molds are they being embedded in paraffin?

- I contacted our VDL to figure out the question on the molds, I added their answer in the manuscript.

RNA preservation:

- Note has been added to the RNA preservation section, stating the total ng RNA per cryovial.

Organoid biobanking:

Line 392: please add the more formal description 'cell freezing container' along with the common, but trademarked 'Mr. Frosty'.

- The trademarked names were replaced with generic names – editorial comments.

Controlling contamination:

This section is mostly redundant. These are all generic good practices for any cell culture. Section 10.5 could be added to the proposed Troubleshooting section.

- The section has been removed and 10.5 has been moved to the troubleshooting section.

Representative results:

1. Lines 476: It is sufficient to state that the various indices (i.e. V, P, A and C) were calculated. The term 'based on mathematical calculations' does not provide any useful information.

- I removed the mention of the mathematical calculations.

2. Since data presented in Sup figure 1 are novel, I recommend that it is added as one of the main figures. I also recommend adding a higher power image (potentially as an inset) to provide better appreciation of staining properties.

- Sup fig. 1 has been moved and is now Fig. 8. I retook the images in 60X magnification.

3. Lines 503-515: These data are from a single experiment (1 well each?) with 2 cell lines. Results should be repeated, quantified and analyzed prior to reporting.

- The experiment was performed in 6 wells with 2 cell lines. (Added to the protocol) The quantification of such an experiment is complicated due to the lack of standardization of the 3D model measurements (problem we are trying to address in the first experiment). We are using this experiment as a justification for our protocols methods and not a standalone experiment. Therefore, I added following to the experimental description: "10 min was chosen as the incubation for the organoid protocol as a 12 min incubation timepoint was deemed not cytotoxic as compared to a 24 min incubation in the Trypsin-like protease experiment."

4. Lines 519-532: The context for this experiment is unclear to me. What questions were the authors trying to answer?

- The explanation of the context has been added to the results section.

Figure legends:

Figure 1: Stem cells are not isolated as part of this process. Cells are dissociated and the entire cell population is plated. While all other cell types will undergo apoptosis (sooner or later), the stem cell population is the one responsible for the long-term culture capacity.

- The misunderstanding was corrected.

Figure 6 - Suggest removing the term 'genetic' applications and stick with 'downstream applications'. For Figure 6 itself, suggest using images with consistent magnification. Also please make sure you state if indicated numbers represent total magnification or objective lens only.

- Located to Figure 5 and corrected.

Figure 7 - The lines in the graph indicating LGR5, AQP1 etc. are too similar and hard to differentiate. Please use colors with better contrasts.

- The graph was recolored.

Discussion:

1. Lines 653-55: The authors state that 'we did not observe any signs of cellular apoptosis...'. I suggest adding the term 'gross signs of cellular apoptosis' as the authors did not do any specific and more sensitive assays to detect evidence of apoptosis.

- "Gross" added to the sentence.

Thank you for your comments, I appreciate it!

Reviewer #2:

Manuscript Summary: In this manuscript, the authors presented the experimental methods to harvest adult stem cells from canine intestinal and hepatic tissues to establish 3D organoid cultures. The authors introduced three protocols, including isolation, maintenance, and banking. The protocols were clearly described and easy to follow. The schematics and the experimental images were well presented. Minor revision is required.

- Thank you very much for kind words.

Major Concerns:

1. Fig. 4 showed different density and size. What density/size is preferred, or it does not matter? Please make it clear.

- In order to answer this question, I added a few sentences in the "troubleshooting" section in the discussion.

Minor Concerns:

1. Please provide the full name of CMGF+.

- I made clearer what CMGF+ means when first met in the text (line 168).

2. Please explain the purpose of using CCS, NAC solution, CMGF+, and FAA.

- Purpose of CCS and NAC added to line 145. CMGF+ explanation added to line 168. FAA comment added to line 355.

3. In section 3.2, please indicate the ideal piece size.

- Added the size to line 211.

Thank you very much for your time!

Date:

Sample	Size					Type		Density					To Be Done				#	Notes	Media	
	XS	S	M	L	XL	Sph.	Org.	VLD	LD	MD	HD	VHD	Change	Clean	Passage	Toss			R/G	CMGF+
	XS	S	M	L	XL	Sph.	Org.	VLD	LD	MD	HD	VHD	Change	Clean	Passage	Toss			R/G	CMGF+
	XS	S	M	L	XL	Sph.	Org.	VLD	LD	MD	HD	VHD	Change	Clean	Passage	Toss			R/G	CMGF+
	XS	S	M	L	XL	Sph.	Org.	VLD	LD	MD	HD	VHD	Change	Clean	Passage	Toss			R/G	CMGF+
	XS	S	M	L	XL	Sph.	Org.	VLD	LD	MD	HD	VHD	Change	Clean	Passage	Toss			R/G	CMGF+
	XS	S	M	L	XL	Sph.	Org.	VLD	LD	MD	HD	VHD	Change	Clean	Passage	Toss			R/G	CMGF+
	XS	S	M	L	XL	Sph.	Org.	VLD	LD	MD	HD	VHD	Change	Clean	Passage	Toss			R/G	CMGF+
	XS	S	M	L	XL	Sph.	Org.	VLD	LD	MD	HD	VHD	Change	Clean	Passage	Toss			R/G	CMGF+
	XS	S	M	L	XL	Sph.	Org.	VLD	LD	MD	HD	VHD	Change	Clean	Passage	Toss			R/G	CMGF+
	XS	S	M	L	XL	Sph.	Org.	VLD	LD	MD	HD	VHD	Change	Clean	Passage	Toss			R/G	CMGF+
	XS	S	M	L	XL	Sph.	Org.	VLD	LD	MD	HD	VHD	Change	Clean	Passage	Toss			R/G	CMGF+
	XS	S	M	L	XL	Sph.	Org.	VLD	LD	MD	HD	VHD	Change	Clean	Passage	Toss			R/G	CMGF+
	XS	S	M	L	XL	Sph.	Org.	VLD	LD	MD	HD	VHD	Change	Clean	Passage	Toss			R/G	CMGF+
	XS	S	M	L	XL	Sph.	Org.	VLD	LD	MD	HD	VHD	Change	Clean	Passage	Toss			R/G	CMGF+
	XS	S	M	L	XL	Sph.	Org.	VLD	LD	MD	HD	VHD	Change	Clean	Passage	Toss			R/G	CMGF+
	XS	S	M	L	XL	Sph.	Org.	VLD	LD	MD	HD	VHD	Change	Clean	Passage	Toss			R/G	CMGF+
	XS	S	M	L	XL	Sph.	Org.	VLD	LD	MD	HD	VHD	Change	Clean	Passage	Toss			R/G	CMGF+
	XS	S	M	L	XL	Sph.	Org.	VLD	LD	MD	HD	VHD	Change	Clean	Passage	Toss			R/G	CMGF+
	XS	S	M	L	XL	Sph.	Org.	VLD	LD	MD	HD	VHD	Change	Clean	Passage	Toss			R/G	CMGF+
	XS	S	M	L	XL	Sph.	Org.	VLD	LD	MD	HD	VHD	Change	Clean	Passage	Toss			R/G	CMGF+
	XS	S	M	L	XL	Sph.	Org.	VLD	LD	MD	HD	VHD	Change	Clean	Passage	Toss			R/G	CMGF+
	XS	S	M	L	XL	Sph.	Org.	VLD	LD	MD	HD	VHD	Change	Clean	Passage	Toss			R/G	CMGF+
	XS	S	M	L	XL	Sph.	Org.	VLD	LD	MD	HD	VHD	Change	Clean	Passage	Toss			R/G	CMGF+
	XS	S	M	L	XL	Sph.	Org.	VLD	LD	MD	HD	VHD	Change	Clean	Passage	Toss			R/G	CMGF+
	XS	S	M	L	XL	Sph.	Org.	VLD	LD	MD	HD	VHD	Change	Clean	Passage	Toss			R/G	CMGF+
	XS	S	M	L	XL	Sph.	Org.	VLD	LD	MD	HD	VHD	Change	Clean	Passage	Toss			R/G	CMGF+
	XS	S	M	L	XL	Sph.	Org.	VLD	LD	MD	HD	VHD	Change	Clean	Passage	Toss			R/G	CMGF+

Notes:

[illegible]

Target marker	Abbr.	Significance
Aquaporin 1	AQP1	Cholangiocyte marker
Cytochrome P450 3A12	CYP3A12	Hepatocyte marker
Cytokeratin 7	KRT7	Cholangiocyte marker
Forkhead box protein A1	FOXA1	Hepatocyte marker
Leucine-Rich Repeat-containing G-Protein Coupled Receptor 5	LGR5	Stem cell marker

Probe	Reference #	Target region
CI-AQP1	NM_001003130.1	3 - 869
CI-CYP3A12	NM_001003340.1	2-1823
CI-KRT7	XM_005636798.2	418-1640
CI-FOXA1	XM_847261.4	1425-2391
CI-LGR5	XM_846738.2	517 - 1506



1 Alewife Center #200
Cambridge, MA 02140
tel. 617.945.9051
www.jove.com

ARTICLE AND VIDEO LICENSE AGREEMENT

Title of Article:

PROTOCOLS FOR THE STANDARDIZATION OF CULTURE AND MAINTENANCE
OF 3D CANINE HEPATIC AND INTESTINAL ORGANODS FOR USE IN BIOMEDICAL RESEARCH

Author(s):

VOJTECH GABRIEL

Item 1: The Author elects to have the Materials be made available (as described at <http://www.jove.com/publish>) via:

☐ Standard Access

☒ Open Access

Item 2: Please select one of the following items:

☒ The Author is **NOT** a United States government employee.

☐ The Author is a United States government employee and the Materials were prepared in the course of his or her duties as a United States government employee.

☐ The Author is a United States government employee but the Materials were NOT prepared in the course of his or her duties as a United States government employee.

ARTICLE AND VIDEO LICENSE AGREEMENT

1. **Defined Terms.** As used in this Article and Video License Agreement, the following terms shall have the following meanings: "**Agreement**" means this Article and Video License Agreement; "**Article**" means the article specified on the last page of this Agreement, including any associated materials such as texts, figures, tables, artwork, abstracts, or summaries contained therein; "**Author**" means the author who is a signatory to this Agreement; "**Collective Work**" means a work, such as a periodical issue, anthology or encyclopedia, in which the Materials in their entirety in unmodified form, along with a number of other contributions, constituting separate and independent works in themselves, are assembled into a collective whole; "**CRC License**" means the Creative Commons Attribution-Non Commercial-No Derivs 3.0 Unported Agreement, the terms and conditions of which can be found at: <http://creativecommons.org/licenses/by-nc-nd/3.0/legalcode>; "**Derivative Work**" means a work based upon the Materials or upon the Materials and other pre-existing works, such as a translation, musical arrangement, dramatization, fictionalization, motion picture version, sound recording, art reproduction, abridgment, condensation, or any other form in which the Materials may be recast, transformed, or adapted; "**Institution**" means the institution, listed on the last page of this Agreement, by which the Author was employed at the time of the creation of the Materials; "**JoVE**" means MyJoVE Corporation, a Massachusetts corporation and the publisher of The Journal of Visualized Experiments; "**Materials**" means the Article and / or the Video; "**Parties**" means the Author and JoVE; "**Video**" means any video(s) made by the Author, alone or in conjunction with any other parties, or by JoVE or its affiliates or agents, individually or in collaboration with the Author or any other parties, incorporating all or any portion

of the Article, and in which the Author may or may not appear.

2. **Background.** The Author, who is the author of the Article, in order to ensure the dissemination and protection of the Article, desires to have the JoVE publish the Article and create and transmit videos based on the Article. In furtherance of such goals, the Parties desire to memorialize in this Agreement the respective rights of each Party in and to the Article and the Video.

3. **Grant of Rights in Article.** In consideration of JoVE agreeing to publish the Article, the Author hereby grants to JoVE, subject to **Sections 4** and **7** below, the exclusive, royalty-free, perpetual (for the full term of copyright in the Article, including any extensions thereto) license (a) to publish, reproduce, distribute, display and store the Article in all forms, formats and media whether now known or hereafter developed (including without limitation in print, digital and electronic form) throughout the world, (b) to translate the Article into other languages, create adaptations, summaries or extracts of the Article or other Derivative Works (including, without limitation, the Video) or Collective Works based on all or any portion of the Article and exercise all of the rights set forth in (a) above in such translations, adaptations, summaries, extracts, Derivative Works or Collective Works and (c) to license others to do any or all of the above. The foregoing rights may be exercised in all media and formats, whether now known or hereafter devised, and include the right to make such modifications as are technically necessary to exercise the rights in other media and formats. If the "Open Access" box has been checked in **Item 1** above, JoVE and the Author hereby grant to the public all such rights in the Article as provided in, but subject to all limitations and requirements set forth in, the CRC License.

ARTICLE AND VIDEO LICENSE AGREEMENT

4. **Retention of Rights in Article.** Notwithstanding the exclusive license granted to JoVE in **Section 3** above, the Author shall, with respect to the Article, retain the non-exclusive right to use all or part of the Article for the non-commercial purpose of giving lectures, presentations or teaching classes, and to post a copy of the Article on the Institution's website or the Author's personal website, in each case provided that a link to the Article on the JoVE website is provided and notice of JoVE's copyright in the Article is included. All non-copyright intellectual property rights in and to the Article, such as patent rights, shall remain with the Author.

5. **Grant of Rights in Video – Standard Access.** This **Section 5** applies if the "Standard Access" box has been checked in **Item 1** above or if no box has been checked in **Item 1** above. In consideration of JoVE agreeing to produce, display or otherwise assist with the Video, the Author hereby acknowledges and agrees that, Subject to **Section 7** below, JoVE is and shall be the sole and exclusive owner of all rights of any nature, including, without limitation, all copyrights, in and to the Video. To the extent that, by law, the Author is deemed, now or at any time in the future, to have any rights of any nature in or to the Video, the Author hereby disclaims all such rights and transfers all such rights to JoVE.

6. **Grant of Rights in Video – Open Access.** This **Section 6** applies only if the "Open Access" box has been checked in **Item 1** above. In consideration of JoVE agreeing to produce, display or otherwise assist with the Video, the Author hereby grants to JoVE, subject to **Section 7** below, the exclusive, royalty-free, perpetual (for the full term of copyright in the Article, including any extensions thereto) license (a) to publish, reproduce, distribute, display and store the Video in all forms, formats and media whether now known or hereafter developed (including without limitation in print, digital and electronic form) throughout the world, (b) to translate the Video into other languages, create adaptations, summaries or extracts of the Video or other Derivative Works or Collective Works based on all or any portion of the Video and exercise all of the rights set forth in (a) above in such translations, adaptations, summaries, extracts, Derivative Works or Collective Works and (c) to license others to do any or all of the above. The foregoing rights may be exercised in all media and formats, whether now known or hereafter devised, and include the right to make such modifications as are technically necessary to exercise the rights in other media and formats. For any Video to which this **Section 6** is applicable, JoVE and the Author hereby grant to the public all such rights in the Video as provided in, but subject to all limitations and requirements set forth in, the CRC License.

7. **Government Employees.** If the Author is a United States government employee and the Article was prepared in the course of his or her duties as a United States government employee, as indicated in **Item 2** above, and any of the licenses or grants granted by the Author hereunder exceed the scope of the 17 U.S.C. 403, then the rights granted hereunder shall be limited to the maximum

rights permitted under such statute. In such case, all provisions contained herein that are not in conflict with such statute shall remain in full force and effect, and all provisions contained herein that do so conflict shall be deemed to be amended so as to provide to JoVE the maximum rights permissible within such statute.

8. **Protection of the Work.** The Author(s) authorize JoVE to take steps in the Author(s) name and on their behalf if JoVE believes some third party could be infringing or might infringe the copyright of either the Author's Article and/or Video.

9. **Likeness, Privacy, Personality.** The Author hereby grants JoVE the right to use the Author's name, voice, likeness, picture, photograph, image, biography and performance in any way, commercial or otherwise, in connection with the Materials and the sale, promotion and distribution thereof. The Author hereby waives any and all rights he or she may have, relating to his or her appearance in the Video or otherwise relating to the Materials, under all applicable privacy, likeness, personality or similar laws.

10. **Author Warranties.** The Author represents and warrants that the Article is original, that it has not been published, that the copyright interest is owned by the Author (or, if more than one author is listed at the beginning of this Agreement, by such authors collectively) and has not been assigned, licensed, or otherwise transferred to any other party. The Author represents and warrants that the author(s) listed at the top of this Agreement are the only authors of the Materials. If more than one author is listed at the top of this Agreement and if any such author has not entered into a separate Article and Video License Agreement with JoVE relating to the Materials, the Author represents and warrants that the Author has been authorized by each of the other such authors to execute this Agreement on his or her behalf and to bind him or her with respect to the terms of this Agreement as if each of them had been a party hereto as an Author. The Author warrants that the use, reproduction, distribution, public or private performance or display, and/or modification of all or any portion of the Materials does not and will not violate, infringe and/or misappropriate the patent, trademark, intellectual property or other rights of any third party. The Author represents and warrants that it has and will continue to comply with all government, institutional and other regulations, including, without limitation all institutional, laboratory, hospital, ethical, human and animal treatment, privacy, and all other rules, regulations, laws, procedures or guidelines, applicable to the Materials, and that all research involving human and animal subjects has been approved by the Author's relevant institutional review board.

11. **JoVE Discretion.** If the Author requests the assistance of JoVE in producing the Video in the Author's facility, the Author shall ensure that the presence of JoVE employees, agents or independent contractors is in accordance with the relevant regulations of the Author's institution. If more than one author is listed at the beginning of this Agreement, JoVE may, in its sole

ARTICLE AND VIDEO LICENSE AGREEMENT

discretion, elect not take any action with respect to the Article until such time as it has received complete, executed Article and Video License Agreements from each such author. JoVE reserves the right, in its absolute and sole discretion and without giving any reason therefore, to accept or decline any work submitted to JoVE. JoVE and its employees, agents and independent contractors shall have full, unfettered access to the facilities of the Author or of the Author's institution as necessary to make the Video, whether actually published or not. JoVE has sole discretion as to the method of making and publishing the Materials, including, without limitation, to all decisions regarding editing, lighting, filming, timing of publication, if any, length, quality, content and the like.

12. **Indemnification.** The Author agrees to indemnify JoVE and/or its successors and assigns from and against any and all claims, costs, and expenses, including attorney's fees, arising out of any breach of any warranty or other representations contained herein. The Author further agrees to indemnify and hold harmless JoVE from and against any and all claims, costs, and expenses, including attorney's fees, resulting from the breach by the Author of any representation or warranty contained herein or from allegations or instances of violation of intellectual property rights, damage to the Author's or the Author's institution's facilities, fraud, libel, defamation, research, equipment, experiments, property damage, personal injury, violations of institutional, laboratory, hospital, ethical, human and animal treatment, privacy or other rules, regulations, laws, procedures or guidelines, liabilities and other losses or damages related in any way to the submission of work to JoVE, making of videos by JoVE, or publication in JoVE or elsewhere by JoVE. The Author shall be responsible for, and shall hold JoVE harmless from, damages caused by lack of sterilization, lack of cleanliness or by contamination due to

the making of a video by JoVE its employees, agents or independent contractors. All sterilization, cleanliness or decontamination procedures shall be solely the responsibility of the Author and shall be undertaken at the Author's expense. All indemnifications provided herein shall include JoVE's attorney's fees and costs related to said losses or damages. Such indemnification and holding harmless shall include such losses or damages incurred by, or in connection with, acts or omissions of JoVE, its employees, agents or independent contractors.

13. **Fees.** To cover the cost incurred for publication, JoVE must receive payment before production and publication the Materials. Payment is due in 21 days of invoice. Should the Materials not be published due to an editorial or production decision, these funds will be returned to the Author. Withdrawal by the Author of any submitted Materials after final peer review approval will result in a US\$1,200 fee to cover pre-production expenses incurred by JoVE. If payment is not received by the completion of filming, production and publication of the Materials will be suspended until payment is received.

14. **Transfer, Governing Law.** This Agreement may be assigned by JoVE and shall inure to the benefits of any of JoVE's successors and assignees. This Agreement shall be governed and construed by the internal laws of the Commonwealth of Massachusetts without giving effect to any conflict of law provision thereunder. This Agreement may be executed in counterparts, each of which shall be deemed an original, but all of which together shall be deemed to be one and the same agreement. A signed copy of this Agreement delivered by facsimile, e-mail or other means of electronic transmission shall be deemed to have the same legal effect as delivery of an original signed copy of this Agreement.

A signed copy of this document must be sent with all new submissions. Only one Agreement is required per submission.

CORRESPONDING AUTHOR

Name:

VOJTECH GABRIEL

Department:

BIOMEDICAL SCIENCES

Institution:

IOWA STATE UNIVERSITY

Title:

DVM

Signature:

[Handwritten Signature]

Date:

10/29/2021

Please submit a **signed** and **dated** copy of this license by one of the following three methods:

1. Upload an electronic version on the JoVE submission site
2. Fax the document to +1.866.381.2236
3. Mail the document to JoVE / Attn: JoVE Editorial / 1 Alewife Center #200 / Cambridge, MA 02140