

# Journal of Visualized Experiments

## Analyses of actin dynamics, clutch coupling and traction force for growth cone advance --Manuscript Draft--

Article Type:	Invited Methods Article - JoVE Produced Video
Manuscript Number:	JoVE63227R1
Full Title:	Analyses of actin dynamics, clutch coupling and traction force for growth cone advance
Corresponding Author:	Naoyuki Inagaki Nara Institute of Science and Technology: Nara Sentan Kagaku Gijutsu Daigakuin Daigaku Ikoma, Nara JAPAN
Corresponding Author's Institution:	Nara Institute of Science and Technology: Nara Sentan Kagaku Gijutsu Daigakuin Daigaku
Corresponding Author E-Mail:	ninagaki@bs.naist.jp
Order of Authors:	Takunori Minegishi Ryosuke Fujikawa Ria Fajarwati Kastian Yuichi Sakumura Naoyuki Inagaki
Additional Information:	
Question	Response
Please specify the section of the submitted manuscript.	Neuroscience
Please indicate whether this article will be Standard Access or Open Access.	Open Access (\$3900)
Please indicate the <b>city, state/province, and country</b> where this article will be <b>filmed</b> . Please do not use abbreviations.	Ikoma, Nara, Japan
Please confirm that you have read and agree to the terms and conditions of the author license agreement that applies below:	I agree to the <a href="#">Author License Agreement</a>
Please confirm that you have read and agree to the terms and conditions of the video release that applies below:	I agree to the <a href="#">Video Release</a>
Please provide any comments to the journal here.	

**TITLE:**

Analyses of Actin Dynamics, Clutch Coupling and Traction Force for Growth Cone Advance

**AUTHORS AND AFFILIATIONS:**

Takunori Minegishi<sup>1\*</sup>, Ryosuke Fujikawa<sup>2</sup>, Ria Fajarwati Kastian<sup>1</sup>, Yuichi Sakumura<sup>2</sup>, Naoyuki Inagaki<sup>1\*</sup>

<sup>1</sup>Laboratory of Systems Neurobiology and Medicine, Division of Biological Science, Nara Institute of Science and Technology, Ikoma 630-0192, Nara, Japan.

<sup>2</sup>Laboratory of Data-Driven Biology, Division of Biological Science, Nara Institute of Science and Technology, Ikoma 630-0192, Nara, Japan.

Email addresses of co-authors:

Takunori Minegishi (t-minegishi@bs.naist.jp)

Ryosuke Fujikawa (fujikawa.ryosuke.fj5@bs.naist.jp)

Ria Fajarwati Kastian (ria\_fajarwati.kastian.re3@bs.naist.jp)

Yuichi Sakumura (saku@bs.naist.jp)

Naoyuki Inagaki (ninagaki@bs.naist.jp)

\*Corresponding authors:

Takunori Minegishi (t-minegishi@bs.naist.jp)

Naoyuki Inagaki (ninagaki@bs.naist.jp)

**KEYWORDS:**

growth cone, actin retrograde flow, clutch molecule, cell adhesion molecule, single speckle imaging, traction force microscopy, neuronal migration, axon guidance.

**SUMMARY:**

To advance, growth cones must exert traction forces against the external environment. The generation of traction forces is dependent on actin dynamics and clutch coupling. The present study describes methods for analyzing actin dynamics, clutch coupling and traction forces for growth cone advance.

**ABSTRACT:**

To establish functional networks, neurons must migrate to their appropriate destinations and then extend axons toward their target cells. These processes depend on the advances of growth cones that located at the tips of neurites. Axonal growth cones generate driving forces by sensing their local microenvironment and modulating cytoskeletal dynamics and actin-adhesion coupling (clutch coupling). Decades of research have led to the identification of guidance molecules, their receptors, and downstream signaling cascades for regulating neuronal migration and axonal guidance; however, the molecular machineries required for generating forces to drive growth cone advance and navigation are just beginning to be elucidated. At the leading edge of neuronal growth cones, actin filaments undergo retrograde flow, which is powered by actin polymerization and actomyosin contraction. A clutch coupling between F-actin retrograde flow and adhesive

substrate generates traction forces for growth cone advance. The present study describes a detailed protocol for monitoring F-actin retrograde flow by single speckle imaging. Importantly, when combined with an F-actin marker Lifeact, this technique can quantify 1) the F-actin polymerization rate and 2) the clutch coupling efficiency between F-actin retrograde flow and the adhesive substrate. Both are critical variables for generating forces for growth cone advance and navigation. In addition, the present study describes a detailed protocol of traction force microscopy, which can quantify 3) traction force generated by growth cones. Thus, by coupling the analyses of single speckle imaging and traction force microscopy, investigators can monitor the molecular mechanics underlying growth cone advance and navigation.

## INTRODUCTION:

In the developing vertebrate brain, neurons undergo elaborately organized migrations and project axons toward appropriate synaptic partners to establish functional neuronal networks<sup>1-3</sup>. Growth cones, which are sensory and motile structures located at the tip of neurites, determine the speed and direction of neuronal migration and axon outgrowth<sup>3-5</sup>. Since neurons are surrounded by tightly packed environments, growth cones must exert forces against their environment to move forward<sup>6,7</sup>. To understand the mechanisms underlying neuronal migration and axonal guidance, analyses of the molecular mechanics for growth cone advance are essential.

Decades of analysis have revealed that traction force to drive growth cone advance is generated by the 'clutch' mechanism; this mechanism is thought to function not only in the axonal growth cone but also in the leading process growth cone of migrating neurons<sup>8-12</sup>. Namely, actin filaments (F-actins) in growth cones polymerize at the leading edge and depolymerize proximally, pushing out the leading-edge membrane<sup>13-15</sup>. The resultant force, in conjunction with actomyosin contraction, induces rearward movement of F-actins called retrograde flow<sup>7,11,16-21</sup>. Clutch- and cell adhesion molecules mediate mechanical coupling between F-actin retrograde flow and the adhesive substrate and transmit the force of F-actin flow onto the substrate, thereby generating traction force for growth cone advance<sup>7-9,11,12,22</sup>. Concurrently, the actin-substrate coupling reduces the F-actin flow velocity and converts actin polymerization into the force to protrude the leading-edge membrane<sup>9,10</sup>.

Axonal growth cones sense local chemical cues and transduce them into a directional driving force for growth cone navigation<sup>3,23-25</sup>. For example, an axon guidance molecule netrin-1 stimulates its receptor deleted in colorectal cancer (DCC), and activates the Rho guanosine triphosphate (GTP)-binding proteins cell division control protein 42 (Cdc42) and Ras-related C3 botulinum toxin substrate 1 (Rac1), and their downstream kinase p21-activated kinase 1 (Pak1)<sup>26</sup>. Cdc42 and Rac1 promote 1) actin polymerization, and Pak1 phosphorylates a clutch molecule shootin1<sup>22,26</sup>. Shootin1 interacts with F-actin retrograde flow via an actin-binding protein cortactin<sup>27</sup>. Shootin1 also interacts with L1 cell adhesion molecule (L1-CAM)<sup>20,24</sup>. Shootin1 phosphorylation increases the binding affinities for cortactin and L1-CAM, and enhances shootin1-mediated 2) clutch coupling<sup>24,27</sup>. Within the growth cone, asymmetrical activations of actin polymerization and clutch coupling increase 3) traction force on the side of the netrin-1 source, thereby generating directional driving force for growth cone turning (**Figure 1**)<sup>24</sup>. Intensive research over the last few decades with respect to neuronal migration and axon

guidance has enhanced the understanding of guidance molecules, their receptors, and associated downstream signaling cascades<sup>2,10,28–30</sup>. However, the molecular machineries to generate forces for growth cone advance are just beginning to be elucidated; this may be attributed to the limited usage of the protocols for mechanobiological analyses.

The present study describes a detailed protocol for monitoring F-actin retrograde flow by single speckle imaging<sup>16,18</sup>. Monitoring of F-actin retrograde flow has been extensively performed using super-resolution microscopy, spinning-disk confocal microscopy and total interference reflection fluorescence (TIRF) microscopy<sup>25,31–38</sup>. The protocol in the present study, however, uses a standard epifluorescence microscope and is thus readily adoptable<sup>11,16,18,20,22–24,27,39–42</sup>. Applying an F-actin-specific probe Lifeact<sup>43</sup> to single speckle imaging allows for quantifications of the actin polymerization rate and the clutch coupling efficiency between F-actin retrograde flow and the adhesive substrate<sup>39,42</sup>. The present study further describes a detailed protocol of traction force microscopy using a fluorescent bead-embedded polyacrylamide (PAA) gel<sup>11,22–24,27,39,41,42,44</sup>. This method detects and quantifies traction force under the growth cone by monitoring force-induced bead movements<sup>44,45</sup>. An open-source traction force analysis code is provided, and the method for quantifying traction force during growth cone migration is explained in detail. With the aid of single speckle imaging and traction force microscopy, understanding the molecular mechanics underlying growth cone migration and navigation will be facilitated. These techniques are also applicable for analyzing the molecular mechanics underlying dendritic spine enlargement, which is known to be important in learning and memory<sup>42</sup>.

## **PROTOCOL:**

All experiments using laboratory animals were performed with the Institutional Animal Care and Use Committee of Nara Institute of Science and Technology. Investigators should follow established guidelines established and approved by their institutional and national animal regulatory committees for the care and use of laboratory animals.

### **1. Preparation of solutions and media**

1.1. Prepare the solutions and culture media as summarized in **Supplemental File 1**

### **2. Preparation of poly-D-lysine (PDL)/laminin-coated substrates**

2.1. Coat 14 mm-diameter glass-bottom dishes with 100 µg/mL PDL, dissolved in phosphate-buffered saline (PBS, pH 7.4), and incubate for overnight in a humidified incubator at 37 °C.

NOTE: Do not dry up the glass surfaces after this step

2.2. Remove the PDL solution and pipette 1 mL of PBS on the glass for 10 s three times.

2.3. Coat the dishes with 5 µg/mL laminin, dissolved in PBS, and incubate for overnight in a humidified incubator at 37 °C.

2.4. Remove the laminin solution and pipette 1 mL of PBS on the glass for 10 s three times.

2.5. Remove the PBS and place 0.5 mL of the neurobasal medium on the glass surfaces. Store the dishes in a humidified incubator at 37 °C.

NOTE: PDL/laminin-coated dishes can be stored for 2–3 days in a humidified incubator at 37 °C.

### **3. Dissection and dissociation of the hippocampus**

3.1. Euthanize a pregnant mouse by cervical dislocation.

NOTE: The present study uses commercially available mice (see **Table of Materials**). Investigators should use mice that are bred and humanely treated in a sterilized environment.

3.2. Dissect out embryonic day-16 (E16) mouse embryos, and place them on ice.

3.3. In a laminar flow hood, dissect out the brains with scissors and place them on a sterile 10 cm dish containing 10 mL of ice-cold dissection solution.

3.4. With a dissection stereo microscope, carefully peel away the meninges of the cerebral hemispheres and then dissect out the hippocampi using forceps.

3.5. Transfer the hippocampi into 5 mL of ice-cold digestion solution in a 15 mL tube. Incubate the hippocampi in a water bath for 20 min at 37 °C.

3.6. Remove the digestion solution and add 3 mL of dissection solution.

3.7. Gently pipette the hippocampi four times with a Pasteur pipette.

3.8. Incubate the hippocampi in a water bath for 20 min at 37 °C.

3.9. Transfer the cell suspension into a 50 mL centrifuge tube. Add 3 mL of new dissection solution to the undissociated tissue.

3.10. Repeat Steps 3.7–3.9 until the hippocampi are completely dissociated.

3.11. Remove the floating aggregates of DNA from the cell suspension by swirling and aspirating with a Pasteur pipette. Centrifuge the cell suspension at 180 x g for 20 min at 4 °C.

NOTE: DNA derived from damaged cells will disturb the centrifugation process. If neurons remain in the supernatant, centrifuge the cell suspension again after carefully removing the DNA.

3.12. Equilibrate neurobasal medium containing 10% fetal bovine serum (FBS), penicillin (100

U/mL), and streptomycin (100 µg/mL) in a humidified incubator at 37 °C with 5% CO<sub>2</sub>.

#### **4. Transfection and culturing neurons.**

4.1. Remove the supernatant and add 5 mL of ice-cold PBS into the 50 mL tube. Resuspend the cell pellet by gentle pipetting.

4.2. Transfer 10 µL of the cell suspension into a microcentrifuge tube, add 10 µL of 0.5% trypan blue solution and then count the number of cells with a hemocytometer.

4.3. Centrifuge the cell suspension in the 50 mL tube at 180 x *g* for 20 min at 4 °C.

4.4. In the meantime, aliquot for transfection, 1 µg of pFN21A-HaloTag-actin and 3 µg of pmNeonGreen-N1-Lifeact per 1 x 10<sup>6</sup> cells, into a microcentrifuge tube.

4.5. Following centrifugation, remove the supernatant and add 100 µL of electroporation medium (provided in transfection kit) into the 50 mL tube. Resuspend the cell pellet by pipetting.

4.6. Mix the cell suspension with the aliquoted DNA solution and transfer the mixture to a cuvette (provided in the transfection kit).

NOTE: Since air bubbles disturb electroporation, remove them from the cell suspension.

4.7. Insert the cuvette into the electroporation apparatus (**Table of Materials**), and perform electroporation using program O-005.

4.8. Immediately add 1 mL of the pre-warmed and equilibrated neurobasal medium containing 10% FBS, penicillin (100 U/mL), and streptomycin (100 µg/mL) to the cuvette.

4.9. Transfer the cell suspension to a 15 mL centrifuge tube using a plastic pipette (provided by the transfection kit).

4.10. Transfer 10 µL of the cell suspension into a microtube, add 10 µL of 0.5% trypan blue solution and then count the number of cells with a hemocytometer.

4.11. Take out PDL/laminin-coated glass-bottom dishes from the incubator and remove the neurobasal medium.

4.12. Pipette 0.5 mL of the cell suspension containing 2.0 x 10<sup>5</sup> cells per dish and incubate in a humidified incubator at 37 °C with 5% CO<sub>2</sub> for 3 h.

4.13. Replace the medium with 0.5 mL of neurobasal medium containing 2% B-27 supplement, glutamine (1 mM), penicillin (100 U/mL), and streptomycin (100 µg/mL). Culture the neurons in a humidified incubator for 3 days at 37 °C with 5% CO<sub>2</sub>.

## 5. Single speckle imaging at neuronal growth cones

5.1. On day *in vitro* (DIV) 3, treat the neurons with tetramethyl-rhodamine (TMR) ligand at a dilution of 1:2000 dilution in culture medium. Maintain the neurons for 1 h at 37 °C with 5% CO<sub>2</sub>.

5.2. Wash the TMR ligand three times with pre-warmed PBS.

5.3. Remove the PBS and pipette 0.5 mL of warmed Leibovitz's L-15 medium containing 2% B-27 supplement, glutamine (1 mM), penicillin (100 U/mL), and streptomycin (100 µg/mL).

5.4. Maintain neurons for 1 h at 37 °C.

5.5. Turn on an epifluorescence microscope and set the stage-top incubator to 37 °C.

NOTE: The present protocol uses an epifluorescence microscope equipped with a complementary metal-oxide semiconductor camera, a 100x/1.40 NA oil immersion objective lens, a mercury lamp and an image acquisition software (see **Table of Materials**). Other epifluorescence microscopes with equivalent specifications may also be used for this analysis.

5.6. Place the TMR ligand-treated neurons in the glass-bottom dish on the warmed stage-top incubator.

5.7. Set the image acquisition parameters as follows: exposure time, 500 ms for Lifeact and HaloTag-actin fluorescent channels; binning, 1 x 1 (0.065 µm × 0.065 µm per pixel); time interval, 3 s; duration, 50 frames.

5.8. Select a growth cone that strongly expresses Lifeact and weakly expresses HaloTag-actin.

NOTE: Lifeact expression should be strong enough to visualize growth cone morphology. HaloTag-actin expression should be weak insufficient to be detected (**Figure 2A**). The levels of fluorescent protein expressions can be adjusted by varying the amount of DNA for transfection.

5.9. Close the field of the diaphragm to illuminate a minimum area that includes the growth cone (**Figure 2B**).

NOTE: The illumination of a minimum area reduces the background signal and increases the fluorescence signal to noise (S/N) ratio, enabling the detection of actin speckles (**Figure 2B**). To further increase the S/N ratio, illuminating the growth cone without reducing the light by neutral density filters is recommended.

5.10. Acquire time-lapse images (**Supplemental File 2**). Save as a multichannel time-lapse stack image (tiff format).

**6. Quantifications of F-actin flow velocity and polymerization rate using an image processing and analysis software Fiji**

NOTE: Refer to **Supplemental File 3** for practice data for quantifying F-actin flow velocity and the actin polymerization rate.

6.1. Open the multichannel time-lapse stack image on Fiji.

6.2. Select **Analyze > Set Scale**, and set the pixel size of the images.

6.3. Find an actin speckle that flows retrogradely for a minimum of five time-frames within an F-actin bundle in filopodia or lamellipodia.

6.4. Select **Image > Transform > Rotate**, and adjust the angle of the images so that the F-actin bundle points upward (**Figure 3A**).

6.5. Click on **Rectangle** on the toolbar, and draw a box that includes actin speckles and the tip of the F-actin bundle (**Figure 3B**, 1 and 2).

NOTE: The signals of HaloTag-actin speckles are weak. In addition, Lifeact signals at the distal tips of the growth cone are weak and faint (**Figure 2B**) because the distal tips of the growth cone is thin compared to the proximal part. Investigators should enhance the signals to optimize the quantifications of F-actin flow velocity and polymerization rate (**Figure 3B**). Although the Lifeact signal at the proximal growth cone becomes saturated, this will not disturb the determination of the distal end of F-actins (**Figure 3E**, yellow line).

6.6. Select **Image > Duplicate** and input the five time-frames (**Figure 3B**, 3–5).

6.7. Select **Image > Stacks > Make Montage**, and input the parameters: Columns, 5; Rows, 1; Scale factor, 1.

6.8. Click on **OK**. The image montage will appear on the screen.

6.9. Select **Image > Color > Split Channels**. This separates the two fluorescent channels.

6.10. Quantification of F-actin flow velocity.

6.10.1. Select **Analyze > Set Measurements**, and choose **Area** and **Bounding Rectangle**.

6.10.2. Click on **Oval** on the toolbar, and draw a circle on an actin speckle (**Figure 3C**, 1 and 2).

6.10.3. Select **Image > Overlay > Add Selection**. The circle is overlaid on the image montage (**Figure 3C**, 3, and 4).



NOTE: The color of the overlay can be changed at **Edit > Options > Colors**.

6.10.4. Repeat the overlaying of circles for the remaining speckles (**Figure 3C**, 5).

NOTE: To accurately determine the centers of actin speckle, investigators should overlay circles on the speckles.

6.10.5. Click on **Straight** on the toolbar, and draw a line that links the centers of the circles (**Figure 3D**, 1 and 2).

6.10.6. Select **Analyze > Measure**. The result will appear on the screen (**Figure 3D**, 3).

NOTE: **Height** displayed in the result indicates the translocation distance of the actin speckle during the observation (**Figure 3D**, 3).

6.10.7. Calculate the F-actin flow velocity by dividing the translocation distance by the observation time.

6.11. Quantification of the F-actin polymerization rate.

6.11.1. Draw a line that links the tips of the F-actin bundle (**Figure 3E**, 1).

6.11.2. Select **Analyze > Measure**. The result will appear on the screen (**Figure 3E**, 2).

NOTE: **Height** in the result indicates the extension length of the F-actin bundle during the observation (**Figure 3E**, 2).

6.11.3. Calculate the F-actin extension rate by dividing the extension length by the observation time.

6.11.4. Calculate the F-actin polymerization rate as the sum of the F-actin flow velocity and the extension rate (**Figure 3F**).

## **7. Preparation of a PAA gel for traction force microscopy and neuron cultures**

7.1. Preparation of PAA gels required for traction force microscopy (**Figure 4**)

7.1.1. Pipette 0.5 mL of NaOH (100 mM), dissolved in distilled H<sub>2</sub>O, on 27 mm-diameter glass-bottom dishes, and incubate for 15 min at room temperature (RT).

7.1.2. Add 50  $\mu$ L of 3-aminopropyltrimethoxysilane (APTMS) into NaOH solution on the dishes and mix the solutions by gentle pipetting, and incubate for 15 min at RT.

7.1.3. Wash the glass-bottom dishes with distilled H<sub>2</sub>O, and dry.

7.1.4. Pipette 0.5 mL of 0.5% glutaraldehyde solution, dissolved in PBS, on the APTMS-treated glass-bottom dish, and incubate for 30 min at RT.

7.1.5. Wash the glass-bottom dishes with distilled H<sub>2</sub>O and dry.

7.1.6. Prepare a solution containing distilled H<sub>2</sub>O (412  $\mu$ L), 30% (w/v) acrylamide solution (63  $\mu$ L), 2.5% (w/v) bis-acrylamide solution (6  $\mu$ L) and carboxylate-modified microsphere (fluorescent bead) solution (20  $\mu$ L).

NOTE: Vortex the fluorescent bead solution to dissociate aggregated beads before adding to the acrylamide solution.

7.1.7. Degas the solution in a vacuum chamber for 30 min at RT.

7.1.8. To this solution, add 1  $\mu$ L of 10% (w/v) ammonium persulphate (APS), dissolved in distilled H<sub>2</sub>O, and 1  $\mu$ L of N,N,N',N'-tetramethylethylenediamine (TEMED), and mix by gentle pipetting.

7.1.9. Place a glass coverslip (18 mm diameter) on the cap of a 15 mL centrifuge tube.

7.1.10. Immediately add 25  $\mu$ L of the solution to the coverslip, and then gently place an inverted glass-bottom dish on the coverslip. Allow the acrylamide to polymerize for 1 h at RT.

7.1.11. Apply distilled H<sub>2</sub>O to the coverslip and peel it away from the gel using a syringe needle with a bent tip.

7.1.12. Remove the H<sub>2</sub>O and add sulfo-SANPAH (1 mM), dissolved in PBS, to the gel.

7.1.13. Under sterile conditions, expose the gels to ultraviolet light for 5 min. Wash the gel three times with PBS for 15 min per wash.

7.2. Determination of gel rigidity with a microsphere indentation method (**Figure 5A**)<sup>44</sup>.

7.2.1. Transfer a microsphere which is specified for the diameter and density, to the gel and then place it on the specimen stage of a laser scanning confocal microscope.

7.2.2. Focus on the gel surface and record the z-position (**Figure 5B**).

7.2.3. Similarly, focus on the bottom of the microsphere, and record the z-position (**Figure 5C**).

7.2.4. Calculate the indentation depth as determined by the difference between the z-positions of the gel surface and the bottom of the microsphere.

7.2.5. Calculate Young's modulus  $E$  of the gel by:

$$E = 3(1 - \nu^2)f/4d^{3/2}r^{1/2}$$

where  $f$  is the buoyancy-corrected weight of the microsphere,  $d$  is the indentation depth of the gel,  $r$  is the radius of the microsphere, and  $\nu$  is the Poisson's ratio (whose value is 0.3, as determined previously<sup>46</sup>).

7.3. Coat the gels with PDL and laminin as described in section 2.

7.4. As described in sections 3 and 4, dissect out E16 mouse embryos, dissociate hippocampi, and transfect with 5  $\mu$ g of pEGFP-C1 per  $1.0 \times 10^6$  cells. Seed  $2.0 \times 10^5$  cells on PDL/laminin-coated gels.

NOTE: For traction force analysis, microscopic imaging of fluorescently-labeled cells is necessary for determining the growth cone area.

## 8. Traction force microscopy at neuronal growth cones

8.1. On DIV3, replace the culture medium with 0.5 mL of warmed Leibovitz's L-15 medium containing 2% B-27 supplement, glutamine (1 mM), penicillin (100 U/mL), and streptomycin (100  $\mu$ g/mL). Maintain the neurons for 1 h at 37 °C.

8.2. Turn on a laser scanning confocal microscope and set the stage-top incubator to 37 °C.

NOTE: The present study uses a laser scanning confocal microscope equipped with a 63x/1.2 NA water immersion objective lens and an image acquisition and analysis software (see **Table of Materials**).

8.3. Place the neurons in the glass-bottom dish on the pre-warmed stage-top incubator.

8.4. Set the image acquisition parameters as follows: scan size,  $512 \times 512$  pixels; scan area, 1.5–3x zoom; scan speed, ~1 s per frame; laser wavelength, 561 nm (the excitation wavelength for the fluorescent beads) and 488 nm (the excitation wavelength for enhanced green fluorescent protein (EGFP)); time interval, 3 s; duration, 50 frames.

8.5. To visualize the growth cone morphology, select a growth cone that strongly expresses EGFP.

8.6. Focus on the gel surface and acquire time-lapse images (**Figure 6A** and **Supplemental File 4**).

NOTE: For traction analysis, use two fluorescent channels (for fluorescent beads and EGFP) and a bright-field channel (capturing differential interference contrast (DIC) or phase-contrast images is recommended).

8.7. Use an image processing software (e.g., Fiji) to produce single-channel time-lapse RGB image

stacks and save these images as tiff files.

NOTE: It is critical that investigators also save the raw data.

8.8. Apply 100  $\mu$ L of 10% (w/v) sodium dodecyl sulfate (SDS), dissolved in distilled H<sub>2</sub>O, to the glass-bottom dish to relax the gel substrate by releasing neurons from the substrate. Incubate the dish for 5 min at 37°C to stabilize the temperature.

NOTE: The image of the beads in an unstrained substrate is used to reference the original bead positions during traction force analysis (**Figure 6C**). Application of SDS solution alters the xyz-positions due to thermal change in the incubator and relaxation of the cell-induced deformation. Investigators, therefore, need to correct the focal plane and x–y position.

8.9. Focus on the gel surface, and acquire an image of the beads in the unstrained substrate (**Figure 6B**).

8.10. Produce a single-channel RGB image of the beads in the unstrained substrate, and save this image as a tiff file.

8.11. Correction of the x–y position of the bead image in the unstrained substrate using Fiji

8.11.1. In Fiji, open the bead image in the unstrained substrate and the time-lapse stack image of fluorescent beads.

8.11.2. Select **Image > Stacks > Tools > Concatenate**. A dialogue box will appear on the screen (**Figure 7A, 1**).

8.11.3. Select the bead image in the unstrained substrate and the time-lapse stack image of fluorescent beads in **Image1** and **Image2**, respectively (**Figure 7A, 2**).

8.11.4. Click on **OK**. The bead image in the unstrained substrate is added to the time-lapse stack image (**Figure 7A, 3**).

8.11.5. Using the scroll bar (**Figure 7B, 1, red frame**), display the second frame of the stack image (red arrow).

8.11.6. Select **Plugins > StackReg** (**Figure 7B, 2**). A dialogue box will appear on the screen (**Figure 7B, 3**).

8.11.7. Select **Rigid Body** from the drop-down list (**Figure 7B, 3, red frame**) and click on **OK**. The correction of the x–y position then begins.

8.11.8. Use the scroll bar to display the first frame of the x–y position-corrected stack image.

8.11.9. Select **Image > Duplicate** (Figure 7C, 1). A dialogue box will appear on the screen (Figure 7B, 2).

8.11.10. Input **1** in the **Range**, deselect **Duplicate Stack** (Figure 7C, 2), and click **OK**. The x–y position-corrected bead image in the unstrained substrate will appear on the screen (Figure 7C, 3). Save this image as a tiff file.

## 8.12. Quantification of traction force

NOTE: The method described here for traction force analysis uses MATLAB and two MATLAB toolboxes, 'Image Processing Toolbox' and 'Parallel Computing Toolbox'. Investigators will need to install them prior to the analysis. The traction force analysis code was developed based on MATLAB version 2018a. Therefore, MATLAB version 2018a (or later) must be used for the analysis. The algorithms used for traction force analysis were described previously<sup>22</sup>.

8.12.1. Download the traction force analysis code TFM2021 from **Supplemental File 5**. Open TFM2021 in MATLAB

8.12.2. Open **main.m** in TFM2021 and run it. A graphical user interface (GUI) will appear on the screen (Figure 8A).

8.12.3. Click on **Load Unstrained Substrate Image** and select the x–y position-corrected bead image in unstrained substrate.

8.12.4. Click on **Load Fluorescent Bead Images** and select the time-lapse stack image of beads.

8.12.5. Click on **Load Bright-Field Images** and select the time-lapse stack image of bright-field.

8.12.6. Click on **Load GFP Images** and select the time-lapse stack image of EGFP.

8.12.7. Select **GFP** from the drop-down list on the GUI (Figure 8A, red box).

8.12.8. Click on **ROI** to specify the rectangle region of interest (ROI), including the growth cone, by clicking two points on the cell image displayed on the GUI (Figure 8B).

8.12.9. Click on the **Save** button on the GUI (Figure 8A, red arrow). The selected stack images, together with the ROI, will be saved in a .mat file (MATLAB format file).

8.12.10. Click on **Spot Detect**. A dialogue box will appear on the screen.

8.12.11. Input a value (usually 50–150) on the dialogue box to determine a threshold for bead detection. Clicking **OK** starts the calculation.

8.12.12. After finishing the calculation, click on **Plot track** to enlarge the region selected at

step 8.12.8 and display the detected beads as white dots (**Figure 8C, 1**).

NOTE: Confirm whether bead detection (white dots) overlaps with the fluorescent beads. Bead detection may also detect background noise. To reduce this external interference, change the threshold value at **Spot detect**. In addition, manually select the correct dots at step 8.12.13.

8.12.13. Click on **Select Beads**, and demarcate a polygonal region that includes the correct dots under the growth cone. Press **Enter** on the keyboard. The white dots within the polygonal region will change into a red color (**Figure 8C, 2**).

8.12.14. Click on **Estimate Force** on the GUI. Then, input values for the following parameters: pixel size,  $\mu\text{m}/\text{pixel}$ ; Young's modulus, the value calculated at Step 7.2.5; Poisson's ratio, 0.3.

8.12.15. Execute **Estimate Force** to initiate the calculation. The software will save the calculation results in a spreadsheet format file automatically.

NOTE: The spreadsheet shows the x-component, y-component, and force magnitude at every time-frame (**Figure 8D**). Refer to **Supplemental File 6** for practice data for quantifying traction force.

## REPRESENTATIVE RESULTS:

### Single speckle imaging to quantify actin polymerization rate and clutch coupling efficiency

A high Lifeact expression permits F-actin visualization within the growth cone; a low HaloTag-actin expression allows the monitoring of F-actin retrograde flow (**Figure 3, Supplemental File 2**). Tracing of the actin speckles allows measurement of F-actin flow velocity (**Figure 3C,D**). Since the mechanical coupling of F-actin retrograde flow and the adhesive substrate reduces the F-actin flow velocity, the clutch coupling efficiency can be estimated from the velocity. Furthermore, F-actin labeling with Lifeact aids visualization of F-actin extension and is useful for quantifying the actin polymerization rate (**Figure 3E,F**).

### Quantitative analysis of traction force

Strict adherence to the methodology presented here will reveal the movements of fluorescent beads under the growth cone (**Figure 6C, Supplemental File 4**). F-actin retrograde flow onto the substrate generates traction force causing the fluorescent beads to move rearward under the growth cone. The traction force analysis code estimates traction force from fluorescent bead displacement, and expresses the calculated traction force as a force vector. The direction and magnitude of the traction force are determined from the x- and y-components of the force vector (**Figure 8C,D**). The red box in **Figure 8D** represents the x- and y-components of a force vector; **Figure 8C** depicts the corresponding growth cone. In terms of x-y coordinates, the vector points to  $-93.8^\circ$  against the x-axis; this orientation is directed toward the rear of the growth cone (**Figure 8C**). The magnitude of the traction force  $F$  was calculated as follows:

$$F = \sqrt{x^2 + y^2}$$

**FIGURE AND TABLE LEGENDS:**

**Figure 1: A growth cone machinery for force generation and growth cone navigation.** A netrin-1 chemoattractant gradient induces asymmetrical stimulation of its receptor DCC on an axonal growth cone. This activates Rac1 and Cdc42, and their downstream kinase Pak1. Rac1 and Cdc42 promote (1) actin polymerization, whereas Pak1 phosphorylates shootin1, enhancing shootin1-mediated (2) clutch coupling. The asymmetric activation of actin dynamics and the clutch coupling within the growth cone increases (3) traction force on the side of the netrin-1 source, thereby generating a directional driving force for growth cone attraction. The protocols presented here allow for the quantification of the key variables (1)–(3) for growth cone navigation.

**Figure 2: Fluorescence images of a neuronal growth cone under a fully opened and narrowed diaphragm.** The growth cone expresses Lifeact and HaloTag-actin. (A) A high Lifeact expression permits visualization of growth cone morphology. On the other hand, HaloTag-actin expression levels are very low, with dim signals when the diaphragm is fully opened. (B) When the diaphragm is appropriately narrowed, background signals diminish, and single actin speckles appear in the growth cone. Scale bars: 5  $\mu\text{m}$ .

**Figure 3: Steps for quantifying F-actin flow velocity and actin polymerization rate using an image processing and analysis software Fiji.** (A) Adjust the angle of the image for analysis. (1) Find and select an actin speckle (arrowhead) that flows in an F-actin bundle. (2) Select **Image > Transform > Rotate**. (3) Set the angle so that the F-actin bundle is directed upward. (4) The angle of the image will be changed. (B) Demarcate the region, including the actin speckle and the F-actin bundle. (1) Click on **Rectangle** on the toolbar. (2) Delineate a region on the image. The brightness and contrast of the image are increased to allow clear visualization of the actin speckle and the tip of the F-actin bundle. (3) Select **Image > Duplicate**. (4) Input the five time-frames that show actin speckle flow in the F-actin bundle. (5) The selected stack image will appear on the screen. (C) Overlay circles on the actin speckle. (1) Click on **Oval** on the toolbar. (2) Draw a circle on an actin speckle. (3) Select **Image > Overlay > Add Selection**. (4) The circle is overlaid. (5) Repeat overlaying the circles on the remaining actin speckles. (D) Measure the translocation distance of actin speckles during the five time-frames. (1) Click on **Straight** on the toolbar. (2) Draw a line which links the centers of the circles. (3) Select **Analyze > Measure**. The result, indicated by the parameter **Height** (red box), relaying the actin speckle translocation distance. (E) Measure the change in the length of F-actin protrusion during the five time-frames. (1) Draw a line which links the tips of the F-actin protrusion. (2) Select **Analyze > Measure**. The result (red box), **Height**, indicates the extension length of the F-actin bundle. (F) The actin polymerization rate is calculated from the sum of the F-actin flow velocity and the extension rate. Scale bars: 1  $\mu\text{m}$ . See also **Supplemental File 2. Supplemental File 3** assists investigators to practice the methodology described above.

**Figure 4: Steps for the PAA gel preparation.** Please see step 7.1 for a detailed description.

**Figure 5: Determination of PAA gel rigidity.** (A) A microsphere indentation method. When a microsphere is placed on a fluorescent bead-embedded PAA gel, the weight of the microsphere

causes an indentation in the gel. The indentation depth is calculated by subtracting the z-positions of the PAA gel surface from the bottom of the microsphere (**B,C**) Fluorescence images of a PAA gel indented by a microsphere and containing fluorescent beads. A laser scanning confocal microscope was used to capture images of the gel surface (**B**) and the bottom of the microsphere (**C**). Signals from the fluorescing beads are not visible at the gel surface in the indented region (**B**, circle). They can, however, be observed at the bottom of the microsphere. Scale bars: 50  $\mu\text{m}$ .

**Figure 6: Force mapping of a neuronal growth cone. (A–C)** Fluorescence images of beads embedded in a PAA gel and a neural growth cone visualized with EGFP. Following the acquisition of time-lapse images (**A**), the neuron was released from the gel substrate by applying SDS solution, and an image of the beads in the unstrained substrate was captured (**B**). (**C**) The image of the beads in the unstrained substrate shows the beads in their original (green) and displaced (red) positions. The EGFP signal of the growth cone is shown in blue. Kymographs (right) show the movements of beads at 3 s intervals for a duration of 147 s, indicated by the arrows in boxed areas 1 and 2. The bead in area 2 is a reference bead. Scale bars: 2  $\mu\text{m}$  for (**A**), (**B**) and (**C**, left), and 1  $\mu\text{m}$  for (**C**, middle). See also **Supplemental File 4**.

**Figure 7: Steps for the correcting x–y position of the bead image in unstrained substrate using Fiji. (A)** Concatenate the bead image in unstrained substrate with the time-lapse stack image of fluorescent beads. (1) Select **Image > Stacks > Tools > Concatenate**. (2) Select the beads image in unstrained substrate and the time-lapse stack image of fluorescent beads in **Image1** and **Image2**, respectively. Click **OK**. (3) The bead image in the unstrained substrate is added to the time-lapse stack image. (**B**) Correct the x–y position of the fluorescent bead image. (1) Use the scroll bar (red frame) to select the second frame (red arrow) in the image stack. (2) Select **Plugins > StackReg**. (3) Select **Rigid Body** from the drop-down list (red frame) and click on **OK**. The correction of the x–y position will begin. (**C**) Save the x–y position-corrected bead image. After selecting the first frame of the x–y position-corrected stack image, (1) select **Image > Duplicate**. (2) input **1** into the **Range** and deselect **Duplicate stack**. Then click on **OK**. (3) the x–y position-corrected bead image in the unstrained substrate will appear on the screen. Save this image as a tiff file. **Supplemental File 6** assists investigators to practice the methodology described above.

**Figure 8: Analysis of traction force under a neuronal growth cone using an open-source traction force analysis code. (A)** GUI for analyzing traction force. Time-lapse images selected on the GUI can be confirmed from the drop-down list and with the slider indicated (red box). (**B**) Select a region that includes the growth cone. (1) Click on **ROI** on the GUI. With the mouse cursor, specify two points (arrowheads) on the cell image. (2) A red box will appear on the cell image. Two clicks determine the locations of two corners. (**C**) Select the detected beads (white dots) under the growth cone. (1) On the GUI, click on **Select Beads**, and demarcate a polygonal region that includes the growth cone by clicking. Press the **Enter** key. (2) The white dots within the polygonal region will change into a red color. (**D**) Calculated results of the direction and magnitude of the traction force. The red box in the spreadsheet represents the x- and y-components of the force vector, estimated by traction force analysis. On the x–y coordinate in the right panel, the force vector generated by the growth cone points to  $-93.8^\circ$  against the x-axis; this orientation is



directed toward the rear of the growth cone in (C). **Supplemental File 6** assists investigators to practice the methodology described above.

**Supplemental File 1: Recipes of solutions and media used in this study.** See text for detailed usage.

**Supplemental File 2: Fluorescence imaging of Lifeact and fluorescent speckle imaging of HaloTag-actin in a nerve growth cone.** Lifeact (green) and HaloTag-actin (magenta). Images were acquired every 3 s for a total duration of 147 s. Scale bar: 2  $\mu$ m. See also **Figure 3**.

**Supplemental File 3: Practice data for quantifying F-actin flow velocity and the actin polymerization rate.** A multichannel time-lapse stack image of Lifeact (green) and HaloTag-actin (magenta). See also **Figure 3**.

**Supplemental File 4: A force-mapping video detecting traction force at a neuronal growth cone.** The original (green) and displaced (red) positions of the beads. The EGFP signal in the growth cone is shown in blue. Images were acquired every 3 s for 147 s. Scale bar: 2  $\mu$ m. See also **Figure 6**.

**Supplemental File 5: Traction force analysis code.** Please see Step 8.12 for detailed usage.

**Supplemental File 6: Practice data for quantifying traction force.** A single-channel RGB image of the beads in unstrained substrate and single-channel time-lapse stack RGB images of fluorescent beads under a growth cone, EGFP, and bright-field. See also **Figures 7 and 8**.

## DISCUSSION:

The protocols described in this study use commercially available materials and microscopy equipment routinely found in all the laboratories, institutes, and universities. Therefore, investigators can easily adopt the present single speckle imaging and traction force microscopy in their studies.

The speckle imaging can analyze actin polymerization and clutch coupling. In addition, speckle imaging can monitor the retrograde flow of clutch molecules such as shootin1 and cortactin, which interact with F-actin retrograde flow. By using a TIRF microscope, the retrograde flow of the cell adhesion molecule L1-CAM can also be monitored<sup>23,41</sup>; L1-CAM undergoes grip and slip behaviors that reflect the clutch coupling efficiency<sup>23,41</sup>. Although the present study employs the TMR-HaloTag system for speckle imaging, other fluorescent proteins, such as EGFP and monomeric red fluorescent protein, are also available in the analysis<sup>16,18,20,23,24,27,39</sup>. The essentials for visualizing actin speckles are a low expression level of fluorescent actin and the illumination of a minimum area (**Figure 2**). In this protocol, Lifeact and HaloTag-actin signals are sequentially acquired. Because actin retrograde flow is relatively slow ( $4.5 \pm 0.1 \mu\text{m}/\text{min}$ )<sup>24</sup>, analysis of F-actin retrograde flow and actin polymerization are unaffected by sequential image acquisition of different fluorescent channels ( $\sim 1$  s interval). Lifeact is a widely-used F-actin marker, but can

compete with actin binding proteins<sup>47</sup>. Of further importance, Lifeact can alter actin dynamics, thereby affecting F-actin structures and the cell morphology<sup>47–49</sup>.

Traction force microscopy can detect forces to drive growth cone advance. By mounting the neurons within an extracellular matrix, investigators can also analyze forces generated in a semi-3D environment<sup>11</sup>. High-magnification imaging is important for accurate quantification of traction force because growth cones generate weak traction forces<sup>7</sup>. Although other methods with nanopillars or stress-sensitive biosensors are also used to measure traction force<sup>50,51</sup>, PAA gel-based method is highly adaptable and allows for the adjustment of substrate rigidity by varying the concentrations of acrylamide and bis-acrylamide<sup>41,44,52</sup>. In this protocol, the PAA gel is prepared at a final concentration of 3.75% acrylamide and 0.03% bis-acrylamide; Young's modulus is ~270 Pa<sup>22</sup> and this stiffness is within the range of brain tissue (100–10,000 Pa)<sup>53–55</sup>. Due to the thickness of the PAA gel (~100 µm), this method is limited to the use of high-magnification lenses during microscopy. To obtain high-magnification images, investigators should use the zoom function in a laser scanning confocal microscope.

In conclusion, the present speckle imaging and traction force microscopy enable quantitative analyses of the key events in force generations. This information will be invaluable for improving understanding of the mechanisms that underlie growth cone advancement and navigation.

#### ACKNOWLEDGMENTS:

This research was supported in part by AMED under grant number 21gm0810011h0005 (N.I. and Y.S.), JSPS KAKENHI (JP19H03223, N.I.) and JSPS Grants-in-Aid for Early-Career Scientists (JP19K16258, T.M.), the Osaka Medical Research Foundation for Incurable Diseases (T.M.), and NAIST Next Generation Interdisciplinary Research Project (Y.S.).

#### DISCLOSURES:

The authors have nothing to disclose.

#### REFERENCES:

- 1 TessierLavigne, M., Goodman, C. S. The molecular biology of axon guidance. *Science*. **274** 1123–1133 (1996).
- 2 Marin, O., Valiente, M., Ge, X., Tsai, L. H. Guiding neuronal cell migrations. *Cold Spring Harbor Perspectives in Biology*. **2**, a001834 (2010).
- 3 Vitriol, E. A., Zheng, J. Q. Growth cone travel in space and time: the cellular ensemble of cytoskeleton, adhesion, and membrane. *Neuron*. **73** (6), 1068–1081 (2012).
- 4 Cooper, J. A. Cell biology in neuroscience: mechanisms of cell migration in the nervous system. *Journal of Cell Biology*. **202**, 725–734 (2013).
- 5 Dupraz, S. et al. RhoA controls axon extension independent of specification in the developing brain. *Current Biology*. **29**, 3874–3886.e3879 (2019).
- 6 Suter, D. M., Miller, K. E. The emerging role of forces in axonal elongation. *Progress in Neurobiology*. **94**, 91–101 (2011).
- 7 Franze, K. Integrating chemistry and mechanics: the forces driving axon growth. *Annual Review of Cell and Developmental Biology*. **36**, 61–83 (2020).

8 Mitchison, T., Kirschner, M. Cytoskeletal dynamics and nerve growth. *Neuron*. **1**, 761–772  
 (1988).

9 Suter, D. M., Forscher, P. Substrate-cytoskeletal coupling as a mechanism for the  
 regulation of growth cone motility and guidance. *Journal of Neurobiology*. **44**, 97–113 (2000).

10 Lowery, L. A., Van Vactor, D. The trip of the tip: understanding the growth cone machinery.  
*Nature Reviews Molecular Cell Biology*. **10**, 332–343 (2009).

11 Minegishi, T. et al. Shootin1b mediates a mechanical clutch to produce force for neuronal  
 migration. *Cell Reports*. **25**, 624–639 e626 (2018).

12 Minegishi, T., Inagaki, N. Forces to drive neuronal migration steps. *Frontiers in Cell and  
 Developmental Biology*. **8**, 863 (2020).

13 Forscher, P., Smith, S. J. Actions of cytochalasins on the organization of actin filaments  
 and microtubules in a neuronal growth cone. *Journal of Cell Biology*. **107**, 1505–1516, (1988).

14 Suter, D. M., Forscher, P. An emerging link between cytoskeletal dynamics and cell  
 adhesion molecules in growth cone guidance. *Current Opinion in Neurobiology*. **8**, 106–116  
 (1998).

15 Pollard, T. D., Borisy, G. G. Cellular motility driven by assembly and disassembly of actin  
 filaments. *Cell*. **112**, 453–465 (2003).

16 Waterman-Storer, C. M., Desai, A., Bulinski, J. C., Salmon, E. D. Fluorescent speckle  
 microscopy, a method to visualize the dynamics of protein assemblies in living cells. *Current  
 Biology*. **8**, 1227–1230 (1998).

17 Katoh, K., Hammar, K., Smith, P. J., Oldenbourg, R. Birefringence imaging directly reveals  
 architectural dynamics of filamentous actin in living growth cones. *Molecular Biology of the Cell*.  
**10**, 197–210 (1999).

18 Watanabe, N., Mitchison, T. J. Single-molecule speckle analysis of actin filament turnover  
 in lamellipodia. *Science*. **295**, 1083–1086 (2002).

19 Medeiros, N. A., Burnette, D. T., Forscher, P. Myosin II functions in actin-bundle turnover  
 in neuronal growth cones. *Nature Cell Biology*. **8**, 215–226 (2006).

20 Shimada, T. et al. Shootin1 interacts with actin retrograde flow and L1-CAM to promote  
 axon outgrowth. *Journal of Cell Biology*. **181**, 817–829 (2008).

21 He, M., Zhang, Z. H., Guan, C. B., Xia, D., Yuan, X. B. Leading tip drives soma translocation  
 via forward F-actin flow during neuronal migration. *Journal of Neuroscience*. **30**, 10885–10898  
 (2010).

22 Toriyama, M., Kozawa, S., Sakumura, Y., Inagaki, N. Conversion of a signal into forces for  
 axon outgrowth through Pak1-mediated shootin1 phosphorylation. *Current Biology*. **23** 529–534  
 (2013).

23 Abe, K. et al. Grip and slip of L1-CAM on adhesive substrates direct growth cone  
 haptotaxis. *Proceedings of the National Academy of Sciences of the United States of America*. **115**,  
 2764–2769 (2018).

24 Baba, K. et al. Gradient-reading and mechano-effector machinery for netrin-1-induced  
 axon guidance. *Elife*. **7**, e34593 (2018).

25 Nichol, R. I., Hagen, K. M., Lumbard, D. C., Dent, E. W., Gomez, T. M. Guidance of axons by  
 local coupling of retrograde flow to point contact adhesions. *Journal of Neuroscience*. **36**, 2267–  
 2282 (2016).

26 Shekarabi, M. et al. Deleted in colorectal cancer binding netrin-1 mediates cell substrate

adhesion and recruits Cdc42, Rac1, Pak1, and N-WASP into an intracellular signaling complex that promotes growth cone expansion. *Journal of Neuroscience*. **25**, 3132–3141 (2005).

27 Kubo, Y. et al. Shootin1-cortactin interaction mediates signal-force transduction for axon outgrowth. *Journal of Cell Biology*. **210**, 663–676 (2015).

28 Huber, A. B., Kolodkin, A. L., Ginty, D. D., Cloutier, J. F. Signaling at the growth cone: ligand-receptor complexes and the control of axon growth and guidance. *Annual Review of Neuroscience*. **26**, 509–563 (2003).

29 Kolodkin, A. L., Tessier-Lavigne, M. Mechanisms and molecules of neuronal wiring: a primer. *Cold Spring Harbor Perspectives in Biology*. **3**, a001727 (2011).

30 Ayala, R., Shu, T., Tsai, L. H. Trekking across the brain: the journey of neuronal migration. *Cell*. **128**, 29–43 (2007).

31 Tataavarty, V., Kim, E. J., Rodionov, V., Yu, J. Investigating sub-spine actin dynamics in rat hippocampal neurons with super-resolution optical imaging. *PLoS One*. **4**, e7724 (2009).

32 Frost, N. A., Shroff, H., Kong, H., Betzig, E., Blanpied, T. A. Single-molecule discrimination of discrete perisynaptic and distributed sites of actin filament assembly within dendritic spines. *Neuron*. **67**, 86–99 (2010).

33 Chazeau, A. et al. Nanoscale segregation of actin nucleation and elongation factors determines dendritic spine protrusion. *EMBO Journal*. **33**, 2745–2764 (2014).

34 Garcia, M. et al. Two-tiered coupling between flowing actin and immobilized N-cadherin/catenin complexes in neuronal growth cones. *Proceedings of the National Academy of Sciences of the United States of America*. **112**, 6997–7002 (2015).

35 Swaminathan, V. et al. Actin retrograde flow actively aligns and orients ligand-engaged integrins in focal adhesions. *Proceedings of the National Academy of Sciences of the United States of America*. **114**, 10648–10653 (2017).

36 Tsai, T. Y. et al. Efficient front-rear coupling in neutrophil chemotaxis by dynamic myosin II localization. *Developmental Cell*. **49**, 189–205.e186 (2019).

37 Zhang, X. F. et al. Regulation of axon growth by myosin II-dependent mechanocatalysis of cofilin activity. *Journal of Cell Biology*. **218** (7), 2329–2349 (2019).

38 Reversat, A. et al. Cellular locomotion using environmental topography. *Nature*. **582**, 582–585 (2020).

39 Katsuno, H. et al. Actin migration driven by directional assembly and disassembly of membrane-anchored actin filaments. *Cell Reports*. **12**, 648–660 (2015).

40 Urasaki, A. et al. Shootins mediate collective cell migration and organogenesis of the zebrafish posterior lateral line system. *Scientific Reports*. **9**, 12156 (2019).

41 Abe, K. et al. Mechanosensitive axon outgrowth mediated by L1–laminin clutch interface. *Biophysical Journal*. **120**, 3566–3576 (2021).

42 Kastian, R. F. et al. Shootin1a-mediated actin-adhesion coupling generates force to trigger structural plasticity of dendritic spines. *Cell Reports*. **35**, 109130 (2021).

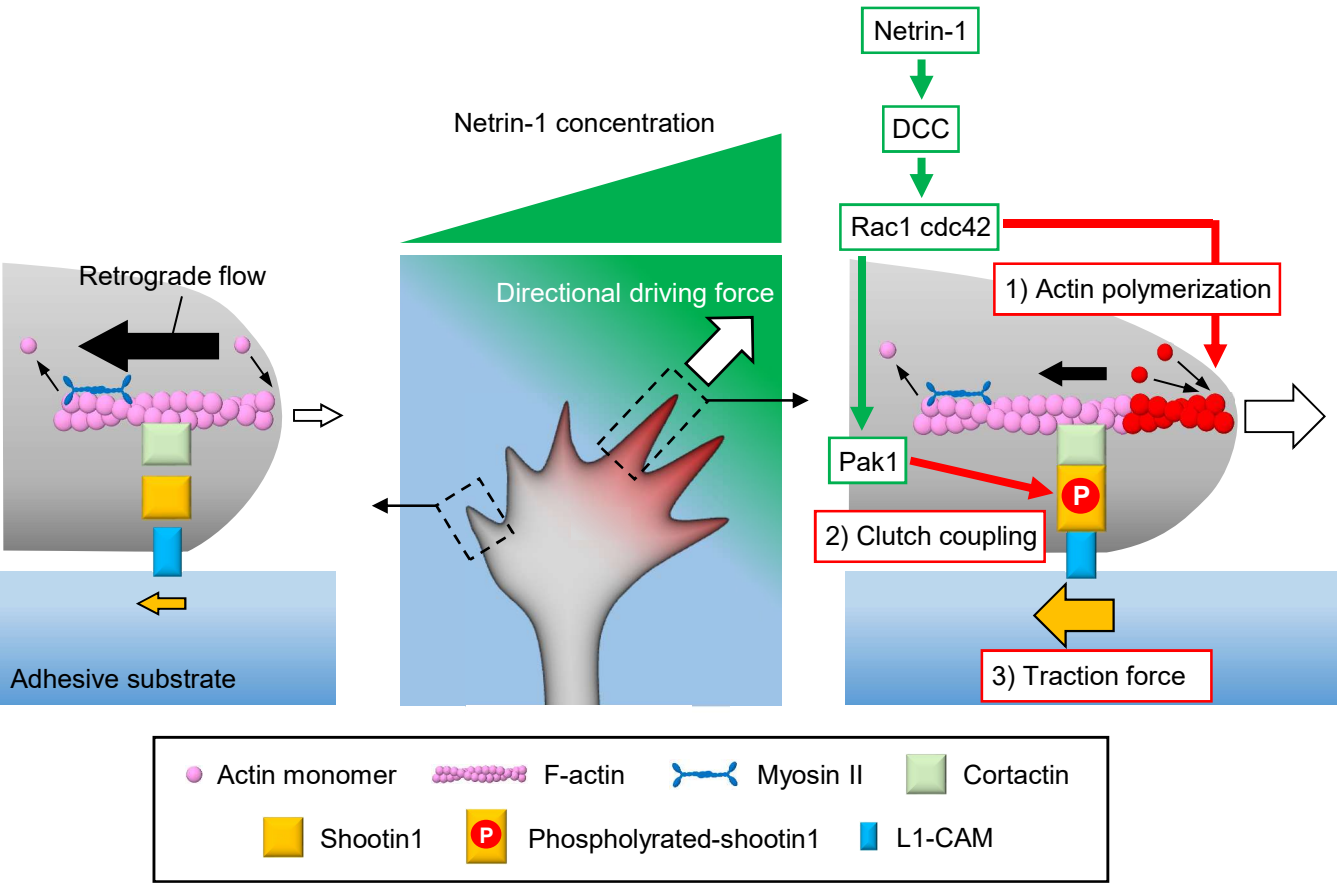
43 Riedl, J. et al. Lifeact: a versatile marker to visualize F-actin. *Nature Methods*. **5**, 605–607 (2008).

44 Chan, C. E., Odde, D. J. Traction dynamics of filopodia on compliant substrates. *Science*. **322**, 1687–1691 (2008).

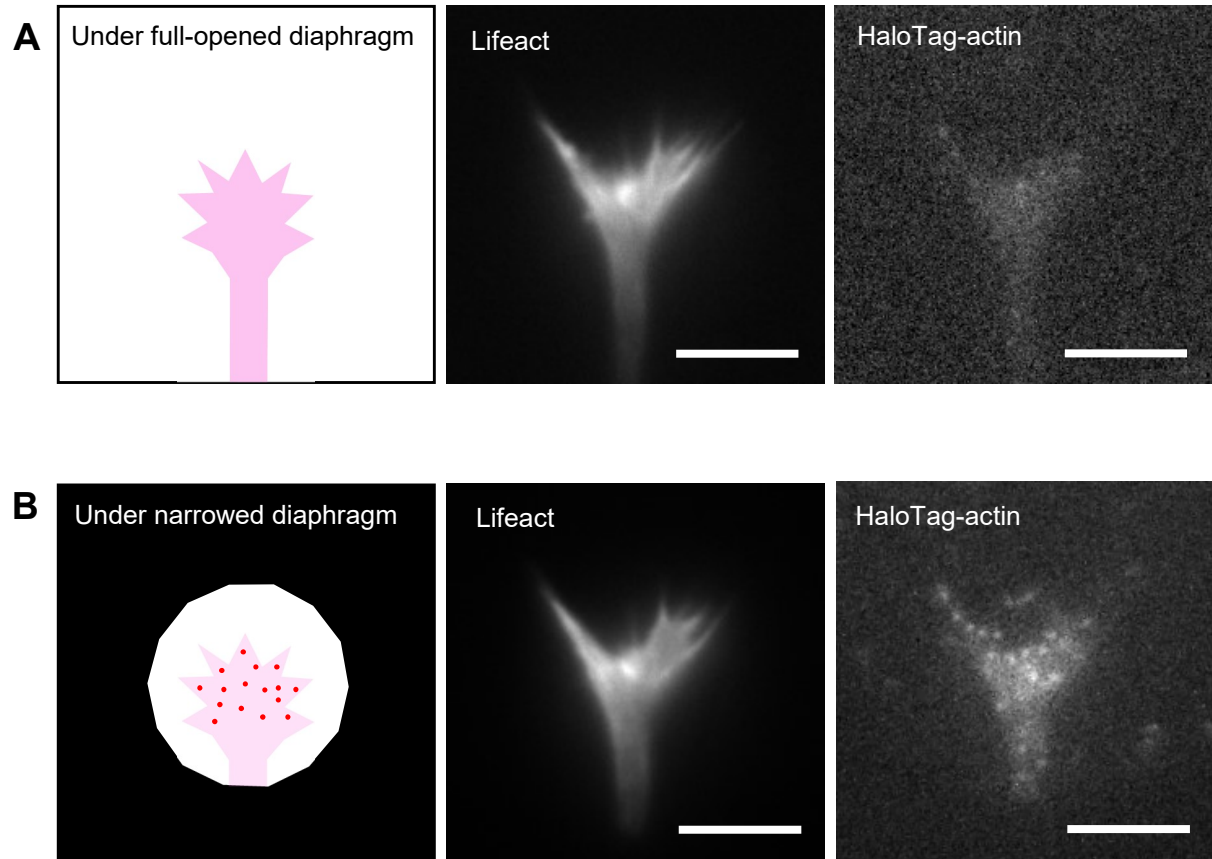
45 Wang, Y. L., Pelham, R. J., Jr. Preparation of a flexible, porous polyacrylamide substrate for mechanical studies of cultured cells. *Methods in Enzymology*. **298**, 489–496 (1998).

- 46 Li, Y., Hu, Z., Li, C. New method for measuring poisson's ratio in polymer gels. *Journal of Applied Polymer Science*. **50**, 1107–1111 (1993).
- 47 Belyy, A., Merino, F., Sitsel, O., Raunser, S. Structure of the Lifeact-F-actin complex. *PLoS Biology*. **18**, e3000925 (2020).
- 48 Flores, L. R., Keeling, M. C., Zhang, X., Sliogeryte, K., Gavara, N. Lifeact-GFP alters F-actin organization, cellular morphology and biophysical behaviour. *Scientific Reports*. **9**, 3241 (2019).
- 49 Kumari, A., Kesarwani, S., Javoor, M. G., Vinothkumar, K. R., Sirajuddin, M. Structural insights into actin filament recognition by commonly used cellular actin markers. *EMBO Journal*. **39**, e104006 (2020).
- 50 du Roure, O. et al. Force mapping in epithelial cell migration. *Proceedings of the National Academy of Sciences of the United States of America*. **102**, 2390–2395 (2005).
- 51 Grashoff, C. et al. Measuring mechanical tension across vinculin reveals regulation of focal adhesion dynamics. *Nature*. **466**, 263–266 (2010).
- 52 Koch, D., Rosoff, W. J., Jiang, J., Geller, H. M., Urbach, J. S. Strength in the periphery: growth cone biomechanics and substrate rigidity response in peripheral and central nervous system neurons. *Biophysical Journal*. **102** (3), 452–460 (2012).
- 53 Barnes, J. M., Przybyla, L., Weaver, V. M. Tissue mechanics regulate brain development, homeostasis and disease. *Journal of Cell Science*. **130**, 71–82 (2017).
- 54 Moore, S. W., Roca-Cusachs, P., Sheetz, M. P. Stretchy proteins on stretchy substrates: the important elements of integrin-mediated rigidity sensing. *Developmental Cell*. **19**, 194–206 (2010).
- 55 Tyler, W. J. The mechanobiology of brain function. *Nature Reviews Neuroscience*. **13**, 867–878 (2012).

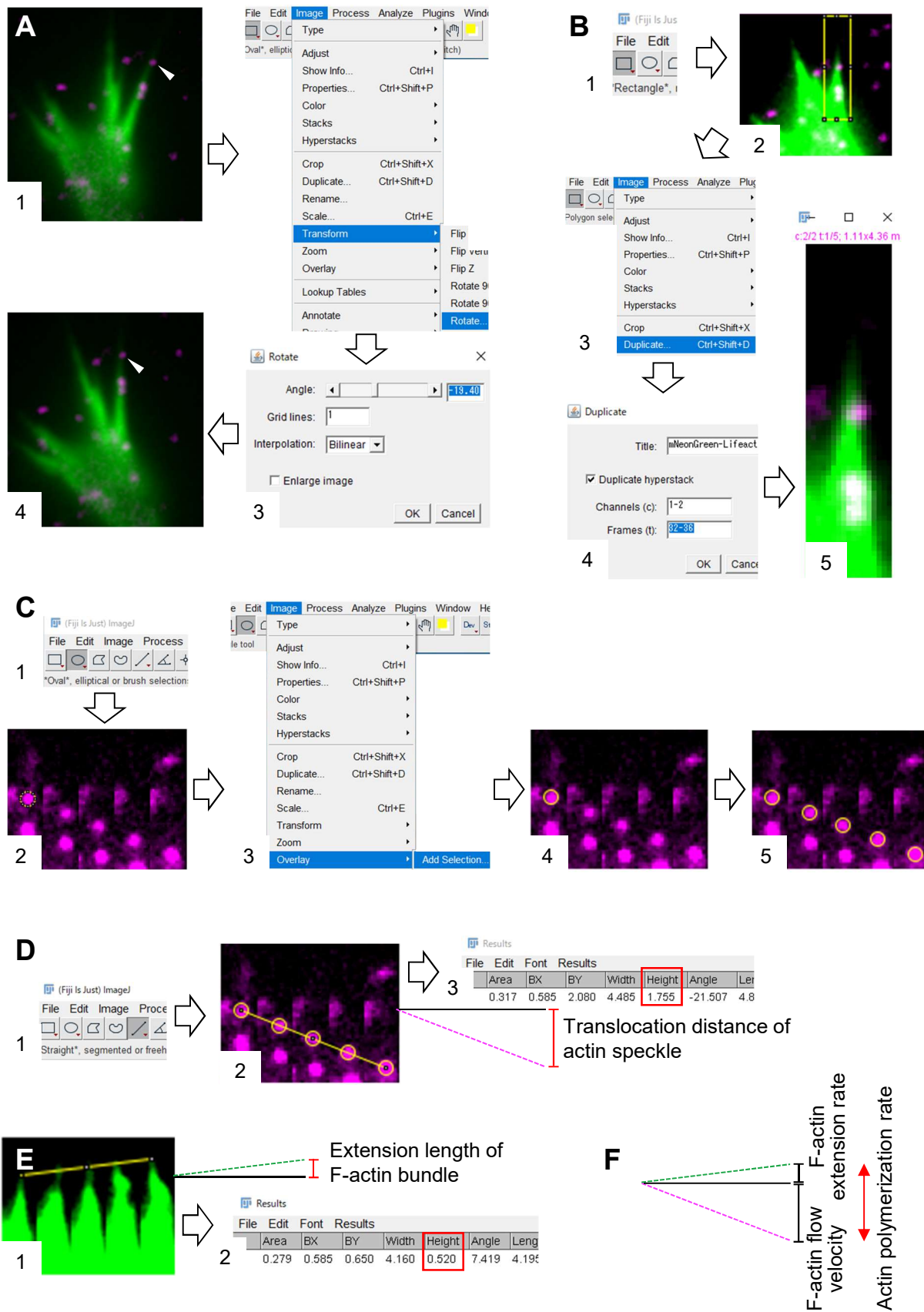
Figure 1 Minegishi et al.



**Figure 2 Minegishi et al.**

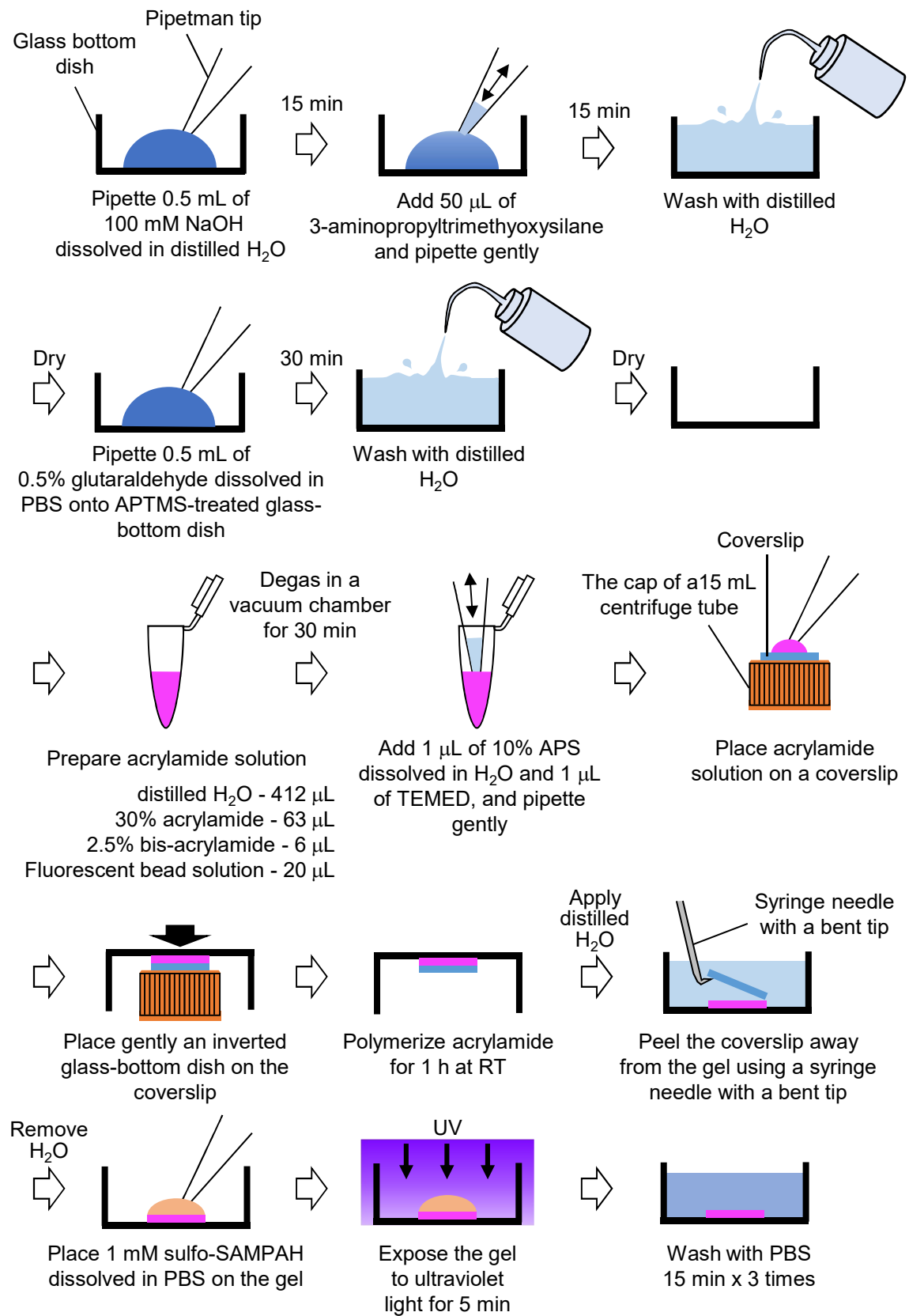


**Figure 3 Minegishi et al.**

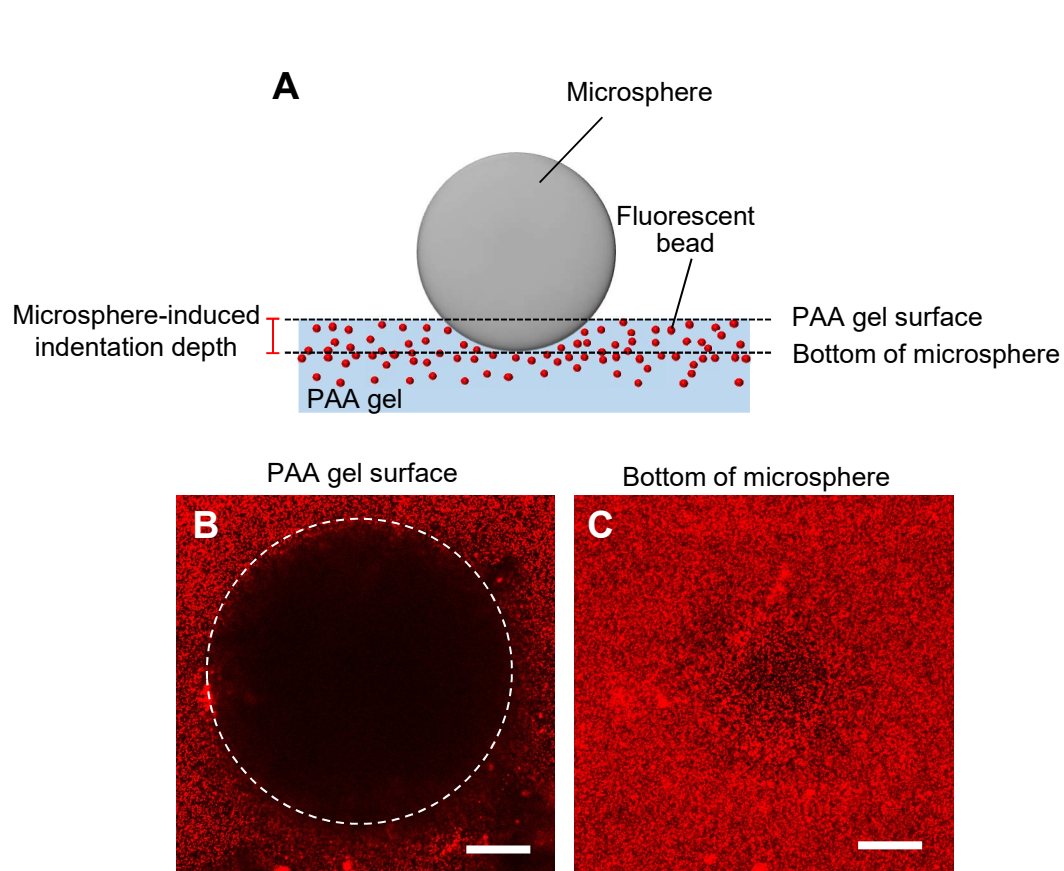




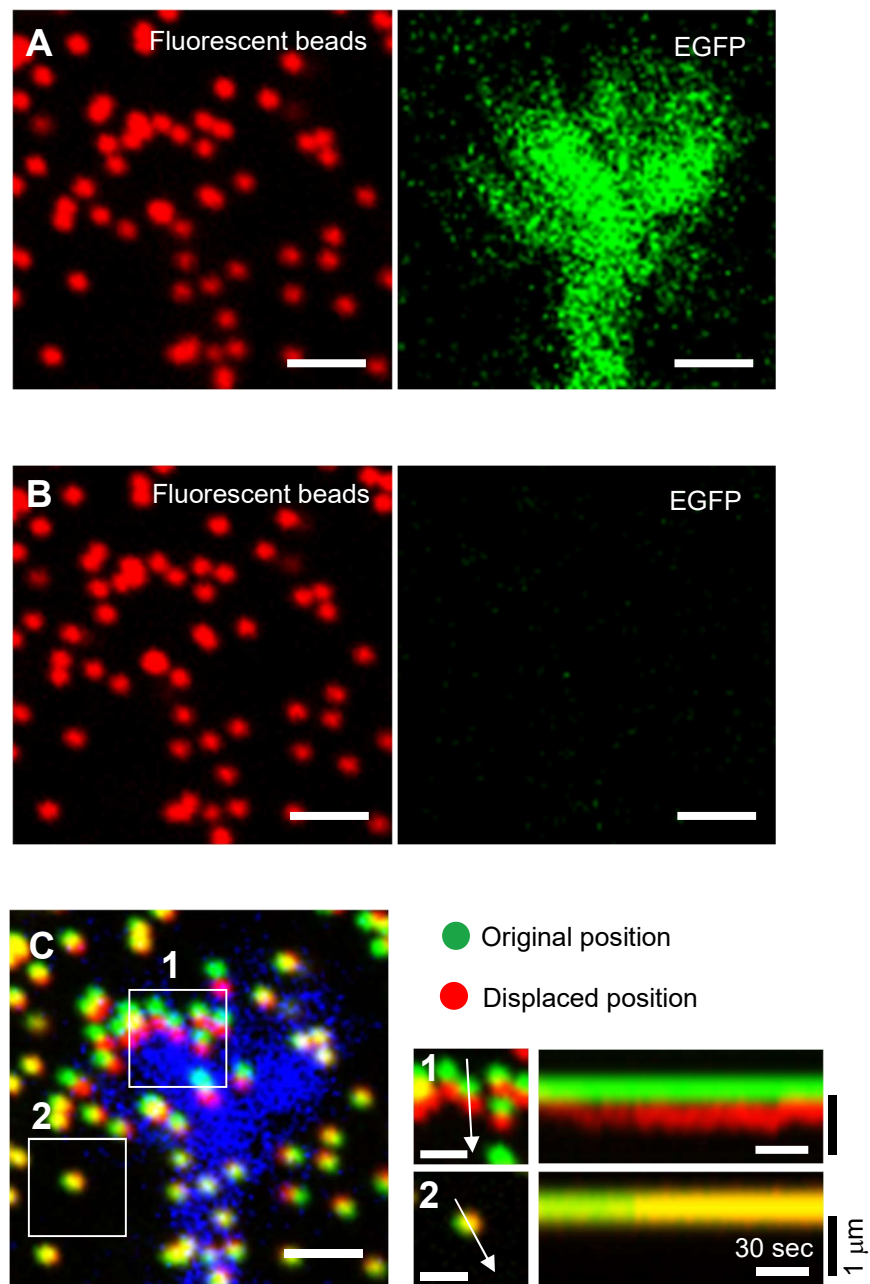
**Figure 4 Minegishi et al.**



**Figure 5 Minegishi et al.**



**Figure 6** Minegishi et al.



**Figure 7 Minegishi et al.**

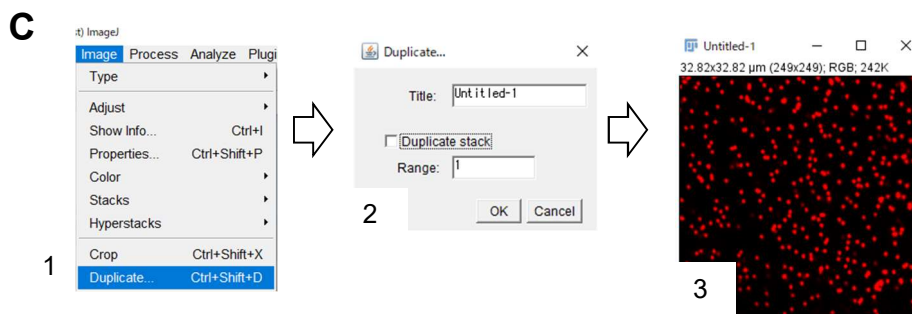
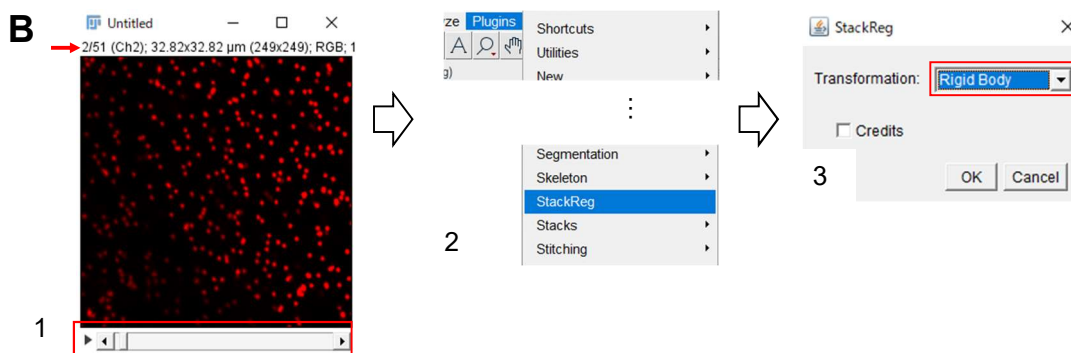
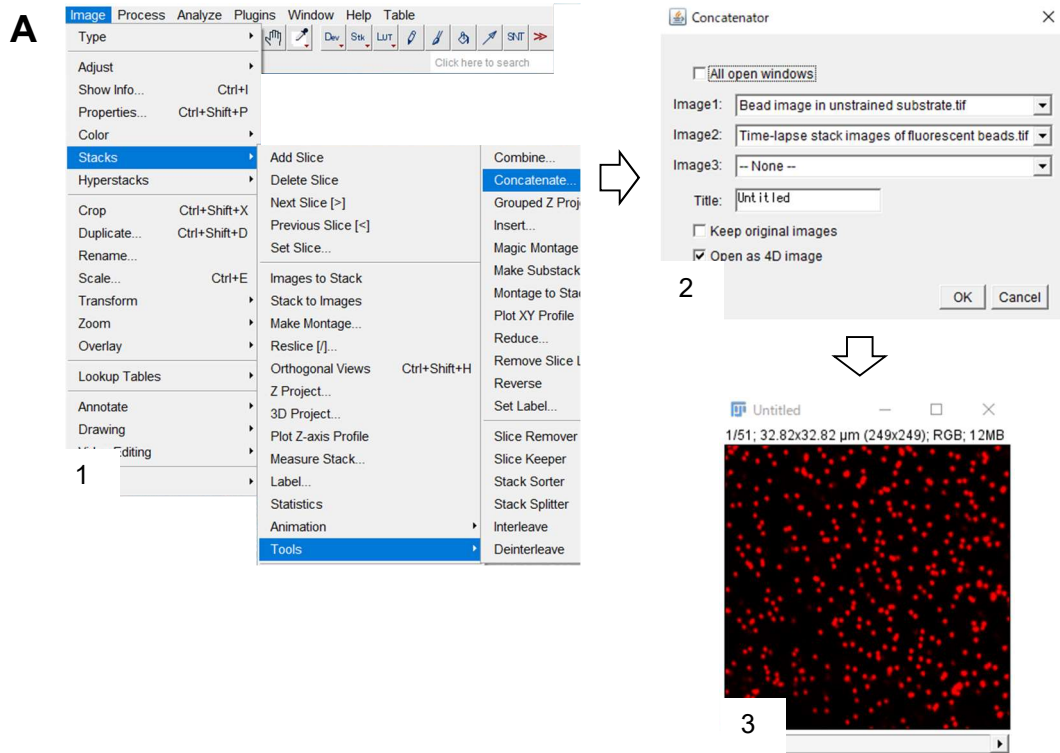
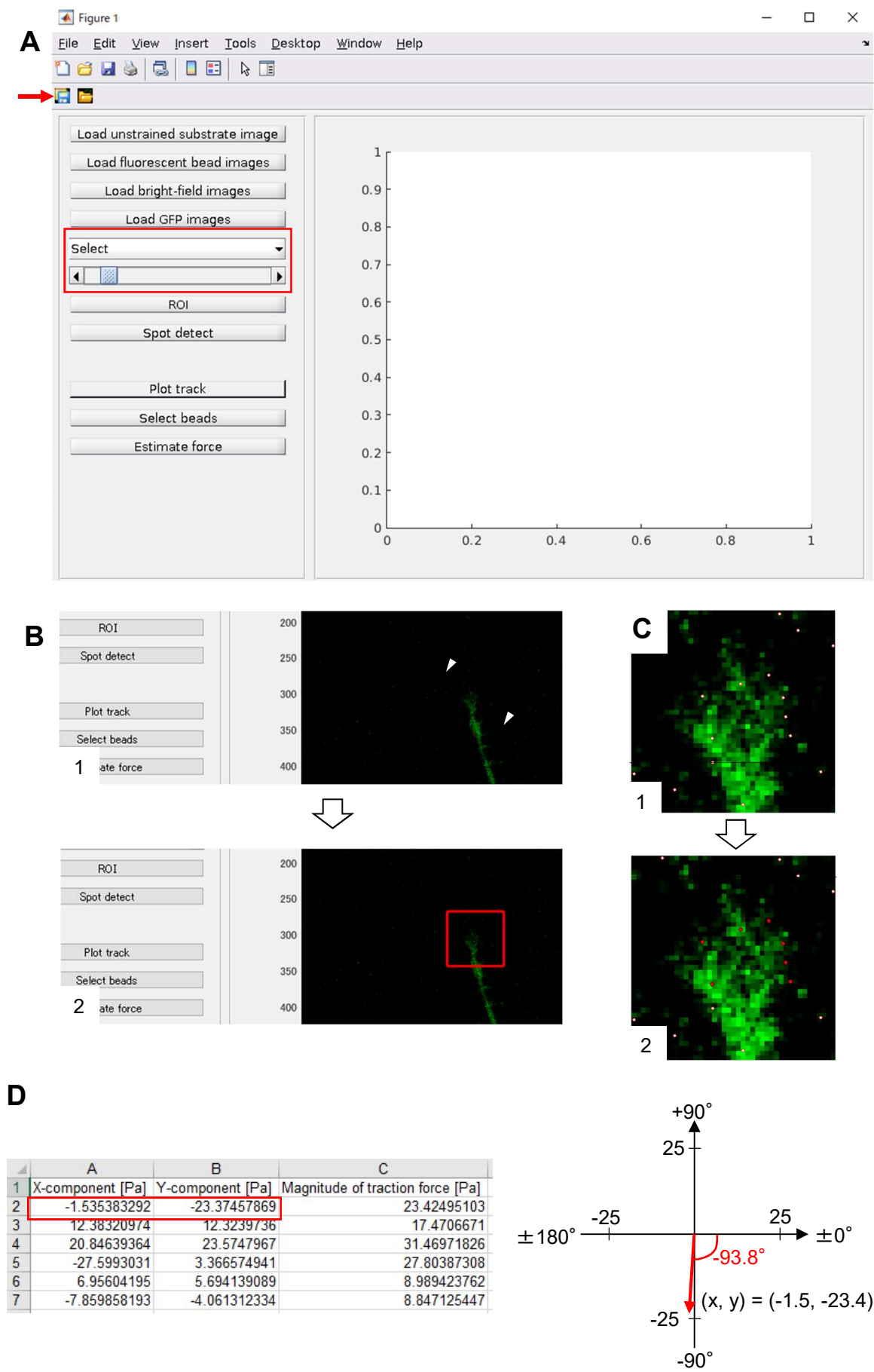
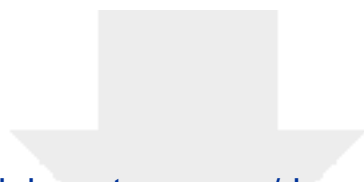


Figure 8 Minegishi et al.

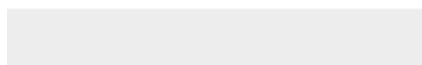
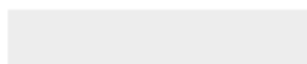


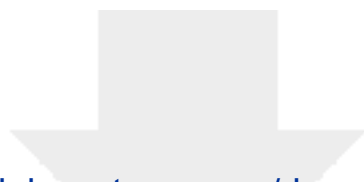


[Click here to access/download](#)

**Video or Animated Figure**

JoVE Review - Supplemental File 2.mp4

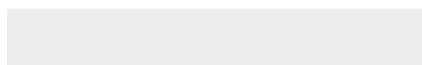
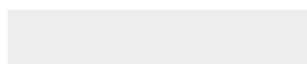




[Click here to access/download](#)

**Video or Animated Figure**

JoVE Review - Supplemental File 4.mp4



<b>Supplemental File 1: Recipes of solutions and culture media used in this study.</b>
<b>Phosphate buffered saline (PBS) (KH<sub>2</sub>PO<sub>4</sub> (1 mM), NaCl (155 mM), Na<sub>2</sub>HPO<sub>4</sub> (3 mM) dissolved in distilled H<sub>2</sub>O)</b>
PBS pH 7.4 (10x) - 100 mL distilled H <sub>2</sub> O - 900 mL  Sterilize the solution by autoclaving and store at room temperature for 2–3 months.
<b>Dissection solution (D-Glucose (22 mM) dissolved in PBS)</b>
PBS pH 7.4 (10x) - 100 mL D-glucose - 4 g distilled H <sub>2</sub> O - 900 mL  Sterilize the solution using a vacuum filter (0.2 mm pore size), aliquot 20 mL into 50 mL tubes and store at -30 °C for 2–3 months.
<b>Dissociation solution (Bovine serum albumin (15 mM), DNaseI (0.19 mM), and D-Glucose (10 mM) dissolved in PBS)</b>
PBS pH 7.4 (10x) - 100 mL BSA - 1 g DNaseI - 6 mg D-glucose - 1.8 g distilled H <sub>2</sub> O - 900 mL  Sterilize the solution using a vacuum filter (0.2 mm pore size), aliquot 20 mL into 50 mL tubes and store at -30 °C for 2–3 months.
<b>Digestion solution (Bovine serum albumin (15 mM), DNaseI (0.19 mM), D-Glucose (10 mM), and Papain (21 mM) dissolved in PBS)</b>
Dissociation solution - 200 mL Papain - 100 mg  Sterilize the solution using a vacuum filter (0.2 mm pore size), aliquot 5 mL into 15 mL tubes and store at -30 °C for 2–3 months.
<b>Neurobasal medium containing 10% fetal bovine serum, penicillin (100 U/mL), and streptomycin (100 µg/mL)</b>
Neurobasal - 44.5 mL FBS - 5 mL Penicillin-streptomycin (100x) - 500 mL  Prepare the medium under sterile conditions and store at 4 °C for 2 weeks.
<b>Neurobasal medium containing 2% B-27 supplement, penicillin (100 U/mL), and streptomycin (100 µg/mL)</b>
Neurobasal - 48 mL B27 supplement (50x) - 1 mL 100 mM L-glutamine in H <sub>2</sub> O - 500 mL Penicillin-streptomycin (100x) - 500 mL  Prepare the medium under sterile conditions and store at 4 °C for 2 weeks.
<b>Leibovitz's L-15 medium containing 2% B-27 supplement, penicillin (100 U/mL), and streptomycin (100 µg/mL)</b>



Leibovitz's L-15 medium - 48 mL  
B27 supplement (50x) - 1 mL  
100 mM L-glutamine - 500 mL  
Penicillin-streptomycin (100x) - 500 mL

Prepare the medium under sterile conditions and store at 4 °C for 2 weeks.

**30% (w/v) acrylamide solution**

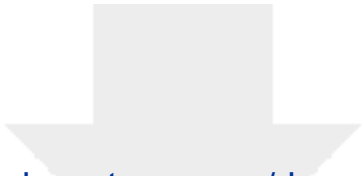
Acrylamide monomer - 15 g  
distilled H<sub>2</sub>O – up to 50 mL

Protect the solution from light and store at 4 °C for 2–3 months.

**2.5% (w/v) bis-acrylamide solution**

N,N'-methylenebisacrylamide - 250 mg  
distilled H<sub>2</sub>O - 10 mL

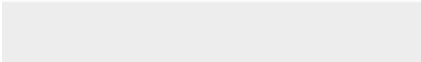
Protect the solution from light and store at 4 °C for 2–3 months.



[Click here to access/download](#)

**Table of Materials**

**JoVE\_Materials -63227R1.xlsx**





-Outgrow your limits-

## Nara Institute of Science and Technology

Laboratory of Systems Neurobiology and Medicine  
8916-5 Takayama-cho, Ikoma, Nara, 630-0192, Japan  
Phone: +81-743-72-5466 E-mail: [ninagaki@bs.naist.jp](mailto:ninagaki@bs.naist.jp)

Dr. Amit Krishnan

September 29, 2021

Review Editor

*Journal of Visualized Experiments*

Manuscript Number: JoVE63227

Dear Dr. Krishnan

Thank you very much for your letter of September 16 concerning our manuscript entitled “Analyses of actin dynamics, clutch coupling and traction force for growth cone advance”, together with reviewers’ comments.

We have carefully examined the reviewers’ comments, and have addressed all of them point-by-point by additional explanations. The “response to the reviewers” describes our responses to these comments and the changes we have made in the revised version. In addition, we have carefully examined your request, and answer them as follows. Changes in the text of the manuscript are highlighted in red font.

*1. Please take this opportunity to thoroughly proofread the manuscript to ensure that there are no spelling or grammar issues.*

According to the suggestion, the grammar and spelling have been checked and improved in the revised manuscript.

*2. Please provide an institutional email address for each author.*

We added an institutional email address for each author (lines 17-20).

*3. Please revise the following lines to avoid previously published work: 36-38,92-94, 581-584,608-610. Please refer to the iThenticate report attached.*

Thank you for your comment. We have correspondingly revised the appropriate text (lines 42-44, 99-100, 624-628, and 665-666).

*4. Please revise the text to avoid the use of any personal pronouns (e.g., "we", "you", "our" etc.).*

Personal pronouns have been deleted in the revised version of the manuscript (lines 28-29, 48, 51, 85, 90, 97, 232, 255, 279, 306, 417, 433, 493, 693, and 717).

*5. Please ensure that the Introduction includes all of the following:*

*a) A clear statement of the overall goal of this method*

- b) The rationale behind the development and/or use of this technique*
- c) The advantages over alternative techniques with applicable references to previous studies*
- d) A description of the context of the technique in the wider body of literature*
- e) Information to help readers to determine whether the method is appropriate for their application*

We have addressed each of these points in the Introduction.

*6. JoVE cannot publish manuscripts containing commercial language. This includes trademark symbols (™), registered symbols (®), and company names before an instrument or reagent. Please remove all commercial language from your manuscript and use generic terms instead. All commercial products should be sufficiently referenced in the Table of Materials. For example: Axio Observer Z1, Zeiss, ORCA Flash, ZEN2012, HBO 103, LSM710, ZEN 2009, C-Apochromat 63x/1.2 W Corr etc.*

According to the comment, we have deleted the use of commercial language, and use generic terms instead in the revised manuscript (lines 232-234 and 417-419). However, our traction force analysis code requires MATLAB, so please allow us to use the word ‘MATLAB’ in the manuscript.

*7. Please adjust the numbering of the Protocol to follow the JoVE Instructions for Authors. For example, 1 should be followed by 1.1 and then 1.1.1 and 1.1.2 if necessary. Please refrain from using bullets or dashes.*

The numbering of the Protocol has been changed as requested.

*8. For SI units, please use standard abbreviations when the unit is preceded by a numeral throughout the protocol. Abbreviate liters to L to avoid confusion. Examples: 10 mL, 8 µL, 7 cm<sup>2</sup>*

Original paper followed the requested format.

*9. For time units, please use abbreviated forms for durations of less than one day when the unit is preceded by a numeral throughout the protocol. Do not abbreviate day, week, month, and year. Examples: 5 h, 10 min, 100 s, 8 days, 10 weeks*

According to the request, we have changed “sec” to “s” in the revised manuscript (lines 627, 666, and 674).

*10. Please note that your protocol will be used to generate the script for the video and must contain everything that you would like shown in the video. Please add more details to your protocol steps. Please ensure you answer the “how” question, i.e., how is the step performed? Alternatively, add references to published material specifying how to perform the protocol action. Please add more specific details (e.g. button clicks for software actions, numerical values for settings, etc) to your protocol steps. There should be enough detail in each step to supplement the*

*actions seen in the video so that viewers can easily replicate the protocol.*

In the revised version, we have added procedures (lines 450-451 and 456-486) and have provided a new Figure (**Figure 7**) in the protocol of traction force microscopy. These explain how to correct the changes in xyz-position after application of SDS solution.

*11. Line 107-176: Please revise the solution compositions as actionable steps or consider providing them as Tables in separate .xls or .xlsx files uploaded to your Editorial Manager account. These tables can then be referenced in the protocol text.*

As suggested, we summarized the recipes of solutions and media used in this study in a table as **Supplemental file 1**.

*12. Line 181/184: Please specify the duration of each wash.*

We remove coating solutions, and then place 1 mL of PBS on the glass for 10 sec three times. We have explained this in the revised version (Lines 123 and 128).

*13. Line 189: Being a videobased journal, JoVE authors must be very specific when it comes to the humane treatment of animals. Regarding animal treatment in the protocol, please add the following information to the text:*

*a) Please specify the euthanasia method.*

We euthanize mice by cervical dislocation which is approved our institute. We mentioned this in the revised version (line 136).

*b) Please mention how animals are anesthetized and how proper anesthetization is confirmed.*

No anesthesia was used in this study.

*c) Discuss maintenance of sterile conditions.*

The present study used commercially available mice that are bred and humanely-treated in a sterilized environment. This is clarified in the revised version of the paper (lines 138-139).

*d) Please do not highlight any steps describing euthanasia.*

According to the request, we avoided to highlight the euthanasia step.

*14. Line 195: Please specify the volume of digestion solution used.*

We used 5 mL of digestion solution in this study. This is described in the revised version of the paper (line 149).

*15. Line 238: Please elaborate on the electroporation step. Please provide specific details on the electroporation apparatus settings.*

We used program O-005 of the electroporation apparatus Nucleofector I. However, the detail setting such as voltage and ampere are not published. The program number is stated in the revised version (line 197) of the manuscript.

*16. Please include a one-line space between each protocol step and then highlight up to 3 pages of the Protocol (including headings and spacing) that identifies the essential steps of the protocol for the video, i.e., the steps that should be visualized to tell the most cohesive story of the Protocol. Remember that non-highlighted Protocol steps will remain in the manuscript, and therefore will still be available to the reader.*

According to the request, we included a one-line space between each protocol step and highlighted the essential steps of the protocol for filming (yellow highlight).

*17. Please ensure that the protocol section does not exceed the 10-page limit.*

In the revised manuscript, the protocol section does not exceed the 10-page limit.

*18. As we are a methods journal, please revise the Discussion to explicitly cover the following in detail in 3-6 paragraphs with citations:*

- a) Critical steps within the protocol*
- b) Any modifications and troubleshooting of the technique*
- c) Any limitations of the technique*
- d) The significance with respect to existing methods*
- e) Any future applications of the technique*

These topics have been elaborated on in the Discussion section.

*19. Please do not use the &-sign or the word “and” when listing authors in the references. Authors should be listed as last name author 1, initials author 1, last name author 2, initials author 2, etc. Title case and italicize journal titles and book titles. Do not use any abbreviations. Article titles should start with a capital letter and end with a period and should appear exactly as they were published in the original work, without any abbreviations or truncations.*

The reference style has been modified accordingly.

*20. Figure 2: Please include scale bars in all the Lifeact and HaloTag images.*

Thank you for your comment. we added scale bars in all the Lifeact and HaloTag images in **Figure 2**.

In **Figures 3, 7, and 8**, we show cell images. These images are screenshots that explain the procedures for data analyses and image correction, and scale bars are not displayed in the images. To prevent confusion, we did not to include scale bars in **Figures 3, 7, and 8**.

21. *Figure 6: Please include scale bars in all the images of the panel.*

According to the comment, we added scale bars in all the images of the panel.

Thank you again for your through review. We hope our revised manuscript will now be acceptable for publication in *Journal of Visualized Experiments*.

With best regards,

Naoyuki Inagaki, M.D., Ph.D.  
Professor  
Laboratory of Systems Neurobiology and Medicine  
Graduate School of Biological Sciences  
Nara Institute of Science and Technology  
Ikoma 630-0192, Japan  
Tel: 81-743-72-5466 Fax: 81-743-72-5509  
e-mail: ninagaki@bs.naist.jp

## Response to the comments of Reviewer #1

(Manuscript Number: JoVE63227)

We thank Reviewer #1 for kind review and constructive suggestions. The following are our point-by-point responses to the comments. Changes in the text of the manuscript are highlighted in red font.

*1) P10. Line 275: Are red and green fluorescence signals sequentially or simultaneously acquired during fluorescent microscopy? Since the exposure time is 500 ms, sequential image acquisition of different channels will likely result in temporally mismatched images of the LifeAct and actin-Halo signals. Please clarify this point, and if the images of different colors are indeed sequentially acquired, the authors should discuss and offer solutions for this potential problem.*

**Response 1:** In this protocol, Lifeact and HaloTag-actin signals are sequentially acquired during live imaging. Because actin retrograde flow is slow ( $4.5 \pm 0.1 \mu\text{m}/\text{min}$ ) (Baba *et al.*, *eLife*, 7:e34593, 2018), sequential image acquisition of different fluorescent channels ( $\sim 1$  sec interval) does not significantly affect analyses of F-actin retrograde flow and actin polymerization. This explanation has been included in the revised version of the manuscript (lines 697-700).

*2) P12. Line 445-449: How to correct for the changes in x-y position due to thermal change before and after removal of the neuron using SDS? This is not trivial, and the results of correction have a considerable impact on the estimation of traction force between the growth cone and the substrate. Compared to the procedure for imaging retrograde actin flow, the description and illustration for quantifying traction force are less comprehensive. The authors should consider substantiating this part by offering more details in (1) the quantitative analysis procedure and (2) Figures 6 and 7.*

**Response 2:** We thank the reviewer for this helpful comment. We have described the procedures for correcting x-y position (lines 456-486) and have further provided a new Figure (**Figure 7**) for explaining the procedures.

*3) In Fig. 2, the LifeAct signals look rather diffuse. Is this because of the image being an epifluorescent photomicrograph with light coming from both in-focus and out-of-focus planes, or a result of overexpression of LifeAct?*

**Response 3:** The purpose of the Lifeact imaging is to determine the distal end of F-actins in growth cones, which is essential for quantifying the F-actin polymerization rate (**Figure 3E and F**). As the distal tip of growth cone is thin compared to the proximal growth cone, the Lifeact signals at the distal tips are weak and faint (**Figure 2B**). To analyze precisely weak Lifeact signals at the growth cone tips, we enhance it (**Figure 3B**). Although the signals in the proximal part become



saturated, this will not disturb the determination of the distal end of F-actins (**Figure 3E, yellow line**). We explained this in the revised version (lines 277-282).

## **Response to the comments of Reviewer #2**

**(Manuscript Number: JoVE63227)**

We thank Reviewer #2 for a detailed review with suggestion to improve our paper. The following are our point-by-point responses to the comments. Changes in the text of the manuscript are highlighted in red font.

*1) It is an easy to read manuscript, nevertheless, it needs to be checked and improved for grammar and spelling.*

**Response 1:** We thank the reviewer for this suggestion. The grammar and spelling have been checked and improved in the revised manuscript.

*2) The authors should discuss the limitations of Lifeact as a tool to visualize actin in the light of recent publications (Kumari et al., 2020; Belyy et al., 2020; Flores et al., 2019).*

**Response 2:** Thank you to the reviewer for this helpful comment. The limitations of Lifeact are discussed in the revised version of the paper (lines 700-702)

*3) The authors should also cite Clare Waterman's original paper on fluorescent speckle microscopy.*

**Response 3:** Dr. Clare Waterman's paper on fluorescent speckle microscopy (Waterman *et al.*, *Curr Biol*, 8:1227-1230, 1998) has been cited in the revised version (lines 67, 91, 94, and 695)

*4) Line 445-449: Since proper xyz correction is crucial to get accurate and reproducible data, the authors should elaborate on the exact method of correction.*

**Response 4:** According to the suggestion, we have described the procedures for correcting xyz position (lines 450-451 and 456-486) and have further provided a new Figure (**Figure 7**) for explaining the procedures.

*5) The authors should include raw training datasets as supplementary material for novice users.*

**Response 5:** In response to this suggestion, we have provided raw training datasets to help scientists practice and learn the methodologies for quantifying F-actin flow velocity, polymerization rate (**Supplemental file 3**) and traction force (**Supplemental file 6**).

*6) The authors should discuss the advantages/limitations of the presented traction force microscopy method as compared to other similar assays.*

**Response 6:** In the revised manuscript, we described the advantage and limitation of the presented traction force microscopy method in comparison with other methods (lines 706-714).

*7) Line 102: The authors should state which solutions should be freshly prepared and how long can they be stored.*

**Response 7:** All solutions and culture media used in this study can be stored for relatively long term. We have described the storage terms of solutions and culture media in the revised version (**Supplementary File 1**).

*8) Line 179-180: I assume that CO<sub>2</sub> is not necessary for the preparation of laminin-coated substrates. Also, this should be called PDL/Laminin-coated surface because both PDL and Laminin seem to be required for proper cell differentiation.*

**Response 8:** We agree with the reviewer. We have deleted '5% CO<sub>2</sub>' in the revised version (lines 119, 126, and 131). In addition, "Laminin-coated" has been changed to "PDL/laminin-coated" (lines 117, 133, 209, and 402).

*9) Line 185-186: Is it for long-time storage or just prior to culture preparation?*

**Response 9:** PDL/laminin-coated dishes can be stored for 2-3 days in 37°C prior to culture preparation. This explanation has been included in the revised version of the manuscript (line 133).

*10) Line 195: What is the volume of digestion solution per hippocampi?*

**Response 10:** Hippocampi were incubated in 5 mL of digestion solution. This information has been added to the revised manuscript (line 149).

*11) Line 223 and 245: Is it recommended to add trypan blue to count the living cells?*

**Response 11:** Yes, we usually use trypan blue for counting the number of the living cells. This is described in the revised manuscript (lines 179-180 and 206-207).

*12) Line 224: How much is "the appropriate amount of DNA" here?*

**Response 12:** In our experiments, we usually use 1 µg of pFN21A-HaloTag-actin and 3 µg of pmNeonGreen-N1-Lifeact per  $1 \times 10^6$  cells. We have explained this in the revised version (lines 184-185).

*13) Line 256: TMR should be defined as tetramethyl-rhodamine.*

**Response 13:** We have described 'tetramethyl-rhodamine' in the revised version (line 220).

*14) Line 361: I guess this solution should be pipetted onto the APTMS-treated surface.*

**Response 14:** Yes. 0.5% glutaraldehyde solution is pipetted onto a 3-aminopropyltrimethoxysilane (APTMS)-treated glass-bottom dish. To prevent confusion, we have revised this description in the revised version (line 346-347) and in **Figure 4**.

*15) Lines 107-176: Recipes of all buffers and solutions should contain the final concentration of each component.*

**Response 14:** We thank the reviewer for this suggestion. We have described the final concentrations of solutions and culture media, and provide this as **Supplementary file 1**.