

Journal of Visualized Experiments

Neural stem cell reactivation in cultured Drosophila brain explants

--Manuscript Draft--

Article Type:	Invited Methods Article - JoVE Produced Video
Manuscript Number:	JoVE63189R2
Full Title:	Neural stem cell reactivation in cultured Drosophila brain explants
Corresponding Author:	Sarah Siegrist University of Virginia Charlottesville, VA UNITED STATES
Corresponding Author's Institution:	University of Virginia
Corresponding Author E-Mail:	ses4gr@virginia.edu
Order of Authors:	Cami Keliinui Susan Doyle Sarah Siegrist
Additional Information:	
Question	Response
Please specify the section of the submitted manuscript.	Neuroscience
Please indicate whether this article will be Standard Access or Open Access.	Standard Access (\$1400)
Please indicate the city, state/province, and country where this article will be filmed . Please do not use abbreviations.	Charlottesville, Virginia, USA
Please confirm that you have read and agree to the terms and conditions of the author license agreement that applies below:	I agree to the Author License Agreement
Please confirm that you have read and agree to the terms and conditions of the video release that applies below:	I agree to the Video Release
Please provide any comments to the journal here.	

TITLE:

Neural Stem Cell Reactivation in Cultured *Drosophila* Brain Explants

AUTHORS AND AFFILIATIONS:

Cami Naomi Keliinui, Susan E. Doyle, Sarah E. Siegrist

Biology department, University of Virginia, Charlottesville VA, 22904, USA

Email addresses of co-authors:

Cami Naomi Keliinui (ckk7q@virginia.edu)

Susan E. Doyle (sed5c@virginia.edu)

Sarah E. Siegrist (ses4gr@virginia.edu)

Corresponding author:

Sarah E. Siegrist (ses4gr@virginia.edu)

SUMMARY:

A method to reactivate quiescent neural stem cells in cultured *Drosophila* brain explants has been established. Using this method, the role of systemic signals can be uncoupled from tissue-intrinsic signals in the regulation of neural stem cell quiescence, entry and exit.

ABSTRACT:

Neural stem cells (NSCs) have the ability to proliferate, differentiate, undergo apoptosis, and even enter and exit quiescence. Many of these processes are controlled by the complex interplay between NSC intrinsic genetic programs with NSC extrinsic factors, local and systemic. In the genetic model organism, *Drosophila melanogaster*, NSCs, known as neuroblasts (NBs), switch from quiescence to proliferation during the embryonic to larval transition. During this time, larvae emerge from their eggshells and begin crawling, seeking out dietary nutrients. In response to animal feeding, the fat body, an endocrine organ with lipid storage capacity, produces a signal, which is released systemically into the circulating hemolymph. In response to the fat body-derived signal (FBDS), *Drosophila* insulin-like peptides (Dilps) are produced and released from brain neurosecretory neurons and glia, leading to downstream activation of PI3-kinase growth signaling in NBs and their glial and tracheal niche. Although this is the current model for how NBs switch from quiescence to proliferation, the nature of the FBDS extrinsic cue remains elusive. To better understand how NB extrinsic systemic cues regulate exit from quiescence, a method was developed to culture early larval brains before animal feeding in vitro. With this method, exogenous factors can be supplied to the culture media and NB exit from quiescence assayed. We found that exogenous insulin is sufficient to reactivate NBs from quiescence in whole-brain explants. Because this method is well-suited for large-scale screens, we aim to identify additional extrinsic cues that regulate NB quiescence versus proliferation decisions. Because the genes and pathways that regulate NSC proliferation decisions are evolutionarily conserved, results from this assay could provide insight into improving regenerative therapies in the clinic.

INTRODUCTION:

Stem cells are of great interest because of their potential for use in regenerative medicine^{1,2}. Many animals, especially those that are long-lived, maintain stem cells within their adult tissues. These resident stem cells function to maintain tissue homeostasis and are utilized for repair following physical injury or disease^{3,4}. Most stem cells in adult animals are quiescent, a relatively dormant state characterized by cell cycle arrest and inactivation of growth signaling⁵. In response to extrinsic cues, stem cells exit from quiescence, enter the cell cycle and begin generating daughter progeny specific to their tissue type. For example, in order to mount an effective immune response, antigen-presenting cells induce quiescent naive T cells to enter cell cycle and clonally expand⁶. In response to skeletal muscle damage, muscle satellite stem cells enter the cell cycle and generate daughter myoblasts to replace damaged myofibrils^{5,7}. While it is clear that quiescent stem cells respond to extrinsic signals, in many cases, the nature of the extrinsic cue remains unclear as well as the mechanism of cue-induced stem cell activation. Gaining a better understanding of how quiescent stem cells respond to extrinsic cues and enter the cell cycle will aid in the development of better stem cell therapies in the clinic and increase scientific knowledge.

For decades now, model organisms have been used to uncover the genes and cell signaling pathways that regulate stem cell proliferation during development and in adulthood. In *Drosophila*, neural stem cells (NSCs), known as neuroblasts (NBs), divide throughout development to generate all neurons and glia that ultimately integrate, forming the neural circuitry required for brain function^{8,9}. Like other stem cells, NBs divide asymmetrically to self-renew and, in some cases, symmetrically to expand the stem cell pool. NBs are specified during embryogenesis and most enter quiescence towards the end, coincident with declining maternal nutrient stores (**Figure 1**). After embryogenesis is complete, larvae hatch and begin feeding. In response to animal feeding, NBs reactivate from quiescence and resume cell divisions¹⁰⁻¹⁶. Because the *Drosophila* CNS is relatively simple and because NBs enter and exit quiescence at defined times, using *Drosophila* to investigate the regulation of quiescence, entry and exit, proves ideal.

[Place **Figure 1** Here]

In response to animal feeding, PI3-kinase and TOR growth signaling pathways become active in NBs and in their glial and tracheal niche^{10,11,15,16}. When dietary nutrients are withdrawn or when levels of PI3-kinase are reduced, NBs fail to reactivate and growth of glia and trachea are also reduced^{10,11,15,16}. The current model posits that NB reactivation is coupled to larval growth by the fat body, which releases a systemic signal in response to animal feeding^{12,17,18}. This signal, which remains elusive, likely promotes the expression and release of *Drosophila* insulin-like peptide (Dilps) in the brain, which leads to the downstream activation of PI3-kinase in NBs and their glial and tracheal niche. To better understand the nature of the systemic cue(s), we developed a method to reactivate quiescent NBs in cultured brain explants. With this method, reactivation of NBs can be assayed in the absence of whole animal systemic cues. Exogenous factors can be resupplied to the culture media and NB reactivation assayed based on the incorporation of the thymidine analog, EdU. Using this method, we determined that exogenous insulin is sufficient to reactivate quiescent NBs in brain explants. Future work will be aimed at identifying additional

factors that, when added back, either positively or negatively regulate NB quiescence in brain explants.

PROTOCOL:

1. *Drosophila* larvae collection

NOTE: Prepare the yeast plate, grape plate, and the Fly condo before starting:

1.1. Yeast paste: In a small container, mix 5 g of active dry yeast with 10 mL of water to form a paste that has the consistency of peanut butter. Cover the yeast paste with plastic wrap and use a rubber band to firmly attach it to the container.

NOTE: Fresh yeast paste will expand in its container and will pop off the lid unless firmly attached. Yeast paste will last for several days at room temperature (RT).

1.2. Grape plates: Follow the recipe for making grape plates (**Table 1**). If using plates stored at 4°C, make sure to pre-warm plates before use by placing them at RT for 1 h.

1.2.1. Mix water (750 mL) and agar (18.75 g) in a 4 L flask, swirl, and autoclave for 20 min (liquid cycle).

1.2.2. Mix the grape juice (250 mL) and sucrose (25 g) in a 1 L flask with a large stir bar on a heated plate (low heat). When the sucrose is dissolved, turn off the heat, wait until the flask can be touched before adding Tegosept (10%, 5 mL) and Propionic acid (5 mL). Keep the stir bar on.

1.2.3. When the autoclaving is complete, let it cool until the flask can be touched (~60 °C), then mix in the grape juice mix.

1.2.4. Combine all solutions in one flask and let stir on the plate.

1.2.5. Pipette the solution into lids of small-sized Petri dishes (35 mm). Pipette roughly 9 mL per lid or until a convex dome is obtained.

1.2.6. OPTIONAL: Flame the lids to get rid of any bubbles.

1.2.7. When the plates solidify, stack the grape plates into a box with an airtight lid and place the box at 4 °C. Plates can be stored for up to 1 month.

1.3. Fly condo: Punch ~20 holes into a 6-ounce square bottom polypropylene *Drosophila* bottle using an 18 G needle.

1.4. Transfer adult flies (~100 OregonR or any genotype) to a fly condo and cap the condo with a grape agar plate topped with a dab of yeast paste. Place the dab towards the center of the plate and affix the plate to the condo with lab tape.

1.5. Invert the container so that the grape agar plate is on the bottom and place it in a 25 °C incubator for 24 h (**Figure 2**).

[Place **Figure 2** Here]

1.6. After 24 h, change the grape agar plate and replace it with a new plate topped with yeast paste. Quickly switch the two plates while continuously tapping the condo lightly on the bench so that the adult flies do not escape.

1.7. Examine the plate by eye and assess the number of embryos on the plate. *Drosophila* embryos are oblong and white with two string-like appendages.

1.8. If there are very few embryos on the plate (less than 100), discard the plate (scrap out the agar into the fly trash and save the plastic lid for reuse). In many cases, adult females will not lay many embryos on the first night in a new condo. If this is the case, give the adult flies another 24 h to acclimate.

1.9. If there is a large number of embryos on the plate (at least 100), keep it, and carefully remove the yeast paste using a flat bottom spatula.

1.10. Once the yeast paste is removed, use a metal pick to manually remove all larvae from the grape plate under a dissecting microscope. When looking at the plate under a dissecting microscope, crawling larvae should be observed as well as embryos.

1.11. Remove all larvae by brushing the metal pick towards the side of one larva. Larvae are sticky and will stick to the pick. Once one larva is on the pick, additional larvae can be easily picked up by using the larva on the tool to attach more.

NOTE: Larvae like to stick to each other. At this point, it does not matter if larvae get damaged. These larvae will be discarded.

1.12. After picking and removing all larvae, place the plate back into the 25 °C incubator. Ensure to place the plate in a larger container that can be sealed. Place wet paper towels in the bottom of the larger container to keep in moisture.

1.13. After 30–60 min, take the plate back to the dissecting microscope and now, carefully pick ~20–25 larvae from the same grape agar plate to ensure that the picked larvae are freshly hatched within a 30–60 min window of time.

1.14. Submerge the tip of the tool with the 20–25 freshly hatched larvae into a Petri dish (60 mm) filled with 1–2 mL of 1x Phosphate Buffered Saline (PBS) for 2 min.

1.15. After 2 min, tip the dish at an angle to pool the liquid at the bottom. Using a small paintbrush, brush the larvae out of the liquid up the bottom of the Petri dish.

1.16. Collect all larvae on the paintbrush and transfer the larvae to a new Petri dish (60 mm) containing 1–2 mL of 70% ethanol. Repeat steps 1.13–1.14 to collect larvae with a paintbrush and transfer them to a new Petri dish with 1–2 mL of 1x PBS.

2. Culture media and tool preparation

2.1. Spray the bench and work area with 70% ethanol and let dry.

2.2. Spray the dissection tools, forceps, and two glass watch dishes, with 70% ethanol and let them dry on the bench.

2.3. Make the supplemented Schneider's media (SSM, **Table 2**) and place it on ice.

2.4. Pipette 1 mL of SSM into each of the glass watch dishes.

2.5. Using a micropipette with a sterile tip, transfer the freshly hatched larvae from the plate of PBS to the SSM in the first glass watch dish. Using a micropipette with a sterile tip, transfer the freshly hatched larvae to the SSM in the second glass watch dish.

3. Dissections and brain cultures

3.1. Once the larvae are in the second glass watch dish with SSM, dissect the brains out of the larvae using forceps and a dissecting microscope. Adjust the magnification as needed.

3.2. Use one forceps to grab the mouth hooks and with the other, gently grab the body halfway down and pull in the opposite direction (**Figure 3**) to split the larva into two pieces.

NOTE: The brain will be located right behind the mouth hooks. Note that there may be other tissues surrounding the brain. Do not attempt to remove these tissues as it can result in damaging the brain

[Place **Figure 3** Here]

3.3. Once 15–20 brains have been dissected, add 1 mL of SSM into one well of a sterile 12-well culture tray. Transfer the freshly dissected brains into the SSM using a micropipette and a sterile tip (**Figure 4A**).

3.4. Place the brains in the SSM media in the 12-well culture tray into an incubator at 25 °C for 24 h (**Figure 4A**).

[Place **Figure 4** Here]

4. Proliferation assay, brain fixation, and antibody staining

4.1. The following day, make 1 mL of EdU SSM solution. Pipette 10 µL of a 10 mM stock of 5-Ethynyl-2'-deoxyuridine (EdU) with 990 µL of SSM (final EdU concentration equals 0.1 mM) into a sterile microcentrifuge tube and mix. After the 24 h incubation is complete, pipette the 1 mL of EdU SSM into one well of the sterile 12-well culture tray.

4.2. Transfer the brains using a micropipette with a sterile tip from the well containing SSM only to the new well containing the EdU SSM solution. Incubate for 1 h at 25 °C.

4.3. Next, transfer the EdU-labeled brains to another well in the same culture tray containing 1 mL of fixative (4% paraformaldehyde, see **Table 3** for recipe) for 20 min.

CAUTION: Paraformaldehyde is a biological hazard and must be disposed of properly.

4.4. After fixation, quickly transfer the brains to the wells of a 72-well mini tray using a micropipette. Each well can hold 10 brains and 10–15 µL of liquid (**Figure 4B**). Once the brains are transferred to the mini tray (no more than 10 brains per well), remove the fix and rinse the brains 3 times in 10 µL of 1x PBT (phosphate buffer, pH 7.4 containing 0.1% Triton-X 100).

NOTE: Rinsing means pipetting 10 µL of 1x PBT on the brains, removing, and repeating 3 times.

4.5. Next, wash the brains 3 times for 10 min each, again in 10 µL 1x PBT. Ensure that the brains are covered with some liquid at all times.

4.6. After the washes are complete, pipette 10 µL of blocking solution (1x PBT with 10% normal goat serum) onto the brains. Cover the tray and seal it using a strip of parafilm around the edge.

4.7. Once sealed, place the mini tray into a sealed box with wet towels to provide a moist environment to prevent evaporation. Place the box containing the tray at 4 °C overnight.

4.8. The following day, make a primary antibody solution.

NOTE: In this protocol, rabbit anti-scribble was used to label cell membranes and rat anti-deadpan to label neuroblasts, although any number of other primary antibodies could be used.

4.8.1. To make the primary antibody solution, first, make dilutions of primary antibodies in the blocking solution. For example, rabbit anti-scribble is used at a final concentration of 1:1000.

Therefore, first, dilute the rabbit anti-scribble antibody at 1:100 (1 μ L of antibody plus 99 μ L of blocking solution). Rat-deadpan is used at a final concentration of 1:100. Therefore, first, dilute the rat-deadpan antibody at 1:10 (1 μ L of antibody plus 9 μ L of blocking solution).

NOTE: These dilutions can be stored long term at 4 °C if sodium azide (0.05%) is also added to inhibit bacterial growth.

4.8.2. Next, count the number of wells that contain brains. The number of wells determines the volume of primary antibody solution to make. For example, if there are 2 wells of brains, prepare 20 μ L of primary antibody solution (for 10 wells, 100 μ L, etc.). To make a 20 μ L primary antibody solution, add 2 μ L of each primary antibody dilution and 16 μ L of the blocking solution.

NOTE: The final concentration of each of the primary antibodies is 1:1000 and 1:100, respectively. In short, make the first dilution of primary antibodies at a concentration so that the second dilution is always 1:10 to arrive at the respective final concentrations. In this case, 1:1000 for rabbit anti-scribble and 1:100 for rat anti-deadpan.

4.9. Remove the blocking solution with the micropipette set to 10 μ L and pipette 10 μ L of primary antibody solution into each well.

4.10. Cover and seal the tray using parafilm and place it back into the sealed box with wet towels. Incubate overnight at 4 °C.

NOTE: Shaking is not required and is strongly discouraged. Antibodies will penetrate the brains without shaking or mixing.

4.11. The following day, remove the primary antibody solution using a micropipette and rinse the brains 3 times with 10 μ L of 1x PBT. Next, wash the brains 4 times with 10 μ L of 1x PBT for 10 min each. During the 10 min washes, prepare the secondary antibody solution.

4.12. To make the secondary antibody solution, choose secondary antibodies that recognize the primary antibodies. In this protocol, goat anti-rabbit Alexa Fluor 488 and goat anti-rat Alexa 555 were used.

4.12.1. Pipette 1 μ L of each of the secondary antibodies into a microcentrifuge tube with 298 μ L of the blocking solution to make the final concentration 1:300 for each secondary antibody.

4.13. After the last 10 min wash, remove the 1x PBT and pipette 10 μ L of the secondary antibody solution into each well. Seal the tray using parafilm and place it back into the box with moist towels. Incubate overnight at 4 °C.

NOTE: Do not worry about removing every last μ L in the wells between rinses, washes, or when adding primary and secondary antibody solutions. The brains will always remain submerged in a few μ L of liquid, which is just fine.

4.14. The following day, remove the secondary antibody solution using a micropipette and rinse the brains 3 times with 10 μ L each of 1x PBT. Next, wash the brains 4 times with 10 μ L each of 1x PBT for 10 min each.

4.15. During the 10 min washes, prepare the EdU reaction mix to detect EdU incorporation. Prepare the EdU reaction mix according to the manufacturers' guidelines.

4.16. After the final wash, remove the 1x PBT and pipette 10 μ L of the EdU reaction mix into each well with brains. Seal the microwell plate with parafilm and cover with aluminum foil. Leave plate on the bench for 30 min.

4.17. After 30 min, rinse the brains 3 times with 10 μ L each of 1x PBT and wash the brains 3 times with 10 μ L each of 1x PBT for 5 min each.

4.18. After the last wash, remove the 1x PBT and pipette 10 μ L of a glycerol-based mounting media solution. Seal the plate and place at 4 °C overnight.

5. Mounting and imaging the brains

5.1. The following day, prepare microscope slides (25 mm x 75 mm x 1 mm): Glue (e.g., superglue) one 22 mm x 22 mm x 1 mm square cover glass to each end of the microscope slide to create a 'bridge' over which the larger 22 mm x 50 mm x 1 mm coverslip will be placed to make a space between the slide and the larger coverslip (**Figure 5A**). This space will allow the brain just enough movement to be correctly oriented while preventing it from being crushed.

[Place **Figure 5** Here]

5.2. After gluing the 22 mm x 22 mm x 1 mm cover glasses to the microscope slide, pipette 9.3 μ L of the glycerol-based mounting media solution containing one brain from a well of the microwell plate and place it onto the center of the slide (**Figure 5A**).

NOTE: Larval brains may adhere to the pipette tip, so be careful. To avoid adhesion, begin by aspirating the antifade and then aspirating the single brain towards the end of the 9.3 μ L volume.

5.3. Once the brain is on the slide, gently place the 22 mm x 50 mm x 1 mm coverslip on top. Position the brain as seen in **Figure 5B**. Gently move the coverslip around to orient the brain. The sample is then ready for imaging.

5.4. Use a confocal microscope equipped with high magnification and a high numerical aperture objective (**Figure 5C**) to acquire the best images. For example: 60x or 63x, 1.4 NA oil-immersion lens.

5.4.1. Image the brains with the dorsal surface closest to the coverslip (and objective). Acquire the Z stacks through the entire brain hemisphere starting at the ventral surface (furthest away from the objective) at 1 μ m intervals or Z step size.

NOTE: Lasers used depend on the secondary antibodies. In this protocol, the laser lines used were 488 nm to detect Scribble staining, 555 nm to detect Deadpan, and 633 nm to detect EdU.

6. Data analysis

6.1. Use Fiji open-source software to analyze brain hemispheres and use the Fiji cell counter plugin to count the cells.

REPRESENTATIVE RESULTS:

Freshly hatched OregonR wild-type brains were dissected and cultured for 24 h in supplemented Schneider's media (SSM) with insulin. Tissues were fixed and stained according to the protocol. Primary antibodies generated against Deadpan (Dpn) to detect NBs and Scribble to label cell membranes were used. The thymidine analog 5-Ethynyl-2'-deoxyuridine (Edu) was added to detect S-phase entry and NB reactivation. We found large sized Edu positive and Dpn positive NBs after 24 h in culture (**Figure 6A–C**). Next, freshly hatched OregonR wild-type brains were cultured for 24 h in supplemented Schneiders media without insulin. After 24 h in culture, we found no large-sized Edu positive and Dpn positive NBs other than the four mushroom body NBs and one ventrolateral NB (**Figure 6D–F**). The mushroom body and the ventrolateral neuroblasts are a subset of the central brain neuroblasts that divide continuously during the embryonic to larval transition. We conclude that exogenous insulin is sufficient to reactivate neuroblasts from quiescence in brain explants cultured in Schneider's media.

During confocal imaging, some brain hemispheres with damage were occasionally observed. The damage we found consisted of small to large-sized holes in the explanted brain tissue (**Figure 6G,H**). These tissues were excluded from the analysis. In addition to the 24 h time point, brains were also successfully cultured for 48 h (data not shown). After 48 h in culture, we found a further increase in the number of Dpn positive EdU positive CB NBs and an increase in the number of brains with tissue damage. This suggests that culturing brains long-term is likely feasible; however, great care must be taken to avoid tissue damage.

[Place **Figure 6** Here]

FIGURE AND TABLE LEGENDS:

Figure 1: Relative proliferation of CB NBs (central brain neuroblasts, red) and MB NBs (mushroom body neuroblasts, blue) over developmental time. At the end of embryogenesis, most NBs (red line) cease proliferation and enter quiescence. Quiescence continues until freshly hatched larvae consume their first complete meal. The time points of focus for this methodology are denoted in red circles (1, quiescence and 2, reactivation). MB NBs (blue) are a subset of central brain NBs that divide continually throughout development (4 per brain hemisphere).

Figure 2: Visual representation of inverted fly bottle (condo) with male and female *Drosophila* adults. The plastic bottle has small punctures, generated with an 18 G needle, for oxygen exchange. The mouth of the bottle is sealed with an agar grape juice cap and is inverted and stored in a 25 °C incubator.

Figure 3: *Drosophila* larvae in a glass watch dish with SSM. Forceps are properly positioned for dissection. The location of the larval brain (dark grey) is posterior to the mouth hooks (black), and both are shown inside the larva.

Figure 4: Brain culture and immunostaining. (A) Whole brains in a 12-well culture dish containing 1 mL of SSM. The culture dish is then placed in a 25 °C incubator for 24 h. (B) 72-well mini tray that holds brain explants during immunostaining. Brains are washed and solutions transferred using a P20 micropipette set to 10 µL.

Figure 5: Schematic showing microscope slide, orientation, and cell types in the larval brain. (A) Visual representation of microscope slide upon which a larval brain is mounted and is ready to be imaged. (B) A guideline is also shown to use for tissue orientation. (C) Microscope slide ready for imaging on a confocal microscope. (D) Cartoon showing some of the cell types in the larval brain.

Figure 6: Confocal imaging. (A–C) Exogenous insulin is sufficient to reactivate quiescent NBs. (A) A maximum intensity projection of one brain hemisphere showing Deadpan (Dpn) and Edu positive NBs after 24 h of culture in the presence of insulin. (B) A single Z slice image of the same brain hemisphere with Scribble (Scrib) immunostaining marking cell membranes. (C) High magnification of NB in the inset in panel B. Single-channel grayscale images with color merge bottom right. (D–F) NBs remain quiescent in the absence of exogenous insulin. (D) A maximum intensity projection of one brain hemisphere showing Dpn and Edu positive NB after 24 h of culture in the absence of insulin. (E) A single Z stack of the same brain hemisphere with Scrib immunostaining. (F) High magnification of NB in the inset in panel B. Single-channel grayscale images with color merge bottom right. Arrowhead denotes one of the 4 MB NBs, which divide continuously and do not enter and exit quiescence (refer to **Figure 1**). (G,H) Examples of damaged brain explants, not used in the analysis. (G) A single Z slice of one brain hemisphere with large holes in the tissue. (H) A single Z slice of a brain hemisphere shows small holes in the tissue. Scale bar: 10 µm. The white dashed line indicates the midline. Anterior is up, and posterior is down.

Table 1: Recipe for making grape plates. Follow the steps described in section 1.2.

Table 2: Recipe for making supplemented Schneider's media (SSM). The table lists the volume of all ingredients required for preparing 5 mL of SSM.

Table 3: Recipe for making fixative and PEM buffer. The table lists the chemicals and their respective concentrations for preparing fixative and PEM buffer.

DISCUSSION:

The method described here to culture brain explants can be carried out in most lab environments. The tools required, as well as the procedure and data collection, are simple and straightforward. With this method, one can test a variety of hypotheses, including those related to the cell signaling cascades and extrinsic factors that regulate NB reactivation and proliferation. Here, using wild-type OregonR animals, we found that exogenous insulin was sufficient to reactivate NBs from quiescence independent of other animal-specific systemic cues. Using the GAL4/UAS system, one could also knockdown or overexpress insulin pathway components in a cell type-specific manner to better understand the role of PI3-kinase signaling in NB reactivation. In addition to using genetics, the components in the media also could be manipulated to further test extrinsic cues or signals that promote NB reactivation and proliferation. For example, one could test the hypothesis that the addition of the steroid hormone ecdysone would increase the percentage of NB reactivation and proliferation in culture.

Although this method is straightforward, we experienced several technical difficulties early on. The first technical difficulty was damage to dissected, unfixed brains during media changes. We found that transferring brains to a new well of the culture dish instead of changing the media within the well resulted in less tissue damage because holes in brains arose when media was removed from the well and the explants stuck to the bottom of the well. To solve this problem, brains were transferred in solution using a pipette and, therefore, remained continuously submerged. Another technical aspect that was changed was the sterilization of dissecting tools. A mask and gloves were worn at all times. Ethanol (70%) was used to spray the dissection tools and dissection trays. This allowed for the bacterial load to be kept to a minimum. The steps before fixation should be performed in an environment as sterile as possible, preferably a sterile hood, and with precise and extremely gentle movements. The last difficulty we encountered was that the brains were sticky. Oftentimes brains would adhere to the inner walls of the pipette tip when we attempted to place them on the microscope slide for imaging. To fix this problem, we modified the brain transferring method between the microwell mini tray to the microscope slide as described above, filling the pipette tip with mounting media before aspirating the brain into the pipette tip. This method lubricated the pipette tip with the glycerol-based mounting media and greatly reduced sticking.

Methods to culture *Drosophila* brain explants have been published previously^{12,19–22}. A method published by Prithviraj et al. reports the culturing of late larval and early pupal brains. In this case, the steroid hormone ecdysone was added to the culture media and brains were maintained in culture for up to 10 h²⁰. Bobstock et al. report culturing of brains from late L1/early L2 animals and live imaging NBs for several hours in the ventral nerve cord. They also report difficulty in handling brains from young larvae²¹. Siller et al. report culturing larval brains and using live-cell imaging to assay spindle dynamics during neuroblast divisions in mid to late larval stages¹⁹. All methods published previously focus on time points after the freshly hatched larval stage before animal feeding, with one exception. In Britton et al., it is reported that NBs reactivate from quiescence when brain explants are co-cultured with fat body¹². Surprisingly, Britton et al. also report that exogenous insulin was not sufficient to reactivate quiescent NBs, in contrast to what is reported here. Hence, laying the foundation for the idea that a FBDS is required for NB reactivation. At the time of the Britton paper, NB specific molecular markers were not yet

available and it is clear that brain morphology is compromised after 3 days in culture. Here, we provide a straightforward method to reactivate NBs in brain explants by simply adding exogenous insulin to the culture media. One important note of caution is that the amount of insulin added to the culture far exceeds physiological conditions. High levels of insulin could lead to higher levels of PI3-kinase pathway activity in brain cell types *in vitro* compared to *in vivo* conditions.

Because the culture media can be easily manipulated by adding different factors, this technique can be used to address future hypotheses regarding extrinsic signaling and NB quiescence, entry and exit. This method could also be used for large scale screening, either RNAi or drug-based. For screening large scale, it would be best to use transgenic animals that express fluorescent reporters. This could allow one to bypass antibody staining, which is time-intensive. In general, after practice, one could set up 10 cultures of 3 brains each in 30 min. In a week, it may be reasonable to screen 150 different conditions.

ACKNOWLEDGMENTS:

We acknowledge the LSAMP Bridges to Doctorate program for funding (CNK) as well as NIH/NIGMS (R01-GM120421 and R35-GM141886). We are grateful to Dr. Conor Sipe for Figure 1. We also thank all Siegrist lab members for their continued support and mentorship. We especially thank Chhavi Sood and Gary Teeters for their careful reading of the manuscript and for providing comments.

DISCLOSURES:

The authors have no competing interests.

REFERENCES:

- 1 Suman, S., Domingues, A., Ratajczak, J., Ratajczak, M. Z. Potential clinical applications of stem cells in regenerative medicine. *Advances in Experimental Medicine and Biology*. **1201**, 1–22 (2019).
- 2 Tabar, V., Studer, L. Pluripotent stem cells in regenerative medicine: challenges and recent progress. *Nature Reviews Genetics*. **15**, 82–92 (2014).
- 3 Daley, G. Q. Stem cells and the evolving notion of cellular identity. *Philosophical Transactions of the Royal Society of London. Series B, Biological Sciences*. **370**, 20140376 (2015).
- 4 Rodrigues, M., Kosaric, N., Bonham, C. A., Gurtner, G. C. Wound healing: A cellular perspective. *Physiological Reviews*. **99**, 665–706 (2019).
- 5 van Velthoven, C. T. J., Rando, T. A. Stem cell quiescence: Dynamism, restraint, and cellular idling. *Cell Stem Cell*. **24**, 213–225 (2019).
- 6 Chapman, N. M., Boothby, M. R., Chi, H. Metabolic coordination of T cell quiescence and activation. *Nature Reviews Immunology*. **20**, 55–70 (2020).
- 7 Woszczyna, M. N., Rando, T. A. A muscle stem cell support group: Coordinated cellular responses in muscle regeneration. *Developmental Cell*. **46**, 135–143 (2018).
- 8 Homem, C. C., Knoblich, J. A. Drosophila neuroblasts: a model for stem cell biology. *Development*. **139**, 4297–4310 (2012).
- 9 Kang, K. H., Reichert, H. Control of neural stem cell self-renewal and differentiation in Drosophila. *Cell and Tissue Research*. **359**, 33–45 (2015).

- 10 Chell, J. M., Brand, A. H. Nutrition-responsive glia control exit of neural stem cells from
quiescence. *Cell*. **143**, 1161–1173 (2010).
- 11 Sousa-Nunes, R., Yee, L. L., Gould, A. P. Fat cells reactivate quiescent neuroblasts via TOR
and glial insulin relays in *Drosophila*. *Nature*. **471**, 508–512 (2011).
- 12 Britton, J. S., Edgar, B. A. Environmental control of the cell cycle in *Drosophila*: nutrition
activates mitotic and endoreplicative cells by distinct mechanisms. *Development*. **125**, 2149–
2158 (1998).
- 13 Lin, S. et al. Extremes of lineage plasticity in the *Drosophila* brain. *Current biology : CB*. **23**,
1908–1913 (2013).
- 14 Sipe, C. W., Siegrist, S. E. Eyeless uncouples mushroom body neuroblast proliferation from
dietary amino acids in *Drosophila*. *Elife*. **6**, eLife.26343 (2017).
- 15 Speder, P., Brand, A. H. Systemic and local cues drive neural stem cell niche remodelling
during neurogenesis in *Drosophila*. *Elife*. **7**, eLife.30413 (2018).
- 16 Yuan, X., Sipe, C. W., Suzawa, M., Bland, M. L., Siegrist, S. E. Dilp-2-mediated PI3-kinase
activation coordinates reactivation of quiescent neuroblasts with growth of their glial stem cell
niche. *PLoS Biology*. **18**, e3000721 (2020).
- 17 Colombani, J. et al. A nutrient sensor mechanism controls *Drosophila* growth. *Cell*. **114**,
739–749 (2003).
- 18 Geminard, C., Rulifson, E. J., Leopold, P. Remote control of insulin secretion by fat cells in
Drosophila. *Cell Metabolism*. **10**, 199–207 (2009).
- 19 Siller, K. H., Serr, M., Steward, R., Hays, T. S., Doe, C. Q. Live imaging of *Drosophila* brain
neuroblasts reveals a role for Lis1/dynactin in spindle assembly and mitotic checkpoint control.
Molecular Biology of the Cell. **16**, 5127–5140 (2005).
- 20 Prithviraj, R., Trunova, S., Giniger, E. Ex vivo culturing of whole, developing *Drosophila*
brains. *Journal of Visualized Experiments: JoVE*. **65**, 4270 (2012).
- 21 Bostock, M. P. et al. An immobilization technique for long-term time-lapse imaging of
explanted *drosophila* tissues. *Frontiers in Cell and Developmental Biology*. **8**, 590094 (2020).
- 22 Datta, S. Activation of neuroblast proliferation in explant culture of the *Drosophila* larval
CNS. *Brain Research*. **818**, 77–83 (1999).

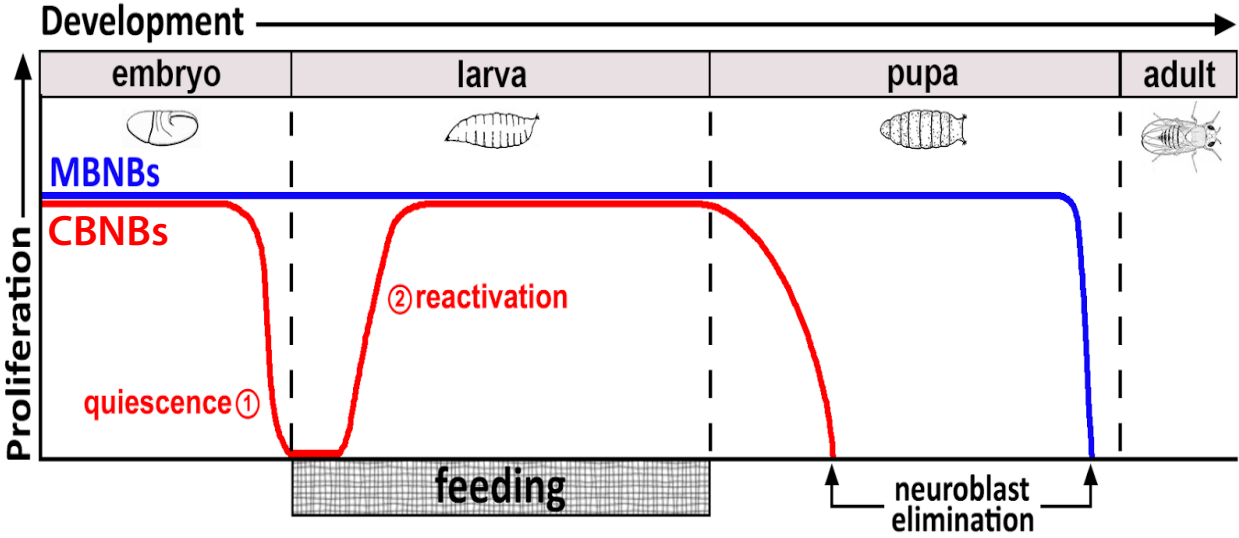
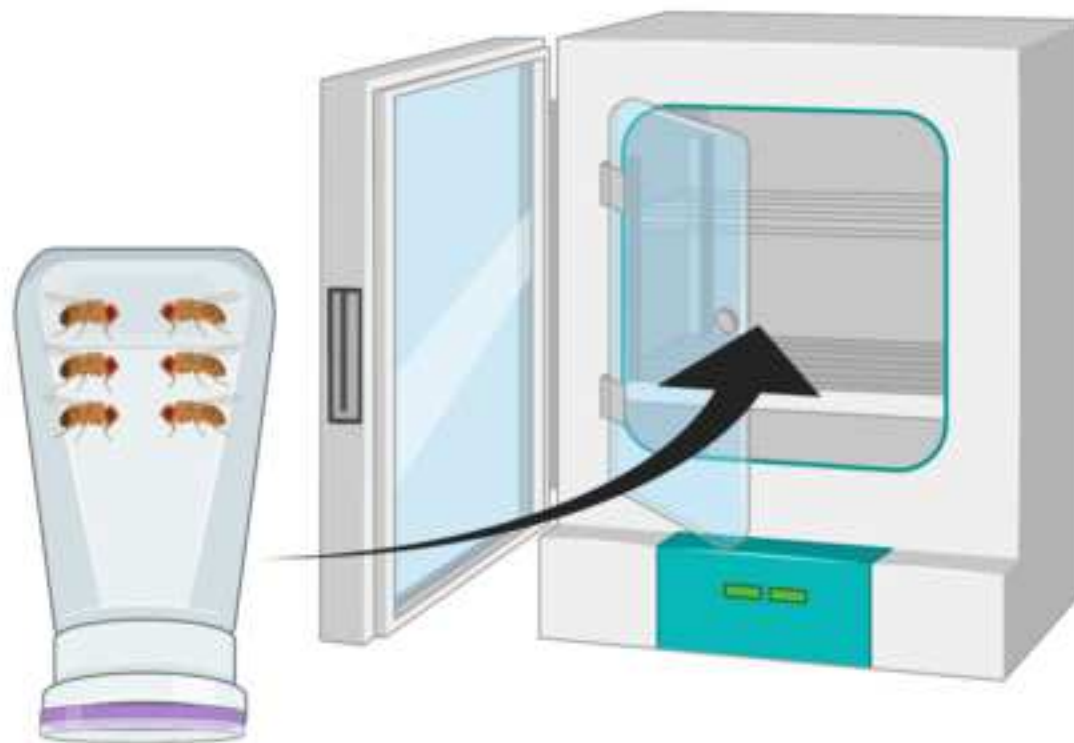
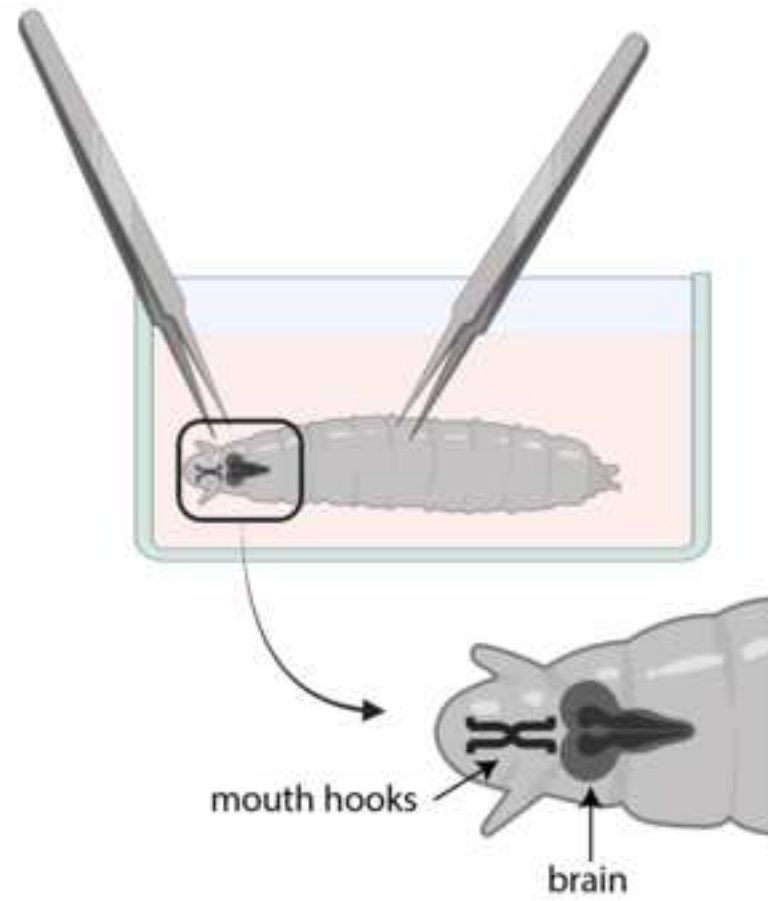
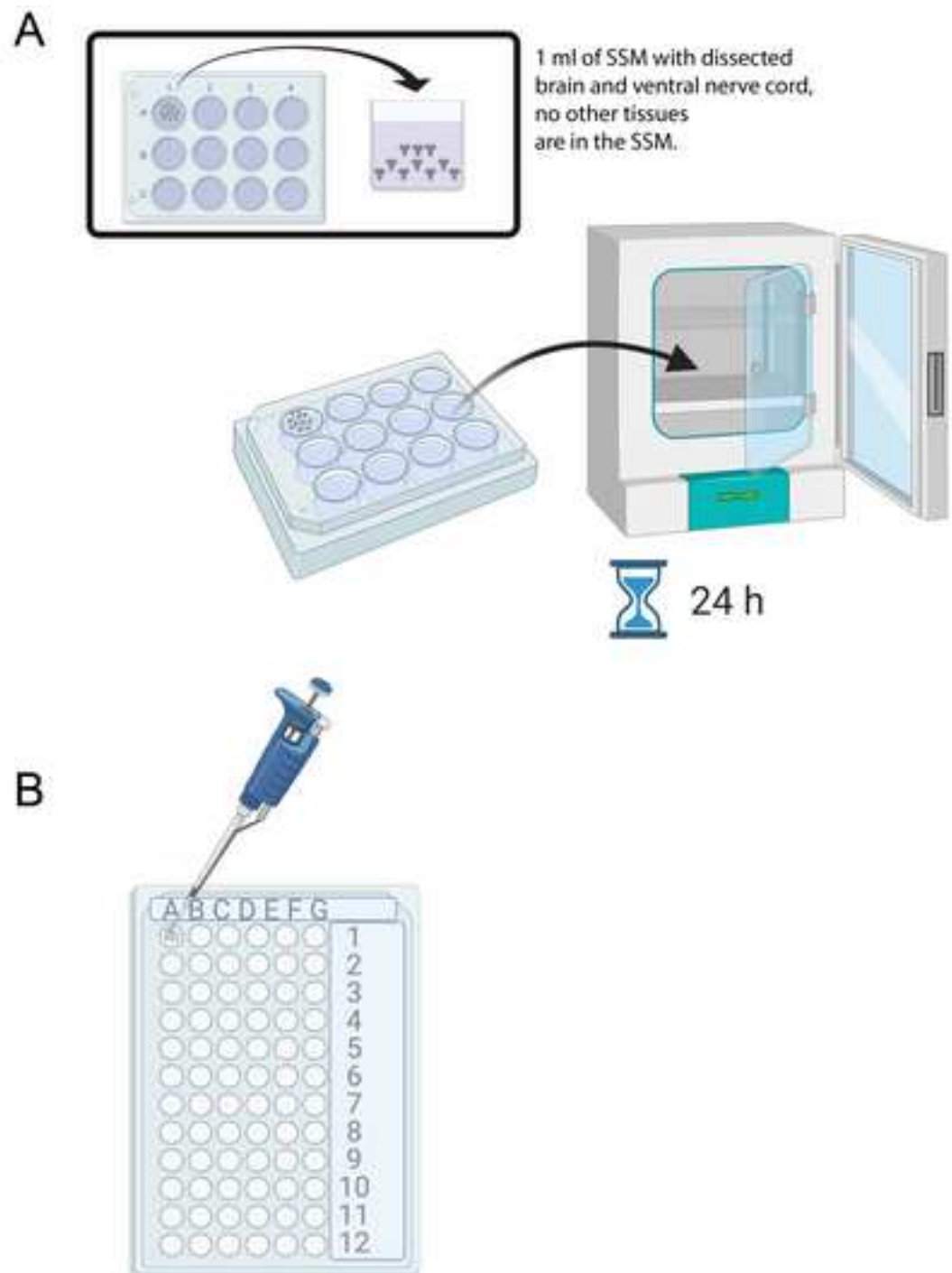


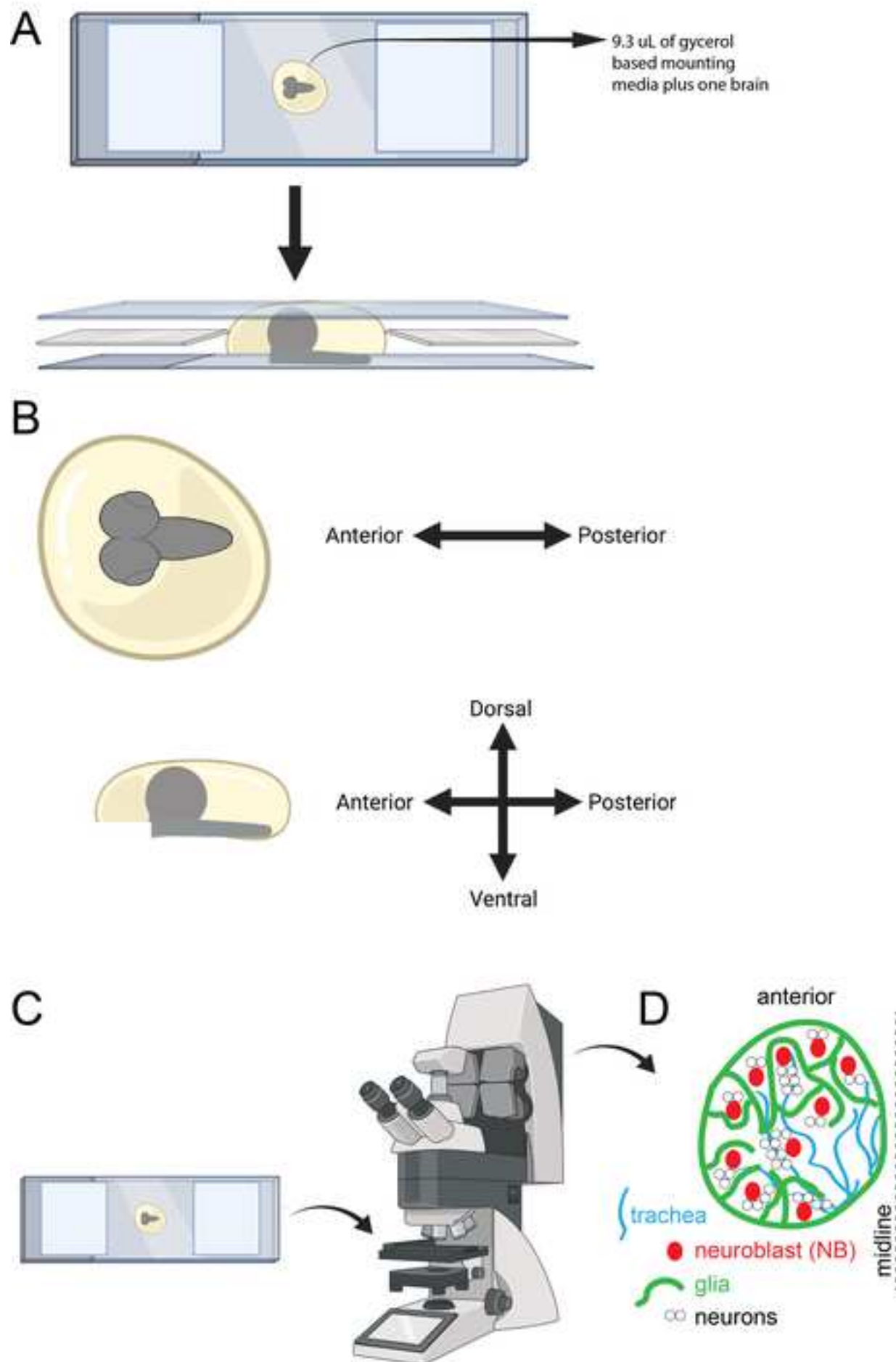
Figure 2

[Click here to access/download;Figure;Figure 2.png](#)









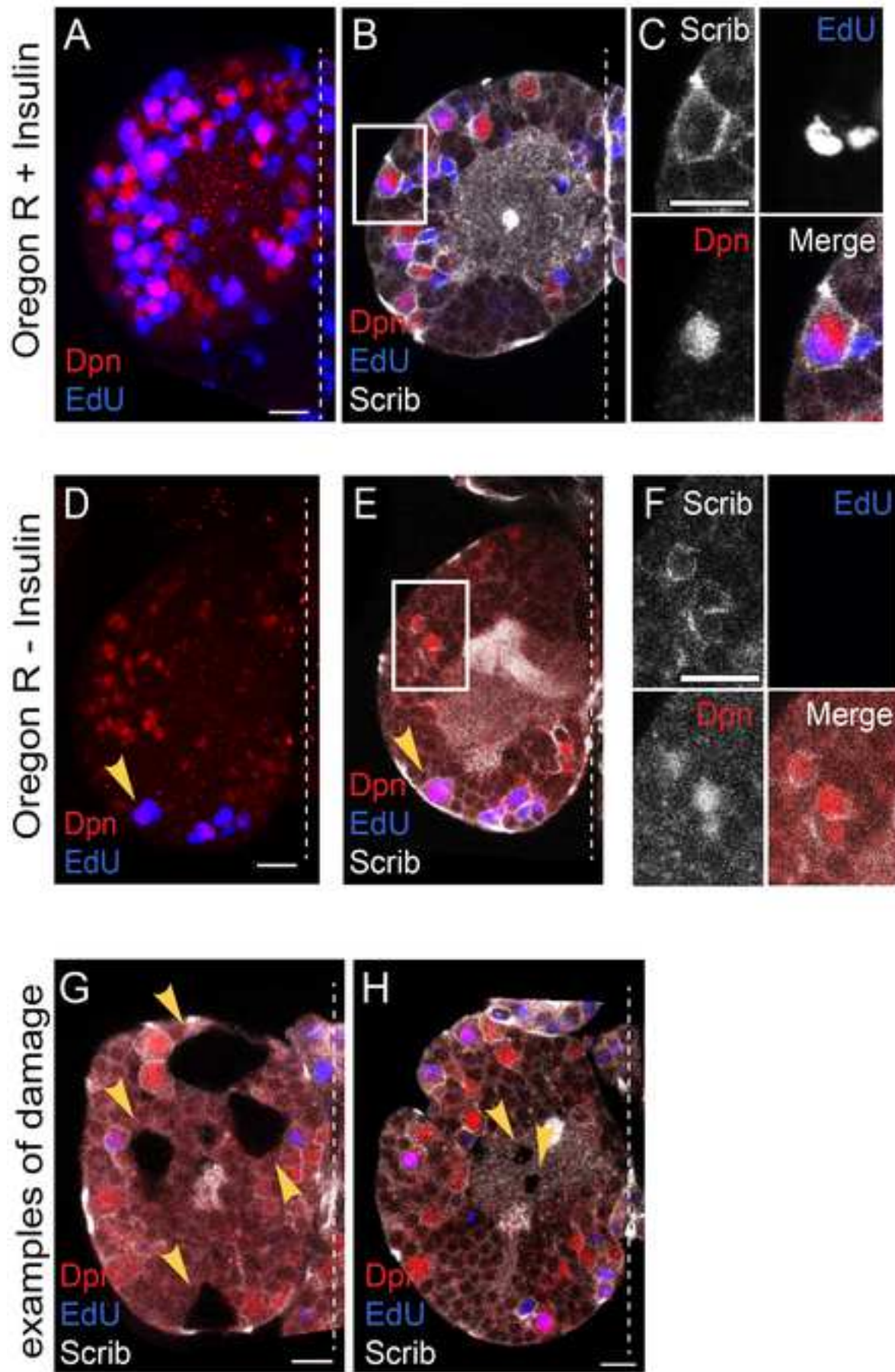


Table 1

Ingredient/Amount	1 L (~125 grape plates)
Grape juice	250 mL
Sucrose	25 g
Water	750 mL
Bacto Agar	18.75 g
Tegosept (10%)	4 mL
Propionic Acid	5 mL

Table 2:

Ingredient (starting concentration)	To make 5 mL	Final concentration
Schneider's Drosophila media	3.89 mL	
Fetal bovine Serum (100%)	500 μ L	10%
Glutamine (200 mM)	500 μ L	20 mM
Penicillin (5000 units/mL), Streptomycin (50,000 μ g/mL)	100 μ L	1000 U/mL Pen, 1 mg/mL Strep
Insulin (10 mg/mL)	10 μ L	0.02 mg/mL
glutathione (50 mg/mL)	5 μ L	0.05 mg/mL


In a sterile hood, using sterile technique, add all ingredients together in a 14 mL conical tube. Place it on ice until use.

Table 3

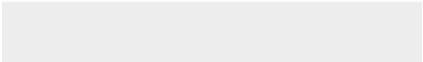

Recipe for making fixative		
Ingredient (starting concentration)	To make 40 mL	Final concentration
EM grade formaldehyde 16%	10 mL	4%
PEM buffer pH 7.0	29.96 mL	
Triton X-100	40 mL	0.10%

Mix all ingredients together. Aliquot 1 mL into microcentrifuge tubes and store at -20 °C. Do not refreeze the aliquots after thawing.

Recipe for PEM buffer		
Ingredient (starting concentration)	To make 100 mL	Final concentration
PIPES pH 6.8 (500 mM)	20 mL	100 mM
EGTA (500 mM)	2 mL	10 mM
MgSO ₄ (1 M)	100 mL	1 mM
Water	77.9 mL	



Click here to access/download
Table of Materials
Table of Materials-63189R1.xlsx



Please find attached our revised manuscript: "**Neural stem cell reactivation in cultured *Drosophila* brain explants**" by Cami Naomi Keliinui, Susan E. Doyle, and Sarah E. Siegrist.

We very much appreciate the comments provided by the reviewers and editor and hope we have made the necessary changes. Below is a response or in most cases a check (**Done**) to indicate the changes made in response to comments. We are happy to make further changes if needed.

1. Please take this opportunity to thoroughly proofread the manuscript to ensure that there are no spelling or grammar issues.

Done

2. For in-text formatting, corresponding reference numbers should appear as numbered superscripts after the appropriate statement(s) before punctuation.

Done

3. Please define all abbreviations upon first use. For example, Pen, Strep, etc.

Done

4. JoVE cannot publish manuscripts containing commercial language. This includes trademark symbols (™), registered symbols (®), and company names before an instrument or reagent. Please remove all commercial language from your manuscript and use generic terms instead. All commercial products should be sufficiently referenced in the Table of Materials.

For example: falcon, Gilson P1000 Pipetman®, Nunc™ Microwell™ MiniTray, Fisher Scientific, 12-565-154, Parafilm M®, Kim wipes™, Alexa Fluor™, Click-iT™ Alexa Fluor™ 647 Imaging Kit, Thermo Fisher Scientific, C10340, etc.

Done

5. Please revise the Introduction to include all of the following:

a) The rationale behind the development and/or use of this technique **Done**

b) The advantages over alternative techniques with applicable references to previous studies **Done**

c) Information to help readers to determine whether the method is appropriate for their application **Done**

6. Use SI units as much as possible and abbreviate all units: L, mL, µL, cm, kg, etc. Use h, min, s, for hour, minute, second.

Done

7. Please revise the text to avoid the use of any personal pronouns (e.g., "we", "you", "our" etc.).

Done (minus the "we", please let me know if you want me to get rid of all the "we"s).

8. Please consider providing reaction set-ups and solution compositions as Tables in separate .xls or .xlsx files uploaded to your Editorial Manager account. These tables can then be referenced in the protocol text.

Done

9. Please add more details to your protocol steps. Please ensure you answer the "how" question, i.e., how is the step performed?

Done

Step 1.1.1: How much is 1 T yeast? In how much water was it mixed? **Done**

Step 1.1.8: What kind of plates were used as grape plates? Were they Petri dish or any other kind of specially made plates? **Done**

Step 1.4: Please elaborate on the steps for using the dissecting microscope and picking the larvae providing all instrument settings and parameters. **Done**

Step 1.5: How is the proper picking of the larvae ensured? **Done**

Step 4.6, 4.9: How much primary, secondary antibody was added? **Done**

Step 4.10: Was the incubation overnight or for 24 h? Please clarify. **Done**

Step 6,7: If this step needs to be filmed, please make sure to provide all the details such as “click this”, “select that”, “observe this”, etc. Please mention all the steps that are necessary to execute the action item. Please provide details so a reader may replicate your analysis including buttons clicked, inputs, screenshots, etc. Please keep in mind that software steps without a graphical user interface (GUI) cannot be filmed. Also, please mention the excitation and emission wavelengths clearly along with pinhole value, type of detector used and any other parameter or image settings. **Done** (pin hole and detector type are not necessary)

10. Please include a single line space between each step, substep, and note in the protocol section. Please highlight up to 3 pages of the Protocol (including headings and spacing) that identifies the essential steps of the protocol for the video, i.e., the steps that should be visualized to tell the most cohesive story of the Protocol. Remember that non-highlighted Protocol steps will remain in the manuscript, and therefore will still be available to the reader. **Done**

11. Please ensure that all the Figures are referenced sequentially in the manuscript text. **Done**

12. Please modify the Result section to include all the observations and conclusions you can derive from the Figures. The Results section should focus on the effectiveness of your technique backed up with data. **Done**

13. Please reduce the number of Figures to 5-6. Please combine some of the Figures from 1-6 and designate them as (A), (B), etc. in the same Figure. **Done**

14. As we are a methods journal, please revise the Discussion to explicitly cover the following in detail in 3-6 paragraphs with citations: **Done**

- a) Critical steps within the protocol
- b) Any modifications and troubleshooting of the technique
- c) Any limitations of the technique
- d) The significance with respect to existing methods
- e) Any future applications of the technique

15. Please ensure that the references appear as the following: [Lastname, F.I., LastName, F.I., LastName, F.I. Article Title. Source. Volume (Issue), FirstPage – LastPage (YEAR).] For more than 6 authors, list only the first author then et al. Please do not abbreviate the Journal Titles. **Done**

Reviewers' comments:

Reviewer #1:

This manuscript and protocol describe a way to culture early larval Drosophila brains prior to most neuroblasts exiting quiescence. Thus, this method can be used to identify extrinsic signals that regulate exit from quiescence, e.g. by adding back candidate factors and assaying for proliferation.

The method appears simple and robust. The prior pitfalls are listed along with the solutions, which will help in making this a successful method in other labs. I endorse publication following minor comments below.

1. A new figure should show a schematic of the cells present in the brain explant (neuroblasts, glia, etc) and the relevant cells that are NOT present in the explant (fat body, other?).

Great idea! We have now included a new panel in figure Fig 5D and better language in Fig. 4A.

2. A new figure should diagram the insulin signaling pathway with a clear demarcation of when the pathway is extrinsic to the neuroblasts and when it is intrinsic to the neuroblast. **I am not sure exactly what you are asking for and I apologize if this is not the response you are looking for. There are a number of papers that we cite**

that report that Dilps (which are the insulin like peptides in *Drosophila*) are released from both neurons and glia in response to nutrition (feeding). Somehow Dilps bind to the insulin receptor expressed on neuroblasts leading to downstream activation of PI3-kinase in NBs. There are a number of cartoon like figures in work published by other that show this. These figures mostly appear in review type articles. We did not include this here because this is a methods paper and not a review article.

3. If the fat body is not in the explant, perhaps a short discussion on how fractionating the fat body could identify the elusive FBDS. We have rewritten significant parts of the manuscript. We have included more discussion on the FBDS. One thing to think about now, is whether the FBDS even exists given the fact the NBs reactivate in the absence of the fat body, unless the FBDS is one of the *Drosophila* insulin like peptides, which is certainly a possibility.

4. The list of prior larval brain culture papers should include PMID: 28394252

Thank you very much for your comment. This paper that you refer to references Siller et al which we now include in our reference list.

Reviewer #2:

This methods paper by Siegrist and colleagues reports an explant protocol for study of the *Drosophila* brain. Particular emphasis is placed on using insulin to transition brain early larval stage neuroblasts from quiescence to a cycling state. Overall, the protocol is very easy to follow and the figures are very nice. The following comments should be addressed by the authors prior to publication:

1. As the authors note at the very end, there are other similar papers out there on this topic. These should be mentioned much earlier in the paper (introduction section) and should then immediately be followed by discussion of how this protocol expands/improves upon these protocols. Thank you very much for your comment. We totally agree and apologize for not doing a better job in the beginning. We have now included a more extensive paragraph in the discussion to distinguish our work from previously published work.

2. The authors should clearly note the caveats of studying cultured tissue explants vs. immediate fixation of tissue, as well as caveats of adding exogenous insulin to the explants (e.g. this can promote premature cell cycle transitions). These caveats can caution users of the protocol against making certain conclusions about e.g. cell cycle rates. Thank you for your comment. We have included a sentence of caution with using excess insulin in cultures and interpretation of results.

3. The authors should note how long explants can survive before the onset of tissue degeneration or aberrant cell biology. Great! Thanks for reminding us. We can keep brains in culture without holes for 48 hours so far. We included this fact in the manuscript.

4. The authors should discuss the limits of scaling the protocol up for screening. In particular, how many explants of how many lines can a single person process per unit time? Got it! We added this to the discussion.

5. The authors should briefly discuss insulin-independent methods used by Suzanne Eaton's lab in imaginal discs, which found differences between Ecdysone culturing and insulin culturing (PMID: 29038308). Is this an important consideration when examining brain tissue? Why or why not? Thanks for your question. The point of this manuscript is to reactivate neuroblasts in culture. We do this and what is surprising is that we do it independent of the fat body. Whether ecdysone would promote or inhibit neuroblast reactivation remains an open question. Remember, reactivation from quiescence is occurring at a very early time point, well before the big peaks of ecdysone which are seen in later larval and pupal stages.

6. Videos- in the videos, please make sure to clearly highlight how much brain and surrounding tissue is retained or removed. It would also be helpful to have some supporting text discussing this. **OK! will do.**

7. Materials table- please add yeast paste to the table. **Done**

8. References- the following seem relevant to this manuscript: **Added both! Thanks!**

a. Datta S. Activation of neuroblast proliferation in explant culture of the Drosophila larval CNS. Brain Res. 1999 Feb 6;818(1):77-83. PMID: 9914440

b. Siller KH, Serr M, Steward R, Hays TS, Doe CQ. Live Imaging of Drosophila Brain Neuroblasts Reveals a Role for Lis1/Dynactin in Spindle Assembly and Mitotic Checkpoint Control. Mol Biol Cell. 2005 Nov;16(11):5127-5140. PMCID: PMC1266413