

Journal of Visualized Experiments

DUCT: DoUble resin casting followed by micro-Computed Tomography for 3D liver analysis --Manuscript Draft--

Article Type:	Methods Article - JoVE Produced Video
Manuscript Number:	JoVE62941R2
Full Title:	DUCT: DoUble resin casting followed by micro-Computed Tomography for 3D liver analysis
Corresponding Author:	Emma R Andersson Karolinska Institutet Solna, Stockholm SWEDEN
Corresponding Author's Institution:	Karolinska Institutet
Corresponding Author E-Mail:	Emma.Andersson@ki.se
Order of Authors:	<div>Simona Hankeova</div> <div>Jakub Salplachta</div> <div>Noemi Van Hul</div> <div>Michaela Kavkova</div> <div>Afshan Iqbal</div> <div>Tomas Zikmund</div> <div>Jozef Kaiser</div> <div>Emma R Andersson</div>
Additional Information:	
Question	Response
Please specify the section of the submitted manuscript.	Biology
Please indicate whether this article will be Standard Access or Open Access.	Open Access (\$3900)
Please indicate the city, state/province, and country where this article will be filmed . Please do not use abbreviations.	Stockholm/Sweden, Brno/Czech Republic
Please confirm that you have read and agree to the terms and conditions of the author license agreement that applies below:	I agree to the Author License Agreement
Please provide any comments to the journal here.	
Please confirm that you have read and agree to the terms and conditions of the video release that applies below:	I agree to the Video Release

TITLE:

DUCT: Double Resin Casting Followed by micro-Computed Tomography For 3D Liver Analysis

AUTHORS AND AFFILIATIONS:

Simona Hankeova^{1*}, Jakub Salplachta^{2*}, Noemi Van Hul¹, Michaela Kavkova², Afshan Iqbal¹,
Tomas Zikmund², Jozef Kaiser^{2#}, Emma R. Andersson^{1#}

¹Karolinska Institutet, Stockholm, Sweden

²Central European Institute of Technology, Brno, Czech Republic

*S Hankeova and J Salplachta contributed equally to this manuscript.

Email addresses of co-authors:

Simona Hankeova	(simona.hankeova@ki.se)
Jakub Salplachta	(jakub.salplachta@ceitec.vutbr.cz)
Noemi Van Hul	(noemi.van.hul@ki.se)
Michaela Kavkova	(michaela.kavkova@ceitec.vutbr.cz)
Afshan Iqbal	(afshan.iqbal@ki.se)
Tomas Zikmund	(tomas.zikmund@ceitec.vutbr.cz)
Jozef Kaiser	(jozef.kaiser@ceitec.vutbr.cz)
Emma R. Andersson	(emma.andersson@ki.se)

#Corresponding authors:

Correspondence regarding resin casting:	Emma R. Andersson	(emma.andersson@ki.se)
Correspondence regarding microCT:	Jozef Kaiser	(kaiser@fme.vutbr.cz)

SUMMARY:

Double resin casting micro-computed tomography, or DUCT, enables visualization, digitalization, and segmentation of two tubular systems simultaneously to facilitate 3D analysis of organ architecture. DUCT combines *ex vivo* injection of two radiopaque resins followed by micro-computed tomography scanning and segmentation of the tomographic data.

ABSTRACT:

The liver is the biggest internal organ in humans and mice, and high auto-fluorescence presents a significant challenge for assessing the three-dimensional (3D) architecture of the organ at the whole-organ level. Liver architecture is characterized by multiple branching lumenized structures, which can be filled with resin, including vascular and biliary trees, establishing a highly stereotyped pattern in the otherwise hepatocyte-rich parenchyma. This protocol describes the pipeline for performing double resin casting micro-computed tomography, or “DUCT”. DUCT entails injecting the portal vein and common bile duct with two different radiopaque synthetic resins, followed by tissue fixation. Quality control by clearing one lobe, or the entire liver, with an optical clearing agent, allows for pre-screening of suitably injected samples. In the second part of the DUCT pipeline, a lobe or the whole liver can be used for micro-computed tomography (microCT) scanning, (semi-)automated segmentation, and 3D rendering of the portal venous and

biliary networks. MicroCT results in 3D coordinate data for the two resins allow for qualitative as well as quantitative analysis of the two systems and their spatial relationship. DUCT can be applied to postnatal and adult mouse liver and can be further extended to other tubular networks, for example, vascular networks and airways in the lungs.

INTRODUCTION:

Organ resin casting is a technique that dates back to the 17th century¹. One of the first examples of modern resin casting was performed on the human liver from an autopsy. Intrahepatic bile ducts were filled with a contrast agent mixed with gelatin, followed by imaging with an x-ray CT scan². The aim of the DUCT technique is to visualize, digitalize and analyze two tubular resin-casted networks, in tandem, in 3D.

DUCT is based on the extensive existing knowledge of single-system liver resin casting^{3–8} and extends to simultaneous 3D visualization and analysis of two systems⁹. DUCT advanced single resin casting to double resin casting by mixing two radiopaque resins of different contrast and injecting these resins into two different networks, specifically the common bile duct and portal vein. DUCT can be applied to young postnatal mice with reproducible results as early as postnatal day 15 (P15). Compared to microscopy-based imaging techniques, the main advantage is that DUCT is faster, antibody-free, and liver tissue autofluorescence does not interfere with imaging. Further, DUCT provides quantitative data describing lumenization status, internal diameter, network connectivity, and perfusion. Differentiating between the presence of lumen-forming cells and their de facto morphogenesis into tubes is essential for analyzing organs in which ductular cells are present but do not form tubes, as can be the case in Alagille syndrome¹⁰. The main disadvantage of DUCT is the limited penetration of the resin, which is viscous and does not enter tubes with a small caliber ($<5\ \mu\text{m}$). DUCT can be applied for any tubular structure after determining the injection entry point, such as the arterial and venous circulatory systems, airways, the extrahepatic bile duct, or lymphatic vessels. It could thus facilitate whole organ architecture analysis of other tissues such as lungs and pancreas.

MicroCT segmented images can be processed using commercially available imaging software, such as ImageJ, or custom-written pipelines (e.g., MATLAB). The resin-injected liver can be analyzed qualitatively for network expansion and connectivity or quantitatively for volume, length, branching, tortuosity of a single system, and the interaction between two systems such as the distance between two systems, or branchpoint dependence (does system 1 branch in proximity to system 2 branching?). The DUCT pipeline encompassing resin injection, microCT scanning, and CT data segmentation, combined with detailed quantitative analysis of architectural mechanisms of two tubular systems, could provide a standard for whole liver analysis in animal models.

PROTOCOL:

The protocol described in this study was approved and follows the animal welfare rules and regulations of the Stockholms Norra Djurförsöksetiska nämnd (Stockholm animal research ethics board). The animals used in this study were wild type or homozygous Jag1H268Q mutant mice

on a mixed C3H/N and C57bl6J background. Both males and females were included in the study. The animals were used at postnatal day 15 or as adults between 3 – 8 months.

1. Double resin injections

1.1. Preparation

1.1.1 Prepare resin solution. For double system resin injections, prepare both yellow and green resins as described in the steps 1.1.2–1.1.4.

1.1.2 Prepare 1 mL aliquots of diluted resin per mouse.

1.1.3 Yellow Resin: Dilute yellow silicone rubber (high radiopacity) with the clear diluent in a 3:1 dilution to prepare yellow resin for injection.

1.1.4 Green Resin: Mix blue silicone rubber (undetectable radiopacity) with the clear diluent in a 1:1 dilution to prepare blue resin. To generate green resin, mix the diluted blue resin with the diluted yellow resin at a ratio of 1:1. Vortex the green resin thoroughly until the color is homogeneous.

NOTE: Blue resin has very low radiopacity that is not detectable with microCT, which therefore necessitates dilution with yellow resin to create two resins with different radiopacities.

CAUTION: Resin may contain lead chromate, which is a carcinogen. It produces poisonous gases in a fire. Handle with care and dispose of the resin as hazardous waste.

1.1.5 Prepare two injection sets (injection set #1 and injection set #2) with tubing as described in the steps 1.1.6–1.1.11.

NOTE: For adult mice (>P30 (postnatal day 30) = P30 – 2 years), use injection set #1 (PE10 tubing with 0.6 mm outer diameter) for common bile duct injection and injection set #2 (PE50 tubing with 0.96 mm outer diameter) for portal vein injection. For young postnatal mice (up to P30), prepare two #1 injection sets, one for bile duct and one for portal vein injection (no injection set #2 as the portal vein is too narrow to accommodate PE50 tubing).

1.1.6 To prepare injection set #1, cut 30 cm of PE10 tubing and stretch one end of the tubing by hand by pulling it until it becomes as thin as possible (**Figure 1A,B**, approximately 0.15 mm diameter, non-stretched PE10 tubing is 0.6 mm diameter).

1.1.7 Cut the tip of the stretched PE10 tubing diagonally to create a beveled tip (**Figure 1B**).

1.1.8 Connect the non-stretched end of the PE10 tubing to a 30 G needle (**Figure 1A**, Injection set #1).

1.1.9 To prepare injection set #2, cut 30 cm of PE50 tubing and stretch one end of the tubing by hand by pulling it until it becomes thin enough to fit into the portal vein (**Figure 1A,B**, approximately 0.7 mm, non-stretched PE50 tubing is 0.96 mm diameter).

1.1.10 Cut the tip of the stretched PE50 tubing diagonally to create a beveled tip (**Figure 1B**).

1.1.11 Connect the non-stretched end of the PE50 tubing to a 23 G needle (**Figure 1A**, injection set #2).

NOTE: Each injection set can only be used for one injection since the resin will harden in the syringe and tubing. Adjust the size of the stretched and beveled tip based on the size of the common bile duct and portal vein of the mouse, depending on its age, genotype, and phenotype. When unsure about the size and fit of the tubing, insert the tubing in the appropriate duct or vessel after the incision and before the tubing is filled with resin. If the tubing is too wide to fit in the duct/vessel, stretch it further.

1.1.12 Anesthetize the animal by isoflurane inhalation (first 4% in the induction chamber and ~2% using the nose cone).

1.1.13 Place the mouse on a ventilated bench on a dissection pad while the mouse is breathing isoflurane through the nose cone. Verify that the animal is unconscious by an institute/IRB-recommended method, e.g., by pinching one of the paws.

CAUTION: Isoflurane may cause drowsiness or dizziness upon inhalation and may cause damage to the cardiovascular system and central nervous system through prolonged or repeated exposure. Do not inhale it. Handle the substance on a ventilated bench and in well-ventilated areas.

NOTE: It is possible to use another anesthetizing method, as long as it is compatible with cardiac perfusion.

1.1.14 Once the animal is unconscious, spray the ventral side with 70% ethanol to prevent interference from fur.

1.1.15 Using skin scissors, cut the skin, fascia, and muscle layer starting at the midline of the abdominal cavity and cut through to the thoracic cavity to expose the internal organs.

1.1.16 Grab the xiphoid process with forceps to lift the sternum and cut the diaphragm and rib cage on both sides to expose the heart and lungs.

1.1.17 Remove the rib cage by cutting through the ribs on the left and right sides of the ribcage with scissors. Take extra care not to damage the liver as this will result in leakage of the resin.

1.1.18 Using straight forceps, pull the heart towards the liver and cut away the right atrium.

1.1.19 Insert a butterfly needle (23 G), connected to a peristaltic perfusion pump, into the left ventricle. Perfuse the mouse transcardially with Hanks balanced salt solution (HBSS) and heparin (1 U/g of mouse body weight). Perfuse for 3 min with a perfusion rate of 5 mL/min.

NOTE: If the mouse is being perfused correctly, the internal organs will become pale, especially the liver. If, instead, the lungs are turning white, the needle is inserted into the right ventricle and should be repositioned.

1.1.20 After perfusion, exsanguinate the mouse and remove it from the nose cone and isoflurane. Turn off the isoflurane pump.

1.2. Resin injection - Biliary system resin casting

1.2.1. Move the mouse to the dissection microscope, abdomen up, tail towards the experimenter, and head away from the experimenter. The anatomical landmarks of interest are depicted in **Figure 2A**.

1.2.2. Locate the inferior vena cava (**Figure 2A**) by moving the intestine to the side. Use spring scissors to make a small transversal incision in the inferior vena cava to allow the release of hepatic vascular pressure (**Figure 2Bi**).

1.2.3. Expose the common bile duct and portal vein as described in steps 1.2.4– 1.2.6.

1.2.4. Move the intestine and pancreas to the right side (of the experimenter) using a phosphate-buffered saline (PBS)-wetted cotton swab.

1.2.5. Flip the ventral side of the liver towards the heart using the PBS-wetted cotton swab to expose the visceral surface and the hilar region.

1.2.6. Locate the common bile duct that runs from the hilar region across the pancreas and into the intestine at the sphincter of Oddi (**Figure 2Bii**, common bile duct outlined with the yellow dotted line, black arrowheads point to Sphincter of Oddi).

NOTE: Make sure the liver is moist throughout the procedure by sprinkling it with PBS.

1.2.7. Clear surrounding tissue (area ~ 5 mm) from the common bile duct using straight forceps. Place silk suture thread (size 4-0, 0.17 mm, 3 – 5 cm long) under the common bile duct (**Figure 2Bii**) and tie a loose overhand knot around the common bile duct (**Figure 2Biii**).

NOTE: Choose an area for the knot halfway between the hilar region and the sphincter of Oddi and at some distance from the portal vein so that after the suture is tightened around the common bile duct, it will not interfere with the portal vein injection.

1.2.8. Hold the spring scissors flat against the common bile duct to make an oblique incision to the common bile duct at the spot where the common bile duct enters the pancreas and intestine next to the sphincter of Oddi. (Figure 2Biv), yellow dotted line outlines the sphincter of Oddi region, emphasized by black arrowheads).

NOTE: This is a crucial step. Make an oblique and not a transversal cut, and make an incision, not sever the bile duct. Cutting through the entire bile duct makes insertion of the tubing very challenging.

1.2.9. Just before use, mix 1 mL of the yellow resin with 50 μ L of the curing agent (MV-Curing agent) (by filling and emptying the 1 mL syringe) and fill a 1 mL Luer syringe with the resin – curing agent mixture.

1.2.10. Connect the filled syringe with the tubing (set #1). Press the plunger to fill the tubing completely. Ensure that the resin/curing agent mix drips from the tip of the tubing.

NOTE: Avoid and remove bubbles in the syringe and tubing for best results.

1.2.11. Using forceps, straighten the area around the common bile duct incision and insert the tubing into the opening in the common bile duct (Figure 2Bv), with the longest edge of the beveled tip downwards towards the dorsal side of the bile duct. This orientation ensures that resin can exit the tubing opening, which is facing upwards, into the duct (Figure 2Bv).

1.2.12. Tighten the silk thread knot to secure the tubing inside the common bile duct (Figure 2Bvi).

1.2.13. Inject the resin into the common bile duct. Observe the gall bladder and the individual liver lobes.

1.2.14. Massage the liver with a PBS-wetted cotton swab to help spread the resin equally. Resin-filled bile ducts terminal branches (in wild-type mice) are faintly visible at the liver surface.

NOTE: Expected time to fill the liver is 30 –100 s.

1.2.15. Stop injecting the resin when dots of resin appear at the surface of the liver (Figure 2Ci, blue arrowheads) or when resistance is met.

NOTE: Work as fast as possible since the resin begins to harden after adding the resin curing agent. The working time from adding the curing agent is approximately 15 min.

1.2.16. Remove the tubing by pulling it out of the common bile duct and quickly tighten the silk knot using forceps to prevent the resin from leaking out. Cut away the loose ends of the silk suture, so they do not interfere with the portal vein injection.

1.2.17. Dispose of the tubing containing resin and the remaining resin into the hazardous waste and the needle into the sharps waste.

1.3. Resin injection - Portal vein resin casting

1.3.1. Clear the portal vein (area ~5 mm) from its surrounding tissue about 2 cm from its entry to the liver using straight forceps. Place silk suture thread (size 4-0, 0.17 mm, 3 – 5 cm long) under the cleared area of the portal vein (Figure 2Ci) and tie a loose overhand knot (Figure 2Cii).

1.3.2. Make a longitudinal incision in the portal vein distal to the liver and the knot (Figure 2Ciii).

1.3.3. Mix 1 mL of the green resin with 50 µL of the curing agent (by filling up and emptying 1 mL syringe) and fill a 1 mL Luer syringe with the resin–curing agent mixture.

1.3.4. Connect the filled syringe with the tubing (set #2 for >P30 mice, new set #1 for <P30 mice). Press the plunger to fill the tubing completely. Ensure that the resin drips from the tip of the tubing.

NOTE: Avoid and remove bubbles in the syringe and tubing for best results.

1.3.5. Using forceps, straighten the portal vein by pulling the surrounding tissue towards the experimenter and insert the tubing with the longest edge of the beveled tip towards the dorsal side of the vessel (Figure 2Ciii).

1.3.6. Tighten the silk thread to secure the tubing in the portal vein.

1.3.7. Inject the resin into the portal vein. Observe the blood vessels filling up with resin. Massage the liver with a PBS-wetted cotton swab to help spread the resin equally (Figure 2Civ).

1.3.8. Stop injecting the resin when all blood vessels are filled (ends of portal veins are visible at the liver periphery) or when resistance is met.

NOTE: Work fast since the resin begins to harden after the addition of the curing agent. The working time from adding the curing agent is approximately 15 min for injection set#1 and 25 min for injection set #2.

1.3.9. Remove the tubing by pulling out the tubing from the portal vein and quickly tighten the silk knot using forceps to prevent the resin from leaking out.

1.3.10. Dispose of the tubing containing resin and the remaining resin into the hazardous waste and the needle into the sharps waste.

1.4. Liver dissection and fixation

1.4.1. Dissect out the whole liver by cutting it away from the surrounding tissue and the diaphragm.

1.4.2. Gently place the whole liver in an empty 50 mL conical tube with the ventral side facing up and the dorsal side resting on the wall of the conical tube to prevent deformation of the liver. Store the conical tube horizontally overnight at 4 °C for the resin to harden completely.

NOTE: Any container that is big enough to fit the liver can be used instead of 50 mL conical tube. Using a flat bottom container will increase the likelihood that the liver is not deformed.

1.4.3. Separate the liver into individual lobes. Make a selection of the lobes that will be used for microCT analysis (1.4.4–1.4.5) or quality control (1.4.6–1.4.8). Optionally use the whole liver for both optical clearing and microCT without separating it into individual lobes.

NOTE: Liver architecture of the biliary and vascular systems is different in each lobe, and matched lobe analyses are therefore required. The optical clearing does not interfere with microCT scanning, and the lobe(s) used for quality control can be subsequently scanned with microCT. Conversely, samples scanned with microCT can be subsequently optically cleared for comparison. The whole liver analysis is thus possible. In wild-type mice (C3H/C57bl6 genetic background), the right medial lobe is filled first by resin injections, making this a suitable lobe for microCT analysis, with the highest reproducibility. The left lateral lobe is the biggest lobe, in which it is therefore straightforward to pre-screen for injection quality. The selection of the lobe (or whole liver) used for quality control and microCT scanning is dependent on the animal model and research question.

1.4.4. In a ventilated hood, prepare 4% formaldehyde solution (10 –20 mL per tube). Fix the lobes used for microCT with 4% formaldehyde overnight at 4 °C and afterward wash once with PBS (10 –20 mL per tube).

1.4.5. Collect formaldehyde waste in a separate container. Keep the liver lobes in PBS at 4 °C for short-term storage or 70% ethanol for long-term storage. Proceed with section 2: Micro-computed tomography.

CAUTION: Formaldehyde causes acute toxicity if swallowed, inhaled, or in contact with skin. Formaldehyde is a flammable liquid and vapor. It causes severe skin burns and eye damage. May cause an allergic skin reaction. Fatal if inhaled (concentrated or in powder). May cause respiratory irritation. Suspected of causing genetic defects. May cause cancer. Causes damage to organs (eyes, central nervous system). Precautionary statements - keep away from heat, hot surfaces, sparks, open flames, and other ignition sources. No smoking. Wear protective gloves and protective clothing. In case of spillage, immediately take off all clothing that was contaminated. If in contact with the skin: rinse the contaminated area with water. If inhaled: remove person to fresh air and monitor breathing if comfortable. Immediately call a poison center/ doctor. If in eyes: rinse eyes with water for several minutes. If present and possible, remove contact lenses.

1.4.6. For quality control, fix the remaining lobes (at least one) with 50% methanol (mixed with deionized water) for a minimum of 4 h, rocking at room temperature, followed by 100% methanol overnight rocking at room temperature. Collect methanol waste in a separate container.

CAUTION: Methanol causes acute toxicity if swallowed, inhaled, or in contact with skin. Methanol is a flammable liquid and vapor. Wear protective gloves and clothing. Avoid breathing when handling and keep away from fire and heat. Wash skin thoroughly after using. In case of spillage, immediately take off all contaminated clothing. Rinse skin with water. If inhaled: Remove person to fresh air and keep comfortable for breathing. If inhaled, swallowed, or exposed, call a poison center/ doctor.

1.4.7. In a ventilated hood, prepare benzyl alcohol and benzyl benzoate (BA: BB, 1:2) (5 –10 mL per lobe) solution.

1.4.8. Place the liver lobe in a 15- or 50- mL polypropylene tube (depending on the size of the lobe) containing BABB solution. Leave it rocking at room temperature until transparent. This step can take between 2–16 h depending on the size of the lobe.

NOTE: The BABB solution dissolves certain types of plastic. It is safe to store the samples in polypropylene tubes or glass containers.

CAUTION: Benzyl benzoate can cause acute toxicity when swallowed. It is toxic to aquatic life with long-lasting effects. Precautionary statements: wash skin thoroughly after handling. It is harmful when swallowed, in contact with skin, or inhaled. Avoid breathing fume/vapors. Wash hands thoroughly after handling. Do not eat, drink or smoke when using this product. If swallowed - call a poison center/doctor if unwell Use in ventilated areas. Collect spillage. Dispose of contents/container to an approved waste disposal plant.

1.4.9. Inspect the quality of the injection. Only well-injected liver should be scanned with microCT.

2. Micro-computed tomography

2.1. Sample preparation

2.1.1. Prepare 1% agarose gel by mixing 100 mL of distilled water and 1 g of agarose powder. Place the mixture in a microwave and boil the solution until the agarose powder dissolves.

2.1.2. Temper the 1% agarose gel to ~40 °C to avoid thermal damage to the liver sample.

2.1.3. Place the right medial liver lobe in a 15 mL conical tube and fill it with the 1 % agarose gel to approximately 2/3 of the total volume of the tube. This step minimizes undesired sample motion during CT measurement.

2.2. CT measurement

NOTE: The following steps are CT device-dependent, and specific settings and actions may differ for different CT devices and manufacturers. In this protocol, the micro-computed tomography scanner used was equipped with a nanofocus X-ray tube (180 kV/15 W), and flat-panel dynamic 41|100 (4048 px x 4048 px, pixel size 100 μ m with binning 2) for the CT measurements.

2.2.1. Mount the 15 mL conical tube with the sample on the rotational stage of a CT device and allow it to thermally adapt to the measurement chamber for at least 1 h.

2.2.2. When the sample is thermally adapted, center it in the Field of View (FOV).

2.2.3. Optimize the source-sample and sample-detector distances (SSD, SDD) to reach sufficient voxel resolution, e.g., 12 μ m for an adult murine liver sample or 6.5 μ m for <P30 liver, corresponding to dimensions of FOV (for beforehand specified hardware) 24.3 mm x 24.3 mm and 13.2 mm x 13.2 mm respectively.

2.2.4. Set the acquisition parameters (i.e., accelerating voltage and current, exposure, binning, averaging) following the CT device manufacturer's recommendations to reach a sufficient level of the detected signal. These parameters are not only CT device-dependent but also sample-dependent and should be optimized for each sample. In Hankeova et al., the settings were: 80 kV accelerating voltage, 160 μ A accelerating current, 400 ms exposure time, and 2000 images.

2.2.5. Start a CT measurement. Use a dedicated tomographic reconstruction software to reconstruct the CT data.

3. Analysis and data segmentation

NOTE: Following steps are image-processing software-dependent; specific settings and actions may differ depending on the software used.

3.1. Load the CT data: Select **File > Import > Command**. A further selection is dependent on the specific format of the CT data to be processed.

3.2. Use the function **Surface Determination** on the top panel to segment the resin in the data using global thresholding. In the dialog window, determine the threshold value with histogram evaluation by setting the position of the red "Isovalue" line to segment only the resin-filled vessels (i.e., encompassed by the yellow line in the presented "Preview panel") (**Figure 3A**).

3.3. On the left panel, select the module **Create ROI from Volume/CAD/Mesh** to create a region of interest (ROI) of the resin-filled vessels. In the dialog window, use the option **Create ROI(s) from Solid**, select the name of the processed volume and confirm.

3.4. Eliminate erroneous segmentation of noise clusters in the background region of this ROI. Mark this ROI on the right panel, right-click on it and select the module **Split ROI**.

3.5. In the dialog window, set the **Minimum Volume [voxel]** parameter to exclude all the noise particles – this value is experiment and data-dependent and must be optimized for each sample to be analyzed (**Figure 3B**).

3.6. Create smooth, continuous, and solid canal masks without artifacts in the resin-cast ROI – e.g., presence of air bubbles or resin leakage.

3.7. On the left panel, use the module **Smoothing**, set the **Smoothing Strength** parameter to 1 or 2 (depending on the individual data, when higher values might lead to model deformation, especially when dealing with fine structures). If needed, run this process twice (**Figure 3C**).

3.8. Identify and separate the individual tubular systems in the segmented resin mask.

3.8.1. Create a separate ROI for the system filled with the more absorptive resin (the yellow resin used for the common bile duct injection) with higher intensity values in the CT data. Follow the procedure described in step 3.2. (**Figure 3Di**).

3.8.2. Mark the new ROI and the resin mask ROI, right-click and select **Subtract ROI(S)** and subtract the new ROI from the resin mask ROI to create a new ROI for the remaining tubular system (**Figure 3Dii, iii**).

3.9. Export the resulting ROIs for both tubular systems in various formats, based on operator preferences, for subsequent processing in different software. Further, process the resulting ROIs in a volume graphics software to export the final visualization in the form of an image or a video.

REPRESENTATIVE RESULTS:

What to do

Successful double resin injection is achieved when both the intrahepatic bile ducts and portal vein vasculature are well filled. As a quality control step, clearing one lobe (for example, the left lateral lobe) allows for verification of a successful injection, followed by imaging of lobes of interest. The optically cleared lobe can be scanned later using microCT; hence it is possible to optically clear the whole liver. In well-injected mouse liver, the portal vein vasculature should be filled with resin until the liver periphery and resin should be visible in side-branches (**Figure 4**), and this architecture is faithfully recapitulated in microCT scanned and segmented data. Further, well-injected intrahepatic bile ducts should be visible next to the main portal vein branches extending almost to the periphery, and resin should be visible in the major side branches. If the control lobe passes the quality control step, the lobes of interest (included the optically cleared one) can be scanned with microCT. The result of the segmented data from a well-injected liver is shown for a P15 mouse (**Figure 4A,B**) and an adult mouse (**Figure 4C,D**).

What not to do

Intact liver tissue is a prerequisite for successful injection. Take extra care when cutting the abdominal cavity and diaphragm not to accidentally nick the liver tissue. If there is physical damage to the liver during this procedure, the resin is very likely to leak out during portal vein injection (**Figure 5A**). It is not possible to achieve a good injection of the vascular system if the liver is physically damaged.

One of the common mistakes is underfilling the liver with resin that can lead to challenges for visualization or analysis. One of the causes for system underfilling is resin hardening prematurely in the needle or the tip of the tubing before the injection is completed (**Figure 5B**, blue arrowheads, brackets depict large bubbles). A good practice is to use one injection set per animal and work fast after the curing agent is added to the resin. If the resin hardens during the injection (which can be observed by a half-filled system, here exemplified with a half-filled portal vein vasculature) remove the tubing, cut the tip of the tubing (always diagonally to create a beveled tip), and push the plunger. If resin begins to drip again, carefully re-insert the tubing and secure it with the suture. If the resin has hardened in the needle, replace the tubing completely, fill it with resin (avoiding bubbles), carefully re-insert the tubing, and secure it with the suture. It can be challenging to replace the tubing, especially in young postnatal mice <P30, as the tissue is more fragile. Another cause of poor resin filling of portal vein vasculature can be insufficient transcardial perfusion (**Figure 5C**, blue arrowheads denote blood visible in terminal branches). This can be observed when the tips of the vessels are filled with blood instead of resin. To avoid this, ensure that the portal vein (outside the liver) does not contain any blood before the injection. The third cause of underfilled liver is when the tubing is inserted too deep into the liver and enters a branch towards one of the lobes. To prevent this, insert the tubing at a minimum of 0.5 cm from the entry to the liver.

Conversely, one, or both, of the systems become overfilled with resin (**Figure 5D**). It is necessary to visually monitor the liver throughout the injection. Biliary system casting with resin is more challenging than portal vein resin casting since resin-filled ducts are only faintly visible on the liver surface, and it is difficult to assess when the system is nearly full and when to stop. When small yellow resin dots appear on the liver surface (**Figure 2Ci**, blue arrowhead), this is a sign that the biliary system is completely filled, and the resin is starting to leak out of the ducts. Minor resin leakage can be manually corrected during microCT data segmentation (**Figure 5D**, right panels).

If the injection pressure is too high, this can cause vessels or ducts to rupture (**Figure 5E**), irreversibly damaging vessel or duct architecture. The liver will not be suitable for microCT scanning or analysis. To avoid resin overfilling, optimize the right volume and pressure used for injection in each mouse model. When working with mice that have been challenged with a toxic diet, genetic modification, or liver injury that affects the biliary or venous systems, or liver stiffness, the injection pressure and volume may need to be adjusted as volume and pressure tolerated may be different from the wild type mice. This protocol describes the manual injection of the two systems, but it is possible to connect the syringe to a pump to standardize the injection pressure. Bubbles are another very common injection artifact that leads to sparse filling of the tubular networks (**Figure 5F–H**, blue arrowheads). To avoid bubble formation, make sure that the

syringe and tubing do not contain any bubbles, are completely filled with resin, and the resin is dripping from the tip of the tubing before injection. Small bubbles that appear as negative areas on the microCT data can be manually corrected during post-processing steps, although this is laborious.

Fresh is the best

Using fresh yellow resin is a crucial factor, significantly affecting the contrast of the two resins and the microCT data segmentation. When the freshly opened resin is used (**Figure 6A**) there is a clear difference in contrast between the yellow resin-injected bile ducts (bright white) and the green resin-injected portal veins (bright grey). Liver that is injected with fresh resin is easily processed using automated global thresholding. With prolonged storage, the resin precipitates, and the contrast diminishes. After 3 months of storage, the contrast can still be sufficient to distinguish the portal vein from the bile duct (**Figure 6B**), but precipitation affects the mixing of the two resins, which is visible as a heterogeneous opacity in the filled portal vein (Fig 6B, blue arrowheads). Heterogeneous contrast negatively affects the automated thresholding and necessitates manual corrections, which increases the processing time. If the resin is older than six months, the contrast has degraded to a point at which it is not possible to distinguish the yellow-injected bile duct from the green-injected portal vein based on their contrast alone (**Figure 6C**). In this case, the bile duct and portal vein must be segmented manually based on their diameter and position in the hilar region and followed manually throughout the entire microCT data. This procedure is extremely time-consuming and best avoided.

FIGURE AND TABLE LEGENDS:

Figure 1: Injection set for resin casting. (A) Injection set #1 comprises a 30 G needle and PE10 tubing that is ~30 cm long. Injection set #2 is composed of a 23 G needle and PE50 tubing ~30 cm long. (B) The tip of the tubing is stretched and cut at an angle to create a beveled tip. The ruler in A and B is a centimeter ruler, with major increments of 1 cm, intermediate increments of 5 mm, and minor increments of 1 mm.

Figure 2: Double resin casting flow chart. (A) Schematic showing the murine venous circulatory system and the heart with highlighted right atrium, which should be cut away before perfusion, and the left ventricle into which the needle should be inserted for perfusion to wash away the blood from the circulatory system. The inferior vena cava should be severed under the kidneys to relieve vascular pressure. (B) Bile duct resin injection flow chart. (i) Zoom image of (A) depicting where to sever the IVC. (ii) Image depicting the common bile duct (yellow dotted line) from the liver hilar region to the sphincter of Oddi (black arrowheads), with suture thread under the cleared common bile duct. (iii) Suitable position for loose overhand knot around common bile duct. (iv) The yellow dotted line and black arrowheads label the sphincter of Oddi, demonstrating the oblique angle for incision and how the opening should appear after the oblique angle incision. (v) Schematic demonstrating the orientation of the PE10 tubing bevel opening (upwards) upon insertion. (vi) Appearance of yellow resin being injected; resin should easily pass the loosely tied knot. IVC, inferior vena cava; CBD, common bile duct. (C) Portal vein resin injection flow chart. (i) The green dotted line marks the portal vein from the hilar region. The blue arrowheads label overfilled the biliary system. (ii) Suitable location for loose overhand

knot around portal vein. (iii) Schematic demonstrating the bevel opening (upward) upon insertion. (iv) Appearance of liver upon injection of green resin and yellow resin; note the resin-filled blood vessel in the liver periphery. PV, portal vein. **Figure 2A** was created with Biorender.com.

Figure 3: Micro CT data processing in volume graphics software. (A) Surface determination, (i) overestimated isovalue (current preview of selection is shown in yellow color), (ii) underestimated isovalue, (iii) optimal selection of isovalue for proper surface determination of portal vein and bile ducts. (B) Splitting region of interest (ROI) created by surface determination, (i) set the value in dialog window high enough that only one segment (the largest one) will remain, (ii) in yellow frames the smaller (excluded) particles are shown. (C) Surface smoothing of the data, (i) smoothing function is on the left panel, (ii) set the smoothing strength to 1 (max. 2) and create new smoothed ROI, (iii) smoothed data. (D) Separation of individual tubular systems, (i) in surface determination function set the isovalue so that only the biliary system is included in selection (current preview of selection is shown in yellow color), (ii) mark the ROI of both systems and ROI of only the biliary system and subtract biliary system ROI from ROI of both systems, (iii) Portal vein shown in grey, the biliary system shown in green.

Figure 4: Well-injected bile duct (BD) and portal vein (PV) systems. (A) Optically cleared right medial lobe (RML) of postnatal day 15 (P15) liver injected with two resins into the two systems. Scale bar 1 mm. (B) 3D rendering of P15 RML shown in (A) depicting portal vein vasculature in white and biliary system in green. Scale bar 1 mm. (C) Optically cleared RML of adult liver injected with two resins into the two systems. Scale bar 1 mm. (D) 3D rendering of adult RML shown in (C) depicting portal vein vasculature in white and biliary system in green. H = hilar, P = peripheral. Scale bar 1 mm. Panels A, B, D are adapted with permission from Hankeova, S. et al.⁹.

Figure 5: Common challenges of double resin liver injections. (A) The image depicts a liver that was accidentally nicked during the initial opening of the abdominal cavity, and the resin is leaking through the cut (blue arrowhead). (B) Poorly injected portal vein system due to resin hardening. Blue arrowheads label empty terminal branches, and red brackets label large bubbles. Scale bar 1 mm. (C) Poorly injected portal vein system due to poor transcaval perfusion. Blue arrowheads label blood visible in the terminal branches. Scale bar 1 mm. (D) Overfilled biliary system manifested by isolated balls of resin. The left panels show the optically cleared liver, and the right panels show the 3D microCT rendered image. The blue dotted outlines depict zoom-in regions. The black arrowheads label a part of the liver that was damaged during the optical clearing after microCT scanning. Scale bar 1 mm. (E) High pressure during resin injection can cause rupture of the portal vein (the animal in this panel carries a Jag1H268Q mutation), marked by blue arrowheads. Scale bar 1 mm. (F) Bubbles in the resin during portal vein injection (blue arrowheads) and (G) biliary system injection (blue arrowhead), scale bar 1 mm. (H) MicroCT scan of bubbles (blue arrowhead), poorly filled terminal branches (red brackets) and resin leakage (yellow arrowhead), scale bar 1 mm.

Figure 6: Differential resin contrast. (A) Freshly opened yellow resin generates sufficient contrast to distinguish resin injected portal vein (grey) and bile ducts (white). (B) Three months storage of

yellow resin lead to precipitation of the resin resulting in heterogeneous opacity (grey-white portal vein, blue arrowhead). (C) Prolonged storage (>6 months) of yellow resin diminishes the contrast between the portal vein (grey) and bile ducts (grey). Scale bar 100 μ m.

DISCUSSION:

Several critical steps determine DUCT success, from sample preparation to the parameters of the CT device. To achieve the best results, well contrasted, well-injected, and bubble-free resin should be used to allow straightforward digital processing with automated thresholding to obtain 3D data, images, and movies. With training and following this protocol, 90% of injections are successful and result in reproducible data. It is important to use fresh yellow resin to achieve the best contrast between the two injected systems. The yellow resin has a very strong radiopacity, while the blue resin has undetectable radiopacity. Top results are achieved within the first three months after opening a new yellow resin bottle. With time, resin precipitates, and after longer storage (>6 months), the yellow and the green resins will no longer be distinguishable in CT scans. Images with poor contrast necessitate extensive and time-consuming manual tracing and segmentation of the two systems. Next, well-stretched tubing is indispensable to fit into the common bile duct of adult mice and common bile duct and portal vein of postnatal mice. The entry point for the injection must be created with care. If the common bile duct is cut open transversally, it is likely to detach from the surrounding tissue, preventing successful entry of the tubing. This step is especially delicate for postnatal mice in which the common bile duct retracts and “curls up” if it has detached from its surrounding tissue, making insertion of the tubing extremely challenging. The common bile duct entry and injection may require some practice. While preparing the tubing with resin and throughout injection, avoid bubble formation as bubbles will create negative space in the CT images and require time-consuming manual correction. It is important to gently massage the liver by rolling over its surface with a wetted cotton swab during and after the injection procedure as this facilitates even resin spreading. After the completion of injection and removal of the tubing, the silk suture knot must be tightened quickly and carefully, so the resin does not flow out of the liver before it polymerizes completely. For successful microCT imaging, the sample must be properly fixed in place with agarose and thermally adapted to eliminate movement artifacts in the CT data. The acquisition settings are also of key importance, which should be optimized to reach an adequate spatial resolution to resolve fine structures.

Technical modifications to the injection procedure can be made to achieve injection in younger mice. Currently, resin casting of younger mouse livers is limited by the availability of sufficiently thin tubing, with PE10 being the smallest commercially available tubing. Tanimizu et al. successfully injected carbon ink into embryonic day 17 (E17) common bile duct using glass capillaries¹¹. Future testing of whether resin can be delivered via glass capillary would therefore be of interest. DUCT was further adapted to inject other tubular systems such as the airways and pulmonary artery vasculature of the lungs⁹. The double resin injection could also be modified to be used with other commercially available resins, or this protocol could be used for injections with carbon ink.

One of the main limiting factors of the DUCT pipeline is the resin viscosity. DUCT can only be used

for resin casting of tubular structures above a diameter of 5 μm . In this data set, the resin could penetrate tubes with the smallest diameter of 5 μm ⁹. This size limitation precludes the analysis of fine ductules and small capillaries. To further advance the DUCT pipeline to smaller caliber vessels, other commercially available resins should be tested, or the development of new low-viscosity radiopaque agents may improve the lumen penetration.

In Hankeova et al., DUCT was compared to two other commonly used techniques, double carbon ink injections followed by tissue clearing and standard photography, and iDISCO+ with staining of the blood vessels with alpha-smooth muscle cell actin and bile ducts with cytokeratin 7, followed by 3D imaging⁹. DUCT outperformed the other two methods in terms of dual analysis (which was challenging for iDISCO+ due to high liver autofluorescence), 3D imaging, and quantification (not possible with carbon ink injection), and lumenization (DUCT provides data for the internal lumen architecture and system perfusion). As mentioned above, the main limitation of DUCT is the minimum lumen size that can be injected and analyzed (5 μm limit), a parameter in which both carbon ink injection and iDISCO+ performed better. DUCT is superior to single system resin casting^{3,5,6} because it allows analysis of each injected system separately and also facilitates dual 3D investigation to study the architectural relationship between the two systems. DUCT can be applied to study any two tubular networks in 3D. As proof of principle, DUCT was used to visualize the liver biliary and portal vein systems and the pulmonary artery vasculature and airways in lung⁹. The intrahepatic bile ducts develop adjacent to the portal vein, and the portal vein provides a structural template and signaling center that regulates the growth and differentiation of the biliary tree¹². In Hankeova et al., DUCT explored biliary regeneration in a mouse model for the human pediatric disease Alagille syndrome. DUCT revealed previously unreported architectural mechanisms that the biliary system used to achieve a wild-type-like volume⁹. The Alagille syndrome mice utilized two different strategies: (1) in the hilar and central regions of the liver, the biliary system increased its branching, and (2) in the liver periphery, the de novo-generated bile ducts were highly tortuous. These two factors combined to yield a near-normal biliary system volume, despite the abnormal architecture. Furthermore, DUCT detected abnormal bile duct branching that occurred independent of portal vein branching and bile ducts forming connecting bridges between two portal veins⁹. These phenotypes would be impossible to detect in single resin casting and could be misinterpreted in 2D histological sections as bile duct proliferation. DUCT thus provides data describing the 3D architecture of two tubular networks at the whole organ or lobe level with the possibility of qualitative and in-depth quantitative analysis. DUCT could be a new standard for postnatal liver development and liver regeneration analyses in different animal models.

ACKNOWLEDGMENTS:

We thank Kari Huppert and Stacey Huppert for their expertise and help regarding bile duct cannulation and their laboratory hospitality. We also thank Nadja Schultz and Charlotte L. Mattsson for their help with common bile duct cannulation.

We thank the following Granting Agencies for their support:

For work in ERA Lab: Karolinska Institutet (2-560/2015-280), Stockholms Läns Landsting (CIMED (2-538/2014-29)), Ragnar Söderbergs stiftelse (Swedish Foundations' Starting Grant), European Association for the Study of the Liver (Daniel Alagille Award), Swedish Heart-Lung Foundation

(20170723), and Vetenskapsrådet (2019-01350).

For work in JK Lab: We acknowledge CzechNanoLab Research Infrastructure supported by MEYS CR (LM2018110). J.K. thanks to the support of grant FSI-S-20-6353.

DISCLOSURES:

A separate project in the ERA lab is funded by ModeRNA. ModeRNA had no role in the project/protocol described here.

REFERENCES:

1. Narat, J. K., Loef, J. A., Narat, M. On the preparation of multicolored corrosion specimens. *The Anatomical Record*. **64**, 155–160 (1936).
2. Ludwig, J. et al. Anatomy of the human biliary system studied by quantitative computer-aided three-dimensional imaging techniques. *Hepatology*. **27**, 893–899 (1998).
3. Masyuk, T. V., Ritman, E. L., LaRusso, N. F. Quantitative assessment of the rat intrahepatic biliary system by three-dimensional reconstruction. *American Journal of Pathology*. **158**, 2079–2088 (2001).
4. Masyuk, T. V., Ritman, E. L., LaRusso, N. F. Hepatic artery and portal vein remodeling in rat liver: Vascular response to selective cholangiocyte proliferation. *American Journal of Pathology*. **162**, 1175–1182 (2003).
5. Sparks, E. E. et al. Notch signaling regulates formation of the three-dimensional architecture of intrahepatic bile ducts in mice. *Hepatology*. **51**, 1391–1400 (2010).
6. Cuervo, H. et al. Endothelial notch signaling is essential to prevent hepatic vascular malformations in mice. *Hepatology*. **64**, 1302–1316 (2016).
7. Thakurdas, S. M. et al. Jagged1 heterozygosity in mice results in a congenital cholangiopathy which is reversed by concomitant deletion of one copy of Poglut1 (Rumi). *Hepatology*. **63**, 550–565 (2016).
8. Walter, T. J., Sparks, E. E., Huppert, S. S. 3-Dimensional resin casting and imaging of mouse portal vein or intrahepatic bile duct system. *Journal of Visualized Experiments: JoVE*. **68**, e4272 (2012).
9. Hankeova, S. et al. DUCT reveals architectural mechanisms contributing to bile duct recovery in a mouse model for Alagille syndrome. *Elife*. **1**, 1–29 (2021).
10. Andersson, E. R. et al. Mouse model of Alagille syndrome and mechanisms of Jagged1 missense mutations. *Gastroenterology*. **154**, 1080–1095 (2018).
11. Tanimizu, N. et al. Intrahepatic bile ducts are developed through formation of homogeneous continuous luminal network and its dynamic rearrangement in mice. *Hepatology*. **64**, 175–188 (2016).
12. Ober, E. A., Lemaigre, F. P. Development of the liver: Insights into organ and tissue morphogenesis. *Journal of Hepatology*. **68**, 1049–1062 (2018).

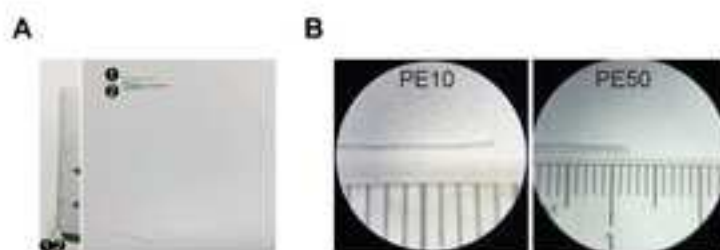


Figure 1
Hankeova et al

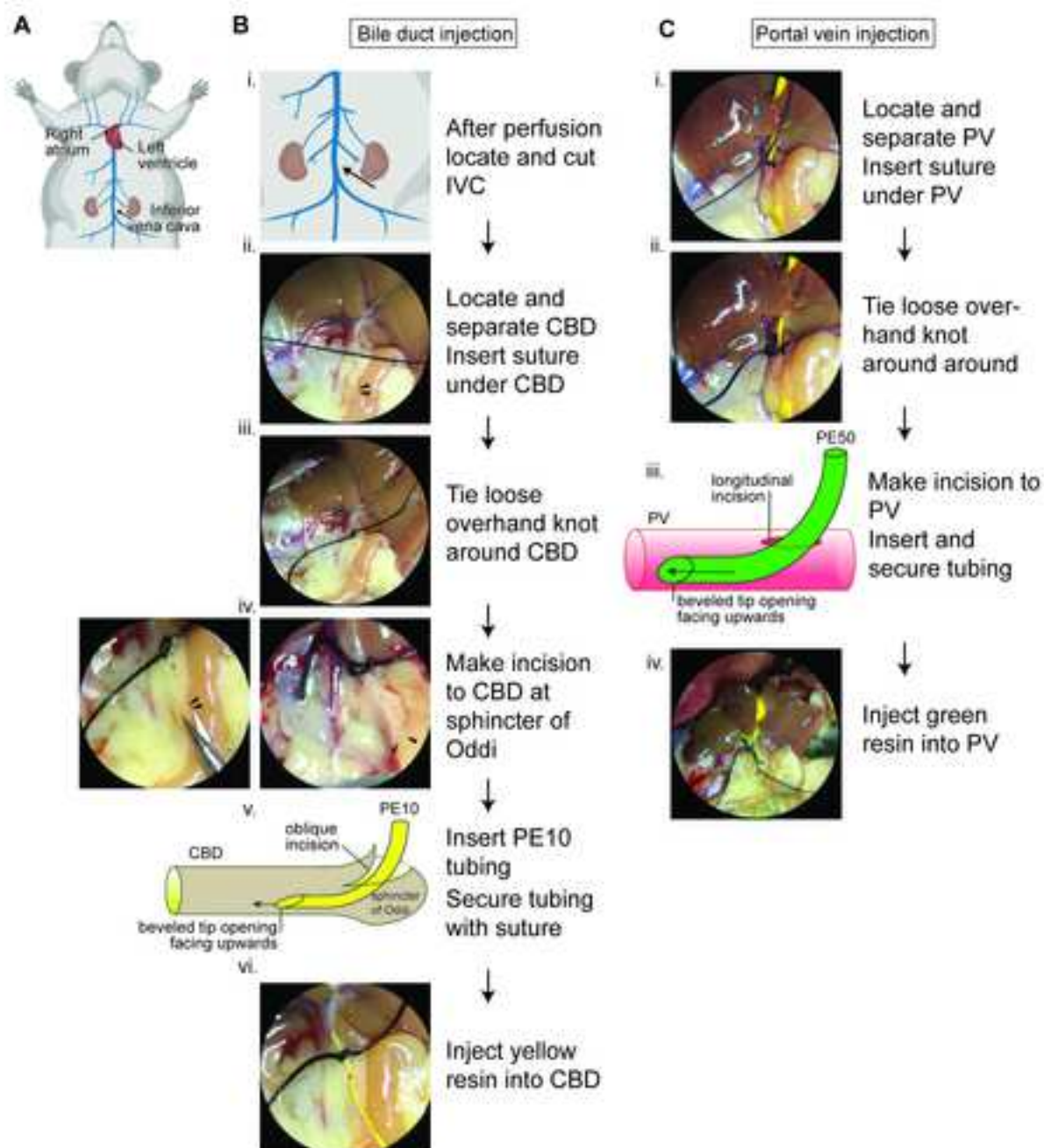


Figure 2
Hankeova et al

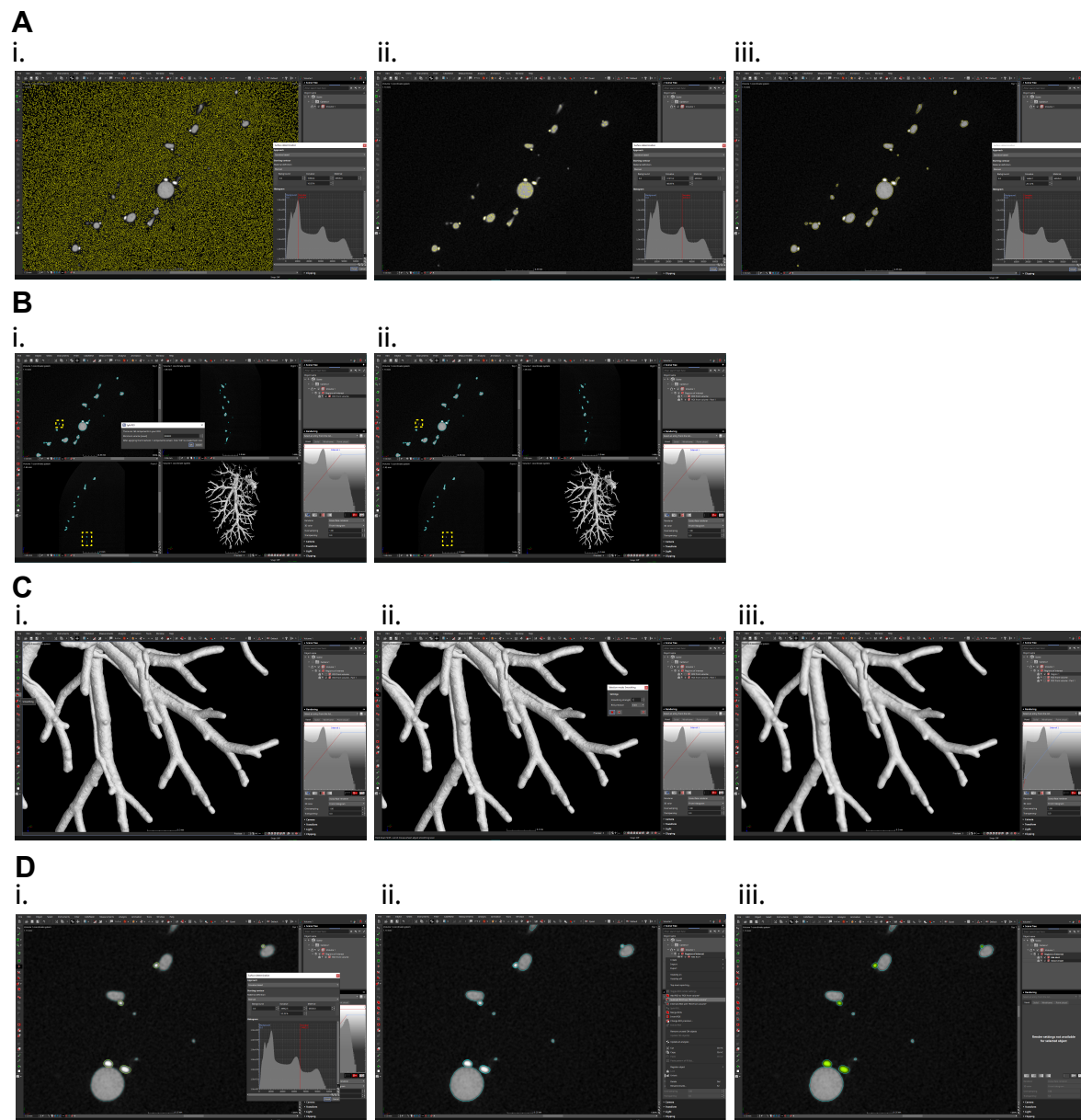


Figure 3
Hankeova et al

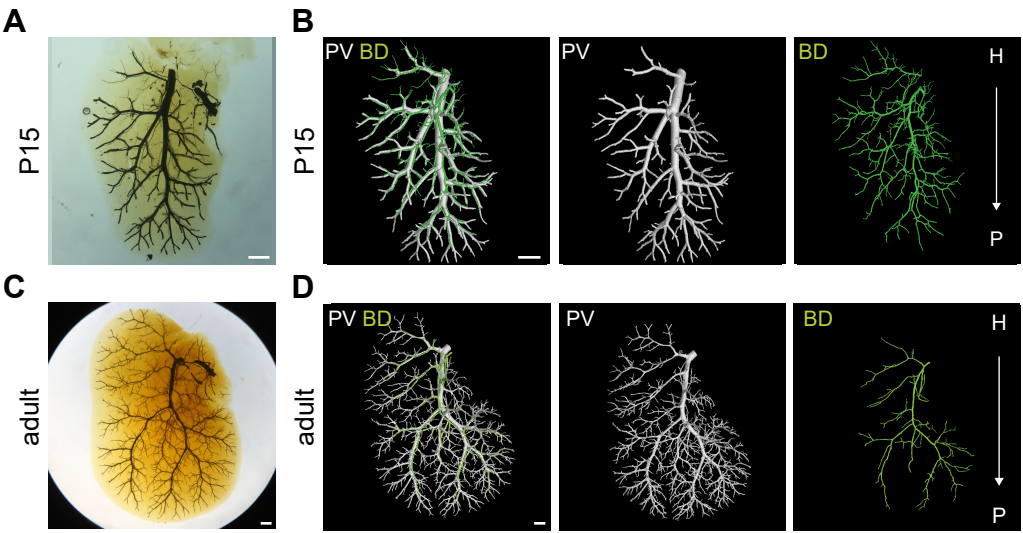
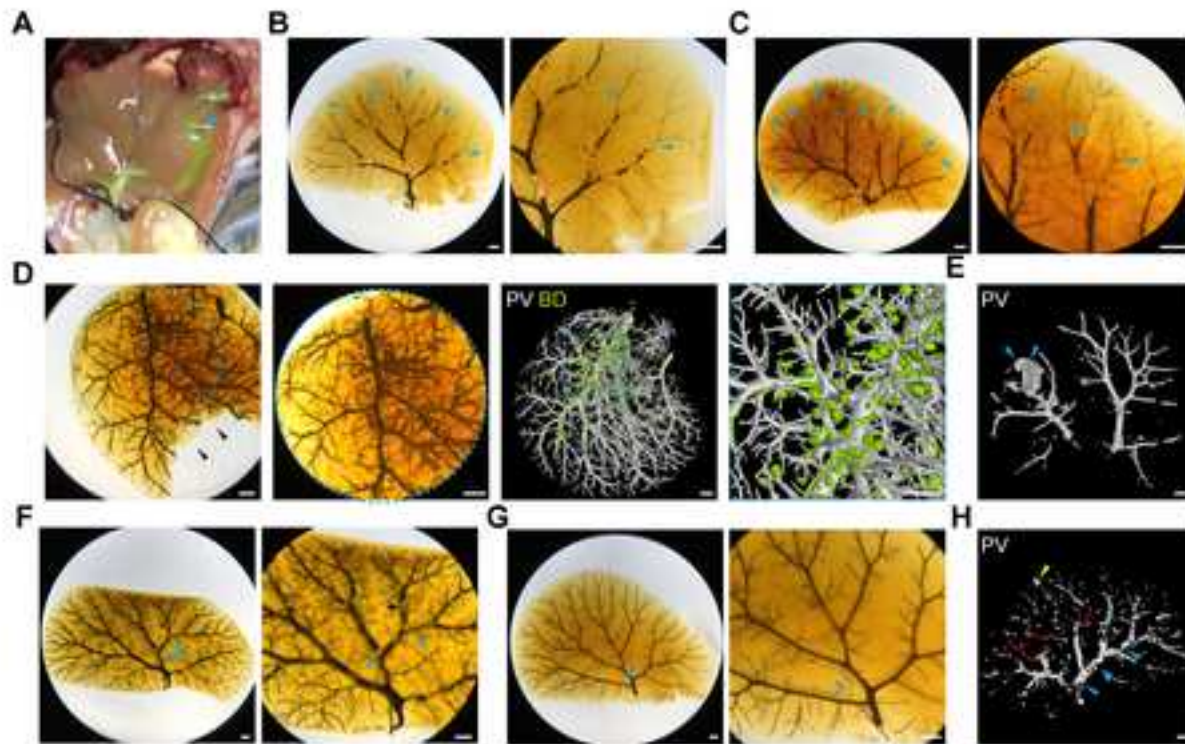


Figure 4
Hankeova et al



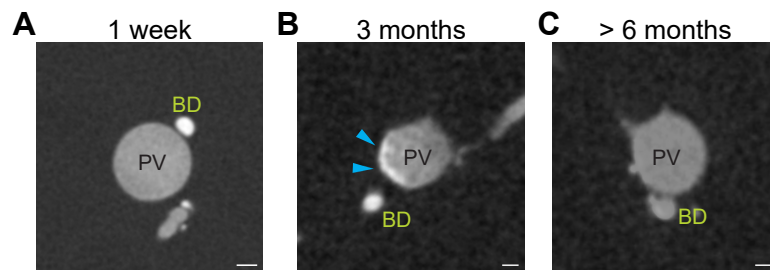

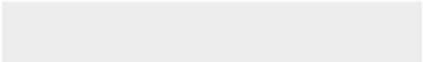



Figure 6
Hankeova et al



Click here to access/download
Table of Materials
Table of Materials-62941R1.xlsx



Editorial comments:

Editorial Changes

Changes to be made by the Author(s):

1. Please take this opportunity to thoroughly proofread the manuscript to ensure that there are no spelling or grammar issues.

The text has been checked for spelling and grammar mistakes.

PLEASE NOTE! Line numbering in this response refers to edits in the Word fully tracked version (edits, insertions and deletions tracked). To facilitate re-review we also provide a PDF with simplified edits (only new text visible, in red).

2. Please revise the following lines to avoid previously published work: 77-79, 147-148, 243-246, 308-310.

The text has been revised:

Lines 80-83: "The DUCT pipeline encompassing resin injection, microCT scanning and CT data segmentation, in combination with detailed quantitative analysis of architectural mechanisms of two tubular systems, could provide a standard for whole liver analysis in animal models."

Lines 179-181: "1.2.1.2 Locate the inferior vena cava (Fig 2A) by moving the intestine to the side. Using spring scissors, make a small transversal incision in the inferior vena cava, allowing release of hepatic vascular pressure (Fig 2Bi)."

Lines 322-327: "In case of spillage immediately take off all clothing that was contaminated. If in contact with skin: rinse the contaminated area with water. If inhaled: remove person to fresh air and monitor breathing if comfortable. Immediately call a Poison center/ doctor. If in eyes: rinse eyes with water for several minutes. If present and possible, remove contact lenses."

Lines 429-434: "3.5 Create smooth, continuous, and solid canal masks without artefacts in the resin-cast ROI – e.g. presence of air bubbles or resin leakage. On the left panel use the module "Smoothing", set the "Smoothing strength" parameter to 1 or 2 (depending on the individual data, when higher values might lead to model deformation especially when dealing with fine structures). If needed, run this process twice (Fig 3C)."

3. Please revise the text to avoid the use of any personal pronouns (e.g., "we", "you", "our" etc.).

The text has been revised and all personal pronouns were removed. However, some portions are now harder to understand, as we have had to re-word portions to "the experimenter" where it previously said "you". (for example "Using forceps, straighten the portal vein by pulling the surrounding tissue towards the experimenter and insert the tubing with the longest edge of the bevelled tip towards the dorsal side of the vessel") We have made the requested changes but suggest it would be better to change back to "you", in some instances.

4. JoVE cannot publish manuscripts containing commercial language. This includes trademark symbols (™), registered symbols (®), and company names before an instrument or reagent. Please remove all commercial language from your manuscript and use generic terms instead. All commercial products should be sufficiently referenced in the Table of Materials. For example: MICROFIL, MV 122, MV Diluent, MV120, falcon, GE Phoenix, GE phoenix datos, VG Studio MAX 3.3, etc.

The text has been revised and all commercial language was removed.

5. Please include an ethics statement before your numbered protocol steps, indicating that the protocol follows the animal care guidelines of your institution.

The ethics statement was added lines 87-89: "The protocol described in this study was approved and follows the animal welfare rules and regulations of the Stockholms Norra Djurförsöksetiska nämnd (Stockholm animal research ethics board)."

6. Please note that your protocol will be used to generate the script for the video and must contain everything that you would like shown in the video. Please add more details to your protocol steps. Please ensure you answer the "how" question, i.e., how is the step performed? Alternatively, add references to published material specifying how to perform the protocol action. Please add more specific details (e.g. button clicks for software actions, numerical values for settings, etc) to your protocol steps. There should be enough detail in each step to supplement the actions seen in the video so that viewers can easily replicate the protocol.

The text has been modified to add additional details and sections 2.2 and 3 of the protocol were adjusted to contain button clicks and software functions.

7. For SI units, please use standard abbreviations when the unit is preceded by a numeral throughout the protocol. Abbreviate liters to L to avoid confusion. Examples: 10 mL, 8 µL, 7 cm²

The text was corrected for standard abbreviations and their spelling.

8. For time units, please use abbreviated forms for durations of less than one day when the unit is preceded by a numeral throughout the protocol. Do not abbreviate day, week, month, and year. Examples: 5 h, 10 min, 100 s, 8 days, 10 weeks

The time units were corrected as suggested throughout the text.

9. Line 97: Please define ">P30".

P30 stage is now defined in the text lines 110-111: "For adult mice (>P30 (postnatal day 30) = P30 – 2 years) injection set #1 (PE10 tubing with 0.6 mm outer diameter) will be used for cop30mmom bile duct injection and injection set #2 (PE50 tubing with 0.96 mm outer diameter) will be used for portal vein injection."

10. Line 124-125: Is ethanol sprayed to prevent interference from fur or to sterilize the surgical site?

The ethanol is sprayed to prevent interference from fur (as stated in the text). DUCT technique is a terminal experiment, and the resin injection is performed postmortem.

11. Line 150-155: Please ensure that the Protocol section consists of numbered steps. We cannot have non-numbered paragraphs/steps/headings/subheadings.

The steps were numbered lines 183-191:

"1.2.1.3.1 Move the intestine and pancreas to the right side (Of the experimenter) using a phosphate buffered saline (PBS)-wetted cotton swab.

1.2.1.3.2 Flip the ventral side of liver towards the heart using the PBS-wetted cotton swab to expose the visceral surface and the hilar region.

1.2.1.3.3 Locate the common bile duct that runs from the hilar region across the pancreas and into the intestine at the sphincter of Oddi (Fig 2Bii., common bile duct outlined with yellow dotted line, black arrowheads point to Sphincter of Oddi)."

12. Line 159/198: Please specify the specification of the suture.

The suture size has been specified lines 196, 246 "Place silk suture thread (size 4-0, 0.17 mm), (3 – 5 cm long) under the common bile duct (Fig 2Bii.) and tie a loose overhand knot around the common bile duct (Fig 2Biii.)."

13. Line 314-324: Step 3.6 is missing. Please ensure that 3.6.1–3.6.4 follows after step 3.6.

The text was updated and the protocol follows numerical sequence.

14. Please include a one-line space between each protocol step and then highlight up to 3 pages of the Protocol (including headings and spacing) that identifies the essential steps of the protocol for the video, i.e., the steps that should be visualized to tell the most cohesive story of the Protocol. Remember that non-highlighted Protocol steps will remain in the manuscript, and therefore will still be available to the reader.

The one-line space was added to the "Protocol" section of the manuscript and three pages were highlighted in yellow.

15. Please obtain explicit copyright permission to reuse any figures from a previous publication. Explicit permission can be expressed in the form of a letter from the editor or a link to the editorial policy that allows re-prints. Please upload this information as a .doc or .docx file to your Editorial Manager account. The Figure must be cited appropriately in the Figure Legend, i.e. "This figure has been modified from [citation]."

Permission to reuse figures or data is granted via the CC BY 4.0 License (and © 2021, Hankeova et al.) for Hankeova et al. eLife 2021 (see also <https://elifesciences.org/terms>). Line 580: "Panels A, B, D are adapted from previously published work⁹, with permission."

16. In-text references must be numbered in the order of citation, and when repeated, they must be given in the numbered order used in the list of references. The corresponding reference numbers should appear as numbered superscripts after the appropriate statement(s).

The text references were updated to numbers.

17. Figure 2: Please revise the labels in 2B and 2C to "i, ii, iii, etc." instead of " 1, 2, 3, etc."

The figure labels were changed from Arabic to Roman numerals.

18. Figure 3/4/5: Please include scale bars in all the images of the panel. Provide the details of magnification in the figure legends.

Scale bars have been added and their magnification is stated in corresponding figure legend.

19. Please maintain single spacing between the number and the unit in the Table of Materials.

The Table of Materials was updated to maintain single spacing between number and unit.

Reviewers' comments:

Reviewer #1:

Manuscript Summary:

This manuscript entitled "DUCT: DoUble resin casting followed by micro-Computed Tomography" presents an improvement of an existing resin casting procedure to visualize and quantify separate tubular networks in 3D within the same organ, the liver. This protocol cleverly utilizes dilution with a radio-transparent resin to create a difference in X-ray attenuation, which greatly simplifies segmentation of complex tubular networks. The steps are systematic, concise, and easy to follow. If this method is easily adaptable to other organ systems, as shown in lung, I believe it could be employed by investigators who are interested in organ systems with complex vasculature and tubular networks, such as the liver, lung, kidney, and pancreas.

Thank you for the nice summary and vote of confidence that the method could extend beyond the liver field.

Major Concerns:

The need for pre-screening to identify well-injected samples suggests that the common challenges presented in Figure 4 occur often, which is a cause for concern. What is the rate to successfully produce well-injected, well-contrasted, bubble-free specimens using this procedure?

We expect that beginners will need to practice injections and screen their results. For a trained person the success rate is 90%. It is important to practice the resin injection and careful tubing filling to achieve the same success rate. Small bubbles are the most common artefact even when experienced person performs the injection, but they are easily fixed during the microCT data segmentation step. The text has been adjusted in lines 611-612: "With training and following this protocol, 90% of injections are successful and result in reproducible data."

Minor Concerns:

1. Line 79: "whole liver analysis" should be nuanced. The protocol requires some of the tissue to be used for quality control and only the remaining tissues are processed for microCT. As such, the microCT analysis is not "whole liver".

Thank you for pointing out our need to clarify this point. We have updated the text to emphasize that the lobes that are used for optical clearing can be later scanned with microCT. Another alternative is to clear the entire liver without separating the lobes, and subsequently scan the entire liver. Lines 296-309: "1.3.3 Separate the liver into individual lobes. Make a selection of the lobes that will be used for microCT analysis (1.3.4) or for quality control (1.3.5 and 1.3.6). Optionally use the whole liver for both optical clearing and microCT without separating it into individual lobes.

NOTE: Liver architecture of the biliary and vascular systems is different in each lobe, and matched lobe analyses are therefore required. The optical clearing does not interfere with microCT scanning and the lobe(s) used for quality control can be subsequently scanned with microCT. Conversely, samples scanned with microCT can be subsequently optically cleared for comparison. Whole liver analysis is thus possible. In wild type mice (C3H/C57bl6 genetic background), the right medial lobe is filled first by resin injections, making this a suitable lobe for microCT analysis, with highest reproducibility. The left lateral lobe is the biggest lobe, in which it is therefore straightforward to pre-screen for injection quality. The selection of the lobe (or whole liver) used for quality control and microCT scanning is dependent on the animal model and research question."

2. Line 187, Line 214: "fast" should be clarified by an estimation of the time it takes for the resin to harden after addition of curing agent.

Thank you for raising this question, we have measured the resin hardening time and updated the text lines 231-232: "Work as fast as possible since the resin begins to harden after the addition of resin curing agent. The working time from adding the curing agent is approximately 15 min." Further in lines 271-273: NOTE: Work fast since the resin begins to harden after the addition of curing agent. The working time from adding the curing agent is approximately 15 min for injection set#1 and 25 min for injection set #2.

3. Line 225-226: wall of the 50 mL Falcon tube is curved. Would the curvature not cause deformation to the tissue? Why not use a flat, wide-bottomed container so that the liver can lie flat?

Thank you for your suggestion. By default, we use 50 ml tubes as they are easily available in our animal facility, which has a strict policy regarding material that can be brought in. However, we agree that a wide enough flat bottom container would completely prevent tissue deformation. The text was updated in lines 293-294: "NOTE: Any container that is big enough to fit the liver can be used instead of 50 mL conical tube. Using a flat bottom container will increase the likelihood that the liver is not deformed. "

4. Line 228-229: what are the guidelines for designating each lobe to quality control vs microCT analysis?

Thank you for this question. In our mice (50/50 C3H/C57bl6 genetic background), we observed that the lobes fill up in certain order rather than synchronously. The right medial lobe fills up

first, which made it most suitable and reproducible for analysis. In principle, any lobe or the whole liver can be used for quality control and microCT scanning. We have updated the text, lines 304-309: "In wild type mice (C3H/C57bl6 genetic background), the right medial lobe is filled first by resin injections, making this a suitable lobe for microCT analysis, with highest reproducibility. The left lateral lobe is the biggest lobe, in which it is therefore straightforward to pre-screen for injection quality. The selection of the lobe (or whole liver) used for quality control and microCT scanning is dependent on the animal model and research question."

5. Line 235: what is the rigidity of the resin post-polymerization? If resin is hard enough to sustain its structure without support of surrounding tissue, it seems that maintaining tissue integrity is not crucial, given that microCT generates image from the radiopaque resin, not the tissue itself.

The polymerized MICROFIL resin is soft and rubbery and does not hold itself (tested with tissue maceration). That is why we recommend fixation of the tissue to prevent any tissue changes especially if the samples are not used immediately for scanning.

6. Line 287-289: what are the dimensions of the FOV associated with each voxel resolution?

The FOV dimension were added to the text, lines 383-386: "2.2.3 Optimize the source-sample and sample-detector distances (SSD, SDD) to reach sufficient voxel resolution e.g. 12 μm for an adult murine liver sample or 6.5 μm for <P30 liver, corresponding to dimensions of FOV (for beforehand specified hardware) 24.3 mm \times 24.3 mm and 13.2 mm \times 13.2 mm respectively."

7. Line 330: how does clearing affect morphology. Is it possible to scan with microCT after clearing?

Thank you for this question. We tested the microCT scanning after tissue clearing and clearing does not interfere with the tissue morphology. We have updated the text to highlight this point in lines 300-301: "The optical clearing does not interfere with microCT scanning and the lobe(s) used for quality control can be subsequently scanned with microCT."

8. Line 441: "liver that was damaged during the optical clearing after the microCT scanning" should be clarified. In the protocol, optical clearing and microCT scanning were performed on separate pieces of tissue.

Thank you for pointing out that this portion was not clear. This particular sample was thawed from agarose after microCT scanning and cleared to compare the two techniques. The text was updated in line 302: "Conversely, samples scanned with microCT can be subsequently optically cleared for comparison."

9. Line 488: it would be nice to also see 3D image of the tubular networks in the lung

Thank you for your interest in the lung resin casting. The protocol described in this manuscript is specific for liver injections; to achieve lung injections one needs to inflate the lungs, and cannulate and inject different vessels. Combining the images of liver and lungs hence might be confusing for the reader, as the protocol requires several modifications, and the protocol described here will not fill the lungs. We hope that the reviewer and readers will be satisfied by

the reference to our former publication (Hankeova et al 2021 eLife) in which we show resin-injected lungs.

Reviewer #2:

Manuscript Summary:

The manuscript by Hankeova et al describes the process of double resin casting of the bile duct and vasculature in the liver. I found this manuscript to be generally clear and would like to thank the authors for putting together this protocol. I have contacted the editorial office and submitted an annotated copy of the manuscript with some points on, given the nature of this review I thought this would be more helpful than listing elements below as my concerns are trivial and largely due to clarity. One thing the authors could clarify in the introduction is how this can be applied to other organ systems.

Thank you for your positive comments and for your separate detailed notes. We have adjusted the manuscript text accordingly.

The introduction was modified to clarify how DUCT can be used for other organs. Lines 71-74: "DUCT can be applied for any tubular structure after determining the injection entry point, such as the arterial and venous circulatory systems, airways, the extrahepatic bile duct or lymphatic vessels, and could thus facilitate whole organ architecture analysis of other tissues such as lungs and pancreas."

Major Concerns:

I have no major concerns.

Thank you, this was a pleasure to read.

Minor Concerns:

There are a few annotations on the attached which should be looked at for clarity. The two substantial ones are summarised below:

It would seem sensible to me to have a short paragraph just before 1.1.2 describing the two age stages a bit more and why you would need set 1 and set 2 of injectables - I'm not sure why you need this from the text and it left me confused further down in the text. This could be clarified.

Thank you for your comment. The need for the two different tubing is due to the size of adult portal vein circulation. The adult portal vein is wide enough to fit PE50 tubing. The major advantage of using wider tubing is that the inner diameter of a 25G needle and PE50 tubing is bigger (compared to a 30G needle and PE10 tubing) and results in slower resin polymerization and extends the functional injection time. The text was modified in lines 110-115: "1.1.2 Prepare two injection sets with tubing. For adult mice (>P30 (postnatal day 30) = P30 – 2 years) injection set #1 (PE10 tubing with 0.6 mm outer diameter) will be used for common bile duct injection and injection set #2 (PE50 tubing with 0.96 mm outer diameter) will be used for portal vein injection. For young postnatal mice (up to P30) prepare two #1 injection sets, one for bile duct

and one for portal vein injection (no injection set #2 as portal vein is too narrow to accommodate PE50 tubing)."

Secondly, it would be good to have some screen grabs and stills from the microCT segmentation and measurements - simply to allow users to better understand the text. This may come across in the accompanying video.

Thank you for your suggestion. We have added a new figure – Figure 3 that contains screenshots from the microCT segmentation pipeline. We have further updated the text in Protocol part 3 to add action commands and button clicks. This part will be included in the final video.

Permission to reuse figures or data is granted via the CC BY 4.0 License (and © 2021, Hankeova et al.) for Hankeova et al. eLife 2021 (see also <https://elifesciences.org/terms>).