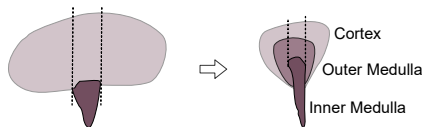


## 1. Tissue dissection (~30 min)



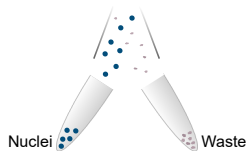
Middle slice dissection and cortex trimming  
(see dashed lines above)

## 2. Nuclei isolation (~1 h)



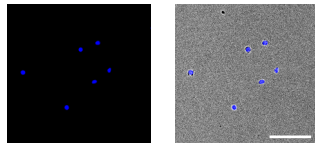
Tissue mincing, homogenization and  
sucrose gradient centrifugation

## 3. Nuclei sorting (~30 min)



Cell debris and aggregate reduction

## 4. Quality control (~10 min)



Nuclei quality and concentration  
assessment