

Journal of Visualized Experiments

Isolation and In vitro culture of bone marrow derived macrophages for the study of NO-redox biology --Manuscript Draft--

Article Type:	Invited Methods Collection - JoVE Produced Video
Manuscript Number:	JoVE62834R2
Full Title:	Isolation and In vitro culture of bone marrow derived macrophages for the study of NO-redox biology
Corresponding Author:	Mark J. Crabtree UNITED KINGDOM
Corresponding Author's Institution:	
Corresponding Author E-Mail:	mark.crabtree@well.ox.ac.uk
Order of Authors:	Marina Diotallevi Thomas L. Nicol Faseeha Ayaz Jade Bailey Andrew Shaw Eileen McNeill Ben Davies Keith M. Channon Mark J. Crabtree
Additional Information:	
Question	Response
Please specify the section of the submitted manuscript.	Immunology and Infection
Please indicate whether this article will be Standard Access or Open Access.	Open Access (\$3900)
Please indicate the city, state/province, and country where this article will be filmed . Please do not use abbreviations.	Oxford, Oxfordshire, United Kingdom
Please confirm that you have read and agree to the terms and conditions of the author license agreement that applies below:	I agree to the UK Author License Agreement (for UK authors only)
Please provide any comments to the journal here.	2 first authors have equal contribution
Please confirm that you have read and agree to the terms and conditions of the video release that applies below:	I agree to the Video Release

TITLE:

Isolation and *In vitro* Culture of Bone Marrow-Derived Macrophages for the Study of NO-Redox Biology

AUTHORS AND AFFILIATIONS:

Marina Diotalle^{1,2}, Thomas Nicol^{1,2}, Faseeha Ayaz^{1,2}, Jade Bailey^{1,2}, Andrew Shaw^{1,2}, Eileen McNeill^{1,2}, Ben Davies^{1,2}, Keith M. Channon^{1,2}, Mark J. Crabtree^{1,2}

¹BHF Centre of Research Excellence, Division of Cardiovascular Medicine, Radcliffe Department of Medicine, John Radcliffe Hospital, University of Oxford, Oxford, OX3 9DU, UK

²Wellcome Centre for Human Genetics, University of Oxford, Oxford, OX3 7BN, UK

* Indicate equal contributions

Email addresses of co-authors:

Marina Diotalle	(marinad@well.ox.ac.uk)
Thomas Nicol	(tnicol@well.ox.ac.uk)
Faseeha Ayaz	(faseeha.ayaz@ccc.ox.ac.uk)
Jade Bailey	(jade.bailey@outlook.com)
Andrew Shaw	(AShaw12@uclan.ac.uk)
Eileen McNeill	(eileen.mcneill@sgc.ox.ac.uk)
Ben Davies	(ben@well.ox.ac.uk)
Keith M. Channon	(keith.channon@cardiov.ox.ac.uk)
Mark J. Crabtree	(mark.crabtree@well.ox.ac.uk)

Corresponding author:

Mark J. Crabtree (mark.crabtree@well.ox.ac.uk)

SUMMARY:

This protocol has been established to culture tetrahydrobiopterin (BH4)- and inducible nitric oxide synthase (iNOS)-deficient primary murine macrophages to study NO-redox biology. The study focuses on reducing potential contamination of BH4 and other artifacts found in traditional isolation and culture methods which may confound experimental outcomes and interpretation of results.

ABSTRACT:

Macrophages are derived from hematopoietic progenitor cells throughout the body, are central to inflammatory processes, and participate in innate and adaptive immune responses. *In vitro* study of macrophages can be undertaken by *ex vivo* culture from the peritoneum or through differentiation of myeloid bone marrow progenitor cells to form bone marrow-derived macrophages (BMDMs). A common approach to macrophage differentiation from precursors involves the use of conditioned media from L929 cells (LCM). This media is easy to self-produce but suffers from batch variability, and its constituents are undefined. Similarly, Foetal Bovine Serum (FBS) is used to support growth but contains a vast mixture of undefined

molecules that may vary between batches. These methods are not adequate for the study of nitric oxide biology and redox mechanisms as they both contain substantial amounts of small molecules that either interfere with redox mechanisms or supplement levels of cofactors, such as tetrahydrobiopterin (BH4), required for the production of NO from inducible nitric oxide synthase (iNOS). In this report, we present an optimized protocol allowing for control of the NO-redox environment by reducing the levels of exogenous biopterin while maintaining conditions suitable for cell growth and differentiation. Tight control of culture media composition helps ensure experimental reproducibility and facilitates accurate interpretation of results. In this protocol, BMDMs were obtained from a GTP cyclohydrolase (GCH)- deficient mouse model. Culture of BMDMs was performed with media containing either (i) conditioned LCM, or (ii) recombinant M-CSF and GM-CSF to produce minimal artifacts while obtaining BH4 and NO-deficient culture conditions - thus allowing for the reproducible study of NO-redox biology and immunometabolism *in vitro*.

INTRODUCTION:

Macrophages have been established as an interesting cell type in a wide variety of diseases and conditions, many seemingly unrelated to their traditional focus on innate immunity. As macrophage physiology is heavily dependent on the tissue or environment they are resident in, many methods and models have arisen to study their function and the various pathways involved. Historically, macrophage cell lines, such as RAW264.7, dominated the field, but these have been gradually replaced in favor of various primary cell models. For example, murine macrophages may be isolated from peritoneal lavage following treatment with thioglycolate. While providing a useful model for the study of tissue-resident cells, these peritoneal macrophages have been shown to demonstrate a more subdued response to various external stimuli, thereby limiting their suitability for many downstream applications¹.

As an alternative, bone marrow-derived macrophages (BMDMs), derived from myeloid progenitor cells in the bone marrow, have emerged as a valuable model for studying various aspects of macrophage biology, including maturation and the various classical phenotypes associated with macrophages, M0 (naive, non-activated), M1 (pro-inflammatory, usually activated with LPS/IFN) and M2 (pro-resolution, usually activated with IL-4)^{2,3}. However, the differentiation of myeloid progenitor cells into BMDMs is dependent on the presence of macrophage colony-stimulating factor (M-CSF) in the culture media^{4,5}. This may be supplied either in the form of purified protein added to the media or from L929 conditioned media (LCM). The advantages of using BMDMs (cost and efficiency) must be weighed against the limitations presented by their sensitivity to various stimuli (cytokines, metabolic intermediates, and RNS/ROS).

Previous data indicate that the contents of LCM are poorly defined and intrinsically variable, resulting in their being unreliable and unsuitable for a variety of downstream applications, especially those specifically relating to NO or redox biology, as these may be heavily influenced by the presence of exogenous compounds⁶. As such, this detailed protocol calls for the use of well-defined DMEM: F12 media with low batch to batch variation and the addition of recombinant murine M-CSF and GM-CSF (Granulocyte-macrophage colony-

stimulating factor). Furthermore, fetal bovine serum typically used as a supplement in tissue culture media provides yet another source of poorly defined compounds and inherent variability. It is, therefore, necessary to control for and optimize the use of such additives to ensure the reliable culture of BMDMs. By using a defined low-endotoxin source of FBS and ensuring single batches are bulk purchased, culture conditions are reliably defined, and reproducibility is ensured. The protocol described herein has been demonstrated to produce a macrophage culture above 95% purity when assessed for the macrophage surface markers CD45 and CD11b by flow cytometry⁶.

PROTOCOL:

All animal procedures were approved and carried out in accordance with the University of Oxford ethical committee and the UK Home Office Animals (Scientific Procedures) Act 1986. All procedures conformed to the Directive 2010/63/EU of the European Parliament.

1. Isolation of bone marrow cells

1.1. Sacrifice wild-type (C57BL/6), or Gch1-deficient (R26-CreER^{T2}Gch^{fl/fl}) mice (10–16 weeks old) by cervical dislocation and collect the hind limbs.

NOTE: No preference for either sex is made. Age-matched females will be slightly smaller than their male counterparts, affecting the initial yield of starting material.

1.1.1. Spray the mice with 70% ethanol to reduce the risk of contamination.

1.1.2. Make a small cut in the abdomen with dissection scissors to remove fur and skin from the body. Peel the skin off to expose the muscle on the hind limbs.

1.1.3. Place the mouse on its abdomen and dislocate the hind limbs by lifting it from the knee joint and placing pressure on the hips. The dislocation can be felt at the hip joint.

1.1.4. Remove the hind legs by carefully cutting through the muscle at the hip, ensuring no damage occurs to the femur.

1.1.5. Cut above the ankle joint, remove the foot and clean any remaining skin from the leg.

1.1.6. Place the dissected legs in a 50 mL tube with 25 mL of ice-cold PBS (no antibiotic required) and place it on ice.

NOTE: Multiple animals can be dissected, and the legs kept on ice.

1.2. Under sterile conditions in a tissue culture hood, remove the muscles from the legs and remove the ends of the bones to expose the bone marrow.

1.2.1. Place the legs in 70% ethanol for 2 min to reduce contamination and wash off any fur or residue.

1.2.2. Transfer the legs to a clean, sterile, bacteriological Petri dish. Use forceps and a scalpel to firmly and carefully scrape along the bones with the side of the blade to remove the muscles. Cut through tendons to ease the process.

1.2.3. Remove the epiphysis at the extremity of each bone to expose the bone marrow. The femur is cut at either end, just short of the respective joints.

1.2.4. The tibia is cut at the top, just short of the knee joint, and at the bottom just above the point of intersection with the fibula.

1.3. Flush the bone marrow from the bones with PBS and collect it in a 50 mL sterile tube.

1.3.1. Fill a 10 mL syringe with 10 mL of PBS and attach to a 25 G x 0.5 x 16 mm needle. This is sufficient to flush all of the bones from one mouse.

1.3.2. Insert the needle into the medullary cavity of the bone and gently flush the bone marrow out with 1–2 mL of PBS, running the needle up and down through the bone to ensure all bone marrow is dislodged.

1.3.3. Repeat for all bones, collecting the flushed bone marrow in a clean Petri dish.

1.3.4. Using a sterile 1 mL syringe, disaggregate the bone marrow by drawing the suspension in and out of the syringe 5–10 times until any lumps are broken up.

1.3.5. Collect the disaggregated bone marrow in the 1 mL syringe and pass it through a 70 μ M cell strainer into a clean 50 mL centrifuge tube. Place the collected bone marrow on ice while further samples are collected.

NOTE: See protocol scheme in **Figure 1** - Part 1.

2. Selection, differentiation, and stimulation of BMDMs

2.1. To freeze bone marrow for later use, pellet the bone marrow by centrifugation at 1000 x g for 5 min and resuspend in 2 mL of low endotoxin FBS containing 5% Dimethyl Sulfoxide (DMSO).

2.1.1. Centrifuge the bone marrow suspension at 1000 x g for 5 min at room temperature (RT). A blood-red pellet will form.

2.1.2. Discard the supernatant.

2.1.3. Gently resuspend the pellet in 2 mL of low-endotoxin FBS containing 5% DMSO and freeze at -80 °C overnight before transferring to vapor-phase liquid nitrogen for long-term storage.

2.2. To use bone marrow immediately, lyse the red blood cells before plating the bone marrow.

2.2.1. Centrifuge the bone marrow suspension at 1000 x *g* for 5 min at RT. A blood-red pellet will form.

2.2.2. Resuspend the pellet in 3 mL of 1x red blood cell lysis buffer and incubate at RT for 5 min.

2.2.3. Add 10 mL of PBS and centrifuge at 1000 x *g* for 5 min at RT. Discard the supernatant.

2.2.4. Plate the cells for immediate use by continuing from step 2.3.5.

2.3. Defrost the macrophages and resuspend in 3 mL of plating media before pelleting the cells.

2.3.1. Prepare DMEM: F12 containing 5% low endotoxin FBS, 1x penicillin/streptomycin, L-glutamine and 25 ng/mL M-CSF.

NOTE: M-CSF and GM-CSF can be prepared by resuspending dried protein in sterile water containing 0.1% sterile BSA, and the aliquots can be frozen at -80 °C for later use.

2.3.2. Defrost the frozen cell suspension rapidly at 37 °C.

2.3.3. Transfer the cell suspension (0.5 mL) to a clean, sterile tube containing 3 mL of the prepared DMEM: F12 media.

2.3.4. Pellet the cells by centrifugation at 1000 x *g* for 5 min at RT. Discard the supernatant.

2.3.5. Resuspend the pellet in 3 mL of the prepared DMEM: F12 media.

2.3.6. Count the cells by a preferred method.

2.4. Day 0: Plate the cells

2.4.1. Plate the cells in non-TC-coated plastic ware in DMEM: F12 media containing 5% low endotoxin FBS, 1x penicillin/streptomycin, L-glutamine, and 25 ng/mL M-CSF.

NOTE: Representative seeding densities are described in **Table 1**. A complete pair of legs from one mouse provides 15–20 million precursor cells.

222 2.4.2. Incubate the cells at 37 °C with 5% CO₂.

224 2.5. Day 5: Feed the cells

226 2.5.1. Feed the cells by adding 50% of the original volume of DMEM: F12 media containing
227 5% low endotoxin FBS, 1x penicillin/streptomycin, L-glutamine, and 50 ng/mL M-CSF.

229 2.6. Day 6: Stimulate the cells with GM-CSF

231 2.6.1. Add prepared GM-CSF to a final concentration of 50 ng/mL directly to the cell culture
232 media on the cells.

234 2.7. Replace the media with prepared DMEM: F12

236 2.7.1. Remove all media from the cells

238 2.7.2. Wash the cells briefly in pre-warmed PBS

240 2.7.3. Add DMEM: F12 media containing 2% low endotoxin FBS, 1x penicillin/streptomycin,
241 L-glutamine, 25 ng/mL M-CSF and 50 ng/mL GM-CSF.

243 2.7.4. Activate the macrophages to the M0, M1, or M2 phenotypes with the stimulations
244 described in steps 2.7.5–2.7.7.

246 2.7.5. M0 - No stimulation required. Incubate the cells overnight in media.

248 2.7.6. M1 - Stimulate the cells with 100 ng/mL LPS and 10 ng/mL IFN γ (final concentrations)
249 overnight.

251 2.7.7. M2 - Stimulate cells with 100 ng/mL IL-4 (final concentration) overnight.

253 2.8. Day 8: Harvest the cells

255 2.8.1. Remove media from the cells (collect media and freeze at -80 °C for downstream
256 assays)

258 2.8.2. Incubate the cells in ice-cold PBS (50% of media volume) for 5 min.

260 2.8.3. Detach the cells from the plate with gentle scraping or repeated pipetting.

262 2.8.4. Pellet the cells by centrifugation at 2500 x *g* for 5 min at RT. Discard the supernatant.

264 2.8.5. Freeze the cell pellets at -80 °C for later use.

NOTE: See protocol scheme **Figure 1** - Part 2.

REPRESENTATIVE RESULTS:

Before demonstrating the efficiency of this protocol in macrophages, nitrite, and BH4 levels were assessed in media supplemented with 10% of FBS containing either 10% of LCM or only recombinant M-CSF and GM-CSF. Nitrite, although considered for a long time as an end product of nitric oxide metabolism, is now regarded as physiological storage of nitric oxide, which can be recycled when required and thus is often used as an indicator of nitric oxide bioavailability⁷. BH4 is an essential cofactor of NOS for NO production. As seen in **Figure 2**, media supplemented with 10% FBS had similar nitrite levels regardless of M-CSF/GM-CSF or LCM. However, more variability between different LCM batches was observed. This observation also applied to the BH4 measurement. In fact, one batch of LCM (batch #3) had a significantly higher level of BH4 than the other two (batches #1 and #2). Furthermore, LCM batches contained significantly more biopterin than media supplemented with 10% FBS and recombinant cytokines. Significant variability of total biopterins between batches was also measured. These results demonstrate the importance of using a less variable source of M-CSF than LCM.

Moreover, media supplemented with 10% FBS contained significantly higher levels of nitrite compared with media containing either 2% or 5% of FBS. The difference between 10% and 5% was highly significant ($p < 0.05$) for BH4. However, similar levels of biopterins were quantified. In comparison, OptiMEM + 0.2% BSA was devoid of nitrite and BH4, making it a very clean and suitable media. However, as described by Bailey et al., although OptiMEM is meant to be used only once overnight when stimulating macrophages, cell death due to starvation was observed. DMEM: F12 supplemented with 2% of FBS was chosen to overcome this issue, allowing minimal nitrite and BH4 contamination while containing sufficient nutrients to obtain healthy cells. Indeed, despite some nitrite being detected, levels are negligible ($\sim 0.2 \mu\text{M}$) compared to LPS/IFN stimulated WT macrophages ($30\text{--}80 \mu\text{M}$ for 1×10^6 cells; data not shown).

To validate this improved protocol with experimental data, the isolation and characterization of BMDMs from a new BH4-deficient mouse model, the R26-CreER^{T2}Gch^{fl/fl} is presented here. BH4 is produced by the GTP cyclohydrolase I (*Gch1*) gene. As shown in **Figure 3A**, deficiency in *Gch1* leads to loss of BH4 and the resulting disappearance of NO and subsequently nitrite, and an increase in superoxide anion causing oxidative stress as demonstrated previously by McNeill et al.⁸. Although this protocol has already been well defined and used to culture other BH4-deficient macrophages from different Cre-system such as the Gch^{fl/fl}T2C model^{6,8}, the R26-CreER^{T2}Gch^{fl/fl} model is unique as it utilizes the conditional activation of the Cre-ER^{T2} system to remove *Gch1* gene following tamoxifen treatment (**Figure 3B,C**). This allows knockout at various time points and the use of internal control in the form of a vehicle vs. tamoxifen treatment. In this example, cells were treated with either vehicle (95% Ethanol) or $0.1/1.0 \mu\text{M}$ 4-OH tamoxifen on days 1 and 3 (both vehicle and tamoxifen stock diluted 1:100 in media before $0.7/7.0 \mu\text{L}$ added to 1 mL of the existing culture volume).

As seen in **Figure 3D**, GTPCH protein is abolished following Tamoxifen treatment in the R26-CreER^{T2}Gch^{fl/fl} cells but not in the Gch^{fl/fl} one. Importantly, both R26-CreER^{T2}Gch^{fl/fl} and Gch^{fl/fl} control cells are still able to produce iNOS following LPS/IFN stimulation (**Figure 3B, C**). These changes in Gch1 gene expression and the resulting alteration in GTPCH protein led to significantly perturbed intracellular BH4 levels and attenuated production of nitrite. As shown in **Figure 4**, BMDMs isolated and cultured from R26-CreER^{T2}Gch^{fl/fl} mice exhibited significantly diminished BH4 production and decreased nitrite accumulation in the media, compared to those from control GCH^{fl/fl} cells in the presence of tamoxifen. Similarly, the same cells cultured in LCM media also showed abolished Gch1 expression; although these cells still produced significant amounts of both BH4 and nitrite following knockout of Gch1 expression with 4 OH tamoxifen, possibly due to the contamination of media and FBS with BH4. This represents a clear improvement of the new method, over culturing the cells in L-cell-containing media.

Further characterization of this model demonstrates no significant differences in morphology between non-activated (M0) Gch^{fl/fl} and R26-CreER^{T2}Gch^{fl/fl} BMDMs at Day 8 following different concentrations of tamoxifen. As shown in **Figure 5**, both models display a similar amount of adherent cells made of a round shape with elongated extremities, typically the features expected of unstimulated macrophages⁹.

Taken together, these results demonstrate that this method of isolation and culture of BMDMs provides a pure population of cells suitable for the culture of murine macrophages. This method allows for the culture of murine macrophages without the interference of exogenous compounds present in some media formulations.

FIGURE AND TABLE LEGENDS:

Figure 1: Schematic diagram illustrating bone marrow cells isolation (Part 1) to the selection, differentiation, and stimulation of BMDMs (Part 2). (A) Under sterile conditions, dissected legs are placed in a clean bacteriological petri dish after being washed in 70% ethanol. (B) Muscles are carefully removed using forceps and scalpel scraping along the bones. (C) The extremities of the bones are then cut off to expose the bone marrow. (D) The bone marrow is flushed from the bones using a 10 mL syringe filled with 10 mL of PBS by inserting the needle into the lumen of the bone. (E) The needle is run up and down through the bone to ensure all bone marrow is dislodged. The bone should appear white and clear at that stage with the dislodged bone marrow collected in the petri dish. (F–G) Repeat for all bones, collecting the disaggregated bone marrow in the 1 mL syringe, and pass it through a 70 µm cell strainer into a clean 50 mL centrifuge tube. Spin down and resuspend cells in freezing media for later use. Part 2 shows the selection, differentiation, and stimulation of BMDMs

Figure 2: Nitrite and BH4 levels in DMEM: F12 + GM-CSF + M-CSF or DMEM: F12+ L-cell media. (A) Nitrite levels in different media were measured using the Griess Assay method. (B) BH4 and biopterins levels were measured in different media by HPLC quantification using a

BH4 standard. Data are expressed as the mean ($n = 3$) \pm SD. Data were analyzed using one-way ANOVA by multiple comparisons. Symbols represent $p < 0.05$ between groups.

Figure 3: Introducing the R26CreERT2 model. (A) Scheme illustrating the role of BH4 as a NOS cofactor in redox biology. (B) Schematic detailing the excision of the critical exons (2 and 3) in *Gch1* due to the flanking loxP sites and the conditional activation of Cre-ERT2 with tamoxifen in this murine model. (C) PCR (representative of $n = 3$ independent animals) demonstrating excision of the critical exon when BMDMs are treated with tamoxifen. WT mice produce a 1030 bp PCR product, while in the presence of the Cre, a 1392 bp product is produced, confirming excision of the critical exons. (D) Immunoblot of iNOS, GCH, and B-tubulin (representative of $n = 3$ independent animals).

Figure 4: Characterization of BH4-deficiency in macrophages. (A,B) qRT-PCR confirms loss of *Gch1* expression in the R26-CreERT²*Gch*^{fl/fl} model treated with tamoxifen. Blue = New MCSF method, Green = classical LCM method. (C,D) Analysis of intracellular BH4 by HPLC reveals that 0.1 μ M and 1.0 μ M are sufficient to diminish BH4 levels significantly. (E, F) Measurement of nitrite in media using the Griess assay shows that unstimulated BMDMs do not produce detectable levels of nitrite, whereas *Gch*^{fl/fl} and R26-CreERT²*Gch*^{fl/fl} BMDMs produce nitrite in the presence of LPS/IFN γ . Significantly, tamoxifen treatment of R26-CreERT²*Gch*^{fl/fl} significantly reduces nitrite levels in stimulated BMDMs. Data are expressed as the mean of ($n = 3$) \pm SD. Data were analyzed using one-way ANOVA by multiple comparisons. Symbols represent $p < 0.05$ between groups.

Figure 5: Comparison of BMDMs morphology. Photos obtained by optical microscopy of BMDMs at Day 8 with the varying treatment of tamoxifen. Scale is indicated in the image.

Table 1: Representative seeding densities.

DISCUSSION:

This BH4- and NO-deficient BMDMs culture protocol has been designed to investigate NO-redox biology in primary macrophages through reduction of tetrahydrobiopterin (BH4) and other interfering artifacts with the aim to enhance reliability and reproducibility of results obtained from these experimental models.

Critical steps include the use of the correct plastic ware. Macrophage progenitors are adherent cells and very sticky; therefore the use of non-tissue culture (TC) treated plates is crucial in selecting and isolating them from other progenitor cells, which could otherwise attach and reduce purity. On harvest day, detaching macrophages from plates require ice-cold PBS but using EDTA or even scraping cells very gently can be performed depending on the downstream application (lysed versus live cells experiment, for instance). Particular care should also be taken regarding contamination. While flushing out the bone marrow, potential cross-contamination with bacteria or viral particles from leftover fur and skin may occur. It is then essential to be as careful and sterile as possible; hence plunging dissected legs in 70%

ethanol for few minutes is encouraged. Similarly, using antibiotics while growing macrophages is highly recommended.

Another limitation of this protocol arises from the cell-plating density at Day 0. Flushed bone marrow contains a variety of cells, which can be wrongly counted and included as macrophage progenitors, thus leading to a false total cell number. To avoid the subsequent and potential variability, isolated macrophages can be gently flushed using warm PBS at Day 7 and re-plated at the correct density in 2%FBS DMEM: F12 at least 1 h before stimulation to allow adherence. Finally, checking the nitrite levels by Griess assay using media from grown macrophages is imperative to analyze data. On the plus side, this assay is quick and inexpensive to perform.

As demonstrated herein, this customized protocol is a more defined and improved alternative to the more common protocol used to isolate and cultivate macrophages using L-cell conditioned media (LCM). Indeed, one of the main concerns using LCM when studying NO-redox biology is its significant amounts of biopterins detected, leading to potential metabolic changes¹⁰. For instance, exogenous BH4 can quickly replenish deficient models and act as a cofactor for iNOS, leading to the unwanted production of nitric oxide. Another disadvantage of using LCM lies in its production - LCM is a mixture of colony-stimulating factors, cytokines, and other by-products secreted directly by L-929 cells, which can all affect macrophage physiology⁶. Despite its great supply in M-CSF, essential for macrophage proliferation and survival, the variation of each component from batch to batch increases the risk of variability across experiments.

To address both issues, this new protocol uses the well-defined DMEM: F12 media containing low levels of biopterins to which a controlled amount of purified M-CSF and GM-CSF is added. Both cytokines assist in the differentiation and growth of macrophages. M-CSF especially leads to the generation of BMDMs from bone marrow progenitor cells by assuring the differentiation of hematopoietic stem cells into macrophages¹¹. In addition, GM-CSF has been shown to boost inflammatory cytokine and NO production when added prior to stimulation, a real benefit when studying NO-redox biology^{12,13}.

The other main factor this new method addresses is that of FBS, usually used as a source of nutrients essential for the good health and growth of cells. Similar to LCM, FBS contains significant levels of biopterin. While complete serum starvation of the cells before stimulation was initially considered using OptiMEM + 0.2% BSA, macrophages showed signs of detachment, indicative of decreased cell viability as described by Bailey et al.⁶. However, as macrophages demonstrated an absolute requirement for serum, the Ultra-Low Endotoxin FBS from BioWest was selected. Batches were tested for biopterins and pre-selected before the bulk purchase to ensure a reliable and well-defined supply. To go further in the aim to reduce polluting sources of biopterins, decreased concentrations of FBS were therefore tested. Instead of using 10% serum as commonly used in cell culture, the FBS level is kept to 5% throughout the 7-day differentiation of bone marrow into macrophages and further reduced to 2% during overnight stimulation on the final day. This ensures negligible levels of biopterins detected but enough nutrients for the good health and adherence of macrophages. Although

this newly optimized protocol using recombinant M-CSF results in a more controlled environment for the culture and activation of primary macrophages, the main limitation is that this method is more expensive than using the LCM method.

Taking all these factors into consideration, the two methods were then directly compared. Importantly, the newly modified protocol presented herein using recombinant M-CSF and GM-CSF resulted in a more reproducible system where the media was devoid of contaminating BH4. The effects of this were two-fold; BH4-deficient cells were truly lacking BH4, which resulted in minimal detectable nitrite accumulation in the media following stimulation to M1 status with LPS. This was in contrast to those same BMDM cells cultured in LCM, where significant BH4 and nitrite were detected.

To conclude, the strength of this method lies in the effort of controlling biopterins levels by thoroughly assessing each parameter that could affect NO and redox signaling in macrophages. In particular, this ensures maximum reproducibility and standardization in the NO-redox biology field.

ACKNOWLEDGMENTS:

This work was supported by the British Heart Foundation Intermediate Fellowship awarded to M.J.C. (FS/14/56/31049), British Heart Foundation Programme grants (RG/17/10/32859 and RG/12/5/29576), Wellcome Trust (090532/Z/09/Z), and the NIH Research (NIHR) Oxford Biomedical Research Centre. The authors would also like to acknowledge support from the BHF Centre of Research Excellence, Oxford (RE/13/1/30181 and RE/18/3/34214)

DISCLOSURES:

The authors declare no competing interests.

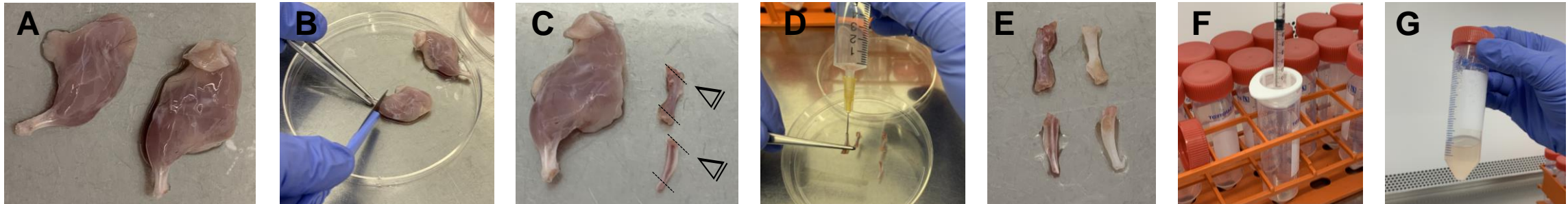
REFERENCES :

- 1 Zajd, C. M. et al. Bone marrow-derived and elicited peritoneal macrophages are not created equal: The questions asked dictate the cell type used. *Frontiers in Immunology*. **11**, 269 (2020).
- 2 Murray, P. J. et al. Macrophage activation and polarization: nomenclature and experimental guidelines. *Immunity*. **41** (1), 14–20 (2014).
- 3 Zhao, Y. L. et al. Comparison of the characteristics of macrophages derived from murine spleen, peritoneal cavity, and bone marrow. *Journal of Zhejiang University Science B*. **18** (12), 1055–1063 (2017).
- 4 Nasser, H. et al. Establishment of bone marrow-derived M-CSF receptor-dependent self-renewing macrophages. *Cell Death Discovery*. **6**, 63 (2020).
- 5 Stanley, E. R., Heard, P. M. Factors regulating macrophage production and growth. Purification and some properties of the colony stimulating factor from medium conditioned by mouse L cells. *Journal of Biological Chemistry*. **252** (12), 4305–4312 (1977).
- 6 Bailey, J. D. et al. Isolation and culture of murine bone marrow-derived macrophages for nitric oxide and redox biology. *Nitric Oxide*. **100–101**, 17–29 (2020).

- 7 Shiva, S. Nitrite: A physiological store of nitric oxide and modulator of mitochondrial
function. *Redox Biology*. **1** (1), 40–44 (2013).
- 8 McNeill, E. et al. Regulation of iNOS function and cellular redox state by macrophage
Gch1 reveals specific requirements for tetrahydrobiopterin in NRF2 activation. *Free Radical
Biology and Medicine*. **79**, 206–216 (2015).
- 9 McWhorter, F. Y., Wang, T., Nguyen, P., Chung, T., Liu, W. F. Modulation of
macrophage phenotype by cell shape. *Proceedings of the National Academy of Sciences of the
United States of America*. **110** (43), 17253–17258 (2013).
- 10 Bailey, J. D. et al. Nitric oxide modulates metabolic remodeling in inflammatory
macrophages through TCA cycle regulation and itaconate accumulation. *Cell Reports*. **28** (1),
218–230 e217 (2019).
- 11 Hamilton, T. A., Zhao, C., Pavicic, P. G., Jr., Datta, S. Myeloid colony-stimulating factors
as regulators of macrophage polarization. *Frontiers in Immunology*. **5**, 554 (2014).
- 12 Na, Y. R. et al. GM-CSF induces inflammatory macrophages by regulating glycolysis and
lipid metabolism. *Journal of Immunology*. **197** (10), 4101–4109 (2016).
- 13 Sorgi, C. A. et al. GM-CSF priming drives bone marrow-derived macrophages to a pro-
inflammatory pattern and downmodulates PGE2 in response to TLR2 ligands. *PLoS One*. **7** (7),
e40523 (2012).

Figure 1

PART 1: Isolation of bone marrow cells



PART 2: Selection, differentiation and stimulation of BMDMs

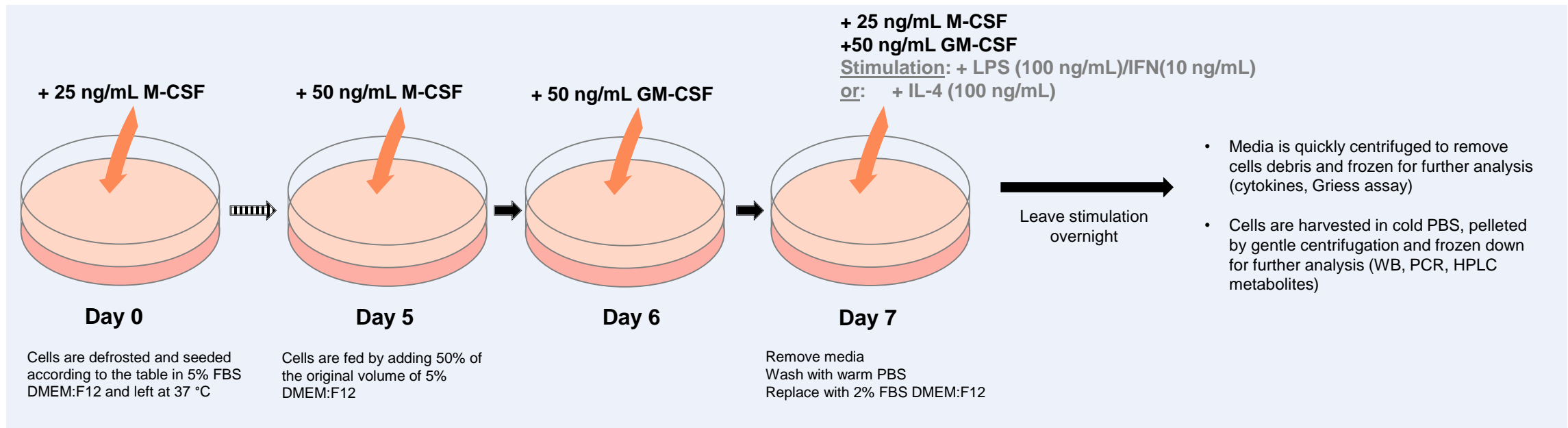


Figure 2.

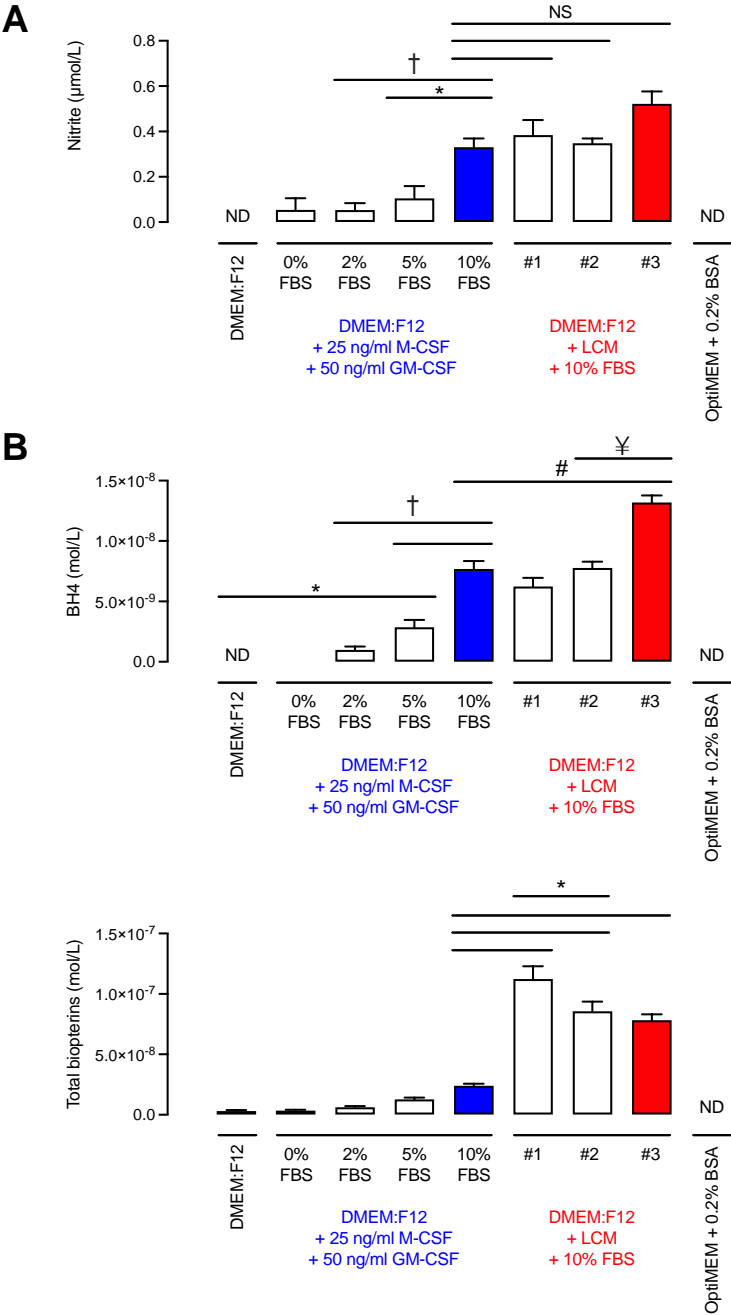


Figure 3.

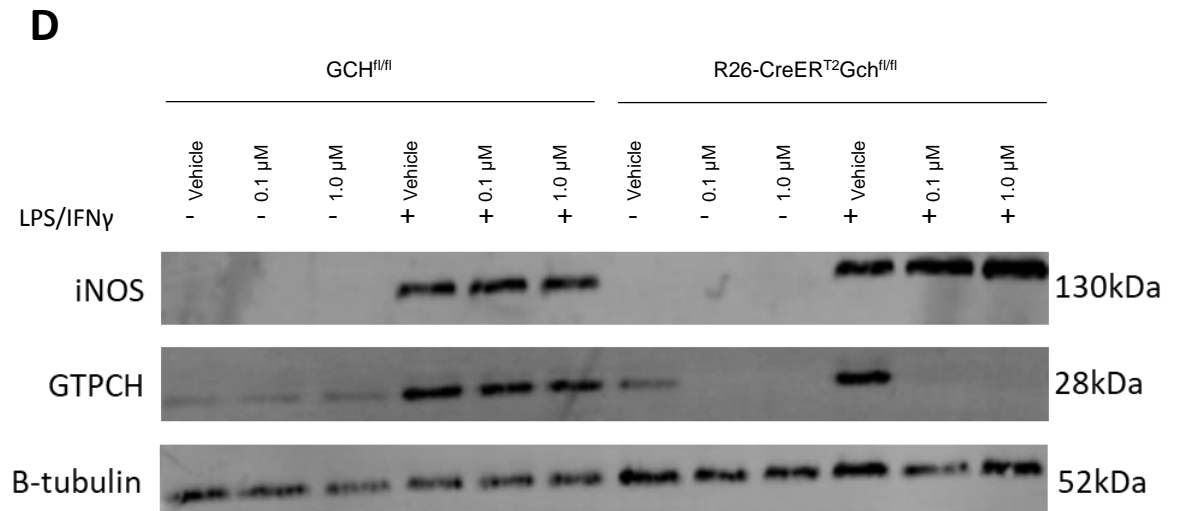
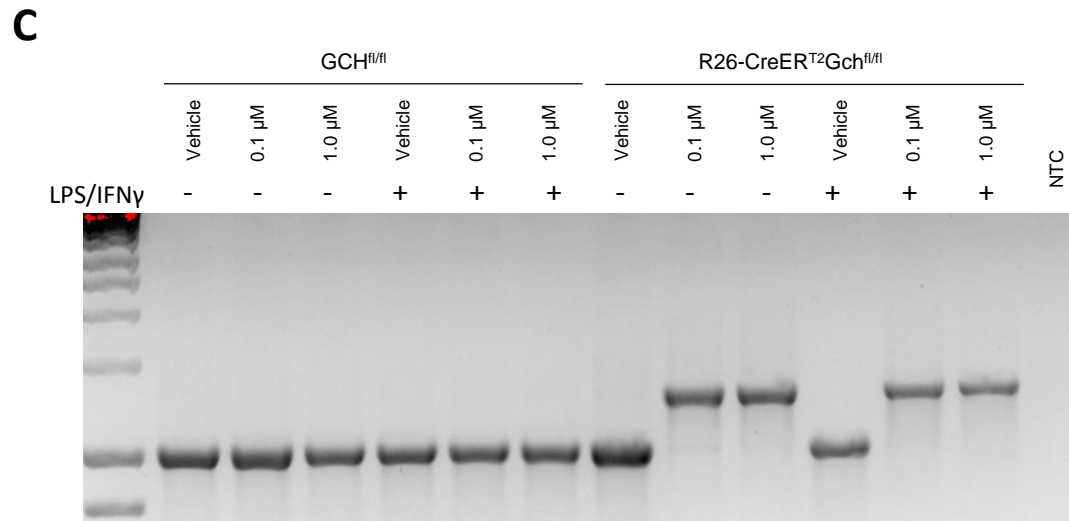
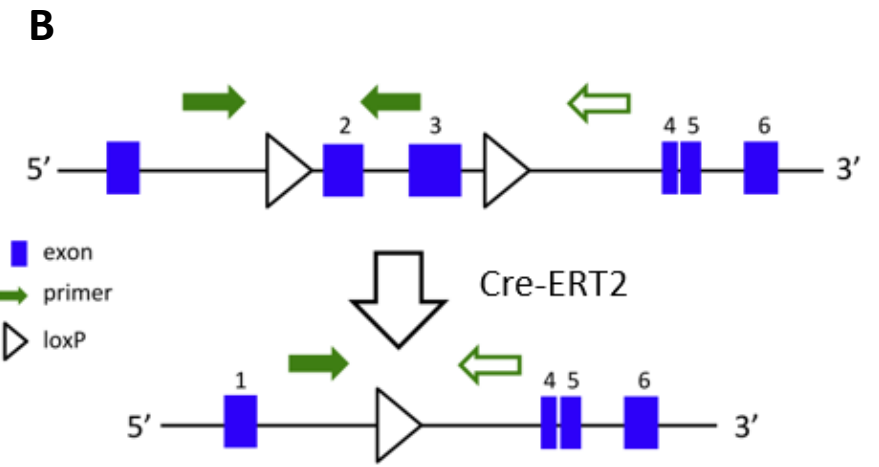
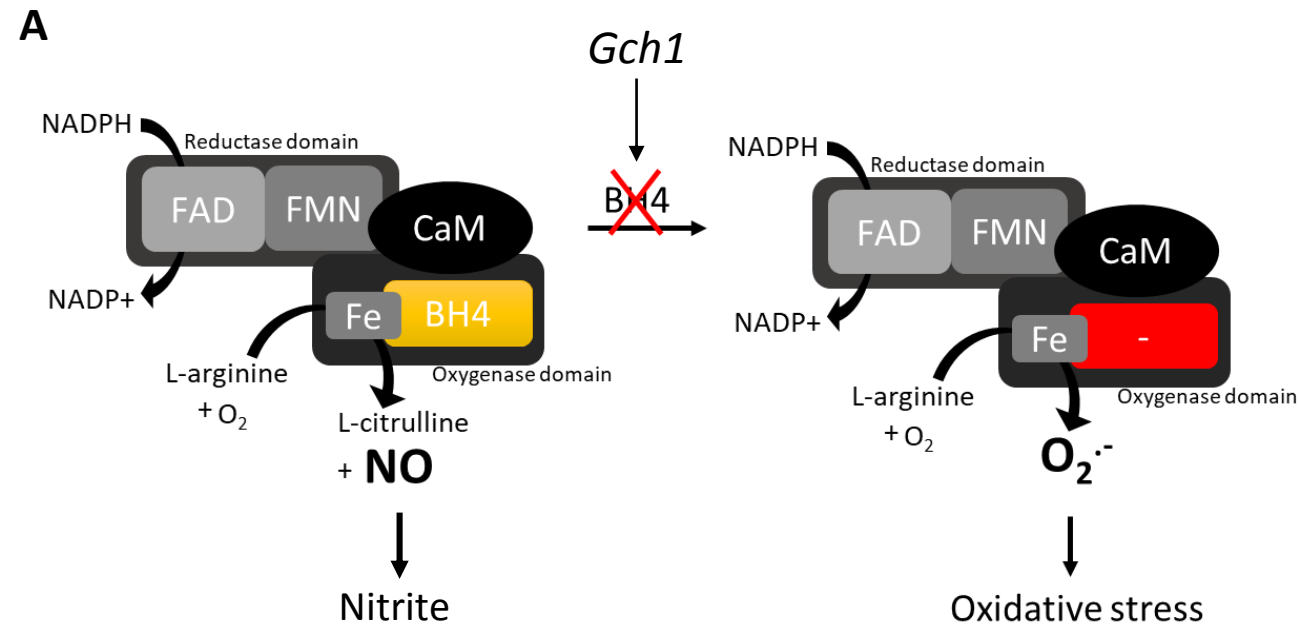


Figure 4.

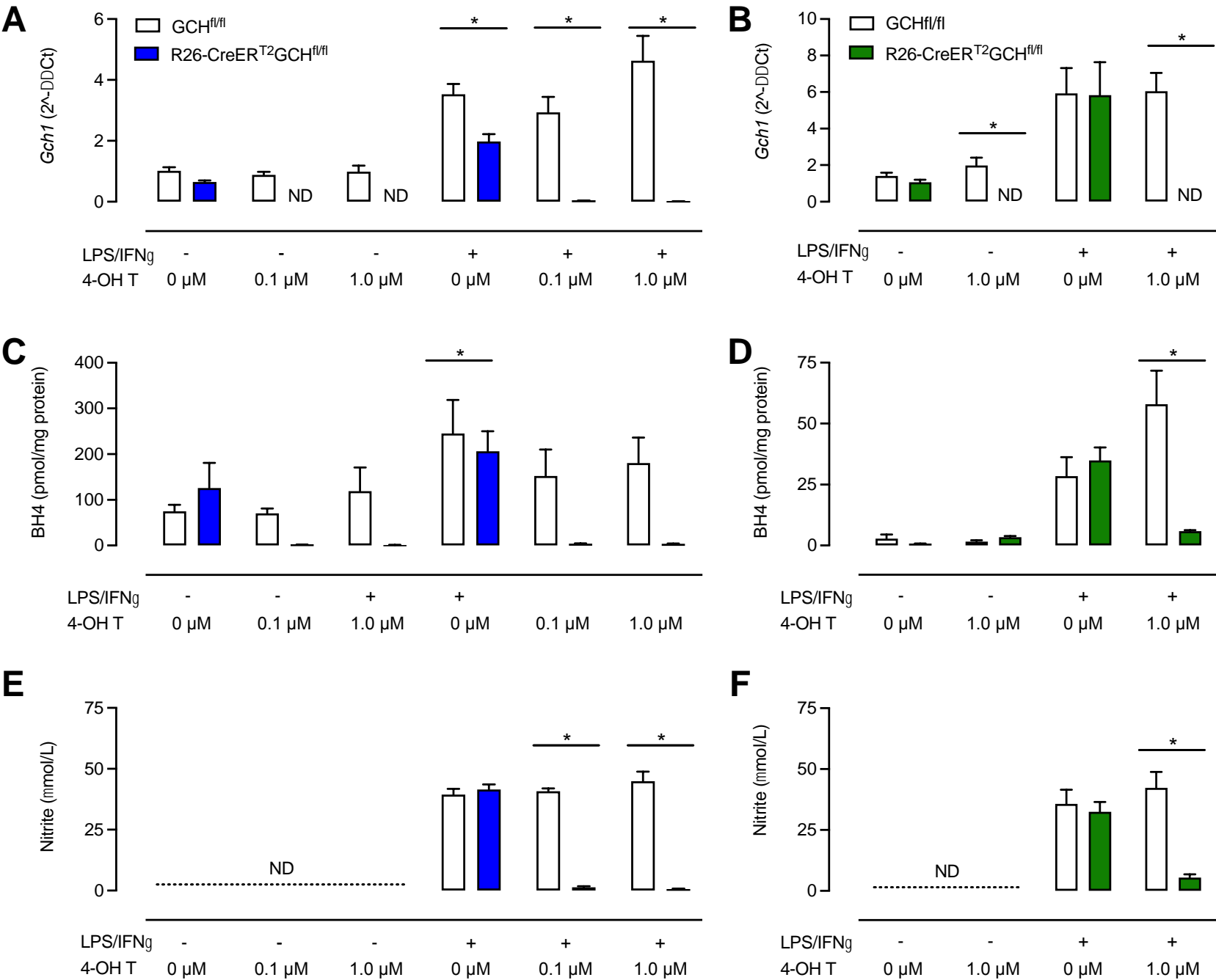


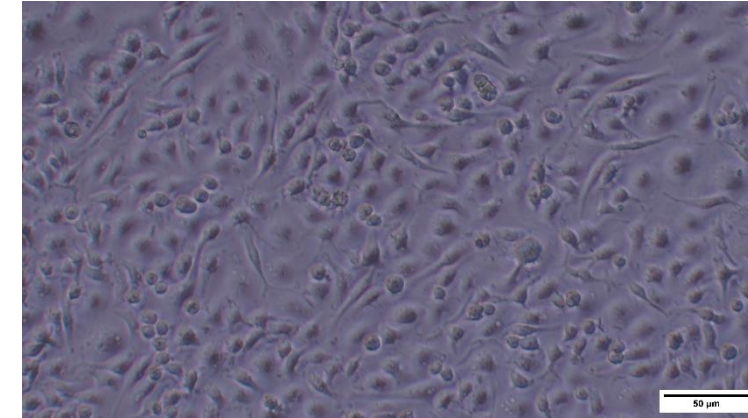
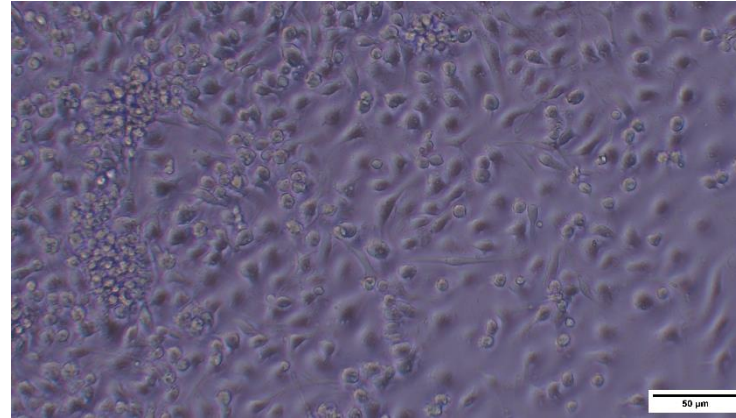
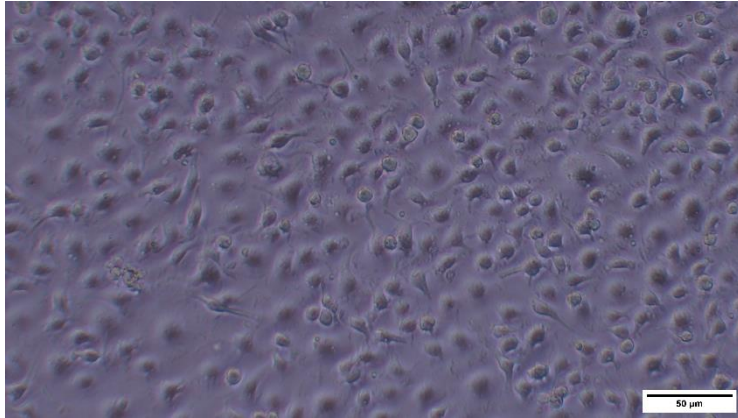
Figure 5.

-Tamoxifen

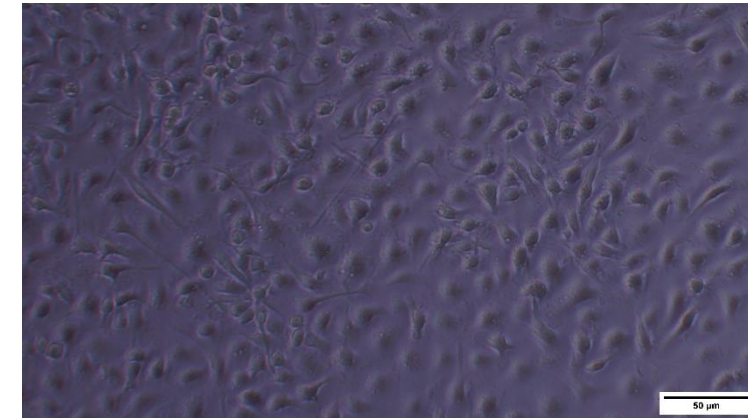
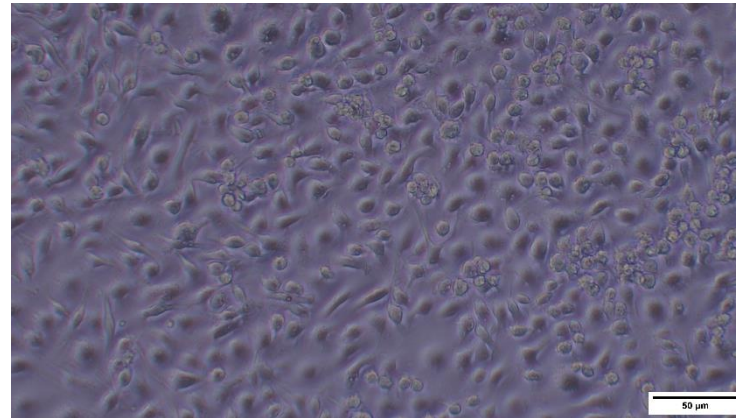
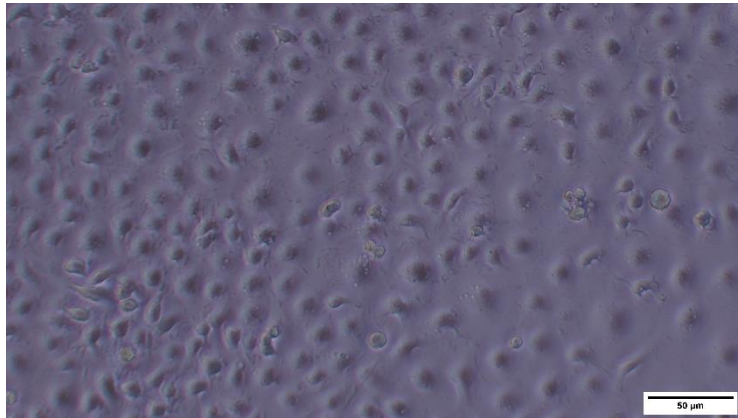
0.1 μ M Tamoxifen

1.0 μ M Tamoxifen

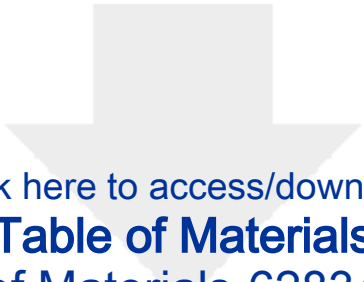
Gch^{fl/fl}



R26-
CreER^{T2}
Gch^{fl/fl}



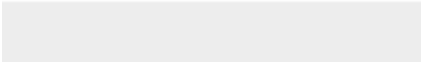
Culture Dish	Media Volume	Seeding Density
12 well dish	1 mL	500,000 cells
6 well dish	2 mL	1,000,000 cells
100 mm dish	10 mL	3,000,000 cells
75 cm ² flask	15 mL	5,000,000 cells



[Click here to access/download](#)

Table of Materials

Table of Materials-62834R2.xls



Division of Cardiovascular Medicine
Radcliffe Department of Medicine,

Dr Mark J. Crabtree

Associate Professor

Level 6, West Wing, John Radcliffe Hospital,
Oxford, OX3 9DU, UK.

Tel: +44(0)1865 287662

Email: mark.crabtree@well.ox.ac.uk

Fax: +44(0)1865 287664

Web: <https://www.rdm.ox.ac.uk/people/mark-crabtree>



30th September 2021

Professor Erika Palmieri
Guest Editor
JoVE

Dear Professor Palmieri,

Re: Nicol et al – “An optimized method for the isolation, culture and activation of murine bone marrow-derived macrophages for the study of nitric oxide and redox biology in immunometabolism”.

We are pleased to submit this revised manuscript for consideration for publication in the collection entitled “*Methods for detection and manipulation of Nitric Oxide and its radicals for analysis of immunometabolic reprogramming*” in JoVE. We have addressed all the comments raised by the Reviewers. In particular, we have revised the text and figures to highlight the advantages of this new method, over old established methods using conditioned media.

We confirm that all authors have read and approved submission of the manuscript and the manuscript has not been published, and is not being considered for publication elsewhere.

I hope you can now look favourably on this submission.

Yours sincerely,

A handwritten signature in blue ink, appearing to read 'Mark J. Crabtree'.

Mark J. Crabtree PhD

Please note that the reviewers raised some significant concerns regarding your method and your manuscript. Please revise the manuscript to thoroughly address these concerns. Additionally, please describe the changes that have been made or provide explanations if the comment is not addressed in a rebuttal letter. We may send the revised manuscript and the rebuttal letter back to peer review

Reviewers' comments:

Reviewer #1:

Manuscript Summary:

The manuscript "Isolation and in vitro culture of bone marrow derived macrophages for the study of NO-redox biology" describes a novel, standardized method for differentiation of bone marrow derived macrophages designed to improve NO-redox biology studies. The aim is clearly expressed in the title.

The protocol has been previously used by the authors, demonstrating the advantages of this culture method in past publications. The present manuscript includes a very detailed explanation of the protocol and materials, thorough enough to replicate it successfully. In my opinion, the publication of this protocol would be of great value for researchers in the macrophage biology field in general.

[We thank the Reviewer for their helpful response and comments and have taken the appropriate steps to address them and improve our manuscript. Specific alterations are detailed below in response to each concern.](#)

Major Concerns:

No

Minor Concerns:

I propose a few minor revisions:

-It is important to indicate the percentage of differentiation to macrophages obtained using the M-CSF and GM-CSF. I.e. assessing CD45+/CD11b+ expression by flow cytometry.

Culture purity must be provided as part of the characterization.

[We agree that this is an essential value to include as part of our characterisation and have updated our manuscript as suggested to refer to our previously published work covering this in additional detail. Our previous work, now cited in this current article, provides additional information on the characterisation of the cells. The text now included is:](#)

[“The protocol described herein has been demonstrated to produce a macrophage culture above 95% purity when assessed for the macrophage surface markers CD45 and CD11b by flow cytometry^{6”}.](#)

-It would be informative to indicate the approximate number of precursor cells obtained from a given number of legs, following this protocol.

We agree that this would be very useful to any reader of this manuscript. We have now included this and have adjusted the manuscript as follows:

“A complete pair of legs from one mouse provides 15-20 million pre-cursor cells.”

-Page 2, line 14: "tetrahydrobiopterin (BH4)- and iNOS deficient primary murine macrophages" is missing a dash after iNOS...tetrahydrobiopterin (BH4)- and iNOS-deficient primary murine macrophages.

We thank the Reviewer for their insightful comments and have edited manuscript accordingly.

“tetrahydrobiopterin (BH4)- and iNOS- deficient primary murine macrophages”

-Page 4, line 119: refers to "25 mm gauge needle" but Table Materials (Page 14) refers to needle 25G 0.5x16mm", clarify one.

We agree with the Reviewer's comments and have edited manuscript accordingly...

“to a 25G 0.5 x 16 mm needle”

-Page 4 Line 134: Starting from point 4 the authors missed sub-labeling 4.1, 4.2 and so on.

We have edited the manuscript accordingly.

-Page 4 Line 147, the authors refer to point 6.6 which is missed. Sub-labeling really helps in following the steps.

We have edited the manuscript accordingly.

-Page 6 Line 179, check the sub labels because it gets confusing, for step 9.4 writing sub levels 9.4.1-9.4.2-9.4.3 would make it more clear.

We agree with all of the above and have edited the manuscript accordingly.

-Table Materials, typo in Multidish 12...

We have edited the manuscript as suggested.

-Table Materials, DMSO without product details should be removed

We agree with all of the above and have edited the manuscript accordingly.

Reviewer #2:

Manuscript Summary:

The manuscript presented by M. Diotallevi describes a method for obtaining primary bone marrow-derived macrophages suitable for studying the role of various treatment conditions related to NO metabolism. The rationale behind the well-described protocol is the elimination of factors influencing NO generation by unknown compounds, which may be present in poorly defined culture media. For demonstrating the suitability of their protocol, authors use primary macrophages from mice with a conditional GTP-cyclohydroxylase (GTPCH) deficiency and show the expected reduction in NO production in their model.

Major Concerns:

There are some issues, which either should be addressed, or modified.

1) Authors aimed at establishing a protocol to enhance reliability and reproducibility of results related to NO metabolism of primary macrophages, however, they do not show data regarding their improvements. One possibility would be to show the results obtained with the new protocol in comparison with the previous. Also, it would be helpful to show the reproducibility of experiments done at different time points, or comparing the responses of macrophage preparations from different mice.

Thank you for these comments. We have updated the protocol to highlight the advantages of our method over the previous L-cell supplementation strategy. To this end, we directly compared both media formulations (L-cell and recombinant MCSF) before exposure to cells (Figure 2). In this revised manuscript, as suggested by this Reviewer, we also now show data testing the effect that these media formulations had on BMDMs following isolation and culture (Figure 4). In summary, the new method of culture using highly controlled conditions allows the culture of cells in media that is lacking in both BH4 and nitrite, compared to significant amounts found in L-cell conditioned media with low and high levels of FBS.

We have now included this in the '*Representative Results*' section to further detail why one might select our method over the previous method. In addition we have provided some context from our previous work which further detailed this protocol in a different model....

“Before demonstrating the efficiency of this protocol in macrophages, nitrite and BH4 levels were assessed in media supplemented with 10% of FBS containing either 10% of LCM or only recombinant M-CSF and GM-CSF. Nitrite, although considered for a long time as an end product of nitric oxide metabolism, is now regarded as a physiological storage of nitric oxide which can be recycled when required and thus is often used as an indicator of nitric oxide bioavailability. BH4 is an essential cofactor of NOS for NO production. As seen in **Figure 2**, media supplemented with 10% FBS had similar nitrite levels regardless of the presence of M-CSF/GM-CSF or LCM. However more variability in between different LCM batches was observed. This observation also applied to the BH4 measurement. In fact, one batch of LCM (batch #3) had significantly higher level of BH4 than the other two (batches #1 and #2). Furthermore, LCM batches contained significantly more biopterin than in media supplemented with 10% FBS and recombinant cytokines. Significant variability of total biopterins between

batches were also measured. These results demonstrate the importance of using a less variable source of M-CSF than LCM.

Moreover, media supplemented with 10% FBS contained significantly higher levels of nitrite compared with media containing either 2% or 5% of FBS. The difference between 10% and 5% was highly significant ($p < 0.05$) for BH4. However, similar levels of biopterins were quantified. In comparison, OptiMEM + 0.2% BSA was devoid of nitrite and BH4, making it a very clean and suitable media. However, as described by Bailey et al, although OptiMEM is meant to be used only once overnight when stimulating macrophages, cell death due to starvation was observed. To overcome this issue, DMEM:F12 supplemented with 2% of FBS was chosen, allowing minimal nitrite and BH4 contamination, while containing sufficient nutrients to obtain healthy cells. Indeed, despite some nitrite being detected, levels are negligible ($\sim 0.2 \mu\text{M}$) compared to LPS/IFN stimulated WT macrophages (30 to $80 \mu\text{M}$ for 1×10^6 cells; data not shown)."

And most relevantly, how would be the results, when using a stimulant, which is a less strong iNOS inducer, compared to LPS/interferon-gamma treatment, since this is expected to render less homogeneous results, when the surrounding conditions are poorly defined.

Concerning the use of a "less strong iNOS inducer":

Whilst we agree that this would be an interesting experiment and certainly relevant to the scientific findings if this current work, we respectfully consider that this would not contribute to the aims of the manuscript which are to develop, present and characterize a new protocol. More information on iNOS activation in BMDMs can be found in our recent works cited herein.

However, to address the interesting comment made by the Reviewer – a reduced induction of iNOS stimulation would result in a diminished level of NO. It would therefore be expected that the presence of nitrite and/or BH4 in the culture media would then have a larger impact on the measurable levels of these compounds. Our demonstration that the measurement of these compounds is confounded in the presence of a strong inducer would only be further exemplified in the presence of a weak inducer where the contribution from contaminated sources would be even greater.

2) In terms of reproducibility it is very important to indicate the number of animals that was used for the results displayed in Fig. 2. Is $n=1$ referring to one animal? If not, it would be more convincing to show results derived from different animals. If no data are available, please address this issue in the discussion.

We acknowledge the ambiguity in this portion of the manuscript and have edited the figure and text accordingly. Each 'n' represents one mouse.

3) Since authors claim that this protocol eliminates the potential influence of unknown compounds, especially biopterins, on NO metabolism, it would have been interesting to correlate the presence of these compounds with the NO production. Is it really possible to determine nitrite by Griess reaction in non-stimulated macrophages under these circumstances?

This is indeed a very interesting experiment, but one that the Authors believe would detract from the main aims of this protocol for JoVE. The current work describes a protocol that diminishes contaminating species below the level required to have significant effects on NOS. We have modified the manuscript to highlight the conditions where BH4 and/or nitrite are present, and this does indeed correlate with the relative medias – each giving the different results with respect to cellular BH4 and the resulting production of nitrite. A more detailed analysis would be very interesting, but would require exposing cells to different levels of tamoxifen to titrate the levels of BH4 and nitrite accordingly, beyond the scope of the objectives of this article.

As the Reviewer suggests, the Griess assay is not the most sensitive of assay, however it is sufficient to detect levels of nitrite in media, and that produced from activated cells. Other methods could be used where investigators are requiring a more sensitive analysis, such as in endothelial cells.

4) Authors suggest that their protocol is suited for studying the role of redox biology, especially the formation of reactive oxygen and nitrogen species (ROS and RONS), but no evidences are given. To my opinion, the manuscript would greatly benefit from showing the respective data. Particularly, since deletion of GTPCH is expected to enhance production of ROS, and thereby to impact on cell viability.

We agree with the reviewer's comment of the importance to include evidence of altered ROS and RNS following GTPCH deletion. We therefore updated our manuscript accordingly to refer to our previous work which examines the consequence of GTPCH deletion by measuring superoxide anion and nitric oxide. This has been added throughout the manuscript. (McNeill et al, 2015. FRBM).

5) To my opinion, the nitrite content in the cell culture medium must be normalized with the underlying cell number, since absence of tetrahydrobiopterin (BH4) deviates iNOS to produce ROS, and excess of ROS may compromise cell viability. Further it would be nice to demonstrate the dependence of the NO generation, and thus the functionality of the experimental model, by using dihydrobiopterin (BH4 precursor, PMID: 7678692) to overcome the GTPCH-deficiency. Please add pictures of both cell types treated with LPS and tamoxifen to the Fig. 3.

We agree with the reviewer's comments about cell viability. Although other constitutive forms of NOS readily become 'uncoupled' from arginine oxidation in the absence of BH4, the evidence that this happens to iNOS is inconclusive. Indeed, we have previously demonstrated increased ROS (not from NOS) in GCH deficient macrophages, but this has no effect on cell viability. We have now added pictures of Gch^{fl/fl} and R26-CreER^{T2}Gch^{fl/fl} following tamoxifen treatment, as requested to Figure 5. Again, the effects of supplementation using dihydrobioptein would be interesting, but this can be found in other publications outlining the downstream effects of BH4 in macrophages. (McNeill et al, 2015. FRBM).

Minor Concerns:

1) Please edit the manuscript according the following points: please spell out abbreviations at the first time they are used followed by the abbreviation in parenthesis (line 29, 47, 85, line

161). Do not use capitalised letters, when inappropriate (line 35). Please use uniform abbreviations (GTPCH vs GCH in line 45 and line 211 respectively), and congruent name for substances (iNOS vs NOS2, line 256).

Thank you for these comments, we have adjusted the manuscript as appropriate in the noted locations.

2) Line 64: authors state that macrophages of iNOS deficient mice were used. However, data from these macrophages were not shown. Please comment or specify.

Thank you for this comment. The data from iNOS deficient mice has been published by our group previously and we saw this as an appropriate opportunity to demonstrate the efficacy of this protocol in a new model which focuses on BH4 deficiency. This is also more relevant given the presence of bipterins in the alternative L-cell media method as demonstrated now in our updated figure 1.

3) Omit line 89.

Manuscript has been corrected.

4) Line 143: please add the receipt of the lysis solution.

This product is purchased ready to use and has been added to the table of materials.

5) Line 164: please subscribe index.

This has been altered as suggested.

6) Line 174: please format adequately.

Formatting has been corrected throughout the protocol.

7) Line 198: please spell out full name of GCh1 gene and add annotation number.

Thank you for bringing this to our attention, the manuscript has been corrected accordingly.

8) Line 199: please use uniform format for referencing to figures (bold, or normal, see line 202).

Thank you for bringing this to our attention, the manuscript has been corrected accordingly.

9) Line 202: how was the volume of ethanol solution added in % of the entire incubation medium?

We understand that this needs clarifying and have adjusted the manuscript as follows.

“(both vehicle and tamoxifen stock diluted 1:100 in media before 7.0 µL added to 1 mL existing culture volume)”

10) Line 227: please indicate the relevant reference for the details of the construction of the GTPCH1 deficient mice in the legend. Please add GTPCH (and thus its role for NO metabolism) in the scheme.

We have updated the scheme as requested to clarify this figure.

11) Line 235: please indicate culture time and incubation conditions for each stimulant in the figure legends. Please indicate the relevant references for the methodological details (immunoblotting, PCR, Griess reaction, ect) in the legend, or add details.

We have included time and incubation details in the figure as requested and updated the legend.

12) Line 238: please indicate the concentrations of tamoxifen used in the legend, and add the tamoxifen treatment in the respective figures.

Thank you for pointing this issue out. We have adjusted the relevant portions of the manuscript as appropriate.

13) Line 282: Please specify how batches were tested for biopterin levels, or give the respective reference.

Thank you for highlighting this oversight. We have now included the reference for this work at the appropriate place in the manuscript.

Bailey, J. D. et al. Isolation and culture of murine bone marrow-derived macrophages for nitric oxide and redox biology. *Nitric Oxide*. 100-101 17-29, (2020).

Reviewer #3:

Manuscript Summary:

Mouse bone marrow cell purification and macrophage differentiation are techniques that deserves an audiovisual publication. That would be very helpful for researchers starting out on such experiments.

The authors propose the use of pure growth factors, which makes the procedure more expensive and may not be essential when the cells will be used for another purpose, but it is important to study BH4 deficit.

The steps listed in the procedure are clearly explained and all materials are listed.

Major Concerns:

Although the model is well explained, I consider that the appropriate control is the comparison of the expression of iNOS or the production of nitric oxide in macrophages obtained using both protocols.

"The aim of this study was to establish an optimised and standardised method for the isolation and culture of BMDMs."

To achieve the objective it would be desirable to observe the difference with the traditional method.

Thank you for this comment. This is closely related to a previous issue raised by reviewer 2 and hence we have addressed both comments in the same section.

We have updated the protocol to highlight the advantages of our method over the previous L-cell supplementation strategy. To this end, we directly compared both media formulations (L-cell and recombinant MCSF) before exposure to cells (Figure 2). In this revised manuscript, as suggested by this Reviewer, we also now show data testing the effect that these media formulations had on BMDMs following isolation and culture (Figure 4). In summary, the new method of culture using highly controlled conditions allows the culture of cells in media that is lacking in both BH4 and nitrite, compared to significant amounts found in L-cell conditioned media with low and high levels of FBS.

We have now included this in the '*Representative Results*' section to further detail why one might select our method over the previous method. In addition we have provided some context from our previous work which further detailed this protocol in a different model....

“Before demonstrating the efficiency of this protocol in macrophages, nitrite and BH4 levels were assessed in media supplemented with 10% of FBS containing either 10% of LCM or only recombinant M-CSF and GM-CSF. Nitrite, although considered for a long time as an end product of nitric oxide metabolism, is now regarded as a physiological storage of nitric oxide which can be recycled when required and thus is often used as an indicator of nitric oxide bioavailability. BH4 is an essential cofactor of NOS for NO production. As seen in **Figure 2**, media supplemented with 10% FBS had similar nitrite levels regardless of the presence of M-CSF/GM-CSF or LCM. However more variability in between different LCM batches was observed. This observation also applied to the BH4 measurement. In fact, one batch of LCM (batch #3) had significantly higher level of BH4 than the other two (batches #1 and #2). Furthermore, LCM batches contained significantly more biopterin than in media supplemented with 10% FBS and recombinant cytokines. Significant variability of total biopterins between batches were also measured. These results demonstrate the importance of using a less variable source of M-CSF than LCM.

Moreover, media supplemented with 10% FBS contained significantly higher levels of nitrite compared with media containing either 2% or 5% of FBS. The difference between 10% and 5% was highly significant ($p < 0.05$) for BH4. However, similar levels of biopterins were quantified. In comparison, OptiMEM + 0.2% BSA was devoid of nitrite and BH4, making it a very clean and suitable media. However, as described by Bailey et al, although OptiMEM is meant to be used only once overnight when stimulating macrophages, cell death due to starvation was observed. To overcome this issue, DMEM:F12 supplemented with 2% of FBS was chosen, allowing minimal nitrite and BH4 contamination, while containing sufficient nutrients to obtain healthy cells. Indeed, despite some nitrite being detected, levels are negligible ($\sim 0.2 \mu\text{M}$) compared to LPS/IFN stimulated WT macrophages (30 to 80 μM for 1×10^6 cells; data not shown).”