

Journal of Visualized Experiments

Detection of protein aggregation using fluorescence correlation spectroscopy.

--Manuscript Draft--

Article Type:	Invited Methods Collection - Author Produced Video
Manuscript Number:	JoVE62576R3
Full Title:	Detection of protein aggregation using fluorescence correlation spectroscopy.
Corresponding Author:	Akira Kitamura Hokkaido Daigaku Sapporo, Hokkaido JAPAN
Corresponding Author's Institution:	Hokkaido Daigaku
Corresponding Author E-Mail:	akita@sci.hokudai.ac.jp
Order of Authors:	Akira Kitamura Ai Fujimoto Masataka Kinjo
Additional Information:	
Question	Response
Please indicate whether this article will be Standard Access or Open Access.	Standard Access (US\$1200)
Please specify the section of the submitted manuscript.	Biology
Please confirm that you have read and agree to the terms and conditions of the author license agreement that applies below:	I agree to the Author License Agreement
Please provide any comments to the journal here.	Very nice journal!!
Please indicate whether this article will be Standard Access or Open Access.	Standard Access (\$1400)

TITLE:

Detection of protein aggregation using fluorescence correlation spectroscopy

AUTHORS AND AFFILIATIONS:

Akira Kitamura, Ai Fujimoto, Masataka Kinjo

Laboratory for Molecular Cell Dynamics, Faculty of Advanced Life Science, Hokkaido University

akita@sci.hokudai.ac.jp

fujimoto.ai.n2@elms.hokudai.ac.jp

kinjo@sci.hokudai.ac.jp

CORRESPONDING AUTHOR:

Akira Kitamura

SUMMARY:

We here introduce a procedure to measure protein oligomers and aggregation in cell lysate and live cells using fluorescence correlation spectroscopy.

ABSTRACT:

Protein aggregation is a hallmark of neurodegenerative disorders such as amyotrophic lateral sclerosis (ALS), Alzheimer's disease (AD), Parkinson's disease (PD), Huntington's disease (HD), and so on. To detect and analyze soluble or diffuse protein oligomers or aggregates, fluorescence correlation spectroscopy (FCS), which can detect the diffusion speed and brightness of a single particle with a single molecule sensitivity, has been used. However, the proper procedure and know-how for protein aggregation detection have not been widely shared. Here, we show a standard procedure of FCS measurement for diffusion properties of aggregation-prone proteins in cell lysate and live cells: ALS-associated 25 kDa carboxyl-terminal fragment of TAR DNA/RNA-binding protein 43 kDa (TDP25) and superoxide dismutase 1 (SOD1). The representative results show that a part of aggregates of green fluorescent protein (GFP)-tagged TDP25 was slightly included in the soluble fraction of murine neuroblastoma Neuro2a cell lysate. Moreover, GFP-tagged SOD1 carrying ALS-associated mutation shows a slower diffusion in live cells. Accordingly, we here introduce the procedure to detect the protein aggregation via its diffusion property using FCS.

INTRODUCTION:

Protein aggregations involving neurodegenerative disorders such as amyotrophic lateral sclerosis (ALS), Alzheimer's disease, Parkinson's disease, Huntington's disease, and so on¹ are known to be toxic and would disturb protein homeostasis (proteostasis) in the cells and organs, that could then lead to aging². The clearance of protein aggregation is expected as a therapeutic strategy; however, chemicals that prevent protein aggregation formation and degrade protein aggregates (e.g., small molecules or drugs) have not been established yet. Moreover, how protein aggregation exerts toxicity remains elusive. Therefore, to promote research projects related to protein aggregation, it is important to introduce high throughput procedures to simply detect

protein aggregation. Protein aggregation detection using antibodies recognizing the conformation of protein aggregation and aggregation-specific fluorescent dye has been widely used³. However, it is difficult to detect the aggregation, especially in live cells using such classical procedures.

Förster resonance energy transfer (FRET) is a procedure to detect protein aggregation and structural change. However, FRET is unable to analyze protein dynamics (e.g., diffusion and oligomerization of protein in live cells)³. Therefore, we introduce here a simple protocol to detect protein aggregation in solution (e.g., cell lysate) and live cells using fluorescence correlation spectroscopy (FCS), which measures the diffusion property and brightness of fluorescent molecules with single molecule sensitivity⁴. FCS is a photon-counting method by using a laser scan confocal microscope (LSM). Using a highly sensitive photon-detector and calculation of autocorrelation function (ACF) of photon arrival time, the pass through time and brightness of the fluorescent molecules in the detection volume is measured. The diffusion slows with an increase of molecular weight; thus, intermolecular interaction can be estimated using FCS. Even more powerfully, an increase in the brightness of the fluorescent molecule indicates homo-oligomerization of the molecules. Therefore, FCS is a powerful tool to detect such protein aggregation.

PROTOCOL:

1. Materials and reagents

1.1. Use pyrogenic free solutions and medium for cell culture (**Table 1**).

1.2. Prepare solutions for the biochemical experiment using ultrapure water and use as DNase/RNase free.

1.3. Select an appropriate FBS for the cell culture with a lot check process. Since the selected FBS lot changes regularly, the catalog and lot number for FBS cannot be represented here.

1.4. Plasmid DNA

1.4.1. Prepare pmeGFP-N1⁵ for eGFP monomer expression; pmeGFP-C1-TDP25⁶ for GFP-TDP25 expression; pmeGFP-N1-SOD1-G85R⁷ for SOD1-G85R-GFP expression; and pCAGGS⁸ as a carrier.

NOTE: meGFP is a monomeric variant carrying A206K mutation of enhanced GFP (eGFP). TDP25 is an ALS-associated C-terminal fragment of TDP-43. SOD1-G85R is an ALS-associated mutant of SOD1.

1.5. Cell strain

1.5.1. Use murine neuroblastoma Neuro2a cells.

NOTE: Neuro2a cells have high transfection efficiency and highly express exogenous proteins. For TDP25 expression, cell strains having high expression efficiencies such as Neuro2a or HEK293 cells are required. In HeLa cells, TDP25 was not able to be efficiently expressed.

2. Cell culture and transfection

2.1. Prepare a 100 mm plastic dish growing Neuro2a cells semi-confluently in normal growth medium.

NOTE: It is necessary to incubate at 37 °C for approximately 48–72 hours after the previous seeding until semi-confluency is reached.

2.2. Remove the medium.

2.3. Add 0.5 mL of trypsin-EDTA solution into the cell-culture dish and incubate them at 37 °C for 1 min.

2.4. Add 9.5 mL of normal growth medium into the dish and suspend the detached cells.

2.5. Using Trypan blue to stain the dead cells, count the number of cells using a cell counter or manually. Then dilute the cells in culture medium ($1.0 \times 10^5/\text{mL}$).

2.6. Add 2 mL of cell suspension into a 35 mm plastic dish for cell lysis or a glass base dish for live-cell measurement.

2.7. Incubate the dish at 37 °C for 1 day.

2.8. Start the following preparations 15 minutes before the day of the transfection.

2.9. Prepare two 1.5 mL tubes and add 100 µL of Opti-MEM I to each tube.

2.10. In the first tube, mix 1.0 µg of plasmid DNA (Solution A). In the second tube, mix 2.5 µL of Lipofectamine 2000 (Solution B).

NOTE: To maintain transfection efficiency, keep the total DNA amount the same. To reduce the expression level for FCS measurement in live cells, the fraction amount of plasmid DNA for protein expression should decrease (e.g., 0.2 µg of pmeGFP-N1-SOD1-G85R and 0.8 µg of pCAGGS mixture). Moreover, keep the same ratio between the volume of Lipofectamine 2000 and the amount of plasmid DNA.

2.11. Gently mix Solution A and B by adding one into either tube, and then incubate it for 1 min at room temperature (Solution C).

2.12. Add the Solution C to the culture medium; and incubate the cells for 24 h at 37 °C.

3. Cell lysis & medium exchange

3.1. Check the GFP expression using a routine microscope.

3.2. Remove the medium in the dish.

3.3. Add 2 mL of PBS at 25 °C to wash out the medium. Remove the PBS.

3.4. Place the dish on an aluminum plate on top of the crushed ice.

NOTE: We use a 1 mm thick aluminum plate cut in a Sunday tool store or commercially available one as laboratory equipment.

3.5. Add 200 µL of lysis buffer at 4 °C. Shake the dish mildly so that the buffer is evenly distributed at the bottom of the dish.

3.6. Scrape the dish using a cell scraper and recover the lysate with undissolved cell debris in a new 1.5 mL tube.

3.7. Centrifuge the solution at 20,400 x *g* for 5 minutes at 4 °C.

3.8. Recover the supernatant in a new 1.5 mL tube and keep it at 4 °C or on ice.

NOTE: Do not freeze the lysate.

3.9. For live cell measurements, replace the medium before the measurement. Check the cell attachment using a phase-contrast microscope. Confirm expression using a fluorescence microscope.

4. Fluorescence correlation spectroscopy (FCS) calibration

4.1. Start the system and run the operation software. Turn on the Argon⁺ laser (458/477/488/514 nm). Stabilize the system at least for 30 min.

4.2. Set up the optical path: Main beam splitter: HFT488; Dichroic mirror: NFT600; Fluorescence barrier filter: a bandpass filter 505-540 (BP505–540); Detector: avalanche photodiode (APD)).

4.3. Set the pinhole size by entering the value directly (66 µm; 1 airy unit).

4.4. Add the Rhodamine 6G (Rh6G) solution into a well of the cover glass chamber on the stage.

177 4.5. Add the immersion ultrapure water on the objective. Do not use the immersion oil.
178
179 4.6. Set the the chamber on the microscope stage. Move the stage to the appropriate position.
180
181 4.7. Focus on the upper glass surface by measuring the scattered light from the glass surface.
182 After lowering the objective lens to the bottom, turn the focus knob clockwise to adjust.
183
184 NOTE: Check the turning direction of the focus knob because it is opposite between those made
185 in Japan and Germany.
186
187 4.8. Raise the focal point 200 μm above the upper glass surface to observe the inside of the
188 solution.
189
190 4.9. Click the **Count rate** and monitor the photon counts rate.
191
192 4.10. Gradually increase the acousto-optic tunable filters (AOTF) value (e.g., excitation laser
193 transmission) so that the count rate value is more than 10 kHz.
194
195 4.11. Click the **Pinhole Adjustment** and open the pinhole adjustment wizard. Find the pinhole
196 position with the highest (a peak) number of photons in both the x- and y-axis.
197
198 4.12. Turn the correction ring of the objective lens so that the counts per molecule (CPM) value
199 is the highest.
200
201 NOTE: Since the thickness of the cover glass of the chamber specified here is 0.12–0.17 mm, the
202 correction ring is at around its minimum or just a few turns from it, where the CPM is at its
203 maximum.
204
205 4.13. Decrease the AOTF value gradually so that the CPM value becomes 2-3 kHz.
206
207 4.14. Acquire the autocorrelation function (ACF) of Rh6G for 90 s.
208
209 4.15. Once measurement is complete, click **Fit** to perform curve fitting analysis.
210
211 4.16. Select a model for one-component three-dimensional (3D) diffusion with a triplet state.
212
213 NOTE: The Rh6G is monodisperse and one-component diffuse with a triplet state.
214
215 4.17. Set the fitting start time by moving the red line. Click **Fit All** and check the fit deviation.
216 After performing the curve fitting, make sure the diffusion time (DT) and the structure parameter
217 (SP) are roughly in the range of 20–30 μs and 4–8, respectively.
218
219 4.18. Remember the structural parameter value. Use the SP value for curve fitting analysis of
220 all ACFs measured on the same day, under the same optical conditions, and using the same type

of glass base dish or chambered cover glass set on the microscope stage.

5. FCS measurement in cell lysate

5.1. Prepare the cell lysates (see above).

5.2. Place the lysate on the cover glass chamber. Place a lid to avoid drying and the stage lid for light shading.

5.3. Set the acquisition condition, laser power, measurement time, and repetitions.

5.4. Click **Count rate** and adjust the AOTF value of the laser so that the CPM value becomes more than 1 kHz.

5.5. Perform a trial measurement for 1 min. Check whether the calculated ACF shows a positive amplitude and smooth decay.

5.6. Perform the main measurement for 5 min.

NOTE: The total measurement time is gradually increased until the shape of the ACF does not change even if the measurement time is increased.

5.7. Click **Fit** to perform curve fitting analysis.

5.8. Select a model for two-component 3D diffusion with a triplet state. Remember to enter the SP value and change its setting to “Fixed” not “Free” before clicking **Fit all**.

5.9. Export the fitted table as a tab-delimited text file.

5.10. If necessary, export the ACF and Count rate record as a tab-delimited text file.

6. FCS measurement in live cells

6.1. Replace the medium with a fresh one before the measurement.

6.2. Use a heat stage incubator. Set the cell-culture dish on the microscope stage.

6.3. Confirm the focus and position using the confocal micrope. Select the measuring cell. Zoom in and adjust the cell position. Acquire fluorescence images of a GFP-expressing cell using the slow scanning speed mode.

6.4. Select an FCS-measuring position using **Position** in the “FCS” section.

6.5. Select at least one FCS measurement point using a crosshair (**Figure 1**).

265
266 6.6. Measure the ACF for 1 min.
267

268 NOTE: Because fluorescent proteins tend to be photobleached in live cells due to slow movement
269 compared to the solution, the measurement time should be minimum. It is generally difficult to
270 obtain ACF in the cell as smoothly as solution measurements because prolonged measurement
271 will lead to photobleaching of fluorescent proteins.
272

273 6.7. Click **Fit** to perform curve fitting analysis using a model for two-component 3D diffusion
274 with a triplet state.
275

276 NOTE: For live cell measurements, a model for two-component 3D diffusion with a triplet state
277 would be better because it is empirically difficult to decrease the chi-square value with a one-
278 component 3D diffusion model because of the existence of various mobile components in the
279 live cell. But even using a model for three-component 3D diffusion, the diffusion components are
280 usually not separated compared to using the model for two-components.
281

282 **REPRESENTATIVE RESULTS:**

283 We performed FCS measurement of GFP-TDP25 in cell lysate and SOD1-G85R-GFP in live cells. In
284 both cases, a positive amplitude and smooth ACFs were able to be acquired. We have shown that
285 a portion of GFP-TDP25 expressed in Neuro2a cells was recovered in the soluble fraction under
286 the indicated condition⁶. In the soluble fraction of the cell lysate, extremely bright fluorescence
287 molecules were detected in the photon count rate record using FCS (**Figure 2A**, top, arrow). Such
288 “spikes (also called burst)” were not observed in GFP monomers and monodisperse chemical
289 fluorescent dye solution, suggesting that the spikes indicate oligomeric proteins⁹. Curve fitting
290 analysis using a model assuming two-component 3D diffusion with a triplet state showed that
291 the fast diffusing molecules ($DT_{\text{Fast}} = 186 \mu\text{s}$) were ~90% and the remaining 10% was 2.3 ms
292 (**Figure 2A**, bottom; and **Table 2**).
293

294 During the SOD1-G85R-GFP measurement in live cells, the photon count rate record showed a
295 gradual decrease, suggesting its photobleaching in the detection volume (**Figure 2B**, top).
296 Although the contribution of the photobleaching was shown in a longer than 1 s range in the ACF,
297 a positive amplitude and smooth decay of the ACF were observed (**Figure 2B**, bottom). Curve
298 fitting analysis using a model assuming two-component 3D diffusion with a triplet state showed
299 that the fast diffusing molecules ($DT_{\text{Fast}} = 397 \mu\text{s}$) were ~93.4% and the remaining 6.6% was 12.3
300 ms (**Table 2**). ALS-linked mutation, G85R, in SOD1 did not allow a dramatic difference in diffusion
301 property compared to wild type. However, proteasome inhibition decreased the diffusion rate
302 only in the G85R mutant of SOD1 in the cytoplasm⁷.
303

304 **FIGURE AND TABLE LEGENDS:**

305 **Figure 1: Confocal fluorescent image of Neuro2a cells expressing SOD1-G85R-GFP.**

306 Confocal fluorescent image of Neuro2a cells expressing SOD1-G85R-GFP. The crosshair indicates
307 the FCS measurement position in the cytoplasm. Bar = 10 μm .
308

Figure 2: Typical FCS results and fitted curves for the autocorrelation functions

(A and B) Top: Recorded photon count rate in the FCS measurement time range (Green line). Bottom: Calculated autocorrelation functions (ACFs; Raw, grey lines) and fitted ACF curves using a model for two-component three-dimensional diffusion with a triplet state (Fit, magenta lines). $G(\tau)$ for Y-axis indicates the amplitude of ACFs at time τ sec. for X-axis. Dot lines show fitting start and end time points. Dark blue arrows show the spike with extremely bright proteins passing through the detection volume (i.e., soluble oligomers/aggregates).

Table 1: Solution compositions

Table 2: Typical fitted values for the autocorrelation functions

Fitted values for the autocorrelation functions are represented in Figure 2 using a model for two-component three-dimensional diffusion with a triplet state. Counts per molecule (CPM), fast and slow diffusion time (DT_{Fast} and DT_{Slow} , respectively), and their components (Fast and Slow component) are represented.

DISCUSSION:

Regarding system calibration before measurements, the same glasswares as the one used to measure the sample should be used (e.g., the 8-wells cover glass chamber for cell lysate and the 35-mm glass base dish for live cells). Because of the adsorption of Rh6G on the glass, its effective concentration may sometimes decrease. If so, a highly concentrated Rh6G solution such as 1 μ M should be used just for the pinhole adjustment. Extremely high photon count rates must be avoided to protect the detector (e.g., more than 1000 kHz). Moreover, the concentrated solution is not appropriate for the acquisition of autocorrelation function (maintain less than 100 kHz). The calibration of pinhole position is important. If the optical system is used frequently, it is rare for dramatical dislocation of the pinhole; thus, using “Fine” at the beginning is often no problem to find the appropriate position. If no peak position of the count rates using “Fine” is found, use the “Coarse” to move the pinhole from one end of the range of motion to the other before the position-finding using “Fine”. If the amplitude of the ACF was flat, check whether the focus and position are appropriate.

After the Rh6G measurement and its fitting, if the DT and/or SP is out of the indicated range, re-try the pinhole and correction ring adjustment. When still showing out of the range, we recommend contacting the manufacturer’s support as it is likely due to suspected defection of the optical system. Using the measured DT and SP in addition to the known diffusion coefficient of Rh6G (414 μ m²/s) in water, the effective beam waist can be calculated because DT is dependent on the beam waist¹⁰. Moreover, as the SP is the ratio of beam waist and the height of the effective detection volume, the detection volume can be calculated. The volume calculation is required to determine absolute concentration. More description of the principle and troubleshooting during the calibration is also available in protocols as reported previously¹¹⁻¹³.

Some spikes were observed in the FCS measurement of GFP-TDP25 in cell lysate (Figure 2A, top). We show that such spikes were observed in FCS measurement of aggregate-prone huntingtin including expanded polyglutamine repeats labeled with GFP or yellow fluorescent protein (YFP)

(HttQ78 and HttQ143)⁹; it thus suggests soluble oligomers/aggregates of GFP-TDP25 in the soluble fraction of the cell lysate. But such spike population was rare; thus, the ACF and its curve-fitting result may not include a major contribution of such spikes. A possible reason for only a small amount of aggregates being included in the soluble fraction is likely because TDP25 is highly aggregation-prone and its aggregates are fractionated in the insoluble fraction as shown using a fractionation of the cell lysate followed by western blotting detection⁶. The phenomena of the tendency to recover to the insoluble fraction of aggregation-prone protein have been often observed^{6,9}. Such soluble oligomers/aggregates cannot be easily detected using conventional biochemical methods such as SDS-PAGE followed by western blotting; thus, FCS has an advantage. However, to analyze multi-components using conventional FCS is difficult because it measures the average population. More developmental procedures combined with Bayesian nonparametric analysis would determine the multi-components in the sample without any assumptions for the components¹⁴.

The diffusion time in live cells was relatively slow compared to the cell lysate. Since viscosity in the cell is known to be higher than that in solutions such as PBS and detergent-containing buffer¹⁵, the diffusion time in live cells theoretically gets 2.5–3 times longer. Due to this slow diffusion in live cells comparing in solution, photobleaching of fluorescent tags can often be caused. To correct the photobleaching effect on ACFs, some procedures such as exponential decay assumption¹⁶ and noise filtering using wavelet function have been proposed¹⁷. Although such corrections are believed to be effective, it has still not been so simple for general users because it requires programming skills. Moreover, in live cell measurements, the fitting range should be determined more carefully so that the chi-square value of the fitted curve becomes small. As shown in **Figure 2B**, the range where $G(\tau)$ was less than 1 was excluded from the fitting range. Alternatively, more photostable fluorescent tags are required to analyze slowly diffusing/moving molecules. GFP is easy to use as a labeling tag, and its stability is well, but it is often photobleached during FCS measurements. To overcome this photostable property, HaloTag with tetramethylrhodamine (TMR) as a chemical fluorescent dye has been available¹⁸. However, incomplete labeling by the fluorescent ligands (e.g., TMR-ligand) and trapped dye pools are problematic issues for specific labeling of proteins of interest¹⁹; thus, exogenous expression of protein-of-interest tagged with fluorescent proteins would be the first choice for fluorescent labeling in live cells.

There are many kinds of fluorescent proteins, as well as chemical fluorescent dyes; however, as shown in this article, monomeric enhanced GFP (meGFP) is an easy-to-use tag for FCS as well as other fluorescence microscopy because its biochemical and fluorescence properties are well known. Therefore, in our studies, meGFP is the first choice and generally used to label the aggregation-prone proteins for FCS measurements^{6,7,9}.

ACKNOWLEDGMENTS:

A.K. was supported by a Japan Society for Promotion of Science (JSPS) Grant-in-Aid for Scientific Research (C) (#18K06201), by a grant-in-aid from the Nakatani Foundation for Countermeasures against novel coronavirus infections, by a grant from Hokkaido University Office for Developing Future Research Leaders (L-Station), and a grant-in-aid from Hoansha Foundation. M. K. was

partially supported by a JSPS Grant-in-Aid for Scientific Research on Innovative Areas “Chemistry for Multimolecular Crowding Biosystems” (#20H04686), and a JSPS Grant-in-Aid for Scientific Research on Innovative Areas “Information physics of living matters” (#20H05522).

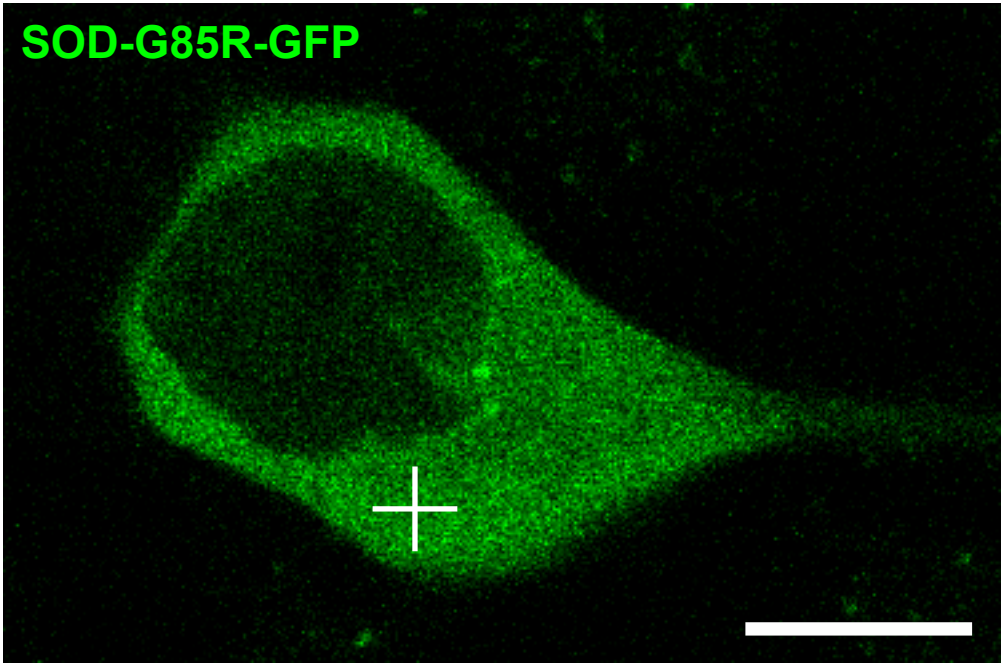
DISCLOSURES:

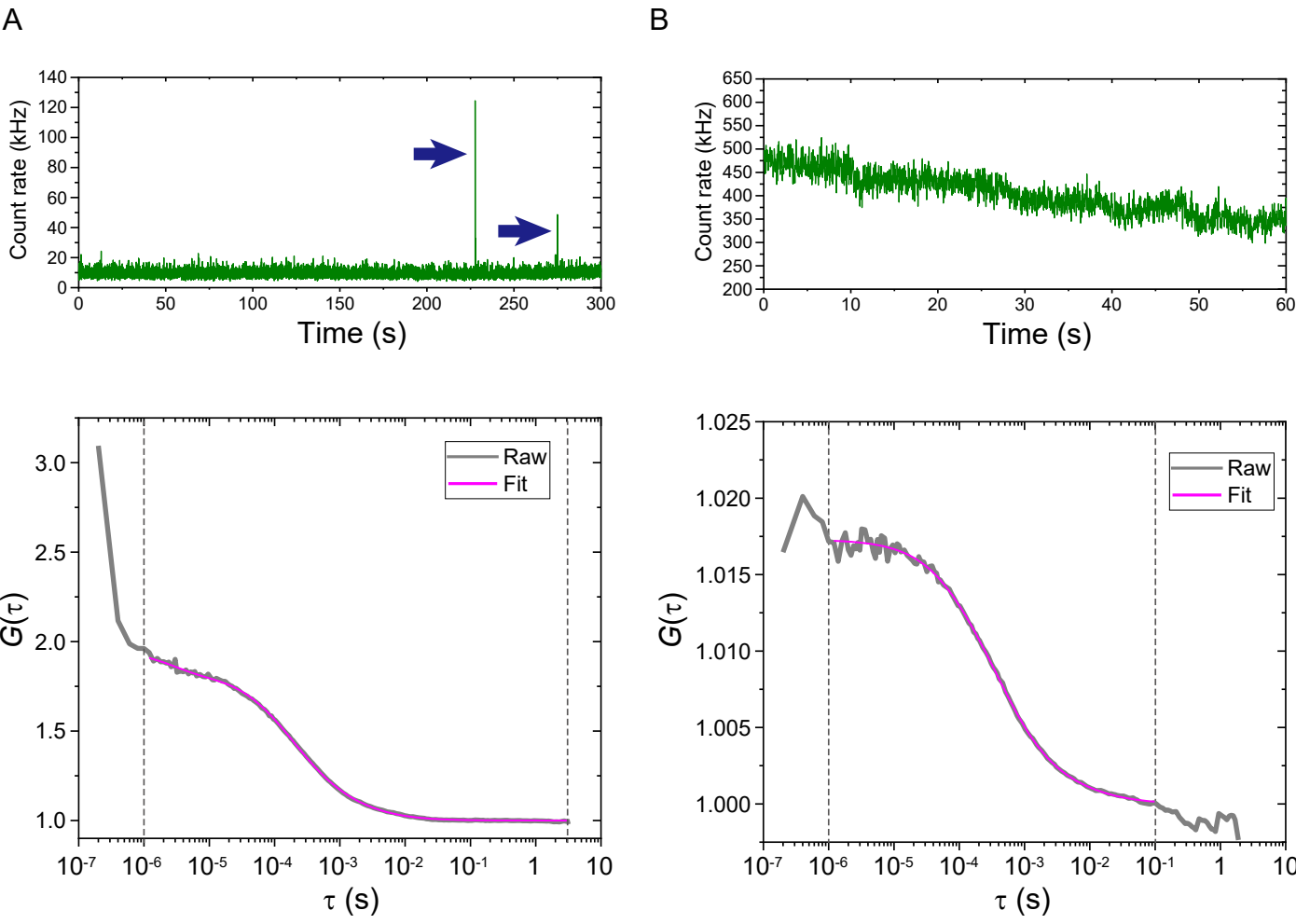
These authors have no conflicts of interest.

REFERENCES:

- 1 Ross, C. A., Poirier, M. A. Protein aggregation and neurodegenerative disease. *Nature Medicine*. **10 Suppl**, S10-17 (2004).
- 2 Hipp, M. S., Kasturi, P., Hartl, F. U. The proteostasis network and its decline in ageing. *Nature Review Molecular Cell Biology*. **20** (7), 421-435 (2019).
- 3 Kitamura, A., Nagata, K., Kinjo, M. Conformational analysis of misfolded protein aggregation by FRET and live-cell imaging techniques. *International Journal of Molecular Science*. **16** (3), 6076-6092 (2015).
- 4 Rigler, R., Mets, U., Widengren, J., Kask, P. Fluorescence Correlation Spectroscopy with High Count Rate and Low-Background - Analysis of Translational Diffusion. *European Biophysics Journal with Biophysics Letters*. **22** (3), 169-175 (1993).
- 5 Zacharias, D. A., Violin, J. D., Newton, A. C., Tsien, R. Y. Partitioning of lipid-modified monomeric GFPs into membrane microdomains of live cells. *Science*. **296** (5569), 913-916, (2002).
- 6 Kitamura, A. *et al.* Interaction of RNA with a C-terminal fragment of the amyotrophic lateral sclerosis-associated TDP43 reduces cytotoxicity. *Scientific Reports*. **6**, 19230, (2016).
- 7 Kitamura, A. *et al.* Dysregulation of the proteasome increases the toxicity of ALS-linked mutant SOD1. *Genes to Cells*. **19** (3), 209-224 (2014).
- 8 Niwa, H., Yamamura, K., Miyazaki, J. Efficient selection for high-expression transfectants with a novel eukaryotic vector. *Gene*. **108** (2), 193-199 (1991).
- 9 Kitamura, A. *et al.* Cytosolic chaperonin prevents polyglutamine toxicity with altering the aggregation state. *Nature Cell Biology*. **8** (10), 1163-1170 (2006).
- 10 Kitamura, A., Shibasaki, A., Takeda, K., Suno, R., Kinjo, M. Analysis of the substrate recognition state of TDP-43 to single-stranded DNA using fluorescence correlation spectroscopy. *Biochemistry and Biophysics Reports*. **14**, 58-63 (2018).
- 11 Kinjo, M., Sakata, H., Mikuni, S. First steps for fluorescence correlation spectroscopy of living cells. *Cold Spring Harbor Protocols*. **2011** (10), 1185-1189 (2011).
- 12 Kinjo, M., Sakata, H., Mikuni, S. Fluorescence correlation spectroscopy example: shift of autocorrelation curve. *Cold Spring Harbor Protocols*. **2011** (10), 1267-1269 (2011).
- 13 Kinjo, M., Sakata, H., Mikuni, S. Basic fluorescence correlation spectroscopy setup and measurement. *Cold Spring Harbor Protocols*. **2011** (10), 1262-1266 (2011).
- 14 Jazani, S. *et al.* An alternative framework for fluorescence correlation spectroscopy. *Nature Communication*. **10** (1), 3662 (2019).
- 15 Pack, C., Saito, K., Tamura, M., Kinjo, M. Microenvironment and effect of energy depletion in the nucleus analyzed by mobility of multiple oligomeric EGFPs. *Biophysical Journal*. **91** (10), 3921-3936 (2006).
- 16 Ries, J., Chiantia, S., Schwille, P. Accurate determination of membrane dynamics with line-scan FCS. *Biophysical Journal*. **96** (5), 1999-2008 (2009).

441 17 Fujioka, Y. *et al.* Phase separation organizes the site of autophagosome formation.
442 *Nature*. **578** (7794), 301-305 (2020).
443 18 Sadaie, W., Harada, Y., Matsuda, M., Aoki, K. Quantitative in vivo fluorescence cross-
444 correlation analyses highlight the importance of competitive effects in the regulation of protein-
445 protein interactions. *Molecular and Cellular Biology*. **34** (17), 3272-3290 (2014).
446 19 Cohen, L. D., Boulos, A., Ziv, N. E. A non-fluorescent HaloTag blocker for improved
447 measurement and visualization of protein synthesis in living cells. *F1000Research*. **9** (2020).
448





Name of Material/Equipment

- 0.1 μM Rhodamine 6G solution.
- 1 M HEPES-KOH pH 7.5
- 2 M Sodium chloride (NaCl)
- Lysis buffer
- Normal growth medium
- Phosphate buffer saline (PBS)

Components

50 mM HEPES-KOH pH 7.5, 150 mM NaCl, 1% Triton X-100, 1× protease inhibitor cocktail

DMEM supplemented with 10% FBS and 100 U/mL penicillin G and 100 µg/mL Streptomycin

137 mM NaCl, 2.7 mM KCl, 10 mM Na₂HPO₄, 1.8 mM KH₂PO₄

Comments/Description

Protease inhibitor cocktail should be mixed just before the cell lysis.

Lot check for FBS should be required.

Table

	CPM (kHz)	DT _{Fast} (μs)	Fast component (%)	DT _{Slow} (ms)	Slow component (%)
GFP-TDP25 in lysate	7.9	186	89.7	2.3	10.3
SOD1-G85R-GFP in live cell	6.3	397	93.4	12.3	6.6

Name of Material/Equipment	Company	Catalog Number	Comments/Description
0.25% (w/v) Trypsin-1 mmol/L EDTA·4Na Solution with Phenol Red (Trypsin-EDTA)	Fujifilm Wako Pure Chemical Corp.	201-16945	
100-mm plastic dishes	CORNING	430167	
35-mm glass base dish	IWAKI	3910-035	For live cell measurement
35-mm plastic dishes	Thermo Fisher Scientific	150460	
Aluminum plate	Bio-Bik	AB-TC1	
C-Apochromat 40x/1.2NA Korr. UV-VIS-IR M27	Carl Zeiss		Objective
Cell scraper	Sumitomo Bakelite Co., Ltd.	MS-93100	
Cellulose acetate filter membrane (0.22 μm)	Advantech Toyo	25CS020AS	
Cover glass chamber 8-wells	IWAKI	5232-008	For solution measurement
Dulbecco's Modified Eagle's Medium (DMEM)	Sigma-Aldrich	D5796	basal medium
Fetal bovine serum (FBS)	biosera		Lot check required
Lipofectamine 2000	Thermo Fisher Scientific	11668019	
LSM510 META + ConfoCor3	Carl Zeiss		FCS system
Murine neuroblastoma Neuro2a cells	ATCC	CCL-131	Cell line
Opti-MEM I	Thermo Fisher Scientific	31985070	
pCAGGS	RIKEN	RDB08938	Plasmid DNA for the transfection carrier

Penicillin-Streptomycin Solution (×100)	Fujifilm Wako Pure Chemical Corp.	168-23191	
pmeGFP-C1-TDP25			Plasmid DNA for TDP25 tagged with monomeric eGFP
pmeGFP-N1			Plasmid DNA for eGFP monomer expression
pmeGFP-N1-SOD1-G85R			Plasmid DNA for ALS- linked G85R mutant of SOD1 tagged with monomeric eGFP
Protease inhibitor cocktail	Sigma-Aldrich	P8304	

Dear Dr. Nam Nguyen,,
Manager of Review, JoVE

We resubmit our revised video. The video was uploaded in the dropbox as suggested.

Changes to be made by the Author(s) regarding the video:

1. Text and graphics

- *11:46 Consider adding a dedicated Results chapter title card labeled as VI, and changing the conclusion chapter numeral to VII.*

[Response] We modified the video as the editor suggested.
The file name: Kitamura_JoVE_movie_JoVE62576R2.mp4.

Akira Kitamura, Ph. D.
Laboratory of Molecular Cell Dynamics,
Faculty of Advanced Life Science,
Hokkaido University, Sapporo, Japan.
TEL: +81-11-706-9006
Mail: akita@sci.hokudai.ac.jp