

# Journal of Visualized Experiments

## Validation of a psychosocial intervention on body image in older people: An experimental design --Manuscript Draft--

<b>Article Type:</b>	Methods Article - JoVE Produced Video
<b>Manuscript Number:</b>	JoVE62506R2
<b>Full Title:</b>	Validation of a psychosocial intervention on body image in older people: An experimental design
<b>Corresponding Author:</b>	Roberto Sanchez-Cabrero Alfonso X el Sabio University Villanueva de la Cañada, Madrid SPAIN
<b>Corresponding Author's Institution:</b>	Alfonso X el Sabio University
<b>Corresponding Author E-Mail:</b>	robsan9@gmail.com
<b>Order of Authors:</b>	Roberto Sanchez-Cabrero Ana C. León-Mejía Amaya Arigita-García
<b>Additional Information:</b>	
<b>Question</b>	<b>Response</b>
Please indicate whether this article will be Standard Access or Open Access.	Standard Access (US\$2,400)
Please specify the section of the submitted manuscript.	Behavior
Please indicate the <b>city, state/province, and country</b> where this article will be <b>filmed</b> . Please do not use abbreviations.	Villanueva de la Cañada (Madrid, Spain)
Please confirm that you have read and agree to the terms and conditions of the author license agreement that applies below:	I agree to the <a href="#">Author License Agreement</a>
Please provide any comments to the journal here.	We recieve an invitation from Ronald Myers, Jaydev Upponi and Kyle Jewhurst
Please indicate whether this article will be Standard Access or Open Access.	Standard Access (\$1400)

**TITLE:**

Validation of a psychosocial intervention on body image in older people: An experimental design

**AUTHORS AND AFFILIATIONS:**

Roberto Sánchez-Cabrero<sup>1</sup>, Ana C. León-Mejía<sup>2</sup>, Amaya Arigita-García<sup>1</sup>

<sup>1</sup>Department of Social Sciences and Applied Languages, Alfonso X El Sabio University, Madrid, Spain

<sup>2</sup>Department of Psychology of Education and Psychobiology, International University of La Rioja (UNIR), Madrid, Spain

[rcabrero@uax.es](mailto:rcabrero@uax.es)

[aleon@unir.net](mailto:aleon@unir.net)

[aarigita@uax.es](mailto:aarigita@uax.es)

**KEYWORDS:**

Body image, body satisfaction, body perception, old age, older people, gender differences

**SUMMARY:**

This experimental intervention examines the body satisfaction of older people. The aim is to compare a specific intervention with another general program and determine which is more effective for improving body satisfaction in people over fifty years old.

**ABSTRACT:**

For most people, body satisfaction is crucial to develop both a positive self-concept and self-esteem, and therefore, it can influence mental health and well-being. This idea has been tested with younger people, but no studies explore whether body image interventions are useful when people age. This research validates a specific program designed for older people (IMAGINA Specific Body Image Program). This is done by employing a mixed experimental design, with between-subject and within-subject comparisons that focus on body satisfaction before and after experimental treatment, comparing two groups. Using this experimental methodology makes it possible to identify the effect of the intervention in a group of 176 people. The score obtained with the Body Shape Questionnaire (BSQ) was the dependent variable, and the IMAGINA program was the independent one. As for age, gender, relationship status, season, and residence environment, these were controlled variables. There were significant differences in body satisfaction between the two programs, obtaining better results with IMAGINA. The controlled variables had a much less significant effect than the treatment. Therefore, it is possible to improve body satisfaction in older adults through interventions similar to the one presented here.

**INTRODUCTION:**

In Western societies, looking good, healthy, and young is very important to feel right, fit in, interact with others, and be successful, becoming a core element of the self-concept and self-esteem. How satisfied one person is with her/his body depends on personal perception, specifically, with how s/he feels, perceives, imagines, and reacts to physical appearance and body functioning<sup>1,2</sup>. Following this definition, it is possible to identify two qualitatively different dimensions within this construct. On the one hand, there is the perceptive dimension, which depends on evaluating

the size, shape, and proportions of the body itself; on the other hand, there is the cognitive-emotional domain (i.e., 'body satisfaction'<sup>3</sup>), which is the subject of this research.

Essentially, body satisfaction is a person's degree of acceptance of his or her physical appearance<sup>4</sup>, which is bad if this assessment affects self-confidence negatively and positive when it increases personal confidence in interacting with others<sup>5,6</sup>. Traditionally, it has been considered that when a person ages and enters the last stage of life (taking age 50 as the cut-off point for middle age), body image concerns decrease substantially. In other words, it is believed that perceptual distortions about body image typical in adolescence and youth<sup>6-8</sup> are rare in older people<sup>9,10</sup>. The reason is that the focus of concern shifts from weight and fitness to other significant physical defects more associated with lack of health and physical decline.

In this line, the scientific literature has shown that the main concerns about the physical appearance of older people focus on the signs of aging, such as loss of fitness, wrinkling and aging skin, hair loss and grey hair, body odor, among others<sup>11,12</sup>. It has also been argued that the perception of these aging signs plays an evolutionary and adaptive role, since it allows people to become progressively aware of aging, thus helping to accept the transformation and deterioration of physical appearance. Although this may be right, it is no less true that aging awareness negatively influences body satisfaction. Not in vain, the widespread phenomenon of 'midlife crisis' refers to a tipping point in which the person starts to realize that s/he is aging and, in some cases, this comes along with experiencing depressive symptoms which, if not properly addressed, can interfere with personal wellbeing and mental health<sup>11,13</sup>.

The psychological and emotional implications derived from the senescence awareness have been studied<sup>14</sup>. In that sense, the deterioration of the physical appearance has been considered the most unmistakable sign that someone can experience regarding the arrival of senescence<sup>15</sup>. This is coupled with the feeling of playing an irrelevant and undervalued social role<sup>16</sup>. Therefore, self-identification as an 'older person' is irremediably linked to a gradual acceptance of new limitations and unfavorable circumstances. Thus, the older person begins to experience difficulties and emotional problems, such as anxiety, stress, or depression. Shortly, the person may self-identify with negative social roles while poorly accepting the physical limitations associated with aging<sup>17,18</sup>.

In different age groups, such as adolescents and youth, it is known that satisfaction and body image can improve with intervention programs<sup>1,19</sup>. Examples of this are the well-known interventions of Cash (1997)<sup>20</sup> and PICTA (Preventive program on body image and eating disorders in Spanish) by Maganto, del Río and Roiz (2002)<sup>21</sup>, as well as some more recent programs (Kilpela et al., 2016)<sup>22</sup>, Halliwell et al. (2016)<sup>23</sup>, McCabe et al. (2017)<sup>24</sup> or Bailey, Gammage and Van Ingen (2019)<sup>25</sup>. However, none of them target mature people and focus mainly on females, except for the intervention developed by Sánchez-Cabrero (2012)<sup>26</sup> called 'IMAGINA' that this study aims to validate. Let us suppose that a therapeutic intervention on body image can contribute to self-acceptance and develop a positive self in young people. There is no reason for not applying it and intervening in older people who face radical changes in their bodies<sup>27-29</sup>.

The experimental design is the most effective methodology for determining causal relationships and evaluating whether a therapeutic intervention produces improvements. First, it is necessary to

isolate the intervention effect from the rest of the intervening variables, something that in the social sciences is very costly and complex since the factors that can influence are almost innumerable. Second, it also requires a pre-post treatment comparison, comparisons between control and experimental groups, the randomization of the participants in the conditions of control and treatment, as well as the study of the most relevant intervening variables. Thus, this experiment follows two main objectives: (1) to analyze the improvement in body image satisfaction of persons over 50 years of age enrolling in a specific program of body satisfaction compared with the progress gained in a general program (non-specific); (2) to examine the relationship between body satisfaction and intervening variables such as age, gender, relationship status, time of year of participation, and living either in a metropolitan or countryside residence.

## **PROTOCOL:**

The Committee reviewed the Protocol on Scientific Conduct and Ethics of the Alfonso X el Sabio University. Also, a group of scientists external to the research team checked and approved the complete experimental process. To allowing participation in the study, it was necessary to sign an informed consent accepting to enroll in the program, as recommended by the Declaration of Helsinki<sup>30</sup>. Before enrollment, it was ensured that none of the participants would suffer any psychological stress or harm resulting from the intervention.

### **1. Carry out the field study**

NOTE: The experimental design follows a mixed design, with between-subject measurements (experimental and control groups) and repeated measurements before and after treatment. This experimental design makes it possible to isolate the effect of treatment (the results obtained in a specific body satisfaction program) from other variables related to the individual differences since body satisfaction was measured before and after treatment. The study also compares the treatment with what happened when participating in a non-specific intervention program (control group) isolating the manipulation effect during the intervention. Participants were randomly allocated in the experimental and control conditions, guarantying the optimal conditions for the experiment to be conducted.

#### **1.1. Selection of research tools**

1.1.1. Choose a psychosocial program aimed at improving body image in older people adequate to the goal of the study. In this case, the option chosen was IMAGINA program by Sánchez-Cabrero (2012)<sup>26</sup> as it meets all the requirements.

NOTE: The criterion to select the experimental instrument were the following: (1) it had to be a program specifically for body satisfaction; (2) it must be perfectly adapted to older people; (3) it must be a group-program emphasizing social interaction between participants; (4) it has to last 6 to 10 session of 60-120 minutes each, so attitudinal and behavioral changes could be achieved consistently.

1.1.2. Choose a general psychosocial program for older people to work in groups that meet all the required conditions and serve as a control comparison. In this experiment, the program is

‘Promoting Healthy Aging: Consistent Health’, run by the Spanish Red Cross<sup>31</sup> since it was the best option available.

NOTE: The criterion to select the control program are that (1) it must build upon positive social interaction without focusing on body image; (2) it must be designed for working in groups; (3) it must be appropriate for older people; (4) it must have a schedule similar to the experimental intervention program.

1.1.3. Choose a scientific instrument to evaluate body image satisfaction in older people. The Body Shape Questionnaire (BSQ) by Cooper, Taylor, Cooper, and Fairburn (1987)<sup>33</sup> was regarded as the most suitable instrument for the research goals.

NOTE: The criterion to select the scientific instrument to evaluate body satisfaction in old age were that (1) it must be a peer-reviewed and published instrument; (2) it measures body satisfaction and has convergent validity with other scientific instruments; (3) it must be short and simple to adapt to the older population (3) it must be translated to Spanish and scaled for the Spanish population.

1.1.4. Design a questionnaire (**Supplementary File 1**) to gather all demographic data and intervening variables to control in this study.

NOTE: The sociodemographic data regarding age, gender, and relationship status was gathered with an ad hoc specific questionnaire. Age was treated as a quantitative and discrete variable and the rest as dichotomous categorical variables. As for ‘season of the year’ and ‘residence environment’, this information was registered by the researcher in charge of the experiment.

## 1.2. Sampling method

1.2.1. Request the collaboration of a non-profit organization (NGO) that carries out psychosocial programs of group-application for older people in different locations.

1.2.2. Select ten different locations to apply the experimental and control psychosocial programs. Half of them lived in the countryside (places with less than 1000 residents), and the other half lived in metropolitan towns and cities.

## 1.3. Application of experimental and control interventions

1.3.1. Perform the pre-treatment measurement of BSQ. Individual measures were gathered with paper and pen, but the participants were in the same space as their cluster group.

1.3.2. Do over eight sessions of both psychosocial programs (control and experimental) in ten locations.

NOTE: The programs were under the same person's supervision at two different seasons of the year: summer and winter. In both cases, the activities were done in the evening, for 4 weeks, and twice a week. In both programs, participants worked in groups, having playful activities and social

gatherings, which drastically reduced participants' withdrawal.

### 1.3.3. Gather the post-treatment measurement of the BSQ.

NOTE: Individual applications were gathered with paper and pen, but the participants were in the same room with their cluster group. This was made right after finishing the sessions. The BSQ was not applied to those individuals who did not come to all sessions. Consequently, results from 10% of the sample were omitted in the final analyses.

## 2. Digitize the data obtained in the field study

2.1. Open the statistical software and go to **File Menu | New | Data**, click on the **Data** icon and then go to **Variable View (Figure 1)** and create a statistical variable for each one of the following variables shown in **Table 1**.

[Place **Table 1** here]

[Place **Figure 1** here]

2.2. Go to **Data View** in the statistical software (**Figure 2**), and, for each participant, fill in the data of the pre- and post-measures of the BSQ test. Do the same with the demographic and attributive data of the questionnaire.

NOTE: The results obtained with the BSQ and the information regarding the study's socio-demographic data were collected in paper and pen, so it was necessary to digitalize it one by one.

2.2.1. Create a new variable with the difference between the pre- and post- BSQ measurement in the statistical software (data obtained with the test). To do so, go to **Transform | Compute Variable**, and in the pop-up menu assign a number in **Target Variable** gap, then select the pre-treatment variable from the menu **Type & Label...** and move it to **Numeric Expression** gap, then click on the subtraction icon (-) on the calculator.

2.2.2. After, select the post-treatment variable from the **Type & Label menu** and move it again to **Numeric Expression** gap. Finally, click on the OK, and then the variable that accounts for the difference between pre- and post-measurement is created (**Figure 3**).

[Place **Figure 2** here]

[Place **Figure 3** here]

## 3. Statistical analyses

3.1. Look at the reliability and consistency of BSQ measurement and retest with the Intraclass Correlation Coefficient (ICC) with the statistical software package.

3.1.1. To this end, select the **Analyze Menu | Scale | Reliability Analysis**, move the pre and post-treatment BSQ measurements used in the experiment to the **Reliability Analysis** dialogue box.

3.1.2. Click on **Statistics...** and choose **Intraclass Correlation Coefficient** and the options **Two-Way Mixed** and **Consistency**. Finally, click on the **OK** icon to generate the desired output (**Figure 4**).

[Place **Figure 4** here]

NOTE: The pre and post-treatment BSQ measurements had excellent reliability and consistency values (ICC=0.916).

3.2. Run the descriptive analysis with the statistical software package. Start with descriptive statistics such as the arithmetic mean and the standard deviation (SD) for the quantitative variables 'BSQ pre-treatment', 'BSQ post-treatment', and 'Pre-post difference'. First globally, then taking into account each category of the other variables included in the study. Finally, study the frequency distribution in the categorical intervening and controlled variables.

3.2.1. To do this analysis, select **Analyze Menu | Descriptive Statistics | Frequencies** and, after the output, **analyze | Descriptive Statistics | Descriptive (Figure 5)**. To specify the descriptive statistics of the quantitative variables for each condition of the categorical variables, select the option **Split File** in the main menu, and in the pop-up menu choose the categorical variable to be analyzed and select the option '**Organize output by groups**'; then click on **OK (Figure 6)**.

3.2.2. Repeat this process for each categorical variable considered in the study (experimental condition, time of year, gender, marital status and residence).

[Place **Figure 5** here]

[Place **Figure 6** here]

3.3. Conduct a paired samples Student's t-test with the statistical software package to examine body image before and after participating in the two conditions (between-subject IV effect).

3.3.1. To this end, select **Analyze Menu | Compare Means | Paired samples t-Test**, and in the **Paired samples t-test** dialogue box, put BSQ pre-treatment and BSQ post-treatment as Variable 1 and 2 (**Figure 7**).

3.3.2. To specify the paired samples Student's t-test according to each categorical variable (experimental condition, gender, marital status, time of year and place of residence) select **Split File** option in the main menu, and in the pop-up menu choose the categorical variable to be analyzed and select the option '**Organize output by groups**' and click on **OK (Figure 6)**.

3.3.3. Repeat this process before each analysis for each nominal variable (time of year, gender, marital status and residence).

[Place **Figure 7** here]

3.4. Conduct One-Way ANOVA analysis with the statistical software package to see the effect of each program (intergroup IV effect), gender, relationship status, time of year, and place of residence.

3.4.1. To this end, select **Analyze Menu | Compare Means | One-Way ANOVA (Figure 8)**, and in the **One-Way ANOVA** dialogue box, put the variables BSQ pre-treatment, BSQ post-treatment and the pre-post difference in the **Dependent List** and the experimental condition variable as the **Factor**.

3.4.2. Repeat this process for each of the nominal variables (experimental condition, gender, relationship status, time of year and place of residence). The output shows the statistical significance of the BSQ pre-treatment, BSQ post-treatment and the pre-post difference as a discrete quantitative variable by comparing means with the Snedecor's F distribution (non-considering equality of variances).

[Place **Figure 8** here]

3.5. Conduct Repeated Measures ANOVA analysis with the statistical software package using the Pillai's Trace and Wilks' Lambda statistics, as they offer opposite and complementary results of the inter-intragroup effect of independent variables.

3.5.1. To this end, select **Analyze Menu | General Linear Model | Repeated Measures**, and in the **Repeated Measures** dialogue box, assign a name in the **Within-Subject Factor Name** box (e.g., PRE-POST), put '2' in the **Number of Levels** box and in the **Measure Name** box put BSQ. Finally, click on '**Define**' icon to switch to the variable selection box (**Figure 9**).

3.5.2. Within that pop-up menu, select the pre- and post-measures of the test BSQ as Within-Subjects Variables, the experimental condition as Between-Subjects Factor (s), and all the sociodemographic variables (time of year, gender, age, marital status and residence environment) as Covariates.

3.5.3. Before obtaining the analysis result, click on Model and select 'Full factorial'; then go to 'Options' and choose 'Estimates of effect size' (see **Figure 10**). Finally, repeat the whole process but instead of choosing 'Full factorial' in Model choose the option 'Build custom terms', combining the variable 'Condition' with all the sociodemographic variables (time of year, gender, age, marital status and residence environment) using for this purpose the icon 'By \*'.

[Place **Figure 9** here]

[Place **Figure 10** here]

## REPRESENTATIVE RESULTS:

The experimental research followed a mixed design, with between-subject measurements (experimental and control groups) and repeated measurements before and after treatment.

IMAGINA program by Sánchez-Cabrero (2012)<sup>26</sup> was selected as the experimental therapeutical program to increase body image satisfaction of older adults in Spain. It has eight group-sessions



of 90-120 minutes duration each, aiming at entertaining and engaging participants, using activities previously designed and tested, which are dynamic and requires active participation, teamwork, and individual reflection. Body image and self-esteem are expected to improve through social participation, communication, body image workshops, and healthy nutrition information. Emotional intelligence is also tackled, as the program activities foster positive relationships among participants while re-evaluating unrealistic and harmful self-expectations on physical appearance. Also, this program is specific for body image interventions and, consequently, it is the best option for testing to what extent it is useful. Finally, the pilot phase's satisfaction survey showed excellent acceptance (scoring 9 out of 10).

The 'Promoting Healthy Aging: Consistent Health' program for the older people<sup>31</sup>, run by the Spanish Red Cross, was selected as the control instrument. The 'Promoting Healthy Aging: Consistent Health' program has been applied for the last five years as a psychosocial instrument to promote health collectively with outstanding approval. Its time duration is the same as IMAGINA (8 sessions of 90-120 minutes), and it also has group enrollment. It fosters social contact without targeting body image issues. The program includes joyful group activities and healthy habits training based on the 'Exercise book and mental agility activities for the elderly' published by the Spanish Red Cross<sup>32</sup>.

This research took place in the North-West of Spain, which suffers severe aging population problems. Participant selection was done with cluster sampling, identifying ten groups of people over fifty years old. Half of them lived in the countryside (places with less than 1000 residents), and the other half lived in metropolitan towns and cities. A total of 176 people participated selflessly and with no economic reward. Participants were allocated to the control and experimental conditions (half in the general program and half in 'IMAGINA'), ensuring a similar distribution in both groups. And the same was done with the variables time of year and residence environment. The arithmetic mean of the sample's age was 64.03 with a standard deviation 64.03, with a standard deviation (SD) of  $\pm 8.06$ . Participants were 146 women (83%) and 30 men (17%), 93 over 65 years of age (retired according to the Spanish labor system), and 83 under 65 years of age (active population in terms of labor). There were 15 singles, 37 widows/widowers, 117 participants in a formal relationship, and only 7 separated or divorced. Regarding residence and the season of intervention, 63 live in countryside and 113 came from metropolitan areas, 84 were enrolled in the program during winter and 92 during summer. All of them were white (European-Caucasian) since this place of Spain is very homogeneous, racially speaking.

As Dependent Variable (VD) in the experimental research was selected the Body Shape Questionnaire (BSQ) by Cooper, Taylor, Cooper, and Fairburn (1987)<sup>33</sup>, translated and scaled to Spanish language and culture by Raich et al. (1996)<sup>34</sup>. The main characteristics are:

- The instrument consists of 34 items following a Likert scale (from 1 (never) to 6 (always)).
- It has proven to be a reliable scientific tool by several studies that used it, and has a Cronbach's  $\alpha$  between 0.95 and 0.97.
- It has good external validity with other similar scientific instruments, such as the body dissatisfaction subscale of the EDI<sup>35</sup> (Eating Disorders Inventory) or the MBSRQ<sup>36</sup> (Multidimensional Body Self-Relations Questionnaire).
- Final score between 34 and 204.
- Scoring above 110 indicates discontent with body image (Cooper et al., 1987)<sup>33</sup>.

BSQ was the chosen scientific tool because it is one of the most used instruments in this scientific field<sup>37,6</sup>. Also, it has been adapted to other languages and cultures on multiple occasions, for example, Brazil<sup>38</sup>, Colombia<sup>39</sup>, Norway<sup>40</sup>, and Korea<sup>41</sup>, among others. Its psychometric attributes are excellent, and it has been scaled to Spanish language and culture. From a lexical perspective, the BSQ is simple and brief enough to use with older people, avoiding tiredness when responding to it; even people with low literacy skills find it easy to respond. Since the BSQ has been widely used, it is possible to compare this research with other studies conducted with younger participants, allowing us to examine body dissatisfaction across different stages and moments of life. The last motivation for using BSQ is that no other body satisfaction tool for older people has been scientifically validated. Thus, creating a new scientific instrument would cause significant reliability problems, making it impossible to compare this research with previous literature.

The results obtained make it possible to examine the experimental condition's effect: the benefits of participating in a body image program for older people. This is done by examining differences with the control condition and intrasubject variability (pre-treatment measured).

Regarding the first research goal, **Table 2** shows the effect size in the experimental and control groups before and after participants took place in them (Cohen's d), and the difference between these two moments with a Paired Samples Test.

[Place **Table 2** here]

The output of the paired samples test (between-subject effect) shows that the improvement is higher in the IMAGINA body image program than in the general (M=6.75 versus M=.75), and this is statistically significant ( $t = 6.782$ ,  $p = .000$ ). The improvement is not significant in the control condition ( $t = .883$ ,  $p = .380$ ), showing a remarkable result of the IMAGINA body image program compared with the NGO program (Cohen's  $d = .721$  versus  $.094$ ). The results obtained allow us to identify the effect of both conditions (experimental and control) and differences between them. More specifically, a multivariate analysis will be performed to see whether the effect of IMAGINA was higher than the control program.

**Table 3** shows a One-Way ANOVA (intergroup effect), which compares BSQ in the experimental and control condition at each moment (pre- and post-treatment) as well as between the two moments (pre-post difference). These results show that the between-subject design is robust, since both pre ( $F = .56$ ,  $p = .455$ ) and post-condition ( $F = .443$ ,  $p = .506$ ) show non-significant mean differences between both conditions. On the contrary, there is a significant improvement in BSQ in the pre-post difference ( $F = 12.734$ ,  $p = .000$ ), which indicates good performance of the BSQ test, supporting what had been observed in the previous analyses.

[Place **Table 3** here]

Finally, this paper concludes with the global results obtained in the experimental and control conditions. **Table 4** shows the output of the Repeated measurements ANOVA (inter-intra group effect), pointing to the effectiveness of the IMAGINA body satisfaction program (experimental condition) over the non-specific one (control condition). Examining a moderation effect in the

results of ‘Condition variable’ (by adding gender, age, marital status, season of year, and residence environment as covariable) makes it possible to see that the multivariate contrasts of inter-intra group interaction effect are statistically significant ( $p = .000$ ).

[Place **Table 4** here]

Concerning the second objective of this study, i.e., the role that intervening variables played in body satisfaction differences, **Table 5** shows the arithmetic mean and SD of BSQ in both conditions and moments of measurement by gender, marital status, season of year, and environment of residence, as well as the size effect (Cohen’s  $d$ ), between these two moments of measurement and the resultant Paired Samples test.

[Place **Table 5** here]

Men were more satisfied with their physical appearance than women, which is more evident after taking part in the experimental condition with the specific body image program (Post-test). Indeed, the difference between the measure of the BSQ before and immediately after the intervention is statistically significant for both genders just in the experimental condition after taking part in IMAGINA program (Women:  $t = 5.756$ ,  $p = .000$ ; Men:  $t = 4.646$ ,  $p = .000$ ).

Regarding the relationship status, participants within a relationship are more unhappy with their physical appearance in the pre- and post- treatment condition. This happens both in the control and experimental groups, indicating that lacking partner is positively related to body image satisfaction; however, this also improves their body satisfaction more significantly during their participation in IMAGINA ( $M = 6.76$  versus  $M = 5.09$ ). These results are significant for participants with or without relationships in the experimental condition.

The season of year of the program did not affect significantly individuals in the control group, but it affected those in the experimental group (IMAGINA program). IMAGINA program got higher scores in winter than in summer ( $M = 9.44$  and  $M = 4.40$ , respectively), although the improvement was significant in both times of the year ( $p = .003$  and  $p = .000$ , respectively).

Finally, regarding the residence environment, the improvement was higher for metropolitan individuals ( $M = 8.35$ ) than in countryside individuals ( $M = 4.21$ ) in the experimental condition. The size of the effect is significant in the experimental group but not in the control one, as it happens with the rest of the sociodemographic variables. Again, none of the groups of the control condition obtained significant results.

As can be seen, gender, season of year, and residence environment have less effect on body satisfaction in control groups than in the IMAGINA program groups (experimental condition), as shown by Cohen’s  $d$ . More specifically, looking at the intergroup (IV) effect in **Table 6**, it is possible to see how the output obtained in the One-Way ANOVA show that most of the significant differences are in the pre-post differences. Besides, the pre-post difference has more effect size (Eta Squared) than the pre- and post-measures alone.

[Place **Table 6** here]

Finally, **Table 7** shows the multivariate analyses with repeated measures (between-intragroup effect) that show that age, gender, having a stable partner, season of year, and environment of residence do not interfere with the effectiveness of the treatment (IMAGINA program) as the effect is non-significant.

[Place **Table 7** here]

Results displayed in **Tables 5-7** show that applying a between-subject design in the IMAGINA intervention was indeed effective and played a more powerful role than the rest of the controlled intervening variables, which have been traditionally considered of great relevance on body image in previous studies on this subject.

#### **FIGURE AND TABLE LEGENDS:**

**Figure 1: How to import variables data to the statistical software package.** (1) Click on the **Data** icon; (2) Click on **Variable View** icon.

**Figure 2: How to import research data to the statistical software package.** Select **Data View** icon.

**Figure 3: How to create a new variable with the difference between the pre- and post-measurement of the BSQ test in the statistical software.** (1) Click on **Transform | Compute Variable**; (2) Assign a number in **Target Variable** gap; (3) Select the pre-treatment variable from the menu **Type & Label...** and move it to **Numeric Expression** gap; (4) Click on the **Subtraction** icon (-) on the calculator; (5) Select the post-treatment variable from the **Type & Label** menu and move it to **Numeric Expression** gap; (6) click on the **OK** icon.

**Figure 4: How to assess the internal consistency of the questionnaire.** Select **Analyze Menu | Scale | Reliability Analysis**. (1) Move the variables used in the experiment to the **Reliability Analysis** dialogue box; (2) Click on the **OK** icon.

**Figure 5: How to carry out the descriptive analysis of the data.** Select **Analyze Menu | Descriptive Statistics | Frequencies** and, after the output, **Analyze | Descriptive Statistics | Descriptive**.

**Figure 6: How to specify the descriptive statistics of the quantitative variables for each condition of the controlled nominal intervening variables.** (1) Click on **Split File** icon; (2) Choose the categorical variable to be analyzed and select the option **Organize output by groups**; (3) Click on the **OK** icon.

**Figure 7: How to conduct Paired samples Student t-Test analysis.** (1) Select **Analyze Menu | Compare Means | Paired samples t-Test**; (2) put BSQ pre-treatment and BSQ post-treatment as Variable 1 and 2; (3) Click on the **OK** icon.

**Figure 8: How to conduct One-Way ANOVA analysis.** (1) Select **Analyze Menu | Compare Means | One-Way ANOVA**; (2) put the variables BSQ pre-treatment, BSQ post-treatment and

the pre-post difference in the **Dependent List**, and the experimental condition variable as the **Factor**; (3) Click on the **OK** icon.

**Figure 9: How to configure Repeated Measures ANOVA analysis.** (1) Select **Analyze Menu | General Linear Model | Repeated Measures**; (2) Assign a name in the **Within-Subject Factor Name** box; (3) Put '2' in the **Number of Levels** box and click on **Add** icon; (4) Put BSQ in the **Measure Name** box and click on **Add** icon; (5) Click on the **Define** icon.

**Figure 10: How to select variables to conduct Repeated Measures ANOVA analysis.** Select the pre- and post-measures of the test BSQ as Within-Subjects Variables and the experimental condition as Between-Subjects Factor (s).

**Table 1: Main characteristics of the research statistical variables.** Detailed description of the main characteristics of the research variables in their digitization process.

**Table 2: Means and standard deviations of the BSQ test in both conditions and moments (pre, post) and pre-post-test difference (paired samples test).** Abbreviations, M = Mean; SD = Standard Deviation; p = probability value or significance. This table has been modified from Sánchez-Cabrero et al.<sup>2</sup>.

**Table 3: BSQ differences in both moments (One-way ANOVA).** Abbreviations, F = Snedecor's F; p = probability value or significance. This table has been modified from Sánchez-Cabrero et al.<sup>2</sup>.

**Table 4: Multivariate Test.** Abbreviations, F = Snedecor's F; p = probability value or significance; Hyp. DF = Hypothesis Degrees of Freedom; Error DF = Error Degrees of Freedom; MS = Mean Square. This table has been modified from Sánchez-Cabrero et al.<sup>2</sup>.

**Table 5: Age, gender, marital status, time of year, and environment of residence differences (paired samples test).** Abbreviations, M = Mean; SD = Standard Deviation; p = probability value or significance. This table has been modified from Sánchez-Cabrero et al.<sup>2</sup>.

**Table 6: BSQ inter analysis by age, gender, marital status, time of year, and environment of residence across conditions (One-way ANOVA).** Abbreviations, F = Snedecor's F; p = probability value or significance. This table has been modified from Sánchez-Cabrero et al.<sup>2</sup>.

**Table 7: Multivariate contrasts of age, gender, marital status, time of year and environment of residence (inter and intra analyses).** Abbreviations, F = Snedecor's F; p = probability value or significance; Hyp. DF = Hypothesis Degrees of Freedom; Error DF = Error Degrees of Freedom; MS = Mean Square. This table has been modified from Sánchez-Cabrero et al.<sup>2</sup>.

## **DISCUSSION:**

This experimental work supports the positive consequences of participating in a body satisfaction program in older people by examining satisfaction values before and after the intervention and comparing experimental and non-experimental groups. Also, the control of other intervening variables improves the reliability and validity of the results obtained.

The most critical step of the protocol was the selection of the program applied in the control group. It was necessary to replicate the same experimental conditions to isolate the effect generated by the IMAGINA program<sup>26</sup>. The results show no differences between both conditions in the duration of treatment, in the social interaction and entertainment levels. Therefore, it is likely that body satisfaction differences between both conditions are due to the specific benefits of IMAGINA. To make this comparison, it was crucial to have a reliable tool, the BSQ by Cooper, Taylor, Cooper and Fairburn (1987)<sup>32</sup>, which was scaled to Spanish participants by Raich et al. (1996)<sup>33</sup>. It is a quick, simple, and standardized test for the Spanish population that has provided us with clear and meaningful results. Despite its advantages, one main shortcoming of using the BSQ is that it was not meant for the older population. However, up to date, there are no instruments aimed at this particular age group, so it was the best option for this study. Another relevant limitation of this research is the lack of body image programs for mature and old age, which narrowed the options to just one alternative. In this sense, IMAGINA has proven to be very useful in light of the effects obtained. The data indicate that those enrolled in the IMAGINA body image program increased their body image satisfaction and acceptance, whereas those who enrolled in a non-specific program did not experience any remarkable progress. These differences between the two groups (improvement of 6.75 points in the experimental condition vs. 0.75 in the control condition,  $p = .000$ ) reinforce the message that self-image satisfaction can be developed that has been posited by body image theorists<sup>42,43</sup>. These results are also consistent with other studies that pointed out that tailored programs are much better than general interventions<sup>22,24,25,28,44,45</sup>. Finally, it has been proven to a reasonable extent that the IMAGINA program by Sanchez-Cabrero (2012)<sup>26</sup> is effective for older participants.

These results have major implications for clinical and scientific research, since they indicate that intervention on body image at all ages are effective and brings positive outcomes. Contrary to what was traditionally believed, they show that physical appearance still matters in the last phases of life. For this reason, body image interventions with older people may complement other medical or psychological actions addressing depression or moods-problems. However, more scientific information on body image satisfaction in old age is needed, particularly about shortcomings as well as about and positive effects on mood and social interaction. Therefore, to make more sounded claims, it would be necessary to continue investigating the potential benefits of body satisfaction programs for older people, both preventive and palliative.

In western societies, physical appearance has become a matter of great importance for people. This is partly due to the role of the Internet, TV, magazines, and other media, making people always compare themselves with the 'ideals or standards of beauty'<sup>46,47</sup>. This is even a reality for older people who, in theory, are not the target<sup>1,44,48,49</sup>. Despite its social and health importance, body image satisfaction has not benefitted from the same scholarly attention as other issues, at least in Spain, where there are no similar studies. Consequently, comparisons are hard to do. However, the BSQ scores of participants were akin to those previously reported. For instance, female participants scored 71.9 and 72.3 (experimental and control group, respectively), which is lower but similar to the 84.7 of Cooper et al. (1987)<sup>32</sup> and the 84.75 of Raich et al. (1996)<sup>33</sup>. Baile et al. (2002) research<sup>37</sup> with more than 500 teenagers found 81.2 in females of 15-16 years old, and 79.49 for females of 17-19 years. Recently, Conti et al. (2009)<sup>38</sup> reported a value of 73.9 in Brazilian adolescents, 88.3 for girls and 57.1 for boys, pointing to a gender gap. Finally, a

Fernández-Bustos et al. (2015)<sup>6</sup> study with more than 500 female teenagers and pre-teenagers also reported similar scores. Nevertheless, no specific mean and SD values were provided. A comparison between their scores and the ones obtained here with a sample over fifty years old (M=70.54; SD=23.44.) shows that the range that includes 68% of the results (i.e., the area around one standard deviation over the arithmetic mean) overlaps in more than 60% of the cases, allowing us to conclude that people over fifty years old have similar body dissatisfaction levels as teenagers and young adults.

As seen, older people are concerned with their image and with being far from beauty and health social standards. This is true for both genders, although it is experienced differently by men and women, and it depends on social variables like being or not in a formal relationship. Getting older means accepting ourselves in a society that applauds youth, beauty, and rejects the contrary. For this reason, more research should guide actions and interventions with at-risk groups (i.e., children and older people) that are not the main subjects of advertising and marketing content but are affected by them.

#### ACKNOWLEDGMENTS:

All contributing authors wish to express their gratitude to the Spanish Red Cross, because without its support we could not have done this research. Also, we appreciate a lot of the feedback and help from the Committee on Scientific Conduct and Ethics of the Alfonso X el Sabio University.

#### DISCLOSURES:

The authors have nothing to disclose.

#### REFERENCES:

1. Cash, T. F. Body Image: A joyous journey. *Body Image*. **23**, A1–A2 (2017).
2. Sánchez-Cabrero R., León-Mejía A.C., Arigita-García A., Maganto-Mateo C. Improvement of Body Satisfaction in Older People: An Experimental Study. *Frontiers in Psychology*. **10** (2823) (2019).
3. Maganto, C., Garaigordobil, M., Kortabarria, L. Eating Problems in Adolescents and Youths: Explanatory Variables. *The Spanish Journal of Psychology*. **19**, E81 (2016).
4. McGuire, J. K., Doty, J. L., Catalpa, J. M., Ola, C. Body image in transgender young people: Findings from a qualitative, community based study. *Body Image*. **18**, 96-107 (2016).
5. Tylka, T. L., Wood-Barcalow, N. L. What is and what is not positive body image? Conceptual foundations and construct definition. *Body Image*. **14**, 118–129 (2015).
6. Fernández-Bustos, J.-G., González-Martí, I., Contreras, O., Cuevas, R. Relación entre imagen corporal y autoconcepto físico en mujeres adolescentes. *Revista Latinoamericana de Psicología*. **47** (1), 25–33 (2015).
7. Grogan, S. Body image: Understanding body dissatisfaction in men, women and children. London: Routledge (2016).
8. Kvaalem, I. L., Træen, B., Markovic, A., von Soest, T. Body image development and sexual satisfaction: A prospective study from adolescence to adulthood. *The Journal of Sex Research*. **56** (6), 791-801 (2019).
9. Jankowski, G. S., Diedrichs, P. C., Williamson, H., Christopher, G., Harcourt, D. Looking age-appropriate while growing old gracefully: A qualitative study of ageing and body image among older adults. *Journal of Health Psychology*. **21** (4), 550-561 (2016).

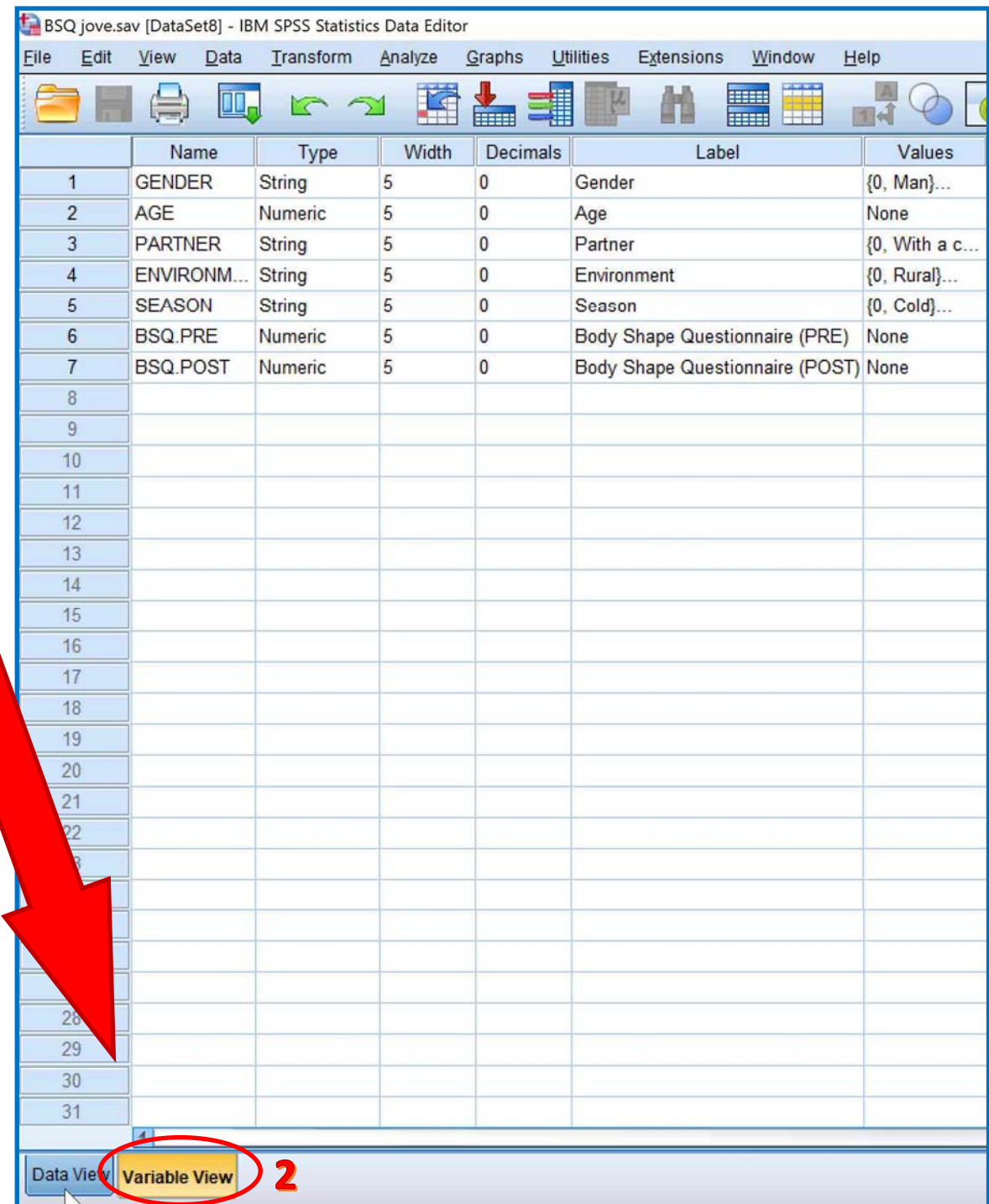
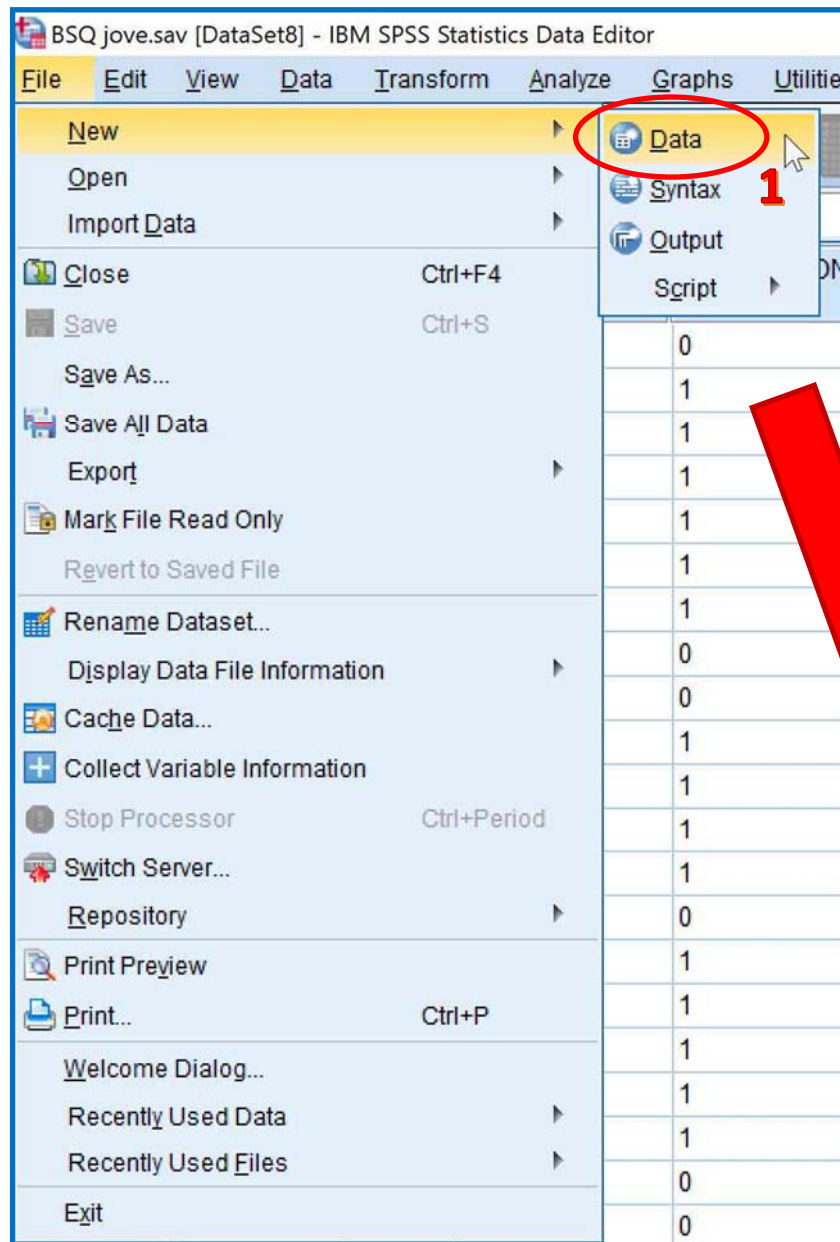
10. Sabik, N., Versey, H. S. Functional limitations, body perceptions, and health outcomes among older African American women. *Cultural Diversity and Ethnic Minority Psychology*. **22** (4), 94–601 (2016).
11. Gubrium, J. F., Holstein, J. A. The Life Course. In Handbook of symbolic interactionism. (835–855). Walnut Creek, CA, US: AltaMira Press (2006).
12. Longo, M. R. Implicit and explicit body representations. *European Psychologist*. **10** (1), 6–15 (2015).
13. Chang, H. K. Influencing factors on mid-life crisis. *Korean Journal of Adult Nursing*. **30** (1), 98-105 (2018).
14. Sánchez-Cabrero, R., Carranza-Herrezuelo, N., Novillo-López, M.A. and Pericacho-Gómez, F.J. The Importance of Physical Appearance during the Ageing Process in Spain. Interrelation between Body and Life Satisfaction during Maturity and the Old Age. *Activities, Adaptation & Aging*. **44** (3), 210-224 (2020).
15. Schoufour, J. D., et al. Socio-economic indicators and diet quality in an older population. *Maturitas*. **107**, 71-77 (2018).
16. Kihlstrom, J. F. What does the self-look like? En T. K. Srull & R. S. Wyer, Jr. (Eds.), The mental representation of trait and autobiographical knowledge about the self. (87-98). Nueva York: Psychology Press (2015).
17. Bratt, C., Abrams, D., Swift, H. J., Vauclair, C. M., Marques, S. Perceived age discrimination across age in Europe: From an ageing society to a society for all ages. *Developmental Psychology*. **54** (1), 167-180 (2018).
18. Sanchez-Cabrero, R. Mejora de la satisfacción corporal en la madurez a través de un programa específico de imagen corporal. *Universitas Psychologica*. **19** (1), 1-15 (2020).
19. Voelker, D. K., Reel, J. J., Greenleaf, C. Weight status and body image perceptions in adolescents: Current perspectives. *Adolescent Health, Medicine and Therapeutics*. **6**, 149-158 (2015).
20. Cash, T. F. The body image workbook: An 8-step program for learning to like your looks. Oakland, CA: New Harbinger Publications, Inc (1997).
21. Maganto, C., Del Río, A., Roiz, O. Programa preventivo sobre Imagen corporal y Trastornos de la Alimentación (PICTA). Madrid: TEA Ediciones (2002).
22. Kilpela, L. S., Blomquist, K., Verzijl, C., Wilfred, S., Beyl, R., Becker, C. B. The body project 4 all: A pilot randomized controlled trial of a mixed- gender dissonance- based body image program. *International Journal of Eating Disorders*. **49** (6), 591-602 (2016).
23. Halliwell, E., et al. Body image in primary schools: A pilot evaluation of a primary school intervention program designed by teachers to improve children's body satisfaction. *Body Image*. **19**, 133-141 (2016).
24. McCabe, M. P., Connaughton, C., Tatangelo, G., Mellor, D., Busija, L. Healthy me: A gender-specific program to address body image concerns and risk factors among preadolescents. *Body Image*. **20**, 20-30 (2017).
25. Bailey, K. A., Gammage, K. L., van Ingen, C. Designing and implementing a positive body image program: Uncharted territory with a diverse team of participants. *Action Research*. **17** (2), 146-161 (2019).
26. Sánchez-Cabrero, R. IMAGINA: programa de mejora de la autoestima y la imagen corporal para adultos. *Logroño, Spain: Sinindice* (2012).



27. Kozar, J. M. Relationship of attitudes toward advertising images and self-perceptions of older women. *Dissertation Abstracts International Section A: Humanities and Social Sciences*. **65** (8-A), 3116 (2005).
28. Hudson, N. W., Lucas, R. E., Donnellan, M. B. Getting older, feeling less? A cross-sectional and longitudinal investigation of developmental patterns in experiential well-being. *Psychology and Aging*. **31** (8), 847-861 (2016).
29. Mangweth- Matzek, B., et al. Never too old for eating disorders or body dissatisfaction: A community study of elderly women. *International Journal of Eating Disorders*. **39** (7), 583-586 (2006).
30. World Medical Association. WMA declaration of Helsinki: Ethical principles for medical research involving human subjects (2013).
31. Spanish Red Cross. Promoting Healthy Aging: Consistent Health. Madrid: Spanish Red Cross (2017).
32. Spanish Red Cross. Exercise book and mental agility activities for the elderly. Zaragoza: Spanish Red Cross (2013).
33. Cooper, P. J., Taylor, M. J., Cooper, Z., Fairburn, C. G. The development and validation of the Body Shape Questionnaire. *International Journal of Eating Disorders*. US: John Wiley and Sons (1987).
34. Raich, R. M., et al. Adaptación de un instrumento de evaluación de la insatisfacción corporal (BSQ). *Clínica y Salud*. **8**, 51-66 (1996).
35. Garner, D. M., Olmstead, M. P., Polivy, J. Development and validation of a multidimensional eating disorder inventory for anorexia nervosa and bulimia. *International Journal of Eating Disorders*. **2** (2), 15-34 (1983).
36. Cash, T. F. Multidimensional Body-Self Relations Questionnaire (MBSRQ). In *Encyclopedia of Feeding and Eating Disorders*. 1-4 Springer Singapore (2015).
37. Baile, J. I., Guillén, F., Garrido, E. Insatisfacción corporal en adolescentes medida con el Body Shape Questionnaire (BSQ): Efecto del anonimato, el sexo y la edad. *Revista Internacional de Psicología Clínica y de La Salud*. **2** (3), 439-450 (2002).
38. Conti, M. A., Cordás, T. A., Latorre, M. R. D. O. A study of the validity and reliability of the Brazilian version of the Body Shape Questionnaire (BSQ) among adolescents. *Revista Brasileira de Saúde Materno Infantil*. **9** (3), 331-338 (2009).
39. Moreno, D. C., Montaña, I. L., Prieto, G. A., Pérez-Acosta, A. M. Validación del Body Shape Questionnaire (Cuestionario de la Figura Corporal) BSQ para la población colombiana. *Acta Colombiana de Psicología*. **10** (1), 15-23 (2015).
40. Kapstad, H., Nelson, M., Øverås, M., Rø, Ø. Validation of the Norwegian short version of the Body Shape Questionnaire (BSQ-14). *Nordic Journal of Psychiatry*. **69** (7), 509-514 (2015).
41. Kim, T. S., Chee, I. S. The reliability and validity of the Korean version of the Body Shape Questionnaire. *Anxiety Mood*. **14** (1), 36 (2018).
42. Homan, K. J., Tylka, T. L. Development and exploration of the gratitude model of body appreciation in women. *Body Image*. **25**, 14-22 (2018).
43. Tylka, T. L., and Homan, K. J. Exercise motives and positive body image in physically active college women and men: Exploring an expanded acceptance model of intuitive eating. *Body Image*. **15**, 90-97 (2015).
44. Mellor, D., Connaughton, C., McCabe, M. P., Tatangelo, G. Better with age: A health promotion program for men at midlife. *Psychology of Men and Masculinity*. **18** (1), 40-49 (2017).

- 732 45. Roses-Gómez, M. R. Desarrollo y evaluación de la eficacia de dos programas preventivos  
733 en comportamientos no saludables respecto al peso y la alimentación: Estudio piloto (Doctoral  
734 Thesis). Universidad Autónoma de Barcelona: Barcelona (2014).
- 735 46. Fardouly, J., Diedrichs, P. C., Vartanian, L. R., Halliwell, E. The Mediating Role of  
736 Appearance Comparisons in the Relationship Between Media Usage and Self-Objectification in  
737 Young Women. *Psychology of Women Quarterly*. **39** (4), 447–457 (2015).
- 738 47. Ridgway, J. L., Clayton, R. B. Instagram unfiltered: Exploring associations of body image  
739 satisfaction, Instagram# selfie posting, and negative romantic relationship outcomes.  
740 *Cyberpsychology, Behavior, and Social Networking*. **19** (1), 2-7 (2016).
- 741 48. Raich, R. M. Una perspectiva desde la psicología de la salud de la imagen corporal.  
742 *Avances En Psicología Latinoamericana*. **22** (1), 15-27 (2004).
- 743 49. Thompson, J. K. (Ed.). *Handbook of eating disorders and obesity*. Hoboken, NJ, US: John  
744 Wiley and Sons Inc (2004).

Figure 1



BSQ jove.sav [DataSet8] - IBM SPSS Statistics Data Editor

File Edit View Data Transform Analyze Graphs Utilities Extensions Window Help

18 :

	GENDER	AGE	PARTNER	ENVIRONMENT	SEASON	BSQ. PRE	BSQ. POST	va
1	0	70	1	0	1	35	34	
2	0	73	0	1	0	36	36	
3	0	81	0	1	0	36	38	
4	1	82	1	1	0	37	39	
5	0	70	0	1	0	37	42	
6	0	78	0	1	0	37	40	
7	1	67	0	1	0	38	42	
8	1	73	1	0	1	38	41	
9	1	75	0	0	1	38	38	
10	0	69	1	1	0	39	38	
11	0	76	0	1	0	39	38	
12	0	72	0	1	0	40	42	
13	0	80	1	1	1	40	53	
14	1	69	0	0	1	40	39	
15	1	60	1		0	42	50	
16	1	67	0		0	42	43	
17	1	71	1		0	43	40	
18	1	62	0	1	0	43	38	
19	1	77	0	1	0	43	47	
20	1	55	0	0	1	43	40	
21	0	6		0	1	43	40	
22	1			1	0	44	50	
23	1		1	1	0	44	47	
24	1	63	0	1	0	44	46	
25	1	75	1	0	1	44	43	
26	0	66	0	0	1	46	42	
27	1	54	0	1	0	47	47	
28		61	0	1	0	47	36	
29	1	64	1	1	0	48	40	

1

Data View Variable View



Figure 3

BSQ jove.sav [DataSet8] - IBM SPSS Statistics Data Editor

File Edit View Data Transform Analyze Graphs Utilities Extensions Window Help

Compute Variable... 1

Programability Transformation...

Count Values within Cases...

Shift Values...

Recode into Same Variable...

Recode into Different Variables...

Automatic Recode...

Create Dummy Variables...

Visual Binning...

Optimal Binning...

Prepare Data for Modeling...

Rank Cases...

Date and Time Wizard...

Create Time Series...

Replace Missing Values...

Random Number Generator...

Run Pending Transformations

18 :

	GENDER
1	0
2	0
3	0
4	1
5	0
6	0
7	1
8	1
9	1
10	0
11	0
12	0
13	0
14	1
15	1

Compute Variable

Target Variable: DIFFERENCE 2

Type & Label... 3 / 5

Numeric Expression: BSQ.PRE - BSQ.POST

Gender [GENDER]

Age [AGE]

Partner [PARTNER]

Environment [ENVIR...]

Season [SEASON]

Body Shape Questi...

Body Shape Questi...

Experimental condi...

Function group:

All

Arithmetic

CDF & Noncentral CDF

Conversion

Current Date/Time

Date Arithmetic

Date Creation

Functions and Special Variables:

If... (optional case selection condition)

OK Paste Reset Cancel Help

6

Figure 5

The screenshot displays the IBM SPSS Statistics Data Editor interface. The main window shows a dataset named 'BSQ jove.sav [DataSet8]' with columns 'GENDER' and 'AGE'. The 'Analyze' menu is open, showing options like 'Reports', 'Descriptive Statistics', 'Bayesian Statistics', 'Tables', 'Compare Means', 'General Linear Model', 'Generalized Linear Models', 'Mixed Models', 'Correlate', and 'Regression'. The 'Frequencies' dialog box is open, showing the 'Variable(s)' list with 'Gender [GENDER]', 'Partner [PARTNER]', 'Environment [ENVIRON...', and 'Season [SEASON]'. The 'Display frequency tables' checkbox is checked. The 'Descriptives' dialog box is also open, showing the 'Variable(s)' list with 'Age [AGE]', 'Body Shape Questionna...', 'Body Shape Questionna...', and 'PRE-POST [DIFFEREN...'. The 'Save standardized values as variables' checkbox is unchecked. A red arrow points from the 'Frequencies' dialog box to the 'Descriptives' dialog box.

**BSQ jove.sav [DataSet8] - IBM SPSS Statistics Data Editor**

	GENDER	AGE
1	0	70
2	0	73
3	0	81
4	1	82
5	0	70
6	0	78

**Frequencies**

Variable(s):

- Gender [GENDER]
- Partner [PARTNER]
- Environment [ENVIRON...]
- Season [SEASON]

☒ Display frequency tables

OK Paste Reset Cancel Help

**Descriptives**

Variable(s):

- Age [AGE]
- Body Shape Questionna...
- Body Shape Questionna...
- PRE-POST [DIFFEREN...]

☐ Save standardized values as variables

OK Paste Reset Cancel Help

BSQ jove.sav [DataSet8] - IBM SPSS Statistics Data Editor

File Edit View Data Transform Analyze Graphs Utilities Extensions Window Help

1

Split File

Age [AGE]  
Partner [PARTNER]  
Environment [ENVIRON...]  
Season [SEASON]  
Body Shape Questionnai...  
Body Shape Questionnai...  
PRE-POST [DIFFERENC...]

☐ Analyze all cases, do not create groups  
☐ Compare groups  
☒ Organize output by groups 2

Groups Based on:  
Gender [GENDER]

☒ Sort the file by grouping variables  
☐ File is already sorted

Current Status: Analysis by groups is off.

3 OK Paste Reset Cancel Help

	GENDER	AGE	PARTNER	ENVIRONMENT	SEASON	BSQ. PRE	BSQ. POST	DIFFERENCE
1	0	70	1	0	1	35	34	1
2	0	73	0	1	0	36	36	0
3	0	81	0	1	0	36	38	-2
4	1	82	1	1	0	37	39	-2
5	0							-5
6	0							-3
7	1							-4
8	1							-3
9	1							0
10	0							1
11	0							1
12	0							-2
13	0							-13
14	1							1
15	1							-8
16	1							-1
17	1							3
18	1							5
19	1							-4
20	1							3
21	0							3
22	1							-6
23	1	75	1	1	0	44	47	-3
24	1	63	0	1	0	44	46	-2
25	1	75	1	0	1	44	43	1
26	0	66	0	0	1	46	42	4
27	1	54	0	1	0	47	47	0
28	0	61	0	1	0	47	36	11
29	1	64	1	1	0	48	40	8

Data View Variable View



Figure 7 illustrates the steps to perform a Paired-Samples T Test in IBM SPSS Statistics.

The main window shows the **Analyze** menu with **Compare Means** selected, and **Paired-Samples T Test...** highlighted (labeled 1). A red arrow points from this menu item to the **Paired-Samples T Test** dialog box.

The **Paired-Samples T Test** dialog box shows the **Paired Variables** list. The variables **Body Shape Quest...** and **Body Sh...** are selected (labeled 2). The **OK** button is highlighted (labeled 3).

The background data table is as follows:

	GENDER	AGE
1	0	70
2	0	73
3	0	81
4	0	70
5	0	78
6	0	69
7	0	76
8	0	72
9	0	80
10	0	67
11	0	66
12	0	61
13	0	73
14	0	77
15	0	70
16	0	68
17	0	72
18	0	74
19	0	75
20	0	55
21	0	52
22	0	51
23	0	50
24	0	59



Figure 8

BSQ jove.sav [DataSet8] - IBM SPSS Statistics Data Editor

File Edit View Data Transform **Analyze** Graphs Utilities Extensions Window Help

85 :

	GENDER	AGE
59	1	75 0
60	1	70 1
61	1	79 1
62	1	60 1
63	1	52 0
64	1	77 0
65	1	68 1
66	1	66 1
67	1	50 0
68	1	69 1
69	1	59 0
70	1	71 1
71	1	68 0
72	1	69 0
73	1	76 1
74	1	69 0
75	1	61 0
76	1	65 0
77	1	61 0
78	1	69 0
79	0	77 1
80	0	70 0
81	1	63 0
82	1	76 0

**Analyze** menu:

- Reports
- Descriptive Statistics
- Bayesian Statistics
- Tables
- Compare Means**
  - Means...
  - One-Sample T Test...
  - Independent-Samples T Test...
  - Summary Independent-Samples T Test
  - Paired-Samples T Test...
  - One-Way ANOVA...** (1)
- General Linear Model
- Generalized Linear Models
- Mixed Models
- Correlate
- Regression
- Loglinear
- Neural Networks
- Classify
- Dimension Reduction
- Scale
- Nonparametric Tests
- Forecasting
- Survival
- Multiple Response
- Missing Value Analysis...
- Multiple Imputation
- Complex Samples
- Simulation...
- Quality Control
- ROC Curve...
- Spatial and Temporal Modeling...
- Direct Marketing

**One-Way ANOVA** dialog box:

Dependent List: PRE-POST [DIFFEREN...]

Factor: Experimental condition ...

OK (3) Paste Reset Cancel Help

Contrasts... Post Hoc... Options... Bootstrap...

Figure 9

BSQ jove.sav [DataSet8] - IBM SPSS Statistics Data Editor

File Edit View Data Transform **Analyze** Graphs Utilities Extensions Window Help

85 :

	GENDER	AGE	SEASON	BSQ. PRE	BSQ. POST	DIFFERENCE	CONDITION
59	1	75	0			3	0
60	1	70	1			-9	0
61	1	79	1			2	1
62	1	60	1			-1	0
63	1	52	0			-8	0
64	1	77	0			7	1
65	1	68	1	59	58		
66	1	66	1	59	60		
67	1	50	0	60	35		
68	1	69	1	61	53		
69	1	59	0	61	63		
70	1	71	1	61	63		
71	1	68	0	62	67		
72	1	69	0	62	60		
73	1	76	1	62	70		
74	1	69	0	63	65		
75	1	61	0	64	51		
76	1	65	0	64	66		
77	1	61	0	65	60		
78	1	69	0	66	67		
79	0	77	1	66	62		
80	0	70	0	66	65		
81	1	63	0				
82	1	76	0				

**Analyze** menu options:

- Reports
- Descriptive Statistics
- Bayesian Statistics
- Tables
- Compare Means
- General Linear Model**
  - Univariate...
  - Multivariate...
  - Repeated Measures...** (1)
  - Variance Components...
- Generalized Linear Models
- Mixed Models
- Correlate
- Regression
- Loglinear
- Neural Networks
- Classify
- Dimension Reduction
- Scale
- Nonparametric Tests
- Forecasting
- Survival
- Multiple Response
- Missing Value Analysis...
- Multiple Imputation
- Complex Samples
- Simulation...
- Quality Control
- ROC Curve...
- Spatial and Temporal Modeling...
- Direct Marketing

**Repeated Measures Define Factor(s)** dialog box:

- Within-Subject Factor Name: PRE.POST (2)
- Number of Levels: 2 (3)
- Measure Name: BSQ (4)
- Buttons: Add, Change, Remove, Define (5), Reset, Cancel, Help



Figure 4

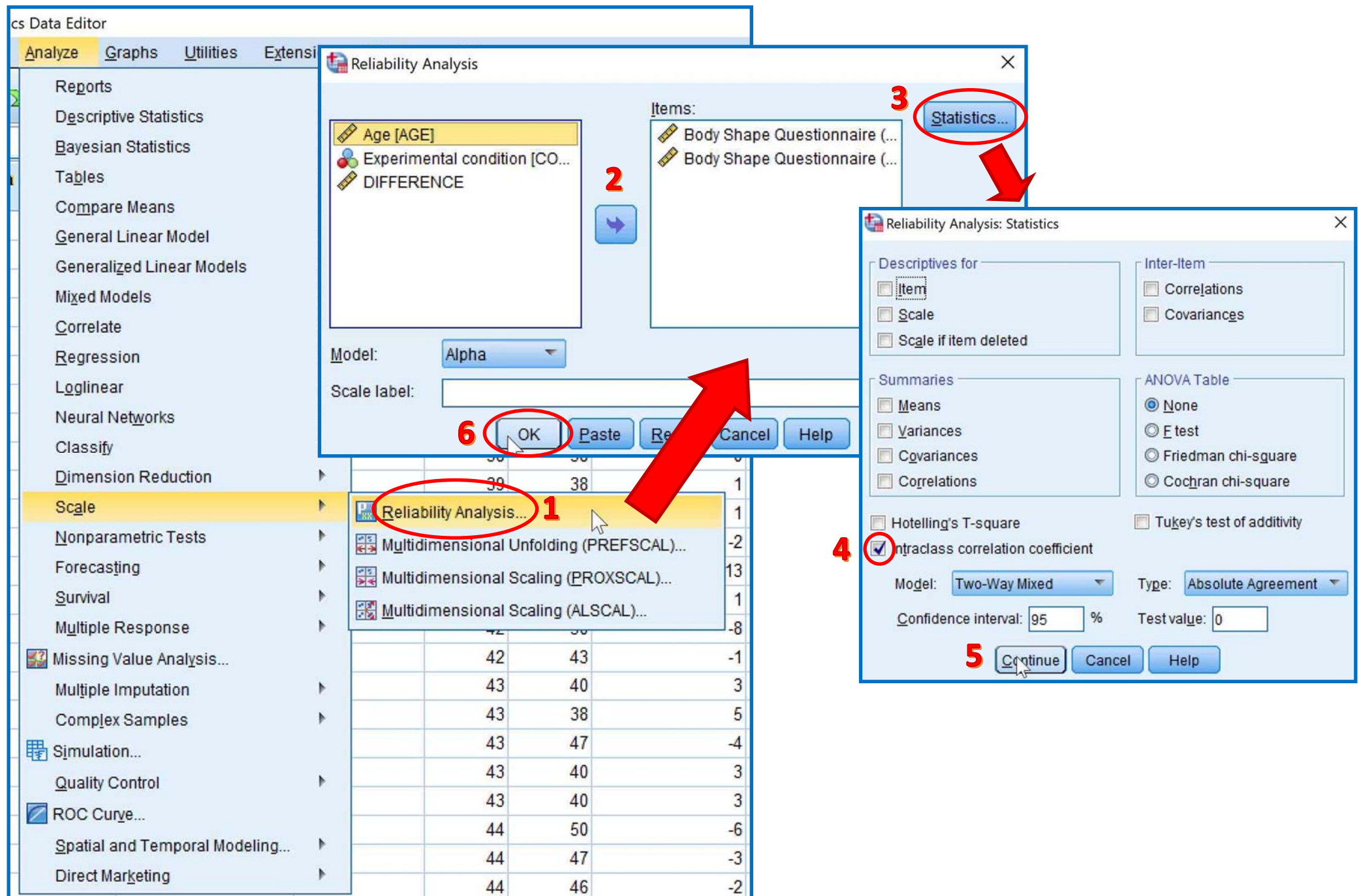
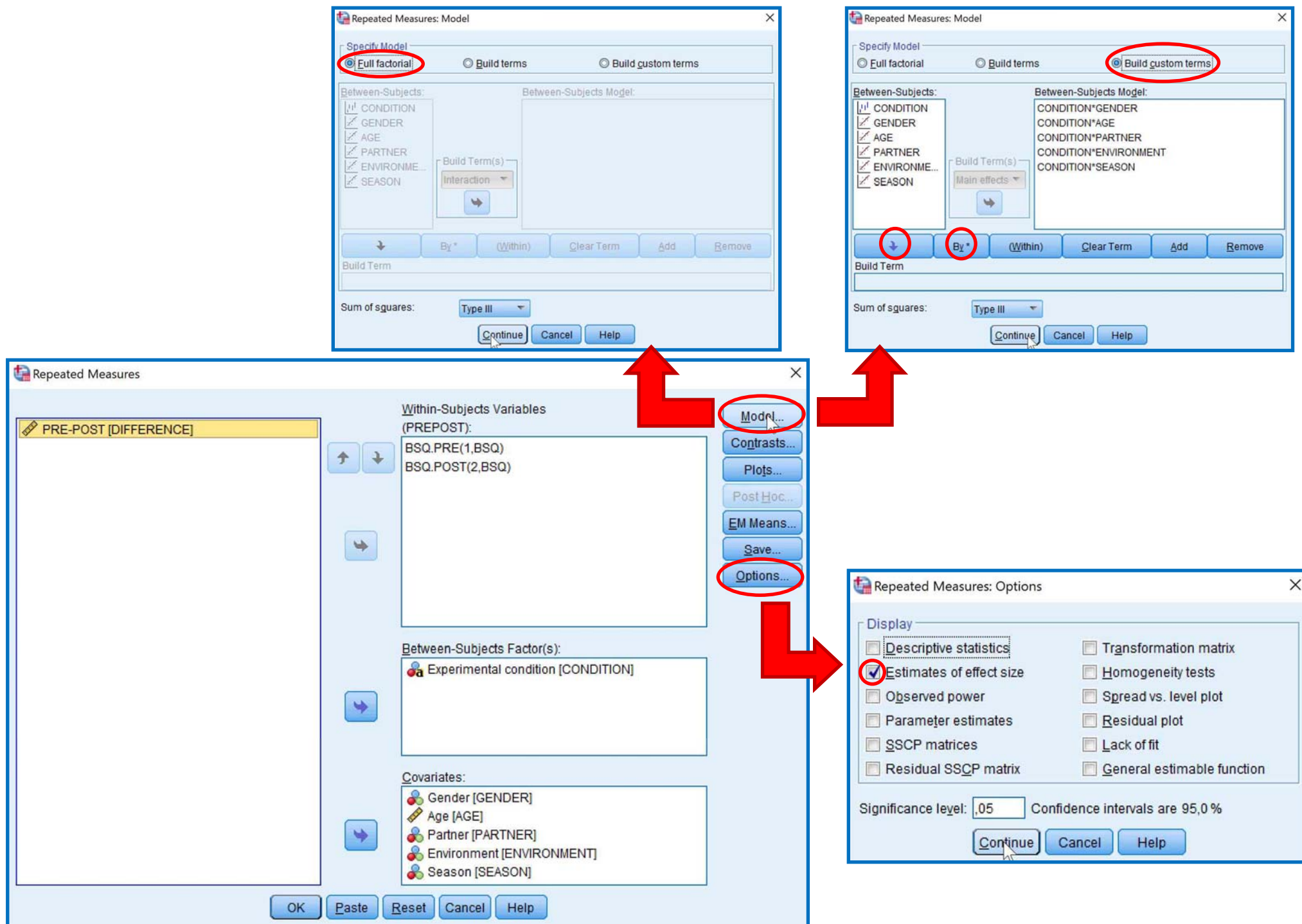


Figure 10

[Click here to access/download;Figure;Figure 10.pdf](#)



Variable Name	Type	Values
BSQ Pre-treatment measurement	Numerical	34-204
BSQ Post-treatment	Numerical	34-204
Experimental Condition	Dichotomous variable	{0, CONTROL} / {1, EXPERIMENTAL}
Gender	Dichotomous variable	{0, Man} / {1, Woman}
Age	Numerical	50-85
Stable Relationship Status	Dichotomous variable	{0, With a current partner} / {1, Without a current partner}
Environment of Residence	Dichotomous variable	{0, Rural} / {1, Urban}
Season of intervention	Dichotomous variable	{0, Cold} / {1, Warm}

Measure	Description
Scale	Numerical result obtained in the pre-treatment
Scale	Numerical result obtained in the measurement post-treatment
Nominal	Whether or not the participant has been in the experimental or control condition
Nominal	The biological gender of the participant
Scale	The age of the participants measured in years
Nominal	Whether or not the participant is in a formal relationship
Nominal	Whether or not the participant lives in countryside (locality of fewer than 1000 inhabitants) or metropolitan (locality of more than 1000 inhabitants)
Nominal	Whether or not the treatment took place in winter or summer

Experimental group (n=88)						
Pre-test		Post-test		Pre-Post		
<i>M</i>	<i>SD</i>	<i>M</i>	<i>SD</i>	<i>M</i>	<i>SD</i>	<i>p</i>
71.9	24.2	65.1	21.4	6.75	9.34	0.000

Control group (n=88)						
	Pre-test		Post-test		Pre-Post	
<i>Cohen's d</i>	<i>M</i>	<i>SD</i>	<i>M</i>	<i>SD</i>	<i>M</i>	<i>SD</i>
0.721	69.2	22.7	68.5	20.9	0.75	7.97



<i>p</i>	<i>Cohen's d</i>
0.38	0.094

Pre-test			Post-test			
<i>F</i>	<i>p</i>	<i>Eta squared</i>	<i>F</i>	<i>p</i>	<i>Eta squared</i>	<i>F</i>
0.56	0.455	0.003	0.443	0.506	0.003	12.734

Pre-Post	
<i>p</i>	<i>Eta squared</i>
0.000	0.068

Effect	Statistical tools	Value	F	Gl. hyp.	Gl error	<i>p</i>
BSQ differences between the PRE and POST test	Pillai's Trace	0.038	6.586	1	169	0.011
	Wilks' Lambda	0.962	6.586	1	169	0.011
Impact of the variable "Condition" (inter) over the PRE and POST treatment measurement of the BSQ test (intra)	Pillai's Trace	0.079	14.432	1	169	0.000
	Wilks' Lambda	0.921	14.432	1	169	0.000
Intercept	<i>MS</i> =1659627.56		1729.82	1	174	0

*MS= Mean Square*

*Partial Eta  
Squared*

---

0.038

0.038

---

0.079

0.079

---

0.909

---

	Experimental group (n=88)				
	Pre-test	Post-test	Pre-post	Pre-test	
	<i>M (SD)</i>	<i>M (SD)</i>	<i>M (SD)</i>	<i>p (Cohen's d)</i>	<i>M (SD)</i>
<b><i>Gender</i></b>					
WOMAN (n=146)	71,9 (25,2)	65,3 (22,0)	6,6 (9,85)	0,000 (0,673)	72,3 (21,4)
MAN (n=30)	71,5 (18,8)	63,9 (18,2)	7,57 (6,1)	0,000 (1,239)	55,2 (24,0)
<b><i>Marital status</i></b>					
With a current partner (n=117)	73,9 (23,5)	67,1 (21,9)	6,76 (10,26)	0,000 (0,437)	71,3 (23,6)
Without a current partner (n=59)	68,5 (25,3)	63,4 (21,3)	5,09 (8,8)	0,002 (0,218)	64,3 (20,0)
<b><i>Time of year</i></b>					
Summer (n=92)	72,1 (21,2)	67,7 (20,0)	4,40 (9,46)	0,003 (0,465)	70,2 (22,5)
Winter (n=84)	71,6 (27,5)	62,2 (22,8)	9,44 (8,54)	0,000 (1,104)	68,2 (23,1)
<b><i>Place of residence</i></b>					
Rural (n=63)	70,2 (18,4)	66,0 (19,1)	4,21 (8,69)	0,008 (0,484)	65,6 (20,6)
Urban (n=113)	72,9 (27,3)	64,6 (22,9)	8,35 (9,45)	0,000 (0,887)	71,0 (23,6)

Control group (n=88)		
Post-test	Pre-post	
<i>M (SD)</i>	<i>M (SD)</i>	<i>p (Cohen's d)</i>
71,3 (19,8)	1,07 (8,29)	0,277 (0,129)
55,9 (21,6)	-,69 (6,37)	0,672 (0,109)
68,4 (22,2)	2,9 (7,23)	0,004 (0,184)
66,5 (16,9)	-2,2 (7,7)	0,153 (0,183)
69,4 (20,1)	0,78 (8,93)	0,562 (0,088)
67,5 (21,8)	0,72 (6,93)	0,499 (0,104)
64,6 (17,8)	0,93 (9,28)	0,593 (0,100)
70,3 (22,1)	0,66 (7,33)	0,491 (0,090)

		<i>F</i>
<i>Gender</i>		
	WOMAN	0.001
	MAN	2.809
<i>Marital status</i>		
	With a current partner	0.355
	Without a current partner	0.483
<i>Time of year</i>		
	Summer	0.057
	Winter	1.224
<i>Place of residence</i>		
	Rural	0.014
	Urban	0.858



Pre-test		
<i>p</i>	<i>Eta squared</i>	<i>F</i>
0.97	0.017	1.779
0.105	0.091	1.264
0.552	0.003	0.100
0.49	0.008	0.369
0.812	0.001	1.499
0.271	0.013	0.014
0.906	0.000	0.321
0.356	0.008	0.058

Post-test		
<i>p</i>	<i>Eta squared</i>	<i>F</i>
0.184	0.012	10.576
0.270	0.043	2,120
0.752	0.001	5,525
0.546	0.006	11,200
0.225	0.019	3.929
0.905	0.000	9.288
0.573	0.005	1.635
0.809	0.001	11.949

Pre-post	
<i>p</i>	<i>Eta squared</i>
0.001	0.068
0.156	0.070
0.020	0.046
0.001	0.164
0.051	0.049
0.003	0.089
0.206	0.026
0.001	0.097

Effect	Statistical tool	Value	F
Impact of the variable <b>Gender (inter)</b> over the PRE and POST treatment measurement of the <b>BSQ (intra)</b> test keeping in mind the variable <b>Condition (inter)</b>	Pillai's Trace	0.003	0.266
	Wilks' Lambda	0.997	0.266
Impact of the variable <b>Age (inter)</b> over the PRE and POST treatment measurement of the <b>BSQ (intra)</b> test keeping in mind the variable <b>Condition (inter)</b>	Pillai's Trace	0.030	2.558
	Wilks' Lambda	0.970	2.558
Impact of the variable <b>Marital status (inter)</b> over the PRE and POST treatment measurement of the <b>BSQ (intra)</b> test keeping in mind the variable <b>Condition (inter)</b>	Pillai's Trace	0.028	2.389
	Wilks' Lambda	0.972	2.389
Impact of the variable <b>Time of Year (inter)</b> over the PRE and POST treatment measurement of the <b>BSQ (intra)</b> test keeping in mind the variable <b>Condition (inter)</b>	Pillai's Trace	0.010	0.804
	Wilks' Lambda	0.990	0.804
Impact of the variable <b>Place of Residence (inter)</b> over the PRE and POST treatment measurement of the <b>BSQ (intra)</b> test keeping in mind the variable <b>Condition (inter)</b>	Pillai's Trace	0.011	0.882
	Wilks' Lambda	0.989	0.882

Gl. hip.	Gl. error	<i>p</i>	<i>Partial Eta Squared</i>
2	165	0.767	0.003
2	165	0.767	0.003
2	165	0.081	0.03
2	165	0.081	0.03
2	165	0.095	0.028
2	165	0.095	0.028
2	165	0.449	0.010
2	165	0.449	0.010
2	165	0.416	0.011
2	165	0.416	0.011

Name of Material/ Equipment	Company	Catalog Number
Body Shape Questionnaire (BSQ)	International Journal of Eating Disorders	1987
IMAGINA: programa de mejora de la autoestima y la imagen corporal para adultos	Sinindice	2012
Statistical Package for the Social Sciences (SPSS)	IBM	24

### **Comments/Description**

Body Shape Questionnaire (BSQ) developed by Cooper, Taylor, Cooper, and Fairburn (1987), which was adapted and scaled to Spanish participants by Raich et al. (1996). This is a self-report of 34 items following a Likert scale that goes from 1 (never) to 6 (always). The final score ranges from 34 to 204 and scoring above 110 indicates dissatisfaction and discomfort with physical appearance (Cooper et al., 1987). It is a reliable instrument since several studies have reported Cronbach's  $\alpha$  between 0.95 and 0.97. Also, the BSQ has good external validity, i.e., it is convergent with other similar tools, such as the Multidimensional Body Self-Relations Questionnaire, MBSRQ (Cash, 2015) and the body dissatisfaction subscale of the Eating Disorders Inventory, EDI (Garner, Olmstead, and Polivy, 1983).

IMAGINA Program was meant to be a therapeutic tool to increase a body image satisfaction of older adults in Spain. It has eight group-sessions of 90-120 minutes duration each, aiming at entertaining and engaging participants. Body image and self-esteem are expected to improve through social participation, communication, body image workshops, and healthy nutrition information.

Software package used in statistical analysis of data

Dear editor and reviewers,

First, we would like to thank you for your attention and professionalism showed during the revision and evaluation of our work. We have attended all the requests made.

We hope that the reviewed version of the paper meets your expectations. Despite the many changes done, we would like to clarify that we are open to further improve the paper if required.

Yours faithfully,

The authors of the manuscript



## SOCIODEMOGRAPHIC AND ATTRIBUTIVE DATA OF THE SAMPLE

TO BE FILLED IN BY THE RESEARCHER

**LOCATION OF THE WORKSHOP:**

**DATE OF THE WORKSHOP:**

*Circle the correct answer*

**EXPERIMENTAL CONDITION:**

CONTROL / EXPERIMENTAL

TO BE FILLED IN BY THE PARTICIPANT

**AGE:**

*Circle the correct answer*

**GENDER:**

Male /Female

**RELATIONSHIP STATUS:**

In couple / Separated / Single / Widow- widower

We inform you that the personal data collected in this document, as well as those that you provide in the future, either derive from the development of the service in charge or are generated as a result of the data processing, all of them necessary to be able to provide our services, will be incorporated into a Mixed file, owned by the Alfonso X the Wise University, St: Avda Universidad 1, 28190 Villanueva de la Cañada (Madrid), authorizing it to process them automatically or not, as well as the transfer in favor of persons dedicated to the analogue purpose, for its use in relation to the development of its activity consisting of research and dissemination of its results, including the sending of information about our services or activities.

The Alfonso X the Wise University guarantees the confidentiality of your data assuming the obligation to comply with all those legal and internally established obligations. We inform you that you can exercise the rights of access, rectification, opposition or cancellation of your data, in accordance with LO 15/1999 of December 13 and regarding the possible opposition to the processing of your data for promotional purposes provided in the Law 34/2002, of July 11, of services of the information society and electronic commerce, rights that may be exercised by email addressed to rcabrero@uax.es or by writing to the address indicated above, accompanying a photocopy of your DNI.

**After reading the above, I DECLARE that I have been adequately informed of the details of the study in which I will participate voluntarily, and that I have had the possibility to answer any questions regarding the study.**

**Signature of the participant:**