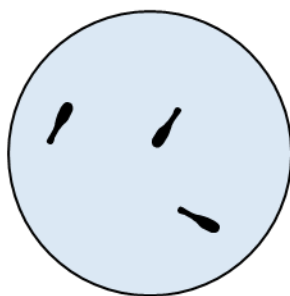


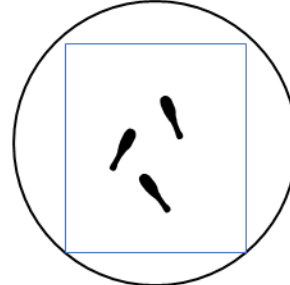
Danieau/ water
from fish facility

Transfer larvae with plastic
pipette into new 35 mm dish
with ACSF and add anesthetic

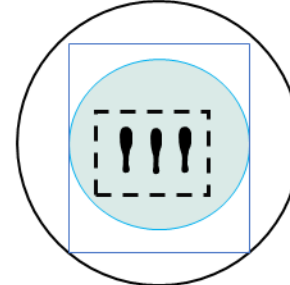


ACSF containing
anesthetic

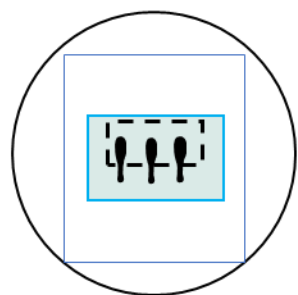
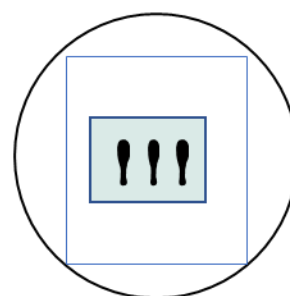
Transfer anesthetized larvae
with plastic pipette into new
35 mm dish with rectangular
coverslip



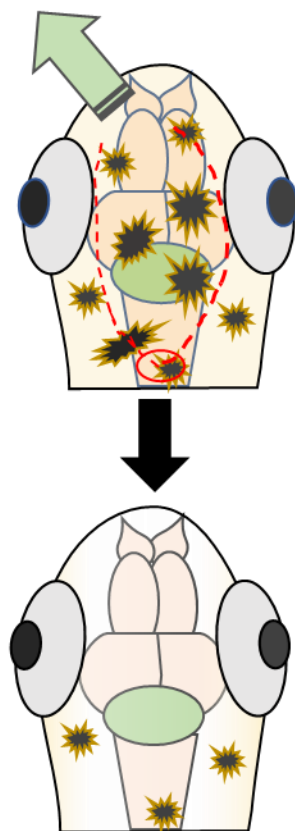
Embed larvae in dorsal
orientation as close to the
surface as possible with LM-
Agarose



Trim excess agarose away
(only necessary for inverted
microscope users!)



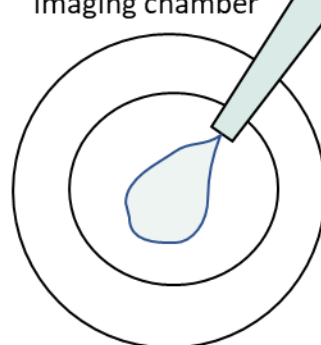
Trim away excess
agarose above the brain,
then perform the skull
opening surgery



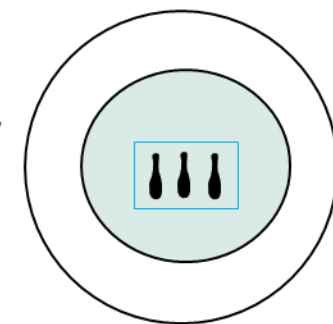
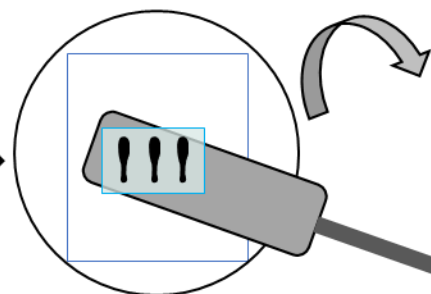
For users with upright microscopes:
fill the dish with (oxygenated) ACSF
and start imaging



For users with inverted
microscopes: add a drop
of LM-agarose to your
imaging chamber



Slide a spatula underneath the agarose block and
flip it for 180° before pushing the block gently to
the bottom of the imaging chamber.



Fill the imaging chamber
with (oxygenated) ACSF
and start imaging

