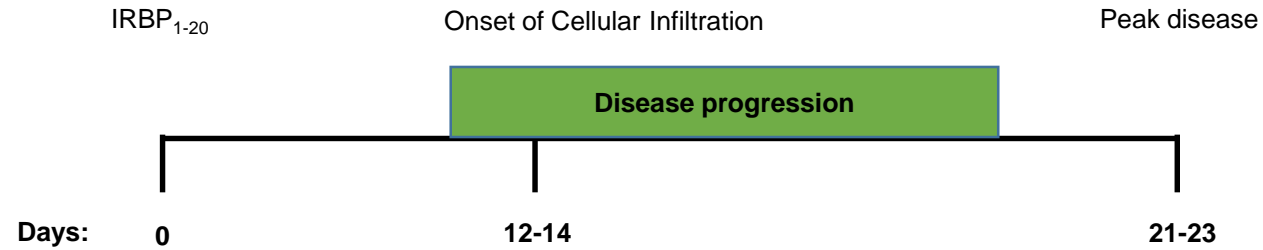
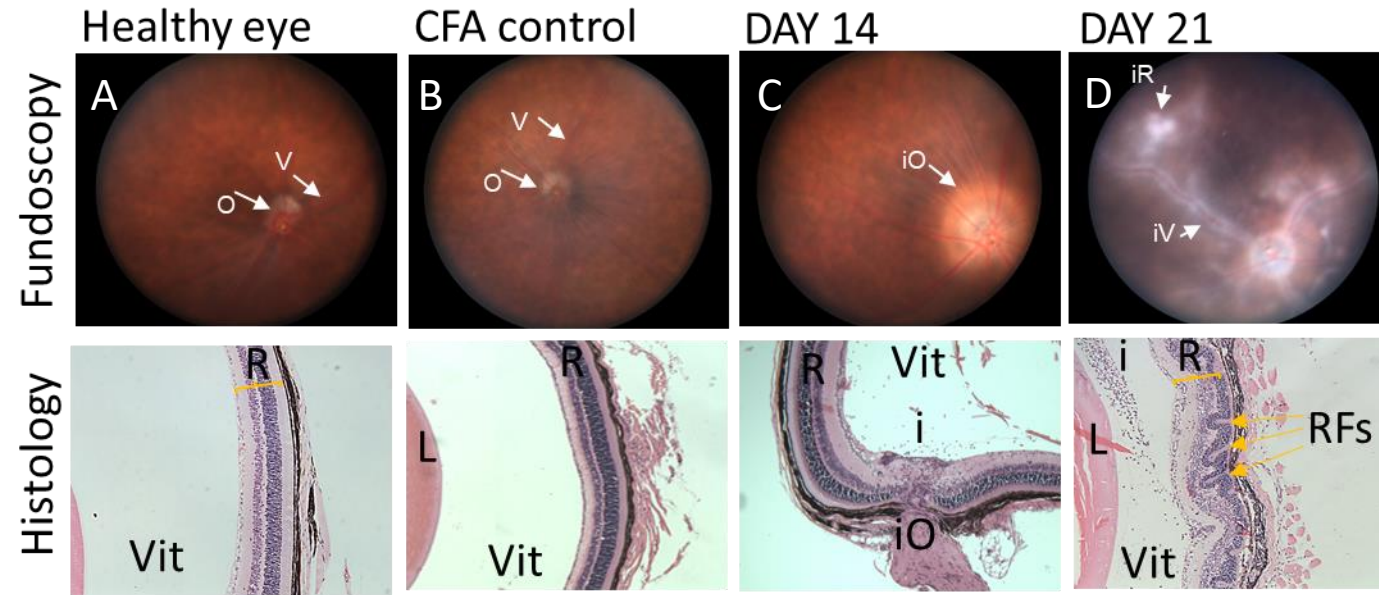


Figure 1



**Figure 1. Schematic timeline of clinical and histological disease progression in IRBP<sub>1-20</sub> induced EAU.** A timeline outlining the important cellular events throughout the progression of IRBP<sub>1-20</sub> induced EAU. From immunisation, the first signs of clinical disease, as detected by fundoscopic imaging and histopathological analysis, falls between days 12-14. The disease will then continue to progress, according to these parameters, until a peak is reached around day 21-23.

Figure 2



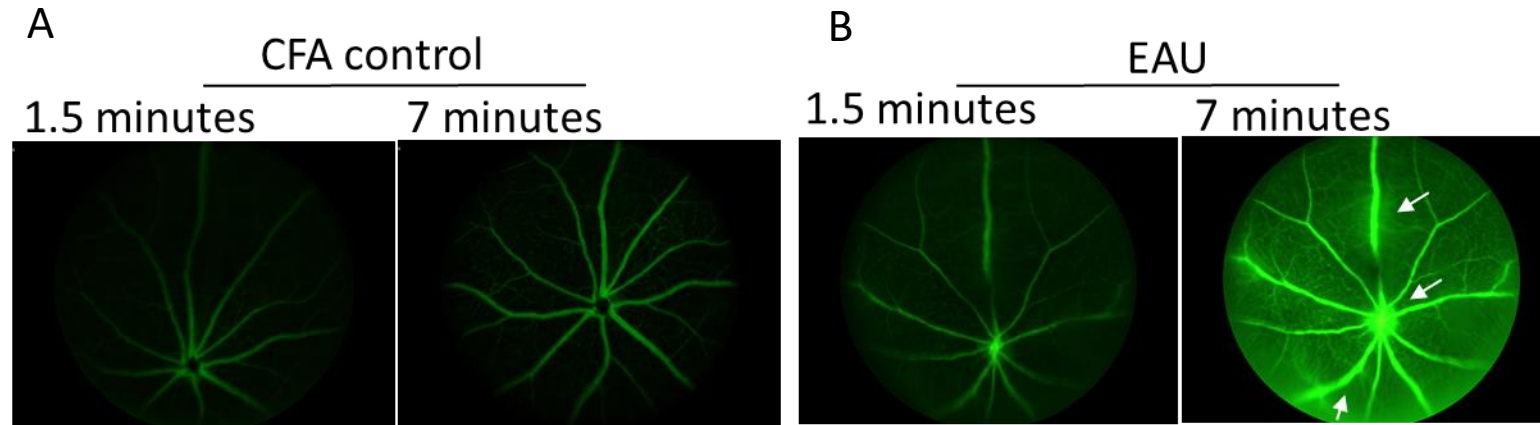
**Figure 2. Representative fundoscopic images correlating with histological sections at different stages of IRBP<sub>1-20</sub> induced EAU disease in C57BL/6J mice.**

Clinical fundoscopic and corresponding tissue images of C57BL/6J immunised with IRBP<sub>1-20</sub> peptide. (A and B) fundoscopic images and histological sections of eye obtained from healthy and CFA injected mice. Retina has no sign of inflammation and corresponding histology sections show a preserved retinal layers. (C) Fundoscopic image of eye obtained from C57BL/6J mouse 14 days post immunization demonstrate classic signs of EAU, presenting with severe optic disc swelling in the early stage of disease, corresponding histology shows infiltrating immune cells into vitreous space. (D) Fundoscopic images of eye obtained from C57BL/6J mouse 21 days post immunization with inflamed vessels, retinal tissues and infiltrating immune cells throughout the retinal layers, retinal folding and structural damages observed in the corresponding histology.

*V= vessel, O= optic disk, R=retina, L=lens, Vit=vitreous*

*iO= inflamed optic disk, iV= inflamed vessel, iR= inflamed retina, i= infiltrating cells in vitreous, RFs=retinal folds.*

Figure 3



**Figure 3. Representative images of fluorescent angiography taken using Micron III imaging system at peak disease.** C57BL/6J mice were injected subcutaneously with 2% fluorescein and images taken at various timepoints after circulation of the tracer. (A) CFA only control mouse taken at 1.5 and 7 minutes post fluorescein administration. (B) Representative images of IRBP<sub>1-20</sub> immunized mice taken 1.5 and 7 minutes, respectively, after receiving fluorescein. White arrow indicates vessel leakage.