

Journal of Visualized Experiments

Live imaging of chemokine receptors in zebrafish neutrophils during wound responses

--Manuscript Draft--

Article Type:	Invited Methods Article - JoVE Produced Video
Manuscript Number:	JoVE61679R2
Full Title:	Live imaging of chemokine receptors in zebrafish neutrophils during wound responses
Corresponding Author:	Milka Sarris UNITED KINGDOM
Corresponding Author's Institution:	
Corresponding Author E-Mail:	ms543@cam.ac.uk
Order of Authors:	Caroline Coombs Antonios Georgantzoglou Hugo Poplimont Hazel A. Walker Milka Sarris
Additional Information:	
Question	Response
Please indicate whether this article will be Standard Access or Open Access.	Open Access (US\$4,200)
Please indicate the city, state/province, and country where this article will be filmed . Please do not use abbreviations.	Cambridge, UK
Please confirm that you have read and agree to the terms and conditions of the author license agreement that applies below:	I agree to the UK Author License Agreement (for UK authors only)
Please specify the section of the submitted manuscript.	Immunology and Infection
Please provide any comments to the journal here.	

Dr. Milka Sarris, MRC Fellow,
Lecturer in University of Cambridge,
Trinity College Fellow



Date: Monday, August 10, 2020

Department of Physiology, Development
And Neuroscience,
Downing Site, CB2 3DY
Cambridge
Tel: 07476090696
Email: ms543@cam.ac.uk

Dear Dr Bajal,

We are hereby submitting the additional editorial revisions for the manuscript entitled “Live imaging of chemokine receptors in zebrafish neutrophils during wound responses”. We have answered your specific comments in the manuscript as tracked changes. We have reduced the highlighted section by removing section 1 and reducing the highlighted text in section 6. We have also uploaded separate supplementary files for related scripts and the reply from Springer Nature regarding the request to reuse material.

We are grateful for your consideration and look forward to hearing from you.

Yours sincerely,

A handwritten signature in black ink, appearing to read "MS43".

Milka Sarris

TITLE:

Live Imaging of Chemokine Receptors in Zebrafish Neutrophils During Wound Responses

AUTHORS AND AFFILIATIONS:

Antonios Georgantzoglou¹, Caroline Coombs¹, Hugo Poplimont^{1*}, Hazel A. Walker^{1*}, Milka Sarris¹

¹University of Cambridge, Department of Physiology, Development and Neuroscience, Downing Site, Cambridge, UK

*These authors contributed equally

Corresponding Author:

Milka Sarris (ms543@cam.ac.uk)

Email addresses of Co-Authors:

Antonios Georgantzoglou (ag718@cam.ac.uk)

Caroline Coombs (carolinegc@hotmail.co.uk)

Hugo Poplimont (hcgp2@cam.ac.uk)

Hazel A. Walker (haw36@cam.ac.uk)

KEYWORDS:

zebrafish, chemokine, neutrophil, wound, imaging, microscopy

SUMMARY:

Here we describe protocols to perform live imaging and quantitative analysis of chemoattractant receptor dynamics in zebrafish neutrophils

ABSTRACT:

Leukocyte guidance by chemical gradients is essential for immune responses. Neutrophils are the first cells to be recruited to sites of tissue damage where they execute crucial antimicrobial functions. Their trafficking to these loci is orchestrated by several inflammatory chemoattractant, including chemokines. At the molecular level, chemoattractant signaling is regulated by the intracellular trafficking of the corresponding receptors. However, it remains unclear how subcellular changes in chemokine receptors affect leukocyte migration dynamics at the cell and tissue level. Here we describe a methodology for live imaging and quantitative analysis of chemokine receptor dynamics in neutrophils during inflammatory responses to tissue damage. These tools have revealed that differential chemokine receptor trafficking in zebrafish neutrophils coordinates neutrophil clustering and dispersal at sites of tissue damage. This has implications for our understanding of how inflammatory responses are self-resolved. The described tools could be used to understand neutrophil migration patterns in a variety of physiological and pathological settings and the methodology could be expanded to other signaling receptors.

INTRODUCTION:

Leukocyte migration is of paramount importance for immune responses. Immune cells are prototypical migratory cells, which are remarkably capable of traversing tissues and blood vessels and sensing a range of chemical guidance cues to migrate directionally towards microbes or other host cells of importance. Correct guidance relies on the recognition of chemoattractants, among which chemokines represent the most prominent category¹. Chemokines are recognized by highly specific seven-transmembrane G protein coupled receptors. Upon chemokine binding, chemokine receptors change conformation leading to the activation of associated trimeric G proteins and their dissociation into functional signaling subunits that promote cytoskeletal changes and directed migration¹. Secondly, chemokine receptors are phosphorylated, and this modification leads to desensitization to attractant, which can be followed by rapid re-sensitization/recycling or intracellular degradation and down-regulation from the cell surface². These receptor dynamics influence the duration and dose of signaling received by the cells but how they affect leukocyte migration behavior has been difficult to elucidate in vivo.

Tracking receptor dynamics in live leukocytes in traditional mammalian systems faces several challenges. For live studies, receptor fusions with fluorescent proteins must be expressed in the cells. This is challenging in primary leukocytes, particularly in neutrophils, and studies so far have used surrogate neutrophil cell lines to express chemokine receptors^{3,4}. Generation of transgenic mouse models, in which leukocytes express a fluorescent receptor or mutant receptors with informative trafficking defects^{5,6}, entails considerable investment of time and resources. Even in these instances, the imaging resolution and contrast for imaging receptor dynamics in the live animal can be limited and studies have used immunohistochemistry on fixed tissue sections⁵. Given these technical challenges, our understanding of how chemoattractant receptors dynamics affect cell behavior in a live tissue setting is currently limited.

Here we provide a methodology to monitor receptor trafficking in zebrafish neutrophils. Zebrafish are genetically tractable, like mice, but transgenesis is relatively more straightforward through the use of efficient transposon systems and direct zygote manipulation⁷. The transparent larva is ideally amenable to imaging. The chemokine receptor dynamics have been visualized in primordial germ cells and the lateral line primordium by expression of corresponding fusions with fluorescent reporters⁸⁻¹⁰. Zebrafish larvae are equipped with mature neutrophils that have highly conserved genetic and cellular properties with respect to mammalian neutrophils. Subcellular signaling dynamics such as cytoskeletal dynamics and polarity regulators have been visualized in these cells by the generation of corresponding transgenic lines¹¹⁻¹³. Recently, we visualized and functionally analyzed chemokine receptor dynamics in neutrophils during the course of inflammatory responses to tissue damage¹⁴. Here, we describe the generation of transgenic reporter lines for chemokine signaling in neutrophils, preparation of embryos for live imaging, a wound assay for studying neutrophil signaling and the protocol for acquisition and analysis of images. We also provide a side-protocol to test chemokine receptor responses to candidate ligands, which is useful when trying to establish ligand recognition patterns in uncharacterized receptors. These techniques can be used in combination with further genetic manipulations, such as inhibition of endogenous chemokine expression or generation of mutant receptors with altered ligand-induced trafficking, to interrogate how specific signaling dynamics affect leukocyte behavior in vivo. The transgenic lines expressing fluorescently tagged chemokine receptors can

also be used as reporters for endogenous chemokine gradients, which are otherwise difficult to detect by direct antibody staining. The described methodology provides scope for expanding the generation of reporters to other immuno-signaling receptors.

PROTOCOL:

NOTE: All zebrafish were kept according to the ARRIVE guidelines and UK Home Office regulations, UK Animals (Scientific Procedures) Act 1986.

1. Generation of transgenic reporter zebrafish larvae for imaging receptor trafficking in leukocytes

1.1. Generate Tol2-based construct for tissue specific expression of the fluorescently tagged receptor of interest. For neutrophils, use promoter sequences from the lysozyme C¹⁵ and myeloperoxidase gene¹⁶. The construct can be designed as a fusion with a single fluorescent protein (e.g. GFP), a tandem fluorescent timer (e.g., a fast-folding GFP and a slower maturing tagRFP^{8, 14, 17}) or a bicistronic expression of reporter GFP and a control membrane marker⁹ (see **Discussion** for considerations when choosing the approach).

NOTE: This construct does not recapitulate endogenous levels of receptor expression but is useful for obtaining high level of receptor expression in the cell type of interest. Consult the literature on similar receptors^{3,5,6,8–10,14} to decide on the position of the fluorescent tag.

1.2. Set up a tank containing wild type adult males and females following standard husbandry practices¹⁸, separated by a barrier the day before egg spawning.

1.3. On the day of egg spawning, prepare transgenesis mixture for microinjection containing 12.5 ng/μL of Tol2 DNA construct and 17.5 ng/μL of transposase mRNA⁷. Lift barriers from fish tanks shortly after the lights come in the morning (this may vary in different fish facilities) and collect eggs within 15 min for mRNA injection.

NOTE: Ensure the DNA solution is RNase free to avoid degradation of the transposase mRNA in the mixture. An option to circumvent this is to inject eggs with separate solutions of Tol2 construct and transposase.

1.4. Follow standard protocols for transgenesis and microinjection of zebrafish eggs¹⁹.

1.5. Inject 1 nL of the solution into the cell of one-cell stage embryos.

NOTE: The expression results are more consistent when injecting inside the cell and discarding the injections that may not be clearly inside the cell. One-cell stage embryos are aimed for because of the variability of volume injection per cell when injecting 2-16 cell stage embryos. An option would be to separate the one-cell stage injections from batches of later injections, in case these have different efficacies.

1.6. Check the injected embryos later in the day and remove unfertilized or dead+ eggs to keep the clutch healthy.

1.7. At 3 days post-fertilization (dpf), screen larvae under a fluorescent microscope. The marker will be visible in neutrophils, particularly in the caudal hematopoietic tissue (CHT), which is rich in these cells.

NOTE: The percentage of cells labeled varies with different constructs, but usually 20-60% of neutrophils are expected to express the construct. Lower percentages usually predict more screening at the adult stage. It is a good practice to also verify correct localization of the receptor at the membrane, with a higher-resolution imaging approach, in a sample of these embryos before growing the fish.

1.8. Grow positive larvae following standard husbandry practices²⁰. These represent the F0 generation.

1.9. At 3 months of age, screen F0 fish for founders. Cross individual fish with a non-transgenic wild type and screen their offspring at 3 dpf for the expression of the receptor by viewing under the dissecting scope. Depending on the transgenesis success, which varies with each construct, observe a percentage of positive offspring in a subset of the crosses.

NOTE: For good transgenesis, about a third to a half of adults will give positive offspring. The percentage of offspring that is positive in a clutch varies with the copy number of transgenes inserted and, can be between 10-60%. It is helpful to keep track of mendelian ratios within the clutches to identify single insertion transgenics (these are more easily identified in F2 clutches by looking for a 50% ratio of positive larvae)²⁰.

1.10. Grow the positive offspring, which represent the F1 generation.

1.11. At 3 months of age, screen F1 adults in the same way to establish stable F2 transgenic line.

1.12. Perform experiments on F2 larvae after validating the neutrophil-specific expression of the transgene.

NOTE: During the transgenesis, one may observe varying levels of receptor expression and it is advisable to keep different transgenic clutches to obtain the most appropriate expression level for the biological questions. Initial results may be obtained in F0 or F1 larvae.

2. Collecting zebrafish embryos for assessing leukocyte wound responses

2.1. After having established a stable transgenic reporter line, set up a cross between adult and female transgenic fish and collect eggs the next morning.

2.2. Grow embryos at 28.5 °C in E3 medium (or egg water¹⁸).

2.3. Optionally, at 24 hpf, incubate embryos in a centrifuge tube containing 50 mL of E3 medium supplemented with 0.003% bleach for 5 min. Subsequently rinse 3 times in E3 medium by letting the tube stand for a couple of minutes to allow the embryos to settle in the bottom and then decanting and replacing the medium.

NOTE: This provides a level of control on the infection exposure of the larvae, which may affect the behavior of leukocytes during wounding.

2.4. After bleaching, keep embryos in E3 medium supplemented with 0.003% of 1-phenyl-2-thiourea to prevent melanin synthesis. Methylene blue, which is often used to prevent fungal infections, is not added here, to minimize tissue autofluorescence.

2.5. Allow larvae to hatch naturally and use at 3 dpf when neutrophils are abundant²¹.

3. Ventral fin wounding of larvae

3.1. Prepare larvae for wounding. Use larvae at 2.5-3.5 dpf, when abundant neutrophils are observed. Transfer larvae to E3 medium supplemented with 160-200 mg/L tricaine MS222.

NOTE: Concentrated solutions of tricaine should be prepared and frozen in aliquots in advance and thawed on the day.

3.2. Leave the larvae in E3+tricaine medium for 15 min to ensure they are anesthetized. Check their responses by gently touching with a small paintbrush or similar tool.

3.3. Select larvae with transgenic receptor expression under a fluorescent dissecting scope.

3.4. Transfer larvae to a 120 mm Petri dish in E3 + tricaine for wounding. Using a sterile scalpel cut the ventral fin of the larva, while observing under the dissecting scope (**Figure 1**).

NOTE: The idea is to perform a deep enough cut to cause substantial neutrophil recruitment but without cutting the vessels of the CHT. The cut is made perpendicular to the CHT axis such that the incision nearly reaches the vessels of the CHT. This takes some practice and should first be performed with supervision on larvae that are not generated for this purpose (e.g., excess larvae from another experiment).

4. Preparation of larvae for live imaging

4.1. Dissolve low melting point (LMP) agarose in E3 medium by heating to obtain a liquid 2% agarose solution.

4.2. Allow this solution to cool down to 60 °C.

NOTE: Keep a flask or tube with agarose in an incubator at 60 °C to avoid the agarose setting between the mounting of different larvae.

4.3. Pipette 0.5 mL of the liquid LMP + E3 in a glass bottom dish for microscopy imaging.

4.4. Pipette a wounded, anesthetized zebrafish larva along with 0.5 mL of E3 + 2x Tricaine in the glass bottom dish.

4.5. Gently mix the two solutions to obtain a 1% LMP/1x Tricaine agarose/E3 solution, avoiding generation of bubbles. Orient the embryo laterally and gently push down so that the caudal part of the fish is as close as possible to the glass.

NOTE: The tissue to be imaged must be as close as possible to the glass bottom when imaging with an inverted microscope. The setting of orientation for the larva must be quick so that the agarose does not set before the larva is positioned.

4.6. Let the agarose solution cool down and solidify for 5-10 min. Test whether the agarose is set by gently touching the agarose gel with a small paint brush or tip.

4.7. Once the agarose is solid, add 2 mL of E3 supplemented with 0.2 mg/mL of tricaine to the imaging plate.

5. Live confocal imaging

NOTE: Image embryos on a spinning disk confocal microscope or equivalent (**Figure 2**). A laser scanning microscope can also be used but the temporal resolution of the dynamics will be more limiting. Prepare the imaging settings before bringing the wounded larva, so the response can be imaged as quickly as possible after wounding. Neutrophils arrive to the wound within 5 min and receptors in the first arriving cells may internalize within this time frame. With practice it is possible to image as early as 15 min post-wounding.

5.1. Turn on the microscope: laser, camera and computer as per manufacturer instructions.

5.2. Use acquisition software to set up the imaging settings. Choose lasers for the appropriate fluorophores and approximate exposure times based on previous experiments (acquire GFP with 488 nm and tagRFP with 561 nm laser).

5.3. Transfer the plate with the mounted embryo, as soon as possible after agarose sets, onto the confocal imaging spinning disc platform.

5.4. Use the microscope eye piece to find the fish in the dish using the stage joystick.

5.5. Focus on the wound area, using the focusing knob.

NOTE: To find the area of interest it may be easier to use a low magnification air objective (10x).

5.6. Select the field to image around the wound. Use a 30x/40x objective with high numerical aperture to obtain sufficient resolution.

5.7. Use the software buttons to adjust the exposure time so that the fluorescent marker can be seen with good contrast but without saturating the signal.

NOTE: The exposure time must be as low as possible to minimize fluorescent exposure and maximize temporal resolution in the time-lapse. The laser power depends on the condition of the laser but needs to be adjusted to a level that permits low enough exposure time for dynamic imaging.

5.8. Use the software buttons to select the volume to image as a z-stack

5.9. Set up a time lapse every 30 s for the desired duration.

NOTE: For sterile ventral fin wounds, the maximum recruitment is observed by 2-3 h.

5.10. Before launching the time-lapse, take a bright field snapshot to document the field of view. If possible, acquire bright field within the time-lapse movie.

6. Quantification of receptor internalization in zebrafish neutrophils

6.1. Record the time-interval of image acquisition and the pixel size of the image. Keep a record of how many minutes post-wounding the imaging started.

6.2. Open the image datasets using Fiji by dragging the image onto the software interface, select a representative frame of interest for each dataset using the time slider, e.g., at 1-1.5 h post-wounding, and save it.

6.3. Proceed with MATLAB to process the image dataset.

6.4. Create a new script and include functions for image reading (line 6 in script called 'select_neutrophils.m' for centroid definition in **Supplementary File 1**), opening (line 11 in **Supplementary File 1**) and manual selection of points on the image (line 12 in **Supplementary File 1**).

6.5. Open the frame of interest by running this script (**Supplementary file 1**), identify the neutrophils to analyze by visual inspection, click on them and record an estimation of their centroids, both in the ventral fin wound and in the CHT.

NOTE: The non-mobilized neutrophils in the CHT serve as an internal reference for neutrophils whose receptor distribution remains constant. This allows normalization of contrast values of cells at the wound to an internal reference.

6.6. Proceed with segmentation of the neutrophils in each frame using active contours technique²² as described in steps below.

6.7. Create a function to include the metadata required for segmentation by active contours (i.e., number of iterations, bias of contour, estimated centroid etc)²² (see 'wound_data.m' in **Supplementary File 2**).

6.8. Create a script that calls the function 'wound_data.m' to input the necessary information for segmentation of each neutrophil (line 28 in script called 'calc_contrast.m' in **Supplementary File 3**).

6.9. Include in the script commands for image reading (line 32 in **Supplementary File 3**).

6.10. Add the generation of a black image (i.e. image where pixel values are zeros) with an equal size to the input image (line 44 in **Supplementary File 3**) and the definition of a square of 10 × 10 pixels around the centroid of each neutrophil (line 45 in **Supplementary File 3**).

6.11. Include the neutrophil segmentation using active contours (lines 48-49 in **Supplementary file 3**) and the removal of small false detected objects (line 52 in **Supplementary File 3**).

NOTE: The initial segmentation contour is the square around the centroid, which evolves by active contour technique based on the pixel intensities, the number of iterations and the bias of contour. The result of segmentation is a binary mask where all pixels have value 0 apart from the neutrophil area whose pixels have value 1.

6.12. Include the multiplication of the segmented binary image with the original one to get the pixel intensities of the neutrophil only, with the rest of the image being not-a-number, so it does not contribute to calculations (lines 56-57 in **Supplementary File 3**).

6.13. Add the calculation of the gray-level co-occurrence matrix for each neutrophil (GLCM)^{14, 23} (line 61 in **Supplementary File 3**). GLCM is another representation of the image showing relative position of pixels in terms of pixel intensity.

6.14. Include the calculation of contrast of the neutrophil based on the GLCM (lines 62,65 in **Supplementary File 3**). The contrast metric measures differences in intensity between neighboring pixels. Pixels are compared with pixels certain distance apart, which can be adjusted empirically based on the size of local peaks in intensity. As an indication, for the images, with a pixel size of 0.389 μm, when the receptor showed vesicular distribution each bright dot was in the range of 5 pixels. Therefore, intensities were compared in pixels spaced 5 pixels apart.

6.15. Add commands to save the values separately for individual neutrophils in the ventral fin (line 68 in **Supplementary File 3**).

6.16. Include the calculation of the mean neutrophil contrast value from all CHT neutrophils the same way as for neutrophils at the wound (lines 72-119 in Supplementary file 3). For CHT neutrophils, call the function 'cht_data.m' (line 77 in **Supplementary File 4**).

6.17. Include the normalization of the contrast value of individual neutrophils at the wound to the mean contrast of CHT neutrophils calculated above in step 6.16 (i.e., division) (line 122 in **Supplementary File 3**). This gives a normalized contrast that reflects how 'dotty' the appearance of receptor is in individual responding cells relative to control non-responding cells (**Figure 3** and **Figure 4**).

6.18. Run the script (**Supplementary File 3**) by clicking the run symbol in the software.

6.19. Repeat all steps for different conditions.

6.20. Use statistical software (see **Table of Materials**) to import the results for the different conditions by creating a column table, plot the results and perform statistical test to check significance of difference between the mean values.

NOTE: The codes for the analysis can also be found in GitHub at <https://github.com/LeukocyteMotionAndDynamics/ReceptorTraffic>

7. Chemokine response assays in early embryos

NOTE: This is an optional side experiment that allows testing of receptor distribution changes in response to a candidate chemokine and is independent from the experiments described above concerning neutrophil expression of the receptor constructs. Differences in ligand-induced trafficking between receptors are difficult to establish with this technique as the ligand levels are saturating¹⁴. However, if one sees ligand-internalization of a receptor in this system, this can be an indication that the ligand is recognized by the receptor in instances where the ligand identity is unclear. This is useful, because expression of chemokine receptors in established cell lines such as HEK293T cells¹⁴ can be cumbersome.

7.1. Set up a cross of wild type fish (e.g., AB) and collect eggs the next morning shortly after lifting the separators (as described above).

7.2. Inject 100 pg of fluorescently tagged receptor mRNA (e.g., Cxcr1-FT), together with 100 pg of mRNA for a membrane marker (e.g., membrane CFP). Include in the mixture varying doses of mRNA for chemokine ligand.

NOTE: As an indication 150 pg Cxcl8a mRNA gave prominent internalization of fluorescent Cxcr1-FT (see **Figure 5**).

7.3. Rinse embryos with E3 medium and incubate at 28°C.

7.4. At about 7 hpf, test expression of the mRNA on a fluorescent dissecting scope and select the embryos to image.

7.5. Prepare 0.8 % LMP agarose in advance and keep in glass tube in a heatblock at 60 °C. Use a glass pipette to manipulate the embryos. Gently dechorionate embryos using a pair of forceps in each hand.

7.6. Aspirate an individual dechorionated embryo with the glass pipette ensuring no bubbles are at the tip. Gently release the embryo into the tube of agarose allowing it to sink into the tube.

7.7. Aspirate the embryo from the agarose tube, collecting some liquid agarose along the way. Gently release embryo onto the center of a glass-bottomed imaging dish. Quickly rotate embryo so that the animal pole is facing the bottom of the dish (this side must be closest to the objective when using an inverted microscope).

NOTE: One may need to readjust the orientation of embryos while the agarose is still setting.

7.8. After the agarose is set, supplement with 2 mL of E3 medium.

NOTE: The embryos at this stage are very fragile in comparison to larvae and it takes some practice to dechorionate and mount. It is important to aspirate and release as gently as possible, to avoid embryo rupture.

7.9. Repeat the process aiming to load 3-5 embryos per dish.

7.10. Image embryos on an inverted confocal microscope (see **Table of Materials**). Use a 40x/1.3 NA oil objective to obtain high enough resolution. Visualize mCFP, sfGFP, and tagRFP with 405, 488, and 552 nm, respectively, on the Leica scope. Adjust filters and settings to have high contrast while avoiding saturation and minimize leak through between the channels.

7.11. Repeat the mounting and imaging for different conditions.

REPRESENTATIVE RESULTS:

Ventral fin wounding is followed by rapid neutrophil mobilization from the CHT into the ventral fin and clustering at the wound margin, within 30-60 min (**Figure 1**). We visualized the distribution of two chemokine receptors, Cxcr1 and Cxcr2, which are expressed by zebrafish neutrophils²⁴ and recognize Cxcl8a and Cxcl8b¹⁴, using spinning-disk confocal microscopy. We generated two corresponding transgenic lines, Tg(*lyz:Cxcr1-FT*) and Tg(*lyz:Cxcr2-FT*), in which neutrophils express a fluorescent timer (FT) construct of the receptor, i.e. a fusion with a tandem of sfGFP and tagRFP (**Figure 2** and reference¹⁴). The use of the two fluorophores was intended to allow monitoring of a broad range of receptor fates and provide estimates of protein turnover

time at the plasma membrane, as newly synthesized receptors would fluoresce in green and progressively become red as they age^{8,14}. However, these receptors were found to have fast constitutive turnover at the neutrophil plasma membrane and that the residence time was shorter than the maturation time of tagRFP, with sfGFP showing membrane localisation and tagRFP showing vesicular localization at steady state (**Supplementary Video 1** and ref¹⁴). Therefore, we focused on the distribution of sfGFP to monitor ligand-induced internalization at sites of tissue damage. The pattern of receptor distribution was quantified using the contrast metric, which reports differences in intensity between neighboring pixels. The rationale is that when the receptor distribution is membranous and smooth, the contrast value is low. When the receptor distribution is vesicular and more punctate, then the contrast value is high (**Figure 3**).

An alternative method is to quantify the ratio of receptor levels (sfGFP intensity) over the levels of a control membrane marker e.g. membrane CFP (mCFP) (**Figure 3**). Both methods could detect receptor internalization, as indicated by more vesicular receptor distribution pattern globally in the cell (higher contrast value) or lower receptor levels at the membrane (lower sfGFP/mCFP ratio). However, the contrast metric could also detect receptor internalization in neutrophil clusters at the wound, in which membrane segmentation was less accurate and not applicable (**Figure 3**). Using this metric, we were able to quantify visible differences between Cxcr1 and Cxcr2 trafficking in neutrophils at wounds (**Figure 4** and **Supplementary Video 2**). Cxcr1-FT internalized in cells located at the wound whereas Cxcr2-FT remained membranous in neutrophils at the wound (**Figure 4A-C**, **Supplementary Video 2** and **Supplementary Video 3**). Suppression of Cxcl8a and Cxcl8b, through morpholino treatment, differentially affected Cxcr1-FT internalization at wounds (**Figure 4C,D**). To further validate that Cxcr1-FT responds to Cxcl8a, we performed chemokine response assays in early embryos. We found that Cxcr1-FT markedly internalized in embryos in which Cxcl8a was co-expressed (**Figure 5**). Altogether these results indicate that the described methods can be deployed to measure chemokine-induced receptor internalization in neutrophils and establish the identity of the ligand mediating these effects.

FIGURE AND TABLE LEGENDS:

Figure 1: Neutrophil migration to ventral fin wounds. (A) (Left) Cartoon of 3 dpf larva showing the location of the caudal hematopoietic tissue (CHT), the venous circulation (VC, blue), the ventral fin (VF) and the wound site. (Right) Cartoon depicting the area of the wound (W) with neutrophils getting mobilized from the CHT and clustering at the wound. The caudal vein plexus (CVP) of the CHT tissue is drawn in blue. (B) Bright field image (left) and confocal projection (right) showing the ventral fin wound and the distribution of neutrophils in Tg(*mpx*:GFP) larvae at 2 h post-wounding. Dashed lines show VF and CHT outlines. Scale bar = 25 μ m. Cartoon and fluorescent image modified from ref.¹⁴ (<http://creativecommons.org/licenses/by/4.0/>).

Figure 2: Live imaging of chemokine receptor trafficking in neutrophils. (A) Constructs used for neutrophil-specific transgenic expression of Cxcr1-FT (Fluorescent Timer) and Cxcr2-FT. Confocal projections of neutrophils in the head of a 3 dpf transgenic larva (Tg(*lyz*:Cxcr1-FT), top; Tg(*lyz*:Cxcr2-FT), bottom) showing tRFP (magenta) and sfGFP (green) channels. Scale bar = 20 μ m. (B) Anatomical scheme of 3 dpf larva as in Figure 1A. Below the larva are schemes depicting

the area of the wound (W) with neutrophils getting mobilized from the CHT (top) or performing chemotaxis upon entering the ventral fin (bottom). Dashed square indicates area imaged in snapshots on the right. **(C)** Neutrophils in Tg(*lyz:Cxcr1-FT*) larvae (sfGFP is shown) upon mobilization from the CHT (top panels) or chemotaxis towards the wound (bottom panels). Arrows show the same cells over time. Time points on the right image are minutes elapsed after image on the left. Scale bar = 10 μ m. **(D)** Schematic representation of experimental approach for live imaging of chemokine receptor trafficking. Panels A-C modified from ref.¹⁴ (<http://creativecommons.org/licenses/by/4.0/>).

Figure 3: Quantification examples of receptor dynamics. Single (blue) or clustered neutrophils (green) at wounds or non-mobilized neutrophils in the CHT (red, orange) were segmented and analyzed by different methods to compare results. The same example cells shown were analyzed with two methods to relate what is seen in the image with the range of values extracted. **(A)** The surface of the selected, example cells were segmented based on contour definition in the sfGFP channel. **(B)** Contrast was computed from the example cells shown in A. **(C)** The membrane of the selected, example cells were segmented based on contour definition in the CFP channel. Ratiometric analysis of sfGFP/CFP followed. **(D)** The ratio of sfGFP/CFP was computed on the example cells shown in c. Error bars represent S.E.M. from individual cells, in cases of $n > 1$, values here were not used for statistical analysis but merely to exemplify measurements obtained with the different quantification methods. Scale bar = 10 μ m. Figure modified from ref.¹⁴ (<http://creativecommons.org/licenses/by/4.0/>).

Figure 4: Differential dynamics of Cxcr1 and Cxcr2 in response to wounding. **(A)** Confocal projection of neutrophils in Tg(*lyz:Cxcr1-FT*) or Tg(*lyz:Cxcr2-FT*) larvae at the wound at 80 min post-wounding (sf GFP channel shown). Scale bar = 10 μ m. mpw = minutes post-wounding. **(B)** Magnified Cxcr1-FT neutrophil (left) and Cxcr2-FT (right) at the wound. Green receptor is shown in grey. Scale bar = 5 μ m. **(C)** Normalized contrast (contrast per individual neutrophil normalized to the mean contrast of non-mobilized cells in the CHT). *cxcl8a* refers to injection of a splice-blocking together with a translation-blocking morpholino for *cxcl8a*. *cxcl8b* refers to injection with a splice-blocking morpholino for *cxcl8b*. For Tg(*lyz:Cxcr1-FT*): $n=24$ cells (CHT), $n=47$ cells (wound) from 8 larvae. For Tg(*lyz:Cxcr1-FT*) with morpholinos: $n=28$ cells (Cxcl8a-MO) from 5 larvae, $n=16$ cells (Cxcl8b-MO) from 5 larvae. For Tg(*lyz:Cxcr2-FT*): $n=10$ cells (CHT) and $n=20$ cells (wound) from 3 larvae. Data were pooled from independent larvae acquired in 1-5 imaging sessions. Kruskal-Wallis test with Dunn's multiple comparisons test for Tg(*lyz:Cxcr1-FT*), two-tailed unpaired Mann-Whitney test for Tg(*lyz:Cxcr2-FT*). **(D)** Confocal projection of neutrophils in Tg(*lyz:Cxcr1-FT*) transgenic larvae treated with *cxcl8a* morpholino (MO) (left) and *cxcl8b* MO (right) responding to fin wounds (sfGFP channel shown in green). Snapshot taken at timepoints of equivalent neutrophil accumulation (85 mpw in left image and 45 mpw in right image). Scale bar = 10 μ m. Figure modified from ref.¹⁴ (<http://creativecommons.org/licenses/by/4.0/>).

Figure 5: Chemokine response assay in early embryos. Laser-scanning confocal slices of gastrulating embryos showing expression and distribution of Cxcr1-FT. 100 pg of Cxcr1-FT mRNA was injected into one cell-stage eggs with or without 150 pg Cxcl8a mRNA. Green and red receptors are shown in separate channels. Control membrane CFP marker (mCFP) is shown in the

cyan channel. Scale bar = 20 μ m. Figure modified from ref.¹⁴
(<http://creativecommons.org/licenses/by/4.0/>).

Supplementary Movie 1: Transgenic neutrophils in the head of a Tg(*lyz:Cxcr1-FT*) (left) and Tg(*lyz:Cxcr2-FT*) (right) larva at 3 dpf. sfGFP(green), tagRFP (magenta). Frame interval is 30 sec and frame rate is 5 fps. Scale bar = 20 μ m. Video originates from ref.¹⁴ (<http://creativecommons.org/licenses/by/4.0/>).

Supplementary Movie 2: Neutrophils in Tg(*lyz:Cxcr1-FT*) (left) and Tg(*lyz:Cxcr2-FT*) (right) transgenic larvae responding to fin wounds. Movie starts within 10 mpw and lasts 60 min. sfGFP (green), tagRFP (magenta). Frame interval is 30 sec and frame rate is 10 fps. CHT = caudal hematopoietic tissue. VF = ventral fin. Scale bar = 25 μ m. Video originates from ref.¹⁴ (<http://creativecommons.org/licenses/by/4.0/>).

Supplementary Movie 3. Additional examples of neutrophils from a wounded Tg(*lyz:Cxcr1-FT*) transgenic larva (different larva to that shown in Video 2), acquired at higher resolution, showing receptor internalization (sfGFP channel shown in green) upon mobilization in the CHT or upon entry and chemotaxis in the ventral fin. Frame interval is 30 sec and frame rate is 10 fps. Scale bar = 10 μ m. Video originates from ref.¹⁴ (<http://creativecommons.org/licenses/by/4.0/>).

DISCUSSION:

The method described allows live imaging of receptor dynamics in response to endogenous ligands in situ during an inflammatory response to tissue damage. The use of Cxcr1/Cxcr2 neutrophil reporters could be expanded to other physiological settings, such as infection, tumor models or other types of tissue damage^{14,25–27}. In addition, transgenic rescue lines, in which the endogenous receptor is suppressed and rescued by an exogenous mutant receptor, could provide useful tools to dissect the importance of specific neutrophil migration patterns in immune responses. For example, Cxcr1 receptor mutants that have impaired desensitization cause more prominent neutrophil clustering at inflammatory sites¹⁴. This gain of function phenotype could be used to understand the role of neutrophil congregation in different physiological processes, e.g., wound repair, infectious disease, or tumor evolution, and complement receptor knockdown/knockout experiments. The methodology also provides a basis to expand the range of available reporters. The choice of fluorescent reporter is important to consider and depends on the biological question. We found that the constitutive turnover of these chemokine receptors in neutrophils was high, in comparison to epithelial cells, and that reporters with fast maturation (e.g., sfGFP) were required to report membrane levels at steady state and resolve differences upon neutrophil stimulation^{8,14}. Thus, membrane ratios of sfGFP/tagRFP are not applicable for measuring ligand-induced internalization in this cell type, but the pattern of tagRFP allows tracking of the intracellular fates of the receptor, which could be useful in some studies. We also found that the more concentrated intracellular signal of tagRFP is useful for screening individual larvae. An alternative approach for measuring receptor levels at the plasma membrane would be to co-express a fluorescent membrane marker in neutrophils either in the same transgene⁹ or in an independent transgene¹⁴. In the former scenario the transgene would provide an additional

means for screening the fish and expression levels would be comparable between the marker and the receptor. The latter approach would be more modular, in that a zebrafish line with a receptor reporter could be combined with different reporter lines. In either case, it is worth noting that membrane quantification of the receptor levels is challenging in clustered neutrophils (see below). Finally, we note that a possible extension of this protocol would be to follow up the live imaging by immunohistochemistry for more detailed localization analyses.

The Tol2 transgenesis system is well established⁷ and the lysozyme C promoter has been used extensively for neutrophil expression^{11,15}. The transgenesis approach is, therefore, relatively straightforward and the expression level achieved with this promoter is high enough to provide sufficient contrast for analysis of receptor dynamics. A possible limitation is that the expression level does not recapitulate endogenous receptor expression levels. New CRISPR technologies could be deployed to establish knock-in lines for receptors of particular interest²⁸. These technologies are still cumbersome and may not guarantee the required expression levels for subcellular imaging, but their successful development would be an important breakthrough for understanding endogenous signaling dynamics. Functional validations are important for interpreting data with transgenic receptor constructs. For example, ligand recognition assays can be used to establish that the fluorescent fusion protein is functional and rescue of knockout phenotypes could be used to establish that the transgenic neutrophil expression levels are compatible with functionality¹⁴. Finally, a more direct way to validate the receptor fusion would be to utilize an in vitro functional assay with labelled receptor alongside non-labeled versions¹⁴.

The quantification approach addresses specific difficulties in accurate membrane segmentation in neutrophils in vivo. In cells of epithelial nature, quantification of receptor levels can be executed automatically by normalizing membrane receptor levels to a control marker, which can be expressed in tandem or separately⁹. Indeed, we have applied such an approach, when using the ligand-recognition assay in gastrulating embryos¹⁴. However, neutrophils undergo complex, rapid changes in cell shape in vivo, making the membrane segmentation difficult both in 2D and 3D¹⁴. This is even more challenging when neutrophils cluster, which occurs in many physiological settings²⁹. The contrast metric overcomes this limitation as it does not require membrane segmentation but instead reflects the overall state of receptor distribution in the cell (membranous/smooth vs vesicular/dotty). It is important to note that contrast metric can be affected by the overall contrast of the image, so normalization of individual cell values to an internal reference is required to account for variability of signal in different embryos/samples. For example, we used the mean cell contrast value of non-responsive neutrophils in the CHT (i.e., neutrophils that remain stationary and do not migrate into the ventral fin)¹⁴. An additional possibility would be to normalize with contrast values of a control marker in the same cell. This would provide a solution when an internal reference of non-responding cells is not available and may likely resolve finer quantitative differences in receptor dynamics between different conditions.

The location of imaging is another variable to consider. The reason for choosing the ventral fin wound here, as opposed to the more commonly used tail fin wound model^{16,30}, is because the site of wounding is nearby the site of neutrophil residence/migratory origin. This accelerates the

617 timeline of the assay, as it takes relatively little time for neutrophils to arrive. Additionally, it
618 provides the opportunity to capture cell behavior both at the migration origin (CHT) and the
619 target location of interest (wound). This is relevant here, because the spatial and temporal
620 resolution required for subcellular imaging is difficult to combine with a large field of view or
621 multi-position scanning. Thus, the ventral fin wound assay permits tracking of the evolution of
622 the migratory response from the migration origin and simultaneous capturing of unspecific
623 receptor fluctuations in cells that do not respond. As mentioned above, the latter is useful for
624 quantification purposes as it provides an internal reference for unspecific dynamics. In other
625 systems, it may not be possible to have such an internal reference, in which case the contrast
626 values of a co-expressed membrane marker would provide an alternative control.

627
628 In summary, we anticipate that the methodology is applicable to other systems and can be
629 deployed for a variety of purposes. For example, the same reporters could be utilized in other
630 inflammatory settings, such as infection settings or other disease models. The repertoire of
631 zebrafish receptor reporter lines could be expanded to other signaling receptors, to understand
632 signaling mechanisms or report ligand dynamics in vivo. The approach can be combined with
633 knockdown/knockout techniques to interrogate the mechanistic basis of observed dynamics. For
634 example, perturbation of ligand expression can indicate the ligand dependency for observed
635 receptor dynamics. In the future, we envisage that the system could be further refined to
636 incorporate knock-in insertion of reporters. Ultimately, findings using this methodology would
637 provide novel insights valuable beyond the zebrafish community, given the conservation of these
638 signaling receptors in mammals and the relative challenge of conducting these studies in larger
639 organisms.

640 **ACKNOWLEDGMENTS:**

641 We thank Christine Holt and Bill Harris for help with confocal microscopy. We thank Darren
642 Gilmour for the fluorescent timer backbone constructs and Anna Huttenlocher for the Tol2-Lyz
643 backbone vector. We thank Steve Renshaw for the Tg(*mpx*:GFP)ⁱ¹¹⁴ line. This work was supported
644 by the MRC (MR/L019523/1), the Wellcome Trust [204845/Z/16/Z]; Isaac Newton Trust
645 [12.21(a)i] and an Isaac Newton Trust grant 19.23(n). C. C was supported by an MRC DTP
646 studentship and partly by the Wellcome Trust [204845/Z/16/Z]; Isaac Newton Trust [12.21(a)i]
647 grant. H.W. was supported by an MRC DTP Studentship. H.P. was supported by a Wellcome Trust
648 PhD grant (105391/Z/14/Z) and partly by a Wellcome Trust [204845/Z/16/Z]; Isaac Newton Trust
649 [12.21(a)i] grant and the MRC (MR/L019523/1).

650 **DISCLOSURES:**

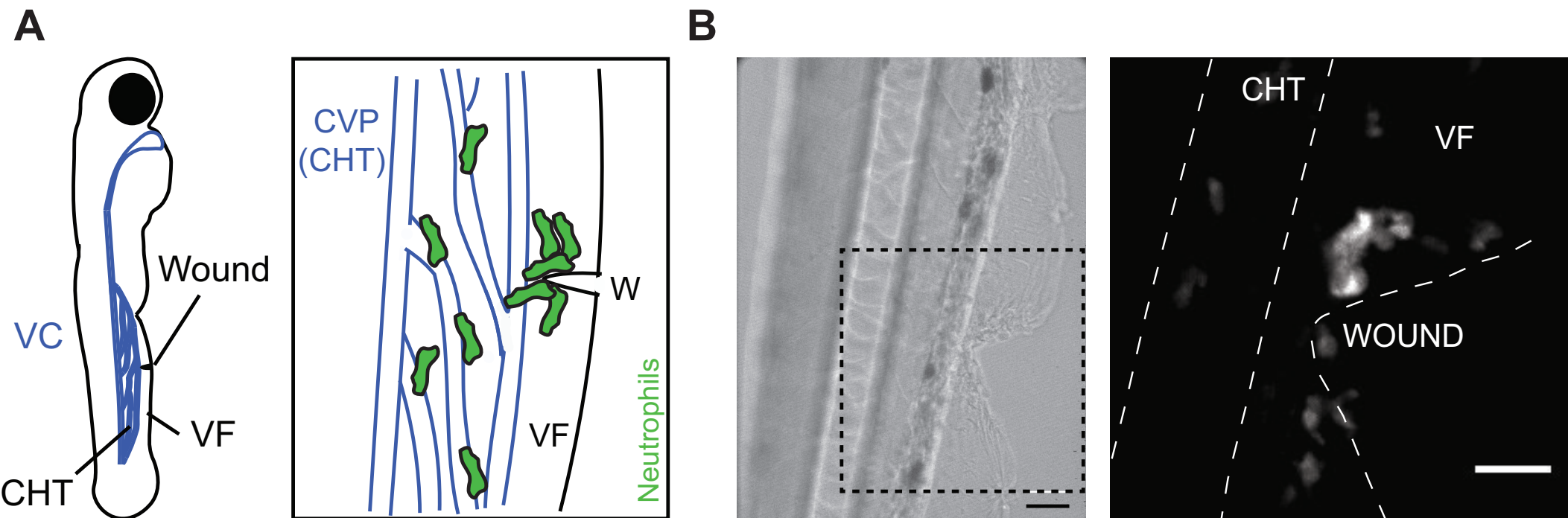
651 The authors declare no conflict of interest

652 **REFERENCES:**

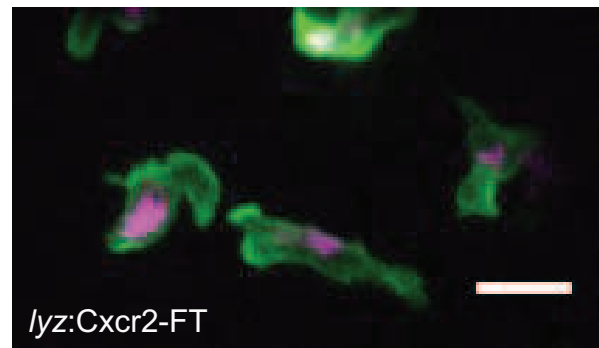
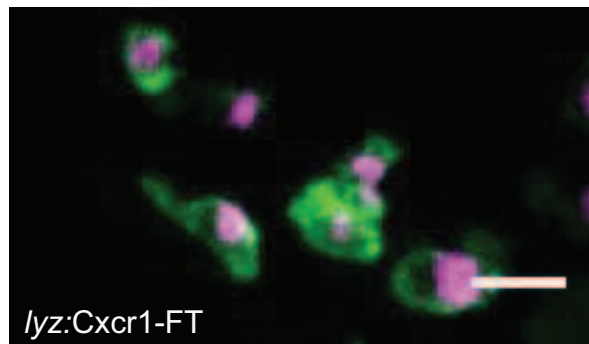
- 653 1. Rot, A., von Andrian, U. H. Chemokines in innate and adaptive host defense: basic
654 chemokinese grammar for immune cells. *Annual Review of Immunology*. **22**, 891–928 (2004).
- 655 2. Cotton, M., Claing, A. G protein-coupled receptors stimulation and the control of cell
656 migration. *Cellular Signalling*. **21** (7), 1045–1053 (2009).

3. Liu, X. et al. Bidirectional regulation of neutrophil migration by mitogen-activated protein kinases. *Nature Immunology*. **13** (5), 457–464 (2012).
4. Wen, X., Jin, T., Xu, X. Imaging G Protein-coupled Receptor-mediated Chemotaxis and its Signaling Events in Neutrophil-like HL60 Cells. *Journal of Visualized Experiments*. (115), e54511 (2016).
5. Arnon, T. I. et al. GRK2-dependent S1PR1 desensitization is required for lymphocytes to overcome their attraction to blood. *Science (New York, N.Y.)*. **333** (6051), 1898–1903 (2011).
6. Jung, H., Mithal, D. S., Park, J. E., Miller, R. J. Localized CCR2 Activation in the Bone Marrow Niche Mobilizes Monocytes by Desensitizing CXCR4. *PloS One*. **10** (6), e0128387 (2015).
7. Kwan, K. M. et al. The Tol2kit: a multisite gateway-based construction kit for Tol2 transposon transgenesis constructs. *Developmental Dynamics: An Official Publication of the American Association of Anatomists*. **236** (11), 3088–3099 (2007).
8. Donà, E. et al. Directional tissue migration through a self-generated chemokine gradient. *Nature*. **503** (7475), 285–289 (2013).
9. Venkiteswaran, G. et al. Generation and dynamics of an endogenous, self-generated signaling gradient across a migrating tissue. *Cell*. **155** (3), 674–687 (2013).
10. Minina, S., Reichman-Fried, M., Raz, E. Control of receptor internalization, signaling level, and precise arrival at the target in guided cell migration. *Current Biology: CB*. **17** (13), 1164–1172 (2007).
11. Yoo, S. K. et al. The role of microtubules in neutrophil polarity and migration in live zebrafish. *Journal of Cell Science*. **125** (Pt 23), 5702–5710 (2012).
12. Yoo, S. K. et al. Differential regulation of protrusion and polarity by PI3K during neutrophil motility in live zebrafish. *Developmental Cell*. **18** (2), 226–236 (2010).
13. Buchan, K. D. et al. A transgenic zebrafish line for in vivo visualisation of neutrophil myeloperoxidase. *PLoS One*. **14** (4), e0215592 (2019).
14. Coombs, C. et al. Chemokine receptor trafficking coordinates neutrophil clustering and dispersal at wounds in zebrafish. *Nature Communications*. **10** (1), 5166 (2019).
15. Hall, C., Flores, M. V., Storm, T., Crosier, K., Crosier, P. The zebrafish lysozyme C promoter drives myeloid-specific expression in transgenic fish. *BMC Developmental Biology*. **7**, 42 (2007).
16. Renshaw, S.A. et al. A transgenic zebrafish model of neutrophilic inflammation. *Blood*. **108** (13), 3976–3978 (2006).
17. Khmelinskii, A. et al. Tandem fluorescent protein timers for in vivo analysis of protein dynamics. *Nature Biotechnology*. **30** (7), 708–714 (2012).
18. Westerfield M *The zebrafish book. A guide for the laboratory use of zebrafish (Brachydanio rerio)*. Eugene, Oregon. University of Oregon Press, Eugene. (2007).
19. Rosen, J. N., Sweeney, M. F., Mably, J. D. Microinjection of Zebrafish Embryos to Analyze Gene Function. *Journal of Visualized Experiments*. (25), 1115 (2009).
20. Detrich, H. W., Zon, L. I., Westerfield, M. *The Zebrafish: Genetics, Genomics and Informatics*. Elsevier. Burlington. (2004).
21. Le Guyader, D. et al. Origins and unconventional behavior of neutrophils in developing zebrafish. *Blood*. **111** (1), 132–141 (2008).
22. Chan, T. F., Vese, L. A. Active contours without edges. *IEEE Trans Image Process*. **10** (2), 266–277 (2001).

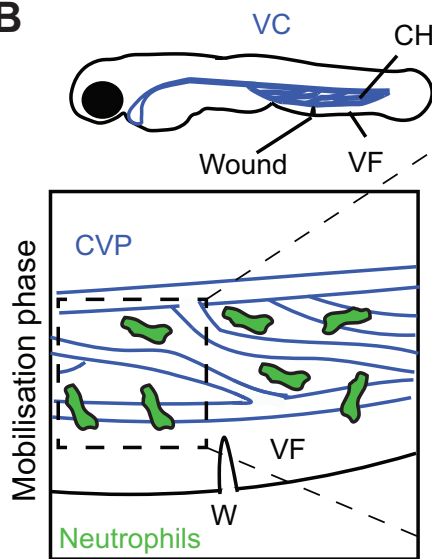
23. Haralick, R. M., Shanmugam, K., Dinstein textural features for image Classification. *SMC-3*. (6), 610–621 (1973).
24. Deng, Q. et al. Localized bacterial infection induces systemic activation of neutrophils through Cxcr2 signaling in zebrafish. *Journal of Leukocyte Biology*. **93** (5), 761–769 (2013).
25. Torraca, V., Mostowy, S. Zebrafish infection: From pathogenesis to cell biology. *Trends in Cell Biology*. **28** (2), 143–156 (2018).
26. Feng, Y., Santoriello, C., Mione, M., Hurlstone, A., Martin, P. Live imaging of innate immune cell sensing of transformed cells in zebrafish larvae: parallels between tumor initiation and wound inflammation. *PLoS Biology*. **8** (12), e1000562 (2010).
27. Poplimont, H. et al. Neutrophil swarming in damaged tissue is orchestrated by connexins and cooperative calcium alarm signals. *Current Biology*. S0960982220306692 (2020).
28. Cornet, C., Di Donato, V., Terriente, J. Combining Zebrafish and CRISPR/Cas9: Toward a more efficient drug discovery pipeline. *Frontiers in Pharmacology*. **9**, 703 (2018).
29. Kienle, K., Lämmermann, T. Neutrophil swarming: an essential process of the neutrophil tissue response. *Immunological Reviews*. **273** (1), 76–93 (2016).
30. Lisse, T. S., Brochu, E. A., Rieger, S. Capturing tissue repair in zebrafish larvae with time-lapse brightfield stereomicroscopy. *Journal of Visualized Experiments*. (95), e52654 (2015).



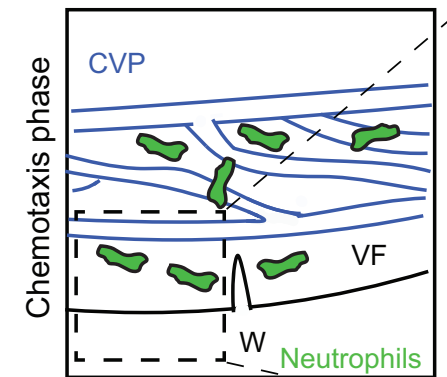
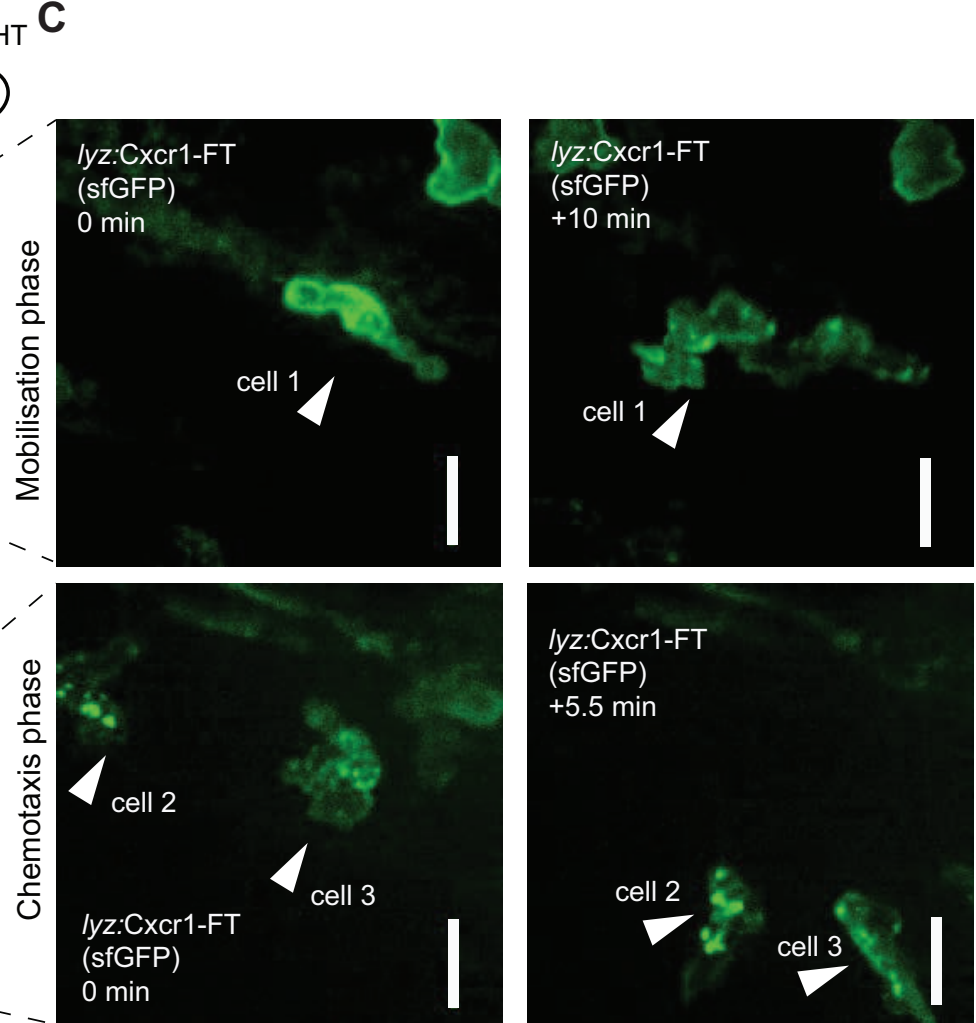
Transgenic constructs



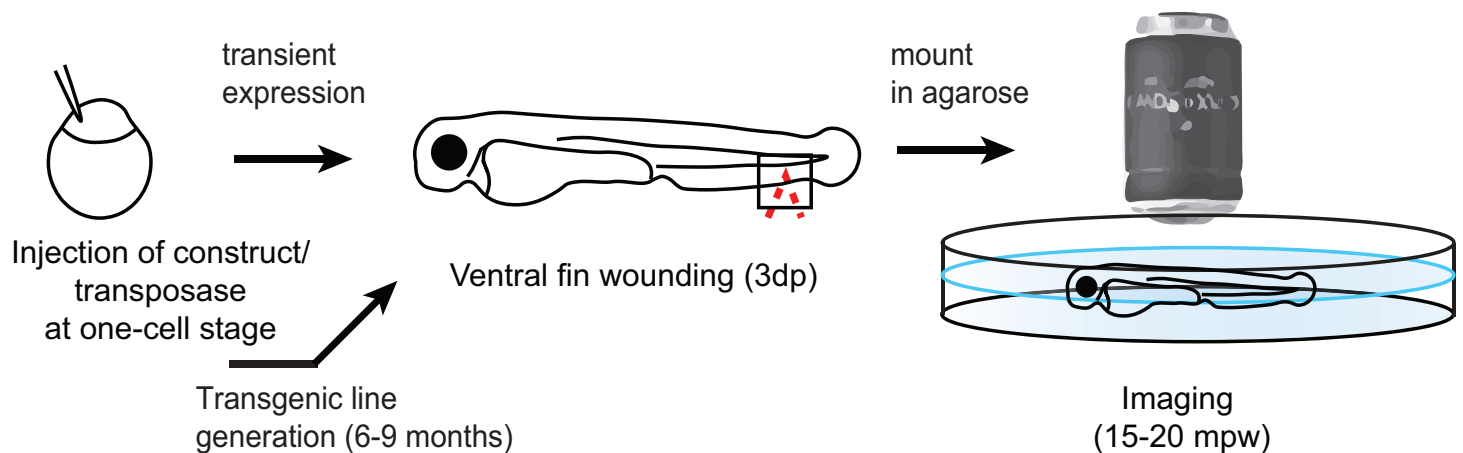
B

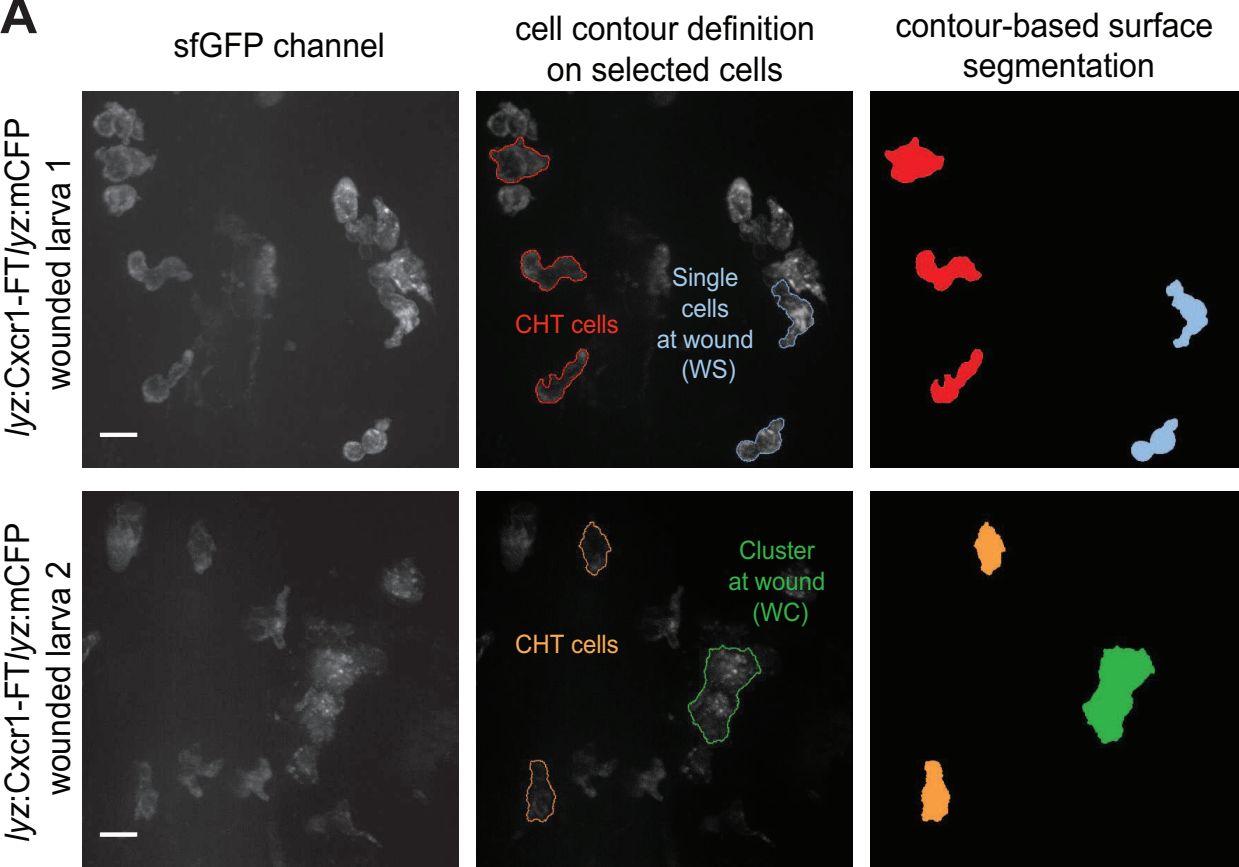


C

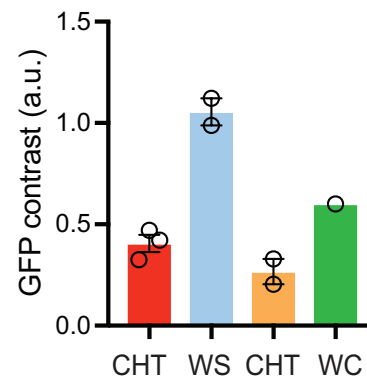
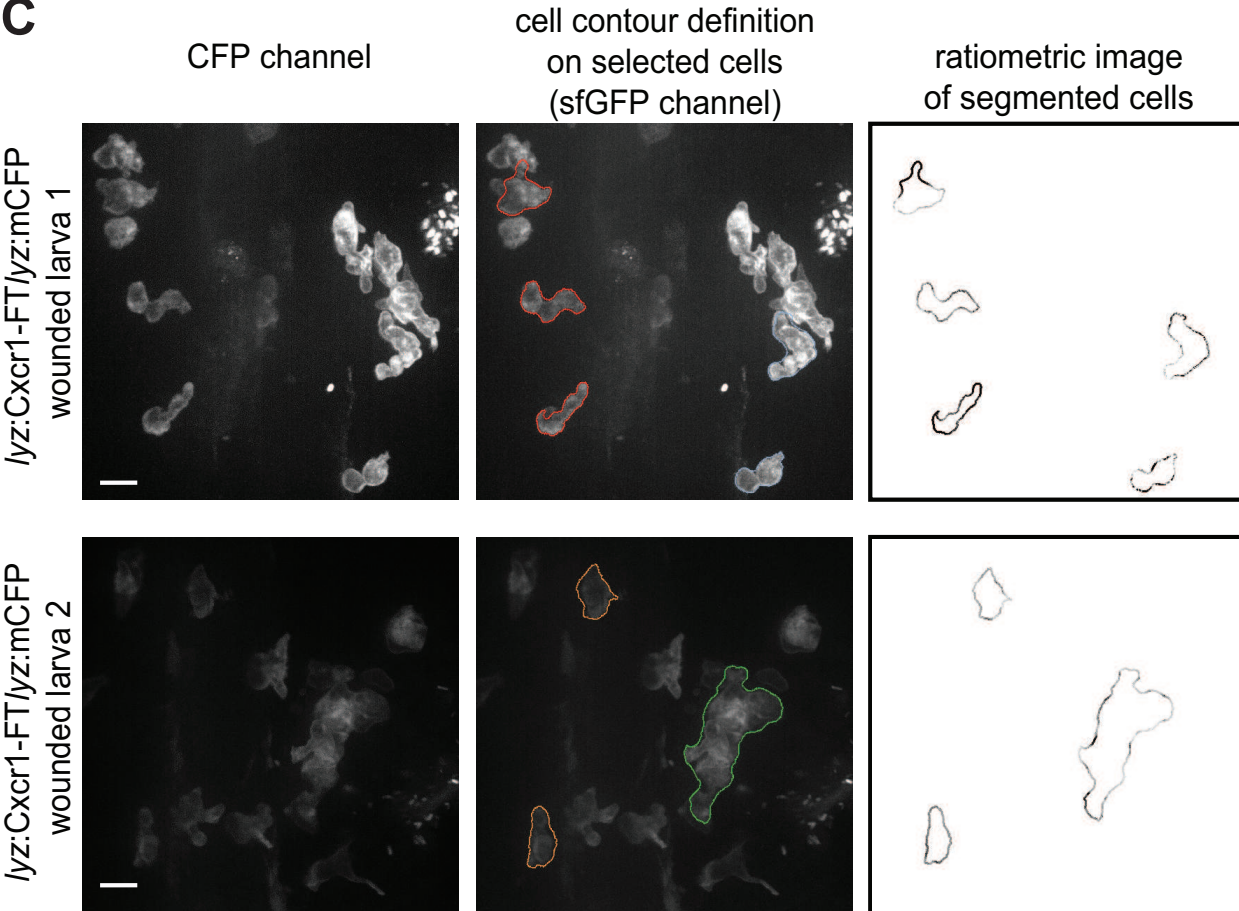


D

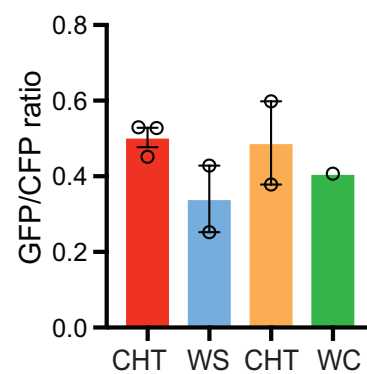


A

METHOD 1:
Surface
segmentation
followed by
contrast
computation
(chosen)

B**C**

METHOD 2:
Contour-based
membrane
segmentation
followed by
computation of
CFP/GFP ratio

D

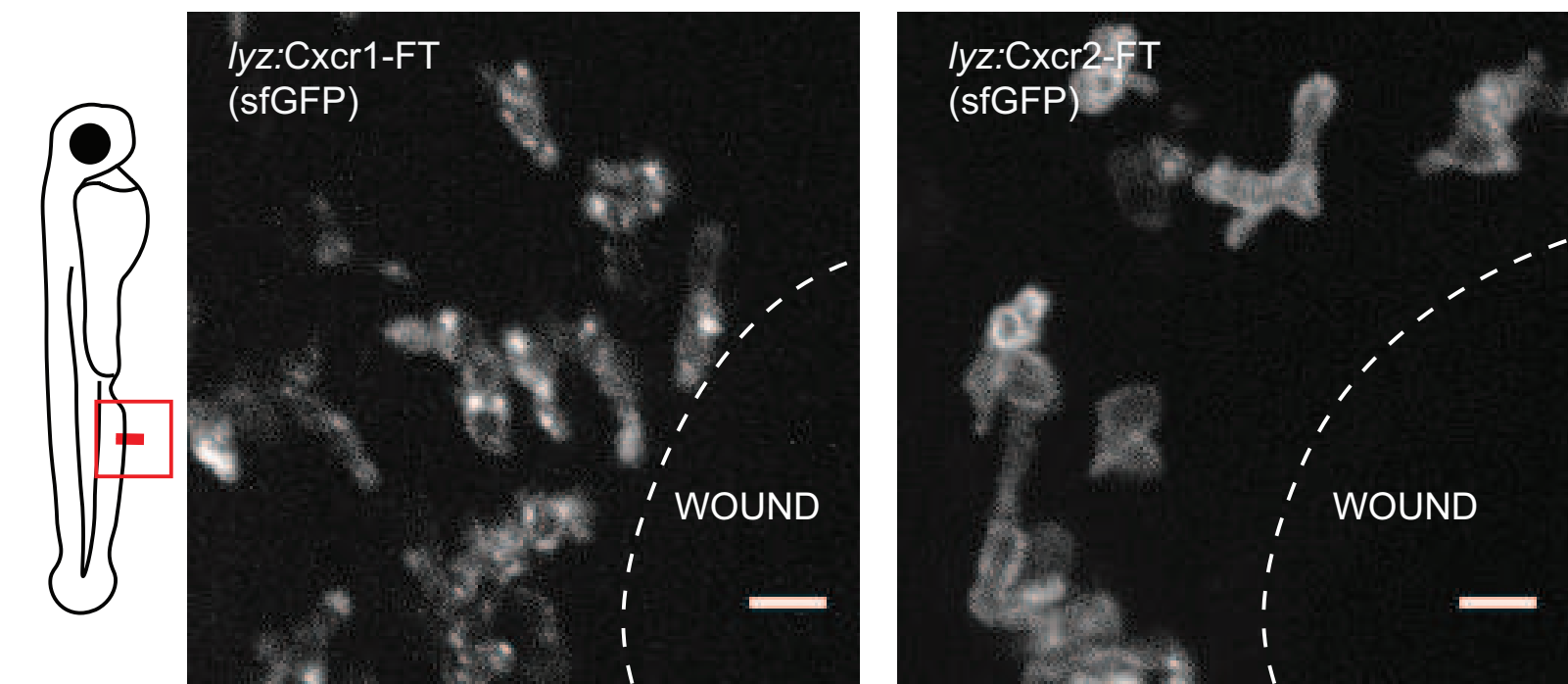
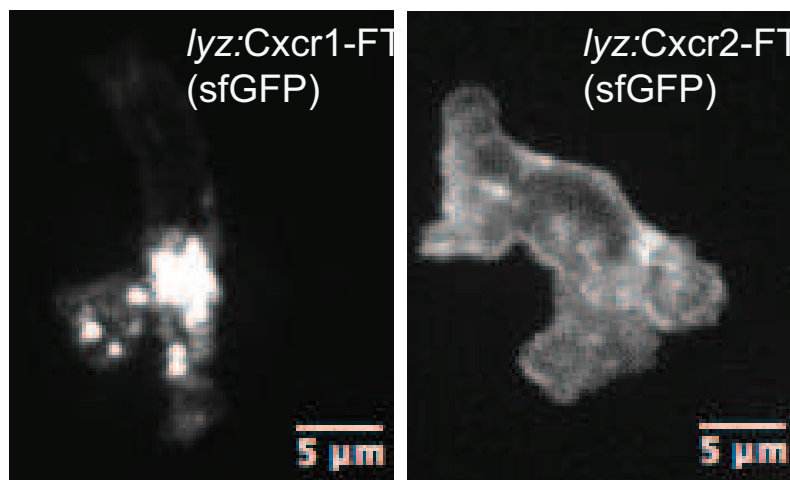
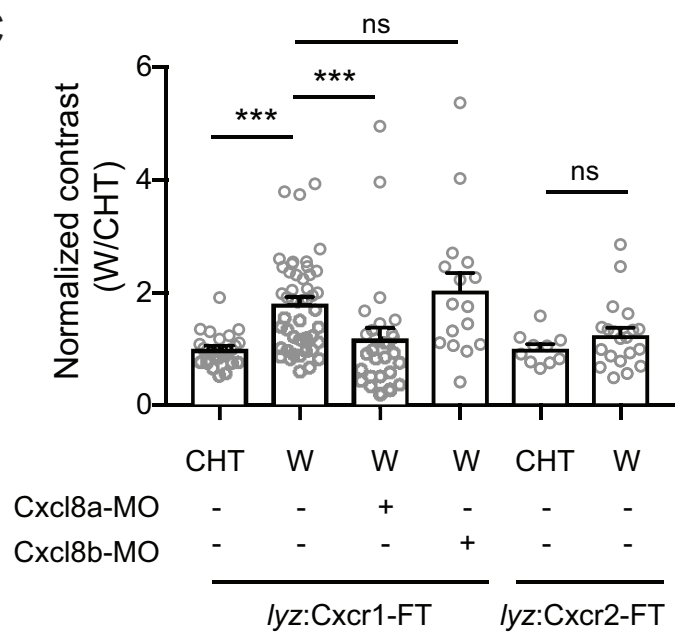
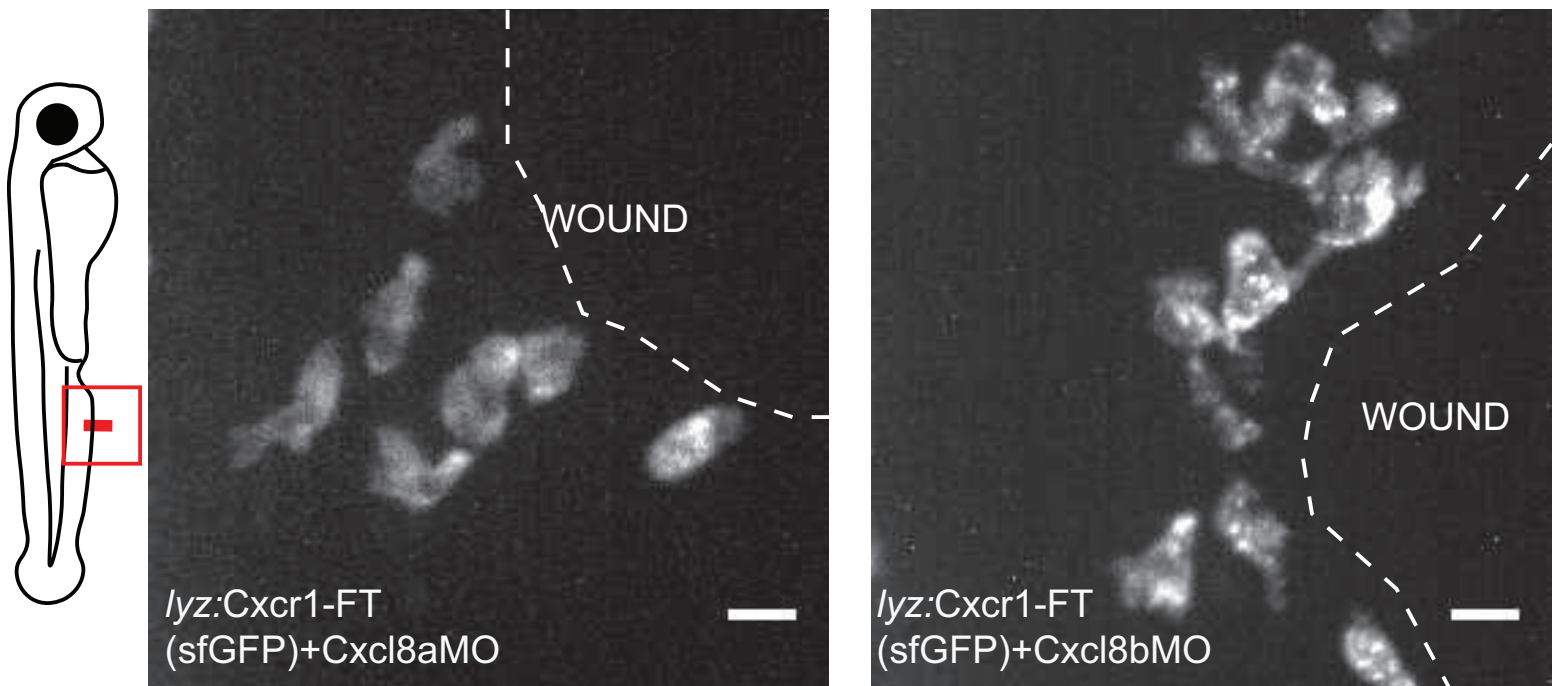
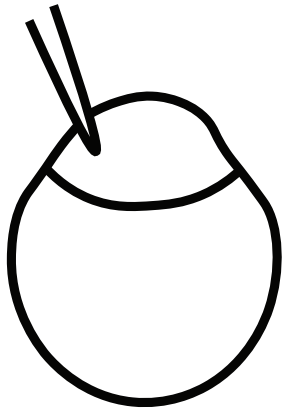
**B****C****D**

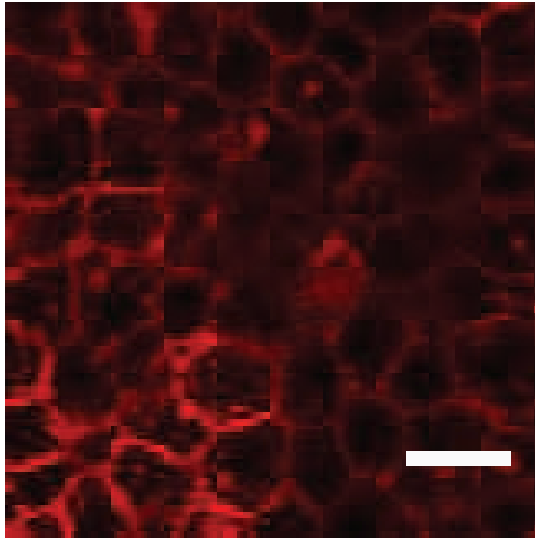
Figure 5

[Click here to access/download;Figure;Figure5.eps](#)

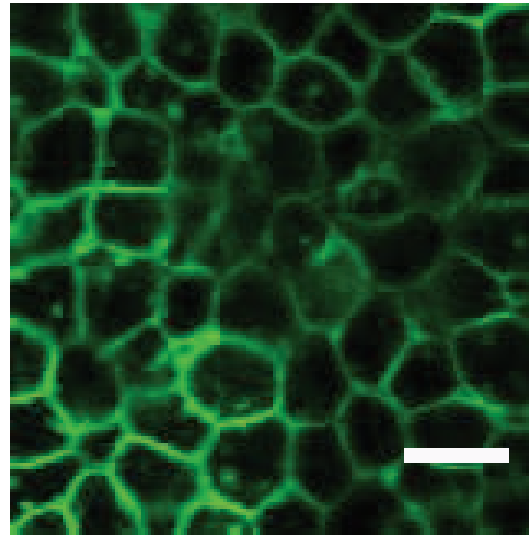
Receptor
+mCFP



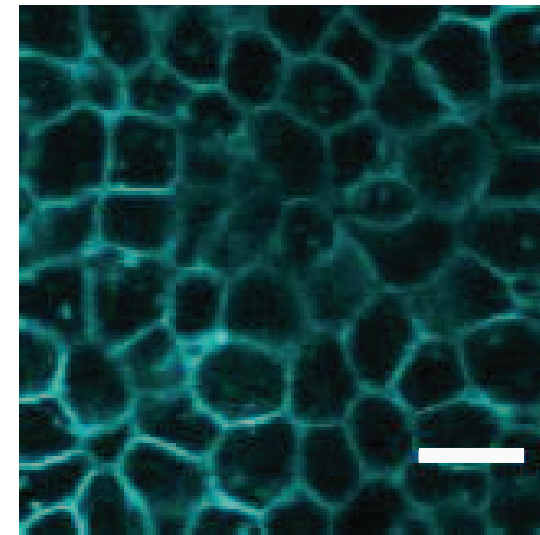
tagRFP



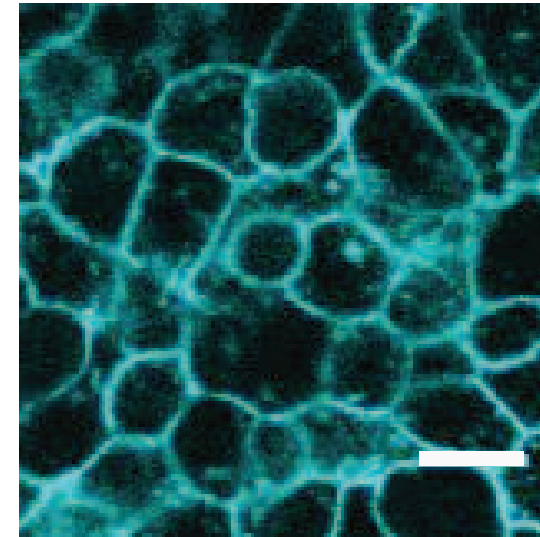
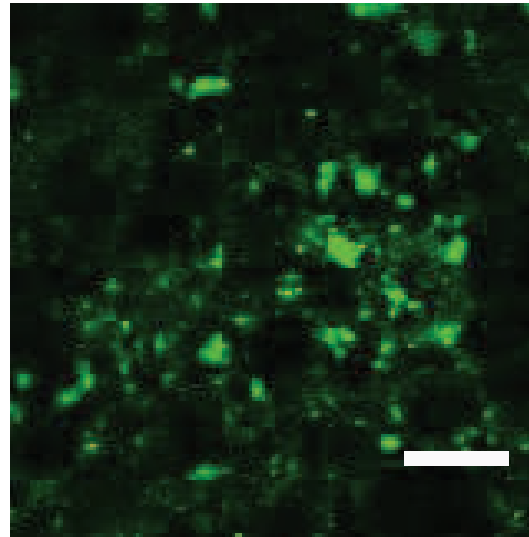
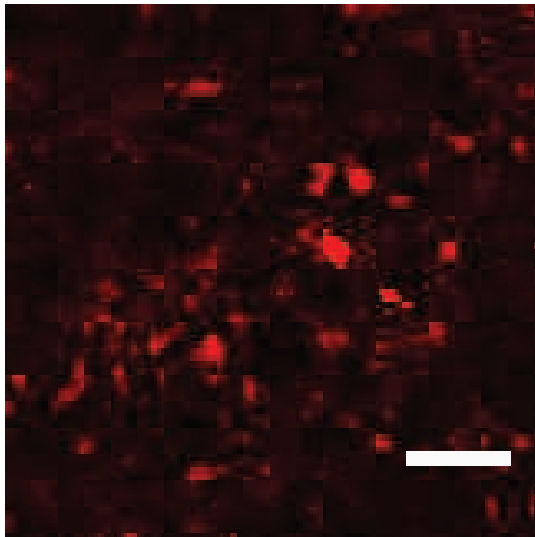
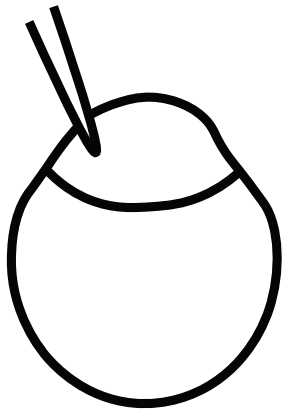
sfGFP



mCFP



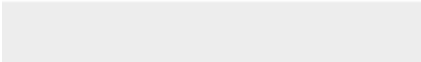

Receptor
+ mCFP
+ Cxcl8a

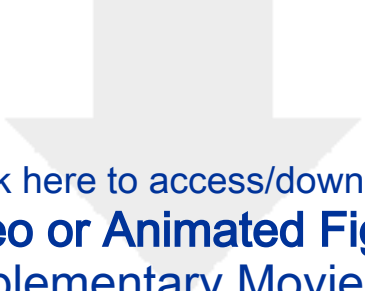


Cxcr1-FT

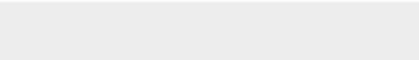



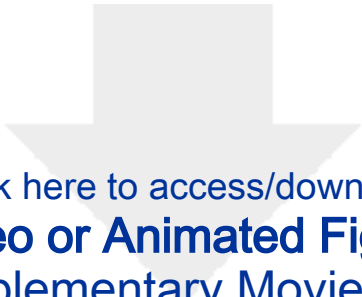
Click here to access/download
Video or Animated Figure
Supplementary Movie1.avi



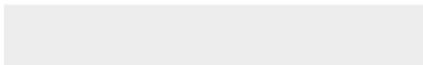



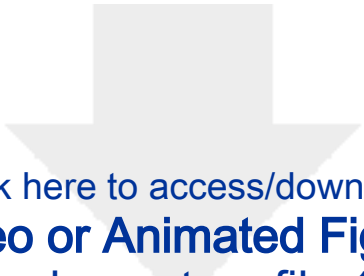
Click here to access/download
Video or Animated Figure
Supplementary Movie2.avi



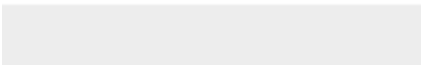



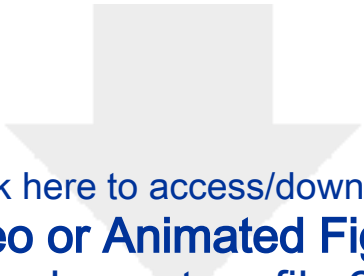
Click here to access/download
Video or Animated Figure
Supplementary Movie3.avi



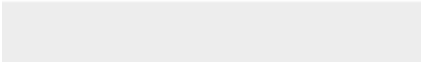



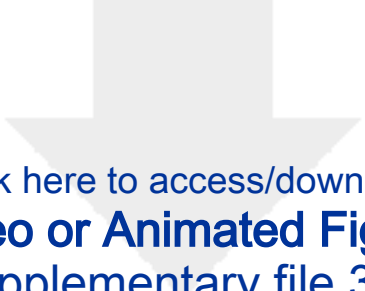
Click here to access/download
Video or Animated Figure
Supplementary file 1.m



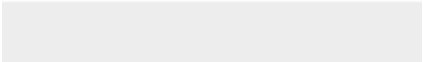



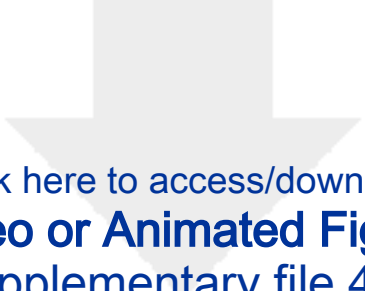
Click here to access/download
Video or Animated Figure
Supplementary file 2.m



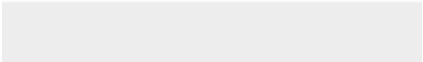



Click here to access/download
Video or Animated Figure
Supplementary file 3.m





Click here to access/download
Video or Animated Figure
Supplementary file 4.m



Name of Material/ Equipment	Company	Catalog Number	Comments/Description
1-phenyl-2-thiourea	Sigma-Aldrich	P7629-25G	
50mL CellStar Centrifuge Tube	Grenier Bio-One Limited	210270	
Clark capillary glass	Harvard Apparatus	30-0020	
	Scientific Laboratory		
Cleanline Thin Bleach	Supplies	CLE0301	
Dissecting scope	Nikon	SMZ645	
Dri Block heater	Techne	FDB02AD	
Fiji	National Institutes of Health, Bethesda, MD		
Forceps, Jewelers Dumont No. 5	Sigma-Aldrich	F6521	
Glass bottom microwell dishes	MatTek	P35G-1.5-14-C	
Glass pasteur pipette	Fisherbrand	11795098	
Invitrogen Ambion mMESSAGE			
mMACHINE SP6 Transcription Kit	Invitrogen	10391175	
Leica SP8 confocal microscope	Leica	N/A	
Low melting point agarose	Invitrogen	16520-100	
Magnetic stand	Narishige	GJ-1	
MATLAB	The MathWorks, Inc., Natick, MA		
Methylene blue	Sigma-Aldrich	M9140-25G	
MgSO ₄	Sigma-Aldrich	M-2643	
Microinjection system	Parker	Picospritzer III	
Microloader pipette tips	Eppendorf	5242956003	
Micromanipulator	Narishige	M-152	
		Flaming/Brown P-	
Micropipette Puller	Sutter Instrument Comp	97	
Microscope slide	Thermo-Scientific	J1800AMNZ	
PerkinElmer Spinning Disk			
UltraVIEW ERS, Olympus IX81			
spinng disk confocal microscope	Olympus	N/A	

Petri dish (120mm)	Grenier Bio-One Limited	632180
Phenol red	Sigma-Aldrich	P0290-100ML
Poly(A) Tailing Kit	Invitrogen	AM1350
Prism	GraphPad Software	
Small paintbrush	N/A	
Spectral Applied Research LMM5 laser module		N/A
Surgical Scalpel Blade No. 23	Swann-Morton	233-5528
Tricaine MS222	Sigma-Aldrich	E10521-50G
Volocity software		N/A
Yokogawa CSU10 spinning disc confocal scanner	Yokogawa	N/A

Petri dish (120mm Grenier

Small paintbrush

Heated stage

Fiji National Institutes of Health

MATLAB The MathWorks inc.

Prism GraphPad Software

Heatblock

Glass pipette

Microscope slide Any

50mL falcon tube any

Needle puller

Borosilicate glass Harvard Apparatus

Reviewers' comments:**Reviewer #1:**

Manuscript Summary:

This manuscript by Coombes et al., gives a detailed protocol for the findings recently described Nature Communications manuscript from the same group (Coombes et al., 2019). This protocol is very nicely detailed and gives a good in depth description of the process. This methods described need access to specific highend imaging equipment (eg a spinning disc microscope), and the methods described here are quite set-up specific, although efforts have been made to make it generically available to other systems. The introduction is quite brief but the method is well discussed in the discussion

Major Concerns:

-The introduction mentions mammalian systems (in the paragraph on line 55), but doesn't go into much detail and is not referenced at all. A bit more information in this paragraph, including some references for comparison to your zebrafish methods would be useful to the reader.

[We added specific examples of approaches used in vitro and in vivo in mammalian systems with corresponding references and also more references regarding relevant prior zebrafish work.](#)

- Do you look at mendelian ratios of your F1 crosses to assess whether you have a single insertion allele for each line? This would potentially be important as multiple insertions could lead to brighter lines/differential expression that might change the levels between founders. This is worth outlining in your methods.

[This is a good suggestion, we added a note in the relevant step.](#)

- Much is made in the introduction and discussion about the chemokine ligands being endogenous, but it is not specifically pointed out that driving the chemokine receptors is an overexpression system using the lyz promoter in the intro (this is touched on in the discussion on line 377). This limitation is important to consider when looking at quantification of receptor/ligand dynamics and should be pointed out more clearly early on.

[We added a note in the first step where the construct is mentioned, to point this out earlier.](#)

- The figures included are very nice, but don't really allude to the method. This is a complex experiment, and a brief timeline/flowchart would be useful for the reader. A figure showing the constructs used would be a very useful addition.

[We have added the construct and representative images as well as a flow chart in new figure 2.](#)

Minor Concerns:

- Line 100: "Lift barriers from fish tanks at around 9 AM". While it's acknowledged that this may vary between aquaria it may be useful to mention that this is shortly after the lights come on.

[We amended this](#)

-Line 105: NOTE: "In our experience, the expression results are more consistent when injecting inside the cell and discarding the injections that may not be clearly inside the cell." This is a useful note. Please can you also comment whether only one cell stage embryos are injected, or whether 2-16 cell stage would also work

[We added a relevant note.](#)

- Line 110: "It is important to check the injected eggs later in the day and remove unfertilised or dead eggs." I agree with the importance of this, but please can you add why (ie, to keep the clutch healthy)

[We updated this](#)

- Line 113: "should be visible in neutrophils". Can you comment how much transient expression you see before growing up the larvae (eg, a percentage of neutrophils/number of neutrophils labelled)

[We have not quantified this as it varies between batches, but we provide an indication.](#)

-Line 117: "Depending on the transgenesis success, which varies with each construct, you should observe a percentage of positive offspring in a subset of the crosses." Can you comment here in more detail. What types of percentages do you normally see?

[We have not quantified this in detail as it varies between batches, but we provide an idea.](#)

- Line 185: "The exposure time has to be as low as possible to minimize fluorescent exposure and maximize temporal resolution in the time-lapse." Exposure time and laser power?

We added a note: The laser power depends on the condition of the laser but has to be adjusted to a level that permits low enough exposure time for dynamic imaging. We typically take a time lapse of one stack every 30 sec.

Reviewer #2:

Manuscript Summary:

The Jove Submission by Coombs et al provides very useful guidelines on how to study neutrophil responses to tissue damage in vivo, including the chemokine receptor dynamics underlying cell migration. It describes detailed and clear protocols on how to perform these studies taking advantage of the optical transparency of zebrafish embryos.

Major Concerns:

none

Minor Concerns:

Lines 67/68: The text might suggest that genetic tractability is a feature specific for zebrafish. I suggest to rephrase this to make clear that both zebrafish and mice are genetically tractable, but in zebrafish it is less technically demanding.

We amended this phrase accordingly.

Line 101: "at around 9 AM (this may vary in different fish facilities)". I suggest to add "shortly after the onset of daylight"

We amended this phrase accordingly.

Line 103: it might be useful to mention that many researchers prefer (or are more used to) using agarose molds to align eggs

We removed this part in response to reviewer 3 to eliminate the general protocol details for microinjection of eggs. We kept the specific information, such as what to screen for, construct info and amounts injected.

Line 117: suggest to insert fluorescently-tagged before receptor.

This was added

Line 123, step 1.10 Suggested addition: after validating the neutrophil-specific expression of the transgene

This was added

Line 140 Suggest to add a step 2.5 to describe whether embryos are left to hatch naturally or to be dechorionated.

This was added

Line 144: Because neutrophils are also present at earlier stages, I suggest to insert abundant before neutrophils

This was added

Line 365/366: could useful > could be useful

This was corrected

Line 383-386: A little more detailed discussion would be useful on how it may be checked whether or not a fluorescent tag might influence the biological function of the receptor

We added a few additional lines in the discussion.

Reviewer #3:

Manuscript Summary:

The authors describe methods to monitor the dynamic of Cxcr1 chemokine receptor in the neutrophils in response to wounding in vivo. This information could be valuable to the community. The major issues are the resolution of receptor internalization is not good, and the quantification method for receptor internalization is confusing.

Major Concerns:

1. Is there any evidence showing that the chemokine receptor is expressed in neutrophils?

Yes, such data can be found in previous publication (Deng et al 2013, Journal of Leukocyte Biology, Fig. 4A). We have added a citation for this in the representative results section.

2. Better experiments and images at higher resolution are needed to demonstrate the receptor internalization.

* Because this manuscript describes live imaging of receptor dynamics in response to endogenous ligands, it is important to show the receptors are internalized using time-lapse experiments. Is it possible to wound the embryos after taking time-lapse at basal levels?

In the original paper we indeed show time-lapse movies where the internalisation can be observed as it changes in cells. We appreciate that the movies provide more clarity and show the internalisation more convincingly, so we added three movies in this paper from the original paper showing the behaviour of Cxcr1 and Cxcr2 in real time at steady state (movie 1), upon wounding (movie 2) during initial mobilisation and chemotaxis phase (movie 3). We also provide a corresponding figure 2, showing receptor distribution in steady state to versus upon

wounding. Finally, we provide a magnified image of an example of neutrophils at wounds with labelled Cxcr1 and Cxcr2 in new figure 4.

* Neutrophil morphology is complex and changed quickly, which makes it difficult to get images at high-resolution. Is it possible to fix the embryos and image neutrophils at high-resolution to provide additional information?

We added a suggestion for this as potential extension to the protocol in the discussion, as it can allow more detailed localisation analyses.

* The authors used the differences in intensity between neighboring pixels to evaluate the receptor distribution. What does "neighboring pixels" refer to? As the author mentioned, the expression of receptors on the plasma membrane (maybe be cytosol as well) should be quantified to provide convincing evidence.

We provide more explanation for the neighbouring pixel definition in a corresponding note. Neighbouring pixels refers to pixels close by, the distance is determined empirically based on the size of local peaks in intensity. For our images, with a pixel size of $0.389\ \mu\text{m}$, when the receptor showed vesicular distribution each bright dot was about 5 pixels. We therefore compared intensities of each pixel with 5 pixels apart, i.e.

if you have a horizontal line of 10 pixels, pixel 1 is compared with pixel 6, pixel 2 is compared with pixel 7 etc.

Regarding the expression of receptor at the plasma membrane, we performed this quantification in neutrophils in the original paper and compared it with the contrast-based measurement. We found that the membrane-based quantification gave consistent results with the contrast method in single cells but was less sensitive and accurate in clustered cells because it is not possible to accurately segment individual membranes in overlapping neutrophils (Supp Fig.1 of original paper). We now show these data as Figure 3 in this paper for clarity. Our recommendation here is that contrast needs to be normalised to internal reference, that need not be a membrane marker, to account for global fluctuations of contrast across samples. In our case, we were able to use the non-responding cells in the CHT as these were always present in the field of view. But we appreciate this will not always be applicable to other studies and suggest a control cell marker as alternative. To avoid misunderstanding of our point, we removed the word 'membrane' marker from that sentence (1823-1826), as this need not be a membrane marker. Generally, we try to suggest different options with related considerations to help readers choose the best approach for their questions and sample types.

Minor Concerns:

1. "trimeric G-proteins" should be "trimeric G proteins"

This has been amended

2. In zebrafish, embryos are not eggs.

We refer to fertilised eggs but changed 'eggs' to 'embryos' in a couple of instances where it was appropriate to say embryos.

3. It is necessary to describe the transgenic construct to show where the tag is placed because the tag might affect the protein's function. Or the author could briefly mention the strategy and refer the readers to the paper they have just published. The authors also did not explain why the tandem fluorescent timer is used.

We describe the constructs in new Fig.1 and explain the original intention of usage in the representative results section.

4. It is unnecessary to grow embryos in E3 medium. Egg water is sufficient.

We understand this to be the case for young embryos, but for older embryos, close to larva stage, E3 medium is commonly used. We added a note that young embryos can be grown initially in egg water (step 2.2).

5. I think it is not necessary to describe the details of embryo harvest and microinjection because these can be found in other published papers. However, it is needed to describe the actual amount of RNA and DNAs instead of concentration injected into the embryos. Also, it is better to inject DNA and mRNA using separate needles unless the DNA solution is RNAase free. Otherwise, RNA can be degraded when it is mixed with DNA.

Additionally, it is also a good practice to inject DNA into the cell.

We agree that this is not essential and have removed some standard steps and added a citation. We have kept the more customised steps as suggested. We added a note regarding the importance of RNAse free solution for transposase mixture and mention the alternative option to inject with separate needles (step 1.3).

6. It is essential to describe how much the ventral fin is cut.

We added some more explanation in step 3.4

7. The authors generated the transgenic lines, but why fluorescently tagged receptor mRNA (e.g. Cxcr1-FT) is injected in the chemokine response assay.

We clarify now that these steps are not part of the same experiment but a side experiment to establish the behaviour of the receptor in the presence versus absence of candidate chemokine ligand.

8. In the figure legend, it is necessary to name the transgenic lines properly. For example, figure 2, what is (sfGFP) lyz:Cxcr1-FT?

We have now added an additional figure explaining the constructs and transgenic lines (new figure 2) so that the reference of sfGFP is understood in the subsequent figures.

9. There are some issues in Figure 2. 1) Blue and green color are difficult to be distinguished. Suggest not to

outline the cells, which makes it challenging to see membrane expression. Instead, color coding the areas might be sufficient.

We have now changed this figure to the Supplementary figure 1 from original paper, where the cells are shown with and without the contours in the different channels. Blue and green colours are no longer shown in the same image.

2) What is "N" referred to? Cell number or embryo number? Three are too few for any static analyses. 3) "at the wound focus": Does it refer to the wound area?

We do not use these data for statistical analyses but just to indicate what values each quantification gives from the same cells, we added a note in the legend to explain the data are not intended for statistics but to show qualitative examples of analysis. Wound focus refers to the wound area. We removed the word focus for clarity and added dotted lines to indicate the wound in the image.

4). Panel C shows images at 80 min after wounding? Is it too late? Receptor could be internalized initially but is recovered afterward. We now provide a time-lapse of the cells starting 10 mpw to indicate dynamics of receptor at an earlier stage in the same embryos, where it can be seen that Cxcr1 and Cxcr2 are different from early stage as soon as they reach the wound.

5) It is essential to show actual images in embryos injected with Cxcl8-MO. Did Cxcr1 fail to internalize in embryos injected with cxcl8-MO? Also, did neutrophils migrate to the wound in cxcl8 MO-injected embryos?

We added example images taken from Supp Video 5 of original paper in new figure 4. Cxcl8a and Cxcl8b knockdown has been reported to reduce neutrophil recruitment to wounds (de Oliveira et al. Journal of Immunology 2013 and Zuniga-Translavina J. Immunol. Res 2017). For the purpose of receptor distribution analysis, we imaged the neutrophils long enough to observe accumulation of cells at the wound.

Dr. Milka Sarris, MRC Fellow,
Lecturer in University of Cambridge,
Trinity College Fellow



Date: Monday, August 10, 2020

Department of Physiology, Development
And Neuroscience,
Downing Site, CB2 3DY
Cambridge
Tel: 07476090696
Email: ms543@cam.ac.uk

Dear Dr Bajal,

We are hereby submitting the additional editorial revisions for the manuscript entitled “Live imaging of chemokine receptors in zebrafish neutrophils during wound responses”. We have answered your specific comments in the manuscript as tracked changes. We have reduced the highlighted section by removing section 1 and reducing the highlighted text in section 6. We have also uploaded separate supplementary files for related scripts and the reply from Springer Nature regarding the request to reuse material.

We are grateful for your consideration and look forward to hearing from you.

Yours sincerely,



Milka Sarris

Subject **RE: request for re-use of material**
From Journalpermissions <journalpermissions@springernature.com>
To Milka Sarris <ms543@cam.ac.uk>
Date 2020-07-07 13:28



Dear Milka,

Thank you for your recent Springer Nature permissions request. This work is licensed under the Creative Commons Attribution 4.0 International License, which permits unrestricted use, distribution, modification, and reproduction in any medium, provided you:

- 1) give appropriate acknowledgment to the original author(s) including the publication source,
- 2) provide a link to the Creative Commons license/include a notice of the CC license in legend and reference, and indicate if changes were made.

You are not required to obtain permission to reuse material from this article, but you must follow the above two requirements.

Images or other third party material included in the article are encompassed under the Creative Commons license, unless indicated otherwise in the credit line. If the material is not included under the Creative Commons license, users will need to obtain permission from the license holder to reproduce the material.

To view a copy of the Creative Commons license, please visit <http://creativecommons.org/licenses/by/4.0/>

Please let me know if you have any questions.

Best wishes,
Oda

Oda Siqveland
Rights Executive

SpringerNature
The Campus, 4 Crinan Street, London N1 9XW,
United Kingdom
T +44 (0) 207 014 6851

<http://www.nature.com>
<http://www.springer.com>
<http://www.palgrave.com>

BLACK LIVES MATTER

From: Milka Sarris [mailto:ms543@cam.ac.uk]
Sent: 06 July 2020 12:58

To: Journalpermissions

Subject: request for re-use of material

[External - Use Caution]

Dear Sir/Madam,

Hope this email finds you well. I am writing to request permission to re-use material from movies and figure from our paper in Nature Communications (<https://www.nature.com/articles/s41467-019-13107-3>) for the purpose of a publication for a corresponding methods paper in Journal of Visualised Experiments. The specific material would include Figures 1 (panels a-c) and 2 (c and some experimental groups of graph in panel d), Supplementary Figures 1 (a-d) and 3 (subset of images in panel a) and Supplementary Movies 1-3. Please let me know if there are any specifications on how to cite the original paper.

I look forward to hearing from you.

Best wishes

Milka

Milka Sarris, PhD
MRC fellow/ Lecturer/ Trinity College fellow
Department of Physiology, Development and Neuroscience (PDN)
University of Cambridge
Downing Street
Anatomy Building
Cambridge CB2 3DY
UK
tel: +44 1223 333542