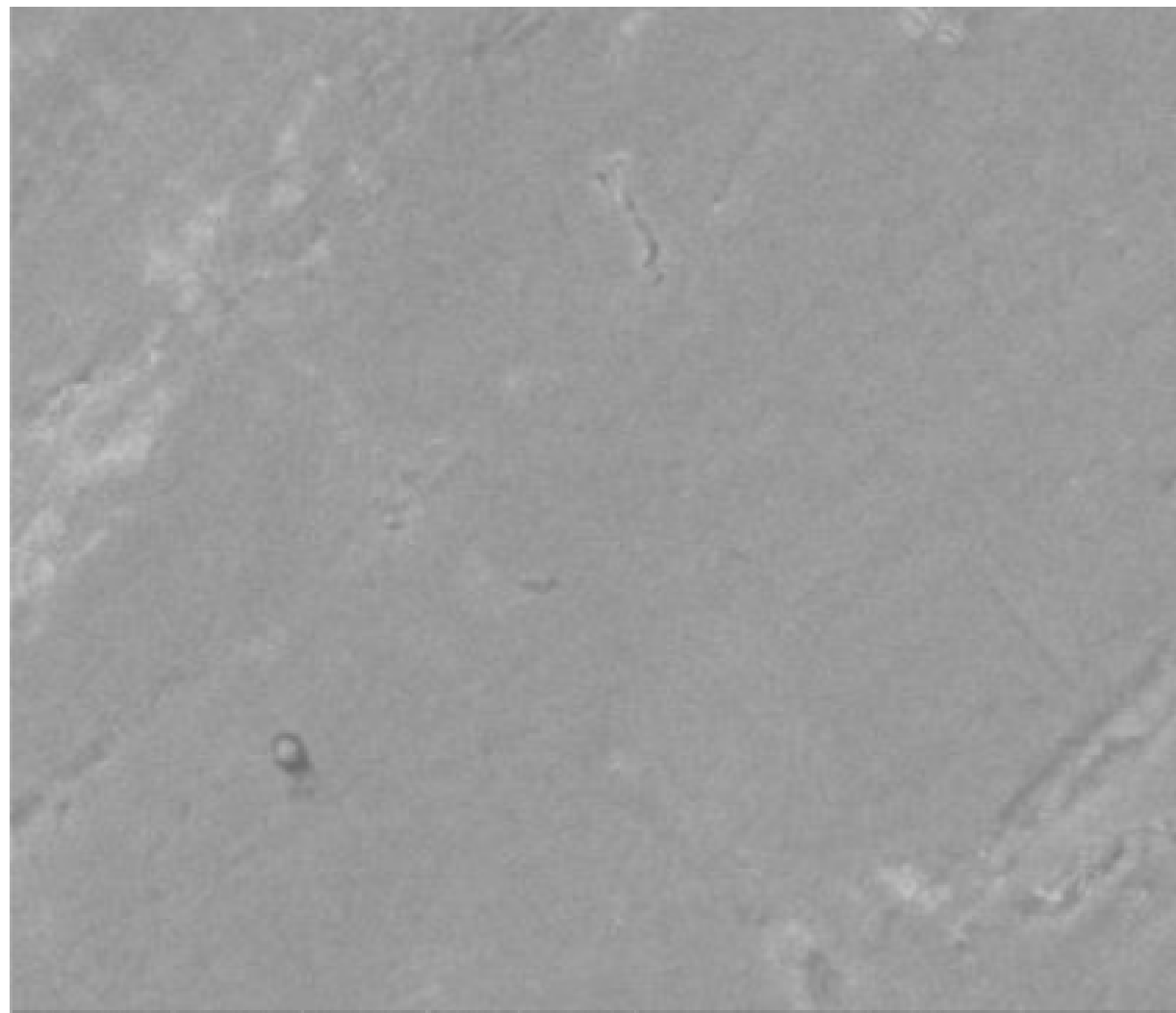


7/7/2016	HV	mag	mode	WD	10 μ m
1:59:14 AM	10.00 kV	10 000 x	SE	4.9 mm	Quanta 600



7/7/2016	HV	mag	mode	WD	5 μ m
3:05:33 AM	10.00 kV	20 002 x	SE	6.0 mm	Quanta 600