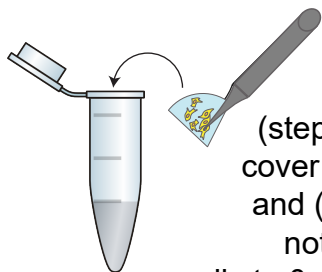


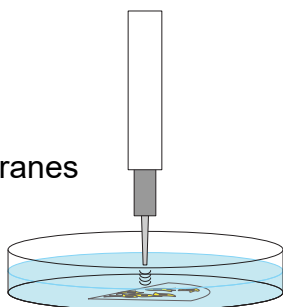
A

(sections 2 and 3) Grow cells expressing fluorescent protein on glass cover slips (optional poly-L-lysine coating).

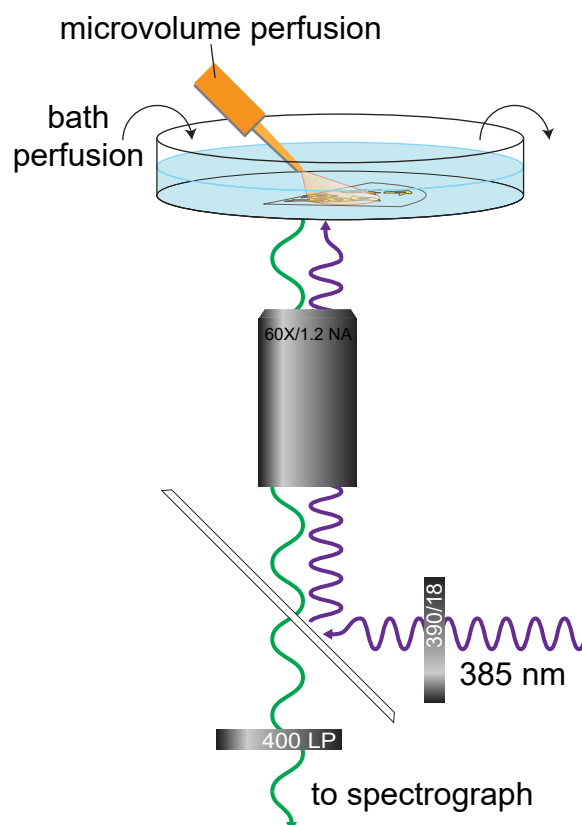


(steps 4.1-4.2) Break cover slip with forceps and (if cover slips are not coated) expose cells to 0.1% poly-L-lysine.

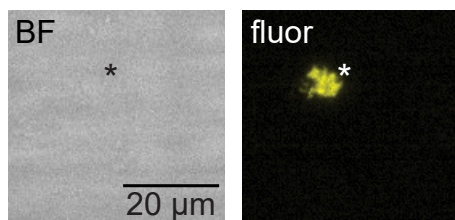
(steps 4.1-4.3) Briefly sonicate and transfer membranes to microscope stage.



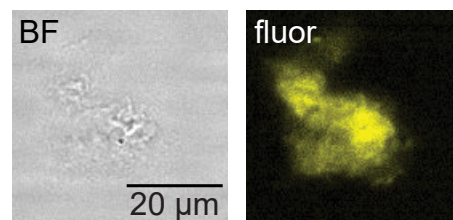
B



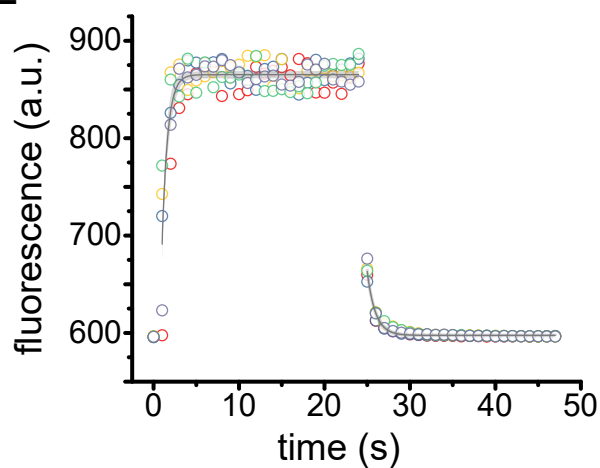
C



D



E



F

