

Journal of Visualized Experiments

In vitro neuromuscular junction induced from human iPS cells

--Manuscript Draft--

Article Type:	Invited Methods Article - JoVE Produced Video
Manuscript Number:	JoVE61396R2
Full Title:	In vitro neuromuscular junction induced from human iPS cells
Section/Category:	JoVE Developmental Biology
Keywords:	iPS cells; Neuromuscular Junction; Motor neuron; Skeletal myotube; muscle contraction; NMJ-disease
Corresponding Author:	Chuang-Yu Lin, Ph.D. Center for iPS Cell Research and Application (CiRA), Kyoto University Kyoto, Kyoto JAPAN
Corresponding Author's Institution:	Center for iPS Cell Research and Application (CiRA), Kyoto University
Corresponding Author E-Mail:	chuangyuck@gmail.com
Order of Authors:	Chuang-Yu Lin, Ph.D. Michiko Yoshida Li-Tzu Li Megumu K Saito
Additional Information:	
Question	Response
Please indicate whether this article will be Standard Access or Open Access.	Open Access (US\$4,200)
Please indicate the city, state/province, and country where this article will be filmed . Please do not use abbreviations.	Kyoto/Japan

May 04, 2020

Dr. Alisha DSouza

Senior Review Editor

JoVE

Dear Dr. DSouza,

Re: JoVE61396

We would hereby like to submit a revised manuscript entitled “In vitro neuromuscular junction induced from human iPS cells.” to be considered for publication in *JoVE*.

We would like to thank the editor and the reviewers for their critical and instructive comments regarding our manuscript. In response to the editors’ and reviewers’ suggestions, we revised the entire manuscript. We could respond to all of the concerns raised by the reviewers such that the contents of the revised manuscript have been significantly improved.

Thank you very much in advance for your consideration of our manuscript.

Respectfully yours,

Chuang-Yu Lin, PhD

Postdoctoral Researcher

Department of Clinical Application

Center for iPS Cell Research and Application (CiRA)

Kyoto University

53 Shogoin-Kawahara-cho, Sakyo, Kyoto, Japan, 606-8507

Tel: +81-75-366-7085/7089, Fax: +81-75-366-7091

TITLE:

In vitro Neuromuscular Junction Induced from Human Induced Pluripotent Cells

AUTHORS AND AFFILIATIONS:

Chuang-Yu Lin^{1,*}, Michiko Yoshida^{1,2}, Li-Tzu Li³, Megumu K. Saito¹

¹Department of Clinical Application, Center for iPS Cell Research and Application (CiRA),
Kyoto University, Kyoto, Japan

²Department of Pediatric, Kyoto Prefectural University of Medicine, Kyoto, Japan

³Graduate Institute of Clinical Medicine, Taipei Medical University, Taipei, Taiwan

Email addresses of co-authors:

Michiko Yoshida (michi@koto.kpu-m.ac.jp)

Li-Tzu Li (litzulias@gmail.com)

Corresponding author:

Megumu K. Saito (msaito@cira.kyoto-u.ac.jp)

Chuang-Yu Lin (chuangyuck@gmail.com)

KEYWORDS:

iPSCs, in vitro neuromuscular junction, motor neuron, Schwann cell, myotube contraction, curare

SUMMARY:

Here we provide a protocol to generate in vitro NMJs from human induced pluripotent stem cells (iPSCs). This method can induce NMJs with mature morphology and function in 1 month in a single well. The resulting NMJs could potentially be used to model related diseases, to study pathological mechanisms or to screen drug compounds for therapy.

ABSTRACT:

The neuromuscular junction (NMJ) is a specialized synapse that transmits action potentials from the motor neuron to skeletal muscle for mechanical movement. The architecture of the NMJ structure influences the functions of the neuron, the muscle and the mutual interaction. Previous studies have reported many strategies by co-culturing the motor neurons and myotubes to generate NMJ in vitro with complex induction process and long culture period but have struggled to recapitulate mature NMJ morphology and function. Our in vitro NMJ induction system is constructed by differentiating human iPSC in a single culture dish. By switching the myogenic and neurogenic induction medium for induction, the resulting NMJ contained pre- and post- synaptic components, including motor neurons, skeletal muscle and Schwann cells in the one month culture. The functional assay of NMJ also showed that the myotubes contraction can be triggered by Ca^{++} then inhibited by curare, an acetylcholine receptor (AChR) inhibitor, in which the stimulating signal is transmitted through NMJ. This simple and robust approach successfully derived the complex structure of NMJ with functional connectivity. This in vitro human NMJ, with its integrated structures and function, has promising potential for studying pathological mechanisms and compound screening.

INTRODUCTION:

The neuromuscular junction (NMJ) is a specialized synapse that transmits signals from motor neurons to skeletal muscles to control voluntary muscle movement^{1,2}. This synapse is composed of pre- and post-synaptic parts. In the pre-synaptic part, the motor neuron releases acetylcholine (ACh) from synaptic vesicles by exocytosis. ACh is released from synaptic vesicles to cross the synaptic cleft and to bind to AchR on the post-synaptic part to trigger an action potential for muscle contraction^{3,4}. Any malfunction in this delicate structure can cause NMJ diseases, including spinal muscular atrophy (SMA), congenital myasthenic syndromes (CMS), myasthenia gravis (MG)⁵⁻⁷, etc. These diseases greatly damage the quality of patients' lives and unfortunately have no effective treatment approaches due to the lack of understanding the pathological mechanism. In this study, we aimed to generate in vitro human NMJ from human iPSCs for accurate disease modeling and for therapeutic compounds screening.

Previous studies have demonstrated the possibility of generating in vitro NMJ by co-culture strategies. The motor neurons and skeletal myotubes are generated respectively. The two cell types can be generated from human or mouse primary tissue cultures or be induced from stem cells⁸⁻¹¹ and then co-cultured for NMJ formation. The further applications include merging the co-cultured NMJ into microfluidic 3D devices and to use optogenetic units for quantifiable functional assays^{12,13}. However, these strategies take a long culture period and require struggle to obtain the primary components of the NMJ, either the motor neuron or the skeletal myotube simultaneously. Yet another important component of NMJ, the Schwann cell, cannot be generated in these culture systems. The advanced culture system that contains the myotube, motor neuron and Schwann cell is desirable as it can offer a reliable and robust model for NMJ studies.

Myogenic Differentiation 1 (MYOD1) is a well-known myogenic regulator for myogenesis¹⁴. The efficient myogenic differentiation method which applied MYOD1 to drive iPSC into myotubes was built in a previous study¹⁵. Therefore, we induced the myotubes by overexpressing MYOD1 in iPSCs¹⁵, and high efficiency of myogenic differentiation was shown. Interestingly, neuron cells appeared along with myotubes spontaneously after day 10. The appearance of neuron cells in myogenic culture has led us to develop the strategy for generating in vitro NMJ in a single dish. Here we provide a strategy to generate NMJs by overexpressing MYOD1 in human iPSCs for myogenic and motor neuron induction in the same culture dish. The motor neurons are induced spontaneously with several neurotrophic factors (GDNF, BDNF, NT3, etc.)⁸, and, in the meanwhile, the Schwann cells can also be induced^{16,17}. Through the interactions among the myotubes, the motor neurons and the Schwann cells, the mature NMJ are formed¹⁸. This method can generate functional NMJ efficiently, enabling the potential study of pathological mechanisms and therapeutic compound screening.

PROTOCOL:

1. Preparation of extracellular matrix (ECM)-coated plates

1.1 Dilute ECM (see **Table of Materials**) with ice cold 1x PBS to a final concentration of 2%.

1.1.1 Add 1 mL of ECM to 49 mL of 1x PBS in a 50 mL plastic tube. Mix well by pipetting up and down several times.

1.2 Place 1 coverslip into each well of a 6-well plate. Add 1.5 mL of 2% ECM into each well.

1.3 Incubate the well plate with 2% ECM for 2 h at 37 °C.

1.4 Aspirate ECM from the well plate and store the plate at 4 °C before use.

2. Differentiation of iPSCs toward NMJ

2.1 Seed 4×10^5 of iPSCs per well on the 6-well plate prepared in section 1. Make sure to seed the cells on the coverslip pre-deposited in the well.

NOTE: In this study, the 201B7^{MYOD} iPS cell line, a gift from Dr. Sakurai's Lab, was used¹⁵.

2.1.1 Remove the medium from the iPSCs on the 6 cm culture dish and wash the iPSCs once with 1x PBS.

2.1.2 Add 1 mL of cell detachment solution to the dish and incubate for 10 min at 37 °C.

2.1.3 Add 3 mL of primate embryonic stem (ES) cell medium to the dish and pipette 3 times gently.

2.1.4 Collect the supernatant, which contains detached iPSCs, into a 50 mL plastic tube and centrifuge at $160 \times g$ at 4 °C for 5 min.

2.1.5 Carefully aspirate the supernatant, resuspend the iPSCs in 3 mL primate ES cell medium with 10 μ M Y27632, and count the cell number using a hemocytometer.

2.1.6 Dilute the iPSCs with primate ES cell medium and 10 μ M Y27632 to a concentration of 2×10^5 cells/mL. Add 2 mL of iPSCs on the coverslip pre-deposited in the well that described in section 1.

2.2 Induction of the iPSCs to NMJ

2.2.1 On day 1, 24 h after seeding the iPSCs to the 6-well plate, remove the culture medium and replace it with 2 mL of fresh primate ES cell medium containing 1 μ g/mL doxycycline to each well.

2.2.2. Change the medium with 2 mL of myogenic differentiation medium (MDM) (**Table 1**) containing 1 μ g/mL doxycycline (final concentration) to each well. Refresh the medium every day from day 2 to day 10.

2.2.3. From day 11, switch the medium to 2 mL of NMJ medium (**Table 1**) to each well. Refresh the medium every 3–4 days thereafter until day 30.

2.3 Observe the differentiated NMJ by phase inverted microscopy on day 30. The NMJ can be used for the following analysis.

3. Immunofluorescence (IF) staining

3.1 On day 30, aspirate the culture medium from the 6-well plate. Fix the NMJ culture by adding 2 mL of 4% paraformaldehyde to each well for 30 min at room temperature.

3.2 Wash the samples 3 times by adding 2 mL of 1x PBS to each well (3 min for each wash).

3.3 Permeabilize the samples with 0.1% Triton/PBS for 10 min.

3.4 Repeat step 3.2.

3.5 Block the samples with 0.5% BSA for 1 h at room temperature.

3.6 Repeat step 3.2.

3.7 Incubate the samples with the primary antibodies at 4 °C overnight. The dilution of antibodies is as follows: Islet 1 (1 µg/mL), myosin heavy chain (MYH) (1/300), neurofilaments (NF) (1 µg/mL), S-100 (1/300), synaptic vesicle protein 2 (SV2) (1 µg/mL), Tuj1 (1/1000).

3.8 Repeat step 3.2.

3.9 Incubate the samples with the secondary antibodies at room temperature for 1 h. The concentration of the secondary antibodies used is as follows: anti-mouse IgG 488 conjugated (0.1 µg/mL), anti-rabbit IgG 488 conjugated (0.1 µg/mL).

3.10 Repeat step 3.2.

3.11 Incubate the samples with aBTX-647 (0.5 µg/mL) for AChR staining and with DAPI (1 µg/mL) for nucleus staining.

3.12 Repeat step 3.2.

3.13 Pick up the coverslip with a pair of forceps from the 6-well plate and mount it in 50% glycerol/PBS solution on a microscope slide.

4. Scanning electron microscopy (SEM)

176 4.1 Fix the NMJ culture with 4% paraformaldehyde and 1% glutaraldehyde prepared in 0.1 M
177 potassium phosphate buffer at room temperature for 1 h.

178
179 4.2 Wash the samples 3 times by immersing them in 0.1 M potassium phosphate buffer at room
180 temperature (10 min for each wash).

181
182 4.3 Dehydrate the samples with ascending concentrations of ethanol (50%, 70%, 90%, 95% and
183 100% twice). Immerse the samples in each concentration of ethanol for 10 min.

184
185 4.4 Dry the samples by a critical point dryer (-30 °C, 0.1 Torr).

186
187 4.5 Coat the samples with Pt (platinum) ion coater (30 mA for 3 min; thickness of Pt is about 20
188 nm).

189
190 4.6 Observe the samples by SEM at 5 kV.

191 192 **5. Transmission electron microscopy (TEM)**

193
194 5.1 Use a cell scraper to harvest the tissue from the NMJ culture plate. Shape the tissue into a
195 small pellet (3 mm³) with a razor blade and glue by gelation to form a gel-wrapped piece. Fix the
196 gel-wrapped piece with 2% paraformaldehyde and 2% glutaraldehyde prepared in 0.1 M
197 potassium phosphate buffer at 4 °C overnight.

198
199 5.2 Wash the samples 3 times by immersing them in 0.1 M potassium phosphate buffer (15 min
200 for each wash) at room temperature.

201
202 5.3 Postfix the samples with 1% osmium tetroxide prepared in double distilled H₂O for 1 h at room
203 temperature.

204
205 CAUTION: This step must be done in a chemical hood.

206
207 5.4 Repeat step 5.2.

208
209 5.5 Dehydrate the samples with ascending concentrations of ethanol (50%, 70%, 90%, 95% and
210 100% twice). Immerse the samples in each concentration of ethanol for 10 min.

211
212 5.6 Aspirate the 100% ethanol. Infiltrate the samples with ascending volume ratios of epoxy resin
213 to 100% ethanol mixtures (1:3, 1:1 and 3:1). Agitate each mixture gently at 10 rpm for 1 h at room
214 temperature.

215
216 5.7 Replace the epoxy-ethanol mixture with pure epoxy resin and agitate gently at 10 rpm for 4 h
217 at room temperature.

218

5.8 After 4 h, refresh the epoxy resin with fresh epoxy resin and agitate gently at 10 rpm overnight at room temperature.

5.9 Embed the samples in embedding capsules with fresh epoxy resin and cure the samples in an oven at 65 °C overnight.

5.10 Ultramicrotomy

5.10.1 Coarsely trim the sample blocks under a dissecting microscope for the correct orientation.

5.10.2 Finely trim the coarsely trimmed blocks with a glass knife on an ultramicrotome to obtain smooth surfaces.

5.10.3 Prepare 70 nm ultrathin sections from the well-trimmed blocks with a diamond knife. Retrieve the ultrathin sections with 200 mesh carbon-formvar-coated copper grids.

5.10.4 Stain the ultrathin sections containing grids with saturated uranyl acetate prepared in double distilled H₂O for 30 min and wash the grids 3 times with double distilled H₂O (10 min for each wash).

5.10.5 Further, contrast the ultrathin sections with Reynold's lead citrate¹⁹ (2.5%) for 5 min and wash with boiled H₂O pre-cooled to room temperature 3 times (10 min for each wash). Put several sodium hydroxide pellets around the staining area to prevent CO₂ precipitation on the sections.

5.11 Observe the ultrathin sections by TEM at 70 kV.

6. Muscle contraction and curare treatment

6.1 To trigger the myotube contraction, add 25 mM CaCl₂ in the culture medium in step 2.3. The movement of myotubes can be observed in 1–2 min.

6.2 Place the 6-well plate on the stage of an inverted microscope. Record a movie of myotube contraction by live cell microscopy.

6.3 To stop the myotube contraction, add curare to the culture medium (300 ng/mL). Then record the movie as step 6.2.

6.4 Open the movie file with motion vector analysis software then click the **Motion Analysis** button to analyze the movie.

NOTE: The myotubes contraction is shown as time-motion graphic. The movies are color-coded to show the movement speed of myotubes. The color-coded sparkly signals indicate the movements of myotubes where the red color shows the fastest movement speed and blue color shows the slowest movement speed.

REPRESENTATIVE RESULTS:

Using our differentiation strategy, the culture showed pre- and post-synaptic components of the NMJ on day 30. The NMJ components were induced and well-developed in a single well, and their morphology and locations in the NMJ were demonstrated by IF microscopy (**Figure 1**). The flow chart in **Figure 1A** summarizes the time course of the NMJ differentiation progression. The staining of neurofilaments (NF), synaptic vesicles (SV2) and AChR (**Figure 1B,C**) indicate the neurons. The single staining images of NF and SV2 are shown in **Supplementary Figure 1**. The alpha-bungarotoxin staining indicates AChR (**Figure 1C**). The merged image shows the relative locations of a motor neuron and AChR in the NMJ (**Figure 1D,E**). The second set of IF staining indicates the motor neuron by Tuj1 and Islet 1 (**Figure 1G,H**) and post-synaptic myotubes by myosin heavy chain (**Figure 1I**). The Schwann cells were also labeled by S-100 antibody in the NMJ culture (**Supplementary Figure 2**).

To further confirm the identities of the NMJ components, we used SEM for detailed morphological analysis. Mature NMJ morphology with expanded axon terminals, axons and muscle fibers are shown in **Figure 2A,B**. TEM was performed to reveal the mature ultrastructure of the NMJ components including the pre-synaptic axon terminal with synaptic vesicles and the post-synaptic part, which is separated by the synaptic cleft (**Figure 2C–E**). Junctional folds are indicated by the yellow dashed-line, which marks the junction of the neuron and muscle fibers (**Figure 2C**). The mature axon terminals that contain synaptic vesicles are shown in **Figure 2D,E** (yellow arrows). The morphological results show that the NMJ components were well induced and matured.

To evaluate the function of the in vitro NMJ, we performed motion analysis by stimulating the motor neuron with CaCl_2 to trigger myotube contractions. The results showed that Ca^{2+} can trigger muscle contractions. The contractions could be interrupted by curare. The NMJ showed prominent motion signals that disappeared with curare treatment (**Figure 3**). This effect confirms that the motor neuron signals were transmitted through the NMJ to trigger muscle contraction. Taken together, the IF microscopy, SEM and TEM data demonstrated the spatial distribution, morphology and maturity of the NMJ components in the in vitro NMJ generated by the protocol described above. Motion analysis validated the function of the in vitro NMJ, which implies its potential application to developing therapeutic strategies.

FIGURE AND TABLE LEGENDS:

Figure 1: Flow chart for NMJ induction and IF images of NMJ culture. (A) A flow chart for the NMJ differentiation progression. (B–F) Detection of NMJ components, neurofilaments (NF), synaptic vesicles (SV2) and AChR. The white arrows in panel D indicate the NMJ. (G–K) Pre- and post-synaptic components of the NMJ. Tuj1 and Islet1 indicate the motor neuron, and myosin heavy chain (MYH) indicates the myotube. a-BTX, alpha-bungarotoxin.

Figure 2: SEM and TEM images of mature NMJ. (A) The spatial distribution of NMJ components show the axon terminal anchored on the surface of the muscle fiber (Mf). (B) A higher

magnification of the NMJ shows the axon terminals. (C) The ultrastructure of a matured NMJ with pre-synaptic axon terminal (red arrowheads) and synaptic vesicles (Sv), synaptic cleft (Sc) and post-synaptic parts (red arrows). Junctional folds (jf) are indicated by the yellow dashed line. Ax, axon. (D, E) The high magnification images show the synaptic vesicles in axon terminals (yellow arrows).

Figure 3: Myotubes contraction analysis of in vitro NMJ. Myotubes contraction were triggered with 25 mM CaCl_2 solution (green line). The contractions were inhibited after treated with curare (yellow line). Please also see **Supplementary Movie 1** and **Supplementary Movie 2**.

Supplementary Movie 1: The myotubes contraction triggered by Ca^{++} .

Supplementary Movie 2: The much weaker contraction of myotubes after curare treatment is shown.

Supplementary Figure 1: The single staining images of neurofilaments (NF, white arrows) in NMJ culture. The single staining images of synaptic vesicles (SV2, white arrows) in NMJ culture.

Supplementary Figure 2: The Schwann cells labeled by S-100 antibody in NMJ culture.

Table 1: Formula of medium.

DISCUSSION:

Previous studies have reported methods for NMJ formation in vitro with sophisticated methods that require long-termed culture^{8,10,12,13,20}. These achievements lead the progression of in vitro NMJ. However, the complicated methodologies hindered the access of NMJ studies. Our protocol avoids co-culture to generate NMJs efficiently and robustly in a single well. Three cell types in the NMJ were observed in our induction system, including the myotubes, the motor neurons and the Schwann cells¹⁸. In addition, mature morphology and function were verified.

Based on our previous study, the initial cell density is a critical factor for NMJ formation, and different cell densities induce various numbers of NMJs in the culture¹⁸. A low cell density ($< 1 \times 10^4/\text{cm}^2$) induced a low number of neurons, which is unfavorable for NMJ formation. Although it would take much more time and resources to prepare a higher density of cells ($> 1 \times 10^5/\text{cm}^2$), we recommend that the cell density be between $1.5 \times 10^4/\text{cm}^2$ and $5 \times 10^4/\text{cm}^2$ using our protocol. The NMJ generated by this protocol is a heterogeneous tissue with multiple cell types which is closer to mimicing physiological conditions. The myotubes are found to evenly distribute on a culture dish but the motor neurons appear randomly, of which the phenomenon results in the unevenly distribution of NMJs in a culture. This NMJ is suitable for qualitative studies instead of the analysis requiring homogeneous culture systems. We also used other cell lines, eq., H9 (ES cell line)¹⁸ and A11 (iPS cell line, data not shown) to generate NMJ by this protocol. The NMJ can be generated successfully in morphology and function. The culture condition, nevertheless, needs to be optimized for different cell lines.

The chemically triggered myotubes contraction and curare-dependent inhibition confirmed that our in vitro NMJ was functional and could be potentially applied for practical assays. Spontaneous muscle contractions were observed randomly at 3–4 weeks of culture, but it could be avoided by extending the culture time to as long as two months¹⁸.

Various strategies have been published for generating in vitro NMJ of different maturation stages, but the in vitro NMJ generated in our system showed the significant maturity, as we can observe the transition of gamma to epsilon subunits of AChR during the culture¹⁸. Maturity is an important consideration for disease modeling with in vitro NMJ²¹. In conclusion, an in vitro NMJ with integrated structural components, maturity and function is of potential use for therapeutic development.

ACKNOWLEDGMENTS:

We thank Dr. Sakurai for kindly providing 201B7^{MYOD}. The electron microscopy study was supported by Keiko Okamoto-Furuta and Haruyasu Kohda (Division of Electron Microscopic Study, Center for Anatomical Studies, Graduate School of Medicine, Kyoto University). The monoclonal antibody was developed by HHMI/Columbia University, obtained from the Developmental Studies Hybridoma Bank, created by the National Institute Child Health and Human Development of the NIH, and maintained at the Department of Biology, University of Iowa. We also thank Shiori Oshima, Kazuhiro Nakagawa and Eriko Matsui for motion vector analysis. This work was supported by funding from Sony Imaging Products & Solutions Inc.; the Japan Society for the Promotion of Science KAKENHI, grant numbers 16H05352 and 20H03642 (to MKS); iPS Cell Research Fund (to CYL and MKS); Mochida Memorial Foundation for Medical and Pharmaceutical Research (to MKS); Takeda Science Foundation (to MKS); and a grant from The Program for Intractable Diseases Research utilizing Disease-specific iPS cells, which was aided by the Japan Agency for Medical Research and Development (17935400 to CYL and MKS, and 17935423 to MKS).

DISCLOSURES:

The authors have nothing to disclose.

REFERENCES:

- 1 Hong, I. H. K., Etherington, S. J. Neuromuscular Junction. In: *eLS*. John Wiley & Sons, Ltd (2001).
- 2 Sanes, J. R., Lichtman, J. W. Development of the vertebrate neuromuscular junction. *Annual Review of Neuroscience*. **22**, 389-442, doi:10.1146/annurev.neuro.22.1.389 (1999).
- 3 Jones, R. A. et al. Cellular and Molecular Anatomy of the Human Neuromuscular Junction. *Cell Reports*. **21** (9), 2348-2356, doi:10.1016/j.celrep.2017.11.008 (2017).
- 4 Slater, C. R. The Structure of Human Neuromuscular Junctions: Some Unanswered Molecular Questions. *International Journal of Molecular Sciences*. **18** (10), 2183, doi:10.3390/ijms18102183 (2017).
- 5 Comley, L. H., Nijssen, J., Frost-Nylen, J., Hedlund, E. Cross-disease comparison of amyotrophic lateral sclerosis and spinal muscular atrophy reveals conservation of selective

394 vulnerability but differential neuromuscular junction pathology. *Journal of Comparative*
395 *Neurology*. **524** (7), 1424-1442, doi:10.1002/cne.23917 (2016).

396 6 Shigemoto, K. et al. Muscle weakness and neuromuscular junctions in aging and disease.
397 *Geriatrics & Gerontology International*. **10**, S137-S147, doi:10.1111/j.1447-0594.2010.00608.x
398 (2010).

399 7 Abicht, A., Müller, J., Lochmüller, H. Congenital Myasthenic Syndromes. *GeneReviews*.
400 (2016).

401 8 Faravelli, I. et al. Motor neuron derivation from human embryonic and induced
402 pluripotent stem cells: experimental approaches and clinical perspectives. *Stem Cell Research &*
403 *Therapy*. **5** (4), 87-100, doi:10.1186/scrt476 (2014).

404 9 Demestre, M. et al. Formation and characterisation of neuromuscular junctions between
405 hiPSC derived motoneurons and myotubes. *Stem Cell Research*. **15** (2), 328-336,
406 doi:10.1016/j.scr.2015.07.005 (2015).

407 10 Yoshida, M. et al. Modeling the early phenotype at the neuromuscular junction of spinal
408 muscular atrophy using patient-derived iPSCs. *Stem Cell Reports*. **4** (4), 561-568,
409 doi:10.1016/j.stemcr.2015.02.010 (2015).

410 11 Vilmont, V., Cadot, B., Ouanounou, G., Gomes, E. R. A system for studying mechanisms of
411 neuromuscular junction development and maintenance. *Development*. **143** (13), 2464-2477,
412 doi:10.1242/dev.130278 (2016).

413 12 Uzel, S. G. M. et al. Microfluidic device for the formation of optically excitable, three-
414 dimensional, compartmentalized motor units. *Science Advances*. **2** (8), e1501429,
415 doi:10.1126/sciadv.1501429 (2016).

416 13 Santhanam, N. et al. Stem cell derived phenotypic human neuromuscular junction model
417 for dose response evaluation of therapeutics. *Biomaterials*. **166**, 64-78,
418 doi:10.1016/j.biomaterials.2018.02.047 (2018).

419 14 Davis, R. L., Weintraub, H., Lassar, A. B. Expression of a single transfected cDNA converts
420 fibroblasts to myoblasts. *Cell*. **51** (6), 987-1000, doi:10.1016/0092-8674(87)90585-x (1987).

421 15 Tanaka, A. et al. Efficient and reproducible myogenic differentiation from human iPS cells:
422 prospects for modeling Miyoshi Myopathy in vitro. *PLoS One*. **8** (4), e61540,
423 doi:10.1371/journal.pone.0061540 (2013).

424 16 Furlan, A., Adameyko, I. Schwann cell precursor: a neural crest cell in disguise?
425 *Developmental Biology*. **444**, S25-S35, (2018).

426 17 Jessen, K. R., Mirsky, R. Schwann Cell Precursors; Multipotent Glial Cells in Embryonic
427 Nerves. *Frontiers in Molecular Neuroscience*. **12** (69), doi:10.3389/fnmol.2019.00069 (2019).

428 18 Lin, C. -Y. et al. iPSC-derived functional human neuromuscular junctions model the
429 pathophysiology of neuromuscular diseases. *JCI Insight*. **4** (18), doi:10.1172/jci.insight.124299
430 (2019).

431 19 Reynolds, E. S. The use of lead citrate at high pH as an electron-opaque stain in electron
432 microscopy. *Journal of Cell Biology*. **17** (1), 208-212, doi:10.1083/jcb.17.1.208 (1963).

433 20 Steinbeck, J. A. et al. Functional Connectivity under Optogenetic Control Allows Modeling
434 of Human Neuromuscular Disease. *Cell Stem Cell*. **18** (1), 134-143,
435 doi:10.1016/j.stem.2015.10.002 (2016).

436 21 Bucchia, M., Merwin, S. J., Re, D. B., Kariya, S. Limitations and Challenges in Modeling
437 Diseases Involving Spinal Motor Neuron Degeneration in vitro. *Frontiers in Cellular Neuroscience*.
438 **12**, 61, doi:10.3389/fncel.2018.00061 (2018).
439

Figure 1

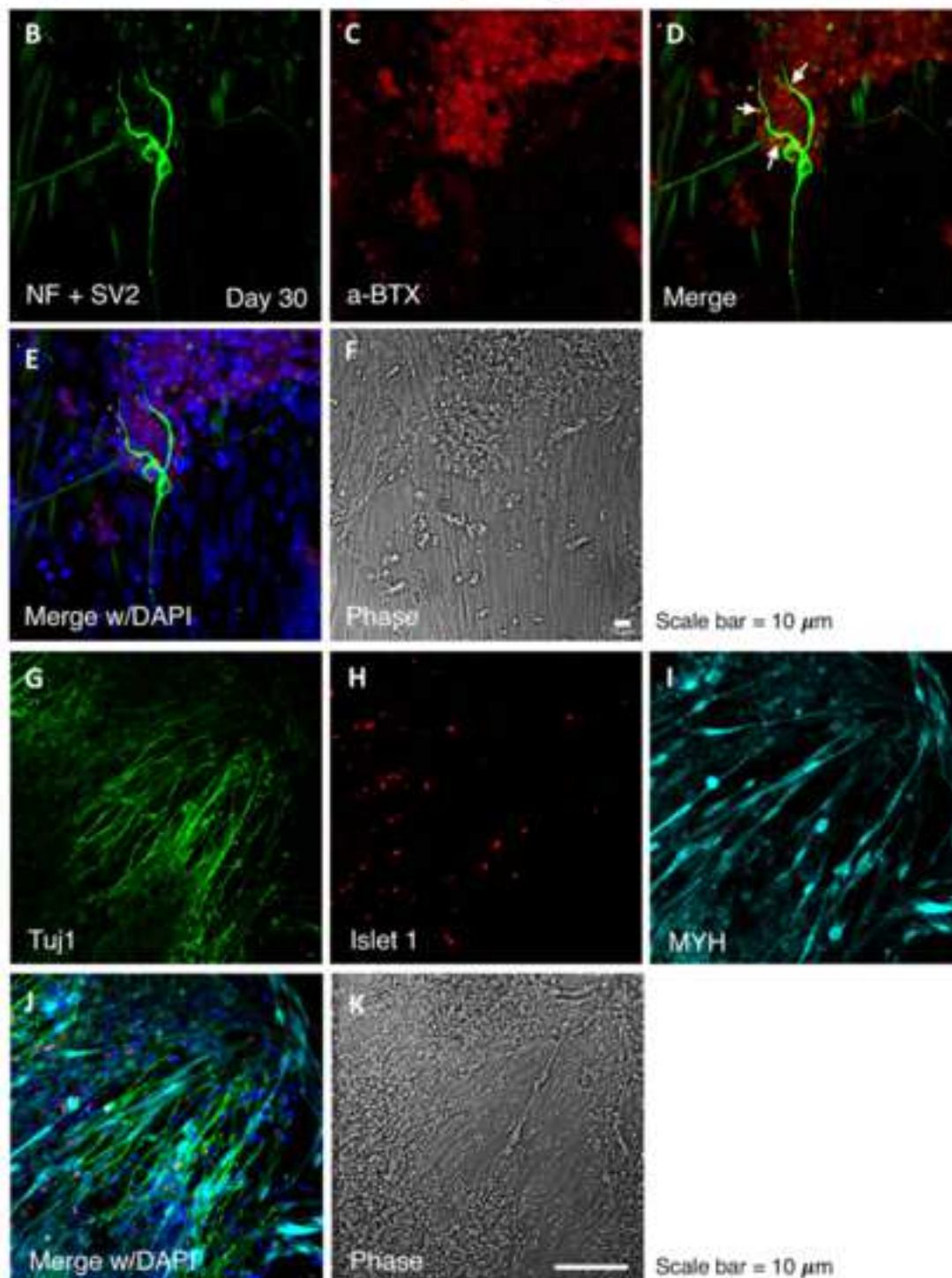
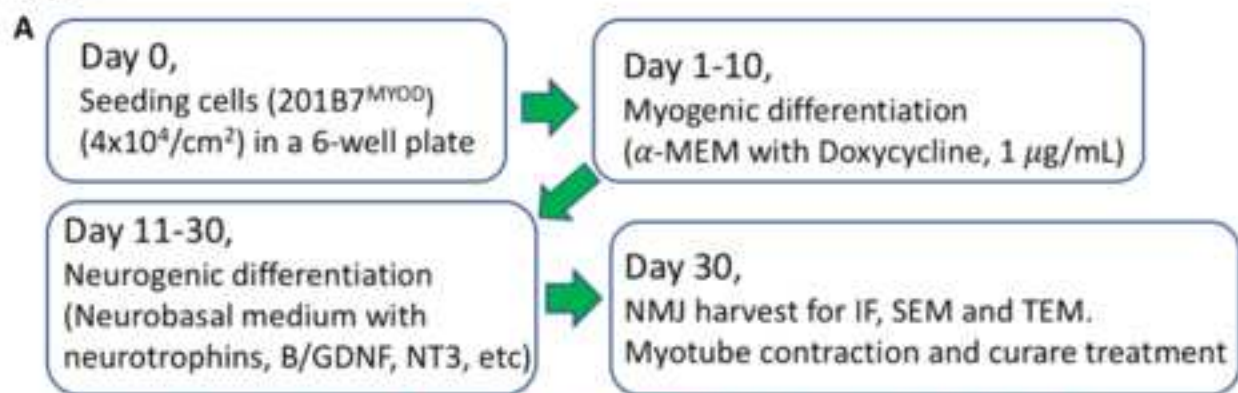


Figure 2

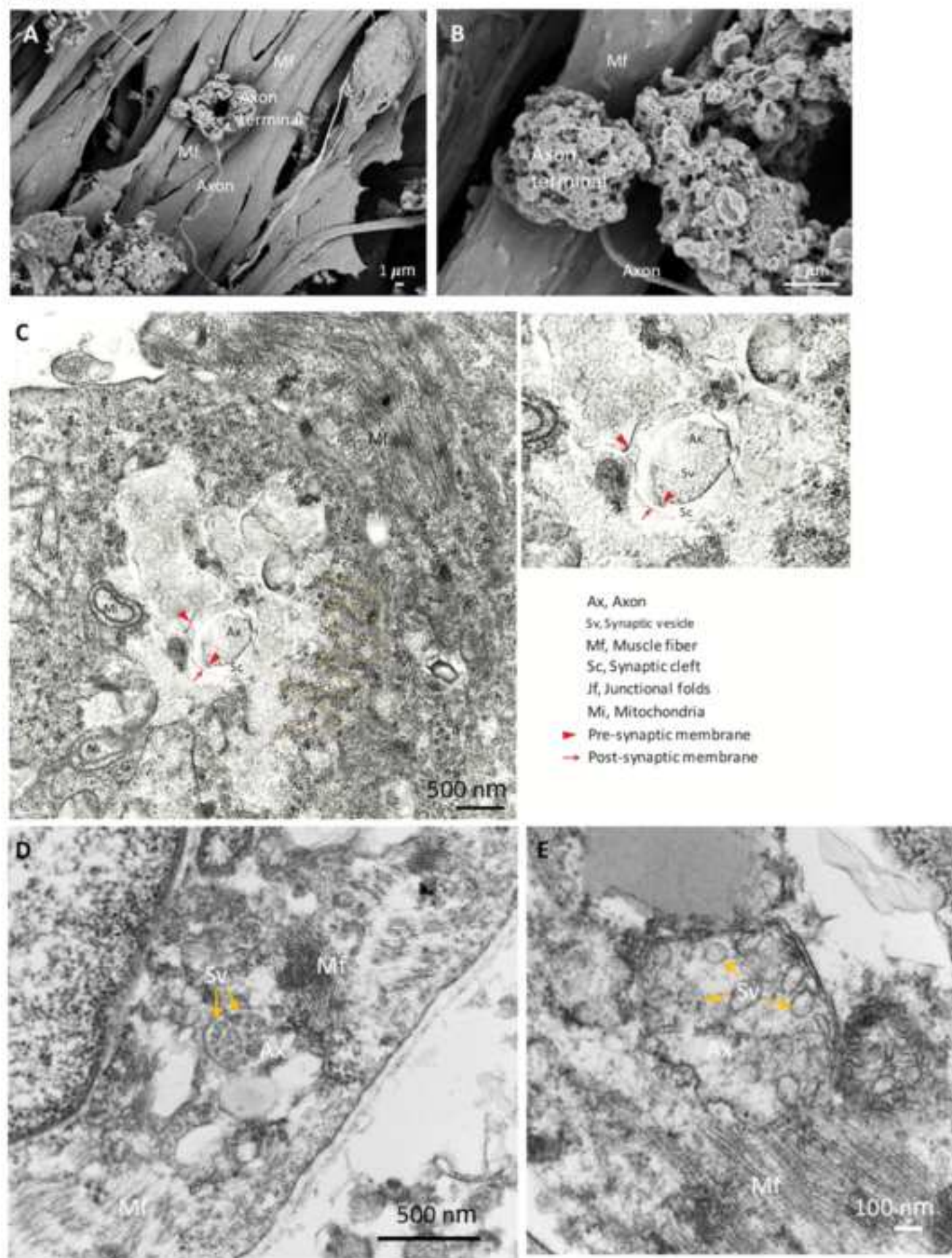
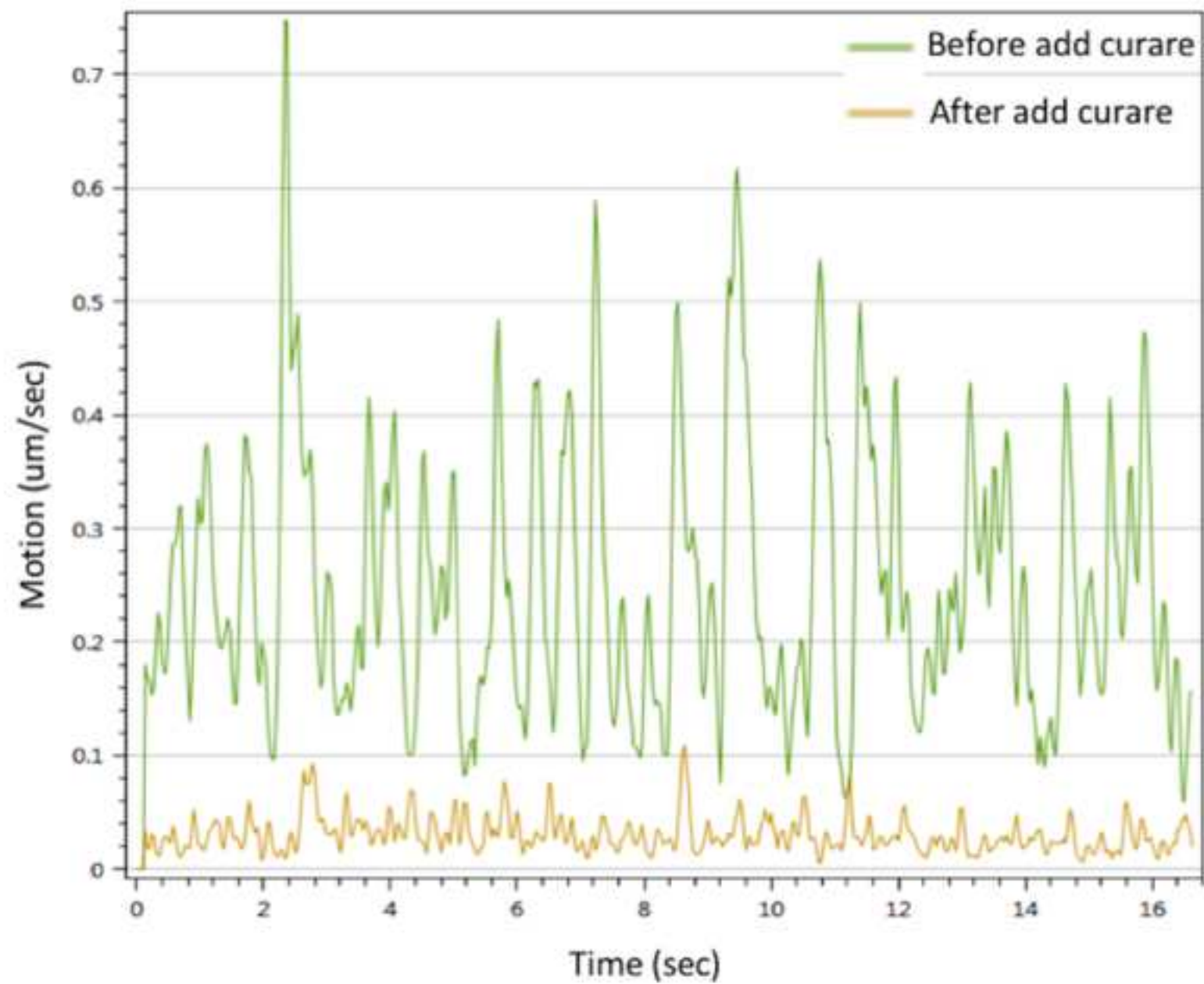
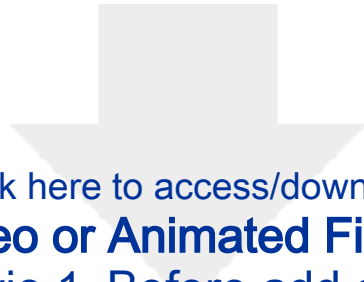


Figure 3

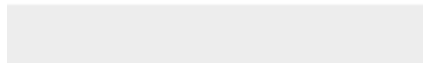


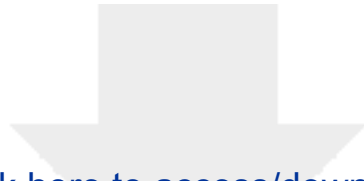


[Click here to access/download](#)

Video or Animated Figure

Suppl movie 1_Before add curare.mp4





[Click here to access/download](#)

Video or Animated Figure

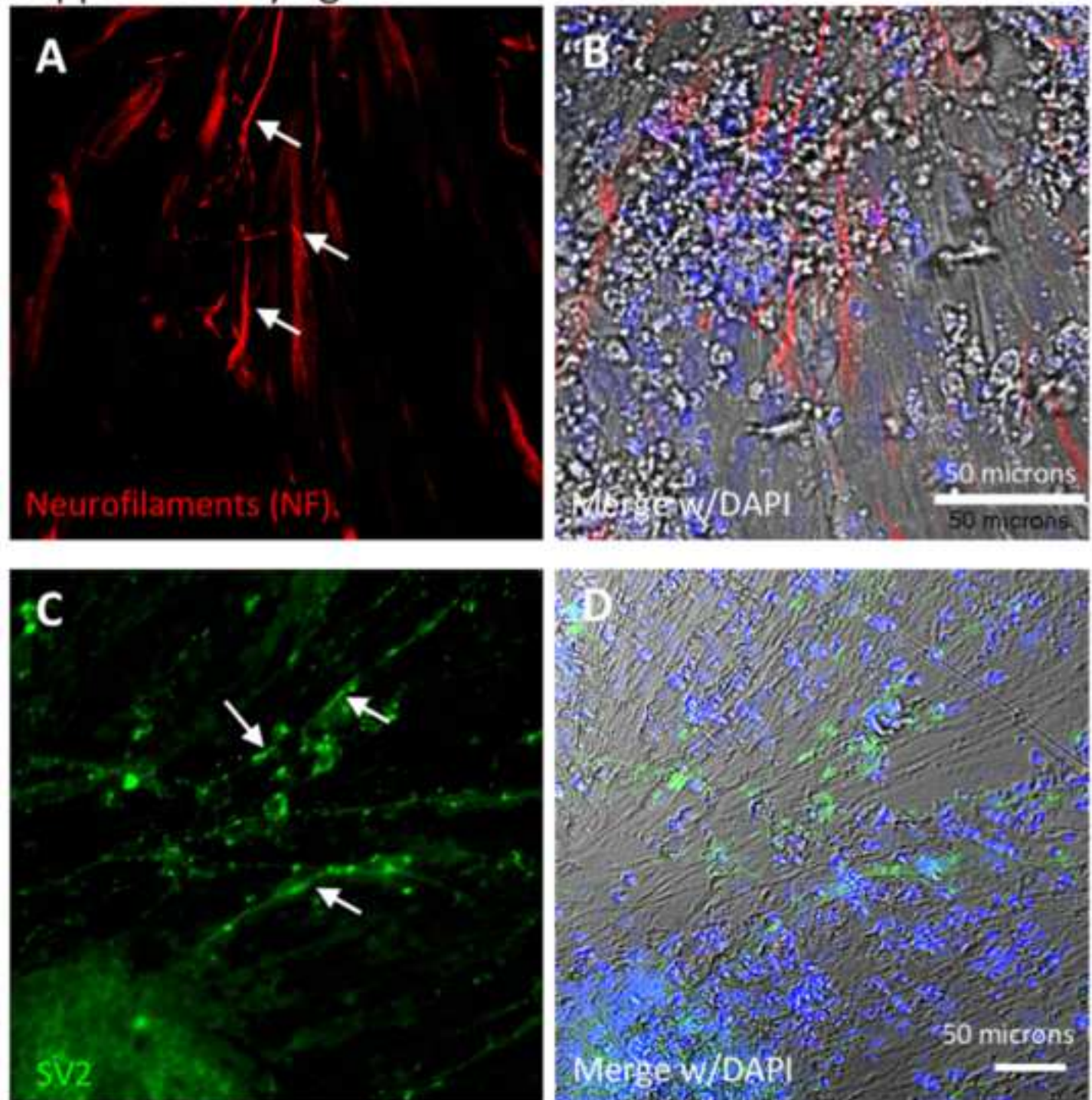
Suppl movie 2_After add curare.mp4



Myogenic differentiation medium (MDM)	MEM-alpha	500mL
	100mM 2-ME	1117µL
	Doxycycline	1µg/mL
	KSR	56mL (final to 10%)
	Pen/Strep	2.5mL
	total	560mL
✕100mM 2-mercaptoethanol	2-mercaptoethanol	7µL
	d.d. water	993µL
	total	1000µL
NMJ medium	Neurobasal medium (NB)	500mL
	B27	1x (stock in 50x)
	BDNF	10ng/mL
	GDNF	10ng/mL
	N2	1x (stock in 100x)
	NT3	10ng/mL
	Pen/Strep	2.5mL

Medium, growth factors and reagents	Item	Brand	Cat. Number	
	2-mercaptoethanol	Nacalai tesque	21418-42	
	B27, Gibco	Gibco	12587-001	
	BDNF	R & D Systems	248-BD	
	Cell detachment solution, Accumax	STEMCELL Technologies	#07921	
	Critical point dryer	Hitachi	ES-2030	
	Doxycycline	Takara	631311	
	ECM, Matrigel (growth factor reduced)	Corning	356230	
	GDNF	R & D Systems	212-GD	
	Gelation, IP gel	Geno Staff	PG20-1	
	Ions coater	JEOL	JEC3000FC	
	iPSC medium, mTeSR	STEMCELL Technologies	85850	
	KnockOut SR (KSR)	Gibco	10828-028	
	live cell microscopy	Nikon	Eclipse Ti microscop e	
	MEM-alpha	Gibco	12571-071	
	Motion vector analysis software	Sony	SI8000	
	N2, Gibco	Gibco	17502-048	
	Neurobasal medium	Gibco	21103-049	
	NT3	R & D Systems	267-N3	
	Primate ES cell medium	ReproCell	RCHEMD001	
	SEM	Hitachi	S-4700	
	TEM	Hitachi	H7650	
	Y27632	Wako Chemicals GmbH	253-00513	
Antibodies		Brand	Cat. Number	Dilutions
		Molecular Probes	B3545	0.5 ug/ml
	Islet 1	DSHB	40.2D6	1/100
	Myosin heavy chain (MYH)	MilliporeSigma	A4.1025	1/300
	Neurofilaments (NF)	MilliporeSigma	MAB5254	1/500
	S-100	Abcam	ab14849	1/300
	Synaptic vesicle protein 2 (SV2)	DSHB	SV2	1/50
	Tuj1	Covance	MMS435P	1/1000

Supplementary figure 1



Supplementary figure 2

