

Journal of Visualized Experiments

Assessment of Stress Effects on Cognitive Flexibility Using an Operant Strategy Shifting Paradigm --Manuscript Draft--

Article Type:	Invited Methods Collection - JoVE Produced Video
Manuscript Number:	JoVE61228R2
Full Title:	Assessment of Stress Effects on Cognitive Flexibility Using an Operant Strategy Shifting Paradigm
Keywords:	sex differences; cognitive flexibility; stress; prefrontal cortex; attention; perseverative errors
Corresponding Author:	Laura Grafe Bryn Mawr College Bryn Mawr, PA UNITED STATES
Corresponding Author's Institution:	Bryn Mawr College
Corresponding Author E-Mail:	Lgrafe@brynmawr.edu
Order of Authors:	Andrew Gargiulo Ariel Li Laura Grafe
Additional Information:	
Question	Response
Please indicate whether this article will be Standard Access or Open Access.	Standard Access (US\$2,400)
Please indicate the city, state/province, and country where this article will be filmed . Please do not use abbreviations.	Bryn Mawr, PA, USA

TITLE:

Assessment of Stress Effects on Cognitive Flexibility Using an Operant Strategy Shifting Paradigm

AUTHORS AND AFFILIATIONS:

Andrew Gargiulo¹, Ariel Li¹, Laura A. Grafe¹

¹Department of Psychology, Bryn Mawr College, Bryn Mawr, PA, USA

Corresponding Author:

Laura A. Grafe (Lgrafe@brynmawr.edu)

Email Addresses of Co-Authors:

Andrew Gargiulo (Agargiulo1@brynmawr.edu)

Ariel Li (xli5@brynmawr.edu)

KEYWORDS:

sex differences, cognitive flexibility, stress, prefrontal cortex, attention, perseverative errors

SUMMARY:

Stressful life events impair cognitive function, increasing the risk of psychiatric disorders. This protocol illustrates how stress affects cognitive flexibility using an automated operant strategy shifting paradigm in male and female Sprague Dawley rats. Specific brain areas underlying particular behaviors are discussed, and translational relevance of results are explored.

ABSTRACT:

Stress affects cognitive function. Whether stress enhances or impairs cognitive function depends on several factors, including the 1) type, intensity, and duration of the stressor; 2) type of cognitive function under study; and 3) timing of the stressor in relation to learning or executing the cognitive task. Furthermore, sex differences among the effects of stress on cognitive function have been widely documented. Described here is an adaptation of an automated operant strategy shifting paradigm to assess how variations in stress affect cognitive flexibility in male and female Sprague Dawley rats. Specifically, restraint stress is used before or after training in this operant-based task to examine how stress affects cognitive performance in both sexes. Particular brain areas associated with each task in this automated paradigm have been well-established (i.e., the medial prefrontal cortex and orbitofrontal cortex). This allows for targeted manipulations during the experiment or the assessment of particular genes and proteins in these regions upon completion of the paradigm. This paradigm also allows for the detection of different types of performance errors that occur after stress, each of which has defined neural substrates. Also identified are distinct sex differences in perseverative errors after a repeated restraint stress paradigm. The use of these techniques in a preclinical model may reveal how stress affects the brain and impairs cognition in psychiatric disorders, such as post-traumatic stress disorder (PTSD) and major depressive disorder (MDD), which display marked sex differences in prevalence.

INTRODUCTION:

In humans, stressful life events can impair cognitive function (i.e, cognitive flexibility¹), which denotes the ability to adapt cognitive processing strategies to face new conditions in the environment². Impairment in cognition precipitates and exacerbates many psychiatric disorders, such as Post Traumatic Stress Disorder (PTSD) and Major Depressive Disorder (MDD)^{3,4}. These disorders are twice as prevalent in females⁵⁻⁸, yet the biological basis for this disparity remains unknown. Aspects of executive functioning in humans can be assessed using the Wisconsin Card Sorting Task, a demonstration of cognitive flexibility². Performance in this task is impaired in patients with PTSD⁹ and MDD¹⁰, but the neural basis of this change can only be examined by brain imaging¹¹.

Advances in understanding how stress affects the brain have been made through the use of animal models, particularly rodents. As cognitive flexibility is affected in stress-related diseases, it is an exceptionally relevant phenotype to examine in rodents. To date, most stress neurobiology literature has used an alternative cognitive flexibility paradigm (sometimes referred to as the digging task)¹²⁻¹⁵. While this task has been extensively vetted, it requires more time and effort by the experimenter to train rodents. Adapted and described here is a well-established automated set-shifting protocol¹⁶ to assess cognitive flexibility in male and female Sprague Dawley rats using various stress models^{17,18}. The procedure requires minimal oversight by the experimenter and allows multiple rats to be tested simultaneously. In addition, unlike other versions of this automated task¹⁹, the adaptation of this paradigm only requires 3 days of training and includes an efficient programmed data analysis.

Whether stress enhances or impairs cognitive function depends on the type, intensity, and duration of the stressor, as well as the timing of the stressor in relation to learning or executing a cognitive task^{20,21}. Thus, the protocol incorporates stress procedures both before and after the operant training. It also examines representative results from stress studies. In addition, the brain regions underlying particular aspects of set-shifting have been well-established^{2,16,22}; thus, the report also describes how to target and assess particular brain regions during or after the stress and strategy shifting procedures.

There has been limited research on directly examining sex differences in cognitive flexibility^{18,23}. The protocol describes how to 1) incorporate both male and female rats into the experimental paradigm, then 2) track estrous cycles before and during the procedures in freely cycling females. Prior studies have indicated that stress before operant training can lead to sex-specific deficits in cognitive flexibility in rats¹⁷. Particularly, female rats exhibit disruptions in cognitive flexibility after stress, whereas cognitive flexibility improves in male rats after stress¹⁷. Interestingly, a major hallmark of stress-related psychiatric disorders, which have a sex-biased incidence in humans, is cognitive inflexibility. These results suggest that females may be more vulnerable to this type of cognitive impairment than males. The use of these techniques in animal models will shed light on the effects of stress on the brain and how it impairs cognition in psychiatric disorders in humans.

PROTOCOL:

All procedures in this study were approved by the Institutional Animal Care and Use Committee (IACUC) at Bryn Mawr College.

1. Animal preparation

1.1. Acquire male and female adult Sprague Dawley rats.

NOTE: The rats can be delivered before 65 days of age, but do not begin procedures until after this point to ensure that both males and females are fully mature.

1.2. Pair-house same-sex rats for as long as possible, as long-term isolation is a stressor²⁴. For food restriction, singly house rats just prior to the operant strategy shifting protocol.

1.3. After 1 week of acclimation, gently begin to handle rats for 3–5 min per day. Collect the body weight of each rat. Additionally, if interested in assessing how gonadal hormones may affect the results, collect vaginal lavage for female rats (described in section 2).

1.4. Before food restriction procedures begin, obtain approval from the institutional IACUC or other regulatory body. Restrict (from food) animals that will be run in the operant strategy shifting paradigm at least 3 days before the training begins so that they successfully learn the task. Ensure that water is always freely available.

1.4.1. If employing a stress procedure for more than 3 days before training, adjust the food restriction to match the number of days of stress (e.g., 5 days of restraint plus food restriction²⁵).

1.4.2. Each day, deliver 80% of the normal daily food intake (i.e., 4 g of food per 100 g of body weight)²⁶. Use the daily weight collection for the rat to calculate how much food to give each day.

1.4.3. Continue the food restriction through the training and testing days. However, do not place food in the home cage until after the rat has completed training or testing for the day, or else they will not be motivated to perform the tasks for a food pellet reward. Ensure that the timing of food delivery to rats upon completion of the task is fairly unpredictable since this helps to avoid reduced motivation to perform in the operant chamber (in favor of simply waiting for food in the home cage afterwards).

NOTE: Animals undergoing the restraint stress paradigm do not exhibit significantly greater weight loss than control, unstressed subjects. However, various stress procedures may themselves induce weight loss, resulting in rats receiving less food than unstressed counterparts during body weight-based food restriction. This may present an additional,

confounding stressor. If this appears to be the case, alternatively use a fixed amount of food given to each subject, regardless of weight²⁷.

2. Vaginal lavage

NOTE: Gonadal hormones (i.e., estrogen and progesterone) are known to affect the stress response and cognition^{28–30}. These hormones fluctuate over the estrous cycle of female rats³¹. If interested in tracking the estrous cycle of freely cycling female rodents to correlate with stress or cognitive flexibility data, collect vaginal lavage as described below. Representative data considering estrous cycle stage are not provided.

2.1. To obtain vaginal lavage samples from females, gather warm water in a clean beaker, a glass eyedropper, a “lavage” slide (microscope slide with acrylic paint circles to hold the lavage sample), and one empty beaker.

2.2. Fill the eyedropper with a small amount of warm water (~0.5 mL), then insert the tip into the vagina of the female rat (by lifting by its tail). Expel the sterile water 2x–3x and expel the collected fluid onto a microscopic slide. Do not overflow the lavage slide circle.

2.3. Expel any excess liquid into the empty beaker. Label the lavage slide with rat numbers and put the samples from each rat in that order so it is clear which sample belongs to each rat.

2.4. Thoroughly rinse the eyedropper by pipetting clean warm water and dispensing it into the “excess” beaker several times before filling the eyedropper to sample the next rat.

2.5. Carefully carry the lavage slide to a brightfield microscope to image the lavage sample and classify the day within the estrous cycle as described in Becker et al³¹.

NOTE: Ideally, lavaging should be done for a few weeks to properly track a female’s cycle and should be performed at a very similar time each day to control for circadian rhythms.

Preferably, this procedure should be performed before stress and operant strategy shifting procedures. Data for female rats can be analyzed post-hoc according to estrous cycle day (consider days of cycle when stress is performed and/or day of cycle when testing occurs).

3. Equipment and software

3.1. Use operant chambers for behavioral training and testing.

3.1.1. Ensure that the chambers contain at least two retractable levers with two stimulus lights above, a house light, and a dispenser for reinforcement for these tasks.

3.1.2. Check that the levers are on the either side of the central reinforcement delivery area with one stimulus light above each lever.

3.1.3. Use the house light to illuminate the chamber without interfering with detection of the light stimulus (it is best if the house light is on the back wall of the chamber, opposite to the levers and stimulus lights).

3.2. Use dustless food pellets (here, 45 mg pellets are used: 18.7% protein, 5.6% fat, and 4.7% fiber) for reinforcement in food-restricted rats. Do not use pellets high in sucrose or fat (unless there is interest in how stress affects palatable food intake).

3.3. Control the presentation of stimuli, lever operation, and data collection from a computer with software capable of operating the chamber (**Table of Materials**).

NOTE: For information related to coding of programs using this software, contact the authors. MED-PC scripts are included as supplemental files. This software collects information about the animal's responses for each trial (which lever is pressed, whether it is correct/incorrect/no response, and latency to make the choice). From this information, users can calculate various measures in the behavioral paradigm, as described in the behavioral analysis section.

3.4. Perform training/testing at the same time each day to control for circadian rhythms in stress hormones³² (and other relevant measures).

3.5. Fill the bottom tray of each operant box with fresh bedding to collect feces/waste. Following each session, dump each tray, clean trays with alcohol wipes, and replace with fresh bedding before placing a new animal in the chamber.

4. Stress procedures

4.1. Decide whether the stress procedure should be performed before, during, and/or after training on the operant strategy shifting paradigm (e.g., 5 days of restraint stress prior to 3 days of operant training vs. 3 days of operant training followed by a single restraint and testing).

4.2. Execute the stress procedure at the same time daily with respect to operant training. (e.g., 30 min of restraint stress starting at 9 A.M., followed by placement in the operant chamber).

4.3. Perform the stress procedures in a separate room from both the colony room and strategy shifting paradigm rooms (to ensure there are no confounding factors associated with witness stress)³³. Briefly, place the rat in a Broome-style transparent restraint tube and seal the opening, taking care not to pinch the limbs or tail.

NOTE: Estimate how long the first group of rats will spend in the operant chambers. This will vary depending on training vs. test day; however, after running several cohorts, an average time to complete each task to estimate future tasks can be calculated.

4.4. Depending on how many operant chambers are available, stagger the stress procedure for subjects. For example, four rats undergo restraint stress and are placed in four operant

chambers. One hour later, four more animals undergo stress procedures to be followed by the operant chamber.

5. Training

NOTE: This paradigm is modified from the operant set-shifting procedure developed by Floresco et al. such that it can be completed in 3 days¹⁹. Training procedures for rats require 3 days (1 day to learn each task as described below). It is rare that a rat does not learn these tasks. If a rat fails to learn each task, it should be excluded from the final study. See **Figure 1A** for a visual depiction of the training paradigm described below.

5.1. Before placing the rat in the chamber, ensure that there are enough food pellets in the dispenser and that the operant boxes are properly functioning. To accomplish this, load and initiate a training or test day program in an empty chamber, manually testing that the correct lever appropriately delivers one reward per lever press.

5.2. Training the rat to press each lever

5.2.1. Before placing the rat in the box for the first day of training, manually set one food pellet reward on the correct lever, as designated upon loading the training procedure within each chamber.

5.2.2. Train the rat using a fixed ratio (FR-1) schedule, such that each correct lever press is rewarded with one reinforcement. Counterbalance the correct lever per day across subjects and/or experimental conditions (shaping only one lever at a time) by designating the correct lever upon loading the training procedure on the computer operating the chambers.

5.2.3. Allow the rat to press the lever until it reaches the criterion by pressing the correct lever 50x, usually completing the task between 30–45 min.

5.2.4. The following day force the rat to perform this task on the opposite lever using the same program as the first day of training, but designate the opposite lever as the correct one. There is no need to “shape” the lever with a food pellet on this day of training. Typically, this criterion is quickly acquired after rats have learned to press the first lever.

5.3. Training the rat to respond to the light cue

5.3.1. On the third day of training, illuminate the light above both levers for 15 s trials, during which the rat may press one of lever to potentially receive a food pellet reward. During the light discrimination task, this program will randomly select which lever is correct on a trial-by-trial basis.

5.3.2. If the rat presses the correct lever, ensure that the lights remain illuminated for 3 s and the reward is delivered, followed by a 5 s period, during which the lights are shut off preceding

the next trial. If the rat presses the incorrect lever, ensure that no reward is delivered and that lights are shut off for 10 s preceding the next trial.

5.3.3. Following this last day of training, calculate “side bias” to determine if the rat has a preference for the left or right lever by dividing the number of presses of one lever divided by the total number of lever presses. On the test day, the rat will start on its least preferred side to ensure that it is learning the specific response-reward contingency, rather than responding to a preferred lever.

6. Testing

NOTE: See **Figure 1B** for a visual depiction of the testing paradigm described below.

6.1. On day 4 (test day), place the rat in the operant chamber following stress procedures and test them in side discrimination, side reversal, and light discrimination tasks serially. Ensure that the light discrimination task only illuminates the light above the “correct” lever. In each task, rats must consecutively achieve eight correct trials to complete each discrimination without pressing the unrewarded, incorrect lever. An incorrect lever press will reset this chain of trials.

6.1.1. Test rats using the side discrimination task. Using the side discrimination program, reward the rat for pressing the lever on its least preferred side as determined from the third day of training, regardless of the light cue. The task ends upon pressing the correct lever 8x consecutively (excluding omissions).

6.1.2. Perform the side reversal test by running rats using the side discrimination program again, but this time designating the lever opposite to the correct one from the side discrimination task as correct. Ensure that the rat is rewarded for pressing this lever, regardless of the light cue. The task ends upon pressing the correct lever 8x consecutively (excluding omissions).

6.1.3. Perform the light discrimination task, which rewards the rat for pressing the lever with the light illuminated above. Each operant testing is complete upon pressing the correct lever 8x consecutively (excluding omissions).

NOTE: Based on previous studies, these tasks encode a minimum of 30 trials, regardless of consecutive presses, to ensure that rats have sufficient time to learn the rules of each task¹⁸. Thus, if the rat consecutively achieves eight correct trials before 30 trials have occurred, the task will remain engaged until 30 trials are completed.

7. Behavioral analysis

NOTE: The data acquired for each animal on the test day are automatically recorded and saved by the computer, as long as a MED-PC script for each task been initiated and allowed to complete (see supplementary materials for MED-PC scripts).

7.1 Open the data for each test day task (side discrimination, side reversal, and light discrimination) using the computer program. The main measures recorded by the program are trials to criterion, errors in criterion, and time to criterion. These measures are described in detail below.

NOTE: The authors have generated a MATLAB script that allows for automation of the analysis process as well as analysis of perseverative vs. regressive errors (contact authors for code information to streamline data analysis).

7.1.1. Use trials to criterion (which refers to the total number of trials [not including omissions] necessary for the rat to consecutively complete eight correct trials, including those eight trials) as the main indicator of accuracy. This data is located in the first column in array B in a data file generated by the MED-PC script for any of the tasks on test day.

7.1.2. Examine the total errors made during each task. This data is located in the third column of array B in a data file generated by the MED-PC script for any of the tasks on test day. These errors are also categorized into perseverative or regressive errors. Perseverative errors are committed when the rat continues to follow the earlier rule from the previous task. Regressive errors are committed after it has disengaged from the previous rule but continues to try to acquire the new rule (for more details on how these types of errors are calculated, refer to the published method¹⁸).

7.1.3. If the rat did not respond to a light cue within 15 s, the trial is categorized as an omission, not counting it towards the total number of trials to criterion. Calculate this by first adding together the number of correct responses (located in the second column of array B in data file) and number of errors (located in the third column of array B in data file). Next, subtract this number from the total number of trials to criterion (this is the last number in the first column of array B in a data file, different from the trials to criterion).

7.1.4. Use start and finish times recorded by the program (located at the top of a data file generated by the MED-PC script for any of the tasks on test day) to calculate time to criterion. Latency to the first lever press can also be calculated from the data file by subtracting the variable K (elapsed time in seconds from the first lever press) from the time to criterion.

7.1.5. Average the data for each behavioral measure for rats within the same treatment group. Perform appropriate statistical analyses (depending on how many variables are being examined).

8. Brain substrates

8.1. Determine an interested brain area and/or aspect of cognitive flexibility. For example, if stress increases perseverative errors in the side reversal task, the orbitofrontal cortex (OFC) may be of particular interest, as previous lesion studies have indicated this brain region plays a

role in many forms of reversal learning (i.e., spatial reversal tested in the side reversal task)^{34–36}. In this example, sacrifice rats after the strategy shifting paradigm is completed and examine c-fos (measure of neural activation³⁷) in the OFC using described immunohistochemical methods²⁵ and described briefly here.

8.1.1. First, extract brains from animals and cut into 40 µm slices.

8.1.2. Wash the tissue in phosphate-buffered saline (PBS) 4x for 5 min each, then incubate in 0.3% hydrogen peroxide for 10 min to quench endogenous peroxidases.

8.1.3. Wash tissue in PBS 2x for 5 min each, then incubate in mouse anti-c-fos primary antibody (1:500), 3% normal donkey serum (NDS), and 0.3% Triton X overnight.

8.1.4. The next day, wash tissue in PBS 3x for 5 min each, then incubate in biotin-SP-conjugated donkey anti-mouse sary antibody (1:500) for 2 h.

8.1.5. Wash tissue in PBS 3x for 5 min each, then incubate in avidin-streptavidin AB complex for 1 h.

8.1.6. Wash tissue in PBS 3x for 5 min each, then incubate in DAB solution for up to 10 min as tissue undergoes an oxidation chromogenic reaction.

8.1.7. Wash tissue in PBS 3x for 5 min each, then mount the brain slices on glass microscope slides.

8.1.8. Coverslip the tissue using toluene based mounting medium and image using a brightfield microscope.

NOTE: Here, as reflected in the representative results, rats are sacrificed 30 min after the strategy shifting paradigm ends, roughly 60–90 min after the reversal task has been completed (depending on each rat's performance in the light task). This should represent optimal timing for c-fos expression³⁸, reflecting performance in the reversal task.

8.2. Alternatively, cannulate a specific brain area for drug injection or viral injection prior to the execution of stress or the operant strategy shifting paradigm.

NOTE: Researchers may want to examine how manipulating neural substrates alters the effects of stress on cognitive flexibility. For example, researchers can block a particular neurotransmitter receptor in the prefrontal cortex prior to testing.

REPRESENTATIVE RESULTS:

The adapted automated operant strategy shifting paradigm outlined above was used to determine if repeated restraint stress affects cognition in male and female Sprague Dawley

rats. Representative behavioral data are described in **Figure 2** below. In short, control and repeatedly restrained rats performed this operant strategy shifting test, which consisted of a series of tasks: side discrimination, side reversal, and light discrimination.

Trials to criterion for each task are depicted in **Figure 2A**. Typically, better performance on each task was represented by a reduced number of trials to criterion. These data indicate that, following acute restraint, males completed the side reversal task in significantly fewer trials than unstressed, control males. Conversely, stressed females required a significantly greater number of trials to complete the side reversal task. These results suggest that males exhibited improved performance following stress, whereas females exhibited impaired performance. In the light discrimination task, stress increased the number of trials to criterion compared to control females, thereby impairing performance in females but not males in this task.

The total number of errors made for each attention task is depicted in **Figure 2B**. Consistent with the number of trials to criterion, stressed males made significantly fewer errors than control males, whereas stressed females made more errors in the side reversal task. Furthermore, in the light discrimination task, females also made significantly more errors. In sum, these data suggest that repeated stress improves cognitive performance in males but impairs cognitive performance in females.

Total errors were further categorized into perseverative or regressive errors in **Figure 2C** (for a distinction between these two types of errors, refer to section 7 of the protocol). Interestingly, stressed males made fewer perseverative errors in the side reversal task than control males. On the other hand, in both the side reversal and light discrimination tasks, stressed females made a greater number of perseverative errors than control females. There were no differences between the treatment groups in the number of regressive errors made during either task.

Omissions in each trial and time to reach criterion are shown in **Figure 2D** (for more information on how these were calculated, refer to section 7 of the protocol). These measures were evaluated in the side reversal task only, as this task exhibited the largest sex differences. Stressed females made a higher percentage of omissions compared to all other treatment groups. In addition, while stress appeared to decrease the time to complete the side reversal task in males, stress prolonged completion of the task in females. In sum, repeated stress impaired cognitive flexibility in females but not males.

Brain substrates underlying cognitive flexibility are depicted in **Figure 3**. As stark sex differences were observed in the side reversal task, the brain areas underlying this task were examined to determine whether they displayed similar sex differences in neural activity. As previously discussed, lesion studies have indicated that the orbitofrontal cortex (OFC) mediates the side reversal task³⁴. Thus, c-fos, a measure of neural activation³⁷, was labeled in the OFC at 30 min after the completion of strategy shifting, which should have reflected performance in the side reversal task³⁸. However, it is possible that OFC may also play a role in the extradimensional strategy shifting component of this task³⁹. Thus, it is important to perform the sacrifice at the appropriate time to reflect brain activity during a particular task within the operant strategy

shifting paradigm. Here, stress induced a significant increase in neuronal activation in the OFC of males compared to controls. However, stress induced a significant decrease in neuronal activation in the OFC of females compared to controls. Furthermore, in males, OFC activation and trials to criterion were negatively correlated; specifically, higher OFC activation was associated with fewer trials to criterion. In contrast, there was no correlation between OFC activation and performance in females, suggesting that the OFC was disengaged during these performances.

FIGURE LEGENDS:

Figure 1: Schematic of the operant strategy shifting paradigm during training and test days.

Figure 2: Representative behavioral data from operant strategy shifting paradigm. (A) Trials to criterion for each task on test day. In the side reversal task, stress improved performance in males but impaired performance in females. In the light discrimination task, stress weakened performance in females, while it did not affect males. **(B)** Number of errors for each task on test day. Stress reduced the number of errors made in males but increased errors in females in both side reversal and light discrimination tasks. **(C)** Perseverative and regressive error categorization. Stress decreased perseverative errors made in males but increased perseverative errors made in females in both side reversal and light discrimination tasks. **(D)** Percent trials omitted and time to criterion in the side reversal task. Stress increased the percent omissions in female rats. Stress decreased the time required by males but increased the time required by females to complete the task. Statistics were calculated using two-way ANOVA followed by Tukey's t-test ($n = 12$ rats per group; error bars represent SEM; $\#p \leq 0.10$, $*p < 0.05$). This figure has been modified from a previous publication¹⁷.

Figure 3: Representative neural activation after operant strategy shifting paradigm. (A) OFC activation after strategy shifting task. Representative images of immunohistochemical 3,3'-diaminobenzidine (DAB) staining using an antibody against c-fos in the OFC visualized using brightfield microscopy, then quantified. Stress significantly increased activation (demonstrated by the number of c-fos-expressing cells) in the OFC of males, while it decreased activation in females. Scale bar in bottom-right image panel represents 200 μm . Statistics were calculated using two-way ANOVA followed by Tukey's t-test ($n = 12$ rats per group, 6–8 sections of OFC analyzed per rat; error bars represent SEM; $*p < 0.05$). **(B)** Trials to criterion in the side reversal task correlated with OFC activation. Males displayed a significant negative correlation, whereas females did not.

DISCUSSION:

The protocol demonstrates how to measure the effects of stress on cognitive function. Specifically, a modified operant strategy shifting paradigm is used in rodents, which measures cognitive flexibility (analogous to the Wisconsin Card Sorting Task in humans)¹. Cognitive flexibility denotes the ability to adapt cognitive processing strategies to face new conditions in the environment, and it is crucial for normal daily functioning². As human studies on cognitive

flexibility are mostly limited to brain imaging¹¹, the use of this paradigm in animals will greatly advance the understanding of effects of stress on the brain and cognition.

Stress can impair cognitive function⁴⁰. In fact, this is one of the most common phenotypes in stress-related illnesses such as PTSD and MDD^{3,41}. Moreover, there are stark sex differences in the occurrence of stress-related psychiatric illnesses⁵⁻⁷, yet there is little understanding of the neurobiology behind these biased incidences. Thus, use of this operant strategy shifting paradigm in animals of both sexes may help advance the current understanding of sex differences in psychiatry.

This operant strategy shifting task allows researchers to examine key aspects of cognition relevant to psychiatric disorders. For example, perseverative errors after experimental manipulation are calculated in this paradigm. Perseveration is observed in stress-related psychiatric disorders such as PTSD, and it impairs the ability of one to learn a new set of rules, ultimately impairing working memory³. Thus, the measure of perseverative errors is translationally relevant. Moreover, omissions in attention tasks have been noted in patients with PTSD, indicating slower cortical processing³. Accordingly, omission data from this paradigm may have clinical counterparts. In sum, cognitive flexibility measured as by this experimental paradigm models key phenotypes that are observed in psychiatric disorders.

This experimental paradigm also allows for precision in targeting neural substrates underlying cognitive flexibility. For example, the literature has indicated that the prefrontal cortex (PFC) is a crucial brain region for cognitive flexibility³, including the medial prefrontal (mPFC) and orbitofrontal cortex (OFC). Of these subregions in the PFC, the OFC is important for performance in the side reversal task^{34,35}. These brain areas are also a key targets for stress-induced functional alterations^{42,43}. Interestingly, the model of stress used here does appear to play a role in the subsequent performance of rodents in tests of cognitive flexibility; thus, it should be considered in the design of future experiments. These varying responses to stress point to potentially novel mechanisms by which cognition is impacted by stress. Thus, targeting specific neurotransmitters, proteins, or activation of these brain regions may shed light on how stress affects cognition in male and female rodents. Researchers can choose to manipulate these neural substrates at different timepoints in conjunction with stress or strategy shifting, or alternatively measure neural substrates after exposure to these behavioral paradigms.

This modified operant strategy shifting task has clear advantages over other cognitive flexibility paradigms used in the stress literature (i.e., the digging task¹²⁻¹⁵), which require more time and effort by the experimenter to train rodents. This procedure requires minimal oversight by the experimenter and allows multiple rats to be tested simultaneously. In addition, unlike other versions of this automated task¹⁹, the paradigm only requires 3 days of training and includes an efficient programmed data analysis.

The operant strategy shifting paradigm does have certain limitations. One limitation is that it can only test two stimulus dimensions (e.g., left or right lever vs. light cue), whereas the digging task¹²⁻¹⁵ can test a third stimulus dimension (e.g., digging media vs. odor vs. texture). However,

the task described in this protocol still allows for testing of the rat's ability to shift to different rules, which allows testing of the cognitive flexibility constructs. In addition, it is possible to add other parameters to the operant chambers to allow for a third stimulus (e.g., an odor), but this may prolong the training required for the task.

The primary advantage of this task is its simplicity and ability to pair it with stressful or pharmacological manipulations to further understand how stress affects the brain. It should be noted that this simplicity comes with an increased difficulty that subjects face while learning to lever press, compared to the ecologically relevant digging task. While this operant task is far less labor-intensive, rodents will generally require more trials to acquire this task. However, both the digging task and this paradigm engage similar neurobiological mechanisms and thus represent valid options for the examination of cognitive flexibility^{16,44}. While there have been varied results in the literature regarding the effects of stress on cognitive flexibility using the digging task and this operant procedure^{23,25,27,45,46}, the presented method reflects the complex effects that the type, intensity, and duration of a stressor can have on cognitive function^{20,21}.

Another limitation of the task is that rodents are housed in closed opaque boxes; thus, behaviors other than those that are collected via the computer interface cannot be coded. For example, a high number of omissions by a rat may be due to behavioral inhibition inflicted by stress, or because the rat is asleep. Moreover, other stereotypical behaviors, such as grooming (which is particularly relevant in studying stress), may be interesting to analyze during the task. Mounting cameras in operant chambers may allow for this type of behavioral precision.

Overall, this report details the use of stress procedures in conjunction with an operant strategy shifting paradigm to further understand how stress affects the brain. It should be noted that, in addition to stress procedures and cognitive assessment in adults, research on different developmental stages may provide crucial information about the etiology of cognitive inflexibility. In addition to studying the effects of stress on cognitive flexibility, this simple and efficient operant strategy shifting paradigm can be paired with many experimental manipulations to investigate how the brain adapts to changing environments. Moreover, alternate experimental approaches can be used to study the neural basis of cognitive flexibility, including lesions, pharmacology, gene editing, and electrophysiology. As cognitive inflexibility is one of the key phenotypes in psychiatric disease, more research must be conducted to further understand its neurobiological substrates.

ACKNOWLEDGMENTS:

The authors would like to thank Hannah Zamore, Emily Saks, and Josh Searle for their help in establishing this operant strategy shifting paradigm in the Grafe lab. They would also like to thank Kevin Snyder for his help with the MATLAB code for analysis.

DISCLOSURES:

The authors have nothing to disclose.

REFERENCES

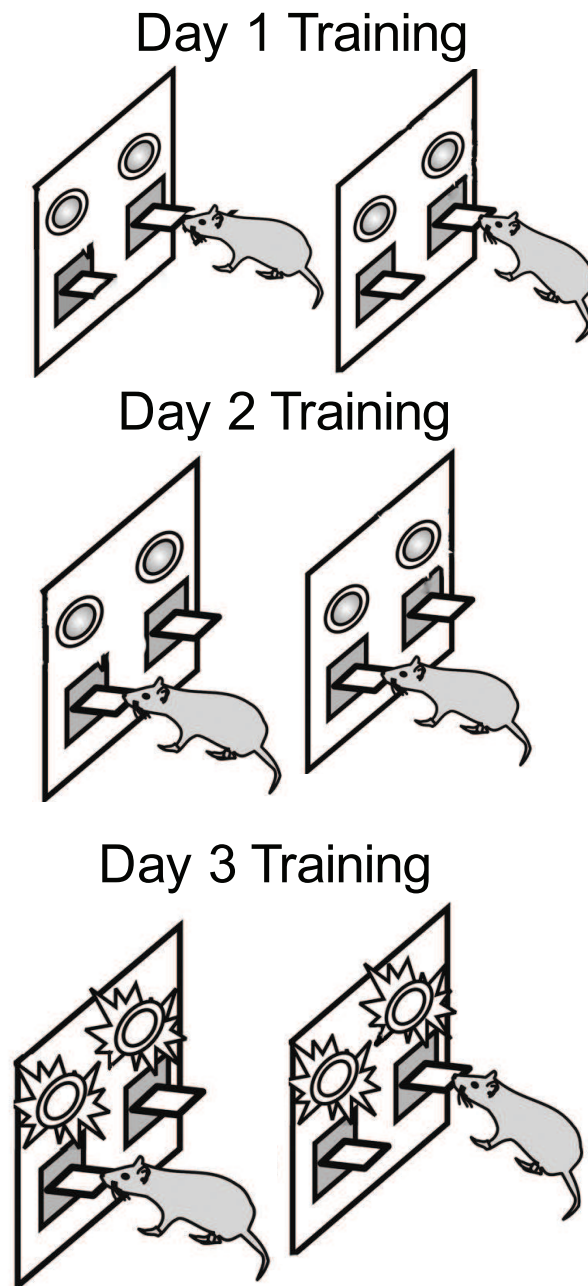
- 573 1. Hurtubise, J. L., Howland, J. G. Effects of stress on behavioral flexibility in rodents.
574 *Neuroscience*. **345**, 176-192 (2016).
- 575 2. Bissonette, G. B., Powell, E. M., Roesch, M. R. Neural structures underlying set-shifting:
576 Roles of medial prefrontal cortex and anterior cingulate cortex. *Behavioural Brain*
577 *Research*. **250**, 91–101 (2013).
- 578 3. Vasterling, J. J., Brailey, K., Constans, J. I., Sutker, P. B. Attention and memory dysfunction
579 in posttraumatic stress disorder. *Neuropsychology*. **12** (1), 125–33 (1998).
- 580 4. Bangasser, D. A., Kawasumi, Y. Cognitive disruptions in stress-related psychiatric
581 disorders: A role for corticotropin releasing factor (CRF). *Hormones and Behavior*. **76**,
582 125–135 (2015).
- 583 5. Nestler, E. J. et al. Neurobiology of depression. *Neuron*. **34** (1), 13–25 (2002).
- 584 6. Keane, T. M., Marshall, A. D., Taft, C. T. Posttraumatic stress disorder: etiology,
585 epidemiology, and treatment outcome. *Annual Review of Clinical Psychology*. **2**, 161–
586 1697 (2006).
- 587 7. Seeman, M. V. Psychopathology in women and men: focus on female hormones. *The*
588 *American Journal of Psychiatry*. **154** (12), 1641–1647 (1997).
- 589 8. Hodes, G. E., Epperson, C. N. Sex Differences in Vulnerability and Resilience to Stress
590 Across the Life Span. *Biological Psychiatry*. **86** (6), 421–432 (2019).
- 591 9. Monika, T.-B., Antoni, F., Piotr, G., Marian, M., Krzysztof, Z. Wisconsin Card Sorting Test
592 in psychological examination of patients with psychiatric disorders. *Polski merkurusz*
593 *lekarski: organ Polskiego Towarzystwa Lekarskiego*. **25 Suppl 1**, 51–2 (2008).
- 594 10. Merriam, E. P., Thase, M. E., Haas, G. L., Keshavan, M. S., Sweeney, J.A. Prefrontal cortical
595 dysfunction in depression determined by Wisconsin Card Sorting Test performance. *The*
596 *American Journal of Psychiatry*. **156** (5), 780–782 (1999).
- 597 11. Monchi, O., Petrides, M., Petre, V., Worsley, K., Dagher, A. Wisconsin Card Sorting
598 revisited: distinct neural circuits participating in different stages of the task identified by
599 event-related functional magnetic resonance imaging. *The Journal of Neuroscience: the*
600 *Official Journal of the Society for Neuroscience*. **21** (19), 7733–7741 (2001).
- 601 12. Bulin, S. E., Hohl, K. M., Paredes, D., Silva, J. D., Morilak, D. A. Bidirectional
602 optogenetically-induced plasticity of evoked responses in the rat medial prefrontal
603 cortex can impair or enhance cognitive set-shifting. *eNeuro*. **7** (1) ENEURO.0363-19
604 (2019).
- 605 13. Chaby, L. E., Karavidha, K., Lisieski, M. J., Perrine, S. A., Liberzon, I. Cognitive Flexibility
606 Training Improves Extinction Retention Memory and Enhances Cortical Dopamine With
607 and Without Traumatic Stress Exposure. *Frontiers in Behavioral Neuroscience*. **13**, 24
608 (2019).
- 609 14. Drozd, R., Rojek-Sito, K., Rygula, R. The trait ‘pessimism’ does not interact with cognitive
610 flexibility but makes rats more vulnerable to stress-induced motivational deficits: Results
611 from the attentional set-shifting task. *Behavioural Brain Research*. **335**, 199–207 (2017).
- 612 15. Birrell, J. M., Brown, V. J. Medial frontal cortex mediates perceptual attentional set-
613 shifting in the rat. *The Journal of Neuroscience: the Official Journal of the Society for*
614 *Neuroscience*. **20** (11), 4320–4 (2000).
- 615 16. Floresco, S. B., Block, A. E., Tse, M. T. L. Inactivation of the medial prefrontal cortex of the
616 rat impairs strategy set-shifting, but not reversal learning, using a novel, automated

- procedure. *Behavioural Brain Research*. **190** (1), 85–96 (2008).
17. Grafe, L. A., Cornfeld, A., Luz, S., Valentino, R., Bhatnagar, S. Orexins Mediate Sex Differences in the Stress Response and in Cognitive Flexibility. *Biological Psychiatry*. **81** (8), 683–692 (2017).
 18. Snyder, K. P., Barry, M., Valentino, R. J. Cognitive impact of social stress and coping strategy throughout development. *Psychopharmacology*. **232**(1),185-9 (2014).
 19. Brady, A. M., Floresco, S. B. Operant procedures for assessing behavioral flexibility in rats. *Journal of Visualized Experiments*. (96), e52387 (2015).
 20. Sandi, C., Pinelo-Nava, M. T. Stress and Memory: Behavioral Effects and Neurobiological Mechanisms. *Neural Plasticity*. 1–20 (2007).
 21. Shansky, R. M., Lipps, J. Stress-induced cognitive dysfunction: hormone-neurotransmitter interactions in the prefrontal cortex. *Frontiers in Human Neuroscience*. **7**, 123 (2013).
 22. Ragozzino, M. E., Detrick, S., Kesner, R. P. Involvement of the prelimbic-infralimbic areas of the rodent prefrontal cortex in behavioral flexibility for place and response learning. *The Journal of Neuroscience: the Official Journal of the Society for Neuroscience*. **19** (11), 4585–94 (1999).
 23. Liston, C. et al. Stress-induced alterations in prefrontal cortical dendritic morphology predict selective impairments in perceptual attentional set-shifting. *The Journal of Neuroscience: the Official Journal of the Society for Neuroscience*. **26** (30), 7870–4 (2006).
 24. Hatch, A., Wiberg, G. S., Balazs, T., Grice, H. C. Long-Term Isolation Stress in Rats. *Science*. **142** (3591), 507–507 (1963).
 25. Grafe, L. A., Cornfeld, A., Luz, S., Valentino, R., Bhatnagar, S. Orexins Mediate Sex Differences in the Stress Response and in Cognitive Flexibility. *Biological Psychiatry*. **81** (8), 683–692 (2017).
 26. Animal Care and Use Committee, T. J. H. U. Species Specific Information: Rat. at <<http://web.jhu.edu/animalcare/procedures/rat.html>>.
 27. Lapiz-Bluhm, M. D. S. et al. Behavioural assays to model cognitive and affective dimensions of depression and anxiety in rats. *Journal of Neuroendocrinology*. **20** (10), 1115–37 (2008).
 28. McEwen, B. S. Permanence of brain sex differences and structural plasticity of the adult brain. *Proceedings of the National Academy of Sciences*. **96** (13), 7128–7130 (1999).
 29. Manber, R., Armitage, R. Sex, steroids, and sleep: a review. *Sleep*. **22** (5), 540–55 (1999).
 30. Sherwin, B. B. Estrogen and Cognitive Functioning in Women. *Endocrine Reviews*. **24** (2), 133–151 (2003).
 31. Becker, J. B. et al. Strategies and methods for research on sex differences in brain and behavior. *Endocrinology*. **146** (4), 1650–73 (2005).
 32. Koch, C. E., Leinweber, B., Drengberg, B. C., Blaum, C., Oster, H. Interaction between circadian rhythms and stress. *Neurobiology of Stress*. **6**, 57–67 (2017).
 33. Warren, B. L. et al. Neurobiological sequelae of witnessing stressful events in adult mice. *Biological Psychiatry*. **73** (1), 7–14 (2013).
 34. McAlonan, K., Brown, V. J. Orbital prefrontal cortex mediates reversal learning and not attentional set-shifting in the rat. *Behavioural Brain Research*. **146** (1–2), 97–103 (2003).
 35. Schoenbaum, G., Saddoris, M. P., Stalnaker, T. A. Reconciling the roles of orbitofrontal cortex in reversal learning and the encoding of outcome expectancies. *Annals of the New*

- York Academy of Sciences. **1121** (1), 320–35 (2007).
36. Meunier, M. Effects of orbital frontal and anterior cingulate lesions on object and spatial memory in rhesus monkeys. *Neuropsychologia*. **35** (7), 999–1015 (1997).
 37. Zappulla, R. A., Wang, W., Friedrich, V. L., Grabel, J., Nieves, J. CNS activation patterns underlying motor evoked potentials as demonstrated by c-fos immunoreactivity. *Electroencephalography and Clinical Neurophysiology*. **43**, 155–69 (1991).
 38. Schoenenberger, P., Gerosa, D., Oertner, T. G. Temporal Control of Immediate Early Gene Induction by Light. *PLoS ONE*. **4** (12), e8185 (2009).
 39. Chase, E. A., Tait, D. S., Brown, V. J. Lesions of the orbital prefrontal cortex impair the formation of attentional set in rats. *The European Journal of Neuroscience*. **36** (3), 2368–75 (2012).
 40. Hancock, P. A., Warm, J. S. A dynamic model of stress and sustained attention. *Human Performance in Extreme Environments*. **7** (1), 15–28 (2003).
 41. Johnson, P. L., Molosh, A., Fitz, S. D., Truitt, W. A., Shekhar, A. Orexin, stress, and anxiety/panic states. *Progress in Brain Research*. **198**, 133–61 (2012).
 42. Leuner, B., Shors, T. J. Stress, anxiety, and dendritic spines: what are the connections? *Neuroscience*. **251**, 108–19 (2013).
 43. Holmes, A., Wellman, C. L. Stress-induced prefrontal reorganization and executive dysfunction in rodents. *Neuroscience and Biobehavioral Reviews*. **33** (6), 773–83 (2009).
 44. Placek, K., Dippel, W. C., Jones, S., Brady, A. M. Impairments in set-shifting but not reversal learning in the neonatal ventral hippocampal lesion model of schizophrenia: further evidence for medial prefrontal deficits. *Behavioural Brain Research*. **256**, 405–13 (2013).
 45. Nikiforuk, A., Popik, P. Long-lasting cognitive deficit induced by stress is alleviated by acute administration of antidepressants. *Psychoneuroendocrinology*. **36** (1), 28–39 (2011).
 46. Bondi, C. O., Rodriguez, G., Gould, G. G., Frazer, A., Morilak, D. A. Chronic unpredictable stress induces a cognitive deficit and anxiety-like behavior in rats that is prevented by chronic antidepressant drug treatment. *Neuropsychopharmacology*. **33** (2), 320–31 (2008).

Figure 1

A Training



B Test day

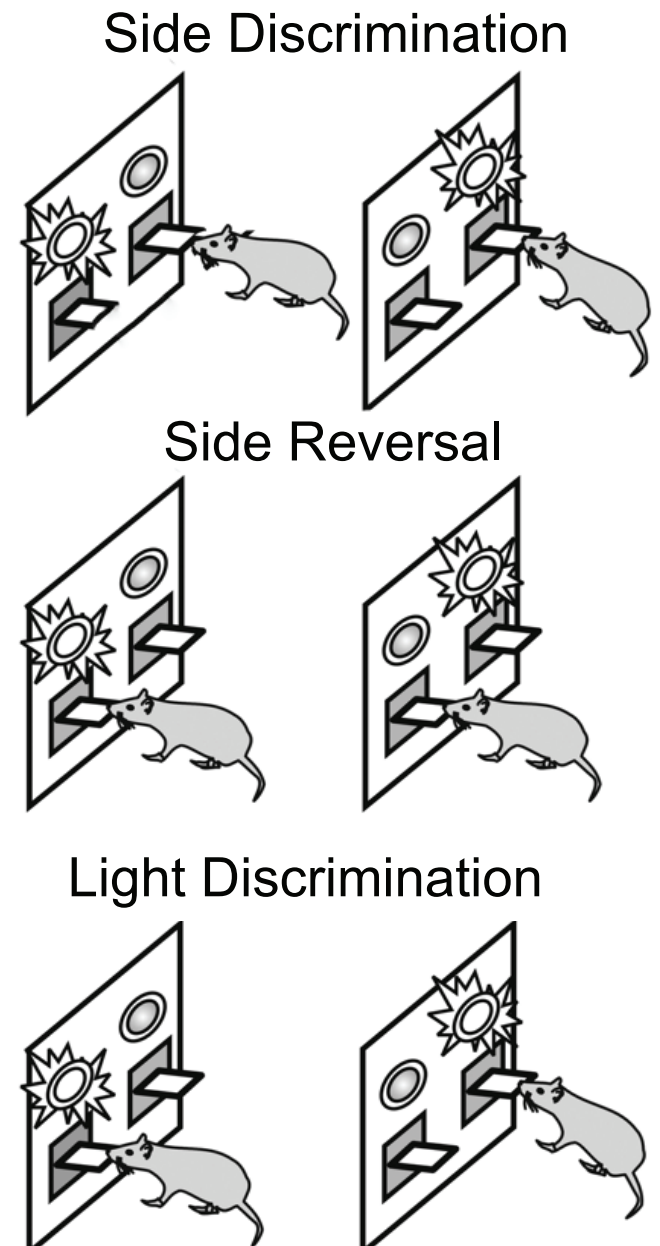


Figure 2

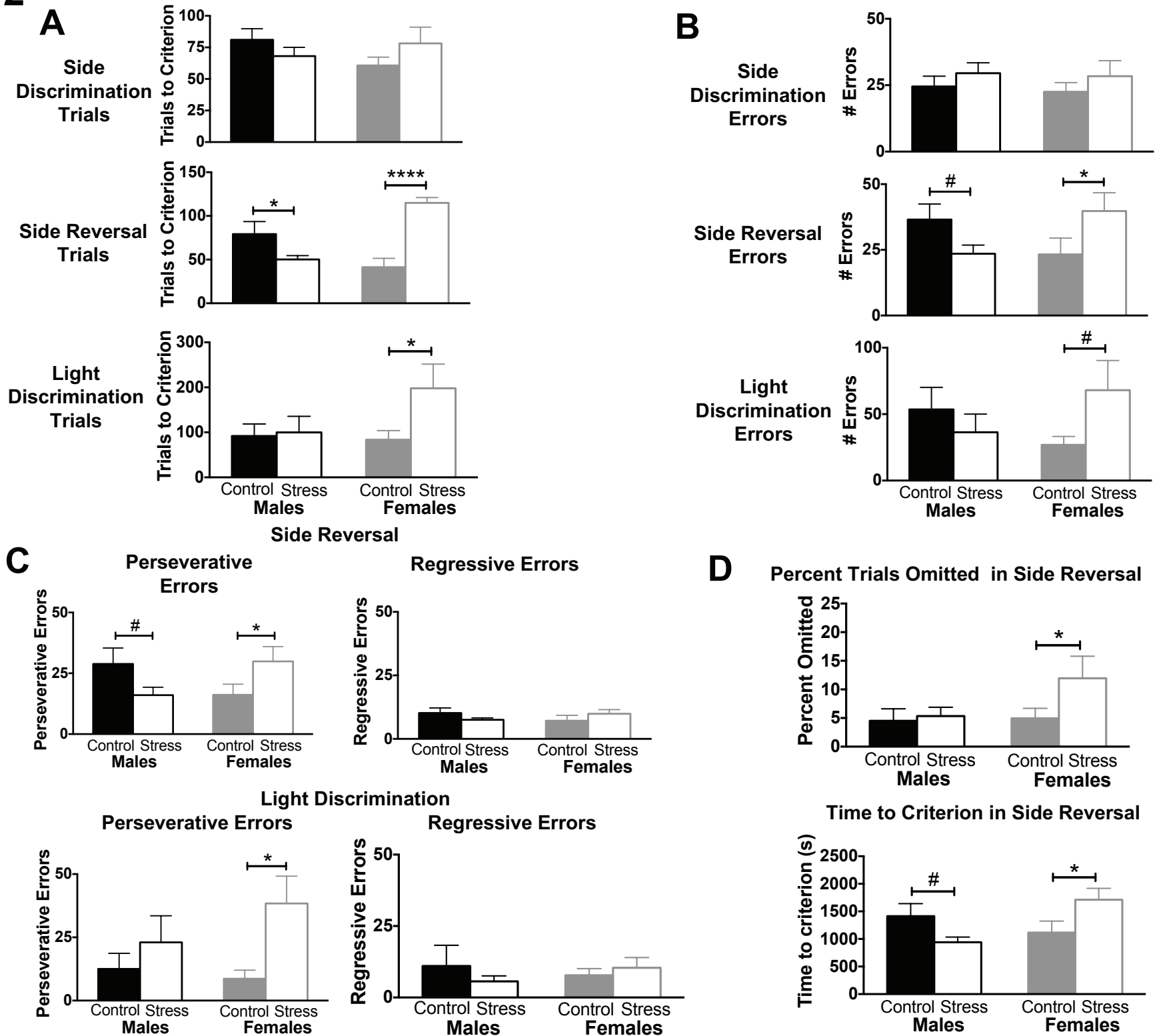
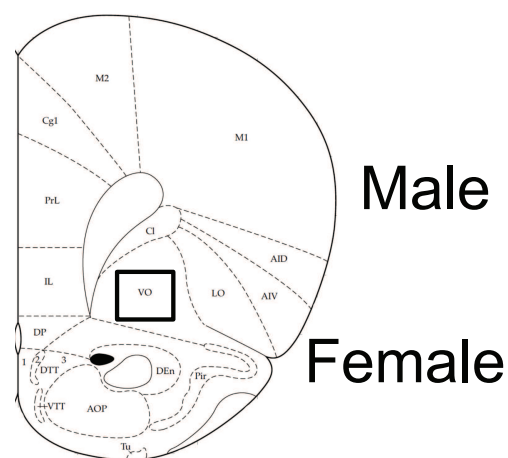
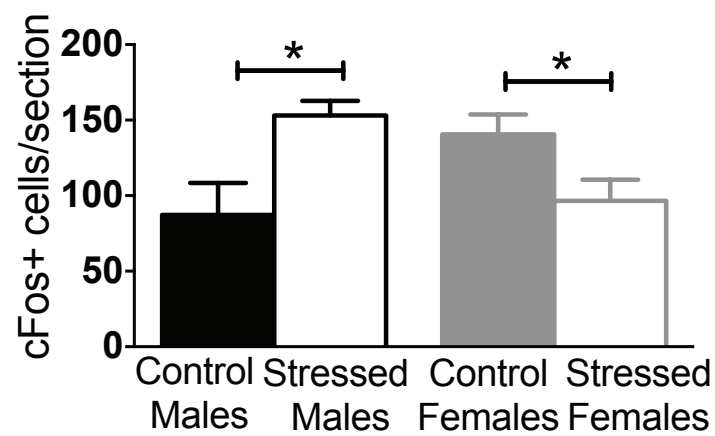
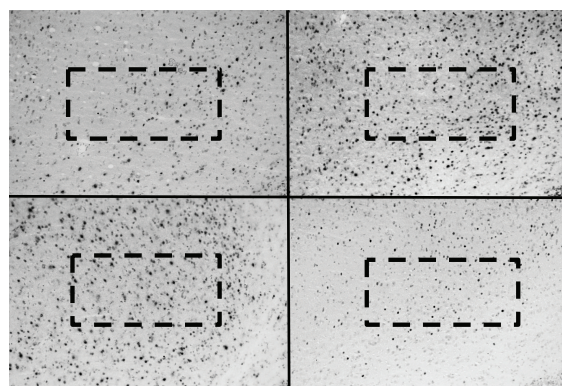
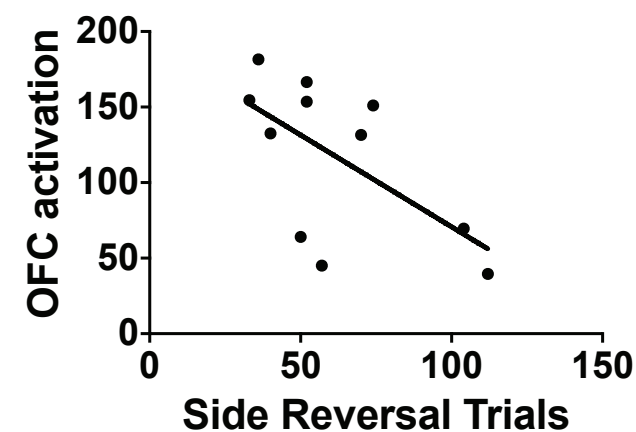
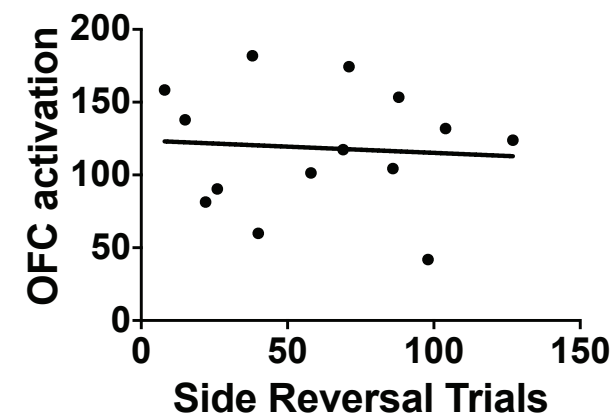


Figure 3

A**Control****Stress****B****Side Reversal Correlation with OFC Activation in Males****Side Reversal Correlation with OFC Activation in Females**

Name of Material/Equipment	Company	Catalog Number
3 inch glass pipette eye droppers	Amazon	4306-30-012LC
Alcohol Wipes	VWR	15648-990
Biotin-SP-conjugated AffiniPure Donkey Anti-Mouse	Jackson ImmunoResearch	715-065-150
C-fos mouse monoclonal primary antibody	AbCam	ab208942
Dustless Food Pellets	Bio Serv	F0021
GraphPad Prism		
Leica DM4 B Microscope and associated imaging	Leica	
MatLab		
Med-PC Software Suite	Med Associates	SOF-736
Operant Chambers	Med PC	MED-008-B2
Rat Bedding	Envigo	T.7097
Rat Chow	Envigo	T.2014.15
Restraint Devices	Bryn Mawr College	Made by our shop
Scribbles 3d fabric paint	Amazon	54139
Sprague Dawley Rats	Envigo	
VWR Superfrost Plus Micro Slide	VWR	48311-703

Comments/Description

For vaginal lavage

To clean trays in set shifting boxes between rats

All other DAB protocol staining materials are standard buffers/DAB and are not specified here, as this is not the main focus

To stain neural activation in brain areas after set shifting

For set shifting boxes (dispenser for reward)

Used for data analysis

Lots of different parts for the microscope and work station, for imaging lavage and/or c-fos

Software; code to help analyze set shifting data, available upon request.

Software; uses codes to operate operant chambers

Many different parts for the chamber set up and software to work with it; we also wrote a separate code for set shifting, avz

For stress exposure; specifications available upon request.

For vaginal lavage

At least D65 Males and Females

For vaginal lavage and/or brain slices/staining for c-fos

s of the methods paper

ailable upon request.

Laura Grafe, Ph.D.

Assistant Professor of Psychology
Bryn Mawr College
101 N. Merion Ave
Bryn Mawr, PA 19010-2899
lgrafe@brynmawr.edu

February 19, 2020

To Whom It May Concern,

Please find attached a revision of our manuscript, JoVE61228, for consideration in *The Journal of Visualized Experiments (JOVE)*:

“Assessing how stress affects cognitive flexibility using an operant strategy shifting paradigm”
authored by Andrew T. Gargiulo, Ariel Li, and Laura A. Grafe.

This manuscript describes an adaptation of an automated operant strategy shifting paradigm to assess how variations in stress affect cognitive flexibility in male and female Sprague-Dawley rats. Specifically, we use restraint stress before or after training in this operant-based task to examine how stress affects cognitive performance in both sexes. Particular brain areas associated with each task in this automated paradigm have been well established (namely, the medial prefrontal cortex and orbitofrontal cortex), allowing for targeted manipulations during the experiments, or for assessment of particular genes and proteins in these regions upon completion of the paradigm. This paradigm also allows for detection of different types of performance errors that occur after stress, each of which has defined neural substrates. We have identified distinct sex differences in perseverative errors after a repeated restraint stress paradigm. In a preclinical model, these techniques may shed light on how stress can affect the brain to impair cognition in psychiatric disorders such as Post-Traumatic Stress Disorder (PTSD) and Major Depressive Disorder (MDD), which display marked sex differences in prevalence.

We appreciate the constructive feedback from the editor and reviewers, and we have revised the manuscript in accordance with their suggestions. The revisions are detailed below and indicated **in blue** in the manuscript.

Thank you for considering this manuscript and we look forward to hearing from you.

Sincerely,

Dr. Laura Grafe
Assistant Professor of Psychology
Bryn Mawr College
101 N. Merion Ave
Bryn Mawr, PA 19010-2899

Editorial Comments

1. Please take this opportunity to thoroughly proofread the manuscript to ensure that there are no spelling or grammar issues. The JoVE editor will not copy-edit your manuscript and any errors in the submitted revision may be present in the published version.

Response: Spelling and grammar has been corrected within the manuscript.

2. Please format the manuscript as: paragraph Indentation: 0 for both left and right and special: none, Line spacings: single. Please include a single line space between each step, substep and note in the protocol section. Please use Calibri 12 points

Response: Formatting has been corrected to match these specifications.

3. Please revise the title to be more concise.

Response: We have now revised to a shorter title.

4. Please provide an email address for each author.

Email addresses for each author are as follows: Andrew Gargiulo (agargiulo1@brynmawr.edu), Ariel Li (xli5@brynmawr.edu), Laura Grafe (lgrafe@brynmawr.edu)

5. Please reword lines 82-86, 149-150, 163-165, 214-217, 267-269, 310-315, 318-321, 326-328 as it matches with previously published literature.

Response: These lines have been reworded.

6. Please revise the protocol text to avoid the use of any personal pronouns in the protocol (e.g., "we", "you", "our" etc.).

Response: These pronouns have been removed and reworded appropriately.

7. Please ensure that all text in the protocol section is written in the imperative tense as if telling someone how to do the technique (e.g., "Do this," "Ensure that," etc.). The actions should be described in the imperative tense in complete sentences wherever possible. Avoid usage of phrases such as "could be," "should be," and "would be" throughout the Protocol. Any text that cannot be written in the imperative tense may be added as a "Note."

Response: Text in the protocol section are now imperative, with actions and notes more properly organized.

8. The Protocol should contain only action items that direct the reader to do something.

Response: The Protocol now only contains actions directing the reader and notes clarifying those steps.

9. The Protocol should be made up almost entirely of discrete steps without large paragraphs of text between sections. Please simplify the Protocol so that individual steps contain only 2-3 actions per step.

Response: Steps have been simplified and elucidated.

10. Please ensure you answer the "how" question, i.e., how is the step performed? Please include all the button clicks, knob turns, etc.

Response: Steps are now more appropriately descriptive.

11. 1.5: Please move the hyperlink to the reference section and cite it as in text citation.

Response: We have now cited this as an in text citation and moved the hyperlink to the reference section.

12. 3.5: How is this done. Please include the scripts as supplemental files.

Response: The scripts for the strategy shifting paradigm will now be included as supplemental files.

13. 8.1: Please include how this is done.

Response: We have now added a previous citation that describes the immunohistochemistry protocol in detail. We have not included step by step instructions here, as this is not the main focus of this methods paper.

14. There is a 10-page limit for the Protocol, but there is a 2.75-page limit for filmable content. Please highlight 2.75 pages or less of the Protocol (including headings and spacing) that identifies the essential steps of the protocol for the video, i.e., the steps that should be visualized to tell the most cohesive story of the Protocol.

Response: We have already highlighted 2.5 pages of protocol for filmable content. If there is something else you would like us to do, please let us know.

15. Please obtain explicit copyright permission to reuse any figures from a previous publication. Explicit permission can be expressed in the form of a letter from the editor or a link to the editorial policy that allows re-prints. Please upload this information as a .doc or .docx file to your Editorial Manager account. The Figure must be cited appropriately in the Figure Legend, i.e. "This figure has been modified from [citation]."

Response: We have uploaded explicit copyright permission from Elsevier to Reuse figure 2 from a previous publication. This has been cited appropriately in the Figure Legend.

16. Please sort the Table of Materials in the alphabetical order. Please remove trademark (™) and registered (®) symbols from the Table of Equipment and Materials.

Response: The Table of Materials has now been reorganized, with the trademark and registered symbols removed.

Reviewer 1 Comments:

1. The authors should consider the effect that additional stressors may have on weight-based food restriction, making food access unequal between stressed and unstressed rats.

Response: We are grateful to reviewer 1 for bringing this to our attention. We have not observed significant decreases in body weight with our restraint procedures, and thus, it has not negatively impacted our weight-based food restriction protocol. However, we have now included the suggested procedure for food restriction in Section 1.4 of the protocol, so that experimenters may consider this as an alternative if they are experiencing significant decreases in body weight with their stress procedures (which would compound with weight-based food restriction).

2. The use of a minimum number of trials before successfully completing a task on test days may lead to inflated numbers for trials to criterion or dilute the importance of not making mistakes.

Response: We should note that the use of a minimum number of trials to criterion is based on previous literature and confirms that the animal has established the attentional set required during each task (Snyder et al., 2014). The count keeping track of consecutive trials does, in fact, restart upon any mistake prior to 8 consecutive correct lever presses. While it is possible that some rats may rapidly acquire and complete their task prior to the required 30 trial minimum, this minimum trial requirement leans in favor of caution to prevent subjects from pseudo-randomly pressing levers and finishing a task without successfully employing the required strategy.

3. The use of lever pressing vs. the digging task is an issue of ecological relevance. Consider the difference in these two behaviors.

Response: We have included in the discussion some attention as to the ecological relevance of the digging task, as both are important models for examining cognitive flexibility.

Reviewer 2 Comments:

1. Consider the limits of the use of lever pressing and a discriminative light task in terms of intra- vs extradimensional rule shifts, where this task lacks an intradimensional shift.

Response: Our understanding is that this lever pressing task does include both an intradimensional shift (side reversal) and an extradimensional shift (light discrimination). However, we do note that this paradigm is limited with regard to the kinds of stimuli available for shifts (side-based and visual-based) in the text.

2. Expand in the discussion as to the differences between this task and others, particularly in relation to various stress models and why varying results may be observed. Consider the use of the term strategy shifting, as this task might be more appropriately described in this way.

Response: We have added text to discuss varying results in strategy shifting paradigms after different stress procedures, incorporating suggested citations from this reviewer. We also have adjusted the manuscript so that we use the term strategy shifting throughout.

3. Be more specific when referring to tasks vs. paradigms.

Response: We now more consistently refer to various stress models, including the use of the restraint stress model, and the operant set shifting paradigm. This should make subsequent references clearer to keep track of.

4. Section 1.2, justify the use of single housing for food restriction, as it itself is a stressor.

Response: We thank both reviewer 2 and 3 for their input about pair-housed food restriction. We did not know that this was a possibility. We would love to incorporate this into our procedure, rather than single housing to food restrict. However, we could not find details in the literature on exactly how to do this. Any information that could be provided would be much appreciated.

5. Section 2.2, regarding vaginal lavage, express measurements using metrics.

Response: This measurement is now more clearly expressed in terms of volume.

6. Section 5.2.3, how does that animal respond correctly?

Response: Our understanding is that the reviewer is referring to training procedures here. Yes, within the training procedures, a rat must get 50 trials correct (not consecutively, but total) in

order to complete training. A correct response is defined specifically as a single press of a rewarded lever that results in the delivery of a food reward. That has now been clarified in the Protocol.

7. Section 5.3.1 and 6.1, be clearer as to how light discrimination is organized. Is the goal simply to ensure that rats will respond to levers when there are lights above them?

Response: Yes. This should now be more clearly explained in the Protocol section.

8. Section 7.1.3, further clarify what '8 consecutive trials' refers to.

Response: This should now be clearer both in Section 6 (Testing) and Section 7 (Behavioral Analysis).

9. Section 8.1, consider citing a paper that shows OFC involvement in spatial reversal learning to avoid the assumption that all forms of reversal-like behavioral are mediated by the same processes in the same brain area.

Response: We have now included citations within the manuscript for studies showing OFC involvement in both non spatial and spatial reversal learning; this should more clearly support the idea that OFC plays an important role in the various forms of reversal learning.

10. Please use consistency when referring to the strategy shifting aspects of this task.

Response: This should now be more clearly identified throughout the manuscript.

11. Please consider the role the OFC cortex might have in other aspects of the tasks on test day, particularly with regard to their involvement in c-fos expression.

Response: This is an important consideration and has now been included in the Representative Results section of the manuscript.

Reviewer 3 Comments:

1. Mention the work of Stan Floresco more prominently as the operant set-shifting task to ensure it is clear that the task was developed by a different lab. On that note, be clearer as to the modifications to the task from the original procedure.

Response: The reference to Stan Floresco's role in designing this task has been more explicitly stated in Protocol Section 5, and the modifications are more clearly explained.

2. Consider pair housing rats for feeding, as it does not disrupt food restriction even in males.

Response: We thank both reviewer 2 and 3 for their input about pair-housed food restriction. We did not know that this was a possibility. We would love to incorporate this into our procedure, rather than single housing to food restrict. However, we could not find details in the literature on exactly how to do this. Any information that could be provided would be much appreciated.

3. Feeding following testing should be delayed and a bit unpredictable so as to avoid rats learning that food will soon follow the completion of their task.

Response: A mention of the unpredictability of the timing of food delivery has now been included.

Jove Bios

Andrew Gargiulo (B.S. Millsaps College, 2014; Ph.D. Drexel University College of Medicine, 2019) is a postdoctoral fellow in the lab of Dr. Laura Grafe. His dissertation research examined neuropeptide systems in the brain and how they affect ingestive and affective behavior. Dr. Gargiulo's postdoctoral work focuses on how stress changes the brain to affect cognition, appetite, and sleep. In rats he uses surgical, behavioral, and molecular techniques to characterize how neuropeptides work endogenously to modulate behavior.

Ariel Li is an undergraduate Psychology Major and Neuroscience Minor in her senior year at Bryn Mawr College (Expected graduation May 2020). She has been working in Dr. Grafe's behavioral neuroscience lab since her junior year. Ariel is passionate in learning about how stress affects the brain and plans to apply to graduate school to continue her academic research studies.

Laura Grafe (B.S. University of Maryland, 2008; Ph.D. University of Pennsylvania, 2014; Postdoctoral Fellowship: Children's Hospital of Philadelphia, 2018) is an Assistant Professor at Bryn Mawr College and a behavioral neuroscientist. Her research program focuses on how stress affects the brain. Specifically, she uses a rodent model to study the neurobiological response to stress, and how this may lead to behavioral phenotypes relevant to mental health such as cognitive impairment, sleep deficits, and changes in appetite. Dr. Grafe is particularly interested in sex differences in the response to stress. She uses a range of techniques to uncover the behavioral, endocrine, and molecular mechanisms involved in stress vulnerability.

ELSEVIER LICENSE
TERMS AND CONDITIONS

Feb 18, 2020

This Agreement between Bryn Mawr College -- Laura Grafe ("You") and Elsevier ("Elsevier") consists of your license details and the terms and conditions provided by Elsevier and Copyright Clearance Center.

License Number	4772090357864
License date	Feb 18, 2020
Licensed Content Publisher	Elsevier
Licensed Content Publication	Biological Psychiatry
Licensed Content Title	Orexins Mediate Sex Differences in the Stress Response and in Cognitive Flexibility
Licensed Content Author	Laura A. Grafe, Amanda Cornfeld, Sandra Luz, Rita Valentino, Seema Bhatnagar
Licensed Content Date	Apr 15, 2017
Licensed Content Volume	81
Licensed Content Issue	8
Licensed Content Pages	10
Start Page	683
End Page	692
Type of Use	reuse in a journal/magazine
Requestor type	academic/educational institute

Portion	figures/tables/illustrations
Number of figures/tables/illustrations	1
Format	electronic
Are you the author of this Elsevier article?	Yes
Will you be translating?	No
Title of new article	Assessing how stress affects cognitive flexibility using an operant strategy shifting paradigm
Lead author	Laura Grafe
Title of targeted journal	JOVE
Publisher	MyJoveCorp
Expected publication date	Feb 2020
Portions	Figure 2
Requestor Location	Bryn Mawr College 151 North Merion Avenue BRYN MAWR, PA 19010 United States Attn: Bryn Mawr College
Publisher Tax ID	98-0397604
Total	0.00 USD
Terms and Conditions	

INTRODUCTION

1. The publisher for this copyrighted material is Elsevier. By clicking "accept" in connection with completing this licensing transaction, you agree that the following terms and conditions apply to this transaction (along with the Billing and Payment terms and conditions established by Copyright Clearance Center, Inc. ("CCC"), at the time that you opened your Rightslink account and that are available at any time at <http://myaccount.copyright.com>).

GENERAL TERMS

2. Elsevier hereby grants you permission to reproduce the aforementioned material subject to the terms and conditions indicated.

3. Acknowledgement: If any part of the material to be used (for example, figures) has appeared in our publication with credit or acknowledgement to another source, permission must also be sought from that source. If such permission is not obtained then that material may not be included in your publication/copies. Suitable acknowledgement to the source must be made, either as a footnote or in a reference list at the end of your publication, as follows:

"Reprinted from Publication title, Vol /edition number, Author(s), Title of article / title of chapter, Pages No., Copyright (Year), with permission from Elsevier [OR APPLICABLE SOCIETY COPYRIGHT OWNER]." Also Lancet special credit - "Reprinted from The Lancet, Vol. number, Author(s), Title of article, Pages No., Copyright (Year), with permission from Elsevier."

4. Reproduction of this material is confined to the purpose and/or media for which permission is hereby given.

5. Altering/Modifying Material: Not Permitted. However figures and illustrations may be altered/adapted minimally to serve your work. Any other abbreviations, additions, deletions and/or any other alterations shall be made only with prior written authorization of Elsevier Ltd. (Please contact Elsevier at permissions@elsevier.com). No modifications can be made to any Lancet figures/tables and they must be reproduced in full.

6. If the permission fee for the requested use of our material is waived in this instance, please be advised that your future requests for Elsevier materials may attract a fee.

7. Reservation of Rights: Publisher reserves all rights not specifically granted in the combination of (i) the license details provided by you and accepted in the course of this licensing transaction, (ii) these terms and conditions and (iii) CCC's Billing and Payment terms and conditions.

8. License Contingent Upon Payment: While you may exercise the rights licensed immediately upon issuance of the license at the end of the licensing process for the transaction, provided that you have disclosed complete and accurate details of your proposed use, no license is finally effective unless and until full payment is received from you (either by publisher or by CCC) as provided in CCC's Billing and Payment terms and conditions. If full payment is not received on a timely basis, then any license preliminarily granted shall be deemed automatically revoked and shall be void as if never granted. Further, in the event that you breach any of these terms and conditions or any of CCC's Billing and Payment terms and conditions, the license is automatically revoked and shall be void as if never granted. Use of materials as described in a revoked license, as well as any use of the materials beyond the scope of an unrevoked license, may constitute copyright infringement and publisher reserves the right to take any and all action to protect its copyright in the materials.

9. Warranties: Publisher makes no representations or warranties with respect to the licensed material.

10. Indemnity: You hereby indemnify and agree to hold harmless publisher and CCC, and their respective officers, directors, employees and agents, from and against any and all claims arising out of your use of the licensed material other than as specifically authorized pursuant to this license.

11. No Transfer of License: This license is personal to you and may not be sublicensed, assigned, or transferred by you to any other person without publisher's written permission.

12. No Amendment Except in Writing: This license may not be amended except in a writing signed by both parties (or, in the case of publisher, by CCC on publisher's behalf).

13. Objection to Contrary Terms: Publisher hereby objects to any terms contained in any purchase order, acknowledgment, check endorsement or other writing prepared by you, which terms are inconsistent with these terms and conditions or CCC's Billing and Payment terms and conditions. These terms and conditions, together with CCC's Billing and Payment terms and conditions (which are incorporated herein), comprise the entire agreement between you and publisher (and CCC) concerning this licensing transaction. In the event of any conflict between your obligations established by these terms and conditions and those established by CCC's Billing and Payment terms and conditions, these terms and conditions shall control.

14. Revocation: Elsevier or Copyright Clearance Center may deny the permissions described in this License at their sole discretion, for any reason or no reason, with a full refund payable to you. Notice of such denial will be made using the contact information provided by you. Failure to receive such notice will not alter or invalidate the denial. In no event will Elsevier or Copyright Clearance Center be responsible or liable for any costs, expenses or damage incurred by you as a result of a denial of your permission request, other than a refund of the amount(s) paid by you to Elsevier and/or Copyright Clearance Center for denied permissions.

LIMITED LICENSE

The following terms and conditions apply only to specific license types:

15. **Translation:** This permission is granted for non-exclusive world **English** rights only unless your license was granted for translation rights. If you licensed translation rights you may only translate this content into the languages you requested. A professional translator must perform all translations and reproduce the content word for word preserving the integrity of the article.

16. **Posting licensed content on any Website:** The following terms and conditions apply as follows: Licensing material from an Elsevier journal: All content posted to the web site must maintain the copyright information line on the bottom of each image; A hyper-text must be included to the Homepage of the journal from which you are licensing at <http://www.sciencedirect.com/science/journal/xxxxx> or the Elsevier homepage for books at <http://www.elsevier.com>; Central Storage: This license does not include permission for a scanned version of the material to be stored in a central repository such as that provided by Heron/XanEdu.

Licensing material from an Elsevier book: A hyper-text link must be included to the Elsevier homepage at <http://www.elsevier.com> . All content posted to the web site must maintain the copyright information line on the bottom of each image.

Posting licensed content on Electronic reserve: In addition to the above the following clauses are applicable: The web site must be password-protected and made available only to bona fide students registered on a relevant course. This permission is granted for 1 year only. You may obtain a new license for future website posting.

17. **For journal authors:** the following clauses are applicable in addition to the above:

Preprints:

A preprint is an author's own write-up of research results and analysis, it has not been peer-reviewed, nor has it had any other value added to it by a publisher (such as formatting, copyright, technical enhancement etc.).

Authors can share their preprints anywhere at any time. Preprints should not be added to or enhanced in any way in order to appear more like, or to substitute for, the final versions of articles however authors can update their preprints on arXiv or RePEc with their Accepted Author Manuscript (see below).

If accepted for publication, we encourage authors to link from the preprint to their formal publication via its DOI. Millions of researchers have access to the formal publications on ScienceDirect, and so links will help users to find, access, cite and use the best available version. Please note that Cell Press, The Lancet and some society-owned have different preprint policies. Information on these policies is available on the journal homepage.

Accepted Author Manuscripts: An accepted author manuscript is the manuscript of an article that has been accepted for publication and which typically includes author-incorporated changes suggested during submission, peer review and editor-author communications.

Authors can share their accepted author manuscript:

- immediately
 - via their non-commercial person homepage or blog
 - by updating a preprint in arXiv or RePEc with the accepted manuscript
 - via their research institute or institutional repository for internal institutional uses or as part of an invitation-only research collaboration work-group
 - directly by providing copies to their students or to research collaborators for their personal use
 - for private scholarly sharing as part of an invitation-only work group on commercial sites with which Elsevier has an agreement
- After the embargo period
 - via non-commercial hosting platforms such as their institutional repository
 - via commercial sites with which Elsevier has an agreement

In all cases accepted manuscripts should:

- link to the formal publication via its DOI
- bear a CC-BY-NC-ND license - this is easy to do
- if aggregated with other manuscripts, for example in a repository or other site, be shared in alignment with our hosting policy not be added to or enhanced in any way to appear more like, or to substitute for, the published journal article.

Published journal article (JPA): A published journal article (PJA) is the definitive final record of published research that appears or will appear in the journal and embodies all value-adding publishing activities including peer review co-ordination, copy-editing, formatting, (if relevant) pagination and online enrichment.

Policies for sharing publishing journal articles differ for subscription and gold open access articles:

Subscription Articles: If you are an author, please share a link to your article rather than the full-text. Millions of researchers have access to the formal publications on ScienceDirect, and so links will help your users to find, access, cite, and use the best available version.

Theses and dissertations which contain embedded PJAs as part of the formal submission can be posted publicly by the awarding institution with DOI links back to the formal publications on ScienceDirect.

If you are affiliated with a library that subscribes to ScienceDirect you have additional private sharing rights for others' research accessed under that agreement. This includes use for classroom teaching and internal training at the institution (including use in course packs and courseware programs), and inclusion of the article for grant funding purposes.

Gold Open Access Articles: May be shared according to the author-selected end-user license and should contain a [CrossMark logo](#), the end user license, and a DOI link to the formal publication on ScienceDirect.

Please refer to Elsevier's [posting policy](#) for further information.

18. For book authors the following clauses are applicable in addition to the above: Authors are permitted to place a brief summary of their work online only. You are not allowed to download and post the published electronic version of your chapter, nor may you scan the printed edition to create an electronic version. **Posting to a repository:** Authors are permitted to post a summary of their chapter only in their institution's repository.

19. Thesis/Dissertation: If your license is for use in a thesis/dissertation your thesis may be submitted to your institution in either print or electronic form. Should your thesis be published commercially, please reapply for permission. These requirements include permission for the Library and Archives of Canada to supply single copies, on demand, of the complete thesis and include permission for Proquest/UMI to supply single copies, on demand, of the complete thesis. Should your thesis be published commercially, please reapply for permission. Theses and dissertations which contain embedded PJAs as part of the formal submission can be posted publicly by the awarding institution with DOI links back to the formal publications on ScienceDirect.

Elsevier Open Access Terms and Conditions

You can publish open access with Elsevier in hundreds of open access journals or in nearly 2000 established subscription journals that support open access publishing. Permitted third party re-use of these open access articles is defined by the author's choice of Creative Commons user license. See our [open access license policy](#) for more information.

Terms & Conditions applicable to all Open Access articles published with Elsevier:

Any reuse of the article must not represent the author as endorsing the adaptation of the article nor should the article be modified in such a way as to damage the author's honour or reputation. If any changes have been made, such changes must be clearly indicated.

The author(s) must be appropriately credited and we ask that you include the end user license and a DOI link to the formal publication on ScienceDirect.

If any part of the material to be used (for example, figures) has appeared in our publication with credit or acknowledgement to another source it is the responsibility of the user to ensure their reuse complies with the terms and conditions determined by the rights holder.

Additional Terms & Conditions applicable to each Creative Commons user license:

CC BY: The CC-BY license allows users to copy, to create extracts, abstracts and new works from the Article, to alter and revise the Article and to make commercial use of the Article (including reuse and/or resale of the Article by commercial entities), provided the user gives appropriate credit (with a link to the formal publication through the relevant DOI), provides a link to the license, indicates if changes were made and the licensor is not

represented as endorsing the use made of the work. The full details of the license are available at <http://creativecommons.org/licenses/by/4.0>.

CC BY NC SA: The CC BY-NC-SA license allows users to copy, to create extracts, abstracts and new works from the Article, to alter and revise the Article, provided this is not done for commercial purposes, and that the user gives appropriate credit (with a link to the formal publication through the relevant DOI), provides a link to the license, indicates if changes were made and the licensor is not represented as endorsing the use made of the work. Further, any new works must be made available on the same conditions. The full details of the license are available at <http://creativecommons.org/licenses/by-nc-sa/4.0>.

CC BY NC ND: The CC BY-NC-ND license allows users to copy and distribute the Article, provided this is not done for commercial purposes and further does not permit distribution of the Article if it is changed or edited in any way, and provided the user gives appropriate credit (with a link to the formal publication through the relevant DOI), provides a link to the license, and that the licensor is not represented as endorsing the use made of the work. The full details of the license are available at <http://creativecommons.org/licenses/by-nc-nd/4.0>. Any commercial reuse of Open Access articles published with a CC BY NC SA or CC BY NC ND license requires permission from Elsevier and will be subject to a fee.

Commercial reuse includes:


- Associating advertising with the full text of the Article
- Charging fees for document delivery or access
- Article aggregation
- Systematic distribution via e-mail lists or share buttons

Posting or linking by commercial companies for use by customers of those companies.

20. Other Conditions:

v1.9

Questions? customercare@copyright.com or +1-855-239-3415 (toll free in the US) or +1-978-646-2777.



Click here to access/download
Supplemental Coding Files
Habituation.MPC



Click here to access/download
Supplemental Coding Files
Old Light Discrimination.MPC





Click here to access/download
Supplemental Coding Files
Old Side Discrimination.MPC





Click here to access/download
Supplemental Coding Files
Training - Streak 1,3,5 (lights).MPC

