

# Journal of Visualized Experiments

## Assessment of global ocular structure following spaceflight using micro-computed tomography (micro-CT) imaging method --Manuscript Draft--

Article Type:	Methods Article - Author Produced Video
Manuscript Number:	JoVE61227R4
Full Title:	Assessment of global ocular structure following spaceflight using micro-computed tomography (micro-CT) imaging method
Corresponding Author:	Gina Delia Roque-Torres, Ph.D Loma Linda University Loma Linda, CA UNITED STATES
Corresponding Author's Institution:	Loma Linda University
Corresponding Author E-Mail:	gdrtorres@llu.edu
Order of Authors:	Gina Delia Roque-Torres, Ph.D Nina C. Nishiyama Seta Stanbouly Xiao Wen Mao
Additional Information:	
Question	Response
Please indicate whether this article will be Standard Access or Open Access.	Open Access (US\$3000)
Please confirm that you have read and agree to the terms and conditions of the author license agreement that applies below:	I agree to the <a href="#">Author License Agreement</a>
Please specify the section of the submitted manuscript.	Biology
Please provide any comments to the journal here.	

**TITLE:**

Assessment of Global Ocular Structure Following Spaceflight Using a Micro-Computed Tomography (Micro-CT) Imaging Method

**AUTHORS AND AFFILIATIONS:**

Gina D. Roque-Torres<sup>1</sup>, Nina C. Nishiyama<sup>2</sup>, Seta Stanbouly<sup>2</sup>, Xiao Wen Mao<sup>2</sup>

<sup>1</sup> Center for Dental Research, Loma Linda University, CA, USA

<sup>2</sup> Department of Basic Sciences, Division of Biomedical Engineering Sciences (BMES), Loma Linda University, Loma Linda, CA, USA

**Email addresses of co-authors:**

Nina C. Nishiyama (nnishiyama@llu.edu)

Seta Stanbouly (sstanbouly@llu.edu)

Xiao Wen Mao (xmao@llu.edu)

**Corresponding author:**

Gina D. Roque-Torres (gdrtorres@llu.edu)

**KEYWORDS:**

X-Ray Microtomography; Imaging, Three-dimensional; Image processing, Computer-assisted; Radiology; Microgravity; Fixation, Ocular; Spaceflight.

**SUMMARY:**

We present a protocol using high-resolution micro-computed tomography imaging to determine whether spaceflight induced damage on ocular structures. The protocol shows the micro-CT-derived measurement of ex vivo rodent ocular structures. We demonstrate the ability to assess ocular morphological changes following spaceflight using a non-destructive tridimensional technique to evaluate ocular damage.

**ABSTRACT:**

Reports show that prolonged exposure to a spaceflight environment produces morphologic and functional ophthalmic changes in astronauts during and after an International Space Station (ISS) mission. However, the underlying mechanisms of these spaceflight-induced changes are currently unknown. The purpose of the present study was to determine the impact of the spaceflight environment on ocular structures by evaluating the thickness of the mouse retina, the retinal pigment epithelium (RPE), the choroid and the sclera layer using micro-CT imaging. Ten-week-old C57BL/6 male mice were housed aboard the ISS for a 35-day mission and then returned to Earth alive for tissue analysis. For comparison, ground control (GC) mice on Earth were maintained in identical environmental conditions and hardware. Ocular tissue samples were collected for micro-CT analysis within 38(±4) hours after splashdown. The images of the cross-section of the retina, the RPE, the choroid, and the sclera layer of the fixed eye was recorded in an axial and sagittal view using a micro-CT imaging acquisition method. The micro-CT analysis showed that the cross-section areas of the retina, RPE, and choroid layer thickness

were changed in spaceflight samples compared to GC, with spaceflight samples showing significantly thinner cross-sections and layers compared to controls. The findings from this study indicate that micro-CT evaluation is a sensitive and reliable method to characterize ocular structure changes. These results are expected to improve the understanding of the impact of environmental stress on global ocular structures.

## **INTRODUCTION:**

In the microgravity environment of spaceflight, increased intracranial pressure (ICP) caused by fluid shift may have contributed to spaceflight-associated neuro-ocular syndrome (SANS)<sup>1-5</sup>. Indeed, over 40% of astronauts have experienced SANS during and after an International Space Station (ISS) mission<sup>6</sup>, including the spaceflight subject of the NASA Twins Study<sup>7</sup>. The current pathophysiology of SANS includes physiological changes such as optic disc edema, globe flattening, choroidal and retinal folds, hyperopic refractive error shifts, and nerve fiber layer infarcts (i.e., cotton wool spots) and are well documented<sup>5,8</sup>. However, the underlying mechanisms of the changes and factors contributing to the development of damage are unclear. In order to have a better understanding of SANS, animal models are available for characterizing the spaceflight-associated changes in retinal structure and function.

In a previous investigation on the same animals, we reported the impact of 35 days of spaceflight on the mouse retina. The results elucidate that spaceflight induces significant damage in the retina and retinal vasculature, and some proteins/pathways associated with cell death, inflammation and metabolic stress were significantly altered following spaceflight<sup>9</sup>.

Currently, there are a variety of noninvasive imaging techniques established to monitor disease development and progression, as well as physiological responses to various environmental stressors, which are also widely used in small rodent models. One of these techniques is micro-CT, which evaluates anatomical structures and pathological processes, and has successfully been used on organisms as small as mice<sup>10</sup>.

Micro-CT can achieve a micro-sized resolution, and it can provide high contrast for volumetric analysis of soft tissues with the addition of the appropriate contrast agent<sup>10-14</sup>. Micro-CT technology is advantageous compared to traditional methods such as gross anatomy, light microscopy, and histology examination, as it minimizes physical damage to the geometric profile of the specimens and does not alter the spatial relationship among structures. In addition, three-dimensional (3D) models of structures can be reconstructed from micro-CT images<sup>12,14</sup>. To date, despite evidence showing vision impairment following exposure to the space environment, few data in animal models are available for a better understanding of the spaceflight-associated changes in retinal structure and function. In the current study, mice were flown on a 35-day mission aboard the ISS to determine the impact of the spaceflight environment on ocular tissue structures by quantifying the microstructure of the retina, the RPE, and the choroid layers using micro-CT.

## **PROTOCOL:**

The study followed the recommendations outlined in the Guide for the Care and Use of Laboratory Animals of the National Institutes of Health (NIH) and was approved by both the Institutional Animal Care and Use Committee (IACUC) of Loma Linda University (LLU) and The National Aeronautics and Space Administration (NASA). More detailed information regarding this flight experiment can be found elsewhere<sup>9,15</sup>.

## **1. Flight and control conditions**

NOTE: A 12th Commercial Resupply Service (CRS-12) payload was launched By SpaceX at the Kennedy Space Center (KSC) on a 35-day mission in August 2017 which included onboard 10-week-old male C57BL/6 mice (n = 20) for NASA's ninth Rodent Research experiment (RR-9).

1.1. Prior to returning to Earth via SpaceX's Dragon capsule, have the mice live in NASA's Rodent Habitats (RH) aboard ISS for 35 days at an ambient temperature of 26–28 °C with a 12-hour light/dark cycle throughout the flight.

1.2. Place Ground Control (GC) mice into the same housing hardware used in flight and match environmental parameters such as temperature and carbon dioxide (CO<sub>2</sub>) levels as closely as possible based on telemetry data.

1.3. Feed GC mice the same NASA food bar diet as their space-based counterparts. Provide both the spaceflight and GC mice with same ad libitum access to water and food.

## **2. Post-flight evaluation of the mice**

2.1. Within 28 hours of splashdown on Earth, transport the mice to Loma Linda University (LLU). Once there, remove the mice from the animal enclosure hardware and assess for survival and health.

NOTE: Upon observation, inspecting personnel reported that all the mice had survived the 35-day space mission and were in good condition, i.e. no noticeable deficiencies/abnormalities.

## **3. Dissecting and preservation of mouse eyes after spaceflight**

3.1. Within 38(±4) hours of splashdown (n=20/group), euthanize the mice in 100% CO<sub>2</sub> and collect their eyes.

3.2. Dissect the right eye retinas and place individually in sterile cryovials, snap-freeze in liquid nitrogen, and keep at –80 °C prior to use.

3.3. Fix the whole left eyes in 4% paraformaldehyde in phosphate-buffered saline (PBS) for 24 h and then rinse with phosphate-buffered saline (PBS) for micro-CT assays.

## **4. Sample preparation for micro-CT scanning**

4.1. After fixation, dehydrate the mice's eyes in ethanol. To forestall any further or abrupt shrinkage of the fixed sample, use a graded series of ethanol solutions: beginning with 50% ethanol for 1 hour and then increasing the concentrations of the ethanol solutions as follows for 1 hour each: 70, 80, 90, 96 and 100%.

NOTE: The mice's eyes must be handled in a hood chamber.

#### 4.2. Phosphomolybdic acid (PMA) staining

CAUTION: On account of PMA being corrosive, a carcinogenic, and toxic to organs, appropriate protective personal equipment is necessary, including the use of a fume hood.

4.2.1. Prepare the staining solution: 10 mg of PMA in 100 mL of absolute ethanol.

4.2.2. Stain the mice's eyes (10 wt. % phosphomolybdic acid - PMA dissolved in absolute ethanol) for 6 days.

4.2.3. Prior to scanning, first wash the eye samples in absolute ethanol and then place each eye in individual 2 mL plastic containers that are filled with 100% absolute ethanol. Add a cotton pad to stabilized samples during scan.

### 5. Micro-CT scanning and analysis

NOTE: The SkyScan 1272 scanner, a desktop X-ray Micro-CT system, was used for evaluation of retinal damage in the mice's eyes

5.1. Mount the soft-tissue sample to an appropriate sample holder. To prevent any movement during the X-ray CT measurements, ensure a tight fit of the sample on its holder (**Figure 1**).

5.2. Upon meticulous alignment of each sample, individually scan the sample via X-rays.

5.2.1. After opening the software, center the sample in the frame. In the protocol, use no filter and set the matrix to increase the pixel at 4  $\mu\text{m}$ . Use micro-positioning to keep the sample center on the frame.

5.2.2. After that, check the parameter to maximize the contrast agent. To perform the calibration, remove the sample and check that the flat-field correction is greater than 80%.

5.2.3. After calibration, reinsert the sample into the scanning chamber. For scanning, use a rotation step of 0.400, a frame averaging of 4, a random movement of 30, and rotate the samples 180°.

5.3. Use a positioning jig for repeated measurements. Due to phase-contrast enhancement

performed as described, object details as small as 4  $\mu\text{m}$  can be detected from x-rays generated by a sealed micro-focus X-ray tube (tungsten anode) at 50 keV and 80 mA with an integration time of 90 minutes.

NOTE: The acquisition parameters laid out in this section for selection to produce overview CT scans with the highest image quality.

5.4. After scanning, use software (e.g., NRecon) to reconstruct the data.

5.4.1. Adjust the histogram and use the same range (0 – 0.24) for all the samples. Reconstruct region of interest was a circle, and no scales or labels were used.

5.4.2. To reduce artifacts during the scanning, use a beam-hardening correction of 20, a smoothing correction of 1, a ring artifact reduction of 6, and perform no alteration in the misalignment compensation. After reconstruction, it was confirmed that the sample was within the region of interest.

5.4.3. Reposition images using a plane parallel to the optic nerve and lens of the eyes.

5.5. After scanning, use software (e.g., DataViewer) to visualize the reconstructed images in all three views.

NOTE: If necessary, with this software, the images can be re-positioned using a plane parallel to the optic nerve and lens of the eyes to perform a standardized analysis.

5.6. Descriptive analysis

5.6.1. Measure the structures using a measuring tool in the software (e.g., CTAn). Use the optical nerve to delimit the region of interest for analysis. By calculation, the protocol used the middle slice to perform the measurements. This evaluation was performed by descriptive analysis (**Figure 2** and **Figure 3**).

5.6.2. Perform measurements of the retina, retinal pigment epithelium (RPE), choroid, and sclera layer in the sagittal (**Figure 2**) and axial view (**Figure 3**). Take three measurements of each structure in order to calculate an average.

## REPRESENTATIVE RESULTS:

The mean thickness of the retina, RPE, choroid, and sclera layer was recorded using the micro-CT scans after following the protocol above (**Figure 1**). The technique showed a multiplanar reconstruction of the eyes in three different views. During the analysis, the observer was able to scroll through the whole sample to standardize the analysis right in the middle of the sample.

The micro-CT analysis showed the cross-section areas of the eyes in the sagittal and axial view (**Figure 2** and **Figure 3**) in which were performed the linear measurements. RPE and choroid layer

were significantly or trend lower in the spaceflight group when compared to the GC group (Figure 3).

**Figure 1. Micro-CT procedure of soft tissue.** (A) Soft tissue sample (mouse eye). (B) Samples were fixed in 4% formaldehyde in phosphate buffer solution (PBS). After fixation, the mice's eyes were dehydrated in ethanol. To prevent a further and abrupt shrinkage of the fixed sample, a graded series of ethanolic solutions were used, beginning with 50% ethanol for 1 h and the following ethanol solutions in the concentrations listed, for 1 hour each: 70, 80, 90, 96 and 100%. (C) The mice's eyes were stained in phosphomolybdic acid (PMA) for 6 days, washed in absolute ethanol and then placed in individual 2 mL plastic containers filled with absolute ethanol. (D) A desktop X-ray micro-CT system scanner was used to evaluate the retinal injury in mice eyes.

**Figure 2. Sagittal view of a ground control mouse.** Layers of the eye on the right side of the image are annotated, from top-to-bottom, retina (0.077 mm), retina pigment layer (RPE, 0.038 mm), choroid (0.041 mm), sclera (0.059 mm). This figure has been taken from Overbey et al.<sup>15</sup>.

**Figure 3. Axial view of a ground control mouse.** Layers of the eye on the right side of the image are annotated, from top-to-bottom, retina (0.144 mm), retina pigment layer (RPE, 0.051 mm), choroid (0.041 mm), sclera (0.073 mm). This figure has been taken from Overbey et al.<sup>15</sup>.

**Figure 4: Average thickness of the retinal layer, RPE layer, and the choroid layer measured by micro-CT in the spaceflight and control groups.** Counts were averaged across five retinas per group. Values were represented as mean thickness  $\pm$  standard error (SEM). SEM of the mean is marked with error bars. Significantly lower in cross-section thickness in the spaceflight (FLT) group compared to the ground control (GC) group is denoted “\*” ( $p < 0.05$ ). This figure has been taken from Overbey et al.<sup>15</sup>.

## DISCUSSION:

The results of this study showed that there were structural changes in the spaceflight mouse eye using the micro-CT technique when compared to GC groups, particularly of the retina, the RPE, and the choroid layers of the eye, as evidenced by their decreased thickness. Micro-CT provides an efficient and non-destructive technique to characterize the changes with no need for manipulation. The use of PMA staining enhanced the quality of the micro-CT images to successfully obtain clear 3D tomographic images after reconstruction, foregoing any need to physically alter the structure of the specimen. An added benefit of these images is that they display the entire region of interest digitally, thereby increasing accessibility as well as reproducibility of the findings. Through the micro-CT images produced during this study, the targeted specimen showed differentiation of the multiple structures like the retina, RPE, choroid, and sclera layer for determination of the thickness of each layer.

A critical step within the protocol is the manipulation of the samples due to their size and texture. The handling of the specimen must be carefully done without putting pressure on the specimen during the preparation. The micro-CT has some limitations: resolution and the lack of standardized values for the parameters. During the scanning, the different micro-CT scanners

may have diverse image processing algorithms; yet calibration for a grayscale might be pursued to overcome any problem. After scanning, reconstruction of the images should be based on the tissue and the analysis that will be performed. It can be critical since image quality depends on the tomographic system, the settings, the specimen size as well as the preparation methods<sup>16,17</sup>.

Due to its successful application in studying several types of normal and pathologic tissues, micro-CT imaging capabilities should be used in future research to compile volumetric data for other analyses. Thus, based on the present study's purpose, it was acceptable to use bi-dimensional measurements, but segmentation of the gross 3D structure can also be beneficial to provide a precise outline of the entire specimen. Even with all the advantages of a non-destructive technique, micro-CT will not replace other methods such as immunohistochemistry, but will supplement and allow subsequent histology analyses if desired.

A prolonged spaceflight condition produces a series of structural and functional ocular changes in the astronauts during and after the space mission defined as SANS. The findings include hyperopic shifts, globe flattening, choroidal/retinal folds, and cotton wool spots<sup>19</sup>. In contrast to astronauts' optical coherence tomography (OCT) finding of retinal nerve fiber layer thickening, thinning of retina and choroidal layer was documented in this animal micro-CT study. These results were unexpected. This discrepancy may be due to confounding factors. Mice have limited cephalad fluid shift compared to human. This lack of fluid shift may have evoked different responses to gravitational changes. Secondly, mice were dissected within 38 hours after splashdown, and an acute response for re-adaptation may also contribute to morphological changes in the retina and choroid. Confirmation of this possibility requires further measurements during spaceflight and long term after the mission.

The results of this study indicate that space flight conditions, especially gravitational changes, may induce an acute and short-term response in the eye. Further investigation is needed to determine the consequences of the acute changes on ocular on retinal function and mechanism of spaceflight-induced structure changes.

#### **ACKNOWLEDGMENTS:**

This study was supported by NASA Space Biology grant # NNX15AB41G and LLU Department of Basic Sciences. Sungshin Choi, Dennis Leveson and Rebecca Klotz contributed significantly to the success of our spaceflight study and we greatly appreciate their support. The authors would also like to thank the entire NASA Biospecimen Sharing Program group for their great assistance. The authors would also like to thank the Center for Dental Research for Micro-CT service.

#### **DISCLOSURES:**

All authors have nothing to disclose.

#### **REFERENCES:**

1. Dawson, L. The New Space Race. In: The Politics and Perils of Space Exploration. Springer Praxis Books, 1-24. Springer, Cham (2017).
2. Mao, X. W. et al. Spaceflight environment induces mitochondrial oxidative damage in ocular



tissue. *Radiation Research*. **180**, 340–350 (2013).

3. Overbey, E. G. et al. Mice Exposed to Combined Chronic Low-Dose Irradiation and Modeled Microgravity Develop Long-Term Neurological Sequelae. *International Journal of Molecular Sciences*. **20** (17), 4094 (2019).

4. Nelson, E. S., Mulugeta, L., Myers, J. G. Microgravity-induced fluid shift and ophthalmic changes. *Life*. **4**, 621–665 (2014).

5. Lee, A. G., Mader, T. H., Robert Gibson, C., Brunstetter, T. J., Tarver, W. J. Space flight-associated neuro-ocular syndrome (SANS). *Eye*. **32**, 1164–1167 (2018).

6. Stenger, M. B. et al. Evidence Report: Risk of Spaceflight Associated Neuro-ocular Syndrome (SANS) (2017).

7. Garrett-Bakelman, F. E. et al. The NASA Twins Study: A multidimensional analysis of a year-long human spaceflight. *Science*. **364** (2019).

8. Mader, T. H. et al. Optic disc edema, globe flattening, choroidal folds, and hyperopic shifts observed in astronauts after long duration space flight. *Ophthalmology*. **118**, 2058–2069 (2011).

9. Mao, X.W. et al. Characterization of mouse ocular response to a 35-day spaceflight mission: Evidence of blood-retinal barrier disruption and ocular adaptations. *Science Reports*. **9** (1), 8215, 2019.

10. Metscher, B.D. MicroCT for developmental biology: a versatile tool for high-contrast 3D imaging at histological resolutions, *Developmental Dynamics*. 632-40 (2009).

11. Silva, J.M.S. et al. Three-dimensional non-destructive soft-tissue visualization with X-ray staining micro-tomography. *Science Reports*. **5**, 14088 (2015).

12. Descamps, E. et al. Soft tissue discrimination with contrast agents using micro-CT scanning. *Belgian Journal of Zoology*. 20-40 (2014).

13. Wu, J, Yin, N. Anatomy research of nasolabial muscle structure in fetus with cleft lip: an iodine staining technique based on microcomputed tomography. *Journal of Craniofacial Surgery*. **25** (3), 1056-61 (2014).

14. Roque-Torres, G.D. Application of Micro-CT in Soft Tissue Specimen Imaging. In: Orhan K. (eds) Micro-computed Tomography (micro-CT) in Medicine and Engineering, 139-170, Springer, Cham (2020).

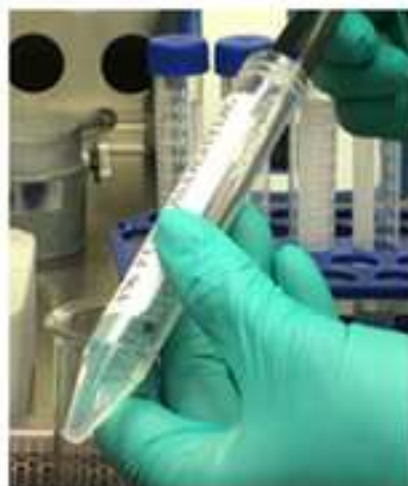
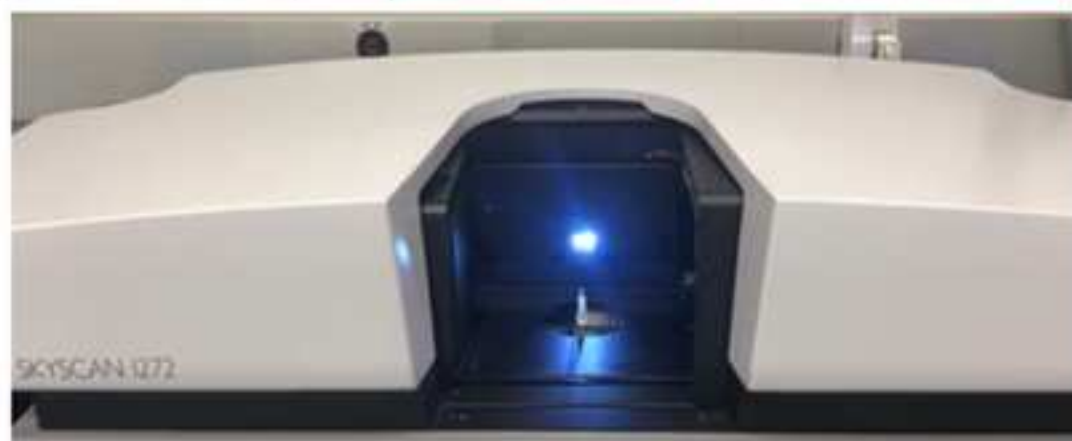
15. Overbey, E.G. et al. Spaceflight influences gene expression, photoreceptor integrity, and oxidative stress-related damage in the murine retina. *Science Reports*. **9** (1), 13304 (2019).

16. Elkhoury, J.E., Shankar, R., Ramakrishnan, T.S. Resolution and Limitations of X-Ray Micro-CT with Applications to Sandstones and Limestones. *Transport in Porous Media*. **129**, 413–425 (2019).

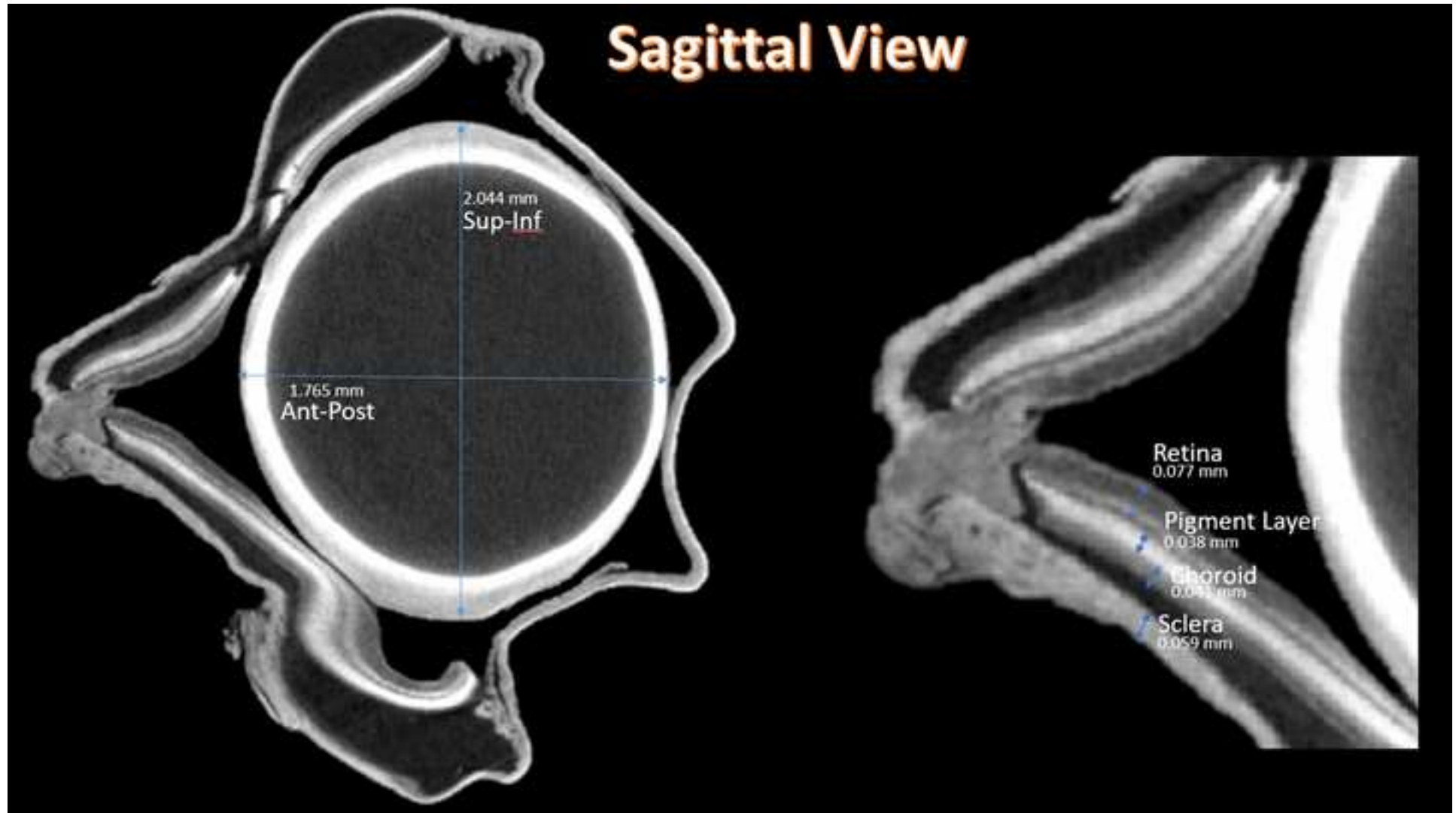
17. Sombke, A., Lipke, E., Michalik, P., Uhl, G., Harzsch, S. Potential and limitations of X-Ray micro-computed tomography in arthropod neuroanatomy: A methodological and comparative survey. *Journal of Comparative Neurology*. **523** (8), 1281–1295 (2015).

18. Huang, A.S., Stenger, M.B., Macias, B.R. Gravitational Influence on Intraocular Pressure: Implications for Spaceflight and Disease. *Journal of Glaucoma*. **28** (8), 756-764 (2019).

19. Lee, A.G. et al. Spaceflight associated neuro-ocular syndrome (SANS) and the neuro-ophthalmologic effects of microgravity: a review and an update. *NPJ Microgravity*. **6**, 7 (2020).

**A****B****C****D**

## Sagittal View



## Axial View

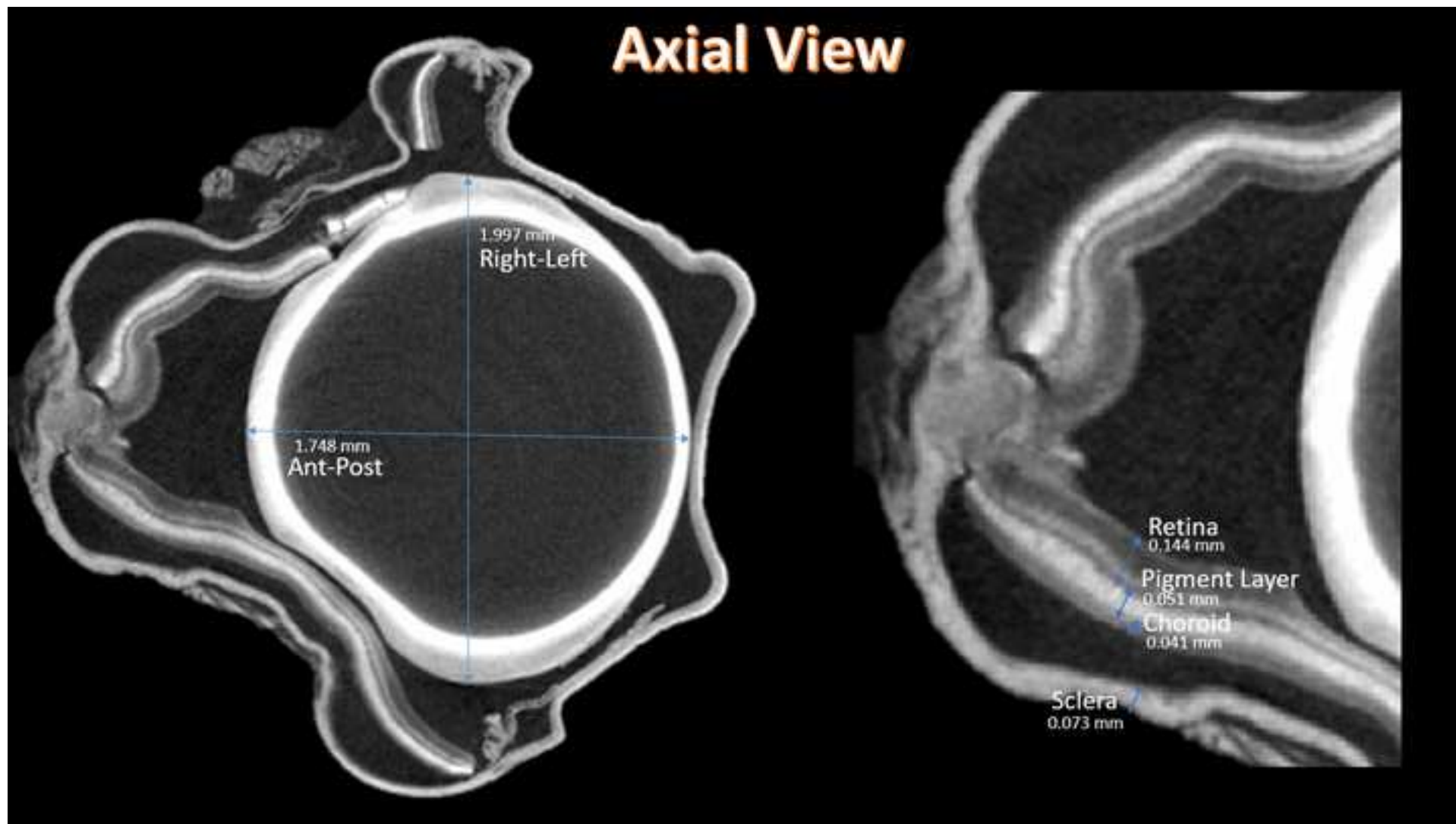
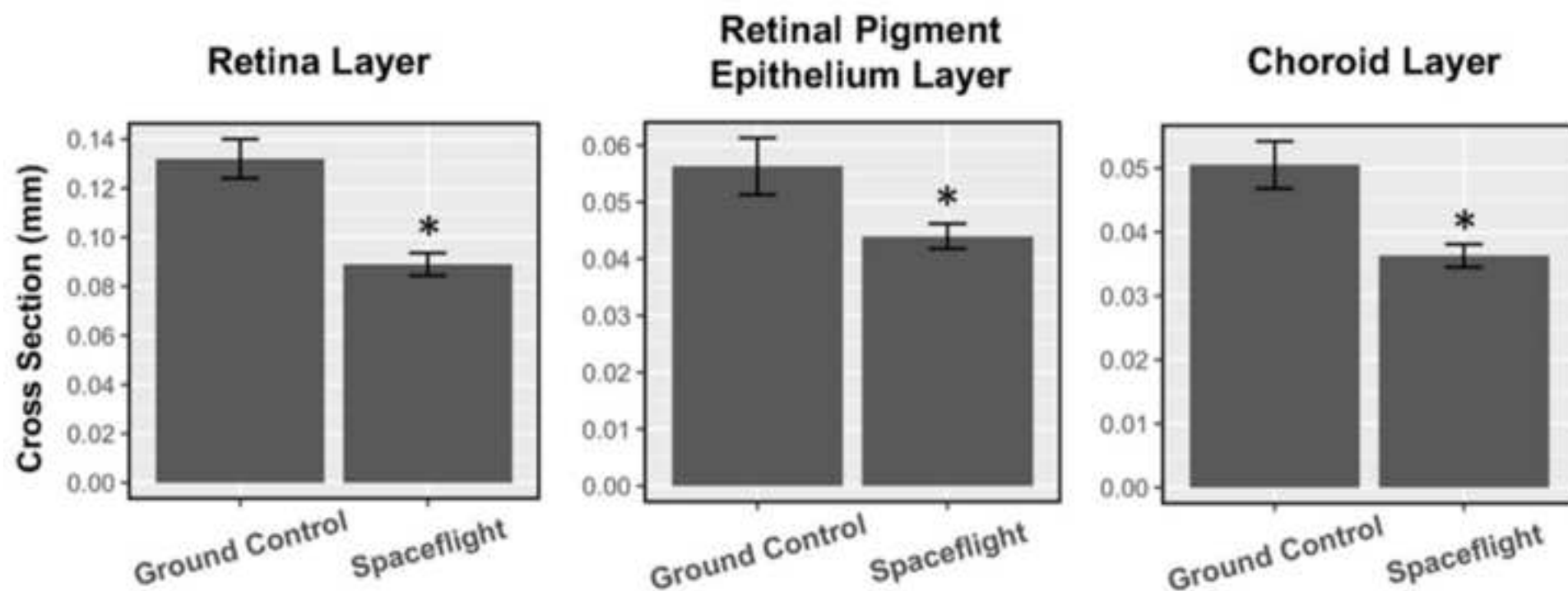


Figure 4



Name of Material/Equipment	Company	Catalog Number	Comments/Description
10 wt. % phosphomolybdic	Sigma	12026-57-2	
Ethanol absolute by Baker Analyzed	VWR	80252500	
Phosphate Buffered Saline (PBS)	Merck	L1825	
X-ray micro-CT system SkyScan 1272 scanner	Bruker		

**Editor, Journal of visualized experiments**

July 31, 2020

**Dear JoVE's Editor,**

We were extremely pleased to know that our manuscript was rated as potentially acceptable for publication in *the Journal of visualized experiments*. The article was subjected to an adequate revision, and changes were given to the questions raised by the referee.

Enclosed is the revised copy of the manuscript JoVE61227R1 entitled "Assessment of global ocular structure following spaceflight using micro-computed tomography (micro-CT) imaging method".

We appreciate the reviewer's comments, as they have enabled us to strengthen and clarify the manuscript and video. We hope that our corrections and amendments are appropriate and that the article may now be reconsidered for publication in this journal.

Please find in the edited version our changes to the issues pointed out by the reviewer.

Thank you for your consideration.

Sincerely yours,

Gina D. Roque Torres

[gdrtorres@llu.edu](mailto:gdrtorres@llu.edu)



## Response to editorial and reviewers' comments (JoVE61227R1)

Our responses to each of the comments are provided in red.

### Editorial comments:

Changes to be made by the Author(s) regarding the written manuscript:

1. There continues to be scattered typos throughout the manuscript. Please copy-edit the manuscript once more and see the comments in the attached manuscript.

R: The authors proofread the manuscript to ensure that there are no spelling and/or grammar errors.

Changes to be made by the Author(s) regarding the video:

Chapter Title Cards:

2. 00:12 Introduction Please hold on this card for just another moment.

R: The video was edited.

3. 02:10 A brief "Protocol" card flashes in here. This glitch should be removed.

R: The video was edited.

Video & Audio Editing:

4. 04:30 A heavy breath or table shifting is heard here that should be removed if possible.

R: The audio was edited.

5. 07:05 For this shot of Dr. Roque-Torres, is it possible to scale up her shot to eliminate the letter boxing on the top and bottom of the frame? The sides will be cut off a little but it may look better overall.

R: The video was edited.



**Editor, Journal of visualized experiments**

August 20, 2020

**Dear JoVE's Editor,**

We were extremely pleased to know that our manuscript was rated as potentially acceptable for publication in *the Journal of visualized experiments*. The article was subjected to an adequate revision, and changes were given to the questions raised by the referee.

Enclosed is the revised copy of the manuscript JoVE61227R1 entitled "Assessment of global ocular structure following spaceflight using micro-computed tomography (micro-CT) imaging method".

We appreciate the reviewer's comments, as they have enabled us to strengthen and clarify the manuscript and video. We hope that our corrections and amendments are appropriate and that the article may now be reconsidered for publication in this journal.

Please find in the edited version our changes to the issues pointed out by the reviewer.

Thank you for your consideration.

Sincerely yours,  
Gina D. Roque Torres  
gdrtorres@llu.edu

## Response to editorial and reviewers' comments (JoVE61227R1)

Our responses to each of the comments are provided in red.

### Editorial comments:

Changes to be made by the Author(s) regarding the video:

#### 1. Text Placement and Duration:

- 02:10 There is an issue with the duration of the title cards here. The final "protocol" card with the words in white font: "Sample preparation for micro-CT scanning..." flashes in and cannot be read because the duration is too short.

R: The time of the final Protocol card had been increased.

- The name caption for Dr. Roque-Torres appears too early (@07:31) during the Results section. It should appear when she appears, currently @07:50.

R: The caption duration was edited.

#### 2. Video & Audio Editing:

- 00:13 The words "which include ... gravity" are cut off here.

R: The audio was edited in the best way we could

- 04:19 A heavy breath or table shifting is heard here that should be removed if possible. Changes to be made by the Author(s) regarding the written manuscript:

R: The audio was edited in the best way we could

## ARTICLE AND VIDEO LICENSE AGREEMENT

Title of Article: ASSESSMENT OF GLOBAL OCULAR STRUCTURE FOLLOWING SPACEFLIGHT USING MICRO-COMPUTED TOMOGRAPHY (MICRO-CT) IMAGING METHOD.

Author(s): GINA D. ROQUE-TORRES, NINA C. NISHIYAMA, SETA STANBOULY, XIAO WEN MAO

Item 1: The Author elects to have the Materials be made available (as described at <http://www.jove.com/publish>) via:

☐

Standard Access

☒

Open Access

Item 2: Please select one of the following items:

☒

The Author is **NOT** a United States government employee.

☐

The Author is a United States government employee and the Materials were prepared in the course of his or her duties as a United States government employee.

## ARTICLE AND VIDEO LICENSE AGREEMENT

1. **Defined Terms.** As used in this Article and Video License Agreement, the following terms shall have the following meanings: “**Agreement**” means this Article and Video License Agreement; “**Article**” means the article specified on the last page of this Agreement, including any associated materials such as texts, figures, tables, artwork, abstracts, or summaries contained therein; “**Author**” means the author who is a signatory to this Agreement; “**Collective Work**” means a work, such as a periodical issue, anthology or encyclopedia, in which the Materials in their entirety in unmodified form, along with a number of other contributions, constituting separate and independent works in themselves, are assembled into a collective whole; “**CRC License**” means the Creative Commons Attribution-Non Commercial-No Derivs 3.0 Unported Agreement, the terms and conditions of which can be found at: <http://creativecommons.org/licenses/by-nc-nd/3.0/legalcode>; “**Derivative Work**” means a work based upon the Materials or upon the Materials and other pre-existing works, such as a translation, musical arrangement, dramatization, fictionalization, motion picture version, sound recording, art reproduction, abridgment, condensation, or any other form in which the Materials may be recast, transformed, or adapted; “**Institution**” means the institution, listed on the last page of this Agreement, by which the Author was employed at the time of the creation of the Materials; “**JoVE**” means MyJoVE Corporation, a Massachusetts corporation and the publisher of The Journal of Visualized Experiments; “**Materials**” means the Article and / or the Video; “**Parties**” means the Author and JoVE; “**Video**” means any video(s) made by the Author, alone or in conjunction with any other parties, or by JoVE or its affiliates or agents, individually or in collaboration with the Author or any other parties, incorporating all or any portion

of the Article, and in which the Author may or may not appear.

2. **Background.** The Author, who is the author of the Article, in order to ensure the dissemination and protection of the Article, desires to have the JoVE publish the Article and create and transmit videos based on the Article. In furtherance of such goals, the Parties desire to memorialize in this Agreement the respective rights of each Party in and to the Article and the Video.

3. **Grant of Rights in Article.** In consideration of JoVE agreeing to publish the Article, the Author hereby grants to JoVE, subject to **Sections 4 and 7** below, the exclusive, royalty-free, perpetual (for the full term of copyright in the Article, including any extensions thereto) license (a) to publish, reproduce, distribute, display and store the Article in all forms, formats and media whether now known or hereafter developed (including without limitation in print, digital and electronic form) throughout the world, (b) to translate the Article into other languages, create adaptations, summaries or extracts of the Article or other Derivative Works (including, without limitation, the Video) or Collective Works based on all or any portion of the Article and exercise all of the rights set forth in (a) above in such translations, adaptations, summaries, extracts, Derivative Works or Collective Works and (c) to license others to do any or all of the above. The foregoing rights may be exercised in all media and formats, whether now known or hereafter devised, and include the right to make such modifications as are technically necessary to exercise the rights in other media and formats. If the “Open Access” box has been checked in **Item 1** above, JoVE and the Author hereby grant to the public all such rights in the Article as provided in, but subject to all limitations and requirements set forth in, the CRC License.



4. **Retention of Rights in Article.** Notwithstanding the exclusive license granted to JoVE in **Section 3** above, the Author shall, with respect to the Article, retain the non-exclusive right to use all or part of the Article for the non-commercial purpose of giving lectures, presentations or teaching classes, and to post a copy of the Article on the Institution's website or the Author's personal website, in each case provided that a link to the Article on the JoVE website is provided and notice of JoVE's copyright in the Article is included. All non-copyright intellectual property rights in and to the Article, such as patent rights, shall remain with the Author.

5. **Grant of Rights in Video – Standard Access.** This **Section 5** applies if the "Standard Access" box has been checked in **Item 1** above or if no box has been checked in **Item 1** above. In consideration of JoVE agreeing to produce, display or otherwise assist with the Video, the Author hereby acknowledges and agrees that, Subject to **Section 7** below, JoVE is and shall be the sole and exclusive owner of all rights of any nature, including, without limitation, all copyrights, in and to the Video. To the extent that, by law, the Author is deemed, now or at any time in the future, to have any rights of any nature in or to the Video, the Author hereby disclaims all such rights and transfers all such rights to JoVE.

6. **Grant of Rights in Video – Open Access.** This **Section 6** applies only if the "Open Access" box has been checked in **Item 1** above. In consideration of JoVE agreeing to produce, display or otherwise assist with the Video, the Author hereby grants to JoVE, subject to **Section 7** below, the exclusive, royalty-free, perpetual (for the full term of copyright in the Article, including any extensions thereto) license (a) to publish, reproduce, distribute, display and store the Video in all forms, formats and media whether now known or hereafter developed (including without limitation in print, digital and electronic form) throughout the world, (b) to translate the Video into other languages, create adaptations, summaries or extracts of the Video or other Derivative Works or Collective Works based on all or any portion of the Video and exercise all of the rights set forth in (a) above in such translations, adaptations, summaries, extracts, Derivative Works or Collective Works and (c) to license others to do any or all of the above. The foregoing rights may be exercised in all media and formats, whether now known or hereafter devised, and include the right to make such modifications as are technically necessary to exercise the rights in other media and formats. For any Video to which this **Section 6** is applicable, JoVE and the Author hereby grant to the public all such rights in the Video as provided in, but subject to all limitations and requirements set forth in, the CRC License.

7. **Government Employees.** If the Author is a United States government employee and the Article was prepared in the course of his or her duties as a United States government employee, as indicated in **Item 2** above, and any of the licenses or grants granted by the Author hereunder exceed the scope of the 17 U.S.C. 403, then the rights granted hereunder shall be limited to the maximum

rights permitted under such statute. In such case, all provisions contained herein that are not in conflict with such statute shall remain in full force and effect, and all provisions contained herein that do so conflict shall be deemed to be amended so as to provide to JoVE the maximum rights permissible within such statute.

8. **Protection of the Work.** The Author(s) authorize JoVE to take steps in the Author(s) name and on their behalf if JoVE believes some third party could be infringing or might infringe the copyright of either the Author's Article and/or Video.

9. **Likeness, Privacy, Personality.** The Author hereby grants JoVE the right to use the Author's name, voice, likeness, picture, photograph, image, biography and performance in any way, commercial or otherwise, in connection with the Materials and the sale, promotion and distribution thereof. The Author hereby waives any and all rights he or she may have, relating to his or her appearance in the Video or otherwise relating to the Materials, under all applicable privacy, likeness, personality or similar laws.

10. **Author Warranties.** The Author represents and warrants that the Article is original, that it has not been published, that the copyright interest is owned by the Author (or, if more than one author is listed at the beginning of this Agreement, by such authors collectively) and has not been assigned, licensed, or otherwise transferred to any other party. The Author represents and warrants that the author(s) listed at the top of this Agreement are the only authors of the Materials. If more than one author is listed at the top of this Agreement and if any such author has not entered into a separate Article and Video License Agreement with JoVE relating to the Materials, the Author represents and warrants that the Author has been authorized by each of the other such authors to execute this Agreement on his or her behalf and to bind him or her with respect to the terms of this Agreement as if each of them had been a party hereto as an Author. The Author warrants that the use, reproduction, distribution, public or private performance or display, and/or modification of all or any portion of the Materials does not and will not violate, infringe and/or misappropriate the patent, trademark, intellectual property or other rights of any third party. The Author represents and warrants that it has and will continue to comply with all government, institutional and other regulations, including, without limitation all institutional, laboratory, hospital, ethical, human and animal treatment, privacy, and all other rules, regulations, laws, procedures or guidelines, applicable to the Materials, and that all research involving human and animal subjects has been approved by the Author's relevant institutional review board.

11. **JoVE Discretion.** If the Author requests the assistance of JoVE in producing the Video in the Author's facility, the Author shall ensure that the presence of JoVE employees, agents or independent contractors is in accordance with the relevant regulations of the Author's institution. If more than one author is listed at the beginning of this Agreement, JoVE may, in its sole

discretion, elect not take any action with respect to the Article until such time as it has received complete, executed Article and Video License Agreements from each such author. JoVE reserves the right, in its absolute and sole discretion and without giving any reason therefore, to accept or decline any work submitted to JoVE. JoVE and its employees, agents and independent contractors shall have full, unfettered access to the facilities of the Author or of the Author's institution as necessary to make the Video, whether actually published or not. JoVE has sole discretion as to the method of making and publishing the Materials, including, without limitation, to all decisions regarding editing, lighting, filming, timing of publication, if any, length, quality, content and the like.

**12. Indemnification.** The Author agrees to indemnify JoVE and/or its successors and assigns from and against any and all claims, costs, and expenses, including attorney's fees, arising out of any breach of any warranty or other representations contained herein. The Author further agrees to indemnify and hold harmless JoVE from and against any and all claims, costs, and expenses, including attorney's fees, resulting from the breach by the Author of any representation or warranty contained herein or from allegations or instances of violation of intellectual property rights, damage to the Author's or the Author's institution's facilities, fraud, libel, defamation, research, equipment, experiments, property damage, personal injury, violations of institutional, laboratory, hospital, ethical, human and animal treatment, privacy or other rules, regulations, laws, procedures or guidelines, liabilities and other losses or damages related in any way to the submission of work to JoVE, making of videos by JoVE, or publication in JoVE or elsewhere by JoVE. The Author shall be responsible for, and shall hold JoVE harmless from, damages caused by lack of sterilization, lack of cleanliness or by contamination due to

the making of a video by JoVE its employees, agents or independent contractors. All sterilization, cleanliness or decontamination procedures shall be solely the responsibility of the Author and shall be undertaken at the Author's expense. All indemnifications provided herein shall include JoVE's attorney's fees and costs related to said losses or damages. Such indemnification and holding harmless shall include such losses or damages incurred by, or in connection with, acts or omissions of JoVE, its employees, agents or independent contractors.

**13. Fees.** To cover the cost incurred for publication, JoVE must receive payment before production and publication of the Materials. Payment is due in 21 days of invoice. Should the Materials not be published due to an editorial or production decision, these funds will be returned to the Author. Withdrawal by the Author of any submitted Materials after final peer review approval will result in a US\$1,200 fee to cover pre-production expenses incurred by JoVE. If payment is not received by the completion of filming, production and publication of the Materials will be suspended until payment is received.

**14. Transfer, Governing Law.** This Agreement may be assigned by JoVE and shall inure to the benefits of any of JoVE's successors and assignees. This Agreement shall be governed and construed by the internal laws of the Commonwealth of Massachusetts without giving effect to any conflict of law provision thereunder. This Agreement may be executed in counterparts, each of which shall be deemed an original, but all of which together shall be deemed to be one and the same agreement. A signed copy of this Agreement delivered by facsimile, e-mail or other means of electronic transmission shall be deemed to have the same legal effect as delivery of an original signed copy of this Agreement.