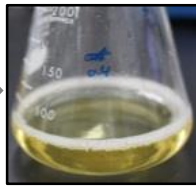
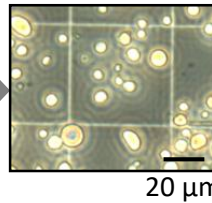




1. Preparation  
of fresh spore  
suspension  
**(7 days)**

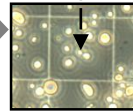
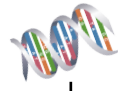


2. Preculture  
**(1.5 days)**



3. Preparation  
of protoplasts

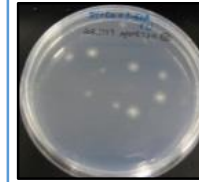
Target DNA



4. Introduction of  
DNA for secretory  
production of  
protein

**(1 day)**

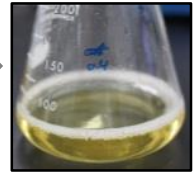
### Conventional screening



Acquisition of  
colonies  
**(7 days)**



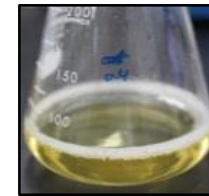
Selection between  
true/false  
transformants  
**(7 days)**



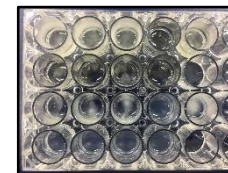
Evaluation of the secretory  
protein  
production  
**(7 days)**



### Direct Liquid culture (DLC) screening



5-1. Simultaneous  
selection/evaluation  
in a 200 mL flask  
**(6 days)**



5-2. Simultaneous  
selection/evaluation in  
a 24 well microplate  
**(10 days)**