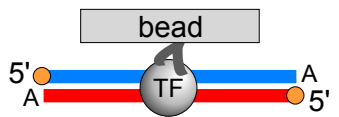
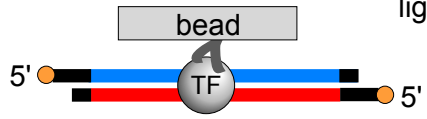


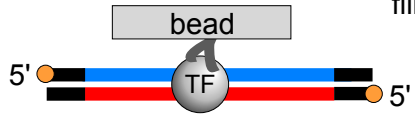
● Phosphate    end-repair, dA-tailing    step 8



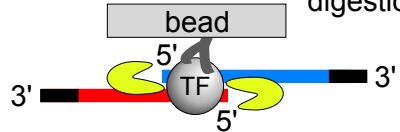
● T    index adapter ligation    step 9



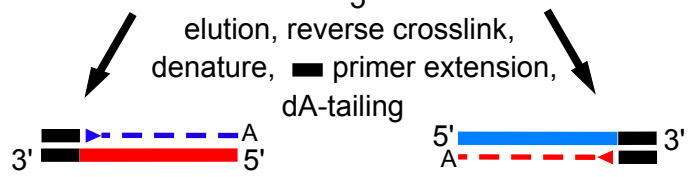
fill-in reaction    step 10



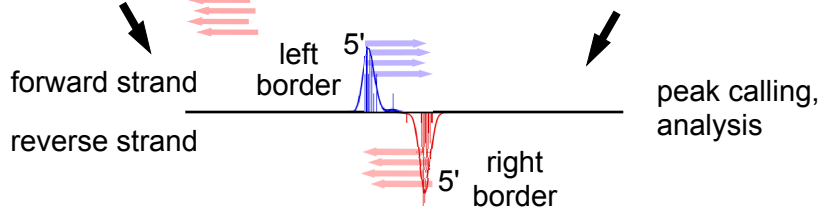
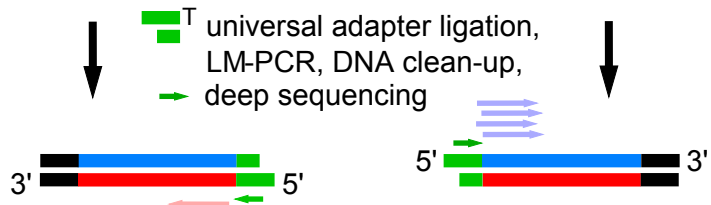
λ lambda exonuclease digestion    step 11



elution, reverse crosslink, denature, primer extension, dA-tailing    steps 12-15



● T universal adapter ligation, LM-PCR, DNA clean-up, deep sequencing    steps 16-19



enzymatic reactions on beads