

Journal of Visualized Experiments

Sampling and analysis of animal scent signals

--Manuscript Draft--

Article Type:	Invited Methods Article - Author Produced Video
Manuscript Number:	JoVE60902R5
Full Title:	Sampling and analysis of animal scent signals
Corresponding Author:	Stefano Vaglio University of Wolverhampton Faculty of Science and Engineering Wolverhampton, UNITED KINGDOM
Corresponding Author's Institution:	University of Wolverhampton Faculty of Science and Engineering
Corresponding Author E-Mail:	S.Vaglio@wlv.ac.uk
Order of Authors:	David Walker Stefano Vaglio
Additional Information:	
Question	Response
Please indicate whether this article will be Standard Access or Open Access.	Standard Access (US\$2,400)
Please indicate the city, state/province, and country where this article will be filmed . Please do not use abbreviations.	Wolverhampton, UK
Please confirm that you have read and agree to the terms and conditions of the author license agreement that applies below:	I agree to the UK Author License Agreement (for UK authors only)
Please specify the section of the submitted manuscript.	Chemistry
Please indicate whether this article will be Standard Access or Open Access.	Standard Access (US\$1200)
Please provide any comments to the journal here.	

TITLE:**Sampling and Analysis of Animal Scent Signals****AUTHORS AND AFFILIATIONS:**

David Walker^{1,*}, Stefano Vaglio^{1,2,*}

¹Department of Biology, Chemistry and Forensic Science, University of Wolverhampton, Wolverhampton, UK

²Department of Anthropology & Behavior, Ecology and Evolution Research Centre, Durham University, Durham, UK

*These authors contributed equally.

Corresponding Author:

Stefano Vaglio (S.Vaglio@wlv.ac.uk)

Email Addresses of Co-author:

David Walker (D.Walker7@wlv.ac.uk)

KEYWORDS:

headspace solid-phase microextraction, gas chromatography-mass spectrometry, animal communication, scent-marking, olfaction, signalling

SUMMARY:

We have developed an effective methodology for sampling and analysis of odor signals in order to understand how they may be used in animal communication. Particularly, we use headspace solid-phase microextraction coupled with gas chromatography-mass spectrometry to analyze the volatile components of animal odors and scent-markings.

ABSTRACT:

We have developed an effective methodology for sampling and analysis of odor signals, by using headspace solid-phase microextraction coupled with gas chromatography-mass spectrometry, to understand how they may be used in animal communication. This technique allows the semi-quantitative analysis of the volatile components of odor secretions by enabling the separation and tentative identification of the components in the sample, followed by the analysis of peak area ratios to look for trends that could signify compounds that may be involved in signaling. The key strengths of this current approach are the range of sample types that can be analyzed; the lack of need for any complex sample preparation or extractions; the ability to separate and analyze the components of a mixture; the identification of the components detected; and the capability to provide semi-quantitative and potentially quantitative information on the components detected. The main limitation to the methodology relates to the samples themselves. Since the components of specific interest are volatile, and these could easily be lost, or their concentrations altered, it is important that the samples are stored and transported appropriately after their collection. This also means that sample storage

and transport conditions are relatively costly. This method can be applied to a variety of samples (including urine, feces, hair and scent-gland odor secretions). These odors consist of complex mixtures, occurring in a range of matrices, and thus necessitate the use of techniques to separate the individual components and extract the compounds of biological interest.

INTRODUCTION:

Very little is known about the chemical changes underpinning the olfactory signals in animals¹, also because of methodological challenges in recording and quantifying volatile chemical profiles of odors². There are several potential pitfalls when working with highly complex, chemical matrices; these include when sampling and analyzing the odor samples³.

At the Rosalind Franklin Science Center, University of Wolverhampton, we are undertaking the analysis of odors and scent-marks to understand how they may be used by animals. We combine semiochemistry with behavioral ecology, endocrinology and cytology to improve our understanding of the role played by olfactory signals in animal communication.

We have developed a methodology and then analyzed odors and markings from a variety of species including several non-human primates (i.e., crowned lemurs, red-ruffed lemurs, Japanese macaques, olive baboons, chimpanzees) and other mammals (i.e., cats, cows). We have collected and analyzed a variety of samples, including urine, feces, hair and scent-gland odor secretions. These odors and scent-marks consist of complex mixtures of compounds and therefore any methodology used for their analysis need to include some form of separatory technique. As illustrated, they also occur in a range of matrices which necessitates the use of techniques to extract the components of interest.

Previous studies by Vaglio et al.⁴ and other authors⁵ used dynamic headspace extraction (DHS) with gas chromatography-mass spectrometry (GC-MS) while direct solvent extraction⁶ and complex solvent extractions⁷ have also been used. Particularly, dynamic headspace sampling involves purging the headspace with a known volume of inert gas that ultimately removes all volatile compounds with the exception of those showing a strong affinity for the sample matrix (for example, polar compounds in aqueous samples).

For the current methodology, we have adopted the technique of headspace solid-phase microextraction (HS-SPME) coupled with GC-MS. In particular, we have developed and enhanced the methodology already used by Vaglio et al. in its previous GC-MS laboratory⁸⁻¹⁰.

Solventless extraction techniques are very effective for analyzing small, highly volatile compounds (which otherwise can be lost easily from a sample) because these methods immobilize compounds on a stable, solid phase support. The HS-SPME uses a fiber coated with an adsorbent polymer to capture volatile compounds in the sample headspace or to extract dissolved compounds by immersion in an aqueous biological fluid¹¹. The polymer coating does not bind the compounds strongly, therefore by heating in the injection port of the GC they can be removed. This method is more powerful than solvent extraction techniques and also more effective than DHS.

In the current approach samples are contained within glass vials. These vials are warmed to a temperature of 40 °C to simulate animal body temperature in order to promote the volatile components of the scent-mark to occupy the head-space of the vial. A SPME fiber, coated with 65 µm of polydimethylsiloxane/divinylbenzene (PDMS/DVB) sorbent material, is exposed to the headspace environment and volatile components from the sample are adsorbed onto the fiber. On heating the fiber in the inlet port of a GC-MS, the volatile components are desorbed from the fiber and then separated by the GC. Mass spectral fragmentation patterns are obtained for each component using the MS. By comparison of these mass spectra against mass spectral databases, it can be possible to tentatively identify the components of the scent-mark. Through the use of an auto-sampler, we are able to analyze multiple samples in batches in a consistent manner.

Given that each type of SPME fiber has a different affinity with polar chemicals, the fiber is usually chosen depending on the polarity and/or molecular weight of the target chemical compounds. In addition, the GC conditions are changed depending on the type of GC column and the characteristics of the target chemical compounds.

This technique allows the semi-quantitative analysis of the volatile components of scent-markings by enabling the separation and tentative identification of the components in the sample, followed by the analysis of peak area ratios to look for trends that could signify components of the scent-marking that may be involved in signaling.

The key strengths of this current approach are:

- The range of sample types that can be analyzed.
- No complex sample preparation or extractions are required.
- The ability to analyze volatile components.
- The ability to separate the components of a mixture.
- To be able to identify the components detected.
- The ability to provide semi-quantitative and potentially quantitative information on the components detected.

PROTOCOL:

1. Sample collection

1.1. Sample odors that are one of the following:

1.1.1. Collect spontaneously released by habituated study subjects (e.g., zoo primates) via scent-marking on sterile filter paper (e.g., scent-gland odor secretions) or directly into vials (e.g., urine).

1.1.2. Collect by rubbing sterile cotton swabs after training study subjects by using positive reinforcement training.

133
134 1.1.3. Collect by rubbing sterile cotton swabs after sedation of study subjects.
135

136 1.2. Place samples into sterile 10 mL screw-capped clear glass vials, and seal with screw topped
137 caps incorporating FTFE/silicone septa. Immediately store them at -20 °C.
138

139 NOTE: It is vital to use clean personal protective equipment, such as nitrile gloves; change them
140 frequently; avoid direct skin contact with samples and vials. It is preferred to use brand-new
141 vials; however, in case of used vials, it is vital to pre-clean the vials, and then use the same
142 protocol.
143

144 1.3. Take environmental blanks every time scent-marks are collected. For example, collect the
145 sampling media (e.g., filter paper or swab) and a headspace vial that are exposed to the
146 environment while sampling is undertaken.
147

148 **2. Sample preparation** 149

150 2.1. Prepare samples in the field by cutting with a blade an approximate 10 mm square from a
151 scent-marked filter paper, or the head of the swab, and placing it in a 10 mL screw-topped
152 head-space vial.
153

154 2.2. After each sample has been prepared, dispose or clean the blade used to cut the sampling
155 media using an appropriate antibacterial wipe and/or alcohol and dry thoroughly.
156

157 2.3. Store all samples at -20 °C.
158

159 NOTE: Preferred at -20 °C or otherwise as low as practically possible in the field.
160

161 **3. Preparation for analysis** 162

163 3.1. Remove samples from the freezer and allow to warm naturally to room temperature for at
164 least 1 h.
165

166 3.2. Set up the analytical method on the GC-MS as follows:
167

168 3.2.1. For SPME analysis conditions, follow the manufacturer's directions to condition SPME
169 fibers before first use: fiber pre-condition (260 °C for 5 min), sample incubation (40 °C for 2
170 min), extraction time (15 min), desorption time (2 min), and fiber post-condition (260 °C for 20
171 min).
172

173 3.2.2. Use the following GC conditions: column (HP5-MS 30 m x 0.25 mm; 0.25 µm), injector
174 temperature (270 °C), flow rate (1 mL/min), injection mode (splitless), GC oven profile (45 °C for
175 2 min; 4 °C/min to 170 °C; 20 °C/min to 300 °C), MSD transfer line (280 °C).
176

NOTE: To improve between sample retention time consistency the analytical method is retention time locked).

3.2.3. Use the following MSD conditions: solvent delay (2.5 min) and scan range (29 to 400 amu).

NOTE: A range of 10 to 400 was used in previous protocols⁴.

3.3. Ensure that the purge gas supply to the fiber conditioning unit is turned on.

NOTE: It is vital that the SPME assembly is correctly installed in the auto-sampler and that it is aligned to the auto-sampler trays, fiber conditioning unit and GC inlet port. Incorrect alignment could result in damage or destruction of the SPME fiber.

4. Analysis

4.1. Place an empty headspace vial (to act as a system blank) in the first position of the GC-MS auto-sampler tray. Place the environmental blank in the second position of the auto-sampler tray. Place the samples for analysis in the subsequent positions of the auto-sample tray.

4.2. Create an analytical sequence to analyze each sample within the sample tray.

4.2.1. In the MassHunter home screen, select **Sequence | Load sequence**.

4.2.2. Complete the sequence table for all blanks and samples by inserting the appropriate information. Save the completed sequence table.

NOTE: The exact information for the sequence table will be dependent on the laboratories formatting for the table. Minimum information would normally include sample type, sample name, vial location and number, analytical method and data file location and name (allocation of a data file name that matches the sample name aids future data processing). Additional samples can be added to the sequence during the analysis.

4.3. Run the sequence by selecting **Sequence | Run sequence**.

4.4. After analysis return samples to the freezer as soon as possible.

NOTE: it may be possible to reanalyze samples, but it should be noted that some volatile components may have been totally extracted during the initial analysis and some compounds may have undergone thermal and bacterial decomposition at 40 °C, thus the resulting chromatogram may not be thoroughly representative of the original scent-marking.

5. Data analysis

NOTE: Initial data analysis includes the integration of chromatograms to obtain retention time and peak area data together with tentative identification of peaks using ChemStation software and NIST (National Institute of Standards and Technology) mass spectral databases, version MSD F.01.01.2317. Data analysis can be carried out either manually or through a semi-automated method. If the semi-automated method is used then it is sometimes beneficial to undertake a degree of manual data analysis to verify tentative identifications.

5.1. Open the data file by clicking on the appropriate file in the left-hand navigation bar. The total ion chromatogram (TIC) will be displayed in the top window of the data analysis screen.

5.2. To integrate the TIC using the RTE integrator, select **Chromatogram | Integrate**.

5.3. Adjust integration parameters so that peaks that are greater than 3 x baseline noise are integrated. Select **Chromatogram | MS Signal Integration Parameters**. In the output box adjust the minimum peak area as appropriate (1.0 produces acceptable results in our examples).

5.4. To identify peaks and generate a summary report, select **Export Reports | Library search results report to XLS**.

NOTE: The spectral libraries to be searched together with the number of library matches to be displayed need to be preset within the software before a library search can be undertaken.

5.5. The resulting spreadsheet report contains integration data for each peak and a tentative spectral library match to assign identity. Typically, the library quality/library match should be >80 to accept the tentative identification. Save the spreadsheet.

5.6. Identify a peak directly from the TIC.

5.6.1. Choose the peak of interest.

5.6.2. If the peak is small, zoom in by drawing a box around the peak by holding the left hand mouse button down, stretch the box over the peak and release.

5.6.3. Place the cursor line so that it is at the highest point of the peak (or just after).

5.6.4. Double click the right hand mouse button and the mass spectrum for the peak will appear in the lower window of the data analysis screen.

5.6.5. To search the spectral library, move the cursor anywhere in the spectral window and double click the right hand mouse button. The library search results will appear in a new window.

5.6.6. To remove the background noise from a spectrum of interest, first double click the right hand mouse button on the peak in question. Then double click the right hand mouse button in

an area with no peaks immediately in front of the peak of interest. Select **Chromatogram | Subtract spectra**. The subtracted spectrum will display in the lower window of the data analysis screen and will display '(-)' next to the SCAN data in the window header.

REPRESENTATIVE RESULTS:

Following this protocol, we tentatively identified a total of 32 volatile chemical compounds from the analysis of 14 ano-genital scent-marks spontaneously released on filter paper by red-ruffed lemurs (*Varecia variegata rubra*) and compared odor profiles with features of the signaler¹². Naturally occurring volatile compounds, such as hydrocarbons, terpenes, terpene alcohols and ketones, were present within these profiles and included compounds that had previously been found to act as sex pheromones and cues to fitness in other animal species. The compounds that have been tentatively identified are listed in **Table 1**. Representative chromatograms (1 from a control and 1 from a lemur scent-mark) are shown in **Figure 1**. The number and relative abundance of the components varied from sample to sample across different study subjects. However, six compounds (benzaldehyde, 2-ethyl-1-hexanol, p-cresol, cis-p-mentha-2,8-dien-1-ol, 2-pinen-4-one, pentadecane) were present in all samples.

The results of this study suggested that red-ruffed lemurs use scent-marking to convey information about sex and female age, with ano-genital marking playing a role in socio-sexual communication.

Another representative outcome following the use of this protocol was our study of fertility advertisement by female olive baboons (*Papio anubis*) (Vaglio et al. unpublished data). We identified a total of 74 volatile compounds from the analysis of 385 female baboon vaginal odor samples. These compounds included a range of naturally occurring odorous volatile compounds such as ketones, alcohols, aldehydes, terpenes, volatile fatty acids and hydrocarbons. Typical chromatograms used to compare blank control and female baboon vaginal odor samples from fertile and non-fertile periods are shown in **Figure 2**. We examined the relationships between vaginal odor profiles and sexual receptivity of female baboons. Our results showed that the total amount of vaginal odor differs with fertility suggesting that odor might play a role in signaling female baboon fertility. We also found differences in vaginal odor between group types but we could not distinguish the effects of group composition, female age and parity.

FIGURE AND TABLE LEGENDS:

Figure 1. Example chromatograms; (top chromatogram – 'control') the control sample, showing contaminants; (bottom chromatogram – 'lemur scent-mark') one adult female red-ruffed lemur ano-genital odor secretions, showing contaminants and meaningful biological compounds. Red arrows indicate the six meaningful biological compounds which were found in all samples: (a) benzaldehyde; (b) 2-ethyl-1hexanol; (c) p-cresol; (d) cis-p-mentha-2,8-dien-1-ol; (e) 2-pinen-4-one; (f) pentadecane. This figure has been modified from Janda et al.¹².

Figure 2. Example chromatogram from (top chromatogram – 'control') control sample, showing contaminants; (middle chromatogram – 'baboon non-fertile odor') female olive baboon, vaginal

odor sample from non-fertile period; and (bottom chromatogram – ‘baboon fertile odor’) female olive baboon, vaginal odor sample from fertile period.

Table 1. Volatile compounds present in filter paper samples from female red-ruffed lemur anogenital odor secretions identified tentatively using ChemStation software and NIST mass spectral databases, version MSD F.01.01.2317. This table has been modified from Janda et al.¹².

DISCUSSION:

The use of control samples, both environmental controls created at the time of sample collection and system blanks, are crucial for the interpretation of the scent-mark samples. Any peaks attributed to the sampling environment or the instrumental system need to be excluded from scent-mark samples so that only the peaks of interest are included in any interpretation. These controls can also play a role in assessing and monitoring the ‘health’ of the instrumentation.

The protocol includes steps to condition the fiber before and after each extraction. This is made easier by the use of an auto-sampler and ensures that there is no cross contamination from sample to sample.

The main limitation to the methodology relates to the samples themselves. Following collection, it is important that they are stored and transported appropriately. The components of specific interest are volatile, and these could easily be lost, or their concentrations altered. Currently samples are stored and transported frozen, typically at -20°C. As a result there is a significant cost involved in the storage and transport of these samples. Delays in transporting samples to the laboratory for analysis will increase these costs further and could potentially affect the results obtained from the scent-marks. Further research is needed to understand the effect of time and storage on the analytical results obtained from samples. As the components of particular significance are the more volatile components of the scent-marks, it is possible that the levels of these components may alter post sample collection. Consideration may also need to be given to potential bacterial effects within some sample types. For example, in alcohol testing of urine samples, bacteria present in the urine may produce alcohol and therefore increase the levels of alcohol detected.

The current methodology meets all of the requirements previously outlined. It provides good quality results from which further information on the composition of scent-marks is being obtained. However, the analysis is a laboratory based technique that is dependent on the samples being submitted to the laboratory. One potential solution to this limitation would be through the use of portable GC-MS instrumentation, instruments that could be taken into the field where the samples are being taken. This approach would alleviate the need to store and transport samples and would enable the real time analysis of scent-marks potentially providing greater information on the most volatile components of the marks. Several portable GC-MS instruments are available. They utilize different technology to that found in the laboratory based instrumentation, but should provide comparable results. The use of the HS-SPME extraction technique is still applicable. However, as a result of being portable, the instruments

do not offer the option of automated sample introduction; nevertheless, if samples are analyzed as soon as they are collected, daily sample numbers are likely to be manageable for manual injection. Also, in case of field extraction, care should be taken that the SPME fiber does not trap environmental chemicals before use. Currently available instruments are battery powered enabling total portability, but with the provision of some form of power supply (even a small generator), these instruments could be operated for longer periods of time. These instruments by their nature are often designed to be simple to operate, with minimal training and knowledge required. This means that it may not be necessary for highly trained operators to be deployed with the instrument and that they could be operated by those collecting the samples. Detailed interpretation of analytical results could be achieved remotely or when the instrument returns to base.

Another major limitation with methods using SPME fibers is that it is possible to analyze only chemical compounds that exist in abundance in the samples. In particular, far larger amounts of the chemical exist in the samples even when the amount of molecules is subthreshold for the analysis using SPME fibers. In addition, in the context of odor secretions released by animal scent-marks and other animal chemical signals, individual animals tend to use chemical compounds in small amounts to communicate with other animals and/or detect olfactory signals from materials. In other words, the different performances of animal noses and SPME extraction may represent a major challenge to the success of this sampling technique.

Future development of the current methodology could be based around sample collection with the investigation into the use of alternative sorbent materials or sorbent tubes for use with thermal desorption systems. Such developments may go some way to help sample storage and transport conditions.

ACKNOWLEDGMENTS:

We thank Keith Holding for his assistance with chemical analyses at the Rosalind Franklin Science Center, Wolverhampton, and Ben Mantle for the production of the video. We are also grateful to Prof. Gloriano Moneti, Dr. Giuseppe Pieraccini and the members of the University of Florence's Mass Spectrometry Center, Florence, and to Prof. Luca Calamai and Dr. Marco Michelozzi of the CNR's ARCA Lab, Florence, for their help with setting up this methodology. The research projects which included the sampling and analysis methods described in the manuscript were supported by two Marie Skłodowska-Curie Intra European Fellowships (Grant Agreement IDs: 327083, 703611), a small grant ('*The sensory enriched primate*') from the Primate Society of Great Britain, and a small research grant ('*Do hunter-gatherers have a special sense of smell?*') from the British Academy/The Leverhulme Trust to S.V. The lab work needed to set up this methodology also received funding from the Faculty of Science and Engineering's Annual Funding Competition (Wolverhampton) to S.V.

DISCLOSURES:

The authors have nothing to disclose.

REFERENCES:

1. Wyatt, T. D. *Pheromones and Animal Behavior: Chemical Signals and Signatures*. Cambridge University Press. Cambridge, UK (2014).
2. Heymann, E. W. The neglected sense-olfaction in primate behavior, ecology, and evolution. *American Journal of Primatology*. **68** (6), 519-524 (2006).
3. Drea, C. M., Boulet, M., DelBarco-Trillo, J. The “secret” in secretions: Methodological considerations in deciphering primate olfactory communication. *American Journal of Primatology*. **75** (7), 621-642 (2013).
4. Vaglio, S. et al. Sternal gland scent-marking signals sex, age, rank and group identity in captive mandrills. *Chemical Senses*. **41**(2), 177-186 (2016).
5. Marneweck, C., Jürgens, A., Shrader A. M. Dung odours signal sex, age, territorial and oestrous state in white rhinos. *Proceedings of the Royal Society of London B: Biological Sciences*. **284** (1846) (2016).
6. Shear, W. A., Jones, T. H., Miras, H. M. A possible phylogenetic signal in milliped chemical defenses. *Biochemical Systematics and Ecology*. **35**, 838-842 (2007).
7. Kimura, R. Volatile substances in feces, urine and urine-marked feces of feral horses. *Canadian Journal of Animal Science*. **81** (3), 411-420 (2001).
8. Vaglio, S., Minicozzi, P., Bonometti, E., Mello, G., Chiarelli, B. Volatile signals during pregnancy: a possible chemical basis for mother-infant recognition. *Journal of Chemical Ecology*. **35** (1), 131-139 (2009).
9. Setchell, J. M. et al. Chemical composition of scent-gland secretions in an Old World monkey (*Mandrillus sphinx*): influence of sex, male status, and individual identity. *Chemical Senses*. **35** (3), 205-220 (2010).
10. Setchell, J. M. et al. Odour signals MHC genotype in an Old World monkey. *Proceedings of the Royal Society of London B: Biological Sciences*. **278** (1703), 274-280 (2011).
11. Pawliszyn, J. *Solid phase microextraction: theory and practice*. Wiley—VCH. New York, US (1997).
12. Janda, E. D., Perry, K., Hankinson, E., Walker, D., Vaglio, S. Sex differences in scent-marking in captive red-ruffed lemurs. *American Journal of Primatology*. **81** (1), e22951 (2019).

Figure 1

[Click here to access/download;Figure;Figure 1.psd](#)

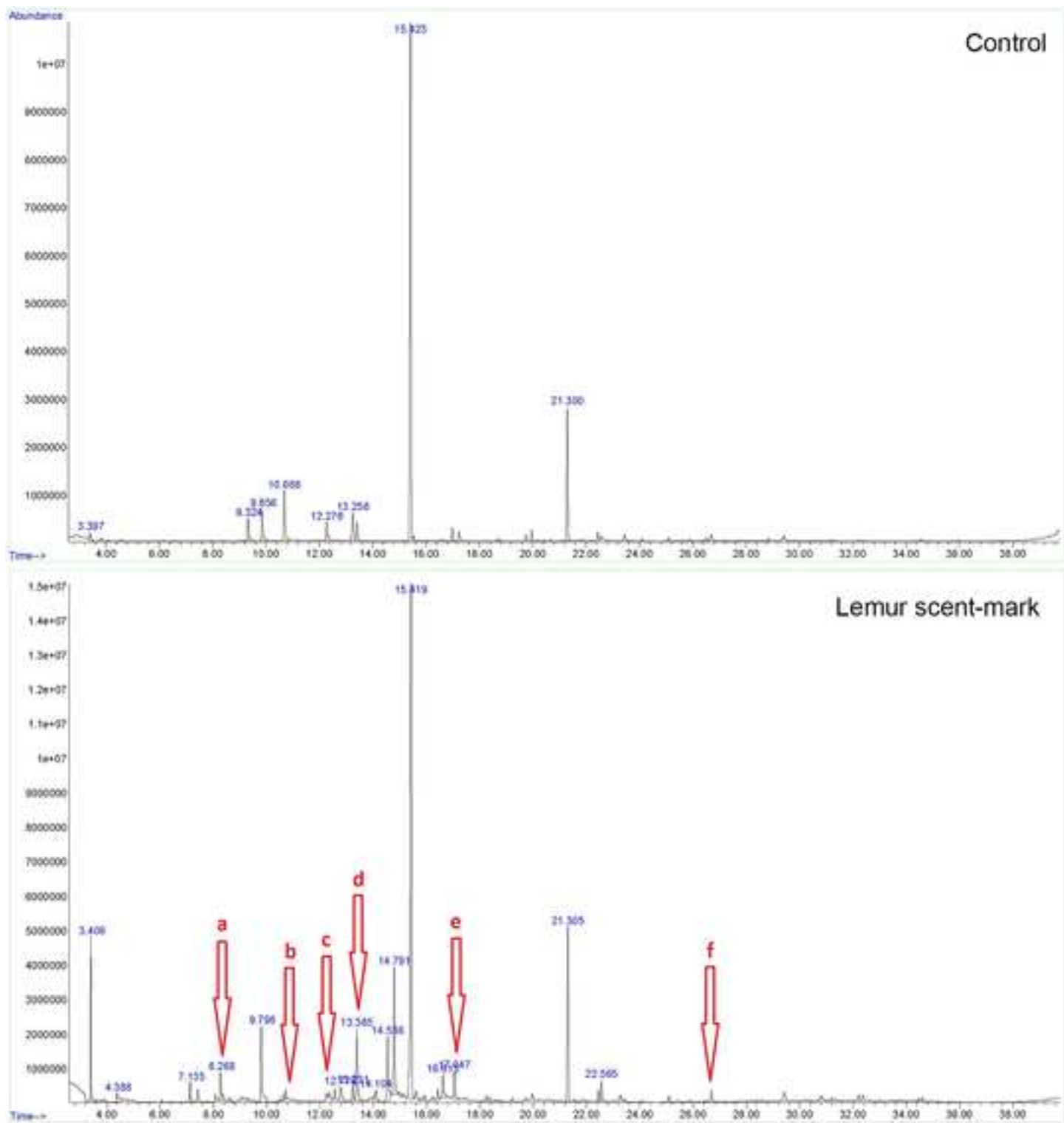
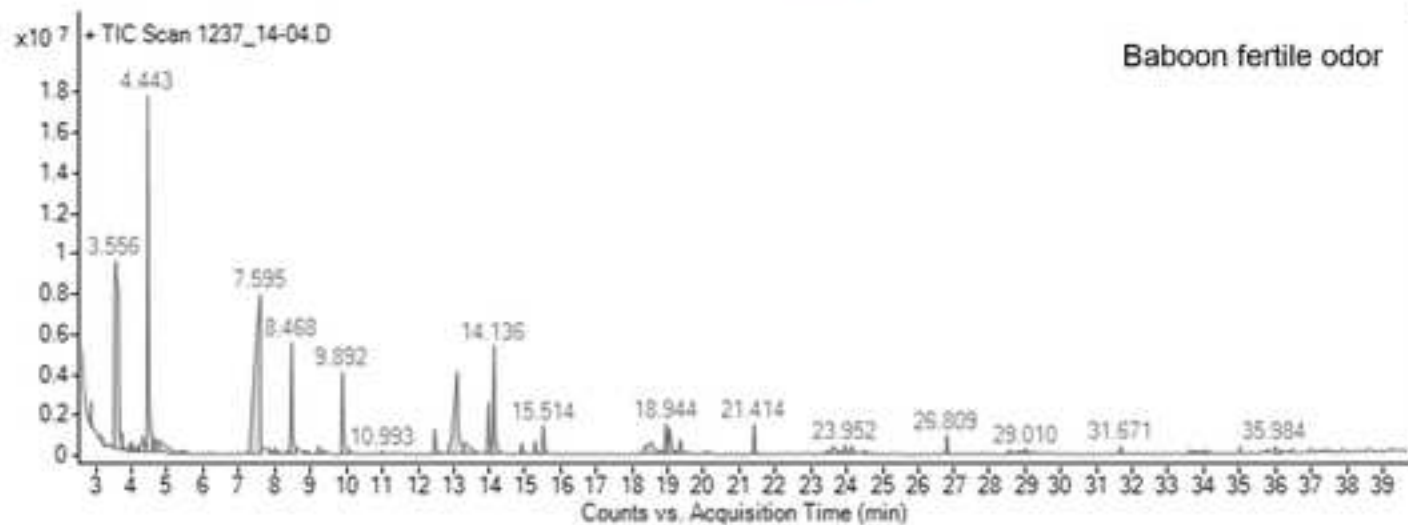
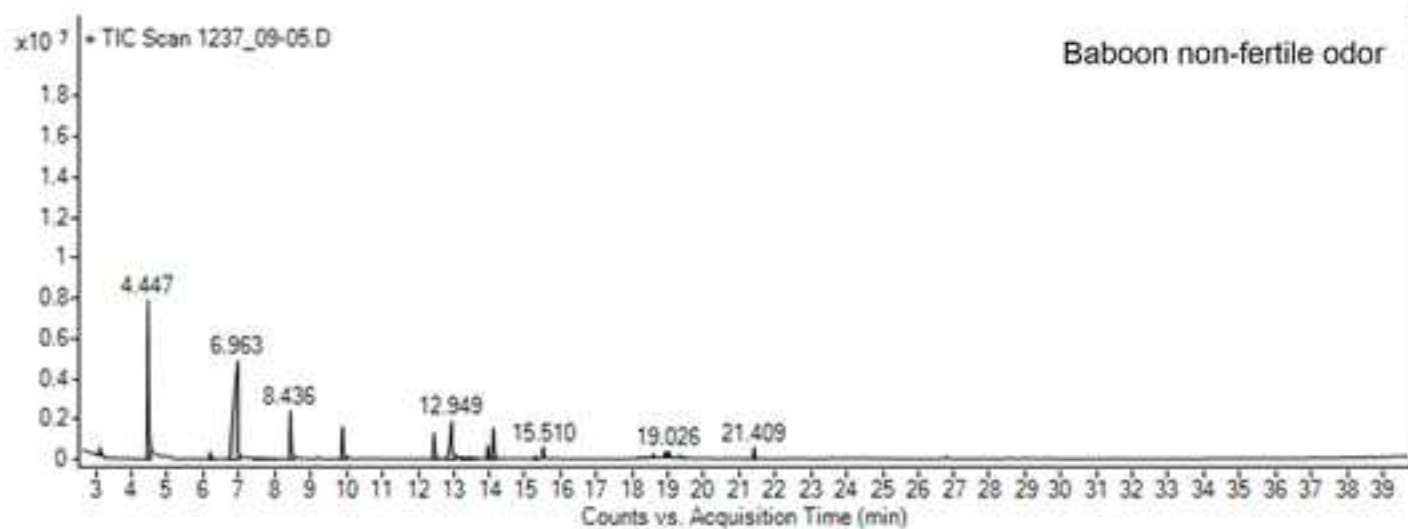
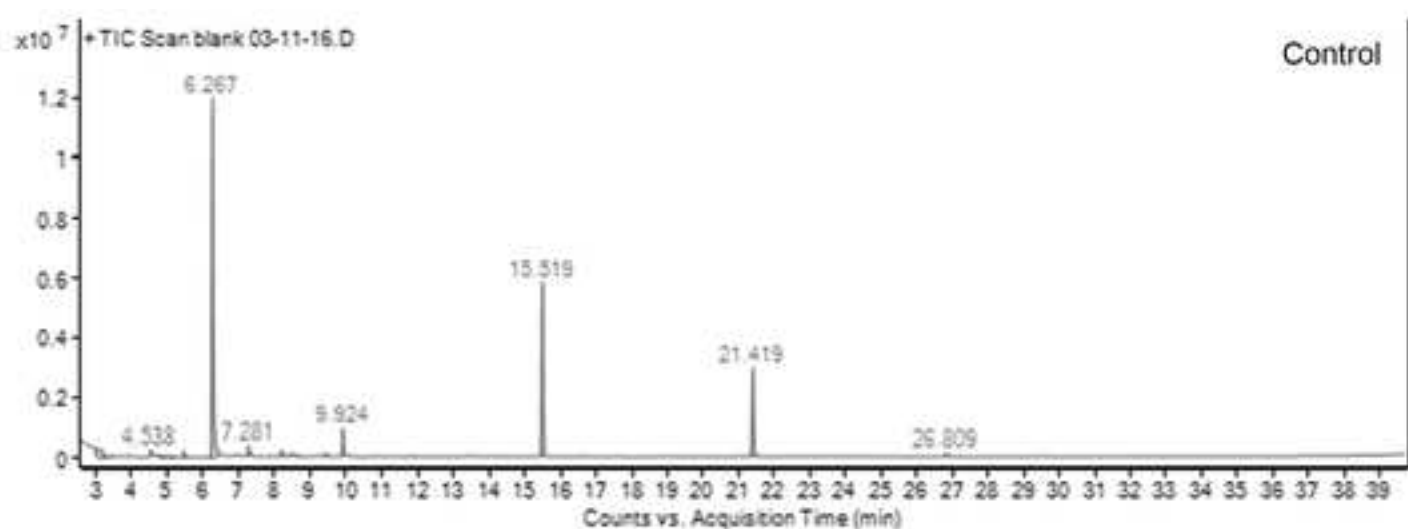


Figure 2

[Click here to access/download;Figure;Figure 2.psd](#)



Retention Time (mins)	Tentative Compound ID	Molecular Weight
3.906	Hexanal	100
6.057	5-methyl-3-hexanone	114
7.413	Alpha-pinene	136
8.077	1-isopropyl-4-methylenebicyclo[3.1.0]hex-2-one	134
8.268	Benzaldehyde	106
8.623	3,7,7-trimethyl-1,3,5-cycloheptatriene	134
9.096	Phenol	94
9.269	6-methoxy-5-hepten-2-one	126
10.72	2-ethyl-1-hexanol	130
12.362	p-Cresol	108
12.553	cis-Verbenol	152
13.385	cis-p-Mentha-2,8-dien-1-ol	152
14.104	1,7,7-Trimethylbicyclo[2.2.1]hepta-2-one	152
14.536	L-Pinocarveol	152
14.791	trans-Verbenol	152
15.605	p-Ethyl-phenol	122
15.928	Terpinen-4-ol	154
16.415	Alpha-Terpineol	154
16.615	Myrtenol	152
17.047	2-Pinen-4-one	150
18.252	Carvone	150
19.217	p-Mentha-1,8-dien-3-one	150
23.283	4,7,7-Trimethylbicyclo[4.1.0]hept-3-ene-2-one	150
23.443	Tetradecane	198
25.094	Geranylacetone	194
25.899	Isomethylionone	206
26.513	Pentadecane	212
30.871	2,6,10-Trimethylpentadecane	254
32.208	Heptadecane	240
32.372	2,6,10-Trimethylhexadecane	268
34.446	n-Tetracosane	338
34.591	2,6,10,14-Tetramethylhexadecane	282

Name of Material/Equipment	Company	Catalog Number	Comments/Description
10 mL autosampler vials	Agilent	5188-5392	10 ml screwtop vials with
18 mm vial caps	Agilent	8010-0139	Magnetic with PTFE/silicone septa
Autosampler	Agilent	GC120 PAL	
Capillary column	Agilent	autosampler	
Data analysis software	Agilent	HP5-MS	30 m x 0.25 mm; 0.25 µm
Gas Chromatograph	Agilent	-	ChemStation
Inlet septa	Agilent	7890B	
Mass Selective Detector	Agilent	5182-3442	Merlin microseal
Reporting software	Agilent	5977A	
Spectral library	Microsoft	-	Excel
Spectral library search program	NIST	-	NIST/EPA/NIH Mass Spectral Library
Splitless Inlet liner	NIST	-	MS Search v.2.2
SPME fibres	Agilent	5190-4048	
	Agilent	SU57345U	65 µm PDMS/DVB fibre

Dear Dr Nam Nguyen,

I send you the revised version of the video-article "**Sampling and analysis of animal scent signals**" (JoVE60902_R3) for publication in the *Journal of Visualized Experiments*.

The video-article has been revised according to the comments provided by the editorial & production department and the reviewers. In particular:

Editorial and production comments:

Changes to be made for the video:

1. Delivery Specifications:

- Videos should be 15 minutes or less in duration.
[Has been reduced down to 14 minutes 59 seconds.](#)
- We will accept 4K videos but they will be downconverted to 1080p when published.
[Has been exported in 1080p.](#)

2. JoVE Video Article Format:

- Additional title cards for the subsections of the Protocol may be helpful. This will help viewers navigate different sections as opposed to searching one long Protocol section. -
[Appropriate title cards have been added.](#)

3. Video Recording Quality:

- 11:41 For software usage, consider adding a Screen Capture insert here and other instances that shows what is being narrated.
[We do not have a screen capture of this, so it could not be added.](#)
- 18:14 There is a video glitch near the bottom of the frame here. Consider checking the original footage and see if it's there. It could be in the exported file only.
[Amended.](#)

4. Video Editing & Graphics/Text:

- 00:00-03:23 There are many opportunities in the introduction for trimming down the length. Consider that not all of the introductory remarks may be necessary to understand the protocol, and make broad edits to the introduction based on content. Then, trim out any long periods of silence or pause.
[Introduction has been trimmed down appropriately.](#)
- 07:01 The conditions list here is somewhat long and detailed. Consider adding a text overlay that allows the audience to read the conditions on-screen. This would be great over

the freeze frame (7:14-8:20) a few seconds after this part. You could also cut down on this section by not narrating all of the conditions and referring the viewers to the on-screen text. Over a minute of a freeze-frame with narrating conditions feels a bit tedious.

Amended to address this comment. This has cut down a significant portion.

- 07:03 There is a flash frame of empty sample vials that jumps in here. Can be removed.

Amended.

- 12:25 Fade or cut away directly from the freeze frame instead of playing out the rest of the clip here.

Amended.

- 13:12 There's a brief shot of a man's head at the computer that can be removed. Go right to the close-up or give more time to the 'side-of-the-head' shot.

Amended.

- 17:44-18:30 This part could be cut down or folded into the previous narration with visual aids. Take a look at the Results section and eliminate any redundant or unnecessary information. Keep in mind that you can always refer viewers to the manuscript on the web site if you need to cut parts out but still want to refer to them.

Amended.

5. Animal Ethics & Third Party Content:

- Since this protocol uses samples collected from animals, it may require an animal ethics declaration between the Introduction and the beginning of the Protocol.

Animal ethics declaration has been added.

- Please add any attribution or credit information for the stock photos included in the video.

All stock photos are royalty free and require no attribution.

6. Please cut out the commercial products. The Agilent device is heavily featured at 0:45, 4:22, 8:07, etc. and these extended shots should be removed. We cannot have the video become an advertisement.

At least 3 of the 4 'close-up' Agilent logos have been blurred. There are still more Agilent logos in the video, but only at important device related information 'protocol mainly'.

We hope that is enough to stop it being considered commercial.

Reviewers' comments:

Reviewer #1:

Manuscript Summary:

The authors addressed comments from both reviewers and improved the manuscript.

Excellent. Thanks.

Reviewer #2:

Accept

Excellent. Thanks.

I thank you very much for your comments and useful suggestions which have helped us prepare a, we believe, much improved video-article.

Sincerely yours

Dr Stefano Vaglio (on behalf of my co-author David Walker)

JOHN WILEY AND SONS LICENSE TERMS AND CONDITIONS

Nov 21, 2019

This Agreement between University of Wolverhampton -- Stefano Vaglio ("You") and John Wiley and Sons ("John Wiley and Sons") consists of your license details and the terms and conditions provided by John Wiley and Sons and Copyright Clearance Center.

License Number	4713740087166
License date	Nov 21, 2019
Licensed Content Publisher	John Wiley and Sons
Licensed Content Publication	American Journal of Primatology
Licensed Content Title	Sex differences in scent-marking in captive red-ruffed lemurs
Licensed Content Author	Stefano Vaglio, David Walker, Emma Hankinson, et al
Licensed Content Date	Jan 21, 2019
Licensed Content Volume	81
Licensed Content Issue	1
Licensed Content Pages	9
Type of use	Journal/Magazine

Requestor type	Author of this Wiley article
Is the reuse sponsored by or associated with a pharmaceutical or medical products company?	no
Format	Electronic
Portion	Figure/table
Number of figures/tables	2
Original Wiley figure/table number(s)	Figure 3 and Table 2
Will you be translating?	No
Circulation	50000 or greater
Title of new article	Sampling and analysis of animal scent signals
Publication the new article is in	Journal of Visualized Experiments
Publisher of new article	MyJove Corp.
Author of new article	David Walker & Stefano Vaglio
Expected publication date of new article	Jan 2020
Estimated size of new article (pages)	18
Requestor Location	University of Wolverhampton Wulfruna Street Wolverhampton, WV1 1LY

United Kingdom
Attn: University of Wolverhampton

Publisher Tax ID EU826007151

Total 0.00 GBP

Terms and Conditions

TERMS AND CONDITIONS

This copyrighted material is owned by or exclusively licensed to John Wiley & Sons, Inc. or one of its group companies (each a "Wiley Company") or handled on behalf of a society with which a Wiley Company has exclusive publishing rights in relation to a particular work (collectively "WILEY"). By clicking "accept" in connection with completing this licensing transaction, you agree that the following terms and conditions apply to this transaction (along with the billing and payment terms and conditions established by the Copyright Clearance Center Inc., ("CCC's Billing and Payment terms and conditions"), at the time that you opened your RightsLink account (these are available at any time at <http://myaccount.copyright.com>).

Terms and Conditions

- The materials you have requested permission to reproduce or reuse (the "Wiley Materials") are protected by copyright.
- You are hereby granted a personal, non-exclusive, non-sub licensable (on a stand-alone basis), non-transferable, worldwide, limited license to reproduce the Wiley Materials for the purpose specified in the licensing process. This license, **and any CONTENT (PDF or image file) purchased as part of your order**, is for a one-time use only and limited to any maximum distribution number specified in the license. The first instance of republication or reuse granted by this license must be completed within two years of the date of the grant of this license (although copies prepared before the end date may be distributed thereafter). The Wiley Materials shall not be used in any other manner or for any other purpose, beyond what is granted in the license. Permission is granted subject to an appropriate acknowledgement given to the author, title of the material/book/journal and the publisher. You shall also duplicate the copyright notice that appears in the Wiley publication in your use of the Wiley Material. Permission is also granted on the understanding that nowhere in the text is a previously published source acknowledged for all or part of this Wiley Material. Any third party content is expressly excluded from this permission.
- With respect to the Wiley Materials, all rights are reserved. Except as expressly granted by the terms of the license, no part of the Wiley Materials may be copied, modified, adapted (except for minor reformatting required by the new Publication),

translated, reproduced, transferred or distributed, in any form or by any means, and no derivative works may be made based on the Wiley Materials without the prior permission of the respective copyright owner. **For STM Signatory Publishers clearing permission under the terms of the [STM Permissions Guidelines](#) only, the terms of the license are extended to include subsequent editions and for editions in other languages, provided such editions are for the work as a whole in situ and does not involve the separate exploitation of the permitted figures or extracts,** You may not alter, remove or suppress in any manner any copyright, trademark or other notices displayed by the Wiley Materials. You may not license, rent, sell, loan, lease, pledge, offer as security, transfer or assign the Wiley Materials on a stand-alone basis, or any of the rights granted to you hereunder to any other person.

- The Wiley Materials and all of the intellectual property rights therein shall at all times remain the exclusive property of John Wiley & Sons Inc, the Wiley Companies, or their respective licensors, and your interest therein is only that of having possession of and the right to reproduce the Wiley Materials pursuant to Section 2 herein during the continuance of this Agreement. You agree that you own no right, title or interest in or to the Wiley Materials or any of the intellectual property rights therein. You shall have no rights hereunder other than the license as provided for above in Section 2. No right, license or interest to any trademark, trade name, service mark or other branding ("Marks") of WILEY or its licensors is granted hereunder, and you agree that you shall not assert any such right, license or interest with respect thereto
- NEITHER WILEY NOR ITS LICENSORS MAKES ANY WARRANTY OR REPRESENTATION OF ANY KIND TO YOU OR ANY THIRD PARTY, EXPRESS, IMPLIED OR STATUTORY, WITH RESPECT TO THE MATERIALS OR THE ACCURACY OF ANY INFORMATION CONTAINED IN THE MATERIALS, INCLUDING, WITHOUT LIMITATION, ANY IMPLIED WARRANTY OF MERCHANTABILITY, ACCURACY, SATISFACTORY QUALITY, FITNESS FOR A PARTICULAR PURPOSE, USABILITY, INTEGRATION OR NON-INFRINGEMENT AND ALL SUCH WARRANTIES ARE HEREBY EXCLUDED BY WILEY AND ITS LICENSORS AND WAIVED BY YOU.
- WILEY shall have the right to terminate this Agreement immediately upon breach of this Agreement by you.
- You shall indemnify, defend and hold harmless WILEY, its Licensors and their respective directors, officers, agents and employees, from and against any actual or threatened claims, demands, causes of action or proceedings arising from any breach of this Agreement by you.
- IN NO EVENT SHALL WILEY OR ITS LICENSORS BE LIABLE TO YOU OR ANY OTHER PARTY OR ANY OTHER PERSON OR ENTITY FOR ANY SPECIAL, CONSEQUENTIAL, INCIDENTAL, INDIRECT, EXEMPLARY OR PUNITIVE DAMAGES, HOWEVER CAUSED, ARISING OUT OF OR IN CONNECTION WITH THE DOWNLOADING, PROVISIONING, VIEWING OR USE OF THE MATERIALS REGARDLESS OF THE FORM OF ACTION, WHETHER FOR BREACH OF CONTRACT, BREACH OF WARRANTY, TORT, NEGLIGENCE, INFRINGEMENT OR OTHERWISE (INCLUDING, WITHOUT

LIMITATION, DAMAGES BASED ON LOSS OF PROFITS, DATA, FILES, USE, BUSINESS OPPORTUNITY OR CLAIMS OF THIRD PARTIES), AND WHETHER OR NOT THE PARTY HAS BEEN ADVISED OF THE POSSIBILITY OF SUCH DAMAGES. THIS LIMITATION SHALL APPLY NOTWITHSTANDING ANY FAILURE OF ESSENTIAL PURPOSE OF ANY LIMITED REMEDY PROVIDED HEREIN.

- Should any provision of this Agreement be held by a court of competent jurisdiction to be illegal, invalid, or unenforceable, that provision shall be deemed amended to achieve as nearly as possible the same economic effect as the original provision, and the legality, validity and enforceability of the remaining provisions of this Agreement shall not be affected or impaired thereby.
- The failure of either party to enforce any term or condition of this Agreement shall not constitute a waiver of either party's right to enforce each and every term and condition of this Agreement. No breach under this agreement shall be deemed waived or excused by either party unless such waiver or consent is in writing signed by the party granting such waiver or consent. The waiver by or consent of a party to a breach of any provision of this Agreement shall not operate or be construed as a waiver of or consent to any other or subsequent breach by such other party.
- This Agreement may not be assigned (including by operation of law or otherwise) by you without WILEY's prior written consent.
- Any fee required for this permission shall be non-refundable after thirty (30) days from receipt by the CCC.
- These terms and conditions together with CCC's Billing and Payment terms and conditions (which are incorporated herein) form the entire agreement between you and WILEY concerning this licensing transaction and (in the absence of fraud) supersedes all prior agreements and representations of the parties, oral or written. This Agreement may not be amended except in writing signed by both parties. This Agreement shall be binding upon and inure to the benefit of the parties' successors, legal representatives, and authorized assigns.
- In the event of any conflict between your obligations established by these terms and conditions and those established by CCC's Billing and Payment terms and conditions, these terms and conditions shall prevail.
- WILEY expressly reserves all rights not specifically granted in the combination of (i) the license details provided by you and accepted in the course of this licensing transaction, (ii) these terms and conditions and (iii) CCC's Billing and Payment terms and conditions.
- This Agreement will be void if the Type of Use, Format, Circulation, or Requestor Type was misrepresented during the licensing process.
- This Agreement shall be governed by and construed in accordance with the laws of the State of New York, USA, without regards to such state's conflict of law rules. Any

legal action, suit or proceeding arising out of or relating to these Terms and Conditions or the breach thereof shall be instituted in a court of competent jurisdiction in New York County in the State of New York in the United States of America and each party hereby consents and submits to the personal jurisdiction of such court, waives any objection to venue in such court and consents to service of process by registered or certified mail, return receipt requested, at the last known address of such party.

WILEY OPEN ACCESS TERMS AND CONDITIONS

Wiley Publishes Open Access Articles in fully Open Access Journals and in Subscription journals offering Online Open. Although most of the fully Open Access journals publish open access articles under the terms of the Creative Commons Attribution (CC BY) License only, the subscription journals and a few of the Open Access Journals offer a choice of Creative Commons Licenses. The license type is clearly identified on the article.

The Creative Commons Attribution License

The [Creative Commons Attribution License \(CC-BY\)](#) allows users to copy, distribute and transmit an article, adapt the article and make commercial use of the article. The CC-BY license permits commercial and non-

Creative Commons Attribution Non-Commercial License

The [Creative Commons Attribution Non-Commercial \(CC-BY-NC\)License](#) permits use, distribution and reproduction in any medium, provided the original work is properly cited and is not used for commercial purposes.(see below)

Creative Commons Attribution-Non-Commercial-NoDerivs License

The [Creative Commons Attribution Non-Commercial-NoDerivs License](#) (CC-BY-NC-ND) permits use, distribution and reproduction in any medium, provided the original work is properly cited, is not used for commercial purposes and no modifications or adaptations are made. (see below)

Use by commercial "for-profit" organizations

Use of Wiley Open Access articles for commercial, promotional, or marketing purposes requires further explicit permission from Wiley and will be subject to a fee.

Further details can be found on Wiley Online Library
<http://olabout.wiley.com/WileyCDA/Section/id-410895.html>

Other Terms and Conditions:

Questions? customercare@copyright.com or +1-855-239-3415 (toll free in the US) or +1-978-646-2777.
