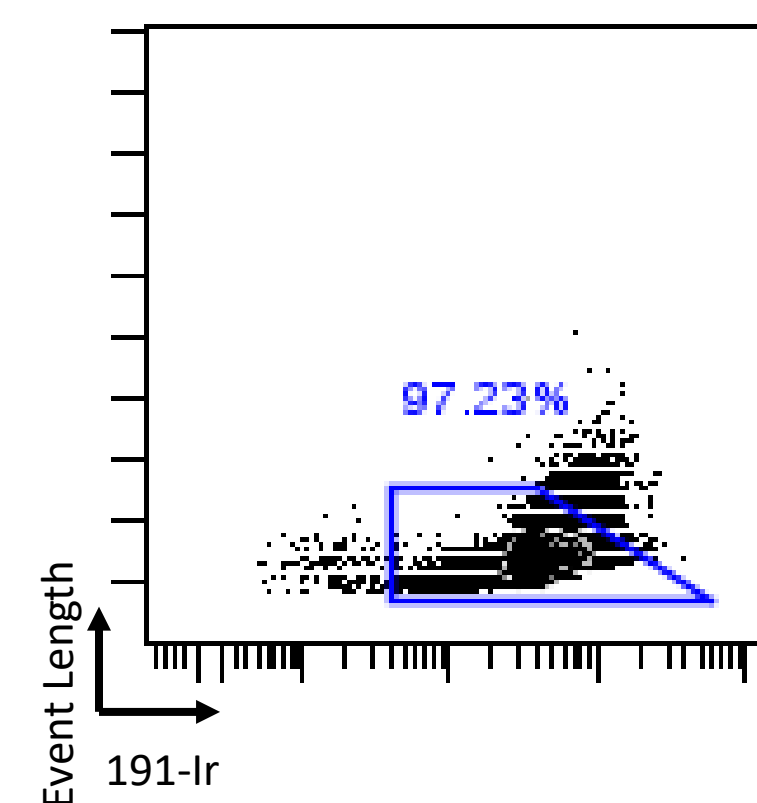
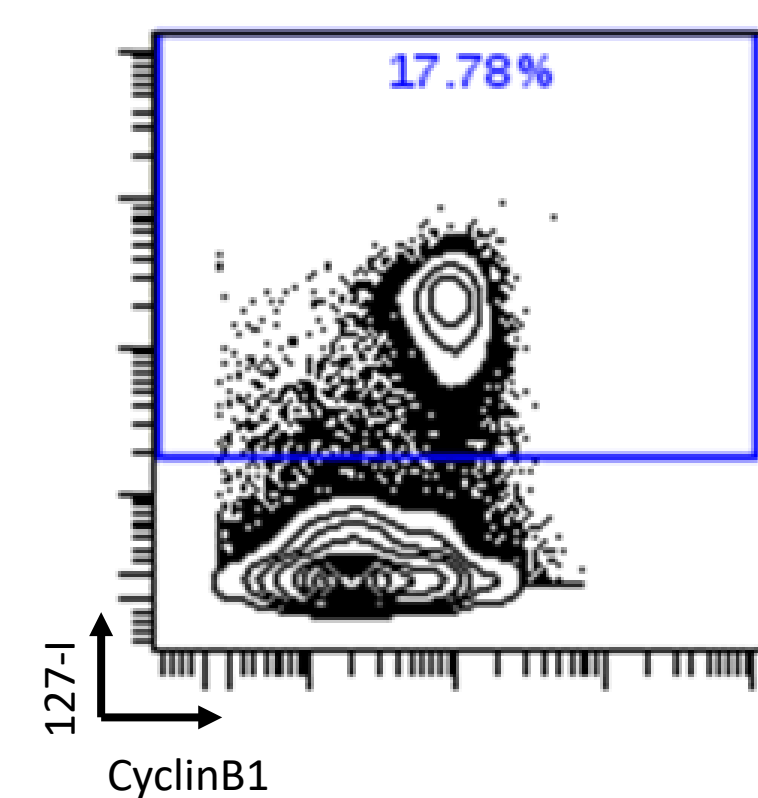


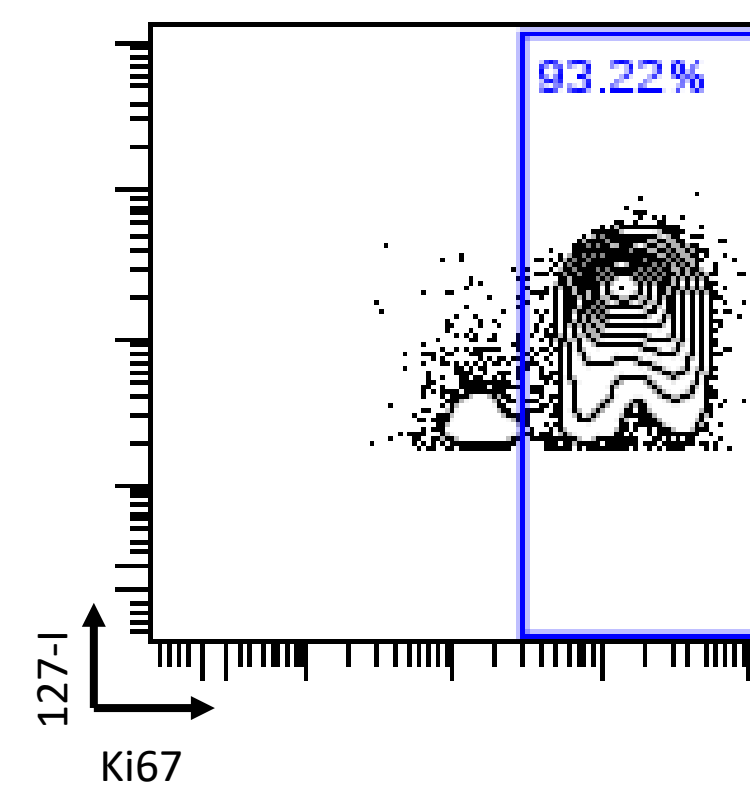
Singlet gate removes debris and doublets and used for all further gates



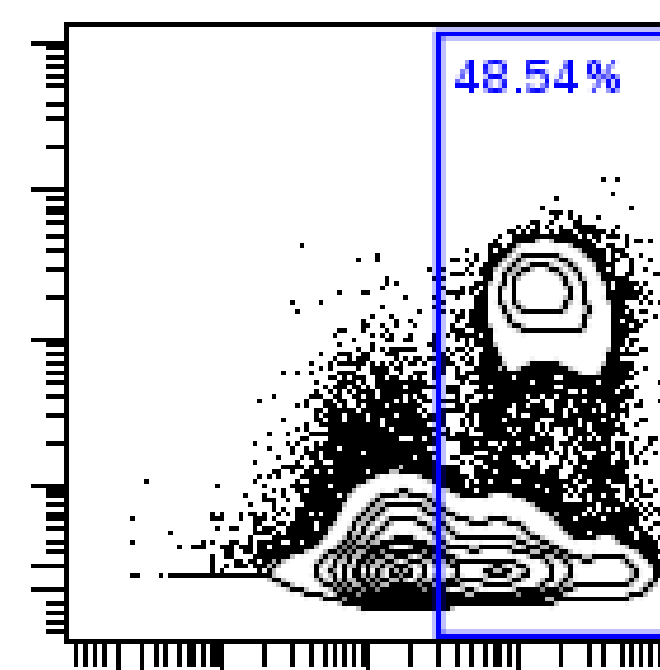
a.)



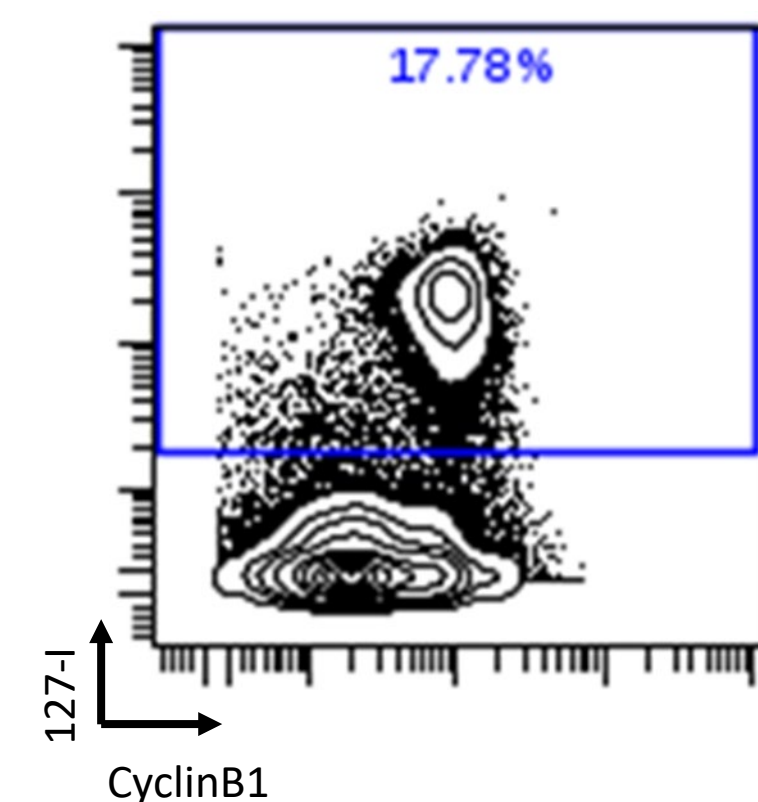
Establishing Ki67⁺ gate on the S-phase population



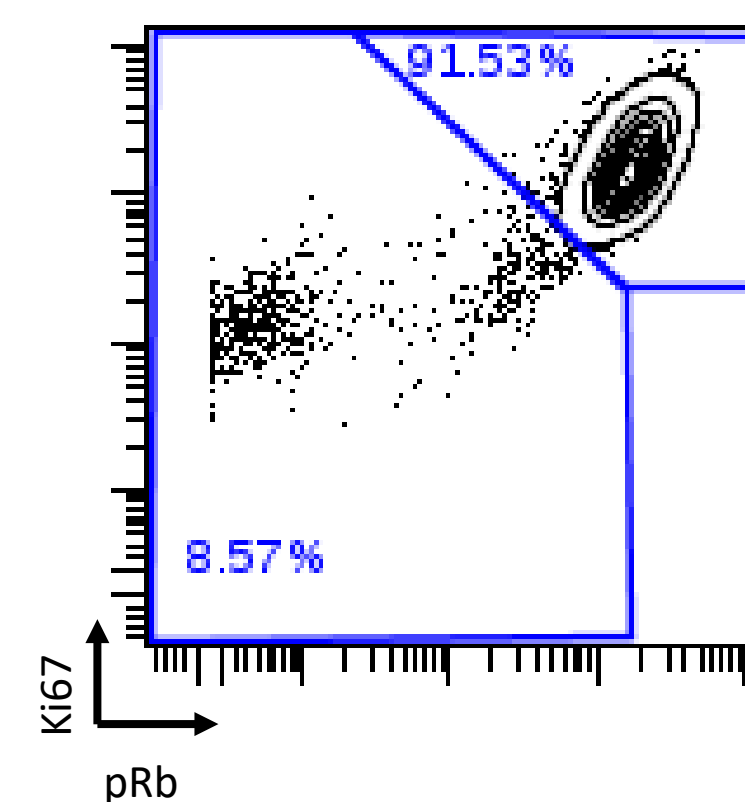
The boundary of the gate is the Ki67⁺ population. The remaining population is the G0 population.



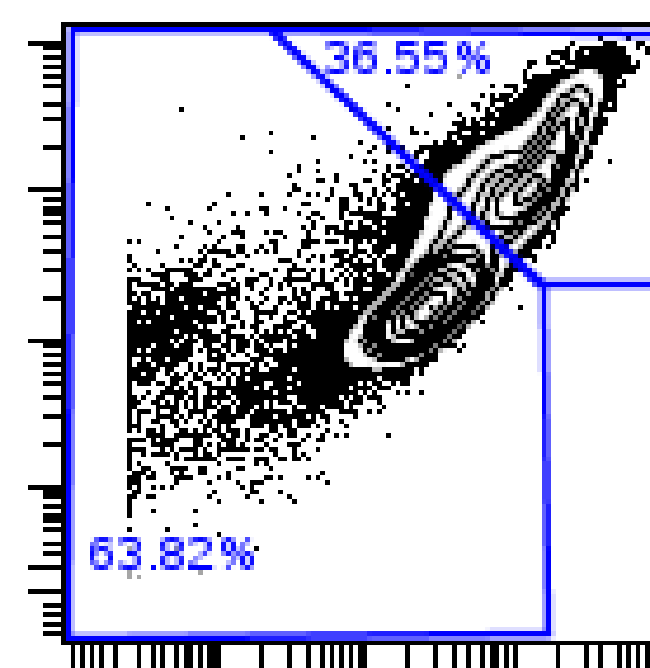
b.)



The S-phase population is double positive for Ki67 and pRb.

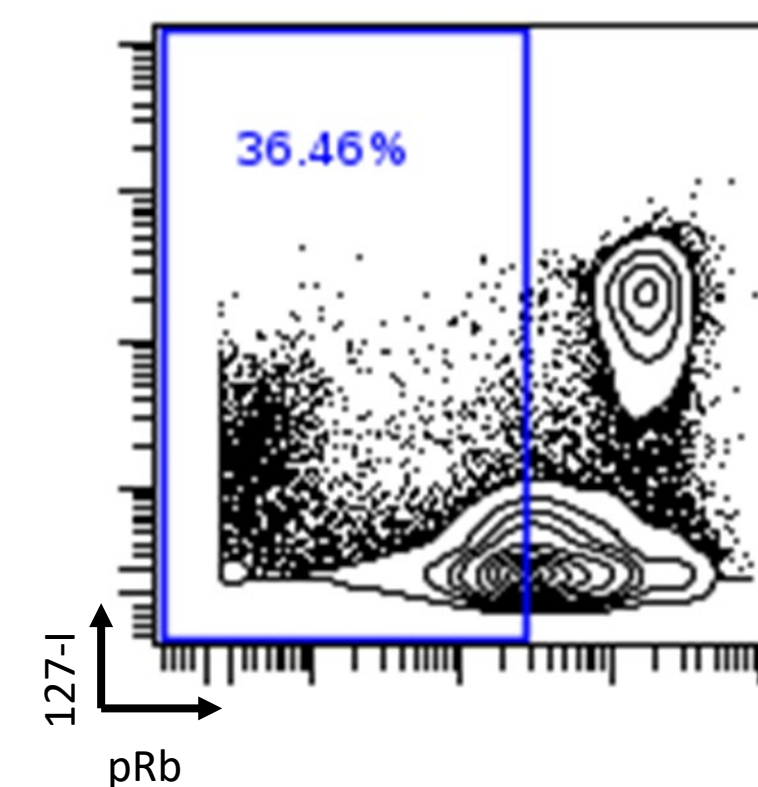


Two populations are evident in Ki67 and pRb which can be used to demonstrate cycling and not-cycling if IdU is not available



Cycling population

Not cycling population



The G0-phase population shows lower expression for Ki67 and pRb.

