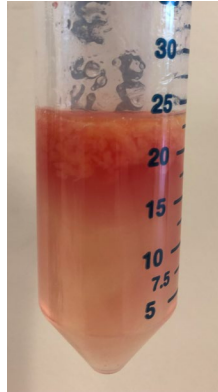
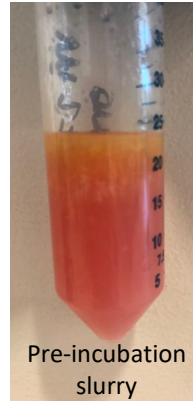




Place VAT in collagenase solution



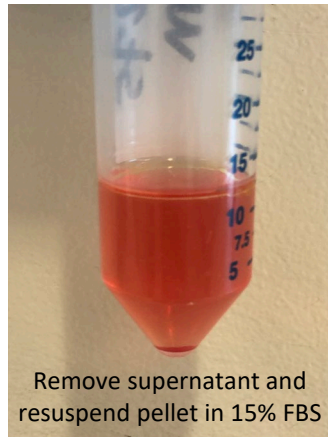
Mince tissue with sterile scissors



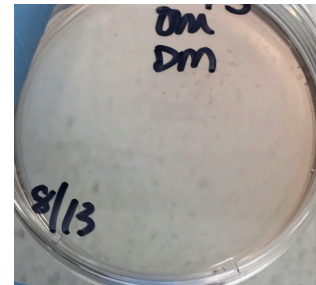
Incubate 37°C, 60 min, 130 rpm.



Remove lipid layer and aqueous supernatant, resuspend cell pellet in RBC Lysing Solution, incubate, then centrifuge 270 rcf, 10 min



Transfer cell suspension to 100mm petri dish



Passage plastic-adhered cells 4 rounds to isolate/expand preadipocytes

Expanded preadipocytes

