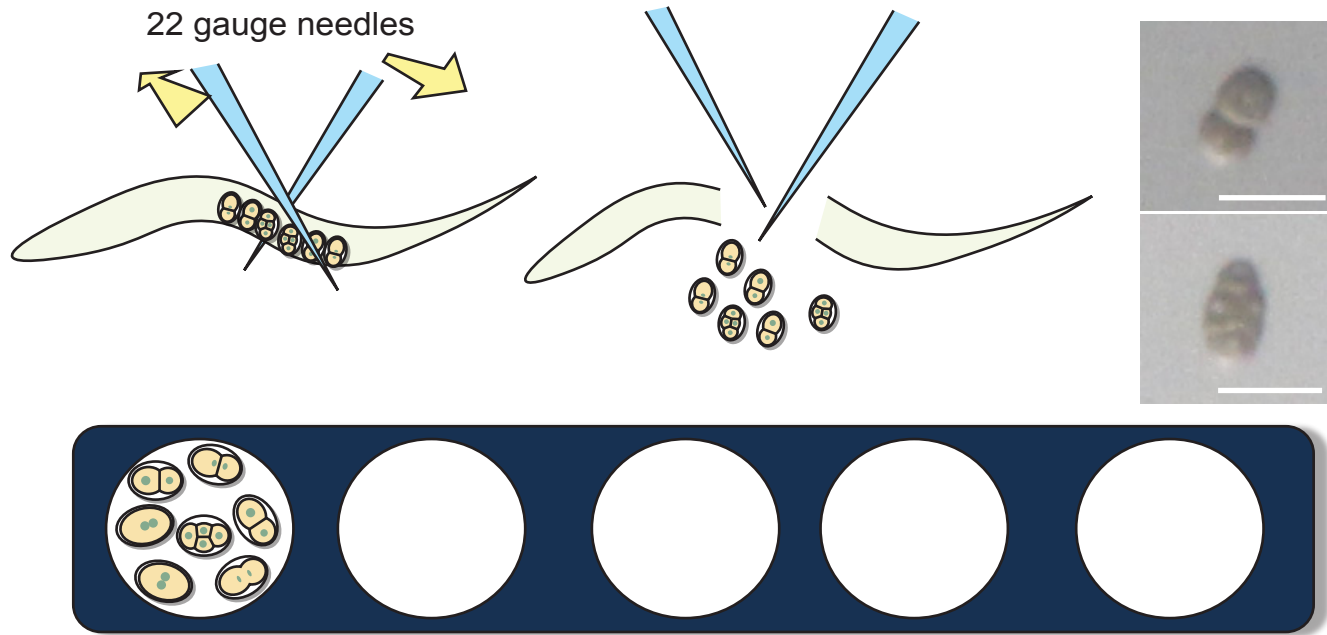
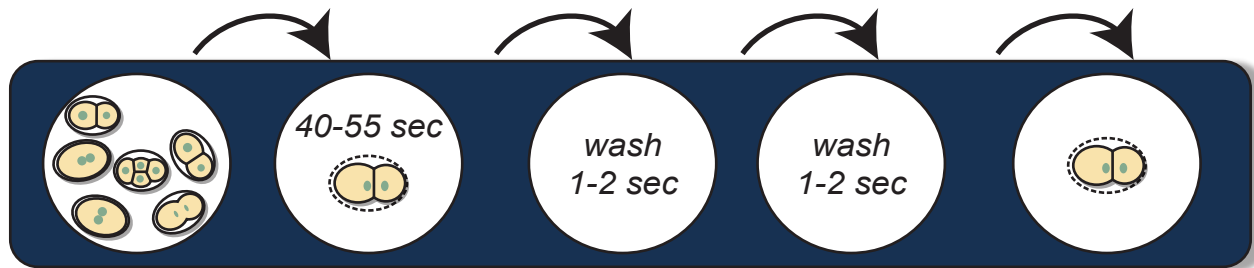


# Figure 4

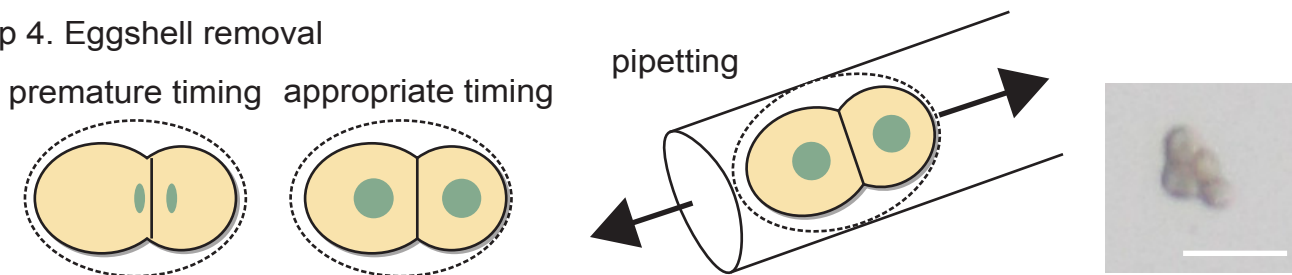
**A** Step 1. Dissect *C. elegans* adults to obtain embryos (egg salt buffer)



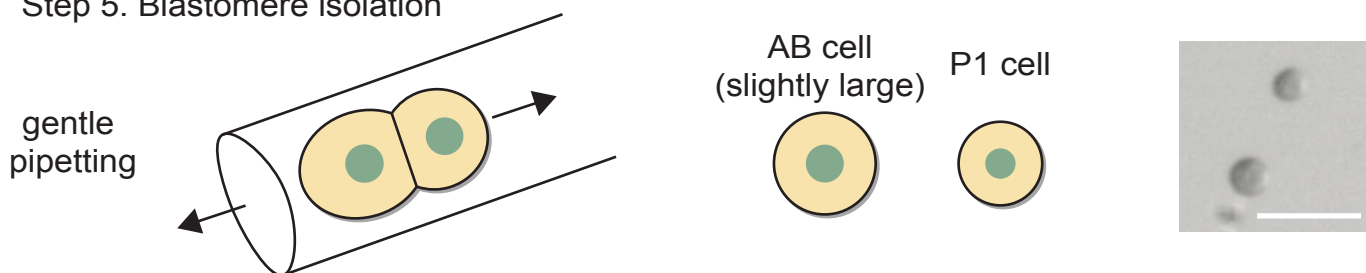
**B** Step 2-3. Hypochlorite treatment (hypochlorite solution) and wash (Shelton's growth medium)



**C** Step 4. Eggshell removal



**D** Step 5. Blastomere isolation



## Figure 4. Blastomere isolation work flow

(A) Dissection of adult *C. elegans* in egg salt buffer to obtain embryos. Photographs show 2-cell and 4-cell stage embryos before eggshell removal. (B) Hypochlorite treatment and washing. (C) Schematics depict the appropriate timing for eggshell removal. Photograph shows a 4-cell stage embryo after eggshell removal. (Step 5.) Blastomere separation. Photograph shows a separated 2-cell stage embryo. Sizes of the arrows in C and D indicate the relative forces required during pipetting. Scale bars show 50 μm.