

Traction microscopy integrated with microfluidics for chemotactic collective migration

Hwanseok Jang¹, Jongseong Kim¹, Jennifer H. Shin², Jeffrey J. Fredberg³, Chan Young Park^{3*}, and Yongdoo Park^{1*}

¹Department of Biomedical Sciences, Korea University, Seoul, Republic of Korea

²Department of Mechanical Engineering, Korea Advanced Institute of Science and Technology, Daejeon, Republic of Korea.

³Department of Environmental Health, Harvard T.H. Chan School of Public Health, Boston, MA, USA

*To whom correspondence should be addressed:

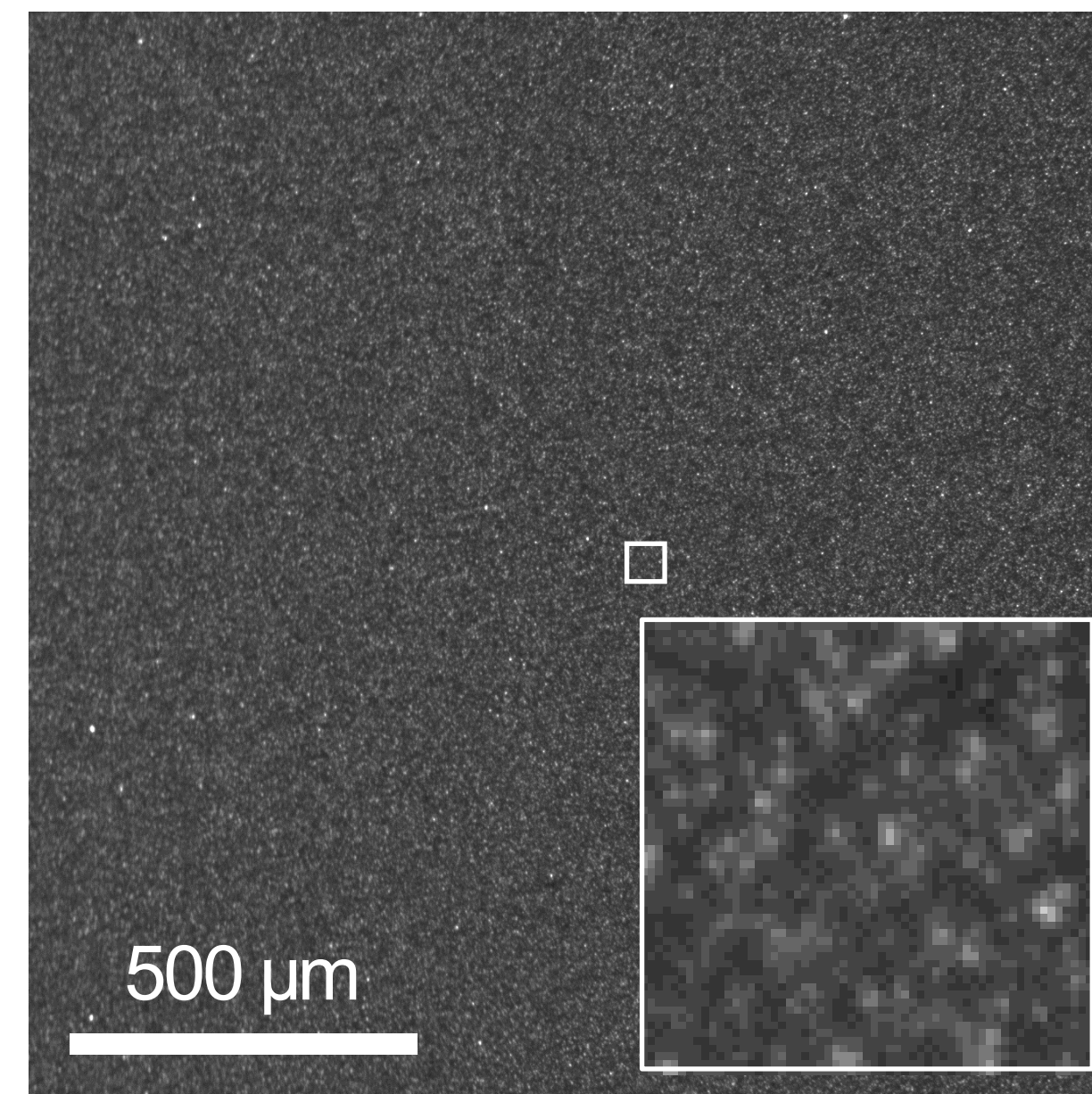
cypark@hsph.harvard.edu and ydpark67@korea.ac.kr

SUPPORTING INFORMATION

Figure S1. Proper bead distribution is required for data of sufficient quality for traction force analysis as an example for good (left) and bad (right) fluorescent bead images with enlarged images in the white boxes.

Fluorescent bead image

Good quality



Bad quality

