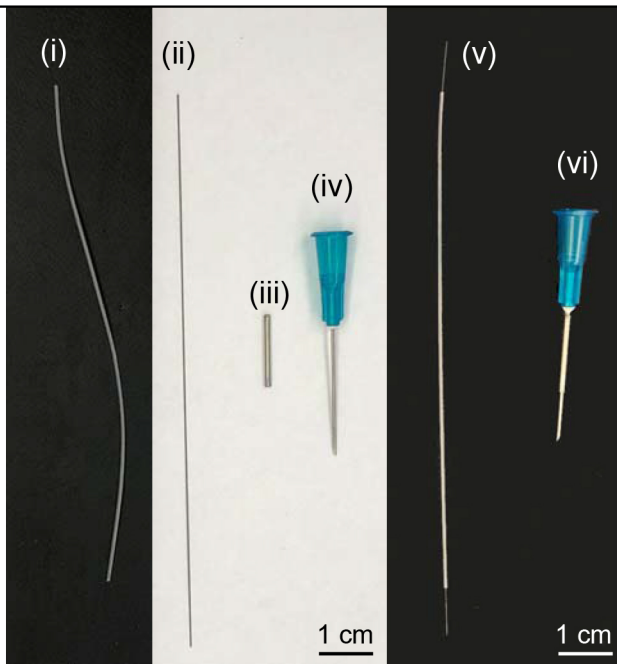
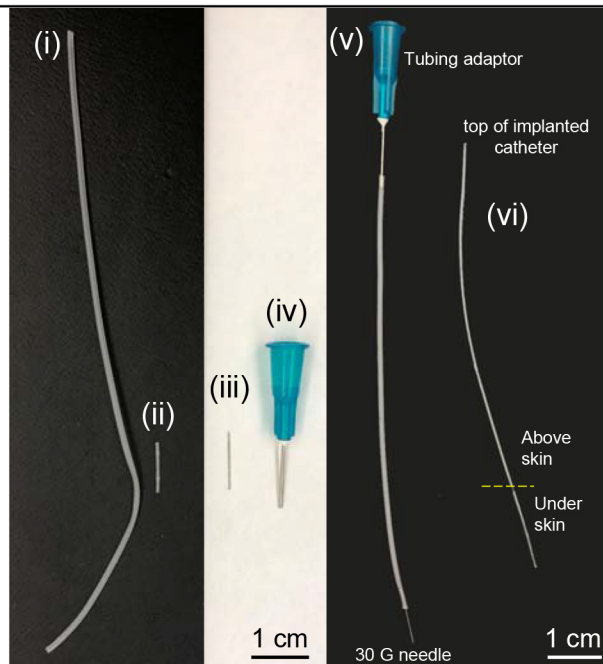


A



- (i) PE10 catheter
- (ii) stylet wire
- (iii) guide cannula made from 19G needle
- (iv) 23G needle
- (v) catheter/wire assembly
- (vi) cannula/needle assembly

B



- (i) PE50 catheter
- (ii) adapter made from PE10 catheter
- (iii) 30G needle (cut to 1 cm in length)
- (iv) Tubing adaptor
- (v) delivery catheter assembly
- (vi) implanted catheter