

# Journal of Visualized Experiments

## Evaluating the Differentiation Capacity of Mouse Prostate Epithelial Cells Using Organoid Culture

--Manuscript Draft--

<b>Article Type:</b>	Methods Article - JoVE Produced Video
<b>Manuscript Number:</b>	JoVE60223R3
<b>Full Title:</b>	Evaluating the Differentiation Capacity of Mouse Prostate Epithelial Cells Using Organoid Culture
<b>Keywords:</b>	Organoid, prostate, epithelium, progenitor, basal, luminal, differentiation, mouse
<b>Corresponding Author:</b>	Andrew Goldstein UNITED STATES
<b>Corresponding Author's Institution:</b>	
<b>Corresponding Author E-Mail:</b>	agoldstein@mednet.ucla.edu
<b>Order of Authors:</b>	Preston D Crowell Jenna M. Giafaglione Takao Hashimoto Johnny A. Diaz Andrew S Goldstein
<b>Additional Information:</b>	
<b>Question</b>	<b>Response</b>
Please indicate whether this article will be Standard Access or Open Access.	Open Access (US\$4,200)
Please indicate the <b>city, state/province, and country</b> where this article will be <b>filmed</b> . Please do not use abbreviations.	Los Angeles, CA, USA

**TITLE**

Evaluating the Differentiation Capacity of Mouse Prostate Epithelial Cells Using Organoid Culture

**AUTHORS AND AFFILIATIONS**

Preston D. Crowell<sup>1\*</sup>, Jenna M. Giafaglione<sup>1\*</sup>, Takao Hashimoto<sup>2</sup>, Johnny A. Diaz<sup>2</sup>, Andrew S. Goldstein<sup>2-6</sup>

<sup>1</sup>Molecular Biology Interdepartmental Program, University of California, Los Angeles, Los Angeles, CA, USA

<sup>2</sup>Department of Molecular, Cell, and Developmental Biology, University of California, Los Angeles, Los Angeles, CA, USA

<sup>3</sup>Department of Urology, David Geffen School of Medicine, University of California, Los Angeles, Los Angeles, CA, USA

<sup>4</sup>Eli and Edythe Broad Center of Regenerative Medicine and Stem Cell Research, University of California, Los Angeles, Los Angeles, CA, USA

<sup>5</sup>Jonsson Comprehensive Cancer Center, University of California, Los Angeles, Los Angeles, CA, USA

<sup>6</sup>Molecular Biology Institute, University of California, Los Angeles, Los Angeles, CA, USA

\*These authors contributed equally

**Corresponding author:**

Andrew Goldstein

Email: [agoldstein@mednet.ucla.edu](mailto:agoldstein@mednet.ucla.edu)

**KEYWORDS**

organoid, prostate, epithelium, progenitor, basal, luminal, differentiation, mouse

**SHORT ABSTRACT**

Mouse prostate organoids represent a promising context to evaluate mechanisms that regulate differentiation. This paper describes an improved approach to establish prostate organoids, and introduces methods to (1) collect protein lysate from organoids, and (2) fix and stain organoids for whole-mount confocal microscopy.

**LONG ABSTRACT**

The prostate epithelium is comprised predominantly of basal and luminal cells. In vivo lineage tracing has been utilized to define the differentiation capacity of mouse prostate basal and luminal cells during development, tissue-regeneration and transformation. However, evaluating cell-intrinsic and extrinsic regulators of prostate epithelial differentiation capacity using a lineage tracing approach often requires extensive breeding and can be cost-prohibitive. In the prostate organoid assay, basal and luminal cells generate prostatic epithelium ex vivo. Importantly, primary epithelial cells can be isolated from mice of any genetic background or mice treated with any number of small molecules prior to, or after, plating into three-dimensional (3D) culture. Sufficient material for evaluation of differentiation capacity is generated after 7-10 days. Collection of basal-derived and luminal-derived organoids for (1) protein analysis by Western blot and (2) immunohistochemical analysis of intact organoids by whole-mount confocal microscopy

enables researchers to evaluate the ex vivo differentiation capacity of prostate epithelial cells. When used in combination, these two approaches provide complementary information about the differentiation capacity of prostate basal and luminal cells in response to genetic or pharmacological manipulation.

## INTRODUCTION

Basal and luminal cells comprise the majority of the prostate epithelium<sup>1</sup>. Lineage tracing studies have revealed that these cell types are predominantly self-sustained by distinct progenitors in the adult mouse<sup>2</sup>; however, luminal differentiation from basal progenitors has been observed in several contexts including development<sup>3,4</sup>, tissue regeneration<sup>5</sup>, inflammation<sup>6,7</sup> and prostate cancer initiation<sup>2,8</sup>. Furthermore, emerging data supports the existence of multipotent luminal progenitors as well as luminal-committed progenitors<sup>9</sup>. In metastatic prostate cancer, differentiation from an AR-dependent luminal lineage to an AR-indifferent lineage with basal and neuroendocrine features represents an increasingly appreciated mechanism of resistance to androgen pathway inhibitors<sup>10–12</sup>. Therefore, as differentiation is implicated in normal physiology, cancer initiation and resistance to therapy, elucidating key molecular regulators of prostate epithelial cell differentiation is critical.

The mouse prostate organoid model has emerged as an elegant ex vivo context to study prostate epithelial cell differentiation<sup>9,13,14</sup>. In this assay, individual epithelial cells are plated into a 3D matrix where they generate glandular structures containing both basal and luminal cells within 1 week. While existing approaches for plating cells into organoid culture can be used to efficiently generate organoids, these approaches require further optimization<sup>14</sup>. Notable challenges associated with culturing prostate organoids include (1) excluding two-dimensional (2D) colonies that form beneath the Matrigel (matrix gel) from analysis, (2) maintaining the integrity of the matrix gel during media changes, and (3) counting organoids accurately. This paper outlines an approach to generate organoids from epithelial cells isolated from mouse prostate. The approach described entails coating plates with poly(2-hydroxyethyl methacrylate) (Poly-HEMA) to prevent the occurrence of 2D colonies. Furthermore, cells are plated into a matrix gel ring, rather than a matrix gel disc, which makes changing the media and counting organoids less challenging. These techniques allow researchers to more easily investigate how genetic alterations or small molecules introduced prior to, or during, organoid formation alter key processes such as differentiation.

Harvesting of prostate organoids for Western blot or immunohistochemical analysis by whole-mount confocal microscopy can provide valuable mechanistic insight into differentiation<sup>13</sup>, yet well-established protocols to prepare organoids for such techniques are lacking. This manuscript describes approaches to harvest organoids for (1) collection of protein lysate, or (2) fixation and staining for confocal microscopy. Importantly, the approach described for fixing and staining prostate organoids is considerably improved in relation to existing methods. While these rely on sectioning organoids<sup>15</sup>, the method described in this manuscript utilizes intact organoids, which helps protect against organoid damage during sample preparation. When used in combination, Western blot and confocal microscopy can provide valuable insight into the molecular regulators

of differentiation. Alternatively, these approaches can be used to model other processes such as development and transformation.

## **PROTOCOL**

All methods described here have been approved by the Institutional Review Board at the University of California, Los Angeles.

NOTE: A schematic illustrating the approaches described in the paper is provided in **Figure 1**.

### **1. Isolating mouse basal and luminal prostate epithelial cells using Fluorescence-Activated Cell Sorting (FACS) TIMING: 30 min**

NOTE: Perform steps 1.3-1.5 in the dark.

1.1. After dissociating cells from total mouse prostate as described in Lawson et al.<sup>16</sup>, transfer the cells to FACS tubes and resuspend  $0.1-5 \times 10^6$  cells in 100  $\mu$ L of dissociation media (**Table 1**).

1.2. Add the appropriate volume of the following directly-conjugated primary antibodies: CD45, CD31, Ter-119, EpCAM and CD49f.

1.3. Incubate on ice, protected from light, for 20 min.

NOTE: It is recommended to utilize 10% of the total dissociated cells for unstained and single-stained controls. These controls are necessary to set the correct compensation and voltage for sorting.

1.4. Quench antibody cocktail by adding 1 mL of dissociation media to each sample. Pellet the cells by centrifugation at  $800 \times g$  for 5 min at (room temperature) RT and remove the supernatant by aspirating.

1.5. Resuspend the cells in appropriate volume (250  $\mu$ L per  $1 \times 10^6$  cells) of dissociation media containing 1  $\mu$ g/mL 4',6-diamidino-2-phenylindole (DAPI). Proceed to FACS. Flow cytometry plots demonstrating isolation of mouse basal and luminal prostate epithelial cells are illustrated in **Figure 2**.

### **2. Plating sorted prostate epithelial cells into primary mouse organoid culture - TIMING: 2-3 h (excluding Poly-HEMA-coated plate preparation)**

NOTE: Plates are coated with Poly-HEMA to prevent 2D colony formation on the surface of the well beneath the matrix gel. Prepare Poly-HEMA-coated plates 1 day prior to plating sorted basal or luminal prostate epithelial cells into mouse organoid culture. Thaw 1 mL aliquots of reduced growth factor matrix gel, hereafter referred to as matrix gel, on ice 2 h prior to step 2.1. Y-27632 (ROCK inhibitor) should be added to mouse organoid media immediately prior to step 2.1. Perform steps 2.1-2.8 on ice.



2.1. Pellet the cells in 5 mL round-bottom tubes by centrifugation at 800 x *g* for 5 min at 4 °C and aspirate the supernatant.

2.2. Wash the cell pellet in 500 µL of mouse organoid media (**Table 2**)<sup>14</sup>.

2.3. Pellet the cells by centrifugation at 800 x *g* for 5 min at 4 °C and aspirate the supernatant.

2.4. Resuspend in mouse organoid media at a cell density of 1000 cells/µL.

2.5. To prepare master mixes, mix epithelial cells suspended in mouse organoid media with matrix gel to generate a final mixture that contains 25% cells/media and 75% matrix gel. Basal cells are typically plated at a concentration of 100-2,000 cells/80 µL, whereas luminal cells are typically plated at a concentration of 2,000-10,000 cells/80 µL. The density of cells plated varies depending upon the day of anticipated material collection, and the desired downstream application.

NOTE: Chill appropriately sized tube(s) for expected master mix volume 5 min prior to master mix preparation. To ensure the matrix gel does not harden while handling, it is critical to chill the pipette tip by pipetting the matrix gel 3-4 times prior to transferring it to a new tube.

2.6. Add 80 µL of the matrix gel/cell mixture per well of a 24-well plate. Pipetting a droplet onto the lower half of the wall of the well, while avoiding direct contact with the Poly-HEMA coating is recommended. After adding the matrix gel, swirl the plate to allow the matrix gel/cell mixture to form a ring around the rim of the well.

2.7. Place the 24-well plate into a 37 °C 5% CO<sub>2</sub> incubator right-side up for 10 min to allow the matrix gel to partially harden.

NOTE: Begin warming mouse organoid media at 37 °C immediately after placing the 24-well plate in the incubator.

2.8. After incubating for 10 min, flip the 24-well plate upside-down and incubate for an additional 50 min to allow the matrix gel to completely harden.

2.9. Add 350 µL of pre-warmed mouse organoid media dropwise to the center of each well.

NOTE: To maintain the integrity of the matrix gel, it is critical to avoid the matrix gel ring while adding media.

2.10. After adding the media, return the 24-well plate to the 37 °C 5% CO<sub>2</sub> incubator.

**3. Replenishing mouse organoid media - TIMING: 10-15 min per 24-well plate**

NOTE: Existing media should be replaced with fresh media every 48 h. Before each media change, pre-warm mouse organoid media. It is not necessary to add ROCK inhibitor to the media used for replenishing.

3.1. Tilt the 24-well plate at a 45° angle and gently remove existing media from the center of each well using a p1000 pipette, while avoiding the matrix gel ring.

3.2. Add 350 µL of pre-warmed mouse organoid media as in step 2.8. It is recommended to add a larger volume of media (up to 1 mL) to organoids cultured for longer than 5 days in order to prevent rapid depletion of key nutrients and growth factors.

#### **4. Extracting protein lysate from prostate organoids for Western blot analysis - TIMING: 2.5-4 h**

NOTE: Prior to collecting organoids for protein lysate extraction, prepare and pre-warm dispase-containing media (**Table 1**).

4.1. Remove the media from each well as in step 3.1.

4.2. To collect organoids, repeatedly blast the matrix gel by pipetting 1 mL of dispase-containing media directly onto the matrix gel ring until the entire ring is dislodged, and transfer to a 1.5 mL microcentrifuge tube.

NOTE: It is critical to avoid direct contact with the Poly-HEMA-coated wells. Direct contact may cause contamination of the collected material with Poly-HEMA, which could negatively impact cell survival.

4.3. Place the 1.5 mL microcentrifuge tube(s) into a 37 °C 5% CO<sub>2</sub> incubator for 30 min to 1 h to allow complete digestion of the matrix gel by dispase.

4.4. Pellet organoids by centrifugation at 800 x *g* for 5 min at RT and remove the supernatant using a micropipette.

4.5. Add phosphate-buffered saline (PBS) to the organoid pellet and resuspend by gently flicking.

NOTE: Failure to sufficiently resuspend the organoid pellet may result in the contamination of organoid material with residual dispase or matrix gel.

4.6. Pellet the organoids by centrifugation at 800 x *g* for 5 min at RT and remove the supernatant using a micropipette.

4.7. Fast freeze the organoid pellets by placing each tube into a solution containing dry ice and methanol. Store the tube(s) until future use at -80 °C. Alternatively, extract protein lysate immediately following step 4.6.

4.8. Resuspend the organoid pellets in 100 µL of protein lysis buffer (**Table 1**) per 10 µL of packed cell volume. Flick to resuspend.

NOTE: If resuming after fast-freezing, ensure protein lysis buffer is thawed prior to removing samples from -80 °C, as lysis buffer must be added to samples immediately in order to prevent phosphatase and protease activity.

4.9. Incubate the samples in protein lysis buffer on ice for at least 45 min.

NOTE: It is recommended to sonicate prior to incubation on ice to increase the efficiency of nuclear protein recovery; however, sonication is not required. If sonication is not performed, proceed to step 4.10.

4.9.1. To sonicate, submerge tubes in wet ice and gently apply the tip of the sonic dismembrator to the outside of the microcentrifuge tube. Sonicate for 40 s at 20 kHz.

4.10. Proceed to Western blot following established protocols.

## **5. Fixing and staining prostate organoids for immunohistochemical analysis by whole-mount confocal microscopy**

### **5.1. Collecting prostate organoids from 24-well plates - TIMING: 45 min-1 h**

NOTE: When collecting prostate organoids to process for confocal microscopy, it is critical to handle them with care in order to maintain their structure. The collection protocol below is designed to reduce disruption of organoid structure during isolation.

5.1.1. Remove the media from each well as in step 3.1.

5.1.2. Digest the matrix gel by incubating with 500 µL of dispase-containing media (**Table 1**) for 30 min in a 37 °C 5% CO<sub>2</sub> incubator.

5.1.3. Collect digested organoid suspension in a microcentrifuge tube and pellet the organoids by centrifugation at 800 x g for 3 min at RT. Remove the supernatant.

### **5.2. Whole-mount immunofluorescent staining of prostate organoids - TIMING: 3-4 days (1-5 h(s)/day)**

5.2.1. Add 500 µL of 4% paraformaldehyde in PBS and incubate for 2 h at RT with gentle shaking.

5.2.2. Pellet the organoids by centrifugation at 800 x *g* for 3 min at RT, remove the supernatant, and wash the pellet with 1 mL of PBS for 15 min with gentle shaking.

5.2.3. Wash the pellet as in step 5.2.2 for additional two times.

5.2.4. Pellet the organoids by centrifugation at 800 x *g* for 3 min at RT and remove the supernatant. Add 1 µg/mL DAPI in blocking solution (Table 1). Incubate for 2 h at RT or alternatively overnight at 4 °C with gentle shaking.

5.2.5. Pellet the organoids by centrifugation at 800 x *g* for 3 min at RT and remove the supernatant. Add primary antibody (rabbit-anti-p63, mouse-anti-cytokeratin 8) in blocking solution and incubate overnight at 4 °C with gentle shaking.

5.2.6. Pellet the organoids by centrifugation at 800 x *g* for 3 min at RT and remove the supernatant. Wash the pellet with 1 mL of PBS for 15 min with gentle shaking.

5.2.7. Wash the pellet as in step 5.2.6 for additional two times.

5.2.8. Pellet the organoids by centrifugation at 800 x *g* for 3 min at RT and remove the supernatant. Add secondary antibody (Goat anti-rabbit IgG-Alexa Fluor 594, Goat anti-mouse IgG-Alexa Fluor 488) in blocking solution and incubate overnight at 4 °C with gentle shaking.

5.2.9. Pellet the organoids by centrifugation at 800 x *g* for 3 min at RT, remove the supernatant, and wash the pellet with 1 mL of PBS for 15 min with gentle shaking.

5.2.10. Wash the pellet as in step 5.2.9 for additional two times.

## **6. Tissue clearing and mounting of the stained prostate organoids for whole-mount confocal microscopy - TIMING: 7 h**

6.1.1. Pellet the organoids by centrifugation at 800 x *g* for 3 min at RT and remove the supernatant.

6.1.2. Add 1 mL of 30% sucrose in PBS with 1% Triton X-100 and incubate for 2 h at RT with gentle shaking.

6.1.3. Pellet the organoids by centrifugation at 800 x *g* for 3 min at RT and remove the supernatant.

6.1.4. Add 1 mL of 45% sucrose in PBS with 1% Triton X-100 and incubate for 2 h at RT with gentle shaking.

6.1.5. Pellet the organoids by centrifugation at 800 x *g* for 3 min at RT and remove the supernatant.

6.1.6. Add 1 mL of 60% sucrose in PBS with 1% Triton X-100 and incubate for 2 h at RT with gentle shaking.

6.1.7. Pellet the organoids by centrifugation at 800 x *g* for 3 min at RT and remove 95% of the supernatant.

NOTE: The pellet becomes looser as the concentration of sucrose becomes higher. Observing the DAPI-stained organoids under the UV light to confirm that they were not lost during removal of the supernatant is recommended.

6.1.8. Transfer a 10-20  $\mu$ L droplet of the remaining suspension to a chambered coverslip and proceed to confocal microscopy.

NOTE: Coverslip fragments can be placed on either side of the droplet to be used as spacers. These prevent organoids from collapsing when a coverslip is placed over the droplet.

## REPRESENTATIVE RESULTS

Prostate epithelial cells are plated into mouse organoid culture where they form organoids, which are harvested prior to preparation for downstream analysis (**Figure 1**).

Basal and luminal epithelial cells are isolated using FACS. After excluding DAPI+ cells and depleting Lin+ cells (CD45, CD31, Ter119), basal and luminal cells are distinguished based on differential expression of EpCAM and CD49f (**Figure 2**). The approach described to plate prostate basal and luminal cells into organoid culture entails: (1) plating cells into matrix gel rings, and (2) coating wells with Poly-HEMA. Plating into rings has been previously described in Agarwal et al<sup>9</sup>. Utilizing this approach (**Figure 3A**) allows researchers to more easily avoid the matrix gel while replenishing the media (Step 3), and more easily count organoids by following the circumference of the well. Coating wells with Poly-HEMA has been shown to prevent 2D colony formation in retinal organoids<sup>17</sup>; however, this approach has not been utilized in the prostate organoid model. Importantly, coating wells with Poly-HEMA (**Table 3**) eliminates the occurrence of 2D colonies without interfering with organoid formation (**Figure 3B**). These modifications expand the capabilities of the prostate organoid assay.

Basal and luminal cells form organoids with distinct morphologies (**Figure 4A**). While most basal-derived organoids are similar in size (100-300  $\mu$ m diameter) after 7 days in culture, luminal-derived organoids exhibit significant heterogeneity (30-450  $\mu$ m diameter). Furthermore, most basal-derived organoids contain lumens surrounded by multi-layered epithelium (**Figure 4A, top**), whereas luminal-derived organoids range in morphology from hollow, with single-layered epithelium to solid, with multi-layered cords of cells that do not canalize (**Figure 4A, bottom**). The approaches described above to prepare organoids for downstream analysis (Steps 4, 5), were

used to investigate whether these phenotypic differences are reflective of differences in lineage marker expression. Western blot analysis revealed that basal and luminal-derived organoids retain features associated with basal and luminal primary cells. Basal-derived organoids express higher levels of the basal marker cytokeratin 5 (K5), whereas luminal-derived organoids express higher levels of the luminal marker cytokeratin 8 (K8) (**Figure 4B**). Both basal and luminal markers were detected in basal and luminal-derived organoids in the bulk population, perhaps suggestive of differentiation (**Figure 4B**).

We sought to characterize lineage marker expression in basal-derived organoids and determine whether morphologically distinct luminal-derived organoids exhibit differences in marker expression by staining intact organoids and performing confocal microscopy (**Figure 4C**). Basal-derived organoids contained multi-layered epithelium with outer layers expressing high levels of the basal marker p63 and moderate levels of the luminal marker K8 (p63<sup>hi</sup>, K8<sup>mid</sup>), and inner layers without detectable levels of p63 and high levels of K8 (p63<sup>lo</sup>, K8<sup>hi</sup>) (**Figure 4D, top**). While all cells in single-layered luminal-derived organoids stained positively for K8, only select cells contained nuclear p63 (**Figure 4D, bottom**). These data validate the approaches to harvest and prepare organoids for analysis by Western blot or confocal microscopy and thereby expand the capability of the organoid assay to study key cellular processes, including differentiation.

#### FIGURE AND TABLE LEGENDS

**Figure 1: Schematic illustrating workflow to generate prostate organoids for collection and analysis.** Total mouse prostate is dissociated and basal and luminal prostate epithelial cells are isolated by fluorescence-activated cell sorting via established protocols<sup>18,19</sup>. Basal or luminal cells suspended in a mixture of mouse organoid media and matrix gel are plated into matrix gel rings. After 5 to 7 days of culture, organoids are harvested for analysis by Western blot or confocal microscopy.

**Figure 2: Isolation of mouse basal and luminal prostate epithelial cells using Fluorescence-Activated Cell Sorting (FACS).** Dissociated cells from mouse prostate are stained with DAPI, to distinguish live from dead cells, and surface antibodies, to distinguish basal from luminal cells, prior to FACS. Left: Gated on DAPI<sup>-</sup> cells. FSC-A: forward-scatter. Center: Gated on Lin<sup>-</sup> cells (CD45<sup>lo</sup>, CD31<sup>lo</sup>, Ter119<sup>lo</sup>). SSC-A: side-scatter. Right: Basal cells (Bas) (EpCAM<sup>hi</sup>, CD49<sup>fhi</sup>), Luminal cells (Lum) (EpCAM<sup>hi</sup>, CD49<sup>fmid</sup>).

**Figure 3: Establishment of mouse prostate organoids. (A)** Schematic illustrating approach to generate a matrix gel ring in a well of a 24-well plate. **(B)** Representative phase contrast images of organoids (3D growth plane) and two-dimensional colonies (2D growth plane) formed 7 days after plating prostate epithelial cells into un-coated (Poly-HEMA (-)), or coated (Poly-HEMA (+)) 24-well plates. Boxed regions within 2D growth plane are magnified on the right. Scale bars, 200  $\mu$ m.

**Figure 4: Analysis of lineage marker expression in prostate organoids by Western blot and whole-mount confocal microscopy. (A)** Representative phase contrast images of basal-derived (top), and luminal-derived (bottom) organoids after 7 days of culture. Scale bar, 100  $\mu$ m. **(B)**

Western blot analysis of basal-derived (Bas) and luminal-derived (Lum) organoids after 5 days of culture. Staining for the basal marker, cytokeratin 5 (K5), and the luminal marker, cytokeratin 8 (K8), and a loading control, histone H3 (HH3). **(C)** Schematic illustrating chambered coverslip with spacers. **(D)** Representative differential interference contrast (DIC) and immunofluorescent images of basal-derived (top) and luminal-derived (bottom) organoids after 7 days of culture. Staining for p63 (red), K8 (green) and DAPI (blue) individually and merged. Scale bars, 100  $\mu$ m.

**Table 1. Instructions for the preparation of key solutions.**

**Table 2. Instructions for the preparation of mouse organoid media.**

**Table 3. Protocol for preparation of Poly-HEMA-coated plates.**

## DISCUSSION

Prostate epithelial cell differentiation has been implicated in both normal prostate biology<sup>2-7</sup> and disease biology<sup>8,10-12</sup>; however, the master regulators of this process remain undefined. Identifying key regulators of prostate epithelial cell differentiation has been difficult in part due to the absence of well-established contexts to model it. While 2D monolayer culture can be used to model differentiation<sup>11,12</sup>, this context fails to recapitulate the complex prostate microenvironment. Furthermore, in vivo contexts to model differentiation do not lend themselves to mechanistic studies, as they are challenging to manipulate. Therefore, the identification of an easy to manipulate, yet physiologically-relevant context, to study differentiation is critical.

The prostate organoid model represents an elegant ex vivo context where basal to luminal differentiation is reported to occur. Methods to establish prostate organoids are well established<sup>14</sup>; however, further optimization of these methods is necessary. Furthermore, approaches to harvest and prepare prostate organoids for analysis are not clearly described. This paper describes an approach to plate prostate epithelial cells isolated from mouse prostate into organoid culture. This approach allows researchers to (1) prevent the occurrence of 2D colonies during organoid formation, (2) reduce the risk of disruption to the matrix gel during media replenishment, and (3) count organoids more effectively. In addition, this manuscript outlines approaches to harvest organoids for preparation for Western blot analysis, or whole-mount confocal microscopy. Importantly, the approach utilized to prepare organoids for confocal microscopy maintains the intact structure of organoids through its duration, which reduces organoid damage prior to image acquisition. Altogether, the approaches described expand the capabilities of the prostate organoid assay.

Notably, the organoid-forming capacity of basal and luminal cells can be altered both by methods used to isolate the respective populations, and by culture conditions. The organoid culture conditions used in this assay were first described by Karthaus et al.<sup>13</sup>. Whereas Karthaus et al. have reported that basal cells have a higher organoid forming capacity (15%) than luminal cells (1%)<sup>13</sup>, Chua et al., using distinct isolation methods and culture conditions, have reported that luminal cells (0.2-0.3%) have a higher organoid-forming capacity than basal cells (.03%)<sup>20</sup>. Overall,

methods described by Karthaus et al. lead to higher organoid-forming rates for both basal and luminal cells, likely reflecting differences in the approach used to isolate basal and luminal cells<sup>13</sup>, as opposed to culture conditions that bias against organoid formation from luminal cells. It remains unclear whether the protocol described in this manuscript favors luminal organoid formation from multipotent luminal progenitors, or committed-luminal progenitors<sup>9</sup>. Though timely and cost-prohibitive, in vivo lineage tracing studies can be used to validate progenitor features associated with distinct prostate epithelial lineages elucidated in the organoid assay.

Processes such as development, differentiation and transformation are not only relevant to prostate biology, but also relevant to the biology of other tissues including the brain, lung, intestine, pancreas and liver. The methods described facilitate the utilization of the organoid model to study these processes in not only the prostate, but also a wide range of tissues.

#### ACKNOWLEDGEMENTS

PDC and JMG are supported by the Ruth L. Kirschstein National Research Service Award GM007185. JAD is supported by the National Institute of General Medical Sciences of the National Institutes of Health (R25GM055052) awarded to T. Hasson and the Saul Martinez Scholarship. ASG is supported by the Spitzer Family Foundation Fund and the Gill Endowment. This work was supported by the American Cancer Society (RSG-17-068-01-TBG), Department of Defense (W81XWH-13-1-0470), Margaret E. Early Medical Research Trust, NIH/NCI (P50CA092131/UCLA SPORE in Prostate Cancer), Rose Hills Foundation, and support from UCLA's Jonsson Comprehensive Cancer Center, Broad Stem Cell Research Center, Clinical and Translational Science Institute, and Institute of Urologic Oncology.

#### DISCLOSURES

The authors have nothing to disclose.

#### REFERENCES

1. Kwon, O.J., Xin, L. Prostate epithelial stem and progenitor cells. *American Journal of Clinical and Experimental Urology*. **2** (3), 209–218, (2014).
2. Choi, N., Zhang, B., Zhang, L., Ittmann, M., Xin, L. Adult Murine Prostate Basal and Luminal Cells Are Self-Sustained Lineages that Can Both Serve as Targets for Prostate Cancer Initiation. *Cancer Cell*. **21** (2), 253–265, (2012).
3. Ousset, M., Van Keymeulen, A., et al. Multipotent and unipotent progenitors contribute to prostate postnatal development. *Nature Cell Biology*. **14** (11), 1131–1138, (2012).
4. Wang, J., et al. Symmetrical and asymmetrical division analysis provides evidence for a hierarchy of prostate epithelial cell lineages. *Nature Communications*. **5**, 1–13, (2014).
5. Wang, Z.A., Mitrofanova, A., et al. Lineage analysis of basal epithelial cells reveals their unexpected plasticity and supports a cell-of-origin model for prostate cancer heterogeneity. *Nature Cell Biology*. **15**, (3), 274–283, (2013).
6. Kwon, O.J., Zhang, B., Zhang, L., Xin, L. High fat diet promotes prostatic basal-to-luminal differentiation and accelerates initiation of prostate epithelial hyperplasia originated from basal cells. *Stem Cell Research*. **16** (3), 682–691, (2016).
7. Kwon O.J., Zhang L, Ittmann, M.M., Xin L. Prostatic inflammation enhances basal-to-



- luminal differentiation and accelerates initiation of prostate cancer with a basal cell origin. *Proceedings of the National Academy of Sciences*. **192** (3), 997–999, (2014).
8. Stoyanova, T., *et al.* Prostate cancer originating in basal cells progresses to adenocarcinoma propagated by luminal-like cells. *Proceedings of the National Academy of Sciences*. **110** (50), 20111–20116, (2013).
9. Agarwal, S., Hynes, P.G., *et al.* Identification of Different Classes of Luminal Progenitor Cells within Prostate Tumors. *Cell Reports*. **13** (10), 2147–2158, (2015).
10. Ku, S.Y., *et al.* Rb1 and Trp53 cooperate to suppress prostate cancer lineage plasticity, metastasis, and antiandrogen resistance. *Science*. **355** (6320), 78–83, (2017).
11. Mu, P., *et al.* SOX2 promotes lineage plasticity and antiandrogen resistance in TP53- and RB1-deficient prostate cancer. *Science*. **355** (6320), 84–88, (2017).
12. Bishop, J.L., *et al.* The Master Neural Transcription Factor BRN2 Is an Androgen Receptor–Suppressed Driver of Neuroendocrine Differentiation in Prostate Cancer. *Cancer Discovery*. **7** (1), 54–71, (2016).
13. Karthaus, W.R., *et al.* Identification of multipotent luminal progenitor cells in human prostate organoid cultures. *Cell*. **159** (1), 163–175, (2014).
14. Drost, J., Karthaus, W.R., *et al.* Organoid culture systems for prostate epithelial and cancer tissue. *Nature Protocols*. **11** (2), 347–358, (2016).
15. McCray, T., Richards, Z., Marsili, J., Prins, G.S., Nonn, L. Handling and Assessment of Human Primary Prostate Organoid Culture. *Journal of Visualized Experiments*. (143), doi:10.3791/59051 (2019).
16. Lawson, D.A, Xin, L., Lukacs, R.U., Cheng, D. & Witte, O.N. Isolation and functional characterization of murine prostate stem cells. *Proceedings of the National Academy of Sciences of the United States of America*. **104** (1), 181–186, (2007).
17. Chen, H.Y., Kaya, K.D., Dong, L. & Swaroop, A. Three-dimensional retinal organoids from mouse pluripotent stem cells mimic in vivo development with enhanced stratification and rod photoreceptor differentiation. *Molecular vision*. **22**, 1077–1094, (2016).
18. Liu, X., *et al.* Low CD38 Identifies Progenitor-like Inflammation-Associated Luminal Cells that Can Initiate Human Prostate Cancer and Predict Poor Outcome. *Cell Reports*. **17** (10), 2596–2606, (2016).
19. Lukacs, R.U., Goldstein, A.S., Lawson, D.A., Cheng, D., Witte, O.N. Isolation, cultivation and characterization of adult murine prostate stem cells. *Nature protocols*. **5** (4), 702–713, (2010).
20. Chua, C. W., Shibata, M., *et al.* Single luminal epithelial progenitors can generate prostate organoids in culture. *Nature Cell Biology*. **16** (10), 951–961, (2014).

# Figure 1

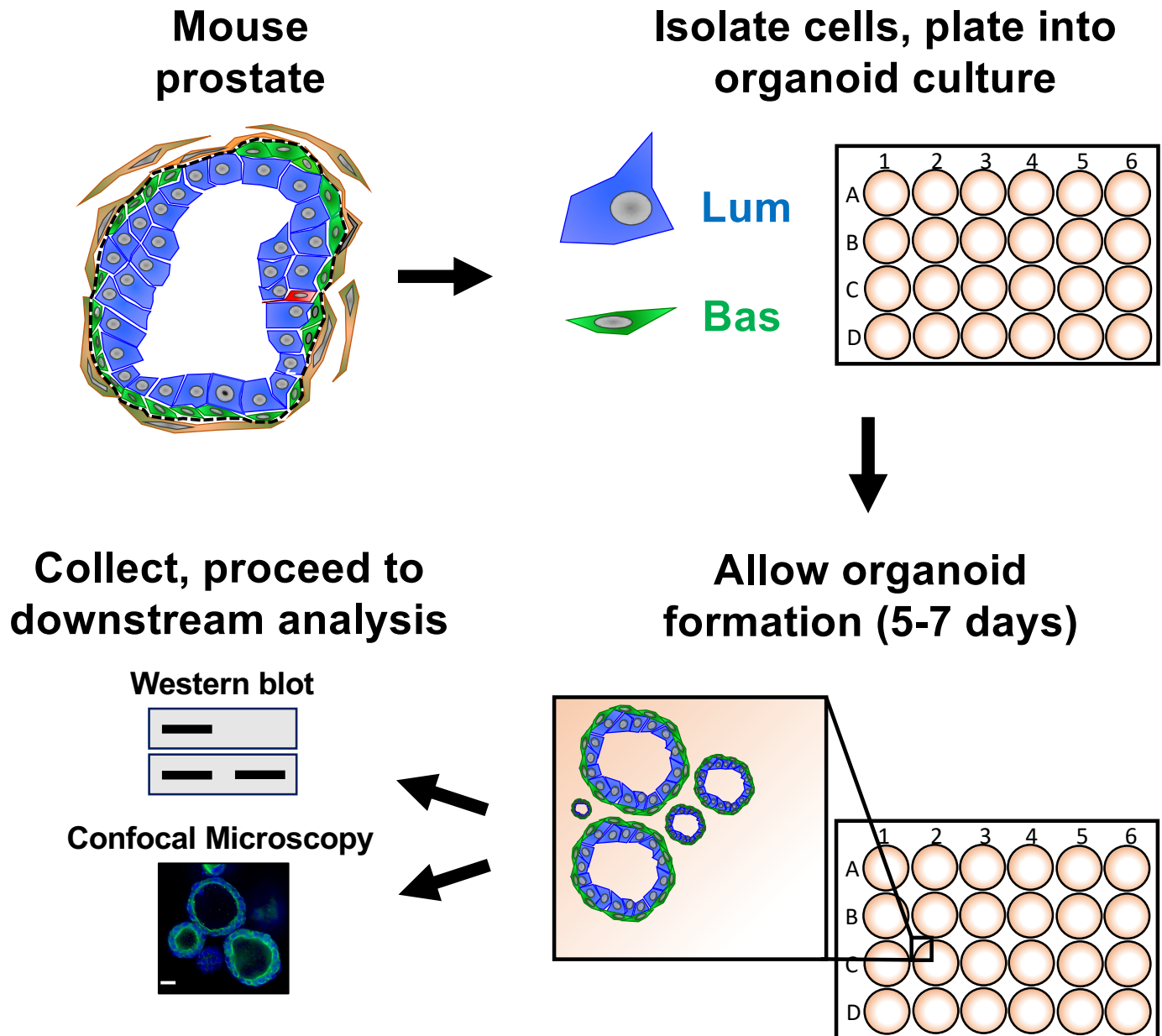
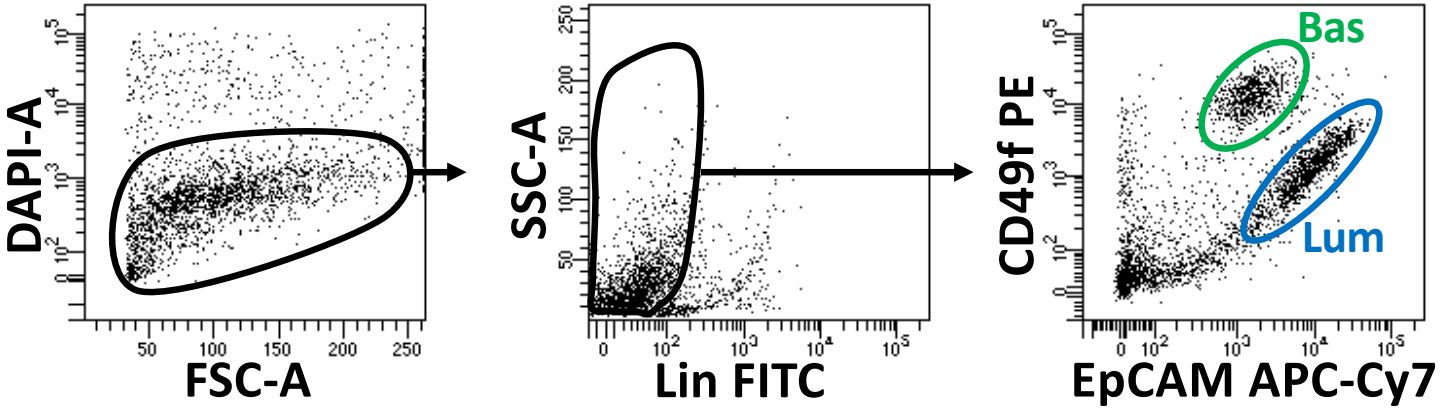


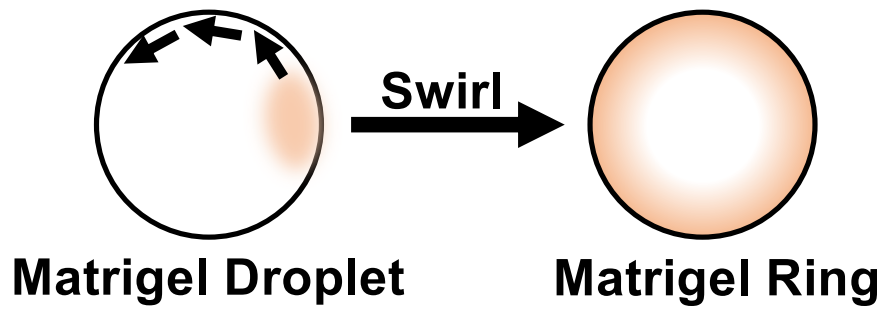
Figure 2



# Figure 3

A.

Representative well  
(24-well plate)

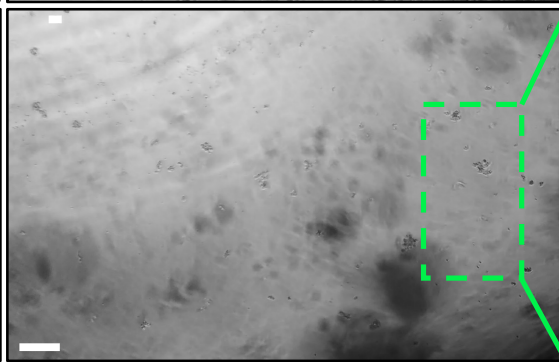
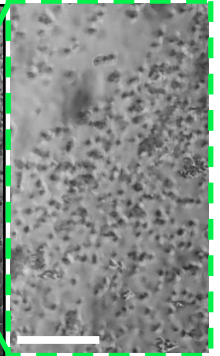
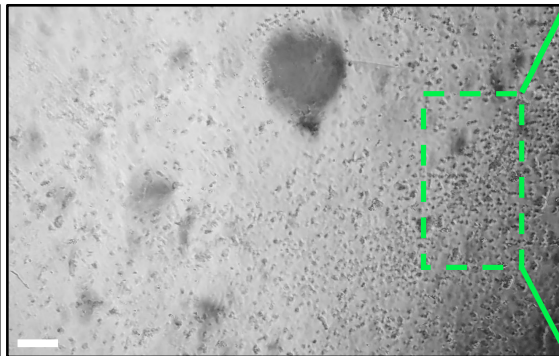
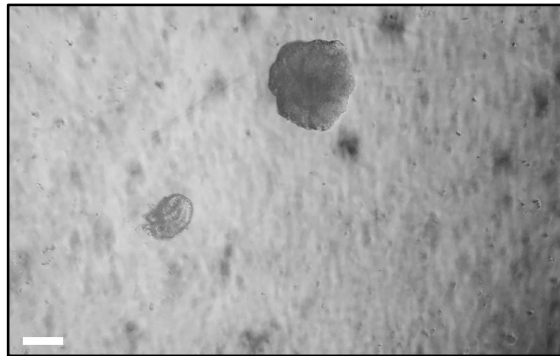


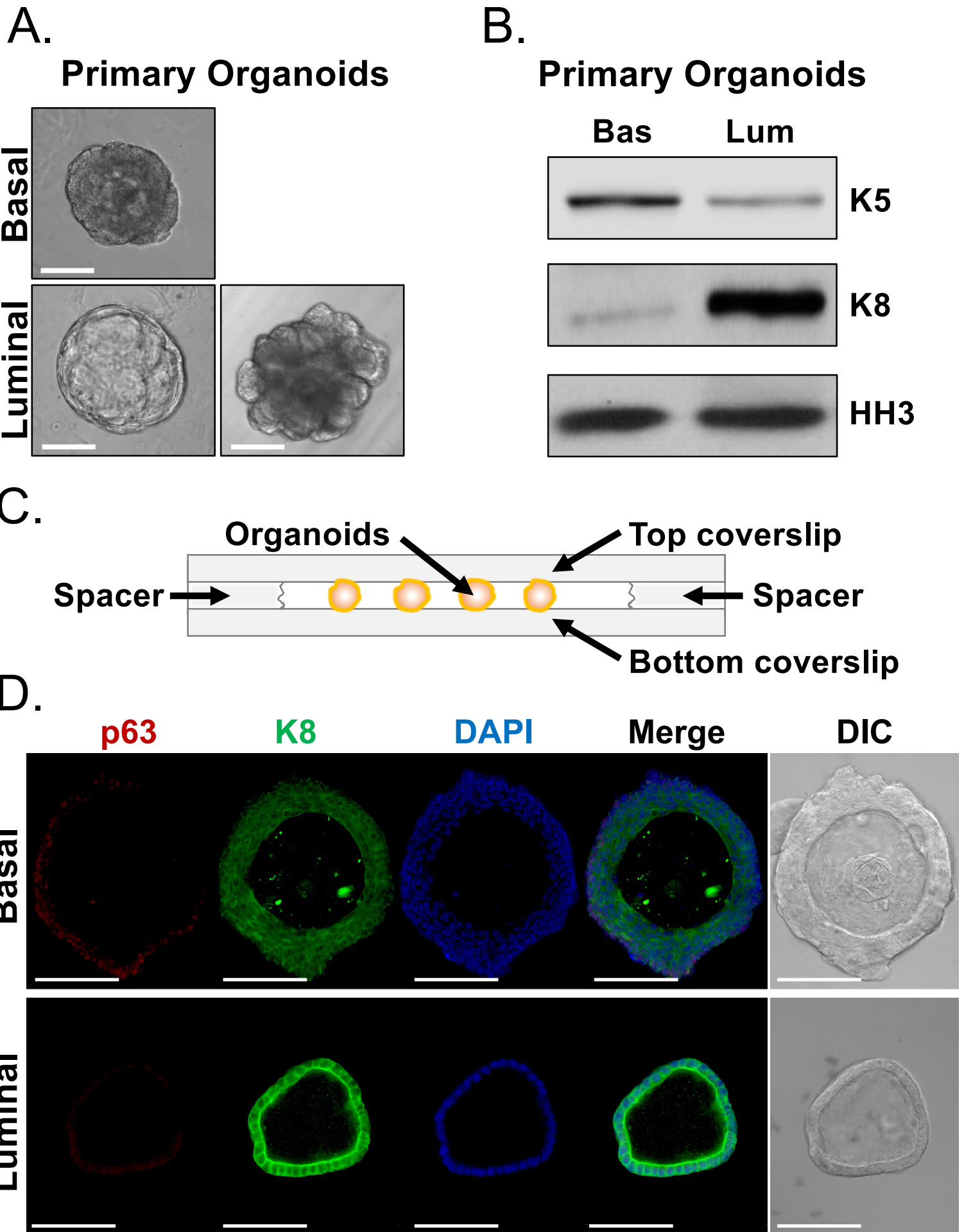
B.

3D growth plane

2D growth plane

Poly-HEMA (-)



**Figure 4**

Recipes	
Dispase-containing media	1 mg dispase per ml advanced DMEM F12, 10 µM ROCK inhibitor. Filter sterilize using 0.22 µm filter.
Dissociation media	RPMI-1640 + 10% FBS + 1% Penicillin-Streptomycin. Filter sterilize using 0.22 µm filter.
Protein lysis buffer	RIPA buffer + phosphatase inhibitors + protease inhibitors
Blocking solution	10% FBS in PBS with 0.2% Triton X-100

Component	Concentration
B-27	50x
GlutaMAX	100x
N-acetyl-L-cysteine	1.25 mM
Normocin	50 µg/mL
Recombinant Human EGF, Animal-Free	50 ng/mL
Recombinant Human Noggin	100 ng/mL
R-spondin 1-conditioned media	10% conditioned media
A83-01	200 nM
DHT	1 nM
Y-27632 dihydrochloride (ROCK inhibitor)	10 µM
Advanced DMEM/F-12	Base media
R-spondin 1-conditioned media is generated as described in Drost, <i>et al</i> <sup>13</sup> . After addition of all components, filter sterilize mouse organoid media using 0.22 µm filter. ROCK inhibitor is only added during establishment of culture and passaging of organoids.	

Protocol for preparing Poly-HEMA-coated plates	
1	Add 0.25 g Poly-HEMA to 50 ml 98% EtOH. Dissolve Poly-HEMA at 37 °C on a shaker. This process takes <b>at least 4 hr</b> .
2	Filter sterilize Poly-HEMA using 0.22 µm filter.
3	Add 200 µl of Poly-HEMA solution per well of a 24-well plate(s).
4	Remove lid(s) from 24-well plate(s) after adding Poly-HEMA and allow solution to evaporate overnight.
5	Wash each well twice with PBS and ensure wells are completely dry prior to storage after final wash. NOTE: Disrupting the Poly-HEMA coating during washing could contribute to 2-dimensional growth upon plating epithelial cells into organoid culture. To prevent damage to Poly-HEMA-coated wells, avoid direct contact with the pipette tip while washing. The integrity of the Poly-HEMA-coated wells will remain intact unless the Poly-HEMA is scraped off by the pipette tip.
6	Poly-HEMA-coated plates can be stored at 4 °C for up to two weeks. <b>NOTE:</b> Wrapping plates in parafilm prior to storage will reduce the risk of contamination.



Name	Company
μ-Dish 35mm, high	ibidi
16% Paraformaldehyde	Thermo Fisher Scientific
4',6-diamidino-2-phenylindole (DAPI)	Thermo Fisher Scientific
A83-01	Tocris
Advanced DMEM/F-12	Thermo Fisher Scientific
APC/Cy7 anti-mouse CD326 (Ep-CAM) Antibody, 100 ug	BioLegend
B-27 Supplement (50x), Serum Free	Thermo Fisher Scientific
cOmplete Protease Inhibitor Cocktail	Sigma
(DiHydro)testosterone (5α-Androstan-17β-ol-3-one)	Sigma
Dispase II, Powder	Thermo Fisher Scientific
Fetal Bovine Serum (FBS)	Sigma
FITC anti-mouse CD31 Antibody (0.5 mg/ml, 50 ug)	BioLegend
FITC anti-mouse CD45 Antibody (0.5 mg/ml, 50 ug)	BioLegend
FITC anti-mouse TER-119/Erythroid Cells Antibody (0.5 mg/ml)	BioLegend
Goat anti-mouse IgG-Alexa Fluor 488	Invitrogen
Goat anti-rabbit IgG-Alexa Fluor 594	Invitrogen
GlutaMAX	Thermo Fisher Scientific
Halt Phosphatase Inhibitor	Thermo Fisher Scientific
Matrigel GFR Membrane Matrix	Corning
Mouse anti-cytokeratin 8	BioLegend
N-acetyl-L-cysteine	Sigma
Normocin	Thermo Fisher Scientific
PE anti-human/mouse CD49f Antibody	BioLegend
Penicillin-Streptomycin (10,000 U/mL)	Thermo Fisher Scientific
Poly(2-hydroxyethyl methacrylate) (Poly-HEMA)	Sigma
Rabbit anti-p63	BioLegend
Radioimmunoprecipitation assay (RIPA)	Thermo Fisher Scientific
Recombinant Human EGF, Animal-Free	PeproTech
Recombinant Human Noggin	PeproTech
RPMI 1640 Medium, HEPES (cs of 10)	Thermo Fisher Scientific
Sonic Dismembrator	Thermo Fisher Scientific
Sucrose	Sigma
Triton X-100	Sigma
Y-27632 dihydrochloride (ROCK inhibitor)	Selleck Chemical

**Catalog Number**

81156

50-980-487

D1306

2939

12634010

118218

17504044

11836145001

A-8380

17-105-041

F8667

102405

103107

116205

A28175

A11012

35050061

78428

CB-40230C

904804

A9165

ant-nr-1

313612

15-140-122

P3932-25G

619002

PI89901

AF-100-15

120-10C

22400105

FB120

S0389-500G

X100-5ML

S1049-50MG

## ARTICLE AND VIDEO LICENSE AGREEMENT

Title of Article:	Evaluating the Differentiation Capacity of Mouse Prostate Epithelial Cells Using Organoid Culture
Author(s):	Preston D. Crowell, Jenna M. Giafaglione, Takao Hashimoto, Johnny A. Diaz, Andrew S. Goldstein

Item 1: The Author elects to have the Materials be made available (as described at <http://www.jove.com/publish>) via:

☐

Standard Access

☒

Open Access

Item 2: Please select one of the following items:

☒

The Author is **NOT** a United States government employee.

☐

The Author is a United States government employee and the Materials were prepared in the course of his or her duties as a United States government employee.

☐

The Author is a United States government employee but the Materials were NOT prepared in the course of his or her duties as a United States government employee.

### ARTICLE AND VIDEO LICENSE AGREEMENT

1. **Defined Terms.** As used in this Article and Video License Agreement, the following terms shall have the following meanings: **"Agreement"** means this Article and Video License Agreement; **"Article"** means the article specified on the last page of this Agreement, including any associated materials such as texts, figures, tables, artwork, abstracts, or summaries contained therein; **"Author"** means the author who is a signatory to this Agreement; **"Collective Work"** means a work, such as a periodical issue, anthology or encyclopedia, in which the Materials in their entirety in unmodified form, along with a number of other contributions, constituting separate and independent works in themselves, are assembled into a collective whole; **"CRC License"** means the Creative Commons Attribution-Non Commercial-No Derivs 3.0 Unported Agreement, the terms and conditions of which can be found at: <http://creativecommons.org/licenses/by-nc-nd/3.0/legalcode>; **"Derivative Work"** means a work based upon the Materials or upon the Materials and other pre-existing works, such as a translation, musical arrangement, dramatization, fictionalization, motion picture version, sound recording, art reproduction, abridgment, condensation, or any other form in which the Materials may be recast, transformed, or adapted; **"Institution"** means the institution, listed on the last page of this Agreement, by which the Author was employed at the time of the creation of the Materials; **"JoVE"** means MyJoVE Corporation, a Massachusetts corporation and the publisher of The Journal of Visualized Experiments; **"Materials"** means the Article and / or the Video; **"Parties"** means the Author and JoVE; **"Video"** means any video(s) made by the Author, alone or in conjunction with any other parties, or by JoVE or its affiliates or agents, individually or in collaboration with the Author or any other parties, incorporating all or any portion

of the Article, and in which the Author may or may not appear.

2. **Background.** The Author, who is the author of the Article, in order to ensure the dissemination and protection of the Article, desires to have the JoVE publish the Article and create and transmit videos based on the Article. In furtherance of such goals, the Parties desire to memorialize in this Agreement the respective rights of each Party in and to the Article and the Video.

3. **Grant of Rights in Article.** In consideration of JoVE agreeing to publish the Article, the Author hereby grants to JoVE, subject to **Sections 4** and **7** below, the exclusive, royalty-free, perpetual (for the full term of copyright in the Article, including any extensions thereto) license (a) to publish, reproduce, distribute, display and store the Article in all forms, formats and media whether now known or hereafter developed (including without limitation in print, digital and electronic form) throughout the world, (b) to translate the Article into other languages, create adaptations, summaries or extracts of the Article or other Derivative Works (including, without limitation, the Video) or Collective Works based on all or any portion of the Article and exercise all of the rights set forth in (a) above in such translations, adaptations, summaries, extracts, Derivative Works or Collective Works and (c) to license others to do any or all of the above. The foregoing rights may be exercised in all media and formats, whether now known or hereafter devised, and include the right to make such modifications as are technically necessary to exercise the rights in other media and formats. If the "Open Access" box has been checked in **Item 1** above, JoVE and the Author hereby grant to the public all such rights in the Article as provided in, but subject to all limitations and requirements set forth in, the CRC License.

## ARTICLE AND VIDEO LICENSE AGREEMENT

4. **Retention of Rights in Article.** Notwithstanding the exclusive license granted to JoVE in **Section 3** above, the Author shall, with respect to the Article, retain the non-exclusive right to use all or part of the Article for the non-commercial purpose of giving lectures, presentations or teaching classes, and to post a copy of the Article on the Institution's website or the Author's personal website, in each case provided that a link to the Article on the JoVE website is provided and notice of JoVE's copyright in the Article is included. All non-copyright intellectual property rights in and to the Article, such as patent rights, shall remain with the Author.

5. **Grant of Rights in Video – Standard Access.** This **Section 5** applies if the "Standard Access" box has been checked in **Item 1** above or if no box has been checked in **Item 1** above. In consideration of JoVE agreeing to produce, display or otherwise assist with the Video, the Author hereby acknowledges and agrees that, Subject to **Section 7** below, JoVE is and shall be the sole and exclusive owner of all rights of any nature, including, without limitation, all copyrights, in and to the Video. To the extent that, by law, the Author is deemed, now or at any time in the future, to have any rights of any nature in or to the Video, the Author hereby disclaims all such rights and transfers all such rights to JoVE.

6. **Grant of Rights in Video – Open Access.** This **Section 6** applies only if the "Open Access" box has been checked in **Item 1** above. In consideration of JoVE agreeing to produce, display or otherwise assist with the Video, the Author hereby grants to JoVE, subject to **Section 7** below, the exclusive, royalty-free, perpetual (for the full term of copyright in the Article, including any extensions thereto) license (a) to publish, reproduce, distribute, display and store the Video in all forms, formats and media whether now known or hereafter developed (including without limitation in print, digital and electronic form) throughout the world, (b) to translate the Video into other languages, create adaptations, summaries or extracts of the Video or other Derivative Works or Collective Works based on all or any portion of the Video and exercise all of the rights set forth in (a) above in such translations, adaptations, summaries, extracts, Derivative Works or Collective Works and (c) to license others to do any or all of the above. The foregoing rights may be exercised in all media and formats, whether now known or hereafter devised, and include the right to make such modifications as are technically necessary to exercise the rights in other media and formats. For any Video to which this **Section 6** is applicable, JoVE and the Author hereby grant to the public all such rights in the Video as provided in, but subject to all limitations and requirements set forth in, the CRC License.

7. **Government Employees.** If the Author is a United States government employee and the Article was prepared in the course of his or her duties as a United States government employee, as indicated in **Item 2** above, and any of the licenses or grants granted by the Author hereunder exceed the scope of the 17 U.S.C. 403, then the rights granted hereunder shall be limited to the maximum

rights permitted under such statute. In such case, all provisions contained herein that are not in conflict with such statute shall remain in full force and effect, and all provisions contained herein that do so conflict shall be deemed to be amended so as to provide to JoVE the maximum rights permissible within such statute.

8. **Protection of the Work.** The Author(s) authorize JoVE to take steps in the Author(s) name and on their behalf if JoVE believes some third party could be infringing or might infringe the copyright of either the Author's Article and/or Video.

9. **Likeness, Privacy, Personality.** The Author hereby grants JoVE the right to use the Author's name, voice, likeness, picture, photograph, image, biography and performance in any way, commercial or otherwise, in connection with the Materials and the sale, promotion and distribution thereof. The Author hereby waives any and all rights he or she may have, relating to his or her appearance in the Video or otherwise relating to the Materials, under all applicable privacy, likeness, personality or similar laws.

10. **Author Warranties.** The Author represents and warrants that the Article is original, that it has not been published, that the copyright interest is owned by the Author (or, if more than one author is listed at the beginning of this Agreement, by such authors collectively) and has not been assigned, licensed, or otherwise transferred to any other party. The Author represents and warrants that the author(s) listed at the top of this Agreement are the only authors of the Materials. If more than one author is listed at the top of this Agreement and if any such author has not entered into a separate Article and Video License Agreement with JoVE relating to the Materials, the Author represents and warrants that the Author has been authorized by each of the other such authors to execute this Agreement on his or her behalf and to bind him or her with respect to the terms of this Agreement as if each of them had been a party hereto as an Author. The Author warrants that the use, reproduction, distribution, public or private performance or display, and/or modification of all or any portion of the Materials does not and will not violate, infringe and/or misappropriate the patent, trademark, intellectual property or other rights of any third party. The Author represents and warrants that it has and will continue to comply with all government, institutional and other regulations, including, without limitation all institutional, laboratory, hospital, ethical, human and animal treatment, privacy, and all other rules, regulations, laws, procedures or guidelines, applicable to the Materials, and that all research involving human and animal subjects has been approved by the Author's relevant institutional review board.

11. **JoVE Discretion.** If the Author requests the assistance of JoVE in producing the Video in the Author's facility, the Author shall ensure that the presence of JoVE employees, agents or independent contractors is in accordance with the relevant regulations of the Author's institution. If more than one author is listed at the beginning of this Agreement, JoVE may, in its sole

## ARTICLE AND VIDEO LICENSE AGREEMENT

discretion, elect not take any action with respect to the Article until such time as it has received complete, executed Article and Video License Agreements from each such author. JoVE reserves the right, in its absolute and sole discretion and without giving any reason therefore, to accept or decline any work submitted to JoVE. JoVE and its employees, agents and independent contractors shall have full, unfettered access to the facilities of the Author or of the Author's institution as necessary to make the Video, whether actually published or not. JoVE has sole discretion as to the method of making and publishing the Materials, including, without limitation, to all decisions regarding editing, lighting, filming, timing of publication, if any, length, quality, content and the like.

12. **Indemnification.** The Author agrees to indemnify JoVE and/or its successors and assigns from and against any and all claims, costs, and expenses, including attorney's fees, arising out of any breach of any warranty or other representations contained herein. The Author further agrees to indemnify and hold harmless JoVE from and against any and all claims, costs, and expenses, including attorney's fees, resulting from the breach by the Author of any representation or warranty contained herein or from allegations or instances of violation of intellectual property rights, damage to the Author's or the Author's institution's facilities, fraud, libel, defamation, research, equipment, experiments, property damage, personal injury, violations of institutional, laboratory, hospital, ethical, human and animal treatment, privacy or other rules, regulations, laws, procedures or guidelines, liabilities and other losses or damages related in any way to the submission of work to JoVE, making of videos by JoVE, or publication in JoVE or elsewhere by JoVE. The Author shall be responsible for, and shall hold JoVE harmless from, damages caused by lack of sterilization, lack of cleanliness or by contamination due to

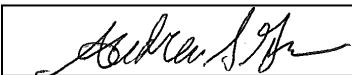
the making of a video by JoVE its employees, agents or independent contractors. All sterilization, cleanliness or decontamination procedures shall be solely the responsibility of the Author and shall be undertaken at the Author's expense. All indemnifications provided herein shall include JoVE's attorney's fees and costs related to said losses or damages. Such indemnification and holding harmless shall include such losses or damages incurred by, or in connection with, acts or omissions of JoVE, its employees, agents or independent contractors.

13. **Fees.** To cover the cost incurred for publication, JoVE must receive payment before production and publication of the Materials. Payment is due in 21 days of invoice. Should the Materials not be published due to an editorial or production decision, these funds will be returned to the Author. Withdrawal by the Author of any submitted Materials after final peer review approval will result in a US\$1,200 fee to cover pre-production expenses incurred by JoVE. If payment is not received by the completion of filming, production and publication of the Materials will be suspended until payment is received.

14. **Transfer, Governing Law.** This Agreement may be assigned by JoVE and shall inure to the benefits of any of JoVE's successors and assignees. This Agreement shall be governed and construed by the internal laws of the Commonwealth of Massachusetts without giving effect to any conflict of law provision thereunder. This Agreement may be executed in counterparts, each of which shall be deemed an original, but all of which together shall be deemed to be one and the same agreement. A signed copy of this Agreement delivered by facsimile, e-mail or other means of electronic transmission shall be deemed to have the same legal effect as delivery of an original signed copy of this Agreement.

A signed copy of this document must be sent with all new submissions. Only one Agreement is required per submission.

### CORRESPONDING AUTHOR

Name:	Andrew Goldstein	
Department:	Molecular, Cell & Developmental Biology	
Institution:	University of California, Los Angeles	
Title:	Assistant Professor-in-Residence	
Signature:		Date: 5-3-2019

Please submit a **signed** and **dated** copy of this license by one of the following three methods:

1. Upload an electronic version on the JoVE submission site
2. Fax the document to +1.866.381.2236
3. Mail the document to JoVE / Attn: JoVE Editorial / 1 Alewife Center #200 / Cambridge, MA 02140

**1. The figures are still not numbered in the order of their appearance in the manuscript. Figure 2 (line 117, step 1.5) was first cited in the manuscript, so it should be numbered as Figure 1.**

Figure 1 is now cited prior to Figure 2.

**2. Step 2.5: Please specify the composition of master mixes.**

We have combined steps 2.5 and 2.6 to clarify the composition of the master mixes.

**3. 5.2.5: Please specify the primary antibody.**

We have added primary antibody information to 5.2.5 and to the Catalog Numbers document.

**4. 5.2.8: Please specify the secondary antibody.**

We have added secondary antibody information to 5.2.8 and to the Catalog Numbers document.

**5. Please define all abbreviations before use, e.g., PBS, DAPI, etc.**

All abbreviations are now defined before use.

**6. Please ensure that the references appear as the following:**

**Lastname, F.I., LastName, F.I., LastName, F.I. Article Title. Source. Volume (Issue), FirstPage – LastPage, (YEAR).**

The formatting of the references has been corrected.