

Journal of Visualized Experiments

Ex Vivo Method for Assessing the Mouse Reproductive Tract Spontaneous Motility and a MATLAB-based Uterus Motion Tracking Algorithm for Data Analysis --Manuscript Draft--

Article Type:	Invited Methods Article - JoVE Produced Video
Manuscript Number:	JoVE59848R2
Full Title:	Ex Vivo Method for Assessing the Mouse Reproductive Tract Spontaneous Motility and a MATLAB-based Uterus Motion Tracking Algorithm for Data Analysis
Keywords:	Uterus, Spontaneous uterine motility, Epinephrine, Reproductive tract, Mice, Ex vivo model
Corresponding Author:	Alexander G. Obukhov Indiana University School of Medicine Indianapolis, Indiana UNITED STATES
Corresponding Author's Institution:	Indiana University School of Medicine
Corresponding Author E-Mail:	aobukhov@iupui.edu
Order of Authors:	Kaley L. Liang Julia O. Bursova Frank Lam Xingjuan Chen Alexander G. Obukhov
Additional Information:	
Question	Response
Please indicate whether this article will be Standard Access or Open Access.	Standard Access (US\$2,400)
Please indicate the city, state/province, and country where this article will be filmed . Please do not use abbreviations.	Indianapolis, IN, USA

TITLE:

Ex Vivo Method for Assessing the Mouse Reproductive Tract Spontaneous Motility and a MATLAB-based Uterus Motion Tracking Algorithm for Data Analysis

AUTHORS & AFFILIATIONS:

Kaley L. Liang^{1*}, Julia O. Bursova^{1*}, Frank Lam¹, Xingjuan Chen¹, Alexander G. Obukhov¹

¹The Department of Cellular and Integrative Physiology, Indiana University School of Medicine, Indianapolis, IN, USA

*These two authors equally contributed to this work.

Corresponding Author:

Alexander G. Obukhov

Email Address: aobukhov@iu.edu

KEYWORDS:

uterus, spontaneous uterine motility, epinephrine, reproductive tract, mice, ex vivo model

SHORT ABSTRACT:

Uterine contractions are important for the well-being of females. However, pathologically increased contractility may result in dysmenorrhea, especially in younger females. Here, we describe a simple ex vivo preparation allowing quick assessment of the efficacy of smooth muscle relaxants that may be used for treating dysmenorrhea.

LONG ABSTRACT:

Dysmenorrhea, or painful cramping, is the most common symptom associated with menses in females and its severity can hinder women's everyday lives. Here, we present an easy and inexpensive method that would be instrumental for testing new drugs decreasing uterine contractility. This method utilizes the unique ability of the entire mouse reproductive tract to exhibit spontaneous motility when maintained ex vivo in a Petri dish containing oxygenated Krebs buffer. This spontaneous motility resembles the wave-like myometrial activity of the human uterus, referred to as endometrial waves. To demonstrate the effectiveness of the method, we employed a well-known uterine relaxant drug, epinephrine. We demonstrate that the spontaneous motility of the entire mouse reproductive tract can be quickly and reversibly inhibited by 1 μ M epinephrine in this Petri dish model. Documenting the changes of uterine motility can be easily done using an ordinary smart phone or a sophisticated digital camera. We developed a MATLAB-based algorithm allowing motion tracking to quantify spontaneous uterine motility changes by measuring the rate of uterine horn movements. A major advantage of this ex vivo approach is that the reproductive tract remains intact throughout the entire experiment, preserving all intrinsic intrauterine cellular interactions. The major limitation of this approach is that up to 10-20% of uteri may exhibit no spontaneous motility. Thus far, this is the first quantitative *ex vivo* method for assessing spontaneous uterine motility in a Petri dish model.

INTRODUCTION:

As a major female organ, the uterus is crucial for reproduction and essential for the nourishment of the fetus¹. The uterus consists of three layers: the perimetrium, myometrium and endometrium. The myometrium is the major contractile layer of the uterus and plays a key role in fetus delivery. The endometrium is the innermost layer lining the uterine cavity and is essential for embryo implantation. In non-pregnant females of reproductive age, the endometrial layer is shed monthly at the beginning of the menstrual cycle. The myometrium aids in this shedding process by maintaining the spontaneous myometrial contractions needed for clearing the necrotic endometrial tissue from the uterus¹.

Unfortunately, increased myometrial contractility can result in negative side effects such as dysmenorrhea, or painful menstrual cramps. This is especially seen in young females and nulliparous women². However, dysmenorrhea is different for every woman and depends on the strength of their myometrial contractions; stronger contractions are often associated with the sensation of severe cramping³. Myometrial contractility can be visualized using uterine ultrasound and is often recognized as endometrial waves. Enhanced release of prostaglandins during menstruation⁴ in a uterus undergoing endometrial sloughing is believed to contribute to increased myometrial hypercontractility, resulting in ischemia and hypoxia of the uterine muscle and thus increased pain³.

Severe dysmenorrhea can hinder the day-to-day activity of some women and 3 to 33% of women have very severe pain, which could cause a woman to be bedridden for 1 to 3 days each menstrual cycle⁵. Dysmenorrhea is the leading cause of gynecological morbidity in women of reproductive age regardless of age, nationality, and economic status⁵. The estimated prevalence of dysmenorrhea is both high and variable, ranging from 45% to 93% in women of reproductive age⁵. Dysmenorrhea-associated pain has an effect on the daily life of women and may result in poor academic performance in adolescents, lower quality of sleep, restriction of daily activities, and mood changes⁵.

Many women who experience severe dysmenorrhea resort to over-the-counter medications to relieve their pain. Such over-the-counter medications contain cyclooxygenase (COX) inhibitors which prevent the formation of prostaglandins⁶. However, COX inhibitors are associated with adverse cardiovascular events, and about 18% of women with dysmenorrhea are unresponsive to these inhibitors⁷. Therefore, there is a need for new medications to reduce menstrual cramps. Since over contractility of the uterus contributes to the pathogenesis of dysmenorrhea, one possible strategy may be the usage of uterine relaxants.

It is beneficial to quantify the effects of potential relaxant drugs in a model of naturally occurring spontaneous myometrial wave-like contractions. However, thus far, no efficient ex vivo method for testing muscle-relaxing drugs in the intact uterus has been described. Currently, isometric tension measurements are used to evaluate relaxant drug effects. During such measurements, a uterine muscle strip is maintained at a constant length under preload in a tissue bath while the force of uterine muscle contractions is recorded before and after oxytocin stimulation in the presence or absence of a relaxant drug. Although this approach is very useful, it requires expensive equipment. Furthermore, isometric contractions do not resemble the spontaneous

myometrial wave-like contractions that naturally occur in the intact uterus. Uniquely, the uterine myometrial waves in rodents can be visualized as uterine horn motility when the entire reproductive tract (ovaries, oviducts, uterus, and vagina) is maintained in a buffer solution. Here, we present an ex vivo method for monitoring the spontaneous motility of the intact mouse uterus placed in a Petri dish containing oxygenated Krebs buffer. We also describe a motility quantification algorithm utilizing the MATLAB motion tracker. This novel approach provides an easy and less expensive alternative to test the relaxant potential of naturally occurring remedies and synthetic compounds.

PROTOCOL:

All procedures with animals have been approved by the Institutional Animal Care and Use Committee at the Indiana University School of Medicine (Indianapolis, IN). 2-5 month-old F2-129S-C57BL/6 sexually-mature female mice were used in the study.

CAUTION: Ensure safety by wearing a lab coat, mask, and gloves when working with animals and biohazardous materials.

1. Solution preparation

1.1. Prepare the Krebs Buffer, which contains: 130 mM NaCl, 5 mM KCl, 2 mM CaCl₂, 1.2 mM NaH₂PO₄, 0.56 mM MgCl₂, 25 mM NaHCO₃, and 5 mM glucose, pH 7.4. Continuously oxygenate the Krebs buffer with a mixture of compressed gases containing 5% CO₂ and 95% O₂ while maintaining the buffer temperature at 37 °C using a circulating water bath.

1.2. Prepare Dulbecco's Phosphate-Buffered Saline (DPBS), which contains: 2.68 mM KCl, 1.47 mM KH₂PO₄, 136.89 mM NaCl, and 8.1 mM Na₂HPO₄, pH 7.4.

2. Animal preparation

2.1. Anesthetize mice using inhalation of isoflurane (3%) with waste gas scavenging. Ensure adequate anesthesia by assessing withdrawal reflexes. Pinch the rear toe to affirm no movements are elicited, indicating loss of reflex responses. After the deep anesthesia is achieved, euthanize the animal by decapitation.

NOTE: Isoflurane may cause smooth muscle dilation. Therefore, the reproductive tract preparation should be extensively washed and incubated in the Krebs buffer for at least 15-30 min before beginning the ex vivo experiments. Isoflurane may cause irritation and discomfort when it is in contact with the skin, so proceed with caution.

2.2. Place the body on a large weigh boat lined with a paper towel.

NOTE: Pregnant female laboratory personnel should not be involved in experiments with isoflurane because it can decrease fetal weight, decrease fetal skeletal ossification, and increase the risk of spontaneous abortion^{8,9}. CO₂ inhalation can be used as a substitute to euthanize mice.

3. Determination of estrous cycle stage

3.1. With small forceps, lift the clitoris to gain access to the vaginal ostium and slowly insert a micropipette tip containing 10 μ L of DPBS into the vagina.

3.1.1. Ensure the micropipette tip is inserted through the ostium at an angle of 10 - 30° to avoid puncturing the vaginal wall. The liquid should still be visible in the tip after insertion. If the liquid is not visible, the tip was inserted too far into the vagina, and the paracervical area of the vagina might have been perforated.

3.1.2. Lightly pull down on the vaginal ostium muscles with the tip of the micropipette to allow air to exit from the vagina.

3.2. Slowly flush the vaginal cavity by pipetting up and down 2-3 times with 10 μ L of DPBS and place the drawn cell suspension on a glass slide.

3.3. Use an Inverted Phase Contrast Microscope to determine the estrous cycle stage through cytologic analysis. The procedure is done as described elsewhere^{10,11}. Ensure the cell suspension does not dry out before cytologic analysis can be performed. The suspension may be diluted with fresh DPBS, if necessary.

4. mouse reproductive tract dissection

4.1. Arrange the mouse in a supine position and spread its extremities to expose the abdominopelvic region.

4.2. Spray with 70% ethanol to moisten and disinfect the abdominopelvic area.

4.3. Using forceps, carefully lift the skin located superior to the clitoris. Make small transverse incisions on the lateral aspects of the lower abdominal area, up to the upper extremities to expose the peritoneum (**Figure 1A**). During this process, an external flap will form. As small incisions are continually made, the flap will increase in size.

4.4. Carefully cut through the peritoneum to expose the gastrointestinal tract (**Figure 1B**). It is important to note that the uterine horns can oftentimes be located directly under the peritoneum, so make incisions cautiously and do not touch the horns as this can affect uterine motility.

4.5. Using forceps, remove the fascia and adipose tissue covering the gastrointestinal tract. Remove the following gastrointestinal tract segments from the abdominal cavity: the duodenum, jejunum, ileum, cecum, ascending and transverse colon (**Figure 1C**).

4.6. To locate the reproductive organs, first identify the urinary bladder (**Figure 1C**, "4"), which

may have a deflated appearance due to voiding after euthanasia. The vagina will be right under the urinary bladder.

4.7. Locate the pubic symphysis at the confluence of the pubic bones (caudally to the bladder).

4.8. Using scissors, remove the pubic symphysis by carefully making incisions on its lateral sides through the interpubic fibrocartilaginous tissue to gain access to and provide a route for vagina extraction (**Figure 1D**).

4.9. Cut through the perineum located between the anus and lower part of the vulva.

4.10. Using forceps, lift the vagina and slowly excise the rectum.

4.11. Identify two uterine horns that bifurcate into a fork, rostrally to the vagina. Locate a convoluted oviduct and ovary at the end of each horn, which may be hidden under the remaining gastrointestinal tract segments. Use small dissecting scissors to remove any ligaments that connect to and support the horns, oviducts, and ovaries within the abdominal cavity.

4.12. Remove the reproductive tract, which includes the vagina, uterus, oviducts, and ovaries, from the abdominal cavity.

4.13. Transfer the isolated reproductive tract (**Figure 1E**) into a 100 mm Petri dish filled with 10 mL of DPBS. Do not compress the uterine horns to avoid damaging the myometrium.

4.14. Use forceps and surgical scissors to remove any connective and adipose tissue surrounding the uterine horns and vagina as well as any fur in the pubic region that could hinder the image quality. Remove the broad ligament to allow motility of the uterine horns.

4.15. Wash the isolated reproductive tract with fresh DPBS two times and transfer it into a 35 mm Petri dish filled with 3 mL of oxygenated Krebs solution.

5. Tissue imaging

5.1. Place the Petri dish containing the reproductive tract in oxygenated Krebs buffer on a black surface. Maintain the dish at room temperature.

NOTE: It is possible to use an infrared warming pad to maintain the tissue at 37 °C.

5.2. Allow 15-30 min for spontaneous contractions to begin. Record spontaneous uterine motility for 10 min from an axial plane using any type of digital video equipment.

5.3. Transfer the preparation into a Petri dish containing the oxygenated Krebs buffer supplemented with a test compound. Record spontaneous uterine motility for about 10 min from an axial plane using any type of digital video equipment.

5.4. Wash the entire reproductive tract in 100 mm Petri dish with 10 mL of DPBS to assess the reversibility of treatment.

5.5. Transfer the preparation into a Petri dish with the freshly oxygenated Krebs buffer. Record spontaneous uterine motility for about 10 min from an axial plane using any type of digital video equipment.

5.6. Transfer the preparation to another 35 mm Petri dish filled with oxygenated Krebs buffer supplemented with the vehicle for the test compound to ensure that there are no mechanically induced changes in spontaneous uterine motility. This is an important control.

5.7. Transfer the video footage to a computer hard drive.

6. Data analysis

6.1. Make clips using any video editing software from the original video footage containing the control, treatment, and wash episodes.

6.2. Use the MATLAB software and the provided script (see online **Supplemental material**) to quantify spontaneous uterine motility.

NOTE: Computer Vision Toolbox add-on for MATLAB must be installed for the script to be fully functional.

6.2.1. Open the MATLAB script, go to the **Editor** tab, and click **Run**.

6.2.2. Select the first video file and click **Open**.

6.2.3. Enter a label for the video file in the pop-up dialog box and click **OK**.

6.2.4. Enter the time interval (s) needed for calculating the rate of horn movement (Δ Euclidean distance / Δs).

6.2.5. Use the mouse cursor to select two points on the first frame of the video. A pop-up window will ask to confirm that the selected points should be used for tracking. Click **Start** to initiate the real time tracking process that will be displayed in the pop-up window. Alternatively, click **Reselect Points** to reselect the two points.

6.2.6. Monitor the accuracy of the tracking process on the pop-up window.

6.2.7. Observe a rate vs. time scatter plot and distance vs. time scatter plot in a new pop-up window. Save the two figures by selecting **File | Save As** in the same window to document the data.

6.2.8. Find a folder named **PointTrackerData**, automatically created by MATLAB, in the same directory where the MATLAB script is located. Identify an Excel file named **label_Data** containing data points collected from the video in two separate worksheet tabs.

NOTE: Any alternative motion tracking software can be used to quantify spontaneous uterus motility.

6.3. Use an appropriate software (e.g., Excel or SigmaPlot 13) to perform the statistical analysis.

REPRESENTATIVE RESULTS:

Figure 1 shows representative images taken during the entire reproductive tract isolation procedure that is described in this protocol. To avoid contaminating the buffer with fur, which would decrease video quality, we moistened the mouse body with 70% ethanol. The major benchmark for the dissection section of the protocol is to find the urinary bladder. The uterus and vagina will be located inferior to the urinary bladder.

To test the protocol, we treated the entire reproductive tract with epinephrine. Epinephrine is well-known to cause uterine smooth muscle relaxation. This hormone is endogenously produced in the adrenal medulla and serves as a stress hormone in mammals. We used 1 μ M epinephrine in our experiments. This is a saturating concentration known to cause maximal response¹². A series of four experiments were performed, with similar results being observed in each trial. **Figure 2** shows tract preparation. However, in this case, the effect was so strong that we could not achieve a successful washout and spontaneous motility did not recover.

To quantify the spontaneous motility of the reproductive tract, we designed an algorithm allowing us to assess the average rate of change in the Euclidean distance between two selected points on the mouse reproductive tract. The point positions are tracked using the motion tracking module of MATLAB software. The corresponding script for MATLAB, which we used to calculate the Euclidean distances, is provided in the **Supplemental material** online. The position of points is critical for a successful motion tracking procedure. Careful consideration should be taken concerning the quality of the videos because the light reflections from the Petri dish's wall may distract the motion tracker, and it may stop tracking the horn movement while re-assigning the point to one of the light reflections. We opted to place one of the points in the middle of a horn to ensure that it was far enough from the Petri dish wall reflections. The second point was usually selected on the vagina since it did not exhibit spontaneous motility. **Figure 3** provides a sample of data analysis, and **Supplemental figure 1** shows the representative images acquired during motion tracking.

FIGURE LEGENDS:

Figure 1: Steps of entire reproductive tract isolation. (A) An incision in the skin was made and the abdominopelvic region was exposed above the peritoneum (1). **(B)** The serous membrane was slowly opened to expose the gastrointestinal tract (2). **(C)** The gastrointestinal tract has been moved to expose the uterine horns (3). The urinary bladder (4) can be visualized near the

conjunction of the horns. **(D)** The uterine horns have been freed and cuts have been made on the lateral sides of the pubic symphysis (5) to expose the vagina (6). **(E)** Removal of the isolated reproductive tract and placement into DPBS solution. Any excess fur or connective tissue was removed. **(F)** A deep indentation can be seen on the vagina (right) after removal of the rectum (left, 7). **(G)** The surrounding connective tissue is removed. A digital camera and Application Suite software (version 3.7.0) was used to acquire real-time images during dissection (camera setting: hue 20/saturation 80).

Figure 2: A representative experiment with the entire isolated reproductive tract is shown. The images were taken 15 s apart before **(A)**, during **(B)**, and after **(C)** the application of 1 μ M epinephrine. The reproductive tract preparation exhibited high motility in panels A and C in the absence of epinephrine, but it is quiescent in panel B with the presence of 1 μ M epinephrine. The unedited video footage is provided as **Supplemental videos 1-3**.

Figure 3: Data analysis in the ex vivo experiment described in Figure 2. (A) A time course of the Euclidean distance change rate is shown. The reference points between which the distance was determined during spontaneous uterine motility are shown as green dots in the inset. The points were selected at the proximal part of the vagina and the middle segment of a uterine horn as depicted. The blue filled circles show the spontaneous motility rate values before adding epinephrine, the red circles show the spontaneous motility rates in the presence of 1 μ M epinephrine, and the green filled circles show the spontaneous motility rates after a washout. **(B)** A comparison of average Euclidean distance change rates (pixels/s) before addition of epinephrine (blue bar), in the presence of 1 μ M epinephrine (red bar), and after a washout (green bar). The MATLAB software was used to quantify the uterine motility. Δt interval was set at 5 s. “ Δ Distance” is calculated as the difference between the initial frame distance and the frame distance 5 s later. The statistical analysis was performed using Kruskal-Wallis One Way Analysis of Variance on Ranks followed by all pairwise multiple comparison procedures according to the Dunn's Method using SigmaPlot 13. The asterisk indicates the data set that was significantly different from the other experimental data sets ($P = <0.001$).

Supplemental movie 1: Time-lapse video clip showing spontaneous uterine motility before adding 1 μ M epinephrine.

Supplemental movie 2: Time-lapse video clip showing spontaneous uterine motility when the Krebs buffer was supplemented with 1 μ M epinephrine.

Supplemental movie 3: Time-lapse video clip showing spontaneous uterine motility after washout.

Supplemental figure 1: Representative images taken every 15 s during motion tracking.

Supplemental material: The MATLAB-based tracking algorithm script.

DISCUSSION:

Here, we described a method for assessing spontaneous contractility of the entire rodent reproductive tract, which includes the ovaries, oviducts, uterine horns, and the vagina. We used a similar method to demonstrate the relaxant effect of phenylephrine on spontaneous uterine motility¹³, however, in the past we were unable to provide quantitative analysis of the data. In this work, we developed an algorithm for quantitative motility data analysis using the MATLAB motion tracking module. This is a useful technique for testing new drugs that regulate uterine contractility regardless of whether the drugs relax or constrict uterine smooth muscles. A major advantage of this model is that the reproductive tract is intact, preserving all intrinsic intrauterine cellular interactions. Notably, this protocol does not require any special equipment. The uterus isolation can be done with a simple magnifying glass and there is no requirement for any sophisticated video recording equipment. If a high-resolution digital camera is not available for imaging, a personal mobile phone camera may be used as an alternative.

The most critical step of the protocol for assessing reproductive tract motility is to obtain viable uterine tissue. The myometrium, within the uterine horns, is the motile element of the reproductive tract. Therefore, during isolation it is important to avoid overstretching or compressing the horns. It is also important to ensure that the uterine tissue is well-oxygenated throughout the experiment to maintain uterine motility. The best way to prevent any damage to the uterine horns is to make contact with only the adjacent connective tissue while cleaning the uterus or moving the reproductive tract. Since the vagina does not contract spontaneously during the experiment, it is acceptable to compress it with the forceps when moving the reproductive tract from one dish to another. The entire reproductive tract experiments may be performed in conjunction with isometric tension recordings that assess preload- and/or oxytocin-induced uterine contractility. However, a wire myograph is an expensive piece of equipment that is not always available in a common laboratory environment.

The described method has several limitations. Since the myometrium is very sensitive to compressions or pulls, this complicates the dissection process of the reproductive tract. If the horns are damaged during dissection, no spontaneous contractility will be observed. This is a major limitation of the protocol because it is uncertain whether the contractile smooth muscle cells were unknowingly damaged despite the use of proper care and caution or whether they lacked motility due to a natural cause. Indeed, we observed no motility in 10-20% of the reproductive tract preparations in this study. It is important to ensure that the vaginal segment of the reproductive tract remains intact because removal of the vagina markedly decreases spontaneous motility of the uterine horns. In contrast, the absence of ovaries and/or oviducts does not impair the entire reproductive tract motility. In addition, one should note that some compounds are sensitive to oxidation. For example, epinephrine can be easily oxidized. Testing the effects of such compounds would require shorter incubation time preventing excessive oxidation. However, shorter incubation times may hinder the ability of a drug to efficiently penetrate the thickness of the uterine wall. A further limitation of the method includes assessing the 3-dimensional movements of the horns. The horns have an innate nature of curling into a 3-dimensional plane, complicating analysis. To overcome this problem, one may decrease the Krebs buffer volume in the Petri dish to 2 mL.

We found that the optimum age range for female mice is 2-5 months. We indicated that anesthesia with isoflurane may result in reduced motility and additional washes may be necessary to prevent this isoflurane-induced complication. Alternatively, one can use carbon dioxide to euthanize mice. If difficulties arise during dissection, focus on landmarks, such as the urinary bladder, may help. To quantify the obtained motility data, we used MATLAB software. The major problem with motion tracking in MATLAB was that the tracker was unable to properly locate the horns when they moved near the wall of the Petri dish. Adobe Premier Element was used to clip the video footage and to reduce the size of video files. Although it is an outstanding software package, it may not always be available in a typical laboratory setting. An alternative option may be to use the free motion tracking module of ImageJ software or even simple manual assessment of images taken with identical intervals and comparing the position of the uterine horns on a segmentation grid. **Figure 2** shows an example of simple assessment of the spontaneous uterine motility and includes a comparison of reproductive tract movements within a 15 s interval.

No simple method assessing uterine motility in a Petri dish setting has been reported thus far. Ultrasound and intrauterine pressure sensors can be used to monitor human uterus contractility¹⁴. However, it is difficult to study underlying mechanisms in the intact human uterus. Therefore, the use of animal models for investigating spontaneous uterine contractility is important. The female reproductive tract exhibits spontaneous myometrial contractions that are critical for a woman's well-being, including her fertility and labor¹⁵. These contractions can be visualized as endometrial waves during an ultrasound examination. However, during menstruation, over contractility of the uterus can create discomfort and lead to dysmenorrhea, or menstrual cramps. To help relieve some symptoms of dysmenorrhea, new drugs targeted at relaxing uterine smooth muscles are needed. Our simple method provides a way for assessing the effects of various compounds on uterine contractility.

In this study, we used our easy Petri dish model to confirm the effectiveness of epinephrine, a uterine relaxant hormone¹², to prevent spontaneous uterine motility of isolated mouse reproductive tracts. Our method may also be used for testing such compounds that may increase the contractility of the uterus. Importantly, this method might have the potential to be upgraded for throughput drug screening using a six-well plate format. Thus, the method we present here may have the capability to be optimized for industrial scale screening procedures. We did not attempt to perform similar experiments in larger rodents, but we expect that similar spontaneous motility will be present in isolated rat uteri. The larger reproductive tract of rats may exhibit more pronounced uterine motility. We found that pregnant mouse uteri may also be assessed using this ex vivo uterine motility Petri dish model. As expected, the spontaneous motility of the pregnant uterus was reduced because it is in a quiescent state. However, increased weight added by the fetal tissue may also contribute to motility obstruction. It may still be beneficial to further explore the suitability of this entire reproductive tract model to assess the effect of tocolytic (relaxant) or uterotonic (stimulant) compounds in the context of pregnancy and labor. Thus, here we presented an easy ex vivo model for assessing the spontaneous motility of the intact reproductive tract. This approach may be adopted for drug screening and be utilized for novel drug discovery.

ACKNOWLEDGMENTS:

This work was supported by internal IU funds. AGO conceived the study. XC and AGO were involved in the design of the described experiments. FL and AGO analyzed and interpreted the data. KLL, JOB, FL performed all of the *ex vivo* experiments. FL wrote the MATLAB script. KLL, JOB, and AGO wrote the manuscript. All authors read and approved the final version of the manuscript.

DISCLOSURES:

The authors have nothing to disclose.

REFERENCES:

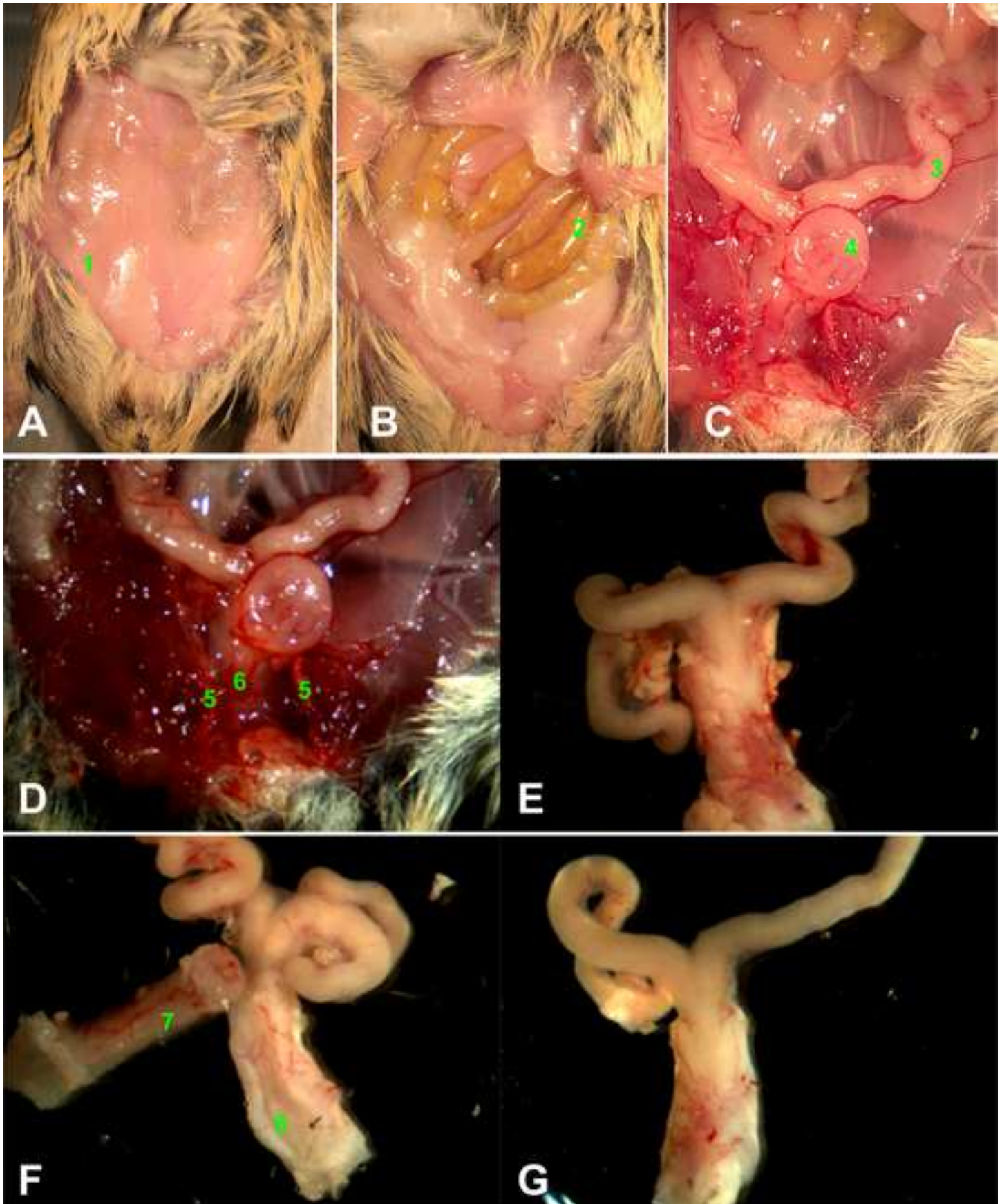
1. Kuijsters,N.P.M., *et al.* Uterine peristalsis and fertility: current knowledge and future perspectives: a review and meta-analysis. *Reproductive BioMedicine Online*. **35** (1), 50-71, doi: 10.1016/j.rbmo.2017.03.019 (2017).
2. Kural,M., Noor,N.N., Pandit,D., Joshi,T., & Patil,A. Menstrual characteristics and prevalence of dysmenorrhea in college going girls. *Journal of Family Medicine and Primary Care*. **4** (3), 426-431, doi: 10.4103/2249-4863.161345 (2015).
3. Dehnavi,Z.M., Jafarnejad,F., & Kamali,Z. The Effect of aerobic exercise on primary dysmenorrhea: A clinical trial study. *Journal of education and health promotion*. **7**, 3, doi: 10.4103/jehp.jehp_79_17 (2018).
4. Lindner,H.R., *et al.* Significance of prostaglandins in the regulation of cyclic events in the ovary and uterus. *Advances in prostaglandin and thromboxane research*. **8**, 1371-1390 (1980).
5. Bernardi,M., Lazzeri,L., Perelli,F., Reis,F.M., & Petraglia,F. Dysmenorrhea and related disorders. *F1000 research*. **6**, 1645, doi: 10.12688/f1000research.11682.1 (2017).
6. Marjoribanks,J., Ayeleke,R.O., Farquhar,C., & Proctor,M. Nonsteroidal anti-inflammatory drugs for dysmenorrhoea. *The Cochrane database of systematic reviews*. **7**, CD001751, doi: 10.1002/14651858.CD001751.pub3 (2015).
7. Oladosu,F.A., *et al.* Abdominal skeletal muscle activity precedes spontaneous menstrual cramping pain in primary dysmenorrhea. *American journal of obstetrics and gynecology*. **219** (1), 91, doi: 10.1016/j.ajog.2018.04.050 (2018).
8. Lawson,C.C., *et al.* Occupational exposures among nurses and risk of spontaneous abortion. *American journal of obstetrics and gynecology*. **206** (4), 327-328, doi: 10.1016/j.ajog.2011.12.030 (2012).
9. Mazze,R.I., Wilson,A.I., Rice,S.A., & Baden,J.M. Fetal development in mice exposed to isoflurane. *Teratology*. **32** (3), 339-345, doi: 10.1002/tera.1420320303 (1985).
10. Byers,S.L., Wiles,M.V., Dunn,S.L., & Taft,R.A. Mouse estrous cycle identification tool and images. *PLoS One*. **7** (4), e35538, doi: 10.1371/journal.pone.0035538 (2012).
11. Caligioni,C.S. Assessing reproductive status/stages in mice. *Current protocols in neuroscience*. **Appendix 4**, Appendix, doi: 10.1002/0471142301.nsa04is48 (2009).
12. Segal,S., Csavoy,A.N., & Datta,S. The tocolytic effect of catecholamines in the gravid rat uterus. *Anesthesia and analgesia*. **87** (4), 864-869 (1998).
13. Chen,X., *et al.* Phenylephrine, a common cold remedy active ingredient, suppresses uterine

contractions through cAMP signalling. *Scientific reports*. **8** (1), 11666, doi: 10.1038/s41598-018-30094-5 (2018).

14. Domino,M., Pawlinski,B., & Gajewski,Z. Biomathematical pattern of EMG signal propagation in smooth muscle of the non-pregnant porcine uterus. *PLoS One*. **12** (3), e0173452, doi: 10.1371/journal.pone.0173452 (2017).

15. Crane,L.H. & Martin,L. Pace-maker activity in the myometrium of the oestrous rat: in vivo studies using video-laparoscopy. *Reproduction, fertility, and development*. **3** (5), 519-527 (1991).

Figure 1



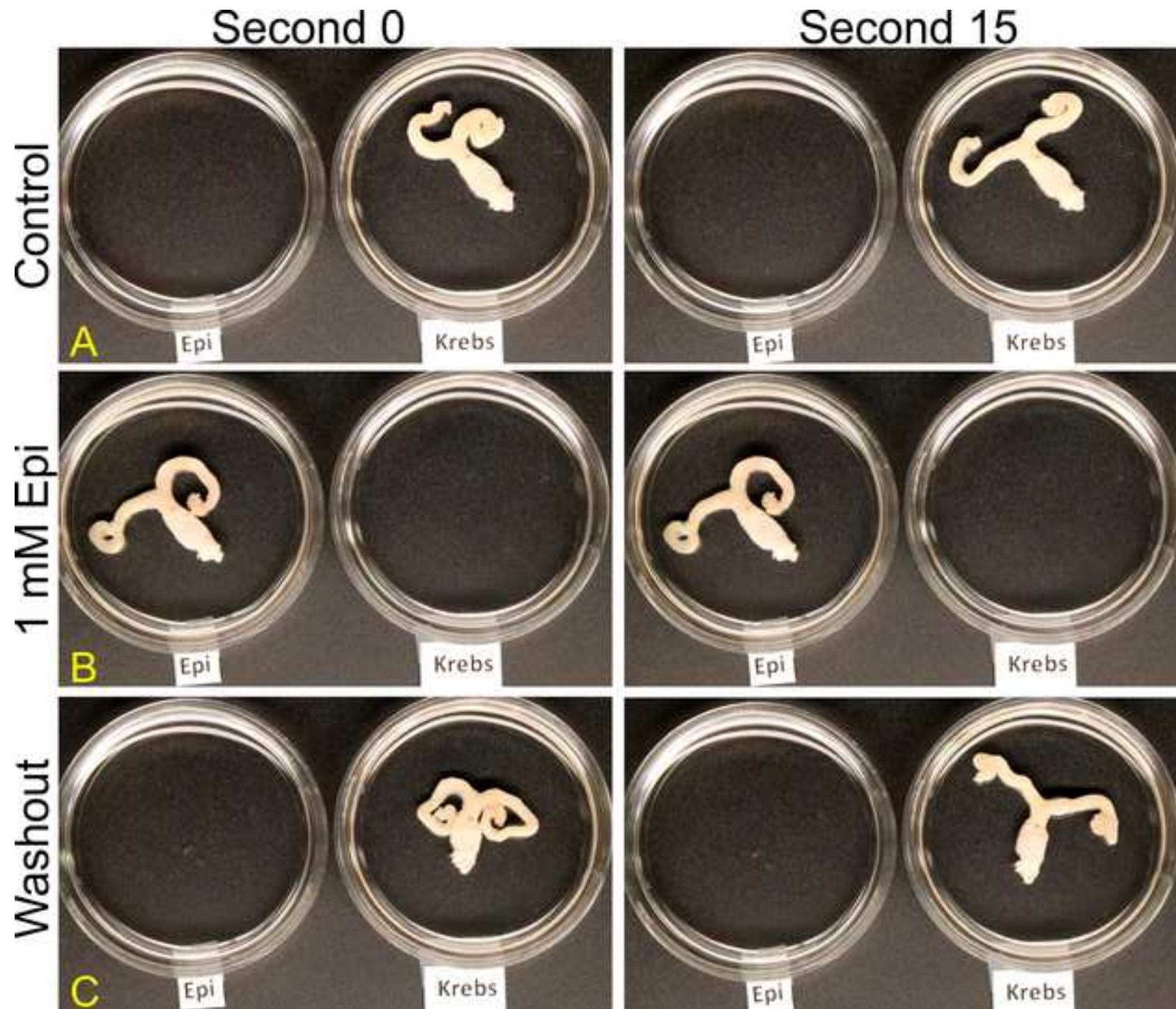
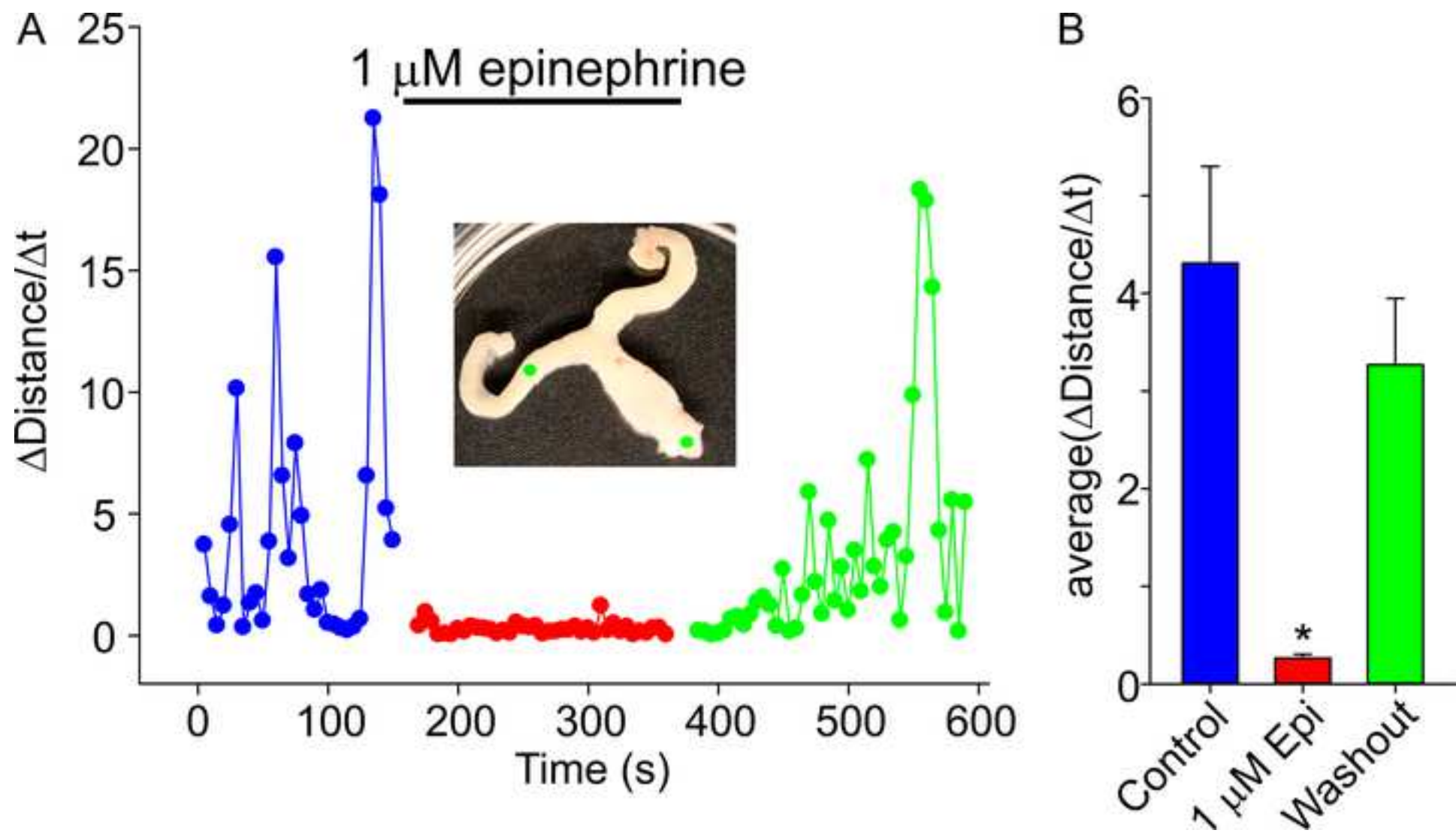
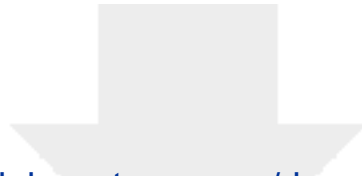


Figure 3

[Click here to access/download;Figure;Figure 3 _ analysis isometric tension_R1.tif](#)

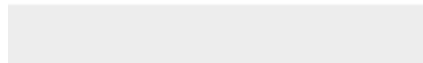




[Click here to access/download](#)

Video or Animated Figure

MVI_5409_Control_640x380resolution.mp4





[Click here to access/download](#)

Video or Animated Figure

MVI_5409_1uMEpi_640x380resolution.mp4





[Click here to access/download](#)

Video or Animated Figure

MVI_5409_wash_640x360resolution.mp4



Name of Material/ Equipment	Company	Catalog Number
Epinephrine hydrochloride	Sigma-Aldrich	E4642
Dulbecco's PBS	Fisher Scientific	17-512Q
Ethanol 200 PROOF	Decon Laboratories	2701
NaCl	Sigma-Aldrich	S7653
Glucose	Sigma-Aldrich	G7528
KCl	Sigma-Aldrich	P9333
$\text{CaCl}_2 \cdot 2\text{H}_2\text{O}$	Sigma-Aldrich	C5080
NaH_2PO_4	Sigma-Aldrich	S0751
$\text{MgCl}_2 \cdot 6\text{H}_2\text{O}$	Sigma-Aldrich	M9272
NaHCO_3	Sigma-Aldrich	S6297
Isoflurane, USP	Patterson Veterinary	07-893-2374
Dissecting Extra-Fine-Pointed Precision Splinter Forceps	Fisher Scientific	13-812-42
Curved Hardened Fine Iris Scissors	Fine Science Tools	14091-09
Dissection High-performance Modular Stereomicroscope	Leica	MZ6
Digital 5 Megapixel Color Microscope Camera with active cooling system	Leica	DFC425 C
Stereomaster Microscope Fiber-Optic Light Sources	Fisher Scientific	12-562-21
Weigh Boat	Fisher Scientific	WB30304
Convertors Astound Standard Surgical Gown	Cardinal Health	9515
Gloves	McKesson Corporation	20-1080
Petri Dish	Corning Falcon	351029
Petri Dish	Corning Falcon	353001
95% O_2 - 5% CO_2 gas mixture	Praxair	MM OXCD5-K

Ear-loop Masks	Valumax International	5430E-PP
DSLR 24.2 MP Camera	Canon	EOS Rebel T6i
MATLAB	MathWorks	N/A

version 2019 or later

ARTICLE AND VIDEO LICENSE AGREEMENT

Title of Article:	Ex Vivo Method for Assessing Spontaneous Motility of the Isolated Entire Mouse Reproductive Tract and a MATLAB-based uterus motion tracking algorithm for data analysis.
Author(s):	Kaley L. Liang, Julia O. Bursova, Frank Lam, Xingjuan Chen, Alexander G. Obukhov

Item 1: The Author elects to have the Materials be made available (as described at <http://www.jove.com/publish>) via:

☒ Standard Access ☐ Open Access

Item 2: Please select one of the following items:

- ☒ The Author is **NOT** a United States government employee.
- ☐ The Author is a United States government employee and the Materials were prepared in the course of his or her duties as a United States government employee.
- ☐ The Author is a United States government employee but the Materials were NOT prepared in the course of his or her duties as a United States government employee.

ARTICLE AND VIDEO LICENSE AGREEMENT

1. **Defined Terms.** As used in this Article and Video License Agreement, the following terms shall have the following meanings: **"Agreement"** means this Article and Video License Agreement; **"Article"** means the article specified on the last page of this Agreement, including any associated materials such as texts, figures, tables, artwork, abstracts, or summaries contained therein; **"Author"** means the author who is a signatory to this Agreement; **"Collective Work"** means a work, such as a periodical issue, anthology or encyclopedia, in which the Materials in their entirety in unmodified form, along with a number of other contributions, constituting separate and independent works in themselves, are assembled into a collective whole; **"CRC License"** means the Creative Commons Attribution-Non Commercial-No Derivs 3.0 Unported Agreement, the terms and conditions of which can be found at: <http://creativecommons.org/licenses/by-nc-nd/3.0/legalcode>; **"Derivative Work"** means a work based upon the Materials or upon the Materials and other pre-existing works, such as a translation, musical arrangement, dramatization, fictionalization, motion picture version, sound recording, art reproduction, abridgment, condensation, or any other form in which the Materials may be recast, transformed, or adapted; **"Institution"** means the institution, listed on the last page of this Agreement, by which the Author was employed at the time of the creation of the Materials; **"JoVE"** means MyJoVE Corporation, a Massachusetts corporation and the publisher of The Journal of Visualized Experiments; **"Materials"** means the Article and / or the Video; **"Parties"** means the Author and JoVE; **"Video"** means any video(s) made by the Author, alone or in conjunction with any other parties, or by JoVE or its affiliates or agents, individually or in collaboration with the Author or any other parties, incorporating all or any portion

of the Article, and in which the Author may or may not appear.

2. **Background.** The Author, who is the author of the Article, in order to ensure the dissemination and protection of the Article, desires to have the JoVE publish the Article and create and transmit videos based on the Article. In furtherance of such goals, the Parties desire to memorialize in this Agreement the respective rights of each Party in and to the Article and the Video.

3. **Grant of Rights in Article.** In consideration of JoVE agreeing to publish the Article, the Author hereby grants to JoVE, subject to **Sections 4** and **7** below, the exclusive, royalty-free, perpetual (for the full term of copyright in the Article, including any extensions thereto) license (a) to publish, reproduce, distribute, display and store the Article in all forms, formats and media whether now known or hereafter developed (including without limitation in print, digital and electronic form) throughout the world, (b) to translate the Article into other languages, create adaptations, summaries or extracts of the Article or other Derivative Works (including, without limitation, the Video) or Collective Works based on all or any portion of the Article and exercise all of the rights set forth in (a) above in such translations, adaptations, summaries, extracts, Derivative Works or Collective Works and (c) to license others to do any or all of the above. The foregoing rights may be exercised in all media and formats, whether now known or hereafter devised, and include the right to make such modifications as are technically necessary to exercise the rights in other media and formats. If the "Open Access" box has been checked in **Item 1** above, JoVE and the Author hereby grant to the public all such rights in the Article as provided in, but subject to all limitations and requirements set forth in, the CRC License.

ARTICLE AND VIDEO LICENSE AGREEMENT

4. **Retention of Rights in Article.** Notwithstanding the exclusive license granted to JoVE in **Section 3** above, the Author shall, with respect to the Article, retain the non-exclusive right to use all or part of the Article for the non-commercial purpose of giving lectures, presentations or teaching classes, and to post a copy of the Article on the Institution's website or the Author's personal website, in each case provided that a link to the Article on the JoVE website is provided and notice of JoVE's copyright in the Article is included. All non-copyright intellectual property rights in and to the Article, such as patent rights, shall remain with the Author.

5. **Grant of Rights in Video – Standard Access.** This **Section 5** applies if the "Standard Access" box has been checked in **Item 1** above or if no box has been checked in **Item 1** above. In consideration of JoVE agreeing to produce, display or otherwise assist with the Video, the Author hereby acknowledges and agrees that, Subject to **Section 7** below, JoVE is and shall be the sole and exclusive owner of all rights of any nature, including, without limitation, all copyrights, in and to the Video. To the extent that, by law, the Author is deemed, now or at any time in the future, to have any rights of any nature in or to the Video, the Author hereby disclaims all such rights and transfers all such rights to JoVE.

6. **Grant of Rights in Video – Open Access.** This **Section 6** applies only if the "Open Access" box has been checked in **Item 1** above. In consideration of JoVE agreeing to produce, display or otherwise assist with the Video, the Author hereby grants to JoVE, subject to **Section 7** below, the exclusive, royalty-free, perpetual (for the full term of copyright in the Article, including any extensions thereto) license (a) to publish, reproduce, distribute, display and store the Video in all forms, formats and media whether now known or hereafter developed (including without limitation in print, digital and electronic form) throughout the world, (b) to translate the Video into other languages, create adaptations, summaries or extracts of the Video or other Derivative Works or Collective Works based on all or any portion of the Video and exercise all of the rights set forth in (a) above in such translations, adaptations, summaries, extracts, Derivative Works or Collective Works and (c) to license others to do any or all of the above. The foregoing rights may be exercised in all media and formats, whether now known or hereafter devised, and include the right to make such modifications as are technically necessary to exercise the rights in other media and formats. For any Video to which this **Section 6** is applicable, JoVE and the Author hereby grant to the public all such rights in the Video as provided in, but subject to all limitations and requirements set forth in, the CRC License.

7. **Government Employees.** If the Author is a United States government employee and the Article was prepared in the course of his or her duties as a United States government employee, as indicated in **Item 2** above, and any of the licenses or grants granted by the Author hereunder exceed the scope of the 17 U.S.C. 403, then the rights granted hereunder shall be limited to the maximum

rights permitted under such statute. In such case, all provisions contained herein that are not in conflict with such statute shall remain in full force and effect, and all provisions contained herein that do so conflict shall be deemed to be amended so as to provide to JoVE the maximum rights permissible within such statute.

8. **Protection of the Work.** The Author(s) authorize JoVE to take steps in the Author(s) name and on their behalf if JoVE believes some third party could be infringing or might infringe the copyright of either the Author's Article and/or Video.

9. **Likeness, Privacy, Personality.** The Author hereby grants JoVE the right to use the Author's name, voice, likeness, picture, photograph, image, biography and performance in any way, commercial or otherwise, in connection with the Materials and the sale, promotion and distribution thereof. The Author hereby waives any and all rights he or she may have, relating to his or her appearance in the Video or otherwise relating to the Materials, under all applicable privacy, likeness, personality or similar laws.

10. **Author Warranties.** The Author represents and warrants that the Article is original, that it has not been published, that the copyright interest is owned by the Author (or, if more than one author is listed at the beginning of this Agreement, by such authors collectively) and has not been assigned, licensed, or otherwise transferred to any other party. The Author represents and warrants that the author(s) listed at the top of this Agreement are the only authors of the Materials. If more than one author is listed at the top of this Agreement and if any such author has not entered into a separate Article and Video License Agreement with JoVE relating to the Materials, the Author represents and warrants that the Author has been authorized by each of the other such authors to execute this Agreement on his or her behalf and to bind him or her with respect to the terms of this Agreement as if each of them had been a party hereto as an Author. The Author warrants that the use, reproduction, distribution, public or private performance or display, and/or modification of all or any portion of the Materials does not and will not violate, infringe and/or misappropriate the patent, trademark, intellectual property or other rights of any third party. The Author represents and warrants that it has and will continue to comply with all government, institutional and other regulations, including, without limitation all institutional, laboratory, hospital, ethical, human and animal treatment, privacy, and all other rules, regulations, laws, procedures or guidelines, applicable to the Materials, and that all research involving human and animal subjects has been approved by the Author's relevant institutional review board.

11. **JoVE Discretion.** If the Author requests the assistance of JoVE in producing the Video in the Author's facility, the Author shall ensure that the presence of JoVE employees, agents or independent contractors is in accordance with the relevant regulations of the Author's institution. If more than one author is listed at the beginning of this Agreement, JoVE may, in its sole

ARTICLE AND VIDEO LICENSE AGREEMENT

discretion, elect not take any action with respect to the Article until such time as it has received complete, executed Article and Video License Agreements from each such author. JoVE reserves the right, in its absolute and sole discretion and without giving any reason therefore, to accept or decline any work submitted to JoVE. JoVE and its employees, agents and independent contractors shall have full, unfettered access to the facilities of the Author or of the Author's institution as necessary to make the Video, whether actually published or not. JoVE has sole discretion as to the method of making and publishing the Materials, including, without limitation, to all decisions regarding editing, lighting, filming, timing of publication, if any, length, quality, content and the like.

12. **Indemnification.** The Author agrees to indemnify JoVE and/or its successors and assigns from and against any and all claims, costs, and expenses, including attorney's fees, arising out of any breach of any warranty or other representations contained herein. The Author further agrees to indemnify and hold harmless JoVE from and against any and all claims, costs, and expenses, including attorney's fees, resulting from the breach by the Author of any representation or warranty contained herein or from allegations or instances of violation of intellectual property rights, damage to the Author's or the Author's institution's facilities, fraud, libel, defamation, research, equipment, experiments, property damage, personal injury, violations of institutional, laboratory, hospital, ethical, human and animal treatment, privacy or other rules, regulations, laws, procedures or guidelines, liabilities and other losses or damages related in any way to the submission of work to JoVE, making of videos by JoVE, or publication in JoVE or elsewhere by JoVE. The Author shall be responsible for, and shall hold JoVE harmless from, damages caused by lack of sterilization, lack of cleanliness or by contamination due to

the making of a video by JoVE its employees, agents or independent contractors. All sterilization, cleanliness or decontamination procedures shall be solely the responsibility of the Author and shall be undertaken at the Author's expense. All indemnifications provided herein shall include JoVE's attorney's fees and costs related to said losses or damages. Such indemnification and holding harmless shall include such losses or damages incurred by, or in connection with, acts or omissions of JoVE, its employees, agents or independent contractors.

13. **Fees.** To cover the cost incurred for publication, JoVE must receive payment before production and publication the Materials. Payment is due in 21 days of invoice. Should the Materials not be published due to an editorial or production decision, these funds will be returned to the Author. Withdrawal by the Author of any submitted Materials after final peer review approval will result in a US\$1,200 fee to cover pre-production expenses incurred by JoVE. If payment is not received by the completion of filming, production and publication of the Materials will be suspended until payment is received.

14. **Transfer, Governing Law.** This Agreement may be assigned by JoVE and shall inure to the benefits of any of JoVE's successors and assignees. This Agreement shall be governed and construed by the internal laws of the Commonwealth of Massachusetts without giving effect to any conflict of law provision thereunder. This Agreement may be executed in counterparts, each of which shall be deemed an original, but all of which together shall be deemed to be one and the same agreement. A signed copy of this Agreement delivered by facsimile, e-mail or other means of electronic transmission shall be deemed to have the same legal effect as delivery of an original signed copy of this Agreement.

A signed copy of this document must be sent with all new submissions. Only one Agreement is required per submission.

CORRESPONDING AUTHOR

Name:	Alexander G. Obukhov		
Department:	Cellular and Integrative Physiology		
Institution:	Indiana University School of Medicine		
Title:	Associate Professor		
Signature:	Alexander G. Obukhov, PhD <small>Digitally signed by Alexander G. Obukhov, PhD DN: cn=Alexander G. Obukhov, PhD, o=Indiana University School of Medicine, ou=Department of Cellular and Integrative Physiology, email=aoobukhov@iui.edu, c=US Date: 2019.02.14 14:30:01 -05'00'</small>	Date:	2/14/2019

Please submit a **signed** and **dated** copy of this license by one of the following three methods:

1. Upload an electronic version on the JoVE submission site
2. Fax the document to +1.866.381.2236
3. Mail the document to JoVE / Attn: JoVE Editorial / 1 Alewife Center #200 / Cambridge, MA 02140

Point by point response to the Editorial comments

We thank the Editorial team for working on the manuscript.

Comment 1: *“Please take this opportunity to thoroughly proofread the manuscript to ensure that there are no spelling or grammar issues.”*

Response: We thoroughly proofread the manuscript.

Comment 2: *“There is a 2.75 page limit for filmable content. Please highlight 2.75 pages or less of the Protocol steps (including headings and spacing) in yellow that identifies the essential steps of the protocol for the video, i.e., the steps that should be visualized to tell the most cohesive story of the Protocol.”*

Response: The filmable content is highlighted in yellow in the track-changes version of the revised manuscript.

Comment 3: *“Please define all abbreviations before use, e.g., DPBS, etc.”*

Response: We checked to ensure that the abbreviations are defined before usage.

Comment 4: *“Please avoid long steps/notes (more than 4 lines).”*

Response: We revised the manuscript to ensure that neither steps/notes exceed a limit of four lines per a step/note.



TITLE:

Ex Vivo Method for Assessing the Mouse Reproductive Tract Spontaneous Motility and a MATLAB-based Uterus Motion Tracking Algorithm for Data Analysis

AUTHORS & AFFILIATIONS:

Kaley L. Liang^{1,2}, Julia O. Bursova^{1,2}, Frank Lam¹, Xingjuan Chen¹, Alexander G. Obukhov¹

¹*The Department of Cellular and Integrative Physiology, Indiana University School of Medicine, Indianapolis, IN, USA*

²These two authors equally contributed to this work.

Corresponding Author:

Alexander G. Obukhov

Email Address: aobukhov@iu.edu

KEYWORDS:

Uterus, Spontaneous uterine motility, Epinephrine, Reproductive tract, Mice, *Ex vivo* model

SHORT ABSTRACT:

Uterine contractions are important for the well-being of females. However, pathologically increased contractility may result in dysmenorrhea, especially in younger females. Here, we describe a simple *ex vivo* preparation allowing quick assessment of the efficacy of smooth muscle relaxants that may be used for treating dysmenorrhea.

LONG ABSTRACT:

Dysmenorrhea, or painful cramping, is the most common symptom associated with menses in females and its severity can hinder women's everyday lives. Here, we present an easy and inexpensive method that would be instrumental for testing new drugs decreasing uterine contractility. This method utilizes the unique ability of the entire mouse reproductive tract to exhibit spontaneous motility when maintained *ex vivo* in a Petri dish containing oxygenated Krebs buffer. This spontaneous motility resembles the wave-like myometrial activity of the human uterus, referred to as endometrial waves. To demonstrate the effectiveness of the method, we employed a well-known uterine relaxant drug, epinephrine. We demonstrate that the spontaneous motility of the entire mouse reproductive tract can be quickly and reversibly inhibited by 1 μ M epinephrine in this Petri dish model. Documenting the changes of uterine motility can be easily done using an ordinary smart phone or a sophisticated digital camera. We developed a MATLAB-based algorithm allowing motion tracking to quantify spontaneous uterine motility changes by measuring the rate of uterine horn movements. A major advantage of this *ex vivo* approach is that the reproductive tract remains intact throughout the entire experiment, preserving all intrinsic intrauterine cellular interactions. The major limitation of this approach is that up to 10-20% of uteri may exhibit no spontaneous motility. Thus far, this is the first quantitative *ex vivo* method for assessing spontaneous uterine motility in a Petri dish model.

INTRODUCTION:

As a major female organ, the uterus is crucial for reproduction and essential for the nourishment of the fetus¹. The uterus consists of three layers: the perimetrium, myometrium and endometrium. The myometrium is the major contractile layer of the uterus and plays a key role in fetus delivery. The endometrium is the innermost layer lining the uterine cavity and is essential for embryo implantation. In non-pregnant females of reproductive age, the endometrial layer is shed monthly at the beginning of the menstrual cycle. The myometrium aids in this shedding process by maintaining the spontaneous myometrial contractions needed for clearing the necrotic endometrial tissue from the uterus¹.

Unfortunately, increased myometrial contractility can result in negative side effects such as dysmenorrhea, or painful menstrual cramps. This is especially seen in young females and nulliparous women². However, dysmenorrhea is different for every woman and depends on the strength of their myometrial contractions; stronger contractions are often associated with the sensation of severe cramping³. Myometrial contractility can be visualized using uterine ultrasound and is often recognized as endometrial waves. Enhanced release of prostaglandins during menstruation⁴ in a uterus undergoing endometrial sloughing is believed to contribute to increased myometrial hypercontractility, resulting in ischemia and hypoxia of the uterine muscle and thus increased pain³.

Dysmenorrhea can be so severe it hinders the day-to-day activity of some women and is the leading cause of gynecological morbidity in women of reproductive age regardless of age, nationality, and economic status⁵. The estimated prevalence of dysmenorrhea is both high and variable, ranging from 45% to 93% in women of reproductive age⁵. Some women (3 to 33%) have very severe pain, severe enough to cause a woman to be bedridden for 1 to 3 days each menstrual cycle⁵. Dysmenorrhea-associated pain has an effect on the daily life of women and may result in poor academic performance in adolescents, lower quality of sleep, restriction of daily activities, and mood changes⁵.

Many women who experience severe dysmenorrhea resort to over-the-counter medications to relieve their pain. Such over-the-counter medications contain cyclooxygenase (COX) inhibitors which prevent the formation of prostaglandins⁶. However, COX inhibitors are associated with adverse cardiovascular events, and about 18% of women with dysmenorrhea are unresponsive to these inhibitors⁷. Therefore, there is a need for new medications to reduce menstrual cramps. Since over contractility of the uterus contributes to the pathogenesis of dysmenorrhea, one possible strategy may be the usage of uterine relaxants.

It is beneficial to quantify the effects of potential relaxant drugs in a model of naturally occurring spontaneous myometrial wave-like contractions. However, thus far, no efficient *ex vivo* method for testing muscle-relaxing drugs in the intact uterus has been described. Currently, isometric tension measurements are used to evaluate relaxant drug effects. During such measurements, a uterine muscle strip is maintained at a constant length under preload in a tissue bath while the force of uterine muscle contractions is recorded before and after oxytocin stimulation in the

presence or absence of a relaxant drug. Although this approach is very useful, it requires expensive equipment. Furthermore, isometric contractions do not resemble the spontaneous myometrial wave-like contractions that naturally occur in the intact uterus. Uniquely, the uterine myometrial waves in rodents can be visualized as uterine horn motility when the entire reproductive tract (ovaries, oviducts, uterus, and vagina) is maintained in a buffer solution. Here we present an *ex vivo* method for monitoring the spontaneous motility of the intact mouse uterus placed in a Petri dish containing oxygenated Krebs buffer. We also describe a motility quantification algorithm utilizing the MATLAB (MathWorks, Natick, MA) motion tracker. This novel approach provides an easy and less expensive alternative to test the relaxant potential of naturally occurring remedies and synthetic compounds.

PROTOCOL:

All procedures with animals have been approved by the Institutional Animal Care and Use Committee at the Indiana University School of Medicine (Indianapolis, IN). 2-5 month-old F2-129S-C57BL/6 sexually-mature female mice were used in the study.

CAUTION: Ensure safety by wearing a lab coat, mask, and gloves when working with animals and biohazardous materials.

1. Solutions

1.1. Prepare the Krebs Buffer, which contains: 130 mM NaCl, 5 mM KCl, 2 mM CaCl₂, 1.2 mM NaH₂PO₄, 0.56 mM MgCl₂, 25 mM NaHCO₃, and 5 mM glucose, pH 7.4.

1.1.1. Continuously oxygenate the Krebs buffer with a mixture of compressed gases containing 5% CO₂ and 95% O₂ while maintaining the buffer temperature at 37 °C using a circulating water bath.

1.2. Prepare Dulbecco's Phosphate-Buffered Saline (DPBS), which contains: 2.68 mM KCl, 1.47 mM KH₂PO₄, 136.89 mM NaCl, 8.1 mM Na₂HPO₄, pH 7.4.

2. Animal Preparation

2.1. Anesthetize mice using inhalation of isoflurane (3%) with waste gas scavenging. Ensure adequate anesthesia by assessing withdrawal reflexes. Pinch the rear toe to affirm no movements are elicited, indicating loss of reflex responses. After the deep anesthesia is achieved, euthanize animal by decapitation.

2.2. Place the body on a large weigh boat lined with a paper towel.

NOTE: Isoflurane may cause smooth muscle dilation. Therefore, the reproductive tract preparation should be extensively washed and incubated in the Krebs buffer for at least 15-30 min before beginning the *ex vivo* experiments. Isoflurane may cause irritation and discomfort when it is in contact with the skin, so proceed with caution.

NOTE: Pregnant female laboratory personnel should not be involved in experiments with isoflurane because it can decrease fetal weight, decrease fetal skeletal ossification, and increase the risk of spontaneous abortion^{8,9}.

Note: CO₂ inhalation can be used as a substitute to euthanize mice.

3. Determination of Estrous Cycle Stage

3.1. With small forceps, lift the clitoris to gain access to the vaginal ostium and slowly insert a micropipette tip containing 10 µL of DPBS into the vagina.

3.1.1. Ensure the micropipette tip is inserted through the ostium at an angle of 10 - 30° to avoid puncturing the vaginal wall. The liquid should still be visible in the tip after insertion. If the liquid is not visible, the tip was inserted too far into the vagina, and the paracervical area of the vagina might have been perforated.

3.1.2. Lightly pull down on the vaginal ostium muscles with the tip of the micropipette to allow air to exit from the vagina.

3.2. Slowly flush the vaginal cavity by pipetting up and down 2-3 times with 10 µL DPBS and place the drawn cell suspension on a glass slide.

3.3. Use an Inverted Phase Contrast Microscope to determine the estrous cycle stage through cytologic analysis. The procedure is done as described elsewhere^{10,11}. Ensure the cell suspension does not dry out before cytologic analysis can be performed. The suspension may be diluted with fresh DPBS, if necessary.

4. Mouse Reproductive Tract Dissection

4.1. Arrange the mouse in a supine position and spread its extremities to expose the abdominopelvic region.

4.2. Spray with 70% ethanol to moisten and disinfect the abdominopelvic area.

4.3. Using forceps, carefully lift the skin located superior to the clitoris. Make small transverse incisions on the lateral aspects of the lower abdominal area, up to the upper extremities to expose the peritoneum (**Figure 1A**). During this process, an external flap will form. As small incisions are continually made, the flap will increase in size.

4.4. Carefully cut through the peritoneum to expose the gastrointestinal tract (**Figure 1B**).

4.4.1. It is important to note that the uterine horns can oftentimes be located directly under the peritoneum, so make incisions cautiously and *do not* touch the horns as this can affect uterine

motility.

4.5. Using forceps, remove the fascia and adipose tissue covering the gastrointestinal tract. Remove the following gastrointestinal tract segments from the abdominal cavity: the duodenum, jejunum, ileum, cecum, ascending and transverse colon (**Figure 1C**).

4.6. To **locate** the reproductive organs, first **identify** the urinary bladder (**Figure 1C, "4"**), which may have a deflated appearance due to voiding after euthanasia. The vagina will be right under the urinary bladder.

4.7. Locate the pubic symphysis **at the confluence of the pubic bones (caudally to the bladder)**.

4.8. Using scissors, remove the pubic symphysis by carefully making incisions on its lateral sides through the interpubic fibrocartilaginous tissue to gain access to and provide a route for vagina extraction (**Figure 1D**).

4.9. Cut through the perineum located between the anus and lower part of the vulva.

4.10. Using forceps, lift the vagina and slowly excise the rectum.

4.11. Identify two uterine horns that bifurcate into a fork, rostrally to the vagina. Locate a convoluted oviduct and ovary at the end of each horn, which may be hidden under the remaining gastrointestinal tract segments. Use small dissecting scissors to remove any ligaments that connect to and support the horns, oviducts, and ovaries within the abdominal cavity.

4.12. Remove the reproductive **tract**, which includes the vagina, uterus, oviducts, and ovaries, from the abdominal cavity.

4.13. **Transfer** the isolated reproductive tract (**Figure 1E**) into a 100 mm Petri dish **filled with 10 mL of DPBS**.

Note: *DO NOT compress the uterine horns to avoid damaging the myometrium!*

4.14. Use forceps and surgical scissors to remove any connective and adipose tissue **surrounding** the uterine horns and vagina as well as any fur in the pubic region that could hinder the image quality. Remove the broad ligament to allow motility of the uterine horns.

4.15. Wash the **isolated reproductive tract** with fresh DPBS **two** times **and** transfer **it** into a 35 mm Petri dish filled with 3 mL oxygenated Krebs solution.

5. Tissue Imaging

5.1. Place the Petri dish containing the reproductive tract in oxygenated Krebs buffer on a black surface. Maintain the dish at room temperature.

Note: It is possible to use an infrared warming pad to maintain the tissue at 37 °C.

5.2. Allow 15-30 min for spontaneous contractions to begin. Record spontaneous uterine motility for 10 min from an axial plane using any type of digital video equipment.

5.3. Transfer the preparation into a Petri dish containing the oxygenated Krebs buffer supplemented with a test compound. Record spontaneous uterine motility for about 10 min from an axial plane using any type of digital video equipment.

5.4. Wash the entire reproductive tract in 100 mm Petri dish with 10 mL of DPBS to assess the reversibility of treatment.

5.5. Transfer the preparation into a Petri dish with the freshly oxygenated Krebs buffer. Record spontaneous uterine motility for about 10 min from an axial plane using any type of digital video equipment.

5.6. Transfer the preparation to another 35 mm Petri dish filled with oxygenated Krebs buffer supplemented with the vehicle for the test compound to ensure that there are no mechanically induced changes in spontaneous uterine motility. This is an important control.

5.7. Transfer the video footage to a computer hard drive.

6. Data Analysis

6.1. Make clips using any video editing software from the original video footage containing the control, treatment, and wash episodes.

6.2. Use the MATLAB software and the provided script (see online Supplemental Information) to quantify spontaneous uterine motility.

Note: Computer Vision Toolbox add-on for MATLAB must be installed for the script to be fully functional.

6.2.1. Open the MATLAB script, go to the **Editor** tab, and click **Run**.

6.2.2. Select the first video file and click **Open**.

6.2.3. Enter a label for the video file in the pop-up dialog box and click **OK**.

6.2.4. Enter the time interval (s) needed for calculating the rate of horn movement (Δ Euclidean distance / Δs).

6.2.5. Use the mouse cursor to select two points on the first frame of the video. A pop-up window will ask to confirm that the selected points should be used for tracking. Click “**Start**” to initiate the real time tracking process that will be displayed in the pop-up window. Alternatively, click “**Reselect Points**” to reselect the two points.

6.2.6. Monitor the accuracy of the tracking process on the pop-up window.

6.2.7. Observe a rate vs. time scatter plot and distance vs. time scatter plot in a new pop-up window. Save the two figures by selecting **File | Save As** in the same window to document the data.

6.2.8. Find a folder named "PointTrackerData," automatically created by MATLAB, in the same directory where the MATLAB script is located. Identify an Excel file named "label_Data" containing data points collected from the video in two separate worksheet tabs.

Note: Any alternative motion tracking software can be used to quantify spontaneous uterus motility.

6.3. Use an appropriate software (e.g., Excel or SigmaPlot 13) to perform the statistical analysis.

REPRESENTATIVE RESULTS:

Figure 1 shows representative images taken during the entire reproductive tract isolation procedure that is described in this protocol. To avoid contaminating the buffer with fur, which would decrease video quality, we moistened the mouse body with 70% ethanol. The major benchmark for the dissection section of the protocol is to find the urinary bladder. The uterus and vagina will be located inferior to the urinary bladder.

To test the protocol, we treated the entire reproductive tract with epinephrine. Epinephrine is well-known to cause uterine smooth muscle relaxation. This hormone is endogenously produced in the adrenal medulla and serves as a stress hormone in mammals. We used 1 μ M epinephrine in our experiments. This is a saturating concentration known to cause maximal response¹². A series of four experiments were performed, with similar results being observed in each trial. **Figure 2** shows representative images of one such experiment. We also assessed the effect of 10 μ M epinephrine on the entire reproductive tract preparation. However, in this case, the effect was so strong that we could not achieve a successful washout, and spontaneous motility did not recover.

To quantify the spontaneous motility of the reproductive tract, we designed an algorithm allowing us to assess the average rate of change in the Euclidean distance between two selected points on the mouse reproductive tract. The point positions are tracked using the motion tracking module of MATLAB software. The corresponding script for MATLAB, which we used to calculate the Euclidean distances, is provided in the supplemental information online. The position of points is critical for a successful motion tracking procedure. Careful consideration should be

taken concerning the quality of the videos because the light reflections from the Petri dish's wall may distract the motion tracker, and it may stop tracking the horn movement while re-assigning the point to one of the light reflections. We opted to place one of the points in the middle of a horn to ensure that it was far enough from the Petri dish wall reflections. The second point was usually selected on the vagina since it did not exhibit spontaneous motility. **Figure 3** provides a sample of data analysis, and **Supplemental figure 1** shows the representative images acquired during motion tracking.

FIGURE LEGENDS:

Figure 1: Steps of entire reproductive tract isolation. (A) An incision in the skin was made and the abdominopelvic region was exposed above the peritoneum (1). (B) The serous membrane was slowly opened to expose the gastrointestinal tract (2). (C) The gastrointestinal tract has been moved to expose the uterine horns (3). The urinary bladder (4) can be visualized near the conjunction of the horns. (D) The uterine horns have been freed and cuts have been made on the lateral sides of the pubic symphysis (5) to expose the vagina (6). (E) Removal of the isolated reproductive tract and placement into DPBS solution. Any excess fur or connective tissue was removed. (F) A deep indentation can be seen on the vagina (right) after removal of the rectum (left, 7). (G) The surrounding connective tissue is removed. Leica digital camera and Application Suite software (version 3.7.0) was used to acquire real-time images during dissection (camera setting: hue 20/saturation 80).

Figure 2: A representative experiment with the entire isolated reproductive tract is shown. The images were taken 15 s apart before (panel A), during (panel B), and after (panel C) the application of 1 μ M epinephrine. The reproductive tract preparation exhibited high motility in panels A and C in the absence of epinephrine, but it is quiescent in panel B in the presence of 1 μ M epinephrine. The unedited video footage is provided as **Supplemental video 1, 2 and 3**.

Figure 3: Data analysis in the *ex vivo* experiment described in Figure 2. (A) A time course of the Euclidean distance change rate is shown. The reference points between which the distance was determined during spontaneous uterine motility are shown as green dots in the inset. The points were selected at the proximal part of the vagina and the middle segment of a uterine horn as depicted. The blue filled circles show the spontaneous motility rate values before adding epinephrine, the red circles show the spontaneous motility rates in the presence of 1 μ M epinephrine, and the green filled circles show the spontaneous motility rates after a washout. (B) A comparison of average Euclidean distance change rates (pixels/s) before addition of epinephrine (blue bar), in the presence of 1 μ M epinephrine (red bar), and after a washout (green bar). The MATLAB software was used to quantify the uterine motility. Δt interval was set at 5 s. " Δ Distance" is calculated as the difference between the initial frame distance and the frame distance 5 s later. The statistical analysis was performed using Kruskal-Wallis One Way Analysis of Variance on Ranks followed by all pairwise multiple comparison procedures according to the Dunn's Method using SigmaPlot 13. The asterisk indicates the data set that was significantly different from the other experimental data sets ($P = <0.001$).

Supplemental movie 1: Time-lapse video clip showing spontaneous uterine motility before adding 1 μ M epinephrine.

Supplemental movie 2: Time-lapse video clip showing spontaneous uterine motility when the Krebs buffer was supplemented with 1 μ M epinephrine.

Supplemental movie 3: Time-lapse video clip showing spontaneous uterine motility after washout.

Supplemental figure 1: Representative images taken every 15 s during motion tracking.

Supplemental material: The MATLAB-based tracking algorithm script.

DISCUSSION:

Here we described a method for assessing spontaneous contractility of the entire rodent reproductive tract, which includes the ovaries, oviducts, uterine horns, and the vagina. We used a similar method to demonstrate the relaxant effect of phenylephrine on spontaneous uterine motility¹³, however, in the past we were unable to provide quantitative analysis of the data. In this work, we developed an algorithm for quantitative motility data analysis using the MATLAB motion tracking module. This is a useful technique for testing new drugs that regulate uterine contractility regardless of whether the drugs relax or constrict uterine smooth muscles. A major advantage of this model is that the reproductive tract is intact, preserving all intrinsic intrauterine cellular interactions. Notably, this protocol does not require any special equipment. The uterus isolation can be done with a simple magnifying glass and there is no requirement for any sophisticated video recording equipment. If a high-resolution digital camera is not available for imaging, a personal mobile phone camera may be used as an alternative.

The most critical step of the protocol for assessing reproductive tract motility is to obtain viable uterine tissue. The myometrium, within the uterine horns, is the motile element of the reproductive tract. Therefore, during isolation it is important to avoid overstretching or compressing the horns. It is also important to ensure that the uterine tissue is well-oxygenated throughout the experiment to maintain uterine motility. The best way to prevent any damage to the uterine horns is to make contact with only the adjacent connective tissue while cleaning the uterus or moving the reproductive tract. Since the vagina does not contract spontaneously during the experiment, it is acceptable to compress it with the forceps when moving the reproductive tract from one dish to another. The entire reproductive tract experiments may be performed in conjunction with isometric tension recordings that assess preload- and/or oxytocin-induced uterine contractility. However, a wire myograph is an expensive piece of equipment that is not always available in a common laboratory environment.

The described method has several limitations. Since the myometrium is very sensitive to compressions or pulls, this complicates the dissection process of the reproductive tract. If the horns are damaged during dissection, no spontaneous contractility will be observed. This is a

major limitation of the protocol because it is uncertain whether the contractile smooth muscle cells were unknowingly damaged despite the use of proper care and caution or whether they lacked motility due to a natural cause. Indeed, we observed no motility in 10-20% of the reproductive tract preparations in this study. It is important to ensure that the vaginal segment of the reproductive tract remains intact because removal of the vagina markedly decreases spontaneous motility of the uterine horns. In contrast, the absence of ovaries and/or oviducts does not impair the entire reproductive tract motility. In addition, one should note that some compounds are sensitive to oxidation. For example, epinephrine can be easily oxidized. Testing the effects of such compounds would require shorter incubation time preventing excessive oxidation. However, shorter incubation times may hinder the ability of a drug to efficiently penetrate the thickness of the uterine wall. A further limitation of the method includes assessing the 3-dimensional movements of the horns. The horns have an innate nature of curling into a 3-dimensional plane, complicating analysis. To overcome this problem, one may decrease the Krebs buffer volume in the Petri dish to 2 mL.

We found that the optimum age range for female mice is 2-5 months. We indicated that anesthesia with isoflurane may result in reduced motility and additional washes may be necessary to prevent this isoflurane-induced complication. Alternatively, one can use carbon dioxide to euthanize mice. If difficulties arise during dissection, focus on landmarks, such as the urinary bladder, may help. To quantify the obtained motility data, we used MATLAB software. The major problem with motion tracking in MATLAB was that the tracker was unable to properly locate the horns when they moved near the wall of the Petri dish. Adobe Premier Element was used to clip the video footage and to reduce the size of video files. Although it is an outstanding software package, it may not always be available in a typical laboratory setting. An alternative option may be to use the free motion tracking module of ImageJ software or even simple manual assessment of images taken with identical intervals and comparing the position of the uterine horns on a segmentation grid. **Figure 2** shows an example of simple assessment of the spontaneous uterine motility and includes a comparison of reproductive tract movements within a 15 s interval.

No simple method assessing uterine motility in a Petri dish setting has been reported thus far. Ultrasound and intrauterine pressure sensors can be used to monitor human uterus contractility¹⁴. However, it is difficult to study underlying mechanisms in the intact human uterus. Therefore, the use of animal models for investigating spontaneous uterine contractility is important. The female reproductive tract exhibits spontaneous myometrial contractions that are critical for a woman's well-being, including her fertility and labor¹⁵. These contractions can be visualized as endometrial waves during an ultrasound examination. However, during menstruation, over contractility of the uterus can create discomfort and lead to dysmenorrhea, or menstrual cramps. To help relieve some symptoms of dysmenorrhea, new drugs targeted at relaxing uterine smooth muscles are needed. Our simple method provides a way for assessing the effects of various compounds on uterine contractility.

In this study, we used our easy Petri dish model to confirm the effectiveness of epinephrine, a uterine relaxant hormone¹², to prevent spontaneous uterine motility of isolated mouse

reproductive tracts. Our method may also be used for testing such compounds that may increase the contractility of the uterus. Importantly, [this](#) method might have [the](#) potential to be upgraded for throughput drug screening using a six-well plate format. Thus, the method we present here may have [the](#) capability to be optimized for industrial scale screening procedures. We did not attempt to perform similar experiments in larger rodents, but we expect that similar spontaneous motility will be present in isolated rat uteri. The larger reproductive tract of rats may exhibit more pronounced uterine motility. We found that pregnant mouse uteri may also be assessed using this *ex vivo* uterine motility Petri dish model. As expected, the spontaneous motility of the pregnant uterus was reduced because it is in a quiescent state. However, increased weight added by the fetal tissue may also contribute to motility obstruction. It may still be beneficial to further explore the suitability of this entire reproductive tract model to assess the effect of tocolytic (relaxant) or uterotonic (stimulant) compounds in the context of pregnancy and labor. Thus, here we presented an easy *ex vivo* model for assessing the spontaneous motility of [the](#) intact reproductive tract. This [approach may](#) be adopted for drug screening and be utilized for novel drug discovery.

ACKNOWLEDGMENTS:

This work was supported by internal IU funds. AGO conceived the study. XC and AGO were involved in the design of the described experiments. FL and AGO analyzed and interpreted the data. KLL, JOB, FL performed all of the *ex vivo* experiments. FL wrote the MATLAB script. KLL, JOB, and AGO wrote the manuscript. All authors read and approved the final version of the manuscript.

DISCLOSURES:

The authors have nothing to disclose.

REFERENCES:

1. Kuijsters,N.P.M., *et al.* Uterine peristalsis and fertility: current knowledge and future perspectives: a review and meta-analysis. *Reproductive BioMedicine Online*. **35** (1), 50-71, doi: 10.1016/j.rbmo.2017.03.019 (2017).
2. Kural,M., Noor,N.N., Pandit,D., Joshi,T., & Patil,A. Menstrual characteristics and prevalence of dysmenorrhea in college going girls. *Journal of Family Medicine and Primary Care*. **4** (3), 426-431, doi: 10.4103/2249-4863.161345 (2015).
3. Dehnavi,Z.M., Jafarnejad,F., & Kamali,Z. The Effect of aerobic exercise on primary dysmenorrhea: A clinical trial study. *Journal of education and health promotion*. **7**, 3, doi: 10.4103/jehp.jehp_79_17 (2018).
4. Lindner,H.R., *et al.* Significance of prostaglandins in the regulation of cyclic events in the ovary and uterus. *Advances in prostaglandin and thromboxane research*. **8**, 1371-1390 (1980).
5. Bernardi,M., Lazzeri,L., Perelli,F., Reis,F.M., & Petraglia,F. Dysmenorrhea and related disorders. *F1000 research*. **6**, 1645, doi: 10.12688/f1000research.11682.1 (2017).
6. Marjoribanks,J., Ayeleke,R.O., Farquhar,C., & Proctor,M. Nonsteroidal anti-inflammatory drugs for dysmenorrhoea. *The Cochrane database of systematic reviews*. **7**, CD001751, doi: 10.1002/14651858.CD001751.pub3 (2015).

7. Oladosu, F.A., *et al.* Abdominal skeletal muscle activity precedes spontaneous menstrual cramping pain in primary dysmenorrhea. *American journal of obstetrics and gynecology*. **219** (1), 91, doi: 10.1016/j.ajog.2018.04.050 (2018).
8. Lawson, C.C., *et al.* Occupational exposures among nurses and risk of spontaneous abortion. *American journal of obstetrics and gynecology*. **206** (4), 327-328, doi: 10.1016/j.ajog.2011.12.030 (2012).
9. Mazze, R.I., Wilson, A.I., Rice, S.A., & Baden, J.M. Fetal development in mice exposed to isoflurane. *Teratology*. **32** (3), 339-345, doi: 10.1002/tera.1420320303 (1985).
10. Byers, S.L., Wiles, M.V., Dunn, S.L., & Taft, R.A. Mouse estrous cycle identification tool and images. *PLoS One*. **7** (4), e35538, doi: 10.1371/journal.pone.0035538 (2012).
11. Caligioni, C.S. Assessing reproductive status/stages in mice. *Current protocols in neuroscience*. **Appendix 4**, Appendix, doi: 10.1002/0471142301.nsa04is48 (2009).
12. Segal, S., Csavoy, A.N., & Datta, S. The tocolytic effect of catecholamines in the gravid rat uterus. *Anesthesia and analgesia*. **87** (4), 864-869 (1998).
13. Chen, X., *et al.* Phenylephrine, a common cold remedy active ingredient, suppresses uterine contractions through cAMP signalling. *Scientific reports*. **8** (1), 11666, doi: 10.1038/s41598-018-30094-5 (2018).
14. Domino, M., Pawlinski, B., & Gajewski, Z. Biomathematical pattern of EMG signal propagation in smooth muscle of the non-pregnant porcine uterus. *PLoS One*. **12** (3), e0173452, doi: 10.1371/journal.pone.0173452 (2017).
15. Crane, L.H. & Martin, L. Pace-maker activity in the myometrium of the oestrous rat: in vivo studies using video-laparoscopy. *Reproduction, fertility, and development*. **3** (5), 519-527 (1991).



[Click here to access/download](#)

Supplemental Coding Files

Single_Video_Script_and_Protocol_Manuscript_Revision
_v2.docx

