

Journal of Visualized Experiments

Looking outwards: Isolation of cyanobacterial released carbohydrate polymers and proteins

--Manuscript Draft--

Article Type:	Invited Methods Article - JoVE Produced Video
Manuscript Number:	JoVE59590R2
Full Title:	Looking outwards: Isolation of cyanobacterial released carbohydrate polymers and proteins
Keywords:	Extracellular carbohydrate polymers; released polysaccharides; exoproteome; secretion; cyanobacteria; Synechocystis
Corresponding Author:	Carlos Flores PORTUGAL
Corresponding Author's Institution:	
Corresponding Author E-Mail:	Carlos.Flores@ibmc.up.pt
Order of Authors:	Carlos Eduardo de Bento Flores Paula Tamagnini
Additional Information:	
Question	Response
Please indicate whether this article will be Standard Access or Open Access.	Standard Access (US\$2,400)
Please indicate the city, state/province, and country where this article will be filmed . Please do not use abbreviations.	Porto, Portugal

TITLE:

Looking Outwards: Isolation of Cyanobacterial Released Carbohydrate Polymers and Proteins

AUTHORS AND AFFILIATIONS:

Carlos Flores^{1,2,3}, Paula Tamagnini^{1,2,4}

¹Bioengineering and Synthetic Microbiology Group, Instituto de Investigação e Inovação em Saúde, Universidade do Porto, Porto, Portugal

²Instituto de Biologia Celular e Molecular, Universidade do Porto, Porto, Portugal

³Instituto de Ciências Biomédicas Abel Salazar, Porto, Portugal

⁴Departamento de Biologia, Faculdade de Ciências, Universidade do Porto, Porto, Portugal

Corresponding Author:

Paula Tamagnini

pmtamagn@ibmc.up.pt

E-mail Address of Co-author:

Carlos Flores

carlos.flores@ibmc.up.pt

KEYWORDS:

extracellular carbohydrate polymers, released polysaccharides, exoproteome, secretion, cyanobacteria, *Synechocystis*

SUMMARY:

Here, protocols for the isolation of cyanobacterial released carbohydrate polymers and isolation of their exoproteomes are described. Both procedures embody key steps to obtain polymers or proteins with high purity degrees that can be used for further analysis or applications. They can also be easily adapted according to specific user needs.

ABSTRACT:

Cyanobacteria can actively secrete a wide range of biomolecules into the extracellular environment, such as heteropolysaccharides and proteins. The identification and characterization of these biomolecules can improve knowledge about their secretion pathways and help to manipulate them. Furthermore, some of these biomolecules are also interesting in terms of biotechnological applications. Described here are two protocols for easy and rapid isolation of cyanobacterial released carbohydrate polymers and proteins. The method for isolation of released carbohydrate polymers is based on conventional precipitation techniques of polysaccharides in aqueous solutions using organic solvents. This method preserves the characteristics of the polymer and simultaneously avoids the presence of contaminants from cell debris and culture medium. At the end of the process, the lyophilized polymer is ready to be used or characterized or can be subjected to further rounds of purification, depending on the final intended use. Regarding the isolation of the cyanobacterial exoproteome, the technique is based on the concentration of the cell-free medium after removal of the major contaminants by

centrifugation and filtration. This strategy allows for reliable isolation of proteins that reach the extracellular milieu via membrane transporters or outer membrane vesicles. These proteins can be subsequently identified using standard mass spectrometry techniques. The protocols presented here can be applied not only to a wide range of cyanobacteria, but also to other bacterial strains. Furthermore, these procedures can be easily tailored according to the final use of the products, purity degree required, and bacterial strain.

INTRODUCTION:

Cyanobacteria are widely recognized as prolific sources of natural products with promising biotechnological/biomedical applications. Therefore, understanding cyanobacterial secretion mechanisms and optimization of the extraction/recovery methods are essential to implement cyanobacteria as efficient microbial cell factories.

Many cyanobacterial strains are able to produce extracellular polymeric substances (EPS), mainly formed by heteropolysaccharides, that remain associated to the cell surface or are released into the medium as polysaccharides¹. These released carbohydrate polymers have distinct features compared to those from other bacteria, which make them suitable for a wide range of applications (e.g., antivirals², immunostimulatory³, antioxidant⁴, metal-chelating⁵, emulsifying⁶, and drug delivery agents^{7,8}). Methodology for the isolation of these polymers has largely contributed not only to improved yield but also to increased purity and the specific physical properties of the polymer obtained⁹. A vast majority of these methods for isolation of the polymers rely on precipitation strategies from the culture medium that are easily accomplished due to the polymer's strong anionic nature^{9,10}. In addition, removal of the solvents used in the precipitation step can be rapidly achieved by evaporation and/or lyophilization. Depending on the foreseen application, different steps can be coupled either after or before polymer precipitation in order to tailor the final product, which include trichloroacetic acid (TCA) treatment, filtration, or size exclusion chromatography (SEC) column purification¹⁰.

Cyanobacteria are also able to secrete a wide range of proteins through pathways dependent on membrane transporters (classical)¹¹ or mediated by vesicles (non-classical)¹². Therefore, analysis of the cyanobacterial exoproteome constitutes an essential tool, both to understand/manipulate cyanobacterial protein secretion mechanisms and understand the specific extracellular function of these proteins. Reliable isolation and analysis of exoproteomes require the concentration of the extracellular milieu, since the relative abundance of secreted proteins is relatively low. In addition, other physical or chemical steps (e.g., centrifugation, filtration, or protein precipitation) may optimize the quality of the exoproteome obtained, enriching the protein content¹³, and avoiding the presence of contaminants (e.g., pigments, carbohydrates, etc.)^{14,15} or the predominance of intracellular proteins in the samples. However, some of these steps may also restrict the set of proteins that can be detected, leading to a biased analysis.

This work describes efficient protocols for the isolation of released carbohydrate polymers and exoproteomes from cyanobacteria culture media. These protocols can be easily adapted to the study's specific objectives and user needs, while maintaining the basic steps presented here.

PROTOCOL:

1. Cyanobacterial released carbohydrate polymer isolation

1.1. Polymer isolation and removal of contaminants

1.1.1. Cultivate the cyanobacterial strain under standard conditions [e.g., 30 °C under a 12 h light (50 $\mu\text{E m}^{-2}\text{s}^{-1}$)/12 h dark regimen, with orbital shaking at 150 rpm]. Measure growth using standard protocols [e.g., optical density at 730 nm ($\text{OD}_{730\text{nm}}$), chlorophyll *a*, dry-weight, etc.], then measure the production of released polysaccharides according to the phenol-sulfuric acid method¹⁶.

1.1.2. Transfer the culture into dialysis membranes (12-14 kDa of molecular weight cut-off) and dialyze against a minimum of 10 volumes of deionized water for 24 h with continuous stirring.

NOTE: Depending on the volume of culture to dialyze and medium composition, it may be necessary to change the dialysis water.

1.1.3. Centrifuge the culture at 15 000 x *g* for 15 min at 4 °C. Transfer the supernatant to a new vial and discard the pellet (cells).

1.1.4. Centrifuge again at 20 000 x *g* for 15 min at 4 °C to remove contaminants such as cell wall debris or lipopolysaccharides (LPS).

1.1.5. Transfer the supernatant to a glass beaker and discard the pellet.

1.2. Precipitation of the polymer

1.2.1. Add 2 volumes of 96% ethanol to the supernatant.

1.2.2. Incubate the suspension at 4 °C, at least overnight.

1.2.3. Polymer recovery

1.2.3.1. For small or not visible amounts of precipitated polymer: centrifuge the suspension at 13,000 x *g* for 25 min at 4 °C. Discard the supernatant and resuspend the pellet in 1 mL or 2 mL of autoclaved deionized water. Transfer the aqueous suspension to a vial.

CAUTION: The supernatant should be discarded gently, as it can become easily resuspended.

1.2.3.2. For visible/large amounts of precipitated polymer: collect the precipitated polymer with sterile metal forceps to a vial. Squeeze the polymer and discard the excess ethanol.

1.2.4. Optional: depending on the degree of polymer purification required, repeat the

precipitation step with 96% ethanol after resuspension of the polymers in deionized water.

1.3. Lyophilization of the polymer

1.3.1. Keep the vials with the precipitated polymer at -80 °C, at least overnight.

1.3.2. Freeze-dry (lyophilize) the polymer for at least 48 h (do not let the suspension defrost before freeze-drying).

1.3.3. Store the dried polymer at room temperature (RT) until further use.

NOTE: Storing the polymer in a desiccator is advisable, as it can absorb water over time.

2. Cyanobacterial exoproteome isolation

2.1. Medium concentration

2.1.1. Cultivate cyanobacteria under standard conditions [e.g., 30 °C under a 12 h light (50 $\mu\text{E m}^{-2}\text{s}^{-1}$)/12 h dark regimen, with orbital shaking at 150 rpm]. Monitor the cyanobacterium growth using standard procedures (e.g., $\text{OD}_{730\text{nm}}$, chlorophyll *a*, dry-weight, etc.).

2.1.2. Centrifuge the cultures at 4 000 x *g*, for 10 min at RT.

2.1.3. Transfer the supernatant to a flask and discard the cell pellet.

2.1.4. Filter the decanted medium through a 0.2 μm pore size filter.

NOTE: The protocol can be paused here for a short time period, if the medium is kept at 4 °C.

2.1.5. Concentrate the medium approximately 500x (considering the initial volume of filtered medium), using centrifugal concentrators with a nominal molecular weight cut-off of 3 kDa. Centrifugation should be operated at 4 000 x *g* (maximum 1 h per centrifugation round) at 15 °C.

CAUTION: For the majority of concentrator brands, the filter device needs to be rinsed by centrifugation with ultrapure water before use. Once the filter is wet, do not let it dry out. Leave enough fluid on the reservoir when the device is not being used.

NOTE: Reducing the centrifugation temperature to 4 °C may be helpful if the aim is to study protein activity, though it will increase the time necessary for sample concentration. The protocol can be paused between centrifugation steps for short time periods if the medium is kept at 4 °C.

2.1.6. Rinse the walls of the filter device sample reservoir with the concentrated sample and transfer the content to a microcentrifuge tube.

2.1.7. Perform an additional washing step of the filter device sample reservoir with autoclaved culture medium to ensure maximal exoproteome recovery.

NOTE: To quantify the percentage of recovery, follow the specific manufacturer's instructions.

2.1.8. Store the exoproteome samples at -20 °C until further use.

NOTE: Addition of protease inhibitors is recommended for long-term storage.

2.2. Analysis of the exoproteome

2.2.1. Quantify the protein content by BCA protein assay in 96-well plate according to the manufacturer's instructions.

2.2.2. Separate the proteins by sodium dodecyl sulfate-polyacrylamide gel electrophoresis (SDS-PAGE), using standard staining protocols (e.g., Coomassie blue, silver staining).

2.2.3. Cut out the bands/gel regions of interest and collect them in different microcentrifuge tubes containing appropriate volumes of ultra-pure water.

2.2.4. Proceed with identification and analysis of the proteins by mass spectrometry.

REPRESENTATIVE RESULTS:

A schematic representation of the method described to extract released carbohydrate polymers from cyanobacterial cultures is depicted in **Figure 1**. Precipitated polymers from the moderate EPS producer cyanobacterium *Synechocystis* sp. PCC 6803 and the efficient EPS producer *Cyanothece* sp. CCY 0110 are shown in **Figure 2**. In **Figure 3**, lyophilized polymers with different degrees of contamination are shown, highlighting the importance of the centrifugation steps for the final product purity. **Figure 4** depicts the isolation method for the cyanobacterial exoproteome. Distinct cell-free medium concentrated samples (i.e., obtained from cultures in different growth phases and from a cyanobacterial strain with lower carotenoid production) are shown in **Figure 5**. Exoproteome samples from two morphologically distinct cyanobacterial strains, the unicellular cyanobacteria *Synechocystis* sp. PCC 6803 and the filamentous cyanobacteria *Anabaena* sp. PCC 7120, separated by SDS-PAGE, are shown in **Figure 6**.

FIGURE AND TABLE LEGENDS:

Figure 1: Workflow for the isolation of cyanobacterial released carbohydrate polymers. Shown is the workflow for isolation, starting from the cyanobacterial culture and removal of contaminants and ending with polymer isolation and lyophilization.

Figure 2: Cyanobacterial polymers after precipitation. (A) Polymer from the moderate EPS producer *Synechocystis* sp. PCC 6803 on the wall of the centrifuge flask after precipitation and centrifugation (arrows). **(B)** Polymer clumps from the efficient EPS producer *Cyanothece* sp. CCY

0110 floating in the glass beaker after precipitation.

Figure 3: Lyophilized cyanobacterial polymers. (A) Three independent batches of polymers isolated from *Synechocystis* sp. PCC 6803: without visible contamination (AI), and with pigmentation indicative of contamination with carotenoids (AII) or cell debris (AIII). (B) Lyophilized polymer from *Cyanothece* sp. CCY 0110.

Figure 4: Workflow for cyanobacterial exoproteome isolation. Shown is the workflow for isolation, from cyanobacterial culture to medium separation and concentration, ending with exoproteome analysis.

Figure 5: Microcentrifuge tubes with concentrated cell-free medium samples. (A) Concentrated medium samples from *Synechocystis* sp. PCC 6803 wild-type, collected at different OD_{730nm} (0.5, 1, and 2). (B) Concentrated medium sample from *Synechocystis* $\Delta sigF$, a mutant with impaired carotenoids production¹⁵.

Figure 6: Coomassie blue-stained SDS-PAGE gels showing the proteins accumulated in cyanobacterial cell-free concentrated medium. (A) Exoproteome from the unicellular cyanobacteria *Synechocystis* sp. PCC 6803 wild-type and $\Delta sigF$ mutant. (B) Exoproteome from *Synechocystis* $\Delta sigF$ contaminated with high levels of polysaccharides. (C) Exoproteome from the filamentous cyanobacterium *Anabaena* sp. PCC 7120.

DISCUSSION:

To better understand bacterial secretion mechanisms and study the products released, it is of extreme importance to demonstrate the efficient isolation and analysis of the biomolecules present in the extracellular bacterial environment (such as released carbohydrate polymers and proteins).

Cyanobacterial extracellular carbohydrate polymers are extremely complex, mainly due to the number and proportion of different monosaccharides that constitute their composition¹. The conventional methods used for isolation of these polymeric substances rely on the simple concept that these sugar-rich substances are soluble in aqueous solutions and can be precipitated by the addition of organic solvents (such as acetone or ethanol)^{9,17,18}. This occurs due to the extraction of water molecules from the polymers' hydration shells, and efficiency of the process depends intrinsically on the polymer's molecular weight (more efficient at higher molecular weight fractions), chemical structure, and concentration^{9,18}. In addition to the precipitation step, the method described here includes the critical steps of dialysis and centrifugation. Dialysis will efficiently remove salts and other compounds from the medium, which may appear after lyophilization as powder-like structures, while the centrifugation steps will remove major contaminants and cell debris.

Failures during these steps may lead to polymers with high contamination levels and different characteristics, depending on the isolation batch. Some contaminations can be easily detected macroscopically after polymer lyophilization, since they will alter the polymer pigmentation

(usually to white or light brown). For example, lyophilized polymers that are green or orange are generally highly contaminated with cell debris/chlorophyll or carotenoids. This is related to insufficient time or *g* force in centrifugation steps. However, some cyanobacterial strains can release pigments and secrete proteins that remain naturally associated with the polymers, and this needs to be considered when analyzing the final product¹⁹. Additional steps can be added to further purify the polymers (e.g., TCA treatments)¹⁰. Nevertheless, these purification steps could also have a negative impact in the final product, as removing proteins and other components can alter the polymer properties (e.g., viscosity, hydrophobicity, etc.)^{1,20}. Even repeating the precipitation/lyophilization steps can negatively affect polymers, mainly due to the freeze-thawing cycles that easily modify their physicochemical properties²¹. To improve the polymer yields, heating treatments can be applied to whole cultures prior to precipitation. This extra step releases the polymer associated with the cell surface, but it may also lead to depolymerization^{18,20}. In summary, it is important to notice that the choice of protocol will influence both the amount and quality of isolated polymers^{9,20}.

Regarding the cyanobacterial proteins identified in the extracellular milieu, they display a wide range of molecular weights and isoelectric points and can be either soluble or membrane-associated. This diversity of physicochemical properties represents an issue for the selection of the most suitable method for exoproteome isolation. The method presented here depends heavily on the concentration of the biomolecules in the extracellular milieu. This method isolates not only proteins that are secreted into the medium but also proteins present in outer membrane vesicles (OMVs) and derived from cell lysis. Therefore, centrifugation steps should be gently performed in order to avoid cell disruption, but at the same time collect OMVs. In cyanobacterial strains that are efficient OMVs producers, the exoproteome preparations are usually orange due to the presence of carotenoids associated with these lipidic structures^{14,15}. However, this feature can vary considerably depending on the cyanobacterial strain and growth phase. In order to assess the contribution of proteins by OMVs, ultracentrifugation steps should be added to the procedure²².

Furthermore, proteins that reach the extracellular space due to cell lysis may be detected by collecting samples in different growth phases and increasing the number of replicates. As aforementioned, since many cyanobacterial strains produce extracellular carbohydrate polymers (EPS), the exoproteome preparations could also have EPS in their composition. The filtration step should retain more complex and large EPS, but simpler EPS fractions may eventually pass through. Consequently, contamination with large amounts of carbohydrates can interfere with exoproteome analysis. For example, this contamination may cause a delay in protein separation in polyacrylamide gels, as well as mask less abundant proteins. Alternative protocols have been proposed for exoproteome isolation aiming to remove contaminating biomolecules present in the extracellular medium, but they have been shown to be very selective, which may lead to biased exoproteome profiles¹³. On the other hand, a certain amount of proteins may be trapped in more complex EPS fractions if they are stuck in the filter. In this case, analyzing exoproteome preparations from different growth phases/experimental conditions as well as analysis of the proteins in EPS fractions may help identify the entrapped proteins.

Overall, the protocols described here embody the crucial steps for efficient isolation of cyanobacterial released carbohydrate polymers and exoproteomes. Most importantly, they can be easily tailored according to specific user needs and include other bacterial strains.

ACKNOWLEDGMENTS:

This work was financed by Fundo Europeu de Desenvolvimento Regional (FEDER) funds through the COMPETE 2020 - Operacional Programme for Competitiveness and Internationalisation (POCI), Portugal 2020, and by Portuguese funds through FCT - Fundação para a Ciência e a Tecnologia/Ministério da Ciência, Tecnologia e Ensino Superior in the framework of the project POCI-01-0145-FEDER-028779 and the grant SFRH/BD/99715/2014 (CF).

DISCLOSURES:

The authors have nothing to disclose.

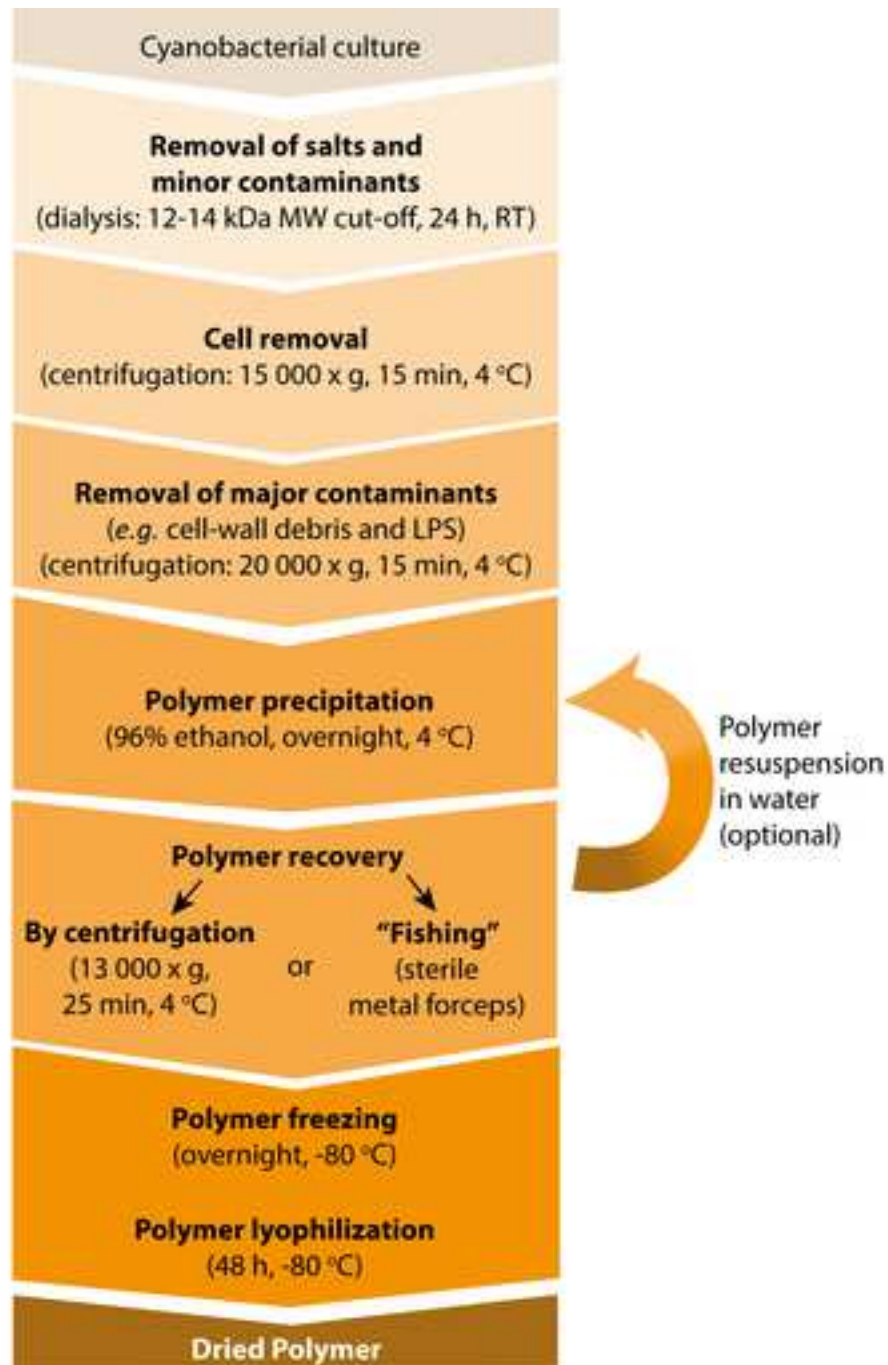
REFERENCES:

1. Pereira, S. et al. Complexity of cyanobacterial exopolysaccharides: composition, structures, inducing factors and putative genes involved in their biosynthesis and assembly. *FEMS Microbiology Reviews*. **33** (5), 917–941 (2009).
2. Kanekiyo, K. et al. Isolation of an Antiviral Polysaccharide, Nostoflan, from a Terrestrial Cyanobacterium, *Nostoc flagelliforme*. *Journal of Natural Products*. **68** (7), 1037-1041 (2005).
3. Løbner, M., Walsted, A., Larsen, R., Bendtzen, K., Nielsen, C. H. Enhancement of human adaptive immune responses by administration of a high-molecular-weight polysaccharide extract from the cyanobacterium *Arthrospira platensis*. *Journal of Medicinal Food*. **11** (2), 313-322 (2008).
4. Wang, H. B., Wu, S. J., Liu, D. Preparation of polysaccharides from cyanobacteria *Nostoc commune* and their antioxidant activities. *Carbohydrate Polymers*. **99**, 553-555 (2014).
5. Ozturk, S., Aslim, B., Suludere, Z., Tan, S. Metal removal of cyanobacterial exopolysaccharides by uronic acid content and monosaccharide composition. *Carbohydrate Polymers*. **101**, 265-271 (2014).
6. Han, P. P. et al. Emulsifying, flocculating, and physicochemical properties of exopolysaccharide produced by cyanobacterium *Nostoc flagelliforme*. *Applied Biochemistry and Biotechnology*. **172** (1), 36-49 (2014).
7. Leite, J. P. et al. Cyanobacterium-Derived Extracellular Carbohydrate Polymer for the Controlled Delivery of Functional Proteins. *Macromolecular Bioscience*. **17** (2), 1600206 (2017).
8. Estevinho, B. N. et al. Application of a cyanobacterial extracellular polymeric substance in the microencapsulation of vitamin B12. *Powder Technology*. **343**, 644-651 (2019).
9. Klock, J. H., Wieland, A., Seifert, R., Michaelis, W. Extracellular polymeric substances (EPS) from cyanobacterial mats: characterisation and isolation method optimisation. *Marine Biology*. **152** (5), 1077-1085 (2007).
10. Delattre, C., Pierre, G., Laroche, C., Michaud, P. Production, extraction and characterization of microalgal and cyanobacterial exopolysaccharides. *Biotechnology Advances*. **34** (7), 1159-1179 (2016).
11. Costa, T. R. et al. Secretion systems in gram-negative bacteria: structural and mechanistic insights. *Nature Reviews Microbiology*. **13** (6), 343–359 (2015).

12. Roier, S., Zingl, F. G., Cakar, F., Schild, S. Bacterial outer membrane vesicle biogenesis: a new mechanism and its implications. *Microbial Cell*. **3** (6), 257–259 (2016).
13. Sergeyenko, T. V., Los, D. A. Identification of secreted proteins of the cyanobacterium *Synechocystis* sp. strain PCC 6803. *FEMS Microbiology Letters*. **193** (2), 213–216 (2000).
14. Oliveira, P. et al. The versatile TolC-like Slr1270 in the cyanobacterium *Synechocystis* sp. PCC 6803. *Environmental Microbiology*. **18** (2), 486–502 (2016).
15. Flores, C. et al. The alternative sigma factor SigF is a key player in the control of secretion mechanisms in *Synechocystis* sp. PCC 6803. *Environmental Microbiology*. **21** (1), 343–359 (2018).
16. Dubois, M., Gilles, K. A., Hamilton, J. K., Rebers, P. A., Smith, F. Colorimetric method for determination of sugars and related substances. *Analytical Chemistry*. **28** (3), 350–356 (1956).
17. Parikh, A., Madamwar, D. Partial characterization of extracellular polysaccharides from cyanobacteria. *Bioresource Technology*. **97** (15), 1822–1827 (2006).
18. Rühmann, B., Schmid, J., Sieber, V. Methods to identify the unexplored diversity of microbial exopolysaccharides. *Frontiers in Microbiology*. **6**, 565 (2015).
19. Pathak, J., Rajneesh, R., Sonker, A. S., Kannaujiya, V. K., Sinha, R. P. Cyanobacterial extracellular polysaccharide sheath pigment, scytonemin: A novel multipurpose pharmacophore. *Marine Glycobiology*. CRC Press, 343–358 (2016).
20. Nguyen, A. T. B. et al. Performances of different protocols for exocellular polysaccharides extraction from milk acid gels: Application to yogurt. *Food Chemistry*. **239**, 742–750 (2018).
21. Jamshidian, H., Shojaosadati, S. A., Mousavi, S. M., Soudi, M. R., Vilaplana, F. Implications of recovery procedures on structural and rheological properties of schizophyllan produced from date syrup. *International Journal of Biological Macromolecules*. **105**, 36–44 (2017).
22. Couto, N., Schooling, S. R., Dutcher, J. R., Barber, J. Proteome profiles of outer membrane vesicles and extracellular matrix of *Pseudomonas aeruginosa* biofilms. *Journal of Proteome Research*. **14** (10), 4207–4222 (2015).

Figure 1: Workflow for the isolation of cyanobacterial released carbohydrate polymers.

[Click here to access/download;Figure;Figure 1.tif](#) 



A.



B.

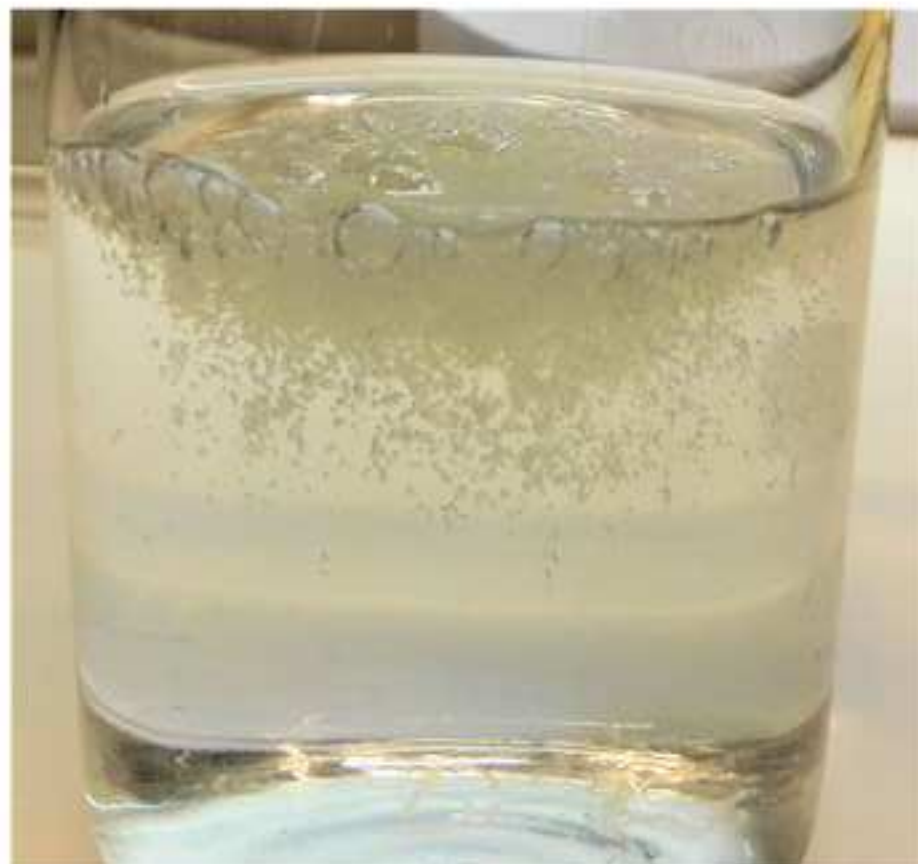
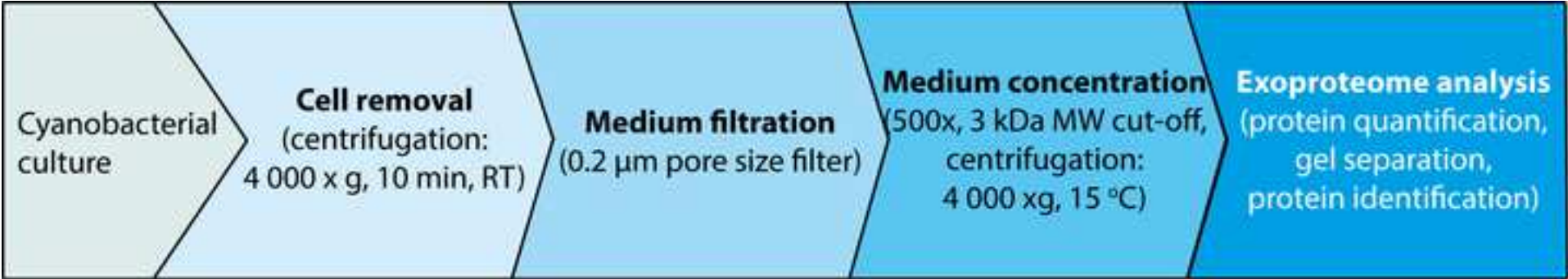




Figure 4: Workflow for cyanobacterial exoproteome isolation.



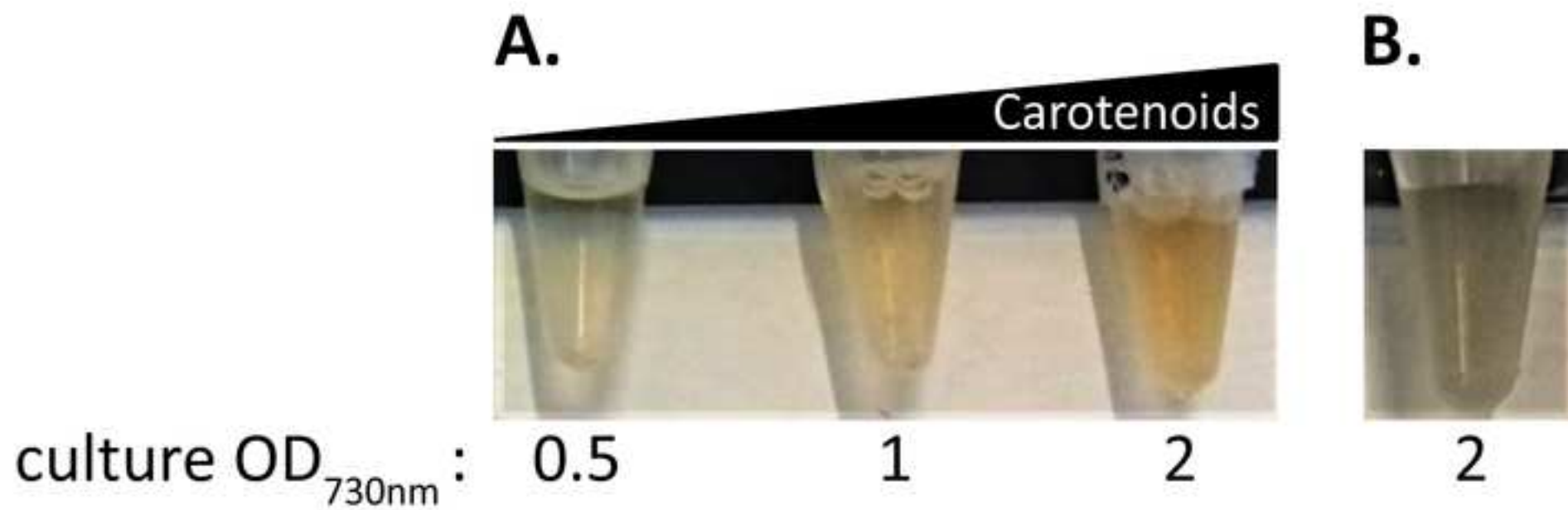
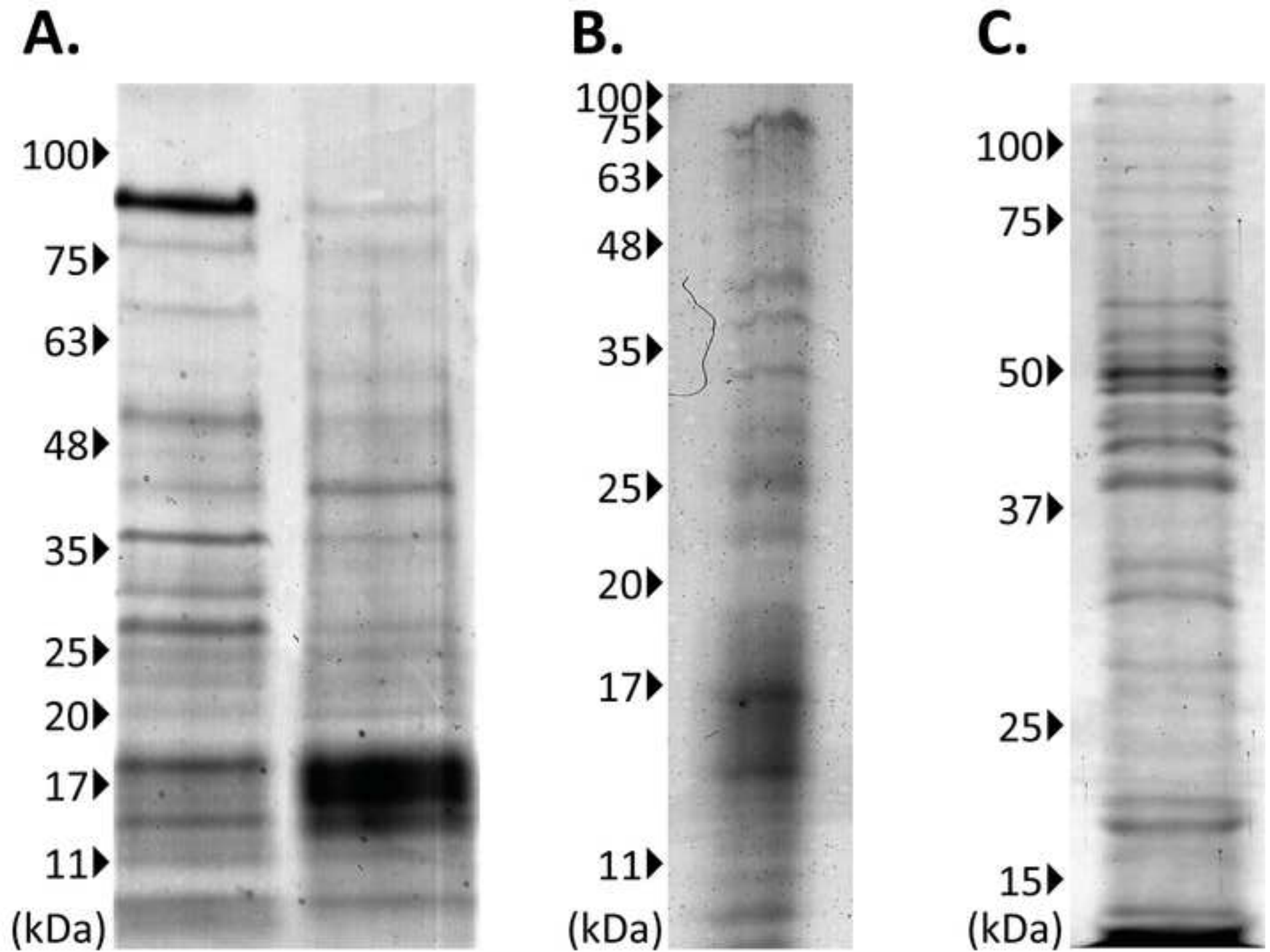


Figure 6: Coomassie blue stained SDS-PAGE gels showing the proteins accumulated in cyanobacterial cell-free concentrated medium.

[Click here to access/download;Figure;Figure 6.tif](#)



Name of Material/ Equipment	Company	Catalog Number	Comments/Description
Dialysis membranes	Medicell Membranes Ltd AGA - Álcool e Géneros	DTV.12000.07	Visking Tubing Size 7, Dia 23.8 mm, Width 39-41 mm 30m Roll
Ethanol 96%	Alimentares, S.A.	4.000.02.02.00	Fermentation ethyl alcohol 96% AGA
PES Filter 0.2 µm	Fisher Scientific, Lda	15206869	Syringe filter polystyrene 33MM 0.2µM STR
Amicon Ultra-15, Ultracel-3K	Merck Millipore Ltd.	UFC900324	Centrifugal filters with a nominal molecular weight cut-off of 3 kDa
Thermo Scientific Pierce BCA Protein Assay	Fisher Scientific, Lda	10741395	Green-to-blue, precise, detergent-compatible assay reagent to measure total protein concentration
Brilliant Blue G Colloidal Concentrate	Sigma Aldrich Química SL	B2025-1EA	Coomassie blue



1 Alewife Center #200
Cambridge, MA 02140
tel. 617.945.3051
www.jove.com

ARTICLE AND VIDEO LICENSE AGREEMENT

Title of Article:

Looking outwards : Isolation of cymobacterial extracellular
Carbohydrate polymers and proteins

Author(s):

Carlos Flores , Paula Tamagnini

Item 1: The Author elects to have the Materials be made available (as described at <http://www.jove.com/publish>) via:

☒ Standard Access

☐ Open Access

Item 2: Please select one of the following items:

☒ The Author is **NOT** a United States government employee.

☐ The Author is a United States government employee and the Materials were prepared in the course of his or her duties as a United States government employee.

☐ The Author is a United States government employee but the Materials were NOT prepared in the course of his or her duties as a United States government employee.

ARTICLE AND VIDEO LICENSE AGREEMENT

1. **Defined Terms.** As used in this Article and Video License Agreement, the following terms shall have the following meanings: "**Agreement**" means this Article and Video License Agreement; "**Article**" means the article specified on the last page of this Agreement, including any associated materials such as texts, figures, tables, artwork, abstracts, or summaries contained therein; "**Author**" means the author who is a signatory to this Agreement; "**Collective Work**" means a work, such as a periodical issue, anthology or encyclopedia, in which the Materials in their entirety in unmodified form, along with a number of other contributions, constituting separate and independent works in themselves, are assembled into a collective whole; "**CRC License**" means the Creative Commons Attribution-Non Commercial-No Derivs 3.0 Unported Agreement, the terms and conditions of which can be found at: <http://creativecommons.org/licenses/by-nc-nd/3.0/legalcode>; "**Derivative Work**" means a work based upon the Materials or upon the Materials and other pre-existing works, such as a translation, musical arrangement, dramatization, fictionalization, motion picture version, sound recording, art reproduction, abridgment, condensation, or any other form in which the Materials may be recast, transformed, or adapted; "**Institution**" means the institution, listed on the last page of this Agreement, by which the Author was employed at the time of the creation of the Materials; "**JoVE**" means MyJoVE Corporation, a Massachusetts corporation and the publisher of The Journal of Visualized Experiments; "**Materials**" means the Article and / or the Video; "**Parties**" means the Author and JoVE; "**Video**" means any video(s) made by the Author, alone or in conjunction with any other parties, or by JoVE or its affiliates or agents, individually or in collaboration with the Author or any other parties, incorporating all or any portion

of the Article, and in which the Author may or may not appear.

2. **Background.** The Author, who is the author of the Article, in order to ensure the dissemination and protection of the Article, desires to have the JoVE publish the Article and create and transmit videos based on the Article. In furtherance of such goals, the Parties desire to memorialize in this Agreement the respective rights of each Party in and to the Article and the Video.

3. **Grant of Rights in Article.** In consideration of JoVE agreeing to publish the Article, the Author hereby grants to JoVE, subject to **Sections 4 and 7** below, the exclusive, royalty-free, perpetual (for the full term of copyright in the Article, including any extensions thereto) license (a) to publish, reproduce, distribute, display and store the Article in all forms, formats and media whether now known or hereafter developed (including without limitation in print, digital and electronic form) throughout the world, (b) to translate the Article into other languages, create adaptations, summaries or extracts of the Article or other Derivative Works (including, without limitation, the Video) or Collective Works based on all or any portion of the Article and exercise all of the rights set forth in (a) above in such translations, adaptations, summaries, extracts, Derivative Works or Collective Works and (c) to license others to do any or all of the above. The foregoing rights may be exercised in all media and formats, whether now known or hereafter devised, and include the right to make such modifications as are technically necessary to exercise the rights in other media and formats. If the "Open Access" box has been checked in **Item 1** above, JoVE and the Author hereby grant to the public all such rights in the Article as provided in, but subject to all limitations and requirements set forth in, the CRC License.

ARTICLE AND VIDEO LICENSE AGREEMENT

4. **Retention of Rights in Article.** Notwithstanding the exclusive license granted to JoVE in **Section 3** above, the Author shall, with respect to the Article, retain the non-exclusive right to use all or part of the Article for the non-commercial purpose of giving lectures, presentations or teaching classes, and to post a copy of the Article on the Institution's website or the Author's personal website, in each case provided that a link to the Article on the JoVE website is provided and notice of JoVE's copyright in the Article is included. All non-copyright intellectual property rights in and to the Article, such as patent rights, shall remain with the Author.

5. **Grant of Rights in Video – Standard Access.** This **Section 5** applies if the "Standard Access" box has been checked in **Item 1** above or if no box has been checked in **Item 1** above. In consideration of JoVE agreeing to produce, display or otherwise assist with the Video, the Author hereby acknowledges and agrees that, Subject to **Section 7** below, JoVE is and shall be the sole and exclusive owner of all rights of any nature, including, without limitation, all copyrights, in and to the Video. To the extent that, by law, the Author is deemed, now or at any time in the future, to have any rights of any nature in or to the Video, the Author hereby disclaims all such rights and transfers all such rights to JoVE.

6. **Grant of Rights in Video – Open Access.** This **Section 6** applies only if the "Open Access" box has been checked in **Item 1** above. In consideration of JoVE agreeing to produce, display or otherwise assist with the Video, the Author hereby grants to JoVE, subject to **Section 7** below, the exclusive, royalty-free, perpetual (for the full term of copyright in the Article, including any extensions thereto) license (a) to publish, reproduce, distribute, display and store the Video in all forms, formats and media whether now known or hereafter developed (including without limitation in print, digital and electronic form) throughout the world, (b) to translate the Video into other languages, create adaptations, summaries or extracts of the Video or other Derivative Works or Collective Works based on all or any portion of the Video and exercise all of the rights set forth in (a) above in such translations, adaptations, summaries, extracts, Derivative Works or Collective Works and (c) to license others to do any or all of the above. The foregoing rights may be exercised in all media and formats, whether now known or hereafter devised, and include the right to make such modifications as are technically necessary to exercise the rights in other media and formats. For any Video to which this **Section 6** is applicable, JoVE and the Author hereby grant to the public all such rights in the Video as provided in, but subject to all limitations and requirements set forth in, the CRC License.

7. **Government Employees.** If the Author is a United States government employee and the Article was prepared in the course of his or her duties as a United States government employee, as indicated in **Item 2** above, and any of the licenses or grants granted by the Author hereunder exceed the scope of the 17 U.S.C. 403, then the rights granted hereunder shall be limited to the maximum

rights permitted under such statute. In such case, all provisions contained herein that are not in conflict with such statute shall remain in full force and effect, and all provisions contained herein that do so conflict shall be deemed to be amended so as to provide to JoVE the maximum rights permissible within such statute.

8. **Protection of the Work.** The Author(s) authorize JoVE to take steps in the Author(s) name and on their behalf if JoVE believes some third party could be infringing or might infringe the copyright of either the Author's Article and/or Video.

9. **Likeness, Privacy, Personality.** The Author hereby grants JoVE the right to use the Author's name, voice, likeness, picture, photograph, image, biography and performance in any way, commercial or otherwise, in connection with the Materials and the sale, promotion and distribution thereof. The Author hereby waives any and all rights he or she may have, relating to his or her appearance in the Video or otherwise relating to the Materials, under all applicable privacy, likeness, personality or similar laws.

10. **Author Warranties.** The Author represents and warrants that the Article is original, that it has not been published, that the copyright interest is owned by the Author (or, if more than one author is listed at the beginning of this Agreement, by such authors collectively) and has not been assigned, licensed, or otherwise transferred to any other party. The Author represents and warrants that the author(s) listed at the top of this Agreement are the only authors of the Materials. If more than one author is listed at the top of this Agreement and if any such author has not entered into a separate Article and Video License Agreement with JoVE relating to the Materials, the Author represents and warrants that the Author has been authorized by each of the other such authors to execute this Agreement on his or her behalf and to bind him or her with respect to the terms of this Agreement as if each of them had been a party hereto as an Author. The Author warrants that the use, reproduction, distribution, public or private performance or display, and/or modification of all or any portion of the Materials does not and will not violate, infringe and/or misappropriate the patent, trademark, intellectual property or other rights of any third party. The Author represents and warrants that it has and will continue to comply with all government, institutional and other regulations, including, without limitation all institutional, laboratory, hospital, ethical, human and animal treatment, privacy, and all other rules, regulations, laws, procedures or guidelines, applicable to the Materials, and that all research involving human and animal subjects has been approved by the Author's relevant institutional review board.

11. **JoVE Discretion.** If the Author requests the assistance of JoVE in producing the Video in the Author's facility, the Author shall ensure that the presence of JoVE employees, agents or independent contractors is in accordance with the relevant regulations of the Author's institution. If more than one author is listed at the beginning of this Agreement, JoVE may, in its sole

ARTICLE AND VIDEO LICENSE AGREEMENT

discretion, elect not take any action with respect to the Article until such time as it has received complete, executed Article and Video License Agreements from each such author. JoVE reserves the right, in its absolute and sole discretion and without giving any reason therefore, to accept or decline any work submitted to JoVE. JoVE and its employees, agents and independent contractors shall have full, unfettered access to the facilities of the Author or of the Author's institution as necessary to make the Video, whether actually published or not. JoVE has sole discretion as to the method of making and publishing the Materials, including, without limitation, to all decisions regarding editing, lighting, filming, timing of publication, if any, length, quality, content and the like.

12. **Indemnification.** The Author agrees to indemnify JoVE and/or its successors and assigns from and against any and all claims, costs, and expenses, including attorney's fees, arising out of any breach of any warranty or other representations contained herein. The Author further agrees to indemnify and hold harmless JoVE from and against any and all claims, costs, and expenses, including attorney's fees, resulting from the breach by the Author of any representation or warranty contained herein or from allegations or instances of violation of intellectual property rights, damage to the Author's or the Author's institution's facilities, fraud, libel, defamation, research, equipment, experiments, property damage, personal injury, violations of institutional, laboratory, hospital, ethical, human and animal treatment, privacy or other rules, regulations, laws, procedures or guidelines, liabilities and other losses or damages related in any way to the submission of work to JoVE, making of videos by JoVE, or publication in JoVE or elsewhere by JoVE. The Author shall be responsible for, and shall hold JoVE harmless from, damages caused by lack of sterilization, lack of cleanliness or by contamination due to

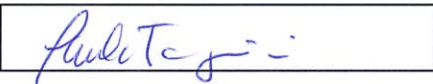
the making of a video by JoVE its employees, agents or independent contractors. All sterilization, cleanliness or decontamination procedures shall be solely the responsibility of the Author and shall be undertaken at the Author's expense. All indemnifications provided herein shall include JoVE's attorney's fees and costs related to said losses or damages. Such indemnification and holding harmless shall include such losses or damages incurred by, or in connection with, acts or omissions of JoVE, its employees, agents or independent contractors.

13. **Fees.** To cover the cost incurred for publication, JoVE must receive payment before production and publication of the Materials. Payment is due in 21 days of invoice. Should the Materials not be published due to an editorial or production decision, these funds will be returned to the Author. Withdrawal by the Author of any submitted Materials after final peer review approval will result in a US\$1,200 fee to cover pre-production expenses incurred by JoVE. If payment is not received by the completion of filming, production and publication of the Materials will be suspended until payment is received.

14. **Transfer, Governing Law.** This Agreement may be assigned by JoVE and shall inure to the benefits of any of JoVE's successors and assignees. This Agreement shall be governed and construed by the internal laws of the Commonwealth of Massachusetts without giving effect to any conflict of law provision thereunder. This Agreement may be executed in counterparts, each of which shall be deemed an original, but all of which together shall be deemed to be one and the same agreement. A signed copy of this Agreement delivered by facsimile, e-mail or other means of electronic transmission shall be deemed to have the same legal effect as delivery of an original signed copy of this Agreement.

A signed copy of this document must be sent with all new submissions. Only one Agreement is required per submission.

CORRESPONDING AUTHOR

Name:	Paula Tamagnini	
Department:		
Institution:	I35 / IBMC & FCUP	
Title:		
Signature:		Date: 18/12/2018

Please submit a **signed** and **dated** copy of this license by one of the following three methods:

1. Upload an electronic version on the JoVE submission site
2. Fax the document to +1.866.381.2236
3. Mail the document to JoVE / Attn: JoVE Editorial / 1 Alewife Center #200 / Cambridge, MA 02140

Porto, 28/January/2019

Dear Prof. Bing Wu,

Thank you very much for reviewing our manuscript JoVE59590 "Looking outwards: Isolation of cyanobacterial extracellular carbohydrate polymers and proteins" meant for publication in JoVE. Please find enclosed the revised version with tracked changes and the rebuttal document. We hope that we have improved the manuscript to a final acceptable version.

Sincerely,
Paula Tamagnini

Editorial comments:

The manuscript has been modified and the updated manuscript, **59590_R1.docx**, is attached and located in your Editorial Manager account. **Please use the updated version to make your revisions.**

1. Please take this opportunity to thoroughly proofread the manuscript to ensure that there are no spelling or grammar issues.
2. Please number the protocol steps continuously. According to the new JoVE format, all steps need to be numbered continuously.
3. Figure 1, Figure 4: Please add a short description in Figure Legend for each figure.
4. Please use no more than one note for each step.

All the topics were addressed in the new version.