

Journal of Visualized Experiments

Isolation of atrial myocytes from adult mice

--Manuscript Draft--

| | |
|--|--|
| Article Type: | Invited Methods Article - JoVE Produced Video |
| Manuscript Number: | JoVE59588R2 |
| Full Title: | Isolation of atrial myocytes from adult mice |
| Keywords: | atria, cardiomyocyte, electrophysiology, patch-clamp, action potential, ionic currents |
| Corresponding Author: | Robert Rose, PhD University of Calgary Calgary, Alberta CANADA |
| Corresponding Author's Institution: | University of Calgary |
| Corresponding Author E-Mail: | robert.rose@ucalgary.ca |
| Order of Authors: | Hailey J Jansen Robert Rose, PhD |
| Additional Information: | |
| Question | Response |
| Please indicate whether this article will be Standard Access or Open Access. | Standard Access (US\$2,400) |
| Please indicate the city, state/province, and country where this article will be filmed . Please do not use abbreviations. | Calgary, Alberta, Canada |



Dr. Robert A. Rose
Associate Professor
Libin Cardiovascular Institute of Alberta
Department of Cardiac Sciences
Department of Physiology and Pharmacology
Cumming School of Medicine
University of Calgary

GAC66, Health Research Innovation Centre
3280 Hospital Drive NW
Calgary, Alberta, Canada
T2N 4Z6
Phone: 403-210-3922
Fax: 403-210-9180
Email: robert.rose@ucalgary.ca

February 20, 2019

Dr. Nandita Singh, PhD
Senior Science Editor
Journal of Visualized Experiments

Dear Dr. Singh,

Thank you for the opportunity to revise our manuscript, entitled 'Isolation of atrial cardiomyocytes', which we recently submitted to the *Journal of Visualized Experiments*. We have addressed the remaining editorial comments on our manuscript. We include a 'response to reviewers' document outlining the changes made to our manuscript, as well as a version of our revised manuscript in which the changes are tracked in red text.

As noted in our original submission, a number of approaches for isolating mouse atrial cardiomyocytes have been described in the literature. An advantage of our isolation procedure is that it does not require complicated equipment and, when performed carefully, consistently produces high quality single atrial myocytes that are suitable for a patch-clamp electrophysiology. Another advantage of our approach is that it can be easily applied to any part of the atrial myocardium, enabling the experimentalist to prepare atrial myocytes in a region specific fashion. I routinely receive inquiries from other investigators wishing to learn our procedures. For all of these reasons, anticipate our submission will be of great interest to readers of the journal.

Sincerely,

A handwritten signature in blue ink that reads 'Robert Rose'.

Robert Rose, PhD

TITLE:

Isolation of Atrial Myocytes from Adult Mice

AUTHORS AND AFFILIATIONS:

Hailey J. Jansen¹ and Robert A. Rose¹

¹Libin Cardiovascular Institute of Alberta, Department of Cardiac Sciences, Department of Physiology and Pharmacology, Cumming School of Medicine, University of Calgary, Calgary, Alberta, Canada

Corresponding Author:

Robert A. Rose

Email: robert.rose@ucalgary.ca

Email Addresses of Co-authors:

Hailey J. Jansen (hailey.jansen@ucalgary.ca)

KEYWORDS

atria, cardiomyocyte, electrophysiology, patch-clamp, action potential, ionic currents

SUMMARY

This protocol is used to isolate single atrial cardiomyocytes from the adult mouse heart using a chunk digestion approach. This approach is used to isolate right or left atrial myocytes that can be used to characterize atrial myocyte electrophysiology in patch-clamp studies.

ABSTRACT

The electrophysiological properties of atrial myocytes importantly affect overall cardiac function. Alterations in the underlying ionic currents responsible for the action potential can cause pro-arrhythmic substrates that underlie arrhythmias, such as atrial fibrillation, which are highly prevalent in many conditions and disease states. Isolating adult mouse atrial cardiomyocytes for use in patch-clamp experiments has greatly advanced our knowledge and understanding of the cellular electrophysiology in the healthy atrial myocardium and in the setting of atrial pathophysiology. In addition, studies using genetic mouse models have elucidated the role of a vast array of proteins in regulating atrial electrophysiology. Here we provide a detailed protocol for the isolation of cardiomyocytes from the atrial appendages of adult mice using a combination of enzymatic digestion and mechanical dissociation of these tissues. This approach consistently and reliably yields isolated atrial cardiomyocytes that can then be used to characterize cellular electrophysiology by measuring action potentials and ionic currents in patch-clamp experiments under a number of experimental conditions.

INTRODUCTION

The atria, which are the thin walled, low pressure chambers of the heart that receive blood from the superior and inferior vena cavae as well as the pulmonary veins, are integral in normal cardiac physiology. Like other regions of the heart, the atria contain a number of cell types, including cardiomyocytes, fibroblasts, endothelial cells, vascular smooth muscle cells, and others. Atrial

myocytes are electrically excitable cells that play an essential role in the conduction of electrical signals through the heart, thereby ensuring proper atrial contraction during each heart beat¹. Electrical dysfunction in the atria can lead to a number of atrial specific arrhythmias such as atrial flutter and atrial fibrillation^{2,3}. These are highly prevalent, yet poorly understood, atrial arrhythmias that lead to significant morbidity and mortality. Atrial fibrillation can occur in association with genetic mutations, in association with aging or in the setting of acquired forms of heart disease, including hypertension, heart failure and diabetes^{2,4-6}. These conditions can alter the electrical properties of atrial myocytes which can create a substrate that increases the prevalence of arrhythmogenesis^{1,2}.

Normal electrical function in the atria, as well as atrial arrhythmogenesis, are importantly affected by the morphology of the action potential (AP) produced in atrial myocytes. The atrial AP is generated from the activity of a number of ionic currents, including the sodium current (I_{Na} , carried by $Na_v1.5$ channels), the L-type calcium current ($I_{Ca,L}$, carried by $Ca_v1.2$ and $Ca_v1.3$ channels), and several potassium currents including the ultra-rapid delayed rectifier potassium current (I_{Kur} , carried by $K_v1.5$ channels), the transient outward potassium current (I_{to} , carried by $K_v4.2$ and $K_v4.3$ channels), a steady state potassium current (I_{Kss} , carried by $K_v2.1$ channels), and the inward rectifier potassium current (I_{K1} , carried by $K_{ir2.1}$ channels)^{1,7,8}. Although they do not play a major role in the mouse atria, the rapid and slow components of the delayed rectifier K^+ current (I_{Kr} and I_{Ks}) also contribute to AP repolarization in some species⁷. Alterations in one or more of these ionic currents can significantly alter the electrical properties of atrial myocytes, which can lead to atrial arrhythmias. For example, a reduction in I_{Na} can slow conduction velocity across the atria by reducing the AP upstroke velocity. On the other hand, a reduction in repolarizing potassium currents or an increase in either $I_{Ca,L}$ or the late I_{Na} can result in the development of afterdepolarizations that can trigger spontaneous activity in the atria^{1,2,9}.

It is important to recognize that there are differences in AP morphology in different parts of the atrial myocardium that are likely due to differences in the expression or regulation of these underlying ion channels. For example, differences in AP duration between the right and left atria in association with differences in I_{to} current density have been well described¹⁰⁻¹³. Also, we have recently demonstrated that there are distinct patterns of electrical remodeling in the right and left atria of mice with chronic hypertension^{6,14}. The right atrial posterior wall also contains the sinoatrial node, which has its own distinct patterns of AP morphology and firing patterns¹⁵. The distinct properties of myocytes in each of these different parts of the atria can be investigated in detail using isolated myocytes from each of these regions.

There are different approaches that can be used to isolate atrial myocytes for patch-clamp electrophysiology studies¹⁶. One possibility is to use a retrograde perfusion approach where the heart is cannulated via the aorta for the delivery of enzymes. While this is a viable approach, it can produce variability in atrial myocyte quality due to inconsistencies in perfusion of the atria. We have adopted a 'chunk' digestion approach for the isolation of atrial myocytes that eliminates the need for retrograde perfusion of the heart. Our approach uses a combination of enzymatic digestion and mechanical dissociation of atrial tissue that consistently and reliably yields large numbers of isolated atrial myocytes that are suitable for patch-clamp studies. While we describe

our approach here using atrial appendage tissue, the approach can be used on any region of the atrial myocardium (i.e., right or left atrial appendages, free walls, posterior walls) that the investigator chooses. This approach is ideal for studies of atrial myocyte electrophysiology in genetically modified mice, in mouse models of cardiovascular disease, or for studying the effects of pharmacological compounds^{5,6,17-19}.

PROTOCOL

All animal procedures were approved by The University of Calgary Animal Care and Use Committee and were conducted in accordance with the guidelines of the Canadian Council on Animal Care. The atrial myocyte isolation, images, and representative results described below were obtained from a 15-week-old male wildtype C57Bl/6 mouse. We routinely use this protocol to isolate atrial myocytes from wildtype mice^{17,18}, mice carrying genetic mutations^{19,20} and mouse models of disease such as chronic hypertension^{6,14}. The protocol can be used similarly for male or female mice. We also utilized a similar version of this isolation procedure to isolate sinoatrial node myocytes from the mouse heart^{17,21-23}. A flowchart of this experimental protocol is located in **Figure 1**.

1. Preparation of stock solutions and equipment

1.1. Prepare 1 dissecting dish by adding silicone elastomer according to the manufacturer's instructions. Add enough silicone elastomer compound to cover the bottom of a 10 cm Petri dish to a depth of 1 cm. Allow to cure and then insert 6 insect pins into the dish.

NOTE: This silicone dissecting dish can be reused for months and stored at room temperature.

1.2. Prepare 3 fire-polished Pasteur pipettes with an opening of 1 mm (small bore), 3 mm (medium bore), or 5 mm (large bore) in diameter as shown in **Figure 2A**. To make these pipettes, score a Pasteur pipette and then snap along the score mark to produce an opening that is slightly larger than the desired bore size. Use a metal file to smooth the surface and then fire-polish this opening using an open flame.

NOTE: This will produce a smooth, fire-polished edge with an opening of the desired diameter. It is important that the opening is free of cracks and rough surfaces. These fire-polished pipettes can be stored at room temperature and reused for months.

1.3. Prepare stock solutions for Tyrode's pH 6.9 solution and Tyrode's pH 7.4 solution as listed in **Table 1**. Also prepare 10 mL each of 1 M MgCl₂, 1 M CaCl₂, and 100 mM CaCl₂. Use ultrapure water for all solutions and store at 4 °C for up to 2 months.

1.4. Prepare 1 L of modified Kraft-Brühe (KB) solution as indicated in **Table 2**. Use ultrapure water. Divide the solution into 20 mL aliquots and store at -20 °C for up to 2 months.

2. Preparation of solutions and isolation setup for atrial myocyte isolation

2.1. Prepare 50 mL of a modified Tyrode's pH 7.4 solution as described in **Table 3** in a 125 mL Erlenmeyer flask, using 1 M CaCl_2 and 1 M MgCl_2 stock solutions. Place the Erlenmeyer flask in a 35 °C water bath until use, as shown in **Figure 2B**.

2.2. Prepare the modified Tyrode's pH 6.9 solution as described in **Table 4** in a 50 mL tube, using the 100 mM CaCl_2 stock solution. Aliquot 2.5 mL of this solution into each of three 5 mL round bottom tubes. Place these tubes in a wire rack placed in a 35 °C water bath until use, as shown in **Figure 2B**.

2.3. Prepare the enzyme solution as described in **Table 5** in a 14 mL round bottom tube. To make the protease solution, add 1 mg of protease per 100 μL of ultrapure water. Place the tube containing this enzyme solution in the wire rack and incubate in a 35 °C water bath until use.

2.4. Thaw one aliquot of modified KB solution in a 35 °C water bath. Aliquot 2.5 mL of KB solution into each of three 5 mL round bottom tubes and 2.5 mL into a 14 mL round bottom tube. Place these tubes in the wire rack and incubate in a 35 °C water bath until use, as shown in **Figure 2B**.

2.5. Lay out the dissecting plate, dissecting tools, a Pasteur pipette, and the fire-polished pipettes as shown in **Figure 2B**.

3. Dissection of mouse atrial appendage(s)

3.1. Inject the mouse with 0.2 mL of heparin (10 000 USP units/10 mL) via intraperitoneal injection and wait 5 min for absorption.

3.2. Anesthetize the mouse using 3-4% isoflurane inhalation. When the mouse is fully anaesthetized and does not exhibit a toe pinch reflex, euthanize the mouse by cervical dislocation. Place the mouse on a paper towel or a cork board and tape the paws down to hold the mouse in place.

3.3. Wet the chest of the mouse with 70% ethanol. Remove the fur and skin covering the chest using curved scissors. Next, use rat tooth forceps to lift the sternum and then cut the diaphragm along the edge of the ribs. Remove the entire rib cage using curved scissors to expose the heart.

3.4. To remove the atrial appendage (right or left), gently lift the appendage using fine dissecting forceps and cut it out with spring scissors. Immediately transfer the atrial appendage to a silicone coated dissecting dish containing 20 mL of the warmed modified Tyrode's pH 7.4 solution described in step 2.1.

3.5. Place one dissecting pin at the top and one pin at the bottom of the opening of the atrial appendage. Using a pasture pipette, flush the atria with the warmed modified Tyrode's pH 7.4 solution to remove blood. Open the atrial appendage by cutting along the top and bottom edge

of the atrial appendage. Next, pin the corners of the atrial appendage down to create a flat, rectangular piece of tissue, as shown in **Figure 3A**.

4. Isolation of atrial myocytes

NOTE: Steps in this section are all performed at 35 °C, with tubes submerged in a 35 °C water bath. Be careful when transferring tissue strips between round bottom tubes to ensure that only the tissue (and not the solution) is transferred between tubes.

4.1. Cut the atrial appendage into approximately 8-10 equal sized strips (approximately 0.7 mm in width) using spring scissors and fine forceps. An example of the strips of atrial tissue is shown in **Figure 3B**. Note that the strips contract once they are cut free from the main piece of tissue. Using the small bore fire-polished pipette, transfer the tissue strips into the first tube containing warmed modified Tyrode's pH 6.9 solution described in step 2.2. Wait 5 min.

4.2. Wash the tissue strips by transferring them to the second and then the third round bottom tube containing modified Tyrode's pH 6.9 solution prepared in step 2.2 using the medium bore fire-polished pipette.

4.2.1. To wash the tissue strips, cap the 5 mL round bottom tube and gently invert the tube 3 times. Let the tissue strips settle to the bottom of the tube before transferring the tissue strips to the next tube using the medium bore fire-polished pipette.

4.3. Transfer the tissue strips into the enzyme solution described in step 2.3 using a medium bore fire-polished pipette and incubate for 30 min. Swirl the tube every 3-5 min to prevent the tissue strips from adhering together.

NOTE: At the beginning of the enzymatic digestion, tissue strips settle quickly following swirling. At approximately 20 min of digestion, the tissue strips begin to float in the enzymatic solution following swirling. During this time, the atrial tissue strips also change in appearance from pale pink to white as they are digested.

4.4. After enzymatic digestion, perform three washes using 2.5 mL of KB solution in the 5 mL round bottom tubes prepared in step 2.4. For each wash, gently invert the tube 3 times before moving the tissue to the next tube using the medium bore fire-polished pipette. Following the final wash, transfer the strips into the 14 mL round bottom tube containing 2.5 mL of KB solution. Wait 5 min.

4.5. Gently triturate the tissue for 7.5 min using the wide bore fire-polished pipette. This will mechanically dissociate the tissue strips and yield a cloudy solution filled with individual atrial myocytes.

NOTE: During trituration, the tissue becomes white and the solution becomes cloudy. The force of trituration, achieved by altering both the frequency and velocity of expelling the tissue strips

from the wide bore fire-polished pipette, should be tailored to the individual isolation. If trituration is too gentle, the cell yield will be low, while trituration that is too harsh will yield many dead cells. Avoid bubbles while triturating.

4.6. Fill the 14 mL round bottom tube containing the triturated tissue strips with KB solution to a final volume of 7-10 mL depending on the desired density of cells for experimental use. Place this tube at room temperature for 1 h. Following this incubation period, cells can be used for a variety of experiments for up to 7 h. Cells can also be stored at 4 °C for up to 7 h.

REPRESENTATIVE RESULTS

The atrial myocytes isolated using this protocol can be used to characterize the electrophysiological properties of these cells using the patch-clamp technique. Aliquots of atrial myocytes in KB solution can be added to the recording chamber of a standard patch-clamp apparatus and superfused with solutions appropriate for the kind of recording the experimentalist wishes to perform. Atrial myocytes isolated using this protocol are best used for electrophysiological studies within 6-7 h of isolation. Representative patch-clamp data from our laboratory is presented below.

Figure 4 illustrates examples of isolated atrial myocytes from normal mice prepared using the protocol above. Isolated atrial myocytes are typically on the order of 100 μm in length and 10 μm in width with clear striations. The capacitance of isolated atrial myocytes is typically 40-70 pF.

Figure 5A illustrates an example of an atrial myocyte AP recorded using the perforated patch-clamp technique in current clamp mode, as we have described previously^{6,19,20}. Summary data illustrating typical atrial myocyte AP parameters are provided in **Table 6**. Specifically, we present summary data for measurements of resting membrane potential (RMP), maximum upstroke velocity (V_{max}), overshoot (OS) and AP duration at 50% (APD₅₀), 70% (APD₇₀) and 90% (APD₉₀) repolarization time (**Table 6**). APs can also be recorded in the whole cell configuration¹⁴. The superfusion and pipette solutions for recording APs are available in **Table 7** and **Table 8**.

Figure 5B illustrates a representative family of Na^+ currents (I_{Na}) recorded in the whole cell configuration of the patch-clamp technique. These currents were recorded using 50 ms voltage clamp steps between -100 and +10 mV from a holding potential of -120 mV. We have described approaches and protocols for recording I_{Na} previously^{6,14,20}. A summary I_{Na} IV relationship is also presented in **Figure 5B**. Solutions used to record I_{Na} are presented in **Table 7** and **Table 8**.

Figure 5C illustrates a representative family of Ca^{2+} currents ($I_{\text{Ca,L}}$) recorded in the whole cell configuration of the patch-clamp technique. These currents were recorded using 250 ms voltage clamp steps between -60 and +80 mV from a holding potential of -70 mV. The experimental conditions that can be used to measure $I_{\text{Ca,L}}$ have been previously described^{17,18,20}. A summary $I_{\text{Ca,L}}$ IV relationship is also presented in **Figure 5C**. The solutions used to record $I_{\text{Ca,L}}$ are available in **Table 7** and **Table 8**.

Figure 5D illustrates a representative family of K^+ currents (I_K) recorded in the whole cell configuration of the patch-clamp technique. These currents were recorded from a holding potential of -80 mV using 500 ms voltage clamp steps between -120 mV and +80 mV, as we have described previously^{6,14}. The summary IV relationship for total I_K is also presented in **Figure 5D**. The solutions used to record I_K are available in **Table 7** and **Table 8**.

Using these approaches to record APs and major families of ionic currents, including Na^+ , Ca^{2+} and K^+ currents (as illustrated above), permits the investigator to rigorously interrogate atrial myocyte electrophysiology in a plethora of experimental conditions. Our laboratory has routinely employed these techniques to study atrial myocyte electrophysiology in normal mice, in mouse models of heart disease, and in genetically modified mice^{6,14,17-20}.

FIGURE AND TABLE LEGENDS

Figure 1. Flowchart for the atrial myocyte isolation protocol. Summary of the steps used to isolate atrial myocytes using this protocol.

Figure 2. Experimental setup and dissection tools for atrial myocyte isolation. (A). A small bore fire-polished pipette with an opening 1 mm in diameter (left) is used for tissue transfer following dissection, a medium bore fire-polished pipette with an opening 3 mm in diameter (middle) is used to transfer tissue strips during the isolation, and a large bore fire-polished pipette with an opening 5 mm in diameter (right) is used for trituration of digested atrial tissue. (B). Experimental setup for atrial myocyte isolation.

Figure 3. Image of the atrial appendage dissection. (A). Representative bright field image of an excised atrial appendage cut open and pinned out. (B). Representative bright field image of the atrial appendage cut into tissue strips of approximately 0.7 mm in width. Scale bar is 1 mm.

Figure 4. Images of isolated atrial myocytes. (A). Brightfield image of isolated atrial myocytes immediately after isolation. Scale bar is 50 μm . (B). Brightfield image of a single isolated atrial myocyte. Scale bar is 100 μm .

Figure 5. Representative patch-clamp data obtained from isolated atrial myocytes. (A). Representative stimulated AP recording from an isolated atrial myocyte. Summary of AP parameters is presented in **Table 6**. Amphotericin B (200 $\mu g/mL$) was added to the pipette solution to permeabilize the cellular membrane. (B). Representative I_{Na} recordings (left) and summary I_{Na} IV curve (right) from an isolated atrial myocyte. Nifedipine (10 μM) was added to the modified Tyrode's solution to block $I_{Ca,L}$ when recording I_{Na} . C. Representative $I_{Ca,L}$ recordings (left) and summary $I_{Ca,L}$ IV curve (right) from an isolated atrial myocyte. (D). Representative I_K recordings (left) and summary I_K IV curve (right) from an isolated atrial myocyte. The solutions used to record each of these currents are listed in **Table 7** and **Table 8**. Summary IV curves are averaged measurements from 10 atrial myocytes isolated from a 15-week-old male wildtype C57Bl/6 mouse.

Table 1: Stock Tyrode's pH 7.4 and stock Tyrode's pH 6.9 solutions. Composition of stock Tyrode's solutions (pH 7.4 and pH 6.9) that can be made in advance and stored at 4 °C for up to 2 months.

Table 2: Modified KB solution. Recipe for modified KB solution that can be made in advance, aliquoted, and stored at -20 °C for up to 2 months.

Table 3: Modified Tyrode's pH 7.4 solution with glucose, magnesium, calcium, and heparin. Composition of modified Tyrode's pH 7.4 solution used for the atrial tissue dissection. This solution should be made fresh and kept in a 35 °C water bath until use.

Table 4: Modified Tyrode's pH 6.9 solution containing glucose, taurine, BSA, and low calcium. Composition of the modified Tyrode's pH 6.9 solution used for the atrial myocyte isolation. This solution should be made fresh and kept in a 35 °C water bath until use.

Table 5: Enzymatic solution. Composition of the enzymatic solution used to enzymatically digest atrial tissue strips. This solution should be made fresh and kept in a 35 °C water bath until use.

Table 6: Summary of AP parameters from isolated atrial myocytes. Data are presented as mean \pm SEM, $n = 10$ atrial myocytes isolated from a 15-week male wildtype C57Bl/6 mouse.

Table 7: Composition of Tyrode's solutions used during patch-clamp experiments. Composition of the Tyrode's solutions used to record APs, I_{Na} , $I_{Ca,L}$, and I_K from isolated atrial myocytes.

Table 8: Composition of internal pipette solution used during patch-clamp experiments. Composition of the pipette filling solutions used to record APs, I_{Na} , $I_{Ca,L}$, and I_K from isolated atrial myocytes.

DISCUSSION

Our lab routinely uses this protocol to isolate mouse atrial myocytes for use in patch-clamp experiments in order to investigate the effects of different forms of cardiovascular disease, genetic mutations, or pharmacological compounds on atrial myocyte electrophysiology. Although highly reproducible, the quality of the data obtained from the isolated atrial myocytes depends on the quality of the isolation. In addition, reintroduction of calcium following the atrial myocyte isolation will result in cell death for a population of isolated myocytes due to the calcium paradox¹⁶. Accordingly, isolating viable, high-quality atrial myocytes using this approach requires practice and optimization at multiple points throughout the isolation. Once optimized, it is estimated that between 70-90% of the total atrial myocytes isolated using this approach will be both calcium tolerant and rod shaped. The steps requiring the most practice and optimization are discussed below.

The speed and efficiency of the dissection will have downstream effects on the quality of the isolated cells. It is important to take time to ensure all blood is removed from the atrial tissue and that tissue strips are cut to a similar size. It should take approximately 5 min to remove the

atrial appendage, cut the tissue into strips, and transfer the tissue strips into the first tube of modified Tyrode's pH 6.9 solution. However, if this step takes too long, the quality of the tissue may be compromised.

It is also important that tissue strips are cut to a uniform size within an isolation and between hearts. If tissue strips are too large or too small, or if they are not uniform within an isolation, this can cause problems during both enzymatic digestion and trituration. This is because small strips will be more thoroughly digested and large strips will be under digested. It is equally important to consider the genotype and disease setting being studied as the size of the atrial appendage can vary between animals. For example, hypertrophic hearts have larger atrial appendages compared to healthy hearts, and therefore the experimenter can cut more strips in hypertrophic hearts compared to normal sized hearts. Accordingly, optimizing the size of the cut tissue strips and applying these dimensions to each individual atrial appendage will greatly improve the reproducibility of myocyte isolations between experimental conditions.

The delicate balance between the enzymatic digestion and mechanical dissociation is key to a successful atrial myocyte isolation using this protocol. If tissue is not adequately swirled during the enzymatic digestion the individual tissue strips will tend to clump and stick together, which will limit the effectiveness of the enzymatic digestion. If agitated too frequently or vigorously, this can damage the atrial tissue, which will result in the isolation of nonviable cells. Mechanical dissociation of isolated atrial myocytes from tissue strips during trituration is the most critical step to practice and optimize using this approach to isolate atrial myocytes. If trituration is too gentle, cell yield will be low. On the other hand, if trituration is too harsh, then an abundance of non-viable myocytes will be isolated, and the quality of data obtained during patch-clamp experiments will be jeopardized. In addition, the composition of the atria can affect the isolation. For example, if tissue is fibrotic, the enzymatic digestion and the trituration steps may need to be modified. It is therefore important to take the time to develop the skills required to obtain high quality cells during trituration that can be used for patch-clamp experiments.

As with all experimental techniques there are limitations. This technique requires practice in order to reproducibly isolate viable, high quality myocytes, which in turn will impact the feasibility of any experiments to be performed using these myocytes. This approach is also terminal and atrial myocytes isolated using this approach can be used on the day of the isolation only. Our lab uses the cells within 6-7 h of isolation.

This approach of isolating atrial cardiomyocytes has several applications. For example, this approach can be modified to isolate atrial myocytes (as well as cardiac fibroblasts) from other species including human atrial tissue biopsies. In addition, a benefit to using this chunk method for atrial myocyte isolation (in contrast to retrograde perfusion of the heart) is that it can be modified to isolate cardiomyocytes from other regions of the heart, such as the sinoatrial node or other specific regions of the atrial myocardium, or encompass the entire supraventricular region of the heart. Our lab uses atrial cardiomyocytes for patch-clamp experiments to measure action potentials and ionic currents, although this approach need not be limited to this technique. For example, isolated myocytes can be used to investigate alterations in calcium transients and

contractility in a variety of experimental settings. Atrial cardiomyocytes can also be used in immunofluorescence studies to study the location of proteins or structures of interest. Accordingly, this approach is highly versatile with many possible applications.

ACKNOWLEDGEMENTS

This work is supported by operating grants from the Canadian Institutes of Health Research (MOP 93718, 142486) and the Heart and Stroke Foundation of Canada to R.A. Rose. H.J. Jansen is the recipient of a Killam Postdoctoral Fellowship.

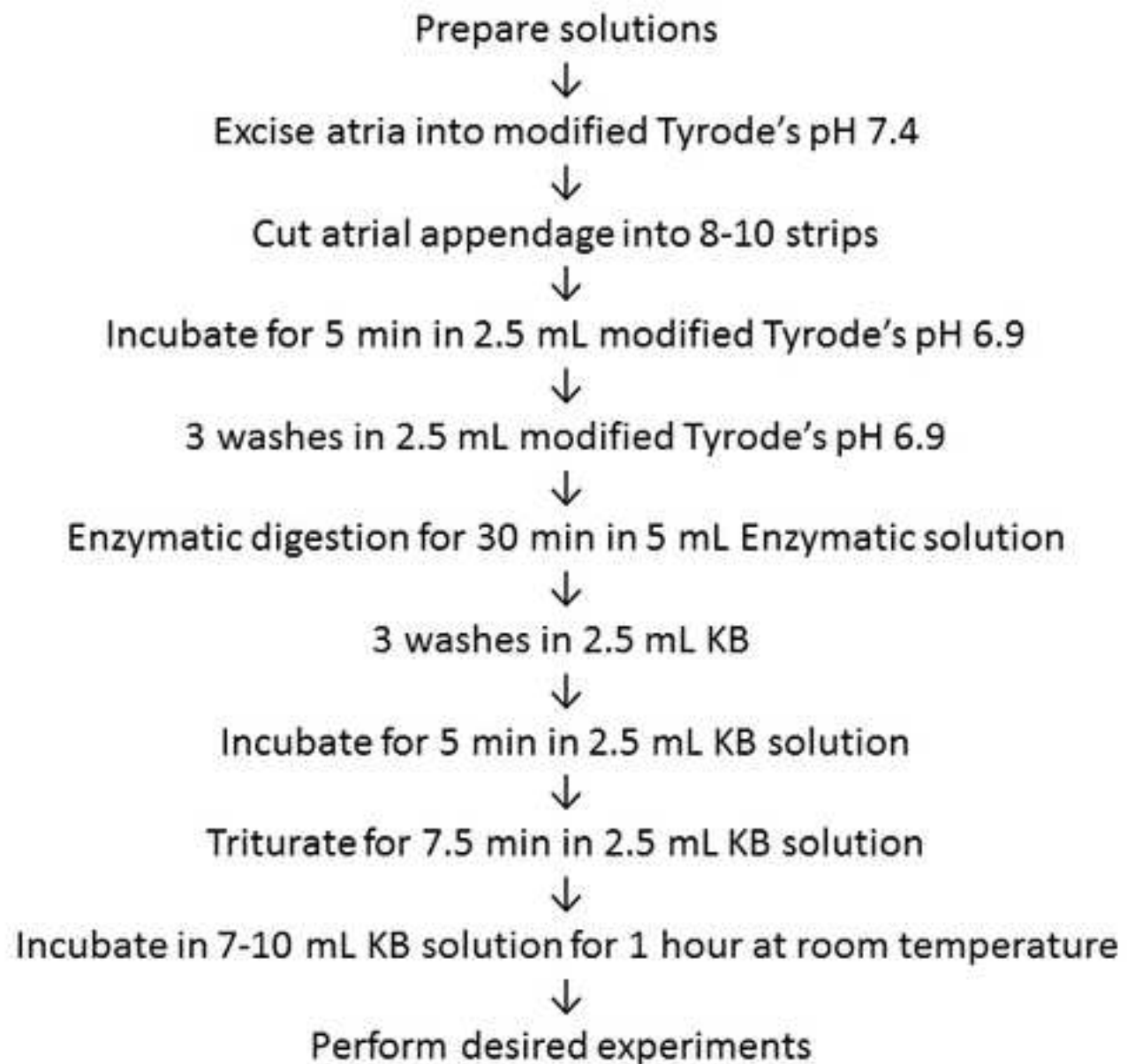
DISCLOSURES

The authors have to nothing to disclose.

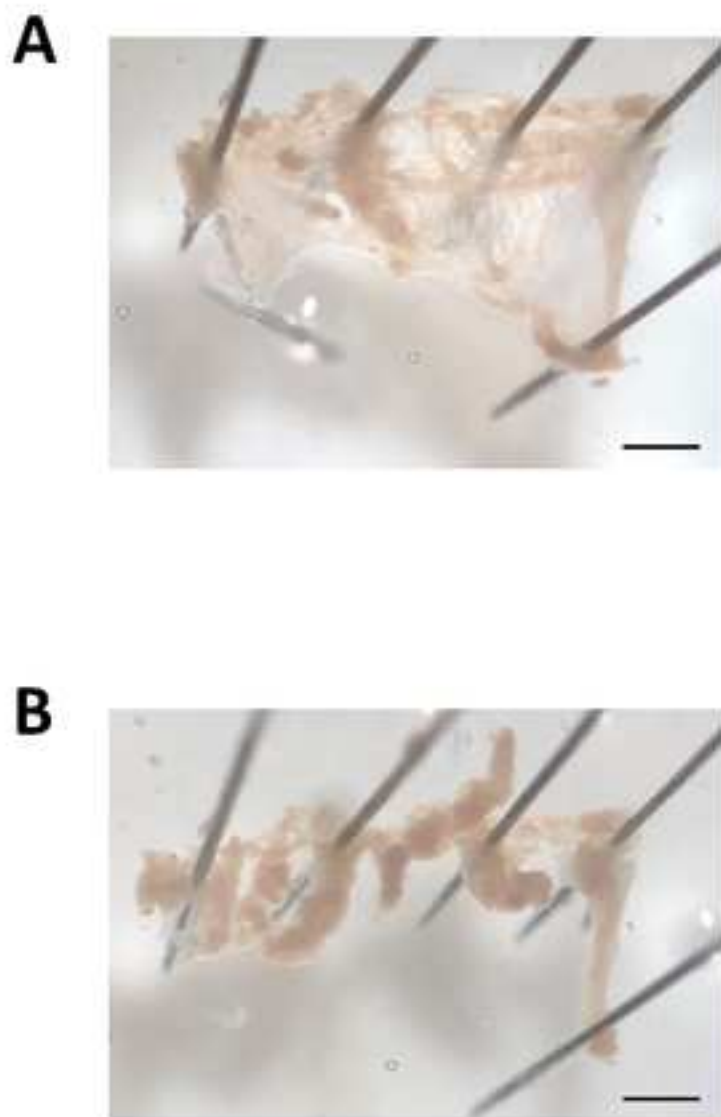
REFERENCES

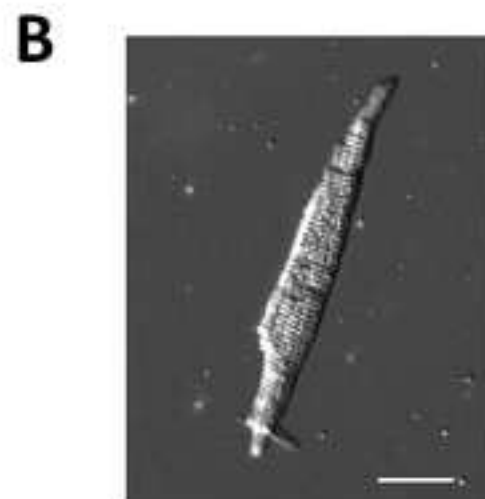
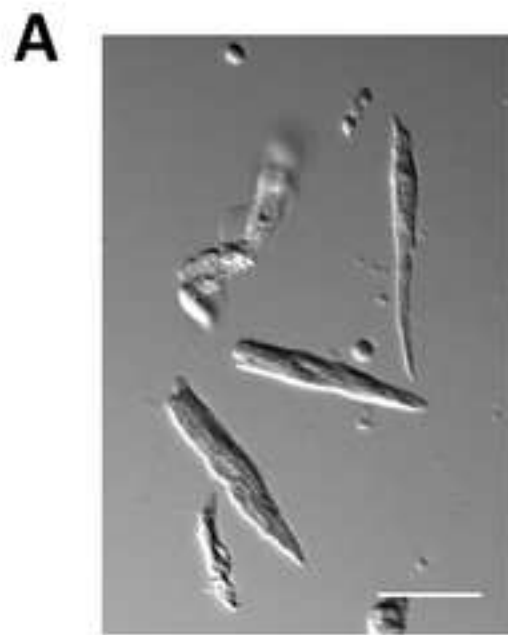
1. Bartos, D. C., Grandi, E. & Ripplinger, C. M. Ion Channels in the Heart. *Comprehensive Physiology*. **5** (3), 1423-1464 (2015).
2. Heijman, J., Voigt, N., Nattel, S. & Dobrev, D. Cellular and molecular electrophysiology of atrial fibrillation initiation, maintenance, and progression. *Circulation Research*. **114** (9), 1483-1499 (2014).
3. Jalife, J. Mechanisms of persistent atrial fibrillation. *Current Opinion in Cardiology*. **29** (1), 20-27 (2014).
4. Nattel, S., Maguy, A., Le Bouter, S. & Yeh, Y. H. Arrhythmogenic ion-channel remodeling in the heart: heart failure, myocardial infarction, and atrial fibrillation. *Physiological Reviews*. **87** (2), 425-456 (2007).
5. Jansen, H. J. *et al.* Atrial structure, function and arrhythmogenesis in aged and frail mice. *Scientific Reports*. **7** 44336 (2017).
6. Jansen, H. J. *et al.* Distinct patterns of atrial electrical and structural remodeling in angiotensin II mediated atrial fibrillation. *Journal of Molecular and Cellular Cardiology*. **124** 12-25 (2018).
7. Nerbonne, J. M. & Kass, R. S. Molecular physiology of cardiac repolarization. *Physiological Reviews*. **85** (4), 1205-1253 (2005).
8. Grant, A. O. Cardiac ion channels. *Circulation: Arrhythmia and Electrophysiology*. **2** (2), 185-194 (2009).
9. Schmitt, N., Grunnet, M. & Olesen, S. P. Cardiac potassium channel subtypes: new roles in repolarization and arrhythmia. *Physiological Reviews*. **94** (2), 609-653 (2014).
10. Lomax, A. E., Kondo, C. S. & Giles, W. R. Comparison of time- and voltage-dependent K⁺ currents in myocytes from left and right atria of adult mice. *American Journal of Physiology Heart and Circulatory Physiology*. **285** (5), H1837-1848 (2003).
11. Li, D., Zhang, L., Kneller, J. & Nattel, S. Potential ionic mechanism for repolarization differences between canine right and left atrium. *Circ Res*. **88** (11), 1168-1175 (2001).
12. Wirth, K. J. & Knobloch, K. Differential effects of dofetilide, amiodarone, and class Ic drugs on left and right atrial refractoriness and left atrial vulnerability in pigs. *Naunyn Schmiedeberg's Archives of Pharmacology*. **363** (2), 166-174 (2001).

13. Qi, A., Yeung-Lai-Wah, J. A., Xiao, J. & Kerr, C. R. Regional differences in rabbit atrial repolarization: importance of transient outward current. *American Journal of Physiology*. **266** (2 Pt 2), H643-649 (1994).
14. Jansen, H. J. *et al.* NPR-C (Natriuretic Peptide Receptor-C) Modulates the Progression of Angiotensin II-Mediated Atrial Fibrillation and Atrial Remodeling in Mice. *Circulation: Arrhythmia and Electrophysiology*. **12** (1), e006863 (2019).
15. Mangoni, M. E. & Nargeot, J. Genesis and regulation of the heart automaticity. *Physiological Reviews*. **88** (3), 919-982 (2008).
16. Voigt, N., Pearman, C. M., Dobrev, D. & Dibb, K. M. Methods for isolating atrial cells from large mammals and humans. *Journal of Molecular and Cellular Cardiology*. **86** 187-198 (2015).
17. Springer, J. *et al.* The natriuretic peptides BNP and CNP increase heart rate and electrical conduction by stimulating ionic currents in the sinoatrial node and atrial myocardium following activation of guanylyl cyclase-linked natriuretic peptide receptors. *Journal of Molecular and Cellular Cardiology*. **52** (5), 1122-1134 (2012).
18. Hua, R., Adamczyk, A., Robbins, C., Ray, G. & Rose, R. A. Distinct patterns of constitutive phosphodiesterase activity in mouse sinoatrial node and atrial myocardium. *PLoS One*. **7** (10), e47652 (2012).
19. Egom, E. E. *et al.* Impaired sinoatrial node function and increased susceptibility to atrial fibrillation in mice lacking natriuretic peptide receptor C. *Journal of Physiology*. **593** (5), 1127-1146 (2015).
20. Hua, R. *et al.* Effects of Wild-Type and Mutant Forms of Atrial Natriuretic Peptide on Atrial Electrophysiology and Arrhythmogenesis. *Circulation: Arrhythmia and Electrophysiology*. **8** (5), 1240-1254 (2015).
21. Krishnaswamy, P. S. *et al.* Altered parasympathetic nervous system regulation of the sinoatrial node in Akita diabetic mice. *Journal of Molecular and Cellular Cardiology*. **82** 125-135 (2015).
22. Mackasey, M. *et al.* Natriuretic peptide receptor C (NPR-C) protects against angiotensin II mediated sinoatrial disease in mice. *JACC Basic to Translational Science*. doi **10.1016/j.jacbts.2018.08.004** (2018).
23. Azer, J., Hua, R., Vella, K. & Rose, R. A. Natriuretic peptides regulate heart rate and sinoatrial node function by activating multiple natriuretic peptide receptors. *Journal of Molecular and Cellular Cardiology*. **53** (5), 715-724 (2012).



A**B**





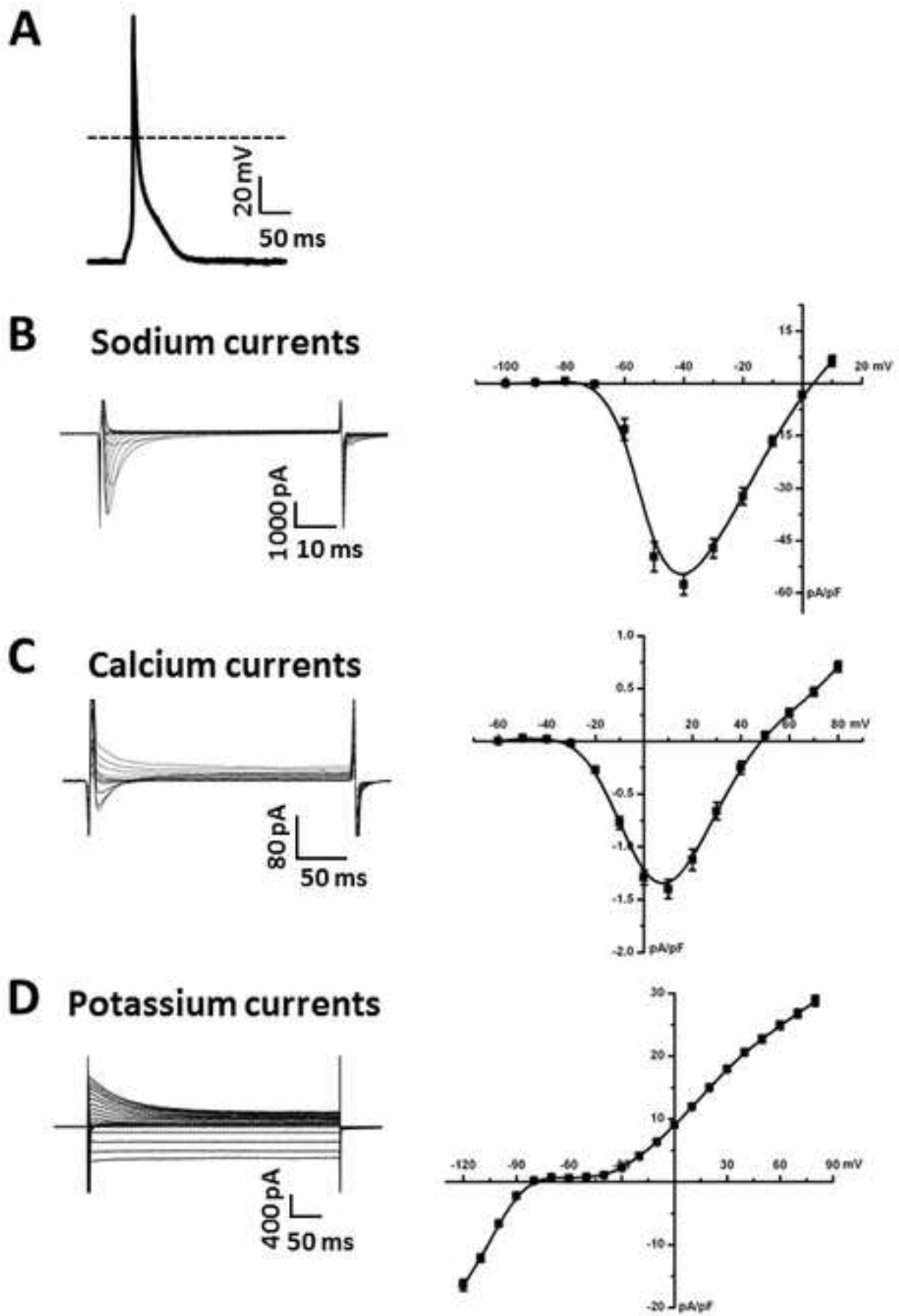


Table 1

| | Stock Tyrode's pH 6.9 | Stock Tyrode's pH 7.4 |
|---------------------------------|-----------------------|-----------------------|
| Chemical | in mM | in mM |
| NaCl | 140 | 140 |
| KCl | 5.4 | 5.4 |
| KH ₂ PO ₄ | 1.2 | 1.2 |
| HEPES | 5 | 5 |
| Final volume | 500 mL | 1 L |
| Final pH with NaOH | 6.9 | 7.4 |

Table 2

| Chemical | in mM |
|---------------------------------|-------|
| K-glutamate | 100 |
| K-aspartate | 10 |
| KCl | 25 |
| KH ₂ PO ₄ | 10 |
| MgSO ₄ | 2 |
| Taurine | 20 |
| Creatine | 5 |
| EGTA | 0.5 |
| Glucose | 20 |
| HEPES | 5 |
| BSA | 0.10% |
| Final volume | 1 L |
| Final pH with KOH | 7.2 |

Table 3

| Chemical | Amount |
|-----------------------|---------|
| Glucose | 5.55 mM |
| MgCl ₂ | 1 mM |
| CaCl ₂ | 1.8 mM |
| Stock Tyrode's pH 7.4 | 50 mL |
| Heparin | 250 µL |

Table 4

| Chemical | Amount |
|-----------------------|----------|
| Glucose | 18.5 mM |
| Taurine | 49.96 mM |
| BSA | 15 mg |
| CaCl ₂ | 0.066 mM |
| Stock Tyrode's pH 6.9 | 15 mL |

Table 5

| Chemical | Amount |
|--------------------------|------------|
| Collagenase | 1064 units |
| Elastase | 9 units |
| Protease solution | 65.2 μL |
| Modified Tyrode's pH 6.9 | 5 mL |

Table 6

| Parameter | Average |
|------------|-------------|
| RMP (mV) | -74.2 ± 0.7 |
| Vmax (V/s) | 144.6 ± 5.8 |
| OS (mV) | 71.9 ± 3.0 |
| APD50 (ms) | 11.1 ± 1.7 |
| APD70 (ms) | 23.0 ± 4.6 |
| APD90 (ms) | 54.7 ± 7.8 |

Table 7

| | Potassium currents and APs | Sodium currents | Calcium currents |
|----------|----------------------------------|--------------------|---------------------|
| Chemical | in mM | in mM | in mM |
| NaCl | 140 | 5 | |
| KCl | 5.4 | | |
| MgCl2 | 1 | 1 | 1 |
| CaCl2 | 1 | 1 | 2 |
| HEPES | 10 | 10 | 10 |
| Glucose | 5.5 | 5.5 | 5.5 |
| CsCl | | 130 | |
| TEA-Cl | | 5.4 | 145.5 |
| pH | 7.4 with NaOH | 7.4 with CsOH | 7.4 with CsOH |

Table 8

| Chemical | Potassium currents and APs in mM | Sodium currents in mM | Calcium currents in mM |
|--------------------|---|-----------------------------|------------------------------|
| NaCl | 5 | 5 | 5 |
| KCl | 140 | | |
| MgCl2 | 1 | 1 | 1 |
| CaCl2 | 0.2 | 0.2 | 0.2 |
| HEPES | 10 | 10 | 10 |
| EGTA | 5 | | 5 |
| Mg-ATP | 4 | 5 | 4 |
| Na-GTP | 0.3 | 0.3 | 0.3 |
| Na-phosphocreatine | 6.6 | | 6.6 |
| CsCl | | 130 | 135 |
| BAPTA | | 5 | |
| pH | 7.2 with KOH | 7.2 with CsOH | 7.2 with CsOH |

| Name of Reagent/ Equipment | Company |
|--|-------------------------------------|
| 1, 2-Bis(2-Aminophenoxy)ethane-N, N, N', N'-tetraacetic acid 98% | Sigma |
| lenosine 5'-triphosphate disodium salt hydrate BioXtra, ≥ 99%, from microb | Sigma |
| Adenosine 5'-triphosphate magnesium salt ≥ 95%, bacterial | Sigma |
| Amphocetericin B from Streptomyces sp. ~80% (HPLC), powder | Sigma |
| Bovine serum albumin | Sigma |
| Calcium chloride dihydrate | Sigma |
| Cesium chloride ReagentPlus, 99.9% | Sigma |
| Cesium hydroxide monohydrate ≥ 99.5% trace metals basis | Sigma |
| Collagenase Type 2 | Worthington Biochemical Corporation |
| Creatine anhydrous | Sigma |
| D-(+)-Glucose | Sigma |
| DL-Aspartic acid potassium salt | Sigma |
| Elastase suspension | Worthington Biochemical Corporation |
| Ethylene glycol-bis(2-amino-ethylether)-N,N,N',N'-tetraacetic acid ≥97.0% | Sigma |
| Guanosine 5'-triphosphate sodium salt hydrate ≥ 95% (HPLC), powder | Sigma |
| Heparin 10 000 USP units/10mL | SANDOZ |
| HEPES ≥ 99.5% (titration) | Sigma |
| L-Glutamic acid potassium salt monohydrate ≥ 99% (HPLC), powder | Sigma |
| Magnesium sulfate | Sigma |
| Nifedipine ≥ 98% (HPLC), powder | Sigma |
| Phosphocreatine disodium salt hydrate enzymatic, approx 98% | Sigma |
| Potassium chloride ACS reagent, 99.0-100.5% | Sigma |
| Potassium hydroxide | EM Science |
| Potassium phosphate monobasic | EMD |
| Protease from Streptomyces griseus, type XIV, ≥3.5 units/mg solid, powder | Sigma |
| Sodium chloride ACS reagent, ≥ 99.0% | Sigma |
| Sodium hydroxide, pellets, 97+%, A.C.S. reagent | Sigma |
| Sylgard 184 silicone elastomer kit | World Precision Instruments Inc |
| Taurine | Sigma |

Tetraethylammonium chloride $\geq 98\%$ (titration)

Sigma

| Catalog Number | Comments/Description |
|----------------|----------------------|
|----------------|----------------------|

| | |
|----------|--|
| A4926-1G | |
|----------|--|

| | |
|----------|--|
| A7699-1G | |
|----------|--|

| | |
|----------|--|
| A9187-1G | |
|----------|--|

| | |
|--------------|--|
| A4888-500 MG | |
|--------------|--|

| | |
|-----------|--|
| A3059-50G | |
|-----------|--|

| | |
|-------------|--|
| 223506-500G | |
|-------------|--|

| | |
|-------------|--|
| 289329-100G | |
|-------------|--|

| | |
|------------|--|
| 562505-1KG | |
|------------|--|

| | |
|----------|--|
| LS004176 | |
|----------|--|

| | |
|-------|--|
| C0780 | |
|-------|--|

| | |
|-----------|--|
| G7021-1KG | |
|-----------|--|

| | |
|------------|--|
| A2025-100G | |
|------------|--|

| | |
|----------|--|
| LS002279 | |
|----------|--|

| | |
|-----------|--|
| E4378-25G | |
|-----------|--|

| | |
|-------------|--|
| G8877-250MG | |
|-------------|--|

| | |
|-------|--|
| 10750 | |
|-------|--|

| | |
|------------|--|
| H3375-500G | |
|------------|--|

| | |
|------------|--|
| G1501-500G | |
|------------|--|

| | |
|------------|--|
| M2643-500G | |
|------------|--|

| | |
|----------|--|
| N7634-1G | |
|----------|--|

| | |
|----------|--|
| P7936-5G | |
|----------|--|

| | |
|------------|--|
| P3911-500G | |
|------------|--|

| | |
|----------|--|
| PX1480-1 | |
|----------|--|

| | |
|----------|--|
| PX1565-1 | |
|----------|--|

| | |
|----------|--|
| P5147-1G | |
|----------|--|

| | |
|-------------|--|
| S9888-2.5KG | |
|-------------|--|

| | |
|-------------|--|
| 221465-500G | |
|-------------|--|

| | |
|---------|--|
| SYLG184 | |
|---------|--|

| | |
|------------|--|
| T0625-100G | |
|------------|--|

T2265-100G

ARTICLE AND VIDEO LICENSE AGREEMENT

Title of Article:

Isolation of mouse atrial myocytes

Author(s):

Hailey J. Jansen, Robert A. Rose

Item 1: The Author elects to have the Materials be made available (as described at <http://www.jove.com/publish>) via:

☐

Standard Access

☒

Open Access

Item 2: Please select one of the following items:

☒

The Author is **NOT** a United States government employee.

☐

The Author is a United States government employee and the Materials were prepared in the course of his or her duties as a United States government employee.

☐

The Author is a United States government employee but the Materials were NOT prepared in the course of his or her duties as a United States government employee.

ARTICLE AND VIDEO LICENSE AGREEMENT

1. **Defined Terms.** As used in this Article and Video License Agreement, the following terms shall have the following meanings: **"Agreement"** means this Article and Video License Agreement; **"Article"** means the article specified on the last page of this Agreement, including any associated materials such as texts, figures, tables, artwork, abstracts, or summaries contained therein; **"Author"** means the author who is a signatory to this Agreement; **"Collective Work"** means a work, such as a periodical issue, anthology or encyclopedia, in which the Materials in their entirety in unmodified form, along with a number of other contributions, constituting separate and independent works in themselves, are assembled into a collective whole; **"CRC License"** means the Creative Commons Attribution-Non Commercial-No Derivs 3.0 Unported Agreement, the terms and conditions of which can be found at: <http://creativecommons.org/licenses/by-nc-nd/3.0/legalcode>; **"Derivative Work"** means a work based upon the Materials or upon the Materials and other pre-existing works, such as a translation, musical arrangement, dramatization, fictionalization, motion picture version, sound recording, art reproduction, abridgment, condensation, or any other form in which the Materials may be recast, transformed, or adapted; **"Institution"** means the institution, listed on the last page of this Agreement, by which the Author was employed at the time of the creation of the Materials; **"JoVE"** means MyJoVE Corporation, a Massachusetts corporation and the publisher of The Journal of Visualized Experiments; **"Materials"** means the Article and / or the Video; **"Parties"** means the Author and JoVE; **"Video"** means any video(s) made by the Author, alone or in conjunction with any other parties, or by JoVE or its affiliates or agents, individually or in collaboration with the Author or any other parties, incorporating all or any portion

of the Article, and in which the Author may or may not appear.

2. **Background.** The Author, who is the author of the Article, in order to ensure the dissemination and protection of the Article, desires to have the JoVE publish the Article and create and transmit videos based on the Article. In furtherance of such goals, the Parties desire to memorialize in this Agreement the respective rights of each Party in and to the Article and the Video.

3. **Grant of Rights in Article.** In consideration of JoVE agreeing to publish the Article, the Author hereby grants to JoVE, subject to **Sections 4** and **7** below, the exclusive, royalty-free, perpetual (for the full term of copyright in the Article, including any extensions thereto) license (a) to publish, reproduce, distribute, display and store the Article in all forms, formats and media whether now known or hereafter developed (including without limitation in print, digital and electronic form) throughout the world, (b) to translate the Article into other languages, create adaptations, summaries or extracts of the Article or other Derivative Works (including, without limitation, the Video) or Collective Works based on all or any portion of the Article and exercise all of the rights set forth in (a) above in such translations, adaptations, summaries, extracts, Derivative Works or Collective Works and (c) to license others to do any or all of the above. The foregoing rights may be exercised in all media and formats, whether now known or hereafter devised, and include the right to make such modifications as are technically necessary to exercise the rights in other media and formats. If the "Open Access" box has been checked in **Item 1** above, JoVE and the Author hereby grant to the public all such rights in the Article as provided in, but subject to all limitations and requirements set forth in, the CRC License.

ARTICLE AND VIDEO LICENSE AGREEMENT

4. **Retention of Rights in Article.** Notwithstanding the exclusive license granted to JoVE in **Section 3** above, the Author shall, with respect to the Article, retain the non-exclusive right to use all or part of the Article for the non-commercial purpose of giving lectures, presentations or teaching classes, and to post a copy of the Article on the Institution's website or the Author's personal website, in each case provided that a link to the Article on the JoVE website is provided and notice of JoVE's copyright in the Article is included. All non-copyright intellectual property rights in and to the Article, such as patent rights, shall remain with the Author.

5. **Grant of Rights in Video – Standard Access.** This **Section 5** applies if the "Standard Access" box has been checked in **Item 1** above or if no box has been checked in **Item 1** above. In consideration of JoVE agreeing to produce, display or otherwise assist with the Video, the Author hereby acknowledges and agrees that, Subject to **Section 7** below, JoVE is and shall be the sole and exclusive owner of all rights of any nature, including, without limitation, all copyrights, in and to the Video. To the extent that, by law, the Author is deemed, now or at any time in the future, to have any rights of any nature in or to the Video, the Author hereby disclaims all such rights and transfers all such rights to JoVE.

6. **Grant of Rights in Video – Open Access.** This **Section 6** applies only if the "Open Access" box has been checked in **Item 1** above. In consideration of JoVE agreeing to produce, display or otherwise assist with the Video, the Author hereby grants to JoVE, subject to **Section 7** below, the exclusive, royalty-free, perpetual (for the full term of copyright in the Article, including any extensions thereto) license (a) to publish, reproduce, distribute, display and store the Video in all forms, formats and media whether now known or hereafter developed (including without limitation in print, digital and electronic form) throughout the world, (b) to translate the Video into other languages, create adaptations, summaries or extracts of the Video or other Derivative Works or Collective Works based on all or any portion of the Video and exercise all of the rights set forth in (a) above in such translations, adaptations, summaries, extracts, Derivative Works or Collective Works and (c) to license others to do any or all of the above. The foregoing rights may be exercised in all media and formats, whether now known or hereafter devised, and include the right to make such modifications as are technically necessary to exercise the rights in other media and formats. For any Video to which this **Section 6** is applicable, JoVE and the Author hereby grant to the public all such rights in the Video as provided in, but subject to all limitations and requirements set forth in, the CRC License.

7. **Government Employees.** If the Author is a United States government employee and the Article was prepared in the course of his or her duties as a United States government employee, as indicated in **Item 2** above, and any of the licenses or grants granted by the Author hereunder exceed the scope of the 17 U.S.C. 403, then the rights granted hereunder shall be limited to the maximum

rights permitted under such statute. In such case, all provisions contained herein that are not in conflict with such statute shall remain in full force and effect, and all provisions contained herein that do so conflict shall be deemed to be amended so as to provide to JoVE the maximum rights permissible within such statute.

8. **Protection of the Work.** The Author(s) authorize JoVE to take steps in the Author(s) name and on their behalf if JoVE believes some third party could be infringing or might infringe the copyright of either the Author's Article and/or Video.

9. **Likeness, Privacy, Personality.** The Author hereby grants JoVE the right to use the Author's name, voice, likeness, picture, photograph, image, biography and performance in any way, commercial or otherwise, in connection with the Materials and the sale, promotion and distribution thereof. The Author hereby waives any and all rights he or she may have, relating to his or her appearance in the Video or otherwise relating to the Materials, under all applicable privacy, likeness, personality or similar laws.

10. **Author Warranties.** The Author represents and warrants that the Article is original, that it has not been published, that the copyright interest is owned by the Author (or, if more than one author is listed at the beginning of this Agreement, by such authors collectively) and has not been assigned, licensed, or otherwise transferred to any other party. The Author represents and warrants that the author(s) listed at the top of this Agreement are the only authors of the Materials. If more than one author is listed at the top of this Agreement and if any such author has not entered into a separate Article and Video License Agreement with JoVE relating to the Materials, the Author represents and warrants that the Author has been authorized by each of the other such authors to execute this Agreement on his or her behalf and to bind him or her with respect to the terms of this Agreement as if each of them had been a party hereto as an Author. The Author warrants that the use, reproduction, distribution, public or private performance or display, and/or modification of all or any portion of the Materials does not and will not violate, infringe and/or misappropriate the patent, trademark, intellectual property or other rights of any third party. The Author represents and warrants that it has and will continue to comply with all government, institutional and other regulations, including, without limitation all institutional, laboratory, hospital, ethical, human and animal treatment, privacy, and all other rules, regulations, laws, procedures or guidelines, applicable to the Materials, and that all research involving human and animal subjects has been approved by the Author's relevant institutional review board.

11. **JoVE Discretion.** If the Author requests the assistance of JoVE in producing the Video in the Author's facility, the Author shall ensure that the presence of JoVE employees, agents or independent contractors is in accordance with the relevant regulations of the Author's institution. If more than one author is listed at the beginning of this Agreement, JoVE may, in its sole

ARTICLE AND VIDEO LICENSE AGREEMENT

discretion, elect not take any action with respect to the Article until such time as it has received complete, executed Article and Video License Agreements from each such author. JoVE reserves the right, in its absolute and sole discretion and without giving any reason therefore, to accept or decline any work submitted to JoVE. JoVE and its employees, agents and independent contractors shall have full, unfettered access to the facilities of the Author or of the Author's institution as necessary to make the Video, whether actually published or not. JoVE has sole discretion as to the method of making and publishing the Materials, including, without limitation, to all decisions regarding editing, lighting, filming, timing of publication, if any, length, quality, content and the like.

12. **Indemnification.** The Author agrees to indemnify JoVE and/or its successors and assigns from and against any and all claims, costs, and expenses, including attorney's fees, arising out of any breach of any warranty or other representations contained herein. The Author further agrees to indemnify and hold harmless JoVE from and against any and all claims, costs, and expenses, including attorney's fees, resulting from the breach by the Author of any representation or warranty contained herein or from allegations or instances of violation of intellectual property rights, damage to the Author's or the Author's institution's facilities, fraud, libel, defamation, research, equipment, experiments, property damage, personal injury, violations of institutional, laboratory, hospital, ethical, human and animal treatment, privacy or other rules, regulations, laws, procedures or guidelines, liabilities and other losses or damages related in any way to the submission of work to JoVE, making of videos by JoVE, or publication in JoVE or elsewhere by JoVE. The Author shall be responsible for, and shall hold JoVE harmless from, damages caused by lack of sterilization, lack of cleanliness or by contamination due to


the making of a video by JoVE its employees, agents or independent contractors. All sterilization, cleanliness or decontamination procedures shall be solely the responsibility of the Author and shall be undertaken at the Author's expense. All indemnifications provided herein shall include JoVE's attorney's fees and costs related to said losses or damages. Such indemnification and holding harmless shall include such losses or damages incurred by, or in connection with, acts or omissions of JoVE, its employees, agents or independent contractors.

13. **Fees.** To cover the cost incurred for publication, JoVE must receive payment before production and publication of the Materials. Payment is due in 21 days of invoice. Should the Materials not be published due to an editorial or production decision, these funds will be returned to the Author. Withdrawal by the Author of any submitted Materials after final peer review approval will result in a US\$1,200 fee to cover pre-production expenses incurred by JoVE. If payment is not received by the completion of filming, production and publication of the Materials will be suspended until payment is received.

14. **Transfer, Governing Law.** This Agreement may be assigned by JoVE and shall inure to the benefits of any of JoVE's successors and assignees. This Agreement shall be governed and construed by the internal laws of the Commonwealth of Massachusetts without giving effect to any conflict of law provision thereunder. This Agreement may be executed in counterparts, each of which shall be deemed an original, but all of which together shall be deemed to be one and the same agreement. A signed copy of this Agreement delivered by facsimile, e-mail or other means of electronic transmission shall be deemed to have the same legal effect as delivery of an original signed copy of this Agreement.

A signed copy of this document must be sent with all new submissions. Only one Agreement is required per submission.

CORRESPONDING AUTHOR

| | | |
|--------------|---|-------------------------|
| Name: | Robert Rose | |
| Department: | Cardiac Sciences, Physiology and Pharmacology | |
| Institution: | University of Calgary | |
| Title: | Associate Professor | |
| Signature: |  | Date: December 19, 2018 |

Please submit a **signed** and **dated** copy of this license by one of the following three methods:

1. Upload an electronic version on the JoVE submission site
2. Fax the document to +1.866.381.2236
3. Mail the document to JoVE / Attn: JoVE Editorial / 1 Alewife Center #200 / Cambridge, MA 02140

Isolation of atrial myocytes from adult mice

Response to Review

Thank you for the additional feedback on our manuscript. We have addressed the remaining editorial points as summarized in our responses below. We have uploaded the revised manuscript as well as a version of the manuscript with our revisions tracked in red text.

Editorial Comments

1. Please take this opportunity to thoroughly proofread the manuscript to ensure that there are no spelling or grammar issues.

Thank you. We have thoroughly proofread the manuscript.

2. Please use h, min, s for time units.

These abbreviation have now been used throughout the manuscript.

3. Step 1.1: How much silicone elastomer is added? How many pins are inserted? Where to insert? Please specify.

This has been explained on line 109 in our revised manuscript.

4. Figure 1: Please add a short description of the figure in Figure Legend.

This has been done (see line 272 in revised manuscript).

TITLE:

Isolation of atrial myocytes from adult mice

AUTHORS AND AFFILIATIONS:

Hailey J. Jansen¹ and Robert A. Rose¹

¹Libin Cardiovascular Institute of Alberta, Department of Cardiac Sciences, Department of Physiology and Pharmacology, Cumming School of Medicine, University of Calgary, Calgary, Alberta, Canada

Corresponding Author:

Robert A. Rose

Email: robert.rose@ucalgary.ca

Email Addresses of Co-authors:

Hailey J. Jansen (hailey.jansen@ucalgary.ca)

KEYWORDS

Atria, cardiomyocyte, electrophysiology, patch-clamp, action potential, ionic currents

SUMMARY

This protocol is used to isolate single atrial cardiomyocytes from the adult mouse heart using a chunk digestion approach. This approach is used to isolate right or left atrial myocytes that can be used to characterize atrial myocyte electrophysiology in patch-clamp studies.

ABSTRACT

The electrophysiological properties of atrial myocytes importantly affect overall cardiac function. Alterations in the underlying ionic currents responsible for the action potential can cause pro-arrhythmic substrates that underlie arrhythmias, such as atrial fibrillation, that are highly prevalent in many conditions and disease states. Isolating adult mouse atrial cardiomyocytes for use in patch-clamp experiments has greatly advanced our knowledge and understanding of the cellular electrophysiology in the healthy atrial myocardium and in the setting of atrial pathophysiology. In addition, studies using genetic mouse models have elucidated the role of a vast array of proteins in regulating atrial electrophysiology. Here we provide a detailed protocol for the isolation of cardiomyocytes from the atrial appendages of adult mice using a combination of enzymatic digestion and mechanical dissociation of these tissues. This approach consistently and reliably yields isolated atrial cardiomyocytes that can then be used to characterize cellular electrophysiology by measuring action potentials and ionic currents in patch-clamp experiments under a number of experimental conditions.

INTRODUCTION

The atria, which are the thin walled, low pressure chambers of the heart that receive blood from the superior and inferior vena cavae as well as the pulmonary veins, are integral in normal cardiac physiology. Like other regions of the heart, the atria contain a number of cell types, including cardiomyocytes, fibroblasts, endothelial cells, vascular smooth muscle cells, and others. Atrial

myocytes are electrically excitable cells that play an essential role in the conduction of electrical signals through the heart, thereby ensuring proper atrial contraction during each heart beat¹. Electrical dysfunction in the atria can lead to a number of atrial specific arrhythmias such as atrial flutter and atrial fibrillation^{2,3}. These are highly prevalent, yet poorly understood, atrial arrhythmias that lead to significant morbidity and mortality. Atrial fibrillation can occur in association with genetic mutations, in association with aging or in the setting of acquired forms of heart disease, including hypertension, heart failure and diabetes^{2,4-6}. These conditions can alter the electrical properties of atrial myocytes which can create a substrate that increases the prevalence of arrhythmogenesis^{1,2}.

Normal electrical function in the atria, as well as atrial arrhythmogenesis, are importantly affected by the morphology of the action potential (AP) produced in atrial myocytes. The atrial AP is generated from the activity of a number of ionic currents, including the sodium current (I_{Na} , carried by $Na_v1.5$ channels), the L-type calcium current ($I_{Ca,L}$, carried by $Ca_v1.2$ and $Ca_v1.3$ channels), and several potassium currents including the ultra-rapid delayed rectifier potassium current (I_{Kur} , carried by $K_v1.5$ channels), the transient outward potassium current (I_{to} , carried by $K_v4.2$ and $K_v4.3$ channels), a steady state potassium current (I_{Kss} , carried by $K_v2.1$ channels), and the inward rectifier potassium current (I_{K1} , carried by $K_{ir2.1}$ channels)^{1,7,8}. Although they do not play a major role in the mouse atria, the rapid and slow components of the delayed rectifier K^+ current (I_{Kr} and I_{Ks}) also contribute to AP repolarization in some species⁷. Alterations in one or more of these ionic currents can significantly alter the electrical properties of atrial myocytes, which can lead to atrial arrhythmias. For example, a reduction in I_{Na} can slow conduction velocity across the atria by reducing the AP upstroke velocity. On the other hand, a reduction in repolarizing potassium currents or an increase in either $I_{Ca,L}$ or the late I_{Na} can result in the development of afterdepolarizations that can trigger spontaneous activity in the atria^{1,2,9}.

It is important to recognize that there are differences in AP morphology in different parts of the atrial myocardium that are likely due to differences in the expression or regulation of these underlying ion channels. For example, differences in AP duration between the right and left atria in association with differences in I_{to} current density have been well described¹⁰⁻¹³. Also, we have recently demonstrated that there are distinct patterns of electrical remodelling in the right and left atria of mice with chronic hypertension^{6,14}. The right atrial posterior wall also contains the sinoatrial node, which has its own distinct patterns of AP morphology and firing patterns¹⁵. The distinct properties of myocytes in each of these different parts of the atria can be investigated in detail using isolated myocytes from each of these regions.

There are different approaches that can be used to isolate atrial myocytes for patch-clamp electrophysiology studies¹⁶. One possibility is to use a retrograde perfusion approach where the heart is cannulated via the aorta for the delivery of enzymes. While this is a viable approach it can produce variability in atrial myocyte quality due to inconsistencies in perfusion of the atria. We have adopted a 'chunk' digestion approach for the isolation of atrial myocytes that eliminates the need for retrograde perfusion of the heart. Our approach uses a combination of enzymatic digestion and mechanical dissociation of atrial tissue that consistently and reliably yields large numbers of isolated atrial myocytes that are suitable for patch-clamp studies. While we describe

our approach here using atrial appendage tissue, the approach can be used on any region of the atrial myocardium (i.e. right or left atrial appendages, free walls, posterior walls) that the investigator chooses. This approach is ideal for studies of atrial myocyte electrophysiology in genetically modified mice, in mouse models of cardiovascular disease, or for studying the effects of pharmacological compounds^{5,6,17-19}.

PROTOCOL

All animal procedures were approved by The University of Calgary Animal Care and Use Committee and were conducted in accordance with the guidelines of the Canadian Council on Animal Care. The atrial myocyte isolation, images, and representative results described below were obtained from a 15 week old male wildtype C57Bl/6 mouse. We routinely use this protocol to isolate atrial myocytes from wildtype mice^{17,18}, mice carrying genetic mutations^{19,20} and mouse models of disease such as chronic hypertension^{6,14}. The protocol can be used similarly for male or female mice. We also utilize a similar version of this isolation procedure to isolate sinoatrial node myocytes from the mouse heart^{17,21-23}. A flowchart of this experimental protocol is located in Figure 1.

1. Preparation of Stock Solutions and Equipment

1.1. Prepare one dissecting dish by adding silicone elastomer according to the manufacturer's instructions. **Add enough of this silicone elastomer compound to cover the bottom of a 10 cm Petri dish to a depth of 1 cm.** Allow to cure and then insert 6 insect pins into the dish. This silicone dissecting dish can be reused for months and stored at room temperature.

1.2. Prepare three fire-polished Pasteur pipettes with an opening of 1 mm (small bore), 3 mm (medium bore), or 5 mm (large bore) in diameter as shown in Figure 2A. To make these pipettes score a Pasteur pipette and then snap along the score mark to produce an opening that is slightly larger than the desired bore size. Next, use a metal file to smooth the surface and then fire-polish this opening using an open flame. This will produce a smooth, fire-polished edge with an opening of the desired diameter. It is important that the opening is free of cracks and rough surfaces. These fire-polished pipettes can be stored at room temperature and reused for months.

1.3. Prepare stock solutions for Tyrode's pH 6.9 solution and Tyrode's pH 7.4 solution as listed in Table 1. Also prepare 10 mL each of 1 M MgCl₂, 1 M CaCl₂, and 100 mM CaCl₂. Use ultrapure water for all solutions and store at 4 °C for up to 2 months.

1.4. Prepare 1 L of modified Kraft-Brühe (KB) solution as indicated in Table 2. Use ultrapure water. Divide the solution into 20 mL aliquots and store at -20°C for up to 2 months.

2. Preparation of Solutions and Isolation Setup for Atrial Myocyte Isolation

2.1. Prepare 50 mL of a modified Tyrode's pH 7.4 solution as described in Table 3 in a 125 mL Erlenmeyer flask. Use the appropriate volume of 1 M CaCl₂ and 1 M MgCl₂ stock solutions to make this solution. Place the Erlenmeyer flask in a 35°C water bath until use, as shown in Figure 2B.

2.2. Prepare the modified Tyrode's pH 6.9 solution as described in Table 4 in a 50 mL tube. Use the 100 mM CaCl_2 stock solution to make this solution. Aliquot 2.5 mL of this solution into each of three 5 mL round bottom tubes. Place these tubes in a wire rack placed in a 35°C water bath until use, as shown in Figure 2B.

2.3. Prepare the enzyme solution as described in Table 5 in a 14 mL round bottom tube. To make the protease solution add 1 mg of protease per 100 μL ultrapure water. Place the tube containing this enzyme solution in the wire rack and incubate in a 35°C water bath until use.

2.4. Thaw one aliquot of modified KB solution in a 35°C water bath. Aliquot 2.5 mL KB solution into each of three 5 mL round bottom tubes and 2.5 mL into a 14 mL round bottom tube. Place these tubes in the wire rack and incubate in a 35°C water bath until use, as shown in Figure 2B.

2.5. Lay out the dissecting plate, dissecting tools, a Pasteur pipette, and the fire-polished pipettes as shown in Figure 2B.

3. Dissection of Mouse Atrial Appendage(s)

3.1. Inject the mouse with 0.2 mL of heparin (10 000 USP units/10mL) via intraperitoneal injection and wait 5 min for absorption.

3.2. Anesthetize the mouse using 3-4% isoflurane inhalation. When the mouse is fully anaesthetized and does not exhibit a toe pinch reflex, euthanize the mouse by cervical dislocation. Place the mouse on a paper towel or a cork board and tape the paws down to hold the mouse in place.

3.3. Wet the chest of the mouse with 70% ethanol. Remove the fur and skin covering the chest using curved scissors. Next, use rat tooth forceps to lift the sternum and then cut the diaphragm along the edge of the ribs. Remove the entire rib cage using curved scissors to expose the heart.

3.4. To remove the atrial appendage (right or left), gently lift the appendage using fine dissecting forceps and cut it out with spring scissors. Immediately transfer the atrial appendage to a silicone coated dissecting dish containing 20 mL of the warmed modified Tyrode's pH 7.4 solution described in step 2.1.

3.5. Place one dissecting pin at the top and one pin at the bottom of the opening of the atrial appendage. Using a pasture pipette, flush the atria with the warmed modified Tyrode's pH 7.4 solution to remove blood. Open the atrial appendage by cutting along the top and bottom edge of the atrial appendage. Next, pin the corners of the atrial appendage down to create a flat, rectangular piece of tissue, as shown in Figure 3A.

4. Isolation of Atrial Myocytes

Note: Steps in this section are all performed at 35°C, with tubes submerged in a 35°C water bath. Be careful when transferring tissue strips between round bottom tubes to ensure that only the tissue (and not the solution) is transferred between tubes.

4.1. Cut the atrial appendage into approximately 8-10 equal sized strips (approximately 0.7 mm in width) using spring scissors and fine forceps. An example of the strips of atrial tissue is shown in Figure 3B. Note that the strips contract once they are cut free from the main piece of tissue. Using the small bore fire-polished pipette, transfer the tissue strips into the first tube containing warmed modified Tyrode's pH 6.9 solution described in step 2.2. Wait 5 min.

4.2. Wash the tissue strips by transferring them to the second and then the third round bottom tube containing modified Tyrode's pH 6.9 solution prepared in step 2.2 using the medium bore fire-polished pipette.

4.2.1. To wash the tissue strips cap the 5 mL round bottom tube and gently invert the tube 3 times. Let the tissue strips settle to the bottom of the tube before transferring the tissue strips to the next tube using the medium bore fire-polished pipette.

4.3. Transfer the tissue strips into the enzyme solution described in step 2.3 using a medium bore fire-polished pipette and incubate for 30 min. Swirl the tube every 3-5 min to prevent the tissue strips from adhering together.

Note: At the beginning of the enzymatic digestion tissue strips settle quickly following swirling. At approximately 20 min of digestion the tissue strips begin to float in the enzymatic solution following swirling. During this time the atrial tissue strips also change in appearance from pale pink to white as they are digested.

4.4. After enzymatic digestion, perform three 2.5 mL KB solution washes in the 5 mL round bottom tubes prepared in step 2.4. For each wash gently invert the tube 3 times before moving the tissue to the next tube using the medium bore fire-polished pipette. Following the final wash transfer the strips into the 14 mL round bottom tube containing 2.5 mL KB solution. Wait 5 min.

4.5. Gently triturate the tissue for 7.5 min using the wide bore fire-polished pipette. This will mechanically dissociate the tissue strips and yield a cloudy solution filled with individual atrial myocytes (see accompanying video).

Note: During trituration the tissue becomes white and the solution becomes cloudy. The force of trituration, achieved by altering both the frequency and velocity of expelling the tissue strips from the wide bore fire-polished pipette, should be tailored to the individual isolation. If trituration is too gentle the cell yield will be low while trituration that is too harsh will yield many dead cells. Avoid bubbles while tritulating.

4.6. Fill the 14 mL round bottom tube containing the triturated tissue strips with KB solution to a final volume of 7-10 mL depending on the desired density of cells for experimental use. Place

this tube at room temperature for 1 h. Following this incubation period, cells can be used for a variety of experiments for up to 7 h. Cells can also be stored at 4°C for up to 7 h.

REPRESENTATIVE RESULTS

The atrial myocytes isolated using this protocol can be used to characterize the electrophysiological properties of these cells using the patch-clamp technique. Aliquots of atrial myocytes in KB solution can be added to the recording chamber of a standard patch-clamp apparatus and superfused with solutions appropriate for the kind of recording the experimentalist wishes to perform. Atrial myocytes isolated using this protocol are best used for electrophysiological studies within 6-7 h of isolation. Representative patch-clamp data from our laboratory is presented below.

Figure 4 illustrates examples of isolated atrial myocytes from normal mice prepared using the protocol above. Isolated atrial myocytes are typically on the order of 100 μm in length and 10 μm in width with clear striations. The capacitance of isolated atrial myocytes is typically 40-70 pF.

Figure 5A illustrates an example of an atrial myocyte AP recorded using the perforated patch-clamp technique in current clamp mode, as we have described previously^{6,19,20}. Summary data illustrating typical atrial myocyte AP parameters are provided in Table 6. Specifically, we present summary data for measurements of resting membrane potential (RMP), maximum upstroke velocity (V_{max}), overshoot (OS) and AP duration at 50% (APD₅₀), 70% (APD₇₀) and 90% (APD₉₀) repolarization time (Table 6). APs can also be recorded in the whole cell configuration¹⁴. The superfusion and pipette solutions for recording APs are available in Tables 7 and 8.

Figure 5B illustrates a representative family of Na^+ currents (I_{Na}) recorded in the whole cell configuration of the patch-clamp technique. These currents were recorded using 50 ms voltage clamp steps between -100 and +10 mV from a holding potential of -120 mV. We have described approaches and protocols for recording I_{Na} previously^{6,14,20}. A summary I_{Na} IV relationship is also presented in Figure 5B. Solutions used to record I_{Na} are presented in Tables 7 and 8.

Figure 5C illustrates a representative family of Ca^{2+} currents ($I_{\text{Ca,L}}$) recorded in the whole cell configuration of the patch-clamp technique. These currents were recorded using 250 ms voltage clamp steps between -60 and +80 mV from a holding potential of -70 mV. The experimental conditions that can be used to measure $I_{\text{Ca,L}}$ have been previously described^{17,18,20}. A summary $I_{\text{Ca,L}}$ IV relationship is also presented in Figure 5C. The solutions used to record $I_{\text{Ca,L}}$ are available in Tables 7 and 8.

Figure 5D illustrates a representative family of K^+ currents (I_{K}) recorded in the whole cell configuration of the patch-clamp technique. These currents were recorded from a holding potential of -80 mV using 500 ms voltage clamp steps between -120 mV and +80 mV, as we have described previously^{6,14}. The summary IV relationship for total I_{K} is also presented in Figure 5D. The solutions used to record I_{K} are available in Tables 7 and 8.

Using these approaches to record APs and major families of ionic currents, including Na^+ , Ca^{2+} and K^+ currents (as illustrated above), permits the investigator to rigorously interrogate atrial myocyte electrophysiology in a plethora of experimental conditions. Our laboratory has routinely employed these techniques to study atrial myocyte electrophysiology in normal mice, in mouse models of heart disease, and in genetically modified mice^{6,14,17-20}.

FIGURE AND TABLE LEGENDS

Figure 1. Flowchart for the atrial myocyte isolation protocol. Summary of the steps used to isolate atrial myocytes using this protocol.

Figure 2. Experimental setup and dissection tools for atrial myocyte isolation. A. A small bore fire-polished pipette with an opening 1 mm in diameter (left) is used for tissue transfer following dissection, a medium bore fire-polished pipette with an opening 3 mm in diameter (middle) is used to transfer tissue strips during the isolation, and a large bore fire-polished pipette with an opening 5 mm in diameter (right) is used for trituration of digested atrial tissue. B. Experimental setup for atrial myocyte isolation.

Figure 3. Image of the atrial appendage dissection. A. Representative bright field image of an excised atrial appendage cut open and pinned out. B. Representative bright field image of the atrial appendage cut into tissue strips of approximately 0.7 mm in width. Scale bar is 1 mm.

Figure 4. Images of isolated atrial myocytes. A. Brightfield image of isolated atrial myocytes immediately after isolation. Scale bar is 50 μm . B. Brightfield image of a single isolated atrial myocyte. Scale bar is 100 μm .

Figure 5. Representative patch-clamp data obtained from isolated atrial myocytes. A. Representative stimulated AP recording from an isolated atrial myocyte. Summary of AP parameters is presented in Table 6. Amphotericin B (200 $\mu\text{g}/\text{mL}$) was added to the pipette solution to permeabilize the cellular membrane. B. Representative I_{Na} recordings (left) and summary I_{Na} IV curve (right) from an isolated atrial myocyte. Nifedipine (10 μM) was added to the modified Tyrode's solution to block $I_{\text{Ca,L}}$ when recording I_{Na} . C. Representative $I_{\text{Ca,L}}$ recordings (left) and summary $I_{\text{Ca,L}}$ IV curve (right) from an isolated atrial myocyte. D. Representative I_{K} recordings (left) and summary I_{K} IV curve (right) from an isolated atrial myocyte. The solutions used to record each of these currents are listed in Tables 7 and 8. Summary IV curves are averaged measurements from 10 atrial myocytes isolated from a 15 week old male wildtype C57Bl/6 mouse.

Table 1: Stock Tyrode's pH 7.4 and stock Tyrode's pH 6.9 solutions. Composition of stock Tyrode's solutions (pH 7.4 and pH 6.9) that can be made in advance and stored at 4°C for up to 2 months.

Table 2: Modified KB solution. Recipe for modified KB solution that can be made in advance, aliquoted, and stored at -20°C for up to 2 months.

Table 3: Modified Tyrode's pH 7.4 solution with glucose, magnesium, calcium, and heparin.
Composition of modified Tyrode's pH 7.4 solution used for the atrial tissue dissection. This solution should be made fresh and kept in a 35°C water bath until use.

Table 4: Modified Tyrode's pH 6.9 solution containing glucose, taurine, BSA, and low calcium.
Composition of the modified Tyrode's pH 6.9 solution used for the atrial myocyte isolation. This solution should be made fresh and kept in a 35°C water bath until use.

Table 5: Enzymatic solution. Composition of the enzymatic solution used to enzymatically digest atrial tissue strips. This solution should be made fresh and kept in a 35°C water bath until use.

Table 6: Summary of AP parameters from isolated atrial myocytes. Data are presented as mean \pm SEM, $n = 10$ atrial myocytes isolated from a 15 week male wildtype C57Bl/6 mouse.

Table 7: Composition of Tyrode's solutions used during patch-clamp experiments. Composition of the Tyrode's solutions used to record APs, I_{Na} , $I_{Ca,L}$, and I_K from isolated atrial myocytes.

Table 8: Composition of internal pipette solution used during patch-clamp experiments. Composition of the pipette filling solutions used to record APs, I_{Na} , $I_{Ca,L}$, and I_K from isolated atrial myocytes.

DISCUSSION

Our lab routinely uses this protocol to isolate mouse atrial myocytes for use in patch-clamp experiments in order to investigate the effects of different forms of cardiovascular disease, genetic mutations, or pharmacological compounds on atrial myocyte electrophysiology. Although highly reproducible, the quality of the data obtained from the isolated atrial myocytes depends on the quality of the isolation. In addition, reintroduction of calcium following the atrial myocyte isolation will result in cell death for a population of isolated myocytes due to the calcium paradox¹⁶. Accordingly, isolating viable, high-quality atrial myocytes using this approach requires practice and optimization at multiple points throughout the isolation. Once optimized, it is estimated that between 70-90% of the total atrial myocytes isolated using this approach will be both calcium tolerant and rod shaped. The steps requiring the most practice and optimization are discussed below.

The speed and efficiency of the dissection will have downstream effects on the quality of the isolated cells. It is important to take time to ensure all blood is removed from the atrial tissue and that tissue strips are cut to a similar size. It should take approximately 5 min to remove the atrial appendage, cut the tissue into strips, and transfer the tissue strips into the first tube of modified Tyrode's pH 6.9 solution. However, if this step takes too long the quality of the tissue may be compromised.

It is also important that tissue strips are cut to a uniform size within an isolation and between hearts. If tissue strips are too large or too small, or if they are not uniform within an isolation, this can cause problems during both enzymatic digestion and trituration. This is because small

strips will be more thoroughly digested and large strips will be under digested. It is equally important to consider the genotype and disease setting being studied as the size of the atrial appendage can vary between animals. For example, hypertrophic hearts have larger atrial appendages compared to healthy hearts, and therefore the experimenter can cut more strips in hypertrophic hearts compared to normal sized hearts. Accordingly, optimizing the size of the cut tissue strips and applying these dimensions to each individual atrial appendage will greatly improve the reproducibility of myocyte isolations between experimental conditions.

The delicate balance between the enzymatic digestion and mechanical dissociation is key to a successful atrial myocyte isolation using this protocol. If tissue is not adequately swirled during the enzymatic digestion the individual tissue strips will tend to clump and stick together, which will limit the effectiveness of the enzymatic digestion. If agitated too frequently or vigorously this can damage the atrial tissue, which will result in the isolation of nonviable cells. Mechanical dissociation of isolated atrial myocytes from tissue strips during trituration is the most critical step to practice and optimize using this approach to isolate atrial myocytes. If trituration is too gentle cell yield will be low. On the other hand, if trituration is too harsh then an abundance of non-viable myocytes will be isolated and the quality of data obtained during patch-clamp experiments will be jeopardized. In addition, the composition of the atria can affect the isolation. For example, if tissue is fibrotic the enzymatic digestion and the trituration steps may need to be modified. It is therefore important to take the time to develop the skills required to obtain high quality cells during trituration that can be used for patch-clamp experiments.

As with all experimental techniques there are limitations. This technique requires practice in order to reproducibly isolate viable, high quality myocytes, which in turn will impact the feasibility of any experiments to be performed using these myocytes. This approach is also terminal and atrial myocytes isolated using this approach can be used on the day of the isolation only. Our lab uses the cells within 6-7 h of isolation.

This approach of isolating atrial cardiomyocytes has several applications. For example, this approach can be modified to isolate atrial myocytes (as well as cardiac fibroblasts) from other species including human atrial tissue biopsies. In addition, a benefit to using this chunk method for atrial myocyte isolation (in contrast to retrograde perfusion of the heart) is that it can be modified to isolate cardiomyocytes from other regions of the heart, such as the sinoatrial node or other specific regions of the atrial myocardium, or encompass the entire supraventricular region of the heart. Our lab uses atrial cardiomyocytes for patch-clamp experiments to measure action potentials and ionic currents, although this approach need not be limited to this technique. For example, isolated myocytes can be used to investigate alterations in calcium transients and contractility in a variety of experimental settings. Atrial cardiomyocytes can also be used in immunofluorescence studies to study the location of proteins or structures of interest. Accordingly, this approach is highly versatile with many possible applications.

ACKNOWLEDGEMENTS

This work is supported by operating grants from the Canadian Institutes of Health Research (MOP 93718, 142486) and the Heart and Stroke Foundation of Canada to R.A. Rose. H.J. Jansen is the recipient of a Killam Postdoctoral Fellowship.

DISCLOSURES

None.

REFERENCES

1. Bartos, D. C., Grandi, E. & Ripplinger, C. M. Ion Channels in the Heart. *Comprehensive Physiology*. **5** (3), 1423-1464 (2015).
2. Heijman, J., Voigt, N., Nattel, S. & Dobrev, D. Cellular and molecular electrophysiology of atrial fibrillation initiation, maintenance, and progression. *Circulation Research*. **114** (9), 1483-1499 (2014).
3. Jalife, J. Mechanisms of persistent atrial fibrillation. *Current Opinion in Cardiology*. **29** (1), 20-27 (2014).
4. Nattel, S., Maguy, A., Le Bouter, S. & Yeh, Y. H. Arrhythmogenic ion-channel remodeling in the heart: heart failure, myocardial infarction, and atrial fibrillation. *Physiological Reviews*. **87** (2), 425-456 (2007).
5. Jansen, H. J. *et al.* Atrial structure, function and arrhythmogenesis in aged and frail mice. *Scientific Reports*. **7** 44336 (2017).
6. Jansen, H. J. *et al.* Distinct patterns of atrial electrical and structural remodeling in angiotensin II mediated atrial fibrillation. *Journal of Molecular and Cellular Cardiology*. **124** 12-25 (2018).
7. Nerbonne, J. M. & Kass, R. S. Molecular physiology of cardiac repolarization. *Physiological Reviews*. **85** (4), 1205-1253 (2005).
8. Grant, A. O. Cardiac ion channels. *Circulation: Arrhythmia and Electrophysiology*. **2** (2), 185-194 (2009).
9. Schmitt, N., Grunnet, M. & Olesen, S. P. Cardiac potassium channel subtypes: new roles in repolarization and arrhythmia. *Physiological Reviews*. **94** (2), 609-653 (2014).
10. Lomax, A. E., Kondo, C. S. & Giles, W. R. Comparison of time- and voltage-dependent K⁺ currents in myocytes from left and right atria of adult mice. *American Journal of Physiology Heart and Circulatory Physiology*. **285** (5), H1837-1848 (2003).
11. Li, D., Zhang, L., Kneller, J. & Nattel, S. Potential ionic mechanism for repolarization differences between canine right and left atrium. *Circ Res*. **88** (11), 1168-1175 (2001).
12. Wirth, K. J. & Knobloch, K. Differential effects of dofetilide, amiodarone, and class Ic drugs on left and right atrial refractoriness and left atrial vulnerability in pigs. *Naunyn Schmiedeberg's Archives of Pharmacology*. **363** (2), 166-174 (2001).
13. Qi, A., Yeung-Lai-Wah, J. A., Xiao, J. & Kerr, C. R. Regional differences in rabbit atrial repolarization: importance of transient outward current. *American Journal of Physiology*. **266** (2 Pt 2), H643-649 (1994).
14. Jansen, H. J. *et al.* NPR-C (Natriuretic Peptide Receptor-C) Modulates the Progression of Angiotensin II-Mediated Atrial Fibrillation and Atrial Remodeling in Mice. *Circulation: Arrhythmia and Electrophysiology*. **12** (1), e006863 (2019).

15. Mangoni, M. E. & Nargeot, J. Genesis and regulation of the heart automaticity. *Physiological Reviews*. **88** (3), 919-982 (2008).
16. Voigt, N., Pearman, C. M., Dobrev, D. & Dibb, K. M. Methods for isolating atrial cells from large mammals and humans. *Journal of Molecular and Cellular Cardiology*. **86** 187-198 (2015).
17. Springer, J. *et al.* The natriuretic peptides BNP and CNP increase heart rate and electrical conduction by stimulating ionic currents in the sinoatrial node and atrial myocardium following activation of guanylyl cyclase-linked natriuretic peptide receptors. *Journal of Molecular and Cellular Cardiology*. **52** (5), 1122-1134 (2012).
18. Hua, R., Adamczyk, A., Robbins, C., Ray, G. & Rose, R. A. Distinct patterns of constitutive phosphodiesterase activity in mouse sinoatrial node and atrial myocardium. *PLoS One*. **7** (10), e47652 (2012).
19. Egom, E. E. *et al.* Impaired sinoatrial node function and increased susceptibility to atrial fibrillation in mice lacking natriuretic peptide receptor C. *Journal of Physiology*. **593** (5), 1127-1146 (2015).
20. Hua, R. *et al.* Effects of Wild-Type and Mutant Forms of Atrial Natriuretic Peptide on Atrial Electrophysiology and Arrhythmogenesis. *Circulation: Arrhythmia and Electrophysiology*. **8** (5), 1240-1254 (2015).
21. Krishnaswamy, P. S. *et al.* Altered parasympathetic nervous system regulation of the sinoatrial node in Akita diabetic mice. *Journal of Molecular and Cellular Cardiology*. **82** 125-135 (2015).
22. Mackasey, M. *et al.* Natriuretic peptide receptor C (NPR-C) protects against angiotensin II mediated sinoatrial disease in mice. *JACC Basic to Translational Science*. doi **10.1016/j.jacbts.2018.08.004** (2018).
23. Azer, J., Hua, R., Vella, K. & Rose, R. A. Natriuretic peptides regulate heart rate and sinoatrial node function by activating multiple natriuretic peptide receptors. *Journal of Molecular and Cellular Cardiology*. **53** (5), 715-724 (2012).