

# Journal of Visualized Experiments

## An Enzyme-Free Method for Isolation and Expansion of Human Adipose-Derived Mesenchymal Stem Cells

--Manuscript Draft--

<b>Article Type:</b>	Invited Methods Article - JoVE Produced Video
<b>Manuscript Number:</b>	JoVE59419R2
<b>Full Title:</b>	An Enzyme-Free Method for Isolation and Expansion of Human Adipose-Derived Mesenchymal Stem Cells
<b>Keywords:</b>	Mesenchymal stem cells; adipose-derived stem cells; adipose stem cells; stromal vascular fraction; enzyme free isolation; adipose explant; regenerative medicine; bench to bedside
<b>Corresponding Author:</b>	Lauren S. Sherman Rutgers The State University of New Jersey Newark, NJ UNITED STATES
<b>Corresponding Author's Institution:</b>	Rutgers The State University of New Jersey
<b>Corresponding Author E-Mail:</b>	shermala@njms.rutgers.edu
<b>Order of Authors:</b>	Lauren S. Sherman Pranela - Rameshwar Alexandra - Conde-Green Edward S. Lee
<b>Additional Information:</b>	
<b>Question</b>	<b>Response</b>
Please indicate whether this article will be Standard Access or Open Access.	Open Access (US\$4,200)
Please indicate the <b>city, state/province, and country</b> where this article will be <b>filmed</b> . Please do not use abbreviations.	Newark, NJ, USA

**TITLE:**

An Enzyme-Free Method for Isolation and Expansion of Human Adipose-Derived Mesenchymal Stem Cells

**AUTHORS AND AFFILIATIONS:**

Lauren S. Sherman<sup>1,2</sup>, Alexandra Condé-Green<sup>3</sup>, Edward S. Lee<sup>3</sup>, Pranela Rameshwar<sup>1,2</sup>

<sup>1</sup>Department of Medicine, Division of Hematology/Oncology, New Jersey Medical School, Rutgers Biomedical and Health Sciences, Newark, NJ, USA

<sup>2</sup>Rutgers School of Graduate Studies at New Jersey Medical School, Rutgers Biomedical and Health Sciences, Newark, NJ, USA

<sup>3</sup>Department of Surgery, Division of Plastic Surgery, New Jersey Medical School, Rutgers Biomedical and Health Sciences, Newark, NJ, USA

**Email Addresses:**

Lauren S. Sherman shermala@njms.rutgers.edu

Alexandra Condé-Green condegala@njms.rutgers.edu

Edward S. Lee edwarlee@njms.rutgers.edu

**Corresponding Author:**

Pranela Rameshwar

Email Address: rameshwa@njms.rutgers.edu

**KEYWORDS:**

mesenchymal stem cells, adipose-derived stem cells, adipose stem cells, stromal vascular fraction, enzyme free isolation, adipose explant, regenerative medicine, bench to bedside

**SHORT ABSTRACT:**

This protocol provides an enzyme-free method for isolating mesenchymal stem cells from abdominoplasty and lipoaspirate samples using an explant method. The absence of harsh enzymes or centrifugation steps provides for clinically relevant stem cells that can be used for studies in vitro or transferred back to the clinic.

**LONG ABSTRACT:**

Mesenchymal stem cells (MSCs) are a population of multipotent cells that can be isolated from various adult and fetal tissues, including adipose tissue. As a clinically relevant cell type, optimal methods are needed to isolate and expand these cells in vitro. Most methods to isolate adipose-derived MSCs (ASCs) rely on harsh enzymes, such as collagenase, to digest the adipose tissue. However, while effective at breaking down the adipose tissue and yielding a high ASC recovery, these enzymes are expensive and can have detrimental effects on the ASCs – including the risks of using xenogeneic components in clinical applications. This protocol details a method to isolate ASCs from fresh lipoaspirate and abdominoplasty samples without enzymes. Briefly, this method relies on mechanical disassociation of any bulk tissue followed by an explant-type culture system. The ASCs are permitted to migrate out of tissue and onto the

tissue culture plate, after which the ASCs can be cultured and expanded in vitro for any number of research and/or clinical applications.

## **INTRODUCTION:**

Mesenchymal stem cells (MSCs) are a class of multipotent adult stem cells that can be isolated from various adult and fetal tissues, including from adipose tissue. These cells are an attractive cell type for both basic research and clinical applications due to their plasticity to differentiate into cells of all germ layers in vitro, cross allogeneic barriers, home to areas of inflammation, and suppress inflammation (reviewed in Sherman, et al.<sup>1</sup>). Adipose-derived MSCs (ASCs) are particularly appealing due to their ease of obtainment, as adipose tissue is generally considered discard tissue following routine liposuction and abdominoplasty procedures. However, once obtained, the samples are generally subjected to harsh conditions – either enzymatic condition or centrifugation – in order to isolate the ASCs<sup>2,3</sup>. This method illustrates a simple procedure for isolating ASCs using an explant method, in the absence of harsh enzymatic or centrifugation steps.

The most common method of isolating ASCs consists of washing an adipose sample, enzymatically digesting the sample with collagenase, centrifuging the sample, and finally lysing the red blood cells prior to culturing the ASCs<sup>4</sup>. While efficient at isolating a high yield of ASCs, the use of xenogeneic components (e.g., enzymatic digestion with collagenase) is considered more than “minimally manipulated” by the U.S. Food and Drug Administration, and may pose risks such as immune reaction, prohibiting the cells’ use in the clinic<sup>5,6</sup>. To minimize the risks of xenogeneic components, many groups have suggested non-animal derived, manufactured enzymes to digest the adipose tissue. However, these enzymes are still harsh, and can alter the cell phenotype<sup>7</sup>.

Other methods of isolating ASCs include high-speed centrifugation, using forces as high as 1200 x g, and vortexing to isolate the ASCs<sup>8</sup>. Even forces as low as 400 x g were sufficient in isolating viable ASCs<sup>9</sup>. While these cells do produce a large quantity of viable cells, many protocols failed to proliferate beyond 14 days<sup>8</sup>. Further, mechanical isolation yields fewer recovered cells than enzymatic digestion, but a higher proportion of isolated cells were ASCs as compared to other cells endogenous to adipose tissue at passage 0<sup>10</sup>.

The isolation of a purer, more viable population of ASCs in less time, coupled with the cost and risks of xenogeneic components, makes enzymatic digestion less and less appealing for translation to the clinic. While mechanical isolation is initially a favorable approach, there is significant disparity in the methods used, and the volume of tissue processed is limited to the size of the specialized centrifugal units, and can be dependent on operator consistency<sup>2</sup>.

While both enzymatic digestion and centrifugation quickly yield a high volume of ASCs, these isolated cells show phenotypic changes, yielding questions about their behavior when returned to a patient<sup>2</sup>. An explant-based method of ASC isolation, as described in this protocol, is thus being employed by some groups, whereby the ASCs migrate out of small pieces of solid adipose

tissue<sup>3,11,12</sup>. This migration is likely an effect of the cells being drawn to the nutrient rich media. Like other populations of MSCs, ASCs adhere to plastic, and survive and proliferate in the used tissue culture media (components below), permitting their isolation from the other cell types from the adipose tissue. While fewer cells are initially recovered – often taking > 1 week until cells are visible on the tissue culture plate – these unmanipulated ASCs will proliferate in vitro, permitting expansion of the cells to clinically relevant volumes<sup>11-13</sup>.

## **PROTOCOL:**

The use of lipoaspirate and abdominoplasty samples has been approved by The Institutional Review Board (IRB) of Rutgers University – Newark Campus.

### **1 Preparation of tissue culture media**

1.1 Sterilely prepare 500 mL of tissue culture media prior to isolating ASCs. To prepare the culture media, add 10% defined fetal calf serum (FCS) and Penicillin-Streptomycin (10,000 U/100mL) to Dulbecco's minimal essential media (DMEM) with high glucose and 2 mM L-glutamine. The media can be stored at 4 °C for up to 3 weeks and should always be used warm (between room temperature to 37 °C).

1.1.1 If a different media is preferred for culture of the stem cells, prepare that media instead.

### **2 Isolation of ASCs from adipose tissue**

2.1 Obtain lipoaspirates or abdominoplasty sample(s). Following IRB approval, obtain such samples as discard tissue following various surgical procedures. Transport the lipoaspirates to the laboratory in whichever vessel the surgeon removed the tissue; transport abdominoplasty samples in an operating room specimen bag or container.

2.2 Store the sample(s) at room temperature for up to 6 h or at 4 °C for up to 24 h if not processing immediately. Tissue samples processed beyond the aforementioned times will likely have a diminished cell yield. Keep abdominoplasty samples moist by the addition of 1x sterile phosphate buffered saline.

2.3 From this point onwards, conduct all steps in a laminar flow hood under aseptic conditions. Wear gloves for personal protection. Keep 10% bleach, 70% ethanol, and paper towels nearby to quickly clean up any biological spills. Dispose of any excess tissue as biomedical waste.

2.4 Mince the samples into < 1 mm pieces. If the abdominoplasty block is too large to work with, cut a manageable size of tissue off of the block prior to mincing. Transfer the abdominoplasty tissue to the lid of a sterile 100 mm plate. Use a sterile needle to hold a piece

of tissue in place and use a sterile scalpel to mince the pieces off by either cutting or gently shredding off of the bulk tissue.

2.4.1 This step is generally not needed for lipoaspirates. However, if large tissue chunks are observed in the lipoaspirate, remove such chunks with sterile forceps and process as above.

2.5 Transfer the tissue to a fresh tube and invert or shake the sample 5-6 times to ensure mixing of all layers. Optional: if the lipoaspirate has fully settled, remove and discard the oil layer prior to mixing.

2.6 Transfer 2.5-5 mL of tissue to a 100 mm vacuum-gas plasma treated tissue culture plate (**Table of Materials**). Measure the volume of the sample by pouring into a fresh centrifuge tube. If necessary, use a sterile spatula to assist with transferring the tissue.

2.7 Add an equivalent volume of tissue culture media to the plate. Gently swirl the plate to mix the contents.

2.8 Incubate the plates at 37 °C in 5% CO<sub>2</sub> until a sufficient number of cells are seen on the base of the plate. Over time, the cells will migrate from within the tissue onto the plate surface, at which point they will adhere to the plastic. As they exit the tissue, the cells will appear as small clusters around the tissue pieces.

2.9 Every 24 h, remove as much fluid as possible and replace with a similar amount of media. Leave the pieces of tissue in place, if possible.

2.10 Once a sufficient number of cells are noted on the plate (> 10 clusters of > 15-25 cells on the plate) or after 7 days, whichever is sooner, remove all remaining pieces of tissue.

2.11 Culture the ASCs in tissue culture media until they reach 70% confluency or until the clusters become dense (> 5 dense clusters of cells on the plate, each with a diameter of approximately > 500 µm), at which point the cells are to be passaged.

### **3 Culture of ASCs**

3.1 Passage the ASCs when the parent plate reaches approximately 70% confluency. Take care to avoid over confluency of the ASC cultures.

3.2 Gently rinse the plate with 1x phosphate buffered saline and trypsinize the adherent cells. To trypsinize the cells, aspirate the phosphate buffered saline and add 1 mL of Trypsin with 0.25% EDTA to each plate and incubate at 37 °C for 5 min. After 5 min, confirm de-adherence by microscopy. If the cells are still adherent, return the cells to the incubator for an additional 5 min.

3.3 Add a small amount of media (approximately 25% of total trypsin volume) to the plate to deactivate the trypsin, and gently wash the base of the plate using the media/trypsin. To wash the plate, hold the plate at a slight angle and gently pipette the media/trypsin from the top of the plate downwards, loosening any weakly attached cells from the plate. The cells can be re-plated at a 1:3 ratio or seeded at a density of 120,000-500,000 cells per plate.

3.3.1 If seeding based on cell count, transfer the trypsin/media from the plate into a conical centrifuge tube, and pellet the cells by centrifugation at 300 x *g* for 7 min. Resuspend the cells in tissue culture media (approximately 1 mL per initial plate) and count the cells prior to seeding. To count the cells, transfer 10  $\mu$ L of the cell suspension into the hemocytometer and count the cells present in the 4 x 4 quadrant at each corner of the grid. Average these values together and multiply the value by  $10^4$  to calculate the cell number.

3.3.2 Add media to the plate prior to seeding the cells. Add the cells in a dropwise manner and then swirl the plate to ensure even distribution across the plate.

NOTE: After 3 passages, the adherent cells should appear asymmetrical and spindle shaped. ASC phenotype and behavior can be confirmed using flow cytometry and differentiation assays.

3.4 Confirmation of ASC phenotype and behavior using flow cytometry and differentiation assays

3.4.1 Flow cytometry

3.4.1.1 Collect and pellet the cells as described above. Wash the pelleted cells with 1x phosphate buffered saline and label the cells with the manufacturer recommended volumes of antibody. A detailed protocol for flow cytometry, a common laboratory procedure, can be found here<sup>12,14,15</sup>.

3.4.1.2 Select surface marker panels from the following to confirm the ASC phenotype: negative for CD14, CD31, CD34, CD45, and CD106; and positive for CD29, CD36, CD44, CD73, CD90, and CD105<sup>16-19</sup>. The presence of CD36 and absence of CD106 discern ASCs from bone marrow-derived MSCs<sup>20</sup>.

3.4.2 Differentiation Assays: Confirm multilineage differentiation using an MSC differentiation kit. Kits are available from multiple manufacturers to confirm adipogenic, osteogenic, and chondrogenic differentiation capacity. Change the kit-provided media every 3-4 days as per the manufacturer's protocols for 3 weeks or until morphological differentiation is observed.

3.5 Culture the cells for multiple passages; the number of passages needed will depend on the application(s). At each passage, confirm the MSC cell morphology and phenotype using the aforementioned cell surface markers, and ensure multilineage differentiation capacity has not been lost. While the expansion potential differs among donors, most samples can be expanded for up to 6-9 passages.

3.6 Cryopreserve the cells and store in liquid nitrogen for future use.

## 4 Cryopreservation of ASCs

4.1 Prepare 10 mL of freezing solutions A and B.

4.1.1 For freezing solution A, add 20% FCS to DMEM with high glucose.

4.1.2 For freezing solution B, add 20% FCS and 20% dimethyl sulfide (DMSO) to DMEM with high glucose.

4.2 Pellet the cells by centrifuging at 300 x *g* for 5 min. Resuspend the cells in a small volume of freezing solution A and count the cells using a hemocytometer as in step 3.3.1.

4.3 Calculate the final volume that the cells will be resuspended in to reach a final cell concentration of 500,000-1,000,000 cells/mL. Use freezing solution A to resuspend the pellet in 50% of that final volume. Slowly add an equal volume of freezing solution B dropwise while agitating the tube to reach the final cell concentration.

4.4 Immediately freeze the cells in 1-2 mL cryovials. Freeze the cryovials in a controlled rate freezer or in a freezing container placed at -80 °C, which decreases the temperature by 1 °C/min. Following the controlled freeze (overnight for a freezing container), transfer the cells to liquid nitrogen for long term storage.

## REPRESENTATIVE RESULTS:

Using the method detailed here, ASCs were successfully isolated from lipoaspirate and abdominoplasty samples (**Figure 1**). After three passages, the isolated cells were found to have an MSC morphology (asymmetrical, spindle shape) and phenotype, similar to ASCs following enzymatic digestion (**Figure 2**). Prior studies from our group and others have shown these ASCs to differentiate into adipocytes, osteocytes, and neurons like other MSCs, including ASCs isolated by other means<sup>11,21</sup>.

In most cases, ASCs migration onto the tissue culture plate can be visualized within 3-5 days by bright field microscopy. However, in some cases, only sparse cells will be visible after 7 days. In rare cases, the cells will not migrate onto the plate and/or will not proliferate up until the third passage. This outcome generally correlates with a delay in processing the tissue sample.

## FIGURE AND TABLE LEGENDS:

**Figure 1: Schematic representation of ASC isolation from abdominoplasty and lipoaspirate samples.** Abdominoplasty and lipoaspirate samples were obtained as discard tissue following routine surgical procedures. Abdominoplasty samples were shredded, after which either abdominoplasty or lipoaspirate samples were plated as explants in tissue culture media. The

ASCs migrated out of the tissue, towards the nutrient rich media. After 1 week, the explants were removed and ASCs cultured for downstream experimentation and/or clinical application.

**Figure 2. Isolated ASCs with an MSC morphology and phenotype.** ASCs isolated by the enzyme-free, explant method have an MSC morphology and phenotype at passage 3. **(A)** Like other MSCs, these ASCs have an asymmetrical, spindle shape, whether isolated by explant or enzymatic method (e.g., collagenase). The ASCs isolated using the enzyme method yield a longer, narrower morphology as compared to the explant isolated ASCs; the latter closer resemble MSCs derived from other enzyme-free isolation methods, such as bone marrow derived-MSCs. **(B)** Like other MSCs, the explant isolated ASCs are negative for CD45 and positive for CD73, CD90, and CD105.

## DISCUSSION:

ASCs are an attractive source of MSCs due to the easy access of the tissue. For both clinical and research applications, scientists must bear in mind donor variability when isolating and culturing these cells. For reasons yet to be elucidated, MSCs from different donors show different capacities to proliferate in vitro, which will subsequently affect the ASC's migration out of the adipose explant and proliferation capacity. While variability can be observed in the time it takes for the ASCs isolated from these enzyme-free explants to reach confluency, it was rare for a sample not to proliferate in vitro.

Beyond donor variability, the most likely source of failure of the cells to migrate out of the tissue and/or proliferate in vitro is the length of time that the tissue was stored prior to processing. When the samples were allowed to sit for > 12 h prior to processing or were not kept moist between harvesting and processing, poorer migration and proliferation rates were observed. The only samples that frequently failed to proliferate were abdominoplasty samples that were not kept moist with a saline solution: in these cases, the tissue in the center of the tissue block was often moist enough to process, but occasionally needed to be discarded. It is thus critical to keep the tissue moist from time of harvest through processing.

In cases where ASCs are not observed on the plate at the 1 week mark, the adipose explants should still be removed from the tissue culture plates lest tissue necrosis occur. Sometimes there are too few cells to easily identify, but those few cells will be capable of expanding within the culture system. If the cells are still not observed at 3 weeks, the isolation should be considered failed.

In some cases, particularly of abdominoplasty, it is not possible to obtain a truly aseptic sample due to the limitations within the surgical arena. If it is not possible to use a sterile vessel to transport the tissue from the operating room to a laminar flow hood, removing the outer 1 cm of the tissue is generally sufficient to prevent microorganism contamination. If the abdominoplasty sample is attached to skin, the skin can be wiped with 70% ethanol to sterilize that surface prior to mincing the adipose tissue.



During the mincing process, it is critical that the tissue is minced into small, fine pieces. If the explants are too large, there will be insufficient surface area for the ASCs to migrate out of the tissue and onto the plate. Further, it is critical that the tissue does not remain in the plate any longer than necessary lest the tissue become necrotic.

A limitation of this method is the use of an enzyme (in the described protocol, trypsin) to detach the ASCs during the tissue culture process. Other non-animal derived enzymes, such as Accutase, can be replaced to remove the need for animal derived products, however, this will increase the cost of the tissue culture. For this reason, among others, numerous groups are investigating non-two-dimensional tissue culture methods such as bioreactors and scaffold-based systems to increase MSC growth potential while minimizing the need to detach the cells from their substrate<sup>22</sup>.

When moving ASCs to the clinic, a major limitation of the explant isolation method is the reliance on a good manufacturing practice (GMP) level tissue culture facility, which many medical centers lack. In these cases, any of the self-enclosed commercially available enzyme- or centrifugation-based methods would need to be employed. However, as GMP facilities become more prevalent, this effect is expected to be limited. In the meantime, even such facilities lacking GMP tissue culture facilities can consider using the explant method for studying ASCs in vitro: the less manipulation, the more akin these cells are to their in vivo counterparts<sup>11</sup>.

This method provides a simple way of isolating ASCs from adipose tissue – both lipoaspirates and abdominoplasties – in the absence of harsh enzymes or centrifugation steps. While the initial yield of ASCs is lower than that of other methods, the ASCs will proliferate in vitro, minimizing the effect of the lower initial yield. The lack of excessive or forceful manipulation makes ASCs isolated in such a manner particularly relevant, since there are fewer questions (i.e., whether the observed effects are due to the cells themselves or to the cells' manipulation during the isolation process).

#### **ACKNOWLEDGMENTS:**

The authors have no acknowledgements

#### **DISCLOSURES:**

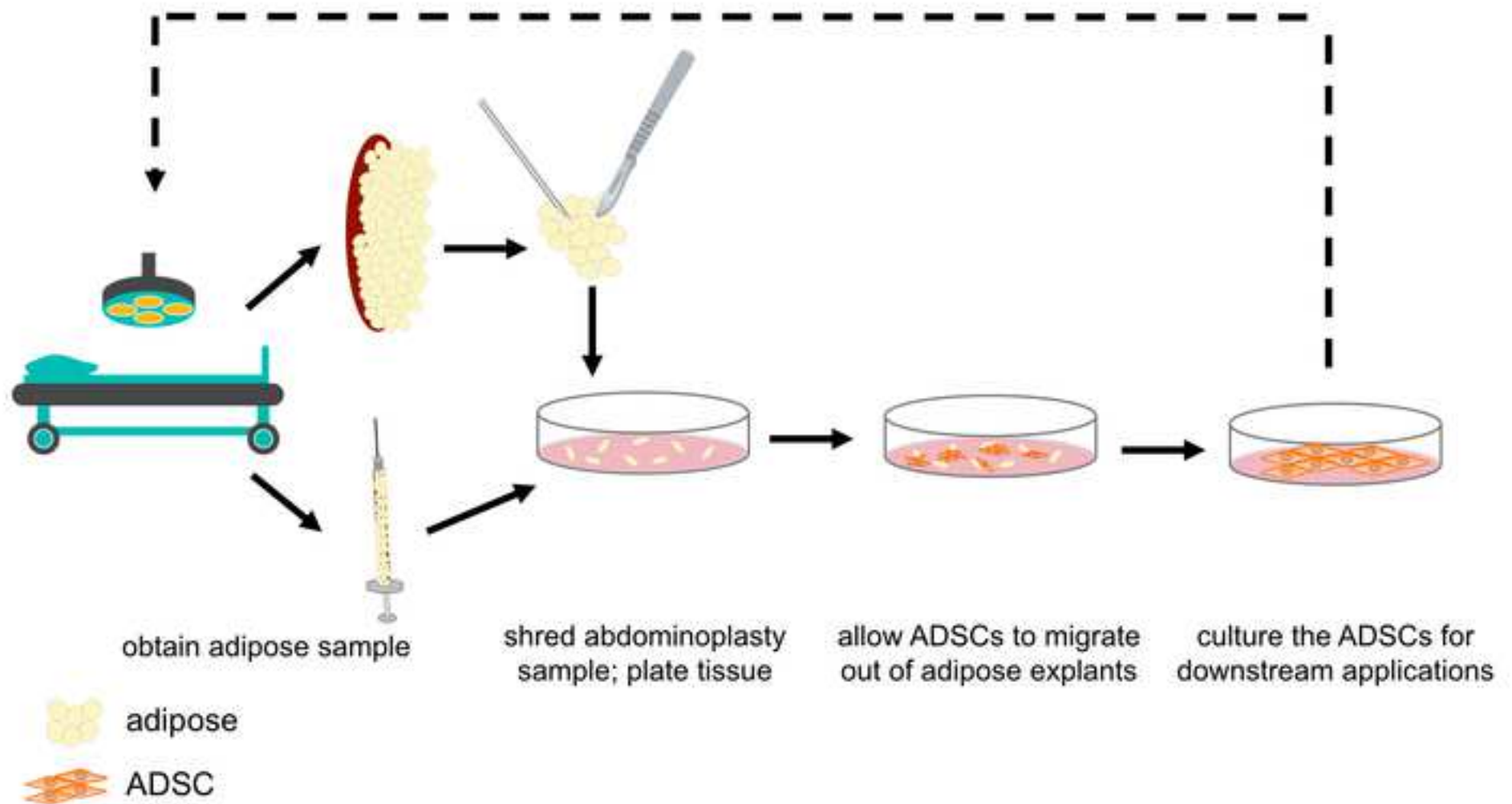
The authors have nothing to disclose

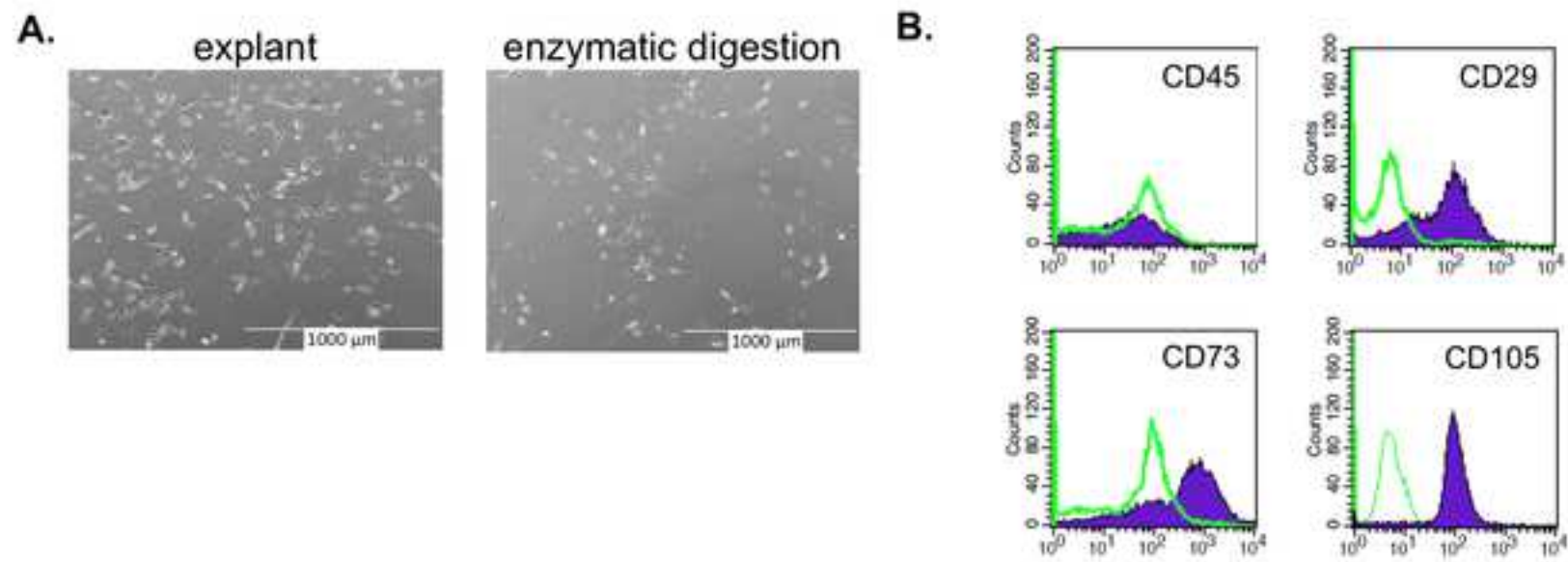
#### **REFERENCES:**

- 1 Sherman, L. S., Shaker, M., Mariotti, V. & Rameshwar, P. Mesenchymal stromal/stem cells in drug therapy: New perspective. *Cytotherapy*. **19** (1), 19-27, (2017), DOI: 10.1016/j.jcyt.2016.09.007.
- 2 Conde-Green, A. *et al.* Shift toward Mechanical Isolation of Adipose-derived Stromal Vascular Fraction: Review of Upcoming Techniques. *Plastic and Reconstructive Surgery - Global Open*. **4** (9), e1017, (2016), DOI: 10.1097/gox.0000000000001017.

- 343 3 Hendijani, F. Explant culture: An advantageous method for isolation of mesenchymal  
344 stem cells from human tissues. *Cell Proliferation*. **50** (2), (2017), DOI: 10.1111/cpr.12334.
- 345 4 Zuk, P. A. *et al.* Multilineage cells from human adipose tissue: implications for cell-based  
346 therapies. *Tissue Engineering*. **7** (2), 211-228, (2001), DOI: 10.1089/107632701300062859.
- 347 5 Chang, H. *et al.* Safety of adipose-derived stem cells and collagenase in fat tissue  
348 preparation. *Aesthetic Plastic Surgery*. **37** (4), 802-808, (2013), DOI: 10.1007/s00266-013-0156-  
349 7.
- 350 6 Spees, J. L. *et al.* Internalized antigens must be removed to prepare hypoimmunogenic  
351 mesenchymal stem cells for cell and gene therapy. *Molecular Therapy*. **9** (5), 747-756, (2004),  
352 DOI: 10.1016/j.ymthe.2004.02.012.
- 353 7 Tsuji, K. *et al.* Effects of Different Cell-Detaching Methods on the Viability and Cell  
354 Surface Antigen Expression of Synovial Mesenchymal Stem Cells. *Cell Transplantation*. **26** (6),  
355 1089-1102, (2017), DOI: 10.3727/096368917x694831.
- 356 8 Markarian, C. F. *et al.* Isolation of adipose-derived stem cells: a comparison among  
357 different methods. *Biotechnology Letters*. **36** (4), 693-702, (2014), DOI: 10.1007/s10529-013-  
358 1425-x.
- 359 9 Palumbo, P. *et al.* In vitro evaluation of different methods of handling human liposuction  
360 aspirate and their effect on adipocytes and adipose derived stem cells. *Journal of Cellular*  
361 *Physiology*. **230** (8), 1974-1981, (2015), DOI: 10.1002/jcp.24965.
- 362 10 Shah, F. S., Wu, X., Dietrich, M., Rood, J. & Gimble, J. M. A non-enzymatic method for  
363 isolating human adipose tissue-derived stromal stem cells. *Cytotherapy*. **15** (8), 979-985, (2013),  
364 DOI: 10.1016/j.jcyt.2013.04.001.
- 365 11 Sherman, L. S., Conde-Green, A., Kotamarti, V. S., Lee, E. S. & Rameshwar, P. Enzyme-  
366 Free Isolation of Adipose-Derived Mesenchymal Stem Cells. *Methods in Molecular Biology*. **1842**  
367 203-206, (2018), DOI: 10.1007/978-1-4939-8697-2\_14.
- 368 12 Rapisio, E., Caruana, G., Bonomini, S. & Libondi, G. A novel and effective strategy for  
369 the isolation of adipose-derived stem cells: minimally manipulated adipose-derived stem cells  
370 for more rapid and safe stem cell therapy. *Plast and Reconstructive Surgery*. **133** (6), 1406-1409,  
371 (2014), DOI: 10.1097/prs.0000000000000170.
- 372 13 Sherman, L. S., Conde-Green, A., Sandiford, O. A. & Rameshwar, P. A discussion on adult  
373 mesenchymal stem cells for drug delivery: pros and cons. *Therapeutic Delivery*. **6** (12), 1335-  
374 1346, (2015), DOI: 10.4155/tde.15.80.
- 375 14 Menon, V., Thomas, R., Ghale, A. R., Reinhard, C. & Pruszk, J. Flow cytometry protocols  
376 for surface and intracellular antigen analyses of neural cell types. *Journal of Visualized*  
377 *Experiments*. 10.3791/52241 (94), (2014), DOI: 10.3791/52241.
- 378 15 Barlow, S. *et al.* Comparison of human placenta- and bone marrow-derived multipotent  
379 mesenchymal stem cells. *Stem Cells and Development*. **17** (6), 1095-1107, (2008), DOI:  
380 10.1089/scd.2007.0154.
- 381 16 Munoz, J. L. *et al.* Feline bone marrow-derived mesenchymal stromal cells (MSCs) show  
382 similar phenotype and functions with regards to neuronal differentiation as human MSCs.  
383 *Differentiation*. **84** (2), 214-222, (2012), DOI: 10.1016/j.diff.2012.07.002.

- 17 Amati, E. *et al.* Generation of mesenchymal stromal cells from cord blood: evaluation of  
in vitro quality parameters prior to clinical use. *Stem Cell Research and Therapy*. **8** (1), 14,  
(2017), DOI: 10.1186/s13287-016-0465-2.
- 18 Bajek, A. *et al.* Does the liposuction method influence the phenotypic characteristic of  
human adipose-derived stem cells? *Bioscience Reports*. **35** (3), (2015), DOI:  
10.1042/bsr20150067.
- 19 Palumbo, P. *et al.* Methods of Isolation, Characterization and Expansion of Human  
Adipose-Derived Stem Cells (ASCs): An Overview. *International Journal of Molecular Sciences*.  
**19** (7), (2018), DOI: 10.3390/ijms19071897.
- 20 Bourin, P. *et al.* Stromal cells from the adipose tissue-derived stromal vascular fraction  
and culture expanded adipose tissue-derived stromal/stem cells: a joint statement of the  
International Federation for Adipose Therapeutics and Science (IFATS) and the International  
Society for Cellular Therapy (ISCT). *Cytotherapy*. **15** (6), 641-648, (2013), DOI:  
10.1016/j.jcyt.2013.02.006.
- 21 Ghorbani, A., Jalali, S. A. & Varedi, M. Isolation of adipose tissue mesenchymal stem  
cells without tissue destruction: a non-enzymatic method. *Tissue and Cell*. **46** (1), 54-58, (2014),  
DOI: 10.1016/j.tice.2013.11.002.
- 22 Bunpetch, V., Wu, H., Zhang, S. & Ouyang, H. From "Bench to Bedside": Current  
Advancement on Large-Scale Production of Mesenchymal Stem Cells. *Stem Cells and  
Development*. **26** (22), 1662-1673, (2017), DOI: 10.1089/scd.2017.0104.





Name of Material/ Equipment	Company
Dimethyl Sulfoxide	Fisher Bioreagents
Dulbecco's Modified Eagle's Medium - high glucose	Sigma-Aldrich
Falcon 3003 tissue culture plates	Corning
Fetal Bovine Serum	Sigma-Aldrich
L-Glutamine solution	Sigma-Aldrich
Mr. Frosty	Nalgene
Penicillin-Streptomycin	Sigma-Aldrich
Trypsin-EDTA solution	Sigma-Aldrich

Catalog Number	Comments/Description
BP231	
D5671	
Corning	
F2442	serum is batch tested to ensure it supports MSC
G7513	
5100-0001	
P4333	
T4049	



1 Alewife Center #200  
Cambridge, MA 02140  
tel. 617.945.9051  
www.jove.com

## ARTICLE AND VIDEO LICENSE AGREEMENT

Title of Article:

Author(s):

An Enzyme-Free Method for Isolation and Expansion of Human Adipose-Derived Mesenchymal Stem Cells  
Lauren S. Sherman, Alexandra Condé-Green, Edward S. Lee, Pranela Rameshwar

Item 1: The Author elects to have the Materials be made available (as described at <http://www.jove.com/publish>) via:

☐ Standard Access

☒ Open Access

Item 2: Please select one of the following items:

- ☒ The Author is **NOT** a United States government employee.
- ☐ The Author is a United States government employee and the Materials were prepared in the course of his or her duties as a United States government employee.
- ☐ The Author is a United States government employee but the Materials were NOT prepared in the course of his or her duties as a United States government employee.

### ARTICLE AND VIDEO LICENSE AGREEMENT

1. **Defined Terms.** As used in this Article and Video License Agreement, the following terms shall have the following meanings: “**Agreement**” means this Article and Video License Agreement; “**Article**” means the article specified on the last page of this Agreement, including any associated materials such as texts, figures, tables, artwork, abstracts, or summaries contained therein; “**Author**” means the author who is a signatory to this Agreement; “**Collective Work**” means a work, such as a periodical issue, anthology or encyclopedia, in which the Materials in their entirety in unmodified form, along with a number of other contributions, constituting separate and independent works in themselves, are assembled into a collective whole; “**CRC License**” means the Creative Commons Attribution-Non Commercial-No Derivs 3.0 Unported Agreement, the terms and conditions of which can be found at: <http://creativecommons.org/licenses/by-nc-nd/3.0/legalcode>; “**Derivative Work**” means a work based upon the Materials or upon the Materials and other pre-existing works, such as a translation, musical arrangement, dramatization, fictionalization, motion picture version, sound recording, art reproduction, abridgment, condensation, or any other form in which the Materials may be recast, transformed, or adapted; “**Institution**” means the institution, listed on the last page of this Agreement, by which the Author was employed at the time of the creation of the Materials; “**JoVE**” means MyJoVE Corporation, a Massachusetts corporation and the publisher of The Journal of Visualized Experiments; “**Materials**” means the Article and / or the Video; “**Parties**” means the Author and JoVE; “**Video**” means any video(s) made by the Author, alone or in conjunction with any other parties, or by JoVE or its affiliates or agents, individually or in collaboration with the Author or any other parties, incorporating all or any portion

of the Article, and in which the Author may or may not appear.

2. **Background.** The Author, who is the author of the Article, in order to ensure the dissemination and protection of the Article, desires to have the JoVE publish the Article and create and transmit videos based on the Article. In furtherance of such goals, the Parties desire to memorialize in this Agreement the respective rights of each Party in and to the Article and the Video.

3. **Grant of Rights in Article.** In consideration of JoVE agreeing to publish the Article, the Author hereby grants to JoVE, subject to **Sections 4 and 7** below, the exclusive, royalty-free, perpetual (for the full term of copyright in the Article, including any extensions thereto) license (a) to publish, reproduce, distribute, display and store the Article in all forms, formats and media whether now known or hereafter developed (including without limitation in print, digital and electronic form) throughout the world, (b) to translate the Article into other languages, create adaptations, summaries or extracts of the Article or other Derivative Works (including, without limitation, the Video) or Collective Works based on all or any portion of the Article and exercise all of the rights set forth in (a) above in such translations, adaptations, summaries, extracts, Derivative Works or Collective Works and (c) to license others to do any or all of the above. The foregoing rights may be exercised in all media and formats, whether now known or hereafter devised, and include the right to make such modifications as are technically necessary to exercise the rights in other media and formats. If the “Open Access” box has been checked in **Item 1** above, JoVE and the Author hereby grant to the public all such rights in the Article as provided in, but subject to all limitations and requirements set forth in, the CRC License.

612542.6 For questions, please contact us at [submissions@jove.com](mailto:submissions@jove.com) or +1.617.945.9051.



4. **Retention of Rights in Article.** Notwithstanding the exclusive license granted to JoVE in **Section 3** above, the Author shall, with respect to the Article, retain the non-exclusive right to use all or part of the Article for the non-commercial purpose of giving lectures, presentations or teaching classes, and to post a copy of the Article on the Institution's website or the Author's personal website, in each case provided that a link to the Article on the JoVE website is provided and notice of JoVE's copyright in the Article is included. All non-copyright intellectual property rights in and to the Article, such as patent rights, shall remain with the Author.

5. **Grant of Rights in Video – Standard Access.** This **Section 5** applies if the "Standard Access" box has been checked in **Item 1** above or if no box has been checked in **Item 1** above. In consideration of JoVE agreeing to produce, display or otherwise assist with the Video, the Author hereby acknowledges and agrees that, Subject to **Section 7** below, JoVE is and shall be the sole and exclusive owner of all rights of any nature, including, without limitation, all copyrights, in and to the Video. To the extent that, by law, the Author is deemed, now or at any time in the future, to have any rights of any nature in or to the Video, the Author hereby disclaims all such rights and transfers all such rights to JoVE.

6. **Grant of Rights in Video – Open Access.** This **Section 6** applies only if the "Open Access" box has been checked in **Item 1** above. In consideration of JoVE agreeing to produce, display or otherwise assist with the Video, the Author hereby grants to JoVE, subject to **Section 7** below, the exclusive, royalty-free, perpetual (for the full term of copyright in the Article, including any extensions thereto) license (a) to publish, reproduce, distribute, display and store the Video in all forms, formats and media whether now known or hereafter developed (including without limitation in print, digital and electronic form) throughout the world, (b) to translate the Video into other languages, create adaptations, summaries or extracts of the Video or other Derivative Works or Collective Works based on all or any portion of the Video and exercise all of the rights set forth in (a) above in such translations, adaptations, summaries, extracts, Derivative Works or Collective Works and (c) to license others to do any or all of the above. The foregoing rights may be exercised in all media and formats, whether now known or hereafter devised, and include the right to make such modifications as are technically necessary to exercise the rights in other media and formats. For any Video to which this **Section 6** is applicable, JoVE and the Author hereby grant to the public all such rights in the Video as provided in, but subject to all limitations and requirements set forth in, the CRC License.

7. **Government Employees.** If the Author is a United States government employee and the Article was prepared in the course of his or her duties as a United States government employee, as indicated in **Item 2** above, and any of the licenses or grants granted by the Author hereunder exceed the scope of the 17 U.S.C. 403, then the rights granted hereunder shall be limited to the maximum

rights permitted under such statute. In such case, all provisions contained herein that are not in conflict with such statute shall remain in full force and effect, and all provisions contained herein that do so conflict shall be deemed to be amended so as to provide to JoVE the maximum rights permissible within such statute.

8. **Protection of the Work.** The Author(s) authorize JoVE to take steps in the Author(s) name and on their behalf if JoVE believes some third party could be infringing or might infringe the copyright of either the Author's Article and/or Video.

9. **Likeness, Privacy, Personality.** The Author hereby grants JoVE the right to use the Author's name, voice, likeness, picture, photograph, image, biography and performance in any way, commercial or otherwise, in connection with the Materials and the sale, promotion and distribution thereof. The Author hereby waives any and all rights he or she may have, relating to his or her appearance in the Video or otherwise relating to the Materials, under all applicable privacy, likeness, personality or similar laws.

10. **Author Warranties.** The Author represents and warrants that the Article is original, that it has not been published, that the copyright interest is owned by the Author (or, if more than one author is listed at the beginning of this Agreement, by such authors collectively) and has not been assigned, licensed, or otherwise transferred to any other party. The Author represents and warrants that the author(s) listed at the top of this Agreement are the only authors of the Materials. If more than one author is listed at the top of this Agreement and if any such author has not entered into a separate Article and Video License Agreement with JoVE relating to the Materials, the Author represents and warrants that the Author has been authorized by each of the other such authors to execute this Agreement on his or her behalf and to bind him or her with respect to the terms of this Agreement as if each of them had been a party hereto as an Author. The Author warrants that the use, reproduction, distribution, public or private performance or display, and/or modification of all or any portion of the Materials does not and will not violate, infringe and/or misappropriate the patent, trademark, intellectual property or other rights of any third party. The Author represents and warrants that it has and will continue to comply with all government, institutional and other regulations, including, without limitation all institutional, laboratory, hospital, ethical, human and animal treatment, privacy, and all other rules, regulations, laws, procedures or guidelines, applicable to the Materials, and that all research involving human and animal subjects has been approved by the Author's relevant institutional review board.

11. **JoVE Discretion.** If the Author requests the assistance of JoVE in producing the Video in the Author's facility, the Author shall ensure that the presence of JoVE employees, agents or independent contractors is in accordance with the relevant regulations of the Author's institution. If more than one author is listed at the beginning of this Agreement, JoVE may, in its sole

## ARTICLE AND VIDEO LICENSE AGREEMENT

discretion, elect not take any action with respect to the Article until such time as it has received complete, executed Article and Video License Agreements from each such author. JoVE reserves the right, in its absolute and sole discretion and without giving any reason therefore, to accept or decline any work submitted to JoVE. JoVE and its employees, agents and independent contractors shall have full, unfettered access to the facilities of the Author or of the Author's institution as necessary to make the Video, whether actually published or not. JoVE has sole discretion as to the method of making and publishing the Materials, including, without limitation, to all decisions regarding editing, lighting, filming, timing of publication, if any, length, quality, content and the like.

12. **Indemnification.** The Author agrees to indemnify JoVE and/or its successors and assigns from and against any and all claims, costs, and expenses, including attorney's fees, arising out of any breach of any warranty or other representations contained herein. The Author further agrees to indemnify and hold harmless JoVE from and against any and all claims, costs, and expenses, including attorney's fees, resulting from the breach by the Author of any representation or warranty contained herein or from allegations or instances of violation of intellectual property rights, damage to the Author's or the Author's institution's facilities, fraud, libel, defamation, research, equipment, experiments, property damage, personal injury, violations of institutional, laboratory, hospital, ethical, human and animal treatment, privacy or other rules, regulations, laws, procedures or guidelines, liabilities and other losses or damages related in any way to the submission of work to JoVE, making of videos by JoVE, or publication in JoVE or elsewhere by JoVE. The Author shall be responsible for, and shall hold JoVE harmless from, damages caused by lack of sterilization, lack of cleanliness or by contamination due to


the making of a video by JoVE its employees, agents or independent contractors. All sterilization, cleanliness or decontamination procedures shall be solely the responsibility of the Author and shall be undertaken at the Author's expense. All indemnifications provided herein shall include JoVE's attorney's fees and costs related to said losses or damages. Such indemnification and holding harmless shall include such losses or damages incurred by, or in connection with, acts or omissions of JoVE, its employees, agents or independent contractors.

13. **Fees.** To cover the cost incurred for publication, JoVE must receive payment before production and publication the Materials. Payment is due in 21 days of invoice. Should the Materials not be published due to an editorial or production decision, these funds will be returned to the Author. Withdrawal by the Author of any submitted Materials after final peer review approval will result in a US\$1,200 fee to cover pre-production expenses incurred by JoVE. If payment is not received by the completion of filming, production and publication of the Materials will be suspended until payment is received.

14. **Transfer, Governing Law.** This Agreement may be assigned by JoVE and shall inure to the benefits of any of JoVE's successors and assignees. This Agreement shall be governed and construed by the internal laws of the Commonwealth of Massachusetts without giving effect to any conflict of law provision thereunder. This Agreement may be executed in counterparts, each of which shall be deemed an original, but all of which together shall be deemed to be one and the same agreement. A signed copy of this Agreement delivered by facsimile, e-mail or other means of electronic transmission shall be deemed to have the same legal effect as delivery of an original signed copy of this Agreement.

A signed copy of this document must be sent with all new submissions. Only one Agreement is required per submission.

### CORRESPONDING AUTHOR

Name:	Pranela Rameshwar	
Department:	Medicine	
Institution:	Rutgers University	
Title:	Professor	
Signature:		Date: Nov 20, 2018

Please submit a **signed** and **dated** copy of this license by one of the following three methods:

1. Upload an electronic version on the JoVE submission site
2. Fax the document to +1.866.381.2236
3. Mail the document to JoVE / Attn: JoVE Editorial / 1 Alewife Center #200 / Cambridge, MA 02140

612542.6 For questions, please contact us at [submissions@jove.com](mailto:submissions@jove.com) or +1.617.945.9051.



**Editorial comments:**

1. Please take this opportunity to thoroughly proofread the manuscript to ensure that there are no spelling or grammar issues. **The manuscript has been proofread**
2. Step 1.1.1: Please write this step in the imperative tense. **Tense corrected**
3. 2.1: Please ensure that all text is written in the imperative tense. **Tense corrected**
4. 2.2: Please write this step in the imperative tense. **Tense corrected**
5. 2.2.1: Please write this step in the imperative tense. **Tense corrected**
6. 2.3: Please write this step in the imperative tense. **Tense corrected**
7. 2.4: Please ensure that all text is written in the imperative tense. **Tense corrected**
8. 2.4.1: Please write this step in the imperative tense. **Tense corrected**
9. 2.5: Please ensure that all text is written in the imperative tense. **Tense corrected**
10. 2.6: Please ensure that all text is written in the imperative tense. **Tense corrected**
11. 3.1: Please write this step in the imperative tense. **Tense corrected**
12. 3.4.1.2: Please write this step in the imperative tense. **Tense corrected**
13. 3.5: Please write this step in the imperative tense. **Tense corrected**