

Journal of Visualized Experiments

Human Colonoid Monolayers to Study Interactions Between Pathogens, Commensals, and Host Intestinal Epithelium --Manuscript Draft--

Article Type:	Invited Methods Article - JoVE Produced Video
Manuscript Number:	JoVE59357R1
Full Title:	Human Colonoid Monolayers to Study Interactions Between Pathogens, Commensals, and Host Intestinal Epithelium
Keywords:	Human enteroid or colonoid monolayers; host-pathogen interaction; apical infection; apical and basolateral secretion; colonic mucus; intestinal organoid monolayer
Corresponding Author:	Olga Kovbasnjuk University of New Mexico Albuquerque, NM UNITED STATES
Corresponding Author's Institution:	University of New Mexico
Corresponding Author E-Mail:	OKovbasnjuk@salud.unm.edu
Order of Authors:	Julie G. In Jennifer Foulke-Abel Olga Kovbasnjuk
Additional Information:	
Question	Response
Please indicate whether this article will be Standard Access or Open Access.	Open Access (US\$4,200)
Please indicate the city, state/province, and country where this article will be filmed . Please do not use abbreviations.	Albuquerque NM

TITLE:

Human Colonoid Monolayers to Study Interactions Between Pathogens, Commensals, and Host Intestinal Epithelium

AUTHORS AND AFFILIATIONS:

Julie G. In^{1*}, Jennifer Foulke-Abel^{2*}, Olga Kovbasnjuk¹

¹Department of Internal Medicine, University of New Mexico Health Science Center, Albuquerque, NM, USA

²Department of Medicine, Division of Gastroenterology & Hepatology, Johns Hopkins University School of Medicine, Baltimore, MD, USA

* These authors contributed equally

Corresponding author:

Olga Kovbasnjuk (okovbasnjuk@salud.unm.edu)

Email Addresses of Co-Authors:

Julie G. In (jgin@salud.unm.edu)

Jennifer Foulke-Abel (jfoulke@jhmi.edu)

KEYWORDS:

Human enteroid or colonoid monolayers, host-pathogen interaction, apical infection, apical and basolateral secretion, colonic mucus, intestinal organoid monolayer

SUMMARY:

Here, we present a protocol to culture human enteroid or colonoid monolayers that have intact barrier function to study host epithelial-microbiota interactions at the cellular and biochemical level.

ABSTRACT:

Human 3-dimensional (3D) enteroid or colonoid cultures derived from crypt base stem cells are currently the most advanced *ex vivo* model of the intestinal epithelium. Due to their closed structures and significant supporting extracellular matrix, 3D cultures are not ideal for host-pathogen studies. Enteroids or colonoids can be grown as epithelial monolayers on permeable tissue culture membranes to allow manipulation of both luminal and basolateral cell surfaces and accompanying fluids. This enhanced luminal surface accessibility facilitates modeling bacterial-host epithelial interactions such as the mucus-degrading ability of enterohemorrhagic *E. coli* (EHEC) on colonic epithelium. A method for 3D culture fragmentation, monolayer seeding, and transepithelial electrical resistance (TER) measurements to monitor the progress towards confluency and differentiation are described. Colonoid monolayer differentiation yields secreted mucus that can be studied by the immunofluorescence or immunoblotting techniques. More generally, enteroid or colonoid monolayers enable a physiologically-relevant platform to evaluate specific cell populations that may be targeted by pathogenic or commensal microbiota.

INTRODUCTION:

Intestinal organoids, enteroids, and colonoids have led to many advances in understanding stem cell behavior, intestinal development, barrier/transport function, and cellular differentiation.¹ However, 3D culture limits the study of host epithelial-pathogen interaction because the lumen is not directly accessible to bacteria or virulence factors unless the closed structures are subjected to microinjection.^{2,3} Additionally, secreted materials such as small molecules, proteins, or mucus cannot be easily sampled from 3D culture for the downstream analysis. The impact of pathogenic agents on epithelial barrier function⁴ and ion transport⁵ has been evaluated in 3D culture using fluorescent dyes and time-lapse microscopy, but monolayers grown on permeable tissue culture supports are amenable to additional techniques such as TER measurement and Ussing chamber/voltage clamp recording.^{6,7}

Numerous publications have described protocols for 2D or monolayer culture of enteroids/colonoids. Materials found to promote epithelial cell attachment include collagen hydrogels,^{8,9} 0.1% gelatin,¹⁰ thin-layer murine sarcoma-derived basement membrane matrix (BMM),¹¹⁻¹³ and human collagen IV.^{6,7,14-17} Seeding approaches include mechanical fragmentation by pipetting^{6,14,15} and/or dissociation of cell adhesion factors using trypsin,^{10,11} dispase,¹³ or EDTA.⁹ A few protocols use non-porous tissue culture plasticware for seeding, but this restricts basolateral access, so most applications depend on permeable tissue culture inserts. Documentation of stable confluent monolayer formation and maintenance varies widely among the publications. Additionally, growth and differentiation media compositions for human cultures differ among various groups and continue to evolve as more researchers adopt and adjust the methodology to suit their application and available resources.

To address the limitations of 3D intestinal epithelial culture in host-pathogen interaction studies, we present a modified protocol for converting 3D human enteroids or colonoids to a monolayer. After achieving confluency in a crypt-like immature state, withdrawal of the growth factors WNT3A, RSPO1 and the inhibitors A-83-01 and SB 202190 leads to differentiation representative of small intestinal villus or surface colonic epithelium. We describe the ideal matrix, human collagen type IV, to coat the inserts and obtain uniform enteroid or colonoid fragments for plating. We demonstrate that this protocol produces a confluent monolayer with a high TER. Colonoid monolayers secrete a thick apical mucus layer, allowing for *ex vivo* studies of pathogen-mucus interaction via immunoblotting or immunostaining. A modified fixation procedure to preserve the colonic mucus layer for immunostaining is also described. This method aims to provide a tractable model to study the earliest intestinal host-pathogen interactions upon infection.

PROTOCOL:

This protocol is based on studies previously published by the authors.^{6,7,14-16} The following steps should be carried out in a sterile biosafety cabinet using proper aseptic techniques. All methods involving human specimens have been approved by the Institutional Review Board of Johns Hopkins University School of Medicine (IRB NA_00038329).

1. Coat cell culture inserts with extracellular matrix

1.1 Prepare 5 mL of stock collagen IV solution (1 mg/mL) in 100 mM acetic acid. Let stand at 4 °C for approximately 4 h to fully hydrate/dissolve.

1.2 Aliquot the collagen IV stock solution and store at 4 °C (\leq 1 month) or -20 °C ($>$ 1 month).

1.3 Immediately prior to coating, dilute the collagen IV stock solution in sterile tissue culture grade water to a final concentration of 34 μ g/mL. For 24-well plate cell culture inserts, coat each insert with 100 μ L of solution, which corresponds to 10 μ g/cm².

1.4 Incubate the plate in a standard CO₂ tissue culture incubator at 37 °C for \geq 2 h, or for convenience, seal the plate edges with paraffin film and incubate at 4 °C overnight or up to 1 week.

2. Isolate enteroids/colonoids from 3D culture

NOTE: Enteroids or colonoids are established from donor biopsies and maintained in 3D culture according to standard protocols previously described.^{14,18} Briefly, crypts are harvested from intestinal biopsies or resections via chelation and mechanical agitation. The crypts are washed, harvested, and plated in BMM. Expansion media (described in step 4.2) is added to the culture and replaced every 2 days. 3D culture formation is visible within hours after plating.

2.1 Aspirate the culture medium from the 24-well plate and replace with 1 mL ice-cold harvesting solution (see **Table of Materials**) per well.

2.2 Use a mini cell scraper to dislodge and break-up the basement membrane matrix pellet, paying particular attention to any material near the well edges.

2.3 Agitate the plate on an orbital shaker at approximately 200 rpm, 4 °C for 30-45 min.

3. Dissociate 3D enteroids/colonoids

3.1 Use a P200 single channel pipette or a multi-channel pipette fitted with sterile filter tips to triturate the cell suspension.

3.2 Pool the cell suspension(s) in a 15 mL conical vial. Use multiple vials if total suspension volume is $>$ 6 mL.

3.3 Add an equal volume of Advanced DMEM/F12 medium containing 10 mM HEPES, L-alanyl-L-glutamine dipeptide (1x), and penicillin-streptomycin (1x) (wash medium). Invert the tube 3-4 times to mix. Centrifuge at 300 x g, 10 min, 4 °C.

3.3.1 Optionally, aspirate the wash medium and replace with 0.5 mL/well trypsin (see **Table of**

Materials). Resuspend colonoids with a P200 pipette, cap the tube and place in a 37 °C water bath for approximately 2 min. Immediately remove the tube, add wash medium to a final volume of 10 mL, and repeat the centrifugation as in Step 3.3.

NOTE: This step may be preferable if trituration is not resulting in uniformly sized fragments.

4. Plating the enteroid/colonoid suspension

4.1 If coated inserts were stored at 4 °C, equilibrate in a 37 °C/5% CO₂ tissue culture incubator for at least 30 min prior to cell plating.

4.2 For each insert to be plated, prepare 1 mL warm (between 25-37 °C) expansion medium (EM) and add 10 µM Y-27632 and 10 µM CHIR 99021.

NOTE: EM is composed of Advanced DMEM/F12 containing B27 (1x), 50% WNT3A conditioned medium, 15% RSPO1 conditioned medium, 10% Noggin conditioned medium, 50 ng/mL human EGF, 500 nM A-83-01, 10 µM SB 202190, antibiotic/antimycotic cocktail (1x), 10 mM HEPES, L-alanyl-L-glutamine dipeptide (1x), and penicillin-streptomycin (1x) (see **Table of Materials**).

4.3 Aspirate the wash medium from the tube containing the cell pellet and resuspend in a volume of EM sufficient to yield at least 100 µL/insert.

4.4 Aspirate the collagen IV solution from each insert and wash twice with 150 µL of the wash medium per insert.

4.5 Pipet 600 µL of EM into the space beneath each insert.

4.6 Pipet 100 µL of cell suspension into each insert.

4.7 Return the plate to the tissue culture incubator and leave undisturbed for at least 12 h.

NOTE: Avoid shaking or sharply tilting the plate to prevent uneven distribution of colonoid fragments on the insert membrane.

4.8 Monitor the cell attachment and spreading to form a confluent monolayer by placing the plate on a phase-contrast light microscope under a 2.5x-10x objective lens.

4.9 After 1-2 days, most fragments should adhere to the collagen matrix. Refresh the culture medium and discontinue treatment with Y-27632 and CHIR 99021. Continue to refresh the medium every 2-3 days until confluent. Confluency is generally reached in 7-10 days.

5. Measure transepithelial electrical resistance

5.1 Attach the electrode leads and power on the epithelial voltohmmeter (EVOM). Verify that the

measurement function is set to ohms.

5.2 Dip the electrode tips briefly in 70% ethanol and wipe dry with a laboratory tissue. Equilibrate the electrode in 5 mL of wash medium for approximately 5 min.

5.3 Immerse the shorter electrode tip in the insert medium and orient the longer electrode tip into the lower well plate. Maintain the electrode in a full vertical orientation until the EVOM reading is relatively stable, or for no longer than 60 s.

NOTE: If the electrode assembly is tilted far from vertical, or the tip height is improperly adjusted, the shorter tip may come into contact with and disrupt the cell monolayer.

5.4 Compare EVOM measurements to the value obtained from a cell-free insert submerged in culture medium to evaluate progress toward confluency or differentiation.

6. Differentiation of confluent enteroid/colonoid monolayers

6.1 Exchange EM for differentiation medium (DM), and continue to refresh media every two days until day 5. DM is EM that lacks WNT3A, RSPO1, A-83-01, and SB 202190.

6.2 Continue to monitor TER to verify that differentiation is proceeding as expected. TER will continue to increase during days 1-5 of differentiation. Monolayers may continue to increase TER and retain viability beyond day 5-6 but exhibit maximal and most reproducible results when used at day 5-6.

7. Bacterial infection with commensal or pathogenic *E. coli*

7.1 One day prior to carrying out the infection, wash and feed monolayers with antibiotic-free EM or DM.

7.2 Use a sterile microbiology loop to gently scrape the surface of a frozen bacterial glycerol stock and inoculate 2 mL of LB broth. Transfer the tube to a standard shaking incubator at 37 °C for 12-16 h.

7.3 Dilute 50 µL of the starter culture into 5 mL fresh LB broth (1:100) and continue incubation with shaking for 90 min. This will yield a log phase culture with a density of 10^5 - 10^6 colony-forming units (cfu)/mL.

7.3.1 Optionally, confirm the bacterial concentration by optical density measurement at 600 nm (OD600) in a spectrophotometer.

7.4 Spin down the bacterial culture at 12,000 x g for 10 min, remove the supernatant, and resuspend bacteria in antibiotic-free EM or DM to a final concentration of 10^7 cfu/mL.

7.5 Add 10 μ L of bacterial suspension to the insert (final concentration 10^6 cfu/mL). Pipet slowly to mix and avoid disturbing the extracellular mucus layer.

7.6 Return the plate to a tissue culture incubator for the desired infection period.

8. Fixation to preserve and immunostain mucus

8.1 Lift the cell culture inserts from the 24-well plate, carefully invert on a laboratory tissue paper to remove the apical medium, and wipe away external liquid clinging to the insert.

8.2 In a new 24-well plate, immerse the insert in a 1:3 solution of glacial acetic acid in absolute ethanol (Clarke's solution) for 10 min at room temperature.

8.3 Invert the insert to remove the fixative and rehydrate the cells in 1x PBS for 10 min. Proceed with standard immunostaining protocols.

8.4 Use a razor blade to cut around the perimeter of the insert membrane. Transfer the membrane to a glass microscope slide using forceps and affix a coverglass with mounting medium.

9. Preparation of cell lysates for immunoblotting

NOTE: Perform the following steps on ice or in a cold room.

9.1 Aspirate medium and wash insert once with PBS.

9.2 Add 150 μ L lysis buffer containing protease inhibitors (see Table of Materials) to the insert and let stand 5-10 min. Lysis buffer contains 50 mM Tris pH 8, 150 mM NaCl, 1% IGEPAL CA-630, 0.5% sodium deoxycholate, 0.1% SDS, 1:100 protease inhibitor cocktail.

9.3 Use a mini cell scraper to remove the cells from the insert, then use a P200 pipette to briefly triturate the suspension and transfer to a microcentrifuge tube.

9.4 Sonicate the suspension with 5 x 1 s pulses at 20% amplitude using a microtip probe (see **Table of Materials**).

9.5 Add SDS-PAGE loading buffer if immediately performing electrophoresis, or aliquot and store lysates at -20 °C.

REPRESENTATIVE RESULTS:

Human enteroid and colonoid cultures are grown as 3D structures, then dissociated and fragmented for plating on human collagen IV-coated cell culture inserts. The progress of monolayer formation is easily monitored on a daily basis via bright field microscopy, immunofluorescence staining (**Figure 1**), and by a steady increase in transepithelial electrical

resistance (TER) (**Figure 2**), which reflects the permeability of tight junctions to ions and correlates with monolayer confluency. The TER of an empty 24-well insert is approximately 50-100 $\Omega\cdot\text{cm}^2$, and upon reaching confluency increases to approximately 400-500 $\Omega\cdot\text{cm}^2$. All epithelial cells in confluent monolayers are connected by junctional complexes detected by the F-actin ring at the cell perimeter (**Figure 1**). Monolayers in full growth factor media represent the proliferative crypt-like epithelium composed primarily of actively dividing cells that incorporate the nucleoside analog EdU (**Figure 2**). Withdrawal of the growth factors WNT3A and RSPO1 promotes differentiation, leading to villus-like cultures that lack proliferating cells. Differentiated monolayers contain enterocytes (enteroids) or colonocytes (colonoids) and develop specialized intestinal epithelial cells as has been shown in 3D cultures,¹⁸ including goblet and enteroendocrine cells.¹⁵ Differentiated monolayers also demonstrate a significant increase in TER ($> 1000 \Omega\cdot\text{cm}^2$) (**Figure 2**), indicating mature tight junctions.

In normal human physiology, the intestinal epithelial layer separates nutrients and the microbe-enriched luminal space from the sterile serosal environment. The epithelium tightly regulates the cross-talk between these two compartments. Enteroid and colonoid monolayers preserve this important compartmentalization property as shown by the proteomic analysis in **Table 1**. There are substantial differences between the protein composition in apical and basolateral conditioned media collected from differentiated enteroid monolayers. Access to both the apical and basolateral sides allows for collection of both supernatants in a time dependent manner for measurement of differential secretion of other molecules such as cytokines and chemokines.^{15,17}

Monolayers are convenient and highly reproducible models to detect the changes in protein expression using both immunoblotting and immunostaining. Thus, changes in mucin 2 (MUC2) expression by shRNA knockdown (KD) can be detected using both techniques (**Figure 3**). The shRNA transduction was performed on 3D colonoids and maintained in antibiotic selection media. After verifying the KD, colonoids can be continuously maintained as 3D cultures and/or plated as monolayers for experimental purposes. Moreover, MUC2 KD does not affect the efficiency of monolayer formation compared to the wild type parental colonoid line. Collection of monolayers for immunoblotting is simple and similar to the protocols described for human epithelial adenocarcinoma-derived cell lines. Typically, approximately 50 μg or more of total protein can be extracted from a single 0.33 cm^2 insert-grown monolayer. As shown in **Figure 3**, MUC2 is barely detectable in undifferentiated (UD) WT colonoid monolayers but is highly expressed in differentiated (DF) WT monolayers. MUC2 is below the level of detection in both UD and DF colonoid monolayers transduced with MUC2 shRNA.

Importantly, monolayers are a suitable model to study host-microbial interactions at the apical surface of the epithelia. Colonoid monolayers form a thick attached MUC2-positive mucus layer upon differentiation which is not easily permeated by commensal *E. coli* HS bacteria (**Figure 4**), similar to what has been suggested in the normal human colon.¹⁹ However, enterohemorrhagic *E. coli* (EHEC), a human colonic pathogen, has been shown to have the ability to destroy the MUC2-enriched attached mucus layer to reach the apical surface of the epithelium (**Figure 4**).^{14,20} Remaining MUC2 is only present inside the goblet cells.

FIGURE AND TABLE LEGENDS:

Figure 1: Establishment of human enteroid/colonoid monolayers. (A) Example of colonoid fragments after the dissolution of BMM and trituration. (B) Example of insert immediately after plating colonoid fragments. Scale bar (A-B) = 200 μm . Representative (C) maximum intensity projection and (D) confocal optical Z-section with the corresponding orthogonal projections show that colonoid fragments seeded onto human collagen IV-coated filters form multiple monolayer islands 2-4 days post-seeding. Cell-free areas (asterisk) are identifiable by the absence of both nuclear (Hoechst 33342, blue) and apical F-actin (phalloidin, green) staining in both C and D. Representative (E) maximum intensity projection and (F) confocal optical section with the corresponding orthogonal projections show a confluent colonoid monolayer with continuous apical surface detected by F-actin immunostaining approximately 1-week post-seeding. (G) High magnification of a representative maximum intensity projection and (H) confocal optical section with the corresponding orthogonal projections show that cells in confluent colonoid monolayers form the F-actin perijunctional rings (white arrowhead) and an immature apical brush border (yellow arrow heads). Scale bar (C-H) = 20 μm .

Figure 2: Evaluation of enteroid/colonoid monolayer differentiation. (A) EdU (red) incorporation demonstrates a progressive loss of proliferation during jejunal monolayer differentiation. (B) Average TER measurements in confluent jejunal monolayers in expansion or differentiation medium. Error bars represent SEM. UD, undifferentiated; DF, differentiated. Numbers correspond to days under the specified condition; UD1 was the first day of confluency, approximately 1 week after seeding. (C) UD jejunal monolayers have broad, shorter cells and a less-mature apical actin-based brush border than DF day 5 jejunal monolayers. Scale bar (A, C) = 50 μm . All monolayers were depicted at least 1-week post-seeding and were confluent prior to beginning differentiation.

Figure 3: Wild type colonoids and shRNA transduced knockdown (KD) colonoids each form confluent monolayers. (A) Representative images of wild type (WT) human confluent colonoid monolayer differentiated for 5 days and (B) similarly grown monolayers derived from MUC2 KD colonoid cultures. Scale bar (A-B) = 50 μm (C) Representative immunoblot of colonoid cultures transduced with scrambled shRNA or MUC2 shRNA demonstrates that the changes in protein expression due to KD can be quantitated by immunoblot.

Figure 4: Enteroid/colonoid monolayers are suitable models to study luminal microbe-host interactions. (A) Representative maximum intensity projection and orthogonal optical section of a colonoid monolayer shows the thick apical MUC2-positive mucus layer which is not permeable to *E. coli* HS (black arrowheads) sitting at the apical mucus surface. The monolayer was infected for 6 hours with 10^6 cfu/mL HS. (B) Representative maximum intensity projection of human colonoid monolayer apically infected with EHEC (10^6 cfu/mL, 6 hours). Scale bar (A-B) = 50 μm . (C) MUC2 immunofluorescence intensity measurements show a significant decrease in MUC2 in EHEC-infected colonoid monolayers compared to uninfected controls. Error bars represent SEM.

Table 1. A partial list of peptides identified by liquid chromatography/tandem mass spectrometry in apical and basolateral fluids sampled from differentiated jejunal monolayers.

DISCUSSION:

Critical parameters for successful formation of enteroid/colonoid monolayers include 1) healthy, proliferating 3D cultures as starting material; 2) coating the cell culture insert surface with human collagen IV prior to monolayer seeding; 3) fragmentation of 3D cultures either mechanically or enzymatically, but not to the single cell level.

During isolation of 3D enteroids/colonoids, the optimal shaking speed can vary depending on the rotational diameter of a given shaker model. The intent is to not only agitate the plate for an efficient mixing, but to also avoid splashing the cell suspension on the plate cover or into adjacent wells. Incubation periods of < 30 min may yield residual BMM clinging to cells, which can impede attachment and formation of uniform cell monolayers when plated on inserts. Extensive incubation (≥ 1 h) will yield significantly decreased cell viability.

The extent of trituration required to dissociate 3D enteroids/colonoids can vary with piston rigidity and user dexterity. Periodic examination of the well contents on a phase-contrast light microscope is recommended to determine fragment uniformity during trituration, with a goal of approximately 30 cells per fragment. In lieu of, or in addition to trituration, the suspension can be digested briefly with trypsin to obtain smaller uniform fragments. Trypsin digest may be desirable if monolayers contain a large proportion of 3D-like structures among an otherwise single epithelial layer. However, dissociation to single cells is not desirable as this significantly decreases cell viability. One well of enteroids/colonoids cultured in a 35 μ L BMM droplet will generally be enough to populate 2-3 inserts, but this factor can vary depending on the number and average size of the enteroids/colonoids.

Colonoid monolayers may absorb a substantial volume of the apical medium as they differentiate. This can be circumvented by applying additional DM to the upper insert chamber (150-200 μ L), although partial drying of the upper chamber does not appear to adversely affect monolayer viability or function in downstream assays. After approximately 4-5 days of differentiation, colonoid monolayers develop extracellular mucus that may be visible as thick/gelatinous material on the cell surface after careful aspiration of DM.

For EHEC interaction with the outer mucus layer, we routinely use the bacterial titer and incubation period specified in the protocol. However, unique bacterial strains should initially be assayed at multiple concentrations and incubation periods to determine the appropriate parameters for the desired effect.

During mucus fixation, aspirating the apical medium will likely remove most of the extracellular unattached mucus layer. Therefore, it is important to carefully pour out the medium. If the medium is retained in the insert by surface tension, use the corner of a folded laboratory tissue to break the surface tension and wick away most of the medium. After fixation and staining, the mucus layer can be unintentionally dislodged or flattened while mounting a coverglass over the insert filter. To preserve mucus height, place the filter on a drop of mounting media and carefully place the coverglass on the filter. Do not tap or press down on the coverglass as this may

significantly flatten the mucus layer.

To form a polarized monolayer from cells in 3D culture, it is necessary to reproduce the interaction between basolateral membrane integrins of intestinal epithelial cells and extracellular matrix (ECM) proteins. Laminin, collagen IV, fibronectin, and an array of proteoglycans constitute the intestinal epithelial ECM.^{21,22} We compared human cell-derived laminin, fibronectin, collagen IV, and murine-derived BMM as insert coatings. Only collagen IV supported the formation of stable, long-term (up to 4 weeks) confluent enteroid/colonoid monolayers (**Figures 1-2**). Small patches of monolayer-like growth were obtained on each of the other tested matrices, but these regions failed to progress to confluency. Use of human collagen IV as the ECM surrogate has a number of advantages. BMM derived from Engelbreth-Holm-Swarm (EHS) murine sarcoma cells are not of human origin, whereas human collagen IV is commercially available and generally more cost-effective. Additionally, the BMM is a complex mixture of proteins with inherent variability, and may contain growth factors secreted by the sarcoma that affect gene expression.²³

Interactions between intestinal epithelial cells and the underlying ECM in intestinal epithelial restitution is still incompletely understood. The significance of collagen IV, but not laminin, as an adhesion ligand for human colonocytes²⁴ and enhancer of intestinal crypt epithelial cell restitution²⁵ has been suggested using antibodies against collagen IV that prevented attachment. Epithelial-expressed β 1-integrin appears to be important for ECM interaction, as an antibody specific for β 1-integrin significantly blocked adhesion of colonocytes to type IV collagen.²⁴ While collagen IV provides a reliable ECM for enteroid/colonoid monolayer formation on inserts, epithelial remodeling of the ECM over time has not yet been evaluated in this model, nor has the influence of more complex and defined ECM mixtures of collagen IV, laminin, and fibronectin.

Human enteroids/colonoids in monolayer format (**Figures 1-4**) enable manipulations and sampling that would be cumbersome or impossible to achieve using 3D matrix-embedded cultures. 3D enteroids/colonoids vary in size, structural complexity, and luminal volume, and thus microinjection of microbes or small molecules are difficult to accurately quantitate. Additionally, in contrast to the monolayers (**Table 1**), 3D cultures prevent direct access to both the luminal and basolateral surfaces to measure ions, nutrients, cytokines or secreted factors associated with physiologic or pathophysiologic processes. Confluency (**Figures 1-2**) is one of the main properties of the enteroid/colonoid monolayer necessary for establishing not only the physiologic gradients of nutrients, ions, and other macromolecules,¹⁶ but also creating the proper barrier between luminal microbiota and sterile mesenchymal/immune cell-populated serosal environments. These facets are important to consider for future studies that incorporate enteroid/colonoid monolayers with mesenchymal, immune, or neuronal cell types to build more complex physiological models.

Noted limitations of the cell culture insert model described here include lack of physical forces such as fluid shear stress and mechanical stretch/compression (peristalsis), and absence of an anaerobic apical environment normally experienced by intestinal epithelia in vivo. These elements have the potential to be addressed with more sophisticated microphysiological

platforms,²⁶ but they also require additional expense, equipment, and expertise to implement. Both 3D and monolayer cultures are also without interactions with or contributions from the intestinal microbiome, stromal cell populations, and the immune system unless these components are purposefully added.

Future applications of the enteroid/colonoid monolayer on collagen IV-coated cell culture inserts may include other studies of pathogenic or commensal microbial interaction, drug or nutrient uptake, toxicity, metabolism, barrier function, and functional enhancement catalyzed by co-culture with additional intestinal cell types. Evaluations can be made not only within epithelia of healthy donors but also from individuals with genetic mutations or intestinal disorders, provided the in vivo phenotypes are established to be preserved in ex vivo enteroid/colonoid culture.

ACKNOWLEDGMENTS:

This work was supported by NIH grants P01 AI125181, K01 DK106323 (JGI), and K01 DK113043 (JFA). We thank James Kaper (University of Maryland, Baltimore, MD, USA) for providing *E. coli* strain HS and EHEC. We also acknowledge the Integrated Physiology and Imaging Cores of the Hopkins Conte Digestive Disease Basic and Translational Research Core Center (P30 DK089502) and the Johns Hopkins Mass Spectrometry and Proteomics Core.

DISCLOSURES:

The authors have nothing to disclose.

REFERENCES:

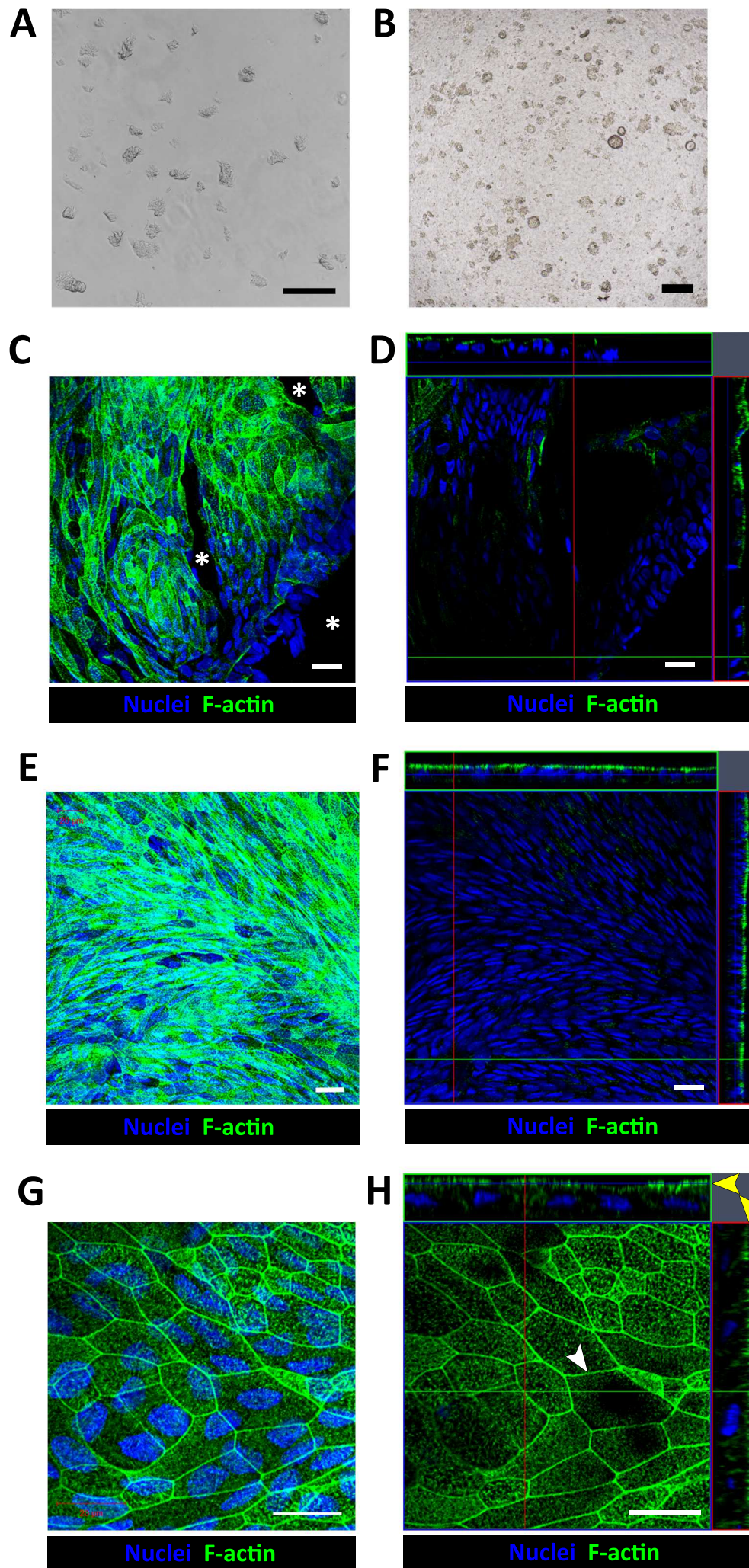
- 1 In, J. G. *et al.* Human mini-guts: new insights into intestinal physiology and host-pathogen interactions. *Nature Reviews Gastroenterology & Hepatology*. **13**, 633-642, doi:10.1038/nrgastro.2016.142 (2016).
- 2 Hill, D. R. *et al.* Bacterial colonization stimulates a complex physiological response in the immature human intestinal epithelium. *eLife*. **6**, e29132, doi:10.7554/eLife.29132 (2017).
- 3 Williamson, I. A. *et al.* A High-Throughput Organoid Microinjection Platform to Study Gastrointestinal Microbiota and Luminal Physiology. *Cellular and Molecular Gastroenterology and Hepatology*. **6**, 301-319, doi:10.1016/j.jcmgh.2018.05.004 (2018).
- 4 Leslie, J. L. *et al.* Persistence and Toxin Production by *Clostridium difficile* within Human Intestinal Organoids Result in Disruption of Epithelial Paracellular Barrier Function. *Infection and Immunity*. **83**, 138, doi:10.1128/iai.02561-14 (2015).
- 5 Foulke-Abel, J. *et al.* Human Enteroids as a Model of Upper Small Intestinal Ion Transport Physiology and Pathophysiology. *Gastroenterology*. **150**, 638-649.e638, doi:10.1053/j.gastro.2015.11.047 (2016).
- 6 Yin, J. *et al.* Molecular Basis and Differentiation-Associated Alterations of Anion Secretion in Human Duodenal Enteroid Monolayers. *Cellular and Molecular Gastroenterology and Hepatology*. **5**, 591-609, doi:10.1016/j.jcmgh.2018.02.002 (2018).
- 7 Tse, C. *et al.* Enterohemorrhagic *E. coli* (EHEC)—Secreted Serine Protease EspP Stimulates Electrogenic Ion Transport in Human Colonoid Monolayers. *Toxins*. **10**, 351, doi:10.3390/toxins10090351 (2018).
- 8 Jabaji, Z. *et al.* Use of collagen gel as an alternative extracellular matrix for the in vitro and in

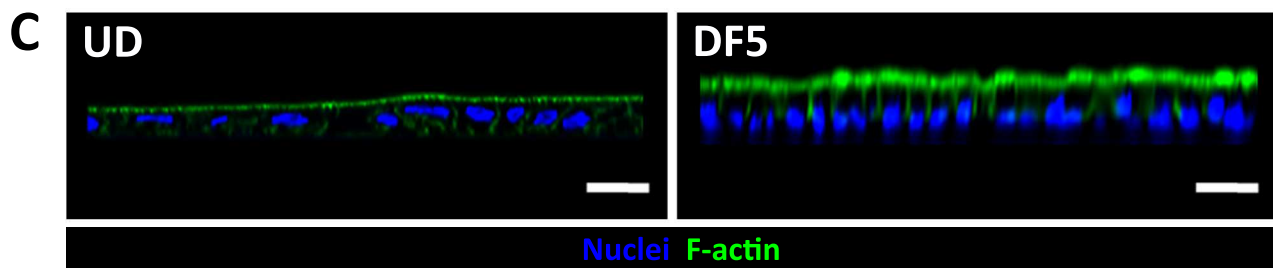
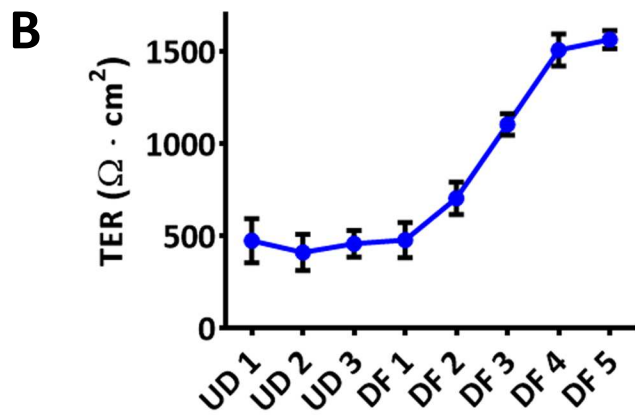
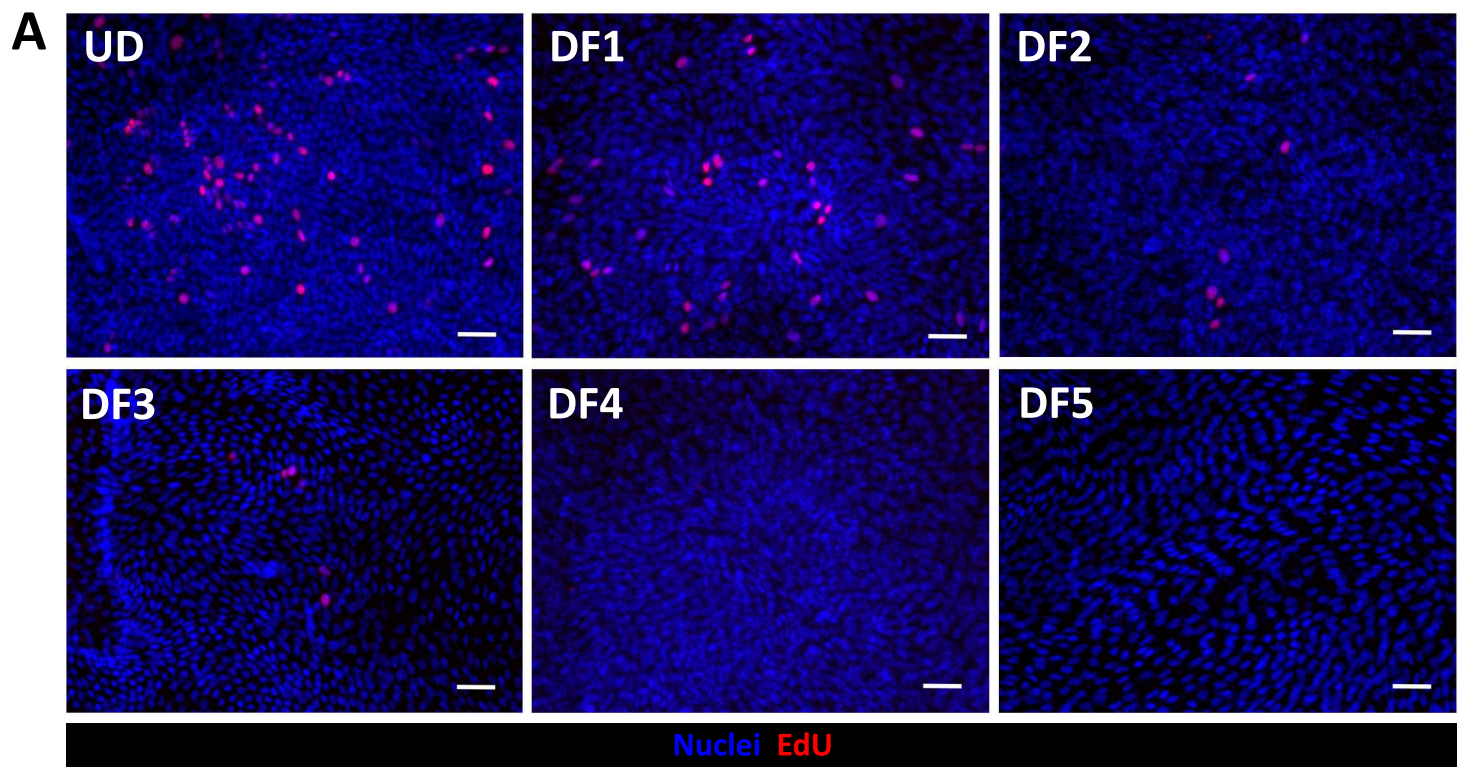
- vivo growth of murine small intestinal epithelium. *Tissue engineering. Part C, Methods*. **19**, 961-969, doi:10.1089/ten.TEC.2012.0710 (2013).
- 9 Wang, Y. *et al.* Self-renewing Monolayer of Primary Colonic or Rectal Epithelial Cells. *Cellular and Molecular Gastroenterology and Hepatology*. **4**, 165-182.e167, doi:https://doi.org/10.1016/j.jcmgh.2017.02.011 (2017).
- 10 Moon, C., VanDussen, K. L., Miyoshi, H. & Stappenbeck, T. S. Development of a primary mouse intestinal epithelial cell monolayer culture system to evaluate factors that modulate IgA transcytosis. *Mucosal Immunology*. **7**, 818-828, doi:10.1038/mi.2013.98 (2014).
- 11 VanDussen, K. L. *et al.* Development of an enhanced human gastrointestinal epithelial culture system to facilitate patient-based assays. *Gut*. **64**, 911, doi:10.1136/gutjnl-2013-306651 (2015).
- 12 Ettayebi, K. *et al.* Replication of human noroviruses in stem cell–derived human enteroids. *Science*. **353**, 1387, doi:10.1126/science.aaf5211 (2016).
- 13 Kozuka, K. *et al.* Development and Characterization of a Human and Mouse Intestinal Epithelial Cell Monolayer Platform. *Stem Cell Reports*. **9**, 1976-1990, doi:10.1016/j.stemcr.2017.10.013 (2017).
- 14 In, J. *et al.* Enterohemorrhagic *Escherichia coli* Reduces Mucus and Intermicrovillar Bridges in Human Stem Cell-Derived Colonoids. *Cellular and Molecular Gastroenterology and Hepatology*. **2**, 48-62.e43, doi:10.1016/j.jcmgh.2015.10.001 (2016).
- 15 Noel, G. *et al.* A primary human macrophage-enteroid co-culture model to investigate mucosal gut physiology and host-pathogen interactions. *Scientific Reports*. **7**, 45270, doi:10.1038/srep45270 (2017).
- 16 Vernetti, L. *et al.* Functional Coupling of Human Microphysiology Systems: Intestine, Liver, Kidney Proximal Tubule, Blood-Brain Barrier and Skeletal Muscle. *Scientific Reports*. **7**, 42296, doi:10.1038/srep42296 (2017).
- 17 Noel, G. *et al.* Enterotoxigenic *Escherichia coli* is phagocytosed by macrophages underlying villus-like intestinal epithelial cells: modeling ex vivo innate immune defenses of the human gut. *Gut Microbes*. **9**, 382-389, doi:10.1080/19490976.2017.1398871 (2018).
- 18 Sato, T. *et al.* Long-term Expansion of Epithelial Organoids From Human Colon, Adenoma, Adenocarcinoma, and Barrett's Epithelium. *Gastroenterology*. **141**, 1762-1772, doi:10.1053/j.gastro.2011.07.050 (2011).
- 19 Johansson, M. E. V., Sjövall, H. & Hansson, G. C. The gastrointestinal mucus system in health and disease. *Nature Reviews Gastroenterology & Hepatology*. **10**, 352-361, doi:10.1038/nrgastro.2013.35 (2013).
- 20 Hews, C. L. *et al.* The StcE metalloprotease of enterohaemorrhagic *Escherichia coli* reduces the inner mucus layer and promotes adherence to human colonic epithelium ex vivo. *Cellular Microbiology*. **19**, e12717, doi:10.1111/cmi.12717 (2017).
- 21 Laurie, G. W., Leblond, C. P. & Martin, G. R. Localization of type IV collagen, laminin, heparan sulfate proteoglycan, and fibronectin to the basal lamina of basement membranes. *The Journal of Cell Biology*. **95**, 340, doi:10.1083/jcb.95.1.340 (1982).
- 22 Timpl, R. Macromolecular organization of basement membranes. *Current Opinion in Cell Biology*. **8**, 618-624, doi:10.1016/S0955-0674(96)80102-5 (1996).
- 23 Hughes, C. S., Postovit, L. M. & Lajoie, G. A. Matrigel: A complex protein mixture required for optimal growth of cell culture. *Proteomics*. **10**, 1886-1890, doi:10.1002/pmic.200900758

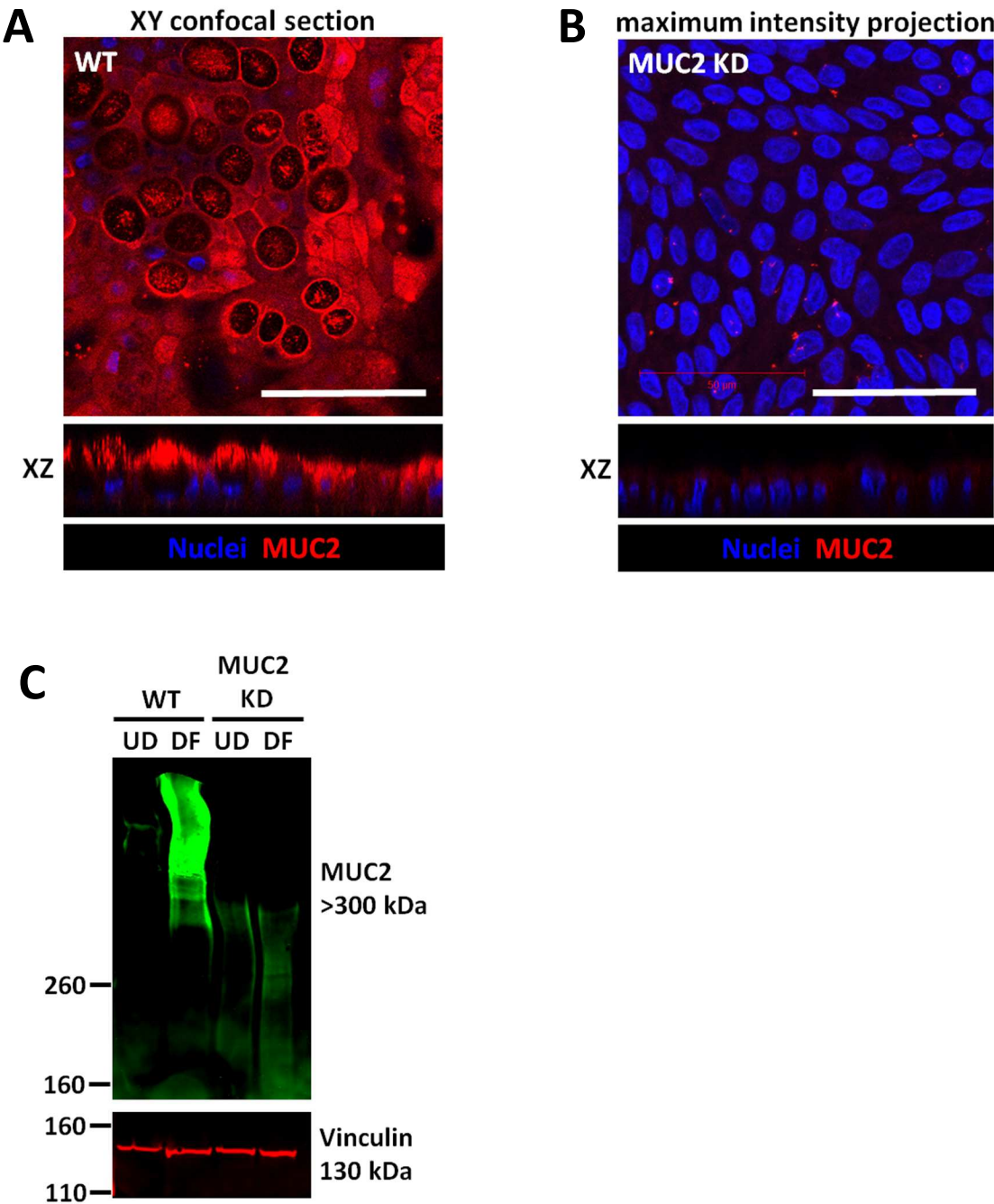
529 (2010).
530 24 Ishii, S. *et al.* Normal colonic epithelium adheres to carcinoembryonic antigen and type IV
531 collagen. *Gastroenterology*. **106**, 1242-1250, doi:10.1016/0016-5085(94)90015-9 (1994).
532 25 Moore, R., Madri, J., Carlson, S. & Madara, J. L. Collagens facilitate epithelial migration in
533 restitution of native guinea pig intestinal epithelium. *Gastroenterology*. **102**, 119-130,
534 doi:10.1016/0016-5085(92)91791-2 (1992).
535 26 Bein, A. *et al.* Microfluidic Organ-on-a-Chip Models of Human Intestine. *Cellular and*
536 *Molecular Gastroenterology and Hepatology*. **5**, 659-668, doi:10.1016/j.jcmgh.2017.12.010
537 (2018).
538
539

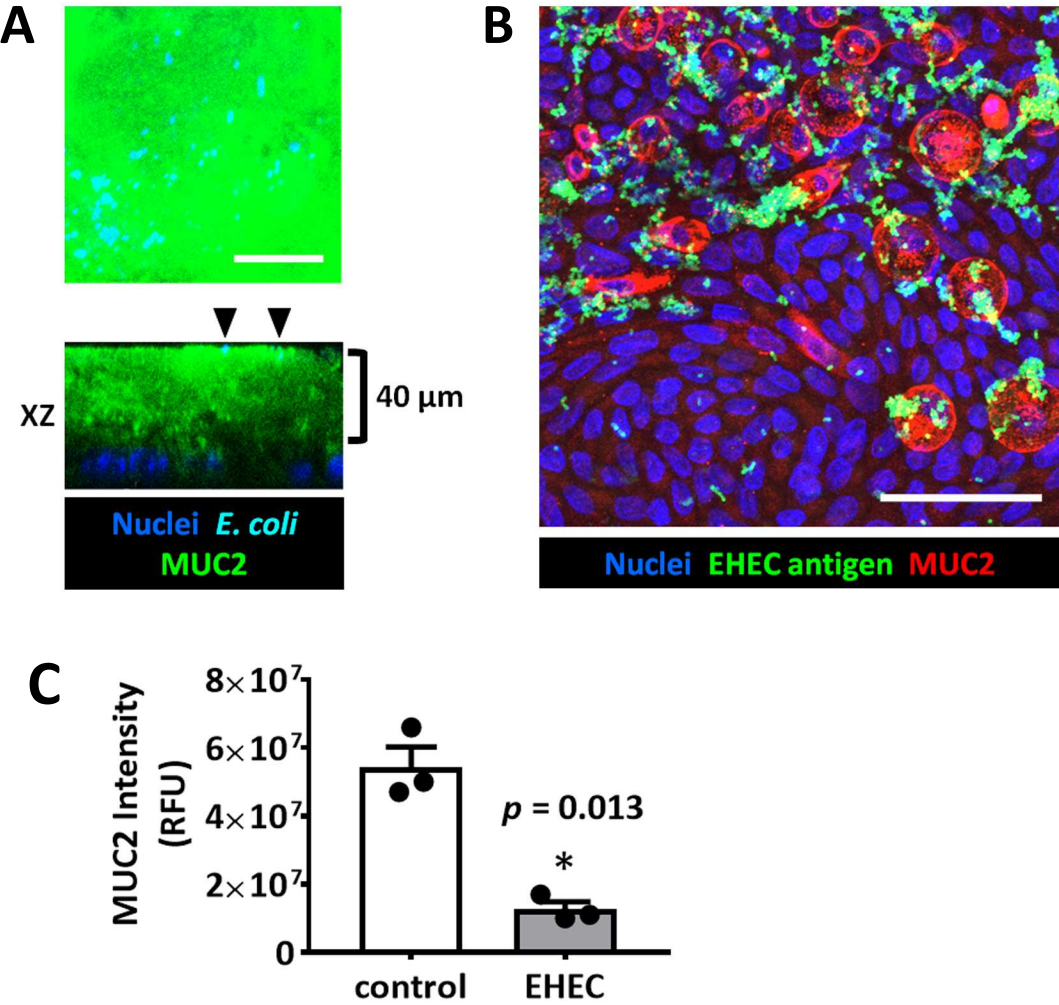
Figure 1

[Click here to access/download;Figure;Figure1.eps](#) 









Protein	Accession Number
Basolateral Media	
fatty acid-binding protein, liver [Homo sapiens]	NP_001434.1
profilin-1 [Homo sapiens]	NP_005013.1
apolipoprotein A-IV precursor [Homo sapiens]	NP_000473.2
ecto-ADP-ribosyltransferase 4 precursor [Homo sapiens]	NP_066549.2
glyceraldehyde-3-phosphate dehydrogenase isoform 1 [Homo sapiens]	NP_002037.2 (+1)
serotransferrin precursor [Homo sapiens]	NP_001054.1 (+1)
vitamin D-binding protein isoform 3 precursor [Homo sapiens]	NP_001191236.1 (+2)
catalase [Homo sapiens]	NP_001743.1
agrin isoform 1 precursor [Homo sapiens]	NP_940978.2 (+1)
lactotransferrin isoform 1 precursor [Homo sapiens]	NP_002334.2 (+1)
Apical Media	
trefoil factor 3 precursor [Homo sapiens]	NP_003217.3
trefoil factor 1 precursor [Homo sapiens]	NP_003216.1
basement membrane-specific heparan sulfate proteoglycan core protein isoform a precursor [Homo sapiens]	NP_001278789.1 (+3)
filamin-B isoform 1 [Homo sapiens]	NP_001157789.1 (+2)
trefoil factor 2 precursor [Homo sapiens]	NP_005414.1
deleted in malignant brain tumors 1 protein isoform b precursor [Homo sapiens]	NP_015568.2 (+3)
keratin, type II cytoskeletal 1 [Homo sapiens]	NP_006112.3
myosin-9 [Homo sapiens]	NP_002464.1
aminopeptidase N precursor [Homo sapiens]	NP_001141.2 (+1)
agrin precursor [Homo sapiens]	NP_940978.2 (+1)

Peptide Abundance

1299

797

744

633

616

572

567

427

377

262

326

304

303

240

182

169

157

150

145

112

Name of Reagent/Equipment	Company	Catalog Number
2-Amino-2-(hydroxymethyl)-1,3-propanediol	Sigma	T4661
A-83-01	Tocris	2939
Acetic acid, glacial	Fisher Scientific	A38
Advanced DMEM/F12	Life Technologies	12634-010
Alexa Fluor 488 phalloidin	Life Technologies	A12379
Antibiotic/antimycotic cocktail	Invivogen	ant-pm-2
B27, 50x	Life Technologies	17504-044
Cell culture inserts	Corning	3470
CHIR 99021	Tocris	4423
Click-iT Plus EdU Alexa Fluor 594 Imaging Kit	Life Technologies	C10639
Collagen IV, from human placenta	Sigma	C5533
Cultrex Organoid Harvesting Solution	Trevigen	3700-100-01
Enterohemorrhagic <i>Escherichia coli</i> (EHEC)	Kaper lab, University of Maryland	
Epithelial voltohmmeter	World Precision Instruments	EVOM2
Epithelial voltohmmeter electrode	World Precision Instruments	STX3
<i>Escherichia coli</i> strain HS	Kaper lab, University of Maryland	
Ethanol, absolute	Pharmco	111000200
FluorSave mounting medium	Millipore	345789
GlutaMAX	Life Technologies	35050-061
HEK293T/Noggin-Fc cell line	van den Brink lab, Tytgat Institute for Liver and Intestinal Research	
HEK293T/RSPO1-Fc-HA cell line	Trevigen	3710-001-K
HEPES, 1 M	Life Technologies	15630-080
Heraeus Multifuge X1R Centrifuge	Thermo Fisher Scientific	75004250
Hoechst 33342	Life Technologies	H3570
Human epidermal growth factor (EGF)	R&D Systems	236-EG-01M
IGEPAL CA-630	Sigma	I8896
Inverted cell culture light microscope	Olympus	CKX51
LB broth	EMD Millipore	1.10285.0500

L-WNT3A cell line	ATCC	CRL-2647
Matrigel, growth factor reduced	Corning	356231
Mini cell scraper	United BioSystems	MCS-200
MUC2 antibody, mouse monoclonal	Abcam	ab11197
MUC2 shRNA lentiviral particles	GE Dharmacon	RHS4531
Orbital shaker	Grant Instruments	PSU-10i
Penicillin-streptomycin, 100x	Life Technologies	15140-122
Phosphate buffered saline	Corning	21-031
Probe sonicator with microtip	Branson Ultrasonics	450
Protease inhibitor cocktail for mammalian cells	Sigma	P8340
SB 202190	Tocris	1264
Sodium chloride	Sigma	S3014
Sodium dexoycholate	Sigma	D6750
Sodium dodecyl sulfate	Sigma	L3771
TrypLE Express, 1x	Life Technologies	12605-010
Vinculin antibody, rabbit monoclonal	Abcam	ab129002
Water, tissue culture grade, sterile filtered	Corning	25-055
Y-27632	Tocris	1254

Comments/Description

Tris base, Component of lysis buffer

ALK4/5/7 inhibitor

Component of growth medium

Fluorescent probe for F-actin

Primocin (100x)

Component of growth medium

Transwell, PET membrane, 0.4 μm pore, 24-well plate

GSK3 β inhibitor

Depolymerizes basement membrane matrix

For mounting insert membrane on microscope slide

L-alanyl-L-glutamine dipeptide, 200 mM

For production of Noggin conditioned medium

For production of Rspodin-1 conditioned medium

Component of growth medium

Fluorescent nuclear dye

Component of growth medium

Component of lysis buffer

For production of Wnt3a conditioned medium
Basement membrane matrix for 3D culture

Use at 1:100 for immunostaining, 1:500 for immunoblotting
GIPZ lentiviral shRNA, ID: 4583

Component of growth medium

Component of lysis buffer

p38 MAPK inhibitor

Component of lysis buffer

Component of lysis buffer

Component of lysis buffer

Trypsin, for digesting enteroid/colonoid fragments

Use at 1:1000 for immunoblotting

RhoA/ROCK inhibitor



1 Alewife Center #200
Cambridge, MA 02140
tel. 617.945.9051
www.jove.com

ARTICLE AND VIDEO LICENSE AGREEMENT

4. Retention of Rights in Article. Notwithstanding the exclusive license granted to JoVE in **Section 3** above, the Author shall, with respect to the Article, retain the non-exclusive right to use all or part of the Article for the non-commercial purpose of giving lectures, presentations or teaching classes, and to post a copy of the Article on the Institution's website or the Author's personal website, in each case provided that a link to the Article on the JoVE website is provided and notice of JoVE's copyright in the Article is included. All non-copyright intellectual property rights in and to the Article, such as patent rights, shall remain with the Author.

5. Grant of Rights in Video – Standard Access. This **Section 5** applies if the "Standard Access" box has been checked in **Item 1** above or if no box has been checked in **Item 1** above. In consideration of JoVE agreeing to produce, display or otherwise assist with the Video, the Author hereby acknowledges and agrees that, Subject to **Section 7** below, JoVE is and shall be the sole and exclusive owner of all rights of any nature, including, without limitation, all copyrights, in and to the Video. To the extent that, by law, the Author is deemed, now or at any time in the future, to have any rights of any nature in or to the Video, the Author hereby disclaims all such rights and transfers all such rights to JoVE.

6. Grant of Rights in Video – Open Access. This **Section 6** applies only if the "Open Access" box has been checked in **Item 1** above. In consideration of JoVE agreeing to produce, display or otherwise assist with the Video, the Author hereby grants to JoVE, subject to **Section 7** below, the exclusive, royalty-free, perpetual (for the full term of copyright in the Article, including any extensions thereto) license (a) to publish, reproduce, distribute, display and store the Video in all forms, formats and media whether now known or hereafter developed (including without limitation in print, digital and electronic form) throughout the world, (b) to translate the Video into other languages, create adaptations, summaries or extracts of the Video or other Derivative Works or Collective Works based on all or any portion of the Video and exercise all of the rights set forth in (a) above in such translations, adaptations, summaries, extracts, Derivative Works or Collective Works and (c) to license others to do any or all of the above. The foregoing rights may be exercised in all media and formats, whether now known or hereafter devised, and include the right to make such modifications as are technically necessary to exercise the rights in other media and formats. For any Video to which this Section 6 is applicable, JoVE and the Author hereby grant to the public all such rights in the Video as provided in, but subject to all limitations and requirements set forth in, the CRC License.

7. Government Employees. If the Author is a United States government employee and the Article was prepared in the course of his or her duties as a United States government employee, as indicated in **Item 2** above, and any of the licenses or grants granted by the Author hereunder exceed the scope of the 17 U.S.C. 403, then the rights granted hereunder shall be limited to the maximum rights permitted under such

statute. In such case, all provisions contained herein that are not in conflict with such statute shall remain in full force and effect, and all provisions contained herein that do so conflict shall be deemed to be amended so as to provide to JoVE the maximum rights permissible within such statute.

8. Likeness, Privacy, Personality. The Author hereby grants JoVE the right to use the Author's name, voice, likeness, picture, photograph, image, biography and performance in any way, commercial or otherwise, in connection with the Materials and the sale, promotion and distribution thereof. The Author hereby waives any and all rights he or she may have, relating to his or her appearance in the Video or otherwise relating to the Materials, under all applicable privacy, likeness, personality or similar laws.

9. Author Warranties. The Author represents and warrants that the Article is original, that it has not been published, that the copyright interest is owned by the Author (or, if more than one author is listed at the beginning of this Agreement, by such authors collectively) and has not been assigned, licensed, or otherwise transferred to any other party. The Author represents and warrants that the author(s) listed at the top of this Agreement are the only authors of the Materials. If more than one author is listed at the top of this Agreement and if any such author has not entered into a separate Article and Video License Agreement with JoVE relating to the Materials, the Author represents and warrants that the Author has been authorized by each of the other such authors to execute this Agreement on his or her behalf and to bind him or her with respect to the terms of this Agreement as if each of them had been a party hereto as an Author. The Author warrants that the use, reproduction, distribution, public or private performance or display, and/or modification of all or any portion of the Materials does not and will not violate, infringe and/or misappropriate the patent, trademark, intellectual property or other rights of any third party. The Author represents and warrants that it has and will continue to comply with all government, institutional and other regulations, including, without limitation all institutional, laboratory, hospital, ethical, human and animal treatment, privacy, and all other rules, regulations, laws, procedures or guidelines, applicable to the Materials, and that all research involving human and animal subjects has been approved by the Author's relevant institutional review board.

10. JoVE Discretion. If the Author requests the assistance of JoVE in producing the Video in the Author's facility, the Author shall ensure that the presence of JoVE employees, agents or independent contractors is in accordance with the relevant regulations of the Author's institution. If more than one author is listed at the beginning of this Agreement, JoVE may, in its sole discretion, elect not take any action with respect to the Article until such time as it has received complete, executed Article and Video License Agreements from each such author. JoVE reserves the right, in its absolute and sole discretion and without giving any reason therefore, to accept or decline any work submitted to JoVE. JoVE and its employees, agents and independent contractors shall have

ARTICLE AND VIDEO LICENSE AGREEMENT

full, unfettered access to the facilities of the Author or of the Author's institution as necessary to make the Video, whether actually published or not. JoVE has sole discretion as to the method of making and publishing the Materials, including, without limitation, to all decisions regarding editing, lighting, filming, timing of publication, if any, length, quality, content and the like.

11. **Indemnification.** The Author agrees to indemnify JoVE and/or its successors and assigns from and against any and all claims, costs, and expenses, including attorney's fees, arising out of any breach of any warranty or other representations contained herein. The Author further agrees to indemnify and hold harmless JoVE from and against any and all claims, costs, and expenses, including attorney's fees, resulting from the breach by the Author of any representation or warranty contained herein or from allegations or instances of violation of intellectual property rights, damage to the Author's or the Author's institution's facilities, fraud, libel, defamation, research, equipment, experiments, property damage, personal injury, violations of institutional, laboratory, hospital, ethical, human and animal treatment, privacy or other rules, regulations, laws, procedures or guidelines, liabilities and other losses or damages related in any way to the submission of work to JoVE, making of videos by JoVE, or publication in JoVE or elsewhere by JoVE. The Author shall be responsible for, and shall hold JoVE harmless from, damages caused by lack of sterilization, lack of cleanliness or by contamination due to the making of a video by JoVE its employees, agents or independent contractors. All sterilization, cleanliness or decontamination procedures shall be solely the responsibility of the Author and shall be undertaken at the Author's

expense. All indemnifications provided herein shall include JoVE's attorney's fees and costs related to said losses or damages. Such indemnification and holding harmless shall include such losses or damages incurred by, or in connection with, acts or omissions of JoVE, its employees, agents or independent contractors.

12. **Fees.** To cover the cost incurred for publication, JoVE must receive payment before production and publication the Materials. Payment is due in 21 days of invoice. Should the Materials not be published due to an editorial or production decision, these funds will be returned to the Author. Withdrawal by the Author of any submitted Materials after final peer review approval will result in a US\$1,200 fee to cover pre-production expenses incurred by JoVE. If payment is not received by the completion of filming, production and publication of the Materials will be suspended until payment is received.

13. **Transfer, Governing Law.** This Agreement may be assigned by JoVE and shall inure to the benefits of any of JoVE's successors and assignees. This Agreement shall be governed and construed by the internal laws of the Commonwealth of Massachusetts without giving effect to any conflict of law provision thereunder. This Agreement may be executed in counterparts, each of which shall be deemed an original, but all of which together shall be deemed to be one and the same agreement. A signed copy of this Agreement delivered by facsimile, e-mail or other means of electronic transmission shall be deemed to have the same legal effect as delivery of an original signed copy of this Agreement.

A signed copy of this document must be sent with all new submissions. Only one Agreement required per submission.

CORRESPONDING AUTHOR:

Name:

Oleg Kovbasnjuk

Department:

Internal Medicine

Institution:

U. New Mexico

Article Title:

Human Colonoid Monolayers to study interactions

Signature:



Date:

11-02-18

Please submit a signed and dated copy of this license by one of the following three methods:

- 1) Upload a scanned copy of the document as a pdf on the JoVE submission site;
- 2) Fax the document to +1.866.381.2236;
- 3) Mail the document to JoVE / Attn: JoVE Editorial / 1 Alewife Center #200 / Cambridge, MA 02139

For questions, please email submissions@jove.com or call +1.617.945.9051

ARTICLE AND VIDEO LICENSE AGREEMENT

Title of Article:

Human Colonoid Monolayers to study interactions ...

Author(s):

Julie G. In, Jennifer Poulke-Abel, Olga Kovbasnyuk

Item 1 (check one box): The Author elects to have the Materials be made available (as described at

<http://www.jove.com/author>) via: ☐ Standard Access ☒ Open Access

Item 2 (check one box):



The Author is NOT a United States government employee.



The Author is a United States government employee and the Materials were prepared in the course of his or her duties as a United States government employee.



The Author is a United States government employee but the Materials were NOT prepared in the course of his or her duties as a United States government employee.

ARTICLE AND VIDEO LICENSE AGREEMENT

1. **Defined Terms.** As used in this Article and Video License Agreement, the following terms shall have the following meanings: "**Agreement**" means this Article and Video License Agreement; "**Article**" means the article specified on the last page of this Agreement, including any associated materials such as texts, figures, tables, artwork, abstracts, or summaries contained therein; "**Author**" means the author who is a signatory to this Agreement; "**Collective Work**" means a work, such as a periodical issue, anthology or encyclopedia, in which the Materials in their entirety in unmodified form, along with a number of other contributions, constituting separate and independent works in themselves, are assembled into a collective whole; "**CRC License**" means the Creative Commons Attribution-Non Commercial-No Derivs 3.0 Unported Agreement, the terms and conditions of which can be found at:

<http://creativecommons.org/licenses/by-nc-nd/3.0/legalcode>;

"**Derivative Work**" means a work based upon the Materials or upon the Materials and other pre-existing works, such as a translation, musical arrangement, dramatization, fictionalization, motion picture version, sound recording, art reproduction, abridgment, condensation, or any other form in which the Materials may be recast, transformed, or adapted; "**Institution**" means the institution, listed on the last page of this Agreement, by which the Author was employed at the time of the creation of the Materials; "**JoVE**" means MyJove Corporation, a Massachusetts corporation and the publisher of *The Journal of Visualized Experiments*; "**Materials**" means the Article and / or the Video; "**Parties**" means the Author and JoVE; "**Video**" means any video(s) made by the Author, alone or in conjunction with any other parties, or by JoVE or its affiliates or agents, individually or in collaboration with the Author or any other parties, incorporating all or any portion of the Article, and in which the Author may or may not appear.

2. **Background.** The Author, who is the author of the Article, in order to ensure the dissemination and protection of the Article, desires to have the JoVE publish the Article and create and transmit videos based on the Article. In furtherance of such goals, the Parties desire to memorialize in this Agreement the respective rights of each Party in and to the Article and the Video.

3. **Grant of Rights in Article.** In consideration of JoVE agreeing to publish the Article, the Author hereby grants to JoVE, subject to **Sections 4 and 7** below, the exclusive, royalty-free, perpetual (for the full term of copyright in the Article, including any extensions thereto) license (a) to publish, reproduce, distribute, display and store the Article in all forms, formats and media whether now known or hereafter developed (including without limitation in print, digital and electronic form) throughout the world, (b) to translate the Article into other languages, create adaptations, summaries or extracts of the Article or other Derivative Works (including, without limitation, the Video) or Collective Works based on all or any portion of the Article and exercise all of the rights set forth in (a) above in such translations, adaptations, summaries, extracts, Derivative Works or Collective Works and (c) to license others to do any or all of the above. The foregoing rights may be exercised in all media and formats, whether now known or hereafter devised, and include the right to make such modifications as are technically necessary to exercise the rights in other media and formats. If the "Open Access" box has been checked in **Item 1** above, JoVE and the Author hereby grant to the public all such rights in the Article as provided in, but subject to all limitations and requirements set forth in, the CRC License.

We thank the editor and the reviewers for the preliminary acceptance as well as the insightful comments and critiques. The protocol has been modified to address the reviewers' concerns and suggestions. We have included a point by point response to each question and/or remark.

Editorial comments:

1. All authors proofread the manuscript for spelling and grammar.
2. A total of 6 keywords/phrases are now included.
3. We have expanded the introduction to include relevant alternative techniques and previous studies. (Lines 58-68)
4. Generic names have been substituted for commercial product names in the text as requested.
5. Protocol steps were revised to imperative tense and suggested notes were moved to the discussion.
6. Approximate volume (5 mL) is now indicated in the text. (Line 91)
7. A short overview of enteroid/colonoid formation and maintenance in 3D culture has been added to the text (Lines 106-110). Many of the notes in the protocol that were better suited to the Discussion section were relocated accordingly (Lines 360-383 and 390-397).
8. Organoid Harvesting Solution and all other similar commercial product compositions are proprietary, so we are unable to list the specific components in the Table of Materials.
9. The discussion has been expanded to include limitations and future applications. (Lines 439-453)
10. The panels in Figure 1 have been resized to matching dimensions.
11. Table 1 has been uploaded as an .xlsx file.
12. Table of Materials has been alphabetized.

Reviewer #1:

1. Antibody and shRNA sources with catalog numbers were added to the Table of Materials.
2. Step 1.3 was amended as suggested.
3. Coated inserts can be stored at 4 °C for up to 1 week; this information has been added to the text. (Line 101)
4. A brief description of crypt isolation, 3D culture in basement membrane matrix (BMM/Matrigel), and apical and basolateral orientation has been added. (Lines 106-110)
5. The word 'material' is preferable in this case as we are referring to both BMM (Matrigel) and cells.
6. A brightfield image of colonoids post-trituration has been added to Figure 1, panel A.
7. We have added a sentence in the Discussion to explain that the optional incubation with trypsin and wash step is recommended if the user is having difficulties obtaining uniform fragments with trituration. (Lines 371-374)
8. We use transparent PET membrane Transwells, so no special handling is necessary to view cells on a standard light microscope.
9. The difference between 1 and 2 days is negligible and offers some flexibility, for example, when plating on a Thursday and then feeding on a Friday to avoid weekend maintenance. A standard 2 day interval between feedings is otherwise appropriate.

10. It does not appear to be standard practice in JoVE articles to refer to Figures in the Protocol section, so we are hesitant to breach this precedence. The author instructions designate Figures to be referenced in the Representative Results section.
11. We have included our recommendation for *E. coli* HS or EHEC infection and the suggestion that users measure the OD and infection time for their pathogen of interest. (Lines 385-388)
12. We have added a section on harvesting colonoid monolayers for immunoblotting. (Lines 240-257)
13. Author instructions requested a Representative Results section with reference to each of the figures (please also see our response to point #10). We have added asterisks to Figure 1 to designate the cell-free areas (black regions with no nuclei or F-actin present) and arrowheads to indicate F-actin perijunctional rings and brush border. Figure legends were adjusted to describe the days post-seeding for each image.
14. We and others have previously shown images of goblet cells (immunostained with MUC2 and/or WGA) and enteroendocrine cells (immunostained with CHGA) in 3D cultures and monolayers. Specific reference to these examples have been added (Lines 273-274). Clarke's fixative preserves the external mucus layer (Fig 4) but does not allow for intracellular staining of the goblet or enteroendocrine cells. Due to the novelty of studying the secreted mucus layer, we focused on that particular protocol.
15. We have clarified when the transductions are performed. Lentiviral transductions are performed in 3D cultures in order to generate a KD culture over indefinite passages. The KD culture is plated as monolayers for experimental purposes. (Lines 288-291)
16. We have added a section on harvesting monolayers for immunoblotting.
17. We have moved these lines, per reviewer's suggestion.
18. We and others have commented on the observation that EHEC appears to be colocalizing on or near the goblet cells. Our unpublished results and others' data suggest that EHEC is attaching to a component of the mucus layer via flagella or fimbria and utilizing the mucus as a nutrient source. We are actively working on this question.

Reviewer #2:

Introduction concerns

- The term 'serosal' has been changed to 'basolateral'.
- The microinjection citations have been added.
- The introduction now mentions specific withdrawal of inhibitors A-83-01 and SB 202190 during differentiation.

Methods concerns

- Criteria for including the optional trypsin digest before plating monolayers is now outlined in the Discussion. (Lines 371-374)
- Information about antibodies has been added to the Table of Materials.

Results concerns

- F-actin was chosen as a general marker that allows visualization of the entire cell morphology, including brush border, whereas TJ markers don't give that information.

Additionally, many TJ proteins are not uniformly expressed throughout the sub-confluent monolayers, which makes it difficult to follow the process of confluency formation.

- The images in Figure 2A are jejunal monolayers and has been updated in the legend; similar results are obtained from all segments. Our intent was to demonstrate that the general methodology works for any intestinal segment.
- Figure 3A shows the secreted mucus layer that covers all cells on the apical surface. This staining can only be performed when cells are subjected to an anhydrous acidic fixative such as Clarke's solution. We were not staining for intracellular MUC2, which is better visualized by buffered paraformaldehyde fixation and detergent permeabilization in our hands. Additionally, mucus location relative to the cell membranes would be ideal, but Clarke's fixation renders many epitopes unreactive to antibodies or phalloidin (for F-actin).
- Cell height/thickness, general growth rate to confluency, TER, and other measurable criteria are not significantly different between enteroids (small intestine) and colonoids (colon).

Discussion concerns

- To develop the technique for growing confluent enteroid/colonoid monolayers, we tested laminin, fibronectin, collagen IV and BMM (Matrigel). We were able to obtain small patches of monolayer-like growth on all the substrates, but only collagen IV supported reproducible formation of confluent monolayers. Therefore, we obtained negative data for the other ECMs. (Lines 407-408)
- We believe that human collagen IV as the insert coating is indispensable for longer-term confluent cultures than the previously published 6 d. If monolayers are kept in expansion medium, they remain stable and confluent for approximately 3 weeks, after which they were transitioned to differentiation medium for 1 additional week. We have not examined cultures beyond this period.