

Journal of Visualized Experiments

Hybrid clear/blue native electrophoresis for the separation and analysis of mitochondrial respiratory chain supercomplexes

--Manuscript Draft--

Article Type:	Invited Methods Article - JoVE Produced Video
Manuscript Number:	JoVE59294R2
Full Title:	Hybrid clear/blue native electrophoresis for the separation and analysis of mitochondrial respiratory chain supercomplexes
Keywords:	Mitochondria, respiratory chain, respiratory chain supercomplexes, Native electrophoresis, in-gel activity, immunoblot
Corresponding Author:	Yan Burelle
Corresponding Author's Institution:	
Corresponding Author E-Mail:	yburell2@uottawa.ca
Order of Authors:	Yan Burelle
	Alexanne Cuillerier
Additional Information:	
Question	Response
Please indicate whether this article will be Standard Access or Open Access.	Standard Access (US\$2,400)
Please indicate the city, state/province, and country where this article will be filmed . Please do not use abbreviations.	Ottawa, Ontario, CANADA

Ottawa, January 8th 2018

Object: Manuscript Submission

In response to the invitation sent by Dr. Ryan Mailloux, please find enclosed the final revision of our manuscript that we would like to submit for publication in the Methods Collection titled "Methods for the Assessment of Mitochondrial Bioenergetics and Functions".

We thank editorial reviewers for carefully going over our manuscript. Please find attached a point by point answer to 4 minor comments that were made and our revised manuscript

Best regards

A handwritten signature in blue ink, appearing to read 'Y. Burelle', with a stylized flourish at the end.

Yan Burelle, Ph.D.
University Research Chair in Integrative Mitochondrial Biology
Professor
Interdisciplinary School of Health Sciences, Faculty of Health Sciences
and Department of Cellular and Molecular Medicine, Faculty of Medicine,
Affiliated Scientist, Ottawa Hospital Research Institute
Université d'Ottawa
Pavillon Roger Guindon
Salle 2118
451 Smyth Road, Ottawa, Ontario
K1N 8M5
Lab website : www.burellelab.com

TITLE:

Hybrid Clear/Blue Native Electrophoresis for the Separation and Analysis of Mitochondrial Respiratory Chain Supercomplexes

AUTHORS AND AFFILIATIONS:

Alexanne Cuillerier and Yan Burelle

Interdisciplinary School of Health Science, Faculty of Health Sciences and Department of Cellular and Molecular Medicine, Faculty of Medicine, University of Ottawa, Ottawa, Canada

Corresponding Author:

Yan Burelle (yburell2@uottawa.ca)

Email Address of Co-author:

Alexanne Cuillerier (acuill042@uottawa.ca)

KEYWORDS:

mitochondria, respiratory chain, respiratory chain supercomplexes, native electrophoresis, in-gel activity, immunoblot

SUMMARY:

Here we present a protocol to extract, resolve and identify mitochondrial supercomplexes which minimizes exposure to detergents and Coomassie Blue. This protocol offers an optimal balance between resolution, and preservation of enzyme activities, while minimizing the risk of losing labile protein-protein interactions.

ABSTRACT:

Complexes of the oxidative phosphorylation machinery form supramolecular protein arrangements named supercomplexes (SCs), which are believed to confer structural and functional advantages to mitochondria. SCs have been identified in many species, from yeast to mammal, and an increasing number of studies report disruption of their organization in genetic and acquired human diseases. As a result, an increasing number of laboratories are interested in analyzing SCs, which can be methodologically challenging. This article presents an optimized protocol that combines the advantages of Blue- and Clear-Native PAGE methods to resolve and analyze SCs in a time-effective manner. With this hybrid CN/BN-PAGE method, mitochondrial SCs extracted with optimal amounts of the mild detergent digitonin are exposed briefly to the anionic dye Coomassie Blue (CB) at the beginning of the electrophoresis, without exposure to other detergents. This short exposure to CB allows to separate and resolve SCs as effectively as with traditional BN-PAGE methods, while avoiding the negative impact of high CB levels on in-gel activity assays, and labile protein-protein interactions within SCs. With this protocol it is thus possible to combine precise and rapid in gel activity measurements with analytical techniques

involving 2D electrophoresis, immuno-detection, and/or proteomics for advanced analysis of SCs.

INTRODUCTION:

Mitochondria produce energy through oxidative phosphorylation, where respiratory complexes I-II-III-IV oxidize substrates and transfer electrons to oxygen, generating a gradient that allows phosphorylation of ADP by the ATP synthase (CV). In the past years, extensive studies have shown that respiratory chain complexes are not solely incorporated in a linear way in the inner mitochondrial membrane, but are also organised into supercomplexes (SCs) arrangements^{1,2}. In mammalian mitochondria, SCs exist in varying stoichiometries: CI/CIII₂/CIV₁₋₄ (which is named the respirasome, and which is capable of NADH:O₂ oxidoreduction *in vitro*)², CI/CIII₂, and CIII₂/CIV₁₋₂^{3,4}. Furthermore, respiratory complexes are distributed under different ratios between their free form and SCs arrangements. Therefore, it is estimated that 85%–100% of CI, 55%–65% of CIII, and 15%–25% of CIV are found in SCs⁴. These supramolecular structures are thought to decrease ROS production, stabilize or assist in the assembly of individual complexes, regulate respiratory chain activity, and prevent protein aggregation in the protein rich inner mitochondrial membrane⁵⁻⁸. Their remodelling ability upon variation in energy demand and their importance in the pathogenesis of diseases is being investigated in several labs^{3,7,9-14}. Studies have demonstrated that pathological changes in SCs assembly are present in a variety of disorders, including, but not limited to, genetic defect in cardiolipin synthesis¹⁵, heart failure¹⁶, ischemia-reperfusion¹⁷, diabetes¹², and aging¹⁸.

Native electrophoresis and immunodetection are widely used in SCs studies to resolve OXPHOS complexes quaternary arrangements^{2,19-21}. Native electrophoresis can further be combined with specific in gel activity assays or 2D-SDS PAGE to enable precise molecular determination of the various SCs assemblies^{1,19}. The ability to study SCs is critically dependent on the extraction conditions, including type and concentration of detergent used, ionic strength and pH, as well as on electrophoretic migration conditions, which comprise buffer composition, presence of CB, gel size, and acrylamide percentage².

Protocols and SCs band resolution vary greatly among papers, making comparison between studies difficult and adaptation of methods challenging²². Therefore, this paper proposes a robust and optimal protocol to extract SCs from isolated mitochondria of different sources with the non-ionic detergent digitonin, and to resolve high molecular weight SCs bands. The optimized detergent concentration, composition of the extraction buffer, and the absence of Coomassie Blue in sample preparation minimize disruption of protein complexes. This protocol (see **Figure 1** for an overview) combines CN-PAGE and BN-PAGE for optimal SCs assemblies resolution on large gel, and is compatible with in-gel activity assays allowing better visualization of reactive bands, along with the use of immunodetection for a detailed analysis SCs arrangements and composition.

PROTOCOL:

1. SC Extraction

1.1. Prepare 100 mL of extraction buffer (see **Table 2**) by dissolving EDTA in water. Increase pH with KOH until completely dissolved, then adjust pH to 7.5 with HCl. Add remaining components to the solution, complete to final volume with water, and keep on ice. In a tube, dissolve digitonin in extraction buffer to make a 10% stock solution, vortex thoroughly until completely dissolved, and keep on ice.

NOTE: Extraction buffer can be prepared in advance and kept at 4 °C for 2 months maximum. If wavy bands start to appear at the bottom of the gel, it means extraction buffer is too old. When preparing the 10% digitonin solution, prepare a stock volume counting 500 µL per sample if using mouse liver mitochondria. Digitonin solubility varies upon provenance and product lot (see **Table of Materials**).

1.2. Mitochondria isolated from animal tissue (mouse heart, muscle, liver; rat heart) or cells human fibroblast) using standard protocols²³⁻²⁵ can be used for the extraction of SCs. Once mitochondria are obtained, quantify protein content using the bicinchoninic acid assay kit according to the manufacturer's recommendations. Supplement isolated mitochondria with proteases and phosphatases inhibitors at this step as needed.

NOTE: SCs can be extracted on either fresh or thawed mitochondria. It is recommended to extract SCs from all samples at the same time, to insure they are treated with the same batches of solutions and under the same conditions.

1.3. Based on the mitochondrial protein concentration obtained, and the final digitonin/protein ratio desired, calculate the volume of stock digitonin solution and extraction buffer required as per **Table 1**. For SC extraction, add 1 µL of extraction buffer (**Table 2**) containing digitonin for each 10 µg of mitochondrial protein. The digitonin/protein ratio can vary from 2 to 8 g/g. A digitonin titration should always be performed for each new type of sample used (See **Figure 2** for an example).

1.4. Pellet mitochondria, in a 1.5 mL tube by centrifugation at 16,000 x g for 10 min at 4 °C.

1.5. Discard supernatant and re-suspend the mitochondrial pellet in the calculated volume of ice-cold extraction buffer containing digitonin. Place tubes on a mini tube rotator and incubate for 30 min at 4 °C at a medium rotation speed. Make sure that samples are getting properly mixed.

1.6. Centrifuge samples at 20,400 x g for 45 min at 4 °C to remove insolubilized fragments.

1.7. Transfer supernatant in a new tube on ice and quantify proteins. This fraction represents the respiratory supercomplexes extract. If electrophoresis is not performed on the same day, store

samples at -80 °C.

NOTE: 1) Avoid freeze/thaw cycles of the extract, as this disrupts higher molecular arrangements of SCs. Aliquot sample before the first freeze/thaw cycle if needed. 2) To perform a standard BN-PAGE experiment, CB should be added to the SCs extract at this step. CB should be added in a 1g/8g ratio relative to the amount of detergent used.

2. Gradient gel Casting and Electrophoresis

2.1. Prepare 3x gradient buffer and acrylamide stocks for making the gradient gel, aliquot, and store at -20 °C (see **Table 3**).

2.2. Prepare anode and cathode buffers and keep at 4 °C (see **Table 5**).

2.3. Open the casting chamber and place an outer glass plate (20 cm x 22 cm) in the chamber. Position one set of spacers (1.5 mm) using the alignment card to ensure they are seated firmly against the side and corners of the chamber. Place an inner glass plate (20 cm x 20 cm) on top of the spacers (this forms the gel sandwich), and put a plastic separation sheet on top of the glass plate.

2.4. Repeat step 2.3 until the desired number of gels to cast is reached. For this protocol, 4 gels are casted. The casting chamber system we use (see **Table of Materials**) allows the casting of a maximum of 10 gels at a time. Take-up the remaining space in the chamber by first adding as many acrylic blocks as needed, and then glass plates if needed.

NOTE: The montage has to be tightly sealed; there should be no space between the gel sandwiches in the chamber.

2.5. Place a strip of parafilm in the groove before seating the gasket firmly in the gasket notch. Place the sealing plate on the chamber and tighten all 6 screws. Stand the casting chamber.

2.6. Place gradient former on a stir plate with a magnetic stirrer in the “light” mixing chamber. Connect the tubing of casting chamber to the gradient former, secure the tubing in the cassette of the peristaltic pump, and make sure the stopcock of the gradient former is closed.

2.7. To cast 4 gels, prepare 60 mL of 4% and 60 mL of 12% gel solutions (see **Table 4**) in an Erlenmeyer flask and swirl thoroughly to mix. Pour 60 mL of 4% gel solution in the “light” mixing chamber, and 60 mL of 12% in the “heavy” reservoir chamber of the gradient former. Set stir speed of the stir plate at 350 rpm. Open the stopcock and turn on the pump at 35 rpm.

2.8. Once the light fraction is lower than the heavy fraction, pause the pump and open the valve stem between “light” and “heavy” reservoirs, let fractions volume equilibrate, and restart the

pump.

NOTE: It is important that no bubbles enter the system and get trapped between glass plates. If this happens, undo montage, wash, and redo.

2.9. Once the gradient gel is completely poured, stop the pump, and overlay water (about 1 mL) on each gel sandwich to prevent drying of the gel. Let polymerize for 2 h.

2.10. Prepare 25 mL stacking gel in Erlenmeyer and swirl to mix thoroughly. Remove water and insert 15 well combs in each gel sandwich. Pour stacking gel and let polymerize for 2 h.

NOTE: Gels can be casted and kept at 4 °C for 1 week.

2.11. Insert gel in sandwich clamps and remove comb. With the short glass plate facing down, insert the gel sandwich in the cooling core. Repeat on the other side, and place core in the electrophoresis tank.

2.12. Pour 300 mL of Blue Cathode Buffer in inner chamber of the electrophoresis tank.

NOTE: The electrode has to be submerged in cathode buffer, which requires approximately 300 mL.

2.13. Load between 75 µg and 175 µg of protein per well. Run gel at 150 V for 1.5 h (or until samples have all entered the gradient gel) in cold room (4 °C).

Note 1: 1) A minimum of 75 µg per well is required for good resolution of in-gel activity bands. Loading over 175 µg of protein will lead to a loss of clear bands due to excessive enzyme activity. 2) Replicates of the sample should be loaded in separate wells to enable parallel determination of in-gel activities and immunoblot analysis of OXPHOS complexes. Parallel determination of IGA for CI, CII, CIV and CV requires a minimum of 300 µg. Parallel immunoblot analysis of CI, CII, CII, CIV and CV requires a minimum of 375 µg.

2.14. Remove Blue Cathode Buffer with pipet or vacuum, replace by 300 mL Coomassie Blue-free Cathode Buffer, and run gel at 200 V overnight (16–20 h) in cold room (4 °C). Proceed to step 3 or 4 for in-gel activity measurement or immunoblotting.

3. In-gel Activity for Complexes I, II, IV and CV

3.1. Before the end of electrophoresis, prepare in-gel activity buffers according to **Table 6**, and keep in the dark at RT. 20 mL of in-gel activity buffer is sufficient for 3 sample lanes.

NOTE: This CV in-gel activity assay is based on the reverse activity of ATPsynthase (i.e., ATP hydrolysis), and uses calcium as a co-factor, which precipitates in the gel. Calcium is less harmful than the lead used in other protocols. Furthermore, the use of this protocol does not require a

pre-activation/conditioning of the gel²³.

3.2. Stop electrophoresis and retrieve gel. Cut lanes, if necessary, and transfer gel lanes in plastic bags (3 sides cut, and plastic bag opened like a book). Seal 2 of the 3 sides with a heat sealer.

NOTE: To compare the composition of SC bands between experimental groups, it is recommended to run the same samples in replicates on the same gel. Cut lanes to incubate each replicate in different in-gel activity buffers (CI, II, IV, V). To confirm the specificity of the assays, additional replicates can be prepared to run in gel activities in presence of specific respiratory chain inhibitors.

3.3. For 3 experimental samples (i.e. 3 wells), add 20 mL of in-gel activity buffer, remove bubbles, and seal 4th side of plastic bag.

NOTE: Add inhibitors in negative control experiments if performed: CI: Rotenone 1 μ M; CII: Sodium Malonate 10 mM; CIII: Antimycin-A 8 μ M; CIV: KCN 0.6 mM; CV: Oligomycin 0.5 μ M.

3.4. Incubate gel lanes at 37 °C in the dark and check every 15 min. Incubation time varies depending on the amount of protein and complexes. CI will react faster than CIV or CV. Optimal staining usually occurs after 2 h for CI, 4 h for CIV and 6 h for CII and CV.

3.5. Rinse gel lanes in water to stop reaction, and image on a white background for CI, CII, CIV, or black background for CV.

NOTE: Gels can be kept in plastic bags at RT or 4 °C for several months.

4. Immunoblotting

4.1. Prepare transfer buffer according to **Table 7**, and keep at RT. Prepare TBST and keep at RT.

4.2. Place the entire gel, or selected lanes, in a container and add transfer buffer supplemented with SDS (0.25% final in transfer buffer). Place container on rocker and incubate for 1 h.

4.3. Cut PVDF membrane (size corresponding to the size of the gel) and activate in 20 mL of methanol under agitation for 2 min. Replace by 20 mL transfer buffer and place under agitation for 2 min.

4.4. Prepare transfer sandwich, from bottom to top, making sure there is no bubble between gel and activated PVDF membrane: clear side of cassette / black sponge / blotting paper / membrane / gel / blotting paper / black sponge / black side of cassette. Close and lock the cassette.

4.5. Place transfer sandwich in transfer tank, with clear side of the sandwich facing the red side of the electrode, and pour transfer buffer to immerse the gel. Connect cooling system to the

transfer tank and set at 4 °C. Connect to the power supply, set at 40 mA, and run for 24 h.

4.6. Retrieve membranes, block for 1 h in 5% BSA in TBST, and incubate in primary antibody solution prepared in 5% BSA in TBST overnight at 4 °C.

NOTE: See **Table 8** for antibodies used.

4.7. Rinse membranes in TBST 3x for 10 min each.

4.8. Incubate membranes in secondary antibody solutions prepared in 5% BSA in TBST for 2 h at room temperature.

4.9. Rinse membranes in TBST 3x for 10 min each.

4.10. Add chemiluminescent solution to membranes and image.

5. Analysis

5.1. In-gel activity assay images or immunoblots can be used to analyze SCs. To analyze composition of bands, align replicates and validate which complex reacted positively for each given band.

5.2. To analyze the distribution of complexes, in various supramolecular assemblies, open images in ImageJ and use the Gel analysis tool (see **Figure 5** for an example).

5.2.1. Select lanes with the rectangle tool, and plot lanes.

5.2.2. Draw lines to close the area under the curve of each bands of interest and click on each area with the wand tool to generate a Table containing the area under the curve values.

5.2.3. To calculate the distribution of the complex, report the values for each band relative to that of the monomer.

REPRESENTATIVE RESULTS:

Figure 2 shows results from a digitonin titration experiment aimed to identify the proper amount of digitonin required for the extraction of SCs. This amount will vary depending on the tissue/cell type and whether the sample was frozen or not. For this experiment, a CIV in-gel activity was performed to visualize SCs isolated from fresh mouse liver mitochondria. Ratios from 2/1 to 10/1 g digitonin/g of protein were tested. The optimal amount of digitonin for this sample is 4 g/g, as it provides a good resolution of monomeric CIV, and high molecular weight SCs. At a lower ratio, bands are not clear and resolve into a smear during electrophoresis, whereas the use of higher ratio of digitonin leads to disruption of high molecular weight SC.

Figure 3 and **Figure 4** show the results of a complete experiment performed on a preparation of

mouse liver mitochondria extracted with 4 g digitonin /g protein. Proteins were separated using hybrid BN/CN-PAGE, standard BN-PAGE, or CN-PAGE. All three gels were casted at the same time and lanes were loaded with replicates of the same sample. Following electrophoresis, individual lanes were cut and processed for in gel activity measurement (CI, CII, CIV and CV on **Figure 3**) and immunoblotting (CI, CII, CIII, CIV, CV on **Figure 4**).

Addition of CB either momentarily in cathode buffer (i.e. hybrid CN/BN-PAGE) or in sample and cathode buffer throughout electrophoresis (i.e. BN-PAGE), considerably improves the mobility and resolution of SC bands, and individual respiratory complexes compared to CN-PAGE (**Figure 3**). Bands are easily distinguishable with the hybrid technique or BN-PAGE after in-gel activity for CIV, whereas in the same sample resolved by CN-PAGE, SCs and monomeric CIV reactive bands cannot be identified.

Figure 3 and **Figure 4** show that the resolution and banding pattern of OXPHOS monomers and supramolecular assemblies is qualitatively comparable between hybrid CN/BN-PAGE and BN-PAGE. However, notable differences exist. First, the electrophoretic mobility of OXPHOS complexes is slightly reduced when proteins are separated using hybrid CN/BN-PAGE conditions vs standard BN-PAGE, due to reduced amount of CB. This mobility shift is greater for CIV monomers, followed by CV monomers, and CI (**Figure 3** and **Figure 4**). Second, the blue background is lower in the hybrid CN/BN-PAGE compared to BN-PAGE (**Figure 3**, left lanes). As a result, high background levels following BN-PAGE completely masks the in-gel activity staining for CII, and enhances the background noise associated with the activity of CIV dimers (**Figure 3**). Third, the activity of CV is higher when samples are run under hybrid CN/BN-PAGE conditions compared to BN-PAGE (**Figure 3**), due to the reduced amount of CB, which is known to interfere with CV catalytic activity.²⁶ CN/BN-PAGE also allows better preservation of CV supramolecular assemblies, as shown by a greater proportion of total CV activity being associated with CV dimers (**Figure 3**). Moreover, CV oligomers are visible under CN/BN-PAGE, while they are completely dissociated under BN-PAGE conditions. Interestingly, distinct bands displaying CV activity are also observed between CV monomers and dimers, when samples are run under CN/BN-PAGE (**Figure 2**).

Figure 5 shows a representative analysis of OXPHOS complex distribution in supramolecular assemblies. The image shows CI in gel activity of samples obtained from 4 distinct healthy mouse liver mitochondria preparations. Densitometry analysis allows to measure the area under the curve of CI-reactive bands, and to present the relative distribution of C1 activity in the monomeric (I_1) and supramolecular forms (I_1III_2 , $I_1III_2IV_1$, $I_1III_2IV_n$). Similar analysis can be performed following immunoblot.

FIGURE AND TABLE LEGENDS:

Figure 1: Assay workflow.

Figure 2: Digitonin titration to extract supercomplexes from fresh mouse liver mitochondria. This example shows aliquots of mouse liver mitochondria, isolated from one animal that was

341 treated with increasing amounts of digitonin to extract respiratory supercomplexes. Samples
342 were then resolved by hybrid CN/BN PAGE, and in-gel activity of CIV was determined. CIV₁:
343 complex IV monomers; CIV₂: Complex IV dimers; SC: supercomplexes.

344
345 **Figure 3: In-gel activity of OXPHOS complexes following hybrid CN/BN-PAGE, BN-PAGE or CN-**
346 **PAGE.** Liver mitochondria isolated from one mouse were treated with digitonin (4 g/g ratio
347 digotonin/protein) to extract respiratory supercomplexes. Aliquots of this sample were then
348 loaded on multiple wells in three distinct gels and submitted to CN/BN-PAGE, BN-PAGE or CN-
349 PAGE. Each replicate lane within each gel was then cut and immediately used for in-gel activity
350 assays (labeled CI, CII, CIV and CV). One lane was used as control to show background (labeled
351 BG) staining with Coomassie Blue. OXPHOS complexes and supramolecular assemblies are
352 identified using the standard nomenclature, with numbers in indices indicating the molecular
353 stoichiometry of each OXPHOS complex. It should be noted that the position of CIII-containing
354 supramolecular assemblies is based on immunodetection since in-gel activity for CIII was not
355 performed in this particular experiment.

356
357 **Figure 4: Immunoblot analysis of OXPHOS complexes following hybrid CN/BN-PAGE or BN-**
358 **PAGE.** Replicates from the experiments described in the **Figure 3** legend were electro-transferred
359 on a single membrane. After transfer, individual lanes were cut and incubated with specific
360 antibodies recognizing CI, CII, CIII, CIV, and CV. OXPHOS complexes and supramolecular
361 assemblies are identified using the standard nomenclature, with numbers in indices indicating
362 the molecular stoichiometry of each OXPHOS complex.

363
364 **Figure 5: Quantification of CI distribution in monomeric and supramolecular assemblies. (A)** CI
365 in-gel activity determined following Hybrid CN/BN-PAGE of in liver mitochondria SC extracts
366 obtained from 4 mice. **(B)** Densitograms obtained using ImageJ's Gel Analysis Tool showing
367 distinct peaks corresponding to CI monomers (I₁) and various CI-containing supramolecular
368 complexes (I₁III₂, I₁III₂IV₁, and I₁III₂IV_n). **(C)** quantification of the relative distribution of C1 activity.
369 The data represent mean and SEM of the 4 mice.

370
371 **Table 1: Volumes required to extract SCs from 5 mg of mitochondrial proteins using various**
372 **digitonin/protein ratios.**

373
374 **Table 2: SC extraction buffer (final concentrations).** Keep at 4 °C for a maximum of 3 months.

375
376 **Table 3: Gel stock buffers.**

377
378 **Table 4: 4%–12% gradient gel.**

379
380 **Table 5: Electrophoresis buffers.**

381
382 **Table 6: In-gel activity assay buffers.**

383
384 **Table 7: Immunoblotting buffers.**

Table 8: Antibodies used for immunoblotting to detect respiratory chain SC. See Table of Materials for companies and lot numbers.

DISCUSSION:

Mitochondrial supercomplexes are being actively studied to elucidate their physiological role, and their importance in the pathogenesis of numerous human diseases, whether they are acquired or genetic mitochondrial diseases^{3,7,9-14}. In order to obtain reliable results, several aspects need to be considered. This protocol has been tested with mouse liver mitochondria, mouse skeletal muscle mitochondria (results not shown), rat heart mitochondria, and human fibroblast mitochondria (results not shown), but could certainly be adapted to other sources of isolated mitochondria. The method optimally combines various aspects of BN and CN-PAGE protocols, which allow to reduce exposure to detergents and anionic compounds to a minimum compared to published protocols^{20,27,28}.

Sample preparation

Sample preparation represents a crucial step for successful separation of SCs. Buffer composition should be carefully selected in order to achieve proper solubilization of proteins and proteins assemblies, while preserving as much as possible their functional and structural integrity. Ionic strength and pH of the extraction buffer are two important factors to consider. Salt concentrations that are too low (< 50 mM K-Acetate or NaCl) will result in poor solubilization of proteins in presence of non-ionic detergents, while salt concentrations above 500 mM will promote protein stacking/aggregation, and precipitation of CB and proteins²⁹. SCs should therefore be extracted using buffers at near physiological ionic strength. With regards to pH, the use of a near physiological pH is recommended.

Detergent type and detergent/protein ratio are also critical for optimal SC extraction. For maximal preservation of native SCs, digitonin is preferred²⁶. As shown in the present protocol and other published methods^{23,30-32}, this mild detergent preserves the supramolecular composition of multiple SC assemblies, and the dimeric and oligomeric structure of ATPsynthase (**Figure 3** and **Figure 4**). Titration of the samples of interest with various amounts of digitonin is critical in order to identify the conditions that allow optimal solubilization, while preserving enzyme activity and physiological protein interactions. Titration should be performed with ratios ranging between 2 and 8 g/g²⁶. Optimal results for liver, skeletal muscle and cardiac mitochondria are respectively obtained with 4, 5, and 6 g digitonin/g protein. It should be noted that digitonin can be replaced by Triton X-100, which under optimal conditions results in similar migration and SC composition as those observed with digitonin². However, this detergent should be used with caution, since relatively small increase in the detergent/protein ratio (e.g., from 1 to 1.5 g/g) can result in a complete dissociation of SCs assemblies², which can result in experimental inconsistencies. After extraction, samples are traditionally supplemented with Coomassie Blue to give proteins a charge when applied to the gel, except for traditional CN-PAGE^{20,26}. In order to minimize protein exposure to Coomassie blue and potential dissociation of labile proteins,

samples are not supplemented with Coomassie blue in this protocol.

Electrophoresis

Both CN-PAGE and BN-PAGE have been used to study mitochondrial OXPHOS complexes, each of them having distinct advantages and limitations. The milder conditions used under CN-PAGE (mainly the absence of CB, which has a detergent-like effect), allows better preservation of ATP synthase in-gel activity, and limits the dissociation of labile proteins in high molecular weight SCs and ATP synthase assemblies²⁶. However, the absence of the anionic dye CB in the protein extract and electrophoresis buffers causes the proteins to migrate based on their intrinsic charge and isoelectric point, which reduces the electrophoretic mobility of proteins within the gel²⁶. Moreover, in the absence of CB, proteins with insufficient negative charge tend to aggregate, thus reducing the resolution of protein complexes in the gel^{20,26}. To circumvent these limitations, the so-called high-resolution CN-PAGE has been developed by Wittig and Schragger²⁰. In this protocol, sodium deoxycholate (DOC) and various mild non-ionic detergents (DDM, Triton X100) are added to the cathode buffer to keep membrane proteins solubilized and impose a negative charge shift on proteins, which results in a considerable improvement of resolution²⁰.

A distinctive feature of the present hybrid CN/BN protocol is that a comparable resolution can be reached without these detergents. Momentary addition of CB to the cathode buffer at the beginning of the electrophoresis is sufficient to limit protein aggregation and enhance mobility in the gel (**Figure 3** and **Figure 4**). As a result, this hybrid technique enables excellent resolution of distinct SC assemblies and very low or no exposure to detergents. The presence of low amounts of CB also allows better preservation of CV activity, improved preservation of dimeric and oligomeric CV assemblies (**Figure 3** and Wittig and Schagger 2005²⁶), and a reduction of the blue background noise that can hinder the quantification of in gel activities, particularly for CII and CIV (**Figure 2**). Moreover, the absence of CB in the protein extract limits the disruption of labile protein interactions within SCs. For example, physical association of the ATP synthase with ANT to form the syntasome³³ or with Cyclophilin-D to regulate PTP opening³⁴ are better seen in absence of CB. Momentary exposure to CB during electrophoresis only may therefore be useful to reveal novel protein interactions within SCs. Overall, this hybrid CN/BN-PAGE protocol thus allows to combine precise and rapid in gel activity measurements with analytical techniques involving 2D electrophoresis, immuno-detection and/or proteomics for advanced analysis of SCs. It should be noted that with the growing interest for SCs, an increasing number of studies use small 10 x 10 cm gels for native PAGE. While this approach may be sufficient to identify gross changes in the abundance SC assemblies, the lower separation capacity of small gels is likely limited to resolve subtle rearrangements or to cut distinct bands for proteomic analysis. Moreover, several studies using smaller gels have reported that the respirasome migrates at the same size as the ATPsynthase dimer, making it difficult to dissociate them²². Therefore, the use of large gels should be favored.

ACKNOWLEDGMENTS:

The authors would like to thank Jenna Rossi for technical assistance, and Dr. Mireille Khacho, Dr. David Patten and Dr. Ujval Anil Kumar for helpful discussion while developing this method. This work was funded by the Canadian Institutes of Health Research (CIHR) and the National Sciences

and Engineering Council of Canada (NSERC). AC is a recipient of Doctoral Award - Frederick Banting and Charles Best Canada Graduate Scholarships (CIHR).

DISCLOSURES:

None

REFERENCES:

- 1 Shagger, H. Respiratory Chain Supercomplexes. *IUBMB Life*. **52** (3-5), 119-128 (2001).
- 2 Acin-Perez, R., Fernandez-Silva, P., Peleato, M. L., Perez-Martos, A., Enriquez, J. A. Respiratory active mitochondrial supercomplexes. *Molecular Cell*. **32** (4), 529-539 (2008).
- 3 Greggio, C. et al. Enhanced Respiratory Chain Supercomplex Formation in Response to Exercise in Human Skeletal Muscle. *Cell Metabolism*. **25** (2), 301-311 (2017).
- 4 Schagger, H., Pfeiffer, K. The ratio of oxidative phosphorylation complexes I-V in bovine heart mitochondria and the composition of respiratory chain supercomplexes. *Journal of Biological Chemistry*. **276** (41), 37861-37867 (2001).
- 5 Milenkovic, D., Blaza, J. N., Larsson, N. G., Hirst, J. The Enigma of the Respiratory Chain Supercomplex. *Cell Metabolism*. **25** (4), 765-776 (2017).
- 6 Acin-Perez, R., Enriquez, J. A. The function of the respiratory supercomplexes: the plasticity model. *Biochimica et Biophysica Acta*. **1837** (4), 444-450 (2014).
- 7 Vartak, R., Porras, C. A., Bai, Y. Respiratory supercomplexes: structure, function and assembly. *Protein Cell*. **4** (8), 582-590 (2013).
- 8 Lapuente-Brun, E. et al. Supercomplex Assembly Determines Electron Flux in the Mitochondrial Electron Transport Chain. *Science*. **340** (6140), 1567-1570 (2013).
- 9 Lazarou, M., Smith, S. M., Thorburn, D. R., Ryan, M. T., McKenzie, M. Assembly of nuclear DNA-encoded subunits into mitochondrial complex IV, and their preferential integration into supercomplex forms in patient mitochondria. *The FEBS Journal*. **276** (22), 6701-6713 (2009).
- 10 Sun, D., Li, B., Qiu, R., Fang, H., Lyu, J. Cell Type-Specific Modulation of Respiratory Chain Supercomplex Organization. *International Journal of Molecular Sciences*. **17** (6) (2016).
- 11 D'Aurelio, M., Gajewski, C. D., Lenaz, G., Manfredi, G. Respiratory chain supercomplexes set the threshold for respiration defects in human mtDNA mutant cybrids. *Human Molecular Genetics*. **15** (13), 2157-2169 (2006).
- 12 Antoun, G. et al. Impaired mitochondrial oxidative phosphorylation and supercomplex assembly in rectus abdominis muscle of diabetic obese individuals. *Diabetologia*. **58** (12), 2861-2866 (2015).
- 13 Kanaan, G. N., Patten, D. A., Redpath, C. J., Harper, M.-E. Atrial Fibrillation Is Associated With Impaired Atrial Mitochondrial Energetics and Supercomplex Formation in Adults With Type 2 Diabetes. *Canadian Journal of Diabetes*. <https://doi.org/10.1016/j.jcjd.2018.05.007> (2018).
- 14 Kuter, K. et al. Adaptation within mitochondrial oxidative phosphorylation supercomplexes and membrane viscosity during degeneration of dopaminergic neurons in an animal model of early Parkinson's disease. *Biochimica et Biophysica Acta*. **1862** (4),

741-753 (2016).

15 McKenzie, M., Lazarou, M., Thorburn, D. R., Ryan, M. T. Mitochondrial Respiratory Chain Supercomplexes Are Destabilized in Barth Syndrome Patients. *Journal of Molecular Biology*. **361** (3), 462-469 (2006).

16 Rosca, M. G. et al. Cardiac mitochondria in heart failure: decrease in respirasomes and oxidative phosphorylation. *Cardiovascular Research*. **80** (1), 30-39 (2008).

17 Jang, S. et al. Elucidating Mitochondrial Electron Transport Chain Supercomplexes in the Heart During Ischemia-Reperfusion. *Antioxidants & Redox Signaling*. **27** (1), 57-69 (2017).

18 Frenzel, M., Rommelspacher, H., Sugawa, M. D., Dencher, N. A. Ageing alters the supramolecular architecture of OxPhos complexes in rat brain cortex. *Experimental Gerontology*. **45** (7), 563-572 (2010).

19 Krause, F. Detection and analysis of protein-protein interactions in organellar and prokaryotic proteomes by native gel electrophoresis: (Membrane) protein complexes and supercomplexes. *Electrophoresis*. **27** (13), 2759-2781 (2006).

20 Wittig, I., Karas, M., Schagger, H. High Resolution Clear Native Electrophoresis for In-gel Functional Assays and Fluorescence Studies of Membrane Protein Complexes. *Molecular Cell Proteomics*. **6**, 1215-1225 (2007).

21 Wittig, I., Braun, H. P., Schagger, H. Blue native PAGE. *Nat Protoc*. **1** (1), 418-428 (2006).

22 Jang, S., Javadov, S. Current Challenges in Elucidating Respiratory Supercomplexes in Mitochondria: Methodological Obstacles. *Frontiers in Physiology*. **9**, 238-238 (2018).

23 Cuillerier, A. et al. Loss of hepatic LRPPRC alters mitochondrial bioenergetics, regulation of permeability transition and trans-membrane ROS diffusion. *Human Molecular Genetics*. **26** (16), 3186-3201 (2017).

24 Pallotti, F., Lenaz, G. in *Methods in Cell Biology*. Vol. 80, 3-44. Academic Press (2007).

25 Wieckowski, M. R., Giorgi, C., Lebiedzinska, M., Duszyński, J., Pinton, P. Isolation of mitochondria-associated membranes and mitochondria from animal tissues and cells. *Nature Protocols*. **4**, 1582 (2009).

26 Wittig, I., Schagger, H. Advantages and limitations of clear-native PAGE. *PROTEOMICS*. **5** (17), 4338-4346 (2005).

27 Jha, P., Wang, X., Auwerx, J. Analysis of Mitochondrial Respiratory Chain Supercomplexes Using Blue Native Polyacrylamide Gel Electrophoresis (BN-PAGE). *Current Protocols in Mouse Biology*. **6** (1), 1-14 (2016).

28 Au - Beutner, G., Au - Porter Jr, G. A. Analyzing Supercomplexes of the Mitochondrial Electron Transport Chain with Native Electrophoresis, In-gel Assays, and Electroelution. *Journal of Visualized Experiments*. (124) e55738, doi:10.3791/55738 (2017).

29 Von Hagen, J. *Proteomics Sample Preparation*. 485. Wiley InterScience (2008).

30 Couoh-Cardel, S. J., Uribe-Carvajal, S., Wilkens, S., García-Trejo, J. J. Structure of dimeric F1F0-ATP synthase. *The Journal of Biological Chemistry*. **285** (47), 36447-36455 (2010).

31 Strauss, M., Hofhaus, G., Schröder, R. R., Kühlbrandt, W. Dimer ribbons of ATP synthase shape the inner mitochondrial membrane. *The EMBO Journal*. **27** (7), 1154-1160 (2008).

32 Schagger, H., Pfeiffer, K. Supercomplexes in the respiratory chains of yeast and mammalian mitochondria. *The EMBO Journal*. **19** (8), 1777-1783 (2000).

33 Wittig, I., Schagger, H. Structural organization of mitochondrial ATP synthase. *Biochimica*

558 *et Biophysica Acta - Bioenergetics*. **1777** (7), 592-598 (2008).
559 34 Giorgio, V. et al. Dimers of mitochondrial ATP synthase form the permeability transition
560 pore. *Proceedings of the National Academy of Sciences of the United States of America*.
561 **110** (15), 5887 (2013).
562

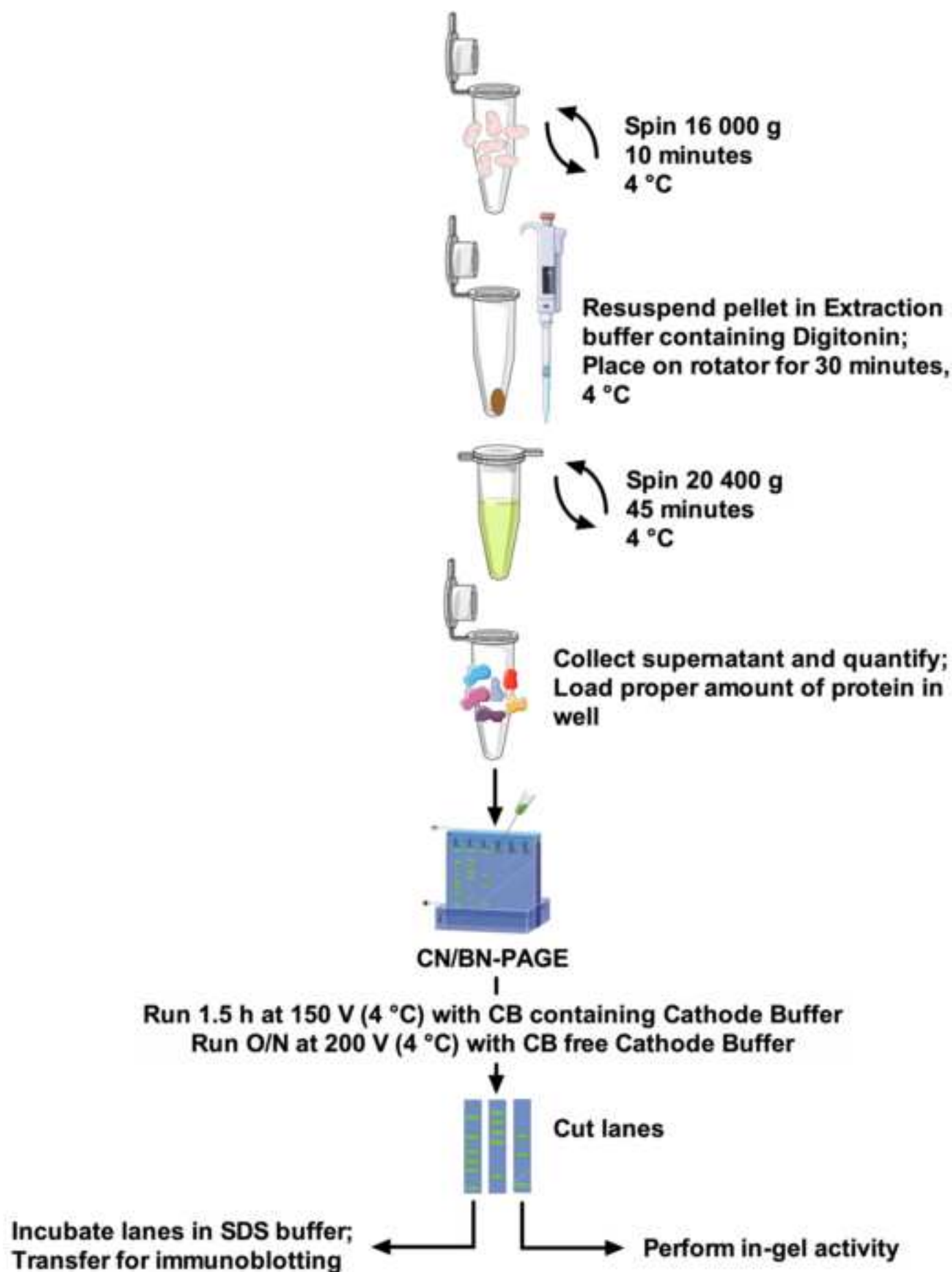


Figure 2

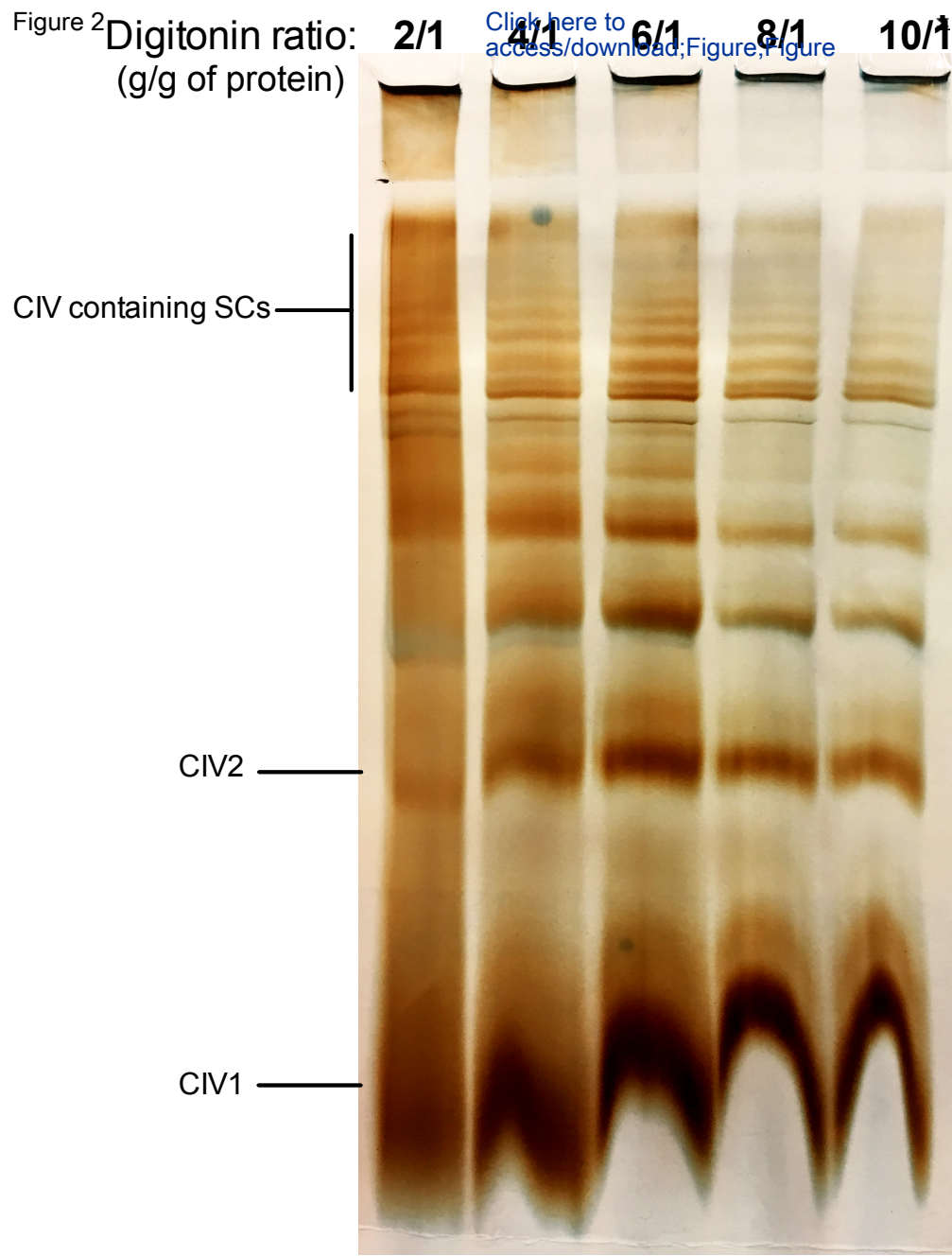


Figure 3

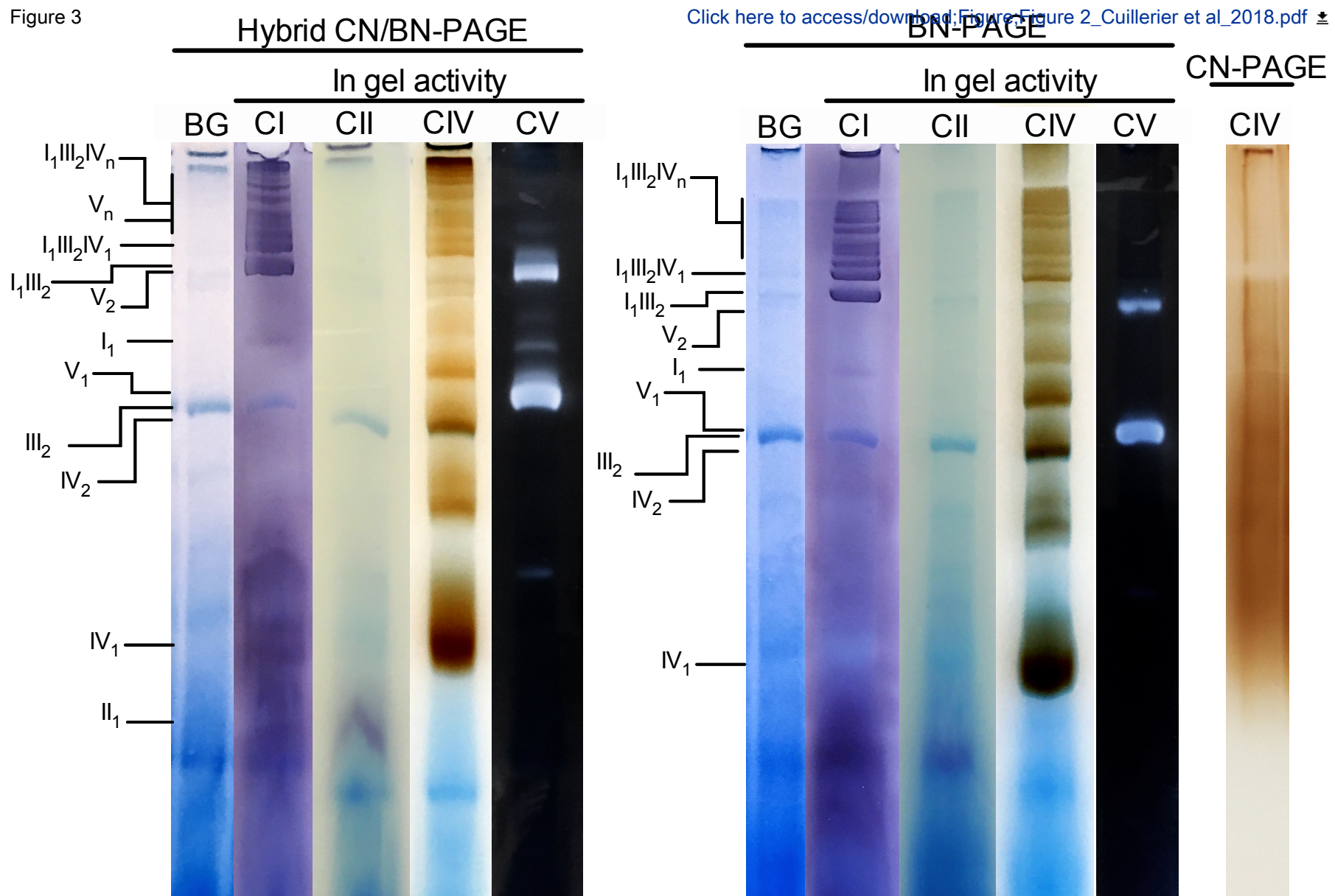


Figure 4

Hybrid CN/BN-PAGE Immunoblot

[Click here to access/download/Figure-Figure 3_Cuillerier et al_2018.pdf](#)



BN-PAGE Immunoblot

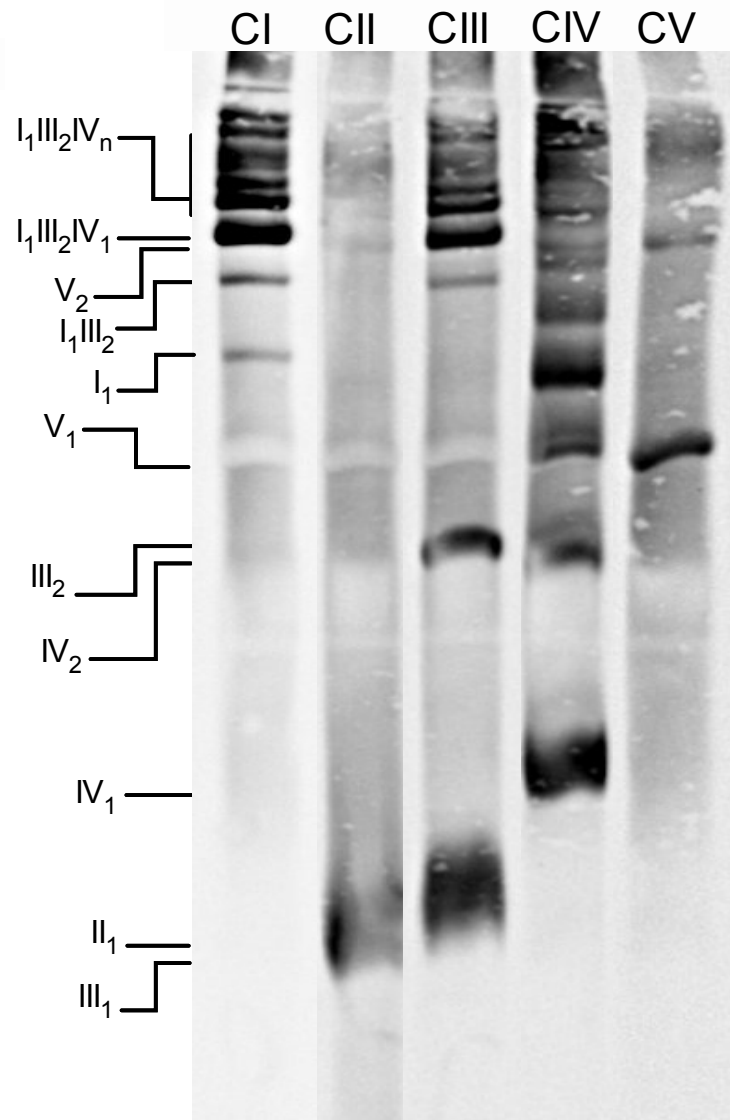
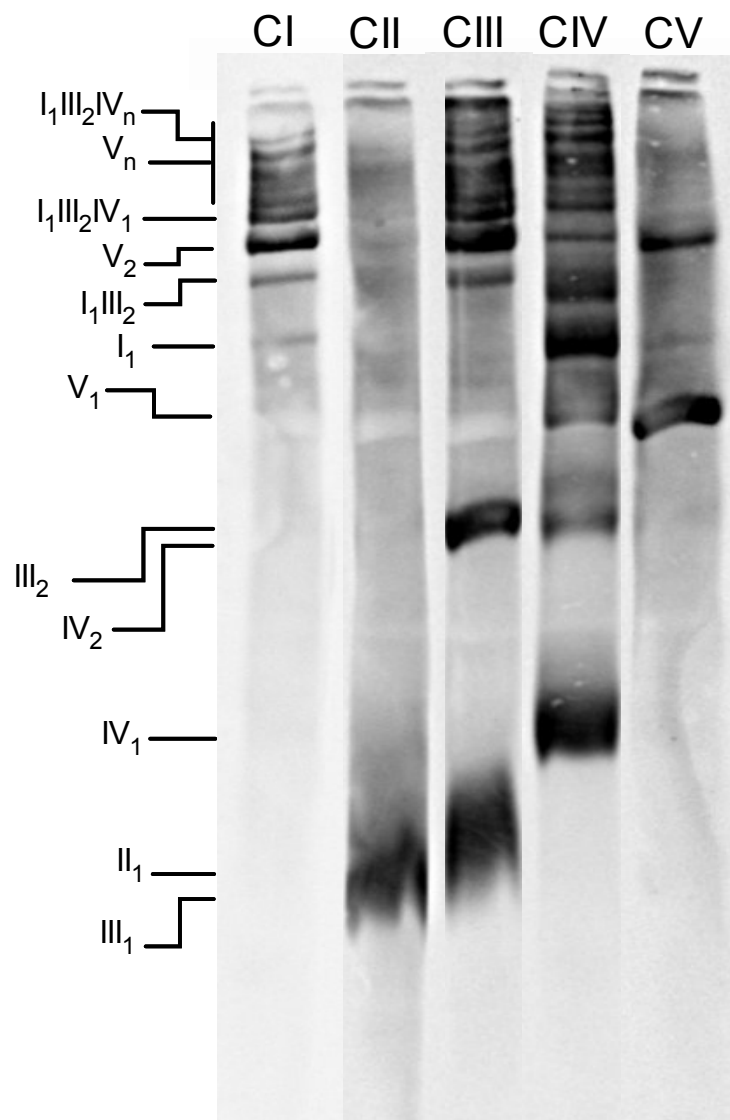
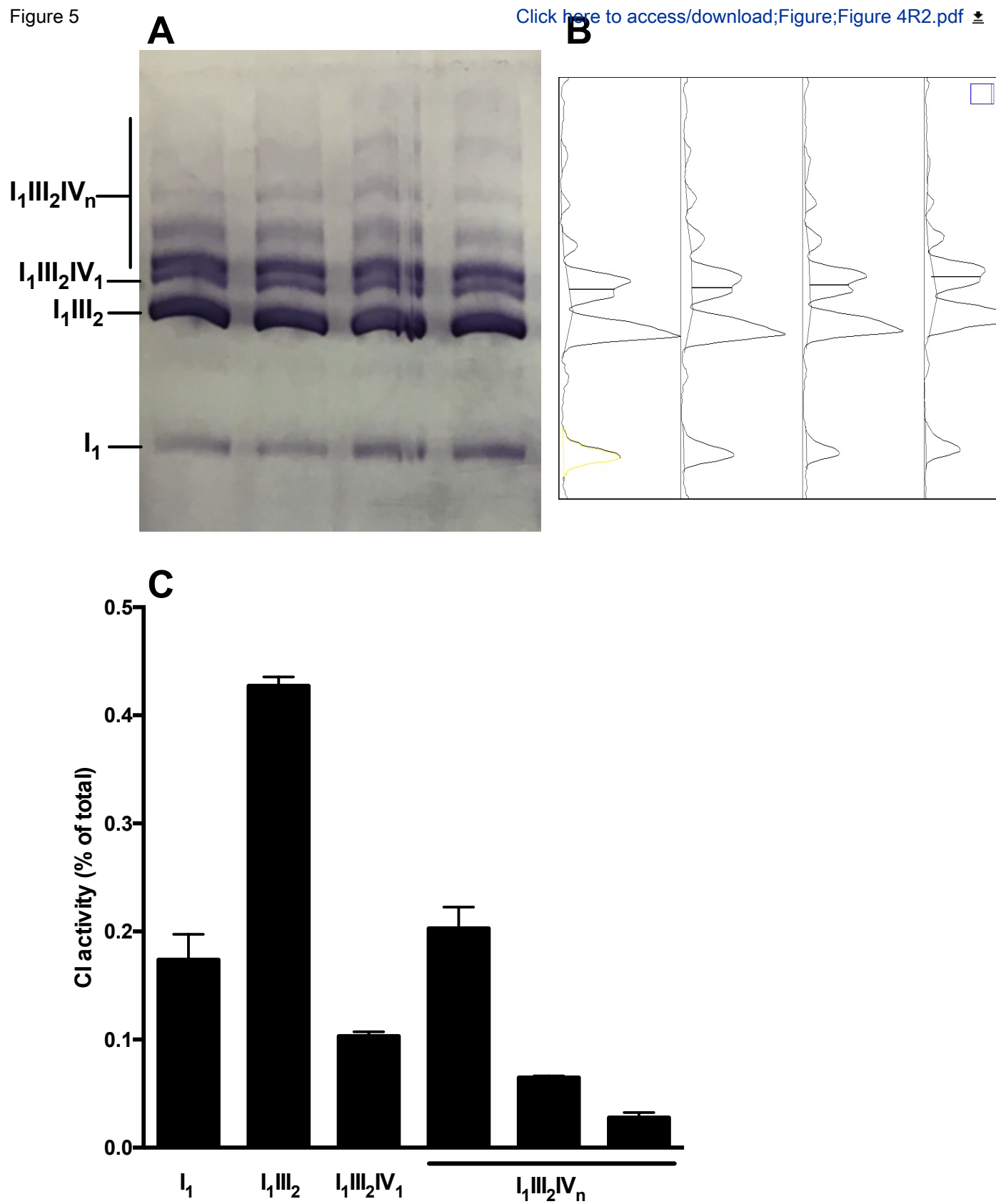


Figure 5



Digitonin/protein ratio (g/g)	2 g/g	4 g/g	6 g/g	8 g/g
Volume of extraction buffer (µL)	400	300	200	100
Volume of 10 % stock digitonin (µL)	100	200	300	400
Total extraction buffer volume (µL)	500	500	500	500

Table 2

Compound	Final Concentration
EDTA, pH 7.5	1 mM
HEPES	30 mM
Potassium Acetate	150 mM
Glycerol	12%
6-aminocaproic Acid	2 mM

Compound	Final Concentration
3X Gel Buffer: Aliquot and keep at -20 °C, pH 7.5	
Imidazole/HCl pH-7.0	75 mM
6-aminocaproic Acid	1.5 M
Acrylamide Buffer: Aliquot and keep at -20 °C	
Acrylamide	99.5%
Bis-Acrylamide	3%

For 2 gels:	4% (60 mL)	12% (60 mL)	Stacking (4%) (25 mL)
3X Gel Buffer	19.8 mL	19.8 mL	8.25 mL
Acrylamide Buffer	4.8 mL	14.4 mL	2 mL
H ₂ O	35 mL	13.1 mL	14.6 mL
Glycerol	-	12 mL	-
APS 10%	360 µL	60 µL	150 µL
TEMED	24 µL	12 µL	10 µL

Compound	Final Concentration
Anode Buffer: Keep at 4 °C, pH 7.5	
Imidazole	25 mM
Cathode Buffer: Keep at 4 °C, pH 7.5	
Tricine	50 mM
Imidazole	7.5 mM
With or without Coomassie Blue (G250)	0.022%

Compound	Final Concentration
Complex I activity Buffer: prepare fresh in 5 mM TRIS-HCl pH 7.4	
Nitrotetrazolium blue	3 mM
NADH	14 mM
Complex II activity Buffer: prepare fresh in 5 mM TRIS-HCl pH 7.4	
Succinate	20 mM
PMSF	0.2 mM
Nitrotetrazolium blue	3 mM
Complex IV activity Buffer: prepare fresh in 50 mM Na-Phosphate pH 7.2	
Cytochrome C	0.05 mM
Diaminobenzidine	2.3 mM
ATPsynthase activity Buffer: prepare fresh in water, adjust pH to 8 with KOH	
Glycine	50 mM
MgCl ₂	5 mM
HEPES	50 mM
CaCl ₂	30 mM
ATP	5 mM

Table 7

Compound	Final Concentration
Transfer Buffer	
Tris Base	25 mM
Glycine	192 mM
SDS	4%
Methanol	20%
TBST	
Tris Base	20 mM
NaCl	137 mM
Tween 20	0.1%

Complex	Subunit	Clone
I	NDUFA9	20C11B11B11
II	SDHA	2E3GC12FB2AE2
III	UQCRC2	13G12AF12BB11
IV	COX4	1D6E1A8
V	ATPB	3D5

Name of Material/ Equipment

3,3'-Diaminobenzidine tetra-hydrochloride hydrate
 6-amino caproic acid
 Acrylamide
 Adenosine 5'-triphosphate disodium salt hydrate
 Anti-ATPB antibody [3D5] - Mitochondrial Marker
 Anti-SDHA antibody [2E3GC12FB2AE2]
 Anti-UQCRC2 antibody [13G12AF12BB11]
 Bis N,N'-Methylene-Bis-Acrylamide
 Brilliant Blue G
 COX4 Monoclonal Antibody (1D6E1A8)
 Cytochrome c from equine heart
 Digitonin
 Fisherbrand FH100M Multichannel Peristaltic Pumps
 Imidazole
 Inner Glass Plates. Pkg of 2, 20 x 20 cm, glass plates for 20 cm PROTEAN II xi and PROTEAN II XL electrophoresis cell
 Model 485 Gradient Former. 40-175 ml acrylamide gradient former, includes valve stem and tubing kit
 NDUF9 Monoclonal Antibody (20C11B11B11)
 Nitrotetrazolium Blue chloride
 Outer Glass Plates. Pkg of 2, 22.3 x 20 cm, glass plates for 20 cm PROTEAN II xi and PROTEAN II XL electrophoresis cell
 Phenylmethanesulfonyl fluoride
 Powerpack 1000
 PROTEAN II Sandwich Clamps. Pkg of 2, clamps for running gels, for 20 cm PROTEAN II xi electrophoresis cell
 PROTEAN II xi Cell. Large format vertical electrophoresis cell, 16 x 20 cm gel size, 4 gel capacity, spacers
 PROTEAN II xi Comb. Pkg of 1, 15-well, 1.5 mm, comb for PROTEAN II xi electrophoresis cell
 PROTEAN II xi Multi-Gel Casting Chamber. Multi-gel casting chamber, 20 x 20 cm gel size, for up to ten gels
 PROTEAN II xi Spacers. Pkg of 4, 1.5 mm, spacers for 20 cm PROTEAN II xi electrophoresis cell
 SCIENCEWARE Utility Bags (10 x 12") 4 mil, Bel-Art, Box of 100
 Thick Blot Paper. Pkg of 25 sheets, 15 x 20 cm, absorbent filter paper, for use with Trans-Blot cassette
 Trans-Blot Cell With Plate Electrodes and Super Cooling Coil. Transfer cell and cooling coil (#170-3912),

Company	Catalog Number	
Sigma	D5637	
sigma	A2504	
Sigma	A3553	
sigma	A3377	
Abcam	ab14730	Lot number GR3174539-12, RRID AB_301438
Abcam	ab14715	Lot number GR3235943-1, RRID AB_301433
Abcam	ab14745	Lot number GR304308-3, RRID AB_2213640
Biorad	1610201	
Sigma	27815	
Invitrogen	459600	Lot number TI2637158, RRID AB_2532240
sigma	C7752	
Sigma	D141	
Thermo Fisher	13-310-660	
Sigma	I0250	
Biorad	1651823	
Biorad	1654120	
Invitrogen	459100	Lot number TD2536591, RRID AB_2532223
Sigma	N6639	
Biorad	1651824	
Sigma	P7626	
Biorad	Serial Number 286BR 07171	
Biorad	1651902	
Biorad	1651811	
Biorad	1651873	
Biorad	1652025	
Biorad	1651849	
VWR	11215-388	
Biorad	1703956	
Biorad	1703939	



1 Alewife Center #200
Cambridge, MA 02140
tel. 617.945.9051
www.jove.com

ARTICLE AND VIDEO LICENSE AGREEMENT

Title of Article:

Hybrid clear/blue native electrophoresis for the separation and analysis of mitochondrial respiratory chain supercomplexes

Author(s):

Alexanne Cuillerier and Yan Burelle

Item 1 (check one box): The Author elects to have the Materials be made available (as described at

<http://www.jove.com/author>) via: ☒ Standard Access ☐ Open Access

Item 2 (check one box):



The Author is NOT a United States government employee.



The Author is a United States government employee and the Materials were prepared in the course of his or her duties as a United States government employee.



The Author is a United States government employee but the Materials were NOT prepared in the course of his or her duties as a United States government employee.

ARTICLE AND VIDEO LICENSE AGREEMENT

1. Defined Terms. As used in this Article and Video License Agreement, the following terms shall have the following meanings: “**Agreement**” means this Article and Video License Agreement; “**Article**” means the article specified on the last page of this Agreement, including any associated materials such as texts, figures, tables, artwork, abstracts, or summaries contained therein; “**Author**” means the author who is a signatory to this Agreement; “**Collective Work**” means a work, such as a periodical issue, anthology or encyclopedia, in which the Materials in their entirety in unmodified form, along with a number of other contributions, constituting separate and independent works in themselves, are assembled into a collective whole; “**CRC License**” means the Creative Commons Attribution-Non Commercial-No Derivs 3.0 Unported Agreement, the terms and conditions of which can be found at: <http://creativecommons.org/licenses/by-nc-nd/3.0/legalcode>; “**Derivative Work**” means a work based upon the Materials or upon the Materials and other pre-existing works, such as a translation, musical arrangement, dramatization, fictionalization, motion picture version, sound recording, art reproduction, abridgment, condensation, or any other form in which the Materials may be recast, transformed, or adapted; “**Institution**” means the institution, listed on the last page of this Agreement, by which the Author was employed at the time of the creation of the Materials; “**JoVE**” means MyJoVE Corporation, a Massachusetts corporation and the publisher of *The Journal of Visualized Experiments*; “**Materials**” means the Article and / or the Video; “**Parties**” means the Author and JoVE; “**Video**” means any video(s) made by the Author, alone or in conjunction with any other parties, or by JoVE or its affiliates or agents, individually or in collaboration with the Author or any other parties, incorporating all or any portion of the Article, and in which the Author may or may not appear.

2. Background. The Author, who is the author of the Article, in order to ensure the dissemination and protection of the Article, desires to have the JoVE publish the Article and create and transmit videos based on the Article. In furtherance of such goals, the Parties desire to memorialize in this Agreement the respective rights of each Party in and to the Article and the Video.

3. Grant of Rights in Article. In consideration of JoVE agreeing to publish the Article, the Author hereby grants to JoVE, subject to **Sections 4** and **7** below, the exclusive, royalty-free, perpetual (for the full term of copyright in the Article, including any extensions thereto) license (a) to publish, reproduce, distribute, display and store the Article in all forms, formats and media whether now known or hereafter developed (including without limitation in print, digital and electronic form) throughout the world, (b) to translate the Article into other languages, create adaptations, summaries or extracts of the Article or other Derivative Works (including, without limitation, the Video) or Collective Works based on all or any portion of the Article and exercise all of the rights set forth in (a) above in such translations, adaptations, summaries, extracts, Derivative Works or Collective Works and (c) to license others to do any or all of the above. The foregoing rights may be exercised in all media and formats, whether now known or hereafter devised, and include the right to make such modifications as are technically necessary to exercise the rights in other media and formats. If the “Open Access” box has been checked in **Item 1** above, JoVE and the Author hereby grant to the public all such rights in the Article as provided in, but subject to all limitations and requirements set forth in, the CRC License.

ARTICLE AND VIDEO LICENSE AGREEMENT

4. Retention of Rights in Article. Notwithstanding the exclusive license granted to JoVE in **Section 3** above, the Author shall, with respect to the Article, retain the non-exclusive right to use all or part of the Article for the non-commercial purpose of giving lectures, presentations or teaching classes, and to post a copy of the Article on the Institution's website or the Author's personal website, in each case provided that a link to the Article on the JoVE website is provided and notice of JoVE's copyright in the Article is included. All non-copyright intellectual property rights in and to the Article, such as patent rights, shall remain with the Author.

5. Grant of Rights in Video – Standard Access. This **Section 5** applies if the "Standard Access" box has been checked in **Item 1** above or if no box has been checked in **Item 1** above. In consideration of JoVE agreeing to produce, display or otherwise assist with the Video, the Author hereby acknowledges and agrees that, Subject to **Section 7** below, JoVE is and shall be the sole and exclusive owner of all rights of any nature, including, without limitation, all copyrights, in and to the Video. To the extent that, by law, the Author is deemed, now or at any time in the future, to have any rights of any nature in or to the Video, the Author hereby disclaims all such rights and transfers all such rights to JoVE.

6. Grant of Rights in Video – Open Access. This **Section 6** applies only if the "Open Access" box has been checked in **Item 1** above. In consideration of JoVE agreeing to produce, display or otherwise assist with the Video, the Author hereby grants to JoVE, subject to **Section 7** below, the exclusive, royalty-free, perpetual (for the full term of copyright in the Article, including any extensions thereto) license (a) to publish, reproduce, distribute, display and store the Video in all forms, formats and media whether now known or hereafter developed (including without limitation in print, digital and electronic form) throughout the world, (b) to translate the Video into other languages, create adaptations, summaries or extracts of the Video or other Derivative Works or Collective Works based on all or any portion of the Video and exercise all of the rights set forth in (a) above in such translations, adaptations, summaries, extracts, Derivative Works or Collective Works and (c) to license others to do any or all of the above. The foregoing rights may be exercised in all media and formats, whether now known or hereafter devised, and include the right to make such modifications as are technically necessary to exercise the rights in other media and formats. For any Video to which this Section 6 is applicable, JoVE and the Author hereby grant to the public all such rights in the Video as provided in, but subject to all limitations and requirements set forth in, the CRC License.

7. Government Employees. If the Author is a United States government employee and the Article was prepared in the course of his or her duties as a United States government employee, as indicated in **Item 2** above, and any of the licenses or grants granted by the Author hereunder exceed the scope of the 17 U.S.C. 403, then the rights granted hereunder shall be limited to the maximum rights permitted under such

statute. In such case, all provisions contained herein that are not in conflict with such statute shall remain in full force and effect, and all provisions contained herein that do so conflict shall be deemed to be amended so as to provide to JoVE the maximum rights permissible within such statute.

8. Likeness, Privacy, Personality. The Author hereby grants JoVE the right to use the Author's name, voice, likeness, picture, photograph, image, biography and performance in any way, commercial or otherwise, in connection with the Materials and the sale, promotion and distribution thereof. The Author hereby waives any and all rights he or she may have, relating to his or her appearance in the Video or otherwise relating to the Materials, under all applicable privacy, likeness, personality or similar laws.

9. Author Warranties. The Author represents and warrants that the Article is original, that it has not been published, that the copyright interest is owned by the Author (or, if more than one author is listed at the beginning of this Agreement, by such authors collectively) and has not been assigned, licensed, or otherwise transferred to any other party. The Author represents and warrants that the author(s) listed at the top of this Agreement are the only authors of the Materials. If more than one author is listed at the top of this Agreement and if any such author has not entered into a separate Article and Video License Agreement with JoVE relating to the Materials, the Author represents and warrants that the Author has been authorized by each of the other such authors to execute this Agreement on his or her behalf and to bind him or her with respect to the terms of this Agreement as if each of them had been a party hereto as an Author. The Author warrants that the use, reproduction, distribution, public or private performance or display, and/or modification of all or any portion of the Materials does not and will not violate, infringe and/or misappropriate the patent, trademark, intellectual property or other rights of any third party. The Author represents and warrants that it has and will continue to comply with all government, institutional and other regulations, including, without limitation all institutional, laboratory, hospital, ethical, human and animal treatment, privacy, and all other rules, regulations, laws, procedures or guidelines, applicable to the Materials, and that all research involving human and animal subjects has been approved by the Author's relevant institutional review board.

10. JoVE Discretion. If the Author requests the assistance of JoVE in producing the Video in the Author's facility, the Author shall ensure that the presence of JoVE employees, agents or independent contractors is in accordance with the relevant regulations of the Author's institution. If more than one author is listed at the beginning of this Agreement, JoVE may, in its sole discretion, elect not take any action with respect to the Article until such time as it has received complete, executed Article and Video License Agreements from each such author. JoVE reserves the right, in its absolute and sole discretion and without giving any reason therefore, to accept or decline any work submitted to JoVE. JoVE and its employees, agents and independent contractors shall have

ARTICLE AND VIDEO LICENSE AGREEMENT

full, unfettered access to the facilities of the Author or of the Author's institution as necessary to make the Video, whether actually published or not. JoVE has sole discretion as to the method of making and publishing the Materials, including, without limitation, to all decisions regarding editing, lighting, filming, timing of publication, if any, length, quality, content and the like.

11. **Indemnification.** The Author agrees to indemnify JoVE and/or its successors and assigns from and against any and all claims, costs, and expenses, including attorney's fees, arising out of any breach of any warranty or other representations contained herein. The Author further agrees to indemnify and hold harmless JoVE from and against any and all claims, costs, and expenses, including attorney's fees, resulting from the breach by the Author of any representation or warranty contained herein or from allegations or instances of violation of intellectual property rights, damage to the Author's or the Author's institution's facilities, fraud, libel, defamation, research, equipment, experiments, property damage, personal injury, violations of institutional, laboratory, hospital, ethical, human and animal treatment, privacy or other rules, regulations, laws, procedures or guidelines, liabilities and other losses or damages related in any way to the submission of work to JoVE, making of videos by JoVE, or publication in JoVE or elsewhere by JoVE. The Author shall be responsible for, and shall hold JoVE harmless from, damages caused by lack of sterilization, lack of cleanliness or by contamination due to the making of a video by JoVE its employees, agents or independent contractors. All sterilization, cleanliness or decontamination procedures shall be solely the responsibility of the Author and shall be undertaken at the Author's


expense. All indemnifications provided herein shall include JoVE's attorney's fees and costs related to said losses or damages. Such indemnification and holding harmless shall include such losses or damages incurred by, or in connection with, acts or omissions of JoVE, its employees, agents or independent contractors.

12. **Fees.** To cover the cost incurred for publication, JoVE must receive payment before production and publication the Materials. Payment is due in 21 days of invoice. Should the Materials not be published due to an editorial or production decision, these funds will be returned to the Author. Withdrawal by the Author of any submitted Materials after final peer review approval will result in a US\$1,200 fee to cover pre-production expenses incurred by JoVE. If payment is not received by the completion of filming, production and publication of the Materials will be suspended until payment is received.

13. **Transfer, Governing Law.** This Agreement may be assigned by JoVE and shall inure to the benefits of any of JoVE's successors and assignees. This Agreement shall be governed and construed by the internal laws of the Commonwealth of Massachusetts without giving effect to any conflict of law provision thereunder. This Agreement may be executed in counterparts, each of which shall be deemed an original, but all of which together shall be deemed to be one and the same agreement. A signed copy of this Agreement delivered by facsimile, e-mail or other means of electronic transmission shall be deemed to have the same legal effect as delivery of an original signed copy of this Agreement.

A signed copy of this document must be sent with all new submissions. Only one Agreement required per submission.

CORRESPONDING AUTHOR:

Name:	Yan Burelle		
Department:	Faculty of Health Sciences		
Institution:	University of Ottawa		
Article Title:	Hybrid clear/blue native electrophoresis for the separation and analysis of mitochondrial respiratory chain supercomplexes		
Signature:		Date:	10-25-2018

Please submit a signed and dated copy of this license by one of the following three methods:

- 1) Upload a scanned copy of the document as a pdf on the JoVE submission site;
- 2) Fax the document to +1.866.381.2236;
- 3) Mail the document to JoVE / Attn: JoVE Editorial / 1 Alewife Center #200 / Cambridge, MA 02139

For questions, please email submissions@jove.com or call +1.617.945.9051

Tables: Please remove embedded tables from the manuscript and include in your revised submission as separate .xls/.xlsx formatted spreadsheets.

A separate xls file is now provided

Figure 3: The legend states CN-PAGE results are here, but this does not appear to be the case.

3. Figure 4: Please label the panels (A, B, C). Also, what are the error bars?

Answer: Panels are now labeled and error bars are explained in the figure legend

4. Figure 5 (former Figure 4) has not changed (so, please include a space between numbers and their units (i.e., 16,000 x g, 20,400 x g, 4 °C, 150 V, 200 V) and please change 1h30 to 1.5 h); also, it is cited first in the manuscript.

Answer: changes have been made accordingly