

Journal of Visualized Experiments

Swimming induced paralysis is a valuable behavioral assay to assess dopamine signaling in *Caenorhabditis elegans*

--Manuscript Draft--

Article Type:	Invited Methods Article - JoVE Produced Video
Manuscript Number:	JoVE59243R1
Full Title:	Swimming induced paralysis is a valuable behavioral assay to assess dopamine signaling in <i>Caenorhabditis elegans</i>
Keywords:	C. elegans, behavior, dopamine signaling, dopamine transporter, amphetamine, thrashing
Corresponding Author:	Lucia Carvelli
Corresponding Author's Institution:	
Corresponding Author E-Mail:	lcarvelli@fau.edu
Order of Authors:	Lucia Carvelli
	Sirisha Kudumala
	Serena Sossi
Additional Information:	
Question	Response
Please indicate whether this article will be Standard Access or Open Access.	Standard Access (US\$2,400)
Please indicate the city, state/province, and country where this article will be filmed . Please do not use abbreviations.	Jupiter,Florida, United States of America

TITLE:

Swimming Induced Paralysis to Assess Dopamine Signaling in *Caenorhabditis Elegans*

AUTHORS & AFFILIATIONS:

Sirisha Kudumala¹, Serena Sossi², Lucia Carvelli^{1,3,4}

¹Harriet Wilkes Honors College, Florida Atlantic University, John D MacArthur Campus, Jupiter FL, USA

²Integrative Biology and Neuroscience program, College of Science, Florida Atlantic University, FL, USA

³Brain Institute, Florida Atlantic University, FL, USA

⁴Department of Biomedical Science, Charles E. Schmidt College of Medicine Florida Atlantic University, Boca Raton FL, USA

Corresponding Author:

Lucia Carvelli

lcarvelli@fau.edu

Email addresses of co-authors:

Sirisha Kudumala: smadem@fau.edu

Serena Sossi: ssossi2017@fau.edu

KEYWORDS:

C. elegans, behavior, dopamine signaling, dopamine transporter, amphetamine, thrashing

SUMMARY:

Swimming induced paralysis (SWIP) is a well-established behavioral assay used to study the underlying mechanisms of dopamine signaling in *Caenorhabditis elegans* (*C. elegans*). However, a detailed method to perform the assay is lacking. Here, we describe a step-by-step protocol for SWIP.

ABSTRACT:

The swimming assay described in this protocol is a valid tool to identify proteins regulating the dopaminergic synapses. Similar to mammals, dopamine (DA) controls several functions in *C. elegans* including learning and motor activity. Conditions that stimulate DA release (e.g., amphetamine (AMPH) treatments) or that prevent DA clearance (e.g., animals lacking the DA transporter (*dat-1*) which are incapable of reaccumulating DA into the neurons) generate an excess of extracellular DA ultimately resulting in inhibited locomotion. This behavior is particularly evident when animals swim in water. In fact, while wild-type animals continue to swim for an extended period, *dat-1* null mutants and wild-type treated with AMPH or inhibitors of the DA transporter sink to the bottom of the well and do not move. This behavior is termed "Swimming Induced Paralysis" (SWIP). Although the SWIP assay is well established, a detailed description of the method is lacking. Here, we describe a step-by-step guide to perform SWIP. To perform the assay, late larval stage-4 animals are placed in a glass spot plate containing control

sucrose solution with or without AMPH. Animals are scored for their swimming behavior either manually by visualization under a stereoscope or automatically by recording with a camera mounted on the stereoscope. Videos are then analyzed using a tracking software, which yields a visual representation of thrashing frequency and paralysis in the form of heat maps. Both the manual and automated systems guarantee an easily quantifiable readout of the animals' swimming ability and thus facilitate screening for animals bearing mutations within the dopaminergic system or for auxiliary genes. In addition, SWIP can be used to elucidate the mechanism of action of drugs of abuse such as AMPH.

INTRODUCTION:

Animals perform a variety of innate and complex behaviors that are mediated by different neurotransmitters coordinated by intricate signaling processes. The neurotransmitter dopamine (DA) mediates highly conserved behaviors across species, including learning, motor function and reward processing.

The soil nematode *C. elegans*, with a relatively simple and well mapped nervous system consisting of only 302 neurons, shows markedly complex behaviors, including many that are regulated by DA such as mating, learning, foraging, locomotion and egg laying¹. Among other features, short life cycle, ease of handling and the conservation of signaling molecules, highlight the advantages of using *C. elegans* as a model for studying the neural basis of conserved behaviors.

The hermaphrodite *C. elegans* contains eight dopaminergic neurons; In addition to these, the male contains six extra pairs for mating purposes. As in mammals, these neurons synthesize DA and express the DA transporter (DAT-1), a membrane protein found exclusively in dopaminergic neurons, which transports DA released in the synaptic cleft back into the dopaminergic neurons. Moreover, most of the proteins involved in each step of synthesis, packaging and release of DA are highly conserved between worms and humans and, like in mammals, DA modulates feeding behaviors and locomotion in *C. elegans*².

C. elegans crawls on solid surfaces and swims with a characteristic thrashing behavior in water. Interestingly, mutants lacking expression of DAT-1 (*dat-1*) crawl normally on solid surface but fail to sustain swimming when immersed in water. This behavior was termed swimming induced paralysis, or SWIP. Previous experiments demonstrated that SWIP, in part, is caused by an excess of DA in the synaptic cleft that ultimately overstimulates the D2-like postsynaptic receptors (DOP-3). Although originally identified in *dat-1* knockout animals³, SWIP is also observed in wild-type animals treated with drugs that block the activity of DAT (e.g., imipramine⁴) and/or induce DA release (e.g., amphetamine⁵). On the other hand, pharmacological or genetic manipulations averting synthesis and release of DA and blocking DOP-3 receptor function prevent SWIP⁶. Taken together, these already published data have established SWIP as a reliable tool to study the behavioral effects caused by mutated proteins within dopaminergic synapses^{3,4,7} and to be employed for forward genetic screens for the identification of novel regulatory pathways involved in DA signaling⁷⁻¹². Additionally, by providing an easily quantifiable readout of drug-

induced behavior in living animals, SWIP enables the elucidation of mechanisms of action of drugs like amphetamine (AMPH) and azaperone at the dopaminergic synapses^{5,6,13–15}.

Protocols for performing the SWIP assays have been described before¹⁶. Here, we describe in detail the methodology and setup to perform the assay with the goal of providing a visual guide for the *C. elegans* community to effectively perform SWIP.

PROTOCOL

1. Preparation of solutions and media

1.1. Prepare M9 buffer by dissolving KH_2PO_4 3.0 g (22.05 mM), Na_2HPO_4 6.0 g (42.2 mM), and NaCl 5.0 g (85.5 mM) in 1 L of autoclaved deionized water. Add 1.0 mL of 1 M MgSO_4 (12 g in a final volume of 100 mL autoclaved deionized water) after autoclaving. Mix 100 mL of the resulting 10X M9 with 900 mL of autoclaved deionized water to make a 1x solution.

1.2. To make egg buffer, dissolve 6.896 g of NaCl (118 mM), 3.578 g of KCl (48 mM), 0.294 g of $\text{CaCl}_2 \cdot 2\text{H}_2\text{O}$ (2 mM), 0.406 g of $\text{MgCl}_2 \cdot 6\text{H}_2\text{O}$ (2 mM) and 5.958 g (25 mM) of HEPES in 1 L of autoclaved deionized water. Adjust pH to 7.3 using NaOH.

1.3. Prepare fresh sodium hypochlorite/NaOH solution by adding 1 mL of 5-6% sodium hypochlorite (bleach) and 180 μL of 10 N NaOH to 3.8 mL of deionized water.

1.4. Weigh 60 g sucrose and dissolve in autoclaved deionized water to a final volume of 100 mL to make 60% sucrose solution.

1.5. Dissolve 0.684 g of sucrose in 10 mL of autoclaved deionized water to make 200 mM sucrose. Check and adjust to the same an osmolarity using osmometer. Make 1 mL aliquots in 1.5 mL microcentrifuge tubes and freeze at -20°C .

1.6. Weigh 0.184 g of AMPH (molecular weight 184.75 g/mol) and dissolve in 10 mL of deionized water to make a 100 mM stock solution. Mix 2 μL of the stock solution in 400 μL of water to make 0.5 mM working solution.

1.7. Prepare Nutrient growth media (NGM) plates

1.7.1. Mix 3 g of NaCl (52.65 mM), 20 g of peptone, 25 g of bacto-agar and 975 mL of deionized water in a 2 L Erlenmeyer flask. Include a magnetic stir bar and autoclave (121°C , 15 PSI) for 1 hour using liquid cycle.

1.7.2. Cool to and maintain the temperature at about 50°C by placing the flask on a heater while stirring. Add 0.5 mL of cholesterol (5 mg/mL in ethanol), 1 mL of 1 M MgSO_4 , 1 mL of 1 M CaCl_2 and 25 mL of 1 M potassium phosphate buffer, pH 7.4 (108.3 g of KH_2PO_4 , 35.6 g of K_2HPO_4 , deionized water to 1 L).

1.7.3. Pipette 25 mL each into 100 mm x 15 mm Petri plates and allow the media to solidify. Store the plates upside down at 4 °C in a box for up to 4 weeks.

1.8. Preparation of Lysogeny broth (LB) broth

1.8.1. Dissolve 5 g of LB powder mix in 200 mL of deionized water in an Erlenmeyer flask. Autoclave for 30 minutes utilizing the liquid sterilization cycle. Allow the broth to cool down. Store at room temperature for 1-2 weeks.

1.9. Preparation of NA22 bacterial plates

1.9.1. Use a sterile pipette tip or a sterile bacterial loop to streak an LB plate with a small volume of NA22 *E. coli* bacteria from glycerol stock and incubate the plate upside down in a 37 °C incubator overnight to grow isolated colonies. Pick and introduce a single colony into 200 mL of LB broth prepared in step 1.8 and let grow overnight at 37 °C on a shaking platform.

1.9.2. To seed the plates, dispense 200 µL of bacterial culture onto the NGM plates prepared earlier in step 1.7 and spread with a sterile glass hockey stick. Let the plates dry overnight or longer under a hood and store upside down in an airtight box at 4 °C.

1.10. To make the eyelash/platinum tool to pick worms, glue a thick eyelash or a platinum filament into a glass Pasteur pipette using super glue. Cut the tip of the eyelash at an angle using a razor blade. Alternatively, a Bunsen burner can be used to melt the tip of the glass pipette around the platinum filament.

2. *C. elegans* husbandry

NOTE: Culture wild-type *N2 C. elegans* strain on *Escherichia coli* NA22 plates. The detailed culture methods are described below.

2.1. Preparation of worm culture

2.1.1. To make a starter culture of worms, cut a small piece of agar from a plate containing well-fed animals and transfer it onto a NA22 *E. coli* bacteria plate prepared in step 1.9 using a sterile spatula. Incubate plates at 20 °C for 3-4 days. Under a stereo microscope, visually confirm the presence of gravid adults.

2.2. Preparation of synchronized population of worms

2.2.1. Collect gravid adults from at least 2 plates by dispensing autoclaved deionized water all around the plate using a squirt bottle. Gently swirl the plate to dislodge the worms and collect the worms into a 15 mL polystyrene conical tube using a disposable plastic pipette.

2.2.2. Spin down the tube in a centrifuge at 140 x *g* for 2 minutes to pellet the worms, then aspirate off supernatant using a vacuum pump or with built in laboratory vacuum.

2.2.3. Resuspend and wash the worms by filling the tube with autoclaved deionized water and mix and centrifuge at 140 x *g* for 2 minutes. Aspirate the supernatant and repeat this last step two more times or until worms are clear from bacteria (water appears clear when mixed with the worms).

2.2.4. Add 5 mL of freshly made sodium hypochlorite/NaOH solution (step 1.3) to the worm pellet and rapidly mix using a vortex. Incubate the tube on a rocker for about 4-8 minutes. The time of incubation with sodium hypochlorite/NaOH solution fluctuates between 4-8 minutes based on the quality of the stock sodium hypochlorite solution (bleach).

2.2.5. Put a drop (2-50 μ L) of solution containing worms on a glass microscope slide and check every 2 minutes under the microscope for worm lysis. When about 70% of the worms are lysed and eggs are released, fill the tube with egg buffer prepared in step 1.2 and immediately centrifuge for 1 min at 140 x *g* to pellet the embryos and worm carcasses.

2.2.6. Aspirate the supernatant and wash the pellet 3 more times by filling the tube each time with egg buffer. Spin down at 140 x *g* for 1 minute and remove the supernatant each time. The pellet turns white at the end of washes.

2.2.7. After the final wash, separate the embryos from the dead carcasses in 30% sucrose solution. Add 5 mL of autoclaved deionized water to the pellet, resuspend and add 5 mL of 60% sucrose prepared in step 1.4. Mix thoroughly and centrifuge at 160 x *g* for 6 minutes.

2.2.8. Use a glass Pasteur pipette to transfer the embryos floating at the upper meniscus into a fresh 15 mL conical tube. Do not take more than 3-4 mL. To remove any remaining sucrose, wash the embryos 3 times with autoclaved water by centrifuging at 140 x *g* for 3 minutes, removing the supernatant and resuspending the pellet (and filling the tube) each time.

2.2.9. Repeat the washes with 1x M9 buffer. After the final wash, resuspend the pellet in 10 mL of M9. Leave the tubes on a shaker overnight (no more than 14 hours) for the eggs to hatch into L1 larvae. Worms will remain in L1 larval stage due to lack of food.

2.2.10. Wash the L1 larvae 3 times with autoclaved water to remove any pheromones released by the larvae by centrifuging at 140 x *g* for 2 minutes. Resuspend the larvae in 1 mL of water. Make a 1:10 dilution of the worms in water, pipette a 10 μ L drop on a glass slide, put a coverslip on and count the number of worms under a stereoscope. Repeat this twice and average the results.

2.2.11. Pipette the volume of worms that corresponds to about 1,000 worms onto an NA22 plate (that was previously brought to room temperature) by placing small drops on the plate. Leave the plate half-open until the drop dries out. Then cover the plate and incubate upside down in

20 °C incubator for about 44-48 h or until the worms reach late L4 stage, as confirmed visually under a stereomicroscope. Now the worms are ready to be tested for SWIP.

3. SWIP

NOTE: We describe the manual method of assessing SWIP in wild-type worms treated with AMPH. We also briefly discuss the tracking of worms and further analysis of worm kinetics using an automated worm tracker and a tracking software which were previously described by Hardaway et al.¹⁰.

3.1. Manual method to test for SWIP

3.1.1. Aliquot 40 µL of 200 mOsm/L sucrose solution either with or without 0.5 mM AMPH into a glass spot plate. Under the stereoscope, pick 8-10 late-L4 stage worms with an eyelash or platinum pick and submerge the pick in the plate containing the solution until worms move off the pick and swim into the solution. Note the number of worms picked into the well, start the timer, observe and record the number of worms exhibiting SWIP at each minute mark.

3.1.2. Copy the raw data into a spreadsheet and calculate the percent of worms paralyzed by dividing the number of worms paralyzed at each minute by total number of worms tested throughout the assay and multiply by 100. Copy the percent values into any graphing and statistical software and plot the data with percent values on the Y axis and time on X axis using the XY graph format.

3.1.3. Perform two-way ANOVA followed by post-hoc analysis (e.g., Bonferroni post-test) to test for statistical significance among control, AMPH groups and time of treatment.

3.2. Automated analysis of SWIP

3.2.1. Perform automated analysis on a single worm at a time. The protocol to set up camera, the worm tracker software and script to run the tracking software analysis are described in detail in Hardaway et al.¹⁶.

3.2.2. Briefly, place a single late L4 stage hermaphrodite into a glass spot plate utilizing an eyelash pick, as described in the manual method in section 3.1.2. Record swimming videos of one worm at the time and use the worm tracker software to calculate the frequency of body bends. Follow the script provided with the tracking software to obtain worm thrashing frequency and to generate heat maps from the worm thrashing data.

REPRESENTATIVE RESULTS

We present an example of SWIP assay induced by AMPH treatment. **Figure 1** shows a schematic representation of the assay setup as described above. For the manual assay, about 8-10 age synchronized late L4 stage worms are collected with an eyelash or platinum pick and placed

into a glass spot plate filled with 40 μ L of 200 mOsm/L sucrose (control solution) or sucrose with 0.5 mM AMPH and tested for SWIP.

When animals stop swimming (i.e., exhibit SWIP), they quickly sink to the bottom of the well and do not move. Therefore, the discrimination between animals that still swim on the surface of the water versus the ones that are steady at the bottom of the well is very straightforward. Most of the worms tested in control solution swim continuously for at least 10 minutes, whereas under AMPH treatment, the number of animals exhibiting SWIP progressively increases. The maximal percentage of animals exhibiting SWIP is proportional to the concentration of AMPH used^{1,5,13}. When DAT-1 knockout (*dat-1*) worms are tested in control solution, 40-70% worms exhibit SWIP within 10 minutes^{4,13}. This result is comparable to the percentage of paralyzed animals measured in wild-type animals treated with 0.5 mM AMPH (**Figure 2**).

Worms exposed to either sucrose or sucrose containing AMPH do not show SWIP in the first minute of observation (**Figure 2**). However, while worms treated with sucrose continue to swim for 10 minutes, worms treated with AMPH start to exhibit SWIP after 2 minutes of treatment and after 10 minutes, $66 \pm 3\%$ animals show SWIP (**Figure 2**).

For the automated analysis, videos of worms under control or AMPH treatments are recorded one worm at a time using a video recording software. A computer tracking software is used to track worm thrashing and the resulting data are imported into and analyzed with the software suit. Samples of heat maps of animals exposed to control or AMPH, displaying actively moving animals in red and paralyzed worms in green, are shown in **Figure 3**.

FIGURE AND TABLE LEGENDS

Figure 1. Assay set up for SWIP. Gravid adult wild-type (N2) worms were lysed with sodium hypochlorite/NaOH treatment to release embryos. The embryos were allowed to hatch and develop into synchronized L1 larvae in M9 buffer for 14 hours on a shaker and then plated on an NGM plate seeded with NA22 bacteria. After 42-48 hours late L4 stage larvae were visually identified under the stereoscope and picked with an eyelash pick into a spot plate with or without amphetamine in control sucrose solution and scored for SWIP either manually or through automated analysis.

Figure 2. Amphetamine-induced SWIP using manual assay. Worms in sucrose or sucrose with 0.5 mM amphetamine (AMPH) were visually scored for SWIP behavior every minute using a stereoscope. The percent of animals exhibiting SWIP was calculated by dividing the number of paralyzed worms by the total number of worms assayed for each time point, and then multiplying the result by 100. The percent of worms exposed to AMPH (blue squares) showing SWIP increases overtime, while the untreated worms (red circles) continue to swim during the 10-minute window. N represents the number of animals tested in each group. Error bars indicate standard error of means (SEM). Statistical significance was assessed by performing two-way ANOVA with Bonferroni multiple comparison test ($p < 0.0001$).

Figure 3. Amphetamine-induced SWIP via automated analysis. Videos of worms in sucrose or sucrose with 0.5 mM AMPH were recorded using a camera mounted on a stereoscope. Swimming videos of individual worms were tracked with a tracking software and analyzed using tracking software suit. Heat maps were generated from the data where red areas show the worms that are actively moving, and green areas indicate paralyzed worms. Each experimental group is representative of 6 animals.

DISCUSSION:

Here, we describe a step-by-step protocol to perform a behavioral assay, SWIP, in *C. elegans*. This protocol is simple and straightforward with no major technical hurdles making this assay very user friendly. Nevertheless, there are some critical aspects that need to be considered in order to effectively perform the assay.

Care should be taken to ensure that the worms used for the assay are well fed, since dietary restriction affects SWIP¹⁷. Gentle handling of worms while picking as well as timed sodium hypochlorite/NaOH treatment during lysis are critical steps, as trauma during picking (more common when using a platinum pick) or extended exposure of embryos to sodium hypochlorite/NaOH solution can cause permanent damage to the worms¹⁸ and thus compromise their ability to swim.

Sterile techniques should be followed to avoid contamination. Contamination of the agar plates compromises the health of the animals and thus alters their ability to swim. Slight difference in the percentage of animals exhibiting SWIP can be observed using agar plates seeded with different strains of *E. coli* bacteria (NA22, OP50, etc.). In our protocol, we use NA22 to yield a large number of worms.

Glass-spot plates, used during the SWIP assay, are preferred to plastic plates because they can be thoroughly washed, autoclaved and re-used when different types of drugs are tested.

Another important factor to be considered in a SWIP assay is the osmolarity of the liquid media in which the animals are tested¹⁹. In our protocol, we use sucrose to bring the osmolarity of water up to 200 mOsm/L which was previously shown to be an optimal condition for the animals (Blakely RD. personal communication). Water with a controlled osmolarity is preferred because it eliminates possible differences in water quality over multiple assays performed in different days, weeks or months. Notably, *dat-1* and wild-type animals treated with AMPH do not exhibit SWIP if salty solutions (e.g., M9 solution) are used as control media.

The time required for most of the animals to exhibit SWIP can slightly change among different worm stages (L1-L4). For example, Masoudi et al. (2014) reported that after 5 minutes 80% of *dat-1* L1 animals still swim, thus only 20% of animals exhibit SWIP. On the other hand, only 50% of L4 *dat-1* animals still swim after 5 minutes²⁰. Therefore, it is important that animals tested for SWIP are assayed at the same age. We have optimized our assay using always late L4 staged animals. Late L4 larvae have the advantage of being easily recognizable among the other larval

stages because, at this stage, animals have reached their adult size and exhibit a characteristic thin line dividing the white spot in the center of their body that will later differentiate into a mature vulva. The time-span of the assay is also critical. For example, after 15 minutes 90% of L4 *dat-1* mutants exhibit SWIP but at later time (30 minutes), only 60% of them exhibit SWIP²⁰.

The automated SWIP assay eliminates human errors and improves high-throughput screening with respect to manual assays. However, tracking software programs are time consuming since they can only track a single worm at a time.

With respect to other *C. elegans* DA-dependent behaviors, SWIP is a less time-consuming type of assay. For instance, the basal slowing response² is not an immediate-type of assay. In fact, worms need to be chronically fed with the drugs, and this could result in penetrant and off-target effects. Thus, it might not be as effective to screen for drugs.

One of the major applications of SWIP is to screen for various drugs that target the dopaminergic pathway. In cases where the drugs are not water soluble (e.g., mazindol), proper dilutions should be performed to achieve concentrations where the carrier solution is not toxic to the worms. Moreover, if different concentrations of the same drug are used^{5,13,14}, dose-response curves can also be analyzed. For example, the rate of progression (slope of the curve of animals per minute, **Figure 2**) can be reported as function of the concentration and used to compare the effects of different drugs (e.g., AMPH vs cocaine).

When SWIP is used to investigate the mechanism of action of drugs at the dopaminergic synapses, attention should be paid if results are extended to other animals. For instance, imipramine, a specific inhibitor of the mammalian norepinephrine transporter (NET) has been used to induce DA-mediate SWIP in N2 animals⁴. *C. elegans* does not synthesize norepinephrine and consequently does not express NET. However, the *C. elegans* DA transporter shares homology with mammalian NET²¹. For this reason, drugs that are specific inhibitors of mammalian NET and have limited effects on mammalian DAT (e.g., imipramine) show high selectivity to *C. elegans* DAT. Thus, species selectivity might limit our ability to extrapolate findings from *C. elegans* to humans.

The most important factor to consider when designing SWIP assays is the inclusion of experiments proving that SWIP is mediated by the dopaminergic system. In fact, impaired swimming could be generated by factors other than genes related to the DA system (e.g., general defects in muscles contraction). To ensure that SWIP is indeed mediated by DA, protocols should include experiments performed with animals in which DA has been depleted. This can be achieved by either using knockout animals lacking expression of *cat-2*, the *C. elegans* homologue of the tyrosine hydroxylase, which is the rate-limiting enzyme for DA synthesis, or by pre-treating wild-type animals with reserpine, a drug that causes DA depletion from vesicles³. For instance, McDonald et al.³ showed that basal SWIP observed in *dat-1* mutants was recovered when these animals were pre-treated with reserpine. This result suggests that SWIP is DA-mediated. On the other hand, using *cat-2*, *dat-1* and mutants lacking expression of each of the dopaminergic receptors, Safratowich et al. (2014) demonstrated that the trace amine β -phenylethylamine

(β PEA) induces SWIP within 1 minute of treatment independently from DA but by direct activation of the ligand-gated ion channel LGC-55¹⁴. The authors showed that β PEA- and DA-induced SWIP are mechanistically different and they can be easily discriminated experimentally. In fact, while β PEA-induced SWIP is DA- and *dop-3*-independent, it reaches maximal values within 1 minute and rapidly decreases after 2 minutes¹⁴, DA-mediated SWIP is *cat-2* and *dop-3* dependent and is essentially zero after 1 minute (**Figure 2**). Thus, there is a large difference in the time required to reach maximal effects, and this allows to quickly discriminate between the two phenomena: 1) the fast β PEA-induced SWIP within 1 minute obtained by direct activation of the LGC-55 channels and 2) the slow DA-mediated SWIP which occurs when a surplus of extracellular DA builds up over time (10-15 minutes) and the DA receptors DOP-3 are overstimulated³.

In conclusion, with the right set of experiments, which include the use of knockout animals for key player genes of the dopaminergic system (*cat-2*, *dat-1*, *dop-3*) and the use of drugs depleting DA storages (reserpine), SWIP has been successfully used to elucidate the mechanism of action of drugs like AMPH^{5,13}, β PEA^{14,15} and azaperone⁶.

ACKNOWLEDGEMENTS:

The authors would like to thank Dr. Osama Refai from Dr. Randy Blakely's lab for guidance with the automated analysis of SWIP. This work was supported by funding from NIH R01 DA042156 to LC.

DISCLOSURES:

The authors have nothing to disclose.

REFERENCES:

1. de Bono, M., Villu Maricq, A. Neuronal Substrates of Complex Behaviors in *C. elegans*. *Annual Review of Neuroscience*. **28** (1), 451–501, doi: 10.1146/annurev.neuro.27.070203.144259 (2005).
2. Sawin, E.R., Ranganathan, R., Horvitz, H.R. *C. elegans* Locomotory Rate Is Modulated by the Environment through a Dopaminergic Pathway and by Experience through a Serotonergic Pathway. *Neuron*. **26** (3), 619–631, doi: 10.1016/S0896-6273(00)81199-X (2000).
3. McDonald, P.W. et al. Vigorous Motor Activity in *Caenorhabditis elegans* Requires Efficient Clearance of Dopamine Mediated by Synaptic Localization of the Dopamine Transporter DAT-1. *Journal of Neuroscience*. **27** (51), 14216–14227, doi: 10.1523/JNEUROSCI.2992-07.2007 (2007).
4. Carvelli, L., Blakely, R.D., DeFelice, L.J. Dopamine Transporter/Syntaxin 1A Interactions Regulate Transporter Channel Activity and Dopaminergic Synaptic Transmission. *Proceedings of the National Academy of Sciences of the United States of America*. **105** (37), 14192–14199, doi: 10.2307/25464198 (2008).
5. Carvelli, L., Matthies, D.S., Galli, A. Molecular mechanisms of amphetamine actions in *Caenorhabditis elegans*. *Molecular Pharmacology*. **78** (1), 151–156, doi: 10.1124/mol.109.062703 (2010).
6. Refai, O., Blakely, R.D. Blockade and reversal of swimming-induced paralysis in *C.*

elegans by the antipsychotic and D2-type dopamine receptor antagonist azaperone. *Neurochemistry International*. **In Press**, doi: 10.1016/J.NEUINT.2018.05.013 (2018).

7. Bermingham, D.P. et al. The Atypical MAP Kinase SWIP-13/ERK8 Regulates Dopamine Transporters through a Rho-Dependent Mechanism. *The Journal of Neuroscience*. **37** (38), 9288–9304, doi: 10.1523/JNEUROSCI.1582-17.2017 (2017).

8. Nass, R. et al. A genetic screen in *Caenorhabditis elegans* for dopamine neuron insensitivity to 6-hydroxydopamine identifies dopamine transporter mutants impacting transporter biosynthesis and trafficking. *Journal of Neurochemistry*. **94** (3), 774–785, doi: 10.1111/j.1471-4159.2005.03205.x (2005).

9. Hardaway, J.A. et al. Forward genetic analysis to identify determinants of dopamine signaling in *Caenorhabditis elegans* using swimming-induced paralysis. *G3 (Bethesda, Md.)*. **2** (8), 961–75, doi: 10.1534/g3.112.003533 (2012).

10. Hardaway, J.A. et al. Glial Expression of the *Caenorhabditis elegans* Gene *swip-10* Supports Glutamate Dependent Control of Extrasynaptic Dopamine Signaling. *Journal of Neuroscience*. **35** (25), 9409–9423, doi: 10.1523/JNEUROSCI.0800-15.2015 (2015).

11. Felton, C.M., Johnson, C.M. Dopamine signaling in *C. elegans* is mediated in part by HLH-17-dependent regulation of extracellular dopamine levels. *G3 (Bethesda, Md.)*. **4** (6), 1081–9, doi: 10.1534/g3.114.010819 (2014).

12. Lanzo, A. et al. Silencing of Syntaxin 1A in the Dopaminergic Neurons Decreases the Activity of the Dopamine Transporter and Prevents Amphetamine-Induced Behaviors in *C. elegans*. *Frontiers in Physiology*. **9** (576), at <<https://www.frontiersin.org/article/10.3389/fphys.2018.00576/full>> (2018).

13. Safratowich, B.D., Lor, C., Bianchi, L., Carvelli, L. Amphetamine activates an amine-gated chloride channel to generate behavioral effects in *Caenorhabditis elegans*. *The Journal of Biological Chemistry*. **288** (30), 21630–7, doi: 10.1074/jbc.M113.484139 (2013).

14. Safratowich, B.D., Hossain, M., Bianchi, L., Carvelli, L. Amphetamine Potentiates the Effects of -Phenylethylamine through Activation of an Amine-Gated Chloride Channel. *Journal of Neuroscience*. **34** (13), 4686–4691, doi: 10.1523/JNEUROSCI.3100-13.2014 (2014).

15. Carvelli, L. Amphetamine activates / potentiates a ligand-gated ion channel. *Channels (Austin)*. **8** (4), 294–295 (2014).

16. Hardaway, J.A. et al. An open-source analytical platform for analysis of *C. elegans* swimming-induced paralysis. *Journal of Neuroscience Methods*. **232**, 58–62, doi: 10.1016/J.JNEUMETH.2014.04.024 (2014).

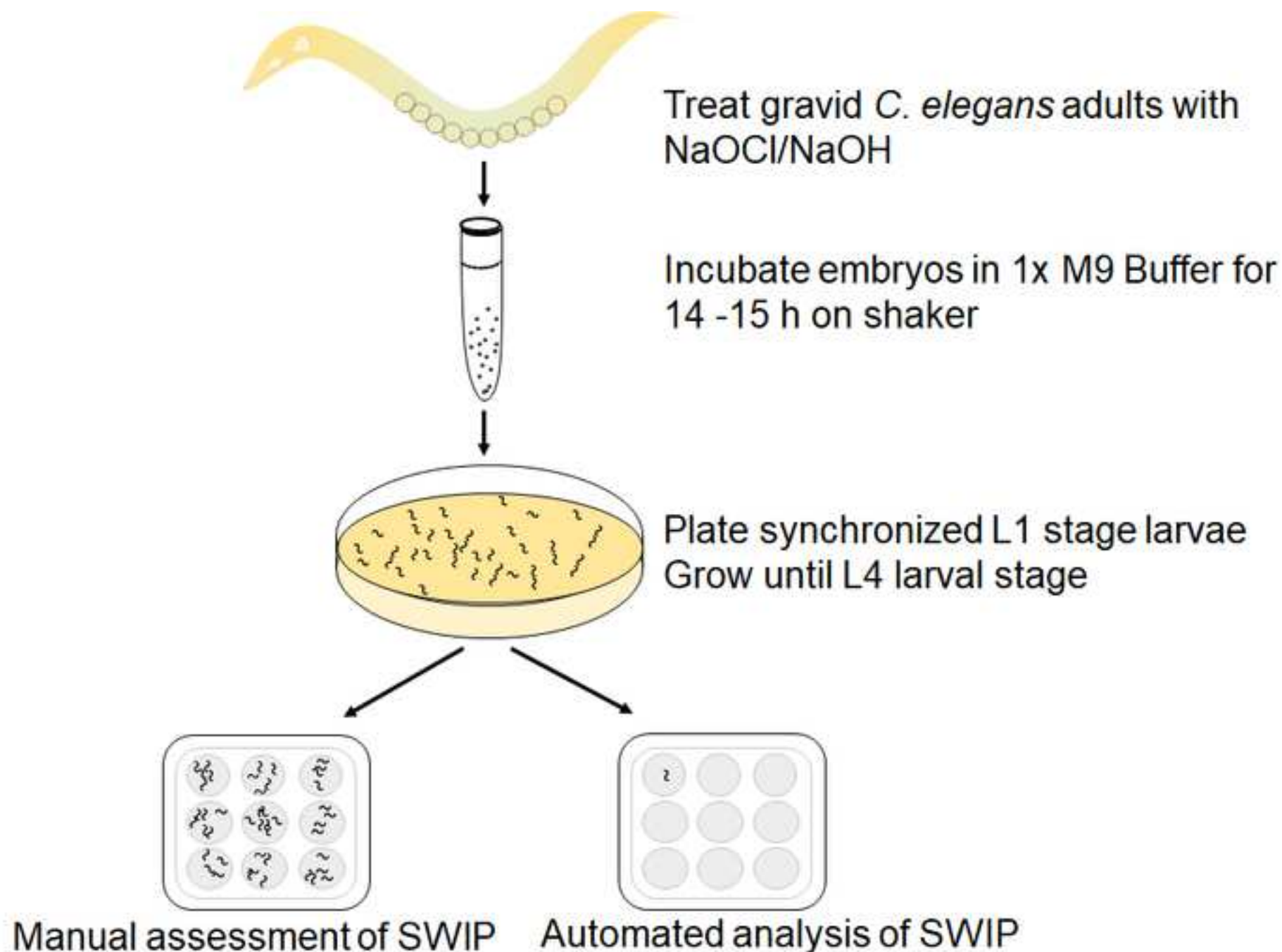
17. Lüersen, K., Faust, U., Gottschling, D.-C., Döring, F. Gait-specific adaptation of locomotor activity in response to dietary restriction in *Caenorhabditis elegans*. *The Journal of Experimental Biology*. **217** (Pt 14), 2480–8, doi: 10.1242/jeb.099382 (2014).

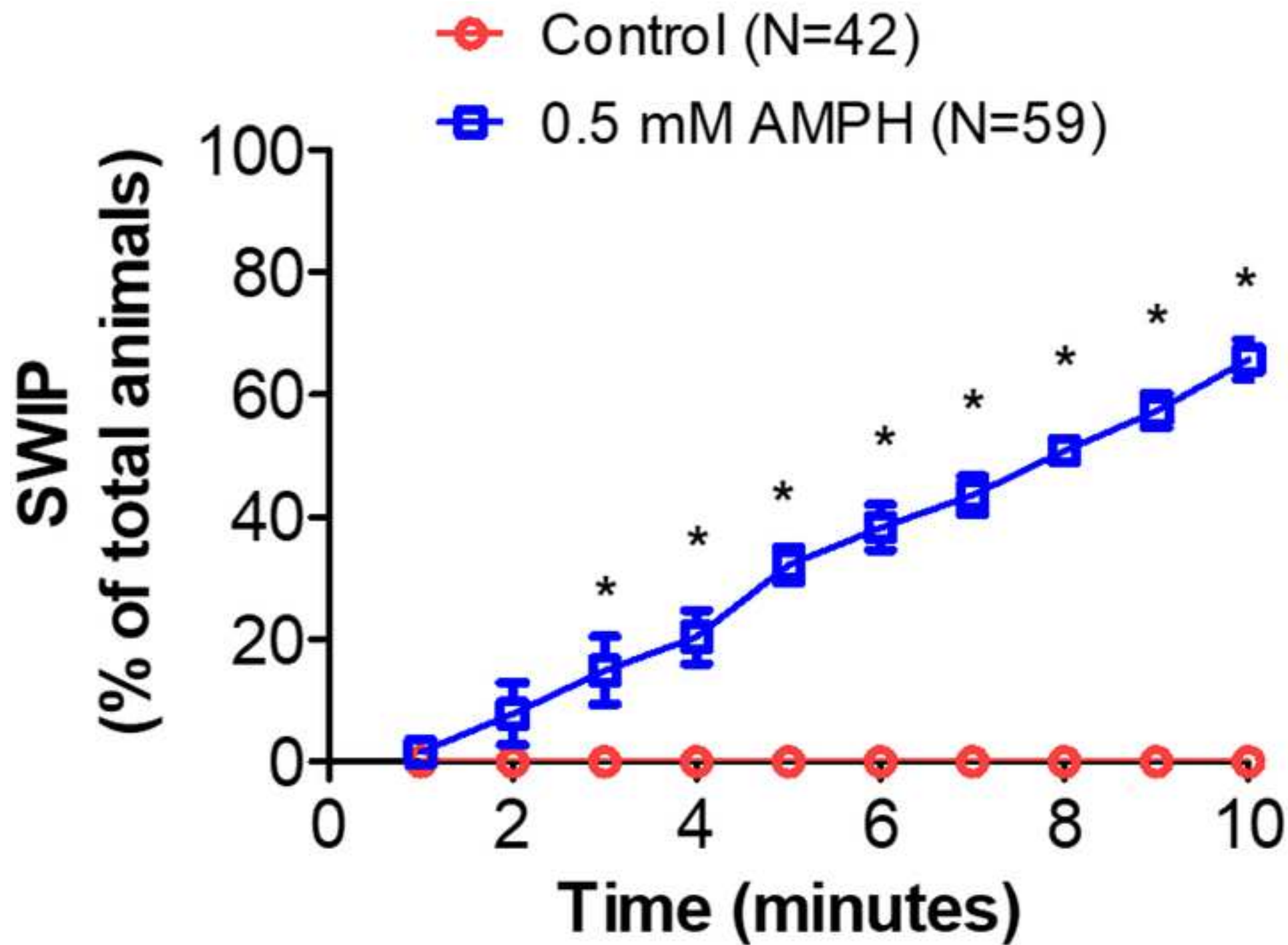
18. Porta-de-la-Riva, M., Fontrodona, L., Villanueva, A., Cerón, J. Basic *Caenorhabditis elegans* methods: synchronization and observation. *Journal of Visualized Experiments*. (64), e4019, doi: 10.3791/4019 (2012).

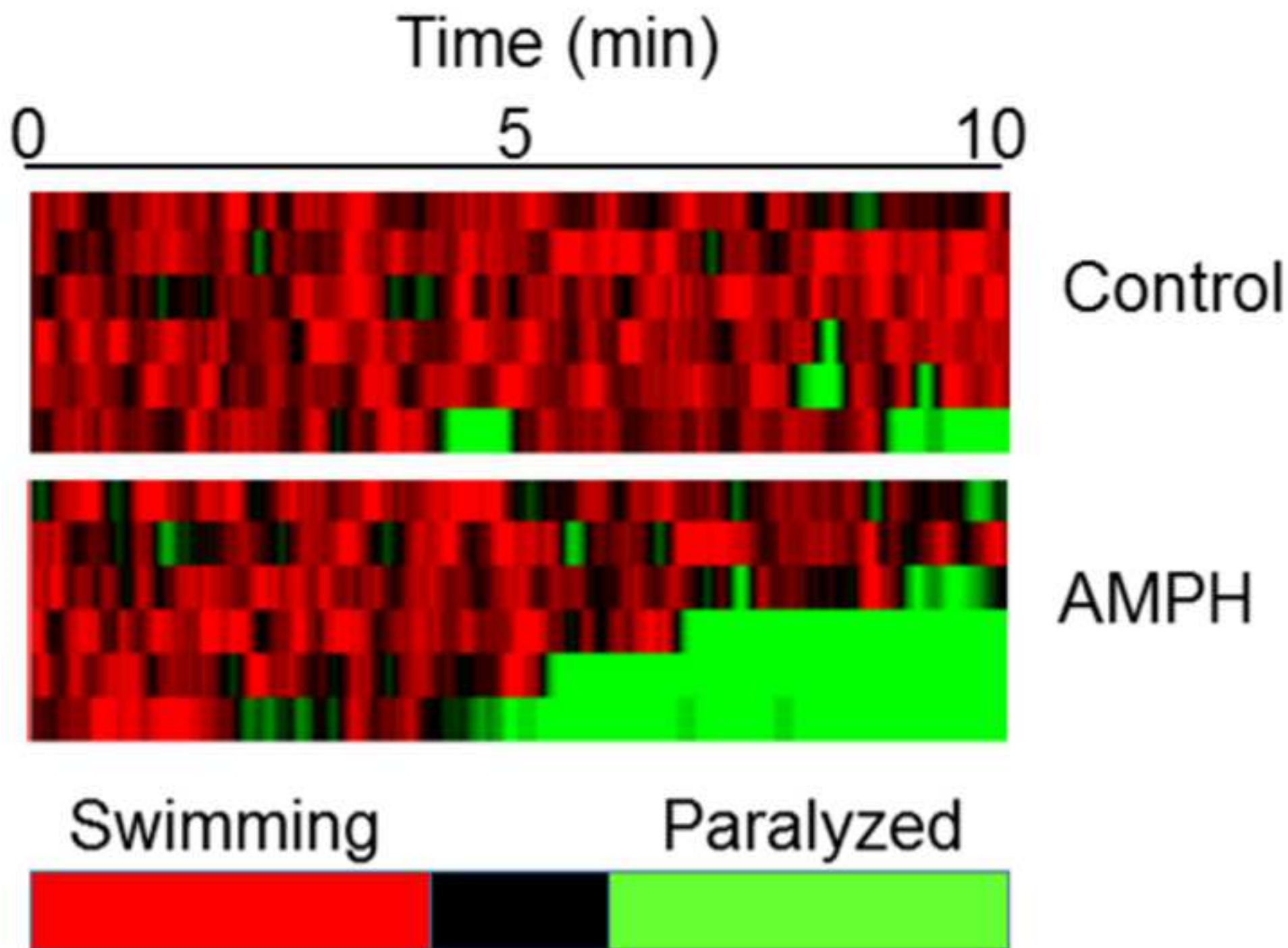
19. Lamitina, S.T., Morrison, R., Moeckel, G.W., Strange, K. Adaptation of the nematode *Caenorhabditis elegans* to extreme osmotic stress. *American Journal of Physiology-Cell Physiology*. **286** (4), C785–C791, doi: 10.1152/ajpcell.00381.2003 (2004).

20. Masoudi, N., Ibanez-Cruceyra, P., Offenburger, S.-L., Holmes, A., Gartner, A. Tetraspanin (TSP-17) Protects Dopaminergic Neurons against 6-OHDA-Induced Neurodegeneration in *C.*

483 elegans. *PLoS Genetics*. **10** (12), e1004767, doi: 10.1371/journal.pgen.1004767 (2014).
484 21. Jayanthi, L.D. et al. The *Caenorhabditis elegans* gene T23G5.5 encodes an
485 antidepressant- and cocaine-sensitive dopamine transporter. *Molecular Pharmacology*. **54** (4),
486 601–9, doi: 10.1124/mol.61.2.436 (1998).







Name of Material/ Equipment	Company	Catalog Number
Aluminum foil	Reynolds wrap	1091835
Amphetamine	Sigma	51-63-8
Autoclave		
Bacterial Incubator	New Brunswick scientific	M1352-0000
Bacteriological grade, Agar	Lab Scientific, Inc	A466
Bacto (TM) Peptone	BD	REF 211677
Calcium Chloride (dihydrate)	Sigma-Aldrich	C3881
Camera	Thorlabs	U-CMAD3
Centrifuge	Eppendorf 5810R 15amp	E215059
Cholesterol	Sigma-Aldrich	57-88-5
Deionised water	Millipore	Z00QSV0WW
Depression glass spot plate	Corning	Corning, Inc. 722085
Erlenmeyer flask	ThermoFisher	4103-0250PK
Eye lash		
Glass slide	Fisherbrand	12-550-15
Graphing and statistical software	Prism	
HEPES	Sigma-Aldrich	RB=H3375 & H7006
Hypochlorite	Hawkins	Sodium Hypochlorite 4-6%, USP" 1 gal
LB Broth, Miller	Fisher	BP1426
Magnesium Chloride (Hexahydrate)	Sigma-Aldrich	RB=M0250
Magnesium sulfate (heptahydrate)	Sigma-Aldrich	M1880
Magnetic stir bar	Fisherbrand	16-800-510
Microcentrifuge tubes	ThermoFisher	69715
NA 22 bacteria	CGC	
Nystatin	Sigma	1400-61-9
Osmometer	Advanced Instruments, Inc	Model 3320
Pasteur Pipettes	Fisherbrand	13-678-20A
Petriplates	Falcon	351007
pH Meter	Orion VersaStar Pro	IS-68X591202-B 0514
Polystyrene conical tubes	Falcon	352095
Potassium Chloride	Sigma-Aldrich	P9541
Potassium dihydrogen phosphate	Sigma-Aldrich	7778-77-0

Potassium Phosphate - DIBASIC
Potassium Phosphate - MONOBASIC
Serological pipettes
Shaker
Sodium Chloride
Sodium dihydrogen Phosphate
Spreadsheet
Stereo Microscope
Sterile Pipette tips
Sucrose
Superglue
SwimR software
Tracker 2
Video recording software

Sigma-Aldrich
Sigma-Aldrich
VWR
Reliable Scientific
Fisher
Fisher
MS office
Zeiss
Various
Sigma-Aldrich
Loctite
10.18129/B9.bioc.SwimR
Worm Tracker 2.0
Virtualdub

P-8281
P0662
10ml=89130-898
55S 12x16
RB=BP358-1
RB=S381

Model tlb3. 1 stemi2000
02-707-400
RB=S5016
1647358 .14 oz.

www.mrc-lmb.cam.ac.uk/wormtracker/
<http://www.virtualdub.org/>

Comments/Description

Milli-Q

Graphpad 5

500g

Microsoft Excel



1 Alewife Center #200
Cambridge, MA 02140
tel. 617.945.9051
www.jove.com

ARTICLE AND VIDEO LICENSE AGREEMENT

Title of Article:

SWIMMING INDUCED PARALYSIS: a valuable assay to assess dopamine signaling in *Caenorhabditis elegans*

Author(s):

Sirisha Kudumale, Serena Sossi, Lucia Corvelli

Item 1: The Author elects to have the Materials be made available (as described at <http://www.jove.com/publish>) via:



Standard Access



Open Access

Item 2: Please select one of the following items:



The Author is **NOT** a United States government employee.



The Author is a United States government employee and the Materials were prepared in the course of his or her duties as a United States government employee.



The Author is a United States government employee but the Materials were NOT prepared in the course of his or her duties as a United States government employee.

ARTICLE AND VIDEO LICENSE AGREEMENT

1. **Defined Terms.** As used in this Article and Video License Agreement, the following terms shall have the following meanings: “**Agreement**” means this Article and Video License Agreement; “**Article**” means the article specified on the last page of this Agreement, including any associated materials such as texts, figures, tables, artwork, abstracts, or summaries contained therein; “**Author**” means the author who is a signatory to this Agreement; “**Collective Work**” means a work, such as a periodical issue, anthology or encyclopedia, in which the Materials in their entirety in unmodified form, along with a number of other contributions, constituting separate and independent works in themselves, are assembled into a collective whole; “**CRC License**” means the Creative Commons Attribution-Non Commercial-No Derivs 3.0 Unported Agreement, the terms and conditions of which can be found at: <http://creativecommons.org/licenses/by-nc-nd/3.0/legalcode>; “**Derivative Work**” means a work based upon the Materials or upon the Materials and other pre-existing works, such as a translation, musical arrangement, dramatization, fictionalization, motion picture version, sound recording, art reproduction, abridgment, condensation, or any other form in which the Materials may be recast, transformed, or adapted; “**Institution**” means the institution, listed on the last page of this Agreement, by which the Author was employed at the time of the creation of the Materials; “**JoVE**” means MyJoVE Corporation, a Massachusetts corporation and the publisher of The Journal of Visualized Experiments; “**Materials**” means the Article and / or the Video; “**Parties**” means the Author and JoVE; “**Video**” means any video(s) made by the Author, alone or in conjunction with any other parties, or by JoVE or its affiliates or agents, individually or in collaboration with the Author or any other parties, incorporating all or any portion

of the Article, and in which the Author may or may not appear.

2. **Background.** The Author, who is the author of the Article, in order to ensure the dissemination and protection of the Article, desires to have the JoVE publish the Article and create and transmit videos based on the Article. In furtherance of such goals, the Parties desire to memorialize in this Agreement the respective rights of each Party in and to the Article and the Video.

3. **Grant of Rights in Article.** In consideration of JoVE agreeing to publish the Article, the Author hereby grants to JoVE, subject to **Sections 4** and **7** below, the exclusive, royalty-free, perpetual (for the full term of copyright in the Article, including any extensions thereto) license (a) to publish, reproduce, distribute, display and store the Article in all forms, formats and media whether now known or hereafter developed (including without limitation in print, digital and electronic form) throughout the world, (b) to translate the Article into other languages, create adaptations, summaries or extracts of the Article or other Derivative Works (including, without limitation, the Video) or Collective Works based on all or any portion of the Article and exercise all of the rights set forth in (a) above in such translations, adaptations, summaries, extracts, Derivative Works or Collective Works and (c) to license others to do any or all of the above. The foregoing rights may be exercised in all media and formats, whether now known or hereafter devised, and include the right to make such modifications as are technically necessary to exercise the rights in other media and formats. If the “Open Access” box has been checked in **Item 1** above, JoVE and the Author hereby grant to the public all such rights in the Article as provided in, but subject to all limitations and requirements set forth in, the CRC License.

ARTICLE AND VIDEO LICENSE AGREEMENT

4. **Retention of Rights in Article.** Notwithstanding the exclusive license granted to JoVE in **Section 3** above, the Author shall, with respect to the Article, retain the non-exclusive right to use all or part of the Article for the non-commercial purpose of giving lectures, presentations or teaching classes, and to post a copy of the Article on the Institution's website or the Author's personal website, in each case provided that a link to the Article on the JoVE website is provided and notice of JoVE's copyright in the Article is included. All non-copyright intellectual property rights in and to the Article, such as patent rights, shall remain with the Author.

5. **Grant of Rights in Video – Standard Access.** This **Section 5** applies if the "Standard Access" box has been checked in **Item 1** above or if no box has been checked in **Item 1** above. In consideration of JoVE agreeing to produce, display or otherwise assist with the Video, the Author hereby acknowledges and agrees that, Subject to **Section 7** below, JoVE is and shall be the sole and exclusive owner of all rights of any nature, including, without limitation, all copyrights, in and to the Video. To the extent that, by law, the Author is deemed, now or at any time in the future, to have any rights of any nature in or to the Video, the Author hereby disclaims all such rights and transfers all such rights to JoVE.

6. **Grant of Rights in Video – Open Access.** This **Section 6** applies only if the "Open Access" box has been checked in **Item 1** above. In consideration of JoVE agreeing to produce, display or otherwise assist with the Video, the Author hereby grants to JoVE, subject to **Section 7** below, the exclusive, royalty-free, perpetual (for the full term of copyright in the Article, including any extensions thereto) license (a) to publish, reproduce, distribute, display and store the Video in all forms, formats and media whether now known or hereafter developed (including without limitation in print, digital and electronic form) throughout the world, (b) to translate the Video into other languages, create adaptations, summaries or extracts of the Video or other Derivative Works or Collective Works based on all or any portion of the Video and exercise all of the rights set forth in (a) above in such translations, adaptations, summaries, extracts, Derivative Works or Collective Works and (c) to license others to do any or all of the above. The foregoing rights may be exercised in all media and formats, whether now known or hereafter devised, and include the right to make such modifications as are technically necessary to exercise the rights in other media and formats. For any Video to which this **Section 6** is applicable, JoVE and the Author hereby grant to the public all such rights in the Video as provided in, but subject to all limitations and requirements set forth in, the CRC License.

7. **Government Employees.** If the Author is a United States government employee and the Article was prepared in the course of his or her duties as a United States government employee, as indicated in **Item 2** above, and any of the licenses or grants granted by the Author hereunder exceed the scope of the 17 U.S.C. 403, then the rights granted hereunder shall be limited to the maximum

rights permitted under such statute. In such case, all provisions contained herein that are not in conflict with such statute shall remain in full force and effect, and all provisions contained herein that do so conflict shall be deemed to be amended so as to provide to JoVE the maximum rights permissible within such statute.

8. **Protection of the Work.** The Author(s) authorize JoVE to take steps in the Author(s) name and on their behalf if JoVE believes some third party could be infringing or might infringe the copyright of either the Author's Article and/or Video.

9. **Likeness, Privacy, Personality.** The Author hereby grants JoVE the right to use the Author's name, voice, likeness, picture, photograph, image, biography and performance in any way, commercial or otherwise, in connection with the Materials and the sale, promotion and distribution thereof. The Author hereby waives any and all rights he or she may have, relating to his or her appearance in the Video or otherwise relating to the Materials, under all applicable privacy, likeness, personality or similar laws.

10. **Author Warranties.** The Author represents and warrants that the Article is original, that it has not been published, that the copyright interest is owned by the Author (or, if more than one author is listed at the beginning of this Agreement, by such authors collectively) and has not been assigned, licensed, or otherwise transferred to any other party. The Author represents and warrants that the author(s) listed at the top of this Agreement are the only authors of the Materials. If more than one author is listed at the top of this Agreement and if any such author has not entered into a separate Article and Video License Agreement with JoVE relating to the Materials, the Author represents and warrants that the Author has been authorized by each of the other such authors to execute this Agreement on his or her behalf and to bind him or her with respect to the terms of this Agreement as if each of them had been a party hereto as an Author. The Author warrants that the use, reproduction, distribution, public or private performance or display, and/or modification of all or any portion of the Materials does not and will not violate, infringe and/or misappropriate the patent, trademark, intellectual property or other rights of any third party. The Author represents and warrants that it has and will continue to comply with all government, institutional and other regulations, including, without limitation all institutional, laboratory, hospital, ethical, human and animal treatment, privacy, and all other rules, regulations, laws, procedures or guidelines, applicable to the Materials, and that all research involving human and animal subjects has been approved by the Author's relevant institutional review board.

11. **JoVE Discretion.** If the Author requests the assistance of JoVE in producing the Video in the Author's facility, the Author shall ensure that the presence of JoVE employees, agents or independent contractors is in accordance with the relevant regulations of the Author's institution. If more than one author is listed at the beginning of this Agreement, JoVE may, in its sole

ARTICLE AND VIDEO LICENSE AGREEMENT

discretion, elect not take any action with respect to the Article until such time as it has received complete, executed Article and Video License Agreements from each such author. JoVE reserves the right, in its absolute and sole discretion and without giving any reason therefore, to accept or decline any work submitted to JoVE. JoVE and its employees, agents and independent contractors shall have full, unfettered access to the facilities of the Author or of the Author's institution as necessary to make the Video, whether actually published or not. JoVE has sole discretion as to the method of making and publishing the Materials, including, without limitation, to all decisions regarding editing, lighting, filming, timing of publication, if any, length, quality, content and the like.

12. **Indemnification.** The Author agrees to indemnify JoVE and/or its successors and assigns from and against any and all claims, costs, and expenses, including attorney's fees, arising out of any breach of any warranty or other representations contained herein. The Author further agrees to indemnify and hold harmless JoVE from and against any and all claims, costs, and expenses, including attorney's fees, resulting from the breach by the Author of any representation or warranty contained herein or from allegations or instances of violation of intellectual property rights, damage to the Author's or the Author's institution's facilities, fraud, libel, defamation, research, equipment, experiments, property damage, personal injury, violations of institutional, laboratory, hospital, ethical, human and animal treatment, privacy or other rules, regulations, laws, procedures or guidelines, liabilities and other losses or damages related in any way to the submission of work to JoVE, making of videos by JoVE, or publication in JoVE or elsewhere by JoVE. The Author shall be responsible for, and shall hold JoVE harmless from, damages caused by lack of sterilization, lack of cleanliness or by contamination due to

the making of a video by JoVE its employees, agents or independent contractors. All sterilization, cleanliness or decontamination procedures shall be solely the responsibility of the Author and shall be undertaken at the Author's expense. All indemnifications provided herein shall include JoVE's attorney's fees and costs related to said losses or damages. Such indemnification and holding harmless shall include such losses or damages incurred by, or in connection with, acts or omissions of JoVE, its employees, agents or independent contractors.

13. **Fees.** To cover the cost incurred for publication, JoVE must receive payment before production and publication of the Materials. Payment is due in 21 days of invoice. Should the Materials not be published due to an editorial or production decision, these funds will be returned to the Author. Withdrawal by the Author of any submitted Materials after final peer review approval will result in a US\$1,200 fee to cover pre-production expenses incurred by JoVE. If payment is not received by the completion of filming, production and publication of the Materials will be suspended until payment is received.

14. **Transfer, Governing Law.** This Agreement may be assigned by JoVE and shall inure to the benefits of any of JoVE's successors and assignees. This Agreement shall be governed and construed by the internal laws of the Commonwealth of Massachusetts without giving effect to any conflict of law provision thereunder. This Agreement may be executed in counterparts, each of which shall be deemed an original, but all of which together shall be deemed to me one and the same agreement. A signed copy of this Agreement delivered by facsimile, e-mail or other means of electronic transmission shall be deemed to have the same legal effect as delivery of an original signed copy of this Agreement.

A signed copy of this document must be sent with all new submissions. Only one Agreement is required per submission.

CORRESPONDING AUTHOR

Name:

LUCIA CARVELLI

Department:

BRAIN INSTITUTE

Institution:

FLORIDA ATLANTIC UNIVERSITY

Title:

ASSOCIATE PROFESSOR

Signature:

Lucia Carvelli

Date:

10/12/2018

Please submit a **signed** and **dated** copy of this license by one of the following three methods:

1. Upload an electronic version on the JoVE submission site
2. Fax the document to +1.866.381.2236
3. Mail the document to JoVE / Attn: JoVE Editorial / 1 Alewife Center #200 / Cambridge, MA 02140

Dear Editorial Board,

We are grateful for the editorial and reviewers' suggestions and comments. The revised manuscript, included in this resubmission, addresses all arguments raised by the reviewers. Thanks to the reviewers' work, our manuscript is improved and better suited for publication in JoVE. Below is a step-by-step response to the comments we received.

1. *Please take this opportunity to thoroughly proofread the manuscript to ensure that there are no spelling or grammar issues.*

We have corrected any spelling or grammar error.

2. *Please revise the title to avoid the use of colon.*

We have changed the title to Swimming induced paralysis is a valuable behavioral assay to assess dopamine signaling in *Caenorhabditis elegans*.

3. *Keywords: Please provide at least 6 keywords or phrases.*

Behavior and thrashing have been included in the keywords section

4. *Please rephrase the Long Abstract to more clearly state the goal of the protocol.*

See lines 34-35

5. *JoVE cannot publish manuscripts containing commercial language. ...6. Please revise the protocol text to avoid the use of any personal pronouns (e.g., "we", "you", "our" etc.). 7. Please revise the protocol to contain only action items that direct the reader to do something (e.g., "Do this," "Ensure that," etc.). The actions should be described in the imperative tense in complete sentences wherever possible. Avoid usage of phrases such as "could be," "should be," and "would be" throughout the Protocol. Any text that cannot be written in the imperative tense may be added as a "Note." Please include all safety procedures and use of hoods, etc. However, notes should be used sparingly and actions should be described in the imperative tense wherever possible. Please move the discussion about the protocol to the Discussion. 8. Please revise the Protocol steps (1.7, 1.9, 2.2.1, 2.2.2, 2.2.4, 2.2.5, 3.2.1, etc.) so that individual steps contain only 2-3 actions per step and a maximum of 4 sentences per step. Use sub-steps as necessary. 9. Please highlight more steps for filming. The currently highlighted content is not sufficient for the video. 10. Table of Materials: Please sort the items in alphabetical order according to the Name of Material/Equipment.*

Changes indicated from point 5 to 10 have been addressed throughout the manuscript

Reviewer #1:

Minor Concerns:

There were a few minor typographical errors in the text.

Errors have been corrected throughout the manuscript

Reviewer #2:

Minor Concerns:

Line 109 - shouldn't this be "to a final volume of 100ml", not "dissolved in 100ml".....

Corrected (see line 111)

Line 219: Two-way ANOVA should be "to test for effects of either time or drug", and post-hoc analyses should be included.

Corrected (see lines 235-236)

Reviewer #3:

Major

1-Pitfalls. ...how specific the effect is to dopamine, and could other phenomena also result in SWIP effect?

The reviewer is right, other phenomena could produce SWIP. The specificity of the dopaminergic signaling is ensured by the use of drugs known to act through dopaminergic proteins and mutants lacking expression of genes directly involved in the dopaminergic signaling. We thank the reviewer who suggested including this valuable information in the manuscript (see lines 374-400)

2-Quantification of the results. The results provided (Fig2) show a constant decrease in number of animals showing SWIP when measured every minute. These data do not provide enough information to assess the robustness of the method....

We agree with the reviewer that rate of progression per minute as a function of drug concentration and maximal number of affected animals at the steady state as a function of drug concentration are important parameters that can be collected from our assay and used to compare the efficiency among different drugs. We discuss these important aspects of our assay in the revised manuscript (Lines 359-362).

3-Expected results for C. elegans mutant. I can imagine that the idea of this method is to study gene products that would be involved in regulation of dopamine homeostasis. What is missing

are the possible outcomes of positive mutants. Please describe which could be the expected phenotypes for positive mutants. ...

We thank the reviewer who suggested discussing this valuable point (lines 374-400).

4-In the introduction, Imipramine is mentioned as a blocker of DAT-1, this is different than what happens in mammalian DAT in which the imipramine effect is weak. ...

In the revised version of the manuscript, we discuss this limitation (see lines 364-372).

Minor

Almost all solutions described in the protocol are described in grams, but the final molar composition of the solutes must be provided when appropriate.

We have included concentrations molar (see Protocol section).

Reviewer #4:

Major Concerns:

1) SWIP can only be reliably observed in L4 stage animals. Even though it is mentioned in the discussion part, it should be stressed more clearly in both introduction and protocol.

We thank the reviewer for this valuable suggestion. Accordingly, we have included more discussion on this argument in the revised version of the manuscript. In this new paragraph, we discuss the work of Masoudi et al. (2014) to inform the reader that SWIP can be observed in both L1 and L4 staged animals. But, the rate of paralysis between the 2 larval stages slightly changes. (see line 335-340)

2) A lot of drugs paralyze worms in liquid, among which are for example sodium azide, levamisole, aldicarb. However, these drugs are not specifically targeting the dopaminergic pathway. How can paralysis by other causes such as toxicity be distinguished from a paralysis based on specific effects onto the dopaminergic system, especially, if dat-1 mutants at L4 stage paralyze in water already without any drug? It is therefore important to include both negative and positive controls into the example assay, e.g. L4 dat-1 mutants and cat-2 mutants.

We agree with the reviewer both positive and negative controls need to be included during the assay to confirm dopamine as the only mediator of SWIP. We have discussed this important point in the revised version of the manuscript (see lines 374-400).

3) The introduction and abstract mention "liquid media" as basis for the assay. Liquid media is a vague terminology and can mean anything from water, to M9 buffer....

We have replaced liquid media with water throughout the manuscript and discussed that salty solutions prevent SWIP (see lines 332-333).

4) *Is the time span of the assay critical?*

The reviewer is correct. The time-span of the assay is critical. In the revised manuscript, we discuss this important point (see lines 335-345).

Minor Concerns:

1) *Can an alternative to the Pyrex spot well plate be used e.g. using hydrophobic pen circles on a cover slip? Any transparent container works.*

We chose to use glass Pyrex spot well plates because they can be thoroughly washed, autoclaved and re-used when different types of drugs are tested (see lines 324-325)

3) *Any type of statistical program can be used e.g Prism6 Graphpad.*

The reviewer is right, and we have corrected the manuscript accordingly (see lines 231-232).

4) *Why is a two-way ANOVA test used for the analysis if only one parameter is assessed (percentage of animals swimming) in 2 or more groups, shouldn't it be one-way ANOVA test instead?*

We agree with reviewer that when only one parameter is assessed in two or more groups 1-way ANOVA should be used to perform statistical analysis. However, for data containing 2 independent variables, time and treated/control animals (figure 2) or time and N2/mutant animals, the two-way ANOVA test needs to be used. We thank the reviewer for suggesting to clarify this point. (see lines 235-236).

5) *Figure 2: "percentage of animals exhibiting SWIP was calculated by dividing the number of paralyzed worms by total number of worms.." missing: and multiplied by 100.*

We have corrected the text (lines 231 and 292).