

Journal of Visualized Experiments

Assessing the Influence of Personality on Sensitivity to Magnetic Fields in Zebrafish

--Manuscript Draft--

Article Type:	Invited Methods Article - JoVE Produced Video
Manuscript Number:	JoVE59229R2
Full Title:	Assessing the Influence of Personality on Sensitivity to Magnetic Fields in Zebrafish
Keywords:	zebrafish; personality; fish behavior; orientation; magnetic field; rheotaxis
Corresponding Author:	Alessandro Cresci University of Miami Rosenstiel School of Marine and Atmospheric Science miami, Florida UNITED STATES
Corresponding Author's Institution:	University of Miami Rosenstiel School of Marine and Atmospheric Science
Corresponding Author E-Mail:	alessandro.cresci@rsmas.miami.edu
Order of Authors:	Alessandro Cresci Rosario De Rosa Claudio Agnisola
Additional Information:	
Question	Response
Please indicate whether this article will be Standard Access or Open Access.	Standard Access (US\$2,400)
Please indicate the city, state/province, and country where this article will be filmed . Please do not use abbreviations.	Naples, Italy

TITLE:

Assessing the Influence of Personality on Sensitivity to Magnetic Fields in Zebrafish

AUTHORS & AFFILIATIONS:

Alessandro Cresci¹, Rosario De Rosa^{2,3}, Claudio Agnisola⁴

¹Rosenstiel School of Marine and Atmospheric Science, Department of Ocean Sciences, University of Miami, Miami, FL, USA

²Department of Physics, Monte S. Angelo (MSA) Campus, University of Naples Federico II, Naples, Italy

³Istituto Nazionale di Fisica Nucleare (INFN), Section of Naples, MSA Campus, Naples, Italy

⁴Department of Biology, MSA Campus, University of Naples Federico II, Naples, Italy

Corresponding author:

Alessandro Cresci (alessandro.cresci@rsmas.miami.edu)

Email addresses of co-authors:

Rosario de Rosa (rderosa@na.infn.it)

Claudio Agnisola (agnisola@unina.it)

KEYWORDS:

Zebrafish, personality, fish behavior, orientation, magnetic field, rheotaxis

SUMMARY:

We describe a behavioral protocol designed to assess how zebrafish's personalities influence their response to water currents and weak magnetic fields. Fishes with the same personalities are separated based on their explorative behavior. Then, their rheotactic orientation behavior in a swimming tunnel with a low flow rate and under different magnetic conditions is observed.

ABSTRACT:

To orient themselves in their environment, animals integrate a wide array of external cues, which interact with several internal factors, such as personality. Here, we describe a behavioral protocol designed for the study of the influence of zebrafish personality on their orientation response to multiple external environmental cues, specifically water currents and magnetic fields. This protocol aims to understand whether proactive or reactive zebrafish display different rheotactic thresholds (i.e., the flow speed at which the fish start swimming upstream) when the surrounding magnetic field changes its direction. To identify zebrafish with the same personality, fish are introduced in the dark half of a tank connected with a narrow opening to a bright half. Only proactive fish explore the novel, bright environment. Reactive fish do not exit the dark half of the tank. A swimming tunnel with low flow rates is used to determine the rheotactic threshold. We describe two setups to control the magnetic field in the tunnel, in the range of the earth's magnetic field intensity: one that controls the magnetic field along the flow direction (one dimension) and one that allows a three-axial control of the magnetic field. Fish are filmed while experiencing a stepwise increase of the flow speed in the tunnel under different magnetic fields.

Data on the orientation behavior are collected through a video-tracking procedure and applied to a logistic model to allow the determination of the rheotactic threshold. We report representative results collected from shoaling zebrafish. Specifically, these demonstrate that only reactive, prudent fish show variations of the rheotactic threshold when the magnetic field varies in its direction, while proactive fish do not respond to magnetic field changes. This methodology can be applied to the study of magnetic sensitivity and rheotactic behavior of many aquatic species, both displaying solitary or shoaling swimming strategies.

INTRODUCTION:

In the present study, we describe a lab-based behavioral protocol which has the scope of investigating the role of fish personality on the orientation response of shoaling fish to external orientation cues, such as water currents and magnetic fields.

The orienting decisions of animals result from weighing various sensory information. The decision process is influenced by the ability of the animal to navigate (e.g., the capacity to select and keep a direction), its internal state (e.g., feeding or reproductive needs), its ability to move (e.g., locomotion biomechanics), and several additional external factors (e.g., time of day, interaction with conspecifics)¹.

The role of the internal state or animal personality in the orientation behavior is often poorly understood or not explored². Additional challenges arise in the study of the orientation of social aquatic species, which often perform coordinated and polarized group movement behavior³.

Water currents play a key role in the orientation process of fish. Fish orient to water currents through an unconditioned response called rheotaxis⁴, which can be positive (i.e., upstream oriented) or negative (i.e. downstream oriented) and is used for several activities, ranging from foraging to the minimization of energetic expenditure^{5,6}. Moreover, a growing body of literature reports that many fish species use the geomagnetic field for orientation and navigation⁷⁻⁹.

The study of rheotaxis and swimming performance in the fish is usually conducted in flow chambers (flume), where fish are exposed to the stepwise increase of the flow speed, from low to high speeds, often until exhaustion (called critical speed)^{10,11}. On the other hand, previous studies investigated the role of the magnetic field in the orientation through the observation of the swimming behavior of the animals in arenas with still water^{12,13}. Here, we describe a laboratory technique that allows researchers to study the behavior of fish while manipulating both the water currents and the magnetic field. This method was utilized for the first time on shoaling zebrafish (*Danio rerio*) in our previous study, leading to the conclusion that the manipulation of the surrounding magnetic field determines the rheotactic threshold (i.e., the minimal water speed at which shoaling fish orient upstream)¹⁴. This method is based on the use of a flume chamber with slow flows combined with a setup designed to control the magnetic field in the flume, within the range of the earth's magnetic field intensity.

The swimming tunnel utilized to observe the behavior of zebrafish is outlined in **Figure 1**. The tunnel (made of a nonreflecting acrylic cylinder with a 7 cm diameter and 15 cm in length) is

connected to a setup for the control of the flow rate¹⁴. With this setup, the range of flow rates in the tunnel varies between 0 and 9 cm/s.

To manipulate the magnetic field in the swimming tunnel, we use two methodological approaches: the first is one-dimensional and the second is three-dimensional. For any application, these methods manipulate the geomagnetic field to obtain specific magnetic conditions in a defined volume of water—thus, all the values of magnetic field intensity reported in this study include the geomagnetic field.

Concerning the one-dimensional approach¹⁵, the magnetic field is manipulated along the water flow direction (defined as the x-axis) using a solenoid wrapped around the swimming tunnel. This is connected to a power unit, and it generates uniform static magnetic fields (**Figure 2A**). Similarly, in the case of the three-dimensional approach, the geomagnetic field in the volume containing the swimming tunnel is modified using coils of electric wires. However, to control the magnetic field in three dimensions, the coils have the design of three orthogonal Helmholtz pairs (**Figure 2B**). Each Helmholtz pair is composed of two circular coils oriented along the three orthogonal space directions (x, y, and z) and equipped with a three-axial magnetometer working in closed-loop conditions. The magnetometer works with field intensities comparable with the earth's natural field, and it is located close to the geometrical center of the coils set (where the swimming tunnel is located).

We implement the techniques described above to test the hypothesis that the personality traits of the fish composing a shoal influence the way they respond to magnetic fields¹⁶. We test the hypothesis that individuals with proactive and reactive personality^{17,18} respond differently when exposed to water flows and magnetic fields. To test this, we first sort zebrafish using an established methodology to assign and group individuals that are proactive or reactive^{17,19–21}. Then, we evaluate the rheotactic behavior of zebrafish swimming in shoals composed of only reactive individuals or composed of only proactive individuals in the magnetic flume tank, which we present as sample data.

The sorting method is based on the different tendency of the proactive and reactive individuals to explore novel environments²¹. Specifically, we use a tank divided into a bright and a dark side^{17,19–21} (**Figure 3**). Animals are acclimated to the dark side. When access to the bright side is open, proactive individuals tend to quickly exit the dark half of the tank to explore the new environment, while the reactive fish do not leave the dark tank.

PROTOCOL:

The following protocol has been approved by the Institutional Animal Care and Use Committee of the University of Naples Federico II, Naples, Italy (2015).

1. Animal maintenance

1.1. Use tanks of at least 200 L to host a shoal of at least 50 individuals of both sexes in each tank.

NOTE: The density of the fish in the tank has to be one animal per 2 L or lower. Under these conditions, zebrafish will display normal shoaling behavior.

1.2. Set the maintenance conditions as follow: temperature at 27–28 °C; conductivity at <500 µS; pH 6.5–7.5; NO₃ at <0.25 mg/L; and a light:dark photoperiod at 10 h:14 h.

NOTE: Identical holding conditions must be used for both the mixed population and the separated proactive and reactive populations.

2. Personality selection in zebrafish

2.1. Prepare and place the personality selection tank in a quiet room (**Figure 3**) with the same water as used in the maintenance tanks.

2.2. Place a video camera above or at the side of the tank. Connect the camera to a computer with a monitor located in an area where there is no visual contact with the tank.

NOTE: Try to limit the interactions with the tanks and fish to the least amount of time possible. Avoid noise and fast movements.

2.3. Select nine fish at random from the maintenance tank and transfer them to the dark side of the personality selection tank, using a knotless net.

NOTE: If necessary, transfer the animals in a small-volume transporting tank (about 2 L) with water from the holding tank. The fish must be fed ad libitum prior to the transfer to the experimental tank. This limits the possibility that different tendencies of food-seeking behavior would affect the behavior of the individuals during the following experiment²². Try to minimize the capture time, avoid collecting multiple fish as it might cause physical damage to the animals, and do not hold the fish for more than a few seconds in the net as these factors can increase stress. Conduct replicate experiments at the same time of the day. This minimizes variability in the behavior of the experimental groups caused by possible circadian rhythms²³.

2.4. After 1 h of acclimatization, open the sliding door.

NOTE: Individuals who exit from the hole, exploring the bright side of the tank within 10 min, are considered proactive²¹.

2.5. After 10 min, gently remove the proactive individuals from the tank and transfer them to the proactive maintenance tank.

2.6. After 15 min, collect the fish that remain in the dark box, which are considered reactive²¹, and transfer them to the reactive maintenance tank.

NOTE: Discard fish that move to the bright side of the tank after 10 min²¹. Perform the personality

test with nine fish at a time until the desired number of proactive and reactive fish necessary for the tests described in section 5 are collected. Consistency of the proactive and reactive personality can be checked regularly using the same approach.

3. Set up of the magnetic field with the one-dimensional magnetic field manipulation²⁷

3.1. Switch on the Power unit (**Figure 2A**).

3.2. Place the coiled tunnel in the location where the rheotactic protocol will be performed (section 5) but keep it disconnected from the swimming apparatus (**Figure 2A**). Place a magnetic probe connected with a Gauss/Teslameter inside the tunnel and verify which voltage is necessary to obtain the chosen magnetic field value along the major axis of the tunnel.

NOTE: Because of the magnetic properties of a solenoid, the field is reasonably uniform inside the tunnel; this can be checked by slowly moving the probe both horizontally and vertically.

3.3. Disconnect the probe and connect the flow tunnel to the swimming apparatus.

3.4. Start with the rheotactic protocol (section 5).

4. Set up of the magnetic field with the three-dimensional magnetic field manipulation²⁷

4.1. Switch on the CPU, DAC, and coil drivers (**Figure 2B**).

4.2. Set the chosen magnetic field on each one of the three axes (x, y, and z).

4.3. Place the tunnel in the center of the Helmholtz pairs set.

4.4. Start with the rheotactic protocol (section 5).

5. Test of the zebrafish rheotaxis in the flow chamber

5.1. Transfer one to five fish to the flow tunnel using a 2 L tank with the sides and the bottom obscured.

5.2. Turn on the pump and set the flow rate in the tunnel to 1.7 cm/s.

NOTE: This slow-moving water will keep the water in the tunnel oxygenated and it will facilitate animal recovery.

5.3. Let the animals acclimate to the swimming tunnel for 1 h.

5.4. Start the video recording of the behavior of the fish in the tunnel.

NOTE: We used a camera (e.g., Yi 4K Action) with remote control (e.g., Bluetooth) and saved the video as .mpg (30 frames/s).

5.5. Start the stepwise increase of the flow rate according to the chosen experimental protocol (1.3 cm/s in this study; **Figure 4**).

NOTE: For this protocol, we used low flow rates which, for zebrafish, range from 0 to 2.8 BL (body lengths)/s. These flow speeds are in the lower range of flow rates that induce continuous oriented swimming in zebrafish (3%–15% of critical swimming speed [U_{crit}])²⁴. The use of low flow rates (following Brett's protocol²⁵) is linked to the specific behavioral characteristics of this species in the presence of water currents. Zebrafish tend to swim along the major axis of the chamber, turning frequently, even in the presence of water flow, and tend to swim both upstream and downstream^{24,26}. This behavior is affected by the water flow rate, disappearing at relatively high speeds (>8 BL/s)²⁶, when the animals continuously swim facing upstream (full positive rheotactic response). Vertical and transversal displacements are very rare.

5.6. Perform morphometry of the animals (sex and total length [TL], fork length [FL], or BL) on screenshots from the video recordings of the fish in the swimming tunnel.

5.6.1. Select the appropriate screenshot.

5.6.2. Open the screenshot in ImageJ.

5.6.3. Take note of the sex of the animal (male zebrafish are slender and tend to be yellowish, while females are more rounded and tend to have blue and white colorings).

5.6.4. Click **Analyze > Set Scale** and set the scale of the image in centimeters, using the whole horizontal length of the tunnel as reference.

5.6.5. Click **Analyze > Measure** and record the linear length of the animal.

5.6.6. Calculate its body weight (BW).

NOTE: BW is calculated from sex-FL-BW relationships previously built in the lab or from metadata. The whole procedure avoids manipulation stress on the animals.

6. Video tracking

6.1. Open the video file with Tracker 4.84 Video Analysis and Modeling Tool.

NOTE: If necessary, correct any video distortion using perspective and radial distortion filters.

6.2. Click on **Coordinate system** in the upper menu and set the length units to centimeters and the time units to seconds.

265
266 6.3. Click on **File > Import > Video** and open one of the videos in Tracker 4.84.

267
268 6.4. Click on **Coordinate axes** and set the reference system to track the position of the fish over
269 time with the x-axis along the tunnel. Set the origin at the low corner of the wall upstream (at
270 the water inlet).

271
272 6.5. Click on **Track > New > Point of mass** and start tracking one fish at a time. Track the last 5
273 min of each step that the fish spent at each flow rate.

274
275 6.6. Advance the video manually at five-frame intervals (0.5 s) and mark the time and position of
276 the animal at each upstream-downstream turn (UDt; red dots in **Figure 5**) and at each
277 downstream-upstream turn (DUt; blue dots in **Figure 5**).

278
279 NOTE: Use the fish eye position as a reference for the fish's position. Track the animal's position
280 using a Point mass. Exclude from the tracking any period of non-oriented swimming (i.e.,
281 maneuvering time).

282
283 6.7. At the end of each tracking session, select the x-values and time values from the table at the
284 bottom-right corner of the software window. Right-click on the data and click **Copy data > Full**
285 **precision**.

286
287 6.8. Save the time values and x-values of all turning positions on a template spreadsheet file to
288 calculate the total upstream time (sum of all the intervals between UDts and DUts) and the total
289 downstream time (sum of the intervals between DUts and UDt), as well as the values of the
290 rheotactic index in percentages (RI%) for each flow step (see **Figure 5**).

291
292 NOTE: The rheotactic behavior is quantified by the proportion of the total oriented time that the
293 fish spend facing upstream (swimming or rarely freezing [i.e., they stay still at the bottom of the
294 tunnel]²⁷). This proportion is defined as the RI% (**Figure 5**).

295
296
$$RI (\%) = \frac{\text{upstream time}}{(\text{upstream time} + \text{downstream time})} \times 100$$

297 298 **REPRESENTATIVE RESULTS:**

299 As sample data we present results obtained controlling the magnetic field along the water flow
300 direction on proactive and reactive shoaling zebrafish¹⁶ using the setup shown in **Figure 2A** (see
301 section 3 of the protocol). These results show how the described protocol can highlight
302 differences in responses to the magnetic field in fish with different personalities. The overall
303 concept of these trials relies on the finding that the direction of the magnetic field relative to the
304 water flow affects the rheotactic threshold in shoaling zebrafish¹⁴. Thus, as changes in the
305 magnetic field modulate the rheotaxis, this protocol can be used to assess if the response of
306 zebrafish to magnetic fields differ according to their proactive or reactive personality²⁸.

At first, using the dark/bright tank as shown in **Figure 3**, zebrafish were split into different groups according to their proactive/reactive personality. Following such a test, shoals of five fish with the same personality were then tested in the solenoid swimming tunnel (**Figure 1** and **Figure 2A**). A total of 20 fish were tested: two shoals composed of five reactive fish each (10 reactive fish) and two shoals composed of five proactive fish each (10 proactive fish).

One shoal at a time was video recorded while swimming in the tunnel and the water current was accelerated with a stepwise increase of the flow rate as schematically shown in **Figure 4**. The fish were allowed to acclimate for 1 h in the tunnel. After that, we applied the protocol for the quantification of the rheotactic behavior, using a stepwise increase of the flow rate according to the classic Brett protocol²⁵. Specifically, the flow rate increased by 0.4 BL/s every 10 min for a total of seven consecutive steps (**Figure 4**). The behavior of the zebrafish was recorded throughout the whole duration of the run in the tunnel (70 min), and the RI value at each step was calculated (see protocol step 6.8).

During the runs in the swimming tunnel, the magnetic field was set at one of the two following conditions: 50 μ T downstream (i.e., the horizontal component [along the x-axis] of the magnetic field had the same direction of water flow) and 50 μ T upstream (i.e., the horizontal component of the magnetic field had an opposite direction with respect to the water flow)¹⁶. The intensity along axes y and z were not affected, as well as the total intensity and inclination of the magnetic field vector. Each shoal of five fish was exposed to only one of the two magnetic conditions. For example, considering proactive fish, one proactive shoal had the magnetic field directed downstream and the other proactive shoal had the magnetic field directed upstream.

The videos were then analyzed with the video-tracking software (section 6 of the protocol). The fish were video recorded for the whole duration of the run in the swimming tunnel. However, only the last 5 min of each 10 min-long stepwise increase of flow rate (**Figure 4**) were tracked. During the tracked time, the turns of each fish at each flow rate were highlighted (**Figure 5**, red and blue data points). These were then used as references to calculate the RI of each fish and each flow speed (**Figure 5**). The RI index ranges between 0% and 100%. When below 50%, the RI index indicates that the fish displayed negative rheotaxis (prevalence of downstream swimming); when the RI is higher than 50%, it shows that the animal had a positive rheotactic response (prevalence of upstream swimming). An RI not significantly different from 50% would indicate an absence of rheotactic response. The values of RI% of all the five fish in a shoal were then averaged at each flow rate. These averaged data were arcsine transformed and used to fit the curves displayed in **Figure 6A**. Thus, the rheotactic index increases sigmoidally when the water speed increases, allowing the quantification of the rheotaxis with a simple mathematical method. The relationship between the RI and the flow rate can be fitted to the following logistic-sigmoidal model.

$$RI = RI_{bottom} + \frac{(RI_{plateau} - RI_{bottom})}{(1 + 10^{(R_{tr-flow rate})})}$$

Three parameters and their variability can be derived from the fit curve. The $RI_{plateau}$ measures the maximal tendency of the animals to orient upstream in the range of flow rates used in the experiment. RI_{bottom} is the RI value in the absence of water flow and, hypothetically, should not differ from 50%. R_{tr} is the flow rate at which the maximum slope of the curve occurs, and it can be used as a measure of the rheotactic threshold⁶.

The results indicate that the rheotactic threshold (R_{tr}) of zebrafish is very low, in the range of a few centimeters per second. Variations of the magnetic field do not affect the R_{tr} of proactive fish (no effect of the magnetic field, t -test, $P > 0.05$). Oppositely, magnetic field changes have a pronounced effect on the rheotactic behavior of reactive zebrafish. When the magnetic field component along the swimming tunnel was directed downstream, the R_{tr} is very low and similar to that of proactive fish. The threshold was significantly higher when the magnetic field was directed upstream (t -test, $P < 0.01$).

The $RI_{plateau}$ value of reactive animals was significantly lower when the magnetic field was directed upstream (t -test, $P < 0.01$). This result indicates that with these conditions, reactive fish would reach the full positive rheotactic response ($RI = 100\%$) only at very high flow rates. Thus, this result highlights that, compared to R_{tr} , $RI_{plateau}$ provides less information about the swimming behavior of the fish. In fact, based on the strong difference in the reactive $RI_{plateau}$ between the two magnetic conditions, we can state that, under the upstream-oriented magnetic field, the reactive animals will probably display a full rheotactic response at a higher water flow.

RI_{bottom} values tend to be higher (although not significantly) than 50% in the proactive animals and in the reactive animals exposed to a downstream-oriented magnetic field. This may indicate a bias in the protocol since the animals characterized by a very low threshold may remember the flow direction experienced during acclimation. A proper protocol could be devised to test this possibility.

FIGURE AND TABLE LEGENDS:

Figure 1: Simplified representation of the swimming tunnel apparatus utilized in the present study.

Figure 2: Setup for magnetic field control. (A) Rendering of the swimming tunnel with a solenoid for the induction of a static, horizontal magnetic field within the tunnel. The solenoid (0.83 turns/cm) is connected to a power unit and it generates fields in the range of $\pm 250 \mu T$ (intensity range that includes the earth's magnetic field range). On the right-hand side, a photo of the solenoid tunnel connected to the swimming apparatus is shown. The tunnel is made of acrylic and it has two perforated acrylic plates placed at the water inlet, which guarantee the flow to be close to laminar. **(B)** Diagram and photo of the three orthogonal Helmholtz pairs set for the control of the magnetic field in the geomagnetic range of intensities. The magnetic field probe, the CPU, the digital-to-analog converter, and the coil drivers used to close the loop are also shown. Each pair of coils is composed of two circular coils with a radius (r) of 30 cm and $N = 50$ turns of AWG-14 copper wires. A three-axes magnetometer (sensor) with selectable scale (± 88

μT to $\pm 810 \mu\text{T}$) is placed close to the center of the coil set. The sensor range is set to values ranging to $\pm 130 \mu\text{T}$. These values were also used for the measurements described in the representative results (in these conditions, the nominal sensor resolution is about $0.1 \mu\text{T}$). The intensity and the direction of the magnetic field are controlled with a digital feedback system. The sensor measures the three components of the magnetic field vector (the three axes), and the corresponding error signals are extracted. Then, the correction signals are generated by a simple integrator filter. The digital correction signals are converted to voltage by a digital-to-analog converter and amplified by a suitable coil driver. These last signals are used to drive the Helmholtz pairs. The sampling frequency is fixed to 5 Hz and the unity gain frequency of the loops is about 0.16 Hz. Once the currents in the Helmholtz pairs of the coils are set, the total magnetic field varies less than 2% from its mean intensity value in the central cubic volume (with edge $L = 10 \text{ cm}$) of the coils. During the measurements, the magnetic field rms is less than $0.2 \mu\text{T}$. In both the setups (panels **A** and **B**) a static electric field is generated by the current in the coils producing the magnetic field¹⁶. The intensity of the electric field is about 0.4 V/m when the maximum current is applied; this value is negligible compared to natural or artificial static fields present in the environment whose intensity is of the order of 1 kV/m ¹⁷.

Figure 3: Schematic representation of the tank (40 cm x 40 cm x 40 cm) used to separate proactive from reactive zebrafish individuals (not in scale), according to Rey et al.²¹. The volume of the personality selection tank is 50 L. Half of the tank was occupied by a dark box with a hole of 5 cm in diameter on the side of the box facing the bright half of the tank. The hole was covered by a sliding door (not shown), whose opening signed the start of a selecting trial. The dark side of the tank needs a removable cover to allow access of hand nets. This facilitates placing or catching fish before and after the behavioral trials.

Figure 4: Diagram of the flow rates used during the tests to determine the rheotactic threshold of zebrafish. The flow during the 1 h acclimation period was enough to guarantee an adequate oxygen supply to the animals. It can be assumed that, with this design, oxygen supply is never a limit, even in the first 10 min step with flow 0. Indeed, with an oxygen content of water at 27°C of about 7.9 mg/L and an animal oxygen consumption of 1 mg/h.g (an excess approximation for zebrafish oxygen consumption both under routine conditions [Uliano et al.²⁹] and at low-speed swimming [Palstra et al.³⁰]), it is possible to calculate that, in the absence of flow, the Po_2 in the flume will not decrease more than 2% per animal, remaining well above the critical Po_2 (about 40 torr for zebrafish). This figure has been modified from Cresci et al.¹⁴.

Figure 5: Animal behavior in the tunnel and the calculation of RI. The graphs present the position of an individual animal along the x-axis during a 300 s record at three values of flow rate. The red dots represent the downstream-to-upstream turns, the blue dots the upstream-to-downstream turns. The corresponding time intervals spent by the animals downstream or upstream are also reported, and the total upstream and downstream times are reported, from which an RI value can be calculated. It can be observed that when increasing the flow rate, the upstream time and the RI values increase.

Figure 6: Representative results. (A) Relationship between arcsine-transformed RI values (RI is

the percentage of the total oriented time that fish spend facing upstream) and the flow rate for proactive and reactive shoaling zebrafish under two magnetic field conditions along the flow rate direction (one-dimension control). Each data point is the average of the RI values of the five fish composing the shoal, at each flow rate. Significant differences between curves were tested via a sum-of-squares *F*-test ($\alpha = 0.05$)¹⁴. (B) Magnetic field axes and direction of the water flow in the tunnel. A three-dimensional representation of the magnetic vectors in the two magnetic field conditions used in this study is also shown. The magnetic field in the lab (40°N, 14°E) was: $F = 62 \mu\text{T}$; $I = 64^\circ$; $D = 44^\circ$. This figure has been modified from Cresci et al.¹⁶.

DISCUSSION:

The protocol described in this study allows scientists to quantify complex orientation responses of aquatic species resulting from the integration between two external cues (water current and geomagnetic field) and one internal factor of the animal, such as personality. The overall concept is to create an experimental design that allows scientists to separate individuals of different personality and investigate their orientation behavior while controlling separately or simultaneously the external environmental cues.

The protocol described in this study, together with the mathematical definition of the rheotactic index (RI), was designed following preliminary observations of the behavior of zebrafish in the swimming tunnel. When placed in a tunnel, these animals display two types of behavioral patterns, both in the absence or presence of water flow: oriented swimming and maneuvering. They spend the majority of the oriented time (usually, the fish were video recorded for more than 95% of the time) swimming along the tunnel (i.e., oriented along the long axis with an angle lower than 45°), back and forth, turning in proximity of the end walls and often showing thigmotaxis (i.e., swimming close to the walls of the tunnel)²⁷.

For this protocol to be successful, it is important that whoever performs the experiment pays attention to the stress of the animals. The transportation of the fish between the experimental setups must be executed with care. The usage of hand nets should be as quick as possible, and some training before the actual experiment is highly recommended as zebrafish are fast swimmers and hard to catch in a tank. Stress can dramatically affect the behavior of these animals, and in the case of zebrafish, it can significantly change their swimming behavior²⁷. This would probably affect the results, as fish might display hyperactive behavior and be less sensitive to water flows and magnetic field changes. Contact with the animals in the experimental setup should be as quick and short as possible. The behavioral analysis requires remote observation, which also requires practice. Moreover, it is important to analyze the videos blindly (i.e., without knowing protocols and treatments).

The rheotactic behavior of many species of fish has been studied using swimming tunnels^{5,10,11,31}. Numerous previous studies focused on the estimation of the swimming speed that fish can sustain until exhaustion, which is defined as U_{crit} , mostly to test physiological and ecological hypotheses^{11,32,33}. The method described in this study focuses, instead, on the rheotactic behavior at low flow speeds. This choice was made because the objective of this study is to assess the sensitivity to a subtle and weak cue like the magnetic field through the observation of a well-

known and robust orientation behavior of fish, the positive rheotaxis. In the representative results reported here, zebrafish displayed a very low rheotactic threshold (only a few centimeters per second). This observation could be ecologically relevant for this species, which inhabits environments where the speed of water currents can significantly vary. Zebrafish live both in turbulent rivers³⁴ and in water bodies where the water moves slowly, such as paddies, ponds, and floodplains³⁵. When water moves slowly, the ability to detect and orient at low flow speeds (a low rheotactic threshold) could possibly be advantageous, as the rheotactic response increases the chances to intercept downstream-drifting prey³⁶ and provides directional stimuli for migration³⁷.

These observations could not be made using flows with high rates. These would elicit a strong locomotory response that would depend more on the body conditions and high swimming performances of the animals rather than external cues like the magnetic field. The protocol presented here was applied on zebrafish, but it is likely suitable for any freshwater or marine species that inhabit environments with moving water and can be handled in laboratory conditions.

However, this protocol presents some limitations. While it clearly highlights whether a species is sensitive or nonsensitive to magnetic fields, it cannot reveal the orientation mechanisms through which the animal uses magnetic fields for movement decisions. In order to investigate the magnetic orientation mechanisms in aquatic species, setups with circular arenas and still water^{7,38,39} or mazes¹³ are commonly used. However, fish (and aquatic animals in general) do not live in environments where currents are absent, and the presented method is a first attempt to investigate the integrative behavioral response to ubiquitous directional cues, like water flows and magnetic fields. Another limitation of this protocol is the manual video-tracking procedure. Integrating this setup with an automatic tracking software would improve the timing of the whole data analysis process.

The experimental protocol presented here is the first one designed to investigate the influence of animal personality on magnetic sensitivity and rheotaxis. This topic has been overlooked in the literature and needs to be further explored. Individuals from the same species, or even within a population or small group (such as a fish shoal), are characterized by different personality traits^{22,40}, which can be an important factor in studies on migratory, exploratory, navigation, and orientation behavior. Not all the individuals integrate the environmental cues in the same way. Thus, taking into account internal factors, such as personality, could help to reduce the data variability which is commonly observed in studies on movement ecology¹⁶.

ACKNOWLEDGMENTS:

The study was supported by the Basic Research Founding of the Physics Department and the Biology Department of the Naples University Federico II. The authors thank Dr. Claudia Angelini (Institute of Applied Calculus, Consiglio Nazionale delle Ricerche [CNR], Italy) for the statistical support. The authors thank Martina Scanu and Silvia Frassinetti for their technical help with collecting the data, and the departmental technicians F. Cassese, G. Passeggio, and R. Rocco for their skillful assistance in the design and realization of the experimental setup.

DISCLOSURES:

The authors have nothing to disclose.

REFERENCES:

1. Nathan, R. et al. A movement ecology paradigm for unifying organismal movement research. *Proceedings of the National Academy of Sciences*. **105** (49), 19052–19059, doi: 10.1073/pnas.0800375105 (2008).
2. Holyoak, M., Casagrandi, R., Nathan, R., Revilla, E., Spiegel, O. Trends and missing parts in the study of movement ecology. *Proceedings of the National Academy of Sciences*. **105** (49), 19060–19065, doi: 10.1073/pnas.0800483105 (2008).
3. Miller, N., Gerlai, R. From Schooling to Shoaling: Patterns of Collective Motion in Zebrafish (*Danio rerio*). *PLoS ONE*. **7** (11), 8–13, doi: 10.1371/journal.pone.0048865 (2012).
4. Chapman, J.W. et al. Animal orientation strategies for movement in flows. *Current Biology*. **21** (20), R861–R870, doi: 10.1016/j.cub.2011.08.014 (2011).
5. Montgomery, J.C., Baker, C.F., Carton, A.G. The lateral line can mediate rheotaxis in fish. *Nature*. **389** (6654), 960–963, doi: 10.1038/40135 (1997).
6. Baker, C.F., Montgomery, J.C. The sensory basis of rheotaxis in the blind Mexican cave fish, *Astyanax fasciatus*. *Journal of Comparative Physiology A: Sensory, Neural, and Behavioral Physiology*. **184** (5), 519–527, doi: 10.1007/s003590050351 (1999).
7. Putman, N.F. et al. An Inherited Magnetic Map Guides Ocean Navigation in Juvenile Pacific Salmon. *Current Biology*. **24** (4), 446–450, doi: 10.1016/J.CUB.2014.01.017 (2014).
8. Cresci, A. et al. Glass eels (*Anguilla anguilla*) have a magnetic compass linked to the tidal cycle. *Science Advances*. **3** (6), 1–9, doi: 10.1126/sciadv.1602007 (2017).
9. Newton, K.C., Kajiura, S.M. Magnetic field discrimination, learning, and memory in the yellow stingray (*Urolophus hannah*). *Animal Cognition*. **20** (4), 603–614, doi: 10.1007/s10071-017-1084-8 (2017).
10. Langdon, S.A., Collins, A.L. Quantification of the maximal swimming performance of Australasian glass eels, *Anguilla australis* and *Anguilla reinhardtii*, using a hydraulic flume swimming chamber. *New Zealand Journal of Marine and Freshwater Research*. **34** (4), 629–636, doi: 10.1080/00288330.2000.9516963 (2000).
11. Faillettaz, R., Durand, E., Paris, C.B., Koubbi, P., Irisson, J.O. Swimming speeds of Mediterranean settlement-stage fish larvae nuance Hjort’s aberrant drift hypothesis. *Limnology and Oceanography*. **63** (2), 509–523, doi: 10.1002/lno.10643 (2018).
12. Takebe, A. et al. Zebrafish respond to the geomagnetic field by bimodal and group-dependent orientation. *Scientific Reports*. **2**, 727, doi: 10.1038/srep00727 (2012).
13. Osipova, E.A., Pavlova, V. V., Nepomnyashchikh, V.A., Krylov, V. V. Influence of magnetic field on zebrafish activity and orientation in a plus maze. *Behavioural Processes*. **122**, 80–86, doi: 10.1016/j.beproc.2015.11.009 (2016).
14. Cresci, A., De Rosa, R., Putman, N.F., Agnisola, C. Earth-strength magnetic field affects the rheotactic threshold of zebrafish swimming in shoals. *Comparative Biochemistry and Physiology - Part A: Molecular and Integrative Physiology*. **204**, 169–176, doi: 10.1016/j.cbpa.2016.11.019 (2017).
15. Tesch, F.W. Influence of geomagnetism and salinity on the directional choice of eels.

570 *Helgoländer Wissenschaftliche Meeresuntersuchungen*. **26** (3–4), 382–395, doi:
571 10.1007/BF01627623 (1974).

572 16. Cresci, A. et al. Zebrafish “personality” influences sensitivity to magnetic fields. *Acta*
573 *Ethologica*. 1–7, doi: 10.1007/s10211-018-0292-9 (2018).

574 17. Benus, R.F., Bohus, B., Koolhaas, J.M., Van Oortmerssen, G.A. Heritable variation for
575 aggression as a reflection of individual coping strategies. *Cellular and Molecular Life Sciences*. **47**
576 (10), 1008–1019 (1991).

577 18. Dahlbom, S.J., Backstrom, T., Lundstedt-Enkel, K., Winberg, S. Aggression and monoamines:
578 Effects of sex and social rank in zebrafish (*Danio rerio*). *Behavioural Brain Research*. **228** (2), 333–
579 338, doi: 10.1016/j.bbr.2011.12.011 (2012).

580 19. Koolhaas, J.M. Coping style and immunity in animals: Making sense of individual variation.
581 *Brain, Behavior, and Immunity*. **22** (5), 662–667, doi: 10.1016/j.bbi.2007.11.006 (2008).

582 20. Dahlbom, S.J., Lagman, D., Lundstedt-Enkel, K., Sundström, L.F., Winberg, S. Boldness predicts
583 social status in zebrafish (*Danio rerio*). *PLoS ONE*. **6** (8), 2–8, doi: 10.1371/journal.pone.0023565
584 (2011).

585 21. Rey, S., Boltana, S., Vargas, R., Roher, N., Mackenzie, S. Combining animal personalities with
586 transcriptomics resolves individual variation within a wild-type zebrafish population and
587 identifies underpinning molecular differences in brain function. *Molecular Ecology*. **22** (24),
588 6100–6115, doi: 10.1111/mec.12556 (2013).

589 22. Toms, C.N., Echevarria, D.J., Jouandot, D.J. A Methodological Review of Personality-related
590 Studies in Fish: Focus on the Shy-Bold Axis of Behavior. *International Journal of Comparative*
591 *Psychology*. **23**, 1–25 (2010).

592 23. Boujard, T., Leatherland, J.F. Circadian rhythms and feeding time in fishes. *Environmental*
593 *Biology of Fishes*. **35** (2), 109–131, doi: 10.1007/BF00002186 (1992).

594 24. Plaut, I. Effects of fin size on swimming performance, swimming behaviour and routine
595 activity of zebrafish *Danio rerio*. *Journal of Experimental Biology*. **203** (4), 813–820 (2000).

596 25. Tierney, P., Farmer, S.M. Creative Self-Efficacy Development and Creative Performance Over
597 Time. *Journal of Applied Psychology*. **96** (2), 277–293, doi: 10.1037/a0020952 (2011).

598 26. Plaut, I., Gordon, M.S. swimming metabolism of wild-type and cloned zebrafish *brachydanio*
599 *rerio*. *Journal of Experimental Biology*. **194** (1) (1994).

600 27. Kalueff, A. V. et al. Towards a comprehensive catalog of zebrafish behavior 1.0 and beyond.
601 *Zebrafish*. **10** (1), 70–86, doi: 10.1089/zeb.2012.0861 (2013).

602 28. Tudorache, C., Schaaf, M.J.M., Slabbekoorn, H. Covariation between behaviour and
603 physiology indicators of coping style in zebrafish (*Danio rerio*). *Journal of Endocrinology*. **219** (3),
604 251–258, doi: 10.1530/JOE-13-0225 (2013).

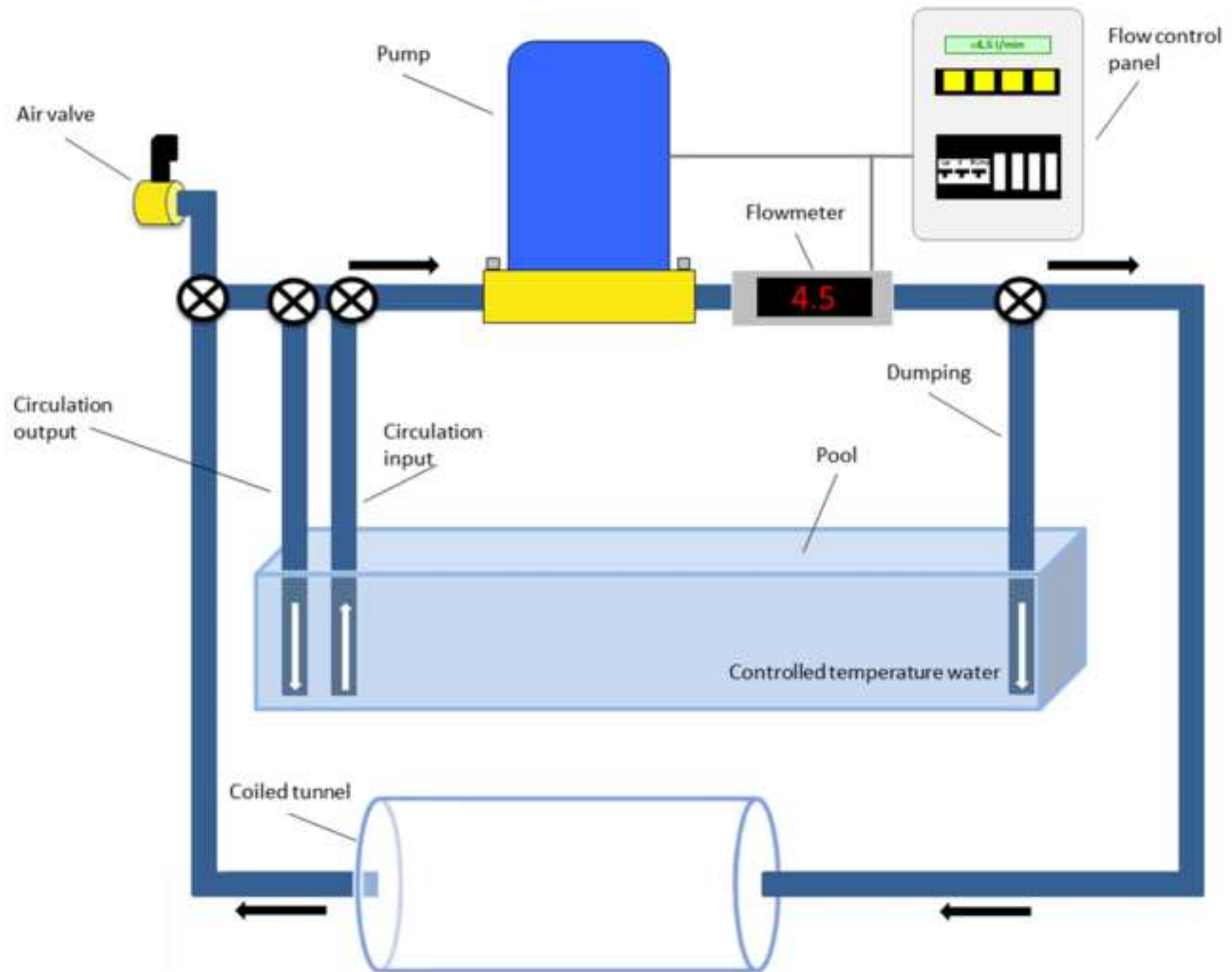
605 29. Uliano, E. et al. Effects of acute changes in salinity and temperature on routine metabolism
606 and nitrogen excretion in gambusia (*Gambusia affinis*) and zebrafish (*Danio rerio*). *Comparative*
607 *Biochemistry and Physiology Part A: Molecular & Integrative Physiology*. **157** (3), 283–290, doi:
608 10.1016/J.CBPA.2010.07.019 (2010).

609 30. Palstra, A.P. et al. Establishing zebrafish as a novel exercise model: Swimming economy,
610 swimming-enhanced growth and muscle growth marker gene expression. *PLoS ONE*. **5** (12), doi:
611 10.1371/journal.pone.0014483 (2010).

612 31. Bak-Coleman, J., Court, A., Paley, D.A., Coombs, S. The spatiotemporal dynamics of rheotactic
613 behavior depends on flow speed and available sensory information. *The Journal of Experimental*

- Biology*. **216**, 4011–4024, doi: 10.1242/jeb.090480 (2013).
32. Brett, J.R. The Respiratory Metabolism and Swimming Performance of Young Sockeye Salmon. *Journal of the Fisheries Research Board of Canada*. **21** (5), 1183–1226, doi: 10.1139/f64-103 (1964).
33. Quintella, B.R., Mateus, C.S., Costa, J.L., Domingos, I., Almeida, P.R. Critical swimming speed of yellow- and silver-phase European eel (*Anguilla anguilla*, L.). *Journal of Applied Ichthyology*. **26** (3), 432–435, doi: 10.1111/j.1439-0426.2010.01457.x (2010).
34. Spence, R., Gerlach, G., Lawrence, C., Smith, C. The behaviour and ecology of the zebrafish, *Danio rerio*. *Biological Reviews*. **83** (1), 13–34, doi: 10.1111/j.1469-185X.2007.00030.x (2008).
35. Engeszer, R.E., Patterson, L.B., Rao, A.A., Parichy, D.M. Zebrafish in the Wild: A Review of Natural History and New Notes from the Field. *Zebrafish*. **4** (1), doi: 10.1089/zeb.2006.9997 (2007).
36. Gardiner, J.M., Atema, J. Sharks need the lateral line to locate odor sources: rheotaxis and eddy chemotaxis. *Journal of Experimental Biology*. **210** (11), 1925–1934, doi: 10.1242/jeb.000075 (2007).
37. Thorpe, J.E., Ross, L.G., Struthers, G., Watts, W. Tracking Atlantic salmon smolts, *Salmo salar* L., through Loch Voil, Scotland. *Journal of Fish Biology*. **19** (5), 519–537, doi: 10.1111/j.1095-8649.1981.tb03820.x (1981).
38. Bottesch, M. et al. A magnetic compass that might help coral reef fish larvae return to their natal reef. *Current Biology*. **26** (24), R1266–R1267, doi: 10.1016/j.cub.2016.10.051 (2016).
39. Boles, L.C., Lohmann, K.J. True navigation and magnetic maps in spiny lobsters. *Nature*. **421** (6918), 60–63, doi: 10.1038/nature01226 (2003).
40. Dingemanse, N.J., Kazem, A.J.N., Réale, D., Wright, J. Behavioural reaction norms: animal personality meets individual plasticity. *Trends in Ecology and Evolution*. **25** (2), 81–89, doi: 10.1016/j.tree.2009.07.013 (2010).

Figure 1



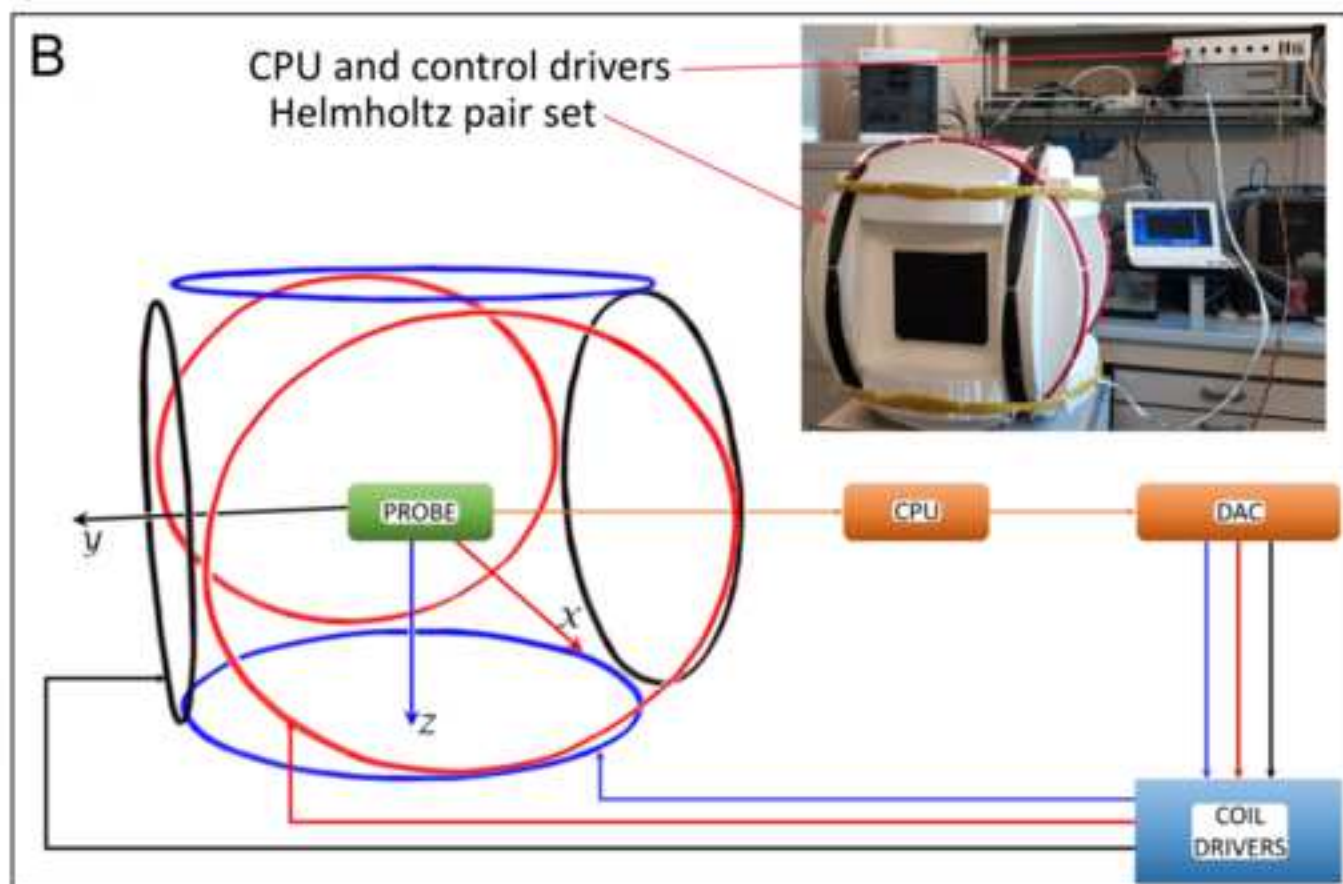
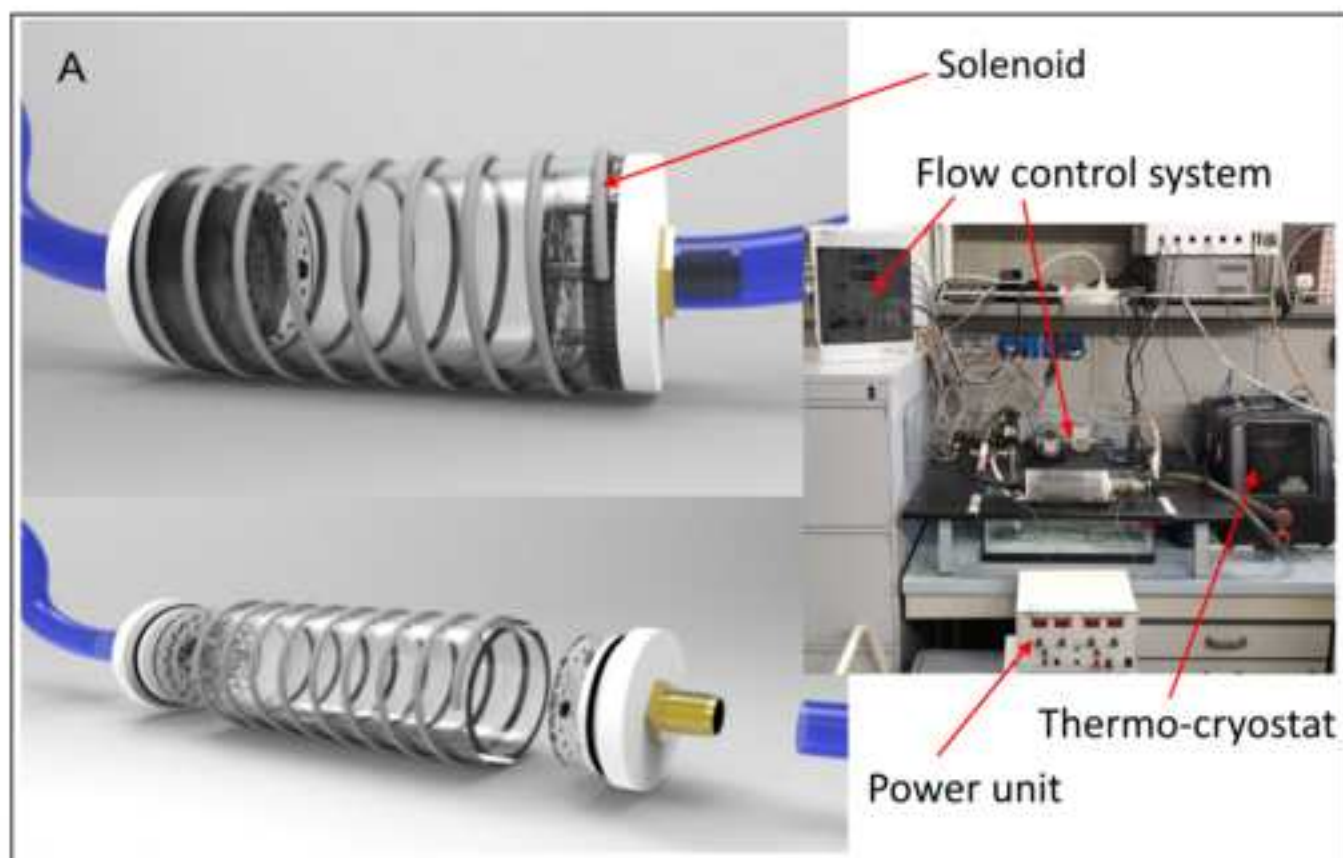
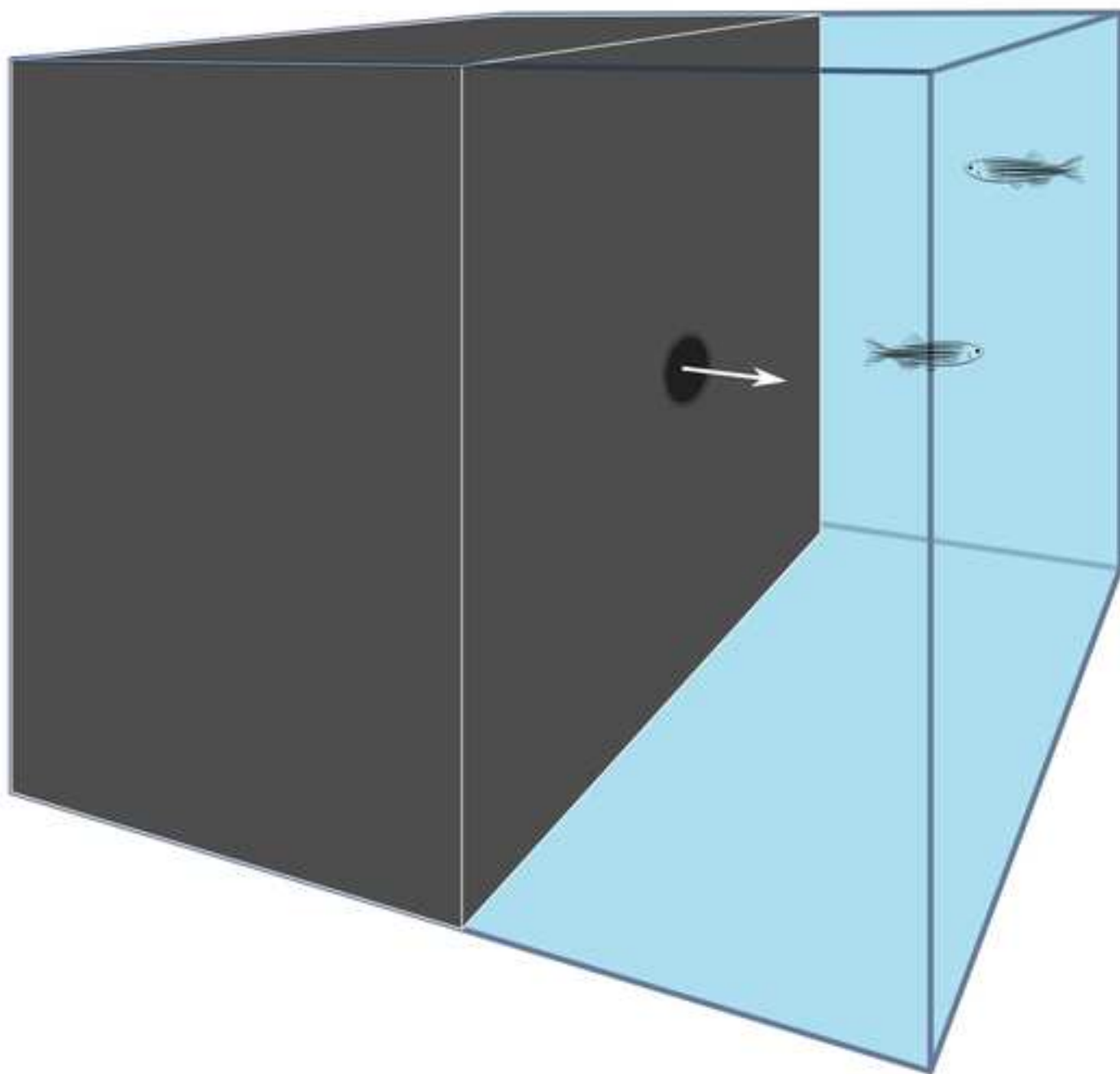


Figure 3

[Click here to access/download;Figure;Figure 3.tif](#) 



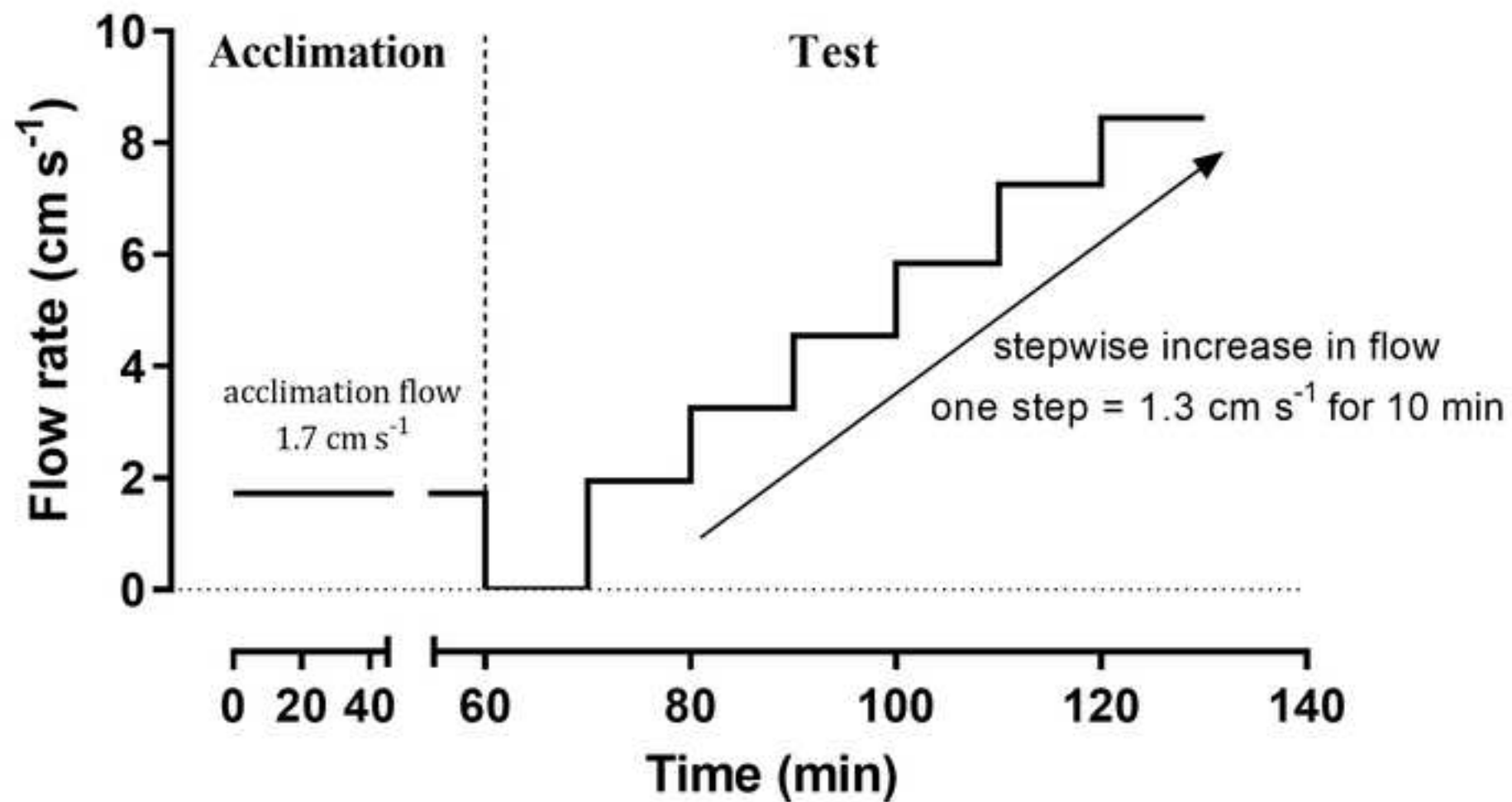
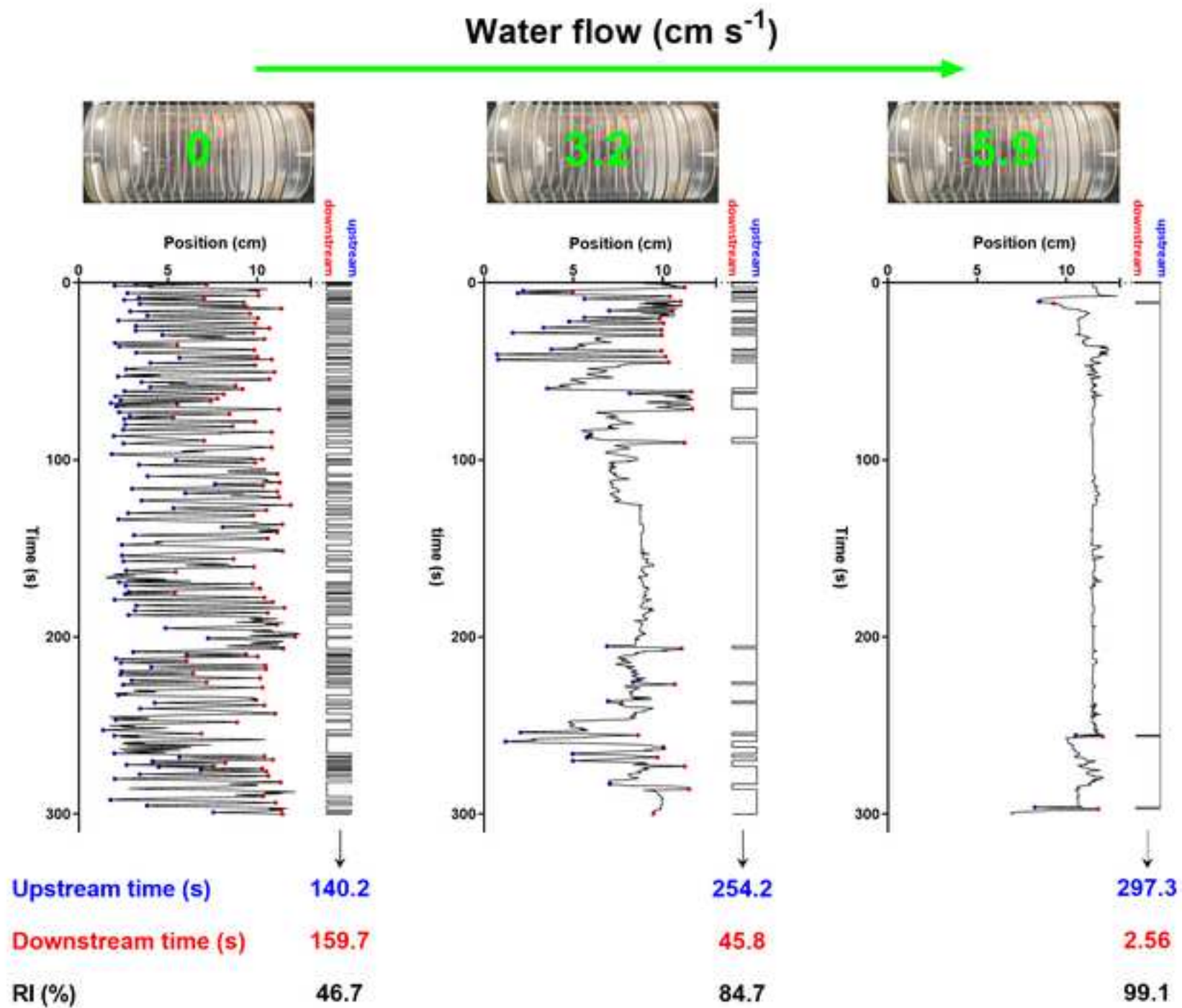


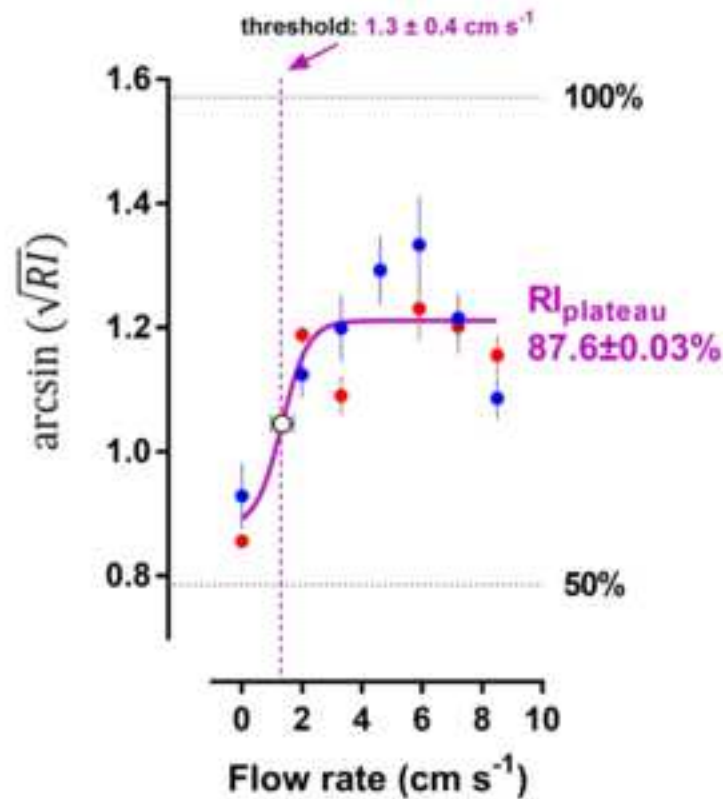
Figure 5



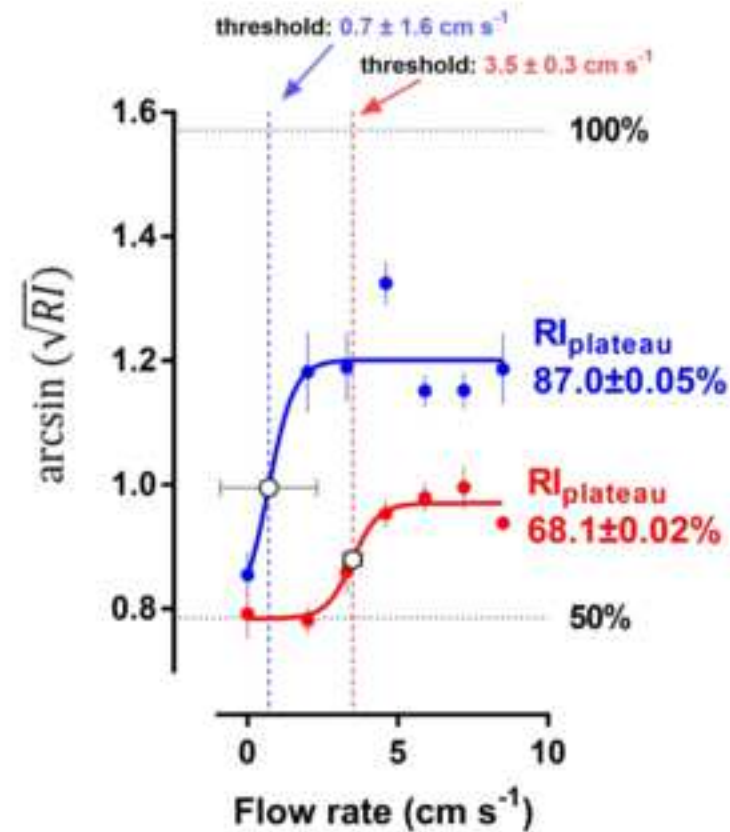
A

Proactive

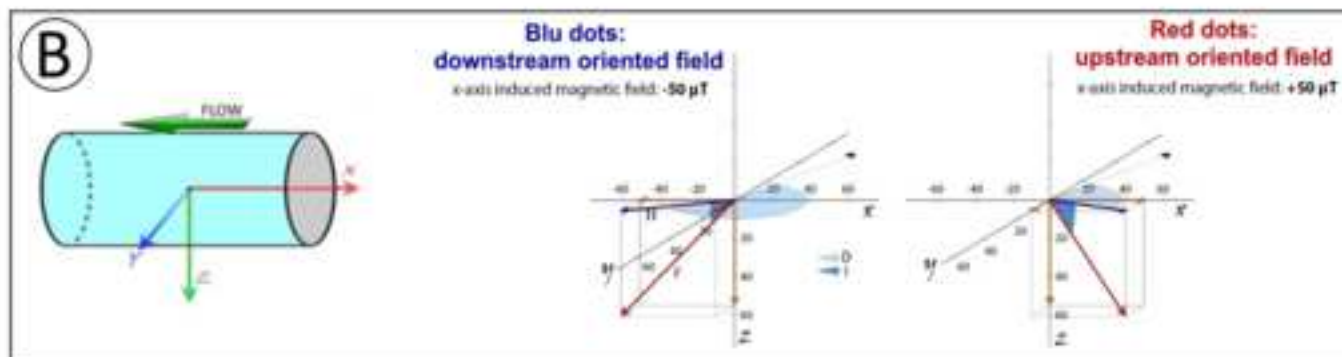
One curve for both the upstream oriented magnetic field (red dots) and downstream oriented magnetic field (blue dots) groups. No significant effect of magnetic field on the Rhetactic threshold.

**Reactive**

Separated curves for the upstream oriented magnetic field (red dots) and downstream oriented magnetic field (blue dots) groups. Significant effect of magnetic field on the Rhetactic threshold.



B



Name of Material/ Equipment	Company	Catalog Number
9500 G meter	FWBell	N/A
AD5755-1	Analog Devices	EVAL-AD5755SDZ
ALR3003D	ELC	3760244880031
BeagleBone Black	Beagleboard.org	N/A
Coil driver	Home made	N/A
Helmholtz pairs	Home made	N/A
HMC588L	Honeywell	900405 Rev E
MO99-2506	FWBell	129966
Swimming apparatus	M2M Engineering Custom Scientific Equipment	N/A
TECO 278	TECO	N/A

Comments/Description

Gaussmeter, DC-10 kHz; probe resolution: 0.01 μ T

Quad Channel, 16-bit, Digital to Analog Converter

DC Double Regulated power supply

Single Board Computer

Amplifier based on commercial OP (OPA544 by TI)

Coils made with standard AWG-14 wire

Digital three-axis magnetometer

Single axis magnetic probe

Swimming apparatus composed by peristaltic pump and SMC

Flow switch flowmeter with digital feedback

Thermo-cryostat



1 Alewife Center #200
Cambridge, MA 02140
tel. 617.945.9051
www.jove.com

ARTICLE AND VIDEO LICENSE AGREEMENT

Title of Article:	A behavioral protocol to assess the influence of personality on sensitivity to magnetic fields in zebrafish
Author(s):	Alessandro Cresci, Rosario De Rosa, Claudio Agnisola

Item 1: The Author elects to have the Materials be made available (as described at <http://www.jove.com/publish>) via:



Standard Access



Open Access

Item 2: Please select one of the following items:



The Author is **NOT** a United States government employee.



The Author is a United States government employee and the Materials were prepared in the course of his or her duties as a United States government employee.



The Author is a United States government employee but the Materials were NOT prepared in the course of his or her duties as a United States government employee.

ARTICLE AND VIDEO LICENSE AGREEMENT

1. **Defined Terms.** As used in this Article and Video License Agreement, the following terms shall have the following meanings: “**Agreement**” means this Article and Video License Agreement; “**Article**” means the article specified on the last page of this Agreement, including any associated materials such as texts, figures, tables, artwork, abstracts, or summaries contained therein; “**Author**” means the author who is a signatory to this Agreement; “**Collective Work**” means a work, such as a periodical issue, anthology or encyclopedia, in which the Materials in their entirety in unmodified form, along with a number of other contributions, constituting separate and independent works in themselves, are assembled into a collective whole; “**CRC License**” means the Creative Commons Attribution-Non Commercial-No Derivs 3.0 Unported Agreement, the terms and conditions of which can be found at: <http://creativecommons.org/licenses/by-nc-nd/3.0/legalcode>; “**Derivative Work**” means a work based upon the Materials or upon the Materials and other pre-existing works, such as a translation, musical arrangement, dramatization, fictionalization, motion picture version, sound recording, art reproduction, abridgment, condensation, or any other form in which the Materials may be recast, transformed, or adapted; “**Institution**” means the institution, listed on the last page of this Agreement, by which the Author was employed at the time of the creation of the Materials; “**JoVE**” means MyJoVE Corporation, a Massachusetts corporation and the publisher of The Journal of Visualized Experiments; “**Materials**” means the Article and / or the Video; “**Parties**” means the Author and JoVE; “**Video**” means any video(s) made by the Author, alone or in conjunction with any other parties, or by JoVE or its affiliates or agents, individually or in collaboration with the Author or any other parties, incorporating all or any portion

of the Article, and in which the Author may or may not appear.

2. **Background.** The Author, who is the author of the Article, in order to ensure the dissemination and protection of the Article, desires to have the JoVE publish the Article and create and transmit videos based on the Article. In furtherance of such goals, the Parties desire to memorialize in this Agreement the respective rights of each Party in and to the Article and the Video.

3. **Grant of Rights in Article.** In consideration of JoVE agreeing to publish the Article, the Author hereby grants to JoVE, subject to **Sections 4** and **7** below, the exclusive, royalty-free, perpetual (for the full term of copyright in the Article, including any extensions thereto) license (a) to publish, reproduce, distribute, display and store the Article in all forms, formats and media whether now known or hereafter developed (including without limitation in print, digital and electronic form) throughout the world, (b) to translate the Article into other languages, create adaptations, summaries or extracts of the Article or other Derivative Works (including, without limitation, the Video) or Collective Works based on all or any portion of the Article and exercise all of the rights set forth in (a) above in such translations, adaptations, summaries, extracts, Derivative Works or Collective Works and (c) to license others to do any or all of the above. The foregoing rights may be exercised in all media and formats, whether now known or hereafter devised, and include the right to make such modifications as are technically necessary to exercise the rights in other media and formats. If the “Open Access” box has been checked in **Item 1** above, JoVE and the Author hereby grant to the public all such rights in the Article as provided in, but subject to all limitations and requirements set forth in, the CRC License.

ARTICLE AND VIDEO LICENSE AGREEMENT

4. **Retention of Rights in Article.** Notwithstanding the exclusive license granted to JoVE in **Section 3** above, the Author shall, with respect to the Article, retain the non-exclusive right to use all or part of the Article for the non-commercial purpose of giving lectures, presentations or teaching classes, and to post a copy of the Article on the Institution's website or the Author's personal website, in each case provided that a link to the Article on the JoVE website is provided and notice of JoVE's copyright in the Article is included. All non-copyright intellectual property rights in and to the Article, such as patent rights, shall remain with the Author.

5. **Grant of Rights in Video – Standard Access.** This **Section 5** applies if the "Standard Access" box has been checked in **Item 1** above or if no box has been checked in **Item 1** above. In consideration of JoVE agreeing to produce, display or otherwise assist with the Video, the Author hereby acknowledges and agrees that, Subject to **Section 7** below, JoVE is and shall be the sole and exclusive owner of all rights of any nature, including, without limitation, all copyrights, in and to the Video. To the extent that, by law, the Author is deemed, now or at any time in the future, to have any rights of any nature in or to the Video, the Author hereby disclaims all such rights and transfers all such rights to JoVE.

6. **Grant of Rights in Video – Open Access.** This **Section 6** applies only if the "Open Access" box has been checked in **Item 1** above. In consideration of JoVE agreeing to produce, display or otherwise assist with the Video, the Author hereby grants to JoVE, subject to **Section 7** below, the exclusive, royalty-free, perpetual (for the full term of copyright in the Article, including any extensions thereto) license (a) to publish, reproduce, distribute, display and store the Video in all forms, formats and media whether now known or hereafter developed (including without limitation in print, digital and electronic form) throughout the world, (b) to translate the Video into other languages, create adaptations, summaries or extracts of the Video or other Derivative Works or Collective Works based on all or any portion of the Video and exercise all of the rights set forth in (a) above in such translations, adaptations, summaries, extracts, Derivative Works or Collective Works and (c) to license others to do any or all of the above. The foregoing rights may be exercised in all media and formats, whether now known or hereafter devised, and include the right to make such modifications as are technically necessary to exercise the rights in other media and formats. For any Video to which this **Section 6** is applicable, JoVE and the Author hereby grant to the public all such rights in the Video as provided in, but subject to all limitations and requirements set forth in, the CRC License.

7. **Government Employees.** If the Author is a United States government employee and the Article was prepared in the course of his or her duties as a United States government employee, as indicated in **Item 2** above, and any of the licenses or grants granted by the Author hereunder exceed the scope of the 17 U.S.C. 403, then the rights granted hereunder shall be limited to the maximum

rights permitted under such statute. In such case, all provisions contained herein that are not in conflict with such statute shall remain in full force and effect, and all provisions contained herein that do so conflict shall be deemed to be amended so as to provide to JoVE the maximum rights permissible within such statute.

8. **Protection of the Work.** The Author(s) authorize JoVE to take steps in the Author(s) name and on their behalf if JoVE believes some third party could be infringing or might infringe the copyright of either the Author's Article and/or Video.

9. **Likeness, Privacy, Personality.** The Author hereby grants JoVE the right to use the Author's name, voice, likeness, picture, photograph, image, biography and performance in any way, commercial or otherwise, in connection with the Materials and the sale, promotion and distribution thereof. The Author hereby waives any and all rights he or she may have, relating to his or her appearance in the Video or otherwise relating to the Materials, under all applicable privacy, likeness, personality or similar laws.

10. **Author Warranties.** The Author represents and warrants that the Article is original, that it has not been published, that the copyright interest is owned by the Author (or, if more than one author is listed at the beginning of this Agreement, by such authors collectively) and has not been assigned, licensed, or otherwise transferred to any other party. The Author represents and warrants that the author(s) listed at the top of this Agreement are the only authors of the Materials. If more than one author is listed at the top of this Agreement and if any such author has not entered into a separate Article and Video License Agreement with JoVE relating to the Materials, the Author represents and warrants that the Author has been authorized by each of the other such authors to execute this Agreement on his or her behalf and to bind him or her with respect to the terms of this Agreement as if each of them had been a party hereto as an Author. The Author warrants that the use, reproduction, distribution, public or private performance or display, and/or modification of all or any portion of the Materials does not and will not violate, infringe and/or misappropriate the patent, trademark, intellectual property or other rights of any third party. The Author represents and warrants that it has and will continue to comply with all government, institutional and other regulations, including, without limitation all institutional, laboratory, hospital, ethical, human and animal treatment, privacy, and all other rules, regulations, laws, procedures or guidelines, applicable to the Materials, and that all research involving human and animal subjects has been approved by the Author's relevant institutional review board.

11. **JoVE Discretion.** If the Author requests the assistance of JoVE in producing the Video in the Author's facility, the Author shall ensure that the presence of JoVE employees, agents or independent contractors is in accordance with the relevant regulations of the Author's institution. If more than one author is listed at the beginning of this Agreement, JoVE may, in its sole

ARTICLE AND VIDEO LICENSE AGREEMENT

discretion, elect not take any action with respect to the Article until such time as it has received complete, executed Article and Video License Agreements from each such author. JoVE reserves the right, in its absolute and sole discretion and without giving any reason therefore, to accept or decline any work submitted to JoVE. JoVE and its employees, agents and independent contractors shall have full, unfettered access to the facilities of the Author or of the Author's institution as necessary to make the Video, whether actually published or not. JoVE has sole discretion as to the method of making and publishing the Materials, including, without limitation, to all decisions regarding editing, lighting, filming, timing of publication, if any, length, quality, content and the like.

12. **Indemnification.** The Author agrees to indemnify JoVE and/or its successors and assigns from and against any and all claims, costs, and expenses, including attorney's fees, arising out of any breach of any warranty or other representations contained herein. The Author further agrees to indemnify and hold harmless JoVE from and against any and all claims, costs, and expenses, including attorney's fees, resulting from the breach by the Author of any representation or warranty contained herein or from allegations or instances of violation of intellectual property rights, damage to the Author's or the Author's institution's facilities, fraud, libel, defamation, research, equipment, experiments, property damage, personal injury, violations of institutional, laboratory, hospital, ethical, human and animal treatment, privacy or other rules, regulations, laws, procedures or guidelines, liabilities and other losses or damages related in any way to the submission of work to JoVE, making of videos by JoVE, or publication in JoVE or elsewhere by JoVE. The Author shall be responsible for, and shall hold JoVE harmless from, damages caused by lack of sterilization, lack of cleanliness or by contamination due to

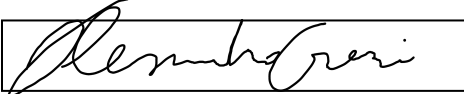
the making of a video by JoVE its employees, agents or independent contractors. All sterilization, cleanliness or decontamination procedures shall be solely the responsibility of the Author and shall be undertaken at the Author's expense. All indemnifications provided herein shall include JoVE's attorney's fees and costs related to said losses or damages. Such indemnification and holding harmless shall include such losses or damages incurred by, or in connection with, acts or omissions of JoVE, its employees, agents or independent contractors.

13. **Fees.** To cover the cost incurred for publication, JoVE must receive payment before production and publication of the Materials. Payment is due in 21 days of invoice. Should the Materials not be published due to an editorial or production decision, these funds will be returned to the Author. Withdrawal by the Author of any submitted Materials after final peer review approval will result in a US\$1,200 fee to cover pre-production expenses incurred by JoVE. If payment is not received by the completion of filming, production and publication of the Materials will be suspended until payment is received.

14. **Transfer, Governing Law.** This Agreement may be assigned by JoVE and shall inure to the benefits of any of JoVE's successors and assignees. This Agreement shall be governed and construed by the internal laws of the Commonwealth of Massachusetts without giving effect to any conflict of law provision thereunder. This Agreement may be executed in counterparts, each of which shall be deemed an original, but all of which together shall be deemed to be one and the same agreement. A signed copy of this Agreement delivered by facsimile, e-mail or other means of electronic transmission shall be deemed to have the same legal effect as delivery of an original signed copy of this Agreement.

A signed copy of this document must be sent with all new submissions. Only one Agreement is required per submission.

CORRESPONDING AUTHOR

Name:	Alessandro Cresci	
Department:	Ocean Sciences	
Institution:	Rosenstiel School of Marine and Atmospheric Sciences, University of Miami	
Title:	Master degree	
Signature:		Date: 10/9/2018

Please submit a **signed** and **dated** copy of this license by one of the following three methods:

1. Upload an electronic version on the JoVE submission site
2. Fax the document to +1.866.381.2236
3. Mail the document to JoVE / Attn: JoVE Editorial / 1 Alewife Center #200 / Cambridge, MA 02140

Replies to comments

We thank the editor for the helpful comments. We followed the comments step by step and modified the manuscript accordingly, especially the protocol section. We updated the order of the figures, which is now different compared to the previous version of the manuscript.

All the edits in the manuscript are visible as we left the option “Track changes” active in the .docx document.

Please find our replies to the comments in [blue](#).

Sincerely,

Alessandro Cresci

Editorial comments:

1. The editor has formatted the manuscript to match the journal's style, please retain the same.

[We retained the same format as the version of the manuscript provided by the editor.](#)

2. Please address all the specific comments marked in the manuscript.

[We addressed every comment we found in the manuscript. In case the comments from the editor are no longer visible it is because we had to erase that specific part of text. However, all the edits applied to the manuscript follow the instructions provided by the comments of the editor.](#)

3. The Protocol should contain only action items that direct the reader to do something. This can be in the form of discrete experimental steps, graphical user interface, the knob turns, button clicks, scripts if any, etc.

[The protocol now contains only short action items. All the additional information is provided in the introduction, the results or as NOTE.](#)

4. Please ensure that all text in the protocol section is written in the imperative tense as if telling someone how to do your experiment (e.g., “Do this,” “Ensure that,” etc.) with all specific details. The actions should be described in the imperative tense in complete sentences wherever possible.

[All the action items are now in imperative form.](#)

5. The Protocol should be made up almost entirely of discrete steps without large paragraphs of text between sections.

[We moved all the text between sections to the introduction, to the results or as a note.](#)

6. Please ensure you answer the “how” question, i.e., how is the step performed?

[We now answer to “how” in almost every step.](#)

7. Once done please ensure that the protocol is no more than 10 pages and highlighted step is no more than 2.75 pages including headings and spacing.

[The protocol is less than 10 pages and the highlighted text is 2 pages long.](#)

8. Please format all units as g/ml and not g ml⁻¹. Please change this for the figures as well.

We formatted all units accordingly.

SPRINGER NATURE LICENSE TERMS AND CONDITIONS

Dec 11, 2018

This Agreement between Rosenstiel School of Marine and Atmospheric Sciences - Alessandro Cresci ("You") and Springer Nature ("Springer Nature") consists of your license details and the terms and conditions provided by Springer Nature and Copyright Clearance Center.

License Number	4485980237161
License date	Dec 11, 2018
Licensed Content Publisher	Springer Nature
Licensed Content Publication	Acta ethologica
Licensed Content Title	Zebrafish "personality" influences sensitivity to magnetic fields
Licensed Content Author	Alessandro Cresci, Rosario De Rosa, Silvia Fraissinet et al
Licensed Content Date	Jan 1, 2018
Licensed Content Volume	21
Licensed Content Issue	3
Type of Use	Journal/Magazine
Requestor type	academic/university or research institute
Format	electronic
Portion	figures/tables/illustrations
Number of figures/tables/illustrations	1
Will you be translating?	no
Circulation/distribution	501 to 1000
Author of this Springer Nature content	yes
Title of new article	A behavioral protocol to assess the influence of personality on sensitivity to magnetic fields in zebrafish
Lead author	Alessandro Cresci
Title of targeted journal	Journal of Visualized Experiments
Publisher	JOVE
Expected publication date	Feb 2019

Portions Figure 1
Requestor Location Rosenstiel School of Marine and Atmospheric Sciences
4600 Rickenbacker Causeway

Billing Type KEY BISCAYNE, FL 33149
United States
Attn: Alessandro Cresci
Invoice

Billing Address Rosenstiel School of Marine and Atmospheric Sciences
4600 Rickenbacker Causeway

Total KEY BISCAYNE, FL 33149
United States
Attn: Alessandro Cresci
0.00 USD

Terms and Conditions

Springer Nature Terms and Conditions for RightsLink Permissions

Springer Nature Customer Service Centre GmbH (the Licensor) hereby grants you a non-exclusive, world-wide licence to reproduce the material and for the purpose and requirements specified in the attached copy of your order form, and for no other use, subject to the conditions below:

1. The Licensor warrants that it has, to the best of its knowledge, the rights to license reuse of this material. However, you should ensure that the material you are requesting is original to the Licensor and does not carry the copyright of another entity (as credited in the published version).

If the credit line on any part of the material you have requested indicates that it was reprinted or adapted with permission from another source, then you should also seek permission from that source to reuse the material.

2. Where **print only** permission has been granted for a fee, separate permission must be obtained for any additional electronic re-use.
3. Permission granted **free of charge** for material in print is also usually granted for any electronic version of that work, provided that the material is incidental to your work as a whole and that the electronic version is essentially equivalent to, or substitutes for, the print version.
4. A licence for 'post on a website' is valid for 12 months from the licence date. This licence does not cover use of full text articles on websites.

5. Where '**reuse in a dissertation/thesis**' has been selected the following terms apply: Print rights of the final author's accepted manuscript (for clarity, NOT the published version) for up to 100 copies, electronic rights for use only on a personal website or institutional repository as defined by the Sherpa guideline (www.sherpa.ac.uk/romeo/).
6. Permission granted for books and journals is granted for the lifetime of the first edition and does not apply to second and subsequent editions (except where the first edition permission was granted free of charge or for signatories to the STM Permissions Guidelines <http://www.stm-assoc.org/copyright-legal-affairs/permissions/permissions-guidelines/>), and does not apply for editions in other languages unless additional translation rights have been granted separately in the licence.
7. Rights for additional components such as custom editions and derivatives require additional permission and may be subject to an additional fee. Please apply to Journalpermissions@springernature.com/bookpermissions@springernature.com for these rights.
8. The Licensor's permission must be acknowledged next to the licensed material in print. In electronic form, this acknowledgement must be visible at the same time as the figures/tables/illustrations or abstract, and must be hyperlinked to the journal/book's homepage. Our required acknowledgement format is in the Appendix below.
9. Use of the material for incidental promotional use, minor editing privileges (this does not include cropping, adapting, omitting material or any other changes that affect the meaning, intention or moral rights of the author) and copies for the disabled are permitted under this licence.
10. Minor adaptations of single figures (changes of format, colour and style) do not require the Licensor's approval. However, the adaptation should be credited as shown in Appendix below.

Appendix — Acknowledgements:

For Journal Content:

Reprinted by permission from [**the Licensor**]: [**Journal Publisher** (e.g. Nature/Springer/Palgrave)] [**JOURNAL NAME**] [**REFERENCE CITATION**]
(Article name, Author(s) Name), [**COPYRIGHT**] (year of publication)

For Advance Online Publication papers:

Reprinted by permission from [**the Licensor**]: [**Journal Publisher** (e.g. Nature/Springer/Palgrave)] [**JOURNAL NAME**] [**REFERENCE CITATION**

(Article name, Author(s) Name), [COPYRIGHT] (year of publication), advance online publication, day month year (doi: 10.1038/sj.[JOURNAL ACRONYM].)

For Adaptations/Translations:

Adapted/Translated by permission from [the Licensor]: [Journal Publisher (e.g. Nature/Springer/Palgrave)] [JOURNAL NAME] [REFERENCE CITATION (Article name, Author(s) Name), [COPYRIGHT] (year of publication)

Note: For any republication from the British Journal of Cancer, the following credit line style applies:

Reprinted/adapted/translated by permission from [the Licensor]: on behalf of Cancer Research UK: : [Journal Publisher (e.g. Nature/Springer/Palgrave)] [JOURNAL NAME] [REFERENCE CITATION (Article name, Author(s) Name), [COPYRIGHT] (year of publication)

For Advance Online Publication papers:

Reprinted by permission from The [the Licensor]: on behalf of Cancer Research UK: [Journal Publisher (e.g. Nature/Springer/Palgrave)] [JOURNAL NAME] [REFERENCE CITATION (Article name, Author(s) Name), [COPYRIGHT] (year of publication), advance online publication, day month year (doi: 10.1038/sj.[JOURNAL ACRONYM])

For Book content:

Reprinted/adapted by permission from [the Licensor]: [Book Publisher (e.g. Palgrave Macmillan, Springer etc) [Book Title] by [Book author(s)] [COPYRIGHT] (year of publication)

Other Conditions:

Version 1.1

Questions? customercare@copyright.com or +1-855-239-3415 (toll free in the US) or +1-978-646-2777.