

Journal of Visualized Experiments

Assessment and characterization of hyaloid vessels in mice

--Manuscript Draft--

| | |
|--|---|
| Article Type: | Invited Methods Article - JoVE Produced Video |
| Manuscript Number: | JoVE59222R2 |
| Full Title: | Assessment and characterization of hyaloid vessels in mice |
| Keywords: | Eye, hyaloid vessels, vascular regression, flat mount, development, LRP5, Wnt |
| Corresponding Author: | Jing Chen Boston Children's Hospital, Harvard Medical School Boston, MA UNITED STATES |
| Corresponding Author's Institution: | Boston Children's Hospital, Harvard Medical School |
| Corresponding Author E-Mail: | Jing.Chen@childrens.harvard.edu |
| Order of Authors: | Zhongxiao Wang Chi-Hsiu Liu Shuo Huang Jing Chen |
| Additional Information: | |
| Question | Response |
| Please indicate whether this article will be Standard Access or Open Access. | Standard Access (US\$2,400) |
| Please indicate the city, state/province, and country where this article will be filmed . Please do not use abbreviations. | Boston, MA, USA |

TITLE:**Assessment and Characterization of Hyaloid Vessels in Mice****AUTHORS AND AFFILIATIONS:**

Zhongxiao Wang¹, Chi-Hsiu Liu¹, Shuo Huang¹, Jing Chen^{1,2}

¹Department of Ophthalmology, Boston Children's Hospital, Harvard Medical School, Boston, MA, USA

²The Manton Center for Orphan Disease Research, Boston Children's Hospital, Harvard Medical School, Boston, MA, USA

Corresponding Author:

Jing Chen (jing.chen@childrens.harvard.edu)

Email Addresses of Co-Authors:

Zhongxiao Wang (Zhongxiao.Wang@childrens.harvard.edu)

Chi-Hsiu Liu (Chi-hsiu.liu@childrens.harvard.edu)

Shuo Huang (Shuo.huang@childrens.harvard.edu)

KEYWORDS:

eye, hyaloid vessels, vascular regression, flat mount, development, LRP5, Wnt

SUMMARY:

This protocol describes both in vivo and ex vivo methods to fully visualize and characterize hyaloid vessels, a model of vascular regression in mouse eyes, using optical coherence tomography and fundus fluorescein angiography for the live imaging and ex vivo isolation and subsequent flat mount of hyaloid for quantitative analysis.

ABSTRACT:

In the eye, the embryonic hyaloid vessels nourish the developing lens and retina and regress when the retinal vessels develop. Persistent or failed regression of hyaloid vessels can be seen in diseases such as persistent hyperplastic primary vitreous (PHPV), leading to an obstructed light path and impaired visual function. Understanding the mechanisms underlying the hyaloid vessel regression may lead to new molecular insights into the vascular regression process and potential new ways to manage diseases with persistent hyaloid vessels. Here we describe the procedures for imaging hyaloid in live mice with optical coherence tomography (OCT) and fundus fluorescein angiography (FFA) and a detailed technical protocol of isolating and flat-mounting hyaloid ex vivo for quantitative analysis. Low-density lipoprotein receptor-related protein 5 (LRP5) knockout mice were used as an experimental model of persistent hyaloid vessels, to illustrate the techniques. Together, these techniques may facilitate a thorough assessment of hyaloid vessels as an experimental model of vascular regression and studies on the mechanism of persistent hyaloid vessels.

INTRODUCTION:

The blood supply in the eye is essential to ensure the normal development of the retina and surrounding ocular tissues and to equip a proper visual function. There are three vascular beds in the eye: the retinal vasculature, the choroid, and a transient embryonic circulatory network of hyaloid vessels. The development of the ocular vasculature requires spatial and temporal coordination throughout embryogenesis and tissue maturation. Among the three vascular beds, the hyaloid vasculature is the first functional blood supply system to provide nutrition and oxygen to the newly formed embryonic lens and the developing retina. Hyaloid vessels regress at the same time that the retina vasculatures develop and mature¹. The regression of hyaloid vasculature is pivotal to allow a clear visual pathway for the development of visual function; hence, this vascular regression process is as important as the growth of retinal vasculature. Impaired hyaloid regression may lead to eye diseases. Moreover, the regression of hyaloid vessels provides a model system to investigate the cellular and molecular mechanisms involved in the regulation of vascular regression, which may have implications for the angiogenic regulation in other organs as well.

The hyaloid vasculature, derived from the hyaloid artery (HA), is composed of vasa hyaloidea propria (VHP), tunica vasculosa lentis (TVL), and pupillary membrane (PM). It provides nourishment to the developing retina, the primary vitreous, and the lens during embryonic development². Arising from the HA, VHP branches anteriorly through the vitreous to the lens. The TVL cups the posterior surface of the lens capsule, and anastomoses to the PM, which connects to the anterior ciliary arteries, covering the anterior surface of the lens^{2,3}, resulting in the formation of a network of vessels in the PM³⁻⁵. Interestingly, there are no veins in the hyaloid vasculature, and the system makes use of choroidal veins to accomplish venous drainage.

In the human embryo, the hyaloid vasculature is nearly complete at approximately the ninth week of gestation and starts to regress when the first retinal vessels appear, during the fourth month of gestation². Beginning with atrophy of the VHP, regression of the capillary networks of the TVL, the PM, and lastly, the HA occurs subsequently^{2,3}. Meanwhile, the primary vitreous retracts and the secondary vitreous starts to form, composed of the extracellular matrix components, including collagen fibers. By the sixth month of gestation, the primary vitreous is reduced to a small transparent canal extending from the optic nerve disc to the lens, called the Cloquet's canal or hyaloid canal, and the secondary vitreous becomes the main component of the posterior segment^{2,3}. The hyaloid circulation vanishes mostly at 35 to 36 weeks of gestation, just before birth³.

Unlike humans, in whom hyaloid vasculature is completely regressed at birth, the mouse hyaloid vascular system starts to regress after birth. As the mouse retina is born avascular and retinal vessels develop postnatally, hyaloid vessels regress concurrently from postnatal day (P) 4 and are mostly completely regressed by P21⁶ (**Figure 1**). The PM disappears first between P10 and P12, and the VHP disappears between P12 and P16, while a small number of TVL and HA cells remain even at P16, and by P21 the hyaloid vascular system regression is almost complete⁶. In the meantime, retinal vasculature begins developing after birth. The superficial layer of vascular plexus fully extends to the peripheral retina at P7–P8, the deep layer (located in the outer plexiform layer) develops from P7–P12, and finally, the intermediate plexus in the inner plexiform

layer develops between P12 and P15⁷. As the retinal vasculature develops, it gradually replaces the function of concomitantly regressing hyaloid vessels, providing nutrition and oxygen to the developing eye. The postnatal occurrence of hyaloid vessel regression in mice provides an easily accessible experimental model to observe and study the hyaloid vasculature, as well as the molecular basis governing vascular regression processes under both physiological and pathological conditions⁸.

Failure of hyaloid regression can be seen in diseases such as PHPV, which is a rare congenital developmental anomaly of the eye resulting from a failed or incomplete regression of the embryological, primary vitreous and hyaloid vasculature⁹. The mechanisms regulating the regression process of hyaloid vasculature are complicated and broadly studied. One major molecular pathway essential for the normal regression of hyaloid vessels is the Wnt signaling pathway¹⁰, as genetic mutations in this pathway affecting both Wnt ligand and receptors have been linked with PHPV in humans⁹. Experimental studies identified a Wnt ligand, Wnt7b, which is produced by macrophages around hyaloid vessels in the developing eye to mediate this regression process. Wnt7b activates Wnt signaling by binding with the receptors frizzled4 (FZD4)/LRP5 in adjacent endothelial cells to initiate cell apoptosis, leading to the regression of hyaloid vessels¹⁰. As a result, *Wnt7b*-deficient mice show a persistence of hyaloid vessels¹⁰. Similarly, a nonconventional Wnt ligand, Norrin (encoded by the *Ndp* gene), also binds to FZD4/LRP5 to induce the hyaloid vessel regression during development. *Ndp*^{-/-}, *Lrp5*^{-/-}, and *Fzd4*^{-/-} mice all display postponed hyaloid vessel regression, supporting a critical regulatory role of Wnt signaling^{11–16}. Moreover, another Wnt coreceptor LRP6 overlaps with LRP5 in their function on modulating the Wnt signaling pathway in hyaloid vascular endothelial cells¹⁷. Other factors that may also contribute to hyaloid regression include the hypoxia-inducible factor^{18,19}, vascular endothelial growth factor^{20,21}, collagen-18^{22,23}, Arf²⁴, angiopoietin-2²⁵, and bone morphogenetic protein-4²⁶. In this paper, we use *Lrp5*^{-/-} mice as a model of persistent hyaloid vessels to demonstrate the techniques of assessing and characterizing hyaloid vasculature through both in vivo and ex vivo methods.

The visualization of hyaloid vasculature in vivo and ex vivo is essential for studying the mechanisms of hyaloid vessel regression. Current methods to observe hyaloid vasculature mainly focus on visualizing and analyzing the VHP and HA, through OCT and FFA images, eye cross sections, and the hyaloid flat mount. OCT and FFA are powerful in vivo imaging tools, allowing longitudinal observation in live animals after they have opened their eyes. Moreover, isolated hyaloid flat mount provides visualization of the whole hyaloid vasculature and a means to achieve an accurate quantification of the vessel numbers. Yet the delicate and fragile nature of hyaloid vessels and the resulting technical difficulties of its isolation may have limited its use in eye research somewhat^{10,17,27}. In this paper, we provide a detailed protocol of the visualization of hyaloid vessels, combining both in vivo live retinal imaging and ex vivo isolated hyaloid flat mount to enhance the feasibility of these techniques. This protocol has been adapted with modification and expansion from previous publications on the in vivo method of live fundus and OCT imaging²⁸ and the ex vivo method of isolated hyaloid flat mount¹¹.

PROTOCOL:

All animals were treated in accordance with the Association for Research in Vision and Ophthalmology (ARVO) Statement for the Use of Animals in Ophthalmic and Vision Research for animal experiments, following the Guidelines of the National Institutes of Health (NIH) regarding the care and use of animals for experimental procedures and the regulations set forth by the Institutional Animal Care and Use Committee (IACUC) at Boston Children's Hospital. *Lrp5*^{-/-} mice (stock no. 005823; Jackson Laboratory) and its wild-type (WT) control C57BL/6J mice (stock no. 000664; Jackson Laboratory) were used for this study.

1. Part I: In vivo imaging of hyaloid vessels using a rodent retinal imaging system

1.1. Preparation of the mice anesthesia and pupil dilation

1.1.1. Select the mice.

1.1.1.1. Use mice that are older than P12 (after they have opened their eyes) for retinal imaging; both sexes are suitable.

1.1.1.2. As desired, image mutant mice with delayed hyaloid regression (and their WT controls) throughout adulthood. WT mice older than 3 weeks may not exhibit much detectable remaining hyaloid vessels, hence P12–P21 is ideal for imaging remaining visible WT hyaloid.

1.1.2. Prepare a ketamine/xylazine mixture for anesthesia.

1.1.2.1. Take 2.3 mL of ketamine stock solution (100 mg/mL) and 0.7 mL of xylazine stock solution (20 mg/mL) and add 20 mL of sterile saline (0.9% sodium chloride) to make a working solution of a ketamine/xylazine mixture (10 mg/mL ketamine and 0.6 mg/mL xylazine).

1.1.3. Anesthetize the mice by intraperitoneally injecting ketamine/xylazine mixture in a volume of 8x the mouse's body weight (e.g., a 20 g mouse needs 160 µL of ketamine/xylazine working solution mixture to achieve a working dose of ketamine [80 mg/kg body weight] and xylazine [4.8 mg/kg body weight] mixture).

1.1.4. Apply one drop of pupil-dilating drug solution (see **Table of Materials**) to each eye to dilate the mouse's pupils immediately following anesthesia.

1.1.5. Assess the level of anesthesia by pedal reflex (firm hindlimb toe pinch). Wait until the mouse is sufficiently anesthetized (no pedal reflex) and its pupils are widely dilated.

1.2. Optical coherence tomography imaging of hyaloid vessels

1.2.1. Moisturize the mouse's corneas with artificial tears, and then, place the mouse on the positioning stage.

1.2.2. Gently contact the mouse's cornea with the lens of the OCT probe. Adjust the mouse and

probe so that the optic nerve head is in the center of the visual field in the fundus image, to guide the OCT imaging.

NOTE: For more details on the general setup of a rodent retinal imaging system (see **Table of Materials**) and adjusting the mouse's position, please refer to Gong et al.²⁸.

1.2.3. Adjust the focus to achieve the optimal images of OCT.

1.2.4. Adjust the angle of the indicated line in the OCT imaging software (see **Table of Materials**) to reveal persistent hyaloid vessels and, then, take images.

1.3. Fundus fluorescein angiography imaging of hyaloid vessels

1.3.1. Prepare a fluorescein solution: add 9 mL of sterile phosphate-buffered saline (PBS) to 1 mL of fluorescein solution (stock concentration: 100 mg/mL). The concentration of the final working solution is 10 mg/mL.

1.3.2. Intraperitoneally inject the fluorescein working solution (5 μ L/g body weight).

1.3.3. Moisturize the mouse's cornea with artificial tears, and then, place the mouse on the positioning stage.

1.3.4. Position the lens of the Micron IV retinal imaging microscope to make direct gentle contact with the mouse cornea. Adjust the alignment slightly to position the optic nerve head in the center of the view field.

1.3.5. Change the microscope filter to a green fluorescent channel.

1.3.6. Focus on persistent hyaloid vessels to take images.

1.3.7. Take multiple images after 1 min, 3 min, 5 min, and 10 min (no more than 10 min) post-injection to determine the best time point (signal-to-background ratio) for observing hyaloid vessels. Complete the FFA procedure within 10 min, after which the fluorescein may become too diffused and make vessels invisible.

1.4. Recovery of the mice from anesthesia

1.4.1. After the procedures, keep the mice on a warm heating pad.

1.4.2. Wait until the mice are mobile again to return them to the mouse cage.

2. Part II: Ex vivo visualization of hyaloid vessels

2.1. Preparation of fixed mouse eyes

221
222 2.1.1. Select mice of the right age.

223
224 NOTE: Neonatal mice are typically sacrificed at P8 for hyaloid dissection. Both sexes are suitable.
225 Mutant mice with a delayed hyaloid regression (and their respective WT controls) may be
226 dissected and analyzed throughout adulthood.

227
228 2.1.2. Euthanize the mice by exposure to CO₂.

229
230 2.1.3. Enucleate the mouse's eyes by blunt dissection.

231
232 2.1.4. Open the eyelids wide with microsurgery forceps to allow access to the eyeball. Place
233 curved microsurgery forceps under the globe in the orbit to grasp the optic nerve without
234 squeezing the eyeball. Gently pull and remove the eyeball with the forceps.

235
236 2.1.5. Alternatively, dissect the eyeball by using microsurgery scissors to carefully cut parallel to
237 the globe from the four sides toward the back of orbit and separating the globe from surrounding
238 connective tissues.

239
240 2.1.6. Immerse the eyes in 4% paraformaldehyde in PBS buffer for 30 min at room temperature
241 for fixation.

242
243 2.1.7. Transfer the fixed eyeballs to ice-cold PBS buffer.

244
245 NOTE: The eyeballs may be stored in PBS at 4 °C for up to 1 week.

246 247 **2.2. Embedding of hyaloid vessels with gelatin injection**

248
249 2.2.1. Prepare a 5% (w/v) gelatin solution.

250
251 2.2.1.1. Weigh out 50 mg of gelatin.

252
253 2.2.1.2. Dissolve the gelatin in 1 mL of distilled water.

254
255 2.2.1.3. Incubate the gelatin solution in a 37 °C water bath until fully dissolved. Keep the solution
256 in 37 °C water until use.

257
258 NOTE: A larger batch of solution may be prepared and stored at 4 °C as aliquots. Every time before
259 use, the solution needs to be warmed in 37 °C water bath to achieve a clear consistency.

260
261 2.2.2. Under a dissection microscope, inject 50 µL of gelatin solution into the vitreous body at
262 the limbus; repeat the injection 3x at different sites to make a total of four injections, evenly
263 spaced around the limbus (**Figure 2A**).

2.2.3. Incubate the eyeballs in a 4 °C refrigerator or on ice for 30 min to solidify the injected gelatin in the vitreous space.

2.3. Dissection and isolation of hyaloid vessels

NOTE: See **Figure 2B-E**.

2.3.1. Place the eyeballs in a Petri dish containing PBS to keep the tissue from drying. Make an incision with microsurgery scissors at the limbus and remove the cornea.

2.3.2. Snip and remove the optic nerve.

2.3.3. Under a dissection microscope, use two pairs of forceps to peel off and discard the sclera, choroid, and retinal pigment epithelium (RPE) layers and remove the iris.

2.3.4. With the optic-nerve side of the retina facing up and the lens side down, inject 50 μ L of PBS just beneath the retina cup to allow accumulation of the PBS buffer between the gelatinized vitreous body and the retina.

2.3.5. Gently peel off and remove the retina cup and ciliary body from the vitreous body with microsurgery forceps.

2.3.6. Turn the rest of the tissue (lens/hyaloid) over, so the lens side is facing up.

2.3.7. Lift the lens and gently loosen the connection between the lens/TVL and VHP, and then, cut the HA with microsurgery scissors to remove the lens-TVL. Keep the VHP-part of the hyaloid cup for the flat mount.

2.4. Flat mounting and staining of hyaloid vessels

2.4.1. Transfer the gelatin cup containing the hyaloid tissue immersed in PBS to a microscope slide, using a transfer pipette.

2.4.2. Gently rinse the hyaloid cup with PBS on the slide to remove all dissection debris.

2.4.3. Make sure the hyaloid cup is floating on the slide in adequate PBS solution.

2.4.4. Gently arrange and adjust the position of the gelatinized hyaloid cup with microsurgery forceps, with the rim of the cup facing down on the slide, to achieve optimal appearance after melting.

2.4.5. Place the slide with the hyaloid cup immersed in PBS onto a slide warmer at 37 °C, wait until the gelatin melts and the hyaloid flattens, and remove the slide when it is barely dry (do not over-dry).

2.4.6. (Optional) Immunostain the hyaloid vessels

2.4.6.1. Make blocking and penetrating buffer (e.g., 5% bovine serum albumin [BSA] and 0.1% Triton X-100 in PBS buffer). Add 50 μ L of blocking buffer onto a flat-mounted hyaloid isolation and incubate it at room temperature for 30 min.

2.4.6.2. Apply 50 μ L of primary antibody (e.g., CD31) (1:100 dilution in blocking buffer) onto a flat mount of hyaloid isolation, and then, incubate it in a wet box at 4 °C overnight.

2.4.6.3. Gently rinse 3x, for 5 min each time, with PBS.

2.4.6.4. Apply 50 μ L of secondary antibody (e.g., goat anti-rabbit secondary antibody-Alexa 488, 1:100 dilution) onto the hyaloid flat mount and incubate it at room temperature for 1 h.

2.4.6.5. Gently rinse 3x, for 5 min each time, with PBS.

2.4.7. Add a drop of anti-fade mounting medium with DAPI (4', 6-diamidino-2-phenylindole) to stain the nuclei in the hyaloid vessels.

2.4.8. Gently place a coverslip on the hyaloid to complete the flat mount.

2.5. Imaging and quantification of flat-mounted hyaloid vessels

2.5.1. Image the DAPI staining of hyaloid vessels with a fluorescent microscope and make sure the central HA is visible (exclude the samples without the HA).

2.5.2. Identify vessel branches directly derived from the HA and manually count the number of vessel branches for quantification.

2.6. Visualization of hyaloid vessels in the cross section of eyes

2.6.1. Embed fixed eyeballs into optimal cutting temperature compound in a suitable tissue mold, and then, freeze the embedded eyes on dry ice or store them in a -20 °C freezer.

2.6.2. Use a cryostat microtome to make a cross section of the embedded eyes into sections of 12 μ m thickness at -20 °C.

2.6.3. Collect the eye cross sections onto a microscope slide room temperature by gently touching the tissue sections, which will adhere to the slide.

2.6.4. Air-dry to dehydrate the tissue sections for ~30 min, which can then be stored in a -20 °C freezer until ready for staining.

2.6.5. Rinse the slide 1x with PBS to remove the remaining optimal cutting temperature compound on the slide.

2.6.6. (Optional) Immerse the slide into an appropriate fixative buffer (e.g., 4% paraformaldehyde in PBS) for 15 min at room temperature for additional fixation, if needed.

2.6.7. Permeabilize the tissue with 0.1% Triton X-100 in PBS for 30 min at room temperature.

2.6.8. Prepare isolectin-IB4 staining buffer for blood vessel staining.

2.6.9. Dissolve and reconstitute isolectin-IB4 (500 µg) powder with 50 mL of PBS in a 50 mL centrifuge tube.

2.6.10. Slowly add 50 µL of 1 M CaCl₂ solution, drop by drop, into the 50 mL of PBS/isolectin-IB4 mixture. This step needs to be performed slowly to avoid precipitation. The final concentration of CaCl₂ is 1 µM. The presence of Ca²⁺ is required for isolectin-IB4 staining.

2.6.11. Apply 30 µL of isolectin-IB4 staining buffer onto the eye cross sections on the slide and incubate it in a wet box at 4 °C overnight.

2.6.12. Rinse 3x, for 5 min each time, with PBS.

2.6.13. Add a drop of anti-fade mounting medium with DAPI to stain the nuclei in the sections.

2.6.14. Gently place a coverslip on the tissue sections to complete the flat mount.

2.6.15. Check the tissue under a microscope to visualize the presence of hyaloid vessels within the eyecup.

REPRESENTATIVE RESULTS:

In vivo imaging of hyaloid vessels in live mice

Figure 3A reveals cross-sectional views of OCT images for the retina and hyaloid tissues in 3-month-old WT and *Lrp5*^{-/-} mice, an animal model with persistent hyaloid. The WT eye shows the absence of hyaloid tissue, whereas the *Lrp5*^{-/-} eye shows two persistent hyaloid vessels derived from the optic nerve head. **Figure 3B** displays FFA images of persistent hyaloid vessels (green) in the fluorescent field in 6-week-old *Lrp5*^{-/-} mice. The WT mouse shows no remnant of hyaloid vessels, and the *Lrp5*^{-/-} mouse shows eight branches of hyaloid vessels in the vitreous body.

Ex vivo visualization of hyaloid vessels

Figure 4A,B demonstrates isolated hyaloid vessels as visualized in flat mounts, where vascular cells and associated macrophages were stained by their nuclei with DAPI staining (blue). The HA is at the center of each image, and hyaloid vessels are revealed by the DAPI-derived discontinuous lines. Each line represents one vessel of VHP. In *Lrp5*^{-/-} mice, higher numbers of

remaining hyaloid vessels were observed at P8 in flat mounts (**Figure 4A**). The WT mice had an average of 12 branches of hyaloid vessels at P8, whereas the age-matched *Lrp5*^{-/-} pups showed around 25 branches of hyaloid vessels, demonstrating a significantly impaired regression of hyaloid vasculature (**Figure 4B**). In addition, delayed and incomplete retina vascular development, another characteristic often associated with persistent hyaloid vessels, was also observed in the *Lrp5*^{-/-} pups (**Figure 4C,D**). **Figure 5** shows the remaining hyaloid vessels in cross sections of *Lrp5*^{-/-} eyes at P8, whereas the WT eyes do not display hyaloid vessels.

FIGURE AND TABLE LEGENDS:

Figure 1: Schematic diagram depicting the developmental regression of hyaloid vasculature in mouse eyes. Hyaloid vessels and branches, including VHP, TVL, and PM, are derived from the HA, and occupy much of the space between the lens and the immature retina at birth (P0). Hyaloid involution in mice starts with the regression of PM capillaries as early as P4. At P8, PM, VHP, and TVL layers are continuously regressing, coinciding with the complete formation of the superficial layer of the retinal vessels. By P12, the involution of the PM layer is complete, whereas the atrophy of VHP and TVL is still in progress. In the meantime, a deep layer of retinal vessels starts to form during P7–P12. By P16, the regression of the hyaloid system is partially completed (with the remaining TVL vessels and the HA left), and the intermediate layer of retinal vascular plexus continues to develop. The retinal vasculature is fully mature by P21 and takes over the role of nourishing retinal tissues from the hyaloid vessels, which are now mostly regressed. At P21, the vitreous, in the absence of hyaloid vessels, shows a clear visual pathway. Dashed red lines represent the regressing vessels. VHP = vasa hyaloidea propria; TVL = tunica vasculosa lentis; PM = pupillary membrane; HA = hyaloid artery.

Figure 2: Schematic diagram depicting the sequential procedure of hyaloid vessel isolation for ex vivo flat-mounting visualization. (A) Injection of gelatin into the enucleated eye through four injecting points (red dots) at the limbus, to solidify the vitreous body. (B) Removal of the cornea and optic nerve, careful dissection of the iris, and peeling off the sclera-choroid-RPE complex. (C) Flipping the remaining retinal cup with the lens to make the retina side face up; then, injecting PBS between the retina and the vitreous body to separate them, followed by peeling off the retinal layer. (D) Flipping upside down again the rest of the tissue, containing the lens with the surrounding hyaloid. Lifting the lens slightly to loosen the connection of TVL and VHP. (E) Cutting at the HA between the TVL and the VHP, and the removal of the lens and TVL. Flat-mounting VHP layer. VHP = vasa hyaloidea propria; TVL = tunica vasculosa lentis; PM = pupillary membrane; HA = hyaloid artery.

Figure 3: In vivo imaging of hyaloid vessels with optical coherence tomography (OCT) and fundus fluorescence angiography (FFA). A: Representative OCT images of WT and *Lrp5*^{-/-} mice at 3-month-old showing persistent hyaloid vessels in the vitreous space in *Lrp5*^{-/-} eyes. B: Representative FFA images of WT and *Lrp5*^{-/-} mice at 6-weeks-old. Mice were injected with 1mg fluorescein sodium in 0.1ml saline per mouse after anesthesia, and images were taken 5 min after injection, focused on hyaloid vessels in *Lrp5*^{-/-} mice or vitreous body in WT (in the absence of hyaloid vessels). Persistent hyaloid vessels were visualized in *Lrp5*^{-/-} but not WT eyes. Red arrows

indicate hyaloid vessels. Both scale bars: 100 μ m (A).

Figure 4: Visualization of delayed hyaloid vessel regression and delayed retinal vasculature development in *Lrp5*^{-/-} mice. (A) Representative images of flat-mounted hyaloid vessels stained with DAPI (blue) in WT and *Lrp5*^{-/-} eyes at P8. Arrows (white) indicate the hyaloid artery. (B) Quantification of the numbers of hyaloid vessels branching from the hyaloid artery in WT and *Lrp5*^{-/-} eyes. (C) Representative flat-mounted retinas stained with isolectin-IB4 (red) for the vasculature in WT and *Lrp5*^{-/-} eyes at P8. White dashed lines indicate the retina edge. Yellow lines indicate the vascularized area edge. (D) Quantification of vascular coverage of the superficial retinal vascular plexus in WT and *Lrp5*^{-/-} eyes. *n* = 8–12/group. The scale bars in panels A and C = 1 mm. Data are shown as mean \pm SEM. Two-tailed Student's *t*-test was used for statistical analysis. ***P* < 0.01. This figure is modified with permission from Wang et al.²⁷.

Figure 5: Visualization of hyaloid vessels in cross sections of *Lrp5*^{-/-} eyes. Representative images of cross sections of eyes isolated from WT and *Lrp5*^{-/-} mice at P8. The eyes were enucleated and embedded in optimal cutting temperature, and sections were cut using cryostat. The cross sections were stained with DAPI (blue) to show the nuclei and isolectin-IB4 (red) to show the blood vessels. White arrows indicate hyaloid vessels. The scale bar = 500 μ m. This figure is adapted with permission from Chen et al.¹⁶.

DISCUSSION:

Techniques to assess and characterize hyaloid vessels are intuitive and necessary procedures to observe the hyaloid vessel regression in animal models, to allow studies on the mechanisms underlying the vascular regression during development. While the in vivo retinal imaging allows the longitudinal observation of hyaloid regression in the same animal, access to a rodent fundus imaging system for OCT and FFA may be a limiting factor. In addition, in vivo imaging in live mice is not feasible before they open their eyes. Therefore, this methodology is not applicable during eye development in the neonatal stage. On the other hand, while imaging cross sections of isolated eyes may be used for any age of the mouse and has a low technical barrier, it is not quantitative when there are only a few visible hyaloid vessels, and the chance of obtaining an ideal image depends largely on the angle of sectioning (Figure 5). In comparison, the isolation of hyaloid vessels for flat mount visualization allows the complete imaging of the whole hyaloid vessel and accurate quantification, yet technical challenges may exist due to the delicate and fragile nature of hyaloid vessels. We hope the protocol detailed in this paper helps overcome these challenges.

Several critical steps in the hyaloid isolation protocol include the injection of the gelatin solution, the removal of the retina, and the final flat mounting. The technical difficulty of handling hyaloid vasculature lies in its delicate nature, the almost liquid-like state of vitreous where hyaloid vessels reside, and its close connection with the adjacent lens and the retina. Injecting gelatin solution intravitreally is key to solidifying the vitreous body containing hyaloid vessels and, thereby, making their texture firmer for easier dissection and handling. Gelatin is a gelling agent forming transparent elastic thermoreversible gels. By injecting the liquid form of gelatin (at room temperature or at 37 °C) into the vitreous space and cooling it to a lower temperature (4 °C), the

485 vitreous body transforms into a firmer gel cup. Performing multiple gelatin injections into the eye
486 allows the full dispersion of a sufficient amount of the gelatin into the vitreous space, to form a
487 uniform and round gelatinized hyaloid tissue cup. Another technical difficulty lies in removing the
488 retina without damaging hyaloid tissue. Unlike the choroid, which is relatively easy to dissect
489 apart, the gelatinized vitreous body containing hyaloid vessels is challenging to separate from the
490 nearby retina without damaging the hyaloid. We found that injecting PBS into the space between
491 the vitreous body and the retina generated a liquid buffer layer, making it much easier to
492 separate these two tissues. This is somewhat similar to the hydrodissection technique used in
493 cataract surgery to separate the capsule and the cataract cortex. The final flat mounting is the
494 last technically difficult step of the protocol. Warming the gelatinized hyaloid tissue in a PBS
495 droplet on a slide warmer converts it back to a more liquid-like form to allow easier flat mounting.
496 Proper arrangement and orientation of the hyaloid gel cup is still essential to ensure its even
497 flattening after melting and drying.

498
499 The protocol of isolating hyaloid vessels may be further modified in several ways. The
500 concentration of gelatin solution we used is 5%, yet higher or lower concentrations may also
501 work, depending on the preference of the researcher to achieve a firmer or softer texture for
502 handling. The DAPI staining of cellular nuclei may also be modified with isolectin-IB4 or other
503 endothelial cell or macrophage markers, to better distinguish vascular endothelial cells from
504 macrophages. A word of caution: the flat-mounted hyaloid vessels are very delicate and only
505 loosely adhered to the slide; hence, the hyaloid slides need to be handled very gently and
506 carefully if rinsing is needed during staining. This isolation protocol also has its limitations,
507 including the complexity of performing the fine dissection and the difficulty of the long-term
508 preservation of the samples due to the nature of the fragile tissue. Nevertheless, isolating and
509 flat-mounting hyaloid vessels is still the most comprehensive and intuitive way to study hyaloid
510 vasculature, to promote ocular and angiogenesis studies^{10,17,27,29–31}.

511
512 The hyaloid vasculature provides an excellent experimental model of studying developmental
513 vessel growth and regression, relevant for research fields in ophthalmology, angiogenesis, and
514 programmed cell death, with which this paper aims to assist. Future modifications of the isolation
515 protocol may be directed at improving the feasibility of a technical dissection procedure. Overall,
516 the combined in vivo imaging and ex vivo isolation of hyaloid vessels is an advantageous method
517 to allow the full assessment and characterization of hyaloid vessels in mice as a useful model of
518 vascular regression.

519 **ACKNOWLEDGMENTS:**

521 This work was supported by National Institutes of Health (NIH) grants (R01 EY024963 and
522 EY028100) to J.C. Z.W. was supported by a Knights Templar Eye Foundation Career Starter Grant.
523 The hyaloid isolation procedure described in this study was adapted with modification from
524 protocols generously shared by Drs. Richard Lang, Toshihide Kurihara, and Lois Smith, to whom
525 the authors are thankful.

526 **DISCLOSURES:**

527 The authors have nothing to disclose.
528

529

530 **REFERENCES:**

- 531 1. Lutty, G. A., McLeod, D. S. Development of the hyaloid, choroidal and retinal vasculatures in
532 the fetal human eye. *Progress in Retinal and Eye Research*. **62**, 58-76,
533 doi:10.1016/j.preteyeres.2017.10.001 (2018).
- 534 2. Anand-Apte, B., Hollyfield, J. Developmental anatomy of the retinal and choroidal vasculature.
535 In *The Retina and its Disorders*. Edited by Joseph Besharse, D. B., Academic Press. Oxford, UK
536 (2011).
- 537 3. Hobbs, R. P., Hartnett, M. E. Chapter 2: The hyaloidal vasculature and its role in development,
538 In *Pediatric Retina: Second Edition*. Edited by Hartnett, M. E., Lippincott Williams & Wilkins,
539 Philadelphia (2013).
- 540 4. Fruttiger, M. Development of the retinal vasculature. *Angiogenesis*. **10** (2), 77-88,
541 doi:10.1007/s10456-007-9065-1 (2007).
- 542 5. Saint-Geniez, M., D'Amore, P. A. Development and pathology of the hyaloid, choroidal and
543 retinal vasculature. *The International Journal of Developmental Biology*. **48** (8-9), 1045-1058,
544 doi:10.1387/ijdb.041895ms (2004).
- 545 6. Ito, M., Yoshioka, M. Regression of the hyaloid vessels and pupillary membrane of the mouse.
546 *Anatomy and Embryology*. **200** (4), 403-411 (1999).
- 547 7. Stahl, A. et al. The mouse retina as an angiogenesis model. *Investigative Ophthalmology &*
548 *Visual Science*. **51** (6), 2813-2826, doi:10.1167/iovs.10-5176 (2010).
- 549 8. Liu, C. H., Wang, Z., Sun, Y., Chen, J. Animal models of ocular angiogenesis: from development
550 to pathologies. *FASEB Journal*. **31** (11), 4665-4681, doi:10.1096/fj.201700336R (2017).
- 551 9. Shastri, B. S. Persistent hyperplastic primary vitreous: congenital malformation of the eye.
552 *Clinical & Experimental Ophthalmology*. **37** (9), 884-890, doi:10.1111/j.1442-9071.2009.02150.x
553 (2009).
- 554 10. Lobov, I. B. et al. WNT7b mediates macrophage-induced programmed cell death in patterning
555 of the vasculature. *Nature*. **437** (7057), 417-421, doi:10.1038/nature03928 (2005).
- 556 11. Kato, M. et al. Cbfa1-independent decrease in osteoblast proliferation, osteopenia, and
557 persistent embryonic eye vascularization in mice deficient in Lrp5, a Wnt coreceptor. *The Journal*
558 *of Cell Biology*. **157** (2), 303-314 (2002).
- 559 12. Xia, C. H. et al. A model for familial exudative vitreoretinopathy caused by LPR5 mutations.
560 *Human Molecular Genetics*. **17** (11), 1605-1612, doi:10.1093/hmg/ddn047 (2008).
- 561 13. Xu, Q. et al. Vascular development in the retina and inner ear: control by Norrin and Frizzled-
562 4, a high-affinity ligand-receptor pair. *Cell*. **116** (6), 883-895 (2004).
- 563 14. Ye, X. et al. Norrin, frizzled-4, and Lrp5 signaling in endothelial cells controls a genetic program
564 for retinal vascularization. *Cell*. **139** (2), 285-298 (2009).
- 565 15. Ohlmann, A. V., Adamek, E., Ohlmann, A., Lutjen-Drecoll, E. Norrie gene product is necessary
566 for regression of hyaloid vessels. *Investigative Ophthalmology & Visual Science*. **45** (7), 2384-2390
567 (2004).
- 568 16. Chen, J. et al. Retinal expression of Wnt-pathway mediated genes in low-density lipoprotein
569 receptor-related protein 5 (Lrp5) knockout mice. *PLoS One*. **7** (1), e30203,
570 doi:10.1371/journal.pone.0030203 (2012).
- 571 17. Nayak, G. et al. Developmental vascular regression is regulated by a Wnt/beta-catenin, MYC
572 and CDKN1A pathway that controls cell proliferation and cell death. *Development*. **145** (12),

doi:10.1242/dev.154898 (2018).

18. Kurihara, T. et al. Astrocyte pVHL and HIF- α isoforms are required for embryonic-to-adult vascular transition in the eye. *The Journal of Cell Biology*. **195** (4), 689-701, doi:10.1083/jcb.201107029 (2011).

19. Huang, T. Q. et al. Deletion of HIF-1 α partially rescues the abnormal hyaloid vascular system in Cited2 conditional knockout mouse eyes. *Molecular Vision*. **18**, 1260-1270 (2012).

20. Yoshikawa, Y. et al. Developmental regression of hyaloid vasculature is triggered by neurons. *The Journal of Experimental Medicine*. **213** (7), 1175-1183, doi:10.1084/jem.20151966 (2016).

21. Garcia, C. M. et al. The function of VEGF-A in lens development: formation of the hyaloid capillary network and protection against transient nuclear cataracts. *Experimental Eye Research*. **88** (2), 270-276, doi:10.1016/j.exer.2008.07.017 (2009).

22. Hurskainen, M. et al. Abnormal maturation of the retinal vasculature in type XVIII collagen/endostatin deficient mice and changes in retinal glial cells due to lack of collagen types XV and XVIII. *FASEB journal*. **19** (11), 1564-1566, doi:10.1096/fj.04-3101fje (2005).

23. Fukai, N. et al. Lack of collagen XVIII/endostatin results in eye abnormalities. *The EMBO Journal*. **21** (7), 1535-1544, doi:10.1093/emboj/21.7.1535 (2002).

24. McKeller, R. N. et al. The Arf tumor suppressor gene promotes hyaloid vascular regression during mouse eye development. *Proceedings of the National Academy of Sciences of the United States of America*. **99** (6), 3848-3853, doi:10.1073/pnas.052484199 (2002).

25. Hackett, S. F., Wiegand, S., Yancopoulos, G., Campochiaro, P. A. Angiopoietin-2 plays an important role in retinal angiogenesis. *Journal of Cellular Physiology*. **192** (2), 182-187, doi:10.1002/jcp.10128 (2002).

26. Chang, B. et al. Haploinsufficient Bmp4 ocular phenotypes include anterior segment dysgenesis with elevated intraocular pressure. *BMC Genetics*. **2**, 18 (2001).

27. Wang, Z. et al. Pharmacologic Activation of Wnt Signaling by Lithium Normalizes Retinal Vasculature in a Murine Model of Familial Exudative Vitreoretinopathy. *The American Journal of Pathology*. **186** (10), 2588-2600, doi:10.1016/j.ajpath.2016.06.015 (2016).

28. Gong, Y. et al. Optimization of an Image-Guided Laser-Induced Choroidal Neovascularization Model in Mice. *PLoS One*. **10** (7), e0132643, doi:10.1371/journal.pone.0132643 (2015).

29. Kishimoto, A. et al. Histochemical characteristics of regressing vessels in the hyaloid vascular system of neonatal mice: Novel implication for vascular atrophy. *Experimental Eye Research*. **172**, 1-9, doi:10.1016/j.exer.2018.03.024 (2018).

30. Lang, R. A., Bishop, J. M. Macrophages are required for cell death and tissue remodeling in the developing mouse eye. *Cell*. **74** (3), 453-462 (1993).

31. Riazifar, H. et al. Phenotypic and functional characterization of Bst $^{+/-}$ mouse retina. *Disease Models & Mechanisms*. **8** (8), 969-976, doi:10.1242/dmm.018176 (2015).

Figure 1

[Click here to access/download;Figure;Fig 1.pdf](#)

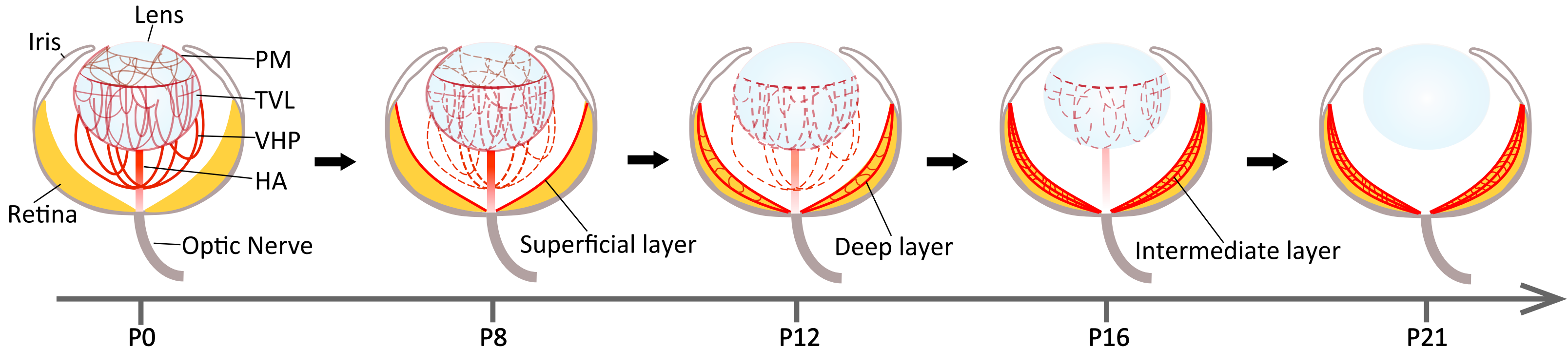


Figure 2

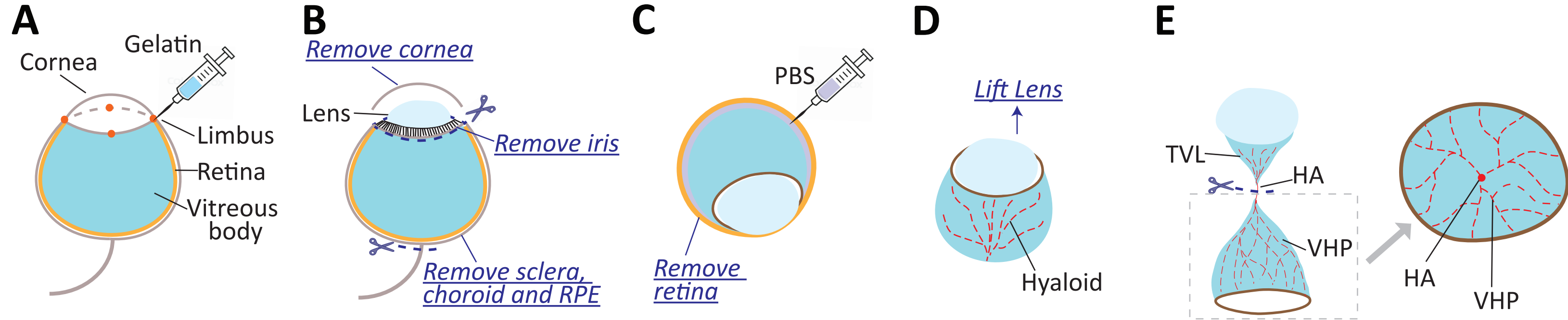


Figure 3

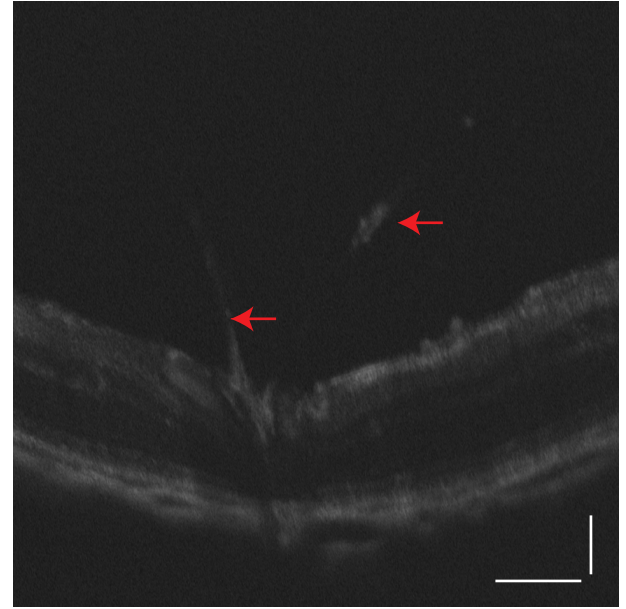
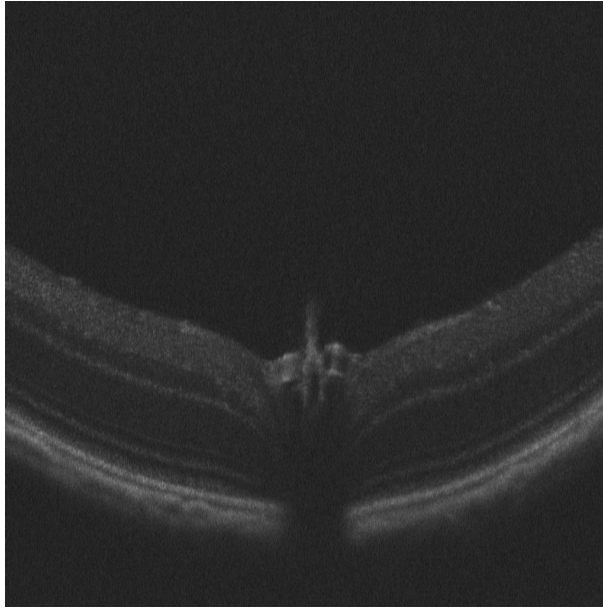
[Click here to access/download;Figure;Fig 3.pdf](#)

A

WT

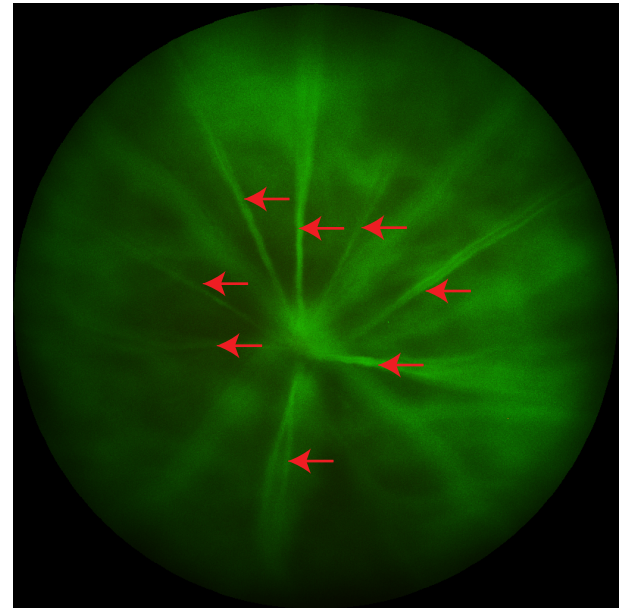
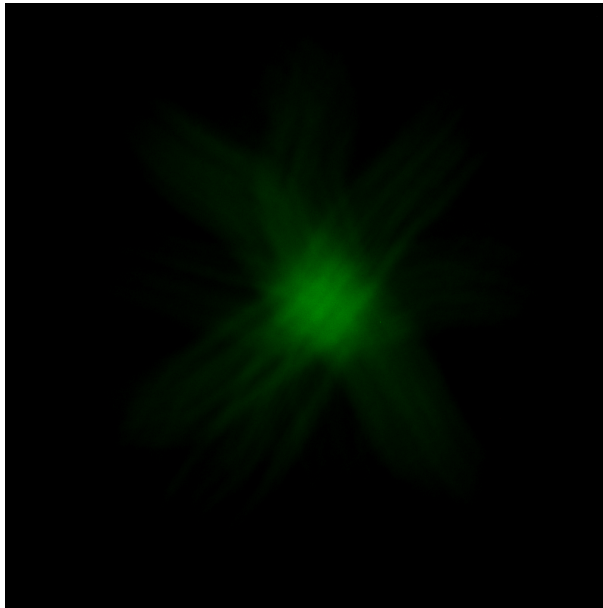
Lrp5^{-/-}

OCT



B

FFA

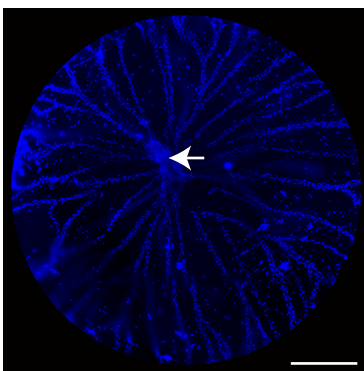
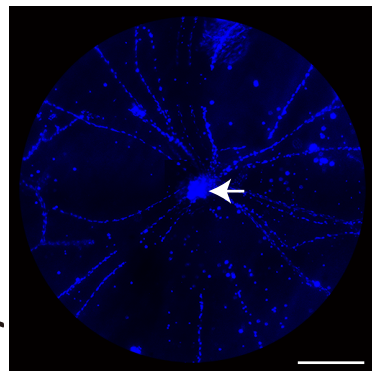


A

Hyaloid vessels

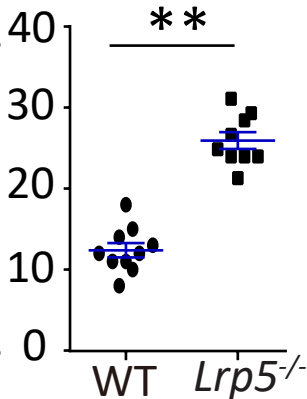
WT

Lrp5^{-/-}



B

Hyaloid vessels/eye

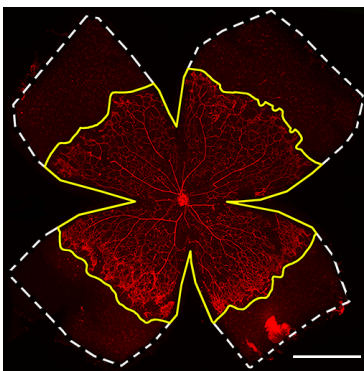
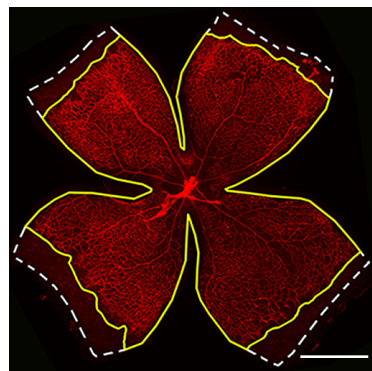


C

Whole retina

WT

Lrp5^{-/-}



D

Vascularized area /retina

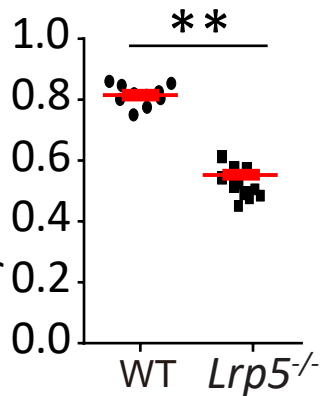
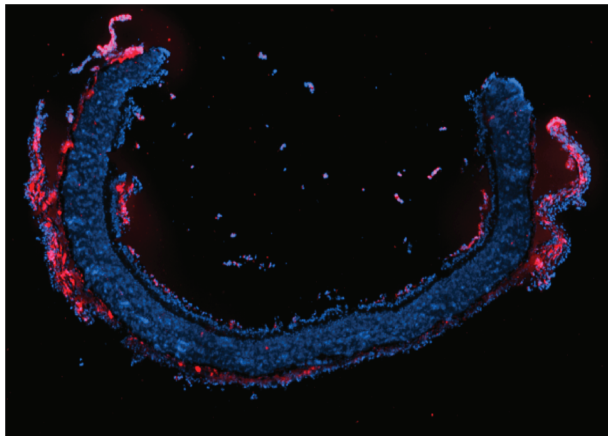


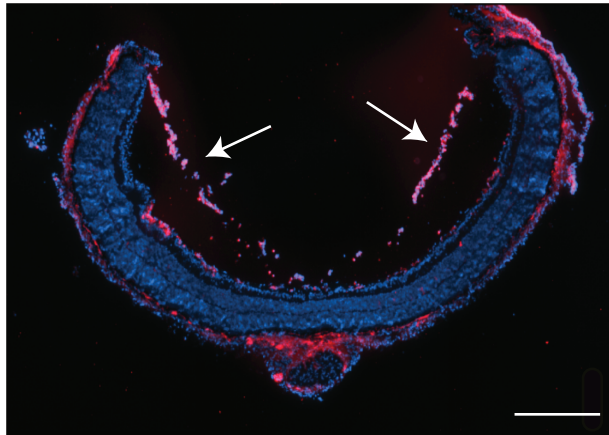
Figure 5

[Click here to access/download;Figure;Fig 5.pdf](#) 

WT



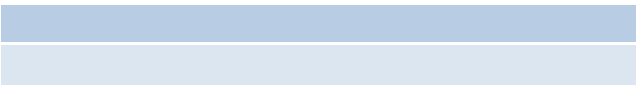
Lrp5^{-/-}



| Name of Material/ Equipment | Company | Catalog Number |
|---|------------------------------|------------------|
| AK-Fluor (fluorescein injection, USP) | Akorn | 17478-253-10 |
| Anti-CD31 antibody | Abcam | ab28364 |
| Antifade mounting medium | Thermo Fisher | S2828 |
| Antifade Mounting Medium with DAPI | Vector Laboratories | H-1200 |
| Artificial tear eyedrop | Systane | N/A |
| Bovine serum albumin (BSA) | Sigma-Aldrich | A2058 |
| C57BL/6J mice | The Jackson Laboratory | Stock NO: 000664 |
| Calcium chloride (CaCl ₂) | Sigma-Aldrich | C1016 |
| Cryostat | Leica | CM3050S |
| Cryostat | Leica | CM3050 S |
| Cyclopentolate hydrochloride and phenylephrine hydrochloride eyedrop | Cyclomydril | N/A |
| Gelatin | Sigma-Aldrich | G9382 |
| Goat anti-Rabbit IgG (H+L) Cross-Adsorbed Secondary Antibody, Alexa Fluor 488 | ThermoFisher Scientific | A-11008 |
| Heating board | Lab-Line Instruments Inc. | N/A |
| Isolectin GS-IB4, 594 conjugate | ThermoFisher Scientific | I21413 |
| Ketamine hydrochloride injection | KetaVed | NDC 50989-996-06 |
| <i>Lrp5</i> ^{-/-} mice | The Jackson Laboratory | Stock NO. 005823 |
| Micron IV and OCT | Phoenix Research Labs | N/A |
| Microscope | Zeiss | discovery v8 |
| Microsurgery forceps | Scanlan International | 4004-05 |
| Microsurgery scissors | Scanlan International | 6006-44 |
| Optimal cutting temperature compound | Tissue-Tek | 4583 |
| Optimal cutting temperature compound | Agar Scientific | AGR1180 |
| Paraformaldehyde (16%) | Electron Microscopy Sciences | 15710 |
| Peel-A-Way disposable embedding molds (tissue molds) | Fisher Scientific | 12-20 |
| Phosphate-buffered saline (PBS) buffer (10X) | Teknova | P0496 |
| Slide cover glass | Premiere | 94-2222-10 |
| Superfrost microscope slides | Fisherbrand | 12-550-15 |

| | | |
|---------------------------|---------------|-------------------|
| Triton X-100 | Sigma-Aldrich | X100 |
| Xylazine sterile solution | Akorn: AnaSed | NDC: 59399-110-20 |

[illegible]



ARTICLE AND VIDEO LICENSE AGREEMENT

| | |
|-------------------|--|
| Title of Article: | Assessment and characterization of hyaloid vessels in mice: a model of vascular regression |
| Author(s): | Zhongxiao Wang, Chi-Hsiu Liu, Shuo Huang, Jing Chen |

Item 1: The Author elects to have the Materials be made available (as described at <http://www.jove.com/publish>) via:

☒

Standard Access

☐

Open Access

Item 2: Please select one of the following items:

☒

The Author is **NOT** a United States government employee.

☐

The Author is a United States government employee and the Materials were prepared in the course of his or her duties as a United States government employee.

☐

The Author is a United States government employee but the Materials were NOT prepared in the course of his or her duties as a United States government employee.

ARTICLE AND VIDEO LICENSE AGREEMENT

1. **Defined Terms.** As used in this Article and Video License Agreement, the following terms shall have the following meanings: **"Agreement"** means this Article and Video License Agreement; **"Article"** means the article specified on the last page of this Agreement, including any associated materials such as texts, figures, tables, artwork, abstracts, or summaries contained therein; **"Author"** means the author who is a signatory to this Agreement; **"Collective Work"** means a work, such as a periodical issue, anthology or encyclopedia, in which the Materials in their entirety in unmodified form, along with a number of other contributions, constituting separate and independent works in themselves, are assembled into a collective whole; **"CRC License"** means the Creative Commons Attribution-Non Commercial-No Derivs 3.0 Unported Agreement, the terms and conditions of which can be found at: <http://creativecommons.org/licenses/by-nc-nd/3.0/legalcode>; **"Derivative Work"** means a work based upon the Materials or upon the Materials and other pre-existing works, such as a translation, musical arrangement, dramatization, fictionalization, motion picture version, sound recording, art reproduction, abridgment, condensation, or any other form in which the Materials may be recast, transformed, or adapted; **"Institution"** means the institution, listed on the last page of this Agreement, by which the Author was employed at the time of the creation of the Materials; **"JoVE"** means MyJoVE Corporation, a Massachusetts corporation and the publisher of The Journal of Visualized Experiments; **"Materials"** means the Article and / or the Video; **"Parties"** means the Author and JoVE; **"Video"** means any video(s) made by the Author, alone or in conjunction with any other parties, or by JoVE or its affiliates or agents, individually or in collaboration with the Author or any other parties, incorporating all or any portion

of the Article, and in which the Author may or may not appear.

2. **Background.** The Author, who is the author of the Article, in order to ensure the dissemination and protection of the Article, desires to have the JoVE publish the Article and create and transmit videos based on the Article. In furtherance of such goals, the Parties desire to memorialize in this Agreement the respective rights of each Party in and to the Article and the Video.

3. **Grant of Rights in Article.** In consideration of JoVE agreeing to publish the Article, the Author hereby grants to JoVE, subject to **Sections 4** and **7** below, the exclusive, royalty-free, perpetual (for the full term of copyright in the Article, including any extensions thereto) license (a) to publish, reproduce, distribute, display and store the Article in all forms, formats and media whether now known or hereafter developed (including without limitation in print, digital and electronic form) throughout the world, (b) to translate the Article into other languages, create adaptations, summaries or extracts of the Article or other Derivative Works (including, without limitation, the Video) or Collective Works based on all or any portion of the Article and exercise all of the rights set forth in (a) above in such translations, adaptations, summaries, extracts, Derivative Works or Collective Works and (c) to license others to do any or all of the above. The foregoing rights may be exercised in all media and formats, whether now known or hereafter devised, and include the right to make such modifications as are technically necessary to exercise the rights in other media and formats. If the "Open Access" box has been checked in **Item 1** above, JoVE and the Author hereby grant to the public all such rights in the Article as provided in, but subject to all limitations and requirements set forth in, the CRC License.

ARTICLE AND VIDEO LICENSE AGREEMENT

4. **Retention of Rights in Article.** Notwithstanding the exclusive license granted to JoVE in **Section 3** above, the Author shall, with respect to the Article, retain the non-exclusive right to use all or part of the Article for the non-commercial purpose of giving lectures, presentations or teaching classes, and to post a copy of the Article on the Institution's website or the Author's personal website, in each case provided that a link to the Article on the JoVE website is provided and notice of JoVE's copyright in the Article is included. All non-copyright intellectual property rights in and to the Article, such as patent rights, shall remain with the Author.

5. **Grant of Rights in Video – Standard Access.** This **Section 5** applies if the "Standard Access" box has been checked in **Item 1** above or if no box has been checked in **Item 1** above. In consideration of JoVE agreeing to produce, display or otherwise assist with the Video, the Author hereby acknowledges and agrees that, Subject to **Section 7** below, JoVE is and shall be the sole and exclusive owner of all rights of any nature, including, without limitation, all copyrights, in and to the Video. To the extent that, by law, the Author is deemed, now or at any time in the future, to have any rights of any nature in or to the Video, the Author hereby disclaims all such rights and transfers all such rights to JoVE.

6. **Grant of Rights in Video – Open Access.** This **Section 6** applies only if the "Open Access" box has been checked in **Item 1** above. In consideration of JoVE agreeing to produce, display or otherwise assist with the Video, the Author hereby grants to JoVE, subject to **Section 7** below, the exclusive, royalty-free, perpetual (for the full term of copyright in the Article, including any extensions thereto) license (a) to publish, reproduce, distribute, display and store the Video in all forms, formats and media whether now known or hereafter developed (including without limitation in print, digital and electronic form) throughout the world, (b) to translate the Video into other languages, create adaptations, summaries or extracts of the Video or other Derivative Works or Collective Works based on all or any portion of the Video and exercise all of the rights set forth in (a) above in such translations, adaptations, summaries, extracts, Derivative Works or Collective Works and (c) to license others to do any or all of the above. The foregoing rights may be exercised in all media and formats, whether now known or hereafter devised, and include the right to make such modifications as are technically necessary to exercise the rights in other media and formats. For any Video to which this **Section 6** is applicable, JoVE and the Author hereby grant to the public all such rights in the Video as provided in, but subject to all limitations and requirements set forth in, the CRC License.

7. **Government Employees.** If the Author is a United States government employee and the Article was prepared in the course of his or her duties as a United States government employee, as indicated in **Item 2** above, and any of the licenses or grants granted by the Author hereunder exceed the scope of the 17 U.S.C. 403, then the rights granted hereunder shall be limited to the maximum

rights permitted under such statute. In such case, all provisions contained herein that are not in conflict with such statute shall remain in full force and effect, and all provisions contained herein that do so conflict shall be deemed to be amended so as to provide to JoVE the maximum rights permissible within such statute.

8. **Protection of the Work.** The Author(s) authorize JoVE to take steps in the Author(s) name and on their behalf if JoVE believes some third party could be infringing or might infringe the copyright of either the Author's Article and/or Video.

9. **Likeness, Privacy, Personality.** The Author hereby grants JoVE the right to use the Author's name, voice, likeness, picture, photograph, image, biography and performance in any way, commercial or otherwise, in connection with the Materials and the sale, promotion and distribution thereof. The Author hereby waives any and all rights he or she may have, relating to his or her appearance in the Video or otherwise relating to the Materials, under all applicable privacy, likeness, personality or similar laws.

10. **Author Warranties.** The Author represents and warrants that the Article is original, that it has not been published, that the copyright interest is owned by the Author (or, if more than one author is listed at the beginning of this Agreement, by such authors collectively) and has not been assigned, licensed, or otherwise transferred to any other party. The Author represents and warrants that the author(s) listed at the top of this Agreement are the only authors of the Materials. If more than one author is listed at the top of this Agreement and if any such author has not entered into a separate Article and Video License Agreement with JoVE relating to the Materials, the Author represents and warrants that the Author has been authorized by each of the other such authors to execute this Agreement on his or her behalf and to bind him or her with respect to the terms of this Agreement as if each of them had been a party hereto as an Author. The Author warrants that the use, reproduction, distribution, public or private performance or display, and/or modification of all or any portion of the Materials does not and will not violate, infringe and/or misappropriate the patent, trademark, intellectual property or other rights of any third party. The Author represents and warrants that it has and will continue to comply with all government, institutional and other regulations, including, without limitation all institutional, laboratory, hospital, ethical, human and animal treatment, privacy, and all other rules, regulations, laws, procedures or guidelines, applicable to the Materials, and that all research involving human and animal subjects has been approved by the Author's relevant institutional review board.

11. **JoVE Discretion.** If the Author requests the assistance of JoVE in producing the Video in the Author's facility, the Author shall ensure that the presence of JoVE employees, agents or independent contractors is in accordance with the relevant regulations of the Author's institution. If more than one author is listed at the beginning of this Agreement, JoVE may, in its sole

ARTICLE AND VIDEO LICENSE AGREEMENT

discretion, elect not take any action with respect to the Article until such time as it has received complete, executed Article and Video License Agreements from each such author. JoVE reserves the right, in its absolute and sole discretion and without giving any reason therefore, to accept or decline any work submitted to JoVE. JoVE and its employees, agents and independent contractors shall have full, unfettered access to the facilities of the Author or of the Author's institution as necessary to make the Video, whether actually published or not. JoVE has sole discretion as to the method of making and publishing the Materials, including, without limitation, to all decisions regarding editing, lighting, filming, timing of publication, if any, length, quality, content and the like.

12. **Indemnification.** The Author agrees to indemnify JoVE and/or its successors and assigns from and against any and all claims, costs, and expenses, including attorney's fees, arising out of any breach of any warranty or other representations contained herein. The Author further agrees to indemnify and hold harmless JoVE from and against any and all claims, costs, and expenses, including attorney's fees, resulting from the breach by the Author of any representation or warranty contained herein or from allegations or instances of violation of intellectual property rights, damage to the Author's or the Author's institution's facilities, fraud, libel, defamation, research, equipment, experiments, property damage, personal injury, violations of institutional, laboratory, hospital, ethical, human and animal treatment, privacy or other rules, regulations, laws, procedures or guidelines, liabilities and other losses or damages related in any way to the submission of work to JoVE, making of videos by JoVE, or publication in JoVE or elsewhere by JoVE. The Author shall be responsible for, and shall hold JoVE harmless from, damages caused by lack of sterilization, lack of cleanliness or by contamination due to


the making of a video by JoVE its employees, agents or independent contractors. All sterilization, cleanliness or decontamination procedures shall be solely the responsibility of the Author and shall be undertaken at the Author's expense. All indemnifications provided herein shall include JoVE's attorney's fees and costs related to said losses or damages. Such indemnification and holding harmless shall include such losses or damages incurred by, or in connection with, acts or omissions of JoVE, its employees, agents or independent contractors.

13. **Fees.** To cover the cost incurred for publication, JoVE must receive payment before production and publication the Materials. Payment is due in 21 days of invoice. Should the Materials not be published due to an editorial or production decision, these funds will be returned to the Author. Withdrawal by the Author of any submitted Materials after final peer review approval will result in a US\$1,200 fee to cover pre-production expenses incurred by JoVE. If payment is not received by the completion of filming, production and publication of the Materials will be suspended until payment is received.

14. **Transfer, Governing Law.** This Agreement may be assigned by JoVE and shall inure to the benefits of any of JoVE's successors and assignees. This Agreement shall be governed and construed by the internal laws of the Commonwealth of Massachusetts without giving effect to any conflict of law provision thereunder. This Agreement may be executed in counterparts, each of which shall be deemed an original, but all of which together shall be deemed to be one and the same agreement. A signed copy of this Agreement delivered by facsimile, e-mail or other means of electronic transmission shall be deemed to have the same legal effect as delivery of an original signed copy of this Agreement.

A signed copy of this document must be sent with all new submissions. Only one Agreement is required per submission.

CORRESPONDING AUTHOR

| | | |
|--------------|---|----------------|
| Name: | Jing Chen | |
| Department: | Department of Ophthalmology | |
| Institution: | Boston Children's Hospital, Harvard Medical School | |
| Title: | Associate Prof. | |
| Signature: |  | Date: 10/08/18 |

Please submit a **signed** and **dated** copy of this license by one of the following three methods:

1. Upload an electronic version on the JoVE submission site
2. Fax the document to +1.866.381.2236
3. Mail the document to JoVE / Attn: JoVE Editorial / 1 Alewife Center #200 / Cambridge, MA 02140

Dr. Phillip Steindel
Review Editor
Journal of Visualized Experiments

Ref: *JoVE* Manuscript JoVE59222, Assessment and characterization of hyaloid vessels in mice

Dec 6th, 2018

Dear Dr. Steindel:

We thank you for handling our article and your decision letter again dated Dec 5th, 2018. We appreciate your comments.

We have revised the manuscript accordingly and addressed all raised concerns which are detailed in the attached point-by-point response letter. The main changes are:

1. We have revised the Introduction to avoid overlapping with previous work.
2. We have highlighted (in yellow) less than 2.75 pages that identify the essential steps of the protocol for the video.

We provided for your review a separate file of the track-changed (in red) manuscript with all requested changes highlighted.

We appreciate your suggestions, and hope that the revised manuscript is now acceptable for publication in *JoVE*.

Sincerely,

Jing Chen, PhD

Associate Professor of Ophthalmology
Department of Ophthalmology
Boston Children's Hospital
Harvard Medical School
Boston, MA 02115
Email: jing.chen@childrens.harvard.edu
Tel: 617-919-2525

Point by Point Response to the Editor

Editorial comments:

1. Please rewrite the title to avoid the use of a subtitle (not just the use of a colon); e.g., just “Assessment and characterization of hyaloid vessels in mice”.

Response: We have removed the subtitle and changed the title to “Assessment and characterization of hyaloid vessels in mice”.

2. Please revise the Introduction to avoid overlap with previous works (see attached iThenticate report).

Response: We have revised the Introduction to eliminate overlap with previous work.

3. Protocol: Formatted per JoVE guidelines (spaces between steps, all text aligned to the left margin; see attached manuscript), the protocol is longer than 2.75 pages long, our limit for filming. Please highlight 2.75 pages or less of the Protocol (including headers and spacing) that identifies the essential steps of the protocol for the video, i.e., the steps that should be visualized to tell the most cohesive story of the Protocol. Remember that non-highlighted Protocol steps will remain in the manuscript, and therefore will still be available to the reader.

Response: We have highlighted less than 2.75 pages (in yellow) that identify the essential steps of the protocol for the video.

4. Current Protocol Section 1: Please provide information at the end regarding recovery from anesthesia.

Response: We have included the recovery step from anesthesia in Protocol, Part I, 1.4.

5. Figure 3: There are 2 scale bars here; please explain both. Also, they are in panel B, not panel A (as seems to be indicated).

Response: Both of the X and Y scale bars in Figure 3 represent 100 μm . We have reworded as “Both scale bars” to avoid confusion (track-changed in red). They are indeed in the second (right) image of Panel A (top two images) for OCT images. Images in Panel B (bottom two) are from FFA live photos without applicable scale bar.

6. Figure 4: Please explain the scale bars in the legend. Also, please explain what statistical test was used to get the given P-value.

Response: We have reworded as “All scale bars” in the legend (track-changed in red). We have added in legend description that two-tailed Student’s *t*-test was used for statistical analysis.

Our Reference: AJPA 2415

P-copyright-v19/2015

**American Society for Investigative Pathology
(hereinafter the "Copyright Owner")
JOURNAL PUBLISHING AGREEMENT**

**PLEASE PROVIDE US WITH THE FOLLOWING INFORMATION, REVIEW OUR POLICIES AND THE JOURNAL PUBLISHING AGREEMENT,
AND INDICATE YOUR ACCEPTANCE OF THE TERMS**

| |
|---|
| Article entitled: <u>Pharmacological activation of Wnt signaling by lithium normalizes retinal vasculature in a murine model of familial exudative vitreoretinopathy</u> Corresponding author: <u>Dr. Jing Chen</u> To be published in the journal: <u>The American Journal of Pathology</u> Our reference: AJPA <u>2415</u> |
|---|

YOUR STATUS (PLEASE MARK ALL THAT APPLY)
☐ **I am the sole author of the manuscript**

Please indicate which of the below applies to you:

- ☐ I am a UK Government employee electing to transfer copyright
- ☐ I am a UK, Canadian or Australian Government employee and Crown Copyright is claimed
- ☐ I am a US Government employee and the Article is public domain and therefore the 'Assignment of copyright' clause does not apply
- ☐ I am a contractor of the US Government under contract number:
- ☐ None of the above

☒ **I am one author signing on behalf of all co-authors of the manuscript**

Please indicate which of the below applies to you:

- ☐ We are all US Government employees and the Article is public domain and therefore the 'Assignment of copyright' clause does not apply
- ☐ I am a US Government employee but some of my co-authors are not
- ☐ I am not a US Government employee but some of my co-authors are
- ☐ The work was performed by contractors of the US Government under contract number:
- ☐ We are all UK Government employees electing to transfer copyright
- ☐ We are all UK, Canadian or Australian Government employees and Crown Copyright is claimed
- ☐ I am claiming Crown Copyright but some of my co-authors are not employees of the UK, Canadian or Australian Government
- ☐ I am not claiming Crown Copyright but some of my co-authors are employees of the UK, Canadian or Australian Government
- ☒ None of the above

☐ **The Article is a 'work made for hire' and I am signing as an authorized representative of my employer**

Name and job title of assignee if different from corresponding author:

Please indicate which of the below applies to you:

- ☐ The Article is authored by US Government employees and the Article is public domain and therefore the 'Assignment of copyright' clause does not apply
- ☐ The work was performed by contractors of the US Government under contract number:
- ☐ The Article is authored by UK, Canadian or Australian Government employees and Crown Copyright is claimed
- ☐ None of the above

DATA PROTECTION & PRIVACY

I understand that staff of the American Society for Investigative Pathology and its affiliates worldwide will be contacting me concerning the publishing of the Article and occasionally for marketing purposes (unless, with respect to such marketing, I tick the box below).

- ☒ I do not wish to receive news, promotions and special offers about products and services of the American Society for Investigative Pathology and its affiliates worldwide

Please tick **one or more** of the above boxes (as appropriate), review the Journal Publishing Agreement and then sign and date the document in black ink.

Signed: 

Name printed: Jing Chen

Title and Company (if employer representative): _____

Date: 07/21/2016

Please complete this form electronically and return via e-mail to:

E-mail: ESIJJournalAdmin@elsevier.com
Fax: 1-212-633-3680

| |
|--|
| PII: <u>S0002-9440(16)30242-5</u> Reference: AJPA <u>2415</u> |
|--|

THE JOURNAL PUBLISHING AGREEMENT

Assignment of copyright

I hereby assign to the Journal the copyright in the manuscript identified above (where Crown Copyright is claimed, authors agree to grant an exclusive publishing and distribution license) and any tables, illustrations or other material submitted for publication as part of the manuscript (the "Article") in all forms and media (whether now known or later developed), throughout the world, in all languages, for the full term of copyright, effective when the Article is accepted for publication.

Supplemental Materials

With respect to Supplemental Materials that I wish to make accessible either through a link in the Article or on a site or through a service of the Copyright Owner, the Copyright Owner shall be entitled to publish, post, reformat, index, archive, make available and link to such Supplemental Materials on a non-exclusive basis in all forms and media (whether now known or later developed), and to permit others to do so. "Supplemental Materials" shall mean additional materials that are not an intrinsic part of the Article, including but not limited to experimental data, e-components, encodings and software, and enhanced graphical, illustrative, video and audio material.

Reversion of rights

Articles may sometimes be accepted for publication but later rejected in the publication process, even in some cases after public posting in "Articles in Press" form, in which case all rights will revert to the author (see <http://www.elsevier.com/locate/withdrawalpolicy>).

Revisions and addenda

I understand that no revisions, additional terms or addenda to this Journal Publishing Agreement can be accepted without the Copyright Owner's express written consent. I understand that this Journal Publishing Agreement supersedes any previous agreements I have entered into with the Copyright Owner in relation to the Article from the date hereof.

Retention of Rights for Scholarly Purposes (see 'Definitions' clause below)

I understand that I retain or am hereby granted (without the need to obtain further permission) the Retained Rights (see description below), and that no rights in patents, trademarks or other intellectual property rights are transferred to the Copyright Owner.

The Retained Rights include the right to use the Preprint, Accepted Manuscript and the Published Journal Article for Personal Use, Internal Institutional Use and for Scholarly Sharing.

In the case of the Accepted Manuscript and the Published Journal Article the Retained Rights exclude Commercial Use (unless expressly agreed in writing by the Copyright Owner), other than use by the author in a subsequent compilation of the author's works or to extend the Article to book length form or re-use by the author of portions or excerpts in other works (with full acknowledgment of the original publication of the Article).

Author Representations/Ethics and Disclosure

I affirm the Author Representations noted below, and confirm that I have reviewed and complied with the relevant Instructions to Authors, Ethics in Publishing policy, and Conflicts of Interest disclosure. Please note that some journals may require that all co-authors sign and submit Conflicts of Interest disclosure forms. I am also aware of the publisher's policies with respect to retractions and withdrawal (<http://www.elsevier.com/locate/withdrawalpolicy>).

For further information see the publishing ethics page at <http://www.elsevier.com/publishingethics> and the journal home page.

Author Representations

- The Article I have submitted to the journal for review is original, has been written by the stated authors and has not been published elsewhere.
- The Article was not submitted for review to another journal while under review by this journal and will not be submitted to any other journal.
- The Article and the Supplemental Materials contain no libelous or other unlawful statements and do not contain any materials that violate any personal or proprietary rights of any other person or entity.
- I have obtained written permission from copyright owners for any excerpts from copyrighted works that are included and have credited the sources in the Article or the Supplemental Materials.
- Except as expressly set out in this Journal Publishing Agreement, the Article is not subject to any prior rights or licenses and, if my or any of my co-authors' institution has a policy that might restrict my ability to grant exclusive rights under this Journal Publishing Agreement, a written waiver of that policy has been obtained.
- If I am using any personal details or images of patients, research subjects or other individuals, I have obtained all consents required by applicable law and complied with the publisher's policies relating to the use of such images or personal information. See <http://www.elsevier.com/patientphotographs> for further information.
- Any software contained in the Supplemental Materials is free from viruses, contaminants or worms.
- If the Article or any of the Supplemental Materials were prepared jointly with other authors, I have informed the co-author(s) of the terms of this Journal Publishing Agreement and that I am signing on their behalf as their agent, and I am authorized to do so.

For information on the publisher's copyright and access policies, please see <http://www.elsevier.com/copyright>.*

* Please note that society or third party owned journals may have different publishing agreements. Please see the journal's guide for authors for journal specific copyright information.

DEFINITIONS

Accepted Manuscript

The manuscript of an Article that has been accepted for publication and which typically includes author-incorporated changes suggested during submission, peer review, and editor-author communications. The Accepted Manuscript should not be added to or enhanced in any way to appear more like, or to substitute for, the Published Journal Article. Authors may share their Accepted Manuscript for Internal Institutional Use, Personal Use, and Scholarly Sharing purposes, as described below, with a link to the formal publication through the relevant DOI.

Commercial Use

Permission for commercial use of Accepted Manuscripts and Published Journal Articles may be obtained only from the publisher (<http://www.elsevier.com/about/company-information/policies/copyright/permissions>), such as:

- for commercial gain for example by associating advertising with the full-text of the Article, by providing hosting services to other repositories or to other organisations, or charging fees for document delivery or access
- to substitute for the services provided directly by the publisher - for example article aggregation, systematic distribution via e-mail lists or share buttons, posting, indexing or linking by commercial companies for use by customers of such companies (e.g. pharmaceutical companies and physician prescribers).

Internal Institutional Use

Use by the author's institution for classroom teaching at the institution and for internal training purposes (including distribution of copies, paper or electronic, and use in coursepacks and courseware programs, but not in MOOCs – Massive Open Online Courses) and inclusion of the Article in applications for grant funding. For authors employed by companies, the use by that company for internal training purposes.

Personal Use

Use by an author in the author's classroom teaching (including distribution of copies, paper or electronic), distribution of copies (including through e-mail) to known research colleagues for their personal use, use in a subsequent compilation of the author's works, inclusion in a thesis or dissertation, preparation of other derivative works such as extending the Article to book-length form, or otherwise using or re-using portions or excerpts in other works (with full acknowledgment of the original publication of the Article).

Preprint

Author's own write-up of research results and analysis that has not been peer reviewed, nor had any other value added to it by a publisher (such as formatting, copy editing, technical enhancements, and the like). Preprints should not be added to or enhanced in any way in order to appear more like, or to substitute for, the Published Journal Article. Manuscript submissions will be ineligible for review if previously published in any form (print or online) other than as an abstract.

Published Journal Article

The definitive final record of published research that appears or will appear in the journal and embodies all value-adding publisher activities including peer review co-ordination, copy-editing, formatting, (if relevant) pagination and online enrichment.

Scholarly Sharing

Preprints: Sharing of Preprints by an author on any website or repository is discouraged. Manuscript submissions will be ineligible for review if previously published in any form (print or online) other than as an abstract.

Accepted Manuscripts:

- (i) **immediately on acceptance:** sharing of the Accepted Manuscript by an author:
 - via the author's research institute or institutional repository for Internal Institutional Use or as part of an invitation-only research collaboration work-group
 - directly by providing copies to the author's students or to research collaborators for their personal use
 - for private scholarly sharing as part of an invitation-only work group on commercial sites with which the publisher has a hosting agreement
- (ii) **after the embargo period:** an author may share the Accepted Manuscript via non-commercial hosting platforms (such as the author's institutional repository) and via commercial sites with which the publisher has a hosting agreement.

To check the embargo period for the journal, go to

http://www.elsevier.com/_data/assets/pdf_file/0018/121293/external-embargo-list.pdf

The publisher has agreements with certain funding agencies that may permit shorter embargo periods and/or different sharing guidelines. To learn more about the publisher's policies and agreements with such agencies or institutions go to

<http://www.elsevier.com/fundingbodyagreements>.

Published Journal Article: the author may share a link to the formal publication through the relevant DOI. Additionally theses and dissertations which contain embedded Published Journal Articles as part of the formal submission may be hosted publicly by the awarding institution with a link to the formal publication through the relevant DOI. Any other sharing of Published Journal Articles is by agreement with the publisher only.

Licenses and Copyright


The following policy applies to all PLOS journals, unless otherwise noted.

What Can Others Do with My Original Article Content?

PLOS applies the Creative Commons Attribution (CC BY) license to articles and other works we publish. If you submit your paper for publication by PLOS, you agree to have the CC BY license applied to your work. Under this Open Access license, you as the author agree that anyone can reuse your article in whole or part for any purpose, for free, even for commercial purposes. Anyone may copy, distribute, or reuse the content as long as the author and original source are properly cited. This facilitates freedom in re-use and also ensures that PLOS content can be mined without barriers for the needs of research.

May I Use Content Owned by Someone Else in My Article?

If you have written permission to do so, yes. If your manuscript contains content such as photos, images, figures, tables, audio files, videos, etc., that you or your co-authors do not own, we will require you to provide us with proof that the owner of that content (a) has given you written permission to use it, and (b) has approved of the CC BY license being applied to their content. We provide a form you can use to ask for and obtain permission from the owner. Download the form (PDF).

 If you do not have owner permission, we will ask you to remove that content and/or replace it with other content that you own or have such permission to use.

Don't assume that you can use any content you find on the Internet, or that the content is fair game just because it isn't clear who the owner is or what license applies. It's up to you to ascertain what rights you have—if any—to use that content.

May I Use Article Content I Previously Published in Another Journal?

Many authors assume that if they previously published a paper through another publisher, they own the rights to that content and they can freely use that content in their PLOS paper, but that's not necessarily the case – it depends on the license that covers the other paper. Some publishers allow free and unrestricted re-use of article content they own, such as under the CC BY license. Other publishers use licenses that allow re-use only if the same license is applied by the person or publisher re-using the content.

If the paper was published under a CC BY license or another license that allows free and unrestricted use, you may use the content in your PLOS paper provided that you give proper attribution, as explained above.

If the content was published under a more restrictive license, you must ascertain what rights you have under that license. At a minimum, review the license to make sure you can use the content. Contact that publisher if you have any questions about the license terms – PLOS staff cannot give you legal advice about your rights to use third-party content. If the license does not permit you to use the content in a paper that will be covered by an unrestricted license, you must obtain written permission from the publisher to use the content in your PLOS paper. Please do not include any content in your PLOS paper which you do not have rights to use, and always give proper attribution.

What Are Acceptable Licenses for Data Repositories?

If any relevant accompanying data is submitted to repositories with stated licensing policies, the policies should not be more restrictive than CC BY.

Removal of Content Used Without Clear Rights

PLOS reserves the right to remove any photos, captures, images, figures, tables, illustrations, audio and video files, and the like, from any paper, whether before or after publication, if we have reason to believe that the content was included in your paper without permission from the owner of the content.

How Does One Give Proper Attribution for Use of Content?

When citing a PLOS research article, use the "Vancouver style", as outlined in our Submission Guidelines. For example:

Kaltenbach LS et al. (2007) Huntingtin Interacting Proteins Are Genetic Modifiers of Neurodegeneration. *PLOS Genet* 3(5): e82.
doi:10.1371/journal.pgen.0030082.

When citing non-article content from a PLOS website (e.g., blog content), provide a link to the content, and cite the title and author(s) of that content.

For examples of proper attribution to other types of content, see websites such as Open.Michigan.