

# Journal of Visualized Experiments

## The use of environmental dynamic mechanical analysis to predict the softening behavior of neural implants --Manuscript Draft--

Article Type:	Invited Methods Article - JoVE Produced Video
Manuscript Number:	JoVE59209R1
Full Title:	The use of environmental dynamic mechanical analysis to predict the softening behavior of neural implants
Keywords:	Dynamic mechanical analysis, softening polymer, plasticization, neural implants, immersion, environmental testing, thermomechanical measurements
Corresponding Author:	Melanie Ecker Richardson, TX UNITED STATES
Corresponding Author's Institution:	
Corresponding Author E-Mail:	melanie.ecker@utdallas.edu
Order of Authors:	Seyed Mahmoud Hosseini Walter E. Voit Melanie Ecker
Additional Information:	
Question	Response
Please indicate whether this article will be Standard Access or Open Access.	Standard Access (US\$2,400)
Please indicate the <b>city, state/province, and country</b> where this article will be <b>filmed</b> . Please do not use abbreviations.	Richardson, TX, United States



**Melanie Ecker, PhD**  
Research Associate  
Phone: 972-883-7249  
Email: melanie.ecker@utdallas.edu

Center for Engineering Innovation  
The University of Texas at Dallas  
800 West Campbell Rd. (BSB 13)  
Richardson, TX 75080

October 5, 2018

Dear Dr. Singh,

Thanks for inviting us to submit an article to JoVE. On behalf of my coauthors, I am pleased to submit the attached manuscript entitled "*The use of environmental dynamic mechanical analysis to predict the softening behavior of neural implants*" which we ask you to consider for publication as methods article with JoVE in the section Bioengineering.

This manuscript describes a method that allows predicting the *in vivo* mechanical behavior materials used for neural implants utilizing environmental dynamic mechanical analysis (DMA). Measuring DMA in solution gives an insight into the softening behavior of polymeric materials and allows quantifying the plasticization of those materials. It also allows for detailed studies of materials durability, and behavior after various treatments such as sterilization.

Beyond the appeal for bioelectronic medicines, we believe that understanding the behavior of polymers under body conditions would be of interest for a variety of biomedical applications. Overall, we think that our method improves the ability to characterize materials behavior *in vitro* and can therefore reduce the need of *in vivo* studies

To our knowledge, this method represents a significant advancement for future applications of responsive substrates for biomedical devices and is an important step towards chronic *in vivo* studies where reliable devices are a key step.

Please do not hesitate to contact me with any questions. Thank you for your consideration.

Sincerely,

A handwritten signature in blue ink that reads "Melanie Ecker".

Melanie Ecker, PhD

**TITLE:**

Environmental Dynamic Mechanical Analysis to Predict the Softening Behavior of Neural Implants

**AUTHORS & AFFILIATIONS:**

Seyed Mahmoud Hosseini<sup>1</sup>, Walter E. Voit<sup>1,2,3</sup>, Melanie Ecker<sup>2,3,4</sup>

<sup>1</sup>Department of Chemistry and Biochemistry, The University of Texas at Dallas, Dallas, TX, USA

<sup>2</sup>Department of Materials Science and Engineering, The University of Texas at Dallas, Dallas, TX, USA

<sup>3</sup>Center for Engineering Innovation, The University of Texas at Dallas, Dallas, TX, USA

<sup>4</sup>Department of Bioengineering, The University of Texas at Dallas, Dallas, TX, USA

**Corresponding Author:**

Melanie Ecker (melanie.ecker@utdallas.edu)

**Email Addresses of Co-authors:**

Seyed Mahmoud Hosseini (sxh144830@utdallas.edu)

Walter E. Voit (wlater.voit@utdallas.edu)

**KEYWORDS:**

Dynamic mechanical analysis, softening polymer, plasticization, neural implants, immersion, environmental testing, thermomechanical measurements

**SUMMARY:**

To allow reliable predictions of the softening of polymeric substrates for neural implants in an *in vivo* environment, it is important to have a reliable *in vitro* method. Here, the use of dynamic mechanical analysis in phosphate buffered saline at body temperature is presented.

**ABSTRACT:**

When using dynamically softening substrates for neural implants, it is important to have a reliable *in vitro* method to characterize the softening behavior of these materials. In the past, it has not been possible to satisfactorily measure the softening of thin films under conditions mimicking body environment without substantial effort. This publication presents a new and simple method that allows dynamic mechanical analysis (DMA) of polymers in solutions, such as phosphate buffered saline (PBS), at relevant temperatures. The use of environmental DMA allows measurement of the softening effects of polymers due to plasticization in various media and temperatures, which therefore allows a prediction of the materials behavior under *in vivo* conditions.

**INTRODUCTION:**

A new generation of materials used as substrates for neural implants comprises softening shape memory polymers<sup>1-9</sup>. These materials are stiff enough during implantation to overcome critical buckling forces, but they become up to three orders of magnitude softer after implantation in a

body environment. It is predicted that these materials show a better device-tissue interaction due to the reduced mismatch in modulus as compared to traditional materials used in neural implants, such as tungsten or silicon. Traditional, stiff devices show inflammatory response after implantation, followed by tissue encapsulation and astroglial scarring which often results in device failure<sup>10,11</sup>. It is a common assumption that less stiff devices minimize the foreign body response<sup>12-14</sup>. The stiffness of a device is dictated by its cross-sectional area and modulus. Therefore, it is important to reduce both factors to improve the device compliance and, ultimately, the device tissue interaction.

The work on softening polymers was inspired by the work of Nguyen et al.<sup>15</sup>, who demonstrated that mechanically-compliant intracortical implants reduce the neuroinflammatory response. They have previously used mechanically-adaptive poly(vinyl acetate)/tunicate cellulose nanocrystal (tCNC) nanocomposites (NC), which become compliant after implantation.

The Voit lab, on the other hand, uses the highly tunable system of thiol-ene and thiol-ene/acrylate polymers. These materials are advantageous in that the degree of softening after exposure to *in vivo* conditions can easily be tuned by the polymer design. By choosing the right polymer composition and crosslink density, the glass transition temperature and Young's modulus of the polymer can be modified<sup>2,4-6,8</sup>. The underlying effect of the softening is the plasticization of the polymer in an aqueous environment. By having a polymer with a glass transition temperature ( $T_g$ ) above body temperature when dry (the state during implantation), but below body temperature after being immersed in water or PBS, the resulting stiffness/modulus of the polymer can shift from glassy (stiff) when dry to rubbery (soft) when implanted<sup>16</sup>.

However, exact and reliable measurements of the softening due to plasticization and the shift of  $T_g$  from the dry to wet states have not been able to be measured in the past. Traditional dynamic mechanical analysis is performed in air or inert gases and does not allow for measuring of the thermomechanical properties of polymers inside a solution. In previous studies, the polymers have been immersed in PBS for various amounts of time. Swollen samples were then used to perform dynamic mechanical analysis (DMA)<sup>6-8</sup>. However, since the procedure involves a temperature ramp, samples start to dry during the measurement and do not yield representative data. This is especially true if the sample size becomes smaller. In order to predict the softening of neural probes, it would be necessary to test 5 to 50  $\mu\text{m}$ -thin polymer films, which is not possible with traditional DMA due to the abovementioned drying of the samples during the measurement.

Hess et al.<sup>17</sup> have designed a custom-built microtensile testing machine to assess the mechanical properties of mechanically adaptive materials using an environmentally controlled method. They have previously used an airbrush system to spray water on samples during the measurement to prevent them from drying out.

The use of environmental DMA (**Figure 1**), however, allows for measurement of polymer films

in solutions, such as water and PBS, at various temperatures. This allows not only measurement of the polymer's thermomechanical properties in the soaked/softened state but also measurement of its softening kinetics. Even tensile tests and swelling measurements are possible inside the immersion bath of this machine. This allows for exact studies of the plasticization-induced softening of polymer substrates to predict *in vivo* behaviors.

## PROTOCOL:

### 1. Preparation of polymer samples for testing

1.1. Synthesize the softening thiol-ene polymer according to previous protocols inside a fume hood.<sup>1,2,4,18</sup> Briefly, mix quantitative amounts of thiol to alkene monomers with a total of 0.1 wt% photo initiator.

1.1.1. Prepare a 20 mL glass vial for polymer mixing. Cover the vial in aluminum foil to prevent incident light from contacting the monomer solution and keep at room temperature (RT). Use all chemicals as received without further purification.

1.1.2. For fully softening polymer, add 0.5 mol% 1,3,5-triallyl-1,3,5-triazine-2,4,6(1H,3H,5H)-trione (TATATO), 45 mol% trimethylolpropane tris(3-mercaptopropionate) (TMTMP), and 5 mol% Tris[2-(3-mercaptopropionyloxy)ethyl] isocyanurate (TMICN) to the covered vial using a disposable plastic pipette.

1.1.3. Add 0.1 wt% of the photoinitiator 2,2-dimethoxy-2-phenylacetophenone (DMPA) to the polymer solution.

1.1.4. Mix the contents inside the vial thoroughly by planetary speed mixing without exposing the solution to light.

NOTE: The polymer solution is sensitive to light and will start to polymerize after 45 to 60 min, even if covered with foil. Therefore, use the polymer solution as quickly as possible after mixing.

1.2. Spin coat the polymer solution prepared in section 1.1 as thin films between 5 to 50  $\mu\text{m}$  in thickness on microscopic glass slides or silicon wafers as a carrier substrate according to the spin curve (**Figure 2**). For 30  $\mu\text{m}$  film thickness, spin at 600 rpm for 30 s.

NOTE: When using a different SMP formulation, the spin speed and time may vary depending on the viscosity of the polymer solution.

1.3. Transfer the polymer films onto the carrier substrate immediately after spinning to the crosslinking chamber. Photo-polymerize the films for 60 min under 365 nm UV bulbs and post-cure for 24 h in a vacuum oven at 120 °C to further complete the conversion.

1.4. Cut the cured polymer films into rectangular samples with widths of 4.5 mm and lengths of 50 mm for the DMA testing. Thicknesses may vary from 5 to 50  $\mu\text{m}$ . The samples can be brought into measuring geometry applying two different methods (choose step 1.4.1 or 1.4.2).

1.4.1. Cut the cured polymer films into rectangles using a  $\text{CO}_2$  laser. Set the  $\text{CO}_2$  laser micromachining parameters to 5.0% power (2.0 W) and 10.0% speed (0.254 m/s) (**Figure 3A**).

1.4.2. Define the DMA samples using photolithography in a Class 10000 cleanroom facility (**Figure 3B**). Use the SMP-on-glass or wafer substrates as the starting substrates in the cleanroom.

1.4.2.1. Deposit low temperature silicon nitride to act as a hard mask for the following plasma etching processes. Pattern the device outline/shape using standard lithography techniques. Use a plasma etcher with  $\text{SF}_6$  and  $\text{O}_2$  plasma to remove the hard mask and SMP layer, respectively.

1.4.2.2. After the SMP layer is plasma etched down to the glass slide/wafer, etch the remaining silicon nitride hard mask away in diluted 10:1 HF dip.

1.5. Delaminate the test devices from the glass slide/wafer by soaking in deionized water as the last step.

## 2. Machine setup

2.1. Use a dynamic mechanical analyzer (DMA) with an immersion system. Equip the machine with the immersion fixture in tension mode (**Figure 1**). Connect the liquid nitrogen to the machine and enable  $\text{LN}_2$ /air as a gas source for the furnace.

2.2. Write the method for dry measurements with the machine software, including the following three steps: conditioning, oscillation temperature ramp, and conditioning end of test, then set up the parameters as follows:

2.2.1. Set the following parameters for the conditioning options: mode = active, select "tension", axial force = 0.05 N, set initial value to "on", sensitivity = 0.0 N, proportional force mode = force tracking, compensate for modulus = on, select "axial force" then set dynamic force to 25.0%, minimum axial force = 0.05 N, programmed extension below 0.0 Pa, mode enabled, strain adjust = 0.05%, minimum strain = 0.1%, maximum strain = 0.5%, minimum force = 0.05 N, maximum force = 0.2 N.

2.2.2. Set the following parameters for the oscillation temperature ramp: start temperature = 10  $^\circ\text{C}$ , inherit set point = off, soak time = 0.0 s, wait for temperature = on, ramp rate = 2.0  $^\circ\text{C}/\text{min}$ , end temperature = 100  $^\circ\text{C}$ , soak time after ramp = 0.0 s, sampling rate = 1 pts/s, strain % = 0.275%, single point, frequency = 1 Hz.

2.2.3. Set the following parameters for the conditioning end of test: environmental control =

off, axial force adjustment = on, mode disabled, transducer/motor = off.

2.3. Write the method for the immersion testing with the machine software including the following four steps: conditioning, oscillation-time, oscillation-temperature ramp, and conditioning-end of test, then set up the parameters as follows:

2.3.1. Set the following parameters for the conditioning options: mode = active, select "tension", axial force = 0.05 N, set initial value to "on", sensitivity = 0.0 N, proportional force mode = force tracking, compensate for modulus = on, select "axial force" and set dynamic force to 25.0%, minimum axial force = 0.05 N, programmed extension below 0.0 Pa, mode enabled, strain adjust = 0.05%, minimum strain = 0.1%, maximum strain = 0.5%, minimum force = 0.05 N, maximum force = 0.2 N.

2.3.2. Set the following parameters for the oscillation time: temperature = 39.5 °C, inherit set point = off, soak time = 0.0 s, wait for temperature = off, duration = 3600.0 s, sampling rate = 1 pts/s, strain % = 0.275%, single point, frequency = 1 Hz.

2.3.3. Set the following parameters for the oscillation temperature ramp: start temperature = 10 °C, inherit set point = off, soak time = 300.0 s, wait for temperature = off, ramp rate = 2.0 °C/min, end temperature = 85 °C, soak time after ramp = 300.0 s, sampling rate = 1 pts/s, strain % = 0.275%, single point, frequency = 1 Hz.

2.3.4. Set the following parameters for the conditioning end of test: environmental control = off, axial force adjustment = on, mode disabled, transducer/motor = off.

### 3. Sample loading and unloading for dry measurements

3.1. Measure the actual thickness of the polymer specimen for dry (in air) testing with Caliper with 0.001 mm precision.

3.2. Enter the sample name, description, and sample geometry into the software.

3.3. Set the loading gap to 15 mm and load the sample. Make sure to center and align specimen before the clamps are screwed hand tight or use a torque wrench with 0.1 N (Figure 3C).

3.4. Close the furnace and start the measurement using the methods described in section 2.2.

3.6. Wait until the measurement is over. Open the furnace and remove the polymer sample from the machine.

### 4. Sample loading and unloading for immersion testing

4.1. Measure the actual thickness of the polymer specimen for immersion testing in PBS with Caliper with 0.001 mm precision.

4.2. Enter the sample name, description, and sample geometry into the software.

4.3. Prepare the setup with the immersion beaker fixed with a clamp at the upper grip (**Figure 4A,B**).

4.4. Set the loading gap to 15 mm and load the sample (**Figure 4C**). Make sure to center and align the specimen (**Figure 5**) before the clamps are screwed hand tight or use a torque wrench with 0.1 N.

4.5. Place the immersion bath on the bottom fixture and screw it tightly (**Figure 4D**). Fill the bath with RT PBS (**Figure 4E**), place the lid on top (**Figure 4F**), close the furnace (**Figure 4G**), and start the measurement immediately using the methods described in section 2.3. Ensure that the drain is closed (**Figure 4H**).

4.6. Wait until the measurement is over. Remove the PBS from the immersion baths using the drain. Open the furnace, remove the lid from the beaker, unscrew the immersion beaker, lift it, and remove the polymer sample from the machine.

4.7. Clean the clamps and immersion beaker with de-ironed water to remove any remaining salt from the PBS.

## 5. Measurements

5.1. Measure the polymer in air without the immersion beaker. Follow the instructions for sample loading and unloading as described in section 3. Repeat this measurement at least 3x to gather results with statistical relevance.

5.2. Measure the polymer inside the immersion bath following the steps described in section 4. Repeat the measurement at least 3x to gather results with statistical relevance.

## 6. Data interpretation

6.1. Open the **results** tab in the machine software, where the raw data can be viewed in a table format or plotted as a graph.

6.2. Plot the first part of the immersion measurement, the oscillation-time measurement, as storage modulus over time to evaluate the softening kinetics. The curve displays how fast the modulus of the polymer decreases over time while immersed in PBS.

6.3. Note the time at which the modulus levels out. This represents the time for softening under physiological conditions.

6.4. If the polymer is not fully softened after the set immersion time of 1 h, repeat the



measurement with increased immersion time.

6.5. Display the oscillation-temperature ramps of the measurements in air and PBS as storage modulus on the left axis and tan delta on the right axis over temperature to display the thermomechanical properties of the polymer before (dry) and after (in PBS) plasticization.

6.6. Plot the data for the dry (air) and PBS measurements together to better display the changes in thermomechanical properties due to plasticization.

6.7. Note the storage modulus of the dry material at 25 °C and of the soaked sample at 37 °C, as these are relevant numbers for evaluating how much the polymer will soften during implantation.

6.8. Note the changes in tan delta peak between the dry and soaked samples.

6.9. Export the data as a .txt or .csv file for further data interpretation and plotting with other software.

#### **REPRESENTATIVE RESULTS:**

The use of environmental DMA allows the analysis of softening kinetics and overall softening capabilities of polymers. By using the temperature-time measuring mode of the protocol, the softening profiles of different polymer formulations can be compared to each other (**Figure 6**). This method can also be used to quantify softening and swelling rates of polymers. It can be seen in **Figure 4** that different polymer formulations may undergo different degrees of softening while being immersed in the 37 °C PBS. The non-softening version remains in the GPa range, whereas the semi-softening polymer softens from 1700 MPa to 370 MPa, and the fully softening polymer to 40 MPa. The softening of all three polymer formulations takes place within 10 to 15 min.

The use of the combination of dry DMA measurements and measurements in PBS allows the assessment of water-induced plasticization of different polymer formulations, which is shown by depression of the  $T_g$  and overall downshift of the modulus curves (**Figure 7**). The softening of the polymers is working most effectively when the dry polymer has a  $T_g$  above body temperature but below that in the wet state. Thus, the modulus of the polymer drops from the glassy to rubbery modulus upon immersion under physiological conditions (**Figure 7A**). When the  $T_g$  of both the dry and wet states of the polymer are well above body temperature, the polymer will not soften under physiological conditions (**Figure 7B**).

#### **FIGURE LEGENDS:**

**Figure 1: Environmental DMA with immersion system.** (A) A more detailed view of the fixture for dry (B) and wet (C) measuring conditions. (B) and (C) are previously published by Ecker et al.<sup>2</sup>.

**Figure 2: Spin curves for fully softening thiol-ene polymer.** Spin curves for fully softening thiol-ene polymer showing the relationship between spin speed and time and the resulting film thickness.

**Figure 3: Fabrication of DMA test stripes on microscopic glass slides.** Fabrication of DMA test stripes on microscopic glass slides (A) or silicon wafers (B) using photolithography.

**Figure 4: Sample loading for measurement with immersion bath.** A (A) DMA equipped with immersion fixture, (B) immersion beaker temporarily fixed with clamps around upper grip, (C) loading of polymer sample at a clamp distance of 15 mm, (D) lowering of immersion beaker to lower fixture and fixation with screws, (E) filling the immersion beaker with PBS, (F) closing the lid, (G) closing the furnace, and (H) ensuring that drain is closed.

**Figure 5: Alignment of sample.** (A) The sample must be straight and centered between the top and bottom clamps. Samples should not be diagonal (B), too high or too low (C), or too much toward the edges (D). Sample should also not be buckled (E) but should be straight (F) to ensure reliable measurements.

**Figure 6: Softening kinetics of three different thiol-ene polymers.** Softening kinetics of three different thiol-ene polymers as measured with the oscillation-time protocol inside PBS at 37 °C for 1 h.

**Figure 7: Displays DMA measurements of two different SMP formulations.** Displays DMA measurements of two different SMP formulations before (orange) and after (blue) soaking in PBS, respectively. (A) A fully-softening (FS) version and (B) slightly-softening version (SS) of SMP. This figure has been modified from Ecker et al.<sup>2</sup>.

## DISCUSSION:

The use of environmental DMA allows the study of the behavior of various polymers used as substrates for neural implants<sup>19</sup> or other biomedical devices in solution and to mimic *in vivo* conditions. This includes, but is not limited to, polyimide, parylene-C, PDMS, and SU-8. Hydrogels and extracellular matrix (ECM) materials can also be investigated using this method. The differences of overall softening of the polymer as well as its softening kinetics can be easily compared between different solutions, including water, heavy water, and PBS. It is also possible to test the influence of different immersion temperatures or differences resulting from varying polymer thicknesses and compositions.

This method also allows studying of the influence of various treatments on softening behaviors of polymers and hydrogels. Treatments include application of various sterilization methods, accelerated aging in various media, and surface modification. This *in vitro* method will help researchers learn about the behavior and durability of these materials, obtain reliable *in vitro* measurements, and avoid unnecessary animal experiments. However, measuring in PBS is just one approach to mimic the biological environments. *In vivo* conditions may vary in many aspects, such as ion concentration and the availability of antibodies, proteins, and other species

inside biological media/tissues. Depending on the targeted area, experimenters may also consider using different media for environmental measurements, such as tris-buffered saline (TBS), TBS-T (TBS with polysorbate 20), bovine serum albumin (BSA), cerebrospinal fluid (CSF), and other body fluids.

In addition, it is possible to characterize the mechanical properties of probes after explantation from an animal after an *in vivo* study is completed. This will allow the investigation of probe behavior after softening in a body environment and comparison to *in vitro* data.

It should be noted that there is an offset between the temperature set for the solution bath and the actual temperature. This is due to the fact that two different temperature controllers are being used: one for temperature control (outside the immersion bath) and another for measuring the temperature (inside the immersion bath). We found that when the outside temperature is set to 39.5 °C, the temperature inside the bath stabilized at 37 °C.

The temperature range for measurements inside solutions are naturally limited by their crystallization and boiling temperatures. It is recommended to remain at least 10 K above and below these temperatures, respectively.

It is debated whether the starting temperature of the immersion solution used for soaking/softening measurements should be room temperature or pre-warmed to body temperature to best mimic the conditions during probe implantation. The use of RT PBS takes into account the fact that the probe is kept at RT before implantation and that it is usually kept in close proximity to the implantation side while it is aligned to the right position. At this stage, the probe may already start to soften due to the moist milieu. Starting with 37 °C PBS will better mimic a shotgun approach for insertion.

The described results were measured on polymer films in tension mode; however, the environmental DMA is also capable of measurements in compression and in shear when using the respective fixture. Therefore, this also allows for the measurement of other sample geometries. It should be noted that the available space inside the immersion beaker is limited and thus the samples used for measurements inside this beaker are restricted by their sizes.

Another limitation of this method is the load cell, which is used to detect the forces generated by the samples during the measurement (in dry and wet conditions). The load cell can only measure forces up to 35 N, which therefore limits the sample size/geometry.

#### **ACKNOWLEDGMENTS:**

The authors want to thank Dr. Taylor Ware for allowing us to use his environmental DMA. This work was supported by the Office of the Assistant Secretary of Defense for Health Affairs through the Peer Reviewed Medical Research Program [W81XWH-15-1-0607]. Opinions, interpretations, conclusions, and recommendations are those of the authors and not necessarily endorsed by the Department of Defense.

## DISCLOSURES:

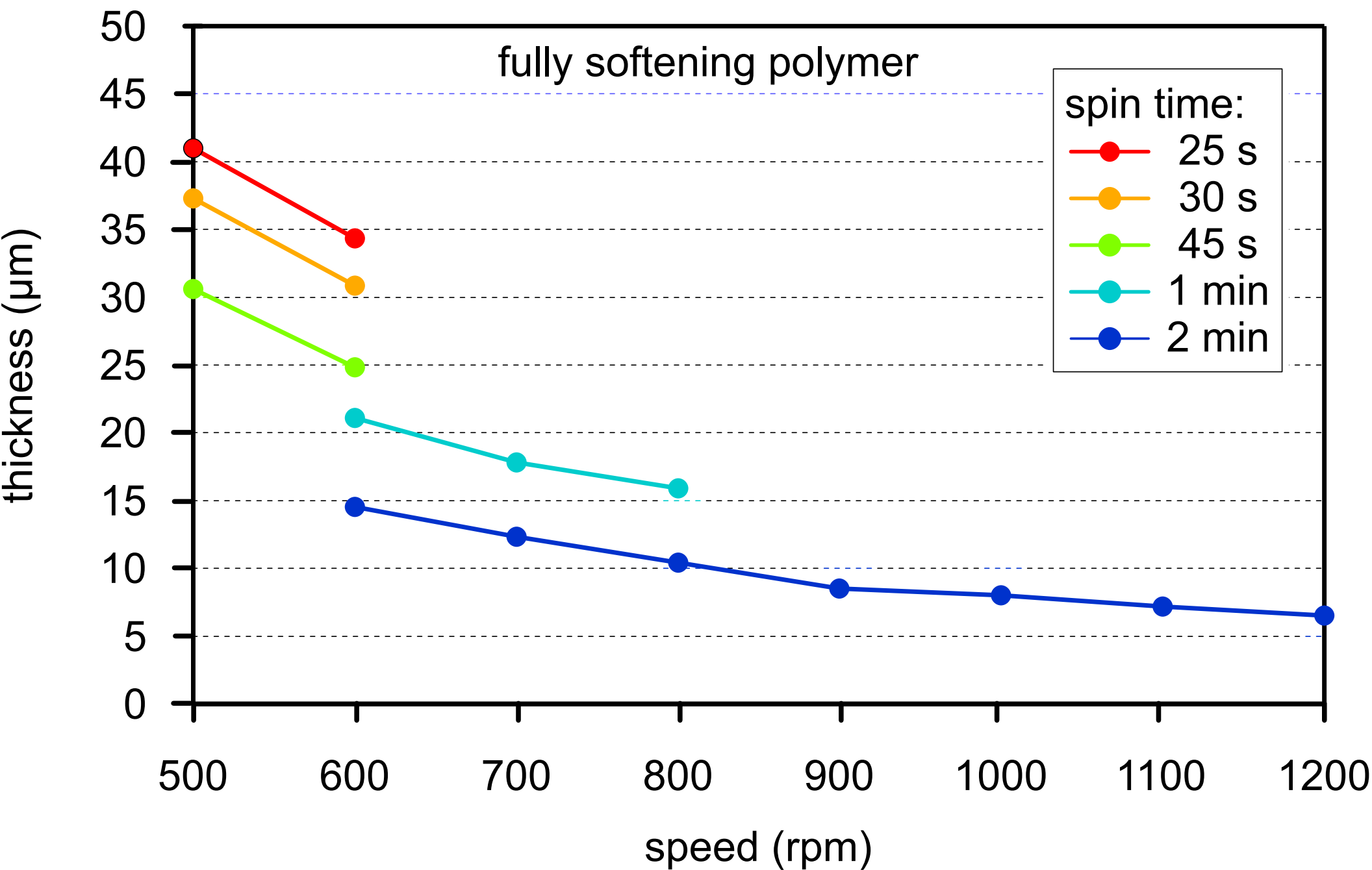
The authors declare that they have no competing financial interests.

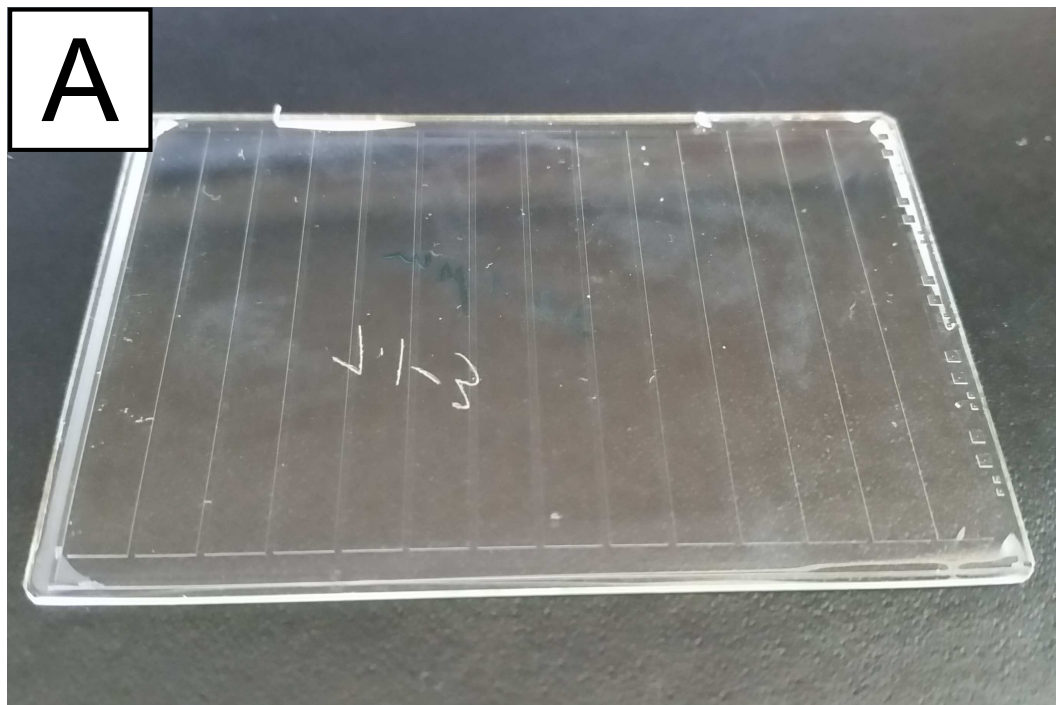
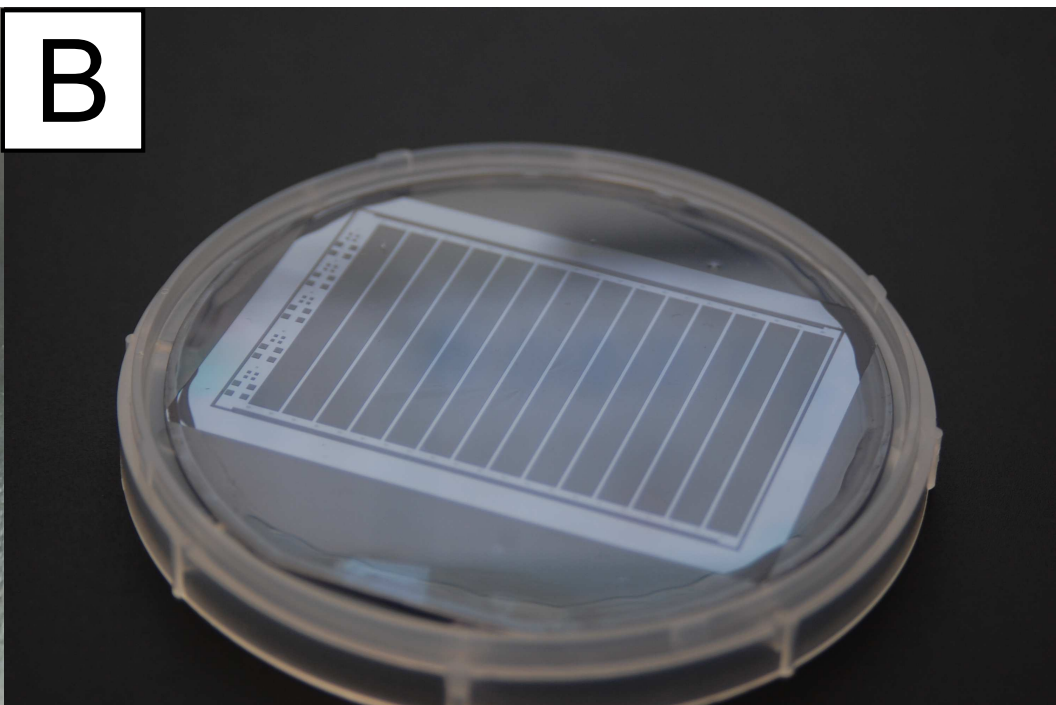
## REFERENCES:

- 1 Garcia-Sandoval, A. *et al.* Chronic softening spinal cord stimulation arrays. *Journal of Neural Engineering*. **15** (4), 045002, doi:10.1088/1741-2552/aab90d (2018).
- 2 Ecker, M. *et al.* Sterilization of Thiol-ene/Acrylate Based Shape Memory Polymers for Biomedical Applications. *Macromolecular Materials and Engineering*. **302** (2), 1600331, doi:10.1002/mame.201600331 (2017).
- 3 Simon, D. M. *et al.* Design and demonstration of an intracortical probe technology with tunable modulus. *Journal of Biomedical Materials Research Part A*. **105** (1), 159-168, doi:10.1002/jbm.a.35896 (2017).
- 4 Do, D.-H., Ecker, M., Voit, W. E. Characterization of a Thiol-Ene/Acrylate-Based Polymer for Neuroprosthetic Implants. *ACS Omega*. **2** (8), 4604-4611, doi:10.1021/acsomega.7b00834 (2017).
- 5 Ware, T. *et al.* Thiol-ene/acrylate substrates for softening intracortical electrodes. *Journal of Biomedical Materials Research Part B-Applied Biomaterials*. **102** (1), 1-11, doi:10.1002/jbmb.32946 (2014).
- 6 Ware, T. *et al.* Thiol-Click Chemistries for Responsive Neural Interfaces. *Macromolecular Bioscience*. **13** (12), 1640-1647, doi:10.1002/mabi.201300272 (2013).
- 7 Ware, T., Simon, D., Rennaker, R. L., II, Voit, W. Smart Polymers for Neural Interfaces. *Polymer Reviews*. **53** (1), 108-129, doi:10.1080/15583724.2012.751924 (2013).
- 8 Ware, T. *et al.* Fabrication of Responsive, Softening Neural Interfaces. *Advanced Functional Materials*. **22** (16), 3470-3479, doi:10.1002/adfm.201200200 (2012).
- 9 Stiller, A. M. *et al.* Chronic Intracortical Recording and Electrochemical Stability of Thiol-ene/Acrylate Shape Memory Polymer Electrode Arrays. *Micromachines*. **9** (10), 500 (2018).
- 10 Biran, R., Martin, D. C., Tresco, P. A. Neuronal cell loss accompanies the brain tissue response to chronically implanted silicon microelectrode arrays. *Experimental Neurology*. **195** (1), 115-126 (2005).
- 11 Polikov, V. S., Tresco, P. A., Reichert, W. M. Response of brain tissue to chronically implanted neural electrodes. *Journal of Neuroscience Methods*. **148** (1), 1-18 (2005).
- 12 Lacour, S. P., Courtine, G., Guck, J. Materials and technologies for soft implantable neuroprostheses. *Nature Reviews Materials*. **1** (10), 16063, doi:10.1038/natrevmats.2016.63 (2016).
- 13 Stiller, A. *et al.* A Meta-Analysis of Intracortical Device Stiffness and Its Correlation with Histological Outcomes. *Micromachines*. **9** (9), 443 (2018).
- 14 Lecomte, A., Descamps, E., Bergaud, C. A review on mechanical considerations for chronically-implanted neural probes. *Journal of Neural Engineering*. **15** (3), 031001 (2018).
- 15 Nguyen, J. K. *et al.* Mechanically-compliant intracortical implants reduce the neuroinflammatory response. *Journal of Neural Engineering*. **11** (5), 056014, doi:10.1088/1741-2560/11/5/056014 (2014).
- 16 Ecker, M. *et al.* From Softening Polymers to Multi-Material Based

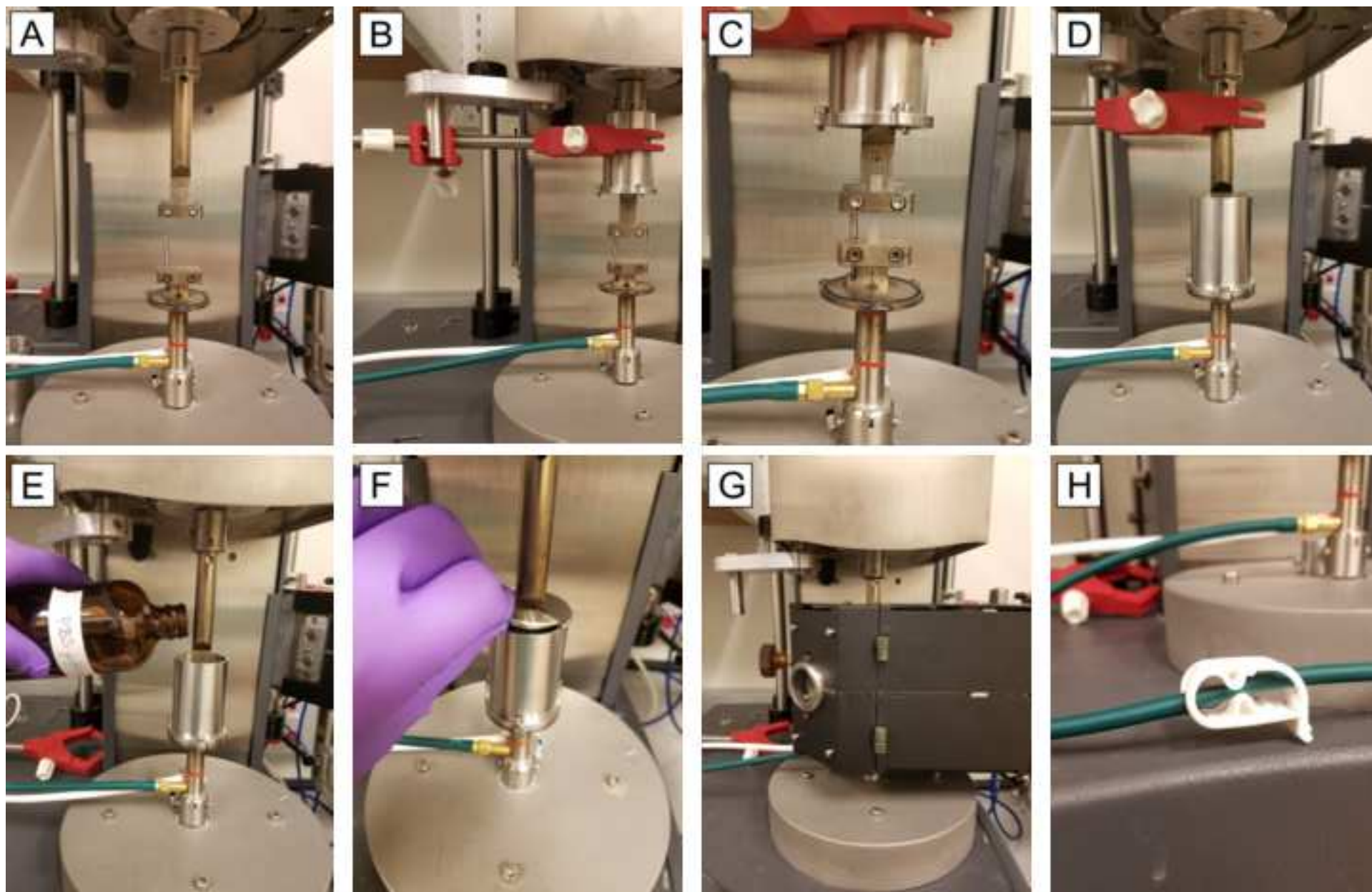
441 Bioelectronic Devices. *Multifunctional Materials*. doi:10.1088/2399-7532/aaed58 (2018).  
442 17 Hess, A. E., Potter, K. A., Tyler, D. J., Zorman, C. A., Capadona, J. R. Environmentally-  
443 controlled Microtensile Testing of Mechanically-adaptive Polymer Nanocomposites for  
444 ex vivo Characterization. *Journal of Visualized Experiments*. (78), e50078,  
445 doi:doi:10.3791/50078 (2013).  
446 18 Black, B. J. *et al.* In vitro compatibility testing of thiol-ene/acrylate-based shape memory  
447 polymers for use in implantable neural interfaces. *Journal of Biomedical Materials*  
448 *Research Part A*. **106** (11), 2891-2898, doi:doi:10.1002/jbm.a.36478 (2018).  
449 19 Hassler, C., Boretius, T., Stieglitz, T. Polymers for neural implants. *Journal of Polymer*  
450 *Science Part B: Polymer Physics*. **49** (1), 18-33, doi:10.1002/polb.22169 (2011).  
451

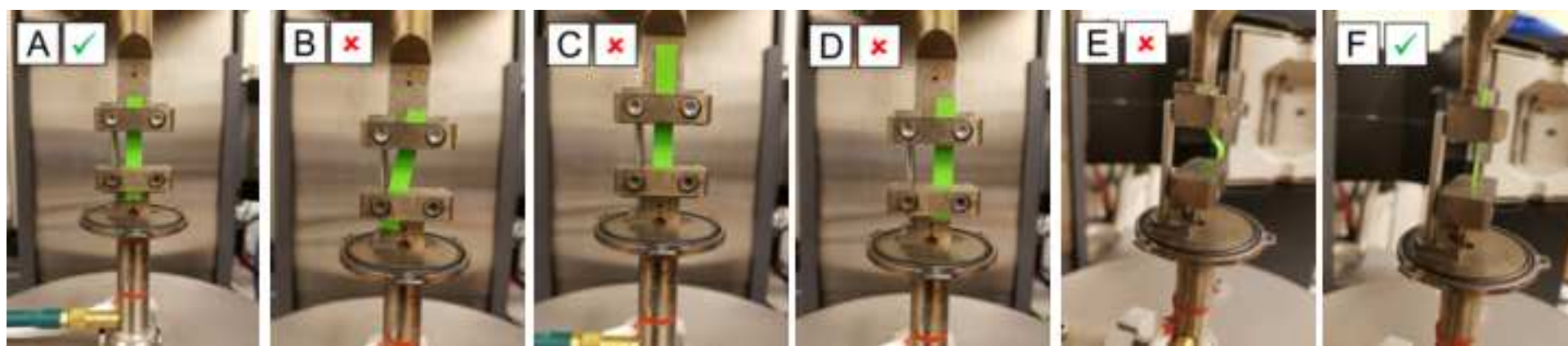


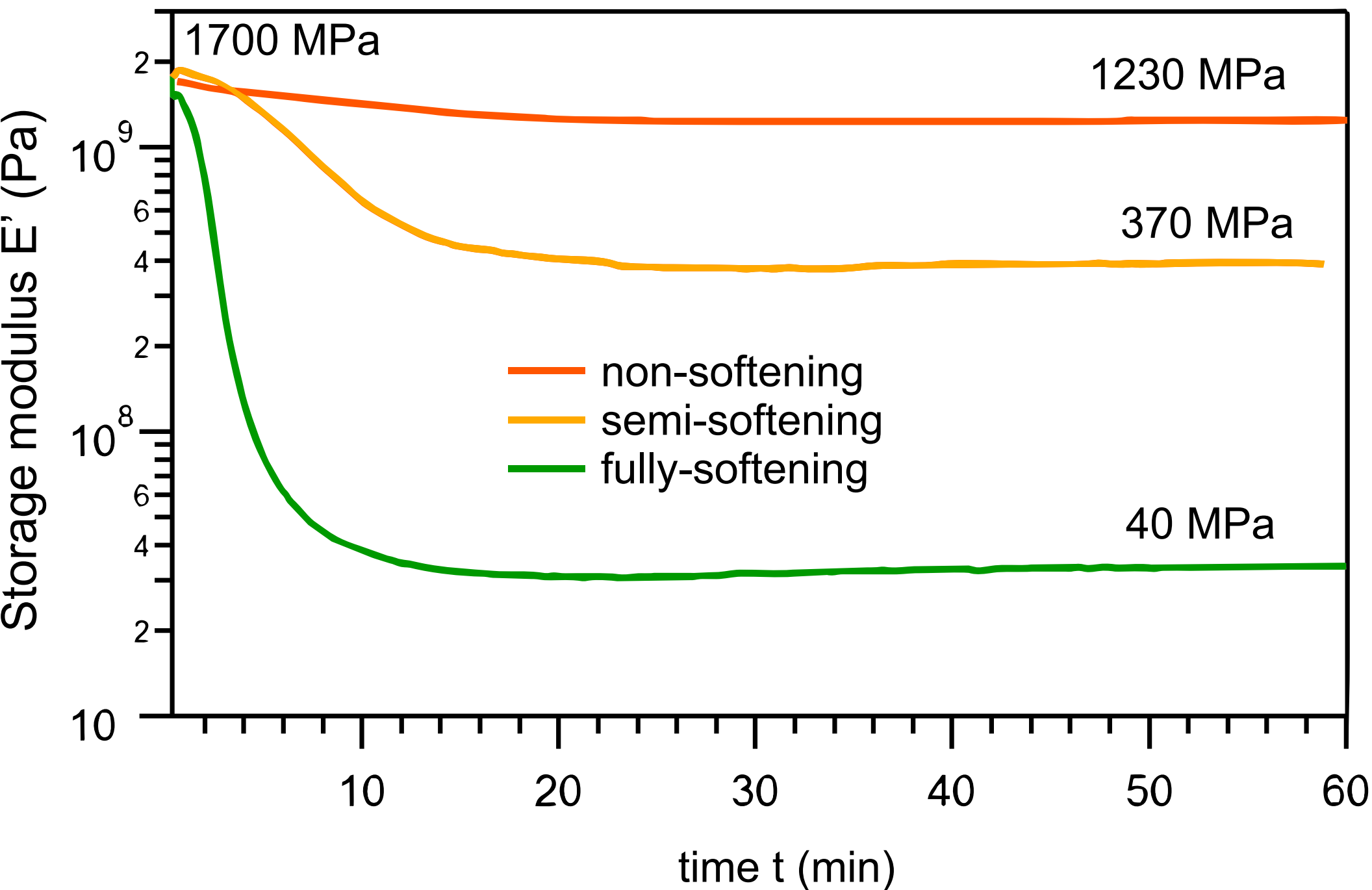


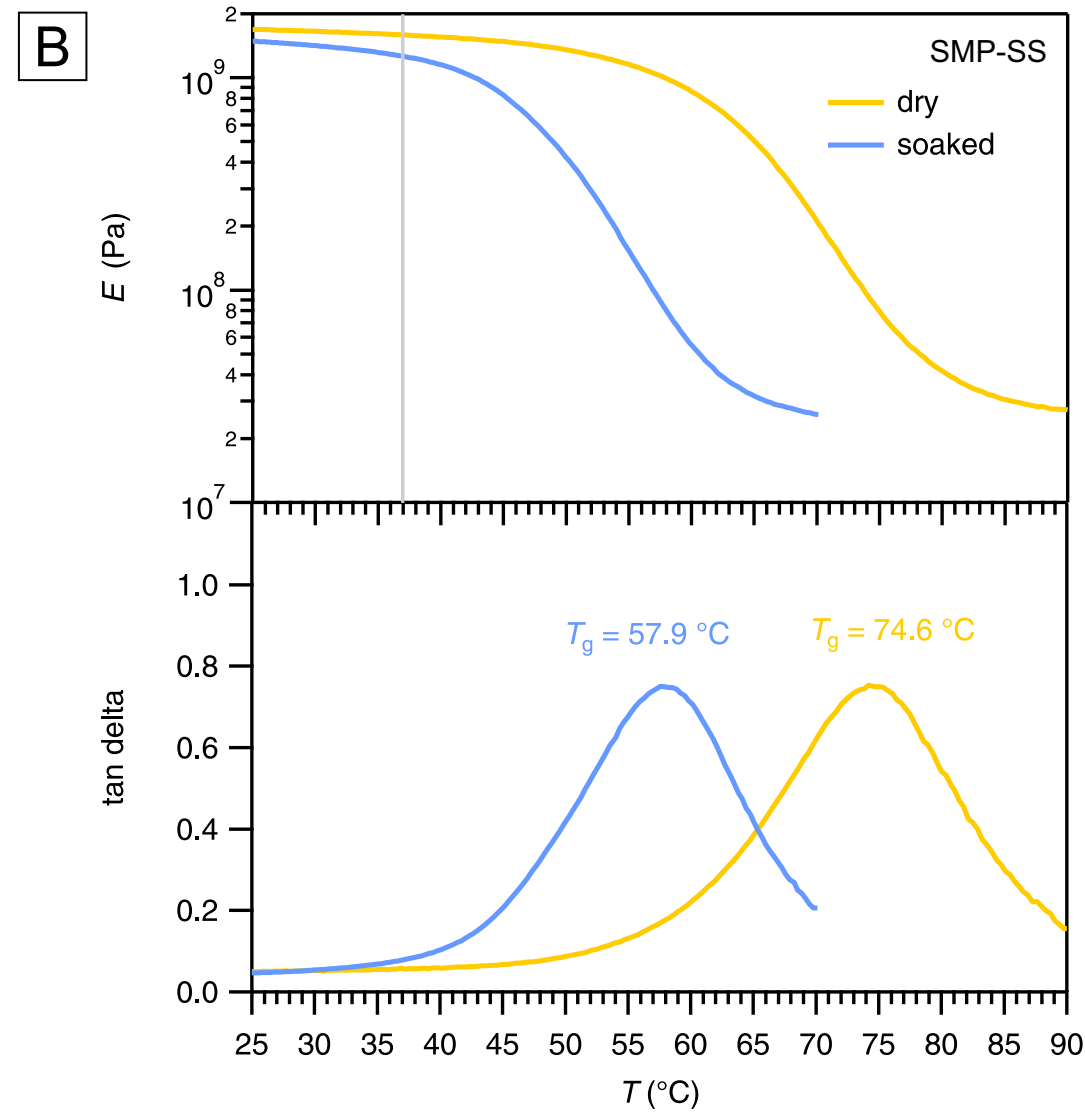
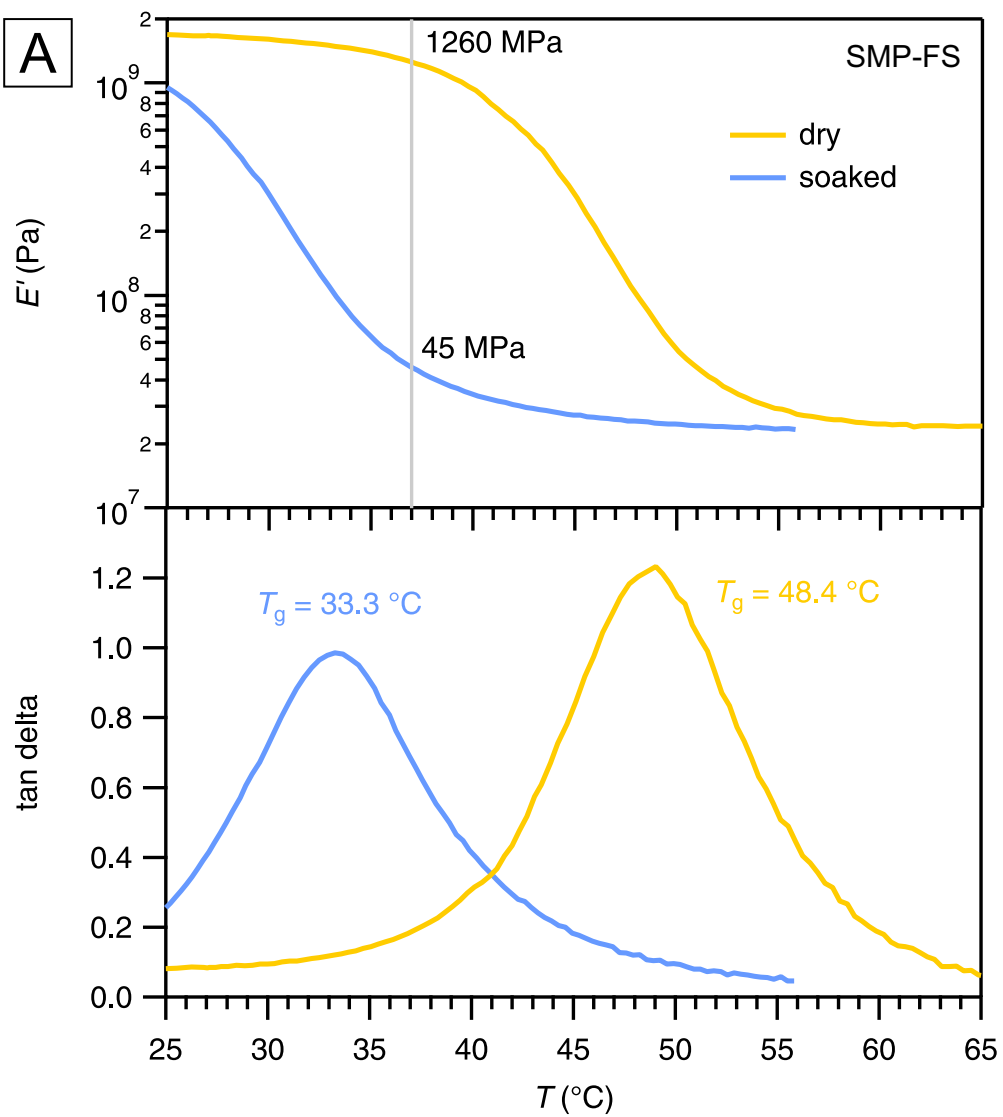
**A****B**











Name of Reagent/ Equipment	Company	Catalog Number
1,3,5-Triallyl-1,3,5-triazine-2,4,6(1H,3H,5H)-trione (TATATO)	Sigma-Aldrich	114235-100G
2,2-Dimethoxy-2-phenylacetophenone (DMPA)	Sigma-Aldrich	196118-50G
CO2 laser Gravograph LS100	Gravotech, Inc.	
Corning Large Glass Microscope Slides, 75 x 50mm	Ted Pella	26005
Environmental DMA: RSA-G2 Solids Analyzer	TA Instruments	
ESD Safe Plastic Tweezer, Tips; Flat, Duckbill, 11.5 cm	Cole Palmer	EW-07387-17
Laurell WS-650-8B spin coater	Laurell Technologies Corporation	
liquid nitrogen	Air gas	
PBS, 1X Solution, Fisher BioReagents	Fisher Scientific	BP243820
SHEL LAB vacuum oven	VWR International	89409-484
Silicon wafer	University Wafer	
The RSA-G2 Immersion System	TA Instruments	
Trimethylolpropane tris(3-mercaptopropionate) (TMTMP)	Sigma-Aldrich	381489-100ML
UVP CL-1000 crosslinking chamber with 365 nm bulbs	VWR International	21474-598

**Comments/Description**

Mechanical grade



1 Alewife Center #200  
Cambridge, MA 02140  
tel. 617.945.9051  
[www.jove.com](http://www.jove.com)

## ARTICLE AND VIDEO LICENSE AGREEMENT

Title of Article:

The use of environmental dynamic mechanical analysis to predict the softening behavior of neural implants

Author(s):

Seyed Mahmoud Hosseini, Walter E. Voit, and Melanie Ecker

Item 1 (check one box): The Author elects to have the Materials be made available (as described at

<http://www.jove.com/author>) via: ☒ Standard Access ☐ Open Access

Item 2 (check one box):

- ☒ The Author is NOT a United States government employee.
- ☐ The Author is a United States government employee and the Materials were prepared in the course of his or her duties as a United States government employee.
- ☐ The Author is a United States government employee but the Materials were NOT prepared in the course of his or her duties as a United States government employee.

### ARTICLE AND VIDEO LICENSE AGREEMENT

1. **Defined Terms.** As used in this Article and Video License Agreement, the following terms shall have the following meanings: “**Agreement**” means this Article and Video License Agreement; “**Article**” means the article specified on the last page of this Agreement, including any associated materials such as texts, figures, tables, artwork, abstracts, or summaries contained therein; “**Author**” means the author who is a signatory to this Agreement; “**Collective Work**” means a work, such as a periodical issue, anthology or encyclopedia, in which the Materials in their entirety in unmodified form, along with a number of other contributions, constituting separate and independent works in themselves, are assembled into a collective whole; “**CRC License**” means the Creative Commons Attribution-Non Commercial-No Derivs 3.0 Unported Agreement, the terms and conditions of which can be found at: <http://creativecommons.org/licenses/by-nc-nd/3.0/legalcode>; “**Derivative Work**” means a work based upon the Materials or upon the Materials and other pre-existing works, such as a translation, musical arrangement, dramatization, fictionalization, motion picture version, sound recording, art reproduction, abridgment, condensation, or any other form in which the Materials may be recast, transformed, or adapted; “**Institution**” means the institution, listed on the last page of this Agreement, by which the Author was employed at the time of the creation of the Materials; “**JoVE**” means MyJoVE Corporation, a Massachusetts corporation and the publisher of *The Journal of Visualized Experiments*; “**Materials**” means the Article and / or the Video; “**Parties**” means the Author and JoVE; “**Video**” means any video(s) made by the Author, alone or in conjunction with any other parties, or by JoVE or its affiliates or agents, individually or in collaboration with the Author or any other parties, incorporating all or any portion of the Article, and in which the Author may or may not appear.

2. **Background.** The Author, who is the author of the Article, in order to ensure the dissemination and protection of the Article, desires to have the JoVE publish the Article and create and transmit videos based on the Article. In furtherance of such goals, the Parties desire to memorialize in this Agreement the respective rights of each Party in and to the Article and the Video.

3. **Grant of Rights in Article.** In consideration of JoVE agreeing to publish the Article, the Author hereby grants to JoVE, subject to **Sections 4** and **7** below, the exclusive, royalty-free, perpetual (for the full term of copyright in the Article, including any extensions thereto) license (a) to publish, reproduce, distribute, display and store the Article in all forms, formats and media whether now known or hereafter developed (including without limitation in print, digital and electronic form) throughout the world, (b) to translate the Article into other languages, create adaptations, summaries or extracts of the Article or other Derivative Works (including, without limitation, the Video) or Collective Works based on all or any portion of the Article and exercise all of the rights set forth in (a) above in such translations, adaptations, summaries, extracts, Derivative Works or Collective Works and (c) to license others to do any or all of the above. The foregoing rights may be exercised in all media and formats, whether now known or hereafter devised, and include the right to make such modifications as are technically necessary to exercise the rights in other media and formats. If the “Open Access” box has been checked in **Item 1** above, JoVE and the Author hereby grant to the public all such rights in the Article as provided in, but subject to all limitations and requirements set forth in, the CRC License.



## ARTICLE AND VIDEO LICENSE AGREEMENT

4. Retention of Rights in Article. Notwithstanding the exclusive license granted to JoVE in **Section 3** above, the Author shall, with respect to the Article, retain the non-exclusive right to use all or part of the Article for the non-commercial purpose of giving lectures, presentations or teaching classes, and to post a copy of the Article on the Institution's website or the Author's personal website, in each case provided that a link to the Article on the JoVE website is provided and notice of JoVE's copyright in the Article is included. All non-copyright intellectual property rights in and to the Article, such as patent rights, shall remain with the Author.

5. Grant of Rights in Video – Standard Access. This **Section 5** applies if the "Standard Access" box has been checked in **Item 1** above or if no box has been checked in **Item 1** above. In consideration of JoVE agreeing to produce, display or otherwise assist with the Video, the Author hereby acknowledges and agrees that, Subject to **Section 7** below, JoVE is and shall be the sole and exclusive owner of all rights of any nature, including, without limitation, all copyrights, in and to the Video. To the extent that, by law, the Author is deemed, now or at any time in the future, to have any rights of any nature in or to the Video, the Author hereby disclaims all such rights and transfers all such rights to JoVE.

6. Grant of Rights in Video – Open Access. This **Section 6** applies only if the "Open Access" box has been checked in **Item 1** above. In consideration of JoVE agreeing to produce, display or otherwise assist with the Video, the Author hereby grants to JoVE, subject to **Section 7** below, the exclusive, royalty-free, perpetual (for the full term of copyright in the Article, including any extensions thereto) license (a) to publish, reproduce, distribute, display and store the Video in all forms, formats and media whether now known or hereafter developed (including without limitation in print, digital and electronic form) throughout the world, (b) to translate the Video into other languages, create adaptations, summaries or extracts of the Video or other Derivative Works or Collective Works based on all or any portion of the Video and exercise all of the rights set forth in (a) above in such translations, adaptations, summaries, extracts, Derivative Works or Collective Works and (c) to license others to do any or all of the above. The foregoing rights may be exercised in all media and formats, whether now known or hereafter devised, and include the right to make such modifications as are technically necessary to exercise the rights in other media and formats. For any Video to which this Section 6 is applicable, JoVE and the Author hereby grant to the public all such rights in the Video as provided in, but subject to all limitations and requirements set forth in, the CRC License.

7. Government Employees. If the Author is a United States government employee and the Article was prepared in the course of his or her duties as a United States government employee, as indicated in **Item 2** above, and any of the licenses or grants granted by the Author hereunder exceed the scope of the 17 U.S.C. 403, then the rights granted hereunder shall be limited to the maximum rights permitted under such

statute. In such case, all provisions contained herein that are not in conflict with such statute shall remain in full force and effect, and all provisions contained herein that do so conflict shall be deemed to be amended so as to provide to JoVE the maximum rights permissible within such statute.

8. Likeness, Privacy, Personality. The Author hereby grants JoVE the right to use the Author's name, voice, likeness, picture, photograph, image, biography and performance in any way, commercial or otherwise, in connection with the Materials and the sale, promotion and distribution thereof. The Author hereby waives any and all rights he or she may have, relating to his or her appearance in the Video or otherwise relating to the Materials, under all applicable privacy, likeness, personality or similar laws.

9. Author Warranties. The Author represents and warrants that the Article is original, that it has not been published, that the copyright interest is owned by the Author (or, if more than one author is listed at the beginning of this Agreement, by such authors collectively) and has not been assigned, licensed, or otherwise transferred to any other party. The Author represents and warrants that the author(s) listed at the top of this Agreement are the only authors of the Materials. If more than one author is listed at the top of this Agreement and if any such author has not entered into a separate Article and Video License Agreement with JoVE relating to the Materials, the Author represents and warrants that the Author has been authorized by each of the other such authors to execute this Agreement on his or her behalf and to bind him or her with respect to the terms of this Agreement as if each of them had been a party hereto as an Author. The Author warrants that the use, reproduction, distribution, public or private performance or display, and/or modification of all or any portion of the Materials does not and will not violate, infringe and/or misappropriate the patent, trademark, intellectual property or other rights of any third party. The Author represents and warrants that it has and will continue to comply with all government, institutional and other regulations, including, without limitation all institutional, laboratory, hospital, ethical, human and animal treatment, privacy, and all other rules, regulations, laws, procedures or guidelines, applicable to the Materials, and that all research involving human and animal subjects has been approved by the Author's relevant institutional review board.

10. JoVE Discretion. If the Author requests the assistance of JoVE in producing the Video in the Author's facility, the Author shall ensure that the presence of JoVE employees, agents or independent contractors is in accordance with the relevant regulations of the Author's institution. If more than one author is listed at the beginning of this Agreement, JoVE may, in its sole discretion, elect not take any action with respect to the Article until such time as it has received complete, executed Article and Video License Agreements from each such author. JoVE reserves the right, in its absolute and sole discretion and without giving any reason therefore, to accept or decline any work submitted to JoVE. JoVE and its employees, agents and independent contractors shall have



## ARTICLE AND VIDEO LICENSE AGREEMENT

full, unfettered access to the facilities of the Author or of the Author's institution as necessary to make the Video, whether actually published or not. JoVE has sole discretion as to the method of making and publishing the Materials, including, without limitation, to all decisions regarding editing, lighting, filming, timing of publication, if any, length, quality, content and the like.

11. **Indemnification.** The Author agrees to indemnify JoVE and/or its successors and assigns from and against any and all claims, costs, and expenses, including attorney's fees, arising out of any breach of any warranty or other representations contained herein. The Author further agrees to indemnify and hold harmless JoVE from and against any and all claims, costs, and expenses, including attorney's fees, resulting from the breach by the Author of any representation or warranty contained herein or from allegations or instances of violation of intellectual property rights, damage to the Author's or the Author's institution's facilities, fraud, libel, defamation, research, equipment, experiments, property damage, personal injury, violations of institutional, laboratory, hospital, ethical, human and animal treatment, privacy or other rules, regulations, laws, procedures or guidelines, liabilities and other losses or damages related in any way to the submission of work to JoVE, making of videos by JoVE, or publication in JoVE or elsewhere by JoVE. The Author shall be responsible for, and shall hold JoVE harmless from, damages caused by lack of sterilization, lack of cleanliness or by contamination due to the making of a video by JoVE its employees, agents or independent contractors. All sterilization, cleanliness or decontamination procedures shall be solely the responsibility of the Author and shall be undertaken at the Author's


expense. All indemnifications provided herein shall include JoVE's attorney's fees and costs related to said losses or damages. Such indemnification and holding harmless shall include such losses or damages incurred by, or in connection with, acts or omissions of JoVE, its employees, agents or independent contractors.

12. **Fees.** To cover the cost incurred for publication, JoVE must receive payment before production and publication the Materials. Payment is due in 21 days of invoice. Should the Materials not be published due to an editorial or production decision, these funds will be returned to the Author. Withdrawal by the Author of any submitted Materials after final peer review approval will result in a US\$1,200 fee to cover pre-production expenses incurred by JoVE. If payment is not received by the completion of filming, production and publication of the Materials will be suspended until payment is received.

13. **Transfer, Governing Law.** This Agreement may be assigned by JoVE and shall inure to the benefits of any of JoVE's successors and assignees. This Agreement shall be governed and construed by the internal laws of the Commonwealth of Massachusetts without giving effect to any conflict of law provision thereunder. This Agreement may be executed in counterparts, each of which shall be deemed an original, but all of which together shall be deemed to be one and the same agreement. A signed copy of this Agreement delivered by facsimile, e-mail or other means of electronic transmission shall be deemed to have the same legal effect as delivery of an original signed copy of this Agreement.

A signed copy of this document must be sent with all new submissions. Only one Agreement required per submission.

### CORRESPONDING AUTHOR:

Name:	Melanie Ecker	
Department:	Center for Engineering Innovation	
Institution:	The University of Texas at Dallas	
Article Title:	The use of environmental dynamic mechanical analysis to predict the softening behavior of neural implants	
Signature:		Date: 10/05/2018

Please submit a signed and dated copy of this license by one of the following three methods:

- 1) Upload a scanned copy of the document as a pdf on the JoVE submission site;
- 2) Fax the document to +1.866.381.2236;
- 3) Mail the document to JoVE / Attn: JoVE Editorial / 1 Alewife Center #200 / Cambridge, MA 02139

For questions, please email [submissions@jove.com](mailto:submissions@jove.com) or call +1.617.945.9051

## Answers to the Editors and to the Reviewers:

### Editorial comments:

Changes to be made by the author(s) regarding the manuscript:

1. Please take this opportunity to thoroughly proofread the manuscript to ensure that there are no spelling or grammar issues. **Checked**
2. Please obtain explicit copyright permission to reuse any figures from a previous publication. Explicit permission can be expressed in the form of a letter from the editor or a link to the editorial policy that allows re-prints. Please upload this information as a .doc or .docx file to your Editorial Manager account. The Figure must be cited appropriately in the Figure Legend, i.e. "This figure has been modified from [citation]." **Permission to reproduce Figures 1 and 7 are attached**
3. Please remove the embedded figure(s) from the manuscript. Please include all the Figure Legends together at the end of the Representative Results in the manuscript text. **Figures and captions are at the end of the Representative Results section**
4. Figure 1: Please include a title for the figure. **All figures have captions**
5. Figure 2: Please explain what panels A and B are. **Added an explanation**
6. Please provide an email address for each author. **Added email addresses**
7. Keywords: Please provide at least 6 keywords or phrases. **Added 2 more keywords**
8. Please adjust the numbering of the Protocol to follow the JoVE Instructions for Authors. For example, 1 should be followed by 1.1 and then 1.1.1 and 1.1.2 if necessary. Please refrain from using bullets, dashes, or indentations. **Changed accordingly**
9. JoVE cannot publish manuscripts containing commercial language. This includes trademark symbols (™), registered symbols (®), and company names before an instrument or reagent. Please remove all commercial language from your manuscript and use generic terms instead. All commercial products should be sufficiently referenced in the Table of Materials and Reagents. You may use the generic term followed by "(see table of materials)" to draw the readers' attention to specific commercial names. Examples of commercial sounding language in your manuscript are: Laurell, UVP CL-1000, Gravograph, PlasmaTherm, Technics RIE, TA Instruments, ORIGIN Pro, IGOR, etc. **Commercial Language was removed**
10. Please revise the protocol text to avoid the use of any personal pronouns (e.g., "we", "you", "our" etc.). **Changed accordingly**
11. Please revise the protocol to contain only action items that direct the reader to do something (e.g., "Do this," "Ensure that," etc.). The actions should be described in the imperative tense in complete sentences wherever possible. Avoid usage of phrases such as "could be," "should be," and "would be" throughout the Protocol. Any text that cannot be written in the imperative tense may be added as a "Note." Please include all safety procedures and use of hoods, etc. However, notes should be used sparingly and actions should be described in the imperative tense wherever possible. Please move the discussion about the protocol to the Discussion. **Changed accordingly**
12. 1.2: Please specify the spin speeds and times used in this step. **We have added Figure 2 showing spin curves and have added the spin speed for one thickness as an example.**
13. 4.1: Please point out the specific steps that are being repeated here. **The protocol was revised**
14. Please include single-line spaces between all paragraphs, headings, steps, etc. **Spaces were added**
15. After you have made all the recommended changes to your protocol (listed above), please

highlight 2.75 pages or less of the Protocol (including headings and spacing) that identifies the essential steps of the protocol for the video, i.e., the steps that should be visualized to tell the most cohesive story of the Protocol. **Parts have been highlighted in yellow.**

16. Please highlight complete sentences (not parts of sentences). Please ensure that the highlighted part of the step includes at least one action that is written in imperative tense.

17. Please include all relevant details that are required to perform the step in the highlighting. For example: If step 2.5 is highlighted for filming and the details of how to perform the step are given in steps 2.5.1 and 2.5.2, then the sub-steps where the details are provided must be highlighted. **Steps 2.2.x and 2.3.x were not highlighted, because they include only detailed measuring parameters. Including them would exceed the 2.75 page limit.**

18. Discussion: As we are a methods journal, please also discuss critical steps within the protocol and any limitations of the technique. **Additional limitations were added.**

19. Reference 1: Please do not abbreviate journal titles. **Changed accordingly**

20. Table of Equipment and Materials: Please remove trademark (™) and registered (®) symbols. Please sort the items in alphabetical order according to the Name of Material/Equipment. **Trademarks were removed and items were ordered in alphabetical order.**

## **Reviewers' comments:**

### **Reviewer #1:**

Manuscript Summary:

The article presents a new in-situ method for characterisation of implant materials. Although compatible tests machines are commercial available for such tests, the simple modification a "standard DMA" machine is convincing. The visual presentation is plausible.

Minor Concerns:

Please introduce the abbreviation DMA in abstract and introduction. **We have added this accordingly.**

1. 209 - 212: Please comment the limitation of the machine for testing only of specific samples geometries. Mark this part less general.

**We have added the following paragraph to the Discussion section: "The herein described results were measured on polymer films in tension mode. However, the environmental DMA is also capable of measurements in compression and in shear when using the respective fixture, and therefore allows for the measurement of other sample geometries as well. It should be noted that the available space inside the immersion beaker is limited and therefore the size of samples used for measurements inside this beaker are restricted by that size.**

**Another limitation of this method is that the load cell which is used to detect the forces generated by the samples during the measurement (in dry and in wet conditions). The load cell can only measure forces up to 35 N and therefore limits the sample size/geometry as well."**

### **Reviewer #2:**

Manuscript Summary:

The manuscript discusses an experimental protocol for in vitro dynamic mechanical analysis of polymers for neural implants. The authors' work is based on their previous work on shape memory polymer-based implants and here they show how the softening of these polymers can be characterized experimentally. The in vitro approach could help predict softening of the

polymers in vivo. This is a well written manuscript, but this reviewer did have some concerns which the authors may want to address.

#### Major Concerns:

1. Protocol Step 1.2: Authors could give an idea (perhaps in the form of a plot) about the relationship between spin speeds/time and viscosity/thickness. We have added Figure 2 showing spin curves and have added the spin speed for one thickness as an example.
2. Protocol Step 3.4: Authors could elaborate on this step. Video would probably be helpful, but Figure 3C is difficult to understand and so could be replaced with a magnified image. In addition, it could be supplemented with an image of a centered and properly aligned specimen. We have added Figure 5 showing the correct alignment of the sample.
3. Authors could comment on how the corresponding variation in softening would be for an in vivo medium considering the difference in medium environment. We have added the following paragraph to the Discussion section: "However, measuring in PBS is just one approach to mimic the biological environments. In vivo conditions may vary in many aspects, such as ion concentrations, availability of antibodies, proteins, and other species inside the biological medium/tissue. Depending on the targeted area, one could also consider using different media for the environmental measurements, such as tris-buffered saline (TBS), TBS-T (TBS with Polysorbate 20), Bovine serum albumin (BSA), Cerebrospinal fluid (CSF), or other body fluids."

#### Minor Concerns:

4. Two sessions of measurements take place, one in PBS (Protocol Step 4.1) and two in air (Protocol Step 4.2). Measurement as stated in Protocol Step 4.1 supposedly takes place after Protocol Step 3.5. The step saying "following the above mentioned procedures" sounds a little confusing. The protocol was revised. Dry and wet measurements are now two separate sections.
5. Please update reference 9 since it has already been published. Reference was updated.

**JOHN WILEY AND SONS LICENSE  
TERMS AND CONDITIONS**

Nov 19, 2018

This Agreement between University of Texas at Dallas -- Melanie Ecker ("You") and John Wiley and Sons ("John Wiley and Sons") consists of your license details and the terms and conditions provided by John Wiley and Sons and Copyright Clearance Center.

License Number	4470900138905
License date	Nov 16, 2018
Licensed Content Publisher	John Wiley and Sons
Licensed Content Publication	Macromolecular Materials & Engineering
Licensed Content Title	Sterilization of Thiol-ene/Acrylate Based Shape Memory Polymers for Biomedical Applications
Licensed Content Author	Melanie Ecker, Vindhya Danda, Andrew J. Shoffstall, et al
Licensed Content Date	Oct 12, 2016
Licensed Content Volume	302
Licensed Content Issue	2
Licensed Content Pages	10
Type of use	Journal/Magazine
Requestor type	Author of this Wiley article
Is the reuse sponsored by or associated with a pharmaceutical or medical products company?	no
Format	Electronic
Portion	Figure/table
Number of figures/tables	2
Original Wiley figure/table number(s)	Figure 5 and adapted Figure 7
Will you be translating?	No
Circulation	500
Title of new article	The use of environmental dynamic mechanical analysis to predict the softening behavior of neural implants
Publication the new article is in	JoVE JOURNAL BIOENGINEERING
Publisher of new article	Journal of Visualized Experiments
Author of new article	Melanie Ecker
Expected publication date of new article	Mar 2019
Estimated size of new article (pages)	10
Requestor Location	University of Texas at Dallas 800 West Campbell Road  RICHARDSON, TX 75080 United States Attn: Melanie Ecker
Publisher Tax ID	EU826007151
Total	0.00 USD
Terms and Conditions	

**TERMS AND CONDITIONS**

This copyrighted material is owned by or exclusively licensed to John Wiley & Sons, Inc. or one of its group companies (each a "Wiley Company") or handled on behalf of a society with which a Wiley Company has exclusive publishing rights in relation to a particular work (collectively "WILEY"). By clicking "accept" in connection with completing this licensing transaction, you agree that the following terms and conditions apply to this transaction

(along with the billing and payment terms and conditions established by the Copyright Clearance Center Inc., ("CCC's Billing and Payment terms and conditions"), at the time that you opened your RightsLink account (these are available at any time at <http://myaccount.copyright.com>).

## Terms and Conditions

- The materials you have requested permission to reproduce or reuse (the "Wiley Materials") are protected by copyright.
- You are hereby granted a personal, non-exclusive, non-sub licensable (on a stand-alone basis), non-transferable, worldwide, limited license to reproduce the Wiley Materials for the purpose specified in the licensing process. This license, **and any CONTENT (PDF or image file) purchased as part of your order**, is for a one-time use only and limited to any maximum distribution number specified in the license. The first instance of republication or reuse granted by this license must be completed within two years of the date of the grant of this license (although copies prepared before the end date may be distributed thereafter). The Wiley Materials shall not be used in any other manner or for any other purpose, beyond what is granted in the license. Permission is granted subject to an appropriate acknowledgement given to the author, title of the material/book/journal and the publisher. You shall also duplicate the copyright notice that appears in the Wiley publication in your use of the Wiley Material. Permission is also granted on the understanding that nowhere in the text is a previously published source acknowledged for all or part of this Wiley Material. Any third party content is expressly excluded from this permission.
- With respect to the Wiley Materials, all rights are reserved. Except as expressly granted by the terms of the license, no part of the Wiley Materials may be copied, modified, adapted (except for minor reformatting required by the new Publication), translated, reproduced, transferred or distributed, in any form or by any means, and no derivative works may be made based on the Wiley Materials without the prior permission of the respective copyright owner. **For STM Signatory Publishers clearing permission under the terms of the [STM Permissions Guidelines](#) only, the terms of the license are extended to include subsequent editions and for editions in other languages, provided such editions are for the work as a whole in situ and does not involve the separate exploitation of the permitted figures or extracts**, You may not alter, remove or suppress in any manner any copyright, trademark or other notices displayed by the Wiley Materials. You may not license, rent, sell, loan, lease, pledge, offer as security, transfer or assign the Wiley Materials on a stand-alone basis, or any of the rights granted to you hereunder to any other person.
- The Wiley Materials and all of the intellectual property rights therein shall at all times remain the exclusive property of John Wiley & Sons Inc, the Wiley Companies, or their respective licensors, and your interest therein is only that of having possession of and the right to reproduce the Wiley Materials pursuant to Section 2 herein during the continuance of this Agreement. You agree that you own no right, title or interest in or to the Wiley Materials or any of the intellectual property rights therein. You shall have no rights hereunder other than the license as provided for above in Section 2. No right, license or interest to any trademark, trade name, service mark or other branding ("Marks") of WILEY or its licensors is granted hereunder, and you agree that you shall not assert any such right, license or interest with respect thereto
- NEITHER WILEY NOR ITS LICENSORS MAKES ANY WARRANTY OR REPRESENTATION OF ANY KIND TO YOU OR ANY THIRD PARTY, EXPRESS, IMPLIED OR STATUTORY, WITH RESPECT TO THE MATERIALS OR THE ACCURACY OF ANY INFORMATION CONTAINED IN THE MATERIALS, INCLUDING, WITHOUT LIMITATION, ANY IMPLIED WARRANTY OF MERCHANTABILITY, ACCURACY, SATISFACTORY QUALITY, FITNESS FOR A PARTICULAR PURPOSE, USABILITY, INTEGRATION OR NON-INFRINGEMENT AND ALL SUCH WARRANTIES ARE HEREBY EXCLUDED BY WILEY AND ITS LICENSORS AND WAIVED BY YOU.
- WILEY shall have the right to terminate this Agreement immediately upon breach of this Agreement by you.
- You shall indemnify, defend and hold harmless WILEY, its Licensors and their respective directors, officers, agents and employees, from and against any actual or

threatened claims, demands, causes of action or proceedings arising from any breach of this Agreement by you.

- IN NO EVENT SHALL WILEY OR ITS LICENSORS BE LIABLE TO YOU OR ANY OTHER PARTY OR ANY OTHER PERSON OR ENTITY FOR ANY SPECIAL, CONSEQUENTIAL, INCIDENTAL, INDIRECT, EXEMPLARY OR PUNITIVE DAMAGES, HOWEVER CAUSED, ARISING OUT OF OR IN CONNECTION WITH THE DOWNLOADING, PROVISIONING, VIEWING OR USE OF THE MATERIALS REGARDLESS OF THE FORM OF ACTION, WHETHER FOR BREACH OF CONTRACT, BREACH OF WARRANTY, TORT, NEGLIGENCE, INFRINGEMENT OR OTHERWISE (INCLUDING, WITHOUT LIMITATION, DAMAGES BASED ON LOSS OF PROFITS, DATA, FILES, USE, BUSINESS OPPORTUNITY OR CLAIMS OF THIRD PARTIES), AND WHETHER OR NOT THE PARTY HAS BEEN ADVISED OF THE POSSIBILITY OF SUCH DAMAGES. THIS LIMITATION SHALL APPLY NOTWITHSTANDING ANY FAILURE OF ESSENTIAL PURPOSE OF ANY LIMITED REMEDY PROVIDED HEREIN.
- Should any provision of this Agreement be held by a court of competent jurisdiction to be illegal, invalid, or unenforceable, that provision shall be deemed amended to achieve as nearly as possible the same economic effect as the original provision, and the legality, validity and enforceability of the remaining provisions of this Agreement shall not be affected or impaired thereby.
- The failure of either party to enforce any term or condition of this Agreement shall not constitute a waiver of either party's right to enforce each and every term and condition of this Agreement. No breach under this agreement shall be deemed waived or excused by either party unless such waiver or consent is in writing signed by the party granting such waiver or consent. The waiver by or consent of a party to a breach of any provision of this Agreement shall not operate or be construed as a waiver of or consent to any other or subsequent breach by such other party.
- This Agreement may not be assigned (including by operation of law or otherwise) by you without WILEY's prior written consent.
- Any fee required for this permission shall be non-refundable after thirty (30) days from receipt by the CCC.
- These terms and conditions together with CCC's Billing and Payment terms and conditions (which are incorporated herein) form the entire agreement between you and WILEY concerning this licensing transaction and (in the absence of fraud) supersedes all prior agreements and representations of the parties, oral or written. This Agreement may not be amended except in writing signed by both parties. This Agreement shall be binding upon and inure to the benefit of the parties' successors, legal representatives, and authorized assigns.
- In the event of any conflict between your obligations established by these terms and conditions and those established by CCC's Billing and Payment terms and conditions, these terms and conditions shall prevail.
- WILEY expressly reserves all rights not specifically granted in the combination of (i) the license details provided by you and accepted in the course of this licensing transaction, (ii) these terms and conditions and (iii) CCC's Billing and Payment terms and conditions.
- This Agreement will be void if the Type of Use, Format, Circulation, or Requestor Type was misrepresented during the licensing process.
- This Agreement shall be governed by and construed in accordance with the laws of the State of New York, USA, without regards to such state's conflict of law rules. Any legal action, suit or proceeding arising out of or relating to these Terms and Conditions or the breach thereof shall be instituted in a court of competent jurisdiction in New York County in the State of New York in the United States of America and each party hereby consents and submits to the personal jurisdiction of such court, waives any objection to venue in such court and consents to service of process by registered or certified mail, return receipt requested, at the last known address of such party.



**WILEY OPEN ACCESS TERMS AND CONDITIONS**

Wiley Publishes Open Access Articles in fully Open Access Journals and in Subscription journals offering Online Open. Although most of the fully Open Access journals publish open access articles under the terms of the Creative Commons Attribution (CC BY) License only, the subscription journals and a few of the Open Access Journals offer a choice of Creative Commons Licenses. The license type is clearly identified on the article.

**The Creative Commons Attribution License**

The [Creative Commons Attribution License \(CC-BY\)](#) allows users to copy, distribute and transmit an article, adapt the article and make commercial use of the article. The CC-BY license permits commercial and non-

**Creative Commons Attribution Non-Commercial License**

The [Creative Commons Attribution Non-Commercial \(CC-BY-NC\) License](#) permits use, distribution and reproduction in any medium, provided the original work is properly cited and is not used for commercial purposes.(see below)

**Creative Commons Attribution-Non-Commercial-NoDerivs License**

The [Creative Commons Attribution Non-Commercial-NoDerivs License](#) (CC-BY-NC-ND) permits use, distribution and reproduction in any medium, provided the original work is properly cited, is not used for commercial purposes and no modifications or adaptations are made. (see below)

**Use by commercial "for-profit" organizations**

Use of Wiley Open Access articles for commercial, promotional, or marketing purposes requires further explicit permission from Wiley and will be subject to a fee.

Further details can be found on Wiley Online Library

<http://olabout.wiley.com/WileyCDA/Section/id-410895.html>

**Other Terms and Conditions:**

**v1.10 Last updated September 2015**

**Questions? [customercare@copyright.com](mailto:customercare@copyright.com) or +1-855-239-3415 (toll free in the US) or +1-978-646-2777.**