

Journal of Visualized Experiments

A High-Throughput Shigella-specific Bactericidal Assay

--Manuscript Draft--

Article Type:	Invited Methods Article - JoVE Produced Video
Manuscript Number:	JoVE59164R1
Full Title:	A High-Throughput Shigella-specific Bactericidal Assay
Keywords:	Shigella; antibody; functional assay; Immunoassay; Complement; Bactericidal; High-throughput; immunology; Immunoglobulins
Corresponding Author:	Robert W. Kaminski Walter Reed Army Institute of Research Silver spring, MD UNITED STATES
Corresponding Author's Institution:	Walter Reed Army Institute of Research
Corresponding Author E-Mail:	robert.w.kaminski.civ@mail.mil
Order of Authors:	Hailey P. Weerts Jigui Yu Robert W. Kaminski Moon H. Nahm
Additional Information:	
Question	Response
Please indicate whether this article will be Standard Access or Open Access.	Open Access (US\$4,200)
Please indicate the city, state/province, and country where this article will be filmed . Please do not use abbreviations.	Silver Spring, MD, USA

September 5, 2018

Journal of Visualized Experiments
Peer Review Board
1 Alewife Center, Suite 200
Cambridge, MA 02140

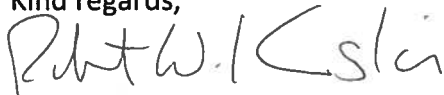
Dear Jaydev Upponi,

Please accept our submission of a manuscript entitled "A Simple, High-Throughput *Shigella* Serum Bactericidal Assay" for publication consideration in JoVE. The manuscript has been formatted per the JoVE guidelines.

The manuscript describes work that has been conducted on the development of a high throughput serum bactericidal assay capable of accurately and reproducibly quantifying functional capacity of antibodies specific for *Shigella*. The protocol details the steps necessary to successfully complete the bactericidal assay. The assay's format allows rapid evaluation of serum and is conducted with minimal instrumentation, facilitating global use. The assay will provide tremendous benefit to the *Shigella* vaccine development field and can be expanded to evaluate bactericidal activity against other bacterial pathogens, widening the breadth of applicability across multiple scientific disciplines.

We appreciate your consideration for publication in JoVE and welcome the opportunity to participate in the peer-review process which guides our scientific endeavors. If there are any questions, please let me know and I will be happy to provide input.

Kind regards,

A handwritten signature in black ink, appearing to read "Robert W. Kaminski". The signature is fluid and cursive, with the first name "Robert" and last name "Kaminski" clearly distinguishable.

Robert W. Kaminski

Chief
Subunit Enteric Vaccines and Immunology
Department of Enteric Infections
Bacterial Diseases Branch
Walter Reed Army Institute of Research

TITLE:

A High-Throughput *Shigella*-specific Bactericidal Assay

AUTHORS AND AFFILIATIONS:

Hailey P. Weerts¹, Jigui Yu², Robert W. Kaminski¹, Moon H. Nahm²

¹Department of Enteric Infections, Bacterial Diseases Branch, Walter Reed Army Institute of Research, Silver Spring, Maryland, USA

²University of Alabama at Birmingham, Birmingham, Alabama, USA

Corresponding Author:

Moon H. Nahm (mnaahm@uabmc.edu)

Email Addresses of Co-authors:

Hailey P. Weerts (hailey.p.weerts.ctr@mail.mil)

Jigui Yu (jiguiyu@uabmc.edu)

Robert W. Kaminski (Robert.w.kaminski.civ@mail.mil)

KEYWORDS:

Shigella, antibody, functional assay, immunoassay, complement, bactericidal, high-throughput

SUMMARY:

Here we present a protocol to measure *Shigellacidal* activity of antibodies in serum. Serum is mixed with bacteria and exogenous complement, incubated, and the reaction mixture is plated on agar plates. Viable bacteria form colonies which are counted, using an automated colony enumerator, and used to determine the bactericidal titer.

ABSTRACT:

Serum bactericidal assays (SBAs) measure the functional activity of antibodies and have been used for many decades. SBAs directly measure antibody killing activity by assessing the ability of antibodies in serum to bind to bacteria and activate complement. This complement activation results in the lysis and killing of the target bacteria. These assays are valuable because they go beyond quantifying antibody production to elucidate the biological functions that these antibodies have, allowing researchers to study the role that antibodies may play in preventing infection. SBAs have been used to study immune responses for many human pathogens, but there is no widely accepted methodology for *Shigella* at present. Historically, SBAs have been very labor-intensive, requiring many time-consuming steps to accurately quantify surviving bacteria. This protocol describes a simple, robust, and high-throughput assay that measures functional antibodies specific for *Shigella* in serum *in vitro*. The method described here offers many advantages over traditional SBAs, including the use of frozen bacterial stocks, 96 well assay plates, a micro-culture system, and automated colony-counting. All of these modifications make this assay less labor-intensive and more high-throughput. This protocol is simpler and faster to perform than traditional SBAs while still using simple technologies and readily available reagents. The protocol has been successfully applied in multiple independent laboratories and the assay is

robust and reproducible. The assay can be used to assess immune responses in pre-clinical as well as clinical studies. Quantifying shigellacidal antibody titers both before and after antigen exposure (either by immunization or infection) allows for a broader understanding of how functional antibody responses are generated and their contribution to protective immunity. The development of this standardized, well-characterized assay may greatly facilitate *Shigella* vaccine design.

INTRODUCTION:

Shigella serotypes, *Shigella flexneri* 2a, *S. flexneri* 3a, and *S. sonnei*, demonstrate epidemiological prevalence globally. The diarrheal disease caused by these *Shigella* species impacts military, travelers¹, and is a leading cause of diarrheal death among children under the age of 5 in developing countries². There are currently no licensed vaccines to protect against *Shigella*, however, there are multiple candidate vaccines at various stages of the development. Many of these vaccines, and other prophylactic measures currently in development, focus on antibodies produced against *Shigella* lipopolysaccharide (LPS). LPS is an attractive vaccine candidate because it is a major surface antigen and natural infection with *Shigella* induces LPS-specific antibodies that can be protective against re-infection in a serotype-specific manner. Therefore, a successful *Shigella* vaccine will likely need to be multi-valent and target 3-4 *Shigella* serotypes to induce immunity against 70-80% of globally circulating strains³⁻⁶. This requires that assays to evaluate *Shigella* vaccine candidates be specific for multiple different serotypes.

Current immunological assays for evaluating vaccine candidates focus on quantifying levels of antibody titers, but there are few well-characterized assays to evaluate functional antibodies. The examination of antibody functional ability is important because pathogen specific antibodies are responsible for combating infection through a number of functional mechanisms including binding bacteria surface antigens, and preventing adhesion to and infection of epithelial cells, targeting bacterial cells or opsonization and phagocytosis, and directly killing pathogens by binding and initiating the complement cascade. The direct killing of bacteria by antibodies occurs when antibodies bind to surface components of the target bacteria and initiate the complement cascade leading to the activation of many zymogens that ultimately result in pore formation in the bacterial cell that causes lysis and bacterial death. This direct killing of bacteria by circulating antibodies and complement may be a crucial early line of defense during infection.

Individuals who are naturally infected have antibodies with shigellacidal activity in their sera. These *Shigella*-specific antibodies were detected using traditional complement-mediated killing assays^{7,8}. This indicates that there may be a role for bactericidal antibodies in protection against *Shigella*. Traditional bactericidal assays are simple in their execution: serum is heat-inactivated (to destroy endogenous complement activity) and mixed with the bacteria of interest. Exogenous complement is added to this mixture at a specific concentration. The reaction mixture is incubated to allow for bacterial killing and then plated to confirm colony-forming units (CFUs). Once CFUs are counted, a 50% killing index (KI) can be calculated and an SBA titer determined. While this procedure is relatively simple, these assays can be labor-intensive and time-consuming to perform and the results can be highly variable. In addition to these limitations, no well characterized functional assays currently exist for *Shigella*. Therefore, we have successfully

developed and qualified a simple, high-throughput assay to measure *Shigella* bactericidal activity for three of the most clinically relevant strains⁹. This protocol describes an SBA with modifications that improve assay efficiency and reproducibility. The first of these modifications is the use of frozen bacterial stocks. The production of single use stocks eliminates the need to culture fresh bacteria for each assay while also reducing assay-to-assay variability. Another time and labor saving advantage of this protocol is the use of a 96-well plate assay format. This allows for serial dilution of samples so that a range of concentrations can be tested. It also allows for the use of multichannel pipettes for plating samples on square Petri dishes. When these square Petri dishes are used in conjunction with a culture system that produces micro-colonies, the number of agar plates required for the assay is reduced. This, in combination with freely available colony-counting software, originally developed for the pneumococcal multiplexed opsonophagocytic killing assay (MOPA)¹⁰, allows for the rapid, automated, and reliable colony enumeration. All of these improvements significantly reduce hands-on assay time and creating a high-throughput system allowing for multiple plates to be run at once.

While this protocol has been optimized for three of the most clinically relevant serotypes of *Shigella*, the SBA described here can be easily applied to many other bacterial pathogens. In addition to this protocol's potential use with other bacteria, this protocol has the potential to expand beyond using only serum as a starting material, which could include the analysis of antibodies in other relevant sample types such as mucosal samples, including saliva and fecal samples. The use of this assay to investigate immunological responses after vaccination may give broader insight into immune responses generated by vaccination leading to the rational design of vaccines, and aid in the understanding of how natural immunity develops.

PROTOCOL:

This protocol follows the guidelines of the WRAIR Human Subject's Protection Board. Samples used in this study are human serum samples collected as part of WRAIR protocol number 1328, in compliance with all institutional and federal regulations governing the protection of human subjects. Samples were de-identified, and the use of these anonymous samples was classified as non-human subject research by the UAB IRB (protocol number N150115001).

1. Prepare Assay Reagents

1.1 Prepare 1% Gelatin by adding 1 g of gelatin to 100 mL of water. Autoclave and store at room temperature.

1.2 Prepare 100 mg/mL TTC (2,3,5-Triphenyltetrazolium chloride) stock solution (1000x) by adding 5 g of TTC to 40 mL water. When the TTC is fully dissolved, adjust the volume to 50 mL with water and sterile filter using 0.2 µm filter. Store the solution at 4 °C and protect from light.

NOTE: TTC colorizes the bacterial colonies and makes them much easier to count. TTC solution has a slight yellow color. If TTC solution develops a red color, discard and prepare fresh.

1.3 Prepare 10% sodium azide (NaN_3) stock solution (100x) by adding 5 g NaN_3 to 40 mL of water. After complete dissolution, add water to 50 mL. Store at room temperature.

CAUTION: Sodium azide is a poison and may be toxic if ingested or absorbed through the skin or eyes. It may react with lead and copper plumbing to form highly explosive metal azides. On disposal of reagents containing sodium azide, flush with a large volume of water to prevent azide build-up or discard in a biohazard bag

1.4 Prepare LBA plate (LB agar plate) by adding 35 g of LB agar to 1 L of water and autoclave. Add 25 mL to each square petri dish (120 x 120 mm). Incubate plates at RT for 10-20 min to allow agar to solidify. Place plates back into plastic bags and store at 4 °C for up to 1 month.

1.5 Prepare Overlay Agar by adding 7.5 g of agar to 1000 mL of water and autoclave. Incubate in 56 °C water bath until needed. Right before use, add 1 mL of 100 mg/mL TTC and 10 mL of 10% NaN_3 and mix well.

NOTE: Each LBA plate needs 25 mL of Overlay Agar. Overlay Agar can be prepared up to one month in advance and melted in a microwave or on a hot plate as needed for the assay. Ensure that agar temperature is ~55 °C before application to LBA plates.

1.6 Prepare Assay Buffer by adding 5 mL of 10X Hanks's Balanced Salt Solution (HBSS) with $\text{Ca}^{2+}/\text{Mg}^{2+}$ and 5 mL of 1% gelatin to 40 mL of water. Store at room temperature.

2. Prepare Complement and Target Bacteria

2.1 Prepare baby rabbit complement (BRC)

Note: Detailed criteria for complement lot selection can be found here: <https://www.vaccine.uab.edu/uploads/mdocs/UAB-MOPA.pdf>

2.1.1 Obtain frozen BRC and thaw with running cold water. Physically mix the BRC every ~10-20 min until completely thawed. Do not subject BRC to repeated freeze thaw cycles.

2.1.2 While BRC is thawing, label 1.5 mL, 5mL, or 15 mL centrifuge tubes. Place labeled tubes on ice to pre-cool. Aliquot proper volume BRC to the pre-cooled centrifuge tubes (after filling, immediately return each tube to the ice). Store aliquots at ≤ -70 °C in the freezer.

NOTE: Approximately 1 mL of complement is needed for each assay plate. Complement aliquots are for single use and should be aliquoted in volumes appropriate to assay layouts.

2.1.3 To prepare Heat-inactivated BRC, thaw one aliquot of active BRC. Prepare a 56 °C water bath. After BRC is completely thawed, transfer it to the water bath and incubate for 30 min.

2.1.4 After incubation, remove heat-inactivated BRC from the water bath and allow to cool at RT for 10-15 min. Mix vigorously, and aliquot ~150 µL to 1.5 mL microcentrifuge tubes. Store aliquots at $\leq -10^{\circ}\text{C}$

2.2 Prepare target bacteria stock

NOTE: The procedure below is used to prepare 48 aliquots of target bacteria stock; if more aliquots are needed the protocol can be scaled up.

2.2.1 Remove the bacteria master stock vial from the freezer and scrape the frozen bacterial surface to remove a small amount of ice from the vial onto a blood agar plate. Immediately return the master stock vial to the freezer.

2.2.2 Streak this thawed aliquot of bacterial stock onto the blood agar plate and cover with the plate lid. Incubate the plate upside down overnight in $37^{\circ}\text{C}/5\% \text{CO}_2$ incubator.

2.2.3 Transfer ~10 isolated smooth colonies to a 50 mL tube containing 30 mL of LB broth. Incubate for 3-5 h at 37°C with gentle shaking until the culture broth has an OD_{600} of ~0.6 - 0.7.

2.2.4 Harvest the top 12.5 mL of the culture and transfer to a fresh 50 mL tube. Centrifuge the culture at $15,000 \times g$ for 2 min using a table top micro-centrifuge. Discard the supernatant and re-suspend the pellet in 25 mL of 15% sterile glycerol-LB.

2.2.5 Mix well and dispense 0.5 mL aliquots into sterile 1.5 mL micro centrifuge tubes (~ 48 tubes). Store aliquots at $\leq -70^{\circ}\text{C}$ in freezer.

2.2.6 Confirm the bacterial identity using the agglutination test before use.

2.3 Determination of optimal dilution factor for target bacteria stock

NOTE: Each batch of target bacteria stock must be titrated in assay conditions to determine the dilution necessary to yield ~120 CFU/spot on LB plates.

2.3.1 Get a microtiter plate (Dilution Plate) and add 135 µL of Assay Buffer to well 1A. Add 120 µL of Assay butter to wells 1B-1H.

2.3.2 Remove a vial of frozen target bacteria from the freezer and thaw at room temperature. Add 15ul of thawed bacterial stock to well 1A to make a 10-fold dilution of the bacterial stock.

2.3.3 Transfer 30 µL of bacterial solution from well 1A to well 1B to perform a 5-fold serial dilution. Continue 5-fold serial dilutions to well 1H for a total of 8 dilutions (1:10; 1:50; 1:250; 1:1 250; 1:6 250; 1: 31 250; 1: 156 250; 1:781 250).

2.3.4 Get another microtiter plate (Assay Plate) and add 20 μ L of Assay Buffer to all well in columns 1 and 2 in the Assay Plate.

2.3.5 Transfer 10 μ L of diluted bacteria from each well in column 1 of the Dilution plate into the corresponding wells in columns 1 and 2 of the Assay Plate. 10 μ L of bacteria is transferred from well 1A of the dilution plate into well 1A and 2A in the Assay Plate, etc.

2.3.6 Continue with the assay as described in Serum Bactericidal Assay (SBA) below for Control A and Control B, steps 3.6-3.12.

2.3.7 After the plates have been incubated on ice, use a multichannel pipette with 8 pipette tips to spot 10 μ L from the wells in column 1 onto an LBA plate. Also, spot the wells from column 2 onto the LBA plate.

2.3.8 Continue with the assay as described below in steps 3.14-4.6.

2.3.9 Determine the bacteria dilution that yields \sim 120 CFU/spot in Control B, this dilution will be used in the assay.

3. Serum Bactericidal Assay (SBA)

NOTE: The procedure described below is for one assay plate, but the number of Assay Plates can be increased.

3.1 Heat-inactivate test samples by incubating samples in a 56 $^{\circ}$ C water bath for 30 min.

NOTE: Test samples must be heat-inactivated prior to the test to abrogate any endogenous complement activity. This can be done ahead of the assay and inactivated samples can be re-frozen or stored at 4 $^{\circ}$ C until tested.

3.2 Get an Assay Plate and add 20 μ L of Assay Buffer to columns 1 through 12 of rows A through G. Add 20 μ L of Assay Buffer to columns 1 and 2 of row H, see **Table 1.**

3.3 Load 30 μ L of each test sample, in duplicate, to row H of the Assay Plate. For example, dispense 30 μ L of sample 1 into wells 3H and 4H, and dispense 30 μ L of sample 2 into wells 5H and 6H, etc.

3.4 Perform 3-fold serial dilutions of test samples using a multichannel pipette.

3.4.1. Remove 10 μ L of the sample from wells 3H-12H and transfer to corresponding wells in row G and mix the sample well by pipetting up and down 8-10 times.

3.4.2. Then remove 10 μ L from well 3G-12G and transfer to corresponding wells in row F and mix well.

3.4.3. Continue these serial dilutions through row A. After mixing the wells in row A, remove and discard 10 μ L from wells 3A-12A so that the final volume in all wells is 20 μ L.

NOTE: Because 20 μ L of serum is used in a total assay volume of 80 μ L, there is a 4-fold additional dilution in the assay. This dilution must be taken into account during the calculation of an SBA titer by multiplying the dilution of serum by 4. For example, if a starting dilution of 1:2 is used, the actual dilution being tested is 1:8.

3.5 Remove one vial of frozen Target Bacteria Stock and thaw at room temperature. Dilute the bacteria in 20 mL of Assay Buffer according to the pre-determined optimal dilution factor (this dilution factor was determined in section 2.3). Add 10 μ L of diluted bacteria to each well of the assay plate using a multichannel pipette.

3.6 Remove one vial of frozen BRC and one vial of frozen Heat-inactivated BRC, thaw at room temperature with running cold water or place on the grate of a biological safety cabinet with blowing air to thaw quickly.

3.7 Prepare a 20% solution of heat-inactivated BRC. Mix 100 μ L of heat-inactivated BRC with 400 μ L of Assay Buffer. Add 50 μ L of this 20% heat-inactivated BRC solution to all wells in column 1 (Control A wells).

NOTE: Heat-inactivated BRC is used as a control to monitor non-specific killing (NSK) in the assay.

3.8 Prepare a 20% solution of native BRC. Mix 1 mL of native BRC with 4 mL of Assay Buffer. Add 50 μ L of this mixture to all wells in columns 2 through 12 (Control B and test sample wells).

NOTE: The final concentration of BRC in the reaction mixture is 12.5%.

3.9 Briefly mix Assay Plate by shaking gently for 10-15 s on a plate shaker or mix by pipetting up and down 8 times using a multichannel pipette.

3.10 Put the Assay Plate in 37 $^{\circ}$ C microbiological incubator for 2 h (without shaking).

3.11 Dry 2 LBA plates by removing lids and placing plates face up in biological safety cabinet for 40-60 min.

3.12 When the 2 h incubation is complete, move the Assay Plate to wet ice and incubate for 10-20 min to stop the reaction.

3.13 Using a 12-channel pipette, mix the wells in row H, and spot plate 10 μ L of the reaction mixture onto the bottom of an LBA plate. Immediately tilt the plate and allow the spots to run

for ~1.5 - 2 cm. Repeat this procedure for row G, F, and E, spotting them above the previous row on the LBA plate. Row E, F, G, and H are spotted onto one LBA plate, and row A, B, C, and D are spotted onto a second LBA plate in the same manner, see **Figure 1**.

3.14 Incubate the LBA plates at room temperature until the solution is adsorbed into the LBA plates (10-15 min). Put the lids on the LBA plates and place the LBA plates in the microbiological incubator upside-down to incubate overnight (~16-18 h). Incubate *S. flexneri* 2a and 3a at 29 °C and incubate *S. sonnei* is at 26 °C.

NOTE: These temperatures yield smaller “micro-colonies” with sizes suitable for accurate counting by a colony counter⁹.

3.15 After overnight incubation, add 25 mL of Overlay Agar (at ~55 °C) containing 100 µg/mL TTC and 0.1% NaN₃ to each LBA plate.

3.16 Incubate the LBA plates at 37 °C for 2 h to allow the surviving bacteria to develop red color, see **Figure 1** below.

3.17 Photograph plates using a digital camera and transfer images to a computer where NIST’s Integrated Colony Enumerating Software (NICE) has been installed, see **Figure 2**.

NOTE: NICE colony-counting software is available at no charge. See www.vaccine.uab.edu for details and installation instructions.

4. Count Bacterial Colonies

4.1 Open NICE Software and input **Operator Name**, **Experiment** information, and any assay **Notes** into the empty fields. Once this data is entered click the **Done** button.

4.2 Import photographed plates by clicking the **Open** button and selecting the correct files from the computer.

4.3 Adjust the assay parameters by setting the number of **Rows** to 4 and the number of **Columns** to 12. Adjust the **Background** setting to -3 sigma and the **Resolution** to Low. See **Figure 2**.

4.4 Move the Regions of Interest (ROIs) by clicking and dragging so that each ROI is directly over one sample spot. Ensure that all bacterial colonies are inside the ROI with no overlap between samples. Once one plate is complete, double click the next plate in the **Stored data** Images list and adjust the ROIs. See **Figure 2**.

4.5 When all plates have been adjusted, click the green **Count** button, see **Figure 2** and **Figure 3**. When counting is finished click the **Export** button to export the data in .xls/.xlsx format. Name and save the .xls/.xlsx file for data analysis.

4.6 Arrange exported data into a table format so that counts are organized in a table representing the 96-well assay plate, see **Table 2**.

5. Calculate SBA Titer (KI) and Non-Specific Killing (NSK)

NOTE: SBA titer, or killing index (KI) is defined as the reciprocal of the serum dilution that kills 50% of the target bacteria.

5.1 Calculate the 50% killing index (KI) cutoff value by averaging the CFU of active complement control wells (Control B) and dividing by 2. Calculate the average CFU for each dilution of each sample that was run in duplicate, see **Table 3**.

5.2 Because a serum dilution will rarely yield exactly this 50% KI value, it can be interpolated from two sequential serum dilutions, one that kills less than 50% and one that kills more than 50%, see **Figure 4**. The formula for calculating the interpolated SBA KI is shown below:

$$\text{SBA KI} = 10^{\left[\log X_1 + \frac{(Y_{50} - Y_1) \times (\log X_2 - \log X_1)}{(Y_2 - Y_1)}\right]}$$

NOTE: The bactericidal titer, or KI, can also be calculated automatically using Opsotiter software developed by UAB. To Request Opsotiter, contact Dr. Moon Nahm or Mr. Rob Burton. See <https://www.vaccine.uab.edu> for contact information.

5.3 Calculate the NSK value by taking 1 minus the average of Control B divided by the average of Control A

REPRESENTATIVE RESULTS:

A 96-well plate layout used in a typical assay is shown in **Table 1**. This layout has the active complement control wells (Control B), the heat-inactivated complement control wells (Control A), and five samples in duplicate. Samples are serially diluted 3-fold up the plate from Row H to Row A allowing for 8 dilutions of each sample to be tested at once. **Figure 1** shows two LBA plates after the overnight incubation and overlay addition. Color development has taken place and all surviving colonies are visible in red. Bacterial killing is clearly seen for all samples tested in the first three dilutions (rows F-H) and as samples are diluted further up the plate, a decrease in bacterial killing is seen where serum is less concentrated. NICE software interface can be seen in **Figure 2**. Micro-colony counts from the NICE software can be seen in **Figure 3**, and these counts have been organized into **Table 2**. The average CFU count for each dilution of each sample is calculated and a 50% KI value is calculated in **Table 3**. This 50% KI value can be applied to the averaged CFUs for each serum dilution to determine the values needed to calculate the SBA KI according to the formula described in **Figure 4**. The final result of the assay is shown in **Table 4**.

FIGURE AND TABLE LEGENDS:

Table 1: Assay plate layout. Columns 1 and 2 contain the complement control wells. Control A is located in column 1 and is the heat-inactivated complement control, containing SBA buffer, bacteria, and heat-inactivated complement. Control B is located in column 2 and is the active complement control, containing SBA buffer, bacteria, and complement. Columns 3 - 12 contain serum samples. Each sample is run in duplicate and serially diluted 3-fold from row H to row A

Figure 1: LBA plates after color development. Representative *S. flexneri* 3a bacterial micro-colonies have grown overnight to the appropriate size. Overlay agar has been added and colonies have developed a red color by reduction of the TTC compound in overlay agar.

Figure 2: NIST's Integrated Colony Enumerator (NICE) software interface. Graphical representation of the NICE software interface. Regions of Interest (ROIs) are centered over colonies for each spot before counting. Data can be exported directly from the NICE window.

Figure 3: LBA plates counted in NICE Software. The color photograph images are loaded into NICE software and colony forming units (CFUs) are counted automatically. This image shows two representative LBA plates with their colony count information.

Table 2: Counts of bacterial colonies. CFU counts are exported from the NICE software to excel format. These counts can be arranged into a table showing the bacterial counts for all duplicate samples and control wells.

Table 3: Calculation of 50% KI cutoff value and duplicate sample averages. The 50% KI cutoff value was calculated by taking the average of all Control B wells and dividing by 2. Averages of duplicates were calculated for each dilution of each sample that was run in duplicate. NSK value is also calculated.

Figure 4: Schematic of linear interpolation. The number of surviving bacteria (y-axis) at each dilution of serum tested (x-axis) is plotted (black diamonds), and individual points are connected by the thin, dashed black line. The solid and dashed horizontal lines indicate 0% and 50% killing, respectively. The serum dilutions above (Dilution 5) and below (Dilution 4) the 50% killing line are connected by a red line, and bactericidal titer (KI) is indicated.

Table 4. SBA results showing bactericidal titer (KI). Final SBA KI values have been determined for each sample and are shown. These values are calculated using the average CFUs, the 50% KI cutoff value, and the linear interpolation formula.

DISCUSSION:

The protocol described here demonstrates a functional immune assay to assess the shigellacidal activity of antibodies in serum. In the assay demonstrated for this protocol monoclonal antibodies specific for *S. flexneri* 3a were used⁹ along with control human sera from a previous *Shigella* vaccine study¹¹. The source of serum tested in this assay may vary widely from pre-clinical animal samples to human clinical samples, and the shigellacidal activity of the serum

sample will be impacted by immunizations and exposures that the individual has experienced. Some cross-reactivity may be expected between closely related serotypes, specifically *S. flexneri* 2a and *S. flexneri* 3a but little cross-reactivity has been seen in these strains in comparison to *S. sonnei*⁹. The basis of the SBA focuses on the activation of the complement cascade by antibody-antigen binding. Therefore, the handling of the BRC reagent is one of the many critical steps involved in the execution of this protocol. BRC was selected for use in this assay because of its consistent performance and low levels of NSK in other bactericidal assays¹²⁻¹⁴. The activity of BRC is temperature sensitive and appropriate measures must be taken to ensure that freeze thaw cycles are minimized, that the BRC is aliquoted into single use volumes, and that the BRC aliquots are thawed quickly, immediately prior to use in the assay. The consistency of complement activity will impact the reproducibility of this assay. Another critical step that impact assay reproducibility is the production and dilution of bacterial stocks. It is important that before beginning the assay the appropriate dilution of bacterial stocks is determined, as assay success is depending on the consistent production of controls A and B having CFU counts averaging ~120 CFU per spot. In order to get spots that are countable by the software, it is also imperative that the technique used to plate bacteria is executed successfully. The deposition of bacterial solution and tilting of the plate so that spots run ~2-3 cm is critical for producing colonies of the right size and correct distribution for accurate counting by the NICE software. Mastering all of these steps will ensure that accurate, consistent results are produced by this protocol

Even when all critical steps are executed well there may still be instances where it is necessary to modify or troubleshoot this protocol. Modifications of this protocol to evaluate other bacteria may require optimization of the overnight LBA plate incubation temperature, to ensure the formation of micro-colonies. Other strains of bacteria or antibody sources, other than serum, may require optimization of complement concentration. NSK values and KIs of control sera should also be monitored to ensure that the assay is working appropriately. NSK should not rise over 70%. The KI of control sera should not vary more than mean \pm 2SD. To achieve successful and consistent results when using this protocol, it will be necessary to perform all steps as described here with special attention to the critical steps outlined above.

While this protocol fills an important need in the *Shigella* research community, it is not without its limitations. This protocol relies on biological materials and, therefore, will always be some variability that is difficult to control. Variations in complement activity from different lots and sources may contribute to variability in assays. To mitigate this, it is important to handle complement appropriately and test new lots of complement for activity before purchase. It may also be helpful to create pools of complement lots with known activity to have a homogeneous supply. This protocol is simple by design and does not require any specialized equipment and the automated colony enumerating software is freely available. While this simplicity is an advantage, allowing this protocol to be used in virtually any laboratory, it does still require an overnight incubation. Recent assays have been described that have much shorter incubation requirement, but do require specialized, preparatory reagents¹⁵. Another limitation of this assay is that in its current form it is only capable of investigating a single bacterial species at once. In the *Shigella* field there is a desire to create a multivalent vaccine, and having immunological assays that can assess pathogens in a multiplex manner is of great value. This assay could be modified in the

future to meet this need, but in its current form, it is a single-plex assay.

While this assay has some limitations, it still has many advantages over existing or alternative methods. These advantages include many improvements that combine to make the execution of this method much less labor-intensive and more high-throughput than traditional SBAs. The use of frozen bacterial stocks, a 96-well plate assay format, the plating on larger square petri dishes, the coloration of the colonies that allows for photographing and automatic colony-counting, all help to reduce the materials and time needed to complete this assay. This assay also has advantages over other high-throughput methods because it does not require any specialized reagents or equipment. The protocol described can be performed with basic reagents and freely available software, allowing for its application in any laboratory setting.

All of the advantages this protocol provides supports its use in many future investigations. The assay is ideally suited for the examination of immune responses after vaccination or natural infection. This application allows for the SBA to be a valuable tool in *Shigella* vaccine research and has already been used to evaluate vaccine immunogenicity in *Shigella* bio-conjugate vaccines where it has demonstrated the ability of these vaccines to induce the production of functional antibodies¹⁶. This protocol has been extensively tested by multiple laboratories and has been shown to produce reliable, reproducible results⁹. This protocol also produces comparable results when the same samples are tested using other bactericidal assays¹⁷. The consistency in the data generated by this assay, and its compatibility with other older methods makes it a robust tool for accurately assessing bactericidal activity in serum samples. The assay can also easily be adapted to evaluate additional sample types. While serum is readily available in adult clinical trials, it can be difficult to get sufficient serum in trials focusing on infants and small children; one of the eventual target populations for *Shigella* vaccines. In these trials, whole blood is routinely collected on filter paper and dried. There has been some preliminary success with this type of sample format using the SBA. In addition to whole blood, mucosal samples (such as saliva, fecal extracts, and urine) are also a target that is relevant in *Shigella* vaccine research. Currently, this protocol has been evaluated for three of the most clinically relevant serotypes of *Shigella* but it can also be adapted for additional *Shigella* spp. as well as other bacterial pathogens. Future work will focus on the production of a multiplex assay with many of the same characteristics as the assay described by this protocol. A multiplexed assay will allow for evaluation of multiple *Shigella* serotypes simultaneously, further conserving sample volumes and hands on assay time. There is also work underway to transfer this assay to laboratories across the globe. These global evaluations will generate more data towards qualifying the assay on a larger research scale, while at the same time increasing number of microbiology and immunology laboratories that have access to this SBA to evaluate bacteria and serum samples collected from different endemic locations. The assay described here is simple and high-throughput and has the ability to improve immunological assessment in the *Shigella* field, as well as broader applications to assessment of other bacterial pathogens.

ACKNOWLEDGMENTS:

This work was funded by a grant from PATH to M.H.N. This study was conducted as a Cooperative Research and Development Agreement between the Walter Reed Army Institute of Research and

the University of Alabama at Birmingham.

DISCLOSURES:

R.W.K is an employee of the U.S. government and as such the views expressed in this publication are those of the authors and do not necessarily reflect the official policy or position of the Department of the Army, Department of Defense, nor the U.S. Government.

REFERENCES:

- 1 Riddle, M. S., Sanders, J. W., Putnam, S. D. & Tribble, D. R. Incidence, etiology, and impact of diarrhea among long-term travelers (US military and similar populations): a systematic review. *The American Journal of Tropical Medicine and Hygiene*. **74** (5), 891-900, (2006).
- 2 Tickell, K. D. *et al.* Identification and management of Shigella infection in children with diarrhoea: a systematic review and meta-analysis. *The Lancet Global Health*. **5** (12), e1235-e1248, (2017).
- 3 Livio, S. *et al.* Shigella isolates from the global enteric multicenter study inform vaccine development. *Clinical Infectious Diseases*. **59** (7), 933-941, (2014).
- 4 Barry, E. M. *et al.* Progress and pitfalls in Shigella vaccine research. *Nature Reviews Gastroenterology & Hepatology*. **10** (4), 245-255, (2013).
- 5 Noriega, F. R. *et al.* Strategy for cross-protection among Shigella flexneri serotypes. *Infection and Immunity*. **67** (2), 782-788, (1999).
- 6 Levine, M. M., Kotloff, K. L., Barry, E. M., Pasetti, M. F. & Sztein, M. B. Clinical trials of Shigella vaccines: two steps forward and one step back on a long, hard road. *Nature Reviews Microbiology*. **5** (7), 540-553, (2007).
- 7 Sayem, M. A. *et al.* Differential host immune responses to epidemic and endemic strains of Shigella dysenteriae type I. *Journal of Health Population and Nutrition*. **29** (5), 429-437, (2011).
- 8 Rahman, M. J. *et al.* Effects of zinc supplementation as adjunct therapy on the systemic immune responses in shigellosis. *The American Journal of Clinical Nutrition*. **81** (2), 495-502, (2005).
- 9 Nahm, M. H. *et al.* Development, interlaboratory evaluations, and application of a simple, high-throughput Shigella serum bactericidal assay. *mSphere*. **3** (3), (2018).
- 10 Burton, R. L. & Nahm, M. H. Development and validation of a fourfold multiplexed opsonization assay (MOPA4) for pneumococcal antibodies. *Clinical and Vaccine Immunology*. **13** (9), 1004-1009, (2006).
- 11 Tribble, D. *et al.* Safety and immunogenicity of a Shigella flexneri 2a Invaplex 50 intranasal vaccine in adult volunteers. *Vaccine*. **28** (37), 6076-6085, (2010).
- 12 Kim, H. W., Kim, K. H., Kim, J. & Nahm, M. H. A high throughput serum bactericidal assay for antibodies to Haemophilus influenzae type b. *BMC Infectious Diseases*. **16** 473, (2016).
- 13 Maslanka, S. E. *et al.* Standardization and a multilaboratory comparison of Neisseria meningitidis serogroup A and C serum bactericidal assays. The Multilaboratory Study Group. *Clinical Diagnostic Laboratory Immunology*. **4** (2), 156-167, (1997).
- 14 Jang, M. S., Sahastrabudhe, S., Yun, C. H., Han, S. H. & Yang, J. S. Serum bactericidal assay for the evaluation of typhoid vaccine using a semi-automated colony-counting method.

568 *Microbial Pathogenesis*. **97** 19-26, (2016).
569 15 Necchi, F., Saul, A. & Rondini, S. Development of a high-throughput method to evaluate
570 serum bactericidal activity using bacterial ATP measurement as survival readout. *PLoS*
571 *One*. **12** (2), e0172163, (2017).
572 16 Riddle, M. S. *et al.* Safety and immunogenicity of a candidate bioconjugate vaccine against
573 *Shigella flexneri* 2a administered to healthy adults: a single blind, randomized phase I
574 study. *Clinical and Vaccine Immunology*. 10.1128/CVI.00224-16, (2016).
575 17 Shimanovich, A. A. *et al.* Functional and Antigen-Specific Serum Antibody Levels as
576 Correlates of Protection against Shigellosis in a Controlled Human Challenge Study.
577 *Clinical and Vaccine Immunology*. **24** (2), (2017).
578
579

Figure 1

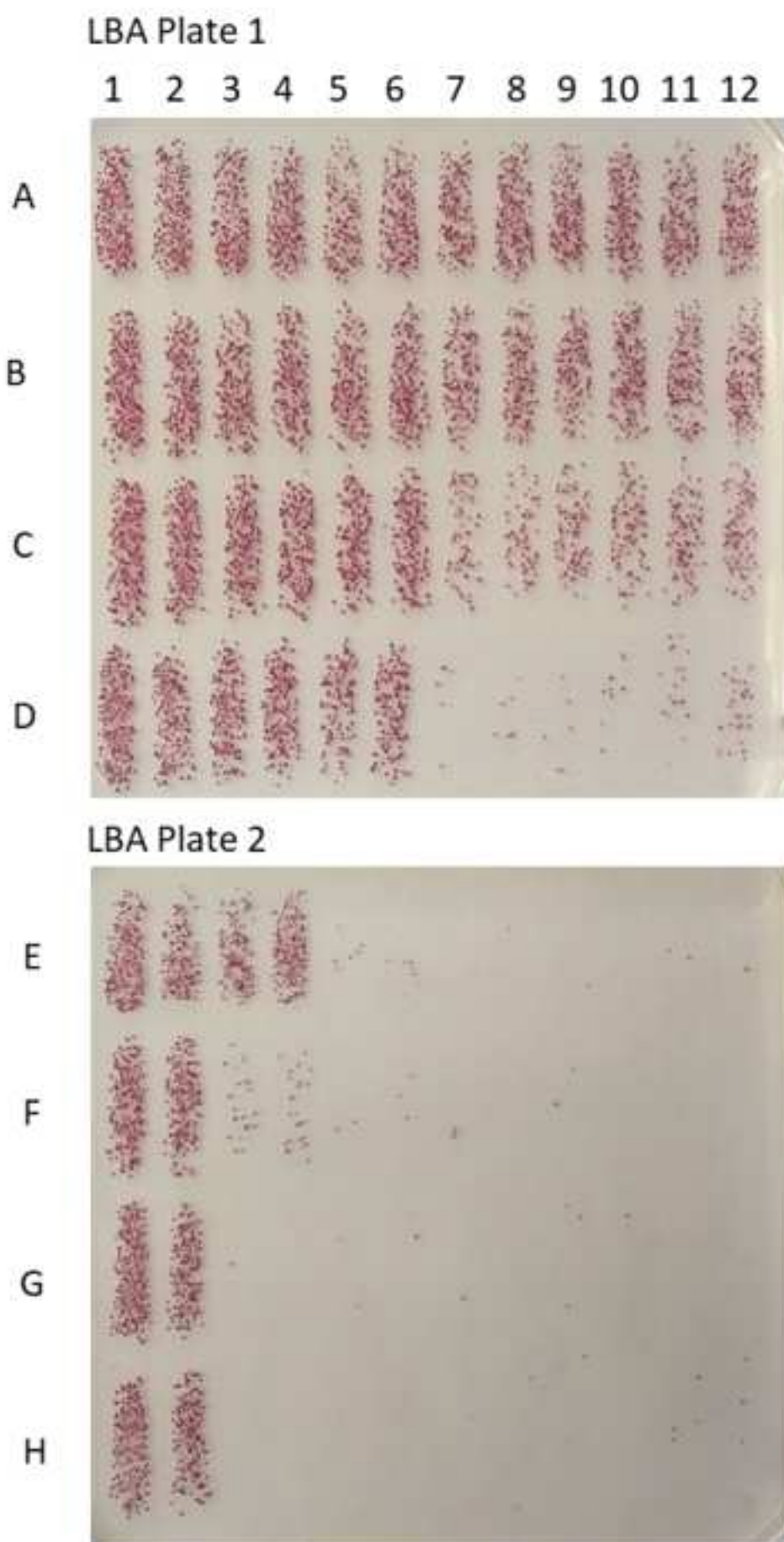


Figure 3

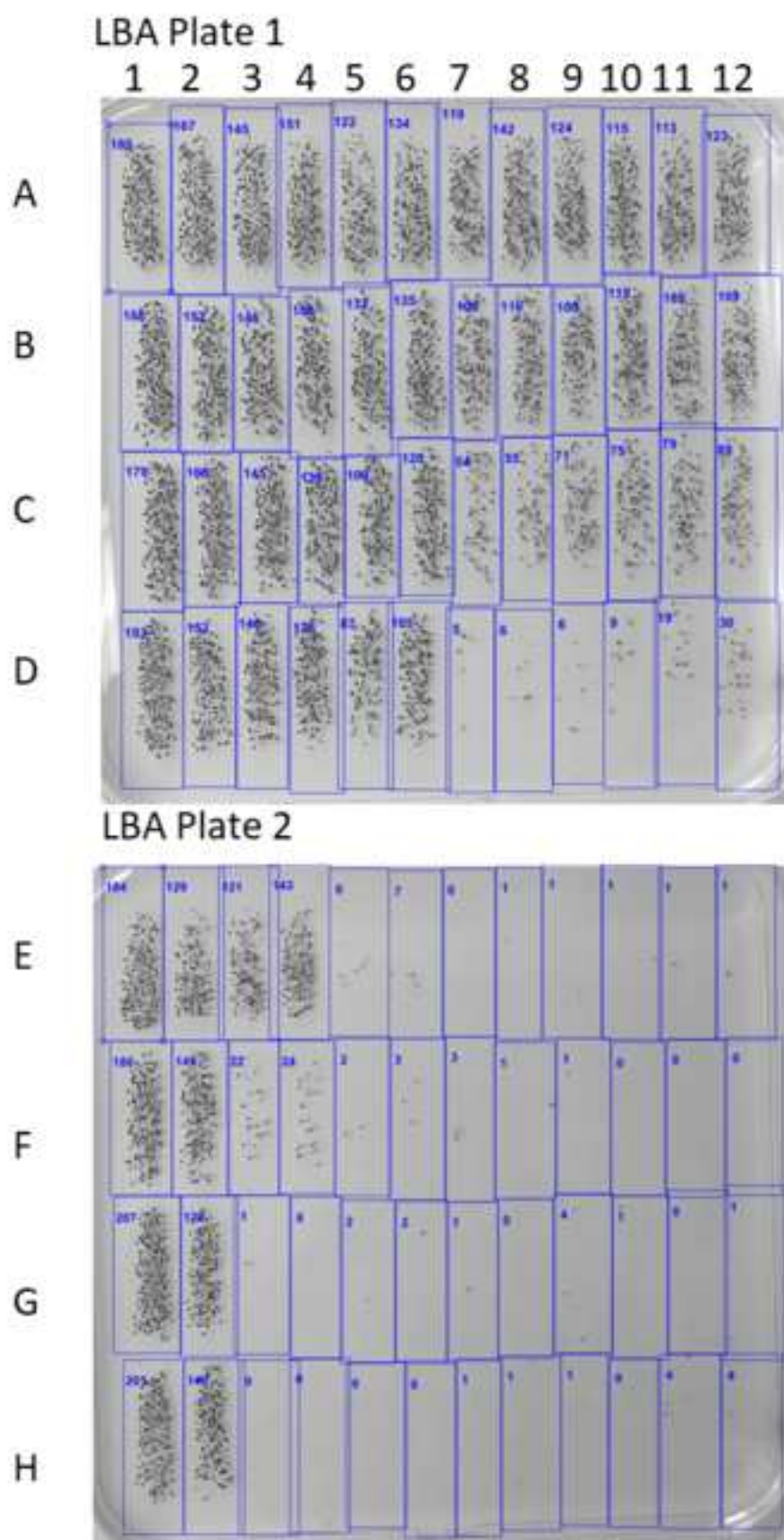


Figure 4

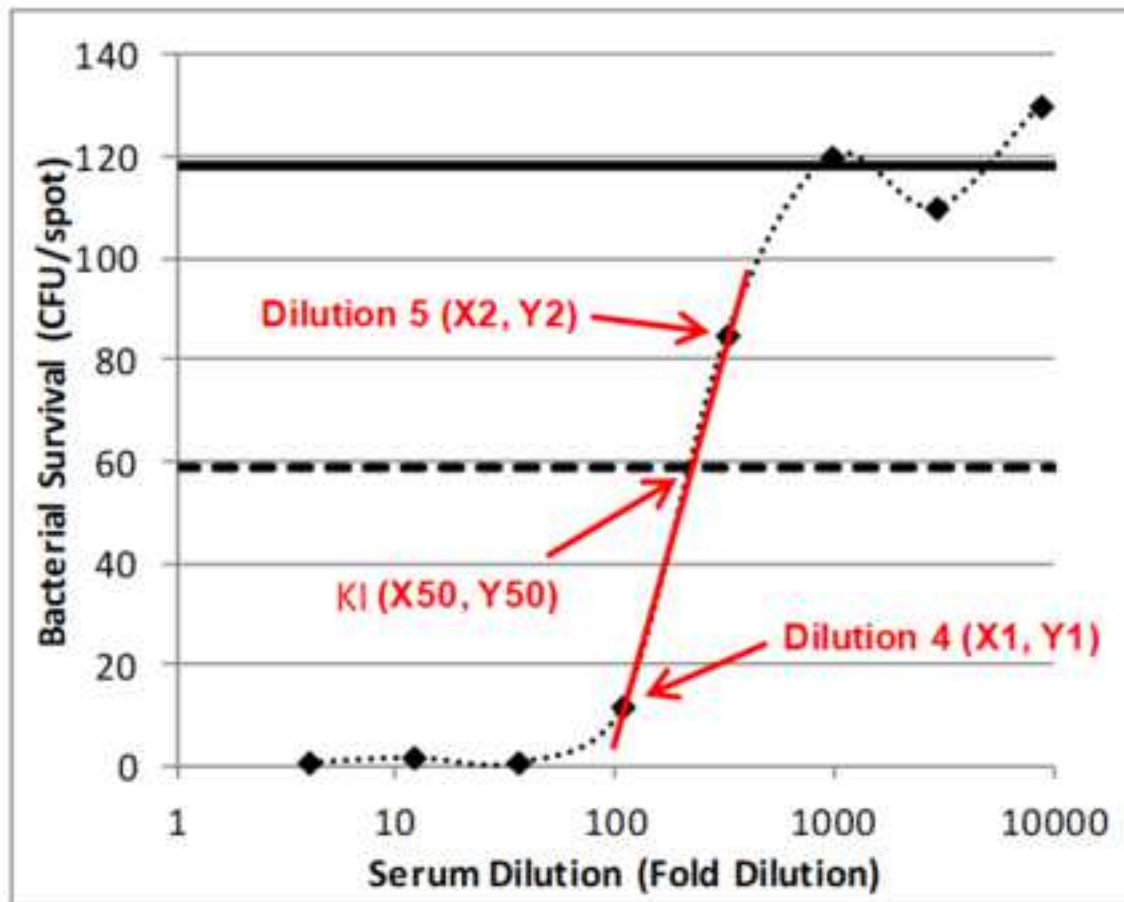


Table 1

	1	2	3	4	5	6	7	8	9	10	11	12
A	Control A	Control B	Dilution 8	Dilution 8	Dilution 8	Dilution 8	Dilution 8	Dilution 8	Dilution 8	Dilution 8	Dilution 8	Dilution 8
B	Control A	Control B	Dilution 7	Dilution 7	Dilution 7	Dilution 7	Dilution 7	Dilution 7	Dilution 7	Dilution 7	Dilution 7	Dilution 7
C	Control A	Control B	Dilution 6	Dilution 6	Dilution 6	Dilution 6	Dilution 6	Dilution 6	Dilution 6	Dilution 6	Dilution 6	Dilution 6
D	Control A	Control B	Dilution 5	Dilution 5	Dilution 5	Dilution 5	Dilution 5	Dilution 5	Dilution 5	Dilution 5	Dilution 5	Dilution 5
E	Control A	Control B	Dilution 4	Dilution 4	Dilution 4	Dilution 4	Dilution 4	Dilution 4	Dilution 4	Dilution 4	Dilution 4	Dilution 4
F	Control A	Control B	Dilution 3	Dilution 3	Dilution 3	Dilution 3	Dilution 3	Dilution 3	Dilution 3	Dilution 3	Dilution 3	Dilution 3
G	Control A	Control B	Dilution 2	Dilution 2	Dilution 2	Dilution 2	Dilution 2	Dilution 2	Dilution 2	Dilution 2	Dilution 2	Dilution 2
H	Control A	Control B	Dilution 1	Dilution 1	Dilution 1	Dilution 1	Dilution 1	Dilution 1	Dilution 1	Dilution 1	Dilution 1	Dilution 1
			Sample 1		Sample 2		Sample 3		Sample 4		Sample 5	

Table 2

185	167	145	151	122	134	119	142	124
186	152	145	138	132	135	108	116	100
179	160	145	135	109	120	54	55	71
193	153	146	138	87	105	5	6	6
184	129	121	143	6	7	0	1	1
180	145	22	24	2	3	3	1	1
207	129	1	0	2	2	1	0	4
201	140	0	0	0	0	1	1	1
Control A	Control B	Sample 1		Sample 2		Sample 3		Sampl

115	113	123	1:17496	Dilution 8
119	105	109	1:5832	Dilution 7
75	79	89	1:1944	Dilution 6
9	19	30	1:648	Dilution 5
1	1	1	1:216	Dilution 4
0	0	0	1:72	Dilution 3
1	0	1	1:24	Dilution 2
0	4	4	1:8	Dilution 1
Sample 4	Sample 5			

Table 3

Control A 189	Control B 147	148	128	131	120	118	1:17496	Dilution 8
		142	134	112	110	107	1:5832	Dilution 7
NSK (1-CtrB/CtrA): 22%		140	115	55	73	84	1:1944	Dilution 6
50% KI (CtrB/2): 73		142	96	6	8	25	1:648	Dilution 5
		132	7	1	1	1	1:216	Dilution 4
		23	3	2	1	0	1:72	Dilution 3
		1	2	1	3	1	1:24	Dilution 2
		0	0	1	1	4	1:8	Dilution 1
		Sample 1	Sample 2	Sample 3	Sample 4	Sample 5		

Table 4

	SBA KI
Sample 1	72
Sample 2	216
Sample 3	1994
Sample 4	1994
Sample 5	648

Name of Materials and Disposables	Company	Catalog Number	Comments/Description
Gelatin	Sigma	G9391	Type B, powder, BioReagent, suitable for cell culture
TTC (2,3,5-Triphenyltetrazolium chloride)	Sigma	T8877	≥98.0% (HPLC)
Sodium azide (NaN ₃)	Sigma	S2002	≥99.5%
Baby Rabbit Complement	PeFreez	31061-3	3-4 week old
HBSS with Ca ²⁺ /Mg ²⁺	Invitrogen	14065-56	Without Phenol Red
LB Agar (Lennox)	Sigma	L2897	Powder microbial growth medium
Bacto Agar	BD	214010	Powdered, (C ₁₂ H ₁₈ O ₉) _n
Glycerol	Sigma	G5516	For molecular biology, ≥99%
LB Broth (Lennox)	Sigma	L3022	Powder microbial growth medium
Square Petri Dish	Sigma	Z617679-240EA	120 mm x 120 mm
Assay Plate	Costar	3799	96 well u-bottom plate with lid
NICE Software	University of Alabama at Birmingham		ftp://ftp.nist.gov/pub/physics/mlclarke/NICE/



1 Alewife Center #200
Cambridge, MA 02140
tel. 617.945.9051
www.jove.com

ARTICLE AND VIDEO LICENSE AGREEMENT

Title of Article:

A simple, High-Throughput Shigella Serum Bactericidal Assay

Author(s):

Hailey P. Weerts, Jigui Yu, Robert W. Kaminski, Moon H. Nahm

Item 1 (check one box): The Author elects to have the Materials be made available (as described at

<http://www.jove.com/author>) via: ☐ Standard Access ☒ Open Access

Item 2 (check one box):

- ☐ The Author is NOT a United States government employee.
- ☒ The Author is a United States government employee and the Materials were prepared in the course of his or her duties as a United States government employee.
- ☐ The Author is a United States government employee but the Materials were NOT prepared in the course of his or her duties as a United States government employee.

ARTICLE AND VIDEO LICENSE AGREEMENT

1. **Defined Terms.** As used in this Article and Video License Agreement, the following terms shall have the following meanings: “**Agreement**” means this Article and Video License Agreement; “**Article**” means the article specified on the last page of this Agreement, including any associated materials such as texts, figures, tables, artwork, abstracts, or summaries contained therein; “**Author**” means the author who is a signatory to this Agreement; “**Collective Work**” means a work, such as a periodical issue, anthology or encyclopedia, in which the Materials in their entirety in unmodified form, along with a number of other contributions, constituting separate and independent works in themselves, are assembled into a collective whole; “**CRC License**” means the Creative Commons Attribution-Non Commercial-No Derivs 3.0 Unported Agreement, the terms and conditions of which can be found at: <http://creativecommons.org/licenses/by-nc-nd/3.0/legalcode>; “**Derivative Work**” means a work based upon the Materials or upon the Materials and other pre-existing works, such as a translation, musical arrangement, dramatization, fictionalization, motion picture version, sound recording, art reproduction, abridgment, condensation, or any other form in which the Materials may be recast, transformed, or adapted; “**Institution**” means the institution, listed on the last page of this Agreement, by which the Author was employed at the time of the creation of the Materials; “**JoVE**” means MyJoVE Corporation, a Massachusetts corporation and the publisher of *The Journal of Visualized Experiments*; “**Materials**” means the Article and / or the Video; “**Parties**” means the Author and JoVE; “**Video**” means any video(s) made by the Author, alone or in conjunction with any other parties, or by JoVE or its affiliates or agents, individually or in collaboration with the Author or any other parties, incorporating all or any portion of the Article, and in which the Author may or may not appear.

2. **Background.** The Author, who is the author of the Article, in order to ensure the dissemination and protection of the Article, desires to have the JoVE publish the Article and create and transmit videos based on the Article. In furtherance of such goals, the Parties desire to memorialize in this Agreement the respective rights of each Party in and to the Article and the Video.

3. **Grant of Rights in Article.** In consideration of JoVE agreeing to publish the Article, the Author hereby grants to JoVE, subject to **Sections 4 and 7** below, the exclusive, royalty-free, perpetual (for the full term of copyright in the Article, including any extensions thereto) license (a) to publish, reproduce, distribute, display and store the Article in all forms, formats and media whether now known or hereafter developed (including without limitation in print, digital and electronic form) throughout the world, (b) to translate the Article into other languages, create adaptations, summaries or extracts of the Article or other Derivative Works (including, without limitation, the Video) or Collective Works based on all or any portion of the Article and exercise all of the rights set forth in (a) above in such translations, adaptations, summaries, extracts, Derivative Works or Collective Works and (c) to license others to do any or all of the above. The foregoing rights may be exercised in all media and formats, whether now known or hereafter devised, and include the right to make such modifications as are technically necessary to exercise the rights in other media and formats. If the “Open Access” box has been checked in **Item 1** above, JoVE and the Author hereby grant to the public all such rights in the Article as provided in, but subject to all limitations and requirements set forth in, the CRC License.

ARTICLE AND VIDEO LICENSE AGREEMENT

4. **Retention of Rights in Article.** Notwithstanding the exclusive license granted to JoVE in **Section 3** above, the Author shall, with respect to the Article, retain the non-exclusive right to use all or part of the Article for the non-commercial purpose of giving lectures, presentations or teaching classes, and to post a copy of the Article on the Institution's website or the Author's personal website, in each case provided that a link to the Article on the JoVE website is provided and notice of JoVE's copyright in the Article is included. All non-copyright intellectual property rights in and to the Article, such as patent rights, shall remain with the Author.

5. **Grant of Rights in Video – Standard Access.** This **Section 5** applies if the "Standard Access" box has been checked in **Item 1** above or if no box has been checked in **Item 1** above. In consideration of JoVE agreeing to produce, display or otherwise assist with the Video, the Author hereby acknowledges and agrees that, Subject to **Section 7** below, JoVE is and shall be the sole and exclusive owner of all rights of any nature, including, without limitation, all copyrights, in and to the Video. To the extent that, by law, the Author is deemed, now or at any time in the future, to have any rights of any nature in or to the Video, the Author hereby disclaims all such rights and transfers all such rights to JoVE.

6. **Grant of Rights in Video – Open Access.** This **Section 6** applies only if the "Open Access" box has been checked in **Item 1** above. In consideration of JoVE agreeing to produce, display or otherwise assist with the Video, the Author hereby grants to JoVE, subject to **Section 7** below, the exclusive, royalty-free, perpetual (for the full term of copyright in the Article, including any extensions thereto) license (a) to publish, reproduce, distribute, display and store the Video in all forms, formats and media whether now known or hereafter developed (including without limitation in print, digital and electronic form) throughout the world, (b) to translate the Video into other languages, create adaptations, summaries or extracts of the Video or other Derivative Works or Collective Works based on all or any portion of the Video and exercise all of the rights set forth in (a) above in such translations, adaptations, summaries, extracts, Derivative Works or Collective Works and (c) to license others to do any or all of the above. The foregoing rights may be exercised in all media and formats, whether now known or hereafter devised, and include the right to make such modifications as are technically necessary to exercise the rights in other media and formats. For any Video to which this **Section 6** is applicable, JoVE and the Author hereby grant to the public all such rights in the Video as provided in, but subject to all limitations and requirements set forth in, the CRC License.

7. **Government Employees.** If the Author is a United States government employee and the Article was prepared in the course of his or her duties as a United States government employee, as indicated in **Item 2** above, and any of the licenses or grants granted by the Author hereunder exceed the scope of the 17 U.S.C. 403, then the rights granted hereunder shall be limited to the maximum rights permitted under such

statute. In such case, all provisions contained herein that are not in conflict with such statute shall remain in full force and effect, and all provisions contained herein that do so conflict shall be deemed to be amended so as to provide to JoVE the maximum rights permissible within such statute.

8. **Likeness, Privacy, Personality.** The Author hereby grants JoVE the right to use the Author's name, voice, likeness, picture, photograph, image, biography and performance in any way, commercial or otherwise, in connection with the Materials and the sale, promotion and distribution thereof. The Author hereby waives any and all rights he or she may have, relating to his or her appearance in the Video or otherwise relating to the Materials, under all applicable privacy, likeness, personality or similar laws.

9. **Author Warranties.** The Author represents and warrants that the Article is original, that it has not been published, that the copyright interest is owned by the Author (or, if more than one author is listed at the beginning of this Agreement, by such authors collectively) and has not been assigned, licensed, or otherwise transferred to any other party. The Author represents and warrants that the author(s) listed at the top of this Agreement are the only authors of the Materials. If more than one author is listed at the top of this Agreement and if any such author has not entered into a separate Article and Video License Agreement with JoVE relating to the Materials, the Author represents and warrants that the Author has been authorized by each of the other such authors to execute this Agreement on his or her behalf and to bind him or her with respect to the terms of this Agreement as if each of them had been a party hereto as an Author. The Author warrants that the use, reproduction, distribution, public or private performance or display, and/or modification of all or any portion of the Materials does not and will not violate, infringe and/or misappropriate the patent, trademark, intellectual property or other rights of any third party. The Author represents and warrants that it has and will continue to comply with all government, institutional and other regulations, including, without limitation all institutional, laboratory, hospital, ethical, human and animal treatment, privacy, and all other rules, regulations, laws, procedures or guidelines, applicable to the Materials, and that all research involving human and animal subjects has been approved by the Author's relevant institutional review board.

10. **JoVE Discretion.** If the Author requests the assistance of JoVE in producing the Video in the Author's facility, the Author shall ensure that the presence of JoVE employees, agents or independent contractors is in accordance with the relevant regulations of the Author's institution. If more than one author is listed at the beginning of this Agreement, JoVE may, in its sole discretion, elect not take any action with respect to the Article until such time as it has received complete, executed Article and Video License Agreements from each such author. JoVE reserves the right, in its absolute and sole discretion and without giving any reason therefore, to accept or decline any work submitted to JoVE. JoVE and its employees, agents and independent contractors shall have

ARTICLE AND VIDEO LICENSE AGREEMENT

full, unfettered access to the facilities of the Author or of the Author's institution as necessary to make the Video, whether actually published or not. JoVE has sole discretion as to the method of making and publishing the Materials, including, without limitation, to all decisions regarding editing, lighting, filming, timing of publication, if any, length, quality, content and the like.

11. Indemnification. The Author agrees to indemnify JoVE and/or its successors and assigns from and against any and all claims, costs, and expenses, including attorney's fees, arising out of any breach of any warranty or other representations contained herein. The Author further agrees to indemnify and hold harmless JoVE from and against any and all claims, costs, and expenses, including attorney's fees, resulting from the breach by the Author of any representation or warranty contained herein or from allegations or instances of violation of intellectual property rights, damage to the Author's or the Author's institution's facilities, fraud, libel, defamation, research, equipment, experiments, property damage, personal injury, violations of institutional, laboratory, hospital, ethical, human and animal treatment, privacy or other rules, regulations, laws, procedures or guidelines, liabilities and other losses or damages related in any way to the submission of work to JoVE, making of videos by JoVE, or publication in JoVE or elsewhere by JoVE. The Author shall be responsible for, and shall hold JoVE harmless from, damages caused by lack of sterilization, lack of cleanliness or by contamination due to the making of a video by JoVE its employees, agents or independent contractors. All sterilization, cleanliness or decontamination procedures shall be solely the responsibility of the Author and shall be undertaken at the Author's

expense. All indemnifications provided herein shall include JoVE's attorney's fees and costs related to said losses or damages. Such indemnification and holding harmless shall include such losses or damages incurred by, or in connection with, acts or omissions of JoVE, its employees, agents or independent contractors.

12. Fees. To cover the cost incurred for publication, JoVE must receive payment before production and publication the Materials. Payment is due in 21 days of invoice. Should the Materials not be published due to an editorial or production decision, these funds will be returned to the Author. Withdrawal by the Author of any submitted Materials after final peer review approval will result in a US\$1,200 fee to cover pre-production expenses incurred by JoVE. If payment is not received by the completion of filming, production and publication of the Materials will be suspended until payment is received.

13. Transfer, Governing Law. This Agreement may be assigned by JoVE and shall inure to the benefits of any of JoVE's successors and assignees. This Agreement shall be governed and construed by the internal laws of the Commonwealth of Massachusetts without giving effect to any conflict of law provision thereunder. This Agreement may be executed in counterparts, each of which shall be deemed an original, but all of which together shall be deemed to be one and the same agreement. A signed copy of this Agreement delivered by facsimile, e-mail or other means of electronic transmission shall be deemed to have the same legal effect as delivery of an original signed copy of this Agreement.

A signed copy of this document must be sent with all new submissions. Only one Agreement required per submission.

CORRESPONDING AUTHOR:

Name:

Robert W. Kaminski

Department:

Department of Enteric Infections

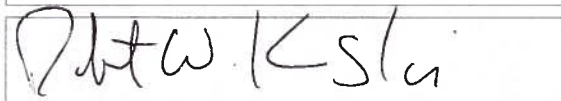
Institution:

Walter Reed Army Institute of Research

Article Title:

A simple, High-Throughput Shigella Serum Bactericidal Assay

Signature:



Date:

5/12/18

Please submit a signed and dated copy of this license by one of the following three methods:

- 1) Upload a scanned copy of the document as a pdf on the JoVE submission site;
- 2) Fax the document to +1.866.381.2236;
- 3) Mail the document to JoVE / Attn: JoVE Editorial / 1 Alewife Center #200 / Cambridge, MA 02139

For questions, please email submissions@jove.com or call +1.617.945.9051

Editorial comments:

Changes to be made by the Author(s):

Changes to be made by the Author(s):

1. Please take this opportunity to thoroughly proofread the manuscript to ensure that there are no spelling or grammar issues. The JoVE editor will not copy-edit your manuscript and any errors in the submitted revision may be present in the published version.

Manuscript has been reviewed.

2. Please rephrase the Short Abstract/Summary to clearly describe the protocol and its applications in complete sentences between 10-50 words: "Here, we present a protocol to ..."

Short Abstract/Summary has been rephrased.

3. Please include an ethics statement before the numbered protocol steps, indicating that the protocol follows the guidelines of your institution's human research ethics committee.

An ethics statement has been added.

4. JoVWE cannot publish manuscripts containing commercial language. This includes trademark symbols (™), registered symbols (®), and company names before an instrument or reagent. Please remove all commercial language from your manuscript and use generic terms instead. All commercial products should be sufficiently referenced in the Table of Materials and Reagents.

For example: NICE software

Commercial language was removed and NICE software (which is freely available) was added to the Table of Materials and Reagents.

5. Please ensure that all text in the protocol section is written in the imperative tense as if telling someone how to do the technique (e.g., "Do this," "Ensure that," etc.). The actions should be described in the imperative tense in complete sentences wherever possible. Avoid usage of phrases such as "could be," "should be," and "would be" throughout the Protocol. Any text that cannot be written in the imperative tense may be added as a "Note." However, notes should be concise and used sparingly. Please include all safety procedures and use of hoods, etc.

Protocol has been edited to use imperative tense.

6. The Protocol should be made up almost entirely of discrete steps without large paragraphs of text between sections. Please simplify the Protocol so that individual steps contain only 2-3 actions per step and a maximum of 4 sentences per step.

Protocol steps have been modified.

7. The Protocol should contain only action items that direct the reader to do something.

Protocol steps have been modified.

8. Please convert centrifuge speeds to centrifugal force (x g) instead of revolutions per minute (rpm).

Speeds were converted.

9. Please add more details to your protocol steps. Please ensure you answer the “how” question, i.e., how is the step performed? Alternatively, add references to published material specifying how to perform the protocol action.

Details were added.

10. 3.23: Please provide graphical user interface, button clicks etc to show how do you count the surviving colonies.

Instructions were added to this section of the protocol to describe colony counting using NICE software. A figure was added to show the software interface.

11. Please remove the redundancy in the protocol but not repeating the steps described before. E.g. solution preparation steps e.g. overlay agar, etc. Please write exactly how you perform your experiment with all specific details

Redundancy in solution preparation was removed and details were added.

12. Please ensure that the highlighted steps form a cohesive narrative with a logical flow from one highlighted step to the next. Please ensure that the highlighted steps is no more than 2.75 pages including heading and spacings.

Highlighted protocol steps are less than 2.75 pages and flow was adjusted.

13. Please obtain explicit copyright permission to reuse any figures from a previous publication. Explicit permission can be expressed in the form of a letter from the editor or a link to the editorial policy that allows re-prints. Please upload this information as a .doc or .docx file to your Editorial Manager account. The Figure must be cited appropriately in the Figure Legend, i.e. “This figure has been modified from [citation].”

No figures are being reproduced from previous publication and permission should not be needed.

14. All figures and/or tables showing data must include measurement definitions, scale bars, and error bars (if applicable), abbreviations etc.

Figures and legends have been modified to include definition of abbreviations.

15. Please do not abbreviate journal title in the reference section.

References were edited to include full journal titles.

16. Unfortunately, there are a few sections of the manuscript that show significant overlap with previously published work. Though there may be a limited number of ways to describe a technique, please use original language throughout the manuscript. Please see lines: title of the manuscript, 37-38, 77-78, 119-120, 175-180, 226-227.

The indicated sections were modified.

Reviewers' comments:

Reviewer #1:

Manuscript Summary:

The manuscript "A simple, high-throughput Shigella serum bactericidal assay" by Weerts et al. presents useful serum bactericidal assay to determine functionality of antibody against Shigella spp. in the serum. They developed and optimized the assay using simple colony-counting method. It is interesting assay protocol because serum bactericidal assay against Shigella spp. is not published.

Major Concerns:

1. This assay measures the functional activity of serum against Shigella spp. Therefore, the information of serum used in this study should be provided.

Samples used in this assay include monoclonal antibodies, specific for *S. flexneri* 3a, described in a previous publication (Lin et al., 2016) and human serum samples from Control volunteers in a previous shigella vaccine study (Tribble et al., 2010). These serum were selected specifically for demonstration purposes as representative samples with activity against the strain being displayed. A reference to the origins of the sera shown in the assay was added to the discussion.

Lin, J., Smith, M. A., Benjamin, W. H., Jr., Kaminski, R. W., Wenzel, H., & Nahm, M. H. (2016). Monoclonal Antibodies to Shigella Lipopolysaccharide Are Useful for Vaccine Production. *Clinical Vaccine Immunology*, 23(8), 681-688. doi:10.1128/CVI.00148-16

Tribble, D., Kaminski, R., Cantrell, J., Nelson, M., Porter, C., Baqar, S., . . . Oaks, E. (2010). Safety and immunogenicity of a Shigella flexneri 2a Invaplex 50 intranasal vaccine in adult volunteers. *Vaccine*, 28(37), 6076-6085. doi:10.1016/j.vaccine.2010.06.086

2. Figure 1 only showed the serum bactericidal activity (SBA) against *S. flexneri* 2a. In the protocol, the assays for *S. flexneri* 3a and *S. sonnei* were also described. Authors need to provide the SBA data for two species. Furthermore, it needs to be clarified whether one species-specific serum show cross-reactivity against other Shigella spp.

The figure shown is actually a representation of a *S. flexneri* 3a assay and the text has been modified to reflect this. This scope of this manuscript is to describe in detail how this shigellacidal assay is performed. A previous publication has specific information on development of the assay to accommodate additional serotypes of *Shigella* (*S. flexneri* 2a, *S. flexneri* 3a and *S. sonnei*). With minor modifications, that are described in the protocol section, this single protocol can be used with all three serotypes.

Cross-reactivity of the serum used is entirely dependent on the source of the serum and the exposure history of the animal/individual from which it is collected. This assay has been used in pre-clinical and clinical work and some level of cross reactivity has been seen between *S. flexneri* 2a and *S. flexneri* 3a, potentially because of their closely related LPS structures. Much less cross-reactivity is seen to *S. sonnei*, even though all strains share highly conserved protein structures. This information and a reference have been added to the discussion section.

3. As authors described in the 3rd paragraph of Discussion section, sources and lot-variation of complements are critical for SBA. Authors should provide the data why baby rabbit complements was selected for SBA against Shigella spp. but not complements derived from other animal (e.g, guinea pig, adult rabbit, human, etc). In addition, the SBA needs to be tested with a few different batches of complement to see the lot-variations.

Baby rabbit complement has been widely used in many different functional assays for many different pathogens, notably *Haemophilus influenza* (Kim, Kim, Kim, & Nahm, 2016), *Neisseria meningitidis* (Maslanka et al., 1997), *Salmonella thypi* (Jang, Sahastrabuddhe, Yun, Han, & Yang, 2016). BRC is often selected for functional assays because it is widely available, can be purchased in large lot volumes and has reliable activity with low non-specific killing. The process for selecting appropriate lots of complements is detailed in a freely available protocol for the MOPA assay. A link to this assay has been added to the manuscript. (<https://www.vaccine.uab.edu/uploads/mdocs/UAB-MOPA.pdf>)

Kim, H. W., Kim, K. H., Kim, J., & Nahm, M. H. (2016). A high throughput serum bactericidal assay for antibodies to *Haemophilus influenzae* type b. *BMC Infectious Disease*, 16, 473. doi:10.1186/s12879-016-1808-4

Jang, M. S., Sahastrabuddhe, S., Yun, C. H., Han, S. H., & Yang, J. S. (2016). Serum bactericidal assay for the evaluation of typhoid vaccine using a semi-automated colony-counting method. *Microbial Pathogenesis*, 97, 19-26. doi:10.1016/j.micpath.2016.05.013

Maslanka, S. E., Gheesling, L. L., Libutti, D. E., Donaldson, K. B., Harakeh, H. S., Dykes, J. K., . . . Carlone, G. M. (1997). Standardization and a multilaboratory comparison of *Neisseria meningitidis* serogroup A and C serum bactericidal assays. The Multilaboratory Study Group. *Clinical Diagnostic Lab Immunology*, 4(2), 156-167.

4. The specificity of the assay needs to be provided using irrelevant enteric bacteria.

The specificity of the assay is highly dependent on the source of the serum and the exposure history of the animal/individual that it has come from, and certainly in individuals in endemic regions we would expect to see reactivity of their serum with other enteric bacteria. In these cases it would be important to use this assay to look at fold increase of bactericidal titers before and after immunization/challenge. When using well defined monoclonal antibodies or pathogen free animals we would not expect any cross-reactivity with other enteric bacterial. A recent publication has used monoclonal antibodies specific for *Shigella* in assays targeting *E. coli* (Lin et al., 2016). This study shows that the antibodies against *S. flexneri* LPS do not bind to *E. coli*. The complement controls that are present in this assay also take into account non-specific killing (NSK) related to the activity of complement alone, and this NSK should be routinely monitored as part of the assay to ensure specificity.

Lin, J., Smith, M. A., Benjamin, W. H., Jr., Kaminski, R. W., Wenzel, H., & Nahm, M. H. (2016). Monoclonal Antibodies to *Shigella* Lipopolysaccharide Are Useful for Vaccine Production. *Clinical Vaccine Immunology*, 23(8), 681-688. doi:10.1128/CVI.00148-16

5. Advantages and limitations should be described with previous literatures in the Discussion section.

Previous literature citations were added to the advantages and limitations sections of the manuscript. This now includes comparisons to other bactericidal assays using different formats, and references to manuscripts showing the use of the assay in additional laboratories and with clinical samples.

Minor Concerns:

1. Reference should be provided for the sentence from line 318 to 325.

A reference was added to justify the incubation temperatures used.

2. In this protocol (line 318 - 325), top agar was overlaid on the LBA plate after overnight incubation. However, in other SBA protocols, top agar was overlaid immediately after adsorption of serum-bacteria mixture on the LBA plate. Please provide the reason for this specific procedure.

During development of this specific assay it was found that adding overlay directly after spotting caused *Shigella* to float to the surface of the agar and caused messy spots and faintly colored colonies. While this is not seen for other bacterial strains, such as *Streptococcus pneumoniae*, much more neat and consistent results were seen if the agar was added after an overnight incubation.

Reviewer #2:

Manuscript Summary:

This described a detailed experimental protocol and related information on the newly established serum bactericidal assay (SBA) for shigella vaccine study.

Major Concerns:

1. Baby rabbit complements (BRCs) may have lot-to-lot variation in terms of complement components, their activities, and other serum components including natural antibodies, albumin, lipids, and lipoproteins, all of which might potentially influence on the SBA. Thus, a protocol section would better be added on how to select qualified BRCs and what criteria should be tested in new lot number BRC.

The process for selecting appropriate lots of complements is detailed in a freely available protocol for the MOPA assay. A link to this assay has been added to the manuscript.
(<https://www.vaccine.uab.edu/uploads/mdocs/UAB-MOPA.pdf>)

2. The authors provided reagents and disposables in the Table of materials. Considering that potential users of the protocol are not only American scientists but also scientists in other countries, some scientists may not be able to purchase the same ones listed on the Table of materials. Thus, it would be better to provide equivalent reagents and disposables that are alternatively-usable.

More detailed information has been added to the Table of Materials and Disposables. Many of the reagents used in this protocol are simple microbiological products and should be able to be obtained in many countries. The additional information included in the Table of Materials should enable laboratories across the globe to purchase similar/equivalent products.

3. Vibriocidal antibody assay (i.e., SBA for *Vibrio cholerae*) uses guinea pig complements rather than BRCs. Have compare complements from different species? What is the scientific reason (or evidence) for the use of BRCs in the shigella SBA? Please add a paragraph on this issue.

Two of the authors, Nahm and Yu, have been working with functional assays using different complement sources for many years and have found baby rabbit complement to be effective, widely available, can be purchased in large lot volumes and has reliable actively with low non-specific killing. BRC has been widely used in many different functional assays for many different pathogens, notably *Haemophilus influenza* (Kim et al., 2016), *Neisseria meningitidis* (Maslanka et al., 1997), *Salmonella thypi* (Jang et al., 2016). These citations and explanation have been added to the discussion section.

Kim, H. W., Kim, K. H., Kim, J., & Nahm, M. H. (2016). A high throughput serum bactericidal assay for antibodies to *Haemophilus influenzae* type b. *BMC Infectious Disease*, 16, 473. doi:10.1186/s12879-016-1808-4

Jang, M. S., Sahastrabuddhe, S., Yun, C. H., Han, S. H., & Yang, J. S. (2016). Serum bactericidal assay for the evaluation of typhoid vaccine using a semi-automated colony-counting method. *Microbial Pathogenesis*, 97, 19-26. doi:10.1016/j.micpath.2016.05.013

Maslanka, S. E., Gheesling, L. L., Libutti, D. E., Donaldson, K. B., Harakeh, H. S., Dykes, J. K., . . . Carlone, G. M. (1997). Standardization and a multilaboratory comparison of *Neisseria meningitidis* serogroup A and C serum bactericidal assays. The Multilaboratory Study Group. *Clinical Diagnostic Lab Immunology*, 4(2), 156-167.

4. Please provide detailed information the machinery including Company/Manufacturer, catalog number, and alternatives.

More detailed information has been added to the Table of Materials and Disposables.

5. (line 136) "12 mm X 12 mm" might be "12 cm X 12 cm"

This has been corrected to "120 mm x 120 mm".

Minor Concerns:

Typographic or editing errors that should be corrected are as follows:

(line 38) "serum bactericidal assay" should be SBA because it was already shortened above.

(line 41) "highthroughput" should be "high-throughput"

(lines 80, 169, 267, 365, 381, and 382) "heat inactivated" should be "heat-inactivated". In fact, both "heat-inactivated" and "heat inactivated" exist in the manuscript.

(lines 83) "colony forming" should be "colony-forming"

(line 85) Add hyphen at "labor intensive" and "time consuming"

(lines 97) "colony counting" should be "colony-counting"

(line 136) "1L" should be "1 L"

(line 147) Please provide the full name of HBSS once before use of HBSS.

(line 159) "use discard" should be "use and discard"

(line 161) Insert "and" before "thaw~"

(line 167) "Heat-inactivated" should be "heat-inactivated"

(line 182) Subscript 2 at "CO₂"

(line 186) Subscript 600 at "OD₆₀₀"

(line 191) Insert "and" before "re-suspend~"

(line 437) Insert spaces before and after "plus/minus"

(line 441) Insert comma after "~community"

(Title of Table of Materials) "Name of Material/ Equipment" should be "Name of Materials and Disposables"

All of the previously indicated errors have been corrected.