

Journal of Visualized Experiments

Biological Sample Preparation by High-pressure Freezing, Microwave-assisted Contrast Enhancement, and Minimal Resin Embedding for Volume Imaging --Manuscript Draft--

Article Type:	Invited Methods Article - JoVE Produced Video
Manuscript Number:	JoVE59156R2
Full Title:	Biological Sample Preparation by High-pressure Freezing, Microwave-assisted Contrast Enhancement, and Minimal Resin Embedding for Volume Imaging
Keywords:	Neuroscience, Focused ion beam scanning electron microscopy, FIB-SEM, minimal resin embedding, High-pressure freezing, microwave-assisted processing, sample processing, 3D electron microscopy, 3D reconstruction
Corresponding Author:	Wiebke Möbius Max-Planck-Institut für Experimentelle Medizin Göttingen, GERMANY
Corresponding Author's Institution:	Max-Planck-Institut für Experimentelle Medizin
Corresponding Author E-Mail:	moebius@em.mpg.de
Order of Authors:	Anna M. Steyer Torben Ruhwedel Wiebke Möbius
Additional Information:	
Question	Response
Please indicate whether this article will be Standard Access or Open Access.	Open Access (US\$4,200)
Please indicate the city, state/province, and country where this article will be filmed . Please do not use abbreviations.	Göttingen, Germany



MAX-PLANCK-INSTITUTE
of Experimental Medicine



–Electron Microscopy Core Unit–
Department of Neurogenetics
Hermann-Rein-Str. 3
D -37075 Göttingen
Germany

Wiebke Möbius, PhD

Phone.: +49 (551) 3899 786
e-mail: moebius@em.mpg.de

Ronald Myers, PhD
JoVE, Editorial Office
1 Alewife Center
Suite 200
Cambridge, MA 02140

Göttingen, September 27, 2018

Dear Dr. Myers,

Please find enclosed our manuscript “Preparation of biological samples through high-pressure freezing, microwave-assisted processing and minimal resin embedding for FIB-SEM” prepared as invited submission to JoVE.

Since life science has seen many different advances in the realm of acquiring and analyzing samples in 3D the methods of sample preparation have become very important. Depending on the scientific question and the structure of interest different methods can be applied to prepare samples for electron microscopy.

For best sample preservation and best contrast we have combined different important techniques: High-pressure freezing is providing structural preservation close to the native state, while chemical fixation and contrast enhancement by a series of heavy metal impregnations is the best method to obtain excellent contrast for 3D imaging in the scanning electron microscope. By combining cryo-immobilization, freeze-substitution, followed by microwave-assisted post-staining for contrast enhancement, we manage to combine the best of both techniques. In the last preparation sample step the use of minimal resin embedding allows direct and faster targeting inside the FIB-SEM and reduces the time spend on exposing the region of interest.

In our manuscript we describe in detail the necessary preparative steps to provide a helpful resource for researchers working with 3D electron microscopy (FIB-SEM, SBEM and array tomography).

Thank you for handling our manuscript and I am looking forward to your response.

Sincerely,

(Dr. Wiebke Möbius)

TITLE:

Biological Sample Preparation by High-pressure Freezing, Microwave-assisted Contrast Enhancement, and Minimal Resin Embedding for Volume Imaging

AUTHORS AND AFFILIATIONS:

Anna M. Steyer^{1,2}, Torben Ruhwedel¹, Wiebke Möbius^{1,2,3}

¹Electron Microscopy Core Unit, Max Planck Institute of Experimental Medicine, Göttingen, Germany

²Center Nanoscale Microscopy and Molecular Physiology of the Brain (CNMPB), Göttingen, Germany

³Corresponding Author:

Wiebke Möbius (moebius@em.mpg.de)

E-mail Addresses of Co-authors:

Anna M. Steyer (steyer@em.mpg.de)

Torben Ruhwedel (ruhwedel@em.mpg.de)

KEYWORDS:

Neuroscience, focused ion beam scanning electron microscopy, FIB-SEM, minimal resin embedding, high-pressure freezing, microwave-assisted processing, sample processing, 3D electron microscopy, 3D reconstruction

SUMMARY:

Here we present a protocol for combining two sample processing techniques, high-pressure freezing and microwave-assisted sample processing, followed by minimal resin embedding for acquiring data with a focused ion beam scanning electron microscope (FIB-SEM). This is demonstrated using a mouse tibial nerve sample and *Caenorhabditis elegans*.

ABSTRACT:

The described sample preparation technique is designed to combine the best quality of ultrastructural preservation with the most suitable contrast for the imaging modality in a focused ion beam scanning electron microscope (FIB-SEM), which is used to obtain stacks of sequential images for 3D reconstruction and modelling. High-pressure freezing (HPF) allows close to native structural preservation, but the subsequent freeze substitution often does not provide sufficient contrast, especially for a bigger specimen, which is needed for high-quality imaging in the SEM required for 3D reconstruction. Therefore, in this protocol, after the freeze substitution, additional contrasting steps are carried out at room temperature. Although these steps are performed in a microwave, it is also possible to follow traditional bench processing, which requires longer incubation times. The subsequent embedding in minimal amounts of resin allows for faster and more precise targeting and preparation inside the FIB-SEM. This protocol is especially useful for samples that require preparation by high-pressure freezing for a reliable ultrastructural preservation but do not gain enough contrast during the freeze substitution for

45 volume imaging using FIB-SEM. In combination with the minimal resin embedding, this protocol
46 provides an efficient workflow for the acquisition of high-quality volume data.

47 48 **INTRODUCTION:**

49 High-pressure freezing is the sample preparation method of choice for obtaining high-quality
50 ultrastructural preservation, which represents the native state of a sample much better than
51 conventional preparation methods using chemical fixation¹. This cryo-preparation method is
52 useful for samples such as myelinated mouse tissue² and a strict requirement for use of the model
53 organism *Caenorhabditis elegans*³. After freeze substitution and resin embedding, these samples
54 are usually analyzed by transmission electron microscopy (TEM) or electron tomography (ET). If
55 bigger volumes must be imaged using FIB-SEM or serial block-face imaging for high-resolution
56 large-scale 3D reconstructions, in our experience proper imaging by SEM is often hampered by
57 the lack of contrast. In the FIB-SEM, the image is usually recorded by the detection of
58 backscattered electrons from the primary electron beam. The yield of backscattered electrons is
59 proportional to the content of heavy metals in the sample. Therefore, protocols were especially
60 designed for volume imaging to enhance the contrast by additional heavy metal impregnation.
61 Such methods are based on chemically fixed samples and apply a combination of osmium
62 tetroxide-thiocarbohydrazide-osmium tetroxide⁴, as described by Knott et al.⁵, for serial block-
63 face and focused ion beam scanning electron microscopy. Modifications including the use of
64 formamide and pyrogallol⁶ or lead aspartate⁷ have been successfully applied for different imaging
65 techniques.

66
67 The protocol provided here combines the cryo-preparation of specimens by HPF and freeze
68 substitution with subsequent microwave-assisted processing for enhanced contrast using
69 thiocarbohydrazide/osmium tetroxide in acetone at room temperature. We demonstrate this on
70 the myelinated nervus tibialis of mice and in *Caenorhabditis elegans*, which represent samples
71 that require high-pressure freezing for high-quality ultrastructural preservation. In addition, it is
72 shown how, after dehydration and infiltration, the samples are embedded with as little resin as
73 possible. This minimal resin embedding⁸ allows for faster targeting of the structure of interest
74 and reduces the time spent on sample processing, including less time required for exposing the
75 region of interest with the ion beam. After performing further sample preparation steps inside
76 the microscope, imaging and milling of the sample is carried out continuously to acquire a stack
77 of images. For 3D visualization, image processing software (IMOD) is used to reconstruct parts of
78 the dataset.

79
80 Our workflow describes how the most suitable contrasting of samples for volume imaging can be
81 combined with the best ultrastructural preservation by HPF and freeze substitution. This is useful
82 for samples that strictly require cryo-preparation. Applications are limited to small samples that
83 can be prepared by HPF. In samples of different nature, such as plant material or microorganisms,
84 this protocol requires adaptation.

85 86 **PROTOCOL:**

87
88 All experiments including samples from animals described here have been approved by the

Institutional Animal Care and the Lower Saxony State Office for Customer Protection and Food Safety (LAVES).

1. High-pressure freezing and freeze substitution

1.1 Dissect the nervus tibialis from a mouse (e.g., C57Bl6N, 12 weeks, female)⁹.

1.2 Immerse the nervus tibialis in a droplet of 20% polyvinylpyrrolidone (1 g of PVP in 5 mL) in phosphate buffered saline (PBS) and cut pieces of 2 mm length. Then, place it in a metal sample carrier (Type A, 0.2 mm depth) using fine forceps. Add another flat carrier (Type B) coated with a thin layer of hexadecane as a lid and insert this assembly into the specimen cartridge.

1.3 Transfer several *C. elegans* suspended in a droplet of 20% bovine serum albumin (BSA) in M9 (see **Table of Materials**) with a disposable plastic pipette into the metal carrier (Type A). Then, add a second carrier as lid on top (Type B) and assemble the cartridge.

1.4 For both of the samples, proceed with the following: high-pressure freeze the sample carrier assemblies one-by-one by loading them into the three-piece cartridge in the loading station of the high-pressure freezer. Press the process button according to the manufacturer's operating instructions.

NOTE: Both types of samples can be processed together in the subsequent freeze substitution.

1.5 Place the samples into cryovials containing 2 mL of frozen 0.1% tannic acid in acetone. Perform the transfer in a bath of liquid nitrogen without spilling liquid nitrogen into the vials. Transfer the cryovials into an automatic freeze substitution unit¹⁰ set at -90 °C and start the program.

NOTE: The samples are kept at -90 °C for 100 h. Tannic acid before osmification is used as mordant to increase the uptake of osmium tetroxide¹¹.

1.6 Manually wash the samples 3x for 30 min with 2 mL of acetone at -90 °C in the freeze substitution unit.

1.7 Leave the samples in 2 mL of 2% osmium tetroxide, 0.1% uranyl acetate in acetone for continued staining in the automatic freeze substitution unit for 7 h at -90 °C.

CAUTION: Osmium tetroxide is toxic and should be handled under a fume hood, and protective equipment should be worn.

NOTE: The freeze substitution unit automatically raises the temperature to -20 °C at 5 °C/h. The samples are kept at -20 °C for 16 h in the freeze substitution unit. The temperature will be raised automatically to 4 °C at 10 °C/h.

1.8 Exchange the osmium tetroxide solution with pure acetone when the temperature has reached 4 °C. Remove the cryovials from the freeze substitution unit.

2. Microwave-assisted processing

NOTE: Perform all of the following steps at room temperature¹² using a temperature control unit to keep the temperature stable (see **Table of Materials**).

2.1 Leave the caps of the reaction tubes open during processing in the microwave.

2.2 Take the metal sample carriers out of the cryovials and remove the samples from the metal carrier using fine forceps or a needle, while keeping the samples submersed in acetone in a watch glass dish (150 mm).

2.3 Transfer the samples into 2 mL reaction tubes using fine forceps or a pipette and wash with 1 mL of acetone four times for 40 s at 250 W.

CAUTION: Thiocarbohydrazide is toxic and should be handled under a fume hood, protective equipment should be worn.

2.4 Stain samples with 1 mL of 1% thiocarbohydrazide in acetone for 14 min at 150 W to increase the contrast. To perform the staining, pipette the thiocarbohydrazide solution into the reaction tube, place the tube in the microwave, and set the program to a power level of 150 W (with the vacuum function turned on) for 2 min on/2 min off, iterating for 14 min total. Start the microwave.

NOTE: Thiocarbohydrazide reacts with the osmium tetroxide that was applied during the freeze substitution. It forms a bridge, allowing more osmium tetroxide to be deposited onto the original osmium tetroxide sites¹³.

2.5 Wash the samples 4x with 1 mL of acetone for 40 s at 250 W. Pipette the acetone into a reaction tube, place the tube into the microwave, and select 250 W for 40 s. Start the microwave.

2.6 Stain in 1 mL of 2% osmium tetroxide in acetone for 14 min at 150 W. Pipette the osmium tetroxide solution into a reaction tube, place the tube into the microwave, and set the program to a power level of 150 W (with the vacuum function turned on) for 2 min on/2 min off, iterating for 14 min total. Start the microwave.

2.7 Wash the samples 4x with 1 mL of acetone for 40 s at 250 W (as done in step 2.5).

2.8 Infiltrate with 1 mL increasing concentrations of resin in acetone (see **Table of Materials**) of 25%, 50%, 75%, 90%, 100%, and 100% for 3 min each at 250 W. Pipette the resin into a reaction tube, place the tube into the microwave, and set the program to a power level of 250 W (with the vacuum function turned on) for 3 min. Start the microwave.

3. Minimal resin embedding⁸

3.1 Take the *nervus tibialis* and *C. elegans* out of the reaction tube with a toothpick and place them on a piece of plastic film (see **Table of Materials**).

3.2 Use the toothpick to gently push the sample around on the plastic film until no remaining resin is detected. Use a halogen lamp for heating (see **Table of Materials**) so the resin becomes less viscous and is able to be removed more easily. Place the halogen lamp close enough to heat up the resin (being careful not to burn hands).

3.3 Polymerize the samples for at least 48 h at 60 °C on top of the plastic film in the oven.

4. Preparation for FIB-SEM

4.1 Cut out the polymerized samples together with the plastic film using a razor blade at a size fitting the SEM stub and attach them to the SEM stubs using a conductive silver resin (see **Table of Materials**). Polymerize again at 60 °C for at least 4 h or overnight.

4.2 Sputter coat the samples on the SEM stub with gold for 1 min at 35 mA using a sputter coater (platinum/palladium can also be used; a 10 nm thick coating is sufficient) and place them inside the FIB-SEM.

5. Data acquisition inside the FIB-SEM

5.1 Image the samples with the secondary electron detector using the basic software driving the microscope (see **Table of Materials**). The sample should be oriented so that the region of interest (e.g., middle part of the *nervus tibialis* or the *C. elegans*) is in the field of view.

NOTE: To perform the data acquisition, tilt the stage to a position so that the sample faces the ion beam at a 90° angle at an appropriate working distance (5 mm) in the so-called coincidence point of the ion and electron beam. Using our instrument, this is achieved at a stage tilt of 54° and 5 mm working distance.

5.2 To set up the correct position of the sample, center a common feature at a 0° tilt while imaging with the secondary electron detector. Slowly tilt to 54° (5°, 20°, 54°), recentering the same object by moving the M-axis.

5.3 Find the coincidence point by centering a feature while imaging with the secondary electron detector at 54°, followed by moving the feature to the central position in the FIB mode. Perform this by displaying the crosshairs in the SEM software to have an indication of the center. Then first move the selected sample feature to the center of the image area by using the center point function of the SEM software. Then center the feature along the y-axis by moving the stage in z. Any final offset between FIB and SEM is corrected with the SEM beam shift.

5.4 Open the advanced software (see **Table of Materials**) for recording 3D datasets and follow the software wizard step-by-step.

5.5 At the region of interest, deposit carbon or platinum (400 nm) on top of the ROI using a 3 nA current to allow even milling and reduce artifacts induced by charging.

NOTE: By drawing the region of interest to be milled on the specimen surface imaged with the FIB (width, height, depth), the software calculates and superimposes the sizes of the different sample preparation features, such as the trenches to be milled or area for platinum/carbon deposition. Also, be cautious of imaging the sample surface with too-high FIB currents, as this can damage the sample surface. A current of 50 pA is sufficient for imaging.

5.6 Use the focused ion beam to mill a trench to expose the region of interest (ROI) using a 15/30 nA current.

5.7 Use the focused ion beam to polish cross-section with a 7 nA current.

5.8 After finishing the sample preparation, set up the following imaging parameters: FIB milling parameters in the FIB setup tab (FIB milling current); SEM imaging parameters in the setup tab and the image tuning parameters in the SEM AutoTune tab (perform autofocus and autostigmation every 60 min, 50 nm pixel size, dwell time 3, line average 3). Optimize this for every sample.

5.9 To prevent any thermal drift causing the block-face to drift during the run, leave the room for at least 2 h before starting the acquisition.

5.10 Acquire the dataset in a continuous mill and acquire mode with a 700 pA FIB current. Use 1.5 kV (analytic mode, 900 V) ESB detector with a grid voltage of 400 V to acquire images each with 5 nm pixel size using the advanced software (see **Table of Materials**) and 50 nm slice thickness. One image acquisition takes about 1.5 min with a dwell time of 6 μ s.

5.11 Start the data acquisition. A FIB image at the milling current is acquired to ensure that the sample did not move and the right region of interest is selected. Adjust if necessary.

6. Data visualization

6.1 Open images in Fiji by dragging the folder containing all the images into Fiji and select **Virtual Stack**.

6.2 Crop the region of interest using the rectangle tool (**Image > Crop**).

6.3 Invert the data to show the traditional transmission electron microscopy contrast with membranes showing up in dark (**Edit > Invert**).

6.4 Use TrackEM2¹⁴ (Fiji¹⁵) for alignment. Load the data into TrackEM2 (**File > New > TrackEM2**) by clicking on **layer**. After all images are loaded, align them using multi-layer mosaic function (right-click on **Image > Align > Align multi-layer mosaic**). After alignment, the images are exported as individual tiff-files (right-click on **image > Export > Make flat image**). Select all images that should be exported and choose **save to file**.

6.5 For post-processing, use a Gaussian blur (**Process > Filters > Gaussian blur**; sigma 2) and local contrast enhancement (**Process > Enhance Local Contrast**; CLAHE: blocksize 127, histogram bins 256, maximum slope 1.5), which are applied in Fiji to smooth the image and obtain a better signal-to-noise ratio.

6.6 IMOD¹⁶ is used to perform a manual segmentation and visualize the structure of interest in 3D. Open the dataset in IMOD and select **Drawing tools (Special > Drawing Tools)** to perform the manual segmentation. Different manual tools can be used to follow the structure of interest throughout the volume (for example Join, Sculpt). Use Microscopy Image Browser (MIB¹⁷) for semi-automated segmentation.

REPRESENTATIVE RESULTS:

The workflow starts with a sample (here, a freshly dissected mouse nervus tibialis) being placed in metal carriers for high-pressure freezing (**Figure 1a**). The carriers are recovered from liquid nitrogen (**Figure 1b**) and placed in a freeze substitution unit on top of the frozen first chemical cocktail (**Figure 1c**). After a long freeze substitution protocol including 2% osmium tetroxide and 0.1% uranyl acetate, the samples are removed from the carriers at room temperature (**Figure 1d**). To further enhance the contrast, the samples are transferred to plastic tubes to be processed in the microwave (**Figure 1e**). The vacuum chamber and temperature control unit are used to optimize the process (**Figure 1f**).

To be able to perform the minimal resin embedding, toothpicks and sheets of plastic film are needed (**Figure 2a**). After infiltrating the samples with resin using the microwave, they are placed on pieces of plastic film and moved around until no resin is left on the sample surface. A halogen lamp is used to help drain the remaining resin and leave the sample minimally embedded (**Figure 2b**) on the plastic film. It should be noted that more resin removed from the top of the sample is good. There should still be a small amount left underneath the sample to keep it attached to the substrate. The sample being polymerized on the plastic film is cut and mounted on top of SEM stub with silver conductive resin (**Figure 2c**). The stub is polymerized for at least 4 h at 60 °C (**Figure 2d**). The components should be mixed thoroughly or the mixture may not polymerize correctly. To avoid charging inside the scanning electron microscope, the stub is sputter coated with gold or platinum/palladium (**Figure 2e**).

The samples are placed in the FIB-SEM and imaged with a secondary electron detector to target the region of interest (**Figure 3a,e**). An ion beam is used to remove material directly in front of the region of interest to expose a cross section (**Figure 3b-d, 3f-h**). Standard protocols often

suffer from a lack of membrane contrast (**Figure 3b,f**), whereas the enhanced protocol provides a strong membrane contrast (**Figure 3c-d, 3g-h**).

The EM data (after post-processing) are visualized using IMOD, an image processing and modelling program. To achieve a better understanding of the 3D information, virtual reslicing of the data is used (**Figure 4a**). Different structures of the dataset are segmented manually (**Figure 4b-d**).

FIGURE AND TABLE LEGENDS:

Figure 1: High-pressure freezing, freeze-substitution, and microwave-assisted processing. (a) Sample carrier containing the mouse nervus tibialis, scale bar 3 mm. (b) Sample carrier containing the mouse nervus tibialis after high-pressure freezing, scale bar 3 mm. (c) Automatic freeze substitution (AFS) unit with samples. Inset: custom-made metal container for up to 23 sample vials and two large vials containing chemicals in the AFS. (d) Samples being removed from carriers in a glass dish in acetone, scale bar 3 mm. (e) Samples in reaction tubes to be put in the microwave for processing. (f) Vacuum chamber and temperature control unit of the microwave.

Figure 2: Minimal resin embedding and preparation for the FIB-SEM. (a) Plastic film and toothpicks that are used for the minimal resin embedding, scale bar 4 cm. (b) Nervus tibialis drained of resin on top of the plastic film, scale bar 250 μ m. (c) Nervus tibialis polymerized on plastic film, then cut and mounted on top of the SEM stub with silver conductive resin, scale bar 250 μ m. (d) Samples polymerized on top of the SEM stub, scale bar 3 mm. (e) Samples coated with gold on the SEM stub, scale bar 3 mm.

Figure 3: Preparation of the sample inside the FIB-SEM. (a and e) Secondary electron image inside the FIB-SEM of the sample surface (a) Nervus tibialis, scale bar 100 μ m. (e) *C. elegans*, scale bar 2 μ m. (b-d) and (f-h) Cross-section through sample using ESB detector for imaging. (b and c) Nervus tibialis, scale bar 2 μ m. (f and g) *C. elegans*, scale bar 1 μ m and 200 nm. (b and f) Shown are the results of high-pressure freezing and freeze substitution without enhancement, whereas all other images show results of enhanced freeze substitution. (d and h) Detailed image of the sample using the ESB detector. (d) Nervus tibialis, scale bar 200 nm. (h) *C. elegans*, scale bar 200 nm.

Figure 4: Image acquisition and visualization. (a) EM data shown in IMOD with virtually resliced x/z- and y/z-planes, scale bar 2 μ m. (b) Segmented axons on EM data (blue), Remak bundles (red), myelin sheets (yellow and orange), and mitochondria (turquoise), scale bar 2 μ m. (c and d) 3D model, scale bar 2 μ m and 500 nm.

DISCUSSION:

The protocol was developed to illustrate the optimal preservation and contrast to perform serial block-face imaging with a FIB-SEM. Therefore, we chose to apply cryo-immobilization followed by post-staining using freeze substitution and microwave-assisted processing. Therefore, this

protocol is limited to samples that are small enough for high-pressure freezing. The size limitations of 3 to 6 mm in width and thickness of ~200 μm are established by the size of the sample carrier, which matches the sample size that can be properly frozen with this technique. This is relevant for the mouse nerve sample, since the sciatic nerve is too large in diameter to fit into the 0.2 mm carriers that are required to ensure proper freezing. Therefore, careful dissection of a smaller nerve such as the tibial nerve or other thin nerve such as the femoral nerve is recommended. Since the myelin sheath is sensitive to stretching, great care must be taken during dissection of the fresh and viable nerve to avoid handling artifacts. In general, only viable samples should be used for electron microscopic studies.

Microwave-assisted processing and minimal resin embedding are designed for speeding up the preparation and targeting process. The microwave-assisted processing applying a modified OTO protocol⁴ is used for room temperature chemical fixation. A household microwave will not yield the same results, since there is no homogenous distribution of microwaves, its temperature is not controlled, and there is no vacuum that can be applied. The smaller a sample, the better penetration of the chemicals; therefore, the best results are achieved by smaller samples. To avoid damage to the sample by overheating, temperature control and application of the minimally required microwave power are critical. The microwave-assisted processing steps can be performed on the bench if there is no microwave available, which will lead to longer processing times. To directly target structures in the SEM, it is crucial to remove as much resin as possible from the top of the sample. After recording a dataset, post-processing of the raw data is necessary to reduce file size and improve the signal-to-noise ratio. Modern volume imaging techniques produce large amounts of data. Therefore, to perform the data processing in a fast and sufficient manner, sufficient RAM on the workstation is needed. For alignment operations at least two times as much RAM as the dataset size is required.

This protocol has been tested on the nervus tibialis of the mouse as well as in *C. elegans*. Hall et al.¹² used a similar enhancement step after their freeze substitution on the bench for preparation of *C. elegans*. For any other model organism such as the zebrafish, adjustments of the protocol are likely necessary. One possible modification is to change the composition of the freeze substitution cocktail, such as by the addition of water that is used for contrast enhancement¹⁸. Moreover, the duration of the freeze substitution has to be adapted to the sample and can be considerably shortened according to the quick freeze substitution protocol¹⁹. One possibility is the application of agitation for accelerating the freeze substitution process²⁰. After the freeze substitution, further modifications are possible, such as repeated application of enhancing chemicals and osmium tetroxide²¹. During microwave processing, the temperature, incubation times, and power settings can be varied to optimize results for the respective sample.

This protocol shows that such an enhancement can be combined with other freeze substitution protocols and different types of samples as described by Hall¹² that are imaged in a FIB-SEM or by serial block-face scanning electron microscopy. These imaging techniques require enhanced contrast, which is less important for transmission electron microscopy.

ACKNOWLEDGMENTS:

The FIB-SEM and A.S. (the position of the FIB-SEM operator) are funded by the Cluster of Excellence and Deutsche Forschungsgemeinschaft (DFG) Research Center Nanoscale Microscopy and Molecular Physiology of the Brain (CNMPB). We thank the lab of Thomas Müller-Reichert for providing the *C. elegans* samples. We thank Ulrich Weikert for participating in the movie.

DISCLOSURES:

No conflicts of interest declared.

REFERENCES:

1. Studer, D., Humbel, B. M., Chiquet, M. Electron microscopy of high pressure frozen samples: bridging the gap between cellular ultrastructure and atomic resolution. *Histochemistry and Cell Biology*. **130** (5), 877–889, doi: 10.1007/s00418-008-0500-1 (2008).
2. Möbius, W., Nave, K. -A., Werner, H. B. Electron microscopy of myelin: Structure preservation by high-pressure freezing. *Brain Research*. **1641**, 92–100, doi: 10.1016/J.BRAINRES.2016.02.027 (2016).
3. Mancuso, J., Lich, B., McDonald, K. Three-Dimensional Reconstruction Methods for *Caenorhabditis elegans* Ultrastructure. *Methods in Cell Biology*. **96**, 331–361, doi: 10.1016/S0091-679X(10)96015-9 (2010).
4. Deerinck, T. J., Bushong, E. A., Thor, A., Ellisman, M. H. NCMIR methods for 3D EM: A new protocol for preparation of biological specimens for serial block face scanning electron microscopy. <<https://www.ncmir.ucsd.edu/sbem-protocol>> (2010).
5. Knott, G., Rosset, S., Cantoni, M. Focussed Ion Beam Milling and Scanning Electron Microscopy of Brain Tissue. *Journal of Visualized Experiments*. (53), e2588–e2588, doi: 10.3791/2588 (2011).
6. Eberle, A. L. et al. High-resolution, high-throughput imaging with a multibeam scanning electron microscope. *Journal of Microscopy*. **259** (2), 114–120, doi: 10.1111/jmi.12224 (2015).
7. Hua, Y., Laserstein, P., Helmstaedter, M. Large-volume en-bloc staining for electron microscopy-based connectomics. *Nature Communications*. **6**, 1–7, doi: 10.1038/ncomms8923 (2015).
8. Schieber, N.L. et al. Minimal resin embedding of multicellular specimens for targeted FIB-SEM imaging. *Methods in Cell Biology*. **140**, doi: 10.1016/bs.mcb.2017.03.005, (2017).
9. Batt, J. A. E., Bain, J. R. Tibial nerve transection - a standardized model for denervation-induced skeletal muscle atrophy in mice. *Journal of Visualized Experiments*. (81), e50657, doi: 10.3791/50657 (2013).
10. Möbius, W. et al. Electron Microscopy of the Mouse Central Nervous System. *Methods in Cell Biology*. **96**, 475–512, doi: 10.1016/S0091-679X(10)96020-2 (2010).
11. Hayat, M. A. *Stains and Cytochemical Methods*. Plenum Press, New York and London. (1993).
12. Hall, T. J., Hartweig, E., Nguyen, K. C. Q. OTO Fixation for SEM and Blockface Imaging. <www.wormatlas.org/EMmethods/OTOFix.htm> (2018).
13. Tapia, J. C. et al. High-contrast en bloc staining of neuronal tissue for field emission scanning electron microscopy. *Nature Protocols*. **7** (2), 193–206, doi: 10.1038/nprot2011439 (2012).

- 441 14. Cardona, A. *et al.* TrakEM2 software for neural circuit reconstruction. *PLoS ONE*. **7** (6), doi:
442 10.1371/journal.pone.0038011 (2012).
- 443 15. Schindelin, J. *et al.* Fiji: An open-source platform for biological-image analysis. *Nature*
444 *Methods*. **9** (7), 676–682, doi: 10.1038/nmeth.2019 (2012).
- 445 16. Kremer, J. R., Mastronarde, D. N., McIntosh, J. R. Computer visualization of three-
446 dimensional image data using IMOD. *Journal of Structural Biology*. **116** (1), 71–6, doi:
447 10.1006/jsbi.1996.0013 (1996).
- 448 17. Belevich, I., Joensuu, M., Kumar, D., Vihinen, H., Jokitalo, E. Microscopy Image Browser: A
449 Platform for Segmentation and Analysis of Multidimensional Datasets. *PLoS Biology*. **14** (1), 1–
450 13, doi: 10.1371/journal.pbio.1002340 (2016).
- 451 18. Walther, P., Ziegler, A. Freeze substitution of high-pressure frozen samples: The visibility
452 of biological membranes is improved when the substitution medium contains water. *Journal of*
453 *Microscopy*. **208** (1), 3–10, doi: 10.1046/j.1365-2818.2002.01064.x (2002).
- 454 19. McDonald, K. L., Webb, R. I. Freeze substitution in 3 hours or less. *Journal of Microscopy*.
455 **243** (3), 227–233, doi: 10.1111/j.1365-2818.2011.03526.x (2011).
- 456 20. Reipert, S. *et al.* Agitation Modules: Flexible Means to Accelerate Automated Freeze
457 Substitution. *Journal of Histochemistry & Cytochemistry*. doi: 10.1369/0022155418786698
458 (2018).
- 459 21. Lešer, V., Drobne, D., Pipan, Ž., Milani, M., Tatti, F. Comparison of different preparation
460 methods of biological samples for FIB milling and SEM investigation. *Journal of Microscopy*. **233**
461 (2), 309–319, doi: 10.1111/j.1365-2818.2009.03121.x (2009).
- 462

Figure 1

[Click here to access/download;Figure;Figure 1_HPFF_MW.tif](#)

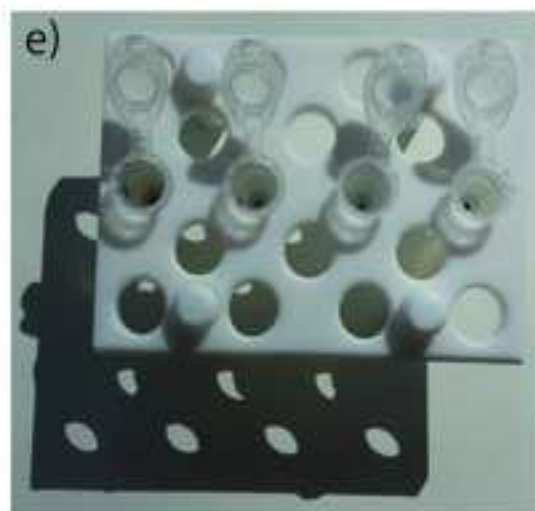
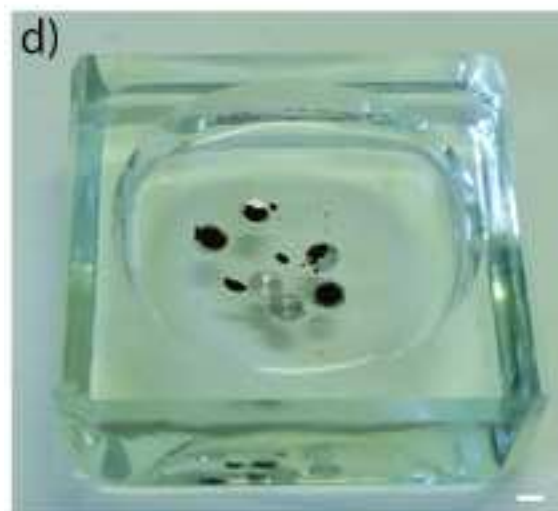
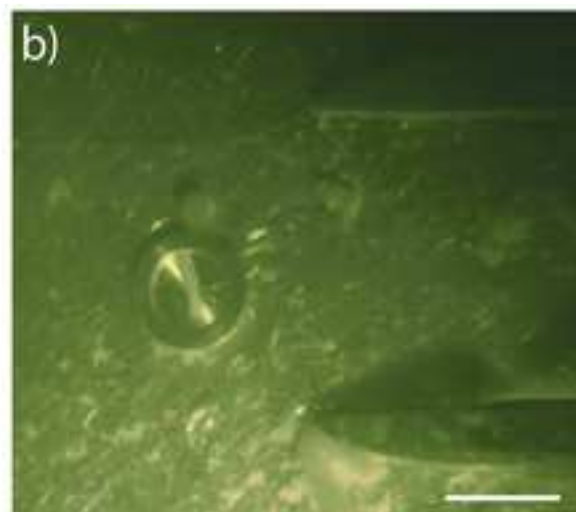
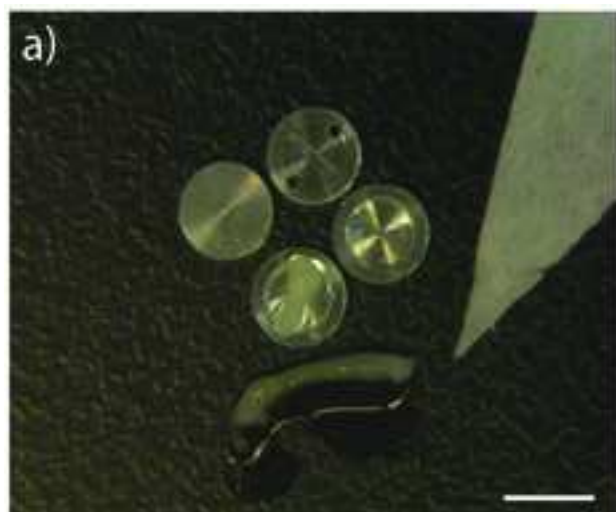
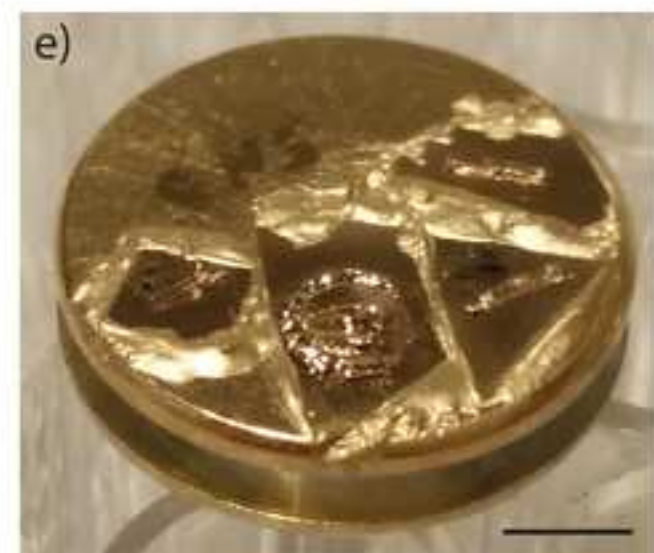
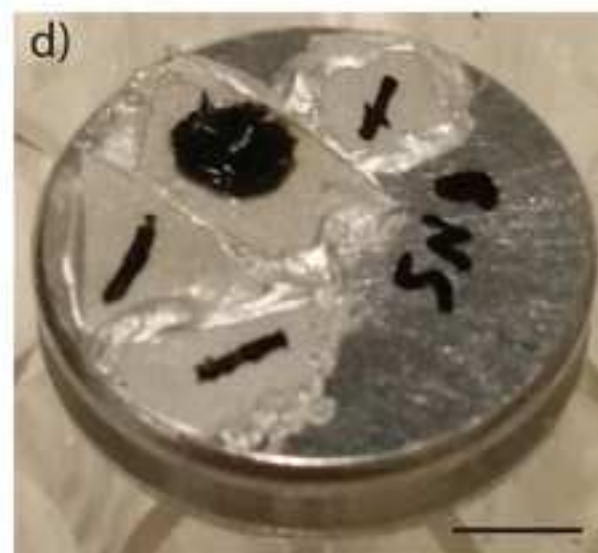
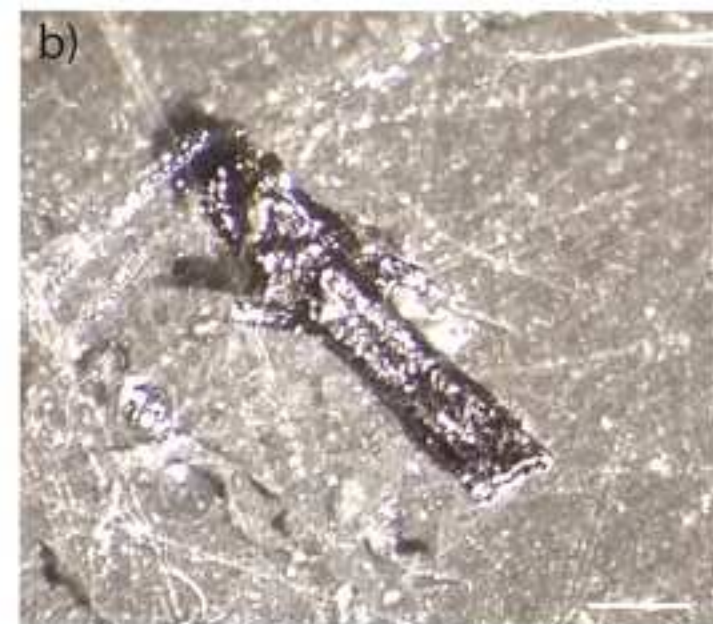
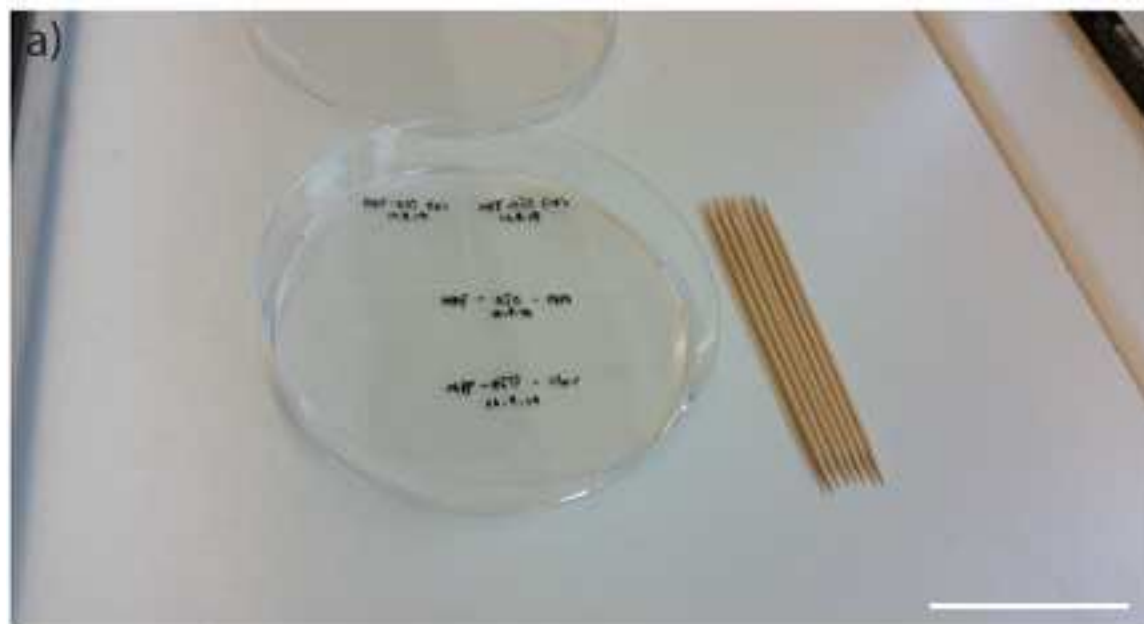


Figure 2

[Click here to access/download;Figure;Figure2_Mounting.tif](#)



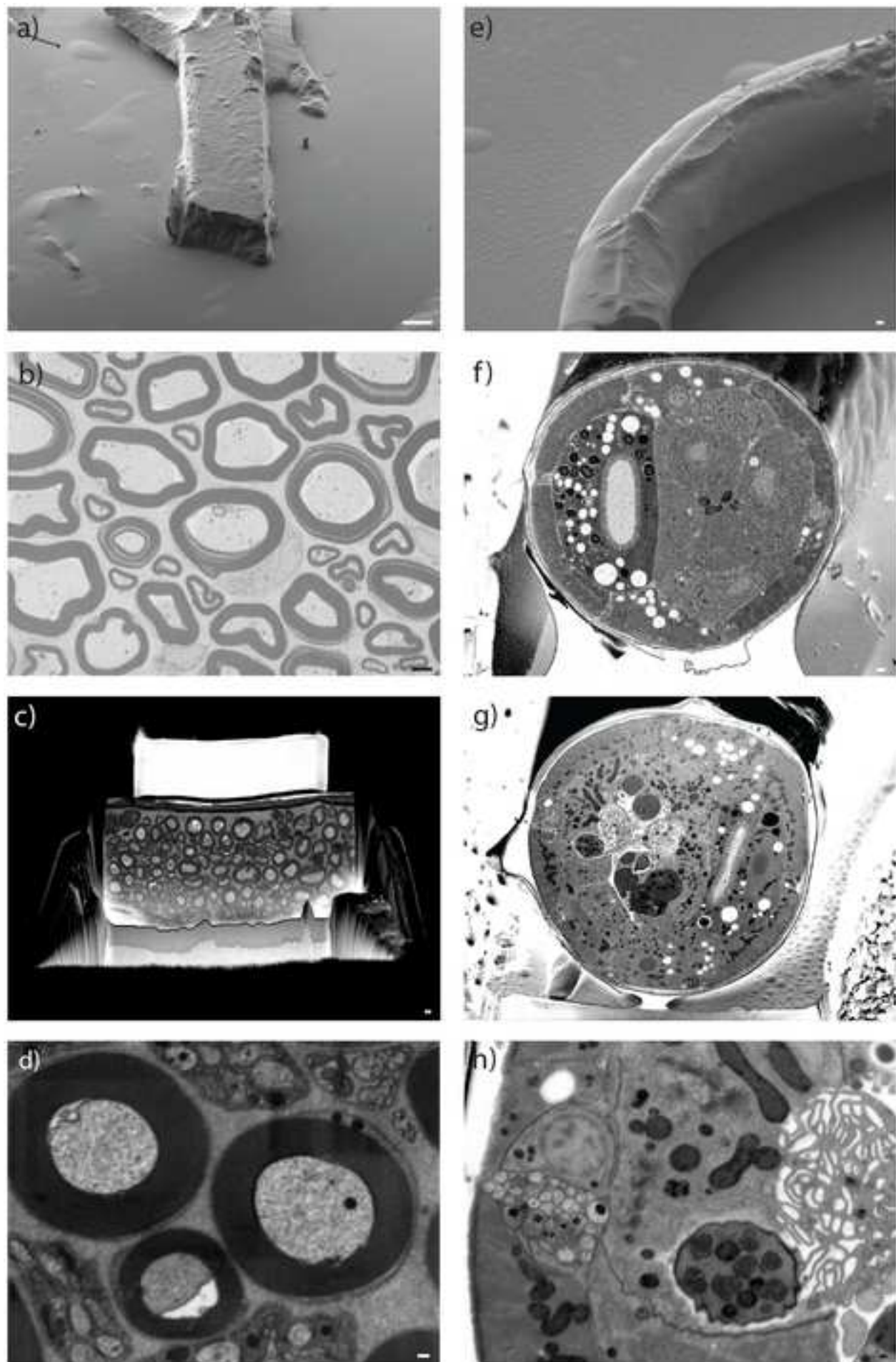
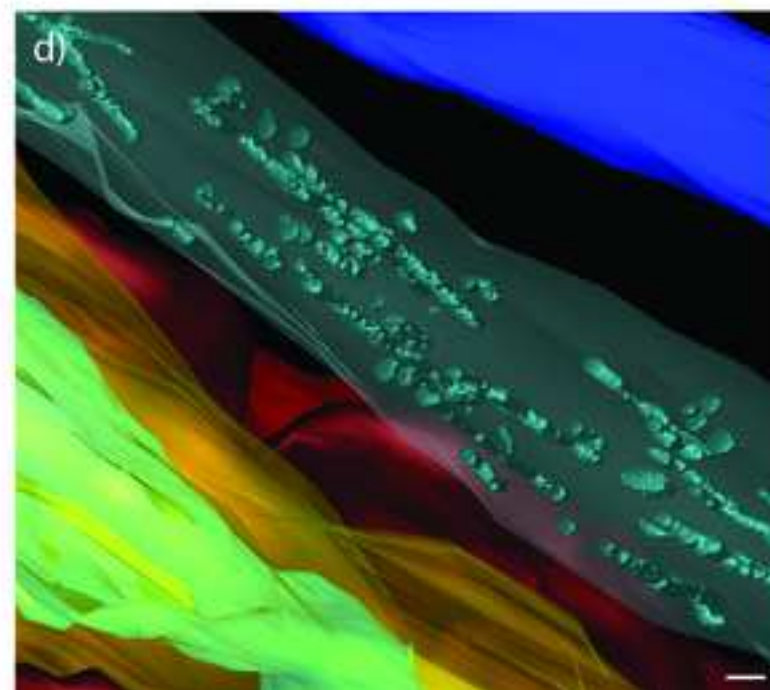
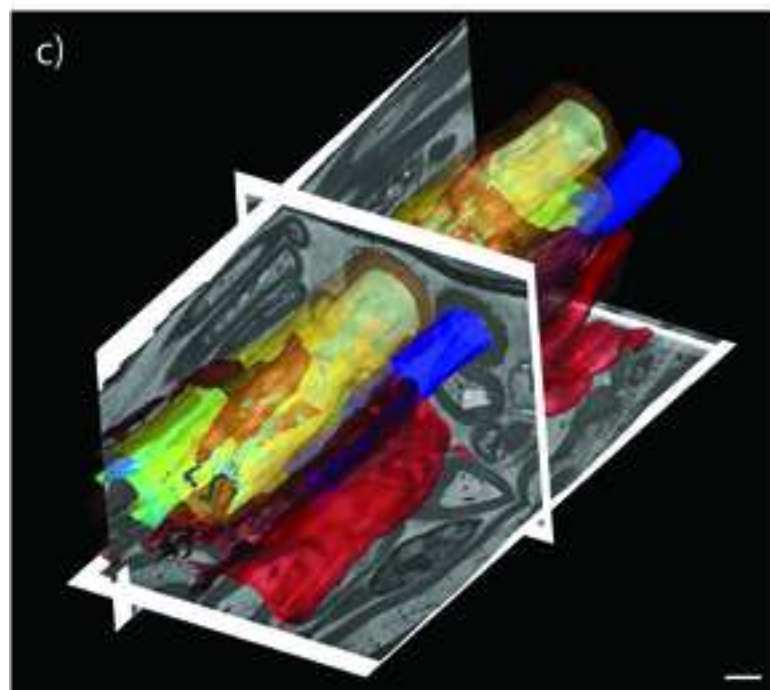
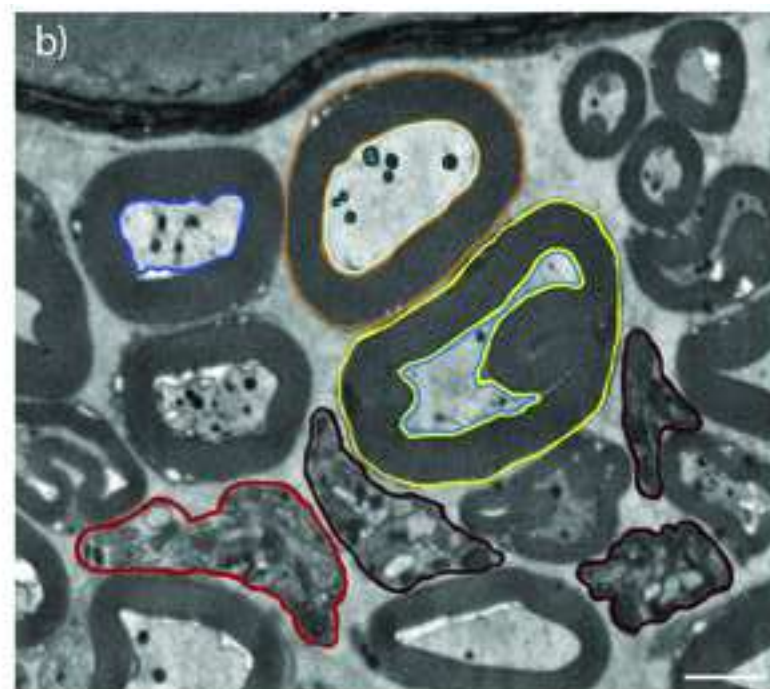
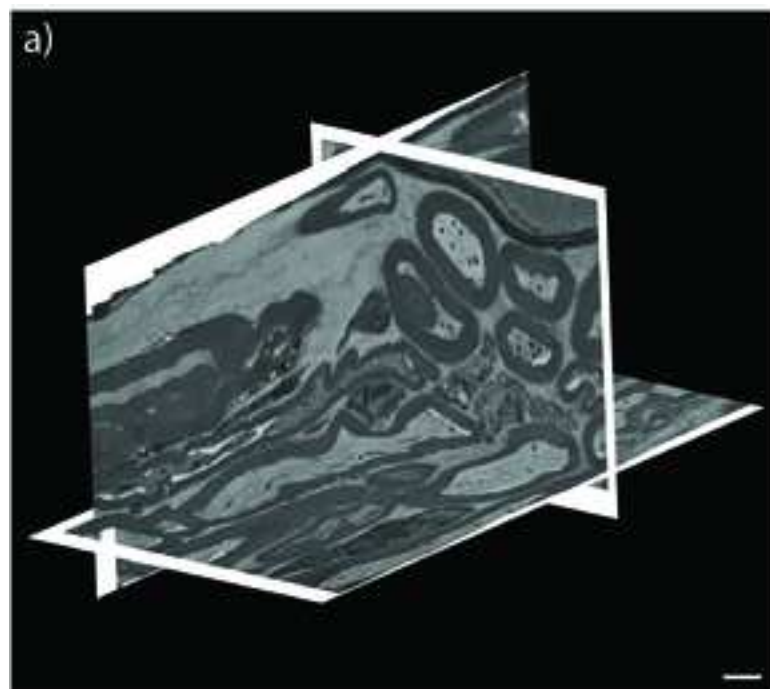


Figure 4



Name of Material/ Equipment	Company	Catalog Number	Comments/Description
Instrumentation			
Leica HPM100	Leica		
Automatic Freeze Substitution	Leica		
Laboratory microwave with temperature control unit	Ted Pella		
EM ACE600 with gold target	Leica		
Crossbeam 540	Zeiss		
Halogen lamp 12 V/ 20 W	Osram		
Oven	VWR		
Freezing			
Bovine Serum Albumin	Sigma-Aldrich	A2153	
M9	Homemade	According to	C. Elegans- A practical approach I.A.Hope
Hexadecene	Sigma-Aldrich	52276	
Polyvinylpyrrolidone	Sigma-Aldrich	P2307	
A type carrier	Wohllwend GmbH	#241	
B type carrier	Wohllwend GmbH	#242	
Slit carrier	Wohllwend GmbH	#446	
Plastic Pasteur pipettes	VWR	612-1684	
Forceps	FST	11200-10	
Freeze substitution			
Acetone	science services	10015	
Tannic acid	Sigma-Aldrich	403040	
Osmium tetroxide	EMS	19100	
Uranyl acetate	SPI-Chem	02624-AB	
Acetone	EMS	10015	
Thiocarbohydrazide	Sigma-Aldrich	223220	
Nunc CryoTubes	Sigma-Aldrich	V7884-450EA	
Watch glass dishes, 150 mm	VWR	216-2189H	
Eppendorf tubes	Eppendorf	0030 120.094	
Durcupan resin	Sigma-Aldrich	44610	
Mounting			
SEM stubs	Science Services	E75200	

Aclar	Science Services	50425-10	
Toothpicks			
filter paper	VWR	512-3618	
conductive silver resin	EMS	12670-EE	EPO-TEK EE 129-4
Software			
Image acquisition	Zeiss	SmartSEM	
Image acquisition	Zeiss	Atlas5 A3D	
Image processing	Open source	Fiji	http://fiji.sc/#download
Image visualization	Open source	IMOD	http://bio3d.colorado.edu/imod/



1 Alewife Center #200
Cambridge, MA 02140
tel. 617.945.9051
www.jove.com

ARTICLE AND VIDEO LICENSE AGREEMENT

Title of Article:

Author(s):

Preparation of biological samples through high-pressure freezing,
microwave-assisted processing and minimal resin embedding for FIB-SEM
Anna M. Steyer, Torben Ruhwedel, Wiebke Möbius

Item 1: The Author elects to have the Materials be made available (as described at <http://www.jove.com/publish>) via:

☐ Standard Access

☒ Open Access

Item 2: Please select one of the following items:

☒ The Author is **NOT** a United States government employee.

☐ The Author is a United States government employee and the Materials were prepared in the course of his or her duties as a United States government employee.

☐ The Author is a United States government employee but the Materials were NOT prepared in the course of his or her duties as a United States government employee.

ARTICLE AND VIDEO LICENSE AGREEMENT

1. **Defined Terms.** As used in this Article and Video License Agreement, the following terms shall have the following meanings: **"Agreement"** means this Article and Video License Agreement; **"Article"** means the article specified on the last page of this Agreement, including any associated materials such as texts, figures, tables, artwork, abstracts, or summaries contained therein; **"Author"** means the author who is a signatory to this Agreement; **"Collective Work"** means a work, such as a periodical issue, anthology or encyclopedia, in which the Materials in their entirety in unmodified form, along with a number of other contributions, constituting separate and independent works in themselves, are assembled into a collective whole; **"CRC License"** means the Creative Commons Attribution-Non Commercial-No Derivs 3.0 Unported Agreement, the terms and conditions of which can be found at: <http://creativecommons.org/licenses/by-nc-nd/3.0/legalcode>; **"Derivative Work"** means a work based upon the Materials or upon the Materials and other pre-existing works, such as a translation, musical arrangement, dramatization, fictionalization, motion picture version, sound recording, art reproduction, abridgment, condensation, or any other form in which the Materials may be recast, transformed, or adapted; **"Institution"** means the institution, listed on the last page of this Agreement, by which the Author was employed at the time of the creation of the Materials; **"JoVE"** means MyJoVE Corporation, a Massachusetts corporation and the publisher of The Journal of Visualized Experiments; **"Materials"** means the Article and / or the Video; **"Parties"** means the Author and JoVE; **"Video"** means any video(s) made by the Author, alone or in conjunction with any other parties, or by JoVE or its affiliates or agents, individually or in collaboration with the Author or any other parties, incorporating all or any portion

of the Article, and in which the Author may or may not appear.

2. **Background.** The Author, who is the author of the Article, in order to ensure the dissemination and protection of the Article, desires to have the JoVE publish the Article and create and transmit videos based on the Article. In furtherance of such goals, the Parties desire to memorialize in this Agreement the respective rights of each Party in and to the Article and the Video.

3. **Grant of Rights in Article.** In consideration of JoVE agreeing to publish the Article, the Author hereby grants to JoVE, subject to Sections 4 and 7 below, the exclusive, royalty-free, perpetual (for the full term of copyright in the Article, including any extensions thereto) license (a) to publish, reproduce, distribute, display and store the Article in all forms, formats and media whether now known or hereafter developed (including without limitation in print, digital and electronic form) throughout the world, (b) to translate the Article into other languages, create adaptations, summaries or extracts of the Article or other Derivative Works (including, without limitation, the Video) or Collective Works based on all or any portion of the Article and exercise all of the rights set forth in (a) above in such translations, adaptations, summaries, extracts, Derivative Works or Collective Works and (c) to license others to do any or all of the above. The foregoing rights may be exercised in all media and formats, whether now known or hereafter devised, and include the right to make such modifications as are technically necessary to exercise the rights in other media and formats. If the "Open Access" box has been checked in Item 1 above, JoVE and the Author hereby grant to the public all such rights in the Article as provided in, but subject to all limitations and requirements set forth in, the CRC License.

612542.6 For questions, please contact us at submissions@jove.com or +1.617.945.9051.

4. **Retention of Rights in Article.** Notwithstanding the exclusive license granted to JoVE in **Section 3** above, the Author shall, with respect to the Article, retain the non-exclusive right to use all or part of the Article for the non-commercial purpose of giving lectures, presentations or teaching classes, and to post a copy of the Article on the Institution's website or the Author's personal website, in each case provided that a link to the Article on the JoVE website is provided and notice of JoVE's copyright in the Article is included. All non-copyright intellectual property rights in and to the Article, such as patent rights, shall remain with the Author.

5. **Grant of Rights in Video – Standard Access.** This **Section 5** applies if the "Standard Access" box has been checked in **Item 1** above or if no box has been checked in **Item 1** above. In consideration of JoVE agreeing to produce, display or otherwise assist with the Video, the Author hereby acknowledges and agrees that, Subject to **Section 7** below, JoVE is and shall be the sole and exclusive owner of all rights of any nature, including, without limitation, all copyrights, in and to the Video. To the extent that, by law, the Author is deemed, now or at any time in the future, to have any rights of any nature in or to the Video, the Author hereby disclaims all such rights and transfers all such rights to JoVE.

6. **Grant of Rights in Video – Open Access.** This **Section 6** applies only if the "Open Access" box has been checked in **Item 1** above. In consideration of JoVE agreeing to produce, display or otherwise assist with the Video, the Author hereby grants to JoVE, subject to **Section 7** below, the exclusive, royalty-free, perpetual (for the full term of copyright in the Article, including any extensions thereto) license (a) to publish, reproduce, distribute, display and store the Video in all forms, formats and media whether now known or hereafter developed (including without limitation in print, digital and electronic form) throughout the world, (b) to translate the Video into other languages, create adaptations, summaries or extracts of the Video or other Derivative Works or Collective Works based on all or any portion of the Video and exercise all of the rights set forth in (a) above in such translations, adaptations, summaries, extracts, Derivative Works or Collective Works and (c) to license others to do any or all of the above. The foregoing rights may be exercised in all media and formats, whether now known or hereafter devised, and include the right to make such modifications as are technically necessary to exercise the rights in other media and formats. For any Video to which this **Section 6** is applicable, JoVE and the Author hereby grant to the public all such rights in the Video as provided in, but subject to all limitations and requirements set forth in, the CRC License.

7. **Government Employees.** If the Author is a United States government employee and the Article was prepared in the course of his or her duties as a United States government employee, as indicated in **Item 2** above, and any of the licenses or grants granted by the Author hereunder exceed the scope of the 17 U.S.C. 403, then the rights granted hereunder shall be limited to the maximum

rights permitted under such statute. In such case, all provisions contained herein that are not in conflict with such statute shall remain in full force and effect, and all provisions contained herein that do so conflict shall be deemed to be amended so as to provide to JoVE the maximum rights permissible within such statute.

8. **Protection of the Work.** The Author(s) authorize JoVE to take steps in the Author(s) name and on their behalf if JoVE believes some third party could be infringing or might infringe the copyright of either the Author's Article and/or Video.

9. **Likeness, Privacy, Personality.** The Author hereby grants JoVE the right to use the Author's name, voice, likeness, picture, photograph, image, biography and performance in any way, commercial or otherwise, in connection with the Materials and the sale, promotion and distribution thereof. The Author hereby waives any and all rights he or she may have, relating to his or her appearance in the Video or otherwise relating to the Materials, under all applicable privacy, likeness, personality or similar laws.

10. **Author Warranties.** The Author represents and warrants that the Article is original, that it has not been published, that the copyright interest is owned by the Author (or, if more than one author is listed at the beginning of this Agreement, by such authors collectively) and has not been assigned, licensed, or otherwise transferred to any other party. The Author represents and warrants that the author(s) listed at the top of this Agreement are the only authors of the Materials. If more than one author is listed at the top of this Agreement and if any such author has not entered into a separate Article and Video License Agreement with JoVE relating to the Materials, the Author represents and warrants that the Author has been authorized by each of the other such authors to execute this Agreement on his or her behalf and to bind him or her with respect to the terms of this Agreement as if each of them had been a party hereto as an Author. The Author warrants that the use, reproduction, distribution, public or private performance or display, and/or modification of all or any portion of the Materials does not and will not violate, infringe and/or misappropriate the patent, trademark, intellectual property or other rights of any third party. The Author represents and warrants that it has and will continue to comply with all government, institutional and other regulations, including, without limitation all institutional, laboratory, hospital, ethical, human and animal treatment, privacy, and all other rules, regulations, laws, procedures or guidelines, applicable to the Materials, and that all research involving human and animal subjects has been approved by the Author's relevant institutional review board.

11. **JoVE Discretion.** If the Author requests the assistance of JoVE in producing the Video in the Author's facility, the Author shall ensure that the presence of JoVE employees, agents or independent contractors is in accordance with the relevant regulations of the Author's institution. If more than one author is listed at the beginning of this Agreement, JoVE may, in its sole

ARTICLE AND VIDEO LICENSE AGREEMENT

discretion, elect not take any action with respect to the Article until such time as it has received complete, executed Article and Video License Agreements from each such author. JoVE reserves the right, in its absolute and sole discretion and without giving any reason therefore, to accept or decline any work submitted to JoVE. JoVE and its employees, agents and independent contractors shall have full, unfettered access to the facilities of the Author or of the Author's institution as necessary to make the Video, whether actually published or not. JoVE has sole discretion as to the method of making and publishing the Materials, including, without limitation, to all decisions regarding editing, lighting, filming, timing of publication, if any, length, quality, content and the like.

12. **Indemnification.** The Author agrees to indemnify JoVE and/or its successors and assigns from and against any and all claims, costs, and expenses, including attorney's fees, arising out of any breach of any warranty or other representations contained herein. The Author further agrees to indemnify and hold harmless JoVE from and against any and all claims, costs, and expenses, including attorney's fees, resulting from the breach by the Author of any representation or warranty contained herein or from allegations or instances of violation of intellectual property rights, damage to the Author's or the Author's institution's facilities, fraud, libel, defamation, research, equipment, experiments, property damage, personal injury, violations of institutional, laboratory, hospital, ethical, human and animal treatment, privacy or other rules, regulations, laws, procedures or guidelines, liabilities and other losses or damages related in any way to the submission of work to JoVE, making of videos by JoVE, or publication in JoVE or elsewhere by JoVE. The Author shall be responsible for, and shall hold JoVE harmless from, damages caused by lack of sterilization, lack of cleanliness or by contamination due to


the making of a video by JoVE its employees, agents or independent contractors. All sterilization, cleanliness or decontamination procedures shall be solely the responsibility of the Author and shall be undertaken at the Author's expense. All indemnifications provided herein shall include JoVE's attorney's fees and costs related to said losses or damages. Such indemnification and holding harmless shall include such losses or damages incurred by, or in connection with, acts or omissions of JoVE, its employees, agents or independent contractors.

13. **Fees.** To cover the cost incurred for publication, JoVE must receive payment before production and publication of the Materials. Payment is due in 21 days of invoice. Should the Materials not be published due to an editorial or production decision, these funds will be returned to the Author. Withdrawal by the Author of any submitted Materials after final peer review approval will result in a US\$1,200 fee to cover pre-production expenses incurred by JoVE. If payment is not received by the completion of filming, production and publication of the Materials will be suspended until payment is received.

14. **Transfer, Governing Law.** This Agreement may be assigned by JoVE and shall inure to the benefits of any of JoVE's successors and assignees. This Agreement shall be governed and construed by the internal laws of the Commonwealth of Massachusetts without giving effect to any conflict of law provision thereunder. This Agreement may be executed in counterparts, each of which shall be deemed an original, but all of which together shall be deemed to be one and the same agreement. A signed copy of this Agreement delivered by facsimile, e-mail or other means of electronic transmission shall be deemed to have the same legal effect as delivery of an original signed copy of this Agreement.

A signed copy of this document must be sent with all new submissions. Only one Agreement is required per submission.

CORRESPONDING AUTHOR

Name:	Wiebke Möbius	
Department:	Neurogenetics	
Institution:	Max - Planck - Institute for Experimental Medicine	
Title:		
Signature:		Date: 2018-09-27

Please submit a **signed** and **dated** copy of this license by one of the following three methods:

1. Upload an electronic version on the JoVE submission site
2. Fax the document to +1.866.381.2236
3. Mail the document to JoVE / Attn: JoVE Editorial / 1 Alewife Center #200 / Cambridge, MA 02140



MAX-PLANCK-INSTITUTE of Experimental Medicine



–Electron Microscopy Core Unit–
Department of Neurogenetics
Hermann-Rein-Str. 3
D -37075 Göttingen
Germany

Wiebke Möbius, PhD

Phone.: +49 (551) 3899 786
e-mail: moebius@em.mpg.de

Vineeta Bajaj, PhD
JoVE, Editorial Office
1 Alewife Center
Suite 200
Cambridge, MA 02140

Göttingen, November 12, 2018

Resubmission 59156_R1 "Biological sample preparation by high-pressure freezing, microwave-assisted contrast enhancement and minimal resin embedding for volume imaging"

Dear Dr. Bajaj,

In the attached rebuttal document we carefully addressed the editorial comments. We have rewritten the summary and the discussion, added references and changed the text. We hope that the manuscript meets now all the requirements for publication on JoVE.

Thank you for handling our manuscript and I am looking forward to your response.

Sincerely,

(Dr. Wiebke Möbius)

Editorial comments:

1. The editor has formatted the manuscript to match the journal's style. Please retain the same.
2. Please address all the specific comments marked in the manuscript.

Our answers:

We kept the style and addressed all the comments.

3. For the protocol section, please use imperative tense as if you are directing someone how to do your experiment with all specific details.

Our answer: we applied this rule

4. Please make the protocol crisp but only having one action step per sentence. There can be 2-3 action steps in one step. Please only provide hard experimental steps, knob turns, graphical user interface in the protocol section.
5. Please do not have paragraphs but make substeps instead.

Our answer: We separated protocol steps for more clarity and included substeps.

6. Once formatted please ensure that the protocol is no more than 10 pages and the highlighted portion is no more than 2.75 pages including heading and spacings.

We reduced the highlighted portion to 2.75 pages.

7. Please ensure that there is a result for every section of the protocol.

Our answer: for every protocol section there is a visible result.

8. Please proofread the manuscript carefully before submitting.

Our answer: We did our best.

9. Please obtain explicit copyright permission to reuse any figures from a previous publication. Explicit permission can be expressed in the form of a letter from the editor or a link to the editorial policy that allows re-prints. Please upload this information as a .doc or .docx file to your Editorial Manager account. The Figure must be cited appropriately in the Figure Legend, i.e. "This figure has been modified from [citation]."

Our answer: We did not reuse any figures from published work.