

Journal of Visualized Experiments

A Versatile Method for Mounting Arabidopsis Leaves for Intravital Time-lapse Imaging --Manuscript Draft--

Article Type:	Invited Methods Article - JoVE Produced Video
Manuscript Number:	JoVE59147R1
Full Title:	A Versatile Method for Mounting Arabidopsis Leaves for Intravital Time-lapse Imaging
Keywords:	Live-imaging, time-lapse imaging, leaf, Arabidopsis thaliana, immunity, fluorescent promoter-reporter
Corresponding Author:	Shigeyuki Betsuyaku, Dr.rer.nat. Tsukuba Daigaku Tsukuba, Ibaraki JAPAN
Corresponding Author's Institution:	Tsukuba Daigaku
Corresponding Author E-Mail:	betsuyaku.shige.ge@u.tsukuba.ac.jp
Order of Authors:	Shigeyuki Betsuyaku, Dr.rer.nat. Hiroo Fukuda Nobuhiko Nomura
Additional Information:	
Question	Response
Please indicate whether this article will be Standard Access or Open Access.	Open Access (US\$4,200)
Please indicate the city, state/province, and country where this article will be filmed . Please do not use abbreviations.	Tsukuba city, Ibaraki prefecture, Japan



University of Tsukuba



Faculty of Life and Environmental Sciences
University of Tsukuba

November 22nd, 2018

Dear Editors of JOURNAL of VISUALIZED EXPERIMENTS (JoVE),

We thank you for giving us a chance to revise our manuscript JoVE59147 and for all the valuable comments from the reviewers. Following the comments by the reviewers, we extensively revised the manuscript including the quality of the language. Herewith, we are submitting our revised manuscript entitled, “A simple and versatile mounting method of living Arabidopsis leaves for intravital time-lapse imaging”.

Our re-submission includes:

3 figures,

2 tables,

1 movie

(Our responses to the editorial and peer review comments can be found in the Response letter.)

Again, we thank the reviewers for giving us an opportunity to revise our manuscript for possible publication in JOURNAL of VISUALIZED EXPERIMENTS. These comments improve the quality of our manuscript. We believe that the revised manuscript will be widely cited. We hope very much that you will find it suitable for publication in JOURNAL of VISUALIZED EXPERIMENTS.

Sincerely yours,

Shigeyuki Betsuyaku
University of Tsukuba

Information on corresponding author:

Shigeyuki Betsuyaku
Faculty of Life and Environmental Sciences,
University of Tsukuba
1-1-1, Tennodai, Tsukuba, Ibaraki 305-8577, JAPAN
TEL: +81-29-853-4311
e-mail: betsuyaku.shige.ge@u.tsukuba.ac.jp

TITLE:

A Versatile Method for Mounting *Arabidopsis* Leaves for Intravital Time-lapse Imaging

AUTHORS AND AFFILIATIONS:

Shigeyuki Betsuyaku^{1,2,3}, Nobuhiko Nomura⁴, Hiroo Fukuda²

¹Japan Science and Technology Agency (JST), PRESTO, Kawaguchi, Saitama, Japan

²Department of Biological Sciences, Graduate School of Science, The University of Tokyo, Bunkyo-ku, Tokyo, Japan

³Current affiliation; Faculty of Life and Environmental Sciences, University of Tsukuba, Tsukuba, Ibaraki, Japan

⁴Faculty of Life and Environmental Sciences, University of Tsukuba, Tsukuba, Ibaraki, Japan

Corresponding Author:

Shigeyuki Betsuyaku (betsuyaku.shige.ge@u.tsukuba.ac.jp)

Email Addresses of Co-authors:

Nobuhiko Nomura (nomura.nobuhiko.ge@u.tsukuba.ac.jp)

Hiroo Fukuda (fukuda@bs.s.u-tokyo.ac.jp)

KEYWORDS:

live-imaging, time-lapse imaging, leaf, *Arabidopsis thaliana*, immunity, fluorescent promoter-reporter

SUMMARY:

We report a simple and versatile method for performing fluorescent live-imaging of *Arabidopsis thaliana* leaves over an extended period of time. We use a transgenic *Arabidopsis* plant expressing a fluorescent reporter gene under the control of an immunity-related promoter as an example for gaining spatiotemporal understanding of plant immune responses.

ABSTRACT:

The plant immune response associated with a genome-wide transcriptional reprogramming is initiated at the site of infection. Thus, the immune response is regulated spatially and temporally. The use of a fluorescent gene under the control of an immunity-related promoter in combination with an automated fluorescence microscopy is a simple way to understand spatiotemporal regulation of plant immunity. In contrast to the root tissues that have been used for a number of various intravital fluorescent imaging experiments, there exist few fluorescent live-imaging examples for the leaf tissues that encounter an array of airborne microbial infections. Therefore, we developed a simple method to mount leaves of *Arabidopsis thaliana* plants for live-cell imaging over an extended period of time. We used transgenic *Arabidopsis* plants expressing the *yellow fluorescent protein* (YFP) gene fused to the nuclear localization signal (NLS) under the control of the promoter of a defense-related marker gene, *Pathogenesis-Related 1* (*PR1*). We infiltrated a transgenic leaf with *Pseudomonas syringae* pv. *tomato* DC3000 (*avrRpt2*) strain (*Pst_a2*) and performed in vivo time-lapse imaging of the YFP signal for a total of 40 h using an

automated fluorescence stereomicroscope. This method can be utilized not only for studies on plant immune responses but also for analyses of various developmental events and environmental responses occurring in leaf tissues.

INTRODUCTION:

Plant immune response involves a dynamic transcriptional reprogramming regulated by multiple transcription factors as well as phytohormones¹. The accumulation of transcriptome data provides opportunities for collecting information on the plant immune system: for example, the network structure of signaling cascades². However, our knowledge of the spatial and temporal dynamism of plant immunity still remains limited³⁻⁵.

In previous studies, spatiotemporal regulation of defense-related gene expression has been mostly analyzed using in situ hybridization and a β -glucuronidase (GUS) reporter assay⁶⁻⁸. These methods enable us to visualize the transcriptional activation of various genes of interest in situ. However, these procedures require chemical fixation of specimens, and thus result in the loss of all temporal information. Biological events, such as immunity, progress over time. The use of luciferase as a reporter has enabled the capture of temporal dynamics of the promoter of interest³. However, luciferase-based assay requires an expensive substrate and highly sensitive detectors. To increase our understanding of the spatiotemporal aspects of plant immune response using a simple procedure, we generated transgenic *Arabidopsis thaliana* plants expressing the *yellow fluorescent protein* (YFP) gene fused to the nuclear localization signal (YFP-NLS) under the control of the promoter of the defense-related marker gene, *Pathogenesis-Related 1* (*PR1*)⁹. We used chlorophyll autofluorescence, a marker of living cells, to capture the process of programmed cell death (PCD), which often occurs during effector-triggered immunity (ETI), a form of plant immunity induced by specific pathogen infection^{9,10}. Monitoring the temporal dynamics of fluorescence signal intensity in freely moving objects, such as living *Arabidopsis* leaves, requires a complex image processing software either built in-house or available commercially. Alternatively, preventing specimens from moving is a simple method to solve the issue. Here, we developed a versatile and simple method for mounting living leaves of a transgenic *Arabidopsis* plant for long-term observation under an automated fluorescence stereomicroscope. The method allows us to capture the promoter dynamics within soil-grown intact plant leaves over a few days.

PROTOCOL:

NOTE: It is important to prevent sleep movement of living leaf samples during time-lapse imaging. To minimize mechanical stress on leaves, gentle fixation of leaves is necessary. Only adequately prepared leaf samples produce time-lapse images suitable for various image analyses. A protocol using transgenic *Arabidopsis* plants expressing YFP-NLS fusion under the control of *PR1* gene promoter (pPR1-YFP-NLS plants) and *Pseudomonas syringae* pv. *tomato* DC3000 (*avrRpt2*) strain (*Pst_a2*) is described below as an example.

1. Preparation of plants and pathogens

1.1 Fill a plastic cell plug tray (**Table of Materials**) with autoclaved soil.

1.2 Sow one transgenic *Arabidopsis* seed per cell (**Figure 1A**).

1.3 Transfer the tray to a growth room maintained at 23 °C and grow the plants under continuous white light for 2–3 weeks.

1.4 Two days prior to pathogen inoculation, streak *Pseudomonas syringae* pv. *tomato* DC3000 *avrRpt2* strain (*Pst_α2*) from a glycerol stock onto NYG medium (5 g/L peptone, 3 g/L yeast extract, 20 mL/L glycerol, 15 g/L bacteriological agar, pH 7.0) containing 100 mg/L rifampicin and 50 mg/L kanamycin and incubate at 28 °C for 48 h.

1.5 Harvest the bacterial cells that appear on the surface of the medium using plastic tips, transfer them to a plastic tube containing 10 mM MgCl₂, and resuspend. Measure the optical density (OD) of the solution at 600 nm (OD₆₀₀). Adjust the final cell concentration of bacterial cells to 10⁸ colony formation units (CFU)/mL, which normally corresponds to OD₆₀₀ = 0.2¹¹.

2. Pathogen inoculation

2.1 Carefully cut out a cell plug containing a 2-3-week-old plant without damaging the plant. Set the cell in an empty cell plug tray (2 x 2 cells are sufficient) to maintain a good balance (**Figure 1B**).

2.2 Select a visibly healthy leaf for inoculation. Generally, the third, fourth, and fifth leaves (#3, #4, and #5, respectively, in **Figure 1C**) from the bottom of the plant are easy to handle. Use leaves at the same position in a set of experiments for better reproducibility. Water the soil holding the plant before inoculation for long-term time-lapse imaging.

2.3 Optionally, in the case of analyzing stress-responsive promoters such as *pPR1*, to ensure that plants are not naturally stressed, examine the leaves under a fluorescence stereomicroscope prior to pathogen inoculation to verify the absence of YFP signal. Exclude leaves showing YFP signal from the experiment.

2.4 Wear disposable latex gloves before infiltration to avoid direct contact with the pathogen. Using a 1 mL needleless plastic syringe, carefully infiltrate the abaxial side of the leaf with the bacterial suspension (10⁸ CFU/mL)¹¹ (**Figure 1D**). Inoculation of a small portion on one-half of the leaf enables a good visualization of *pPR1* activity; the infiltrated area becomes visible as darker green in color compared with the remaining leaf. Be extremely careful not to cause any mechanical damage to the leaf during infiltration.

NOTE: Make sure that all the intercellular spaces in the infiltrated area are completely (vertically) fulfilled with the pathogen suspension; otherwise, the PCD domain will be difficult to visualize under the fluorescent stereomicroscope. This can be simply confirmed by completion of dark greening in the infiltrated area.

2.5 Absorb the excess of bacterial suspension from the area surrounding the infiltrated section of the infiltrated leaf with a soft paper towel.

3. Mounting the inoculated leaf

3.1 Immediately after inoculation, fix a glass slide on the plastic tray using surgical tape (**Table of Materials**) such that the infiltrated leaf is located at the center of the glass slide. Ensure that the inoculated leaf blade is completely fitted within the glass slide (**Figure 2A**).

3.2 Prepare double-layered plastic tape (in the case of 0.2 mm thick tape, see **Table of Materials**) and cut it into two pieces (**Figure 2B**; pieces 1 and 2) to fit the spaces along the petiole of the infiltrated leaf. Arrange the length of these two pieces, indicated with a double-headed arrow in **Figure 2B**, to fit into the length of the double-headed arrow shown in **Figure 2A**.

NOTE: Cutting out a corner from each of the two pieces helps avoid damage to the leaf blade (**Figure 2B**, arrowheads; also see step 3.4 below). Any kind of plastic tape with similar thickness is suitable for making a bridge over the petiole. The stiffness of plastic tape is important for easy handling during the procedure described below.

3.3 Using a pair of fine tweezers, stick tape pieces 1 and 2 on either side of the petiole such that the cut corners of each piece align with the base of the leaf blade (**Figure 2C**). Ensure that the tape pieces do not touch the petiole or leaf blade.

NOTE: These double-layered plastic tape pieces at the base of the leaf blade act as spacers and prevent physical stress on the petiole during mounting.

3.4 Prepare an additional piece of double-layered plastic tape (**Figure 2B**, piece 3) to fit the size of the double-headed arrow in **Figure 2B** and stick it on top of the tape pieces 1 and 2 to form a bridge over the petiole (**Figure 2D,E**). Be extremely careful not to catch the petiole and leaf blade directly between the tape pieces at positions indicated with arrows in **Figure 2D,E**.

3.5 Gently stick a small piece of surgical tape (**Figure 2F**, piece 4) on the glass slide above the tip of the leaf blade so that the leaf blade is fixed very softly on the glass slide. **Only** firmly press down the part of surgical tape directly touching the glass slide (**Figure 2F**, area outlined with a dashed red line), **not** the other part overlying the leaf.

3.6 Gently stick another small piece of surgical tape (**Figure 2G**, piece 5) at the border of the petiole and plastic tape pieces (1, 2, and 3) so that the petiole is very softly fixed onto both the glass slide and plastic tape pieces. **Only** firmly attach the part of surgical tape directly touching the glass slide to the glass slide and plastic tape pieces (**Figure 2G**, area outlined with a dashed red line), **not** the other part overlying the petiole.

3.7 Prevent neighboring leaves from moving into the field of view of the microscope using 200 μ L pipette tips (**Figure 2H**). Insert the pipette tips in the soil to gently hold the neighboring leaves away from the infiltrated leaf. Be careful not to insert the tips too deep in the soil to avoid possible root damage.

NOTE: The prepared plant is now ready for fluorescence stereomicroscope imaging.

4. Microscopic time-lapse observation

4.1 Turn on the fluorescent stereomicroscope.

NOTE: Here, an automated stereomicroscope equipped with a highly sensitive 1.4 megapixel monochrome digital camera in 12-bit mode is used (**Table of Materials**). The microscope should be placed in a dark room fitted with an air-conditioning unit or in a dark cabinet with adequate ventilation to maintain the room temperature at 23 °C during time-lapse imaging.

4.2 Set the plant in the space above under the objective lens of the stereomicroscope for imaging.

4.3 Set up the parameters for time-lapse imaging (see examples in **Table 1**). Make sure to program steps for light exposure during the interval period of time-lapse imaging since light has a major impact on plant immunity¹².

4.3.1 Use the conventional YFP filter (excitation 500-520 nm; emission 540-580 nm) to visualize the YFP signal.

4.3.2 Use the Texas Red (TXR) filter (excitation 540-580 nm; emission 610 nm long pass) to visualize chlorophyll autofluorescence so that the PCD domain is visible as a dark area (no autofluorescence) surrounded by YFP-positive cell layers⁹ (**Figure 3A**).

4.3.3 Use the conventional epi-bright field setup for additional light exposure steps.

NOTE: Before the experiment, measure the power of epi-bright light source and adjust it to the level of own plant growth condition.

4.4 Run the time-lapse imaging program. For long-term observation over several days, consider watering the plant appropriately, for example, during the light exposure steps.

4.5 After image acquisition, omit extra channels used for light exposure in the intervals (corresponding to channels 3–8 in **Table 1**) from the data set. Analyze data with various methods, such as region-of-interest (ROI) analysis, using different image analysis software such as Fiji⁹.

REPRESENTATIVE RESULTS:

Here, we used *Pst_a2*-induced ETI as an example for time-lapse imaging. Time-lapse data were obtained as a series of images, a few of which are shown in **Figure 3B**, and as a time-lapse movie (**Supplemental Movie 1**)⁹. In successful experiments using pPR1-YFP-NLS during *Pst_a2*-induced ETI, transient activation of *pPR1* was observed, as evident from YFP expressing foci, in several layers of cells surrounding the PCD domain (**Figure 3B**)⁹. The activation of *pPR1* in cells surrounding the PCD domain usually starts at approximately 5 hours post inoculation (hpi), peaks at approximately 12 hpi, and lasts up to 40 hpi (**Figure 3B**)⁹. Since images were acquired using an epi-fluorescent system, the YFP signals obtained here were generated from several adaxial cell layers, including epidermal as well as upper mesophyll cells.

FIGURE AND TABLE LEGENDS:

Figure 1: Method used for infiltration of bacterial pathogen into the *Arabidopsis thaliana* leaf. (A) Two- to three-week-old *Arabidopsis* plants were grown in a cell plug tray. (B) One-cell plug containing the selected plant to be used for inoculation and observation was cut out and placed into the empty cell plug tray to maintain balance. (C) The third, fourth, and fifth leaves (#3, #4, and #5, respectively) are suitable for image analysis. (D) Infiltration of the pathogen suspension into a selected leaf using a needleless syringe. The infiltrated area can be recognized based on its darker green color than the remaining leaf.

Figure 2: Method used for mounting the infiltrated *Arabidopsis* leaf for time-lapse imaging. (A) Photograph of the *Arabidopsis* plant with a glass slide fixed under the inoculated leaf. The infiltrated leaf was positioned at the center of the glass slide. The double-headed arrow indicates the length of the plastic tape spacers. (B) Preparation of plastic tape spacers and bridge. Double-layered plastic tape was cut into two pieces (1 and 2) for the spacers, and another piece (3, outlined with a dashed red line) was cut to prepare a bridge. The lengths of double-headed arrows are almost identical to the length of the double-headed arrow in (A). One of the four corners of pieces 1 and 2, indicated with arrows, were cut. (C) Two pieces of double-layered plastic tape (numbered as 1 and 2) were carefully pasted onto the slide glass along the petiole using a pair of fine tweezers, without making direct contact with the petiole and leaf blade. (D) An additional piece of double-layered plastic tape (numbered as 3), which was prepared from (B), was placed on both basal spacers (1 and 2) to form a bridge over the petiole, while ensuring not to catch the petiole between tapes 1 and 2 at positions indicated with arrows. (E) Photograph showing the taped petiole. It is important not to catch plant tissue directly between the plastic tape pieces at positions indicated with arrows. (F) A small piece of surgical tape (numbered as 4) was pasted gently on the glass slide around the tip of the leaf blade. Only the area outlined by the dashed red line was pressed firmly onto the glass slide. (G) Another small piece of surgical tape (numbered as 5) was gently pasted at the border of the petiole and plastic tape pieces. Only the area outlined by the dashed red line was pressed for fixing the petiole softly on the slide glass and plastic tape pieces. (H) Two disposable pipette tips were used to prevent neighboring leaves from moving into the field of view of the stereomicroscope. The pipette tips were inserted directly into the soil at appropriate positions.

Figure 3: Representative results using the *Arabidopsis* leaf mounting method. (A) Fluorescent stereomicroscopic images of a transgenic *Arabidopsis* leaf (pPR1-YFP-NLS plant). A portion of the

leaf was infiltrated with *Pst_a2* (10^8 CFU/mL) on its abaxial surface, and images were captured at 22 hours post inoculation (hpi). Nuclei in which the *pPR1* promoter was activated were detected using the YFP filter, and programmed cell death (PCD) was detected based on the loss of chlorophyll autofluorescence using the Texas Red (TXR) filter. Scale bar = 2.5 mm. (B) A few time-lapse images selected from a collection of 800 images obtained using the protocol described here. These data provide an *in vivo* overview of the spatiotemporal dynamics of *pPR1* activity for 40 hpi. Merged images of YFP and TXR images are shown. Scale bar = 2.5 mm. (C) Mock infiltration of a transgenic leaf (*pPR1*-YFP-NLS plant). In mock infiltration, 10 mM $MgCl_2$ was infiltrated into the abaxial side of the leaf, followed by time-lapse imaging. Mock treatment did not cause ectopic *pPR1* activity and did not interfere with chlorophyll autofluorescence at 13 hpi. An arrow indicates the position of mock infiltration. Scale bar = 2.5 mm. These images were modified from a previous study⁹.

Table 1: Time-lapse imaging program used in this study.

Supplemental Movie 1: Time-lapse movie showing the spatiotemporal dynamics of *pPR1* activation in a transgenic *Arabidopsis* leaf following effector-triggered immunity (ETI) induced by *Pst_a2* inoculation. A portion of the abaxial side of a transgenic leaf carrying the *pPR1*-YFP-NLS construct was infiltrated with *Pst_a2* (10^8 CFU/mL). Images were acquired at 3-min intervals for a total of 40 h. The time stamp shown is in the format dd:hh:mm:ss.sss. This movie was modified from a previous study⁹.

DISCUSSION:

Here, we report a simple method to mount a living *Arabidopsis* leaf expressing a fluorescent reporter gene under the control of a promoter of interest for long-term observation using an automated fluorescent stereomicroscope. Time-lapse imaging of a fluorescent reporter has been frequently performed in root tissues; however, only a few similar studies have been conducted in leaf tissues. This is most likely because leaves are able to freely move in space, whereas roots are often buried and fixed in solid agar medium.

In this report, we focused on the spatiotemporal dynamics of *pPR1* activity during ETI induced by *Pst_a2*. In addition to the gentle fixation of the leaf detailed above, it is important to clearly visualize the spatiotemporal dynamics of cellular events such as promoter activation and PCD. If the distinction between cells showing *pPR1* activity and PCD is not sharp, make sure that all of the intercellular spaces in the infiltrated area are completely filled with the pathogen suspension (see step 2.4). This is critical when using wide-field fluorescence stereomicroscopes since these microscopes capture all detectable signals along the same vertical position of the specimen. Chlorophyll autofluorescence from surviving cells above or beneath the cells in the PCD domain easily masks the dead cells exhibiting no autofluorescence. This is also true for YFP signal.

Conditions for time-lapse imaging need to be established carefully through several preliminary experiments under different experimental conditions. Parameters for time-lapse imaging depend on several factors such as the microscopic system, transgenic plants, and pathogens. To obtain these parameters, we first analyzed various exposure times for YFP signal intensity in the

infiltrated leaf at 7 hpi, which almost coincides with the initial activation of *pPR1*. A 5 s exposure was determined as appropriate for capturing YFP signal with the stereomicroscope used in this study. A similar test was performed for imaging chlorophyll autofluorescence. Exposure of the specimen to light between 3 min intervals was programmed into the time-lapse imaging program as normal bright field imaging with maximum exposure time. Our system (**Table of Materials**) allowed us to have 2.5 min in addition to YFP, TXR, and bright field imaging. This constraint was the primary reason for choosing a 3 min interval. Next, we confirmed that this time-lapse condition caused no apparent damage to the plant samples, and did not induce ectopic light stress-related activation of *pPR1* (**Figure 3B,C**). This led to the development of the program used in this study. Thus, 3-min intervals of fluorescence imaging were deemed sufficient for capturing *pPR1* dynamics during *Pst_a2*-mediated ETI⁹.

Promoter-reporter constructs, especially with the fluorescent reporter fused to the NLS, have been utilized by many groups, and are easily available from the research community; we used the construct published by Kubo et al.¹³. Thus, the protocol described here can be used in any plant biology study examining leaf tissues, if appropriate transgenic plants are available. Our simple and easy protocol provides a great opportunity for researchers who are keen to analyze the spatiotemporal dynamics of any biological event occurring in leaves, such as immune response. It is plausible that our method using tape pieces induces a slight physical stress on the specimens. However, this issue can be controlled by including appropriate positive and negative controls, such as mock treatments, in the experiments (**Figure 3C**). The experimental conditions can be further modified and optimized by analyzing these controls under different conditions.

In recent years, rapid development of imaging instruments and techniques has stimulated the interest of researchers in the complex spatiotemporal aspects of biological events. In any imaging analysis, appropriate mounting and fixing of specimens are among the most important issues. The simple and versatile method of mounting living *Arabidopsis* leaves developed in this study can be applied and optimized for various imaging experiments.

ACKNOWLEDGMENTS:

This work was supported by the Japan Science and Technology Agency [PRESTO117665 to S.B., ERATOJPMJER1502 to N.N.] and by the Japan Society for the Promotion of Science (Grants-in-Aid for Research Activity Start-up [22880008 to S.B.] and for Young Scientists (B) [23780040 to S.B.]). We thank A. Senzaki, Y. Suzuki, Y. Sugisawa and E. Betsuyaku for excellent technical assistance, J. Parker for providing the *Pst_a2* strain, and T. Demura for providing the pBGYN vector.

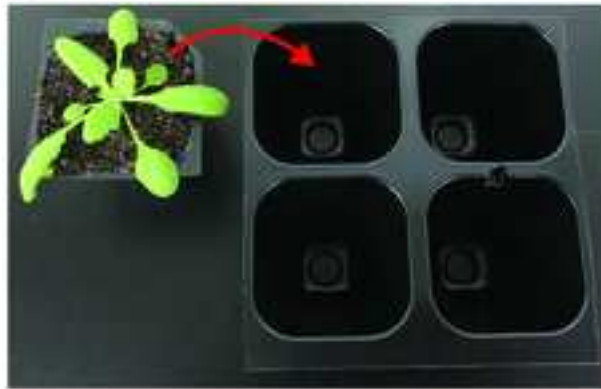
DISCLOSURES:

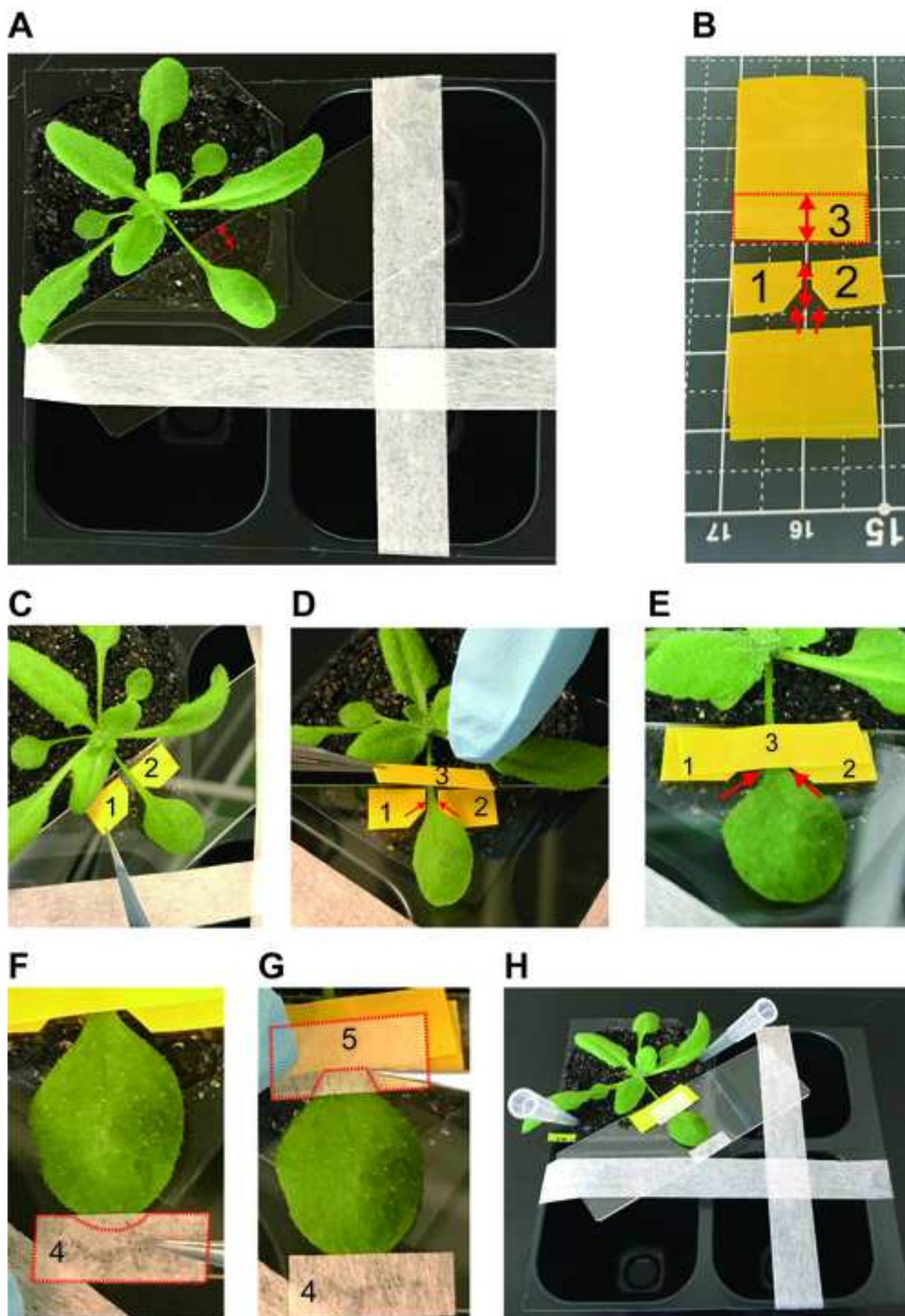
The authors have nothing to disclose.

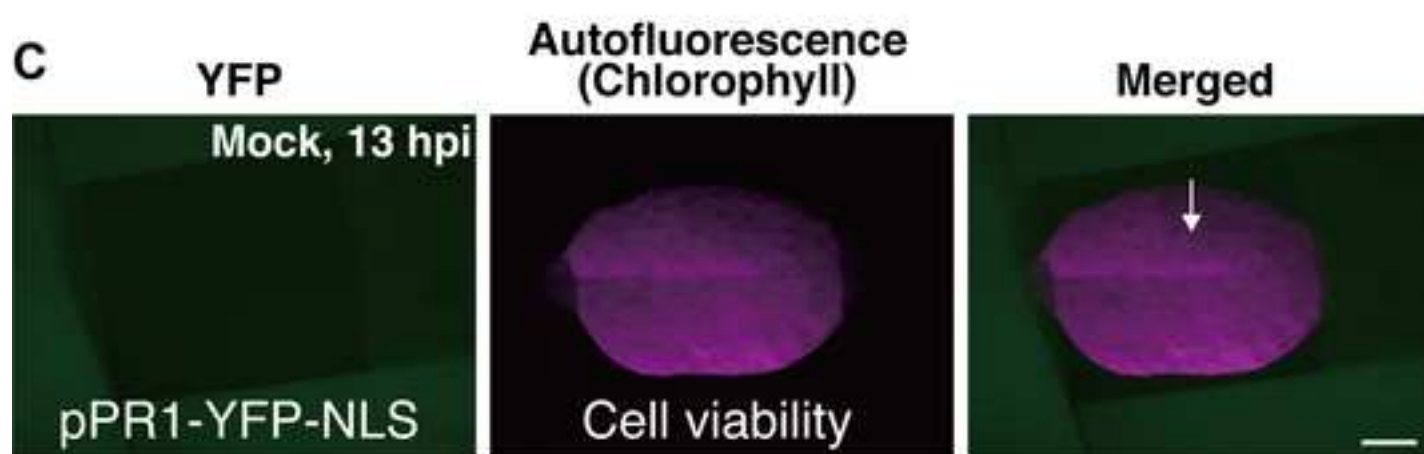
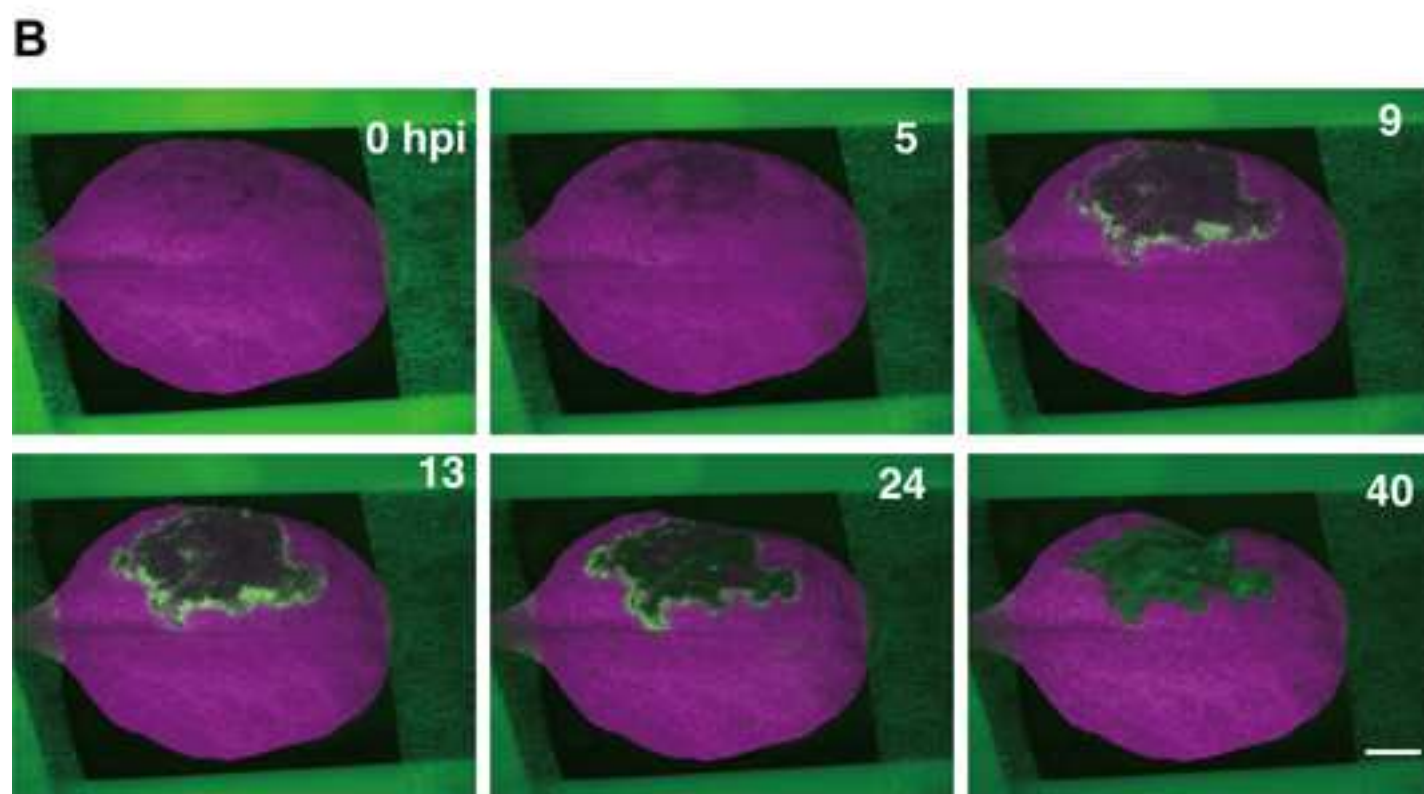
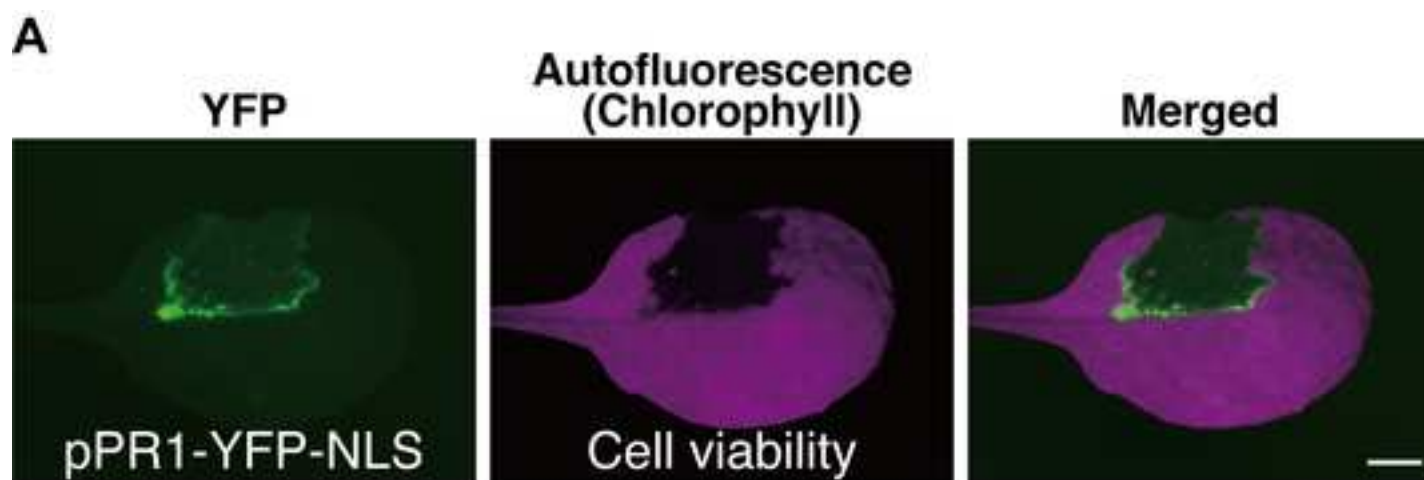
REFERENCES

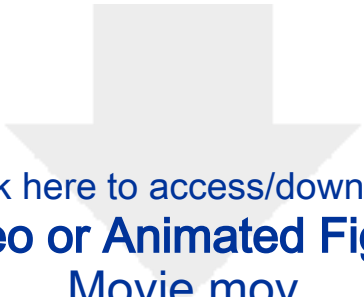
1. Tsuda, K., Somssich, I. E. Transcriptional networks in plant immunity. *New Phytologist*. **206** (3), 932–947, doi:10.1111/nph.13286 (2015).
2. Mine, A., Sato, M., Tsuda, K. Toward a systems understanding of plant–microbe interactions. *Frontiers in Plant Science*. **5**, doi:10.3389/fpls.2014.00423 (2014).

3. Murray, S. L., Thomson, C., Chini, A., Read, N. D., Loake, G. J. Characterization of a novel, defense-related Arabidopsis mutant, cir1, isolated by luciferase imaging. *Molecular Plant-Microbe Interactions*. **15** (6), 557–566, doi:10.1094/MPMI.2002.15.6.557 (2002).
4. Spoel, S. H., Johnson, J. S., Dong, X. Regulation of tradeoffs between plant defenses against pathogens with different lifestyles. *Proceedings of the National Academy of Sciences of the United States of America*. **104** (47), 18842–18847, doi:10.1073/pnas.0708139104 (2007).
5. Asai, S., Shirasu, K. Plant cells under siege: plant immune system versus pathogen effectors. *Current Opinion in Plant Biology*. **28**, 1–8, doi:10.1016/j.pbi.2015.08.008 (2015).
6. Schmelzer, E., Kruger-Lebus, S., Hahlbrock, K. Temporal and Spatial Patterns of Gene Expression around Sites of Attempted Fungal Infection in Parsley Leaves. *The Plant Cell*. **1** (10), 993–1001, doi:10.1105/tpc.1.10.993 (1989).
7. Ohshima, M., Itoh, H., Matsuoka, M., Murakami, T., Ohashi, Y. Analysis of stress-induced or salicylic acid-induced expression of the pathogenesis-related 1a protein gene in transgenic tobacco. *The Plant Cell*. **2** (2), 95–106, doi:10.1105/tpc.2.2.95 (1990).
8. Rushton, P. J., Reinstädler, A., Lipka, V., Lippok, B., Somssich, I. E. Synthetic plant promoters containing defined regulatory elements provide novel insights into pathogen- and wound-induced signaling. *The Plant Cell*. **14** (4), 749–762 (2002).
9. Betsuyaku, S. et al. Salicylic Acid and Jasmonic Acid Pathways are Activated in Spatially Different Domains Around the Infection Site During Effector-Triggered Immunity in Arabidopsis thaliana. *Plant & Cell Physiology*. **59** (1), 8–16, doi:10.1093/pcp/pcx181 (2018).
10. Dodds, P. N., Rathjen, J. P. Plant immunity: towards an integrated view of plant-pathogen interactions. *Nature Reviews Genetics*. **11** (8), 539–548, doi:10.1038/nrg2812 (2010).
11. Katagiri, F., Thilmony, R. The Arabidopsis thaliana-Pseudomonas syringae interaction. *Arabidopsis Book* (2002).
12. Zeier, J., Pink, B., Mueller, M. J., Berger, S. Light conditions influence specific defence responses in incompatible plant-pathogen interactions: uncoupling systemic resistance from salicylic acid and PR-1 accumulation. *Planta*. **219** (4), 673–683, doi:10.1007/s00425-004-1272-z (2004).
13. Kubo, M. et al. Transcription switches for protoxylem and metaxylem vessel formation. *Genes & Development*. **19** (16), 1855–1860, doi:10.1101/gad.1331305 (2005).

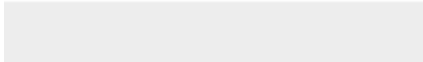

A**B****C****D**







Click here to access/download
Video or Animated Figure
Movie.mov



Channel ID	Filter set	Duration of exposure	Usage
Channnel 1	YFP	5.0 s	YFP images
Channnel 2	TXR	10.0 ms	Chlorophyll autofluorescence images
Channnel 3	Bright Field	30.40 s	Interval light exposure
Channnel 4	Bright Field	30.40 s	Interval light exposure
Channnel 5	Bright Field	30.40 s	Interval light exposure
Channnel 6	Bright Field	30.40 s	Interval light exposure
Channnel 7	Bright Field	30.40 s	Interval light exposure
Channnel 8	Bright Field	30.0 ms	Bright field images

Note: A maximum number of eight channels available in the system were used for running the time-lapse imaging program. The program was run at 3 min intervals for a total of 40 h (800 cycles). Maximum intensity of the mercuy lamp (**Table of Materials**) was used to capture live-cell images with YFP and TXR filters.

Name of Material/ Equipment	Company	Catalog Number	Comments/Description
Bacto Agar	BD biosciences	214010	
Bacto Protease Peptone No. 3	BD biosciences	211693	
Bacto Yeast Extract	BD biosciences	212750	
BM2 soil	Berger		
Glycerol	nacalai tesque	17017-35	
Kanamycin sulfate	Wako	113-00343	
Leica M205FA with DFC365FX, LED_MCI and Leica EL6000 (Las X software-regulated)	Leica Microsystems		Yellow fluorescent protein (YFP) and Texas Red (TXR) filters installed
Magnesium Chloride Hexahydrate	Wako	135-00165	
Micro Slide Glass (Size: 76 mm × 26 mm, Thickness: 1.0–1.2 mm)	MATSUNAMI	S1112	
Micropore Surgical Tape (1.25 cm × 9 m)	3M	1530-0	
Needleless 1 ml plastic syringe	Terumo	SS-01T	
Plastic cell plug tray (cell size: 44 mm × 44mm × 44 mm)	Tanaka sangyo, Japan	htray-bk72	Any tray with similar sized cells can be used
Rifampicin	nacalai tesque	30259-81	
Plastic Tape (0.2 mm thick × 19 mm wide × 10 m long)	Yamato	No0200-19-1	Any plastic/vinyl tape with similar thickness can be used



1 Alewife Center #200
Cambridge, MA 02140
tel. 617.945.9051
www.jove.com

ARTICLE AND VIDEO LICENSE AGREEMENT

Title of Article:

A simple and versatile mounting method of living Arabidopsis leaves for intravital time-lapse imaging of the immunity-related promoter-reporter activity

Author(s):

Shigeyuki Betsuyaku, Nobuhiko Nomura and Hiroo Fukuda

Item 1: The Author elects to have the Materials be made available (as described at <http://www.jove.com/publish>) via:

☐

Standard Access

☒

Open Access

Item 2: Please select one of the following items:

☒

The Author is **NOT** a United States government employee.

☐

The Author is a United States government employee and the Materials were prepared in the course of his or her duties as a United States government employee.

☐

The Author is a United States government employee but the Materials were NOT prepared in the course of his or her duties as a United States government employee.

ARTICLE AND VIDEO LICENSE AGREEMENT

1. **Defined Terms.** As used in this Article and Video License Agreement, the following terms shall have the following meanings: “**Agreement**” means this Article and Video License Agreement; “**Article**” means the article specified on the last page of this Agreement, including any associated materials such as texts, figures, tables, artwork, abstracts, or summaries contained therein; “**Author**” means the author who is a signatory to this Agreement; “**Collective Work**” means a work, such as a periodical issue, anthology or encyclopedia, in which the Materials in their entirety in unmodified form, along with a number of other contributions, constituting separate and independent works in themselves, are assembled into a collective whole; “**CRC License**” means the Creative Commons Attribution-Non Commercial-No Derivs 3.0 Unported Agreement, the terms and conditions of which can be found at: <http://creativecommons.org/licenses/by-nc-nd/3.0/legalcode>; “**Derivative Work**” means a work based upon the Materials or upon the Materials and other pre-existing works, such as a translation, musical arrangement, dramatization, fictionalization, motion picture version, sound recording, art reproduction, abridgment, condensation, or any other form in which the Materials may be recast, transformed, or adapted; “**Institution**” means the institution, listed on the last page of this Agreement, by which the Author was employed at the time of the creation of the Materials; “**JoVE**” means MyJoVE Corporation, a Massachusetts corporation and the publisher of The Journal of Visualized Experiments; “**Materials**” means the Article and / or the Video; “**Parties**” means the Author and JoVE; “**Video**” means any video(s) made by the Author, alone or in conjunction with any other parties, or by JoVE or its affiliates or agents, individually or in collaboration with the Author or any other parties, incorporating all or any portion

of the Article, and in which the Author may or may not appear.

2. **Background.** The Author, who is the author of the Article, in order to ensure the dissemination and protection of the Article, desires to have the JoVE publish the Article and create and transmit videos based on the Article. In furtherance of such goals, the Parties desire to memorialize in this Agreement the respective rights of each Party in and to the Article and the Video.

3. **Grant of Rights in Article.** In consideration of JoVE agreeing to publish the Article, the Author hereby grants to JoVE, subject to **Sections 4 and 7** below, the exclusive, royalty-free, perpetual (for the full term of copyright in the Article, including any extensions thereto) license (a) to publish, reproduce, distribute, display and store the Article in all forms, formats and media whether now known or hereafter developed (including without limitation in print, digital and electronic form) throughout the world, (b) to translate the Article into other languages, create adaptations, summaries or extracts of the Article or other Derivative Works (including, without limitation, the Video) or Collective Works based on all or any portion of the Article and exercise all of the rights set forth in (a) above in such translations, adaptations, summaries, extracts, Derivative Works or Collective Works and (c) to license others to do any or all of the above. The foregoing rights may be exercised in all media and formats, whether now known or hereafter devised, and include the right to make such modifications as are technically necessary to exercise the rights in other media and formats. If the “Open Access” box has been checked in **Item 1** above, JoVE and the Author hereby grant to the public all such rights in the Article as provided in, but subject to all limitations and requirements set forth in, the CRC License.

ARTICLE AND VIDEO LICENSE AGREEMENT

4. **Retention of Rights in Article.** Notwithstanding the exclusive license granted to JoVE in **Section 3** above, the Author shall, with respect to the Article, retain the non-exclusive right to use all or part of the Article for the non-commercial purpose of giving lectures, presentations or teaching classes, and to post a copy of the Article on the Institution's website or the Author's personal website, in each case provided that a link to the Article on the JoVE website is provided and notice of JoVE's copyright in the Article is included. All non-copyright intellectual property rights in and to the Article, such as patent rights, shall remain with the Author.

5. **Grant of Rights in Video – Standard Access.** This **Section 5** applies if the "Standard Access" box has been checked in **Item 1** above or if no box has been checked in **Item 1** above. In consideration of JoVE agreeing to produce, display or otherwise assist with the Video, the Author hereby acknowledges and agrees that, Subject to **Section 7** below, JoVE is and shall be the sole and exclusive owner of all rights of any nature, including, without limitation, all copyrights, in and to the Video. To the extent that, by law, the Author is deemed, now or at any time in the future, to have any rights of any nature in or to the Video, the Author hereby disclaims all such rights and transfers all such rights to JoVE.

6. **Grant of Rights in Video – Open Access.** This **Section 6** applies only if the "Open Access" box has been checked in **Item 1** above. In consideration of JoVE agreeing to produce, display or otherwise assist with the Video, the Author hereby grants to JoVE, subject to **Section 7** below, the exclusive, royalty-free, perpetual (for the full term of copyright in the Article, including any extensions thereto) license (a) to publish, reproduce, distribute, display and store the Video in all forms, formats and media whether now known or hereafter developed (including without limitation in print, digital and electronic form) throughout the world, (b) to translate the Video into other languages, create adaptations, summaries or extracts of the Video or other Derivative Works or Collective Works based on all or any portion of the Video and exercise all of the rights set forth in (a) above in such translations, adaptations, summaries, extracts, Derivative Works or Collective Works and (c) to license others to do any or all of the above. The foregoing rights may be exercised in all media and formats, whether now known or hereafter devised, and include the right to make such modifications as are technically necessary to exercise the rights in other media and formats. For any Video to which this **Section 6** is applicable, JoVE and the Author hereby grant to the public all such rights in the Video as provided in, but subject to all limitations and requirements set forth in, the CRC License.

7. **Government Employees.** If the Author is a United States government employee and the Article was prepared in the course of his or her duties as a United States government employee, as indicated in **Item 2** above, and any of the licenses or grants granted by the Author hereunder exceed the scope of the 17 U.S.C. 403, then the rights granted hereunder shall be limited to the maximum

rights permitted under such statute. In such case, all provisions contained herein that are not in conflict with such statute shall remain in full force and effect, and all provisions contained herein that do so conflict shall be deemed to be amended so as to provide to JoVE the maximum rights permissible within such statute.

8. **Protection of the Work.** The Author(s) authorize JoVE to take steps in the Author(s) name and on their behalf if JoVE believes some third party could be infringing or might infringe the copyright of either the Author's Article and/or Video.

9. **Likeness, Privacy, Personality.** The Author hereby grants JoVE the right to use the Author's name, voice, likeness, picture, photograph, image, biography and performance in any way, commercial or otherwise, in connection with the Materials and the sale, promotion and distribution thereof. The Author hereby waives any and all rights he or she may have, relating to his or her appearance in the Video or otherwise relating to the Materials, under all applicable privacy, likeness, personality or similar laws.

10. **Author Warranties.** The Author represents and warrants that the Article is original, that it has not been published, that the copyright interest is owned by the Author (or, if more than one author is listed at the beginning of this Agreement, by such authors collectively) and has not been assigned, licensed, or otherwise transferred to any other party. The Author represents and warrants that the author(s) listed at the top of this Agreement are the only authors of the Materials. If more than one author is listed at the top of this Agreement and if any such author has not entered into a separate Article and Video License Agreement with JoVE relating to the Materials, the Author represents and warrants that the Author has been authorized by each of the other such authors to execute this Agreement on his or her behalf and to bind him or her with respect to the terms of this Agreement as if each of them had been a party hereto as an Author. The Author warrants that the use, reproduction, distribution, public or private performance or display, and/or modification of all or any portion of the Materials does not and will not violate, infringe and/or misappropriate the patent, trademark, intellectual property or other rights of any third party. The Author represents and warrants that it has and will continue to comply with all government, institutional and other regulations, including, without limitation all institutional, laboratory, hospital, ethical, human and animal treatment, privacy, and all other rules, regulations, laws, procedures or guidelines, applicable to the Materials, and that all research involving human and animal subjects has been approved by the Author's relevant institutional review board.

11. **JoVE Discretion.** If the Author requests the assistance of JoVE in producing the Video in the Author's facility, the Author shall ensure that the presence of JoVE employees, agents or independent contractors is in accordance with the relevant regulations of the Author's institution. If more than one author is listed at the beginning of this Agreement, JoVE may, in its sole

ARTICLE AND VIDEO LICENSE AGREEMENT

discretion, elect not take any action with respect to the Article until such time as it has received complete, executed Article and Video License Agreements from each such author. JoVE reserves the right, in its absolute and sole discretion and without giving any reason therefore, to accept or decline any work submitted to JoVE. JoVE and its employees, agents and independent contractors shall have full, unfettered access to the facilities of the Author or of the Author's institution as necessary to make the Video, whether actually published or not. JoVE has sole discretion as to the method of making and publishing the Materials, including, without limitation, to all decisions regarding editing, lighting, filming, timing of publication, if any, length, quality, content and the like.

12. **Indemnification.** The Author agrees to indemnify JoVE and/or its successors and assigns from and against any and all claims, costs, and expenses, including attorney's fees, arising out of any breach of any warranty or other representations contained herein. The Author further agrees to indemnify and hold harmless JoVE from and against any and all claims, costs, and expenses, including attorney's fees, resulting from the breach by the Author of any representation or warranty contained herein or from allegations or instances of violation of intellectual property rights, damage to the Author's or the Author's institution's facilities, fraud, libel, defamation, research, equipment, experiments, property damage, personal injury, violations of institutional, laboratory, hospital, ethical, human and animal treatment, privacy or other rules, regulations, laws, procedures or guidelines, liabilities and other losses or damages related in any way to the submission of work to JoVE, making of videos by JoVE, or publication in JoVE or elsewhere by JoVE. The Author shall be responsible for, and shall hold JoVE harmless from, damages caused by lack of sterilization, lack of cleanliness or by contamination due to


the making of a video by JoVE its employees, agents or independent contractors. All sterilization, cleanliness or decontamination procedures shall be solely the responsibility of the Author and shall be undertaken at the Author's expense. All indemnifications provided herein shall include JoVE's attorney's fees and costs related to said losses or damages. Such indemnification and holding harmless shall include such losses or damages incurred by, or in connection with, acts or omissions of JoVE, its employees, agents or independent contractors.

13. **Fees.** To cover the cost incurred for publication, JoVE must receive payment before production and publication the Materials. Payment is due in 21 days of invoice. Should the Materials not be published due to an editorial or production decision, these funds will be returned to the Author. Withdrawal by the Author of any submitted Materials after final peer review approval will result in a US\$1,200 fee to cover pre-production expenses incurred by JoVE. If payment is not received by the completion of filming, production and publication of the Materials will be suspended until payment is received.

14. **Transfer, Governing Law.** This Agreement may be assigned by JoVE and shall inure to the benefits of any of JoVE's successors and assignees. This Agreement shall be governed and construed by the internal laws of the Commonwealth of Massachusetts without giving effect to any conflict of law provision thereunder. This Agreement may be executed in counterparts, each of which shall be deemed an original, but all of which together shall be deemed to be one and the same agreement. A signed copy of this Agreement delivered by facsimile, e-mail or other means of electronic transmission shall be deemed to have the same legal effect as delivery of an original signed copy of this Agreement.

A signed copy of this document must be sent with all new submissions. Only one Agreement is required per submission.

CORRESPONDING AUTHOR

Name:	Shigeyuki Betsuyaku	
Department:	Faculty of Life and Environmental Sciences	
Institution:	University of Tsukuba	
Title:	Dr	
Signature:		Date: 25th. Sep, 2018

Please submit a **signed** and **dated** copy of this license by one of the following three methods:

1. Upload an electronic version on the JoVE submission site
2. Fax the document to +1.866.381.2236
3. Mail the document to JoVE / Attn: JoVE Editorial / 1 Alewife Center #200 / Cambridge, MA 02140

*University of Tsukuba*Faculty of Life and Environmental Sciences
University of TsukubaNovember 22nd, 2018

Dear Editors of JOURNAL of VISUALIZED EXPERIMENTS (JoVE),

We thank you for giving us a chance to revise our manuscript JoVE59147 and for all the valuable comments from the reviewers. Following the comments by the reviewers, we extensively revised the manuscript including the quality of the language. Herewith, we are submitting our revised manuscript entitled, “A simple and versatile mounting method of living *Arabidopsis* leaves for intravital time-lapse imaging”.

Our re-submission includes:

- 3 figures,
- 2 tables,
- 1 movie

Followings are the list of our responses to the editorial and peer review comments.

Editorial comments:

Changes to be made by the author(s) regarding the manuscript:

1. Please take this opportunity to thoroughly proofread the manuscript to ensure that there are no spelling or grammar issues.

We proofread the manuscript, and then sent it for proof-reading company.

2. Please provide an email address for each author.

We added e-mail addresses for all the authors.

3. JoVE cannot publish manuscripts containing commercial language. This includes trademark symbols (™), registered symbols (®), and company names before an instrument or reagent. Please remove all commercial language from your manuscript and use generic terms instead. All commercial products should be sufficiently referenced in the Table of Materials and Reagents. You may use the generic term followed by “(see table of materials)” to draw the readers’ attention to specific commercial names. Examples of

commercial sounding language in your manuscript are: Tanaka sangyo, Berger, Terumo, 3M, Micropore, Yamato, Leica, etc.

We made changes accordingly.

4. Please revise the protocol text to avoid the use of any personal pronouns (e.g., "we", "you", "our" etc.).

We revised the protocol text accordingly.

5. Please revise the protocol to contain only action items that direct the reader to do something (e.g., "Do this," "Ensure that," etc.). The actions should be described in the imperative tense in complete sentences wherever possible. Avoid usage of phrases such as "could be," "should be," and "would be" throughout the Protocol. Any text that cannot be written in the imperative tense may be added as a "Note." Please include all safety procedures and use of hoods, etc. However, notes should be used sparingly and actions should be described in the imperative tense wherever possible.

We revised the protocol text accordingly. Some parts of "Note" in the previous version are now integrated into "Discussion" part.

6. In the JoVE Protocol format, "Notes" should be concise and used sparingly. They should only be used to provide extraneous details, optional steps, or recommendations that are not critical to a step. Any text that provides details about how to perform a particular step should either be included in the step itself or added as a sub-step. Please consider moving some of the notes about the protocol to the discussion section.

We revised the protocol text accordingly.

7. Please revise the Protocol steps so that individual steps contain only 2-3 actions per step and a maximum of 4 sentences per step. Use sub-steps as necessary.

We revised the protocol text accordingly.

8. Please include single-line spaces between all paragraphs, headings, steps, etc.

We revised the protocol text accordingly.

9. After you have made all the recommended changes to your protocol (listed above), please highlight 2.75 pages or less of the Protocol (including headings and spacing) that identifies the essential steps of the protocol for the video, i.e., the steps that should be visualized to tell the most cohesive story of the Protocol.

We did it.

10. Please highlight complete sentences (not parts of sentences). Please ensure that the highlighted part of the step includes at least one action that is written in imperative tense.

We did it.

11. Please include all relevant details that are required to perform the step in the highlighting. For example: If step 2.5 is highlighted for filming and the details of how to perform the step are given in steps 2.5.1 and 2.5.2, then the sub-steps where the details are provided must be highlighted.

We did it.

12. Table 1: Please change the time units “sec” to “s”, “mins” to “min”, and “hrs” to “h”.

We made changes accordingly.

13. Movie: Please add a title and a short description of the data presented in the movie in the Figure Legends after the Representative Results.

We added the Figure Legends for the movie.

14. Discussion: As we are a methods journal, please also discuss critical steps within the protocol, any modifications and troubleshooting of the technique, and any limitations of the technique.

We revised “Discussion” part extensively to include the points raised here.

15. Table of Equipment and Materials: Please sort the items in alphabetical order according to the Name of Material/ Equipment.

We did it.

Reviewers' comments:

Reviewer #1:

Manuscript Summary:

The manuscript entitled "A simple and versatile method for mounting Arabidopsis leaves for intravital time-lapse imaging of the immunity-related promoter-reporter activity" describes a method for live imaging of fluorescent markers in leaves, with a goal to gain better understanding of the dynamics of plants' immune responses. This method has value even for researchers outside of the plant immunity field and some of the suggested changes (mostly minor) reflect this opinion. I support publishing this article after addressing the following concerns:

Major Concerns:

The language needs to be improved and some parts re-written for clarification. For example "swinging" should be replaced with "sleep movement circadian response" (Introduction, line 76) or with "moving" (step 2.6, line 136). Another example is the second part of the first paragraph of the Discussion (line 228) where the authors should clearly specify what kind of a method of leaf imaging is lacking and explain why.

We have improved the language by ourselves as well as sent the manuscript for a professional English-editing service. In addition, we changed the words accordingly.

Minor Concerns:

1. The title could be shortened and made more general. For example "'A simple and versatile method for mounting Arabidopsis leaves for intravital time-lapse imaging'".

We thank you for a nice suggestion. We changed the title accordingly.

2. Step 2.1: Add "out" in line 98 after "cut".

We did accordingly.

3. Step 2.2: Explain which side of the leaf is supposed to be infiltrated (abaxial/adaxial). The reference to Figure 1D is out of place. It should be moved at the end of the first sentence in the paragraph.

We clarified as "abaxial" in the text and placed the reference to Figure 1D accordingly.

4. Step 2.4: Add references in the text to the arrows pictured in Figures 1H and 1I. Explain that a bridge formed from a plastic tape is supposed to be placed over the petiole (line 126).

We did accordingly.

5. Step 2.5: Explain that a tip of a leaf blade is fixed on the slide (line 130). Is the last sentence in this paragraph supposed to mean, "Do not fold the tape"?

We did accordingly. The sentence was also rephrased clearly.

6. Step 2.6: Is the last sentence in this paragraph supposed to mean, "Do not fold the tape"?

We rephrased the sentence clearly.

7. Step 3.3: Note needs to be re-written to better explain the preliminary experiment. Abbreviations (e.g., ROI) need to be defined.

We explained more clearly about the preliminary experiment in Discussion part. ROI is now clearly defined in the text.

8. Figure 1 Legend should not repeat the procedure.

Thank you for your suggestion. We changed the legend extensively.

9. Figure 1E: The slide is barely visible.

We changed the figure design. Figure 1 was splitted into two figures. The previous Figure 1E became more visible in the current version.

10. Figure 1F: double-headed arrows are not visible.

We changed the size of arrows now.

11. Figure 1: the resolution is low.

We prepared Figure 1 with a better resolution. If the figure appears to be low resolution in the PDF file, please click the link in the PDF file to download the original figure image.

Reviewer #2:

Manuscript Summary:

The manuscript "A simple and versatile method for mounting Arabidopsis leaves for intravital time-lapse imaging of the immunity-related promoter-reporter activity" by authors Shigeyuki Betsuyaku, Hiroo Fukuda and Nobuhiko Nomura, describes a method for a live-imaging/long-term/time-laps analysis of the whole plant leaf expression pattern of the fluorescently labeled reporter, in this case nuclearly localized YFP applied in the study of a spatiotemporal regulation of an immunity-related promoter of pathogenesis related 1 gene. The manuscript is nicely written and all the steps of the procedure are nicely explained. However, there are several items that should be matter of further improvement or better explanation.

Major Concerns:

The main weakness of the manuscript is that it describes a long term observation of the leaf/plant kept in conditions suitable for fluorescent microscopy, with a bright field light set as the only source of light (if I understood well; if not please explain additionally light conditions during the imaging) in comparison to previous cultivation of the whole plant under constant white light. It would be good to show that this does not impose stress by monitoring eg. chlorophyll fluorescence in mock infiltrated plant (several time points would be sufficient). The method also allows monitoring of the adaxial side of the leaf only. Thus, the described method is more suitable for live-imaging of gene expression which is not sensitive to light conditions and also for adaxially expressed genes.

We thank you for the comment. We measure the power of the epi-white light (LED) of our microscope system and adjust it to the level of our plant growth room. Therefore, our lighting condition of our microscopic system used in this protocol almost mimics our normal plant growth condition, since we use 24 h continuous light condition in our lab. We added a "Note" to explain clearly this point in 4.3.3.

As we published in our previous manuscript (Betsuyaku et al, PCP, 2018), our continuous light exposure condition in our time-lapse imaging does not weaken/activate chlorophyll autofluorescence and does not cause ectopic *pPR1* activation. We incorporate a new figure (Figure 3C) from the previous manuscript into the revised manuscript to show the point.

Minor Concerns:

Even though it is obvious from figure that the infiltration was performed abaxial, it would be good to mention it in the text, for other leaves/species adaxial can be possible as well and it can give different patterns.

Thank you for the comment. We explained clearly by adding the word “abaxial” in the text.

Is there a time delay between 2.2 and 2.3, a time given to leaf to „rest“ from infiltration?

No, there is no delay between 2.2 and 2.3. We added a sentence to explain this point clearly at the beginning of 3.1.

Could a plastic tape Yamato been substitute by any other pressure-sensitive insulating tape or it has some special features?

Yes, any plastic/vinyl tape with a reasonable stiffness can be substituted with the Yamato tape. We explained the point clearly in the text.

Figure 1 - part E requires better resolution (glass is poorly visible); F should be enlarged, so that arrowheads are more obvious.

We changed the figure design. Figure 1 was splitted into two figures. The previous Figure 1 E and F became more visible in the current version. If the figures appear to be low resolution in the PDF file, please click the link in the PDF file to download the original figure images.

Reviewer #3:

Manuscript Summary:

The authors describe a method to reliably monitor a fluorescent reporter gene over an extended period.

Major Concerns:

While it is possible to understand the main points and direction of the manuscript, the authors need to extensively revise the text so that it is written by someone with a higher level of English proficiency. In its current form, the manuscript has are far too many errors to be unambiguous.

We have improved the language by ourselves as well as sent the manuscript for a professional English-editing service.

Minor Concerns:

Figures 1 and 2 are low resolution and some of the important details are lost.

We changed the figure design. Figure 1 was splitted into two figures. The previous Figure 1 E and F

became more visible in the current version. We also improved the resolution of Figures 1 and 2. If the figures appear to be low resolution in the PDF file, please click the link in the PDF file to download the original figure images.

Again, we thank the reviewers for giving us an opportunity to revise our manuscript for possible publication in JOURNAL of VISUALIZED EXPERIMENTS. These comments improve the quality of our manuscript. We believe that the revised manuscript will be widely cited. We hope very much that you will find it suitable for publication in JOURNAL of VISUALIZED EXPERIMENTS.

Sincerely yours,

Shigeyuki Betsuyaku
University of Tsukuba

Information on corresponding author:

Shigeyuki Betsuyaku
Faculty of Life and Environmental Sciences,
University of Tsukuba
1-1-1, Tennodai, Tsukuba, Ibaraki 305-8577, JAPAN
TEL: +81-29-853-4311
e-mail: betsuyaku.shige.ge@u.tsukuba.ac.jp



Home

Account
Info

Help



Title: Salicylic Acid and Jasmonic Acid Pathways are Activated in Spatially Different Domains Around the Infection Site During Effector-Triggered Immunity in *Arabidopsis thaliana*

Author: Betsuyaku, Shigeyuki; Katou, Shinpei

Publication: Plant and Cell Physiology

Publisher: Oxford University Press

Date: 2017-11-21

Copyright © 2017, Oxford University Press

Logged in as:
Shigeyuki Betsuyaku

LOGOUT

Order Completed

Thank you for your order.

This Agreement between Dr. Shigeyuki Betsuyaku ("You") and Oxford University Press ("Oxford University Press") consists of your license details and the terms and conditions provided by Oxford University Press and Copyright Clearance Center.

Your confirmation email will contain your order number for future reference.

[printable details](#)

License Number	4403510964597
License date	Aug 07, 2018
Licensed Content Publisher	Oxford University Press
Licensed Content Publication	Plant and Cell Physiology
Licensed Content Title	Salicylic Acid and Jasmonic Acid Pathways are Activated in Spatially Different Domains Around the Infection Site During Effector-Triggered Immunity in <i>Arabidopsis thaliana</i>
Licensed Content Author	Betsuyaku, Shigeyuki; Katou, Shinpei
Licensed Content Date	Nov 21, 2017
Licensed Content Volume	59
Licensed Content Issue	1
Type of Use	Journal
Requestor type	Author of this OUP content
Pharmaceutical support or sponsorship for this project	No
Format	Electronic
Portion	Figure/table
Number of figures/tables	3
Will you be translating?	No
Circulation/distribution	1000
Title	Time-lapse imaging of immunity-related promoter-reporter activity in Arabidopsis leaves. (tentative)
Author	Shigeyuki Betsuyaku, Nobuhiko Nomura and Hiroo Fukuda (tentative)

Publication	Journal of Visualized Experiments
Publisher	Journal of Visualized Experiments
Expected publication date	Feb 2019
Expected size	4
Portions	Figure 2 (will be re-arranged) Supplementary Figure S2 (will be re-arranged) Supplementary Figure Movie S1 (will be re-formatted)
Requestor Location	Dr. Shigeyuki Betsuyaku 1-1-1 Tennodai Tsukuba, Ibaraki 305-8572 Japan Attn: Dr. Shigeyuki Betsuyaku
Publisher Tax ID	GB125506730
Billing Type	Invoice
Billing address	Dr. Shigeyuki Betsuyaku 1-1-1 Tennodai Tsukuba, Japan 305-8572 Attn: Dr. Shigeyuki Betsuyaku
Total	0 JPY

[ORDER MORE](#)[CLOSE WINDOW](#)

Copyright © 2018 [Copyright Clearance Center, Inc.](#) All Rights Reserved. [Privacy statement.](#) [Terms and Conditions.](#)
Comments? We would like to hear from you. E-mail us at customercare@copyright.com