

Journal of Visualized Experiments

A Conflict Model of Reward-Seeking Behavior in Male Rats

--Manuscript Draft--

Article Type:	Methods Article - JoVE Produced Video
Manuscript Number:	JoVE59141R2
Full Title:	A Conflict Model of Reward-Seeking Behavior in Male Rats
Keywords:	Morphine, Withdrawal, Conflict, Inhibitory control, Sexual reward, Stress
Corresponding Author:	Shaofei Jiang, M.D. University of the Chinese Academy of Sciences Beijing, Beijing CHINA
Corresponding Author's Institution:	University of the Chinese Academy of Sciences
Corresponding Author E-Mail:	jiangsf@psych.ac.cn
Order of Authors:	Shaofei Jiang, M.D. Yue Zhang Xigeng Zheng Haoshuang Luo Zhengkui Liu Yunjing Bai
Additional Information:	
Question	Response
Please indicate whether this article will be Standard Access or Open Access.	Standard Access (US\$2,400)
Please indicate the city, state/province, and country where this article will be filmed . Please do not use abbreviations.	Beijing, Beijing, China

TITLE:

A Conflict Model of Reward-seeking Behavior in Male Rats

AUTHORS AND AFFILIATIONS:

Shaofei Jiang^{1,2,*}, Yue Zhang^{1,2,*}, Xigeng Zheng^{1,2}, Haoshuang Luo^{1,2}, Zhengkui Liu^{1,2}, Yunjing Bai^{1,2}

¹CAS Key Laboratory of Mental Health, Institute of Psychology, Chinese Academy of Sciences, Beijing, China

²Department of Psychology, University of Chinese Academy of Sciences, Beijing, China

*Co-first authors

Corresponding Authors:

Yunjing Bai (baiyj@psych.ac.cn)

Zhengkui Liu (liuzk@psych.ac.cn)

Email Addresses of Co-authors:

Shaofei Jiang (jiangsf@psych.ac.cn)

Xigeng Zheng (zhengxg@psych.ac.cn)

Yue Zhang (zhangy@psych.ac.cn)

Haoshuang Luo (luohs@psych.ac.cn)

KEYWORDS:

morphine, withdrawal, conflict, inhibitory control, sexual reward, stress

SUMMARY:

This conflict model is used to measure the impairment of inhibitory control after exposure to addictive drugs, or other factors that may influence inhibitory control. A sexual stimulus and an aversive obstacle are concurrently presented, thus male rats have to conquer the obstacle to approach the sexual reward.

ABSTRACT:

The present protocol describes a novel conflict task as a model of inhibitory control in rats. In this model, a natural rewarding stimulus (sexual stimulus) that represents a high-value reward, and the aversive stimuli (pins), are concurrently presented. The male rats have to climb or jump over the obstacle full of pins to approach and investigate the sexual partner. If the animal persists in their approaching behavior regardless of the aversive stimuli, it is considered as a maladaptive or risky reward-seeking behavior. The conflict task permits the evaluation of deficit in inhibitory control resulting from exposure to abused drug, such as morphine, or a stressful event.

The main advantage of this model is that it provides a simple and quick way to discover the deficit in inhibitory control after exposure to opiate drugs or other stressful events. In addition to opiates, this behavioral model would also be useful for quickly discovering the inhibitory control deficits induced by other addictive drugs. However, the limitation is that the male rats'

performance may be subject to exercising effects with repeated testing under this conflict task. In the future, one can hope that the individuals with the compulsive phenotype of reward-seeking behavior after exposure to opiates will be identified based on modifying this conflict model.

INTRODUCTION:

Drug addiction is a chronic brain disease which is characterized by impulsive and compulsive drug seeking and taking¹. These key features of addiction have both been hypothesized to result from the impaired ability of inhibitory control^{2,3}, i.e., failing in inhibiting the immediate pursuit of rewarding stimuli and thus developing maladaptive patterns of behavior⁴.

The go/no-go task and stop-signal task are the prototypical tasks used to measure the ability of response inhibition^{2,5}. These two experimental paradigms assess one's ability to suppress actions that are inappropriate, by contrasting infrequent inhibitory responses against an implicit go baseline^{6,7}. The response inhibition displayed in these tasks has been shown to be impaired in cocaine users^{8,9}, opiate addicts¹⁰, and nicotine users¹¹. Another two tasks—reversal learning and multiple choice serial reaction time tasks—also provide measurements of response inhibition/inhibitory control^{12,13}. However, most of these paradigms performed in rodents not only require long-term training so that subjects can distinguish the response requirements represented by different signals, but also the individual differences in learning speed and learning effects may interfere with the results of subsequent inhibitory test¹¹.

In this paper, we present a novel conflict task which can be used to measure the impairment of inhibitory control after exposure to addictive drugs. In this task, a natural rewarding stimulus (sexual stimulus) that represents a high-value reward¹⁴, and the aversive stimuli (pins) that male rats have to conquer, are concurrently presented. The male rats have to climb or jump over the obstacle full of pins to approach and investigate the sexual partner. If the animal persists in its approaching behavior regardless of the aversive stimuli, it is considered as a maladaptive or risky reward-seeking behavior. One of the rationales for establishing this task is that it is conceptually simple and does not place heavy demands on executive processes as other tasks do. Compared to other tasks which measure response inhibition, this conflict task is based on natural behavior, and rats with normal sexual function and sexual experience can be tested directly without a learning process. Another rationale is that a conflict presented in this task between approaching the reward and avoiding the aversive stimuli (or the risk of being pricked) may have a better validity, as it mimics what occurs in addicts who often place themselves in the similar conflict but persistently pursue drug reward regardless of the risk of negative consequences in real life¹⁵.

Therefore, application of this conflict model is a quick and sensitive way to discover the deficit in inhibitory control after exposure to addictive drugs, or other factors that may influence ability of inhibitory control, such as stress. It also provides a novel behavioral strategy for investigation of neural mechanisms underlying deficits in inhibitory control. Furthermore, alternative modifications can be added onto this task. For example, altering the cost/benefit ratio by replacing the sexual stimulus with the social stimulus can reveal more behavioral significances.

PROTOCOL:

This study is approved by the International Review Board (IRB) of the Institute of Psychology, Chinese Academy of Sciences, and all experiments are conducted in accordance with the National Institutes of Health Guide for Care and Use of Laboratory Animals (Publication No. 85-23, revised 1985).

1. Materials and setup for the conflict model

1.1. House four rats per cage (50 cm long x 22.5 cm wide x 30 cm high) in colony rooms with controlled temperature (22–25 °C) and a reversed 12 h/12 h light/dark cycle (lights on at 21:00) for at least 10 days.

NOTE: Male and female Sprague-Dawley rats weighing 330–400 and 230–250 g at the beginning of the experiments, respectively were used.

1.2. Perform all the tests under dim lighting during the dark phase.

1.3. Use the opaque cartons (37 cm long x 26 cm wide x 18 cm high) with pine wood shaving bedding to transport rats from home cages to testing rooms.

1.4. Handle rats 3 min each per day for 5 days prior to beginning the experiments.

1.5. Prepare 120 mL of morphine for the whole experiment. Dissolve morphine hydrochloride in 0.9% NaCl (physiological saline) at a final concentration of 20 mg/mL. Store at room temperature (RT).

1.6. Prepare 10 mL of the pentobarbital sodium solution for the surgery. Dissolve pentobarbital sodium in 0.9% NaCl at a concentration of 1 g/mL. Store at 4 °C.

1.7. Prepare 10 mL of estradiol benzoate (EB) and 10 mL of progesterone for artificial induction of estrus. Dissolve estradiol benzoate and progesterone in sesame oil at a concentration of 0.125 mg/mL and 5 mg/mL, respectively.

NOTE: Incubate the oil suspension of EB or progesterone in a water bath (55–60 °C) for at least 1 h and then thoroughly shake it. Ensure that EB or progesterone is dissolved completely. Store at RT.

1.8. For the risky reward-seeking behavior testing, use the open-field reward-proximity chambers made of black acrylic glass. At one end of the open-field arena (85 cm long x 35 cm wide x 50 cm high) mount a wire-screen stimulus cage (15 cm long x 25 cm wide x 25 cm high). Install the board with pins on the floor about 20 cm in front of the stimulus-cage.

NOTE: Pins are fixed on the 34.5 cm long x 13 cm wide boards (**Figure 1**). The boards with three types of pins are used in turn during testing (**Table 2**).

2. Estrus induction in females and mating screening in males

2.1. Bilateral ovariectomy in female rats

2.1.1. Prepare surgical instruments and materials such as scalpels, surgical blades, hemostatic forceps, tweezers, ophthalmic scissors, gauze, cotton swabs, suture needles and silk sutures in advance, as well as 75% alcohol, iodine, sodium pentobarbital, 0.9% NaCl, penicillin sodium.

2.1.2. Intraperitoneally inject pentobarbital sodium (55 mg/kg), waiting for complete anesthesia of female rats. Rats respire smoothly and do not react to tail pinch.

NOTE: The ovariectomy is performed only when the weight of female rat reaches at least 240 g.

2.1.3. Place the female rat in prone position, shave off the fur on the back, and disinfect the exposed skin with iodophor. Then use a scalpel to make a middle vertical incision (about 2 cm long) on the back (1 cm below the edge of the ribcage).

2.1.4. Pull the skin to the left side, and blunt dissect subcutaneous tissue with hemostatic forceps to expose the lumbar muscles. Cut the muscle layer (incision of 1 cm) into the abdominal cavity, till the adipose tissue is reached.

2.1.5. Pull out the adipose tissue with bent tweezers, and locate the ovary which is a flesh-pink tissue (about 0.5 cm x 0.4 cm x 0.3 cm) surrounded by adipose tissue with the twining fallopian tube on the surface.

2.1.6. Clamp the fallopian tube with forceps and ligate it, then cut off the ovary together with the surrounding adipose tissue. Disinfect the residual fallopian tube with iodophor.

2.1.7. Put the residual fallopian tube and adipose tissue back into the abdominal cavity after ensuring no bleeding, and suture the muscle layer.

2.1.8. Remove the ovary on the other side by the same procedure and then suture the skin incision. Disinfect the incision again with iodophor. Inject 200,000 U of penicillin sodium into the hind leg muscle.

2.1.9. Place the rat on a heated blanket till awakening and then put it back into the home cage.

2.1.10. After at least two weeks of recovery, use the female rats as a tool for mating screening and behavioral testing.

NOTE: Inject 200,000 U of penicillin sodium for three consecutive days after surgery, and supply adequate water and food. Keep the ovariectomized rats single housed for one week and then house four per cage.

2.2. Induction of estrus in ovariectomized female rats

2.2.1. Handle all ovariectomized female rats three times (3 min/day) before using them for mating screening.

2.2.1.1. Gently pick up a rat from the transport box with the left hand and hold it in the arms for a few seconds. Then put the rat back into the box and repeat these operations for 3 min.

2.2.2. Subcutaneously inject estradiol benzoate (25 µg/rat) about 48–52 h before mating screening or the conflict test.

2.2.3. Subcutaneously inject progesterone (1 mg/rat) about 4–6 h before mating screening or the conflict test.

NOTE: The estrogenic hormones are injected subcutaneously on the back of the neck. Since an estrus cycle lasts for ~4–5 days, the female rats are used once a week.

2.3. Screening male rats for mating performance

NOTE: Screening is conducted under dim light during the dark phase of the light/dark cycle in the housing room.

2.3.1. Place a male rat individually into the carton (60 cm long x 50 cm wide x 40 cm high) with pine wood shaving bedding and leave it to habituate for 5 min.

2.3.2. Introduce an estrous female rat into the carton and monitor male copulatory behaviors (by experienced observers).

2.3.3. Put the rats back to home cages after male rats complete their first ejaculation within 30 min or do not display intromission within 15 min or ejaculation within 30 min.

2.3.4. Assign the male rats that pass the screening (successful ejaculation for three consecutive days) randomly into different groups (such as the saline- and morphine-treated groups).

3. Pretreatment in male rats prior to the conflict test

3.1. Binge-like morphine treatment

NOTE: Male rats are intraperitoneally injected with saline or morphine delivered in a binge-like regimen¹⁴ (Table 1).

3.1.1. Weigh the male rats and calculate the injection volume for each rat based on the body weight (see Table 1).

3.1.2. Prepare syringes with morphine or saline solutions.

3.1.3. Inject one rat at a time intraperitoneally and immediately place it gently into the home cage (4 rats/cage).

3.1.4. After at least 6 h, give the male rats the second injection in the same way.

3.2. Acute stress

NOTE: Foot shocks are delivered prior to each conflict test in four identical chambers assembled with four shock generators and controlled by professional software installed on a computer.

3.2.1. On the day of the conflict test, take the male rats to another room different from the conflict testing room.

3.2.2. Put the male rats into the chambers (30.5 cm long x 25.4 cm wide x 30.5 cm high) to habituate for 1 min.

3.2.3. Set up the software program in advance. The program includes the intermittent foot shocks delivered within 10 min (0.5 mA x 0.5 s x 10 min; mean inter-shock interval 40 s, range 10–70 s).

3.2.4. Enter animal IDs and choose whether to turn on the shock generators according to the grouping (the shock group and the control group). Then press the **start** button.

3.2.5. When the stress procedure is finished, bring the rats immediately to the conflict test room in transport boxes; one rat per box.

4. The conflict test

NOTE: The test is conducted under dim light during the dark phase of the light/dark cycle in the conflict test room.

4.1. On the day before testing, bring all rats to the conflict test room and allow them to habituate to the open-field reward-proximity chamber (without any obstacle, **Figure 1**) for 15 min.

4.2. On the testing day, place the male rat in the chamber allowing free exploration for 10 min (under the same condition as the day before testing).

4.3. Place an estrous female rat in the stimulus-cage as an incentive and allow the male subject to freely approach and investigate the incentive rat for 5 min.

4.4. After 5 min-free approach, move the male subject from the stimulus-cage to the other end of the arena, place an obstacle (a 14 cm-wide board thick with pins), and then start the first trial

of the test.

NOTE: The difficulty level of obstacles is varied among trials based on the types of pins and the height of the board. The grading system is shown in **Table 2**.

4.5. Move the male rat away from the stimulus-cage about 15-20 s after each time it surmounts the obstacle.

4.6. End a trial if the male subject climbs or jumps over the obstacle 3 times within 4 min and immediately start the next trial with increasing difficulty of the obstacle.

4.7. If a male subject surmounts the obstacle less than three times within 4 min, end the test and record the times it surmounts the obstacle.

4.8. Bring the male rat back to the home cage and scrub the open-field chamber with 0.05% glacial acetic acid.

4.9. Score each surmounting (or approaching) as per **Table 2**. Use the sum of the scores for all of the surmountings as a total score for a male subject in this conflict test.

5. Statistical analysis

5.1. Present the data as mean \pm SEM or single data points. In case that homogeneity of variance or normal distribution of the datasets is challenged, log-transform the data sets.

5.2. Analyze the effects of morphine pretreatment on reward-seeking behavior displayed on day 7 and day 17 of withdrawal (Wd7 and Wd17) using t-tests with “pretreatment” as a between-subjects factor (morphine versus saline, **Figure 2**).

5.3. Analyze the effects of morphine pretreatment on reward-seeking behavior after repeated testing using repeated-measure’s analysis of variance (ANOVA) with “withdrawal time” (Wd7 versus Wd14) as the within-subjects factor and “pretreatment” (morphine versus saline) as a between-subjects factor.

5.4. In addition, use Pearson’s correlation to analyze the correlation between the scores that male subjects acquired on days 7 and 14 of abstinence (Wd7 and Wd14, **Figure 3**).

NOTE: After the logarithmic conversion of the original data, statistical analyses are performed.

5.5. Analyze the effect of acute stress on reward-seeking behavior in drug-naïve rats using t-test with stress as a between-subjects factor (shock versus control, **Figure 4**)

REPRESENTATIVE RESULTS:

To explore whether this conflict model can reveal maladaptive/risky reward-seeking behavior

induced by opiates, the reward-seeking behaviors displayed by the saline- and morphine-pretreated groups were compared by t-tests after short-term (Wd7) and long-term (Wd17) withdrawal from morphine respectively (**Figure 2**). The results show that on both day 7 and day 17 of withdrawal, the morphine-pretreated rats showed significantly more approaching behaviors than the saline-pretreated rats (**Figure 2a**: $t = -3.958$; d.f. = 24; $p < 0.01$. **Figure 2b**: $t = -2.350$; d.f. = 17; $p < 0.05$), suggesting that the morphine-withdrawn rats displayed more perseverative behaviors in the face of the aversive obstacle and this maladaptive behavior persists for a long time after withdrawal.

When the rats were repeatedly tested under the conflict task (**Figure 3**), the repeated-measure ANOVA showed a significant main effect of Pretreatment ($F(1,24) = 12.910$; $p < 0.01$). Neither significant effect of Withdrawal time (comparing Wd7 and Wd14, [$F(1,24) = 0.807$; $p > 0.05$]) nor significant interaction (Withdrawal x Pretreatment interaction: $F(1,24) = 1.093$, $p > 0.05$) was found (see **Figure 3a**). To further investigate the stability of the risky reward-seeking behavior, the correlation of the scores between different withdrawal periods (between Wd7 and Wd14) was analyzed. The results showed that the approaching behaviors during short- and long-term withdrawal periods were significantly correlated (Pearson correlation: $r = 0.445$; $p < 0.05$, see **Figure 3b**), indicating that the rats' risky reward-seeking behaviors were roughly stable over repeated tests.

To investigate the influence of stressful events on the ability of inhibitory control in animals, the drug-naïve rats were exposed to an intermittent foot-shock stress before the conflict test. Although there was no significant difference between the stress and control groups (**Figure 4a**: $t = -1.207$; d.f. = 17; $p > 0.05$), the reward-seeking behaviors displayed a bi-modal distribution within the stress group, suggesting the markedly differential effects of acute stress on risky reward-seeking behaviors among individuals (see **Figure 4b**).

FIGURE AND TABLE LEGENDS:

Figure 1: The apparatus for the conflict test. The open-field chamber (85 cm long x 35 cm wide x 50 cm high) with a stimulus cage holding an estrous female rat was used for testing the reward-seeking behaviors under conflict. The male subjects had to surmount a dangerous obstacle, i.e., climbing over a continuously heightened board (34.5 cm long x 13 cm wide) thick with pins, to approach the stimulus cage.

Figure 2: The risky reward-seeking behaviors in the conflict tests displayed by male rats. (a) The scores for approaching behaviors displayed by the morphine- (black) and saline- (white) treated groups on day 7 of withdrawal. (b) The scores for approaching behaviors displayed by the morphine- (black) and saline- (white) treated groups on day 17 of withdrawal. The bars represent mean \pm SEM. * indicates $p < 0.05$; ** indicates $p < 0.01$; Sal = Saline, Mor = Morphine. This figure has been modified from¹⁷ with permission.

Figure 3: The risky reward-seeking behaviors consecutively tested on day 7 and 14 of withdrawal from morphine. (a) The scores for approaching behaviors displayed by the

morphine- (black) and saline- (white) treated groups on day 7 and 14 of withdrawal (Wd7 and Wd14). The bars represent mean \pm SEM. **(b)** The correlation of the scores for risky reward-seeking behaviors between two tests on day 7 and 14 of withdrawal. * indicates $p < 0.05$; ** indicates $p < 0.01$. Sal = Saline, Mor = Morphine.

Figure 4: Effect of the foot-shock stress on reward-seeking behaviors in the conflict test. (a) The scores for approaching behaviors displayed by the control (gray) and shock (black) groups subjected to saline pretreatment. The bars represent mean \pm SEM. * indicates $p < 0.05$; ** indicates $p < 0.01$. (b) The scores for approaching behaviors displayed by the control and shock groups are shown in single points. These figures have been modified from¹⁷ with permission.

Table 1: Binge-like morphine treatment regimen. Male rats are pretreated twice daily for 5 days with intraperitoneal injections of either saline or morphine delivered in a binge-like regimen¹⁷: 10, 20, 20, 40, 40, 40, 40, 40, 40, and 40 mg/kg. The two doses of morphine administered on each day are at least 6 h apart.

Table 2: The grading for the amount of difficulty the subject conquered per approach. According to the length of pins and average distance between pins, three types of board thick with pins were used: *a* with pin-length of 0.5 cm, average distance of 1 cm; *b* with pin-length of 0.8 cm, average distance of 0.5 cm; and *c* with pin-length of 2 cm, average distance of 1 cm. The board was repeatedly heightened as follows: 0, 2, 4, 7, 10, 13, 17, 21, 25, and 29 cm. Thus, there are 12 levels of difficulty of surmounting the obstacle, i.e., 12 trials, during the test. The amount of difficulty the subject conquered each time to approach the stimulus cage is scored and summed up to the total score for each subject¹⁷.

DISCUSSION:

The inhibitory control deficits caused by drug abuse¹⁸ play a key role in promoting compulsive drug seeking/taking behaviors and relapse^{19,20}. The conflict model presented here provides a new approach to explore the changes in inhibitory control of the individuals exposed to addictive drugs.

There are several critical steps in the protocol. First of all, the subjects (male rats) must acquire sexual experience before entering the follow-up conflict task. For example, the male rats need to pass the screening for copulation (copulating at least three times) before drug treatment, and are assigned into different groups randomly. In order to carry out the copulation screening smoothly, two points should be paid attention to. One is the body weight of female rats upon ovariectomy. The ovariectomy is performed only when the weight of female rats reaches at least 240 g. Since the body maturation of female rats occurs later than gonadal maturation²¹, early ovariectomy could hinder male rats from successfully copulating with female rats even though the females were administered estrogenic hormones. The other point is that male rats should habituate to the screening boxes before copulation with female rats, in order to avoid the influence of neophobia to a novel context on following copulation.

Stress factors should be tightly controlled throughout the experiment. Both male and female rats

are handled and habituated to transportation before the conflict task starts. Moreover, during the habituation to the reward-proximity chamber before the testing day, male rats are repeatedly grasped and moved from the front of the stimulus cage to the other end of the chamber several times.

As the conflict task continues, the obstacle (the board with pins) is repeatedly heightened, thus male rats behind the obstacle cannot see or directly feel the female rat in the stimulus cage any more. In order to keep the male rats attracted continuously by the sexual partner, some bedding material soiled by estrous female rats are placed in the stimulus cage, allowing the female odor to diffuse in the air. The beddings are collected ahead of the conflict task and stored at -20 °C until use.

In this conflict task, one can also investigate the impact of reward value on reward-seeking behaviors, for example, changing the reward value by replacing the female rat (sexual reward) with a male rat (social reward)^{14,16}. If both sexual and social rewards are used in one experiment, it would be best to run the experiment in two reward-proximity chambers, one for sexual reward and the other one for social reward. If the experiment has to be carried out in one chamber, both the chamber and the stimulus cage must be carefully cleaned with 0.1% glacial acetic acid between subjects as well as tests, in order to avoid the olfactory cross-contamination between male and female stimuli. The pins on board should be renewed regularly to ensure their constant threat to male rats.

The male rats' performance may be subject to exercising effect with repeated testing under this conflict task. We noticed that some animals (especially the saline-pretreated rats) could avoid the pins better through exercising on jumping over the obstacle during the second test (**Figure 3a**). Although there is a significant correlation between the risky reward-seeking behaviors during the two repeated tests, it has not been verified if this task can be used for identifying the high- and low-risk phenotypes of reward-seeking behavior. Hence, so far this conflict task is suited to quickly probe any changes in inhibitory control after pharmacological or behavioral treatments.

Compared with go/no-go task, stop signal task, multiple choices serial reaction time task and reversal learning, which reflect the subject's ability of inhibition on the inappropriate responses after learning the rules of tasks^{2,5}, in this conflict task, the subjects do not need to inhibit any learned responses but inhibit their spontaneous craving/motivation due to the possible negative consequence. Hence this conflict task better mimics the conflict situation which addicts often face and helps to examine the ability of inhibitory control during the psychological process of weighing up the cost and benefit. Moreover, in contrast with other decision-making tasks, such as risky decision making^{22,23} or gambling task^{24,25}, this conflict task is simpler and easier to perform, since it only consists of single reward and single risk.

The conflict model we established can be used to reveal deficits in inhibitory control after exposure to the opiate drug—morphine. We believe that this behavioral model would also be useful for quickly discovering the impairment of inhibitory control induced by other addictive drugs. Furthermore, the reliable opiate-induced compulsive reward-seeking behavioral

phenotype will be identified based on this conflict model. At present, we are working to replace the obstacle (the board full of pins) with an electric grid so that foot shocks can be delivered to male rats, and are also modifying the behavioral procedure for repeatedly measuring animal's reward-seeking behaviors in the face of the negative consequence (foot shocks). As is known, there is no available behavioral model of opiate-induced compulsive reward-seeking behavior so far, which is probably because of the analgesic effect of opiates^{26,27}.

Clinically, stress is one of the important factors leading to relapse after drug withdrawal²⁸. In addition, stress also is an important influencing factor for behavioral inhibition/impulsivity/compulsivity²⁹. The introduction of this conflict model also allows us to observe the influences of various stressful events on the ability of inhibitory control in subjects quickly following exposure to abused drugs.

ACKNOWLEDGMENTS:

This paper was supported by CAS Key Laboratory of Mental Health, Institute of Psychology (KLMH2016K01) and Evaluation and Intervention Technology Research for Post-traumatic Stress Patients Population (JCYJ20170413170301569)

DISCLOSURES:

The authors have nothing to disclose.

REFERENCES:

1. Everitt, B. J., Robbins, T. W. Drug Addiction: Updating Actions to Habits to Compulsions Ten Years On. *Annual Review of Psychology*. **67**, 23–50 (2016).
2. Bari, A., Robbins, T. W. Inhibition and impulsivity: Behavioral and neural basis of response control. *Progress in Neurobiology*. **108**, 44–79 (2013).
3. Dalley, J. W., Everitt, B. J., Robbins, T. W. Impulsivity, compulsivity, and top-down cognitive control. *Neuron*, **69** (4), 680–694 (2011).
4. Peter, W., Kalivas, N. D. V. The Neural Basis of Addiction: A Pathology of Motivation and Choice. *American Journal of Psychiatry*. **162**, 1403–1413(2005).
5. Morein-Zamir, S., Robbins, T. W. Fronto-striatal circuits in response-inhibition: Relevance to addiction. *Brain Research*. **1628**, 117–129 (2015).
6. Garavan, H. Dissociable Executive Functions in the Dynamic Control of Behavior: Inhibition, Error Detection, and Correction. *Neuroimage*. **17** (4), 1820–1829 (2002).
7. Garavan, H., Ross, T. J., Kaufman, J., Stein, E. A. A midline dissociation between error-processing and response-conflict monitoring. *Neuroimage*. **20** (2), 1132–1139 (2003).
8. Connolly, C. G., Foxe, J. J., Nierenberg, J., Shpaner, M., Garavan, H. The neurobiology of

cognitive control in successful cocaine abstinence. *Drug and Alcohol Dependence*. **121** (1–2), 45–53 (2012).

9. Kaufman, J. N., Ross, T. J., Stein, E. A., Garavan, H. Cingulate hypoactivity in cocaine users during a GO-NOGO task as revealed by event-related functional magnetic resonance imaging. *The Journal of Neuroscience*. **23** (21), 7839–7843 (2003).

10. Forman, S. D. *et al.* Brain activity of opiate addicts predicts subsequent treatment retention. *Annual Meeting of the American-College-of-Neuropsychopharmacology*. DEC 12–16 (2004).

11. Kolokotroni, K. Z., Rodgers, R. J., Harrison, A. A. Acute nicotine increases both impulsive choice and behavioural disinhibition in rats. *Psychopharmacology*. **217**, 455–473 (2011).

12. Belin-Rauscent, A. *et al.* From impulses to maladaptive actions: the insula is a neurobiological gate for the development of compulsive behavior. *Molecular Psychiatry*. **21** (4), 491–499 (2016).

13. Groman, S. M. *et al.* Dysregulation of D(2)-mediated dopamine transmission in monkeys after chronic escalating methamphetamine exposure. *Journal of Neuroscience*. **32** (17), 5843–5852 (2012).

14. Bai, Y., Li, Y., Lv, Y., Liu, Z., Zheng, X. Complex motivated behaviors for natural rewards following a binge-like regimen of morphine administration: mixed phenotypes of anhedonia and craving after short-term withdrawal. *Frontiers in Behavioral Neuroscience*. **8**, 23 (2014).

15. Vandaale, Y., Janak, P. H. Defining the place of habit in substance use disorders. *Progress in Neuropsychopharmacology & Biological Psychiatry*. **87** (Pt A), 22–32 (2018).

16. Li, Y. *et al.* The consummatory and motivational behaviors for natural rewards following long-term withdrawal from morphine: no anhedonia but persistent maladaptive behaviors for high-value rewards. *Psychopharmacology (Berl)*. **234** (8), 1277–1292 (2017).

17. Bai, Y., Belin, D., Zheng, X., Liu, Z., Zhang, Y. Acute stress worsens the deficits in appetitive behaviors for social and sexual stimuli displayed by rats after long-term withdrawal from morphine. *Psychopharmacology*. **234**:1693–1702 (2017).

18. Schoenbaum, G., Saddoris, M.P., R, S.J., Shaham, Y., Setlow, B. Cocaine- experienced rats exhibit learning deficits in a task sensitive to orbitofrontal cortex lesions. *European Journal of Neuroscience*. **19** (7), 1997–2002 (2004).

19. Belin, D., Belin-Rauscent, A., Murray, J. E., Everitt, B. J. Addiction: failure of control over maladaptive incentive habits. *Current Opinion in Neurobiology*. **23** (4), 564–572 (2013).

20. Everitt, B. J. Neural and psychological mechanisms underlying compulsive drug seeking habits and drug memories--indications for novel treatments of addiction. *European Journal of*

529 *Neuroscience*. **40** (1), 2163-2182 (2014).

530
531 21. Dai, F. *et al.* Dynamic Development of Organs and Serum Sex Hormone Levels in Normal Pre-
532 pubertal Female Sprague-Dawley Rats. *Chinese Journal of Comparative Medicine*. **19** (07):33-
533 37+86 (2009).

534
535 22. Orsini, C. A., Trotta, R. T., Bizon, J. L., Setlow, B. Dissociable roles for the basolateral amygdala
536 and orbitofrontal cortex in decision-making under risk of punishment. *Journal of Neuroscience*.
537 **35** (4), 1368-1379 (2015).

538
539 23. Shimp, K. G., Mitchell, M. R., Beas, B. S., Bizon, J. L., Setlow, B. Affective and cognitive
540 mechanisms of risky decision making. *Neurobiology of Learning and Memory*. **117**, 60-70 (2015).

541
542 24. Di Ciano, P., Le Foll, B. Evaluating the Impact of Naltrexone on the Rat Gambling Task to Test
543 Its Predictive Validity for Gambling Disorder. *PLoS One*. **11** (5), e0155604 (2016).

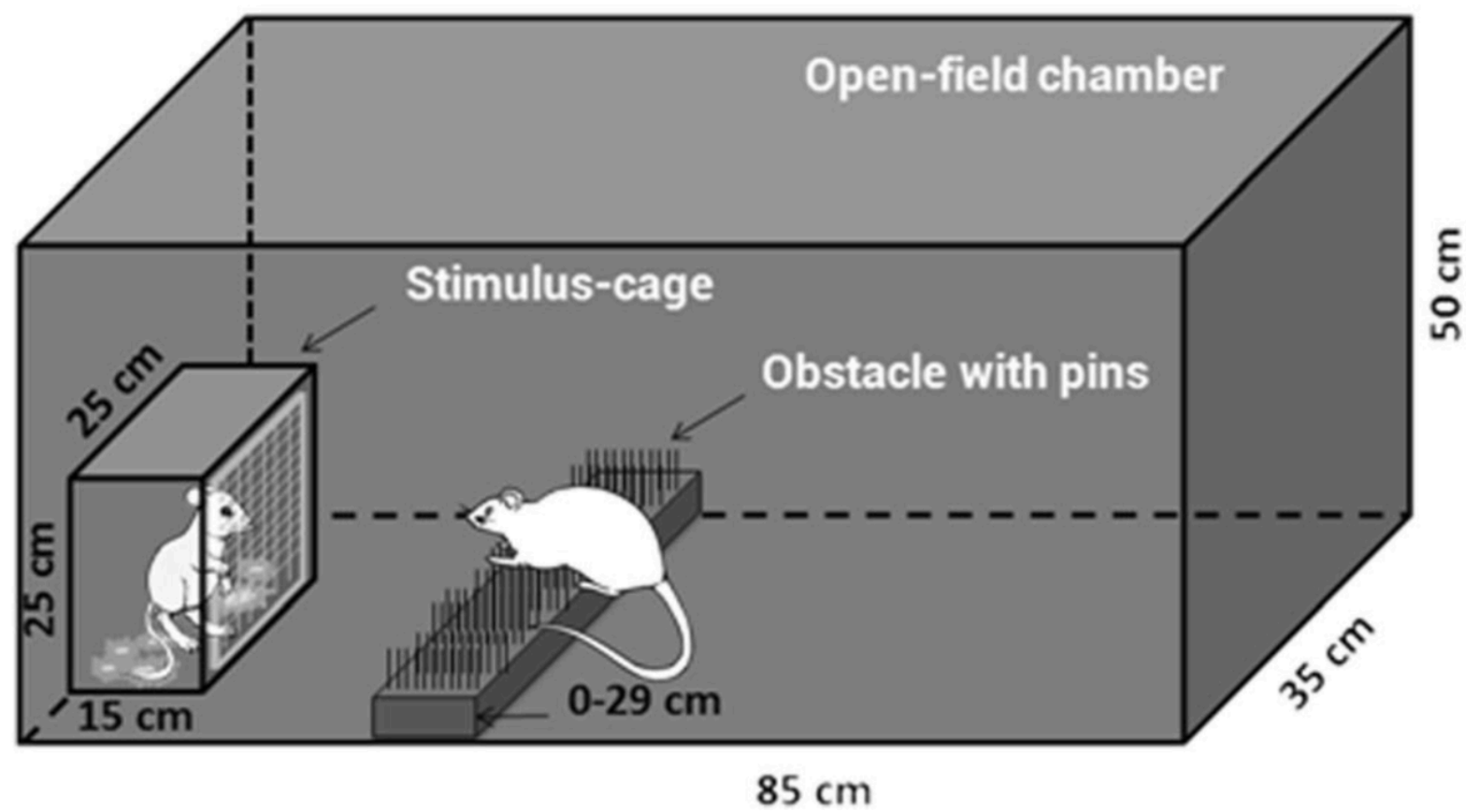
544
545 25. Ravel, N. *et al.* Elucidating Poor Decision-Making in a Rat Gambling Task. *PLoS One*. **8** (12),
546 e82052 (2013).

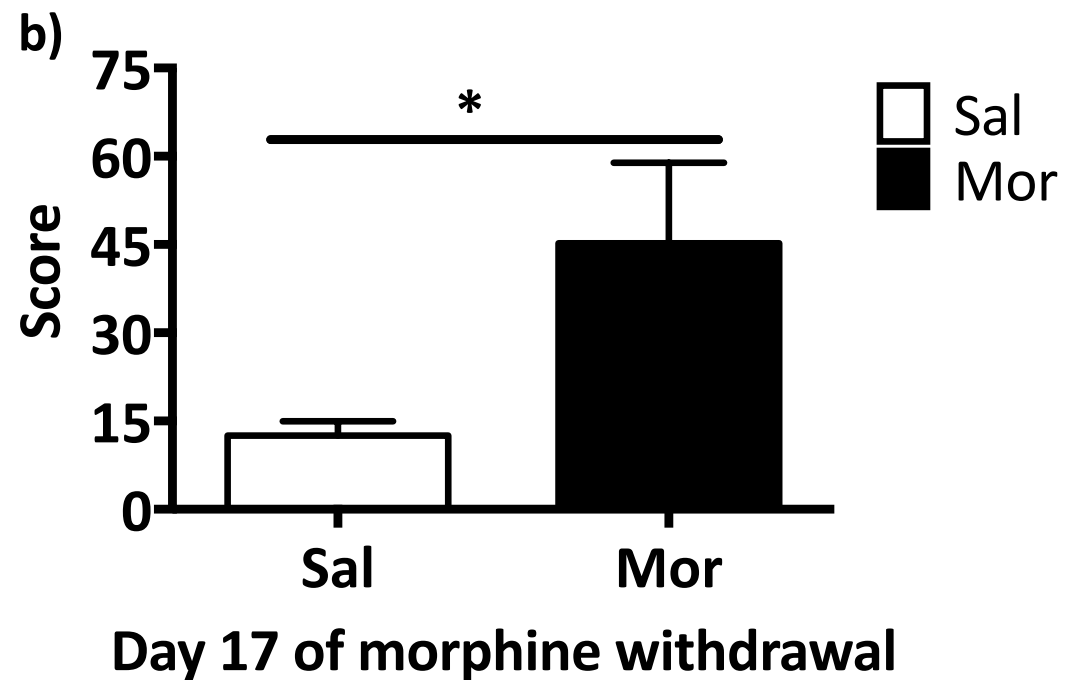
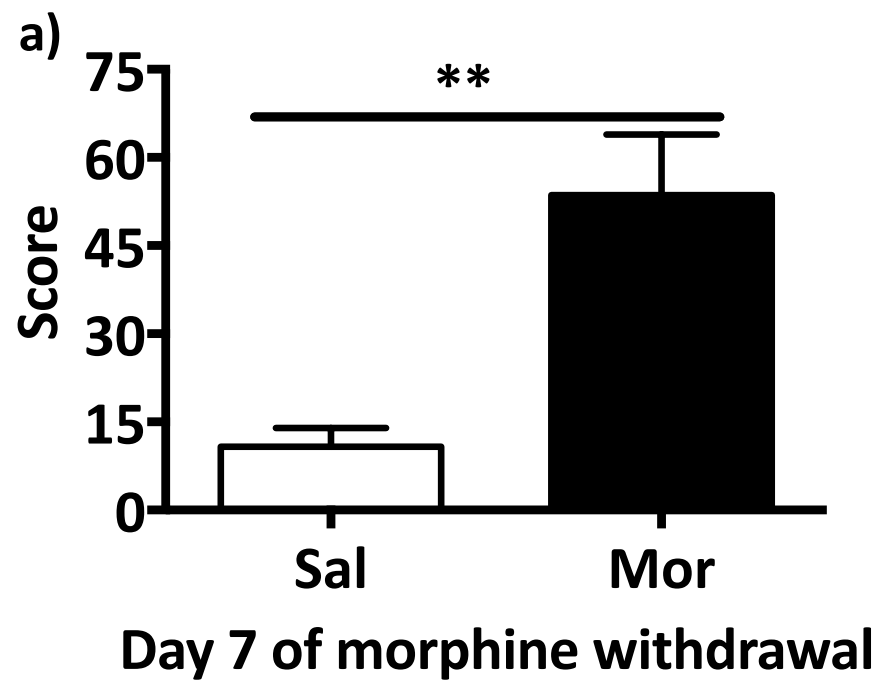
547
548 26. Charles, A., Pradhan, A. A. Delta-opioid receptors as targets for migraine therapy. *Current*
549 *Opinion in Neurology*. **29** (3), 314–319 (2016).

550
551 27. Lu, Z. *et al.* Truncated mu-Opioid Receptors with 6 Transmembrane Domains Are Essential
552 for Opioid Analgesia. *Anesthesia & Analgesia*. **126** (3), 1050–1057 (2018).

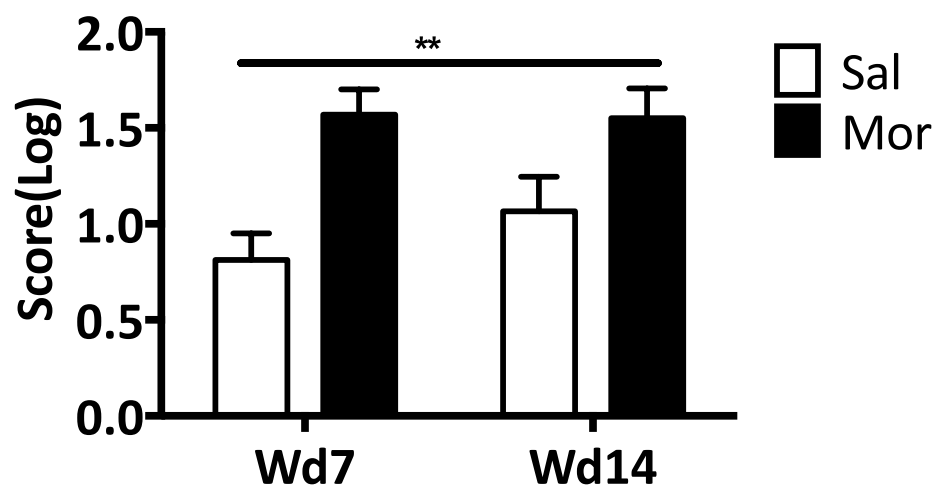
553
554 28. Sinha, R., Shaham, Y., Heilig, M. Translational and reverse translational research on the role
555 of stress in drug craving and relapse. *Psychopharmacology (Berl)*. **218** (1), 69–82 (2011).

556
557 29. Wilson, C. A., Schade, R., Terry, A. V., Jr. Variable prenatal stress results in impairments of
558 sustained attention and inhibitory response control in a 5-choice serial reaction time task in rats.
559 *Neuroscience*. **218**, 126–137 (2012).





a)



Continuous testing on day 7 and 14 of morphine withdrawal

b)

The correlation between W7 and W14

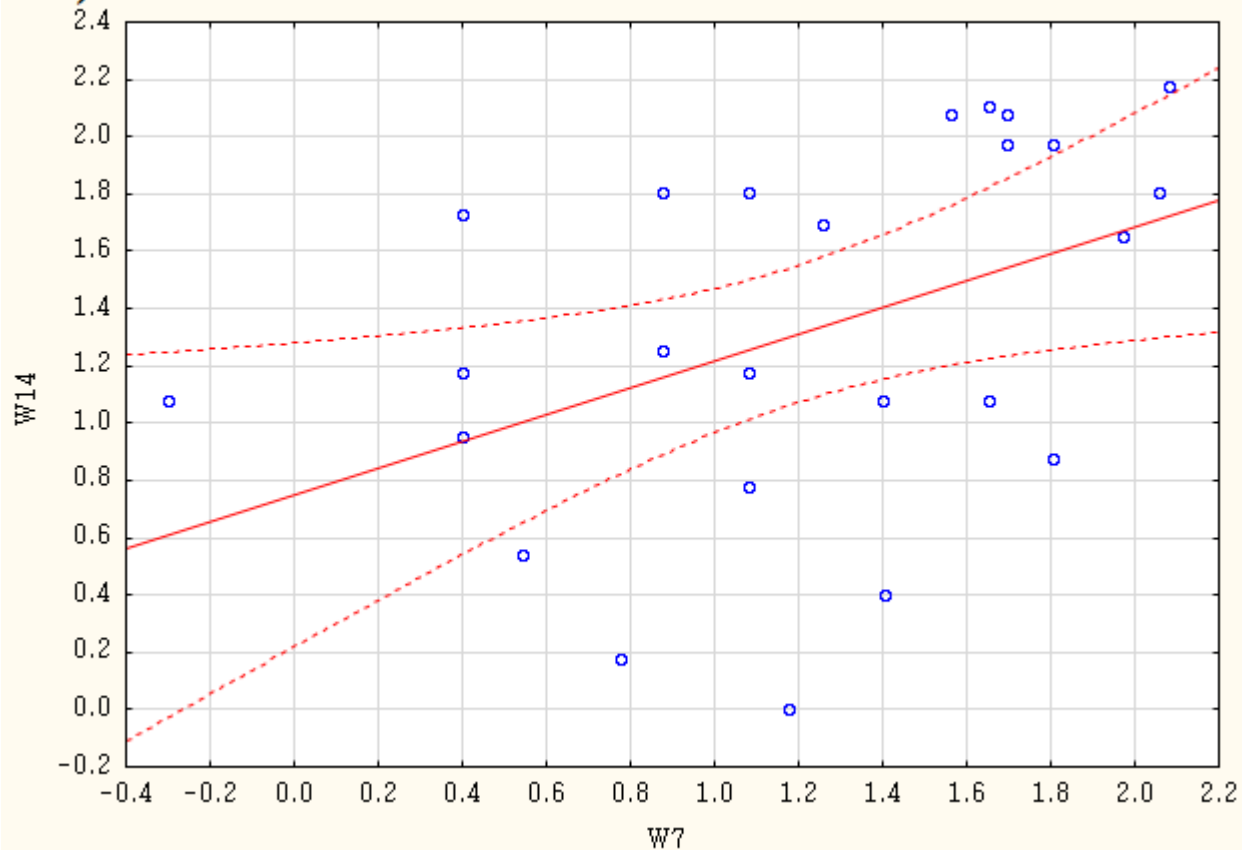
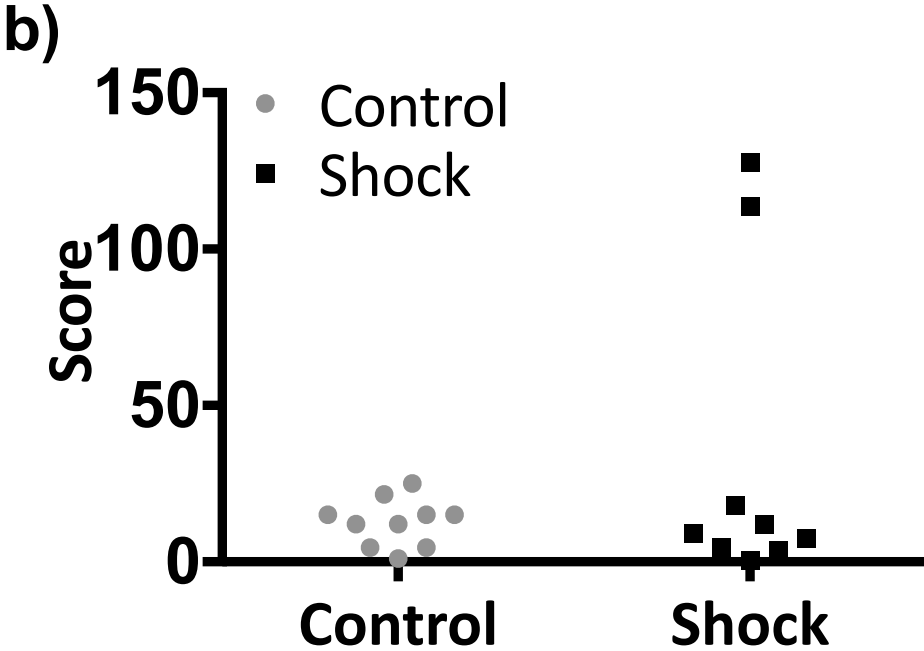
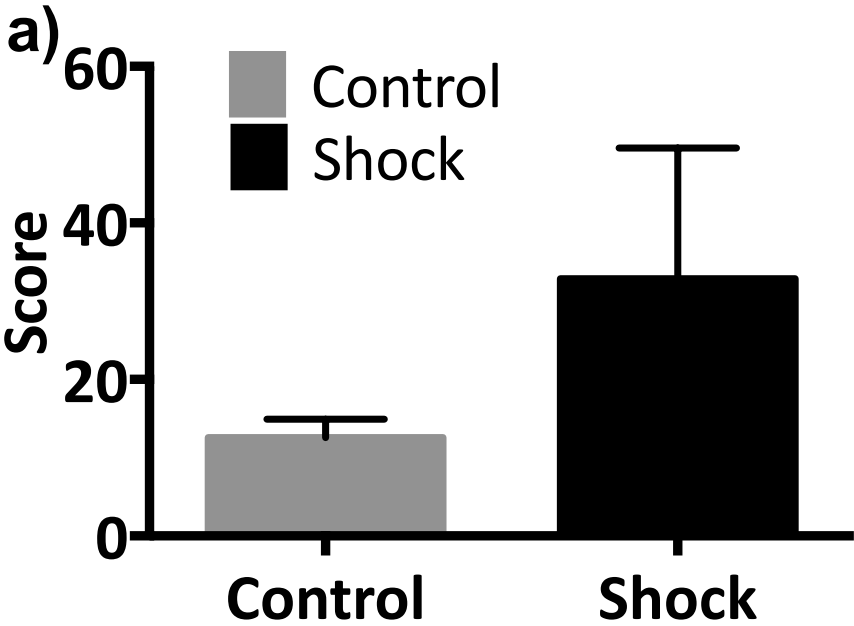


Figure 4



	Day 1	Day 2	Day 3	Day 4	Day 5
1 st injection	10 mg/kg	20 mg/kg	40 mg/kg	40 mg/kg	40 mg/kg
2 nd injection (6h later)	20 mg/kg	40 mg/kg	40 mg/kg	40 mg/kg	40 mg/kg

Trial	Obstacle	Scoring per approach
1	a + 0 cm	0.5
2	a + 2 cm	1.0
3	a + 4 cm	1.5
4	b + 4 cm	3.0
5	b + 7 cm	3.5
6	b + 10 cm	4.0
7	b + 13 cm	4.5
8	b + 17 cm	5.0
9	c + 17 cm	6.0
10	c + 21 cm	6.5
11	c + 25 cm	7.0
12	c + 29 cm	7.5

Name of Material/ Equipment	Company	Catalog Number	Comments/Description
Acetic acid	Beijing Tongguangjingxi Chemical company	CN No.81601	CH3COOH
Benzypenicillin sodium for Injection	Huabei Pharmaceutical Wan Xin, Shandong,	F7072109	C16H17N2NaO4S
Cotton swabs	China	8 cm	
β-estradiol benzoate	SIGMA-ALDRICH Wan Xin, Shandong,	E8515-200MG	estradiol benzoate
Gauze	China Beijing Zhong Sheng	21s × 21s 110×100	
Hemostatic forceps	Wanda Biotechnology		
Morphine hydrochloride	Qinghai Pharmaceutical Co. Ltd Beijing Zhong Sheng	20100105	Morphine hydrochloride
Ophthalmic scissors	Wanda Biotechnology		
Pentobarbital Sodium	Sigma		C11H17O3N2Na
Precision animal shocker	Coulbourn		
Progesterone	SIGMA-ALDRICH	V900699-5G	progesterone
Sesama oil	Fengyi trading company ltd.		Sesama oil

Sodium chloride injection	HuaLu		
Scalpels	Pharmaceutical Gillette	H17092107 96797241	NaCl
Surgical blades	Shanghai Pudong Jinhuan Medical Products Co.,Ltd		
Suture needles	Han Qin, Shanghai, China	Δ1/2 6×14	
Silk sutures	Shanghai Pudong Jinhuan Medical Products Co.,Ltd		
Sprague-Dawley rats	Vital River Animal Center, Beijing, China	Sprague-Dawley	animal strain
Syringe	WeiGao Group Medical Polymer Co.Ltd	1ml, 2ml	
Tweezers	Wanda Biotechnology Co.,Ltd.		

ARTICLE AND VIDEO LICENSE AGREEMENT

Title of Article:

A Conflict Model of Reward-Seeking Behavior in Male Rats

Author(s):

Shaofei Jiang, Yue Zhang, Xigeng Zheng, Haoshuang Luo, Zhengkui Liu, Yunjing Bai

Item 1: The Author elects to have the Materials be made available (as described at <http://www.jove.com/publish>) via:



Standard Access



Open Access

Item 2: Please select one of the following items:



The Author is **NOT** a United States government employee.



The Author is a United States government employee and the Materials were prepared in the course of his or her duties as a United States government employee.



The Author is a United States government employee but the Materials were NOT prepared in the course of his or her duties as a United States government employee.

ARTICLE AND VIDEO LICENSE AGREEMENT

1. **Defined Terms.** As used in this Article and Video License Agreement, the following terms shall have the following meanings: **"Agreement"** means this Article and Video License Agreement; **"Article"** means the article specified on the last page of this Agreement, including any associated materials such as texts, figures, tables, artwork, abstracts, or summaries contained therein; **"Author"** means the author who is a signatory to this Agreement; **"Collective Work"** means a work, such as a periodical issue, anthology or encyclopedia, in which the Materials in their entirety in unmodified form, along with a number of other contributions, constituting separate and independent works in themselves, are assembled into a collective whole; **"CRC License"** means the Creative Commons Attribution-Non Commercial-No Derivs 3.0 Unported Agreement, the terms and conditions of which can be found at: <http://creativecommons.org/licenses/by-nc-nd/3.0/legalcode>; **"Derivative Work"** means a work based upon the Materials or upon the Materials and other pre-existing works, such as a translation, musical arrangement, dramatization, fictionalization, motion picture version, sound recording, art reproduction, abridgment, condensation, or any other form in which the Materials may be recast, transformed, or adapted; **"Institution"** means the institution, listed on the last page of this Agreement, by which the Author was employed at the time of the creation of the Materials; **"JoVE"** means MyJoVE Corporation, a Massachusetts corporation and the publisher of The Journal of Visualized Experiments; **"Materials"** means the Article and / or the Video; **"Parties"** means the Author and JoVE; **"Video"** means any video(s) made by the Author, alone or in conjunction with any other parties, or by JoVE or its affiliates or agents, individually or in collaboration with the Author or any other parties, incorporating all or any portion

of the Article, and in which the Author may or may not appear.

2. **Background.** The Author, who is the author of the Article, in order to ensure the dissemination and protection of the Article, desires to have the JoVE publish the Article and create and transmit videos based on the Article. In furtherance of such goals, the Parties desire to memorialize in this Agreement the respective rights of each Party in and to the Article and the Video.

3. **Grant of Rights in Article.** In consideration of JoVE agreeing to publish the Article, the Author hereby grants to JoVE, subject to **Sections 4** and **7** below, the exclusive, royalty-free, perpetual (for the full term of copyright in the Article, including any extensions thereto) license (a) to publish, reproduce, distribute, display and store the Article in all forms, formats and media whether now known or hereafter developed (including without limitation in print, digital and electronic form) throughout the world, (b) to translate the Article into other languages, create adaptations, summaries or extracts of the Article or other Derivative Works (including, without limitation, the Video) or Collective Works based on all or any portion of the Article and exercise all of the rights set forth in (a) above in such translations, adaptations, summaries, extracts, Derivative Works or Collective Works and (c) to license others to do any or all of the above. The foregoing rights may be exercised in all media and formats, whether now known or hereafter devised, and include the right to make such modifications as are technically necessary to exercise the rights in other media and formats. If the "Open Access" box has been checked in **Item 1** above, JoVE and the Author hereby grant to the public all such rights in the Article as provided in, but subject to all limitations and requirements set forth in, the CRC License.

ARTICLE AND VIDEO LICENSE AGREEMENT

4. **Retention of Rights in Article.** Notwithstanding the exclusive license granted to JoVE in **Section 3** above, the Author shall, with respect to the Article, retain the non-exclusive right to use all or part of the Article for the non-commercial purpose of giving lectures, presentations or teaching classes, and to post a copy of the Article on the Institution's website or the Author's personal website, in each case provided that a link to the Article on the JoVE website is provided and notice of JoVE's copyright in the Article is included. All non-copyright intellectual property rights in and to the Article, such as patent rights, shall remain with the Author.

5. **Grant of Rights in Video – Standard Access.** This **Section 5** applies if the "Standard Access" box has been checked in **Item 1** above or if no box has been checked in **Item 1** above. In consideration of JoVE agreeing to produce, display or otherwise assist with the Video, the Author hereby acknowledges and agrees that, Subject to **Section 7** below, JoVE is and shall be the sole and exclusive owner of all rights of any nature, including, without limitation, all copyrights, in and to the Video. To the extent that, by law, the Author is deemed, now or at any time in the future, to have any rights of any nature in or to the Video, the Author hereby disclaims all such rights and transfers all such rights to JoVE.

6. **Grant of Rights in Video – Open Access.** This **Section 6** applies only if the "Open Access" box has been checked in **Item 1** above. In consideration of JoVE agreeing to produce, display or otherwise assist with the Video, the Author hereby grants to JoVE, subject to **Section 7** below, the exclusive, royalty-free, perpetual (for the full term of copyright in the Article, including any extensions thereto) license (a) to publish, reproduce, distribute, display and store the Video in all forms, formats and media whether now known or hereafter developed (including without limitation in print, digital and electronic form) throughout the world, (b) to translate the Video into other languages, create adaptations, summaries or extracts of the Video or other Derivative Works or Collective Works based on all or any portion of the Video and exercise all of the rights set forth in (a) above in such translations, adaptations, summaries, extracts, Derivative Works or Collective Works and (c) to license others to do any or all of the above. The foregoing rights may be exercised in all media and formats, whether now known or hereafter devised, and include the right to make such modifications as are technically necessary to exercise the rights in other media and formats. For any Video to which this **Section 6** is applicable, JoVE and the Author hereby grant to the public all such rights in the Video as provided in, but subject to all limitations and requirements set forth in, the CRC License.

7. **Government Employees.** If the Author is a United States government employee and the Article was prepared in the course of his or her duties as a United States government employee, as indicated in **Item 2** above, and any of the licenses or grants granted by the Author hereunder exceed the scope of the 17 U.S.C. 403, then the rights granted hereunder shall be limited to the maximum

rights permitted under such statute. In such case, all provisions contained herein that are not in conflict with such statute shall remain in full force and effect, and all provisions contained herein that do so conflict shall be deemed to be amended so as to provide to JoVE the maximum rights permissible within such statute.

8. **Protection of the Work.** The Author(s) authorize JoVE to take steps in the Author(s) name and on their behalf if JoVE believes some third party could be infringing or might infringe the copyright of either the Author's Article and/or Video.

9. **Likeness, Privacy, Personality.** The Author hereby grants JoVE the right to use the Author's name, voice, likeness, picture, photograph, image, biography and performance in any way, commercial or otherwise, in connection with the Materials and the sale, promotion and distribution thereof. The Author hereby waives any and all rights he or she may have, relating to his or her appearance in the Video or otherwise relating to the Materials, under all applicable privacy, likeness, personality or similar laws.

10. **Author Warranties.** The Author represents and warrants that the Article is original, that it has not been published, that the copyright interest is owned by the Author (or, if more than one author is listed at the beginning of this Agreement, by such authors collectively) and has not been assigned, licensed, or otherwise transferred to any other party. The Author represents and warrants that the author(s) listed at the top of this Agreement are the only authors of the Materials. If more than one author is listed at the top of this Agreement and if any such author has not entered into a separate Article and Video License Agreement with JoVE relating to the Materials, the Author represents and warrants that the Author has been authorized by each of the other such authors to execute this Agreement on his or her behalf and to bind him or her with respect to the terms of this Agreement as if each of them had been a party hereto as an Author. The Author warrants that the use, reproduction, distribution, public or private performance or display, and/or modification of all or any portion of the Materials does not and will not violate, infringe and/or misappropriate the patent, trademark, intellectual property or other rights of any third party. The Author represents and warrants that it has and will continue to comply with all government, institutional and other regulations, including, without limitation all institutional, laboratory, hospital, ethical, human and animal treatment, privacy, and all other rules, regulations, laws, procedures or guidelines, applicable to the Materials, and that all research involving human and animal subjects has been approved by the Author's relevant institutional review board.

11. **JoVE Discretion.** If the Author requests the assistance of JoVE in producing the Video in the Author's facility, the Author shall ensure that the presence of JoVE employees, agents or independent contractors is in accordance with the relevant regulations of the Author's institution. If more than one author is listed at the beginning of this Agreement, JoVE may, in its sole

ARTICLE AND VIDEO LICENSE AGREEMENT

discretion, elect not take any action with respect to the Article until such time as it has received complete, executed Article and Video License Agreements from each such author. JoVE reserves the right, in its absolute and sole discretion and without giving any reason therefore, to accept or decline any work submitted to JoVE. JoVE and its employees, agents and independent contractors shall have full, unfettered access to the facilities of the Author or of the Author's institution as necessary to make the Video, whether actually published or not. JoVE has sole discretion as to the method of making and publishing the Materials, including, without limitation, to all decisions regarding editing, lighting, filming, timing of publication, if any, length, quality, content and the like.

12. **Indemnification.** The Author agrees to indemnify JoVE and/or its successors and assigns from and against any and all claims, costs, and expenses, including attorney's fees, arising out of any breach of any warranty or other representations contained herein. The Author further agrees to indemnify and hold harmless JoVE from and against any and all claims, costs, and expenses, including attorney's fees, resulting from the breach by the Author of any representation or warranty contained herein or from allegations or instances of violation of intellectual property rights, damage to the Author's or the Author's institution's facilities, fraud, libel, defamation, research, equipment, experiments, property damage, personal injury, violations of institutional, laboratory, hospital, ethical, human and animal treatment, privacy or other rules, regulations, laws, procedures or guidelines, liabilities and other losses or damages related in any way to the submission of work to JoVE, making of videos by JoVE, or publication in JoVE or elsewhere by JoVE. The Author shall be responsible for, and shall hold JoVE harmless from, damages caused by lack of sterilization, lack of cleanliness or by contamination due to

the making of a video by JoVE its employees, agents or independent contractors. All sterilization, cleanliness or decontamination procedures shall be solely the responsibility of the Author and shall be undertaken at the Author's expense. All indemnifications provided herein shall include JoVE's attorney's fees and costs related to said losses or damages. Such indemnification and holding harmless shall include such losses or damages incurred by, or in connection with, acts or omissions of JoVE, its employees, agents or independent contractors.

13. **Fees.** To cover the cost incurred for publication, JoVE must receive payment before production and publication of the Materials. Payment is due in 21 days of invoice. Should the Materials not be published due to an editorial or production decision, these funds will be returned to the Author. Withdrawal by the Author of any submitted Materials after final peer review approval will result in a US\$1,200 fee to cover pre-production expenses incurred by JoVE. If payment is not received by the completion of filming, production and publication of the Materials will be suspended until payment is received.

14. **Transfer, Governing Law.** This Agreement may be assigned by JoVE and shall inure to the benefits of any of JoVE's successors and assignees. This Agreement shall be governed and construed by the internal laws of the Commonwealth of Massachusetts without giving effect to any conflict of law provision thereunder. This Agreement may be executed in counterparts, each of which shall be deemed an original, but all of which together shall be deemed to be one and the same agreement. A signed copy of this Agreement delivered by facsimile, e-mail or other means of electronic transmission shall be deemed to have the same legal effect as delivery of an original signed copy of this Agreement.

A signed copy of this document must be sent with all new submissions. Only one Agreement is required per submission.

CORRESPONDING AUTHOR

Name:

Yunjing bai

Department:

CAS Key Laboratory of Mental Health

Institution:

Institute of Psychology, Chinese Academy of Sciences

Title:

A Conflict Model of Reward-Seeking Behavior in Male Rats

Signature:

Yunjing Bai

Date:

2018-9-22

Please submit a **signed** and **dated** copy of this license by one of the following three methods:

1. Upload an electronic version on the JoVE submission site
2. Fax the document to +1.866.381.2236
3. Mail the document to JoVE / Attn: JoVE Editorial / 1 Alewife Center #200 / Cambridge, MA 02140

Major Concerns:

1. How did the authors design the grading for the amount of difficulty the subject conquered per approach shown in Fig.5? What is the scientific evidence under this evaluation?

Reply: The conflict task introduced in this article is a new behavioral paradigm which was designed based on both the understanding of inhibitory control/compulsivity and our own experiences.

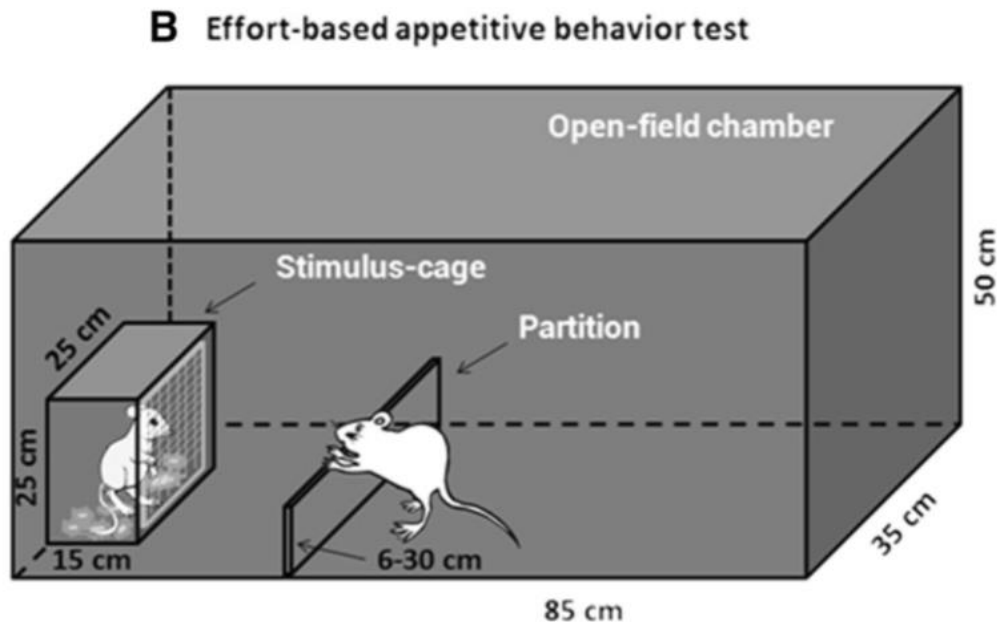
It has been well known that abused drugs can impair the ability of inhibitory control which is critically involved in compulsive drug-seeking behaviors and relapse (1,2). Some previous studies usually evaluate animals' operant responses that lead to drug reward as well as a probability of negative outcome (e.g., foot shock or quinolinic acid), and in that situation, the conflict is introduced in nature. The negative outcome-resistant responding, i.e., perseverative responding, is defined as compulsive drug seeking and taking behavior (3,4,5,6). Therefore, we established the present conflict task in which animals also face the risk of negative consequences (being pricked), aiming to reveal the impairment of the ability of inhibitory control in opiate-treated animals.

In this conflict task, we graded the difficulty of the obstacle according to the height of the barrier as well as the dangerous level of the pins. The validity of this conflict task is evidenced by our findings that morphine-treated animals always displayed more perseverative appetitive behaviors than saline-treated animals. In addition, we found the inter-individual difference in the perseverative appetitive behaviors within the morphine-treated group, well resonating with the findings that there also exist individual differences in compulsive drug-seeking behaviors induced by abused drugs/substances (3,6). We also found that inactivation of the anterior cingulate cortex (which is involved in conflict and inhibitory control) increased perseverative appetitive behaviors in saline-treated animals (unpublished data in our lab), further verifying that this task is suitable for investigating the ability of inhibitory control under various conditions..

2. The authors mentioned that this conflict task is much simpler and easier to perform, since it only consists of single reward and single risk at line 414-415. I agree that this task is very simple. However, this task contains two risks, not single risk: the pins and the height of board. Only the height of board works as difficulty/cost for reward-seeking behavior. What do the authors think of this point?

Reply: As a matter of fact, this task was developed from another task that we had designed to investigate the effort-based reward-seeking behaviors. In that task, a barrier was placed between male subject and sexual stimulus, and repeatedly heightened over trials (**Fig B**). In our opinion, the effort-based task is not related to risk since animals only need to pay labor but never face any negative consequences. Hence, the effort-based task is suited for evaluating the motivation of animals, like

the progressive ratio procedure of operant reinforcement. In the conflict task, the pins imply the risk that animals have to face and suffer to approach the rewarding stimulus. Hence, we tend to regard the combination of pins and board as a risk or cost.



3. To investigate the influence of stressful events on the ability of inhibitory control in animals, the authors performed acute stress experiment of foot-shock. The authors analyzed the chronic effects of binge-like morphine treatment. Thus, chronic stressful events other than acute stressful events would be more intriguing.

Reply: Thank you for this suggestion. Investigating the influence of chronic stress on inhibitory control under this conflict task will be interesting, for example, the influence of chronic stressful events occurring at puberty on the development of inhibitory control in adulthood.

Minor Concerns:

On several lines in the protocol part, highlights with yellow color are observed. What do these highlights mean?

Reply: The highlights are required by JoVE for showing the video scripts.

Reference.

1. Belin, D., Belin-Rauscent, A., Murray, J. E., & Everitt, B. J. Addiction: failure of control over maladaptive incentive habits. *Curr Opin Neurobiol.* 23(4), 564-572. (2013).
2. Everitt, B. J. Neural and psychological mechanisms underlying compulsive drug

seeking habits and drug memories--indications for novel treatments of addiction. *Eur J Neurosci.* 40(1), 2163-2182. (2014).

3. Giuliano, C., Y. Pena-Oliver, et al. "Evidence for a Long-Lasting Compulsive Alcohol Seeking Phenotype in Rats." *Neuropsychopharmacology.* (2017).

4. Pelloux, Y., B. J. Everitt, et al. "Compulsive drug seeking by rats under punishment: effects of drug taking history." *Psychopharmacology* 194(1): 127-137. (2007).

5. Vanderschuren, L. and B. J. Everitt. "Drug seeking becomes compulsive after prolonged cocaine self-administration." *Science* 305(5686): 1017-1019. (2004).

6. Deroche-Gamonet, V., D. Belin, and P.V. Piazza. *Science.* 305(5686): p. 1014-1017. (2004).

Minor Concerns:

It's not clear to me what the authors mean by inhibitory control. That lies between impulsivity and decision-making. Do the authors believe that this test investigates both aspects or yield towards one of them? Please clarify

Reply: Inhibitory control is the main component of executive function, and it refers to an adaptive ability to suppress inappropriate behavior or unrelated information interference (Miyake et al., 2000).

In the conflict task in this paper, male rats need to make decisions on approaching sexual rewards (estrus female rats) or avoiding aversive stimuli (pins), in another word, inhibiting their appetitive behaviors due to the presence of pins. Hence, the ability of inhibitory control plays a role in this behavioral process and influence the behavioral output.

Impulsivity is a trait of an individual, and also can be a kind of state (e.g., abused drugs can increase impulsivity). Hence, inhibitory control also is involved in impulsivity. The individuals with impairment of inhibitory control usually behave impulsively and/or compulsively.

Under this conflict task (or, this simple decision making task), the individuals displaying maladaptive appetitive behaviors may have high impulsivity/compulsivity.

The authors present their data as "Score". What the score is? Time spent in sec for the rats to surpass the pins? Please clarify

Reply: The score was used to evaluate to what extent the rats were willing to climb or jump over the obstacle in spite of the aversiveness of the pins. The amount of difficulty the male subject conquered every time to approach the stimulus cage was graded and summed up to the total score for each subject.

Reference.

Bai, Y., Belin, D., Zheng, X., Liu, Z., Zhang, Y. Acute stress worsens the deficits in appetitive behaviors for social and sexual stimuli displayed by rats after long-term withdrawal from morphine. *Psychopharmacology*, 234:1693–1702(2017).

Miyake, A., Friedman, N. P., Emerson, M. J., Witzki, A. H., Howerter, A., & Wager, T. D. The unity and diversity of executive functions and their contributions to complex "frontal lobe" tasks: A latent variable analysis. *Cognitive Psychology*, 41, 49–100. (2000).

SPRINGER NATURE LICENSE
TERMS AND CONDITIONS

Nov 02, 2018

This Agreement between Dr. Yunjing Bai ("You") and Springer Nature ("Springer Nature") consists of your license details and the terms and conditions provided by Springer Nature and Copyright Clearance Center.

License Number	4460650676458
License date	Nov 02, 2018
Licensed Content Publisher	Springer Nature
Licensed Content Publication	Psychopharmacology
Licensed Content Title	Acute stress worsens the deficits in appetitive behaviors for social and sexual stimuli displayed by rats after long-term withdrawal from morphine
Licensed Content Author	Yunjing Bai, David Belin, Xigeng Zheng et al
Licensed Content Date	Jan 1, 2017
Licensed Content Volume	234
Licensed Content Issue	11
Type of Use	Journal/Magazine

Requestor type	publisher
Publisher	Not listed below
Format	electronic
Portion	figures/tables/illustrations
Number of figures/tables/illustrations	2
Will you be translating?	no
Circulation/distribution	<501
Author of this Springer Nature content	yes
Title of new article	A Conflict Model of Reward-Seeking Behavior in Male Rats
Lead author	Yunjing Bai
Title of targeted journal	Journal of Visualized Experiments
Publisher	Not listed below
Expected publication date	Dec 2018
Portions	Figures 5A and 5B Dr. Yunjing Bai
Requestor Location	16 Lincui Road, Chaoyang District

Beijing, 100101

China

Attn: Dr. Yunjing Bai

Billing Type

Invoice

Dr. Yunjing Bai

16 Lincui Road, Chaoyang District

Billing Address

Beijing, China 100101

Attn: Dr. Yunjing Bai

Total

0.00 USD

Terms and Conditions

Springer Nature Terms and Conditions for RightsLink Permissions

Springer Nature Customer Service Centre GmbH (the Licensor) hereby grants you a non-exclusive, world-wide licence to reproduce the material and for the purpose and requirements specified in the attached copy of your order form, and for no other use, subject to the conditions below:

1. The Licensor warrants that it has, to the best of its knowledge, the rights to license reuse of this material. However, you should ensure that the material you are requesting is original to the Licensor and does not carry the copyright of another entity (as credited in the published version).

If the credit line on any part of the material you have requested indicates that it was reprinted or adapted with permission from another source, then you should also seek permission from that source to reuse the material.

2. Where **print only** permission has been granted for a fee, separate permission must be obtained for any additional electronic re-use.
3. Permission granted **free of charge** for material in print is also usually granted for any electronic version of that work, provided that the material is incidental to your work as a whole and that the electronic version is essentially equivalent to, or substitutes for, the print version.
4. A licence for 'post on a website' is valid for 12 months from the licence date. This licence does not cover use of full text articles on websites.
5. Where '**reuse in a dissertation/thesis**' has been selected the following terms apply: Print rights of the final author's accepted manuscript (for clarity, NOT the published version) for up to 100 copies, electronic rights for use only on a personal website or institutional repository as defined by the Sherpa guideline (www.sherpa.ac.uk/romeo/).
6. Permission granted for books and journals is granted for the lifetime of the first edition and does not apply to second and subsequent editions (except where the first edition permission was granted free of charge or for signatories to the STM Permissions Guidelines <http://www.stm-assoc.org/copyright-legal-affairs/permissions/permissions-guidelines/>), and does not apply for editions in other languages unless additional translation rights have been granted separately in the licence.
7. Rights for additional components such as custom editions and derivatives require additional permission and may be subject to an additional fee. Please apply to Journalpermissions@springernature.com/bookpermissions@springernature.com for these rights.
8. The Licensor's permission must be acknowledged next to the licensed material in print. In electronic form, this acknowledgement must be visible at the same time as the figures/tables/illustrations or abstract, and must be hyperlinked to the journal/book's homepage. Our required acknowledgement format is in the Appendix below.
9. Use of the material for incidental promotional use, minor editing privileges (this does not include cropping, adapting, omitting material or any other changes that affect the meaning, intention

or moral rights of the author) and copies for the disabled are permitted under this licence.

10. Minor adaptations of single figures (changes of format, colour and style) do not require the Licensor's approval. However, the adaptation should be credited as shown in Appendix below.

Appendix — Acknowledgements:

For Journal Content:

Reprinted by permission from [the Licensor]: [Journal Publisher (e.g. Nature/Springer/Palgrave)] [JOURNAL NAME] [REFERENCE CITATION (Article name, Author(s) Name), [COPYRIGHT] (year of publication)]

For Advance Online Publication papers:

Reprinted by permission from [the Licensor]: [Journal Publisher (e.g. Nature/Springer/Palgrave)] [JOURNAL NAME] [REFERENCE CITATION (Article name, Author(s) Name), [COPYRIGHT] (year of publication), advance online publication, day month year (doi: 10.1038/sj. [JOURNAL ACRONYM].)]

For Adaptations/Translations:

Adapted/Translated by permission from [the Licensor]: [Journal Publisher (e.g. Nature/Springer/Palgrave)] [JOURNAL NAME] [REFERENCE CITATION (Article name, Author(s) Name), [COPYRIGHT] (year of publication)]

Note: For any republication from the British Journal of Cancer, the following credit line style applies:

Reprinted/adapted/translated by permission from [the Licensor]: on behalf of Cancer Research UK: : [Journal Publisher (e.g. Nature/Springer/Palgrave)] [JOURNAL NAME] [REFERENCE CITATION (Article name, Author(s) Name), [COPYRIGHT] (year of publication)]

For Advance Online Publication papers:

Reprinted by permission from The [the Licensor]: on behalf of Cancer Research UK: [Journal Publisher (e.g. Nature/Springer/Palgrave)] [JOURNAL NAME] [REFERENCE CITATION (Article name, Author(s) Name), [COPYRIGHT] (year of publication), advance online publication, day month year (doi: 10.1038/sj. [JOURNAL ACRONYM])]

For Book content:

Reprinted/adapted by permission from [the Licensor]: [Book Publisher (e.g. Palgrave Macmillan, Springer etc) [Book Title] by [Book author(s)] [COPYRIGHT] (year of publication)]

Other Conditions:

Version 1.1

Questions? customercare@copyright.com or +1-855-239-3415 (toll free in the US) or +1-978-646-2777.



