

# Journal of Visualized Experiments

## Incorporation of a survivable liver biopsy procedure in mice to assess non-alcoholic steatohepatitis (NASH) resolution --Manuscript Draft--

Article Type:	Methods Article - JoVE Produced Video
Manuscript Number:	JoVE59130R2
Full Title:	Incorporation of a survivable liver biopsy procedure in mice to assess non-alcoholic steatohepatitis (NASH) resolution
Keywords:	NASH; NAFLD; liver fibrosis; GLP-1; incretin; ballooning
Corresponding Author:	James Trevaskis MedImmune Ltd Gaithersburg, MD UNITED STATES
Corresponding Author's Institution:	MedImmune Ltd
Corresponding Author E-Mail:	james.trevaskis@gilead.com
Order of Authors:	Stephanie Oldham Christian Rivera Michelle L Boland James Trevaskis
Additional Information:	
Question	Response
Please indicate whether this article will be Standard Access or Open Access.	Open Access (US\$4,200)
Please indicate the city, state/province, and country where this article will be filmed. Please do not use abbreviations.	Maryland, USA

**TITLE:**

Incorporation of a Survivable Liver Biopsy Procedure in Mice to Assess Non-Alcoholic Steatohepatitis (NASH) Resolution

**AUTHORS & AFFILIATIONS:**

Stephanie Oldham<sup>1</sup>, Christian Rivera<sup>2</sup>, Michelle L. Boland<sup>1</sup>, James L. Trevaskis<sup>1</sup>

<sup>1</sup>Cardiovascular, Renal and Metabolic Diseases and <sup>2</sup>Laboratory Animal Resources, MedImmune, Gaithersburg, MD, USA

Corresponding Author:

James L. Trevaskis ([jimmytrevaskis@gmail.com](mailto:jimmytrevaskis@gmail.com))

Email Addresses of Co-Authors:

Stephanie Oldham ([oldhams@medimmune.com](mailto:oldhams@medimmune.com))

Christian Rivera ([riverac@medimmune.com](mailto:riverac@medimmune.com))

Michelle L. Boland ([Michelle.beaton@gmail.com](mailto:Michelle.beaton@gmail.com))

**KEYWORDS:**

Liver biopsy, Fibrosis, Steatosis, Non-alcoholic steatohepatitis, NASH, NAFLD

**SHORT ABSTRACT:**

In clinical settings, a liver biopsy is used to assess stages of non-alcoholic steatohepatitis (steatosis, inflammation, hepatocyte ballooning, and fibrosis). Here, we illustrate a survivable liver biopsy in mice which can be used for histological analyses to enable assessment of therapeutic agents in a manner more aligned with clinical trials.

**LONG ABSTRACT:**

Clinical trials assessing therapies for the treatment of non-alcoholic steatohepatitis (NASH) involve a baseline and end of study liver biopsy, and assessment of improvement in disease endpoints, often reflected as a percent of each treatment arm that improved, worsened or remained unchanged. Traditional preclinical rodent studies for putative NASH therapies are often limited by not knowing the level of liver disease/NASH present at the start of therapeutic intervention, instead of randomizing treatment groups on easily measurable endpoints such as body weight, metabolic status or similar. Here, we describe a liver biopsy technique in a diet-induced NASH mouse model, for the assessment of baseline liver disease in order to exclude mice that do not exhibit fibrosis and to equally distribute animals with similar fibrosis between treatment groups. These levels can then be compared to the terminal, post-intervention levels for a truer understanding of *in vivo* pharmacological effects and thus more accurately reflect clinical trial design strategies. The mouse is properly anesthetized and prepared for the surgery using sterile conditions. A small incision is made in the upper abdomen and the left lateral lobe of the liver is exposed. A wedge of the liver is surgically removed, and a similar-sized piece of absorbable gelatin is put in its place to stop any bleeding. The mouse is surgically sutured and stapled closed and will recover back to normal within 1 day. The entire process takes 5-10

minutes per mouse. Here we exemplify the utility of this procedure by leveraging the pre-study biopsy to assess the impact of the glucagon-like peptide-1 (GLP-1) receptor agonist liraglutide on NASH endpoints in mice.

## **INTRODUCTION:**

Non-alcoholic steatohepatitis (NASH) is a progressive liver disease, and a more severe form of nonalcoholic fatty liver disease (NAFLD), that is becoming increasingly prevalent due to its association with obesity and type 2 diabetes. There are no approved therapies for NAFLD/NASH, or approved biomarkers to readily assess the disease progression. NASH is diagnosed histologically by assessing inflammation, excess hepatic lipid (steatosis), hepatocyte ballooning, and fibrosis<sup>1,2,3,4</sup>. In clinical trials, these endpoints are assessed prior to the study in a liver sample collected via biopsy, and from a second liver biopsy after a certain treatment period. Thus, the effectiveness of the test agent is assessed via change in the liver pathology in subjects with previously identified/quantified (i.e., biopsy-proven) NASH that are randomized to treatment groups. These same histologic endpoints are often used in rodent models assessing potential NASH therapeutics in preclinical studies, but only in terminal tissue from euthanized mice and thus without an understanding of the degree of efficacy at baseline and an inability to control for differences in baseline disease state between treatment groups.

Although 25% of adults with NAFLD are presumed to have NASH based on elevated serum aminotransferase levels, there are no alternative definitive methods to confirm NASH other than histological evidence<sup>4</sup>. Noninvasive methods, such as radiologic modalities (ultrasound, computed tomography, and magnetic resonance imaging) have been developed to detect hepatic steatosis, but those methods cannot diagnose NASH or determine the stage of fibrosis. Transient elastography offers a promising non-invasive modality for measuring liver stiffness. It has been shown to be accurate in differentiating fibrosis stages. However, the accuracy decreases with higher body mass index (BMI) and fat tissue.<sup>5</sup> This is problematic due to the majority of NASH patients being obese. Beyond the clinical relevance of these approaches, none of these modalities are utilized in preclinical studies.

To overcome this, the research group of Dr. Jonathan Roth were the first to implement a liver biopsy procedure in the Amylin NASH (AMLN) mouse model of NASH<sup>6-8</sup>. They described the predictive validity of the biopsy with degree of NASH disease and correlation with metabolic disease. Here we describe in detail the liver biopsy procedure in the AMLN model of NASH and its utility in a therapeutic setting, specifically to assess the efficacy of liraglutide.

## **PROTOCOL:**

All *in vivo* experiments were conducted in accordance with the policies of the Institutional Animal Care and Use Committee (IACUC) of MedImmune, LLC and in agreement with the Animal Welfare Act. Male C57BL6J mice were placed onto the high-fat, high-fructose, high-cholesterol AMLN diet. Liver biopsies were performed after 26 weeks on diet, 3 weeks prior to the start of the pharmacological intervention.

89 **1. Obtain and Prepare Surgical Materials**

90  
91 1.1 Autoclave sterile instruments (small pointed-tip scissors, blunt tip forceps, cotton swabs,  
92 gauze squares, 7 mm staples/wound clips and stapler).

93  
94 1.2 Obtain, sterile suture for closing abdominal wall (5-0 coated absorbable suture with a PC-  
95 1 needle is suitable), absorbable gelatin compressed sponge (to be used for hemostatic  
96 purposes), sterile drapes and gloves, iodine-based scrub and 70% ethanol swabs/wipes,  
97 buprenorphine (0.05 mg/kg - 0.1 mg/kg dose per mouse; at least 3 doses per mouse) and surgical  
98 eye ointment/lubrication.

99  
100 1.3 Prepare vaporizer for anesthesia by filling with isoflurane.

101  
102 1.4 Turn on a bead sterilizer, for quick instrument sterilization between animals.

103  
104 1.5 Turn on a warming surface or heating pad, to be used for animal recovery.

105  
106 1.6 Don appropriate personal protective equipment (PPE) (i.e., mask, gown, hair bonnet,  
107 gloves).

108  
109 **2. Pre-Surgical Preparations**

110  
111 2.1 Place the mouse into the induction chamber with 2-3% isoflurane flow to effect.

112  
113 2.2 Observe the mouse until the lack of response to toe-pinch confirms the depth of  
114 anesthesia is appropriate.

115  
116 2.3 Use an eye ointment to prevent dryness of cornea associated with anesthesia.

117  
118 2.4 Administer buprenorphine subcutaneously (0.05 - 0.1 mg/kg).

119  
120 2.5 Shave the surgical site immediately caudal of the xiphoid process, using animal clippers.

121  
122 2.6 Move the mouse to a heated surface (37° C) after shaving the surgical site. Place the  
123 mouse in such a way so that the dorsal surface is downward, and the abdomen is exposed. Insert  
124 the nose of the mouse into the anesthesia nose cone to facilitate delivery of isoflurane at a flow  
125 rate of 2-3%.

126  
127 2.7 Clean the surgical site with alternating swabs of betadine and 70% ethanol (3 times).

128  
129 2.8 Open and set up sterile surgical instruments.

130  
131 2.9 Remove gloves and replace with sterile surgical gloves.

132

### 3. Surgical Procedure

3.1 Make a longitudinal incision with scissors (1-2 cm), immediately caudal of the xiphoid process and slightly to the mouse's left side, in the abdominal skin.

3.2 Blunt dissect the skin away from the abdominal wall using forceps and scissors.

3.3 Expose the abdominal wall and visualize liver underneath.

3.4 Using a sterile scalpel blade make an incision (1-2 cm) in the abdominal wall to visualize the left-lateral lobe (LLL) of the liver.

NOTE: Be consistent throughout the study. Other common lobes of interest are right-medial lobe (RML) and left-medial lobe (LML).

3.5 Externalize the left lateral lobe through the incision.

3.6 Option 1: Lightly massage the abdomen with the thumb and index finger to expose a portion of the LLL.

3.7 Option 2: Place a sterile cotton swab underneath the LLL to gently pull a portion out to be exposed.

3.8 Place a sterile saline-soaked piece of gauze underneath the LLL to allow a sterile and hydrated surface for the liver to lie on.

3.9 Cut a wedge-shaped piece of the liver from the LLL by making two cuts with sterile scissors.

NOTE: The approximate size of the liver being removed is 30-50 mg (<5% of the liver in mice).

3.10 Cut a piece of gelatin sponge similar in size to the wedge piece of liver. Insert the sponge into the cut portion of the liver using forceps.

3.11 Hold the sponge in place with forceps and maintain contact with the liver until it adheres to the surface of the liver and hemostasis is achieved.

3.12 Place the liver biopsy piece into the appropriate tube (i.e. frozen, fixative, etc.).

3.13 Gently place the liver back into the abdominal cavity, taking care to not disturb the sponge.

3.14 Suture the abdominal wall with 5-0 coated absorbable suture starting and ending with a full square knot.

3.15 Close the skin with 7 mm wound clips (or staples).

3.16 Inspect the wound clips to ensure that there is a complete closure of the incision.

3.17 Remove the mouse from the nose cone and place into a clean cage on a heated surface.

3.18 Place instruments into bead sterilizer in between mice for 10-20 s.

#### 4. Post-operative Care

4.1 Monitor the mouse until it regains consciousness and can right itself.

4.2 Record post-operative observations and check the mice daily for dehiscence.

4.3 Administer a second and third dose of buprenorphine (0.05– 0.1 mg/kg) subcutaneously 6-8 h post-surgery and again 24 h post-surgery.

4.4 Remove wound clips at 7-10 days post-surgery.

#### REPRESENTATIVE RESULTS:

For this study, mice were randomized to the treatment groups (n=12/group) based on pre-study biopsy fibrosis grade and body weight. Mice were administered vehicle (PBS) or liraglutide (5 nmol/kg) for 42 days (vehicle or compound administered 10 mL/kg dose volume, subcutaneously, once daily). On day 42, mice were euthanized (via CO<sub>2</sub> inhalation) in the non-fasted state, and liver excised and processed for histology.

Biopsy and terminal liver pieces were fixed overnight in 10% formalin, then paraffin embedded and processed for hematoxylin and eosin, and Sirius Red, staining via standard protocols<sup>9</sup>. Tissue sections were assessed in a blinded fashion by a pathologist according to the NASH Activity Scoring (NAS) system<sup>1,2</sup>. The NAS reflects the degree of disease for steatosis, lobular inflammation and hepatocyte ballooning (each parameter given a score of 0-3) as previously described<sup>9</sup>.

Incorporating a liver biopsy into the design of this study allowed for a baseline (pre-biopsy) fibrosis score. A total of 118 mice were biopsied after 29 weeks of NASH diet and liver fibrosis and steatosis were scored for each biopsy (**Figure 1**). Of these 118 mice, 49 mice were excluded based on low fibrosis (score of 0), high fibrosis (score of 4, which exhibited abnormal pathology), and abnormal weight loss or wound healing. These exclusion criteria allowed for 69 mice left to assign into study groups and look for improvements in NASH phenotype after treatment (**Figure 1**).

Mice were treated with vehicle or the GLP-1R agonist liraglutide (5 nmol/kg) for 6 weeks. In the vehicle-treated group, 1 mouse exhibited worsened fibrosis and 4 mice showed worsened NAS

score (**Figure 2A-B**). Liraglutide treatment was associated with an overall improvement of fibrosis (**Figure 2C**), with 17% of the treatment group improving and 83% remaining unchanged. Similarly, liraglutide treatment improved the overall NAS score (**Figure 2D**), with 66% of the group having improved NAS score and 33% remained unchanged.

Additionally, liraglutide treatment improved inflammation, with 75% of the group having a lower inflammation score and 25% remained unchanged (Figure 3B). Vehicle treatment worsened inflammation, with 17% of the group having a higher inflammation score and 83% remained unchanged (**Figure 3A**). Steatosis scoring remained unchanged from baseline to end of the study in both the vehicle- and liraglutide-treated groups (**Figure 3A, B**). Pre- vs. post-biopsy comparisons for individual mice on inflammation and ballooning parameters are also shown (**Figure 3C-F**).

#### FIGURE AND TABLE LEGENDS:

**Figure 1. Pre-screening liver biopsy fibrosis and NAS score.** (A) Representation of all 118 mice that were screened for fibrosis, via liver biopsy. (B) and (C) show the baseline fibrosis and NAS score, respectively, after eligible mice were sorted into study groups.

**Figure 2. Fibrosis and NAS score, pre-biopsy and post-intervention.** Percent responder analysis for the vehicle (A, C) or liraglutide-treated (B, D) mice, as measured from baseline liver biopsy to end of study liver sample for fibrosis stage (A, B) and NAS (C, D). For each group, the change from the pre-study to post-study biopsy is indicated by a line. The points at each scoring step is slightly shifted to allow visual separation of the animals, this is only for visualization purposes and does not reflect any difference in score.

**Figure 3. Steatosis, inflammation and ballooning, pre-biopsy and post-intervention.** Percent responder analysis for the vehicle (A, C, E) or liraglutide-treated (B, D, F) mice, as measured from baseline liver biopsy to end of study liver sample for steatosis score (A, B), inflammation (C, D) and ballooning (E, F). For each group, the change from the pre-study to post-study biopsy is indicated by a line. The points at each scoring step is slightly shifted to allow visual separation of the animals, this is only for visualization purposes and does not reflect any difference in score.

#### DISCUSSION:

Here we describe in detail the mouse liver biopsy procedure first described by Clapper *et al.*<sup>10</sup>, and exemplify its utility in a mouse model of NASH, similar to the previous reports<sup>6,9</sup>. The liver biopsy procedure is a valuable tool for assessing NASH phenotype pre- and post-treatment, in a manner similar to that performed in clinical therapeutic trials. The biopsy allows for direct comparison for each subject, i.e. the same mice can be used for both time points. We also demonstrate its translational potential. In a clinical trial in biopsy-proven NASH subjects, liraglutide elicited a 39% response rate (patients with improvement) in NAS, whereas in our study we observed a 66% responder rate for improved NAS. Furthermore, 26% of patients had

improved fibrosis score with 9% worsening, versus 14% and 36% in the placebo arm, respectively<sup>11</sup>. In our study, we observed a 17% improvement rate with liraglutide treatment. These comparisons highlight the power of baseline liver biopsy and confirm potential translational understanding, at least for this class of therapeutic.

It is critical to harvest a large enough piece of liver tissue during the biopsy procedure to properly analyze the histological features, but also not too large of a piece of liver to compromise the function of the liver. We observed a zero-mortality rate with this surgery, and the animals appeared fully recovered within 1 day with the resumption of normal eating behavior. Thus, the time between biopsy and initiation of the intervention study is limited not by animal recovery but likely by the time taken for sample processing, analysis, and subsequent randomization.

Utilizing the liver biopsy procedure as a method of confirmation of fibrosis before intervention helped reduce variability in our study, allowing us to exclude mice that did not fully develop some degree of hepatic fibrosis as a result of the AMLN NASH-inducing diet. Furthermore, it enhanced our ability to better understand the impact of possible NASH-improving interventions, as opposed to only having a terminal liver sample and NASH score. Until new non-invasive techniques are further explored and widely accepted, the liver biopsy is the only proven way to determine NASH.

#### **ACKNOWLEDGMENTS:**

The authors gratefully acknowledge the assistance of Sally Lee and Holly Koelkebeck for expertise in tissue processing and immunohistochemistry. The authors also thank Donna Goldsteen and the Laboratory Animal Resources staff (MedImmune, Gaithersburg, MD) for their assistance with technical procedures and animal husbandry and care.

#### **DISCLOSURES:**

S.O. and C.R. are current employees and/or stockholders of MedImmune/AstraZeneca. JLT was an employee and stockholder of MedImmune/AstraZeneca at the time these experiments were conducted.

#### **REFERENCES:**

- 1 Brunt, E. M. *et al.* Nonalcoholic fatty liver disease (NAFLD) activity score and the histopathologic diagnosis in NAFLD: distinct clinicopathologic meanings. *Hepatology*. **53** (3), 810-820, doi:10.1002/hep.24127, (2011).
- 2 Brunt, E. M. Pathology of nonalcoholic fatty liver disease. *Nature Reviews Gastroenterology and Hepatology*. **7** (4), 195-203, doi:10.1038/nrgastro.2010.21, (2010).
- 3 Kleiner, D. E. *et al.* Design and validation of a histological scoring system for nonalcoholic fatty liver disease. *Hepatology*. **41** (6), 1313-1321, doi:10.1002/hep.20701, (2005).
- 4 Diehl, A. M. & Day, C. Cause, Pathogenesis, and Treatment of Nonalcoholic Steatohepatitis. *New England Journal of Medicine*. **377** (21), 2063-2072, doi:10.1056/NEJMra1503519, (2017).
- 5 Golabi, P. *et al.* Current complications and challenges in nonalcoholic steatohepatitis



screening and diagnosis. *Expert Reviews of Gastroenterology and Hepatology*. **10** (1), 63-71, doi:10.1586/17474124.2016.1099433, (2016).

6 Roth, N. C. *et al.* Prediction of histologic alcoholic hepatitis based on clinical presentation limits the need for liver biopsy. *Hepatology Communications*. **1** (10), 1070-1084, doi:10.1002/hep4.1119, (2017).

7 Kristiansen, M. N. *et al.* Obese diet-induced mouse models of nonalcoholic steatohepatitis-tracking disease by liver biopsy. *World Journal of Hepatology*. **8** (16), 673-684, doi:10.4254/wjh.v8.i16.673, (2016).

8 Trevaskis, J. L. *et al.* Glucagon-like peptide-1 receptor agonism improves metabolic, biochemical, and histopathological indices of nonalcoholic steatohepatitis in mice. *American Journal of Physiology Gastrointestinal and Liver Physiology*. **302** (8), G762-772, doi:10.1152/ajpgi.00476.2011, (2012).

9 Tolbol, K. S. *et al.* Metabolic and hepatic effects of liraglutide, obeticholic acid and elafibranor in diet-induced obese mouse models of biopsy-confirmed nonalcoholic steatohepatitis. *World Journal of Gastroenterology*. **24** (2), 179-194, doi:10.3748/wjg.v24.i2.179, (2018).

10 Clapper, J. R. *et al.* Diet-induced mouse model of fatty liver disease and nonalcoholic steatohepatitis reflecting clinical disease progression and methods of assessment. *American Journal of Physiology Gastrointestinal and Liver Physiology*. **305** (7), G483-495, doi:10.1152/ajpgi.00079.2013, (2013).

11 Armstrong, M. J. *et al.* Liraglutide safety and efficacy in patients with non-alcoholic steatohepatitis (LEAN): a multicentre, double-blind, randomised, placebo-controlled phase 2 study. *Lancet*. **387** (10019), 679-690, doi:10.1016/S0140-6736(15)00803-X, (2016).

Figure 1

[Click here to access/download;Figure;Figure 1.pdf](#) 

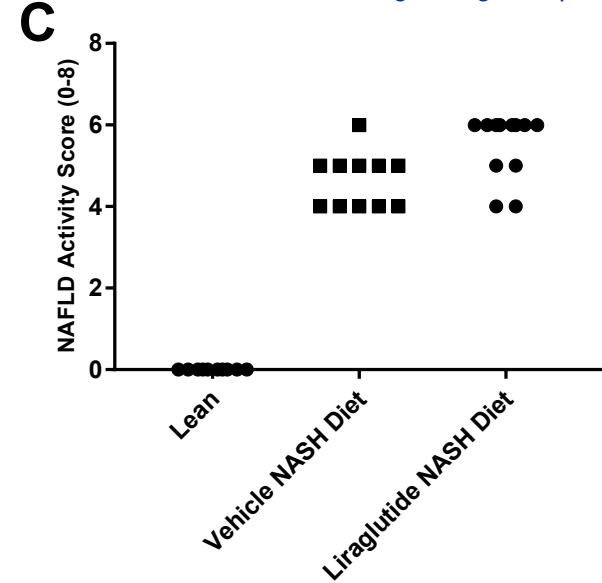
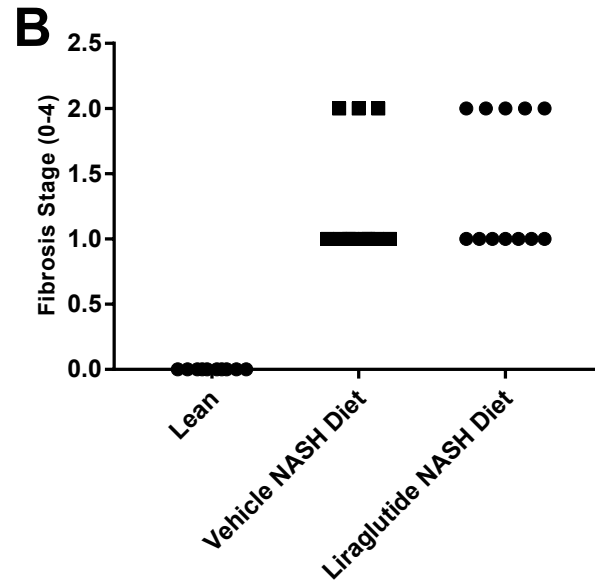
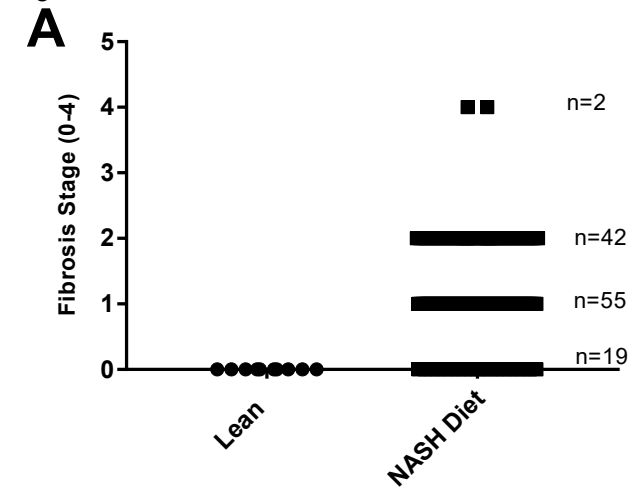
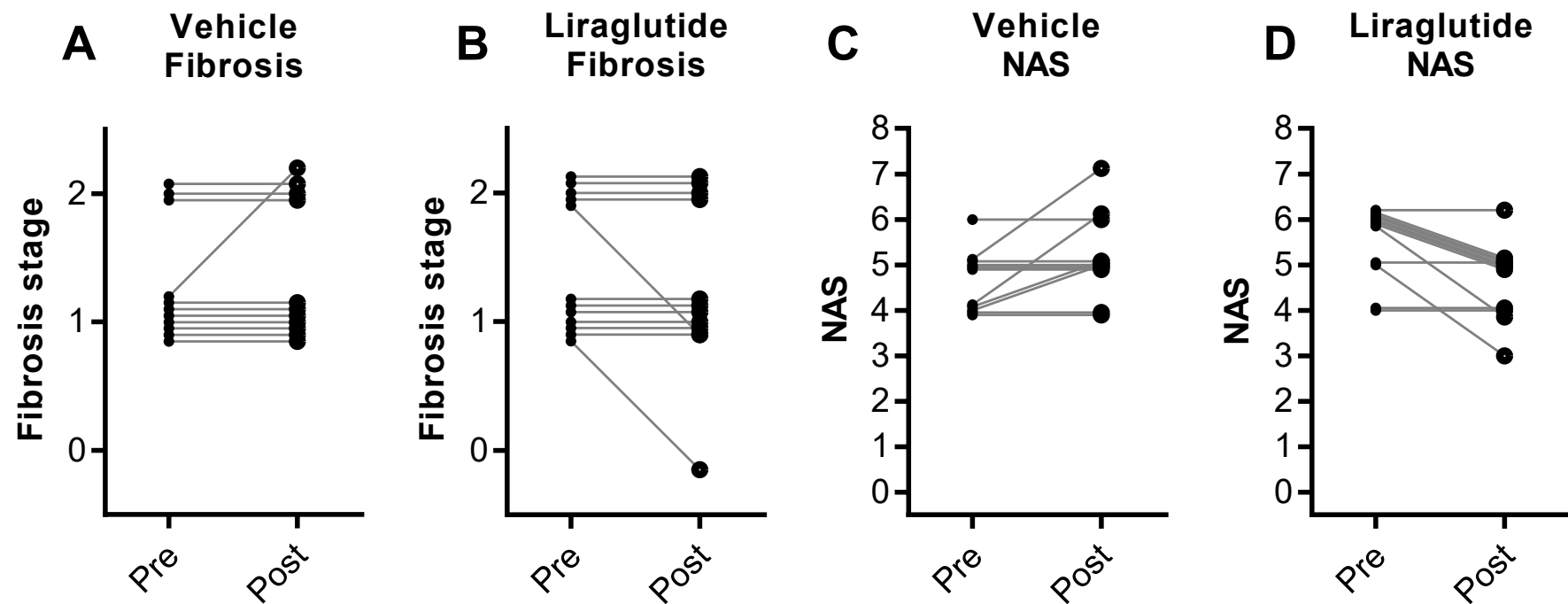
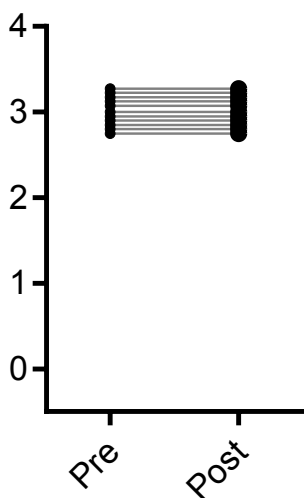
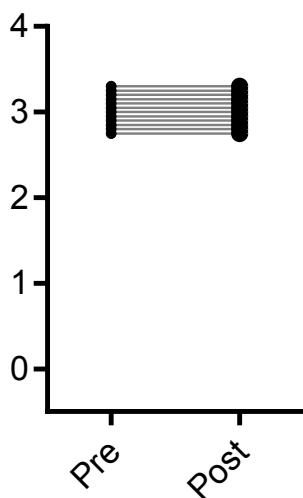
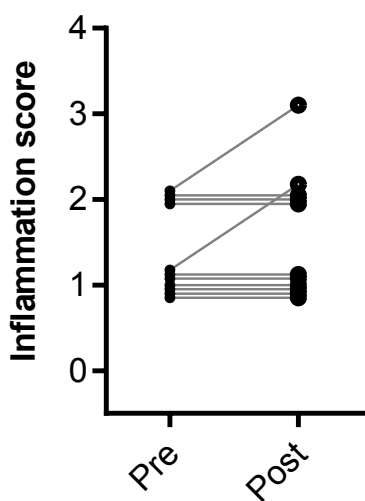
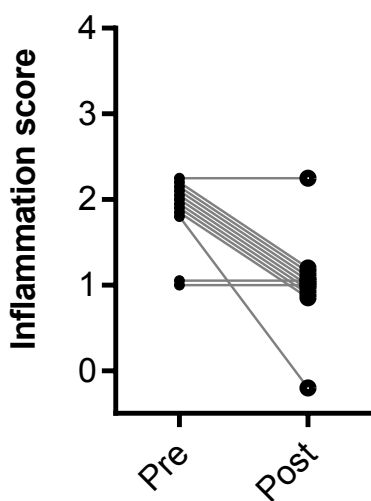
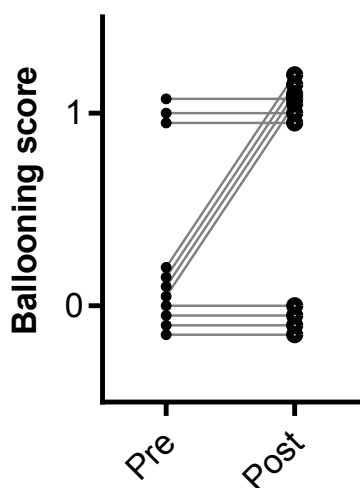
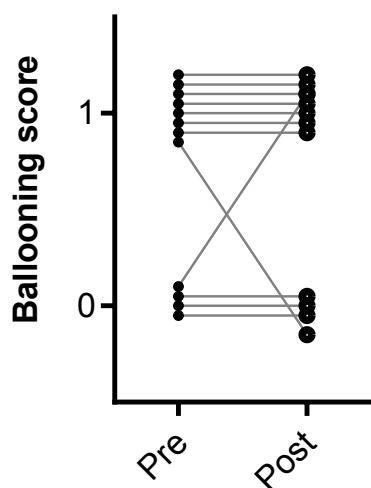


Figure 2

[Click here to access/download;Figure;Figure 2.pdf](#)



**A****Vehicle  
Steatosis****B****Liraglutide  
Steatosis****C****Vehicle  
Inflammation****D****Liraglutide  
Inflammation****E****Vehicle  
Ballooning****F****Liraglutide  
Ballooning**

Name of Material/ Equipment	Company	Catalog Number	Comments/Description
Isoflurane	Henry Schein	29405	
5-0 suture	Ethicon	J834G	
7mm Wound Clips	Reflex	203-1000	
Absorbable gelatin sponge	Pfizer	09-0353-01	Compressed, Any Size
Alcohol Prep Pad	VWR	75856-902	
Animal Clippers	Oster	78005010002	Size 40 Blade
Artificial Tears	Henry Schein	048272	Tube
Buprenorphine (Buprenex)	Reckitt Benckiser	NDC 12496-0757-5	
Iodine Prep Pads	Nice Pak Products	C12400	
Sterile Drapes	Stoelting	50981	
Surgical Gloves	Medline	54720	



1 Alewife Center #200  
Cambridge, MA 02140  
tel. 617.945.9051  
[www.jove.com](http://www.jove.com)

## ARTICLE AND VIDEO LICENSE AGREEMENT

Title of Article:

Incorporation of a survivable liver biopsy procedure in mice to assess non-alcoholic steatohepatitis (NASH) resolution

Author(s):

Oldham S, Rivera C, Boland ML, Feigh M, Veidal SS, Trevaskis JL

Item 1 (check one box): The Author elects to have the Materials be made available (as described at <http://www.jove.com/author>) via: ☐ Standard Access ☒ Open Access

Item 2 (check one box):

- ☒ The Author is NOT a United States government employee.
- ☐ The Author is a United States government employee and the Materials were prepared in the course of his or her duties as a United States government employee.
- ☐ The Author is a United States government employee but the Materials were NOT prepared in the course of his or her duties as a United States government employee.

### ARTICLE AND VIDEO LICENSE AGREEMENT

1. **Defined Terms.** As used in this Article and Video License Agreement, the following terms shall have the following meanings: “**Agreement**” means this Article and Video License Agreement; “**Article**” means the article specified on the last page of this Agreement, including any associated materials such as texts, figures, tables, artwork, abstracts, or summaries contained therein; “**Author**” means the author who is a signatory to this Agreement; “**Collective Work**” means a work, such as a periodical issue, anthology or encyclopedia, in which the Materials in their entirety in unmodified form, along with a number of other contributions, constituting separate and independent works in themselves, are assembled into a collective whole; “**CRC License**” means the Creative Commons Attribution-Non Commercial-No Derivs 3.0 Unported Agreement, the terms and conditions of which can be found at: <http://creativecommons.org/licenses/by-nc-nd/3.0/legalcode>; “**Derivative Work**” means a work based upon the Materials or upon the Materials and other pre-existing works, such as a translation, musical arrangement, dramatization, fictionalization, motion picture version, sound recording, art reproduction, abridgment, condensation, or any other form in which the Materials may be recast, transformed, or adapted; “**Institution**” means the institution, listed on the last page of this Agreement, by which the Author was employed at the time of the creation of the Materials; “**JoVE**” means MyJoVE Corporation, a Massachusetts corporation and the publisher of *The Journal of Visualized Experiments*; “**Materials**” means the Article and / or the Video; “**Parties**” means the Author and JoVE; “**Video**” means any video(s) made by the Author, alone or in conjunction with any other parties, or by JoVE or its affiliates or agents, individually or in collaboration with the Author or any other parties, incorporating all or any portion of the Article, and in which the Author may or may not appear.

2. **Background.** The Author, who is the author of the Article, in order to ensure the dissemination and protection of the Article, desires to have the JoVE publish the Article and create and transmit videos based on the Article. In furtherance of such goals, the Parties desire to memorialize in this Agreement the respective rights of each Party in and to the Article and the Video.

3. **Grant of Rights in Article.** In consideration of JoVE agreeing to publish the Article, the Author hereby grants to JoVE, subject to Sections 4 and 7 below, the exclusive, royalty-free, perpetual (for the full term of copyright in the Article, including any extensions thereto) license (a) to publish, reproduce, distribute, display and store the Article in all forms, formats and media whether now known or hereafter developed (including without limitation in print, digital and electronic form) throughout the world, (b) to translate the Article into other languages, create adaptations, summaries or extracts of the Article or other Derivative Works (including, without limitation, the Video) or Collective Works based on all or any portion of the Article and exercise all of the rights set forth in (a) above in such translations, adaptations, summaries, extracts, Derivative Works or Collective Works and (c) to license others to do any or all of the above. The foregoing rights may be exercised in all media and formats, whether now known or hereafter devised, and include the right to make such modifications as are technically necessary to exercise the rights in other media and formats. If the “Open Access” box has been checked in Item 1 above, JoVE and the Author hereby grant to the public all such rights in the Article as provided in, but subject to all limitations and requirements set forth in, the CRC License.

## ARTICLE AND VIDEO LICENSE AGREEMENT

4. **Retention of Rights in Article.** Notwithstanding the exclusive license granted to JoVE in **Section 3** above, the Author shall, with respect to the Article, retain the non-exclusive right to use all or part of the Article for the non-commercial purpose of giving lectures, presentations or teaching classes, and to post a copy of the Article on the Institution's website or the Author's personal website, in each case provided that a link to the Article on the JoVE website is provided and notice of JoVE's copyright in the Article is included. All non-copyright intellectual property rights in and to the Article, such as patent rights, shall remain with the Author.

5. **Grant of Rights in Video – Standard Access.** This **Section 5** applies if the "Standard Access" box has been checked in **Item 1** above or if no box has been checked in **Item 1** above. In consideration of JoVE agreeing to produce, display or otherwise assist with the Video, the Author hereby acknowledges and agrees that, Subject to **Section 7** below, JoVE is and shall be the sole and exclusive owner of all rights of any nature, including, without limitation, all copyrights, in and to the Video. To the extent that, by law, the Author is deemed, now or at any time in the future, to have any rights of any nature in or to the Video, the Author hereby disclaims all such rights and transfers all such rights to JoVE.

6. **Grant of Rights in Video – Open Access.** This **Section 6** applies only if the "Open Access" box has been checked in **Item 1** above. In consideration of JoVE agreeing to produce, display or otherwise assist with the Video, the Author hereby grants to JoVE, subject to **Section 7** below, the exclusive, royalty-free, perpetual (for the full term of copyright in the Article, including any extensions thereto) license (a) to publish, reproduce, distribute, display and store the Video in all forms, formats and media whether now known or hereafter developed (including without limitation in print, digital and electronic form) throughout the world, (b) to translate the Video into other languages, create adaptations, summaries or extracts of the Video or other Derivative Works or Collective Works based on all or any portion of the Video and exercise all of the rights set forth in (a) above in such translations, adaptations, summaries, extracts, Derivative Works or Collective Works and (c) to license others to do any or all of the above. The foregoing rights may be exercised in all media and formats, whether now known or hereafter devised, and include the right to make such modifications as are technically necessary to exercise the rights in other media and formats. For any Video to which this Section 6 is applicable, JoVE and the Author hereby grant to the public all such rights in the Video as provided in, but subject to all limitations and requirements set forth in, the CRC License.

7. **Government Employees.** If the Author is a United States government employee and the Article was prepared in the course of his or her duties as a United States government employee, as indicated in **Item 2** above, and any of the licenses or grants granted by the Author hereunder exceed the scope of the 17 U.S.C. 403, then the rights granted hereunder shall be limited to the maximum rights permitted under such

statute. In such case, all provisions contained herein that are not in conflict with such statute shall remain in full force and effect, and all provisions contained herein that do so conflict shall be deemed to be amended so as to provide to JoVE the maximum rights permissible within such statute.

8. **Likeness, Privacy, Personality.** The Author hereby grants JoVE the right to use the Author's name, voice, likeness, picture, photograph, image, biography and performance in any way, commercial or otherwise, in connection with the Materials and the sale, promotion and distribution thereof. The Author hereby waives any and all rights he or she may have, relating to his or her appearance in the Video or otherwise relating to the Materials, under all applicable privacy, likeness, personality or similar laws.

9. **Author Warranties.** The Author represents and warrants that the Article is original, that it has not been published, that the copyright interest is owned by the Author (or, if more than one author is listed at the beginning of this Agreement, by such authors collectively) and has not been assigned, licensed, or otherwise transferred to any other party. The Author represents and warrants that the author(s) listed at the top of this Agreement are the only authors of the Materials. If more than one author is listed at the top of this Agreement and if any such author has not entered into a separate Article and Video License Agreement with JoVE relating to the Materials, the Author represents and warrants that the Author has been authorized by each of the other such authors to execute this Agreement on his or her behalf and to bind him or her with respect to the terms of this Agreement as if each of them had been a party hereto as an Author. The Author warrants that the use, reproduction, distribution, public or private performance or display, and/or modification of all or any portion of the Materials does not and will not violate, infringe and/or misappropriate the patent, trademark, intellectual property or other rights of any third party. The Author represents and warrants that it has and will continue to comply with all government, institutional and other regulations, including, without limitation all institutional, laboratory, hospital, ethical, human and animal treatment, privacy, and all other rules, regulations, laws, procedures or guidelines, applicable to the Materials, and that all research involving human and animal subjects has been approved by the Author's relevant institutional review board.

10. **JoVE Discretion.** If the Author requests the assistance of JoVE in producing the Video in the Author's facility, the Author shall ensure that the presence of JoVE employees, agents or independent contractors is in accordance with the relevant regulations of the Author's institution. If more than one author is listed at the beginning of this Agreement, JoVE may, in its sole discretion, elect not take any action with respect to the Article until such time as it has received complete, executed Article and Video License Agreements from each such author. JoVE reserves the right, in its absolute and sole discretion and without giving any reason therefore, to accept or decline any work submitted to JoVE. JoVE and its employees, agents and independent contractors shall have

## ARTICLE AND VIDEO LICENSE AGREEMENT

full, unfettered access to the facilities of the Author or of the Author's institution as necessary to make the Video, whether actually published or not. JoVE has sole discretion as to the method of making and publishing the Materials, including, without limitation, to all decisions regarding editing, lighting, filming, timing of publication, if any, length, quality, content and the like.

**11. Indemnification.** The Author agrees to indemnify JoVE and/or its successors and assigns from and against any and all claims, costs, and expenses, including attorney's fees, arising out of any breach of any warranty or other representations contained herein. The Author further agrees to indemnify and hold harmless JoVE from and against any and all claims, costs, and expenses, including attorney's fees, resulting from the breach by the Author of any representation or warranty contained herein or from allegations or instances of violation of intellectual property rights, damage to the Author's or the Author's institution's facilities, fraud, libel, defamation, research, equipment, experiments, property damage, personal injury, violations of institutional, laboratory, hospital, ethical, human and animal treatment, privacy or other rules, regulations, laws, procedures or guidelines, liabilities and other losses or damages related in any way to the submission of work to JoVE, making of videos by JoVE, or publication in JoVE or elsewhere by JoVE. The Author shall be responsible for, and shall hold JoVE harmless from, damages caused by lack of sterilization, lack of cleanliness or by contamination due to the making of a video by JoVE its employees, agents or independent contractors. All sterilization, cleanliness or decontamination procedures shall be solely the responsibility of the Author and shall be undertaken at the Author's

expense. All indemnifications provided herein shall include JoVE's attorney's fees and costs related to said losses or damages. Such indemnification and holding harmless shall include such losses or damages incurred by, or in connection with, acts or omissions of JoVE, its employees, agents or independent contractors.

**12. Fees.** To cover the cost incurred for publication, JoVE must receive payment before production and publication the Materials. Payment is due in 21 days of invoice. Should the Materials not be published due to an editorial or production decision, these funds will be returned to the Author. Withdrawal by the Author of any submitted Materials after final peer review approval will result in a US\$1,200 fee to cover pre-production expenses incurred by JoVE. If payment is not received by the completion of filming, production and publication of the Materials will be suspended until payment is received.

**13. Transfer, Governing Law.** This Agreement may be assigned by JoVE and shall inure to the benefits of any of JoVE's successors and assignees. This Agreement shall be governed and construed by the internal laws of the Commonwealth of Massachusetts without giving effect to any conflict of law provision thereunder. This Agreement may be executed in counterparts, each of which shall be deemed an original, but all of which together shall be deemed to be one and the same agreement. A signed copy of this Agreement delivered by facsimile, e-mail or other means of electronic transmission shall be deemed to have the same legal effect as delivery of an original signed copy of this Agreement.

A signed copy of this document must be sent with all new submissions. Only one Agreement required per submission.

### CORRESPONDING AUTHOR:

Name:

James L. Trevaskis

Department:

Cardiovascular, Renal and Metabolic Diseases


Institution:

MedImmune

Article Title:

Incorporation of a survivable liver biopsy procedure in mice to assess non-alcoholic steatohepatitis (NASH) resolution

Signature:



Date:

September 19, 2018

Please submit a signed and dated copy of this license by one of the following three methods:

- 1) Upload a scanned copy of the document as a pdf on the JoVE submission site;
- 2) Fax the document to +1.866.381.2236;
- 3) Mail the document to JoVE / Attn: JoVE Editorial / 1 Alewife Center #200 / Cambridge, MA 02139

For questions, please email [submissions@jove.com](mailto:submissions@jove.com) or call +1.617.945.9051







January 3<sup>rd</sup>, 2019

Dr. Vineeta Bajaj  
Review Editor

We thank the editor for their comments to enhance our paper and the description of the procedure. Several changes have been performed:

- Greater clarity in the writing, and all comments by the editor have been addressed.
- Expanded list of materials.
- Additional steatosis data (no longer described as data not shown), presented in a revised Figure 3, and subsequent necessary edits to the figure legend.
- These figures/data have not been previously published or presented elsewhere, thus no copyright issues should encroach.

We hope that this version is satisfactory and we can proceed to the next stage. A clean version of the paper is submitted for your review.

Thanks,

James L. Trevaskis and Stephanie Oldham