

# Journal of Visualized Experiments

## ATAC-seq Assay with Low Mitochondrial DNA Contamination from Primary Human CD4+ T Lymphocytes --Manuscript Draft--

Article Type:	Invited Methods Article - JoVE Produced Video
Manuscript Number:	JoVE59120R2
Full Title:	ATAC-seq Assay with Low Mitochondrial DNA Contamination from Primary Human CD4+ T Lymphocytes
Keywords:	Epigenomics; ATAC-seq; Tn5; CD4+ lymphocytes; nuclei; mitochondrial DNA contamination
Corresponding Author:	Christine Cheng Boston University Boston, MA UNITED STATES
Corresponding Author's Institution:	Boston University
Corresponding Author E-Mail:	chcheng@bu.edu
Order of Authors:	Hannah D Rickner Simon Niu Christine Cheng
Additional Information:	
Question	Response
Please indicate whether this article will be Standard Access or Open Access.	Standard Access (US\$2,400)
Please indicate the <b>city, state/province, and country</b> where this article will be <b>filmed</b> . Please do not use abbreviations.	Boston, MA, USA



Jaydev Upponi, Ph.D.  
Science Editor  
Journal of Visualized Experiments  
1 Alewife Center, Suite 200  
Cambridge, MA 02140  
USA

September 18<sup>th</sup>, 2018

Dear Dr. Upponi,

Enclosed please find our manuscript entitled "An Improved ATAC-seq Protocol with Low Mitochondrial DNA Contamination to Map Genome-Wide Chromatin Architecture in Primary Human CD4<sup>+</sup> T Lymphocytes", which we submit for publication to the Journal of Visualized Experiments. This submission follows our pre-submission correspondence. Below we provide a summary of our protocol, highlighting its novelty and implications.

ATAC-seq is a powerful tool in the field of epigenetics, a high throughput and relatively simple method to identify open and accessible chromatin. While ATAC-seq is widely used, current protocols are challenged by contaminating mitochondrial DNA reads that can comprise as much as 50% of sequencing reads. In our manuscript we present an improved ATAC-seq protocol that introduces a modified nuclei lysis buffer that is demonstrated to reduce mitochondrial DNA reads from an average of 50% to 3%. This allows for a large decrease in sequencing costs and higher quality data production from the ATAC-seq pipeline.

The main innovations of our work are:

**The efficient isolation, freezing and activation of human primary CD4<sup>+</sup> lymphocytes from patient whole blood, allowing for the collection of desired material at different times but simultaneous library construction and sequencing.** This provides researchers with the flexibility to collect samples based on availability and research needs, while still avoiding batch bias in Tn5 transposase activity, library preparation, and sequencing.

**An improved nuclei lysis buffer that minimizes contaminating mitochondrial DNA reads, allowing for a decrease in sequencing costs.** A reduction from an average of 50% mitochondrial DNA reads to 3%, allowing for a 50% reduction in sequencing costs.



Given the widespread use of ATAC-seq, our improved protocol will benefit a large range of research. This improved ATAC-seq protocol has been validated in various cell types, and has potential promises to improve single cell ATAC-seq library quality as well. The protocol will benefit from visual representation of CD4+ lymphocyte handling and nuclei lysis buffer preparation, making it of interest to the Journal of Visualized Experiments community. Thank you for your consideration.

Sincerely,

Christine S Cheng

A handwritten signature in black ink, appearing to read "Christine S Cheng", with a stylized, flowing line.

Assistant Professor  
Department of Biology  
Boston University

**TITLE:**

ATAC-seq Assay with Low Mitochondrial DNA Contamination from Primary Human CD4+ T Lymphocytes

**AUTHORS AND AFFILIATIONS:**

Hannah D Rickner<sup>1</sup>, Sheng-Yong Niu<sup>1,2</sup>, Christine S Cheng<sup>1,3</sup>

<sup>1</sup>Department of Biology, Boston University, Boston, MA, USA

<sup>2</sup>Department of Computer Science and Engineering, University of California San Diego, La Jolla, CA, USA

<sup>3</sup>Bioinformatics Program, Boston University, Boston, MA, USA

**Corresponding Author:**

Christine S Cheng (chcheng@bu.edu)

**Email Addresses of Co-authors:**

Hannah D Rickner (hrickner@bu.edu)

Sheng-Yong Niu (sniu@ucsd.edu)

**KEYWORDS:**

Epigenomics, ATAC-seq, Tn5, CD4+ lymphocytes, nuclei, mitochondrial DNA contamination

**SUMMARY:**

Here, we present a protocol to perform an assay for transposase-accessible chromatin sequencing (ATAC-seq) on activated CD4+ human lymphocytes. The protocol has been modified to minimize contaminating mitochondrial DNA reads from 50% to 3% through the introduction of a new lysis buffer.

**ABSTRACT:**

ATAC-seq has become a widely used methodology in the study of epigenetics due to its rapid and simple approach to mapping genome-wide accessible chromatin. In this paper we present an improved ATAC-seq protocol that reduces contaminating mitochondrial DNA reads. While previous ATAC-seq protocols have struggled with an average of 50% contaminating mitochondrial DNA reads, the new lysis buffer introduced in this protocol reduces mitochondrial DNA contamination to an average of 3%. This improved ATAC-seq protocol allows for a near 50% reduction in the sequencing cost. We demonstrate how these high-quality ATAC-seq libraries can be prepared from activated CD4+ lymphocytes, providing step-by-step instructions from CD4+ lymphocyte isolation from whole blood through data analysis. This improved ATAC-seq protocol has been validated in a wide range of cell types and will be of immediate use to researchers studying chromatin accessibility.

**INTRODUCTION:**

The assay for transposase-accessible chromatin sequencing (ATAC-seq) has rapidly become the leading method for interrogating chromatin architecture. ATAC-seq can identify regions of

accessible chromatin through the process of tagmentation, the fragmenting and tagging of DNA by the same enzyme, to produce libraries with which sequencing can determine chromatin accessibility across an entire genome. This tagmentation process is mediated by the hyperactive Tn5 transposase, which only cuts open regions of chromatin due to nucleosomal steric hindrance. As it cuts, the Tn5 transposase also inserts sequencing adapters that allow for rapid library construction by PCR and next-generation sequencing of genome-wide accessible chromatin<sup>1,2</sup>.

ATAC-seq has become the preferred method to determine regions of chromatin accessibility due to the relatively simple and fast protocol, quality and range of information that can be determined from its results, and small amount of starting material required. Compared to DNase-seq<sup>3</sup> (which also measures genome-wide chromatin accessibility), MNase-seq<sup>4</sup> (which determines nucleosome positions in open genome regions), and the formaldehyde-mediated FAIRE-seq<sup>5</sup>, ATAC-seq is faster, cheaper, and more reproducible<sup>1</sup>. It is also more sensitive, working with starting material of as few as 500 nuclei, compared to the 50 million nuclei required for DNase-seq<sup>3</sup>. ATAC-seq also has the ability to provide more information about chromatin architecture than other methods, including regions of transcription factor binding, nucleosome positioning, and open chromatin regions<sup>1</sup>. Effective, single-cell ATAC-seq protocols have been validated, providing information on chromatin architecture at the single-cell level<sup>6,7</sup>.

ATAC-seq has been used to characterize chromatin architecture across a wide spectrum of research and cells types, including plants<sup>8</sup>, humans<sup>9</sup>, and many other organisms. It has also been critical in identifying epigenetic regulation of disease states<sup>7</sup>. However, the most widely used ATAC-seq protocol includes the major drawback of contamination sequencing reads from mitochondrial DNA. In some data sets, this contamination level can be as high as 60% of sequencing results<sup>1</sup>. Here we present an improved ATAC-seq protocol that reduces the mitochondrial DNA contamination rate to just 3%, allowing reduction of around 50% in sequencing costs<sup>10</sup>. This is made possible by a streamlined process of CD4+ lymphocyte isolation and activation and an improved lysis buffer that is critical in minimizing mitochondrial DNA contamination.

This improved ATAC-seq protocol has been validated with a wide range of primary cells, including human primary peripheral blood mononuclear cells (PBMCs)<sup>10</sup>, human primary monocytes, and mouse dendritic cells (unpublished). It has also been used successfully to interrogate melanoma cell lines in a clustered regularly interspaced short palindromic repeats (CRISPR) screen of non-coding elements<sup>11</sup>. Additionally, the data analysis package described in this protocol and provided on GitHub provides new and experienced researchers with tools to analyze ATAC-seq data. ATAC-seq is the most effective assay to map chromatin accessibility across an entire genome, and modifications to the existing protocol that are introduced here will allow researchers to produce high-quality data with low mitochondrial DNA contamination, reducing sequencing costs and improving ATAC-seq throughput.

## **PROTOCOL:**

This improved protocol provides step-by-step instructions for performing ATAC-seq of CD4+ lymphocytes, from the starting material of whole blood through data analysis (**Figure 1**).

## **1. Isolation of CD4+ T cells from whole blood**

NOTE: The starting material for this protocol is 15 mL of fresh whole blood collected using standard procedures, allowing the source of the starting material to be selected based on research requirements. Scale the protocol as needed. Pre-warm phosphate buffered saline (PBS) + 2% fetal calf serum (FCS) to room temperature (RT) and adjust the centrifuge to RT before starting the CD4+ T cell enrichment procedure.

1.1 Add 750  $\mu$ L of human CD4+ T cell enrichment cocktail to 15 mL of whole blood in a 50 mL conical tube and mix gently by inversion. Incubate at RT for 20 min. When incubation is complete, add 15 mL of PBS + 2% FCS to the tube and mix gently by inversion.

1.2 Prepare a fresh 50 mL conical tube with 15 mL of density medium. Carefully layer the diluted blood sample onto the top of the density medium, being sure not to disrupt the density medium/blood interface that forms. Centrifuge for 20 min at 1200 x *g* and RT with acceleration set to 1 and the descending brake OFF.

NOTE: It is critical to set the acceleration to 1 and descending brake OFF on the centrifuge to avoid disruption of the cell layer in the density medium.

1.3 Collect the enriched CD4+ T cells from the density medium/plasma interface using a narrow stem transfer pipette. Transfer the collected cells to a fresh 50 mL conical tube. Centrifuge the collected CD4+ T cells for 8 min at 423 x *g* and RT.

NOTE: Make sure to return the centrifuge acceleration to 9 and descending brake to ON for step 1.3 and all of the following steps.

1.4 Discard the supernatant and wash the cell pellet twice with 50 mL of PBS + 2% FCS, centrifuging for 8 min at 423 x *g* and RT. Discard the final supernatant wash and suspend the washed cell pellet in 2 mL of PBS + 2% FCS.

1.5 Count cells using a hemocytometer. To continue with ATAC-seq, proceed to step 2.3. To freeze cells for later processing, proceed to step 1.6.

1.6 Add 1 mL of fresh freezing medium (90% FCS + 10% dimethyl sulfoxide) per 1 million cells. Aliquot 1 mL of cells in freezing medium in cryogenic safe tubes. Place tubes at -80 °C overnight in a slow-freezing container. The next day, transfer tubes to liquid nitrogen for long-term storage.

NOTE: 1 million CD4+ T cells will be isolated per 2 mL of original volume of whole blood. Freeze 500,000 cells in 1 mL aliquots of freezing medium. Make fresh freezing medium at

every use.

## 2. Activate and purify CD4+ T cells

NOTE: This rapid protocol for activating and purifying CD4+ T cells only requires 48 h and results in 95% viable, activated CD4+ T cells. Cool the centrifuge to 4 °C before beginning the protocol.

2.1 Thaw 1 vial (500,000) of CD4+ T cells in a 37 °C water bath until the ice has just melted. Gently transfer cells to a 15 mL conical tube containing 9 mL of pre-warmed Roswell Park Memorial Institute-1640 (RPMI-1640) media supplemented with 10% FCS, hereafter referred to as complete RPMI.

NOTE: Do not let cells thaw completely to avoid exposure to DMSO.

2.2 Centrifuge for 6 min at 1500 x *g* and 4 °C. Discard the supernatant and gently suspend the pellet in 2 mL of complete RPMI. Repeat the spin down, discard the supernatant, and gently suspend cells in 0.5 mL of complete RPMI.

2.3. Count the cells using a hemocytometer. Adjust the density of the cell suspension with complete RPMI to plate 50,000 cells in 200 µL per well of a 96-well round bottom plate.

NOTE: From one frozen tube of 500K CD4+ T cells, plate 10 wells of 50,000 CD4+ T cells in 200 µL per well.

2.4 Prepare magnetic beads conjugated with human T-activator anti-CD3 and anti-CD28 antibodies.

2.4.1. Aliquot 12.5 µL of human T-activator CD3/CD28 beads per ATAC-seq sample to a 1.5 mL tube. Wash the beads with 1 mL of 1x PBS and place the tube on a magnet for 1 min.

2.4.2. Carefully remove and discard the clear supernatant, remove the tube from magnet, and suspend the beads in 13 µL complete RPMI per ATAC-seq sample.

NOTE: Calculate the amount of beads necessary based on the number of ATAC-seq samples being processed. This protocol requires 12.5 µL of CD3/CD28 beads per 500,000 cells, which constitutes one ATAC-seq sample.

2.5 Activate the CD4+ T cells. Collect 500,000 cells in 2.1 mL of complete RPMI medium in a 15 mL conical tube and add 12.5 µL of pre-washed human T-activator beads. Mix gently by inverting the tube.

2.6 Gently transfer the cells with beads to a sterile reservoir and plate 200 µL of cells with beads per well of round bottom 96-well plate using a multi-channel pipette. Incubate for 48 h

177 in a 37 °C, 5% CO<sub>2</sub> incubator.

178  
179 2.7 Post incubation, centrifuge the 96-well plate for 8 min at 423 x *g* and RT. Remove 100 µL of  
180 medium per well from the 96-well plate, collecting it to a conical tube before discarding to  
181 ensure no bead loss. Resuspend the cell pellet in the remaining 100 µL and collect all in a 1.5 mL  
182 tube.

183  
184 NOTE: 10 wells of activated T cells will be collected in a 1 mL volume.

185  
186 2.8 Perform CD4+ isolation. Add 50 µL of pre-washed CD4 conjugated beads to 500,000 cells in  
187 1 mL of complete RPMI. Combine beads and cells by pipette. Incubate for 20 min at 4 °C in the  
188 fridge. Agitate beads and cell mixture every 6 min.

189  
190 NOTE: This protocol is to be used for one sample of 500,000 cells. Adjust as necessary for two  
191 or more samples of 500,000.

192  
193 2.9 When the incubation is complete, place the tube on the magnet for 2 min. Remove and  
194 discard the supernatant when clear. Wash the bead-bound cells by removing the tube from the  
195 magnet, suspending the bead-bound cells in 1 mL of PBS + 2% FCS, replacing the tube on the  
196 magnet for 1 min, and discarding the clear supernatant. Repeat this process for a total of 3  
197 washes.

198  
199 NOTE: Be careful not to discard any beads during washes.

200  
201 2.10 After the final wash, place the tube on the magnet for 1 min. Remove and discard the  
202 supernatant and place the pellet on ice. Proceed to section 3 (ATAC-seq).

### 203 204 3. ATAC-seq

205  
206 NOTE: In this step, nuclei are isolated from activated CD4+ T cells for ATAC-seq. The lysis  
207 buffer used in this protocol has been improved to be gentler on the nuclei, resulting in more  
208 efficient digestion and higher quality results. All centrifugation steps in section 3 are  
209 performed with a fixed-angle centrifuge maintained at 4 °C. Cool the centrifuge before  
210 beginning protocol.

211  
212 3.1 Perform nuclei isolation. Resuspend beads and cells with cold lysis buffer (10 mM Tris-HCl,  
213 pH 7.4, 10 mM NaCl, 3 mM MgCl<sub>2</sub>, 0.03% polysorbate 20). Centrifuge immediately at 500 x *g*  
214 for 10 min at 4 °C. Remove and discard the supernatant.

215  
216 3.2 Perform the transposase reaction. Suspend the isolated nuclei pellet with 50 µL of Tn5  
217 transposase mix (**Table 1**). Incubate in a thermocycler for 30 min at 37 °C with a 40 °C lid,  
218 holding at 4 °C when complete.

219  
220 3.3 After thermocycling, immediately perform a quick benchtop centrifuge spin down and



place the tube on the magnet for 1 min to remove the beads from the product.

3.4 Transfer the clear supernatant from the tube on the magnet to a DNA purification column. Wash the column once with 250  $\mu$ L of Buffer PB and twice with 750  $\mu$ L of Buffer PE. Elute the sample in 10  $\mu$ L of elution buffer. Proceed directly to step 3.5.

NOTE: This step amplifies the DNA fragments with the ligated adaptors, here referred to as the ATAC-seq library. In order to multiplex several ATAC-seq libraries to be run on one NGS lane, use unindexed Primer 1 for all samples and a different indexed Primer 2 for individual samples (**Table 2**). Primers are used at working concentrations of 1.25  $\mu$ M.

3.5. Set up the initial PCR amplification reaction in a nuclease-free PCR tube, combining the components in the order and volume specified in **Table 3**. Place the PCR tube into the thermocycler and run the PCR amplification program with cycling conditions as specified in **Table 4**.

3.6. Monitor the reaction by qPCR. Set up the qPCR reaction in a nuclease-free PCR tube, combining the components in the order and amount specified in **Table 5**. Place in qPCR machine and cycle as specified in **Table 6**.

3.6.1 To determine the optimal number of additional amplification cycles for the remaining 45  $\mu$ L reaction, create a plot with cycle number on the x-axis and relative fluorescence (RFU) on the y-axis. The optimal number of additional amplification cycles is one-third the number of cycles it takes for the qPCR reaction to reach plateau.

NOTE: Monitoring the reaction by qPCR allows for determination of the optimal number of PCR cycles desired to obtain optimal library fragment amplification while minimizing GC content and size bias.

3.7. Complete the final PCR amplification of the remaining 45  $\mu$ L of PCR reaction. Place the PCR tube with the amplification reaction from step 3.5 back in the thermocycler and run the program as described in **Table 7**.

NOTE: For samples processed as described in this protocol, the optimal total number of PCR amplification cycles was determined to be 12.

3.8. After the amplification is complete, purify the libraries using a PCR cleanup kit following the manufacturer's protocol, eluting in 25  $\mu$ L of the elution buffer.

NOTE: Amplified libraries can be stored at 4  $^{\circ}$ C for up to 48 h or frozen at -20  $^{\circ}$ C for long-term storage.

#### 4. ATAC-seq library quality analysis

NOTE: It is important to validate the quality and quantity of ATAC-seq libraries before next-generation sequencing. The quality and quantity of the libraries should be assessed using commercially available kits (see **Table of Materials**).

4.1. Assess the quality and quantity of the ATAC-seq libraries using a microfluidics-based platform for sizing, quantification and quality control of DNA. See **Figure 2** for representative quality assessment results.

NOTE: The concentration of the ATAC-seq libraries must be >1 ng/μL to obtain quality sequencing results. On average, 30 nM in 25 μL was obtained.

## 5. Sequencing and data analysis

NOTE: This analysis pipeline allows users to control the quality of reads mapping procedure, adjust coordinates for experimental design, and call peaks for downstream analysis. The following are the commands lines and explanation of execution. The data analysis package is available at ([https://github.com/s18692001/bulk\\_ATAC\\_seq](https://github.com/s18692001/bulk_ATAC_seq)).

5.1. Sequence the prepared libraries on a next generation sequencer to an average read depth of 42 million reads per sample.

5.2. Estimate the quality of sequencing reads by checking files generated by FastQC<sup>12</sup> software package using the command:

```
fastqc -o <output_directory> <fastq_file>
```

5.3. Trim the bases of reads by Trimmomatic<sup>13</sup> software, if needed, as determined by the FastQC quality check, using the command (for pair-ended):

```
java -jar <path to trimmomatic jar file> PE <input1> <input2> <paired output1> <unpaired output1> <paired output2> <unpaired output2> HEADCROP:<crop bases>
```

5.4. Align reads to human reference genome (hg38) by Bowtie2<sup>14</sup> software:

```
bowtie2 -x <reference genome> -1 <input pair 1> <input pair 2> -S <output SAM file>
```

NOTE: The argument -x is for the basename of the index for the reference genome, and -S is for the SAM format output.

5.5. Check the quality of mapped reads using Samtools<sup>15</sup> flagstat package:

```
samtools flagstat <BAM file>
```

5.6. Sort the mapped reads file and remove duplicates using Picard<sup>16</sup> tool:

```
java -jar picard.jar SortSam INPUT=<input SAM file name> OUTPUT=<output sorted BAM file name> SORT_ORDER=coordinate" and "java -jar picard.jar MarkDuplicates INPUT=<sorted BAM file> OUTPUT=<output BAM file without duplicates> REMOVE_DUPLICATES=TRUE
```

5.7. Index BAM file, trim the unused chromosome reads and shift the coordinates for the experimental reason of ATAC-seq<sup>17</sup>:

```
java -jar picard.jar BuildBamIndex INPUT=<BAM file>
samtools idxstats <Input BAM file> | cut -f 1 | grep -v chrY | grep -v chrM | grep -v chrUn |
xargs samtools view -b <Input BAM file> > <Output trimmed BAM file>
bedtools bamtobed -i <Input trimmed BAM file> > <Output trimmed BED file>
awk 'BEGIN {OFS = "\t"} ; {if ($6 == "+") print $1, $2 + 4, $3 + 4, $4, $5, $6; else print $1, $2 - 5, $3 - 5, $4, $5, $6}' <Input trimmed BED file> <Trimmed shifted BED file>
```

5.8. Delete the reads that are shifted to negative coordination:

```
awk '{if ($2 > 0) print $1 "\t" $2 "\t" $3 "\t" $4 "\t" $5 "\t" $6 }' <Input BED file> <Output non-negative coordination BED file>.
```

5.9. Convert the BED file to BAM file for following DiffBind<sup>18</sup> analysis:

```
bedtools bedtobam -i <Input BED file> -g <reference genome> <Output BAM file>
```

5.10. Perform peak calling by DiffBind<sup>18</sup> software package:

```
macs2 callpeak -t <Input BAM file> -f BAM -g hs -nomodel --nolambda --keep-dup all --call-summits --outdir <Output directory path> -n <Output name> -B -q 0.01 --bdg --shift -100 --extsize 200
```

NOTE: After filtering, expect a median of 37 million reads per sample. Mitochondrial DNA contamination will range from 0.30%–5.39% (1.96% on average). There will be a low rate of multiply mapped reads (6.7%–56%, 19% on average) and a relatively high percentage of usable nuclear reads (60%–92%, 79% on average).

## REPRESENTATIVE RESULTS:

From 15 mL of fresh whole blood, this protocol generates an average of 1 million CD4<sup>+</sup> T cells. These can be frozen for later processing or used immediately. Viability of the CD4<sup>+</sup> T cells, fresh or thawed, was consistently >95%. This method of CD4<sup>+</sup> T cell isolation allows for flexibility in source material and collection time. This improved ATAC-seq protocol produces a final library of greater than 1 ng/μL for sequencing. Quality control performed using commercially available systems should demonstrate DNA fragments between 200 and 1000 bp (**Figure 2**). Sequencing should only be performed with high quality libraries.

All libraries were sequenced to an average depth of greater than 40 million read per sample. While previous ATAC-seq protocols have been challenged by contaminating sequencing reads from mitochondrial DNA that can range from 50%–60% of the total sequencing reads<sup>1</sup> this improved protocol eliminates the issue. Libraries prepared following this protocol contain on average only 3% mitochondrial reads (**Figure 3A**). The high percentage of usable reads is sufficiently constant across biological replicates (**Figure 3B**). The protocol was able to provide highly reproducible results across technical replicates (**Figure 4A, B**) as well as biological replicates (**Figure 4C, D**). Additionally, the protocol for CD4<sup>+</sup> T cell activation presented takes 48 h rather than one week or more and results in consistent and efficient activation, as

demonstrated by reproducible sequencing results (**Figure 4A, B**). Predicted ATAC-seq peaks are accurately called by the analysis pipeline (**Figure 4E**). Analysis of sequencing results identified clear changes in chromatin state during human T cell activation. Differentially accessible regions of open chromatin were identified between six samples before and after 48 h of activation (**Figure 5**).

**FIGURE AND TABLE LEGENDS:**

**Figure 1: Experimental overview of the modified ATAC-seq protocol.** (A) Sample acquisition and processing, from 15 mL of patient whole blood through CD4+ T cell isolation, plating and activation of the T cells, and nuclei isolation with the improved lysis buffer. (B) The transposase reaction and PCR amplification of the sequencing library. (C) Quality analysis, sequencing, and data analysis.

**Figure 2: Representative high quality ATAC-seq libraries from a microfluidics-based platform for sizing, quantification and quality control of DNA.** (A) Electronic gel image of samples B1 and D1 with banding between 200 and 1,000 base pairs. (B and C) Electropherogram trace result of samples B1 (B) and D1 (C), with peaks between 200 and 1,000 base pairs.

**Figure 3: Decreased mitochondrial DNA contamination with the improved ATAC-seq protocol results in an increase in usable DNA sequencing reads.** (A) Comparison of usable reads (purple), duplicate reads (green), and mitochondrial reads (red) from CD4+ T cell ATAC-seq profiling in the literature. (B) Comparison of usable reads (purple), duplicate reads (green), mitochondrial reads (red), and unmapped reads (blue) of CD4+ T cell ATAC-seq profiling from multiple healthy individuals (n = 22). This figure has been modified from Cheng et al.<sup>10</sup>.

**Figure 4: Improved ATAC-seq protocol reproducibility and accuracy.** Scatter plots of chromatin accessibility (ATAC-seq signal, x and y-axes) for two replicate experiments of unstimulated (A; 36,486 Th peaks) or activated (B; 52,154 Thstim peaks) T cells demonstrates technical reproducibility. Chromatin accessibility for activated T cells from individuals IGTB1191 (y-axis) and IGTB1190 (x-axis) (C) and histogram of correlations between every pairs of individuals for the 52,154 Thstim peaks (D) demonstrates reproducibility between individuals. (E) ATAC-seq peaks called with our improved ATAC-seq protocol at chromosome 19 Q13.12. This figure has been modified from Cheng et al.<sup>10</sup>.

**Figure 5: Representative ATAC-seq results of changes in chromatin state after CD4+ T-cell activation.** (A) Experimental overview (left) and nomenclature (right). (B) Differentially accessible regions of open chromatin (columns) in six samples (rows) before (top, Th) and after (bottom, Thstim) 48 h activation of primary CD4+ T cells. This figure has been modified from Cheng et al.<sup>10</sup>.

**Table 1: Step 3.2 transposase reaction components.**

**Table 2: ATAC-seq oligos designs used for PCR.**

**Table 3: Step 3.5 initial PCR reaction mix.**

**Table 4: Step 3.5 initial PCR amplification cycling program.**

**Table 5: Step 3.6 qPCR reaction mix.**

**Table 6: Step 3.6 qPCR cycling program.**

**Table 7: Step 3.7 PCR cycling program for final PCR amplification.**

## **DISCUSSION:**

The modified ATAC-seq protocol presented in this article provides reproducible results with minimal mitochondrial DNA contamination. The protocol has been used to successfully characterize chromatin architecture of human primary PBMCs<sup>10</sup>, human monocytes, mouse dendritic cells (unpublished), and cultured melanoma cell lines<sup>11</sup>. We anticipate this improved lysis condition has the potential to work for other cell types as well. It is also anticipated that this nuclei isolation protocol will be compatible with single nuclei ATAC-seq protocols, minimizing mitochondrial DNA contamination to improve sequencing results.

An additional benefit of this modified protocol is the ability to freeze batches of isolated CD4+ T cells from PBMCs at different times depending on the availability of patient samples. As ATAC-seq can then be performed concurrently on all samples, potential batch effect bias in the transposase reaction and sequencing is minimized<sup>10</sup>. It is critical that freezing medium be made fresh with each use, in order to maintain the high viability that is achieved with this freeze-thaw protocol. Viability of isolated CD4+ T cells should remain above 90% in order to avoid non-specific digestion in the transposase reaction<sup>1</sup>.

Please note that further optimization may be required in order to use this protocol with variable cell types and quantities. Since the Tn5 transposase-to-nuclei ratio has been optimized for 500,000 nuclei in this protocol, if performing ATAC-seq with a different number of nuclei, the amount of Tn5 transposase should be adjusted accordingly. Over-lysis of nuclei due to an excess of Tn5 may lead to high background from closed chromatin and low complexity of sequencing libraries, while under-lysis may not provide a complete PCR amplified library<sup>1</sup>. In order to avoid these complications, it is advised to perform careful nuclei counting and optimize the Tn5 ratio as necessary. To further improve data quality, it is advised to optimize PCR amplification cycles by qPCR monitoring. If the final library undergoes too many amplification cycles, there may be bias introduced in the sequencing data<sup>2</sup>. It is recommended to perform proper quality control of the ATAC-seq libraries prior to next-generation sequencing in order to save time and money.

As we have demonstrated, a new lysis buffer is key to the reduction of mitochondrial DNA contamination and is effective on a wide range of cell types. While other protocols have addressed the issue of mitochondrial contamination through the addition of extra washing

steps<sup>19</sup> or the intensive process of a CRISPR-mediated mitochondrial DNA depletion<sup>20</sup>, this ATAC-seq protocol does not add reagents or experimental steps, which makes it a more accessible technique. Together with RNA-seq and single-cell sequencing, ATAC-seq is a powerful tool for exploring epigenetic regulation. This improved ATAC-seq protocol and data analysis package will help decrease sequencing costs and produce higher quality results.

#### ACKNOWLEDGMENTS:

We thank Atsede Siba for technical support. C.S.C. is supported by NIH grant 1R61DA047032.

#### DISCLOSURES:

The authors have nothing to disclose.

#### REFERENCES:

1. Buenrostro, J. D., Giresi, P. G., Zaba, L. C., Chang, H. Y., Greenleaf, W. J. Transposition of native chromatin for fast and sensitive epigenomic profiling of open chromatin, DNA-binding proteins and nucleosome position. *Nature Methods*. **10** (12), 1213-1218, doi:10.1038/nmeth.2688 (2013).
2. Buenrostro, J. D., Wu, B., Chang, H. Y., Greenleaf, W. J. ATAC-seq: A Method for Assaying Chromatin Accessibility Genome-Wide. *Current Protocols in Molecular Biology*. **21**, 29.1-29.9, doi:10.1002/0471142727.mb2129s109 (2015).
3. Song, L., Crawford, G.E. DNase-seq: a high-resolution technique for mapping active gene regulatory elements across the genome from mammalian cells. *Cold Spring Harbor Protocols*. (2), doi:10.1101/pdb.prot5384 (2010).
4. Pajoro, A., Muiño, J. M., Angenent, G. C., Kaufmann, K. Profiling Nucleosome Occupancy by MNase-seq: Experimental Protocol and Computational Analysis. *Methods in Molecular Biology*. **1675**, 167-181, doi:10.1007/978-1-4939-7318-7\_11 (2018).
5. Giresi, P. G., Kim, J., McDaniell, R. M., Iyer, V. R., Lieb, J. D. FAIRE (Formaldehyde-Assisted Isolation of Regulatory Elements) isolates active regulatory elements from human chromatin. *Genome Research*. **17** (6), 877-885, doi:10.1101/gr.5533506 (2007).
6. Rosenberg, A. B., et al. Single-cell profiling of the developing mouse brain and spinal cord with split-pool barcoding. *Science*. **360** (6385), 176-182, doi:10.1126/science.aam8999 (2018).
7. Corces, M. R. et al. Lineage-specific and single-cell chromatin accessibility charts human hematopoiesis and leukemia evolution. *Nature Genetics*. **48** (10), 1193-1203, doi:10.1038/ng.3646 (2016).
8. Lu, Z., Hofmeister, B. T., Vollmers, C., DuBois, R. M., Schmitz, R. J. Combining ATAC-seq with nuclei sorting for discovery of cis-regulatory regions in plant genomes. *Nucleic Acids Research*. **45** (6), e41, doi:10.1093/nar/gkw1179 (2017).
9. Lara-Astiaso, D. et al. Immunogenetics. Chromatin state dynamics during blood formation. *Science*. **345** (6199), 943-949, doi:10.1126/science.1256271 (2014).
10. Gate, R. E. et al. Genetic determinants of co-accessible chromatin regions in activated T cells across humans. *Nature Genetics*. doi:10.1038/s41588-018-0156-2 (2018).
11. Sanjana, N. E. et al. High-resolution interrogation of functional elements in the noncoding genome. *Science*. **353** (6307), 1545-1549, doi:10.1126/science.aaf7613 (2016).

12. Andrews, S. FastQC A Quality Control tool for High Throughput Sequence Data. Babraham Bioinformatics. <https://www.bioinformatics.babraham.ac.uk/projects/fastqc>. Accessed September 15, 2018.
13. Bolger, A. M., Lohse, M., Usadel, B. Trimmomatic: a flexible trimmer for Illumina sequence data. *Bioinformatics*. **30** (15), 2114-2120, doi:10.1093/bioinformatics/btu170 (2014).
14. Langmead, B., Salzberg, S. L. Fast gapped-read alignment with Bowtie 2. *Nature Methods*. **9** (4), 357-359, doi:10.1038/nmeth.1923 (2012).
15. Li, H. et al. The Sequence Alignment/Map format and SAMtools. *Bioinformatics*. **25** (16), 2078-2079, doi:10.1093/bioinformatics/btp352 (2009).
16. Broad Institute. Picard Tools. <http://broadinstitute.github.io/picard/>. Accessed September 15, 2018.
17. Quinlan, A. R., Hall, I. M. BEDTools: a flexible suite of utilities for comparing genomic features. *Bioinformatics*. **26** (6), 841-842, doi:10.1093/bioinformatics/btq033 (2010).
18. Stark, R., Brown, G. *DiffBind: Differential Binding Analysis of ChIP-Seq Peak Data*. <http://bioconductor.org/packages/devel/bioc/vignettes/DiffBind/inst/doc/DiffBind.pdf>. Accessed September 15, 2018.
19. Corces, M. R. et al. An improved ATAC-seq protocol reduces background and enables interrogation of frozen tissues. *Nature Methods*. **14** (10), 959-962. doi:10.1038/nmeth.4396 (2017).
20. Wu, J. et al. The landscape of accessible chromatin in mammalian preimplantation embryos. *Nature*. **534** (7609), 652-657, doi:10.1038/nature18606 (2016).

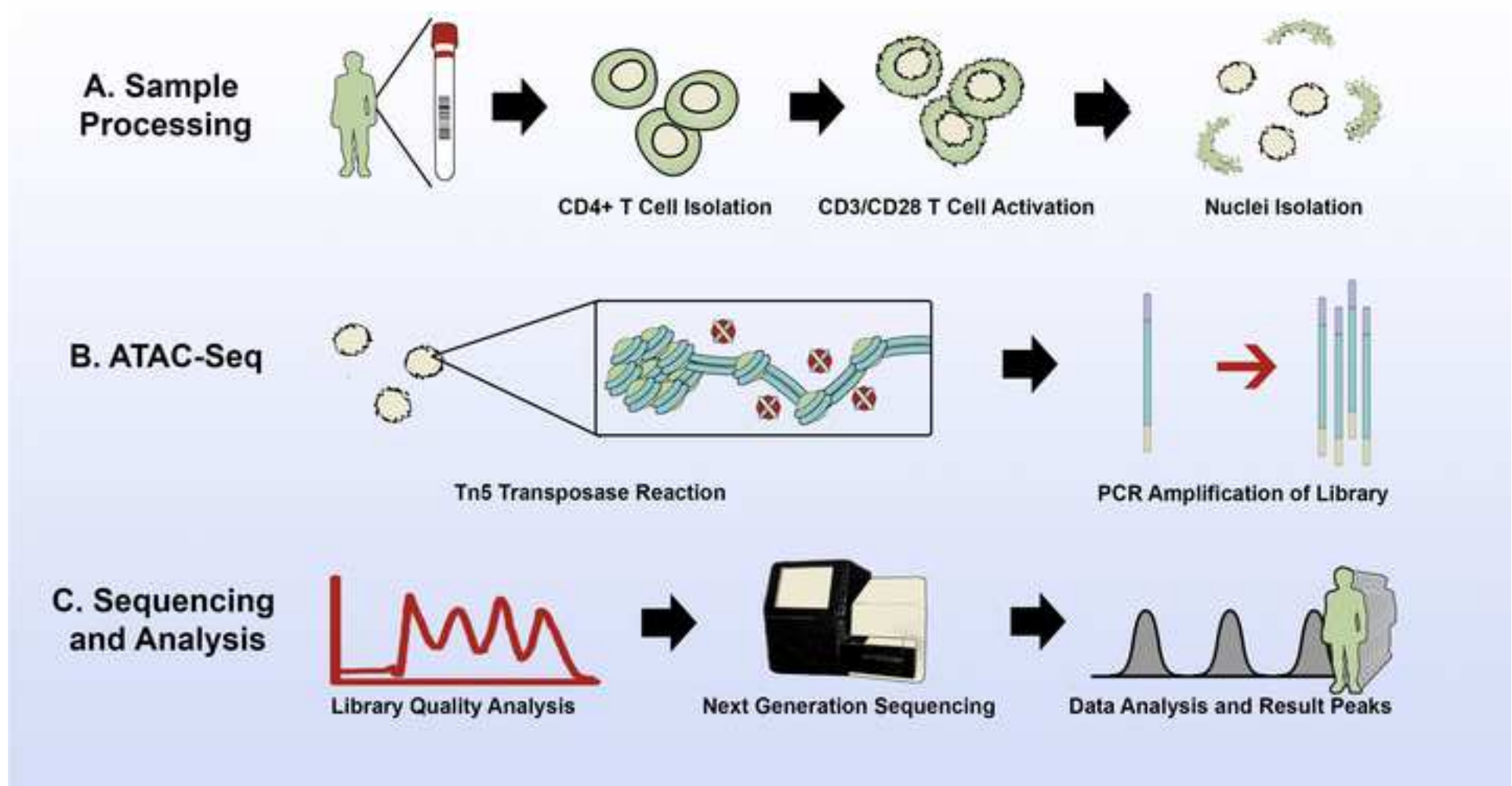
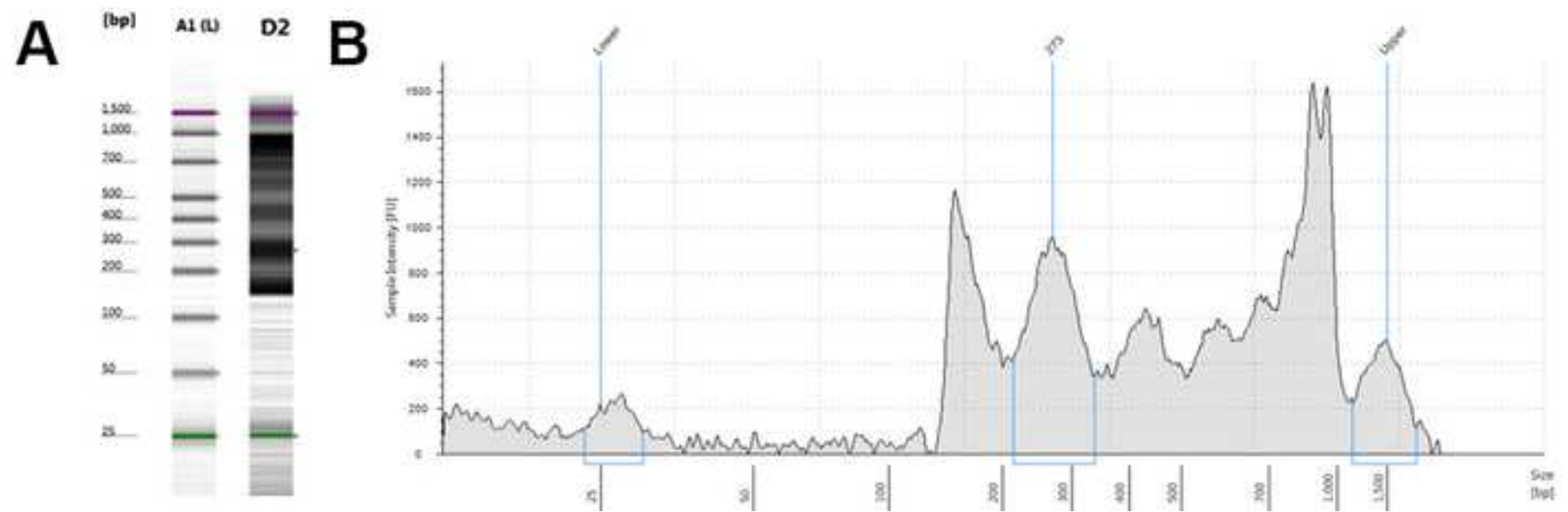




Figure 2



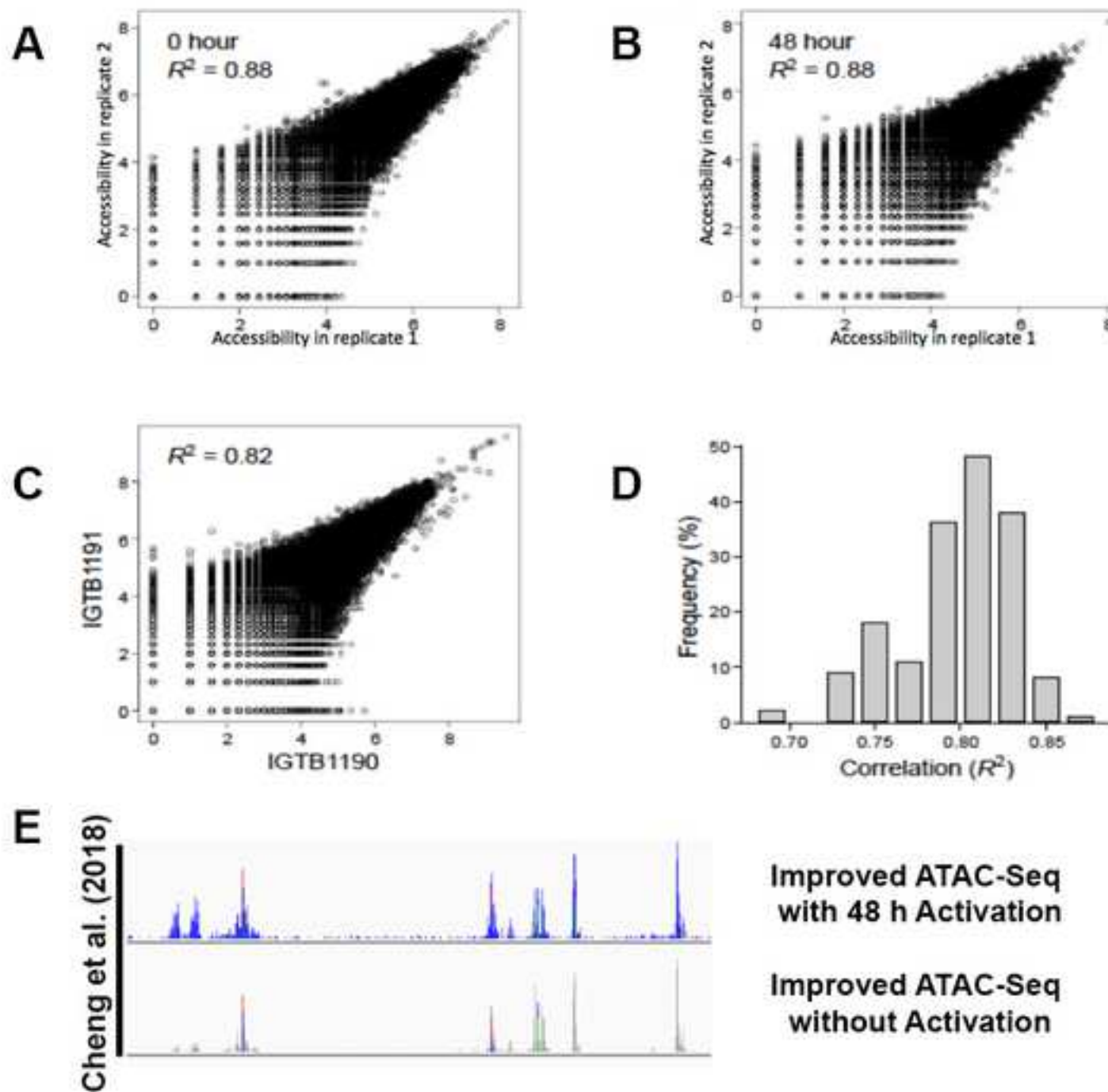
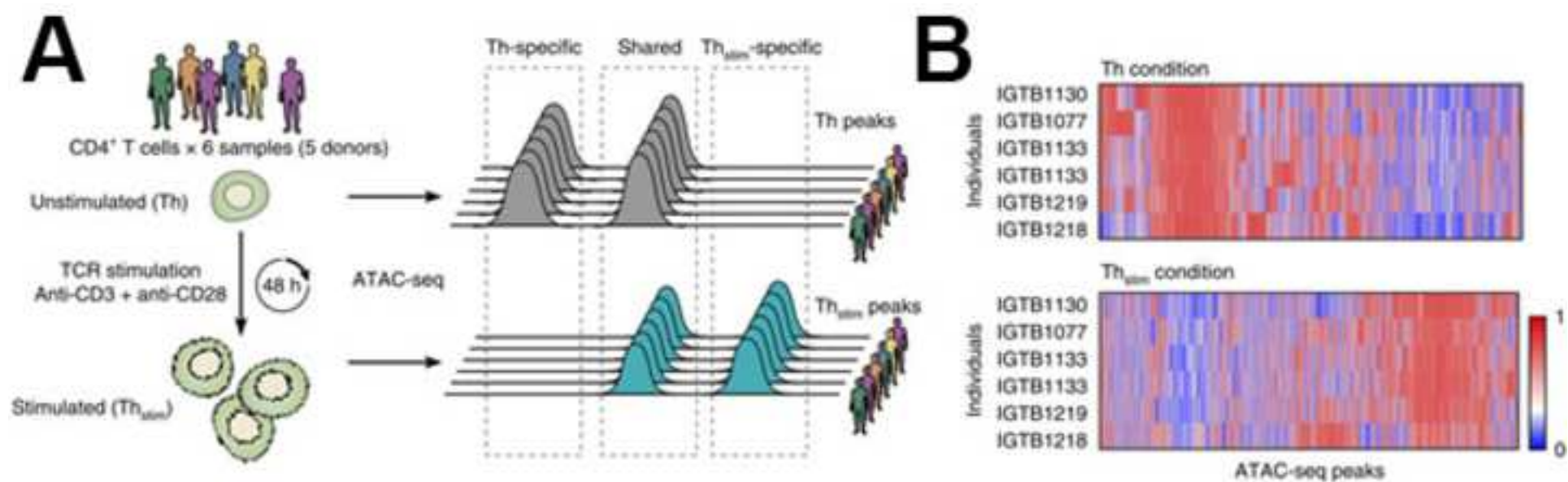


Figure 5



2x TD Buffer	25 µL
TN5 Enzyme	5 µL
Nuclease Free Water	20 µL
Total Volume	50 µL

Ad1\_noMX: AATGATACGGCGACCACCGAGATCTACACTCGTCGGCAGCGTCAGATGTG  
Ad2.1\_TAAGGCGA CAAGCAGAAGACGGCATAACGAGATTCGCCTTAGTCTCGTGGGCTCGGAGATGT  
Ad2.2\_CGTACTAG CAAGCAGAAGACGGCATAACGAGATCTAGTACGGTCTCGTGGGCTCGGAGATGT  
Ad2.3\_AGGCAGAA CAAGCAGAAGACGGCATAACGAGATTTCTGCCTGTCTCGTGGGCTCGGAGATGT  
Ad2.4\_TCCTGAGC CAAGCAGAAGACGGCATAACGAGATGCTCAGGAGTCTCGTGGGCTCGGAGATGT  
Ad2.5\_GGACTCCT CAAGCAGAAGACGGCATAACGAGATAGGAGTCCGTCTCGTGGGCTCGGAGATGT  
Ad2.6\_TAGGCATG CAAGCAGAAGACGGCATAACGAGATCATGCCTAGTCTCGTGGGCTCGGAGATGT  
Ad2.7\_CTCTCTAC CAAGCAGAAGACGGCATAACGAGATGTAGAGAGGTCTCGTGGGCTCGGAGATGT  
Ad2.8\_CAGAGAGG CAAGCAGAAGACGGCATAACGAGATCCTCTCTGGTCTCGTGGGCTCGGAGATGT  
Ad2.9\_GCTACGCT CAAGCAGAAGACGGCATAACGAGATAGCGTAGCGTCTCGTGGGCTCGGAGATGT  
Ad2.10\_CGAGGCTG CAAGCAGAAGACGGCATAACGAGATCAGCCTCGGTCTCGTGGGCTCGGAGATGT  
Ad2.11\_AAGAGGCA CAAGCAGAAGACGGCATAACGAGATTGCCTCTTGTCTCGTGGGCTCGGAGATGT  
Ad2.12\_GTAGAGGA CAAGCAGAAGACGGCATAACGAGATTCTCTACGTCTCGTGGGCTCGGAGATGT  
Ad2.13\_GTCGTGAT CAAGCAGAAGACGGCATAACGAGATATCACGACGTCTCGTGGGCTCGGAGATGT  
Ad2.14\_ACCACTGT CAAGCAGAAGACGGCATAACGAGATACAGTGGTGTCTCGTGGGCTCGGAGATGT  
Ad2.15\_TGGATCTG CAAGCAGAAGACGGCATAACGAGATCAGATCCAGTCTCGTGGGCTCGGAGATGT  
Ad2.16\_CCGTTTGT CAAGCAGAAGACGGCATAACGAGATACAAACGGGTCTCGTGGGCTCGGAGATGT  
Ad2.17\_TGCTGGGT CAAGCAGAAGACGGCATAACGAGATACCCAGCAGTCTCGTGGGCTCGGAGATGT  
Ad2.18\_GAGGGGTT CAAGCAGAAGACGGCATAACGAGATAACCCCTCGTCTCGTGGGCTCGGAGATGT  
Ad2.19\_AGGTTGGG CAAGCAGAAGACGGCATAACGAGATCCCAACCTGTCTCGTGGGCTCGGAGATGT  
Ad2.20\_GTGTGGTG CAAGCAGAAGACGGCATAACGAGATCACCACACGTCTCGTGGGCTCGGAGATGT  
Ad2.21\_TGGGTTTC CAAGCAGAAGACGGCATAACGAGATGAAACCCAGTCTCGTGGGCTCGGAGATGT  
Ad2.22\_TGGTCACA CAAGCAGAAGACGGCATAACGAGATTGTGACCAGTCTCGTGGGCTCGGAGATGT  
Ad2.23\_TTGACCCT CAAGCAGAAGACGGCATAACGAGATAGGGTCAAGTCTCGTGGGCTCGGAGATGT  
Ad2.24\_CCACTCCT CAAGCAGAAGACGGCATAACGAGATAGGAGTGGGTCTCGTGGGCTCGGAGATGT

Nuclease Free Water	11.9 $\mu$ L
100 $\mu$ M Custom Nextera Primer 1 (Table 2)	0.6 $\mu$ L
NEBNext High-Fidelity 2x PCR Master Mix	25 $\mu$ L
ATAC-Seq Library	10 $\mu$ L
25 $\mu$ M Custom Nextera Primer 2 (Table 2)	2.5 $\mu$ L
Total Volume	50 $\mu$ L

CYCLE STEP	TEMPERATURE	TIME
Extension	72 °C	5 min
Initial Denaturation	98 °C	30 s
Denaturation	98 °C	10 s
Annealing	63 °C	30 s
Extension	72 °C	1 min
Hold	4 °C	Infinity

## CYCLES

1

1

10

1



PCR Reaction Aliquot	5 $\mu$ L
----------------------	-----------

PCR Cocktail from Table 3 with 0.6x Syber Green	10 $\mu$ L
--	------------

CYCLE STEP	TEMPERATURE	TIME	CYCLES
Initial Denaturation	98 °C	30 s	1
Denaturation	98 °C	10 s	20
Annealing	63 °C	30 s	
Extension	72 °C	1 min	
Hold	4 °C	Infinity	1

CYCLE STEP	TEMPERATURE	TIME
Initial Denaturation	98 °C	30 s
Denaturation	98 °C	10 s
Annealing	63 °C	30 s
Extension	72 °C	1 min
Hold	4 °C	Infinity

CYCLES

1

As Determined

1

Name
1X PBS, Sterile
5810/5810 R Swing Bucket Refrigerated Centrifuge with 50 mL, 15 mL, and 1.5 mL Tube Buckets
96 Well Round Bottom Plate
Agilent 4200 Tape Station System
Cryotubes
DMSO
Dynabeads Human T-Activator CD3/CD28
Dynabeads Untouched Human CD4 T Cells Kit
Dynamagnet
FCS
High Sensitivity DNA Kit
Magnesium Chloride, Hexahydrate, Molecular Biology Grade
MinElute PCR Purification Kit (Buffer PB, Buffer PE, Elution Buffer)
Mr. Frosty
NaCl, Molecular Biology Grade
NEBNext High Fidelity 2X PCR Master Mix
Nextera DNA Library Preparation Kit (2X TD Buffer, Tn5 Enzyme)
Nuclease Free Sterile dH2O
Polysorbate 20 (Tween20)
PowerUp SYBR Green Master Mix
Precision Water Bath
QIAquick PCR Purification Kit
Qubit dsDNA HS Assay Kit
Qubit FlouroMeter
Rosette Sep Human CD4+ Density Medium
Rosette Sep Human CD4+ Enrichment Cocktail
RPMI-1640
Sterile Reservoir
T100 Thermocycler with Heated Lid
Tris-HCL

<b>Company</b>	<b>Catalogue Number</b>	<b>Comments</b>
Gibco	10010023	Can use other comparable products.
Eppendorf	22625501	Can use other comparable products.
Thermo Scientific	163320	Can use other comparable products.
Agilent	G2991AA	Suggested for quality assessment.
Thermo Scientific	374081	Can use other comparable products.
Sigma	D8418	Can use other comparable products.
Invitrogen Life Technologies	11131D	Critical Component
Invitrogen Life Technologies	11346D	Critical Component
Invitrogen Life Technologies	12321D	Critical Component
Gemini Bio Products	100-500	Can use other comparable products.
Agilent	50674626	Suggested for quality assessment.
Sigma	M2393	Can use other comparable products.
Qiagen	28004	Critical Component
Thermo Scientific	5100-0001	Can use other comparable products.
Sigma	S3014	Can use other comparable products.
New England BioLabs	M0541	Critical Component
Illumina	FC1211030	Critical Component
Gibco	10977015	Can use other comparable products.
Sigma	P9416	Can use other comparable products.
Applied Biosystems	A25780	Critical Component
Thermo Scientific	TSGP02	Can use other comparable products.
Qiagen	28104	Critical Component
Invitrogen Life Technologies	Q32851	Suggested for quality assessment.
Invitrogen Life Technologies	Q33226	Suggested for quality assessment.
Stem Cell Technologies	15705	Critical Component
Stem Cell Technologies	15022	Critical Component
Gibco	11875093	Can use other comparable products.
Thermo Scientific	8096-11	Can use other comparable products.
BioRad	1861096	Can use other comparable products.
Sigma	T5941	Can use other comparable products.



1 Alewife Center #200  
Cambridge, MA 02140  
tel. 617.945.9051  
www.jove.com

## ARTICLE AND VIDEO LICENSE AGREEMENT

Title of Article: An Improved ATAC-seq Protocol with Low Mitochondrial DNA Contamination to Map Genome-Wide Chromatin Architecture in Primary  
Author(s): Human CD4+ T Lymphocytes  
Hannah D Rickner, Simon Niu, Christine S Cheng

Item 1: The Author elects to have the Materials be made available (as described at <http://www.jove.com/publish>) via:

☐ Standard Access

☒ Open Access

Item 2: Please select one of the following items:

☒ The Author is **NOT** a United States government employee.

☐ The Author is a United States government employee and the Materials were prepared in the course of his or her duties as a United States government employee.

☐ The Author is a United States government employee but the Materials were NOT prepared in the course of his or her duties as a United States government employee.

### ARTICLE AND VIDEO LICENSE AGREEMENT

1. **Defined Terms.** As used in this Article and Video License Agreement, the following terms shall have the following meanings: “**Agreement**” means this Article and Video License Agreement; “**Article**” means the article specified on the last page of this Agreement, including any associated materials such as texts, figures, tables, artwork, abstracts, or summaries contained therein; “**Author**” means the author who is a signatory to this Agreement; “**Collective Work**” means a work, such as a periodical issue, anthology or encyclopedia, in which the Materials in their entirety in unmodified form, along with a number of other contributions, constituting separate and independent works in themselves, are assembled into a collective whole; “**CRC License**” means the Creative Commons Attribution-Non Commercial-No Derivs 3.0 Unported Agreement, the terms and conditions of which can be found at: <http://creativecommons.org/licenses/by-nc-nd/3.0/legalcode>; “**Derivative Work**” means a work based upon the Materials or upon the Materials and other pre-existing works, such as a translation, musical arrangement, dramatization, fictionalization, motion picture version, sound recording, art reproduction, abridgment, condensation, or any other form in which the Materials may be recast, transformed, or adapted; “**Institution**” means the institution, listed on the last page of this Agreement, by which the Author was employed at the time of the creation of the Materials; “**JOVE**” means MyJove Corporation, a Massachusetts corporation and the publisher of The Journal of Visualized Experiments; “**Materials**” means the Article and / or the Video; “**Parties**” means the Author and JoVE; “**Video**” means any video(s) made by the Author, alone or in conjunction with any other parties, or by JoVE or its affiliates or agents, individually or in collaboration with the Author or any other parties, incorporating all or any portion

of the Article, and in which the Author may or may not appear.

2. **Background.** The Author, who is the author of the Article, in order to ensure the dissemination and protection of the Article, desires to have the JoVE publish the Article and create and transmit videos based on the Article. In furtherance of such goals, the Parties desire to memorialize in this Agreement the respective rights of each Party in and to the Article and the Video.

3. **Grant of Rights in Article.** In consideration of JoVE agreeing to publish the Article, the Author hereby grants to JoVE, subject to **Sections 4 and 7** below, the exclusive, royalty-free, perpetual (for the full term of copyright in the Article, including any extensions thereto) license (a) to publish, reproduce, distribute, display and store the Article in all forms, formats and media whether now known or hereafter developed (including without limitation in print, digital and electronic form) throughout the world, (b) to translate the Article into other languages, create adaptations, summaries or extracts of the Article or other Derivative Works (including, without limitation, the Video) or Collective Works based on all or any portion of the Article and exercise all of the rights set forth in (a) above in such translations, adaptations, summaries, extracts, Derivative Works or Collective Works and (c) to license others to do any or all of the above. The foregoing rights may be exercised in all media and formats, whether now known or hereafter devised, and include the right to make such modifications as are technically necessary to exercise the rights in other media and formats. If the “Open Access” box has been checked in **Item 1** above, JoVE and the Author hereby grant to the public all such rights in the Article as provided in, but subject to all limitations and requirements set forth in, the CRC License.

## ARTICLE AND VIDEO LICENSE AGREEMENT

4. **Retention of Rights in Article.** Notwithstanding the exclusive license granted to JoVE in **Section 3** above, the Author shall, with respect to the Article, retain the non-exclusive right to use all or part of the Article for the non-commercial purpose of giving lectures, presentations or teaching classes, and to post a copy of the Article on the Institution's website or the Author's personal website, in each case provided that a link to the Article on the JoVE website is provided and notice of JoVE's copyright in the Article is included. All non-copyright intellectual property rights in and to the Article, such as patent rights, shall remain with the Author.

5. **Grant of Rights in Video – Standard Access.** This **Section 5** applies if the "Standard Access" box has been checked in **Item 1** above or if no box has been checked in **Item 1** above. In consideration of JoVE agreeing to produce, display or otherwise assist with the Video, the Author hereby acknowledges and agrees that, Subject to **Section 7** below, JoVE is and shall be the sole and exclusive owner of all rights of any nature, including, without limitation, all copyrights, in and to the Video. To the extent that, by law, the Author is deemed, now or at any time in the future, to have any rights of any nature in or to the Video, the Author hereby disclaims all such rights and transfers all such rights to JoVE.

6. **Grant of Rights in Video – Open Access.** This **Section 6** applies only if the "Open Access" box has been checked in **Item 1** above. In consideration of JoVE agreeing to produce, display or otherwise assist with the Video, the Author hereby grants to JoVE, subject to **Section 7** below, the exclusive, royalty-free, perpetual (for the full term of copyright in the Article, including any extensions thereto) license (a) to publish, reproduce, distribute, display and store the Video in all forms, formats and media whether now known or hereafter developed (including without limitation in print, digital and electronic form) throughout the world, (b) to translate the Video into other languages, create adaptations, summaries or extracts of the Video or other Derivative Works or Collective Works based on all or any portion of the Video and exercise all of the rights set forth in (a) above in such translations, adaptations, summaries, extracts, Derivative Works or Collective Works and (c) to license others to do any or all of the above. The foregoing rights may be exercised in all media and formats, whether now known or hereafter devised, and include the right to make such modifications as are technically necessary to exercise the rights in other media and formats. For any Video to which this **Section 6** is applicable, JoVE and the Author hereby grant to the public all such rights in the Video as provided in, but subject to all limitations and requirements set forth in, the CRC License.

7. **Government Employees.** If the Author is a United States government employee and the Article was prepared in the course of his or her duties as a United States government employee, as indicated in **Item 2** above, and any of the licenses or grants granted by the Author hereunder exceed the scope of the 17 U.S.C. 403, then the rights granted hereunder shall be limited to the maximum

rights permitted under such statute. In such case, all provisions contained herein that are not in conflict with such statute shall remain in full force and effect, and all provisions contained herein that do so conflict shall be deemed to be amended so as to provide to JoVE the maximum rights permissible within such statute.

8. **Protection of the Work.** The Author(s) authorize JoVE to take steps in the Author(s) name and on their behalf if JoVE believes some third party could be infringing or might infringe the copyright of either the Author's Article and/or Video.

9. **Likeness, Privacy, Personality.** The Author hereby grants JoVE the right to use the Author's name, voice, likeness, picture, photograph, image, biography and performance in any way, commercial or otherwise, in connection with the Materials and the sale, promotion and distribution thereof. The Author hereby waives any and all rights he or she may have, relating to his or her appearance in the Video or otherwise relating to the Materials, under all applicable privacy, likeness, personality or similar laws.

10. **Author Warranties.** The Author represents and warrants that the Article is original, that it has not been published, that the copyright interest is owned by the Author (or, if more than one author is listed at the beginning of this Agreement, by such authors collectively) and has not been assigned, licensed, or otherwise transferred to any other party. The Author represents and warrants that the author(s) listed at the top of this Agreement are the only authors of the Materials. If more than one author is listed at the top of this Agreement and if any such author has not entered into a separate Article and Video License Agreement with JoVE relating to the Materials, the Author represents and warrants that the Author has been authorized by each of the other such authors to execute this Agreement on his or her behalf and to bind him or her with respect to the terms of this Agreement as if each of them had been a party hereto as an Author. The Author warrants that the use, reproduction, distribution, public or private performance or display, and/or modification of all or any portion of the Materials does not and will not violate, infringe and/or misappropriate the patent, trademark, intellectual property or other rights of any third party. The Author represents and warrants that it has and will continue to comply with all government, institutional and other regulations, including, without limitation all institutional, laboratory, hospital, ethical, human and animal treatment, privacy, and all other rules, regulations, laws, procedures or guidelines, applicable to the Materials, and that all research involving human and animal subjects has been approved by the Author's relevant institutional review board.

11. **JoVE Discretion.** If the Author requests the assistance of JoVE in producing the Video in the Author's facility, the Author shall ensure that the presence of JoVE employees, agents or independent contractors is in accordance with the relevant regulations of the Author's institution. If more than one author is listed at the beginning of this Agreement, JoVE may, in its sole



## ARTICLE AND VIDEO LICENSE AGREEMENT

discretion, elect not take any action with respect to the Article until such time as it has received complete, executed Article and Video License Agreements from each such author. JoVE reserves the right, in its absolute and sole discretion and without giving any reason therefore, to accept or decline any work submitted to JoVE. JoVE and its employees, agents and independent contractors shall have full, unfettered access to the facilities of the Author or of the Author's institution as necessary to make the Video, whether actually published or not. JoVE has sole discretion as to the method of making and publishing the Materials, including, without limitation, to all decisions regarding editing, lighting, filming, timing of publication, if any, length, quality, content and the like.

12. **Indemnification.** The Author agrees to indemnify JoVE and/or its successors and assigns from and against any and all claims, costs, and expenses, including attorney's fees, arising out of any breach of any warranty or other representations contained herein. The Author further agrees to indemnify and hold harmless JoVE from and against any and all claims, costs, and expenses, including attorney's fees, resulting from the breach by the Author of any representation or warranty contained herein or from allegations or instances of violation of intellectual property rights, damage to the Author's or the Author's institution's facilities, fraud, libel, defamation, research, equipment, experiments, property damage, personal injury, violations of institutional, laboratory, hospital, ethical, human and animal treatment, privacy or other rules, regulations, laws, procedures or guidelines, liabilities and other losses or damages related in any way to the submission of work to JoVE, making of videos by JoVE, or publication in JoVE or elsewhere by JoVE. The Author shall be responsible for, and shall hold JoVE harmless from, damages caused by lack of sterilization, lack of cleanliness or by contamination due to

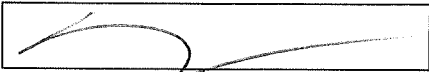
the making of a video by JoVE its employees, agents or independent contractors. All sterilization, cleanliness or decontamination procedures shall be solely the responsibility of the Author and shall be undertaken at the Author's expense. All indemnifications provided herein shall include JoVE's attorney's fees and costs related to said losses or damages. Such indemnification and holding harmless shall include such losses or damages incurred by, or in connection with, acts or omissions of JoVE, its employees, agents or independent contractors.

13. **Fees.** To cover the cost incurred for publication, JoVE must receive payment before production and publication of the Materials. Payment is due in 21 days of invoice. Should the Materials not be published due to an editorial or production decision, these funds will be returned to the Author. Withdrawal by the Author of any submitted Materials after final peer review approval will result in a US\$1,200 fee to cover pre-production expenses incurred by JoVE. If payment is not received by the completion of filming, production and publication of the Materials will be suspended until payment is received.

14. **Transfer, Governing Law.** This Agreement may be assigned by JoVE and shall inure to the benefits of any of JoVE's successors and assignees. This Agreement shall be governed and construed by the internal laws of the Commonwealth of Massachusetts without giving effect to any conflict of law provision thereunder. This Agreement may be executed in counterparts, each of which shall be deemed an original, but all of which together shall be deemed to me one and the same agreement. A signed copy of this Agreement delivered by facsimile, e-mail or other means of electronic transmission shall be deemed to have the same legal effect as delivery of an original signed copy of this Agreement.

A signed copy of this document must be sent with all new submissions. Only one Agreement is required per submission.

### CORRESPONDING AUTHOR

Name:	Christine S Cheng
Department:	Department of Biology and Program in Bioinformatics
Institution:	Boston University
Title:	Assistant Professor of Biology
Signature:	
Date:	9/18/2018

Please submit a **signed** and **dated** copy of this license by one of the following three methods:

1. Upload an electronic version on the JoVE submission site
2. Fax the document to +1.866.381.2236
3. Mail the document to JoVE / Attn: JoVE Editorial / 1 Alewife Center #200 / Cambridge, MA 02140



**Boston University** College of Arts and Sciences  
Department of Biology

5 Cummington Mall  
Boston, Massachusetts 02215

Christine Cheng Ph.D.



Vineeta Bajaj, Ph.D.  
Review Editor  
Journal of Visualized Experiments

October 30<sup>th</sup>, 2018

Dr. Vineeta Bajaj,

We thank the editors and reviewers for their constructive comments on the manuscript and have made edits to address their points.

In particular, all commercial language has been removed from the manuscript and confined to the Table of Materials.

We believe the manuscript is now suitable for publication in JOVE.

Thank you.

Christine Cheng



Assistant Professor  
Department of Biology  
Boston University

## ***Editorial Comments***

***UPDATED 11/5/18***

*1. The editor has formatted the manuscript to match the journal's style. Please retain the same.*

We thank the editor for these corrections.

*2. Please address all the specific comments marked in the manuscript.*

These comments have been addressed in the manuscript or here in the rebuttal.

*3. Please change the title to reflect the highlighted portion of the protocol.*

The emphasis on low mitochondrial DNA contamination in the title is necessary. Modifications to the original ATAC-seq protocol that we demonstrate are all aimed towards this goal of reducing mitochondrial contamination, and will be the primary interest for readers. We have deleted a description of ATAC-seq from the title instead to make is shorter.

*4. Notes cannot be filmed hence highlighting is removed. Highlights are adjusted to form a cohesive story. Please check.*

The highlighted script forms a cohesive story.

*5. Please refer to the figures in the order of their numbering. So figure 1 should be referred before 2 and so on. Please do the same with the tables as well.*

Thank you for bringing this to our attention. The error has been fixed.

*6. Please include a title and a description of each figure and/or table. All figures and/or tables showing data must include measurement definitions, scale bars, and error bars (if applicable).*

A title has been clarified or each figure and table.

*1. Please take this opportunity to thoroughly proofread the manuscript to ensure that there are no spelling or grammar issues.*

The manuscript has been carefully reviewed.

*2. Please obtain explicit copyright permission to reuse any figures from a previous publication. Explicit permission can be expressed in the form of a letter from the editor or a link to the editorial policy that allows re-prints. Please upload this information as a .doc or .docx file to your Editorial Manager account. The Figure must be cited appropriately in the Figure Legend, i.e. "This figure has been modified from [citation]."*

Copyright permission has been obtained and a link to the editorial policy to allow re-prints uploaded to the Editorial Manager account. Figure legends are cited appropriately.

*3. Figure 1: Please remove commercial language (Tween20).*

Commercial language has been removed.

*4. Figure 4: Please change the time unit "hr" to "h".*

Time unit has been corrected.

*5. Please upload each Table individually to your Editorial Manager account as an .xls or .xlsx file.*

Apologies for the confusion on this point, tables have been uploaded as separate documents to the Editorial Manager.

*6. Tables: Please use the micro symbol  $\mu$  instead of u and use the temperature unit ( $^{\circ}\text{C}$ ) instead of "C".*

Micro symbols and temperature units have been corrected.

*7. Table of Equipment and Materials: Please sort the items in alphabetical order according to the Name of Material/ Equipment.*

Table of Materials has been sorted alphabetically.

*8. Please provide an email address for each author.*

An email address has been provided for each author.

*9. Keywords: Please remove commercial language (Tween20, Illumina). Please ensure that there are at least 6 keywords or phrases.*

Commercial language has been removed, there are 6 keywords or phrases.

*10. Summary: Please rephrase to clearly describe the protocol.*

The summary has been rewritten to more clearly describe the protocol.

*11. Please define all abbreviations before use.*

All abbreviations are now defined before use.

*12. JoVE cannot publish manuscripts containing commercial language. This includes trademark symbols (™), registered symbols (®), and company names before an instrument or reagent. Please remove all commercial language from your manuscript and use generic terms instead. All commercial products should be sufficiently referenced in the Table of Materials and Reagents. You may use the generic term followed by "(see table of materials)" to draw the readers' attention to specific commercial names. Examples of commercial sounding language in your manuscript are: Tween20, Illumina, RosetteSep, STEMCELL Technologies Inc., cryotubes, Dynabeads, Invitrogen, Life Technologies, DynaMagnet, Qiagen MinElute, Agilent, etc.*

All commercial language has been removed from the manuscript and contained to the Table of Materials.

*13. 3.1.3: What is used to wash and what volume? Please specify.*

This step has been rewritten for clarity.

*14. 4.2.3.1: What is washed?*

This step has been rewritten for clarity.

*15. Please combine some of the shorter Protocol steps so that individual steps contain 2-3 actions and maximum of 4 sentences per step.*

The protocol steps have been reworked to combine shorter steps and provide more clarity.

*16. There is a 2.75 page limit for filmable content. Please highlight 2.75 pages or less of the Protocol (including headings and spacing) that identifies the essential steps of the protocol for the video, i.e., the steps that should be visualized to tell the most cohesive story of the Protocol.*

Less than 2.75 pages of protocol has been highlighted for filmable content.

*17. Discussion: Please discuss any limitations of the technique.*

The current limitations of the protocol are now more clearly highlighted as a discussion on the necessity of re-optimizing the protocol if used with other cell types or cell volumes, and in different contexts, such as single cell RNA-seq.

*Reviewer #1 Comments:*

*In Figure 2, the large DNA fragment around 1000kb is not typical in ATAC-seq library and might be misleading. I suggest author to provide several more image to help readers have a better idea of how ATAC-seq library looks like.*

We agree that the large DNA fragment around 1000 kb is not typical in an Agilent BioAnalyzer trace of ATAC-seq libraries. However, the traces presented in this paper are from the Agilent TapeStation, and often show such a band at 1000 kb. This is because the sizing range of the High Sensitivity D1000 ScreenTape we use from TapeStation only go up to 1,000 bp, any DNA fragments bigger than 1000bp is compressed into the dark band that's shown at 1,000 to 1,500bp (the upper marker). Thus this is due to the limitation of the TapeStation not the quality of our ATAC-seq libraries. All quality control of the samples presented in the paper was done with Agilent TapeStation. We also agree that more examples are warranted, and at the reviewer's suggestion have provided two samples' gel electropherograms and traces to give readers a better idea of what to expect from their ATAC-seq libraries.

*In Figure3, only one result from improved protocol are shown. As author did a bunch of experiments, it is necessary to show the results from several replicates to demonstrate the reproducibility of method.*

We have included a figure on biological replicates to demonstrate the reproducibility of the method.

*As several previous publications addressed this question in other ways, it is important to discuss and compare them in the discussion part (Wu, J. et al. 2016, Nature; Corces, MR. et al.*

*2017, Nature Method).*

We thank the reviewer for reminding us of these papers and the methods they employed to address the question of mitochondrial contamination, and we have included them in our discussion.





10/30/2018

RightsLink®

Rightslink® by Copyright Clearance Center

Home

Create Account

Help



SPRINGER NATURE

**Title:** Genetic determinants of coaccessible chromatin regions in activated T cells across humans

**Author:** Rachel E. Gate et al

**Publication:** Nature Genetics

**Publisher:** Springer Nature

**Date:** Jul 9, 2018

Copyright © 2018, Springer Nature

## LOGINLOGIN

If you're a **copyright.com user**, you can login to RightsLink using your copyright.com credentials.

Already a **RightsLink user** or want to [learn more?](#)

### Author Request

If you are the author of this content (or his/her designated agent) please read the following. If you are not the author of this content, please click the Back button and select no to the question "Are you the Author of this Springer Nature content?".

Ownership of copyright in original research articles remains with the Author, and provided that, when reproducing the contribution or extracts from it or from the Supplementary Information, the Author acknowledges first and reference publication in the Journal, the Author retains the following nonexclusive rights:

To reproduce the contribution in whole or in part in any printed volume (book or thesis) of which they are the author(s).

The author and any academic institution, where they work, at the time may reproduce the contribution for the purpose of course teaching.

To reuse figures or tables created by the Author and contained in the Contribution in oral presentations and other works created by them.

To post a copy of the contribution as accepted for publication after peer review (in locked Word processing file, of a PDF version thereof) on the Author's own web site, or the Author's institutional repository, or the Author's funding body's archive, six months after publication of the printed or online edition of the Journal, provided that they also link to the contribution on the publisher's website. Authors wishing to use the published version of their article for promotional use or on a web site must request in the normal way.

If you require further assistance please read Springer Nature's online [author reuse guidelines](#).

For full paper portion: Authors of original research papers published by Springer Nature are encouraged to submit the author's version of the accepted, peer-reviewed manuscript to their relevant funding body's archive, for release six months after publication. In addition, authors are encouraged to archive their version of the manuscript in their institution's repositories (as well as their personal Web sites), also six months after original publication.

v1.0

BACK

CLOSE WINDOW

