

Journal of Visualized Experiments

Manipulation of gene function in Mexican cavefish

--Manuscript Draft--

Article Type:	Methods Article - JoVE Produced Video
Manuscript Number:	JoVE59093R2
Full Title:	Manipulation of gene function in Mexican cavefish
Keywords:	cavefish, CRISPR, gene-editing, transgenesis, morpholino, knockdown
Corresponding Author:	Erik Rolando Duboue, Ph.D. Florida Atlantic University Jupiter, FL UNITED STATES
Corresponding Author's Institution:	Florida Atlantic University
Corresponding Author E-Mail:	eduboue@fau.edu
Order of Authors:	Bethany A. Stahl James B. Jaggard Jacqueline S.R. Chin Johanna E. Kowalko Alex C. Keene Erik Rolando Duboue, Ph.D.
Additional Information:	
Question	Response
Please indicate whether this article will be Standard Access or Open Access.	Standard Access (US\$2,400)
Please indicate the city, state/province, and country where this article will be filmed . Please do not use abbreviations.	Jupiter, FL U.S.A.

TITLE:

Manipulation of Gene Function in Mexican Cavefish

AUTHORS AND AFFILIATIONS:

Bethany A. Stahl^{1,2}, James B. Jaggard^{1,2}, Jacqueline S.R. Chin^{1,2}, Johanna E. Kowalko^{2,3}, Alex C. Keene^{1,2}, Erik R. Duboué^{2,3}

¹Department of Biological Sciences, Florida Atlantic University, Jupiter, FL, USA

²Jupiter Life Science Initiative, Florida Atlantic University, Jupiter, FL, USA

³Harriet L. Wilkes Honors College, Florida Atlantic University, Jupiter, FL, USA

Corresponding author:

Erik R. Duboué (eduboue@fau.edu)

Email addresses of co-authors:

Bethany A. Stahl (bstahl@fau.edu)

James B. Jaggard (jjaggard2015@fau.edu)

Jacqueline S.R. Chin (chin@fau.edu)

Johanna E. Kowalko (jkowalko@fau.edu)

Alex C. Keene (keenea@fau.edu)

KEYWORDS:

cavefish, CRISPR, gene-editing, transgenesis, morpholino, knockdown

SUMMARY:

We describe approaches for the manipulation of genes in the evolutionary model system *Astyanax mexicanus*. Three different techniques are described: Tol2-mediated transgenesis, targeted manipulation of the genome using CRISPR/Cas9, and knockdown of expression using morpholinos. These tools should facilitate the direct investigation of genes underlying the variation between surface- and cave-dwelling forms.

ABSTRACT:

Cave animals provide a compelling system for investigating the evolutionary mechanisms and genetic bases underlying changes in numerous complex traits, including eye degeneration, albinism, sleep loss, hyperphagia, and sensory processing. Species of cavefish from around the world display a convergent evolution of morphological and behavioral traits due to shared environmental pressures between different cave systems. Diverse cave species have been studied in the laboratory setting. The Mexican tetra, *Astyanax mexicanus*, with sighted and blind forms, has provided unique insights into biological and molecular processes underlying the evolution of complex traits and is well-poised as an emerging model system. While candidate genes regulating the evolution of diverse biological processes have been identified in *A. mexicanus*, the ability to validate a role for individual genes has been limited. The application of transgenesis and gene-editing technology has the potential to overcome this significant impediment and to investigate the mechanisms underlying the evolution of complex traits. Here,

we describe a different methodology for manipulating gene expression in *A. mexicanus*. Approaches include the use of morpholinos, *Tol2* transgenesis, and gene-editing systems, commonly used in zebrafish and other fish models, to manipulate gene function in *A. mexicanus*. These protocols include detailed descriptions of timed breeding procedures, the collection of fertilized eggs, injections, and the selection of genetically modified animals. These methodological approaches will allow for the investigation of the genetic and neural mechanisms underlying the evolution of diverse traits in *A. mexicanus*.

INTRODUCTION:

Since Darwin's *Origin of Species*¹, scientists have gained profound insights into how traits are shaped evolutionarily in response to defined environmental and ecological pressures, thanks to cave organisms². The Mexican tetra, *A. mexicanus*, consists of eyed ancestral 'surface' populations that inhabit rivers throughout Mexico and southern Texas and of at least 29 geographically isolated populations of derived cave morphs inhabiting the Sierra del Abra and other areas of Northeast Mexico³. A number of cave-associated traits have been identified in *A. mexicanus*, including altered oxygen consumption, depigmentation, loss of eyes, and altered feeding and foraging behavior^{4–9}. *A. mexicanus* presents a powerful model for investigating mechanisms of convergent evolution due to a well-defined evolutionary history, a detailed characterization of ecological environment, and the presence of independently evolved cave populations^{10,11}. Many of the cave-derived traits that are present in cavefish, including eye loss, sleep loss, increased feeding, loss of schooling, reduced aggression, and reduced stress responses, have evolved multiple times through independent origins, often utilizing different genetic pathways between caves^{8,12–15}. This repeated evolution is a powerful aspect of the *A. mexicanus* system and can provide insight into the more general question of how genetic systems may be perturbed to generate similar phenotypes.

While the application of genetic technology for the mechanistic investigation of gene function has been limited in many fish species (including *A. mexicanus*), recent advances in the zebrafish provide a basis for genetic technology development in fish^{16–20}. Numerous tools are widely used in zebrafish to manipulate gene expression, and the implementation of these procedures have long been standardized. For example, the injection of morpholino oligos (MOs) at the single-cell stage selectively blocks RNA and prevents translation for a brief temporal window during development^{21,22}. In addition, gene-editing approaches, such as clustered regularly interspaced short palindromic repeats (CRISPR)/CRISPR-associated protein 9 (Cas9) and transcription activator-like effector nuclease (TALEN), allow for the generation of defined deletions or, in some cases, insertions through a recombination in genomes^{19,20,23,24}. Transgenesis is used to manipulate stable gene expression or function in a cell-type specific manner. The *Tol2* system is used effectively to generate transgenic animals by coinjecting transposase mRNA with a *Tol2* DNA plasmid containing a transgene^{25,26}. The *Tol2* system utilizes the *Tol2* transposase of medaka to generate stable germline insertions of transgenic construct¹⁷. Generating *Tol2* transgenics involves coinjecting a plasmid containing a transgene flanked by *Tol2* integration sites and mRNA for *Tol2* transposase¹⁷. This system has been used to generate an array of transgenic lines in zebrafish and its use has recently expanded to additional emergent model systems, including cichlids, killifish, the stickleback, and, more recently, the Mexican cavefish^{27–30}.

While the cavefish is a fascinating biological system for elucidating mechanisms of trait evolution, its full capability as an evolutionary model has not been fully harnessed. This has partially been due to an inability to manipulate genetic and cellular function directly³¹. Candidate genes regulating complex traits have been identified using quantitative trait loci (QTL) studies, but the validation of these candidate genes has been difficult^{32–34}. Recently, transient knockdown using morpholinos, gene editing using CRISPR and TALEN systems, and the use of *To/2*-mediated transgenesis have been used to investigate the genetic basis underlying a number of traits^{35–38}. The implementation and standardization of these techniques will allow for manipulations that interrogate the molecular and neural underpinnings of biological traits, including the manipulation of gene function, the labeling of defined cell populations, and the expression of functional reporters. Whereas the successful implementation of these genetic tools to manipulate gene or cellular function has been demonstrated in emergent model systems, detailed protocols are still lacking in *A. mexicanus*.

A. mexicanus provide critical insight into the mechanisms of evolution in response to a changing environment and present the opportunity to identify novel genes regulating diverse traits. A number of factors suggest that *A. mexicanus* is an extremely tractable model for applying established genomic tools currently available in established genetic models, including the ability to easily maintain fish in the laboratories, large brood size, transparency, a sequenced genome, and defined behavioral assays³⁹. Here, we describe a methodology for the use of morpholinos, transgenesis, and gene editing in surface and cave populations of *A. mexicanus*. The broader application of these tools in *A. mexicanus* will allow for a mechanistic investigation into the molecular processes underlying the evolution of developmental, physiological, and behavioral differences between cavefish and surface fish.

PROTOCOL:

1. Morpholino oligo design

NOTE: Sequences for *A. mexicanus* are available through National Center of Biotechnology Information (NCBI) Gene and NCBI SRA (<https://www.ncbi.nlm.nih.gov>), as well as from the Ensembl genome browser (<https://www.ensembl.org>). When designing a morpholino for use in both surface- and cave-dwelling forms, it is critical to identify any genetic variation between the morphs at this stage, so these genetic regions can be avoided as targets for morpholinos. Any polymorphic variation within a morpholino target site can lead to ineffective binding. The design is similar to other fish systems, such as zebrafish, and has previously been shown to work effectively in *A. mexicanus*^{21,36,40}.

1.1. Design of translation-blocking morpholinos

NOTE: Translation-blocking morpholinos block translation by binding to the endogenous start site and impede translational machinery from binding the mRNA sequence through steric hinderance.

1.1.1. Identify the coding region of the target gene starting with the ATG start site.

1.1.2. Record the first 25 base pairs of the target sequence by copy-and-pasting the sequence in a text editor or lab notebook.

1.1.3. Using either online software (e.g., <http://reverse-complement.com>) or manual translation, generate the reverse complement of the target sequence. Save the resulting reverse complement in a text editor or lab notebook.

1.1.4. Order a morpholino with the reverse complement sequence from a company that generates morpholino oligonucleotides. See **Table of Materials** for companies.

1.2. Design of splice-blocking morpholinos

NOTE: Splice-blocking morpholinos block splicing and, thus, prevent the formation of a mature mRNA molecule. This provides an alternative method for knockdown when the start sites are not well-defined, or a more optimal approach when validation of knockdown via polymerase chain reaction (PCR) is desired. This benefit of splice-blocking morpholinos (over ATG-blocking MOs) is that exon exclusion or intron inclusion can be readily assessed with reverse transcriptase (RT)-PCR and size differences visualized on a gel. RT-PCR and gel electrophoresis to determine morpholino efficacy should be done using standard laboratory procedures.

1.2.1. Identify the pre-mRNA sequence of the target gene. Utilize available information from the *A. mexicanus* genome via NCBI or Ensembl to determine intron-exon boundaries³³.

1.2.2. Target exon-intron (splice donor) or intron-exon boundary (splice acceptor) sites for intron inclusion or exon exclusion.

NOTE: The spliceosome normally targets a “GU” sequence (U1 target) in the intron at the 5' splice site and an “AG” sequence at the 3' (U2 target) intronic splice site. Under normal conditions, the spliceosome U1 and U2 subunits bind these target sites on the pre-mRNA sequence for proper splicing to occur. However, if either of these target sequences is blocked by a morpholino, the spliceosome will move on to the next available U1 or U2 site, causing either an intron exclusion or exon in the mRNA sequence. This will involve planning/optimization, depending on the nature of the target gene²¹. Generally, blocking an internal U1 site redirects the splice to the next available U1 site, causing an exon excision. Alternatively, blocking the first or last splice junction causes an intron inclusion because there is no other site to redirect the splice to. Use sequence software to predict the effect of various exclusions versus inclusions. Predictions can indicate potential frameshifts or premature stop codons, indicating a more effective target site for mRNA disruption.

1.2.3. Once the target site is identified, record its sequence in a text editor or lab book. Make sure the target site is 25 base pairs (bp) long.

1.2.4. Using either online software (e.g., <http://reverse-complement.com>) or manual translation, generate the reverse complement of the target sequence. Record its sequence in a text editor or lab book.

1.2.5. Order a morpholino with the reverse complement sequence from a company that generates morpholino oligonucleotides. See **Table of Materials** for sample companies.

2. Morpholinos for injection

NOTE: Several concentrations or volumes of MO injection will need to be performed to establish the optimal concentration to inject. Typical injections quantities are 400–800 pg of MO. The effect of morpholino knockdown can persist for up to 6 days postinjection.

2.1. Obtain the stock morpholino. The stock morpholino arrives lyophilized. Hydrate it with sterile H₂O prior to use at the desired stock concentration (e.g., 4 mM). Store at -20 °C until use.

3. CRISPR gRNA design, in vitro transcription, and preparation

3.1. CRISPR gRNA design

NOTE: gRNAs were generated using previously published research by Varshney et al.⁴⁰ and Wiersen et al.⁴¹.

3.1.1. Using a genome browser, identify the coding region of the gene of interest. Using the genomic sequence, identify the gRNA target sequence within an exon by searching for a 20 bp nucleotide target sequencing beginning with GG and followed by a PAM sequence (NGG). A region of the gene after the start (ATG) will be targeted.

NOTE: If a target sequence with GG at the 5' end cannot be found in the desired exon of the gene, one or both of the G's can be substituted for the first and second nucleotides at the 5' end of the sequence. However, the two G's must be incorporated in the oligo, as these are required for T7 transcription.

3.1.2. Design and order a gene-specific oligonucleotide (oligo A: 5'-TAATACGACTCACTATAG**GGNNNNNNNNNNNNNNNNNN**GTTTTAGAGCTAGAAATAGC-3'). Add the gene-specific 20 bp gRNA target sequence (bolded) without the PAM sequence between a T7 promoter sequence (red) and an overlap sequence used to anneal to a second oligonucleotide (blue). Anneal and amplify (see step 3.2.1) this oligo A and a second oligo (oligo B: 5'-GATCCGCACCGACTCGGTGCCACTTTTTCAAGTTGATAACGGACTAGCCTTATTTTAACTTGCTATTCTAGCTCTAAAAC-3') to generate the gRNA template used for transcription.

NOTE: Oligo B is the same for every reaction and need only be ordered 1x.

3.2. gRNA preparation and transcription

3.2.1. Anneal and amplify the oligos. Include the following primers to amplify the gRNA in order to increase yield: 5'-TAATACGACTCACTATA-3' (T7 primer) and 5'- GATCCGCACCGACTCGGTG-3' (3' gRNA primer). Perform a PCR using *Thermococcus kodakaraensis* (KOD) polymerase.

NOTE: For both primers in oligo A and oligo B, 10 cycles is recommended for a good yield. A detailed protocol can be found in Wiersen et al.⁴¹.

3.2.2. Transcribe the gRNA using commercially available in vitro transcription kits (see **Table of Materials**). This is done through modifications to the manufacturer's protocol published by Klaassen et al.⁴².

3.2.3. Precipitate, wash, and resuspend the gRNA as described by Klaassen et al.⁴².

NOTE: The gRNA must be resuspended in RNase-free water to prevent degradation.

3.2.4. Record the concentration of the gRNA, which can be determined using a spectrophotometer. Assess the quality of the RNA by running 2 µL on an agarose gel. Aliquot RNA to avoid freeze/thaw and store it at -80 °C until immediately before the injections.

3.3. Cas9 preparation and transcription

3.3.1. Cas9 mRNA can be transcribed using commercially available in vitro transcription kits (see **Table of Materials**) as described previously⁴³. Use the nls-Cas9-nls version⁴³.

3.3.2. Record the concentration of the gRNA and assess its quality by running 2 µL on an agarose gel. Aliquot RNA to avoid decomposition that arises through multiple freeze-thaw cycles, and store the aliquots at -80 °C.

4. Preparation of Tol2 constructs, Tol2 transposase, and transgenesis

4.1. Prepare Tol2 transgene constructs for injection.

NOTE: We have successfully utilized published/available zebrafish and medaka constructs in *A. mexicanus*. These constructs are fully functional in *A. mexicanus*, likely because of the high level of sequence homology (refer to the AddGene repository and the Zebrafish Information Network [ZFIN] databases for available constructs). The zebrafish promoter fragments have expressed the transgenes in the expected tissues when used in *A. mexicanus*.

4.1.1. Acquire Tol2 constructs or generate plasmid with a tissue-specific promoter, the desired transgene, and Tol2 arms (see Kwan et al.⁴⁴). Upon receipt, sequence the construct to validate the plasmid.

4.1.2. Perform a midiprep for constructs according to the manufacturer's guidelines. Elute the final plasmid in RNase-free H₂O, determine the concentration with a spectrophotometer, dilute the concentration to 100–300 ng/μL, and aliquot and store the constructs at -20 °C.

4.2. Digest Tol2 transposase plasmid, and synthesize mRNA.

4.2.1. Obtain a copy of the Tol2 transposase plasmid (pCS-zT2TP) as a template for generating Tol2 mRNA⁴⁵.

4.2.2. Midiprep the pCS-zT2TP construct according to the manufacturer's guidelines. Elute it in a low volume of RNase-free water or buffer (~50 μL). Store the aliquots at -20 °C.

4.2.3. Digest the Tol2 plasmid using a restriction enzyme.

4.2.3.1. Perform a restriction digest on 10 μg of circular pCS-zT2TP plasmid using **Table 1**.

4.2.3.2. Split the reaction into 2–50 μL reactions and incubate the reactions overnight at 37 °C in a thermal cycler.

4.2.3.3. On the following day, inactivate the enzyme by heating it to 65 °C for 20 min.

4.2.3.4. Purify linearized plasmid immediately following the digest, using commercially available PCR purification kits (see **Table of Materials**) per the manufacturers' guidelines. Elute the plasmid in 15 μL of RNase-free H₂O and determine the concentration of the product using a spectrophotometer.

4.2.3.5. Run 1 μL of digested plasmid and 1 μL of uncut plasmid on a 1.5% agarose gel to confirm linearized plasmid.

4.2.4. Perform an in vitro transcription of Tol2 mRNA.

4.2.4.1. Utilize 1 μg of linearized pCS-zT2TP plasmid as a template for transcription. Follow the manufacturer's guidelines for in vitro transcription (see **Table of Materials**) as described in **Table 2**.

4.2.4.2. Incubate at 37 °C in a thermal cycler per the manufacturer's guidelines.

4.2.4.3. Add 1 μL of DNase, incubate it at 37 °C in a thermal cycler per the manufacturer's guidelines.

4.2.4.4. Perform lithium chloride precipitation per transcription kit protocol. Resuspend the RNA pellet in ~20–30 μL of RNase-free H₂O.

4.2.4.5. Determine the concentration of the product by using a spectrophotometer and record the RNA quality.

4.2.4.6. Dilute the product to ~100–300 ng/μL and aliquot it into 5–10 μL samples to avoid repeated freeze-thaw. Store them at -80 °C until use.

NOTE: It is possible to check 1–2 μL of purified Tol2 mRNA for smear/band with gel electrophoresis.

5. Microinjections

5.1. Preparation of general tools for injections

NOTE: The procedures in this section have been described in detail by Kowalko et al.⁴⁶, and an overview with minor modifications is presented here.

5.1.1. Generate injection plates by pouring warm 3% agarose dissolved in fish system water into a 100 mL Petri dish. Carefully place an egg injection mold in the freshly poured agarose to make wells for the fish eggs. Place the side of the mold in agar at a 45° angle and, then, slowly lower it into the agarose; slowly lowering the mold at an angle avoids air getting trapped underneath the mold. Gently remove the mold once the agarose is solidified. The plates can be stored, sealed, at 4 °C for up to 1 week.

5.1.2. Pull needles from borosilicate glass capillaries for injection in an electrode/needle puller according to the manufacturer's guidelines. This protocol will vary per pipette puller; however, a sample needle-pulling program can be found in **Table 3**.

NOTE: Optimizing the needle is important for injections, as needles that are too long will bend rather than cleanly penetrate the egg.

5.1.3. Make large-bore glass pipettes for the egg transfer by breaking standard glass pipettes so the opening is large enough for the eggs. Using a Bunsen burner, polish the broken end of the glass by exposing the end of the broken pipettes to the flame until it is smooth.

5.2. Breeding setup

NOTE: There are many different protocols used for breeding *A. mexicanus*. For a detailed protocol, see Borowsky³⁹. Start the breeding setup 1 week prior to the injections.

5.2.1. On day 1, place two to three females and three to four males in a single 10 gallon tank maintained at 24 ± 1 °C.

5.2.2. On days 1–7, increase the feeding to ~3x a day. Ensure the diet includes live food, such as black worms and brine shrimp.

5.2.3. On day 6, add a single tank heater set to 27 °C. Lab tank temperatures can vary; therefore, this will be an increase of 2–3 °C relative to the normal tank temperature.

5.2.4. On the evening of day 7, which is the evening (zeitgeber [ZT] 9–11) of injection night, thoroughly clean the tanks with a water-soaked sponge and remove any excess food or debris using a fine mesh net or a siphon.

5.2.5. On the night of day 7, start checking for surface fish eggs at ZT15 and continue to check every 15–30 min until ZT18. For cavefish, start checking for eggs at ZT17 and continue to check every 15–30 min until ZT20.

NOTE: The times are based on a 14:10 h light:dark cycle using zeitgeber time. Breeding times are estimates and individual labs must determine exact times. It is critical to collect eggs soon after they are released/fertilized in order to inject them at the single-cell stage.

5.3. Collection of single-cell stage eggs

5.3.1. The night in which breeding is expected, examine the tanks every 15–30 min and monitor for eggs at the bottom of the tank. Eggs appear translucent, measuring approximately 1 mm in diameter.

5.3.2. Use a fine mesh fish net to collect eggs and transfer them to a glass bowl filled with fresh fish system water. Examine the eggs under a microscope to confirm that the eggs are at the one-cell stage.

5.3.3. Using glass pipettes, transfer single-cell eggs to the injection plates. Glass pipettes are required at this stage as the eggs will stick to plastic.

5.3.4. Using a pipette, carefully release the eggs into the wells of the agarose injection plate from section 5.1. Fill the rows of the prewarmed (at room temperature) injection plate with the maximum number of eggs (30–40 per row, and up to five rows). Full rows help keep the eggs from moving during injections. Keep the eggs hydrated on the injection plate with a small amount of fish system water until the performance of the injections.

5.4. Pico-injection setup and general injection optimization guidelines

5.4.1. Backfill the injection needles using either gel-loading pipette tips that fit inside the capillary or using standard micropipette tips and adding a 2–4 µL bolus to the end. Once the needle is filled, use forceps to trim the excess length from the injection needle.

5.4.2. Perform microinjections using a needle mounted in a micromanipulator, connected to a picoliter microinjector.

5.4.3. Set the injection time to 0.03 s and the pressure out at ~0.0 psi. The injection pressure will vary accordingly with minor differences between needles, so optimize to achieve a ~1.0 nL injection bolus.

NOTE: The injection pressure is often in the range of ~10–30 psi.

5.4.5. Standardize the injection bolus by injecting into mineral oil and measuring the bolus size with a slide micrometer to achieve a ~1–1.5 nL injection volume. Adjust the injection pressure (psi) to increase or decrease the bolus volume.

5.4.6. Draw water off of the very top of the eggs using a lab tissue.

NOTE: The *Astyanax* egg chorion is slightly tougher to penetrate than zebrafish eggs. We find that drawing the water off of the top of the eggs helps facilitate needle penetration into the egg. Plate optimization can allow for ~200 eggs on a single plate.

5.4.7. Use the micromanipulator to penetrate each egg with the needle, and inject directly into the yolk. Once positioned in the yolk, inject the egg by pressing the inject button or injection foot pedal.

NOTE: A full plate can be injected within ~15 min. The single-cell stage lasts for ~40 min.

5.5. Injection of morpholinos

NOTE: The amount of morpholino necessary for knockdown without causing toxicity will need to be optimized per gene target; however, a concentration of 400 pg is a good place to start.

5.5.1. Prepare morpholino so that 400 pg of morpholino will be injected per egg. Thaw morpholino on ice. The injection solution is comprised of morpholino (at the desired concentration), RNase-free H₂O or Danieau's solution, and phenol red (10% of the final volume). For an example, see Table 4.

5.5.2. Inject 1 nL per embryo.

5.6. CRISPR injections

5.6.1. Prepare RNA so that 25 pg of gRNA and 300 pg of Cas9 mRNA total will be injected per embryo. For a sample CRISPR/Cas9 injection mixture, see Table 5.

5.6.2. Inject 2 nL of gRNA/Cas9 mRNA per embryo directly into the embryo.

5.7. Injection of Tol2 transposase and Tol2-flanked plasmid for transgenesis

5.7.1. Thaw transposase mRNA and Tol2 plasmid on ice. Combine Cas9 mRNA (at 25 ng/μL), desired Tol2 construct (at 25 ng/μL), and phenol red (≤10% of the final volume) in RNase-free water. For a sample Tol2 transgenesis injection mixture, see **Table 6**.

5.7.2. Keep the injection solution and needles on ice to avoid the degradation of mRNA. Inject at 1 nL in volume per embryo.

6. Rearing and screening injected fish

6.1. Injected fish husbandry

6.1.1. After the eggs are injected, immediately transfer them to glass bowls (10 x 5 cm) filled with ~200 mL of fish system water. Eggs are easily rinsed by dipping the injection plates into bowls filled with fish water and rinsing the eggs with a pipette.

6.1.2. Place ~50–80 injected embryos per bowl and rear them at 22–24 °C.

6.1.3. Clean the bowls with injected fish 2x per day to remove dead embryos and change ~20% of the water on a daily basis.

6.1.4. Additional rearing is performed in accordance with previously published protocols³⁹.

6.2. Screening of morpholino-injected individuals

6.2.1. Visualize the animals under a stereomicroscope to screen for phenotypes. The effect of morpholinos can persist up to ~5 days postinjection²¹.

6.2.2. Measure behavioral phenotypes at 4 days postinjection.

6.3. Screening for CRISPR indels

6.3.1. Design primers to amplify genomic DNA around the target site. Design primers so that the target PCR product is approximately 100–125 bp.

NOTE: For example, for the *oca2* locus, the region surrounding the gRNA target site was amplified using the forward primer 5'-CTCCTCTGTCAGGCTGTGC-3' and the reverse primer 5'-GAAGGGGATGTTGTCTATGAGC-3' for a PCR product length of 105 bp.

6.3.2. Sacrifice embryos or fin clip adult fish according to the institutional animal protocol.

6.3.3. Collect embryos or dissected fins into PCR tubes and extract DNA and perform PCRs. Sample PCR protocols for gene-specific primers can be found in Ma et al.³⁵.

6.3.4. To assess for mutagenesis, run 5 μL of PCR product on a 3% agarose gel at 70 V for 3 h.

Wild-type (nonmutagenized) DNA will result in a PCR product as a distinct band. Mutant DNA will result in a smeary band on the gel.

6.3.5. To determine the sequence of mutant alleles, TA clone the PCR product according to the manufacturer's instructions, pick colonies, and miniprep cultures. Send the resulting DNA for sequencing.

6.3.6. To establish and maintain lines of fish transmitting mutant alleles, cross adult injected fish to wild-type fish, and screen 5–10 embryos to determine if any of the progeny carry a mutant allele of the gene following steps 6.3.1-6.3.6.

NOTE: Different F_1 individuals from the same F_0 founder fish can carry different mutations. Ensure mutant lines are sequenced to obtain mutations predicted to produce alleles that are out of frame.

6.3.7. Identify fish carrying a mutant allele by PCR using the smeary band assay (steps 6.3.1-6.3.6) or by designing allele-specific PCR primers that will amplify mutant and wild-type bands (**Figure 2C**).

6.3.8. Once a line of fish is established, homozygote mutant alleles to test for recessive phenotypes.

6.4. Screening for transgenic positive individuals

NOTE: Using constructs containing a fluorescent marker is recommended to streamline the screening for transgenic positive individuals. However, standard PCR screening methods can be used to screen for transmission.

6.4.1. Visualize tissue-specific fluorescent proteins in F_0 fish as early as 2 days postinjection, with an epifluorescence dissecting scope.

NOTE: The expression in F_0 larvae is mosaic, and positive individuals may have a range of expression phenotypes.

6.4.2. Keep positive individuals as F_0 founder fish.

6.4.3. When F_0 s reach maturity, backcross founding fish to nontransgenic individuals derived from the same population/lab stock. Screen F_1 offspring using the same protocol as described in step 6.2.

NOTE: The expression in F_1 larvae is uniform and ensures consistency among F_1 siblings.

6.4.4. Since Tol2 integration is not site-mediated and integration can vary among founders, select F₁ siblings derived a single F₀ founder and interbreed positive-expressing F₁ siblings to generate F₂s. This offspring will be the basis for a stable line.

REPRESENTATIVE RESULTS:

Multiple populations of cave-dwelling *A. mexicanus* show reduced sleep and increased wakefulness/activity relative to their surface-dwelling conspecifics¹⁴. Hypocretin/orexin (HCRT) is a highly conserved neuropeptide, which acts to increase wakefulness, and aberrations in the HCRT pathway cause narcolepsy in humans and other mammals^{47,48}. We have previously demonstrated that cave *A. mexicanus* have increased expression of HCRT peptide, suggesting that an increased expression of this peptide may underlie the loss of sleep in cavefish³⁸. The MO knockdown of *hcrt* expression provides a powerful approach for directly examining the effect of increased *hcrt* expression mediating the loss of sleep in cavefish.

To examine the relationship between *hcrt* expression and sleep, we designed a translation-blocking morpholino. The MO targets the first 25 bp of exon one, including the ATG start site (**Figure 1A,B**). As a control, we utilized a commercially available scrambled MO control (**Figure 1B**). Using the BLAST algorithm on NCBI, we confirmed that there are no off-target effects for either MO throughout the genome (data not shown). *A. mexicanus* surface fish and Pachón cavefish were bred and their eggs were collected and then injected with 400 pg of MO in a 1 nL-volume at the one-cell stage (**Figure 1C,D**). The fish were raised to 4 dpf and then measured for activity and sleep behavior.

Cave *A. mexicanus* injected with the control MO exhibited significantly more locomotor activity and reduced sleep over a 24 h period compared to surface fish also injected with the scrambled MO (**Figure 1E,F**), suggesting no effect of the control morpholino injections as the results are consistent with previously published activity and sleep patterns in each morphotype ($t = 5.021$, $df = 88$, $p < 0.0001$). The injection of the HCRT-MO had little effect on sleep in surface fish compared to control-injected fish ($t = 0.17$, $df = 88$, $p > 0.99$). In contrast, *hcrt* knockdown via MO injection had a significant effect on sleep in cave-dwelling fish. Pachón cavefish larvae showed less than a fourfold reduction in locomotor activity, and sleep nearly two times more than control Pachón larvae (**Figure 1E,F**; $t = 2.694$, $df = 88$, $p < 0.05$). A comparison of locomotor activity and sleep in MO-knockdown surface- and cave-dwelling fish revealed comparable locomotion and sleep amounts (**Figure 1E,F**). These data provide a direct link between *hcrt* expression and sleep loss and provide a method to interrogate the biological mechanisms for loss of sleep in the evolutionarily derived cave-dwelling morphs.

Pigmentation loss is a hallmark of cave organisms, and multiple cave-dwelling *Astyanax* populations demonstrate loss of pigmentation. Albinism in Molino and Pachón cavefish has been mapped using QTL mapping to a genomic region containing the gene, *ocular albinism 2 (oca2)*, suggesting mutations in *oca2* underlie albinism in cavefish⁶.

To validate *oca2* as the causative locus for albinism in Pachón cave morphs, we utilized CRISPR/Cas9 gene editing to mutate this region in surface fish populations. Since exon 21 is

deleted in Molino fish⁶, we designed a gRNA to target this region of the gene (**Figure 2A**). The genomic sequence, including the gRNA target sequence and the PAM (bolded), is 5'-GGTCATGTGGGTCTCAGCTTT**GG**-3'. This target sequence (without the PAM sequence) was used to generate a gRNA for targeted mutagenesis. Surface breeders were made to mate, and the resulting embryos were collected at the one-cell stage. One-cell stage embryos were injected with Cas9 mRNA and gRNA-targeting *oca2*, and the injected animals were raised to adulthood⁴³. The injected adults were made to mate to wild-type surface fish, and the embryos from these crosses were genotyped to determine germ-line transmission, using primers from step 6.3.1. We sequenced a mutant *oca2* allele and identified a germ-line-transmitted 2 bp deletion in *oca2* (**Figure 2B,C**). For ease of genotyping, we designed allele-specific primers to identify the wild-type and mutant alleles (**Figure 2D**) and genotyped fish, using PCR followed by gel electrophoresis (**Figure 2E**). We incrossed surface fish heterozygous for this *oca2* mutant allele. The resulting progeny were pigmented or albino (**Figure 2F-I**). Pigmented individuals were wild-type or heterozygous at the *oca2* locus, while albino individuals were homozygous mutant (**Figure 2E**). These data provide a direct link between the *oca2* gene locus and albinism in *A. mexicanus* cavefish.

Myriad behaviors such as sleep, feeding, and stress differ in *A. mexicanus* cavefish relative to surface conspecifics, yet the underlying neuronal determinants between morphs remain unclear. Whole-brain calcium imaging provides a powerful unbiased approach for examining correlations between altered neural activity and modified behavior. We generated surface fish and cavefish with a near-ubiquitous neuronal expression of the genetically encoded calcium indicator, GCaMP6s, using reagents widely used in zebrafish research. *ELAV-like neuron-specific RNA-binding protein 3* (*elavl3*) is expressed endogenously in newly differentiated neurons throughout the central nervous system⁴⁹ and has been used in zebrafish to drive the expression of proteins throughout the majority of the nervous system⁵⁰. We obtained a Tol2 construct containing ~2.8 kb zebrafish *elavl3* promoter transcription upstream of the genetically encoded calcium indicator GCaMP6s (a fusion of green fluorescent protein [GFP], calmodulin, and M13, a peptide sequence from myosin light-chain kinase), flanked at the 5' and 3' ends with Tol2 sites (Tol2-*elavl3*:GCaMP6s-Tol2)⁵¹.

A. mexicanus surface fish and Molino cavefish were bred, and the resulting embryos were coinjected at the single-cell stage with 25 ng/μL of the Tol2-*elavl3*:GCaMP6s-Tol2 construct and 25 ng/μL Tol2 transposase mRNA (**Figure 3A**). At 24–48 dpf, larvae were screened for a transient neuronal expression of GCaMP6s. Those injected (F₀) embryos with an expression of GCaMP6s were raised to adulthood and backcrossed with wild-type adults derived from the same lineage of surface fish or cavefish. The resulting F₁ adults were screened for a stable expression of GCaMP6s expression, and those larvae were maintained to generate stable lines (**Figure 3B,C**). Because each F₁ adult with a stable expression has likely integrated Tol2-*elavl3*:GCaMP6s-Tol2 at different genomic sites, each F₁ is designated a different allele. Using this approach, we have generated stable F₁s for surface fish and Molino cavefish populations (**Figure 3B,C**), thus enabling live calcium imaging to uncover differences in neuronal activity mediating behavioral changes in the cave environment (**Figure 3C,D**). Further, this approach lays the groundwork for the

expression of many additional transgenes to characterize and manipulate the gene function in *A. mexicanus*.

FIGURE AND TABLE LEGENDS:

Figure 1: Morpholino knockdown of *Hcrt* reduces activity and increases sleep in cavefish. (A) Translation-blocking morpholino targets the first 25 bp of the *Hcrt* coding sequence, including the ATG start site. **(B)** *Hcrt* morpholino oligo (MO) and control sequences. **(C)** Alignment of ~200 single-cell eggs on agarose egg molds for injection. **(D)** Microinjection of 1.0 nL of injection mixture with phenol red indicator for visualization. The scale bar = 0.5 mm. **(E)** Morpholino knockdown of *Hcrt* reduces the activity (total distance traveled) of Pachón cavefish ($t = 5.021$, $df = 88$, $p < 0.0001$) but not of surface fish ($t = 1.318$, $df = 88$, $p > 0.72$). **(F)** Knockdown increases sleep in Pachón cavefish ($t = 2.694$, $df = 88$, $p < 0.05$) but has no effect on surface fish ($t = 0.17$, $df = 88$, $p > 0.99$). The scale bar = 1 mm. The error bars in panels **E** and **F** denote the standard error of the mean.

Figure 2: CRISPR gene-editing of *oca2* introduces albinism in surface-dwelling *A. mexicanus*. (A) Schematic of the *oca2* coding regions, and guide RNA (gRNA) targeting exon 21 for CRISPR-mediated gene editing. **(B)** Sequencing chromatogram of wild-type *Oca2*⁺ and **(C)** mutant *Oca2*⁻ alleles. The red box in panel **B** indicates the 2 bp sequence, which is missing in the mutant *Oca2*⁻ allele depicted in panel **C**. **(D)** Targeted CRISPR introduces a 2 bp deletion, disrupting *Oca2* function. Primers are designed for the genotypic screening of 2 bp deletion in F₀ offspring. **(E)** PCR and gel electrophoresis of *Oca2* in wild-type surface fish (band size = 134 bp) and F₀ CRISPR-injected offspring (band size = 133 bp). Individuals homozygous or heterozygous for the wild-type variant of *Oca2* (*Oca2*⁺) are pigmented, while F₀s homozygous for the 2 bp deletion (*Oca2*⁻) harbor albinism. **(F)** Whole-body images of wild-type surface fish and **(G)** of surface fish with CRISPR-mediated albinism. The scale bar = 5 mm. **(H and I)** Magnified view of the heads of individuals depicted in panels **F** and **G**, respectively. The scale bar = 2 mm.

Figure 3: Tol2 transgenesis of pan-neuronal GCAMP6s enables the live imaging of brain activity in *A. mexicanus*. (A) Tol2-mediated transgenesis in *A. mexicanus*. Coinjection of Tol2 mRNA and Tol2-*elav3l*:GCAMP6s-Tol2 plasmid integrates GCAMP6s transgene in F₀ founders. Backcrossing to the original stock of wild-type fish yields F₁ individuals with a stable pan-neuronal expression of GCAMP6s. **(B and C)** The resulting offspring are screened for a stable expression using dissection and confocal microscopy. Stable *TgAsty(elav3l*:GCAMP6s) F₁ individuals have been established for both surface- (depicted in panel **B**) and cave-dwelling morphotypes (depicted in panel **C**). The scale bar = 200 μm.

Table 1: Restriction digest of Tol2 plasmid.

Table 2: In vitro synthesis of Tol2 mRNA.

Table 3: Sample pipette-pulling protocol.

Table 4: Morpholino injection mixture.

Table 5: Sample CRISPR/Cas9 injection mixture.

Table 6: Sample Tol2 transgenesis injection mixture.

DISCUSSION:

Here, we provided a methodology for manipulating gene function using morpholinos, CRISPR/Cas9 gene editing, and transgenesis methodology. The wealth of genetic technology and the optimization of these systems in zebrafish will likely allow for the transfer of these tools into *A. mexicanus* with ease⁵². Recent findings have used these approaches in *A. mexicanus*, but they remain underutilized in the investigation of diverse morphological, developmental, and behavioral traits in this system^{30,36,42,53}.

Morpholinos have been widely used in zebrafish research to knockdown the expression of genes. The approach is facile and results in a robust knockdown of expression. However, off-target effects have been widely documented^{22,53}; thus, animals in which morpholinos have been injected to should be carefully monitored for any unexpected phenotypes^{22,55}. When possible, results obtained from morpholino knockdown should be validated through the use of other methods, such as CRISPR/Cas9-mediated knockout approaches. While morpholinos allow for the robust knockdown of gene expression, morpholino-mediated knockdown is transient. Thus, analyzing adult phenotypes is not possible when using this method.

CRISPR/Cas9-mediated mutagenesis offers direct manipulation of specific genes. Further, unlike morpholino-mediated knockdown, CRISPR/Cas9 mutagenesis allows for the analysis of mutant phenotypes into adulthood. To prevent off-target effects of CRISPR/Cas9, mutant lines should be outcrossed several generations, and when possible, more than one allele should be obtained and tested. The CRISPR/Cas9 system also provides the potential for utilizing gene-editing approaches to knock-in alleles or to produce specific genetic changes. The CRISPR/Cas9 system has been used in zebrafish to produce precise integrations of exogenous DNA and to generate precise point mutations^{19,20,56–59}. With the sequencing of the cavefish genome, it is now possible to identify single nucleotide polymorphisms (SNPs) or other subtle genetic changes between surface fish and cavefish populations³³. The application of CRISPR/Cas9 gene editing provides the opportunity to exchange alleles between surface fish and cavefish, or between different populations of cavefish, to examine the role of these genetic changes in different developmental processes.

The transgenesis approaches described in this protocol provide a simple and powerful method for gain-of-function studies and for generating tools to alter biological processes genetically. The Tol2 system is widely used in zebrafish research, and we have shown that it is similarly powerful in *A. mexicanus*. Moreover, we demonstrated a transgenic construct generated in zebrafish that utilizes a zebrafish promoter and recapitulates endogenous expression in *A. mexicanus*. We have found four other promoters isolated from zebrafish that drive tissue-specific expression as expected in *A. mexicanus* (data not shown). Since zebrafish promoters recapitulate their conserved expression patterns in *A. mexicanus*, this suggests that many of the genetic tools can

be transferred directly from zebrafish to *A. mexicanus* without the need for modification with *A. mexicanus* promoters. Moreover, with the advance in sequencing technologies in *A. mexicanus*³³, the transgenic approaches described here will permit a powerful future for the investigation of enhancers and promoters that may play a role in the variation between surface and cave forms. Lastly, the powerful tools for the genetic manipulation of biological processes that have made zebrafish valuable are equally important in *A. mexicanus*^{60–63}. Differences in diverse behavioral traits, such as sleep, feeding, stress, and aggression, between *A. mexicanus* surface- and cave-dwelling forms have been extensively documented^{12,14,15,38,64}, yet the underlying neuronal correlates are not well understood. Tools such as *Tg(elavl3:GCaMP6s)* will permit a dissection of how differences in neuronal activity brain-wide correlate with differences in behavior and offer a unique insight into how the brain has been modified evolutionarily.

Taken together, *A. mexicanus* is poised to become a leading model for investigating the evolution of a variety of morphological and behavioral traits. The diverse differences in complex biological processes in *A. mexicanus* provide a platform for investigating genetic mechanisms of trait evolution. The application of tools for manipulating gene function may help develop this organism into a model that can be applied to investigate biological diseases related to eye degeneration, neurodevelopmental abnormalities, and insomnia.

ACKNOWLEDGMENTS:

The authors thank Sunishka Thakur for her assistance in genotyping and imaging the *oca2* mutant fish depicted in **Figure 2**. This work was supported by National Science Foundation (NSF) award 1656574 to A.C.K., NSF award 1754321 to J.K. and A.C.K., and National Institutes of Health (NIH) award R21NS105071 to A.C.K. and E.R.D.

DISCLOSURES:

The authors have nothing to disclose.

REFERENCES:

1. Darwin, C. On the Origin of Species by Means of Natural Selection. *D. Appleton and Company*. doi: 10.1007/s11664-006-0098-9 (1859).
2. Culver, D.C., Pipan, T. *The Biology of Caves and Other Subterranean Habitats*. Oxford University Press. New York, NY (2009).
3. Mitchell, R.W., Russell, W.H., Elliott, W.R. *Mexican Eyeless Characin Fishes, Genus Astyanax: Environment, Distribution, and Evolution*. (1977).
4. Huppopp, K. Oxygen consumption of *Astyanax fasciatus* (Characidae, Pisces): A comparison of epigeal and hypogean populations. *Environmental Biology of Fishes*. **17**, 299–308 (1986).
5. Moran, D., Softley, R., Warrant, E.J. Eyeless Mexican Cavefish Save Energy by Eliminating the Circadian Rhythm in Metabolism. *PLoS ONE*. **9** (9), e107877, doi: 10.1371/journal.pone.0107877 (2014).
6. Protas, M.E. et al. Genetic analysis of cavefish reveals molecular convergence in the evolution of albinism. *Nature genetics*. **38**, 107–111, doi: 10.1038/ng1700 (2006).
7. Wall, A., Volkoff, H. Effects of fasting and feeding on the brain mRNA expressions of orexin, tyrosine hydroxylase (TH), PYY and CCK in the Mexican blind cavefish (*Astyanax fasciatus*

743 mexicanus). *General and Comparative Endocrinology*. **183**, 44–52, doi:
744 10.1016/j.ygcen.2012.12.011 (2013).

745 8. Aspiras, A., Rohner, N., Marineau, B., Borowsky, R., Tabin, J. Melanocortin 4 receptor mutations
746 contribute to the adaptation of cavefish to nutrient-poor conditions. *Proceedings of the National*
747 *Academy of Sciences*. **112** (31), 9688–9673 (2015).

748 9. Yoshizawa, M., Gorički, Š., Soares, D., Jeffery, W.R. Evolution of a behavioral shift mediated by
749 superficial neuromasts helps cavefish find food in darkness. *Current Biology*. **20** (18), 1631–1636,
750 doi: 10.1016/j.cub.2010.07.017 (2010).

751 10. Jeffery, W.R. Regressive Evolution in *Astyanax* Cavefish. *Annual Review of Genetics*. **43**, 25–
752 47, doi: 10.1146/annurev-genet-102108-134216 (2009).

753 11. Gross, J.B. The complex origin of *Astyanax* cavefish. *BMC Evolutionary Biology*. **12**, 105
754 doi:10.1186/1471-2148-12-105 (2012).

755 12. Elipot, Y., Hinaux, H., Callebert, J., Rétaux, S. Evolutionary shift from fighting to foraging in
756 blind cavefish through changes in the serotonin network. *Current Biology*. **23** (1), 1–10, doi:
757 10.1016/j.cub.2012.10.044 (2013).

758 13. Kowalko, J.E.J. et al. Loss of schooling behavior in cavefish through sight-dependent and sight-
759 independent mechanisms. *Current Biology*. **23** (19), 1874–1883, doi: 10.1016/j.cub.2013.07.056
760 (2013).

761 14. Duboué, E.R.E.R., Keene, A.C.A.C., Borowsky, R.L.R.L. Evolutionary convergence on sleep loss
762 in cavefish populations. *Current Biology*. **21** (8), 671–676, doi: 10.1016/j.cub.2011.03.020 (2011).

763 15. Chin, J.S. et al. Convergence on reduced stress behavior in the Mexican blind cavefish.
764 *Developmental Biology* (2018).

765 16. Scheer, N., Campos-Ortega, J.A. Use of the Gal4-UAS technique for targeted gene expression
766 in the zebrafish. *Mechanisms of Development*. **80** (2), 153–158, doi: 10.1016/S0925-
767 4773(98)00209-3 (1999).

768 17. Kawakami, K., Shima, A., Kawakami, N. Identification of a functional transposase of the Tol2
769 element, an Ac-like element from the Japanese medaka fish, and its transposition in the zebrafish
770 germ lineage. *Proceedings of the National Academy of Sciences*. **97** (21), 11403–11408, doi:
771 10.1073/pnas.97.21.11403 (2000).

772 18. Balciunas, D. et al. Enhancer trapping in zebrafish using the Sleeping Beauty transposon. *BMC*
773 *Genomics*. doi: 10.1186/1471-2164-5-62 (2004).

774 19. Auer, T.O., Duroure, K., De Cian, A., Concordet, J.P., Del Bene, F. Highly efficient CRISPR/Cas9-
775 mediated knock-in in zebrafish by homology-independent DNA repair. *Genome Research*. **24** (1),
776 142–153, doi: 10.1101/gr.161638.113 (2014).

777 20. Kimura, Y., Hisano, Y., Kawahara, A., Higashijima, S.I. Efficient generation of knock-in
778 transgenic zebrafish carrying reporter/driver genes by CRISPR/Cas9-mediated genome
779 engineering. *Scientific Reports*. **4**, doi: 10.1038/srep06545 (2014).

780 21. Bill, B.R., Petzold, A.M., Clark, K.J., Schimmenti, L.A., Ekker, S.C. A Primer for Morpholino Use
781 in Zebrafish. *Zebrafish*. **6** (1), 69–77, doi: 10.1089/zeb.2008.0555 (2009).

782 22. Nasevicius, A., Ekker, S.C. Effective targeted gene “knockdown” in zebrafish. *Nature Genetics*.
783 doi: 10.1038/79951 (2000).

784 23. Sander, J.D. et al. Targeted gene disruption in somatic zebrafish cells using engineered
785 TALENs. *Nature Biotechnology*. doi: 10.1038/nbt.1934 (2011).

786 24. Huang, P. et al. Heritable gene targeting in zebrafish using customized TALENs. *Nature*

Biotechnology. doi: 10.1038/nbt.1939 (2011).

25. Kawakami, K. Transposon tools and methods in zebrafish. *Developmental Dynamics*. **234** (2), 244–254, doi: 10.1002/dvdy.20516 (2005).

26. Urasaki, A., Morvan, G., Kawakami, K. Functional dissection of the Tol2 transposable element identified the minimal cis-sequence and a highly repetitive sequence in the subterminal region essential for transposition. *Genetics*. **174** (2), 639–649, doi: 10.1534/genetics.106.060244 (2006).

27. Juntti, S.A., Hu, C.K., Fernald, R.D. Tol2-Mediated Generation of a Transgenic Haplochromine Cichlid, *Astatotilapia burtoni*. *PLoS ONE*. **8** (10), doi: 10.1371/journal.pone.0077647 (2013).

28. Harel, I., Valenzano, D.R., Brunet, A. Efficient genome engineering approaches for the short-lived African turquoise killifish. *Nature Protocols*. **11** (10), 2010–2028, doi: 10.1038/nprot.2016.103 (2016).

29. Erickson, P.A., Ellis, N.A., Miller, C.T. Microinjection for Transgenesis and Genome Editing in Threespine Sticklebacks. *Journal of Visualized Experiments*. (111), e54055, doi: 10.3791/54055 (2016).

30. Elipot, Y., Legendre, L., Père, S., Sohm, F., Rétaux, S. Astyanax transgenesis and husbandry: how cavefish enters the laboratory. *Zebrafish*. **11** (4), 291–299, doi: 10.1089/zeb.2014.1005 (2014).

31. Keene, A., Yoshizawa, M., McGaugh, S. *Biology and Evolution of the Mexican Cavefish*. Academic Press. New York, NY (2015).

32. Casane, D., Rétaux, S. Evolutionary Genetics of the Cavefish *Astyanax mexicanus*. *Advances in Genetics*. **95**, 117–159, doi: 10.1016/bs.adgen.2016.03.001 (2016).

33. McGaugh, S. et al. The cavefish genome reveals candidate genes for eye loss. *Nature Communications*. **5**, 5307 (2014).

34. Yoshizawa, M. et al. Distinct genetic architecture underlies the emergence of sleep loss and prey-seeking behavior in the Mexican cavefish. *BMC Biology*. **13** (1), doi: 10.1186/s12915-015-0119-3 (2015).

35. Ma, L., Jeffery, W.R., Essner, J.J., Kowalko, J.E. Genome editing using TALENs in blind Mexican cavefish, *Astyanax mexicanus*. *PLoS ONE*. **10** (3), doi: 10.1371/journal.pone.0119370 (2015).

36. Bilandzija, H., Ma, L., Parkhurst, A., Jeffery, W. A potential benefit of albinism in *Astyanax* cavefish: downregulation of the *oca2* gene increases tyrosine and catecholamine levels as an alternative to melanin synthesis. *PLoS ONE*. **8** (11), e80823 (2013).

37. Alie, A. et al. Developmental evolution of the forebrain in cavefish: from natural variations in neuropeptides to behavior. *eLife*. **7**, e32808 (2018).

38. Jaggard, J.B. et al. Hypocretin underlies the evolution of sleep loss in the Mexican cavefish. *eLife*. **7**, e32637, doi: 10.7554/eLife.32637 (2018).

39. Borowsky, R. Handling *Astyanax mexicanus* eggs and fry. *Cold Spring Harbor Protocols*. **3** (11), doi: 10.1101/pdb.prot5093 (2008).

40. Varshney, G.K., Sood, R., Burgess, S.M. Understanding and Editing the Zebrafish Genome. *Advances in Genetics*. **92**, 1–52, doi: 10.1016/bs.adgen.2015.09.002 (2015).

41. Wierson, W.A. et al. GeneWeld: a method for efficient targeted integration directed by short homology. *BioRxiv* (2018).

42. Klaassen, H., Wang, Y., Adamski, K., Rohner, N., Kowalko, J.E. CRISPR mutagenesis confirms the role of *oca2* in melanin pigmentation in *Astyanax mexicanus*. *Developmental Biology*. doi: 10.1016/j.ydbio.2018.03.014 (2018).

43. Jao, L.-E., Wente, S.R., Chen, W. Efficient multiplex biallelic zebrafish genome editing using a CRISPR nuclease system. *Proceedings of the National Academy of Sciences of the United States of America*. **110** (34), 13904–13909, doi: 10.1073/pnas.1308335110 (2013).
44. Kwan, K.M. et al. The Tol2kit: A multisite gateway-based construction Kit for Tol2 transposon transgenesis constructs. *Developmental Dynamics*. **236** (11), 3088–3099, doi: 10.1002/dvdy.21343 (2007).
45. Kawakami, K. et al. A transposon-mediated gene trap approach identifies developmentally regulated genes in zebrafish. *Developmental Cell*. **7** (1), 133–144, doi: 10.1016/j.devcel.2004.06.005 (2004).
46. Kowalko, J., Ma, L., Jeffery, W. Genome Editing in *Astyanax mexicanus* Using Transcription Activator-like Effector Nucleases (TALENs). *Journal of Visualized Experiments*. (112), e54113 (2016).
47. Nishino, S., Ripley, B., Overeem, S., Lammers, G.J., Mignot, E. Hypocretin (orexin) deficiency in human narcolepsy. *Lancet*. doi: 10.1016/S0140-6736(99)05582-8 (2000).
48. Lin, L. et al. The sleep disorder canine narcolepsy is caused by a mutation in the hypocretin (orexin) receptor 2 gene. *Cell*. doi: 10.1016/S0092-8674(00)81965-0 (1999).
49. Park, H.C. et al. Analysis of upstream elements in the HuC promoter leads to the establishment of transgenic Zebrafish with fluorescent neurons. *Developmental Biology*. **227** (2), 279–293, doi: 10.1006/dbio.2000.9898 (2000).
50. Higashijima, S. Masino, M.A., Mandel, G., Fetcho, J.R. Imaging Neuronal Activity During Zebrafish Behavior With a Genetically Encoded Calcium Indicator. *Journal of Neurophysiology*. doi: 10.1152/jn.00576.2003 (2003).
51. Vladimirov, N. et al. Light-sheet functional imaging in fictively behaving zebrafish. *Nature Methods*. **11** (9), 883–884, doi: 10.1038/nmeth.3040 (2014).
52. Halpern, M.E. et al. Gal4/UAS transgenic tools and their application to zebrafish. *Zebrafish*. **5** (2), 97–110, doi: 10.1089/zeb.2008.0530 (2008).
53. Jaggard, J.B., Stahl, B.A., Lloyd, E., Prober, D.A., Duboue, E.R., Keene, A.C. Hypocretin underlies the evolution of sleep loss in the Mexican cavefish. *bioRxiv*. **7**, e32637, doi: 10.1101/122903 (2018).
54. Bedell, V.M., Westcot, S.E., Ekker, S.C. Lessons from morpholino-based screening in zebrafish. *Briefings in Functional Genomics*. doi: 10.1093/bfpg/blr021 (2011).
55. Robu, M.E. et al. p53 activation by knockdown technologies. *PLoS Genetics*. doi: 10.1371/journal.pgen.0030078 (2007).
56. Hisano, Y. et al. Precise in-frame integration of exogenous DNA mediated by CRISPR/Cas9 system in zebrafish. *Scientific reports*. **5**, 8841, doi: 10.1038/srep08841 (2015).
57. Prykhodzhiy, S. et al. Optimized knock-in of point mutations in zebrafish using CRISPR/Cas9. *Nucleic Acids Res*. **46** (17) (2018).
58. Tessadori, F. et al. Effective CRISPR/Cas9-based nucleotide editing in zebrafish to model human genetic cardiovascular disorders. *Disease Model Mechanisms*. **11** (10) (2018).
59. Armstrong, G., Liao, M., You, Z., Lissouba, A., Chen, B., Drapeau, P. Homology Directed Knockin of Point Mutations in the Zebrafish *tardbp* and *fus* Genes in ALS Using the CRISPR/Cas9 System. *PLoS ONE*. **11** (3) (2016).
60. Friedrich, R.W., Jacobson, G.A., Zhu, P. Circuit Neuroscience in Zebrafish. *Current Biology*. **20** (8), doi: 10.1016/j.cub.2010.02.039 (2010).

- 875 61. Friedrich, R.W., Genoud, C., Wanner, A.A. Analyzing the structure and function of neuronal
876 circuits in zebrafish. *Frontiers in Neural Circuits*. **7**, doi: 10.3389/fncir.2013.00071 (2013).
- 877 62. Scott, E.K. et al. Targeting neural circuitry in zebrafish using GAL4 enhancer trapping. *Nature*
878 *Methods*. **4** (4), 323–326, doi: 10.1038/nmeth1033 (2007).
- 879 63. Asakawa, K., Kawakami, K. Targeted gene expression by the Gal4-UAS system in zebrafish.
880 *Development Growth and Differentiation*. doi: 10.1111/j.1440-169X.2008.01044.x (2008).
- 881 64. Lloyd, E. et al. Evolutionary shift towards lateral line dependent prey capture behavior in the
882 blind Mexican cavefish. *Developmental Biology*. doi: 10.1016/j.ydbio.2018.04.027 (2018).
- 883

Figure 1

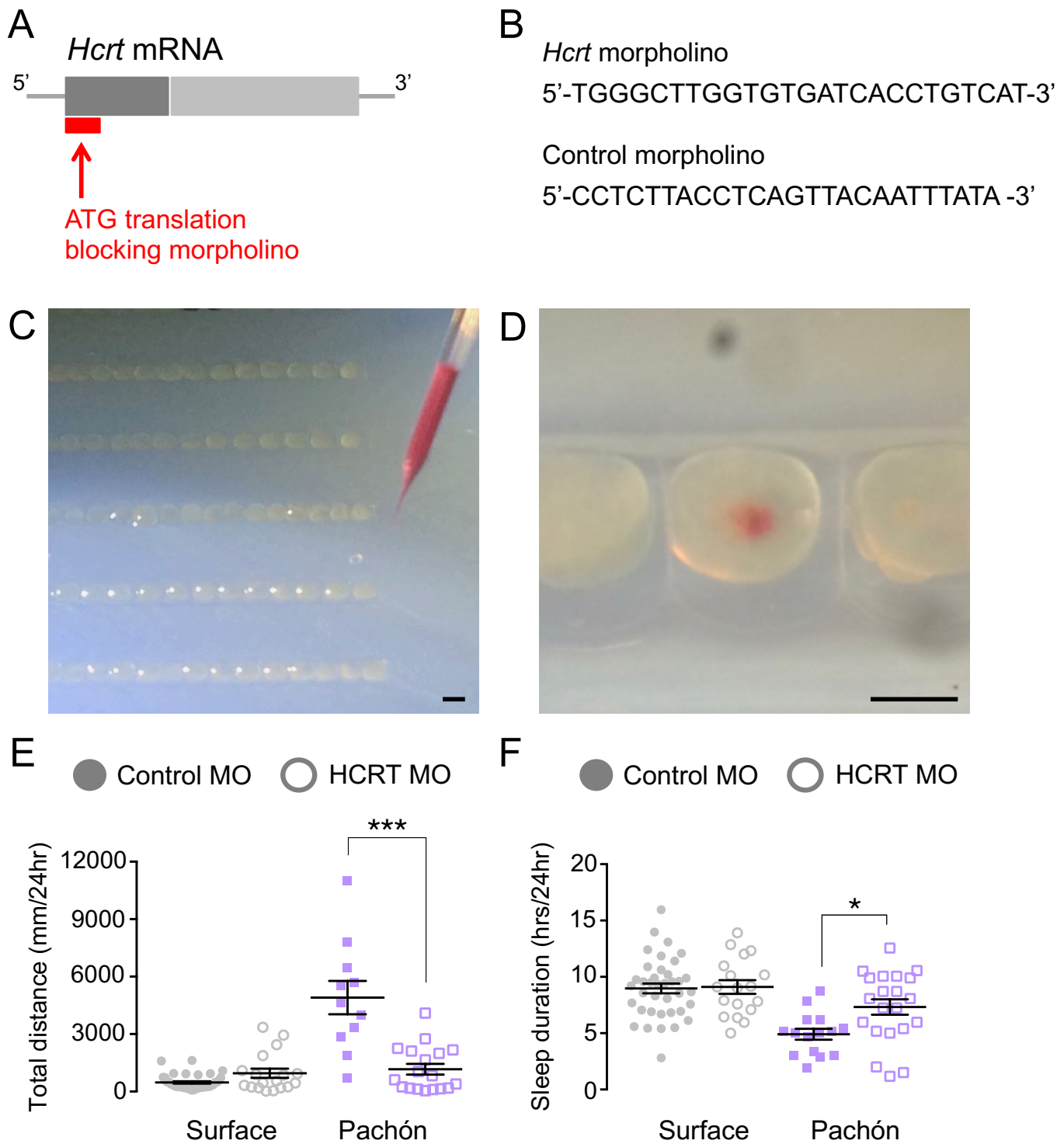
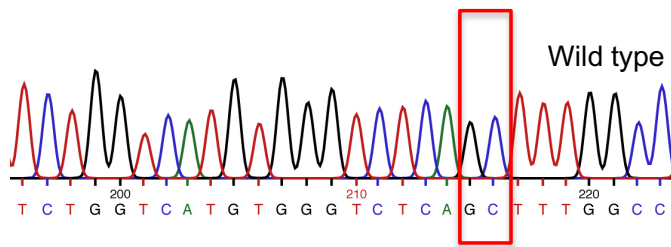


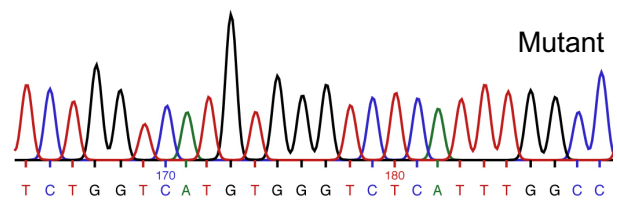
Figure 2

A *Oca2* DNA

B



C



D

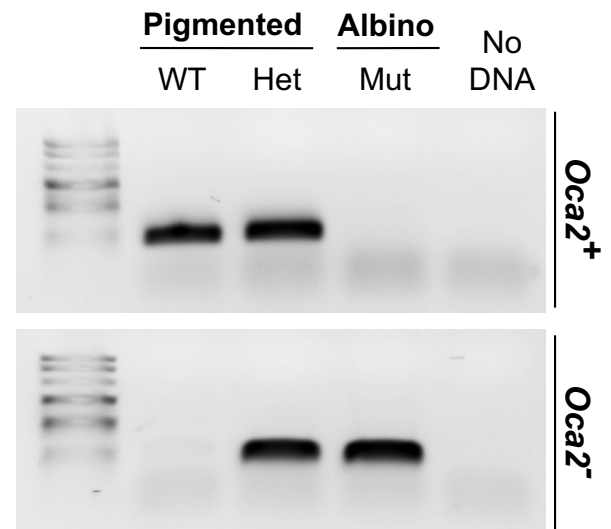
Forward primer 1
(for genotyping wild type allele)

5' -CTGGTCATGTGGGTCTCAGC-3'
 5' -CATTCTGGTCATGTGGGTCTCAGCTTTGGCCT-3' *Oca2*⁺
 5' -CATTCTGGTCATGTGGGTCTCA--TTGGCCT-3' *Oca2*⁻
 5' -TCTGGTCATGTGGGTCTCATT-3'

Forward primer 2
(for genotyping mutant allele)

Reverse primer
(for both reactions)
 5' -GAAGGGGATGTTGTCTATGAGC-3'

E



F



G



H



I



Figure 3

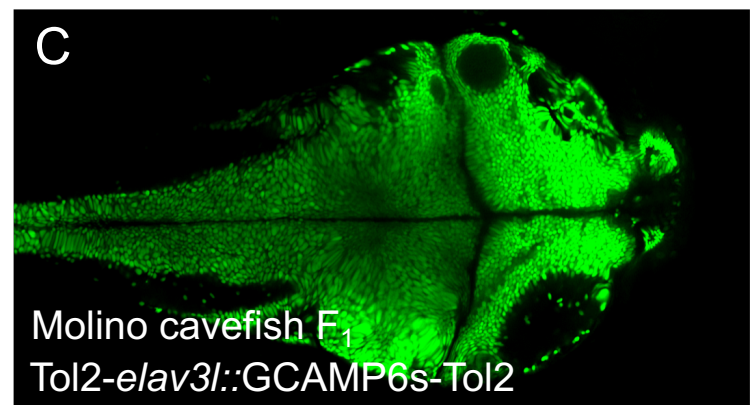
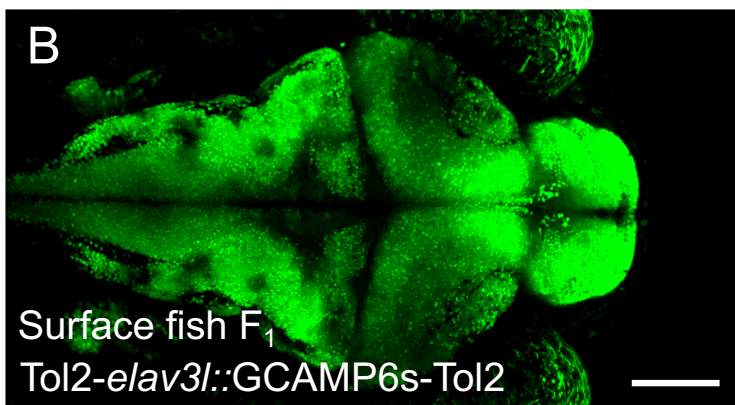
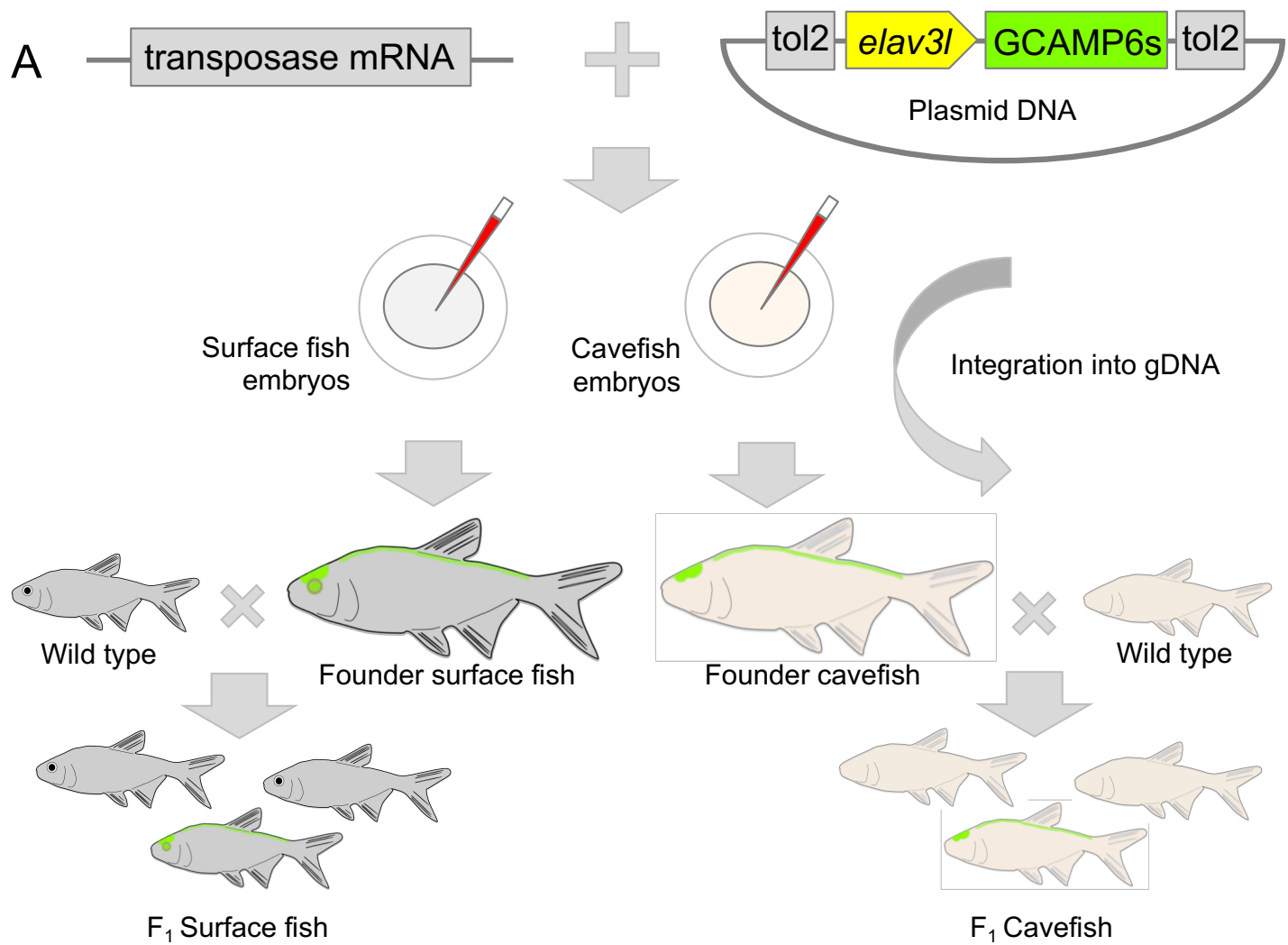


Table #1. Restriction digest of Tol2 plasmid.

Reagent	Volume or Amount
10.0 µg of pCS-zT2TP plasmid DNA	X µl
NEB CutSmart Buffer	10.0 µl
NotI-HF Enzyme	2.0 µl
Nuclease-free H ₂ O	X µl
BSA	1.0 µl
Total	100 µl

Table #2. *In vitro* synthesis of Tol2 mRNA.

Reagent	Volume or Amount
1.0 µg of <i>linearized</i> pCS-zT2TP plasmid DNA	X µl
10x Reaction buffer	2.0 µl
2x NTP/CAP	10.0 µl
SP6 enzyme mix	2.0 µl
RNase-free H ₂ O	X µl
Total	≤20 µl

Table #3. Sample pipette-pulling protocol.

Setting name	Setting value
Heat	510
Pull	55
Velocity	100
Time	40
Pressure	500
Ramp	534

Table #4. Morpholino injection mixture.

Reagent	Volume or Amount
Morpholino (Freezer stock @ 4mM)	1.0 µl
Nuclease-free H ₂ O or Danieau's solution	17.0 µl
Phenol Red	2.0 µl
Total	20 µl

Table #5. Sample CRISPR/Cas9 injection mixture.

Reagent	Volume of Amount
gRNA (final working concentration @ 100ng/ μ l)	1 μ l
Cas9 mRNA (final working concentration @ 1200ng/ μ l)	1 μ l
RNase-free H ₂ O	2 μ l
Total	4 μl

Table #6. Sample Tol2 transgenesis injection mixture.

Reagent	Volume of Amount
Tol2 plasmid (final working concentration @ 25ng/ μ l)	X μ l
Tol2 mRNA (final working concentration @ 25ng/ μ l)	X μ l
Phenol Red	1.0 μ l
RNase-free H ₂ O	X μ l
Total	15 μl

Name of Material/ Equipment	Company	Catalog Number
<i>Fish breeding & egg supplies</i>		
Fine mesh fish net	Penn Plax	BN4
Fish tank heater	Aqueon	100106108
Egg traps	Custom made	NA
Glass pipettes	Fisher Scientific	13-678-20C
Pipette bulbs	Fisher Scientific	03-448-21
Agarose	Fisher Scientific	BP160-500
Egg molds	Adaptive Science Tools	TU-1
<i>Morpholino supplies</i>		
Control Morpholino	Gene Tools, LLC	Standard control olio
Custom Morpholino	Gene Tools, LLC	NA
Phenol Red	Sigma Aldrich	P0290-100ML
<i>CRISPR supplies</i>		
Cas9 Plasmid	AddGene	46757
GoTaq DNA Polymerase	Promega	M3001
KOD Hot Start Taq	EMD Millipore	71-842-3
Primers	Integrated DNA Technologies	Custom
T7 Megascript Kit	Ambion/Thermofisher	AM1333
miRNeasy Kit	Qiagen	217004
mMessage mMachine T3 kit	Ambion/Thermofisher	AM1348
MinElute Kit	Qiagen	28204
<i>Tol2 transgenesis supplies</i>		
pCS-zT2TP plasmid	Kawakami et al., 2004	Request from senior author
CutSmart Buffer	New England Biolabs	B7204
NotI-HF Restriction Enzyme	New England Biolabs	R3189
PCR purification Kit	Qiagen	28104

SP6 mMessenger Kit	Ambion/Thermofisher	AM1340
--------------------	---------------------	--------

<i>Microinjection supplies</i>		
---------------------------------------	--	--

Glass Capillary Tubes	Sutter Instruments	BF100-58-10
Pipette puller	Sutter Instruments	P-97
Picoinjector	Warner Instruments	PLI-100A
Micromanipulator	World Precision Instruments	M3301R
Micromanipulator Stand	World Precision Instruments	M10
Micmanipulator Base	World Precision Instruments	Steel Plate Base, 10 lbs

Comments/Description
Design and create plastic grate to place at bottom of tank to protect eggs





1 Alewife Center #200
Cambridge, MA 02140
tel. 617.945.9051
www.jove.com

ARTICLE AND VIDEO LICENSE AGREEMENT

Title of Article:

Manipulation of gene function in *Astyanax mexicanus*

Author(s):

Bethany Stahl, James Jaggard, Jacqueline Chin, Johanna Kowalko, Alex Keene, Erik Duboue

Item 1 (check one box): The Author elects to have the Materials be made available (as described at

<http://www.jove.com/author>) via: ☒ Standard Access ☐ Open Access

Item 2 (check one box):



The Author is NOT a United States government employee.



The Author is a United States government employee and the Materials were prepared in the course of his or her duties as a United States government employee.



The Author is a United States government employee but the Materials were NOT prepared in the course of his or her duties as a United States government employee.

ARTICLE AND VIDEO LICENSE AGREEMENT

1. **Defined Terms.** As used in this Article and Video License Agreement, the following terms shall have the following meanings: “**Agreement**” means this Article and Video License Agreement; “**Article**” means the article specified on the last page of this Agreement, including any associated materials such as texts, figures, tables, artwork, abstracts, or summaries contained therein; “**Author**” means the author who is a signatory to this Agreement; “**Collective Work**” means a work, such as a periodical issue, anthology or encyclopedia, in which the Materials in their entirety in unmodified form, along with a number of other contributions, constituting separate and independent works in themselves, are assembled into a collective whole; “**CRC License**” means the Creative Commons Attribution-Non Commercial-No Derivs 3.0 Unported Agreement, the terms and conditions of which can be found at: <http://creativecommons.org/licenses/by-nc-nd/3.0/legalcode>; “**Derivative Work**” means a work based upon the Materials or upon the Materials and other pre-existing works, such as a translation, musical arrangement, dramatization, fictionalization, motion picture version, sound recording, art reproduction, abridgment, condensation, or any other form in which the Materials may be recast, transformed, or adapted; “**Institution**” means the institution, listed on the last page of this Agreement, by which the Author was employed at the time of the creation of the Materials; “**JoVE**” means MyJoVE Corporation, a Massachusetts corporation and the publisher of *The Journal of Visualized Experiments*; “**Materials**” means the Article and / or the Video; “**Parties**” means the Author and JoVE; “**Video**” means any video(s) made by the Author, alone or in conjunction with any other parties, or by JoVE or its affiliates or agents, individually or in collaboration with the Author or any other parties, incorporating all or any portion of the Article, and in which the Author may or may not appear.

2. **Background.** The Author, who is the author of the Article, in order to ensure the dissemination and protection of the Article, desires to have the JoVE publish the Article and create and transmit videos based on the Article. In furtherance of such goals, the Parties desire to memorialize in this Agreement the respective rights of each Party in and to the Article and the Video.

3. **Grant of Rights in Article.** In consideration of JoVE agreeing to publish the Article, the Author hereby grants to JoVE, subject to **Sections 4** and **7** below, the exclusive, royalty-free, perpetual (for the full term of copyright in the Article, including any extensions thereto) license (a) to publish, reproduce, distribute, display and store the Article in all forms, formats and media whether now known or hereafter developed (including without limitation in print, digital and electronic form) throughout the world, (b) to translate the Article into other languages, create adaptations, summaries or extracts of the Article or other Derivative Works (including, without limitation, the Video) or Collective Works based on all or any portion of the Article and exercise all of the rights set forth in (a) above in such translations, adaptations, summaries, extracts, Derivative Works or Collective Works and (c) to license others to do any or all of the above. The foregoing rights may be exercised in all media and formats, whether now known or hereafter devised, and include the right to make such modifications as are technically necessary to exercise the rights in other media and formats. If the “Open Access” box has been checked in **Item 1** above, JoVE and the Author hereby grant to the public all such rights in the Article as provided in, but subject to all limitations and requirements set forth in, the CRC License.

ARTICLE AND VIDEO LICENSE AGREEMENT

4. Retention of Rights in Article. Notwithstanding the exclusive license granted to JoVE in **Section 3** above, the Author shall, with respect to the Article, retain the non-exclusive right to use all or part of the Article for the non-commercial purpose of giving lectures, presentations or teaching classes, and to post a copy of the Article on the Institution's website or the Author's personal website, in each case provided that a link to the Article on the JoVE website is provided and notice of JoVE's copyright in the Article is included. All non-copyright intellectual property rights in and to the Article, such as patent rights, shall remain with the Author.

5. Grant of Rights in Video – Standard Access. This **Section 5** applies if the "Standard Access" box has been checked in **Item 1** above or if no box has been checked in **Item 1** above. In consideration of JoVE agreeing to produce, display or otherwise assist with the Video, the Author hereby acknowledges and agrees that, Subject to **Section 7** below, JoVE is and shall be the sole and exclusive owner of all rights of any nature, including, without limitation, all copyrights, in and to the Video. To the extent that, by law, the Author is deemed, now or at any time in the future, to have any rights of any nature in or to the Video, the Author hereby disclaims all such rights and transfers all such rights to JoVE.

6. Grant of Rights in Video – Open Access. This **Section 6** applies only if the "Open Access" box has been checked in **Item 1** above. In consideration of JoVE agreeing to produce, display or otherwise assist with the Video, the Author hereby grants to JoVE, subject to **Section 7** below, the exclusive, royalty-free, perpetual (for the full term of copyright in the Article, including any extensions thereto) license (a) to publish, reproduce, distribute, display and store the Video in all forms, formats and media whether now known or hereafter developed (including without limitation in print, digital and electronic form) throughout the world, (b) to translate the Video into other languages, create adaptations, summaries or extracts of the Video or other Derivative Works or Collective Works based on all or any portion of the Video and exercise all of the rights set forth in (a) above in such translations, adaptations, summaries, extracts, Derivative Works or Collective Works and (c) to license others to do any or all of the above. The foregoing rights may be exercised in all media and formats, whether now known or hereafter devised, and include the right to make such modifications as are technically necessary to exercise the rights in other media and formats. For any Video to which this Section 6 is applicable, JoVE and the Author hereby grant to the public all such rights in the Video as provided in, but subject to all limitations and requirements set forth in, the CRC License.

7. Government Employees. If the Author is a United States government employee and the Article was prepared in the course of his or her duties as a United States government employee, as indicated in **Item 2** above, and any of the licenses or grants granted by the Author hereunder exceed the scope of the 17 U.S.C. 403, then the rights granted hereunder shall be limited to the maximum rights permitted under such

statute. In such case, all provisions contained herein that are not in conflict with such statute shall remain in full force and effect, and all provisions contained herein that do so conflict shall be deemed to be amended so as to provide to JoVE the maximum rights permissible within such statute.

8. Likeness, Privacy, Personality. The Author hereby grants JoVE the right to use the Author's name, voice, likeness, picture, photograph, image, biography and performance in any way, commercial or otherwise, in connection with the Materials and the sale, promotion and distribution thereof. The Author hereby waives any and all rights he or she may have, relating to his or her appearance in the Video or otherwise relating to the Materials, under all applicable privacy, likeness, personality or similar laws.

9. Author Warranties. The Author represents and warrants that the Article is original, that it has not been published, that the copyright interest is owned by the Author (or, if more than one author is listed at the beginning of this Agreement, by such authors collectively) and has not been assigned, licensed, or otherwise transferred to any other party. The Author represents and warrants that the author(s) listed at the top of this Agreement are the only authors of the Materials. If more than one author is listed at the top of this Agreement and if any such author has not entered into a separate Article and Video License Agreement with JoVE relating to the Materials, the Author represents and warrants that the Author has been authorized by each of the other such authors to execute this Agreement on his or her behalf and to bind him or her with respect to the terms of this Agreement as if each of them had been a party hereto as an Author. The Author warrants that the use, reproduction, distribution, public or private performance or display, and/or modification of all or any portion of the Materials does not and will not violate, infringe and/or misappropriate the patent, trademark, intellectual property or other rights of any third party. The Author represents and warrants that it has and will continue to comply with all government, institutional and other regulations, including, without limitation all institutional, laboratory, hospital, ethical, human and animal treatment, privacy, and all other rules, regulations, laws, procedures or guidelines, applicable to the Materials, and that all research involving human and animal subjects has been approved by the Author's relevant institutional review board.

10. JoVE Discretion. If the Author requests the assistance of JoVE in producing the Video in the Author's facility, the Author shall ensure that the presence of JoVE employees, agents or independent contractors is in accordance with the relevant regulations of the Author's institution. If more than one author is listed at the beginning of this Agreement, JoVE may, in its sole discretion, elect not take any action with respect to the Article until such time as it has received complete, executed Article and Video License Agreements from each such author. JoVE reserves the right, in its absolute and sole discretion and without giving any reason therefore, to accept or decline any work submitted to JoVE. JoVE and its employees, agents and independent contractors shall have

ARTICLE AND VIDEO LICENSE AGREEMENT

full, unfettered access to the facilities of the Author or of the Author's institution as necessary to make the Video, whether actually published or not. JoVE has sole discretion as to the method of making and publishing the Materials, including, without limitation, to all decisions regarding editing, lighting, filming, timing of publication, if any, length, quality, content and the like.

11. **Indemnification.** The Author agrees to indemnify JoVE and/or its successors and assigns from and against any and all claims, costs, and expenses, including attorney's fees, arising out of any breach of any warranty or other representations contained herein. The Author further agrees to indemnify and hold harmless JoVE from and against any and all claims, costs, and expenses, including attorney's fees, resulting from the breach by the Author of any representation or warranty contained herein or from allegations or instances of violation of intellectual property rights, damage to the Author's or the Author's institution's facilities, fraud, libel, defamation, research, equipment, experiments, property damage, personal injury, violations of institutional, laboratory, hospital, ethical, human and animal treatment, privacy or other rules, regulations, laws, procedures or guidelines, liabilities and other losses or damages related in any way to the submission of work to JoVE, making of videos by JoVE, or publication in JoVE or elsewhere by JoVE. The Author shall be responsible for, and shall hold JoVE harmless from, damages caused by lack of sterilization, lack of cleanliness or by contamination due to the making of a video by JoVE its employees, agents or independent contractors. All sterilization, cleanliness or decontamination procedures shall be solely the responsibility of the Author and shall be undertaken at the Author's


expense. All indemnifications provided herein shall include JoVE's attorney's fees and costs related to said losses or damages. Such indemnification and holding harmless shall include such losses or damages incurred by, or in connection with, acts or omissions of JoVE, its employees, agents or independent contractors.

12. **Fees.** To cover the cost incurred for publication, JoVE must receive payment before production and publication the Materials. Payment is due in 21 days of invoice. Should the Materials not be published due to an editorial or production decision, these funds will be returned to the Author. Withdrawal by the Author of any submitted Materials after final peer review approval will result in a US\$1,200 fee to cover pre-production expenses incurred by JoVE. If payment is not received by the completion of filming, production and publication of the Materials will be suspended until payment is received.

13. **Transfer, Governing Law.** This Agreement may be assigned by JoVE and shall inure to the benefits of any of JoVE's successors and assignees. This Agreement shall be governed and construed by the internal laws of the Commonwealth of Massachusetts without giving effect to any conflict of law provision thereunder. This Agreement may be executed in counterparts, each of which shall be deemed an original, but all of which together shall be deemed to be one and the same agreement. A signed copy of this Agreement delivered by facsimile, e-mail or other means of electronic transmission shall be deemed to have the same legal effect as delivery of an original signed copy of this Agreement.

A signed copy of this document must be sent with all new submissions. Only one Agreement required per submission.

CORRESPONDING AUTHOR:

Name:	Erik R. Duboué	
Department:	Wilkes Honors College, Biology	
Institution:	Florida Atlantic University	
Article Title:	Manipulation of gene function in <i>Astyanax mexicanus</i>	
Signature:		Date: Sept. 12, 2018

Please submit a signed and dated copy of this license by one of the following three methods:

- 1) Upload a scanned copy of the document as a pdf on the JoVE submission site;
- 2) Fax the document to +1.866.381.2236;
- 3) Mail the document to JoVE / Attn: JoVE Editorial / 1 Alewife Center #200 / Cambridge, MA 02139

For questions, please email submissions@jove.com or call +1.617.945.9051

Editorial comments:

Changes to be made by the author(s) regarding the manuscript:

1. Please take this opportunity to thoroughly proofread the manuscript to ensure that there are no spelling or grammar issues.

The manuscript has been proof-read, and minor grammatical and other typographical errors have been corrected.

2. Please add a Summary section before the Abstract to clearly describe the protocol and its applications in complete sentences between 10-50 words: "Here, we present a protocol to ..."

A summary section has been included.

3. Abstract (line 39): Please do not include references here.

References have been removed from the abstract.

4. Please adjust the numbering of the Protocol to follow the JoVE Instructions for Authors. For example, 1 should be followed by 1.1 and then 1.1.1 and 1.1.2 if necessary. Please refrain from using bullets, dashes, or indentations.

The numbering has been adjusted accordingly.

5. JoVE cannot publish manuscripts containing commercial language. This includes trademark symbols (™), registered symbols (®), and company names before an instrument or reagent. Please remove all commercial language from your manuscript and use generic terms instead. All commercial products should be sufficiently referenced in the Table of Materials and Reagents. You may use the generic term followed by "(see table of materials)" to draw the readers' attention to specific commercial names. Examples of commercial sounding language in your manuscript are: Gene Tools, LLC, Integrated DNA Technologies, Ambion, mMessage mMACHINE, Qiagen, Kim® wipe, etc.

All commercial names have been removed from the manuscript.

6. Please revise the protocol to contain only action items that direct the reader to do something (e.g., "Do this," "Ensure that," etc.). The actions should be described in the imperative tense in complete sentences wherever possible. Avoid usage of phrases such as "could be," "should be," and "would be" throughout the Protocol. Any text that cannot be written in the imperative tense may be added as a "Note." Please include all safety procedures and use of hoods, etc. However, notes should be used sparingly and actions should be described in the imperative tense wherever possible. Please move the discussion about the protocol to the Discussion.

All steps in the protocol section have been revised to state action phrases. We have included notes sparsely, where we felt appropriate. Finally, the discussion has been removed from the protocol section and places in the appropriate place.

7. Please add more details to your protocol steps. There should be enough detail in each step to supplement the actions seen in the video so that viewers can easily replicate the protocol. Please ensure you answer the "how" question, i.e., how is the step performed? Alternatively, add references to published material specifying how to perform the protocol action. See examples below.

The protocol has been revised to include more detail, which we hope better guides the reader. We have also included a citation for the CRISPR/Cas9 generation methods. This citation will point the reviewer to a detailed overview of CRISPR/Cas9 design and implementation.

8. Please ensure that conditions and primers are listed all PCR procedures.

We have added the requested details. Primer sequences for gene manipulation using CRISPR/Cas9 are provided in the text, as well as in the main figure.

9. Line 239: How to record the concentration of the gRNA?

We have now added details for determining concentration of gRNA. We typically do this using as nanodrop, and this has been explicitly stated in the manuscript.

10. Please include single-line spaces between all paragraphs, headings, steps, etc.

Single-line spaces have been used between all paragraphs, headings and steps.

11. After you have made all the recommended changes to your protocol (listed above), please highlight 2.75 pages or less of the Protocol (including headings and spacing) that identifies the essential steps of the protocol for the video, i.e., the steps that should be visualized to tell the most cohesive story of the Protocol.

Done

12. Please highlight complete sentences (not parts of sentences). Please ensure that the highlighted part of the step includes at least one action that is written in imperative tense. Please note that design steps are not appropriate for filming.

Done

13. Please include all relevant details that are required to perform the step in the highlighting. For example: If step 2.5 is highlighted for filming and the details of how to perform the step are given in steps 2.5.1 and 2.5.2, then the sub-steps where the details are provided must be highlighted.

Done

14. Line 569: For in-text references, the corresponding reference numbers should appear as superscripts after the appropriate statement(s) in the text (before punctuation but after closed parenthesis).

The references have been reformatted to comply with JoVE guidelines

15. Please upload each Figure individually to your Editorial Manager account as a .png, .tiff, .pdf, .svg, .eps, .psd, or .ai file.

Done

16. Please remove the embedded table(s) from the manuscript. All tables should be uploaded separately to your Editorial Manager account in the form of an .xls or .xlsx file. Each table must be accompanied by a title and a description after the Representative Results of the manuscript text.

Done

17. Tables: Please change “ μ l” to “ μ L”. Please remove commercial language (CutSmart, etc.)

Done

18. JoVE articles are focused on the methods and the protocol, thus the discussion should be similarly focused. Please revise the Discussion to explicitly cover the following in detail in 3-6 paragraphs with citations:

- a) Critical steps within the protocol
- b) Any modifications and troubleshooting of the technique
- c) Any limitations of the technique
- d) The significance with respect to existing methods
- e) Any future applications of the technique

19. References: Please do not abbreviate journal titles.

We have modified the discussion to highlight the above points.

Reviewers' comments:

Reviewer #1:

Manuscript Summary:

The authors provided detailed protocols for manipulation of gene expression in a special cavefish, Mexican tetra (*Astyanax mexicanus*). These methods are critical for further genetic and functional investigation.

We thank the author for reviewing the manuscript, and for their feedback. Each point below has been addressed.

Major Concerns:

Lines 254-255: Why didn't use the published genome sequence of this cavefish for designing Tol2 constructs?

We initially decided to use well-established Tol2 vectors, which are widely used in zebrafish research. This allowed us to optimize the protocol using reagents that we knew worked well. However, since establishing this protocol in *Astyanax mexicanus*, subsequent studies can use the published genome sequences to target specific genes of interest.

Lines 252-298: Where is the description of Table #2 in the main text?

We reference the Table in Step #4.2.4

Minor Concerns:

Please don't use abbreviations for certain normal terms, such as spec on lines 264 & 280.

The authors are recommended to polish the manuscript carefully, since it is not a note records of experiments.

Abbreviations have been removed, and the manuscript has been proof-read.

Reviewer #2:

Manuscript Summary:

The author described the procedure to generate the gain of function and loss of function in *A. mexicanus* with detailed parameters and impressive pictures. In overall, the description and protocols were clear, which is ideally to extent the protocols to other fish species. However, there are more data should be

provided as the requirement for Journal of Visualized Experiments, the efficacy of the protocol must be demonstrated. Therefore, a minor revision need be made before accept.

We thank the reviewer for providing thoughtful comments. We have modified the figures and the text to address most of the concerns raised. Unfortunately, we did not systematically keep track of survival for either transgenesis or MO-injection, but we have not observed notable number of deaths when compared to controls. All other points have been addressed fully.

1. In figure 1, the author obtained the morpholino-fish and showed the final effect, how many embryos (n=?) they used for Surface fish and Pachon fish? How many embryos show effect?

We did not systematically track this. On average, the MO does not seem to affect larvae grossly.

2. In Figure 2, the *Oca2* gene was disrupted by Crispr/Cas9, and evidently proved by PCR and final mutant fish. Is it possibly and necessary to provide the original sequencing photo/data to show the deletion of 2-bp near PAM? And how many mutants they obtained from the sequenced clones? Another question is: Crispr/Cas9 always give more than one type of deletion in the target region, whether the author observe other type of deletion in the PAM region?

We focused on sequencing of alleles that were transmitted through the germline, and which we could use to establish lines. These sequencing results have been added to the manuscript, notably in Figure 2B-C. Regarding the differences in mutations among individuals: we established 2 lines from two different founder fish, each of which contained a different mutation.

3. In figure 3, they already obtained the transgenic lines and looked great. What is number of injected embryos and the ratio to get the transgenic line?

We also did not track this systematically. We do see that more death following injection in cavefish, but it is not severe. We also expect that this will vary with different constructs.

Reviewer #3:

Manuscript Summary:

The authors describe a protocol for three approaches for studying and manipulating gene functions in *A. mexicanus*. The protocol included the use of morpholino, tol2 transgenesis and CRISPR-Cas9 gene editing. Morpholinos were used to knock down the neuropeptide *hcr* to study its role in sleep regulation. *Oca2* gene that is responsible for albinism was knocked out using the CRISPR-Cas9 system. Tol2 transgenic approach was used to generate transgenic fish expressing the *GCaMP6s* gene.

We thank this reviewer as well for their thoughtful feedback. We have addressed the concerns raised, with in the manuscript or through modified figures. A detailed list of the changes is found below.

Minor Concerns:

Where did the authors microinject the embryos? in the cytoplasm of the one-cell stage or in the yolk? This should be clarified.

We inject into one-cell stage individuals, and we target the yolk. This has been stated explicitly in 5.4.8

Line 187: morpholino

Thanks. This has been corrected.

Line 197-201: It appears that the authors designed their gRNA manually? There are several online tools that are time-saving and usually design more efficient oligos. Those tools generate several oligos for the target genes and rank them by a quality score. Some of those tools also check for potential off targets against some available genomes.

We did design our gRNAs manually, as many of the online tools do not include the cavefish genome. Some online tools now include cavefish, such as <https://crispr.cos.uni-heidelberg.de/>, but we have never used this tool, and cannot assess whether it produces better results.

Line 203-206: the first sentence of the note is confusing to me as it appears that the authors suggest that a gRNA can be designed for a genomic target that doesn't have a PAM sequence (NGG)?

This refers to the GGs at the 5' end of the gRNA, not the PAM sequence. We have clarified within the text that this refers to the 5' end.

Line 231: check the sequence of the 3' gRNA primer for mismatches (at least 4 or 5 nucleotides). Is there a reason for this mismatch? Also, why does the 3' gRNA primer begin after 5 nucleotides from the end (the first 5 nucleotides are not included)? Is this a requirement of the primer design, and will not affect the binding of the final oligo with Cas9 protein?

The sequence of the oligo B in the text was incorrect. We have updated this, and thank the reviewer for noticing.

Line 233: what are the PCR conditions? How much do you add of each oligo and other PCR components? How do you check the yield? This should be described, or a reference should be provided.

For PCR, we followed previously reported conditions, Kowalko et al. (2016), and have cited this paper. We have made this clear in the manuscript.

Line 278-283: Step f. is a repeat for step d.

Thank you. We have omitted the duplicated step.

Line 289-290: how long is the incubation time?

For all incubation time throughout the protocol, we follow the guidelines provided by the manufactures of whatever kit we use. For Tol2 step, we use 2 hours, as suggested by the mMessage machine protocol.

Line 329: how much feed do you regularly add so that the 3X can be estimated (% of body weight?)

3x here refers to number of feedings per day, not 3x as much food. We regularly feed fish 1-2x per day. We have tried to make this clear in the manuscript.

Line 334: ZT is defined at line 341 and should be defined at the first time you mention it.

Thank you for bringing this to our attention. The definition has been added earlier.

Line 337: the two statements are confusing regarding the time of check for eggs. If the first one is for surface fish, this should be mentioned.

For reasons that we do not understand, surface fish and cavefish spawn at different times of the day. We have tried to clarify this point in the manuscript.

Line 356: I guess you warm the agarose plates to room temperature after you get them from the refrigerator and before placing the embryos. If so, it is important to mention that here to avoid the harmful effects of temperature fluctuations on embryos.

Yes, the reviewer is correct – plates are warmed. We have added this detail.

Line 363: how do you backfill the injection needles? it should be described.

Needles are backfilled using a standard gel-loading pipet tip. This has been added to section 5.4.1.

Line 374: this step can be deleted.

Thanks. We've removed it.

Line 383: how long does the one-cell stage last? This will help researchers to plan a head so that they inject before the embryos reach the two-cell stage.

The one-cell stage lasts for approximately 40 min. We have added this to step 5.4.9.

Line 399: Transposase mRNA not Cas9 mRNA.

Thanks. This has been corrected.

Line 408: what's the size of the glass bowl? Or what's the embryo stocking density, per liter for example?

The size of the glass bowl is 10 x 5 cm. This has been added to step 6.1.1.

Line 423: check the step numbering (2.2.A, 2.2.A)

Thanks. This has been corrected.

Line 444-449: Do you generate lines of fish that are mutant for one or both alleles? The procedures mentioned here can generate mutant fish for one allele but not both. It should be clarified here.

Yes, the reviewer is correct. For the results given here, we have generated a 'Molino-specific' allele. We have clarified that this procedure is to establish lines of fish transmitting mutant alleles

Line 452: state the figure number.

This has been fixed.

Line 460-461: a reference for a PCR screening protocol may be provided here.

Whereas this is commonly done in zebrafish, a detailed protocol describing the approach is typically not provided. We have looked for one, but as far as we can see, there is not standard reference for it.

Line 520: "25 pg of gRNA was injected into 1-cell stage surface fish embryos, along with 300 pg Cas9 mRNA" is already mentioned in the methods and can be deleted.

Done.

Line 747: SB should be defined here and in other figures.

Scale bars have been included.

Table of materials

Morpholino supplies: Standard control oligo.

In compliance with data protection regulations, please contact the publication office if you would like to have your personal information removed from the database.