

Journal of Visualized Experiments

Improving high viscosity extrusion of microcrystals for time-resolved serial femtosecond crystallography at X-ray lasers --Manuscript Draft--

Article Type:	Invited Methods Article - JoVE Produced Video
Manuscript Number:	JoVE59087R3
Full Title:	Improving high viscosity extrusion of microcrystals for time-resolved serial femtosecond crystallography at X-ray lasers
Keywords:	time-resolved serial crystallography x-ray free electron lasers high viscosity injectors sample delivery microcrystals bacteriorhodopsin membrane proteins three-way coupler
Corresponding Author:	Joerg Standfuss Paul Scherrer Institut VILLIGEN PSI, Aargau SWITZERLAND
Corresponding Author's Institution:	Paul Scherrer Institut
Corresponding Author E-Mail:	joerg.standfuss@psi.ch
Order of Authors:	Daniel James Tobias Weinert Petr Skopintsev Antonia Furrer Dardan Gashi Tomoyuki Tanaka Eriko Nango Przemyslaw Nogly Joerg Standfuss
Additional Information:	
Question	Response
Please indicate whether this article will be Standard Access or Open Access.	Open Access (US\$4,200)
Please indicate the city, state/province, and country where this article will be filmed . Please do not use abbreviations.	5232 Villigen PSI, Aargau, Switzerland

TITLE:

Improving high viscosity extrusion of microcrystals for time-resolved serial femtosecond crystallography at X-ray lasers

AUTHORS AND AFFILIATIONS:

Daniel James¹, Tobias Weinert¹, Petr Skopintsev¹, Antonia Furrer¹, Dardan Gashi^{1,2}, Tomoyuki Tanaka^{3,4}, Eriko Nango^{3,4}, Przemyslaw Nogly^{1,5}, Jörg Standfuss¹

¹Division of Biology and Chemistry - Laboratory for Biomolecular Research, Paul Scherrer Institut, Villigen, Switzerland

²Photon Science Division - SwissFEL, Paul Scherrer Institut, Villigen, Switzerland

³RIKEN SPring-8 Center, Hyogo, Japan

⁴Department of Cell Biology, Graduate School of Medicine, Kyoto University, Kyoto, Japan

⁵Department of Biology, ETH Zürich, Zürich, Switzerland

Corresponding Author:

Jörg Standfuss

joerg.standfuss@psi.ch

Email Addresses of Co-authors:

Daniel James (daniel.james@psi.ch)

Tobias Weinert (tobias.weinert@psi.ch)

Petr Skopintsev (petr.skopintsev@psi.ch)

Antonia Furrer (antonia.furrer@psi.ch)

Dardan Gashi (dardan.gashi@psi.ch)

Tomoyuki Tanaka (ttanaka@spring8.or.jp)

Eriko Nango (enango_kuma@me.com)

Przemyslaw Nogly (przemyslaw.nogly@psi.ch)

KEYWORDS:

time-resolved serial crystallography, lipidic cubic phase, bacteriorhodopsin, membrane proteins, high viscosity injector, three-way coupler, X-ray free electron laser

SUMMARY:

The success of a time-resolved serial femtosecond crystallography experiment is dependent on efficient sample delivery. Here, we describe protocols to optimize the extrusion of bacteriorhodopsin microcrystals from a high viscosity micro-extrusion injector. The methodology relies on sample homogenization with a novel three-way coupler and visualization with a high-speed camera.

ABSTRACT:

High-viscosity micro-extrusion injectors have dramatically reduced sample consumption in serial femtosecond crystallographic experiments (SFX) at X-ray free electron lasers (XFELs). A series of experiments using the light-driven proton pump bacteriorhodopsin have further established these injectors as a preferred option to deliver crystals for time-resolved serial femtosecond

crystallography (TR-SFX) to resolve structural changes of proteins after photoactivation. To obtain multiple structural snapshots of high quality, it is essential to collect large amounts of data and ensure clearance of crystals between every pump laser pulse. Here, we describe in detail how we optimized the extrusion of bacteriorhodopsin microcrystals for our recent TR-SFX experiments at the Linac Coherent Light Source (LCLS). The goal of the method is to optimize extrusion for a stable and continuous flow while maintaining a high density of crystals to increase the rate at which data can be collected in a TR-SFX experiment. We achieve this goal by preparing lipidic cubic phase with a homogenous distribution of crystals using a novel three-way syringe coupling device followed by adjusting the sample composition based on measurements of the extrusion stability taken with a high-speed camera setup. The methodology can be adapted to optimize the flow of other microcrystals. The setup will be available for users of the new Swiss Free Electron Laser facility.

INTRODUCTION:

Serial femtosecond crystallography (SFX) is a structural biology technique that exploits the unique properties of X-ray free electron lasers (XFEL) to determine room temperature structures from thousands of micrometer-sized crystals while outrunning most of the radiation damage by the “diffraction before destruction” principle¹⁻³.

In a time-resolved extension of SFX (TR-SFX), the femtosecond pulses from the XFEL are used to study structural changes in proteins^{4,5}. The protein of interest is activated with an optical laser (or another activity trigger) just prior to being shot by the XFEL in a pump-probe setup. By precisely controlling the delay between pump and probe pulses, the target protein can be captured in different states. Molecular movies of structural changes over eleven orders of magnitude in time demonstrate the power of the new XFEL sources to study the dynamics of several protein targets⁶⁻¹³. Principally, the method joins the dynamic spectroscopic and static structural techniques into one, providing a glimpse into protein dynamics at near atomic resolution.

Simple systems for TR-SFX may contain an endogenous trigger of activation with a photo-sensitive component like retinal in bacteriorhodopsin (bR)^{9,10}, the chromophores in photosystem II^{12,13}, photoactive yellow protein (PYP)^{6,7} reversibly photoswitchable fluorescent protein¹¹, or a photolabile carbon monoxide in myoglobin⁸. Exciting variations of the technique still in development rely on mix and inject schemes^{14,15} to study enzymatic reactions or an electric field used to induce structural changes¹⁶. Given that XFEL sources have only been available for a few years and extrapolating past successes into the future, the method shows potential as a real game-changer with respect to our understanding of how proteins function.

Because biological samples are destroyed by a single exposure to a high power XFEL pulse, new approaches to protein crystallography were necessary. Among these procedures, the ability to grow large amounts of uniform microcrystals needed to be developed¹⁷⁻¹⁹. To enable data collection at an XFEL, these crystals must be delivered, discarded, and then renewed for each XFEL pulse. Given that XFELs fire usable pulses at 10-120 Hz, sample delivery must be fast, stable, and reliable, while also keeping the crystals intact and limiting consumption. Among the most

successful solutions is a high viscosity micro-extrusion injector, which delivers a continuously streaming column of room temperature crystal-laden lipidic cubic phase (LCP) across the pulsed X-ray beam²⁰. Randomly oriented crystals, embedded in the LCP stream, that are intercepted by the XFEL pulses scatter X-rays onto a detector where a diffraction pattern is recorded. LCP was a natural choice for a sample delivery medium as it is frequently used as a growth medium for membrane protein crystals^{17,21–23}, yet other high viscosity carrier media^{24–30} and soluble proteins³¹ have also been used in the injector. SFX with the high viscosity injector has been successful during the structure determination of membrane proteins^{13,32} including G protein-coupled receptors (GPCRs)^{33–37}, with data quality sufficient for native phasing^{38,39} while being both time and sample efficient. Currently, these injectors are being used more routinely for room temperature measurements at synchrotron sources^{28,30,40,41} as well as during the more technically demanding TR-SFX experiments at XFELs^{9,10,13,42}.

Comparable TR-SFX experiments have been carried out using other injector types like liquid phase delivery in a flow focused nozzle^{6,7,12}, however, this method requires protein amounts not available for many biologically interesting targets. For the determination of static structures using viscous extrusion an average consumption of 0.072 mg of protein per 10,000 indexed diffraction patterns in comparison to 9.35 mg for the liquid jet nozzles have been reported (i.e., about 130 times more sample efficient)²⁰. The high viscosity injector has been shown to be a viable sample delivery device for TR-SFX while only sacrificing some of this sample efficiency⁴³. In Nogly et al. (2018)¹⁰, for example, sample consumption was about 1.5 mg per 10,000 indexed patterns, which compares favorably to similar TR-SFX experiments using the PYP where average sample consumption was much higher with 74 mg of protein per 10,000 indexed patterns⁶. High viscosity injectors thus have clear advantages when the amount of protein available is limiting or when crystals are grown directly in LCP.

For TR-SFX using high viscosity injectors to yield the most reliable data several technical issues need to be addressed: the flow speed needs to remain above a minimum critical value; the hit-rate should be maintained at a level that does not render data collection slow (e.g., greater than 5%); and sample has to be delivered without excessive disruptions. Ideally, these conditions are already met long before a scheduled TR-SFX experiment to use available XFEL time as efficiently as possible. Principally, a slowdown in the LCP stream may allow probing crystals that were activated with more than one optical laser pulse and result in mixed active states, or probing pumped material when unpumped material is expected in the beam. An additional benefit of injection pre-testing is that downtime during data collection at an XFEL is minimized as time relegated to replacing clogged nozzles, changing out non-extruding samples, and other maintenance tasks is reduced.

Here, we present a method to optimize sample delivery for TR-SFX data collection with a high viscosity micro-extrusion injector. For simplicity, the described methods do not rely on access to an X-ray source, although work at a synchrotron beamline²⁹ would provide further information on expected hit rates and crystal diffraction. Our protocols were developed to optimize experiments to capture retinal isomerization in the proton-pump bacteriorhodopsin¹⁰ and are carried out in two phases starting with preparing crystal samples for extrusion followed by

monitoring the extrusion using a high-speed camera setup. In phase one, the crystal-laden LCP is mixed with additional LCP, low transition temperature lipids, or other additives to ensure the final mixture is suitable for delivery into the sample environment without clogging or slowing. A new three-way syringe coupler was developed to improve mixing performance and sample homogeneity. The second phase consists of an extrusion test recorded by a high-speed camera to directly measure the extrusion speed stability. Following the analysis of the video data, adjustments can be made to the sample preparation protocol to improve experimental outcomes. These procedures can be adapted to prepare other proteins for TR-SFX data collection, with minimal modifications, and will contribute to the efficient use of limited XFEL beamtime. With new XFEL facilities just starting their operation^{44,45} and the transfer of injector-based serial data collection methods to synchrotrons^{28,30,40,41}, the next few years will surely continue to provide exciting new insights into the structural dynamics of an ever-wider range of protein targets.

PROTOCOL:

1. Protein Crystal Sample Preparation

1.1. About 30 min before the sample is to be injected, load 50 μL of crystal-laden monoolein based LCP in a 100 μL syringe.

1.2. For injection at atmospheric pressure: Load 10 μL of liquid paraffin into the back of a second syringe. Holding the syringe vertically, expel the air bubbles from the syringe.

1.2.1. For injection into vacuum environment: Load 5 μL of MAG 7.9 and 5 μL of liquid paraffin into the back of a second syringe. Holding the syringe vertically, expel the air bubbles from the syringe.

1.3. Connect the syringe with paraffin/MAG 7.9 to a standard syringe coupler, purge the air from the coupler by gently pressing on the plunger until a small volume ($<1 \mu\text{L}$) of paraffin/lipid is visible at the tip of the coupler needle.

1.4. Connect the sample syringe to the syringe coupler, taking care to not introduce any air into the sample. Mix in the lipid/paraffin by passing the sample material through the coupler multiple times.

1.5. Load 20 μL of premixed LCP (27% PEG, 100 mM Sorensen pH 5.6 + MO) into another 100 μL syringe. Remove air bubbles as necessary.

1.6. Remove the empty syringe from the coupler and attach the premixed LCP to the crystal containing syringe using a standard syringe coupler. Pass the sample through the coupler 100 times.

NOTE: Sample mixing may heat the sample slightly⁴⁶. Mixing should be done at a slow rate where

the temperature of the sample can be held reasonably constant.

1.7. Inspect the sample for transparency against a source of light. If a clear homogeneous LCP has formed, go to step 1.9.

1.8. To bring the sample into the cubic phase, add 3 μL of monoolein and mix 50 times (as described above). Repeat this procedure just until a transparent phase has formed to avoid an excess of monoolein.

NOTE: The formation of the LCP is temperature dependent⁴⁷ and best results are achieved slightly above 20 °C. The amount of additional monoolein needed will depend on the volume of residual precipitant solution carried over from crystallization.

1.9. As a preliminary test for sample stiffness (as expected from the LCP phase) and extrudability, detach the empty syringe from the syringe coupler and, holding the syringe vertically, squeeze a small amount of sample (<2 μL) through the coupler. If the extruded sample forms an upright cylinder, then the sample is ready for extrusion testing.

1.10. Adjust the total volume of the sample to 100 μL by adding more premixed LCP (as in step 1.5).

1.11. Attach the sample syringe and two empty syringes to the three-way syringe coupler (purging the air from the coupler as before). Mix at least 50 times (or until homogeneous) by passing half of the sample into the second syringe and then pressing both halves of the sample into the third syringe simultaneously.

1.12. Place the syringe containing the mixed sample under a stereo microscope to verify a homogenous distribution of crystals.

2. Testing Sample Extrusion Using a High-Speed Camera Setup

2.1. Determining experimental parameters.

2.1.1. Select the nozzle size for the test.

NOTE: Nozzle sizes are typically 50 or 75 μm internal diameter (ID), but any size from roughly 30-100 μm ID may be considered. Selection is based on a balance between mean clogging time, background scattering, sample consumption, and hit-rate.

2.1.2. Calculate optimum flow speed based on experimental laser spot size ($1/e^2$ diameter), and the data collection scheme (e.g., interleaved light and dark) that will be used at the XFEL.

2.1.3. Calculate the desired flow rate (Q_s) of the sample from the optimum flow speed (v_e) and the selected nozzle diameter (d):

$$Q_s = v_e \pi \frac{d^2}{4}$$

Determine the flow rate (Q_P) that should be entered at the HPLC pump based on the amplification factor (A) of the injector.

$$Q_P = Q_s A$$

Calculate the maximum pressure (P_{MAX}) from the rated pressure of the nozzle fittings (R_{MAX}) and the amplification factor of the injector (A):

$$P_{MAX} = \frac{R_{MAX}}{A}$$

2.2. Setup of the high viscosity extrusion injector for offline use as shown in **Figure 1**.

NOTE: The injector functions by means of hydraulic extrusion powered by an HPLC pump, and uses a co-flowing helium gas sheath controlled by a gas regulator. The pump and regulator setup are not discussed in this protocol. See chapter four in James (2015)⁴⁸ for a detailed manual.

2.2.1. Purge the pump and all water lines to ensure the flowrates are accurate. Purge the hydraulic stage of the injector.

2.2.2. Mount the injector (or the camera) on a three-axis stage to facilitate framing and focus for the high-speed videos. Leave space around the injection point for the objective lens, illumination, reflective screen, and a small beaker to catch the spent sample.

2.2.3. Construct a “dummy nozzle” (an empty reservoir with a nozzle attached) and install it on the injector to facilitate positioning, focus, and illumination.

2.2.4. Mount the high-speed camera with the nozzle tip near the focal point of the objective.

2.2.5. Position the reflective screen behind the injector and adjust the illumination to front-light the nozzle.

2.2.6. Turn on and connect to the camera with the supplied software. With a live video running for visual feedback, position the nozzle tip in the center of the frame, and bring it into focus with the three-axis stage.

2.2.7. Adjust the illumination until the nozzle is clearly visible and the background is evenly illuminated.

260 2.3. Configuring the camera to record high-speed time-lapse video.

261
262 2.3.1. Set framerate to 1000 fps. Set resolution to 512 x 512 pixels.

263
264 2.3.2. With the exposure time now set by the frame rate, adjust the illumination level until the
265 nozzle is visible (i.e., not under- or overexposed). Reposition the nozzle tip so that it is centered
266 left to right and is located in the top third of the frame.

267
268 2.3.3. Run any background correction or white balance operations.

269
270 2.3.4. Set up the camera in time-lapse mode. Set interval to **30 s** and repeats to **40 times**, set
271 the trigger mode to **random** (or random reset), and enter the number of frames to record to
272 **1000**.

273
274 2.4. Load the reservoir with 20 μ L of the test sample, and attach the capillary nozzle.

275
276 2.5. Attach the filled reservoir to the injector. Attach the gas line to the port on the nozzle and
277 start the gas flow.

278
279 2.6. Manually advance the piston by opening the in-line valve and pressing the syringe. Close
280 the valve when the piston makes solid contact with the sample in the reservoir.

281
282 2.7. Program the pump with the calculated flow rate and set the maximum pressure to the
283 calculated value (see step 2.1.3).

284
285 2.8. Simultaneously start the pump and the camera recording.

286
287 2.9. As the extrusion begins, adjust the gas pressure to increase stability. Increase gas pressure
288 if the fluid forms a drop at the tip of the nozzle instead of a column. Decrease pressure if the
289 extrusion is broken due to excessive shear from the gas flow, or is oscillating rapidly (whipping).

290
291 2.10. Monitor the extrusion (10 min is usually enough to recognize a homogenous flow
292 condition) and, when the pump pressure sharply ramps up near the expected end time, stop
293 recording, shut off the pump, and vent the system pressure by opening the relief valve.

294
295 2.11. Analysis of the video files

296
297 NOTE: Sample extrusion that is plainly inadequate does not require a detailed analysis. However,
298 it is still useful to identify the failure mode so that the sample may be optimized.

299
300 2.11.1. Open the video file with the analysis software (e.g., Fiji⁴⁹) and calibrate the measurement
301 tools.

302
303 2.11.2. Calibrate the measurements by selecting a line of known length in the video image with

the line selection tool. Open the **Set Scale** window via **Analyze | Set Scale** and enter the known distance and the units of measurement.

NOTE: The known diameter of the nozzle provides an adequate calibration length for these measurements.

2.11.3. Find a frame in the video where there is a trackable feature visible (e.g., a crystal) in the extrusion. Record the frame number.

2.11.4. Advance the video to a frame where the same feature is visible but has moved from its position in the previous step. Record the frame number.

2.11.5. Using the straight line measurement tool, measure the distance from the feature start and endpoint via **Analyze | Measure**.

NOTE: The longer the trackable distance, the fewer errors in measurement will affect the calculations

2.11.6. Calculate the jet speed from the measured distance and the elapsed time (the number of elapsed frames divided by framerate.)

2.11.7. Repeat steps 2.11.3-2.11.6 a few times for every segment of the video.

2.11.8. Plot the data series as in **Figure 2**.

REPRESENTATIVE RESULTS:

The ideal starting material for the procedures described here (**Figure 3**) are high densities of microcrystals incorporated into viscous carrier medium for the injector. The procedure calls for about 50 μL of crystal laden carrier for each preparation. These can be grown directly in LCP as with the bR^{9,10} used here, as an example (**Figure 4**), or prepared using crystals grown in conventional vapor diffusion setups. An excellent video guide to crystallization directly in gastight syringes can be found in Ishchenko et al. (2016)³⁷. With bR, the ideal diameter of the crystalline plates is around 20 μm as a good compromise between diffraction power and homogenous activation by the pump laser. Protein crystals, prepared using the protocols as explained above, were used to collect TR-SFX data on the proton pump bR which revealed the ultrafast changes that occur after photon absorption (**Figure 5**).

After sample preparation using the three-way coupler (**Figure 6A,B**), visual inspection of the sample material in the syringe shows sample homogeneity (**Figure 6C,D**), and microscope images of the mixed sample, both in the syringe and on a slide, can confirm the density of the crystals and allows for measurements of crystal sizes, crystal size distribution, and crystal density. The sample is in the cubic phase when the delivery medium is clear (**Figure 7**) and viscous. Turbid mixtures are an indication that the sample is in a sponge phase or lamellar phase, but are not conclusive as high crystal density may obscure the LCPs clarity. A brief low-pressure test to

identify the liquid sponge phase can be performed by pulling the syringe plunger away from the sample in the back of the syringe. Lamellar phase can be easily identified through its birefringence with polarized light microscopy. These tests coupled with a pre-extrusion test are usually sufficient to justify a test in the injector.

The high repetition rate of XFELs requires a flow speed that cannot be adequately observed with low frame rate cameras. Therefore, the extrusion characterization is done using a high-speed camera (coupled to a high magnification lens) that can record time-lapse video. Video data is high-speed in that frames are recorded at 1000 fps, and also time-lapse in that video is recorded for 1 s every 30 s. This data collection scheme will allow for data collection during the entire sample test (about 10 min) without creating unmanageable video files. Even with this reduced data set size, video files may still be in excess of 50 GB. Care should be taken to ensure adequate storage is available to save video data before the test begins.

During the jet test (**Figure 1**), the sample should extrude a long (more than 200 μm) continuous column of LCP that moves at a nearly constant velocity (**Figure 2**). Samples that run in a dripping mode indicate that the sample viscosity is too low (**Figure 2**). Samples can often be recovered and mixed with more monoolein or paraffin to adapt viscosity. Samples that form a column should be tested with the high-speed camera. Data from the recording should show that the extrusion stays above a minimum speed dictated by your experimental parameters. Extrusion speed is determined by measuring the linear distance a feature in the LCP stream travels over a number of frames. Extrusion slow-downs that can be attributed to anomalous clogs warrant retesting. If they persist jetting should be improved by additives like paraffin, by reducing the density of crystals, or by selecting a larger diameter nozzle. Crystals not normally grown in a viscous medium (e.g., vapor diffusion) can be pelleted by centrifugation and incorporated into LCP or other viscous carriers. For examples, see previous publications^{24–27,29,30}.

FIGURE AND TABLE LEGENDS:

Figure 1: High-speed camera bench setup. A photograph of a typical benchtop setup with the essential parts labeled. The three-axis stage provides flexibility in framing and focusing the image. The injector (shown with the nozzle and reservoir attached) is mounted vertically, and directly in front of the objective lens. The illumination in this example is provided by a single fiber light illuminating the sample off axis and providing a bright field on the screen. A sample mounted and illuminated in this way provides an image like the one in inset B.

Figure 2: High-speed camera testing and data analysis. Pictured above are two LCP extrusion tests. Test A shows bR crystals in LCP extruding in a dripping mode indicating that the sample is not optimized. Test B shows LCP extrusion forming a continuous column of LCP where crystals can be tracked, and extrusion speed can be calculated. In this example, a crystal embedded in the LCP column (50 μm diameter) moves 301 μm in 8 ms (37.6 mm/s). Two data sets from different preparations of bacteriorhodopsin crystals in LCP are shown. Four (or more) data points from each second of time-lapse high-speed camera video (1 s of recording every 30 s) were plotted. A large spread between data points taken from a single second data collection period indicate short-term speed variation. While a moving average over the whole data series shows

the longer fluctuations in the flow. The top series is from a poorly extruding sample (high chance for light contamination with two consecutive pump laser pulses), and the bottom series is from a sample that performed optimally. The horizontal dotted line indicates the target extrusion speed set via the HPLC pump.

Figure 3: Sample preparation flowchart. Sample preparation starts with a high density of protein crystals embedded in LCP. The sample is then mixed with low transition temperature lipid, paraffin, and prepared LCP until the sample comes into the cubic phase, and passes a series of small tests to indicate that the sample will extrude in the injector.

Figure 4: Bacteriorhodopsin crystals as starting material. Crystals are grown in gas-tight syringes (A,) with LCP immersed in the precipitant solution. Crystallization is optimized for a high density of crystals with a possibly narrow size distribution (B).

Figure 5: Structural changes in bacteriorhodopsin. TR-SFX reveals ultra-fast changes in the structure of the proton pump bacteriorhodopsin. Here is pictured a model of bR derived from TR-SFX data obtained from crystals prepared using the protocols outlined in this work. The left panel shows the model with highlighted features in the retinal binding pocket. The right panel shows the changes in the retinal from femtoseconds to milliseconds. This figure was reproduced from Nogly et al. (2018)¹⁰ with permission.

Figure 6: The three-way coupler. The three-way coupler is a reduced dead-volume Y mixer designed for compatibility with gastight syringes. 3D renderings of the coupler, show an exploded view of the assembly (A), and a transparent view showing the mixing channel (B). The figure shows an inhomogeneous crystal distribution after mixing with the standard coupler (C), and the resultant suspension after mixing in the three-way coupler (D). Mixing is accomplished by pushing roughly half of the sample into another syringe (E), and then pushing both halves into the remaining syringe together as illustrated by the blue arrows(F).

Figure 7: Pre-injection testing indicators. During sample preparation, several small tests are used to indicate that the sample is in phase, and adequately viscous. Optical clarity is one indicator that the sample is likely in the cubic phase. (A) A turbid sample is shown in the syringe. (B) A clear sample is shown, note the graduation lines visible through the sample despite the high density of micro-crystals. When the lipid matrix is in the cubic phase, it remains solid-like when under no stress. A low-pressure test is performed by pulling the syringe away from the back of the sample. When the sample is too liquid-like (indicative of the sponge phase) the sample expands to fill the volume (C). In a positive result of the same test (D), the sample remains static despite the withdrawn plunger. Finally, a macro-scale extrusion test is performed by pressing a small amount of sample through the syringe coupler. A droplet forming at the nozzle tip (E) or a quickly bending cylinder of LCP indicates a sample that is not viscous enough. If the sample extrudes, forms a cylinder, which remains upright over time (F), then the sample may advance to high-speed camera testing.

DISCUSSION:

The TR-SFX method with the viscous extrusion injector has proven to be a viable technique for structural dynamics studies of bacteriorhodopsin^{9,10} and photosystem II¹³ and now seems ready to study proteins driving other photo biological processes such as light-driven ion transport or sensory perception^{5,50}. The protocols described above were designed to maximize the success of TR-SFX data collection on bacteriorhodopsin, yet we believe can act as a template to optimize data collection on other samples. In this way, much of the precious beamtime currently lost because of clogging or poor sample extrusion could instead be used to collect better data at more time delays.

The most difficult, and critical step in the protocol is the addition of small amounts of monoolein that brings the lipid matrix into the cubic phase (step 1.8). The difficulty lies in the subtlety of the phase transition and the negative effect on the sample when monoolein is added in excess.

Modifications to the methodology should be implemented to accommodate different protein crystals. These may not be compatible with the same additives or the amount or required mixing. On the other hand, breaking crystals into smaller pieces during the mixing process may not compromise diffraction quality and can even improve jetting for example when long needles break into shorter fragments. Different additives could be substituted in place of paraffin, which is added to improve flow speed stability⁹. MAG 7.9/9.7 is added to prevent the transition to lamellar phase that may occur when injecting into vacuum environments²⁰ (like the CXI endstation at LCLS), but may be omitted if the experiment is done at atmospheric pressure. In our experience, many crystals from soluble proteins can be stably incorporated into LCP, yet somewhat ironically membrane protein crystals not directly grown in lipidic mesophases often dissolve presumably because detergents are extracted from the crystal into the lipid-like environment surrounding them. In such cases, it should be tried to entirely replace LCP with an alternate viscous carrier^{24-27,29,30}.

Modifications to the high-speed camera test can accommodate samples where the crystals are not visible within the carrier. For example, illumination can be configured to record video using polarized light microscopy. This will cause birefringent crystals to appear (as a glow), and also reveals portions of the lipid matrix that are in the birefringent lamellar phase.

Modifications aside, it is critical that the protein crystal preparation meet as much as possible the following criteria. The crystals should be optimally sized to maximize diffraction while minimizing injector clogging. The crystal density should be high enough to yield a hit-rate sufficient to collect complete data sets, but not so dense as to compromise the jet stability (a density that is too high can usually be diluted; in the case of bR, adjustment to a hit rate of 10-30% usually worked well). The lipid matrix should be brought into the cubic phase, and the crystal suspension should be homogeneous.

TR-SFX holds major advantages over other time-resolved crystallography techniques like Laue diffraction because: radiation damage is limited due to the “diffraction before destruction” methodology, TR-SFX has a broad time resolution over many orders of magnitude and down to the femtosecond range, the small crystals allow for better photoactivation, and the photocycles

of interest need not be reversible.

TR-SFX at an XFEL using the high viscosity injector has significant advantages over a liquid jet injector in terms of sample savings. Directly comparing PYP⁶ and bR¹⁰, for example, indicates a reduction by the factor of 50 for the same amount of collected diffraction images. Liquid jets on the other hand have an advantage in that the flow is fast and, data collection runs at full speed (alternating dark and light frames), without regard to injector stream speed stability (or light contamination in dark frames). While the viscous jet does add new challenges, it is worth considering that liquid jet TR-SFX uses amounts of protein that may be absolutely unreasonable to produce for many biologically relevant systems.

Currently, viscous sample preparation for TR-SFX is limited by crystal compatibility with the delivery medium. Although there have been several alternative viscous carriers implemented, none have been found to work for all cases. Additionally, sample delivery with a high viscosity injector will always be subject to clogging, or slowing even with optimization using this protocol. Another limitation of the technique is the inherent reduction in hit rate when diluting the sample to bring it to the optimised extrudability.

In the future, TR-SFX methods can be extended from protein targets with natural chromophores to those with synthetic photoswitches. Time-resolved measurements on reactions that cannot be photoactivated must rely on mixing, temperature-jump, electric-fields, or other activation technologies that have yet to be adapted to serial crystallography. A combination of these triggering technologies together with increased availability of XFEL beamtime will, over time, lay the foundation to understand the structural dynamics of protein function on an atomic level.

ACKNOWLEDGMENTS:

We acknowledge Gebhard Schertler, Rafael Abela and Chris Milne for supporting the use of high viscosity injectors at the PSI. Richard Neutze and his team are acknowledged for discussions on time-resolved crystallography and sample delivery using high viscosity injectors. For financial support, we acknowledge the Swiss National Science Foundation for grants 31003A_141235, 31003A_159558 (to J.S.) and PZ00P3_174169 (to P.N.). This project has received funding from the European Union's Horizon 2020 research and innovation program under the Marie-Sklodowska-Curie grant agreement No 701646.

DISCLOSURES:

The authors declare no conflicting interests.

REFERENCES:

1. Neutze, R., Wouts, R., van der Spoel, D., Weckert, E., Hajdu, J. Potential for biomolecular imaging with femtosecond X-ray pulses. *Nature*. **406** (6797), 752–7, doi: 10.1038/35021099 (2000).
2. Chapman, H.N. et al. Femtosecond X-ray protein nanocrystallography. *Nature*. **470** (7332), 73–77, doi: 10.1038/nature09750 (2011).
3. Barty, A. et al. Self-terminating diffraction gates femtosecond X-ray nanocrystallography

524 measurements. *Nature photonics*. **6** (December), 35–40, doi: 10.1038/nphoton.2011.297 (2012).

525 4. Aquila, A. et al. Time-resolved protein nanocrystallography using an X-ray free-electron
526 laser. *Optics express*. **20** (3), 2706–16 (2012).

527 5. Panneels, V. et al. Time-resolved structural studies with serial crystallography: A new light
528 on retinal proteins. *Structural Dynamics*. **2** (4), 041718, doi: 10.1063/1.4922774 (2015).

529 6. Tenboer, J. et al. Time-resolved serial crystallography captures high-resolution
530 intermediates of photoactive yellow protein. *Science*. **346** (6214), 1242–1246, doi:
531 10.1126/science.1259357 (2014).

532 7. Pande, K. et al. Femtosecond structural dynamics drives the trans/cis isomerization in
533 photoactive yellow protein. *Science (New York, N.Y.)*. **352** (6286), 725–9, doi:
534 10.1126/science.aad5081 (2016).

535 8. Barends, T.R.M. et al. Direct observation of ultrafast collective motions in CO myoglobin
536 upon ligand dissociation. *Science (New York, N.Y.)*. **350** (6259), 445–50, doi:
537 10.1126/science.aac5492 (2015).

538 9. Nango, E. et al. A three-dimensional movie of structural changes in bacteriorhodopsin.
539 *Science*. **354** (6319), 1552–1557, doi: 10.1126/science.aah3497 (2016).

540 10. Nogly, P. et al. Retinal isomerization in bacteriorhodopsin captured by a femtosecond x-
541 ray laser. *Science*. **0094** (June), eaat0094, doi: 10.1126/science.aat0094 (2018).

542 11. Coquelle, N. et al. Chromophore twisting in the excited state of a photoswitchable
543 fluorescent protein captured by time-resolved serial femtosecond crystallography. *Nature*
544 *Chemistry*. **10** (1), 31–37, doi: 10.1038/nchem.2853 (2017).

545 12. Kupitz, C. et al. Serial time-resolved crystallography of photosystem II using a
546 femtosecond X-ray laser. *Nature*. doi: 10.1038/nature13453 (2014).

547 13. Suga, M. et al. Light-induced structural changes and the site of O=O bond formation in
548 PSII caught by XFEL. *Nature*. **543** (7643), 131–135, doi: 10.1038/nature21400 (2017).

549 14. Stagno, J.R. et al. Structures of riboswitch RNA reaction states by mix-and-inject XFEL
550 serial crystallography. *Nature*. **541** (7636), 242–246, doi: 10.1038/nature20599 (2017).

551 15. Wang, D., Weierstall, U., Pollack, L., Spence, J.C.H. Liquid Mixing Jet for XFEL Study of
552 Chemical Kinetics. *Journal of synchrotron radiation*. In **submit**, 1364–1366, doi:
553 10.1107/S160057751401858X (2014).

554 16. Hekstra, D.R., White, K.I., Socolich, M.A., Henning, R.W., Šrajer, V., Ranganathan, R.
555 Electric-field-stimulated protein mechanics. *Nature*. **540** (7633), 400–405, doi:
556 10.1038/nature20571 (2016).

557 17. Liu, W., Ishchenko, A., Cherezov, V. Preparation of microcrystals in lipidic cubic phase for
558 serial femtosecond crystallography. *Nature protocols*. **9** (9), 2123–2134, doi:
559 10.1038/nprot.2014.141 (2014).

560 18. Kupitz, C., Grotjohann, I., Conrad, C.E., Roy-Chowdhury, S., Fromme, R., Fromme, P.
561 Microcrystallization techniques for serial femtosecond crystallography using photosystem II from
562 *Thermosynechococcus elongatus* as a model system. *Philosophical transactions of the Royal*
563 *Society of London. Series B, Biological sciences*. **369** (1647), doi: 10.1098/rstb.2013.0316 (2014).

564 19. Falkner, J.C. et al. Generation of Size-Controlled, Submicrometer Protein Crystals.
565 *Chemistry of Materials*. **17** (10), 2679–2686, doi: 10.1021/cm047924w (2005).

566 20. Weierstall, U. et al. Lipidic cubic phase injector facilitates membrane protein serial
567 femtosecond crystallography. *Nature communications*. **5**, 3309, doi: 10.1038/ncomms4309

(2014).

21. Landau, E.M., Rosenbusch, J.P. Lipidic cubic phases: a novel concept for the crystallization of membrane proteins. *Proceedings of the National Academy of Sciences of the United States of America*. **93** (December), 14532–14535, doi: 10.1073/pnas.93.25.14532 (1996).
22. Caffrey, M. A comprehensive review of the lipid cubic phase or in meso method for crystallizing membrane and soluble proteins and complexes. *Acta Crystallographica Section F Structural Biology Communications*. **71** (1), 3–18, doi: 10.1107/S2053230X14026843 (2015).
23. Cherezov, V. Lipidic cubic phase technologies for membrane protein structural studies. *Current Opinion in Structural Biology*. **21** (4), 559–566, doi: 10.1016/j.sbi.2011.06.007 (2011).
24. Conrad, C.E. et al. A novel inert crystal delivery medium for serial femtosecond crystallography. *IUCrJ*. **2** (4), 421–430, doi: 10.1107/S2052252515009811 (2015).
25. Sugahara, M. et al. Hydroxyethyl cellulose matrix applied to serial crystallography. *Scientific Reports*. **7** (1), 703, doi: 10.1038/s41598-017-00761-0 (2017).
26. Sugahara, M. et al. Grease matrix as a versatile carrier of proteins for serial crystallography. *Nature Methods*. **12** (1), 61–63, doi: 10.1038/nmeth.3172 (2014).
27. Sugahara, M. et al. Oil-free hyaluronic acid matrix for serial femtosecond crystallography. *Scientific Reports*. **6** (1), 24484, doi: 10.1038/srep24484 (2016).
28. Botha, S. et al. Room-temperature serial crystallography at synchrotron X-ray sources using slowly flowing free-standing high-viscosity microstreams. *Acta Crystallographica Section D Biological Crystallography*. **71** (2), 387–397, doi: 10.1107/S1399004714026327 (2015).
29. Kováčsová, G. et al. Viscous hydrophilic injection matrices for serial crystallography. *IUCrJ*. **4** (4), 400–410, doi: 10.1107/S2052252517005140 (2017).
30. Martin-Garcia, J.M. et al. Serial millisecond crystallography of membrane and soluble protein microcrystals using synchrotron radiation. *IUCrJ*. **4** (4), 439–454, doi: 10.1107/S205225251700570X (2017).
31. Fromme, R. et al. Serial femtosecond crystallography of soluble proteins in lipidic cubic phase. *IUCrJ*. **2**, 545–551, doi: 10.1107/S2052252515013160 (2015).
32. Caffrey, M., Li, D., Howe, N., Shah, S.T.A. “Hit and run” serial femtosecond crystallography of a membrane kinase in the lipid cubic phase. *Philosophical Transactions of the Royal Society B: Biological Sciences*. **369** (1647), 20130621–20130621, doi: 10.1098/rstb.2013.0621 (2014).
33. Liu, W. et al. Serial femtosecond crystallography of G protein-coupled receptors. *Science (New York, N.Y.)*. **342** (6165), 1521–4, doi: 10.1126/science.1244142 (2013).
34. Zhang, H. et al. Structure of the Angiotensin Receptor Revealed by Serial Femtosecond Crystallography. *Cell*. **161** (4), 833–844, doi: 10.1016/j.cell.2015.04.011 (2015).
35. Fenalti, G. et al. Structural basis for bifunctional peptide recognition at human δ -opioid receptor. *Nature Structural & Molecular Biology*. (February), doi: 10.1038/nsmb.2965 (2015).
36. Kang, Y. et al. Crystal structure of rhodopsin bound to arrestin by femtosecond X-ray laser. *Nature*. **523** (7562), 561–567, doi: 10.1038/nature14656 (2015).
37. Ishchenko, A., Cherezov, V., Liu, W. Preparation and Delivery of Protein Microcrystals in Lipidic Cubic Phase for Serial Femtosecond Crystallography. *Journal of Visualized Experiments*. **9** (115), 2123–34, doi: 10.3791/54463 (2016).
38. Batyuk, A. et al. Native phasing of x-ray free-electron laser data for a G protein-coupled receptor. *Science Advances*. **2** (9), e1600292–e1600292, doi: 10.1126/sciadv.1600292 (2016).
39. Nakane, T. et al. Native sulfur/chlorine SAD phasing for serial femtosecond

crystallography. *Acta Crystallographica Section D Biological Crystallography*. **71** (12), 2519–2525, doi: 10.1107/S139900471501857X (2015).

40. Nogly, P. et al. Lipidic cubic phase serial millisecond crystallography using synchrotron radiation. *IUCrJ*. **2** (2), 168–176, doi: 10.1107/S2052252514026487 (2015).

41. Weinert, T. et al. Serial millisecond crystallography for routine room-temperature structure determination at synchrotrons. *Nature Communications*. **8** (1), 542, doi: 10.1038/s41467-017-00630-4 (2017).

42. Tosha, T. et al. Capturing an initial intermediate during the P450_{nor} enzymatic reaction using time-resolved XFEL crystallography and caged-substrate. *Nature Communications*. **8** (1), 1585, doi: 10.1038/s41467-017-01702-1 (2017).

43. Nogly, P. et al. Lipidic cubic phase injector is a viable crystal delivery system for time-resolved serial crystallography. *Nature Communications*. **7**, 12314, doi: 10.1038/ncomms12314 (2016).

44. Abela, R. et al. Perspective: Opportunities for ultrafast science at SwissFEL. *Structural Dynamics*. **4** (6), 061602, doi: 10.1063/1.4997222 (2017).

45. Marx, V. Structural biology: doors open at the European XFEL. *Nature Methods*. **14** (9), 843–846, doi: 10.1038/nmeth.4394 (2017).

46. Cheng, A., Hummel, B., Qiu, H., Caffrey, M. A simple mechanical mixer for small viscous lipid-containing samples. *Chemistry and Physics of Lipids*. **95** (1), 11–21, doi: 10.1016/S0009-3084(98)00060-7 (1998).

47. Qiu, H., Caffrey, M. The phase diagram of the monoolein/water system: Metastability and equilibrium aspects. *Biomaterials*. **21** (3), 223–234, doi: 10.1016/S0142-9612(99)00126-X (2000).

48. James, D. Injection Methods and Instrumentation for Serial X-ray Free Electron Laser Experiments (2015).

49. Schindelin, J. et al. Fiji: an open-source platform for biological-image analysis. *Nature Methods*. **9** (7), 676–682, doi: 10.1038/nmeth.2019 (2012).

50. Moffat, K. Femtosecond structural photobiology. *Science (New York, N.Y.)*. **361** (6398), 127–128, doi: 10.1126/science.aau3200 (2018).

Figure 1

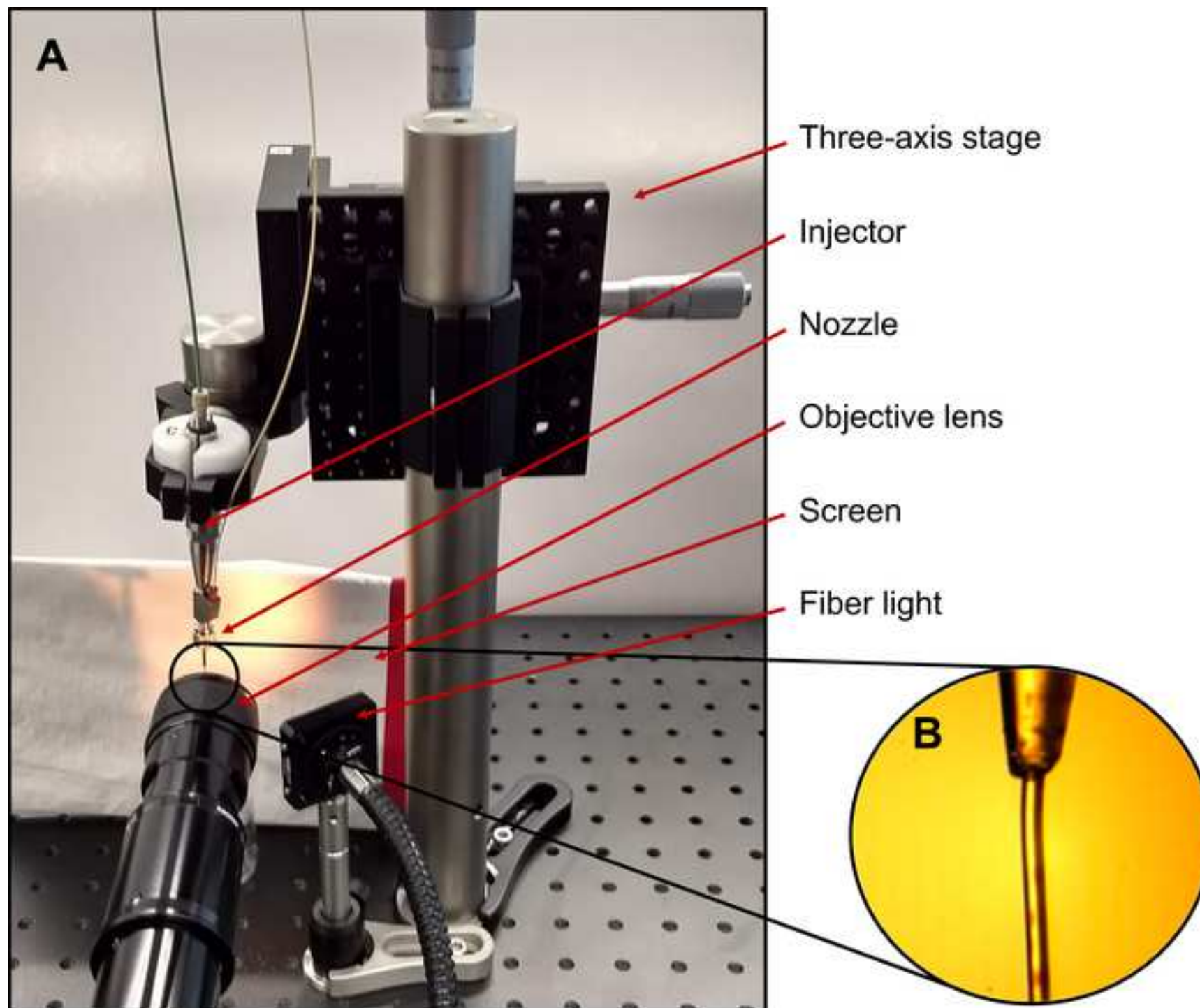
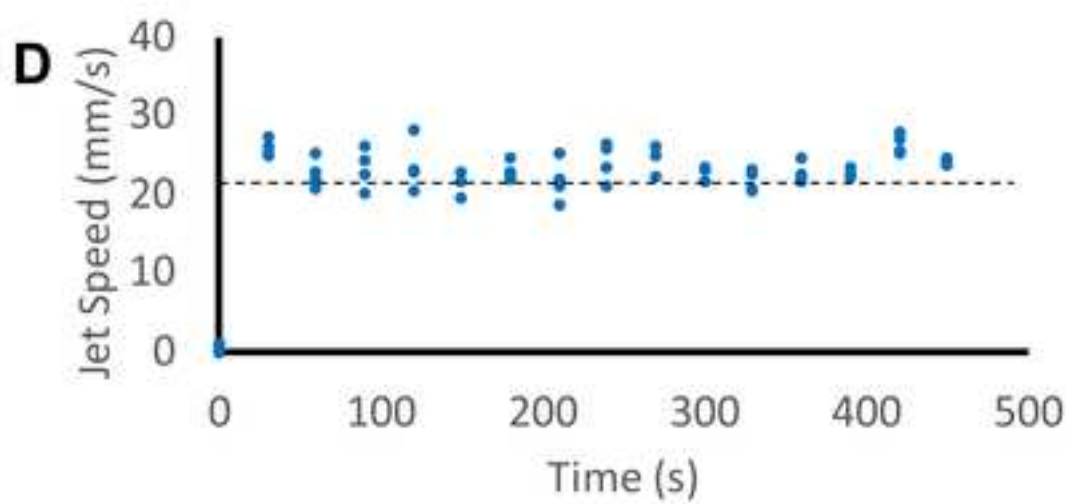
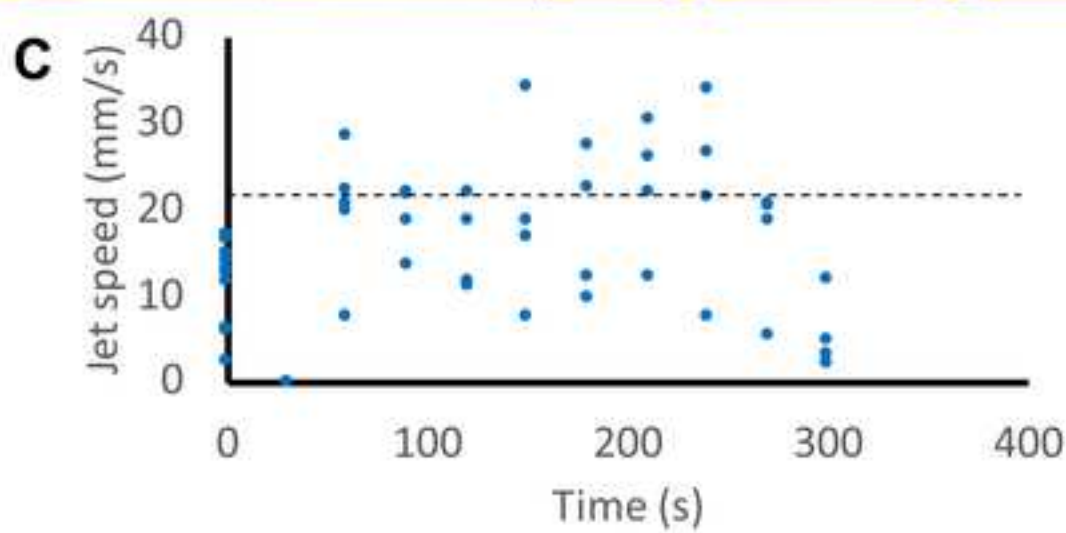
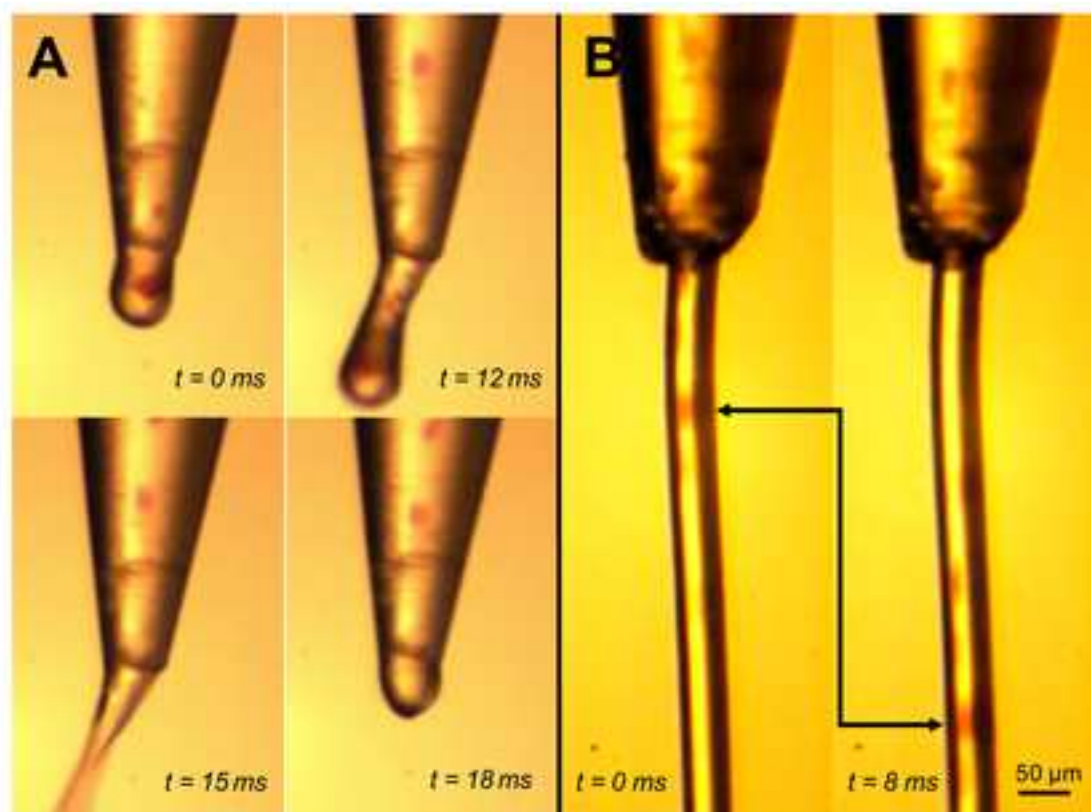
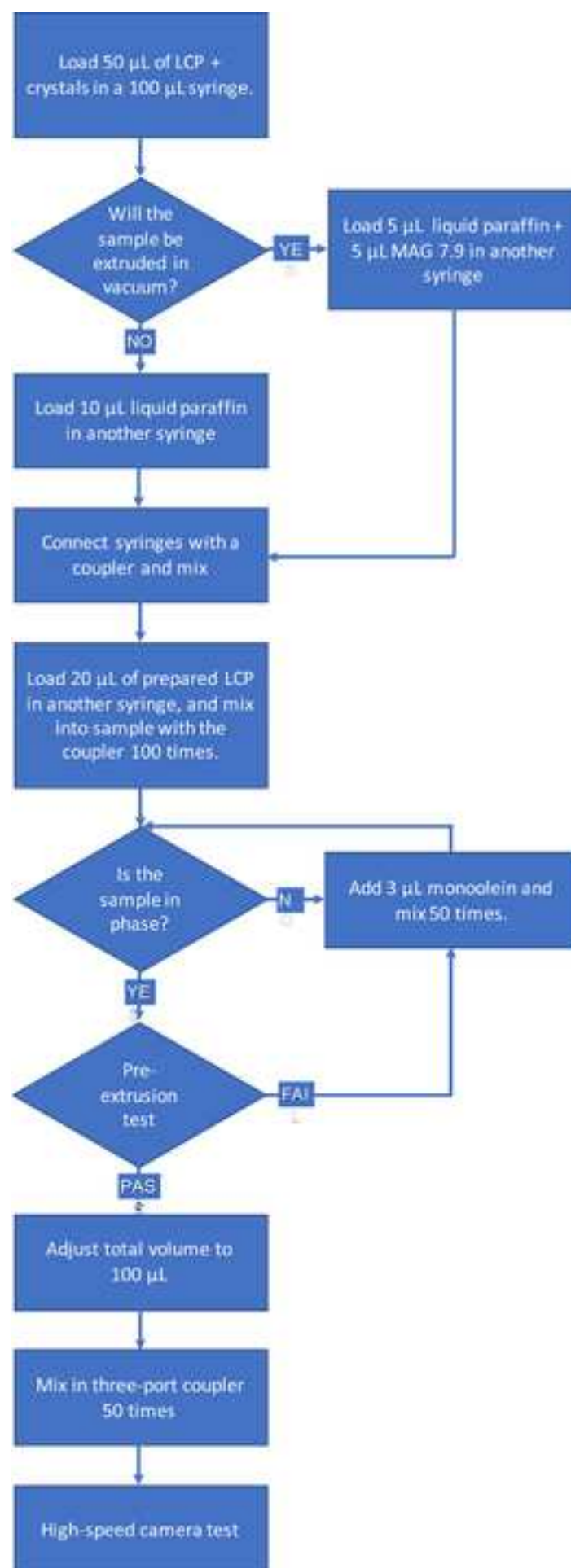


Figure 2

[Click here to access/download;Figure;Figure2_revised.psd](#)





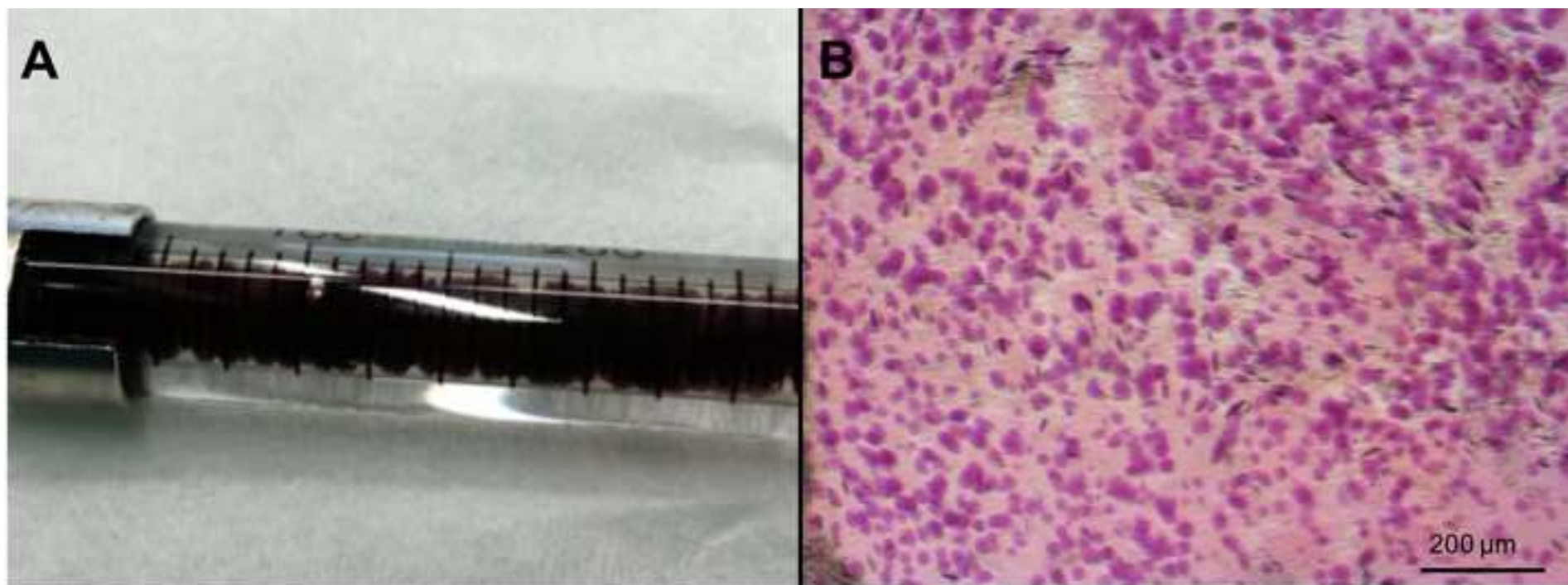


Figure 5

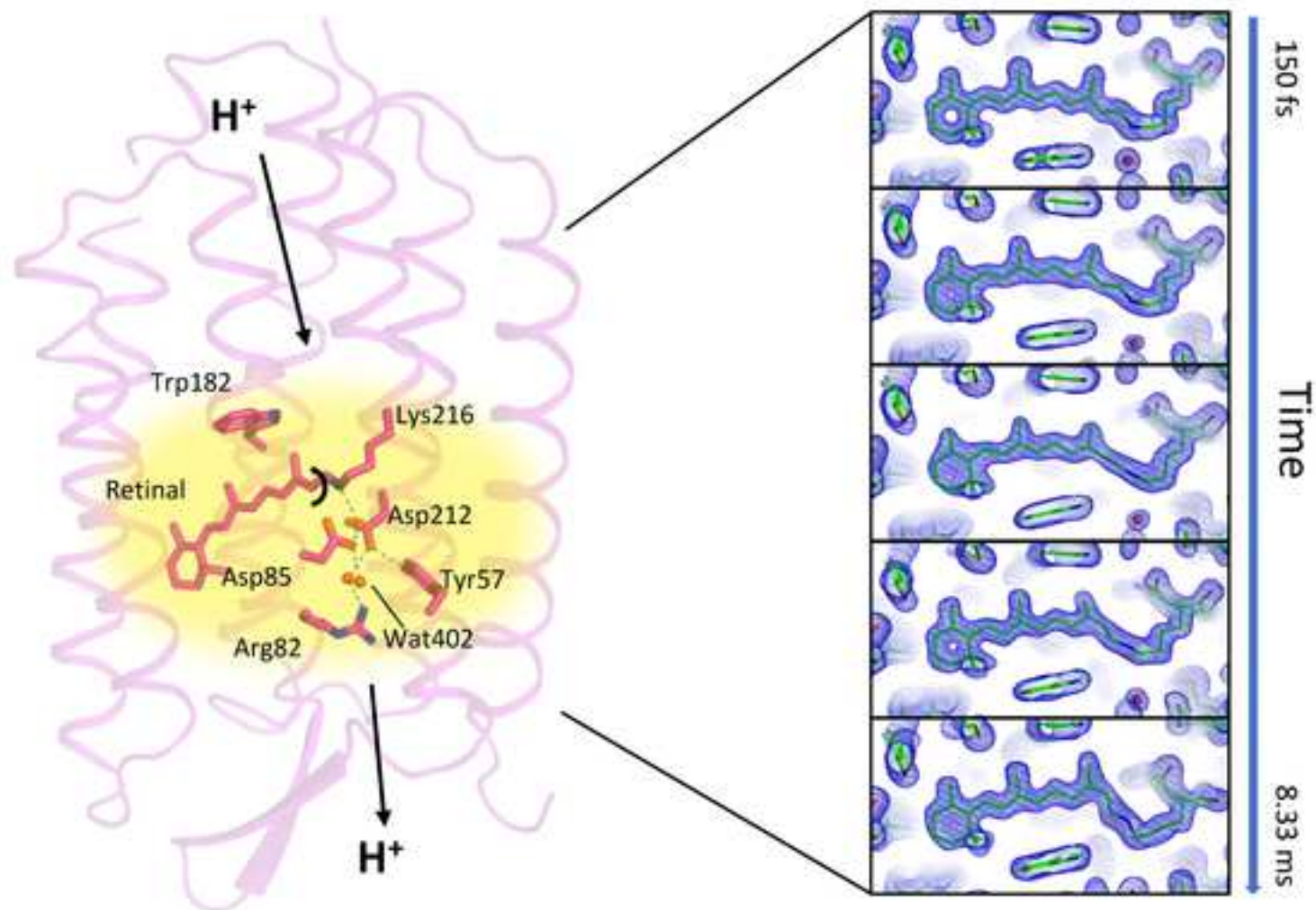


Figure 6

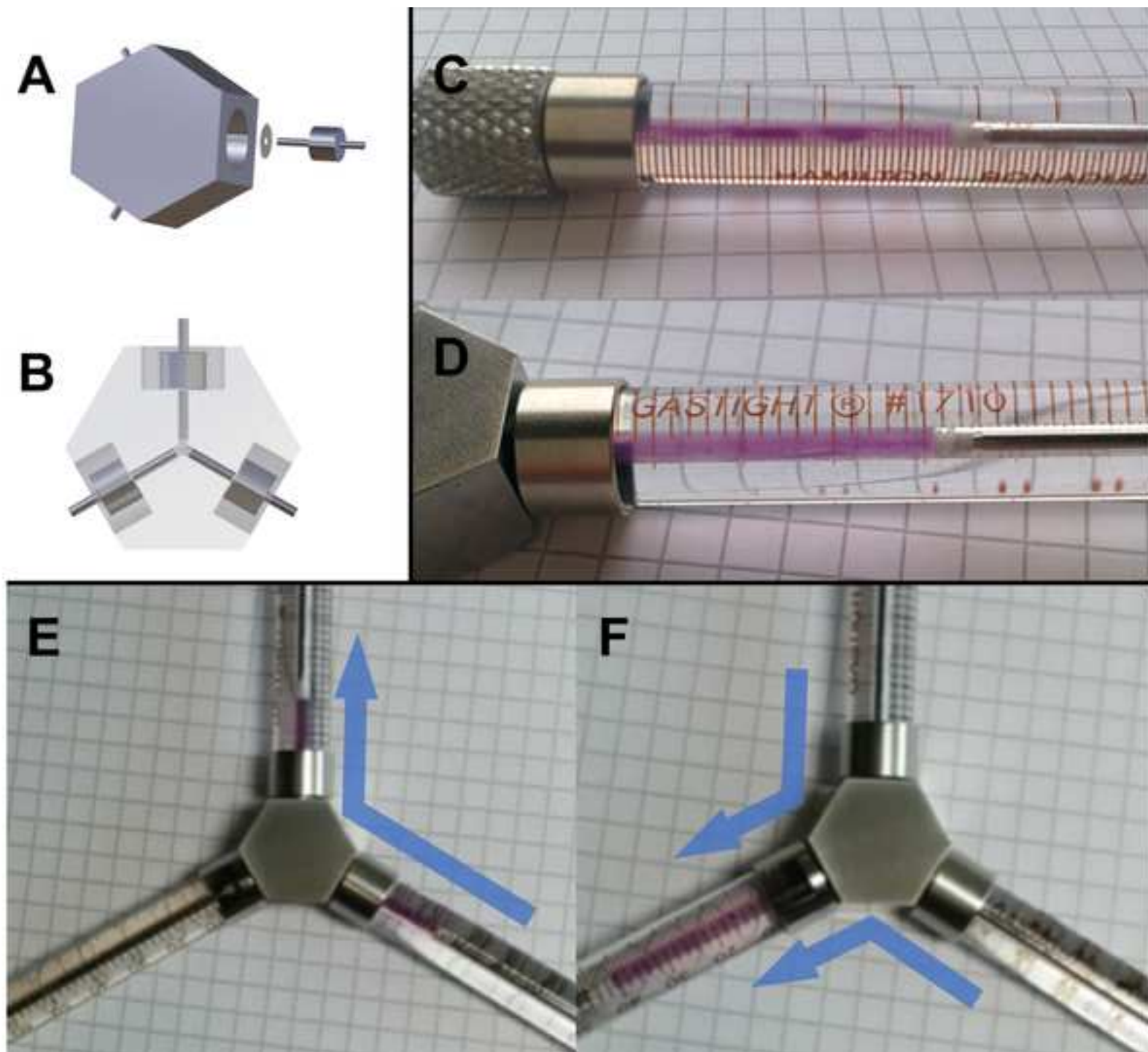
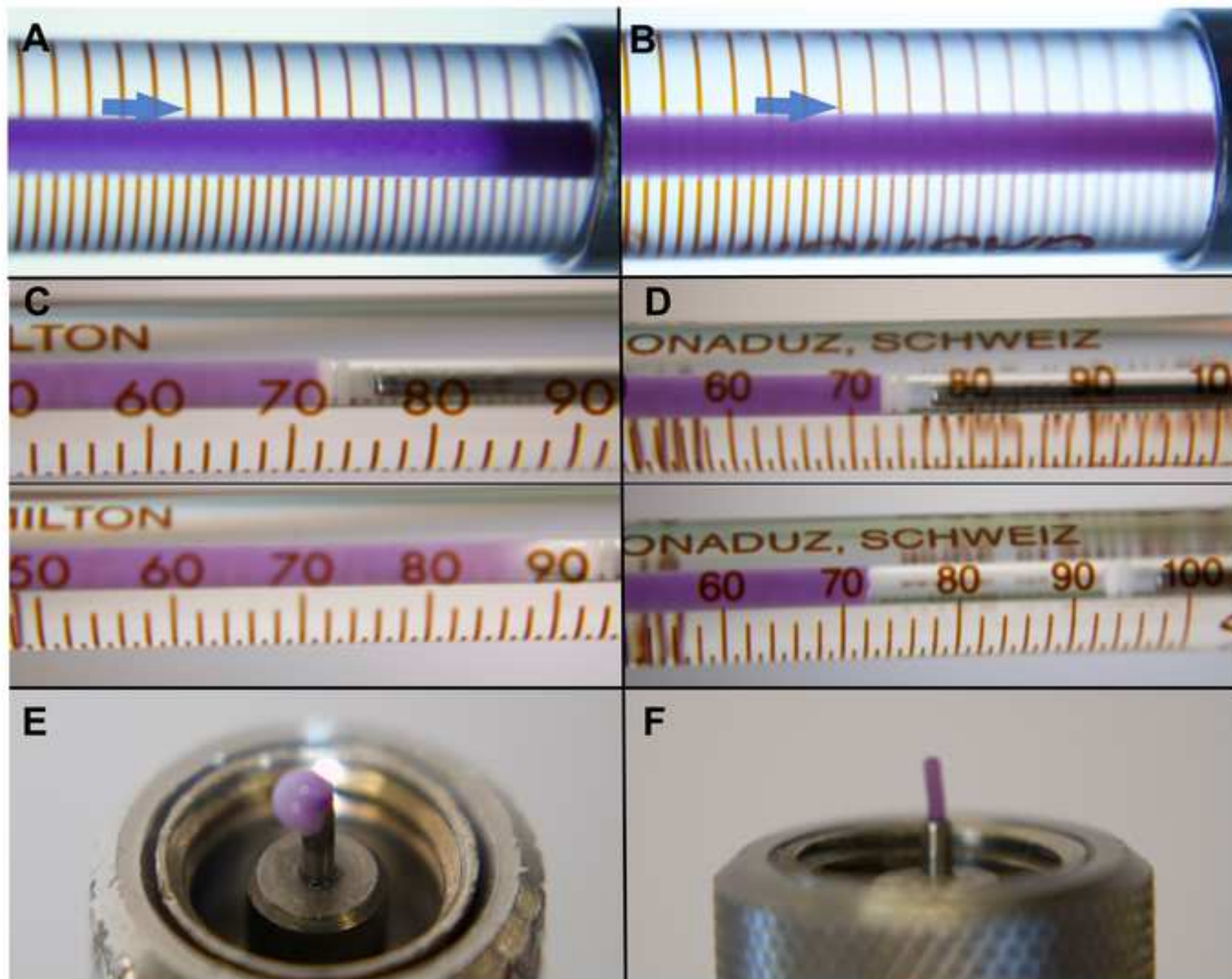


Figure 7



Name of Material/ Equipment	Company	Catalog Number	Comments/Description
Mosquito LCP Syringe Coupling	TTP labtech store	3072-01050	
Hamilton Syringe 1710 RNR, 100 µl	Hamilton	HA-81065	
Hamilton Syringe 1750 RNR, 500 µl	Hamilton	HA-81265	
Monoolein	Nu-Chek Prep, Inc.	M-239	
7.9 MAG	Avanti Polar Lipids Inc.	8505340	
50% w/v PEG 2000	Molecular Dimensions	MD2-250-7	
Paraffin (liquid)	Sigma-Aldrich	1.07162	
High speed camera	Photron		Photron Mini AX
High magnification lens	Navitar		12X Zoom Lens System
Three axis stage	ThorLabs	PT3/M	
Fiber light	Thorlabs	OSL2	
Fused silica fiber	Molex/Polymicro	TSP-505375	
Lite touch ferrule	IDEX	LT-100	
ASU high viscosity injector	Arizona State University		Purchasable from Uwe Weierstall (weier@asu.edu)
HPLC pump	Shimadzu	LC-20AD	
Electronic gas regulator	Proportion Air	GP1	

edu)



1 Alewife Center #200
Cambridge, MA 02140
tel. 617.945.9051
www.jove.com

ARTICLE AND VIDEO LICENSE AGREEMENT

Title of Article:

Improving high viscosity extrusion of microcrystals for time-resolved serial femtosecond crystallography at X-ray lasers

Author(s):

Daniel James, Tobias Weinert, Petr Skopintsev, Antonia Furrer, Dardan Gashi, Tomoyuki Tanaka, Eriko Nango, Przemyslaw Nogly, Jörg Standfuss

Item 1 (check one box): The Author elects to have the Materials be made available (as described at <http://www.jove.com/author>) via: ☒ Standard Access ☐ Open Access

Item 2 (check one box):

- ☒ The Author is NOT a United States government employee.
- ☐ The Author is a United States government employee and the Materials were prepared in the course of his or her duties as a United States government employee.
- ☐ The Author is a United States government employee but the Materials were NOT prepared in the course of his or her duties as a United States government employee.

ARTICLE AND VIDEO LICENSE AGREEMENT

1. **Defined Terms.** As used in this Article and Video License Agreement, the following terms shall have the following meanings: “**Agreement**” means this Article and Video License Agreement; “**Article**” means the article specified on the last page of this Agreement, including any associated materials such as texts, figures, tables, artwork, abstracts, or summaries contained therein; “**Author**” means the author who is a signatory to this Agreement; “**Collective Work**” means a work, such as a periodical issue, anthology or encyclopedia, in which the Materials in their entirety in unmodified form, along with a number of other contributions, constituting separate and independent works in themselves, are assembled into a collective whole; “**CRC License**” means the Creative Commons Attribution-Non Commercial-No Derivs 3.0 Unported Agreement, the terms and conditions of which can be found at: <http://creativecommons.org/licenses/by-nc-nd/3.0/legalcode>; “**Derivative Work**” means a work based upon the Materials or upon the Materials and other pre-existing works, such as a translation, musical arrangement, dramatization, fictionalization, motion picture version, sound recording, art reproduction, abridgment, condensation, or any other form in which the Materials may be recast, transformed, or adapted; “**Institution**” means the institution, listed on the last page of this Agreement, by which the Author was employed at the time of the creation of the Materials; “**JoVE**” means MyJoVE Corporation, a Massachusetts corporation and the publisher of *The Journal of Visualized Experiments*; “**Materials**” means the Article and / or the Video; “**Parties**” means the Author and JoVE; “**Video**” means any video(s) made by the Author, alone or in conjunction with any other parties, or by JoVE or its affiliates or agents, individually or in collaboration with the Author or any other parties, incorporating all or any portion of the Article, and in which the Author may or may not appear.

2. **Background.** The Author, who is the author of the Article, in order to ensure the dissemination and protection of the Article, desires to have the JoVE publish the Article and create and transmit videos based on the Article. In furtherance of such goals, the Parties desire to memorialize in this Agreement the respective rights of each Party in and to the Article and the Video.

3. **Grant of Rights in Article.** In consideration of JoVE agreeing to publish the Article, the Author hereby grants to JoVE, subject to **Sections 4 and 7** below, the exclusive, royalty-free, perpetual (for the full term of copyright in the Article, including any extensions thereto) license (a) to publish, reproduce, distribute, display and store the Article in all forms, formats and media whether now known or hereafter developed (including without limitation in print, digital and electronic form) throughout the world, (b) to translate the Article into other languages, create adaptations, summaries or extracts of the Article or other Derivative Works (including, without limitation, the Video) or Collective Works based on all or any portion of the Article and exercise all of the rights set forth in (a) above in such translations, adaptations, summaries, extracts, Derivative Works or Collective Works and (c) to license others to do any or all of the above. The foregoing rights may be exercised in all media and formats, whether now known or hereafter devised, and include the right to make such modifications as are technically necessary to exercise the rights in other media and formats. If the “Open Access” box has been checked in **Item 1** above, JoVE and the Author hereby grant to the public all such rights in the Article as provided in, but subject to all limitations and requirements set forth in, the CRC License.

ARTICLE AND VIDEO LICENSE AGREEMENT

4. **Retention of Rights in Article.** Notwithstanding the exclusive license granted to JoVE in **Section 3** above, the Author shall, with respect to the Article, retain the non-exclusive right to use all or part of the Article for the non-commercial purpose of giving lectures, presentations or teaching classes, and to post a copy of the Article on the Institution's website or the Author's personal website, in each case provided that a link to the Article on the JoVE website is provided and notice of JoVE's copyright in the Article is included. All non-copyright intellectual property rights in and to the Article, such as patent rights, shall remain with the Author.

5. **Grant of Rights in Video – Standard Access.** This **Section 5** applies if the "Standard Access" box has been checked in **Item 1** above or if no box has been checked in **Item 1** above. In consideration of JoVE agreeing to produce, display or otherwise assist with the Video, the Author hereby acknowledges and agrees that, Subject to **Section 7** below, JoVE is and shall be the sole and exclusive owner of all rights of any nature, including, without limitation, all copyrights, in and to the Video. To the extent that, by law, the Author is deemed, now or at any time in the future, to have any rights of any nature in or to the Video, the Author hereby disclaims all such rights and transfers all such rights to JoVE.

6. **Grant of Rights in Video – Open Access.** This **Section 6** applies only if the "Open Access" box has been checked in **Item 1** above. In consideration of JoVE agreeing to produce, display or otherwise assist with the Video, the Author hereby grants to JoVE, subject to **Section 7** below, the exclusive, royalty-free, perpetual (for the full term of copyright in the Article, including any extensions thereto) license (a) to publish, reproduce, distribute, display and store the Video in all forms, formats and media whether now known or hereafter developed (including without limitation in print, digital and electronic form) throughout the world, (b) to translate the Video into other languages, create adaptations, summaries or extracts of the Video or other Derivative Works or Collective Works based on all or any portion of the Video and exercise all of the rights set forth in (a) above in such translations, adaptations, summaries, extracts, Derivative Works or Collective Works and (c) to license others to do any or all of the above. The foregoing rights may be exercised in all media and formats, whether now known or hereafter devised, and include the right to make such modifications as are technically necessary to exercise the rights in other media and formats. For any Video to which this Section 6 is applicable, JoVE and the Author hereby grant to the public all such rights in the Video as provided in, but subject to all limitations and requirements set forth in, the CRC License.

7. **Government Employees.** If the Author is a United States government employee and the Article was prepared in the course of his or her duties as a United States government employee, as indicated in **Item 2** above, and any of the licenses or grants granted by the Author hereunder exceed the scope of the 17 U.S.C. 403, then the rights granted hereunder shall be limited to the maximum rights permitted under such

statute. In such case, all provisions contained herein that are not in conflict with such statute shall remain in full force and effect, and all provisions contained herein that do so conflict shall be deemed to be amended so as to provide to JoVE the maximum rights permissible within such statute.

8. **Likeness, Privacy, Personality.** The Author hereby grants JoVE the right to use the Author's name, voice, likeness, picture, photograph, image, biography and performance in any way, commercial or otherwise, in connection with the Materials and the sale, promotion and distribution thereof. The Author hereby waives any and all rights he or she may have, relating to his or her appearance in the Video or otherwise relating to the Materials, under all applicable privacy, likeness, personality or similar laws.

9. **Author Warranties.** The Author represents and warrants that the Article is original, that it has not been published, that the copyright interest is owned by the Author (or, if more than one author is listed at the beginning of this Agreement, by such authors collectively) and has not been assigned, licensed, or otherwise transferred to any other party. The Author represents and warrants that the author(s) listed at the top of this Agreement are the only authors of the Materials. If more than one author is listed at the top of this Agreement and if any such author has not entered into a separate Article and Video License Agreement with JoVE relating to the Materials, the Author represents and warrants that the Author has been authorized by each of the other such authors to execute this Agreement on his or her behalf and to bind him or her with respect to the terms of this Agreement as if each of them had been a party hereto as an Author. The Author warrants that the use, reproduction, distribution, public or private performance or display, and/or modification of all or any portion of the Materials does not and will not violate, infringe and/or misappropriate the patent, trademark, intellectual property or other rights of any third party. The Author represents and warrants that it has and will continue to comply with all government, institutional and other regulations, including, without limitation all institutional, laboratory, hospital, ethical, human and animal treatment, privacy, and all other rules, regulations, laws, procedures or guidelines, applicable to the Materials, and that all research involving human and animal subjects has been approved by the Author's relevant institutional review board.

10. **JoVE Discretion.** If the Author requests the assistance of JoVE in producing the Video in the Author's facility, the Author shall ensure that the presence of JoVE employees, agents or independent contractors is in accordance with the relevant regulations of the Author's institution. If more than one author is listed at the beginning of this Agreement, JoVE may, in its sole discretion, elect not take any action with respect to the Article until such time as it has received complete, executed Article and Video License Agreements from each such author. JoVE reserves the right, in its absolute and sole discretion and without giving any reason therefore, to accept or decline any work submitted to JoVE. JoVE and its employees, agents and independent contractors shall have

ARTICLE AND VIDEO LICENSE AGREEMENT

full, unfettered access to the facilities of the Author or of the Author's institution as necessary to make the Video, whether actually published or not. JoVE has sole discretion as to the method of making and publishing the Materials, including, without limitation, to all decisions regarding editing, lighting, filming, timing of publication, if any, length, quality, content and the like.

11. **Indemnification.** The Author agrees to indemnify JoVE and/or its successors and assigns from and against any and all claims, costs, and expenses, including attorney's fees, arising out of any breach of any warranty or other representations contained herein. The Author further agrees to indemnify and hold harmless JoVE from and against any and all claims, costs, and expenses, including attorney's fees, resulting from the breach by the Author of any representation or warranty contained herein or from allegations or instances of violation of intellectual property rights, damage to the Author's or the Author's institution's facilities, fraud, libel, defamation, research, equipment, experiments, property damage, personal injury, violations of institutional, laboratory, hospital, ethical, human and animal treatment, privacy or other rules, regulations, laws, procedures or guidelines, liabilities and other losses or damages related in any way to the submission of work to JoVE, making of videos by JoVE, or publication in JoVE or elsewhere by JoVE. The Author shall be responsible for, and shall hold JoVE harmless from, damages caused by lack of sterilization, lack of cleanliness or by contamination due to the making of a video by JoVE its employees, agents or independent contractors. All sterilization, cleanliness or decontamination procedures shall be solely the responsibility of the Author and shall be undertaken at the Author's


expense. All indemnifications provided herein shall include JoVE's attorney's fees and costs related to said losses or damages. Such indemnification and holding harmless shall include such losses or damages incurred by, or in connection with, acts or omissions of JoVE, its employees, agents or independent contractors.

12. **Fees.** To cover the cost incurred for publication, JoVE must receive payment before production and publication the Materials. Payment is due in 21 days of invoice. Should the Materials not be published due to an editorial or production decision, these funds will be returned to the Author. Withdrawal by the Author of any submitted Materials after final peer review approval will result in a US\$1,200 fee to cover pre-production expenses incurred by JoVE. If payment is not received by the completion of filming, production and publication of the Materials will be suspended until payment is received.

13. **Transfer, Governing Law.** This Agreement may be assigned by JoVE and shall inure to the benefits of any of JoVE's successors and assignees. This Agreement shall be governed and construed by the internal laws of the Commonwealth of Massachusetts without giving effect to any conflict of law provision thereunder. This Agreement may be executed in counterparts, each of which shall be deemed an original, but all of which together shall be deemed to be one and the same agreement. A signed copy of this Agreement delivered by facsimile, e-mail or other means of electronic transmission shall be deemed to have the same legal effect as delivery of an original signed copy of this Agreement.

A signed copy of this document must be sent with all new submissions. Only one Agreement required per submission.

CORRESPONDING AUTHOR:

Name: **Jörg Standfuss**
Department: **Division of Biology and Chemistry**
Institution: **Paul Scherrer Institut**
Article Title: **Improving high viscosity extrusion of microcrystals for time-resolved serial femtosecond crystallography at X-ray lasers**
Signature:  Date: **11 September 2018**

Please submit a signed and dated copy of this license by one of the following three methods:

- 1) Upload a scanned copy of the document as a pdf on the JoVE submission site;
- 2) Fax the document to +1.866.381.2236;
- 3) Mail the document to JoVE / Attn: JoVE Editorial / 1 Alewife Center #200 / Cambridge, MA 02139

For questions, please email submissions@jove.com or call +1.617.945.9051

Dear Bing Wu and Reviewers,

We wish to thank you for the time spent in reviewing, commenting, and editing our manuscript. We are pleased with the constructive and positive comments we have received and feel that with your feedback the manuscript (and especially the protocol section) will be improved.

The editorial and reviewer comments were few in number, and are addressed below point by point. We look forward to receiving your final decision on the manuscript.

With best regards,

Joerg Standfuss on behalf of all authors

Point by point Reply to the editorial and peer review comments:

Comments in *blue*; our response in *black*.

Editorial Comments:

1. Please take this opportunity to thoroughly proofread the manuscript to ensure that there are no spelling or grammar issues.

A few edits were made to correct minor punctuation errors. As well edits to the equations for clarity.

2. **Keywords:** Please provide at least 6 keywords or phrases.

Added “Membrane proteins”, “Three-way coupler” and “X-ray free electron laser” to bring the total key-words/phrases to seven.

3. Please revise the protocol text to avoid the use of any personal pronouns (e.g., “we”, “you”, “our” etc.).

A thorough search shows that the protocol section as written complies with this requirement.

4. Please revise the protocol to contain only action items that direct the reader to do something (e.g., “Do this,” “Ensure that,” etc.). The actions should be described in the imperative tense in complete sentences wherever possible. Avoid usage of phrases such as “could be,” “should be,” and “would be”

A review of the protocol text shows that the text complies with this requirement.

5. throughout the Protocol. Any text that cannot be written in the imperative tense may be added as a “Note.” Please include all safety procedures and use of hoods, etc. However, notes should be used sparingly and actions should be described in the imperative tense wherever possible.

Changes have been made to the notes (see below) to comply with this requirement.

6. In the JoVE Protocol format, “Notes” should be concise and used sparingly. They should only be used to provide extraneous details, optional steps, or recommendations that are not critical to a step. Any text that provides details about how to perform a particular step should either be included in the step itself or added as a sub-step. Please consider moving some of the notes about the protocol to the discussion section.

We see that our excessive use of notes in the protocol is unneeded, and is distracting for the reader. The following actions were taken to reduce our use of notes:

The note under step 1 was deleted. Information pertinent to the paper was moved into the Starting Material section in the representative results.

The note under step 1.2 was deleted. Information in this note was inserted into the discussion section (second paragraph).

The note under step 1.9 was deleted. Information in this note was moved to the High-speed camera section of the representative results.

The note under step 1.12 was deleted. The information here is not particularly relevant to the method.

The note under step 2 was deleted. Information was moved to the introduction (paragraph 6) and the High-speed camera section of the representative results.

The note under step 2.1.1 was shortened.

The note under step 2.1.2 was deleted.

The note under step 2.2 was edited for brevity.

The note under step 2.2.2 was made into a step (the new step 2.2.3).

The note under step 2.3 was deleted. Information was moved to the Highspeed camera section of the representative results.

The note under step 2.7 was deleted and incorporated into step 2.1.3, and step 2.7.

The note under step 2.9 was deleted and incorporated into step 2.9.

The note under step 2.11.7 was deleted.

7. 2.11.4: Please specify the software tools used to measure the distance.

The phrase “software tools” was replaced with “straight line measurement tool”.

8. Please number the figures in the sequence in which you refer to them in the manuscript text.

The figures have been renumbered according to the order that they appear in the manuscript.

9. Please reference all figures in the manuscript. For instance, Figure 6 and Figure 7 are not described in the manuscript.

References to Figure 7 (now Figure 3) and Figure 6 (now Figure 5) were added in the representative results section.

10. Figure 3: Please explain what the blue arrows represent.

Added “as illustrated by the blue arrows” to the figure legend.

11. Figure 5: Please add panel labels to the two scatter plots. Please change “sec” to “s” for the time unit.

The changes have been made as suggested.

12. Figure 7: Please insert a space between number and its corresponding unit (i.e., 3 μL).

The change has been made as suggested.

13. Table of Materials: Please replace “ul” with “μL”.

The changes have been made as suggested.

14. Discussion: Please also discuss critical steps within the protocol and any limitations of the technique.

Two paragraphs have been added to the discussion section to address these items.

Reviewers' comments:

Reviewer #1:

Manuscript Summary:

James et al. introduced an improved protocol for the high viscosity sample inject for time-resolved serial femtosecond crystallography, which is very suitable for the publication at JoVE.

We thank the reviewer for their recommendation.

Major Concerns:

None.

Minor Concerns:

1. Page 5 line 149, suggest change "Bacteriorhodopsin" to "Protein". Authors used Bacteriorhodopsin for the demonstration purpose in the manuscript, but it will be a little confusing as readers may think it just works with Bacteriorhodopsin.

This is a good suggestion as it does suggest that the method is adaptable. The line now reads “Protein crystal sample preparation protocol.”

2. The lipidic cubic phase has been referred to LCP, mesophase and cubic phase in the manuscript, should be consistent.

This is a good suggestion for improving readability. However, there are subtle differences in meaning between the three terms. For that reason, which term we use and where we use them was carefully reviewed. We have changed a few instances of “cubic phase” to “LCP” and deleted one redundant use of the term “mesophase”.

3. Three-way coupler is a very interesting device, author can share more information about its availability, since it can't be purchased through commercial vendors.

The three-way coupler is a custom-made part manufactured at the Paul Scherrer Institute. Currently there is no plan in place to distribute this device, but we certainly do not object to making these available after the fabrication becomes standardized.

Reviewer #2:

Manuscript Summary:

This presented manuscript is very well written, comprehensible, technically sound and certainly of high interest for the community working in the field, as well as for the general readership.

The paper certainly deserves publication.

All experiments described were performed conclusive.

The authors describe a way to slightly optimize LDC sample preparation (3-way mixing) and delivery/stability (camera setup). It is well written understandable and literature is adequately cited and I again recommend it for publication.

We thank the reviewer for their kind remarks and recommendation.

However, it need to be ensured that the protein and other material is specified in all possible detail, as different batches of membrane proteins may significantly vary in quality.

The table of materials contains all material that was used to perform the work outlined in the protocols. Protein and crystallization materials were not included, but may be found in the papers referenced in the Starting Materials section in the representative results.

Although the authors should provide some data or information in the discussion, if and how the protocol can or cannot be adjusted (which appropriate parameters or paranter range) to transfer the protocol to other proteins, different to bacteriorhodopsin and eventual to water soluble proteins and protein complexes, RNA ect.

Modifications are addressed in the discussion section, but are kept general because the variability between samples or viscous carriers is too large. The criteria by which we judge successful sample optimization are listed in the discussion section.

Major Concerns:

none

Minor Concerns:

see above

Dear Bing Wu,

We wish to thank you for the time spent in reviewing, commenting, and editing our manuscript. The editorial comments are addressed below point by point.

With best regards,

Joerg Standfuss on behalf of all authors

Point by point Reply to the editorial and peer review comments:

Comments in *blue*; our response in *black*.

Editorial comments:

1. Please take this opportunity to thoroughly proofread the manuscript to ensure that there are no spelling or grammar issues.

A few spelling and grammar errors were corrected.

2. The Summary is over the 50 word limit.

The summary was reworded to 49 words.

3. Please use h, min, s for time units.

Instances of the word second, where appropriate, were changed to s.

4. For steps that are done using software, a step-wise description of software usage must be included in the step. Please mention what button is clicked on in the software, or which menu items need to be selected to perform the step.

A new step was inserted to explain the calibration procedure. The proper names of the buttons and the menu paths were given for each operation in the software.

5. Please remove all headers from Representative Results.

Headings were removed per the requirement.