

# Journal of Visualized Experiments

## The Left Pneumonectomy combined with Monocrotaline or Sugén as a Model of Pulmonary Hypertension in Rats --Manuscript Draft--

<b>Article Type:</b>	Invited Methods Article - JoVE Produced Video
<b>Manuscript Number:</b>	JoVE59050R2
<b>Full Title:</b>	The Left Pneumonectomy combined with Monocrotaline or Sugén as a Model of Pulmonary Hypertension in Rats
<b>Keywords:</b>	Pulmonary hypertension, surgical models, monocrotaline, Sugén, pneumonectomy, right heart failure, lung histology
<b>Corresponding Author:</b>	Sarah Gubara Icahn School of Medicine at Mount Sinai New York, NY UNITED STATES
<b>Corresponding Author's Institution:</b>	Icahn School of Medicine at Mount Sinai
<b>Corresponding Author E-Mail:</b>	sarah.gubara@mssm.edu
<b>Order of Authors:</b>	Lahouaria Hadri Michael G Katz Sarah Gubara Anthony Fagnoli Roger J Hajjar Charles R Bridges Malik Bisserier Yassine Sassi
<b>Additional Information:</b>	
<b>Question</b>	<b>Response</b>
Please indicate whether this article will be Standard Access or Open Access.	Standard Access (US\$2,400)
Please indicate the <b>city, state/province, and country</b> where this article will be <b>filmed</b> . Please do not use abbreviations.	New York, NY, USA

**To:** Indrani Mukherjee, PhD  
**Senior Science Editor, Journal of Visualized Experiments**

**From:** **Michael G. Katz, MD, PhD and Lahouaria Hadri, PhD**  
Icahn School of Medicine at Mount Sinai, Department of Cardiology, New York, NY

**Date:** 9/4/2018

*Dear Dr. Mukherjee,*

Our department has appreciated your journal's commitment to advocating solid, peer-reviewed manuscripts in the field of visualized experiments.

We commend your efforts and would like to contribute with an original manuscript we have written which we feel may be of interest to your readership. Entitled, **"The Left Pneumonectomy combined with Monocrotaline or Sugen as a Model of Pulmonary Hypertension in Rats."**

This article includes two figures and describes a new technique of left unilateral pneumonectomy combined with MCT or Sugen as a model of pulmonary hypertension.

This manuscript has not been duplicated, published, or submitted elsewhere. All co-authors have reviewed this submission in its entirety and have no related disclosures or conflicts of interest to report. Furthermore, if this work will be accepted, authors will transfer copyright to the Publisher.

We hope that you find our work meriting exposure to your readership.

Thank you for your time and consideration.

Kindest regards-

*Michael G. Katz, Lahouaria Hadri*

**Corresponding Author:** *Dr. Lahouaria Hadri, Cardiovascular Research Center, Icahn School of Medicine at Mount Sinai, 1470 Madison Ave, Box 1030, New York, New York 10029-6574, USA.  
Tel: 1-212-824-8912, Fax: 1-212-241-4080, E-mail: Lahouaria.hadri@mssm.edu*

**TITLE:**

The Left Pneumonectomy combined with Monocrotaline or Sugen as a Model of Pulmonary Hypertension in Rats

**AUTHOR AFFILIATION:**

Katz MG, Fargnoli AS, Gubara SM, Bissierier M, Sassi Y, Bridges CR, Hajjar RJ, Hadri L.  
Cardiovascular Research Center, Department of Cardiology, Icahn School of Medicine at Mount Sinai, New York, NY

**Corresponding Author:**

Lahouaria Hadri  
Lahouaria.Hadri@mssm.edu

**Email Addresses of Co-authors:**

Michael G Katz (Michael.Katz1@mssm.edu)  
Anthony S Fargnoli (anthony.fargnoli@mssm.edu)  
Sarah M Gubara (sarah.gubara@mssm.edu)  
Charles R Bridges (Charles.Bridges@mssm.edu)  
Roger J Hajjar (roger.hajjar@mssm.edu)  
Malik Bissierier (malik.bissierier@mssm.edu)  
Yassine Sassi (yassine.sassi@mssm.edu)

**KEYWORDS**

pulmonary hypertension, surgical models, monocrotaline, Sugen, pneumonectomy, right heart failure, lung histology

**SUMMARY**

The rodent left pneumonectomy is a valuable technique in pulmonary hypertension research. Here, we present a protocol to describe the rat pneumonectomy procedure and postoperative care to ensure minimal morbidity and mortality.

**ABSTRACT**

In this protocol, we detail the correct procedural steps and necessary precautions to successfully perform a left pneumonectomy and induce PAH in rats with the additional administration of monocrotaline (MCT) or SU5416 (Sugen). We also compare these two models to other PAH models commonly used in research. In the last few years, the focus of animal PAH models has moved towards studying the mechanism of angioproliferation of plexiform lesions, in which the role of increased pulmonary blood flow is considered as an important trigger in the development of severe pulmonary vascular remodeling. One of the most promising rodent models of increased pulmonary flow is the unilateral left pneumonectomy combined with a “second hit” of MCT or Sugen. The removal of the left lung leads to increased and turbulent pulmonary blood flow and vascular remodeling. Currently, there is no detailed procedure of the pneumonectomy surgery in rats. This article details a step-by-step protocol of the pneumonectomy surgical procedure and post-operative care in male Sprague-Dawley rats. Briefly, the animal is anesthetized and the chest

is opened. Once the left pulmonary artery, pulmonary vein, and bronchus are visualized, they are ligated and the left lung is removed. The chest then closed and the animal recovered. Blood is forced to circulate only on the right lung. This increased vascular pressure leads to a progressive remodeling and occlusion of small pulmonary arteries. The second hit of MCT or Sugen is used one week post-surgery to induce endothelial dysfunction. The combination of increased blood flow in the lung and endothelial dysfunction produces severe PAH. The primary limitation of this procedure is that it requires general surgical skills.

## INTRODUCTION

Pulmonary arterial hypertension (PAH) is a progressive and fatal disease characterized by an increase in pulmonary blood flow, increased vascular resistance, inflammation, and remodeling of small pulmonary blood vessels<sup>1</sup>. This remodeling usually results in vascular lesions that obstruct and obliterate small pulmonary arteries, causing vasoconstriction and increasing right ventricle afterload<sup>2</sup>. Few successful pharmacological treatments of PAH exist; as a consequence, PAH-related mortality remains high. Recently, the focus of research on the pathobiology of pulmonary hypertension has moved towards a mechanism of angioproliferation in which the role of increased pulmonary blood flow is considered as an important trigger in the development of pulmonary vascular remodeling<sup>3,4</sup>.

Animal models of pulmonary hypertension have provided critical insights that help to explain the pathophysiology of the disease and have served as a platform for drug, cell, gene, and protein delivery. Traditionally, the chronic hypoxia-induced pulmonary hypertension model and the MCT lung injury model have been the main models used to study PAH pathophysiology<sup>5</sup>. However, they are not sufficient to produce increased pulmonary blood flow and neointimal pattern of remodeling compared to alterations described in human patients. The chronic-hypoxia model in rodents results in thickening of vessel walls with hypoxic vasoconstriction without angio-obliteration of small pulmonary vessels<sup>6</sup>. Additionally, the hypoxia condition is reversible. Thus, the hypoxia model is also not sufficient to produce severe PAH. The MCT lung injury model does elicit some endothelial dysfunction but the complex vascular obliterative lesions found in humans with severe primary PAH do not develop in the rats<sup>2</sup>. Additionally, MCT-treated rats tend to die from MCT-induced lung toxicity, veno-occlusive liver disease and myocarditis rather than from PAH<sup>2</sup>. Finally, the pneumonectomy alone is not sufficient to produce neointimal lesions in the small pulmonary vessels in a short period of time. After the pneumonectomy, there is minimal elevation in pulmonary arterial pressure<sup>7</sup>. In humans, the pneumonectomy is well tolerated when the contralateral lung is healthy<sup>7</sup>.

However, the left pneumonectomy procedure combined with MCT or Sugen is advantageous since it mimics increased pulmonary blood flow and results in pulmonary vascular remodeling comparable to severe clinical PAH. In the pneumonectomy-MCT model, neointimal pattern of remodeling develops in over 90% of operated-animals treated<sup>7</sup>. Similarly, the combination of Sugen and pneumonectomy results in severe PAH, characterized by angio-obliterative vascular lesions, proliferation, apoptosis, and RV dysfunction<sup>8</sup>. The left pneumonectomy procedure is also advantageous compared to other surgical procedures to induce PAH. Previously described models in rats to increase pulmonary blood flow to the lungs include the aorto-caval shunt or

subclavian-pulmonary artery anastomosis. These models are extremely complicated<sup>7,9-11</sup>. To perform an aorto-caval shunt, the animal's abdomen has to be opened. The shunt is placed in the abdominal aorta, which increases blood flow to all abdominal organs instead of just the lungs, thus, PAH takes much longer to develop. Additionally, it is difficult to determine the blood flow through the shunt, whereas with the pneumonectomy the blood flow to the remaining lung doubles. The subclavian-pulmonary artery anastomosis also has many complications. The flow of arterial blood into the vein can lead to thrombosis of anastomosis and bleeding. Like the aorto-caval shunt, it is difficult to determine the blood flow through the anastomosis. Furthermore, it is an expensive and difficult technique that requires vascular surgical skills. The unilateral left pneumonectomy doubles blood flow and shear stress in the contralateral lung and, in combination with MCT or Sugen, causes the typical hemodynamic and histopathological findings of PAH which is endothelial cell damage<sup>8,12</sup>.

The novelty of this manuscript is presented in the very detailed and comprehensive surgical protocol of the left pneumonectomy in rats and in the discussion of the technical and physiological challenges of these models. Because this protocol is not currently available, many investigators believe the model is too difficult use. Investigators who have performed the left pneumonectomy have faced high mortality and morbidity rates associated with the unnecessary loss of animals, compromising scientific assessment. Instead, many will use classical models such as MCT injection, chronic-hypoxia, or just the pneumonectomy to create PAH. However, these models are much less effective than the combination of MCT or Sugen with the left pneumonectomy. The primary purpose of this article is to provide the first detailed and reproducible surgical protocol for the left unilateral pneumonectomy in rats and provide the best surgical model of PAH. Combining this protocol for left unilateral pneumonectomy with MCT or SU5416 will allow investigators to create a far more effective and clinically relevant model of severe PAH to study the pathogenesis of this fatal disease.

## **PROTOCOL**

The procedures described below have been approved by the Institutional Animal Care and Use Committee (IACUC) of the Icahn School of Medicine at Mount Sinai. All rats received humane care in compliance with the Mount Sinai "Guide for the Care and Use of Laboratory Animals".

### **1. Preparation for Surgery**

1.1. Autoclave Cooley-Mayo curved scissors (large scissors), straight Iris scissors (small scissors), McPherson-Vannas Iris scissors (back scissors), Wangenstein tissue forceps (atraumatic forceps), Gerald tissue forceps, plain wire speculum (self-retaining retractor), small vessel cauterizer, gauze, double-ended probe, thin vascular needle holder, and Micro-Jacobson mosquito hemostatic forceps (mosquito).

### **2. Preparation and Intubation of Rats**

2.1. Administer a subcutaneous injection of buprenorphine analgesia (0.1 mg/kg) in 6-8-week old male, Sprague-Dawley rats, 30 min prior to surgery.

2.2. Place the rat individually in a chamber exposed to isoflurane 4% and oxygen (1 L/min) for 3-4 min until the rat is properly anesthetized (i.e., unconscious, breathing slowly, and unresponsive to touch or sound).

### 2.3. Intubation of Rats

2.3.1. Remove the rat from the chamber and tape the rat to a board so the rat lays flat on its back, with the mouth at the edge of the board. Use string to hold the rat by the two front teeth so that the neck remains flat/straight.

2.3.2. Place a fiber optic goose light source above the neck over the larynx, lift and hold the tongue with fingers, and move the epiglottis up to visualize the vocal cords. The trachea should be brightly lit behind the vocal cords; adjust the position of the light until the trachea is bright.

2.3.3. Intubate the rats by inserting a 16 G catheter into the larynx.

2.3.4. Confirm the intubation using a cold mirror to observe condensation of the humidity in the exhaled breath from the catheter. Make sure the animal is still breathing by the expansion of the chest.

2.4. Connect the rat to the ventilator. Set the oxygen to flow at 1 L/min. Set the ventilation rate to 70 breaths/min with a tidal volume of 0.35-0.45 mL. Set positive end expiratory pressure (PEEP) to 2-4 cm H<sub>2</sub>O. Reduce isoflurane to 2-3%.

2.5. Place the rat in the right decubitus position on a heating pad at 37 °C. Tape the front legs down. Shave the left thorax behind the front leg until the end of the rib cage with clippers. Clean the surgical area with gauze and 10% povidone-iodine solution, followed by 70% ethanol (three times).

2.6. Place the pulse oximeter on the rat's foot and monitor the heart rate and oxygen saturation throughout the surgery. Heart rate should be between 200-500 bpm and oxygen saturation should be >95%.

### 3. Preparation of Sterile Environment

3.1. Visualize the surgical area under the microscope. This must be done first because the microscope cannot be adjusted once the environment is sterile.

3.2. Place a sterile drape over the rat's body and on the instrument tray to create a sterile environment.

3.3. Put on sterile, surgical gloves. Do not touch anything besides the sterilized instruments, the surgical drapes, and the surgical area of the rat's body.

3.4. With sterile gloves, place sterile instruments on the sterile instrument tray.

#### 4. Left Pneumonectomy Surgical Procedure

4.1. Use Cooley-Mayo scissors and Gerald tissue forceps to cut a small hole in the surgical drape. The hole should be about 2-3 cm in diameter to fully visualize the incision but not too large so that only sterilized skin is exposed.

4.2. Make a 2 cm long lateral incision in the left thorax using a surgical blade. Use gauze and the electrocautery pen to manage bleeding/maintain hemostasis. Use the Cooley-Mayo scissors to cut each layer of tissue until the ribs and intercostal muscles are exposed.

#### 4.3. Entering Intercostal Space

4.3.1. Use the mosquito to make a hole through the muscle of the third intercostal space.

4.3.2. Use the double-ended probe to move the lung out of the way to visualize the pulmonary artery. The investigator may enter another intercostal space if the pulmonary artery is not accessible.

4.3.3. Use iris scissors and McPherson-Vannas iris scissors (back scissors) to open the intercostal muscles to about 1-2 cm. Use the electrocautery pen to stop any bleeding.

4.3.4. Place a small, self-retaining retractor to hold the ribs and muscles open.

4.4. Open only the left pleura and move the left lung down lower in the abdomen to allow access to the pulmonary artery and bronchus. Load a medium hemoclip into the ligating clip applicator.

#### 4.5. Ligation of the Left Main Bronchus and Left Main Pulmonary Artery

4.5.1. Lift the upper portion of the left lung carefully with the Wangenstein atraumatic forceps to expose the pulmonary artery.

4.5.2. Clip the pulmonary artery by closing the clip and applicator around the artery. Be careful not to close or rupture the left azygos vein. Do not clamp too forcefully otherwise, the vessel can rupture.

4.5.3. Open the incision further using the tonsil to separate the muscle fibers.

4.5.4. Load another medium hemoclip into the ligating clip applicator so that it is ready.

4.5.5. Use the atraumatic forceps to lift the lower portion of the lung out of the incision until

the left main bronchus and left pulmonary vein are visualized. Atraumatic forceps must be used pull to move the lung up and out of the incision. Since the lung is too large to be pulled out in one motion without tearing the tissue, the issue forceps are necessary to hold the lung in place while the atraumatic forceps are used carefully to pull more lung out.

4.5.6. Ligate the left main bronchus and left main pulmonary artery together by closing the applicator around them. Do not clamp the artery and bronchus too forcefully otherwise, the vessel can rupture.

4.6. Remove the lung with scissors. Be careful not to cut or tear out the clip. Use a small piece of sterile gauze to absorb any blood and make sure there is no bleeding.

#### 4.7. Closure of the Ribs and Intercostal Muscles

4.7.1. Once the bleeding has subsided, begin closure of the ribs and intercostal muscles with a 4-0 prolene suture. Hold the ends of the sutures closed with the mosquito.

4.7.2. Before tying the sutures closed, insert a 14 G catheter into the thoracic cavity away from the surgical incision and into the seventh intercostal space. Make sure the investigator can visualize the needle so as not to puncture any vital organs or vessels.

4.7.3. Immediately remove the needle, leaving the catheter in place. This will be used as a chest tube.

4.7.4. Place a 5-0 suture (**Table of Materials**) into the skin and around the chest tube so when the chest tube is removed, the hole will be tied shut.

4.7.5. Close the ribs together by tying the sutures.

4.7.6. Close the skin and subcutaneous space with a running 5-0 suture (**Table of Materials**).

4.8. Evacuate the air from the pleural cavity with a 3 mL syringe through the catheter to regain the negative normal pressure in the thorax. Immediately clamp the catheter with a needle holder to prevent air from going back into the thoracic cavity. Quickly remove the catheter and tie the suture to close the hole.

#### 5. Post-Operative Recovery

5.1. Place the animal in the sternal position. Turn off the isoflurane but continue giving the rat oxygen via endotracheal tube. Do not leave the animal unattended at any point until it has regained sufficient consciousness to ambulate and the animal is safely in its cage.

5.2. Administer 2-3 mL of sterile lactated Ringer's solution subcutaneously.



5.3. Monitor the heart rate ( $\approx 200$ -500 bpm), oxygen saturation ( $\geq 95\%$ ), and animal color to confirm the animal is breathing well.

5.4. When the animal starts making spontaneous breathing motions and neck movements and responds to physical stimuli (such as eyes widening, nose moving, and ears responding to sound), extubate the animal by pulling out the catheter and disconnect the ventilator.

5.5. Return the animal to an empty cage, away from the company of other animals. The animal should be alone for at least 3 days.

5.6. For pain control, administer 0.1 mg/kg of Buprenorphine subcutaneously every 12 h for 3 days.

## **6. Administration of "Second Hit" MCT or Sugan**

6.1. Administer 1 mL of MCT (60 mg/kg) or 1 mL of Sugan (25 mg/kg) via subcutaneous injection, 1 week after the surgery.

## **7. Terminal Harvest**

7.1. Place the animal in the chamber with flowing oxygen (1 L/min) and 4% isoflurane.

7.2. Connect the animal to the ventilator via nose cone. Keep oxygen flowing and lower the isoflurane to 2.5-3%. Lay the animal on his back and tape down all limbs.

7.3. Shave the animal along the entire abdomen.

### **7.4. Opening the Chest**

7.4.1. Make an incision down the abdomen with a scalpel from the subclavian notch to the xyphoid.

7.4.2. Use the tissue forceps to hold the xyphoid. Cut through the sternum with the Cooley-Mayo scissors until the heart and pulmonary artery are fully accessible. Use the electrocautery to stop the bleeding. Hold the ribs open with a retractor.

7.5. Identify the pulmonary artery. Adjust the orientation of the heart, if necessary, by adding gauze underneath. Use a 20 G IV catheter to puncture the pulmonary artery between the pulmonary valve and the bifurcation of the main pulmonary artery. Advance only the 20 G catheter into the artery and remove the needle. Advance the 1.2 Fr transonic pressure catheter into IV catheter that is in the pulmonary artery. Once the PA curve is steady, record the pressure for at least 10 s. Repeat these steps to record the pressure in the right ventricle.

7.6. Remove the heart and lungs. Place pieces of the lung in formalin to be fixed in paraffin and stained with hematoxylin and eosin.

## REPRESENTATIVE RESULTS

According to the accepted classification system, pulmonary hypertension is characterized by a mean pulmonary artery pressure (mPAP) exceeding the upper limits of normal pulmonary artery pressure (i.e., 25 mm Hg). In the pneumonectomy + MCT group, severe PAH developed by day 21 with an increased mPAP (**Figure 1**). The mPAP is calculated by the formula:

$$\frac{PA_{\text{systolic pressure}} + 2PA_{\text{diastolic pressure}}}{3}$$

Systolic and diastolic RV and PA pressures and were measured with the pressure catheter in the main pulmonary artery connected to the ADVantage PV system. The mean pulmonary arterial pressures (mPAP) was calculated using the formula above. In the control group, the mean PA pressure was  $18.6 \pm 1.76$  mm Hg (**Figure 1**). In the pneumonectomy + MCT group, the mPAP increased 2.25 times more compared to the control group ( $41.9 \pm 2.89$  mm Hg) (**Figure 1**). In the pneumonectomy + Sugen group, the mPAP was three times higher than in the control group ( $53 \pm 6.60$  mm Hg). In both the MCT and Sugen groups, the RVSP was much higher compared to the control group (**Figure 1**).

Histopathology of rat lung tissue was performed using hematoxylin and eosin staining followed by imaging with an optical light microscope. In the normal lung, there is space between the alveoli and the alveolar structures are apparent. The vessels are clear and of normal thickness (**Figure 2A**). In the PAH lung, there is evidence of remodeling, thickening of vessel walls, severe constriction of vessels, inflammation and focal pulmonary arteritis (**Figure 2B, C**).

## FIGURE LEGENDS:

**Figure 1: Severe pulmonary arterial hypertension in the left pneumonectomy combined with MCT model.** Significant differences in mPAP and RVSP between the control group and pneumonectomy + MCT group and the control group and pneumonectomy + Sugen group. Data are presented as mean  $\pm$  SEM. The p-values were calculated using a one-way ANOVA and Tukey post hoc test.

**Figure 2. Representative photomicrographs of H&E staining of lung tissue. (A)** Normal lung tissue. In the normal rat lung, the arteries (red arrow) are open and the vessel walls are normal sized. **(B)** Pathological vascular remodeling in pulmonary arterial hypertension rats treated with pneumonectomy and MCT. The lung shows focal pulmonary arteritis and inflammation, concentric medial thickening of the vessel walls (white arrow), and concentric intimal thickening of vessel walls (black arrow), resulting in severely constricted vessels. **(C)** Pathological vascular remodeling in PAH rats treated with pneumonectomy and Sugen. These lungs also show focal pulmonary arteritis and inflammation, concentric medial thickening of vessel walls (white arrow), and concentric intimal thickening of vessel walls (black arrow). The lumens of these vessels are severely constricted and/or entirely closed.

## DISCUSSION

In PAH-affected lungs, vascular proliferation with neointimal formation and obliteration of the pulmonary arteries result in severe hemodynamic changes, right ventricular failure and early mortality<sup>7,8</sup>. The changes to the vessel walls increase resistance to blood flow, increasing arterial and right ventricular pressure. In the early stages of PAH, usually 3 weeks after administering MCT or Sugen, rats developed nonspecific histological changes like medial hypertrophy, adventitial thickening, and muscularization of the small arteries and arterioles. These changes are potentially reversible. In the later stages, about 6-8 weeks after administering MCT or Sugen, the rat's lungs have neointimal and plexiform vasculopathy that obstruct and obliterate medium and small pulmonary arteries and arterioles, cellular intimal proliferation, and concentric intimal fibrosis. Plexiform lesions usually consist of a plexus of channels lined by endothelial cells and myofibroblasts. In many cases, these changes are associated with interstitial edema and fibrosis, thromboembolic obstruction of distal small pulmonary arteries, partial recanalization of a thrombosed muscular vessels, and fibrinoid necrosis<sup>12</sup>.

As stated previously, rats in other PAH models do not develop vascular obliteration of the small vessels, neointimal and plexiform lesions, and high PA and RV pressures. Treatment with the chronic-hypoxia PAH model was found to produce some thickening of vessels but the vessels remain open and there are no vascular obliterative lesions and little inflammation<sup>5</sup>. RVSP and mPAP values are slightly elevated compared to control<sup>5</sup>. Similarly, treatment with either MCT or pneumonectomy resulted in pulmonary arterial pressures that were not significantly higher than control rats and slightly remodeled vessels<sup>7,9</sup>.

Conversely, we found that the left pneumonectomy combined with MCT or Sugen is an effective model to create severe PAH. Compared to the control group, the mean pulmonary arterial pressure (mPAP) and the right ventricular systolic pressure (RVSP) in rats with severe PAH nearly doubled (**Figure 1**). Additionally, these rats developed plexiform lesions, concentric medial and intimal thickening, thromboembolic obstruction of distal small pulmonary arteries, inflammation, and very elevated pulmonary artery and right ventricular pressures (**Figure 2**). Compared to the chronic-hypoxia, MCT injection, and pneumonectomy only models of PAH performed in other studies, the pneumonectomy combined with MCT or Sugen model creates a clinically relevant condition. Furthermore, this model, if performed correctly, only has a 5-10% mortality rate.

In order to successfully perform the left pneumonectomy and create PAH, there are several critical steps in this protocol that must be completed. First, it is very important to monitor the animal's oxygen saturation, capnography, and counting heart rate throughout the entire procedure to ensure the animal is breathing and his heart is beating. Monitoring oxygen saturation further confirms proper endotracheal intubation. Intubating the animal is absolutely necessary for this procedure. When the animal's chest cavity is opened, the negative pressure that normally exists in the thoracic cavity is shifted to atmospheric positive pressure. Thus, rats need to be provided with positive pressure via artificial ventilation. Without proper intubation, the animal's lungs will collapse from the positive atmospheric pressure.

The surgical incision has to be made laterally or posterolaterally and in the third intercostal space. Depending on the rat's anatomy, the surgeon may have to open a different intercostal space in order to access the lung and visualize the vessels. Using other approaches will make it very difficult to reach the left pulmonary artery. When opening the chest cavity, it is very important to use an electrocautery pen to stop bleeding from the skin, muscles, and surrounding vessels. If the investigator skips this step, the animal will lose blood and less oxygen will circulate. The incision must be a minimum of 2 cm long so that there is enough space to take out the entire lung when ligating. Otherwise, the investigator will tear the tissue when trying to remove the lung from a small opening. It is also essential to use atraumatic forceps when moving the lung in order to avoid rupturing the tissue and hemorrhaging. The pulmonary artery is closed first to prevent bleeding from manipulation of the lungs. The investigator should be very careful when ligating the vessels to avoid closing the left azygos vein or tearing the vessels otherwise, the animal will die. Additionally, it is much easier for the surgeon to use titanium hemoclips rather than sutures to ligate the left pulmonary artery, left main bronchus, and left pulmonary veins with a suture. Because the investigator has to make a relatively long incision in the intercostal space, it is necessary to close the intercostal muscles and ribs with sutures. Once the chest is closed, air has to be evacuated from the chest to restore negative pressure and it is important to prevent contralateral lung and heart distortion with a closed pneumothorax.

Finally, recovery is one of the most critical steps after the rat pneumonectomy. A thoracotomy is considered a very painful surgery and analgesics are essential to promote adequate ventilation, improve lung excursions in the post-operative period, and reduce pain. Rats should be recovered in sternal position to maximize lung inflation. After 10 min, the investigator can decrease the ventilation rate to help stimulate the animal to breathe on its own and wake up. If the animal becomes cyanotic and oxygen saturation levels decrease, it is necessary to increase the oxygen, ventilation rate, and increase tidal volume to 5 mL or more depending on the capacity of the ventilator. Extubation of the rats should be done as late as possible, once the animal is fully awake. The investigator may put the extubated rat into a chamber with just flowing oxygen to further aid recovery.

If the technique is executed correctly and the aforementioned considerations are addressed, performing a left unilateral pneumonectomy combined with MCT or Sugen creates a reliable model of severe PAH than MCT alone, hypoxia or other methods. When the pneumonectomy is performed correctly, the animal survives, the procedure has a short duration (15-30 min), and the investigator does not need specific vascular surgical skills. Furthermore, the investigator is able to successfully create PAH. The limitations of this method are that a thoracotomy is an invasive procedure, endotracheal intubation is required, and the investigator does need some general surgical skills. The neointimal pulmonary vascular occlusive lesions and the pronounced increases in pulmonary artery pressure similar to human pulmonary hypertension patients are evident in rats after the combination of pneumonectomy with MCT or SU5416 injection<sup>7-9</sup>. The present model is a reliable method to study the role of pulmonary overflow in the contralateral lung and flow-induced pulmonary hypertension.

This protocol may be useful for studying other diseases. It is possible to use this model to study the compensatory growth of pulmonary tissue in the contralateral lung. This technique can also be used to study and develop treatments for right ventricular failure (RVF). Severe right ventricle hypertrophy develops in animals that develop neointimal lesions from increased arterial pressure<sup>7</sup>. RVF causes death in about 70% of patients with PAH<sup>13</sup>. Increasing pulmonary blood flow can be useful for studying and developing treatments for patients who suffer from congenital cardiac diseases as well.

## DISCLOSURES

The authors have no potential conflicts of interest.

## ACKNOWLEDGEMENTS

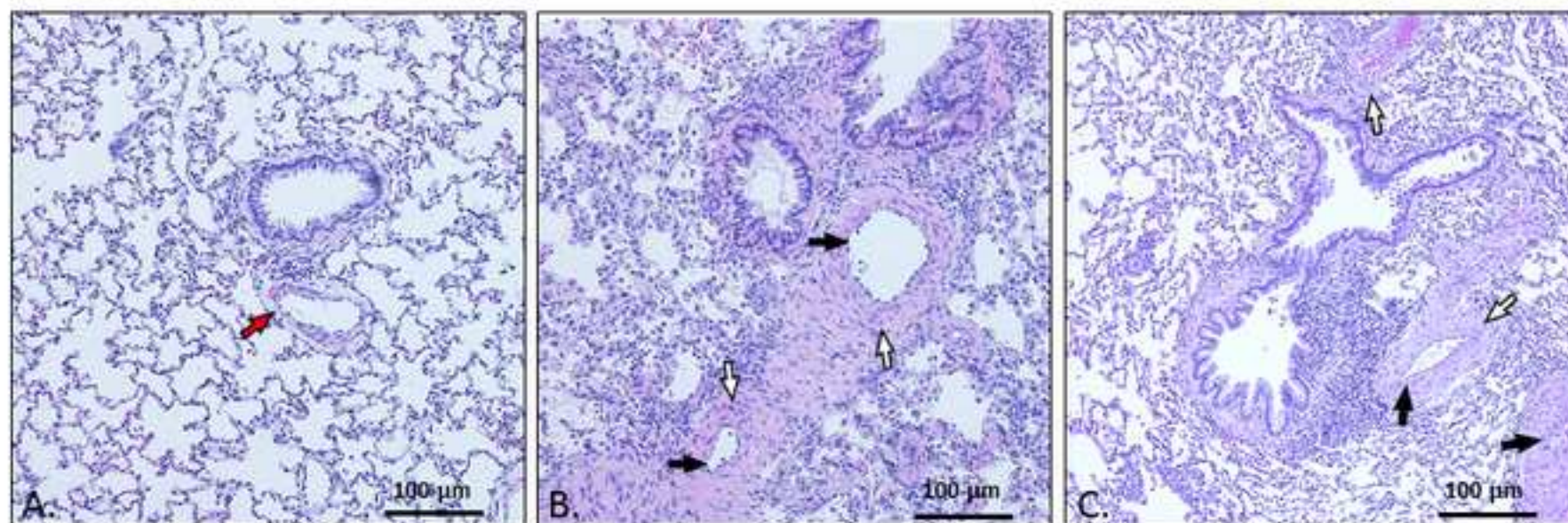
This manuscript was supported by NIH grant 7R01 HL083078-10 grants from the American Heart Association AHA-17SDG33370112 and from the National Institutes of Health NIH K01 HL135474 to Y.S. and from the National Institutes of Health R01 HL133554 to L.H.

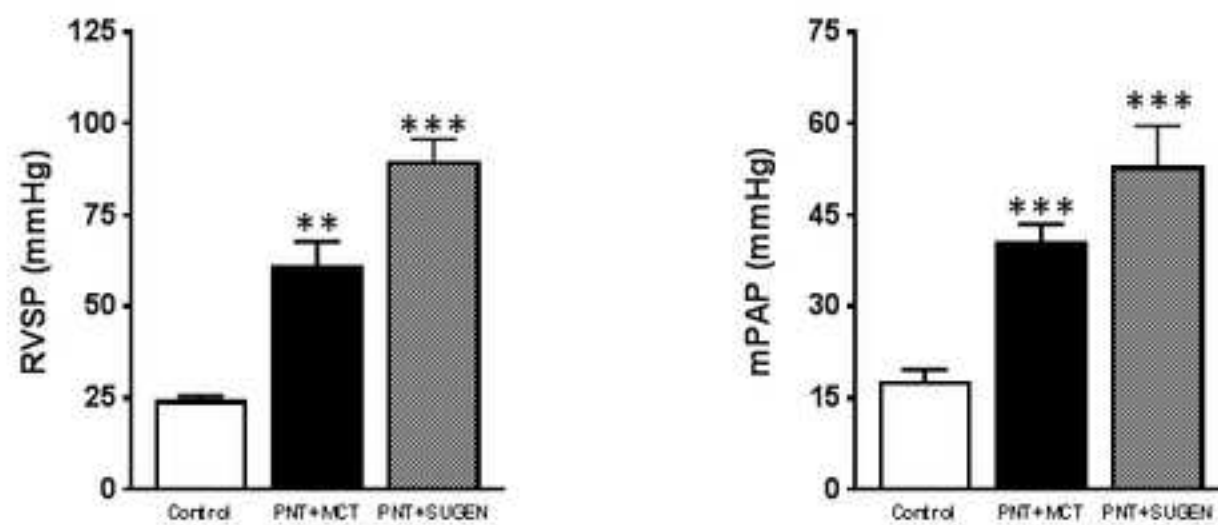
## REFERENCES:

- 1 Leopold, J. & Maron, B. Molecular Mechanisms of Pulmonary Vascular Remodeling in Pulmonary Arterial Hypertension. *International Journal of Molecular Sciences*. **17** (5), 761, (2016).
- 2 Gomez-Arroyo, J. G. et al. The monocrotaline model of pulmonary hypertension in perspective. *American Journal of Physiology-Lung Cellular and Molecular Physiology*. **302** (4), L363-L369, (2012).
- 3 van Albada, M. E. et al. The role of increased pulmonary blood flow in pulmonary arterial hypertension. *European Respiratory Journal*. **26** (3), 487-493, (2005).
- 4 Dickinson, M. G., Bartelds, B., Borgdorff, M. A. J. & Berger, R. M. F. The role of disturbed blood flow in the development of pulmonary arterial hypertension: lessons from preclinical animal models. *American Journal of Physiology-Lung Cellular and Molecular Physiology*. **305** (1), L1-L14, (2013).
- 5 Stenmark, K. R., Meyrick, B., Galie, N., Mooi, W. J. & McMurtry, I. F. Animal models of pulmonary arterial hypertension: the hope for etiological discovery and pharmacological cure. *American Journal of Physiology-Lung Cellular and Molecular Physiology*. **297** (6), L1013-L1032, (2009).
- 6 Cahill, E. et al. The pathophysiological basis of chronic hypoxic pulmonary hypertension in the mouse: vasoconstrictor and structural mechanisms contribute equally. *Experimental Physiology*. **97** (6), 796-806, (2012).
- 7 Okada, K. et al. Pulmonary hemodynamics modify the rat pulmonary artery response to injury. A neointimal model of pulmonary hypertension. *American Journal of Pathology*. **151** (4), 1019-1025, (1997).
- 8 Happé, C. M. et al. Pneumonectomy combined with SU5416 induces severe pulmonary hypertension in rats. *American Journal of Physiology-Lung Cellular and Molecular Physiology*. **310** (11), L1088-L1097, (2016).
- 9 Tanaka, Y., Schuster, D. P., Davis, E. C., Patterson, G. A. & Botney, M. D. The role of vascular injury and hemodynamics in rat pulmonary artery remodeling. *Journal of Clinical Investigation*. **98** (2), 434-442, (1996).

- 10 Nishimura, T., Faul, J. L., Berry, G. J., Kao, P. N. & Pearl, R. G. Effect of a surgical aortocaval  
fistula on monocrotaline-induced pulmonary hypertension. *Critical Care Medicine*. **31** (4), 1213-  
1218, (2003).
- 11 Linardi, D. et al. Ventricular and pulmonary vascular remodeling induced by pulmonary  
overflow in a chronic model of pretricuspid shunt. *Journal of Thoracic and Cardiovascular Surgery*.  
**148** (6), 2609-2617, (2014).
- 12 White, R. J. et al. Plexiform-like lesions and increased tissue factor expression in a rat  
model of severe pulmonary arterial hypertension. *American Journal of Physiology-Lung Cellular  
and Molecular Physiology*. **293** (3), L583-L590, (2007).
- 13 Samson, N. & Paulin, R. Epigenetics, inflammation and metabolism in right heart failure  
associated with pulmonary hypertension. *Pulmonary Circulation*. **7** (3), 572-587, (2017).









Name of Material/ Equipment	Company	Catalog Number	Comments/Description
Surgical Blade	Bard-Parker	371215	Incision
Forane (Isoflurane, USP)	Baxter	NDC 10019-360-40	anesthesia
BD Angiocath 14 G	BD	382268	chest tube
BD Angiocath 16 G	BD	381157	intubation tube
BD 1 mL Insulin Syringe	BD	329652	administer buprinex post-operatively
Biogel Surgeons Surgical Gloves	Biogel	30460-01	sterile surgical gloves
Wahl BravMini+ Trimmer	Braintree Scientific	CLP-41590 P	shave surgical site
SU5416	Cayman Chemical	13342	Sugen
Fiber Optic Illuminator	Cole-Parmer	EW-41723-02	light for intubation
Surgipro II 4-0 Suture	Covidien	VP831X	Closing intercostal muscles
Polysorb 5-0 Suture	Covidien	GL-885	Closing skin
Medium Slide Top Induction Chamber	DRE Veterinary	12570	oxygen & isoflurane delivery
DRE Compact 150 Rodent Anesthesia Machine	DRE Veterinary	373	oxygen & isoflurane delivery
Small Vessel Cauterizer Kit	Fine Science Tools	18000-00	cauterizer to minimize bleeding
VentElite Small Animal Ventilator	Harvard Apparatus	55-7040	ventilator
MouseSTAT Jr	Kent Scientific	MSTAT-JR	pulse oximeter & heart rate monitor
Mouse Paw Pulse Oximeter Sensor	Kent Scientific	SPO2-MSE	pulse oximeter & heart rate paw sensor
PhysioSuite RightTemp	Kent Scientific	PS-02	temperature pad
PVP Prep Solution	Medline	MDS093944	Cleaning surgical site
Poly-lined Drape	Medline	NON21002Z	cover animal

3 mL syringe	Medline	SYR103010	administer fluids post-operatively
Microsurgical Kits, Integra	Miltex	95042-540	surgical tools: plain wire speculum, double-ended probe, McPherson- Vannas Iris scissors straight, straight iris scissors
Hemostatic forceps - Micro- Jacobson-Mosquito	Miltex	17-2602	mosquito
Buprenorphine HCl 0.3 mg/mL	Par Pharmaceutical	NDC 42023-179-01	Pain relief
Cooley-Mayo curved scissors	Pilling	352090	Large scissors
Gerald Tissue forceps	Pilling	351900	forceps
Wangesnsteen Tissue Forceps	Pilling	342929	atraumatic forceps
Pilling Thin Vascular Needle Holder	Pilling	354962DG	needle holder
Crotaline	Sigma-Aldrich	C2401-1G	MCT
Surflash 20 G IV Catheter	Terumo	SR*FF2051	For pressure reading during organ harvest
ADVantage PV System with 1.2 Fr Catheter	Transonic Inc	ADV500	Record pulmonary artery and right ventricle pressure
Medium Hemoclip	Weck	523700	ligate vessels
Open Ligating Clip Applicator; Medium, curved	Weck Horizon	237081	hemoclip applicator
Surgical Microscope	Zeiss OPMI MD	1808	magnification

## ARTICLE AND VIDEO LICENSE AGREEMENT

Title of Article:	The Left Pneumonectomy combined with Monocrotaline or Sugen as a Model of Pulmonary Hypertension in Rats
Author(s):	Lahouaria Hadri, Michael G. Katz

Item 1: The Author elects to have the Materials be made available (as described at <http://www.jove.com/publish>) via:



Standard Access



Open Access

Item 2: Please select one of the following items:



The Author is **NOT** a United States government employee.



The Author is a United States government employee and the Materials were prepared in the course of his or her duties as a United States government employee.



The Author is a United States government employee but the Materials were NOT prepared in the course of his or her duties as a United States government employee.

### ARTICLE AND VIDEO LICENSE AGREEMENT

1. **Defined Terms.** As used in this Article and Video License Agreement, the following terms shall have the following meanings: **"Agreement"** means this Article and Video License Agreement; **"Article"** means the article specified on the last page of this Agreement, including any associated materials such as texts, figures, tables, artwork, abstracts, or summaries contained therein; **"Author"** means the author who is a signatory to this Agreement; **"Collective Work"** means a work, such as a periodical issue, anthology or encyclopedia, in which the Materials in their entirety in unmodified form, along with a number of other contributions, constituting separate and independent works in themselves, are assembled into a collective whole; **"CRC License"** means the Creative Commons Attribution-Non Commercial-No Derivs 3.0 Unported Agreement, the terms and conditions of which can be found at: <http://creativecommons.org/licenses/by-nc-nd/3.0/legalcode>; **"Derivative Work"** means a work based upon the Materials or upon the Materials and other pre-existing works, such as a translation, musical arrangement, dramatization, fictionalization, motion picture version, sound recording, art reproduction, abridgment, condensation, or any other form in which the Materials may be recast, transformed, or adapted; **"Institution"** means the institution, listed on the last page of this Agreement, by which the Author was employed at the time of the creation of the Materials; **"JoVE"** means MyJoVE Corporation, a Massachusetts corporation and the publisher of The Journal of Visualized Experiments; **"Materials"** means the Article and / or the Video; **"Parties"** means the Author and JoVE; **"Video"** means any video(s) made by the Author, alone or in conjunction with any other parties, or by JoVE or its affiliates or agents, individually or in collaboration with the Author or any other parties, incorporating all or any portion

of the Article, and in which the Author may or may not appear.

2. **Background.** The Author, who is the author of the Article, in order to ensure the dissemination and protection of the Article, desires to have the JoVE publish the Article and create and transmit videos based on the Article. In furtherance of such goals, the Parties desire to memorialize in this Agreement the respective rights of each Party in and to the Article and the Video.

3. **Grant of Rights in Article.** In consideration of JoVE agreeing to publish the Article, the Author hereby grants to JoVE, subject to **Sections 4** and **7** below, the exclusive, royalty-free, perpetual (for the full term of copyright in the Article, including any extensions thereto) license (a) to publish, reproduce, distribute, display and store the Article in all forms, formats and media whether now known or hereafter developed (including without limitation in print, digital and electronic form) throughout the world, (b) to translate the Article into other languages, create adaptations, summaries or extracts of the Article or other Derivative Works (including, without limitation, the Video) or Collective Works based on all or any portion of the Article and exercise all of the rights set forth in (a) above in such translations, adaptations, summaries, extracts, Derivative Works or Collective Works and (c) to license others to do any or all of the above. The foregoing rights may be exercised in all media and formats, whether now known or hereafter devised, and include the right to make such modifications as are technically necessary to exercise the rights in other media and formats. If the "Open Access" box has been checked in **Item 1** above, JoVE and the Author hereby grant to the public all such rights in the Article as provided in, but subject to all limitations and requirements set forth in, the CRC License.

## ARTICLE AND VIDEO LICENSE AGREEMENT

4. **Retention of Rights in Article.** Notwithstanding the exclusive license granted to JoVE in **Section 3** above, the Author shall, with respect to the Article, retain the non-exclusive right to use all or part of the Article for the non-commercial purpose of giving lectures, presentations or teaching classes, and to post a copy of the Article on the Institution's website or the Author's personal website, in each case provided that a link to the Article on the JoVE website is provided and notice of JoVE's copyright in the Article is included. All non-copyright intellectual property rights in and to the Article, such as patent rights, shall remain with the Author.

5. **Grant of Rights in Video – Standard Access.** This **Section 5** applies if the "Standard Access" box has been checked in **Item 1** above or if no box has been checked in **Item 1** above. In consideration of JoVE agreeing to produce, display or otherwise assist with the Video, the Author hereby acknowledges and agrees that, Subject to **Section 7** below, JoVE is and shall be the sole and exclusive owner of all rights of any nature, including, without limitation, all copyrights, in and to the Video. To the extent that, by law, the Author is deemed, now or at any time in the future, to have any rights of any nature in or to the Video, the Author hereby disclaims all such rights and transfers all such rights to JoVE.

6. **Grant of Rights in Video – Open Access.** This **Section 6** applies only if the "Open Access" box has been checked in **Item 1** above. In consideration of JoVE agreeing to produce, display or otherwise assist with the Video, the Author hereby grants to JoVE, subject to **Section 7** below, the exclusive, royalty-free, perpetual (for the full term of copyright in the Article, including any extensions thereto) license (a) to publish, reproduce, distribute, display and store the Video in all forms, formats and media whether now known or hereafter developed (including without limitation in print, digital and electronic form) throughout the world, (b) to translate the Video into other languages, create adaptations, summaries or extracts of the Video or other Derivative Works or Collective Works based on all or any portion of the Video and exercise all of the rights set forth in (a) above in such translations, adaptations, summaries, extracts, Derivative Works or Collective Works and (c) to license others to do any or all of the above. The foregoing rights may be exercised in all media and formats, whether now known or hereafter devised, and include the right to make such modifications as are technically necessary to exercise the rights in other media and formats. For any Video to which this **Section 6** is applicable, JoVE and the Author hereby grant to the public all such rights in the Video as provided in, but subject to all limitations and requirements set forth in, the CRC License.

7. **Government Employees.** If the Author is a United States government employee and the Article was prepared in the course of his or her duties as a United States government employee, as indicated in **Item 2** above, and any of the licenses or grants granted by the Author hereunder exceed the scope of the 17 U.S.C. 403, then the rights granted hereunder shall be limited to the maximum

rights permitted under such statute. In such case, all provisions contained herein that are not in conflict with such statute shall remain in full force and effect, and all provisions contained herein that do so conflict shall be deemed to be amended so as to provide to JoVE the maximum rights permissible within such statute.

8. **Protection of the Work.** The Author(s) authorize JoVE to take steps in the Author(s) name and on their behalf if JoVE believes some third party could be infringing or might infringe the copyright of either the Author's Article and/or Video.

9. **Likeness, Privacy, Personality.** The Author hereby grants JoVE the right to use the Author's name, voice, likeness, picture, photograph, image, biography and performance in any way, commercial or otherwise, in connection with the Materials and the sale, promotion and distribution thereof. The Author hereby waives any and all rights he or she may have, relating to his or her appearance in the Video or otherwise relating to the Materials, under all applicable privacy, likeness, personality or similar laws.

10. **Author Warranties.** The Author represents and warrants that the Article is original, that it has not been published, that the copyright interest is owned by the Author (or, if more than one author is listed at the beginning of this Agreement, by such authors collectively) and has not been assigned, licensed, or otherwise transferred to any other party. The Author represents and warrants that the author(s) listed at the top of this Agreement are the only authors of the Materials. If more than one author is listed at the top of this Agreement and if any such author has not entered into a separate Article and Video License Agreement with JoVE relating to the Materials, the Author represents and warrants that the Author has been authorized by each of the other such authors to execute this Agreement on his or her behalf and to bind him or her with respect to the terms of this Agreement as if each of them had been a party hereto as an Author. The Author warrants that the use, reproduction, distribution, public or private performance or display, and/or modification of all or any portion of the Materials does not and will not violate, infringe and/or misappropriate the patent, trademark, intellectual property or other rights of any third party. The Author represents and warrants that it has and will continue to comply with all government, institutional and other regulations, including, without limitation all institutional, laboratory, hospital, ethical, human and animal treatment, privacy, and all other rules, regulations, laws, procedures or guidelines, applicable to the Materials, and that all research involving human and animal subjects has been approved by the Author's relevant institutional review board.

11. **JoVE Discretion.** If the Author requests the assistance of JoVE in producing the Video in the Author's facility, the Author shall ensure that the presence of JoVE employees, agents or independent contractors is in accordance with the relevant regulations of the Author's institution. If more than one author is listed at the beginning of this Agreement, JoVE may, in its sole

## ARTICLE AND VIDEO LICENSE AGREEMENT

discretion, elect not take any action with respect to the Article until such time as it has received complete, executed Article and Video License Agreements from each such author. JoVE reserves the right, in its absolute and sole discretion and without giving any reason therefore, to accept or decline any work submitted to JoVE. JoVE and its employees, agents and independent contractors shall have full, unfettered access to the facilities of the Author or of the Author's institution as necessary to make the Video, whether actually published or not. JoVE has sole discretion as to the method of making and publishing the Materials, including, without limitation, to all decisions regarding editing, lighting, filming, timing of publication, if any, length, quality, content and the like.

12. **Indemnification.** The Author agrees to indemnify JoVE and/or its successors and assigns from and against any and all claims, costs, and expenses, including attorney's fees, arising out of any breach of any warranty or other representations contained herein. The Author further agrees to indemnify and hold harmless JoVE from and against any and all claims, costs, and expenses, including attorney's fees, resulting from the breach by the Author of any representation or warranty contained herein or from allegations or instances of violation of intellectual property rights, damage to the Author's or the Author's institution's facilities, fraud, libel, defamation, research, equipment, experiments, property damage, personal injury, violations of institutional, laboratory, hospital, ethical, human and animal treatment, privacy or other rules, regulations, laws, procedures or guidelines, liabilities and other losses or damages related in any way to the submission of work to JoVE, making of videos by JoVE, or publication in JoVE or elsewhere by JoVE. The Author shall be responsible for, and shall hold JoVE harmless from, damages caused by lack of sterilization, lack of cleanliness or by contamination due to

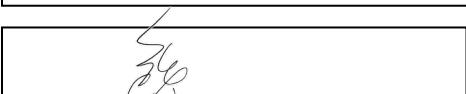
the making of a video by JoVE its employees, agents or independent contractors. All sterilization, cleanliness or decontamination procedures shall be solely the responsibility of the Author and shall be undertaken at the Author's expense. All indemnifications provided herein shall include JoVE's attorney's fees and costs related to said losses or damages. Such indemnification and holding harmless shall include such losses or damages incurred by, or in connection with, acts or omissions of JoVE, its employees, agents or independent contractors.

13. **Fees.** To cover the cost incurred for publication, JoVE must receive payment before production and publication of the Materials. Payment is due in 21 days of invoice. Should the Materials not be published due to an editorial or production decision, these funds will be returned to the Author. Withdrawal by the Author of any submitted Materials after final peer review approval will result in a US\$1,200 fee to cover pre-production expenses incurred by JoVE. If payment is not received by the completion of filming, production and publication of the Materials will be suspended until payment is received.

14. **Transfer, Governing Law.** This Agreement may be assigned by JoVE and shall inure to the benefits of any of JoVE's successors and assignees. This Agreement shall be governed and construed by the internal laws of the Commonwealth of Massachusetts without giving effect to any conflict of law provision thereunder. This Agreement may be executed in counterparts, each of which shall be deemed an original, but all of which together shall be deemed to be one and the same agreement. A signed copy of this Agreement delivered by facsimile, e-mail or other means of electronic transmission shall be deemed to have the same legal effect as delivery of an original signed copy of this Agreement.

A signed copy of this document must be sent with all new submissions. Only one Agreement is required per submission.

### CORRESPONDING AUTHOR/FIRST AUTHOR

Name:	Michael G. Katz	
Department:	Cardiology	
Institution:	Icahn School of Medicine at Mount Sinai	
Title:	Assistant Professor	
Signature:		Date: 9/4/2018

Please submit a **signed** and **dated** copy of this license by one of the following three methods:

1. Upload an electronic version on the JoVE submission site
2. Fax the document to +1.866.381.2236
3. Mail the document to JoVE / Attn: JoVE Editorial / 1 Alewife Center #200 / Cambridge, MA 02140

***Manuscript ID: JoVE59050 “The Left Pneumonectomy combined with Monocrotaline or Sugen as a Model of Pulmonary Hypertension in Rats”***

**Dear Dr. Wu**

We thank you for the careful review of our manuscript. We appreciate the feedback and have attempted to address all of the raised comments. Detailed responses to the comments can be found below. We hope that you will find our revised manuscript to be improved and to be acceptable for publication in *JOVE*.

Sincerely yours,

Lahouaria Hadri

**Response to Editorial Comments:**

**Editorial comments:**

1. Please take this opportunity to thoroughly proofread the manuscript to ensure that there are no spelling or grammar issues.

**Response: We reviewed the manuscript and corrected spelling and grammar issues accordingly.**

2. The highlighted protocol steps are over the 2.75 page limit. Please highlight fewer steps for filming.

**Response: We highlighted fewer steps, removing post-operative recovery steps and some of step 2 (preparation of animal).**

3. Please mention how proper anesthetization is confirmed.

**Response: In step 2.2 of the protocol, we clarified that the rat is properly anesthetized after 3-4 minutes when he is unconscious, breathing slowly, and unresponsive to touch or sound.**

4. Please specify the use of vet ointment on eyes to prevent dryness while under anesthesia.

**Response: We did not add the use of vet ointment on eyes to prevent dryness**

5. Discuss maintenance of sterile conditions during survival surgery.

**Response: In steps 3.2-3.4, we amended the protocol to include maintenance of the sterile conditions during survival surgery.**

6. Please specify that the animal is not left unattended until it has regained sufficient consciousness to maintain sternal recumbency.

**Response: In step 5.1 of the protocol, we specified that the animal should not be left unattended until the animal can properly ambulate is safely in the cage.**

7. Please specify that the animal that has undergone surgery is not returned to the company of other animals until fully recovered.

**Response: In step 5.5 of the protocol, we added that the animal should be kept in a cage, alone, away from other animals for at least 3 days.**

8. Please do not highlight any steps describing euthanasia or anesthesia.

**Response: We specifically removed highlighting from any steps that described either euthanasia or anesthesia (see protocol).**

9. Please use standard SI unit symbols and prefixes such as  $\mu\text{L}$ , mL, L, g, m, etc., and h, min, s for time units.

**Response: We went through the manuscript and amended any units that were not standard SI units, if it was possible. We kept units such as bpm, mm Hg, G**

**(gauge), Fr (French), etc for lack of appropriate SI comparables.**

10. Step 4.1.1: Please write this step in imperative tense.

**Response: We combined step 4.1.1. with step 4.1. to correct the passive tense.**