

Journal of Visualized Experiments

In Vitro Assays to Evaluate the Migration, Invasion, and Proliferation of Immortalized Human First-Trimester Trophoblast Cell Lines --Manuscript Draft--

Article Type:	Invited Methods Article - JoVE Produced Video
Manuscript Number:	JoVE58942R1
Full Title:	In Vitro Assays to Evaluate the Migration, Invasion, and Proliferation of Immortalized Human First-Trimester Trophoblast Cell Lines
Keywords:	Trophoblast; cell invasion; cell migration; Cell Proliferation; transwell assay; scratch assay; time-lapse microscopy
Corresponding Author:	Shannon Whirledge Yale University School of Medicine New Haven, CT UNITED STATES
Corresponding Author's Institution:	Yale University School of Medicine
Corresponding Author E-Mail:	shannon.whirledge@yale.edu
Order of Authors:	Edwina P. Kisanga Zhonghua Tang Seth Guller Shannon Whirledge
Additional Information:	
Question	Response
Please indicate whether this article will be Standard Access or Open Access.	Standard Access (US\$2,400)
Please indicate the city, state/province, and country where this article will be filmed . Please do not use abbreviations.	06520

TITLE:

In Vitro Assays to Evaluate the Migration, Invasion, and Proliferation of Immortalized Human First-Trimester Trophoblast Cell Lines

AUTHORS AND AFFILIATIONS:

Edwina P. Kisanga¹, Zhonghua Tang¹, Seth Guller¹, Shannon Whirledge¹

¹Department of Obstetrics, Gynecology and Reproductive Sciences, Yale School of Medicine, New Haven, CT, USA

Corresponding Author:

Shannon Whirledge (shannon.whirledge@yale.edu)

Email Addresses of Co-authors:

Edwina P. Kisanga (edwina.kisanga@yale.edu)

Zhonghua Tang (zhonghua.tang@yale.edu)

Seth Guller (seth.guller@yale.edu)

KEYWORDS:

trophoblast, cell invasion, cell migration, cell proliferation, transwell assay, scratch assay, time-lapse microscopy

SUMMARY:

Here, we present a highly accessible protocol for evaluating the cell movement in human trophoblast cells using three in vitro assays: the scratch assay, the transwell invasion assay, and the cell proliferation assay.

ABSTRACT:

Cell movement is a critical property of trophoblasts during placental development and early pregnancy. The significance of proper trophoblast migration and invasion is demonstrated by pregnancy disorders such as pre-eclampsia and intrauterine growth restriction, which are associated with inadequate trophoblast invasion of the maternal vasculature. Unfortunately, our understanding of the mechanisms by which the placenta develops from migrating trophoblasts is limited. In vitro analysis of cell migration via the scratch assay is a useful tool in identifying factors that regulate trophoblast migratory capacity. However, this assay alone does not define the cellular changes that can result in altered cell migration. This protocol describes three different in vitro assays that are used collectively to evaluate trophoblast cell movement: the scratch assay, the invasion assay, and the proliferation assay. The protocols described here may also be modified for use in other cell lines to quantify cell movement in response to stimuli. These methods allow investigators to identify individual factors that contribute to the cell movement and provide a thorough examination of potential mechanisms underlying apparent changes in cell migration.

INTRODUCTION:

Placental development is a crucial step in the establishment of pregnancy, impacting both maternal and fetal health. However, the mechanistic basis by which this process occurs is not fully understood. Cell migration is an important biological process that contributes to the establishment and functions of the placenta during pregnancy. Following blastocyst implantation, the trophectoderm differentiates into villous trophoblasts, which cover the surface of the chorionic villi and are involved in gas and nutrient exchange, and extravillous trophoblasts (EVTs), which migrate out from the villi and invade the maternal decidua and vasculature¹. Migration of the EVT is essential for remodeling maternal spiral arteries and establishing uteroplacental circulation to support fetal growth². Inadequate trophoblast invasion during pregnancy results in abnormal placental development and may contribute to pregnancy complications such as preeclampsia, gestational hypertension, intra-uterine growth restriction, and preterm birth^{3,4}. Therefore, understanding the factors that affect trophoblast motility is essential to determining the pathways required for normal placentation.

Trophoblast migration is controlled by a complex network of signaling molecules, including growth factors, cytokines, hormones, and angiogenic factors⁵. Due to the limitations of studying the placenta in vivo, in vitro assays utilizing immortalized human trophoblast cell lines have been crucial to identifying factors that contribute to trophoblast motility. Scratch and invasion assays have been used extensively to quantitatively assess the role of individual molecules on trophoblast cell migration⁶⁻⁸. However, while useful in tandem to investigate how changes in migration may be caused by changes in cell invasiveness, these two assays do not account for additional mechanisms that may contribute to altered rates of cell migration. For example, reductions to the rate of cell proliferation may result in fewer cells available to migrate.

Here, we describe quantitative in vitro methods for assessing trophoblast migration using scratch, cell proliferation, and cell invasion assays. In the scratch assay, a uniform wound is created in a cell monolayer, and the migration of cells to fill the gap is measured by automated, time-lapse imaging of the wound size and density of cells within the wound. The cell proliferation assay is based on calculating the ratio of cells at each time point compared to a known starting quantity of cells. In the cell invasion assay, cells are seeded atop an extracellular matrix-coated cell culture insert chamber (e.g. Transwell), and the number of cells that invade through the extracellular matrix in response to chemo-attractant are counted.

The scratch assay is a simple and effective tool that may be used to determine how different environmental conditions affect cell migration. The proliferation and invasion assays may subsequently be used to determine the contribution of cell proliferation and invasiveness to overall changes in cell migration. Collectively, these assays provide robust measurements of biological processes that may contribute to cell motility. Two immortalized first-trimester trophoblast cell lines were used in the described assays, Swan.71 (Sw.71) and HTR-8/SVneo^{9,10}. However, these assays may also be optimized for use in other cell types to identify key modulators of cell migration and invasion.

PROTOCOL:

1. Cell preparation

1.1 Maintain cells in T-75 flasks in standard growth media at 37 °C, 5% CO₂, and 95% humidity.

NOTE: The cells used in these experiments were the immortalized first-trimester trophoblast cell lines Swan.71 (Sw.71) and HTR-8/SVneo^{9,10}. The Sw.71 cells were maintained in DMEM/F-12 supplemented with 10% heat-inactivated fetal bovine serum (FBS), 1.0 mM sodium pyruvate, 10 mM HEPES, 0.10 mM MEM non-essential amino acids, 100 units/mL penicillin, and 100 µg/mL streptomycin. The HTR-8/SVneo cells were maintained in RPMI-1640 supplemented with 5% heat-inactivated FBS.

1.2 Allow the cells to replicate until they reach 90-100% confluence. Using a sterile tissue-culture flow hood, aspirate the media from the flask and wash cells with 10 mL of sterile 1x phosphate-buffered saline (PBS).

1.3 Aspirate the PBS and add 5 mL of 1x (0.05%) trypsin-EDTA to the flask, making sure that cells are covered by trypsin. Place flask in the laboratory incubator maintained at 37°C, 5% CO₂, and 95% humidity until all cells have detached from the bottom of the flask (approximately 5-10 min).

1.4 Add 10 mL of pre-warmed growth media to the flask to deactivate the trypsin-EDTA.

2. Scratch assay

2.1 Following step 1.4, seed the appropriate number of cells into a 24-well plate to achieve 100% confluence in 48 h.

NOTE: It is possible to perform the scratch assay with a variety of different plate layouts. The maximum number of wells allowed by the wound maker tool is a 96-well format.

2.2 The next day (day prior to scratch assay), change media to phenol-red free media supplemented as required, including heat-inactivated, charcoal dextran-stripped FBS.

NOTE: Other studies have recommended the use of media with low concentration FBS (e.g., 1%) to minimize cell proliferation, which can be used as an alternative in this protocol¹¹.

2.3 On the day of the scratch assay, pretreat cells for 30 min by adding desired treatment to the media in each well. The outlined experiments utilized vehicle (1x PBS) and 100 nM dexamethasone diluted in 1x PBS.

2.4 To create uniform wounds, place sterile 10 µL pipette tips on the pins of the wound maker tool. Lower the tips into the first row of wells and move the plate along the track of the wound maker until the pipette tips reach the other side of the well.

2.4.1 Move the plate back to the starting position, allowing the pipette tips to continuously touch the bottom of the plate to ensure a constant wound across the diameter of the well. Remove and replace the sterile 10 μ L pipette tips and lower the tips into the next row of wells.

2.5 Repeat step 2.4 until all wells are scratched.

NOTE: If a wound maker tool is not available, wounds can be created by manually scraping the center of the wells with a 10 μ L pipette tip.

2.6 Carefully aspirate media and gently wash cells twice with 1x PBS. Following a final wash, add supplemented phenol-red free, stripped or low-FBS media with desired treatment or vehicle (as directed in step 2.3).

NOTE: HTR-8/SVneo cells should be washed with supplemented phenol-red media, as washing with 1X PBS will cause cells to detach.

2.7 Place the 24-well plate containing scratched wells in the automated, time-lapse imager (see **Table of Materials**) housed in a laboratory incubator maintained at 37 °C, 5% CO₂, and 95% humidity. Image wells at regular intervals as needed to allow cells to complete wound healing (e.g., every 2 h for 72 h).

2.8 Calculate the wound density and width by the software associated with the automated, time-lapse imager (see **Table of Materials**). To calculate the percentage change in wound size relative to the size of the starting wound, set the wound width at time 0 equal to 100%. Divide the wound size in each subsequent timepoint by the wound size at time 0 and multiply by 100 to obtain the percentage (**Figure 1**).

3. Invasion assay

3.1 Following step 1.4, seed the appropriate number of cells into 6-well plates to allow cells to reach 90% confluence in 48 h. Maintain cells in a laboratory incubator set to 37 °C, 5% CO₂, and 95% humidity.

3.2 The next day, change media to phenol-red free media supplemented as required, including heat-inactivated, charcoal dextran-stripped FBS.

NOTE: Cells can be pretreated at this time depending on experimental design.

3.3 At this time, place the vial of the 10 mg/mL extracellular matrix (see **Table of Materials**) on ice, and let it thaw in the refrigerator overnight.

3.4 The next day, pre-cool invasion assay supplies by placing 24-well plates, cell culture inserts, microcentrifuge tubes, and pipette tips in the refrigerator (4 °C) for at least 2 h prior to working with the extracellular matrix.

3.5 Using chilled supplies in the tissue culture hood, dilute 10 mg/mL extracellular matrix 1:1 with phenol-red-free, serum-free media to a final concentration of 5 mg/mL.

NOTE: Always keep the stock and diluted extracellular matrix on ice. The ratio of extracellular matrix to media can be adjusted based on the properties of the cell line used in the assay.

3.6 Using chilled supplies in the tissue culture hood, add 100 μ L of diluted extracellular matrix to the inserts (see **Table of Materials**) that have been placed in the 24-well plate. Make sure that the matrix is level without any bubbles. Place the 24-well plate containing matrix-coated inserts in the incubator at 37 °C to allow the matrix to harden.

3.7 To prep cells for invasion assay, wash cells with 1 mL of 1x PBS, aspirate the PBS, and add 500 μ L of 1x trypsin-EDTA to each well. Place the 6-well plate in the laboratory incubator maintained at 37 °C, 5% CO₂, and 95% humidity until all cells have detached from the bottom of the plate.

3.8 Once cells have detached, add 500 μ L of phenol-red-free, serum-free media to each well of the trypsinized cells.

3.9 Transfer 1,000 μ L of detached cells to microcentrifuge tube and spin down for 5 min at 400 x g at 4 °C.

3.10 Aspirate media and resuspend cells in phenol-red-free, serum-free media (volume will depend on concentration of cells). Count cells using an automated cell counter (see **Table of Materials**) and adjust volume of cell suspension for a final concentration of 5×10^5 cells per mL.

NOTE: A hemocytometer and microscope may also be used to count cells.

3.11 Add 600 μ L of complete growth media to the wells of the 24-well plate that will be used for the invasion assay.

NOTE: Additional chemoattractants or treatments may be added to the complete growth medium in the well (lower chamber). The outlined experiments added vehicle (1x PBS) or 100 nM dexamethasone diluted in 1x PBS to the lower chamber.

3.12 Place the pre-coated insert into each well containing complete growth medium that will be used for the invasion assay. Then add 200 μ L of cells on top of each pre-coated cell insert (upper chamber) for a total of 1×10^5 cells.

NOTE: As a negative control for this assay, an equal volume of phenol-red-free, serum-free media (without cells) can be added to the upper chamber.

3.13 Place 24-well plate in the laboratory incubator maintained at 37 °C, 5% CO₂, and 95%

humidity for 24 h.

NOTE: The 24 h incubation period was optimized for the immortalized first-trimester trophoblast cells and further tests may be required to determine the required incubation period in other cell lines.

3.14 Following overnight incubation, suction the remaining media from the upper and lower chamber without disturbing the extracellular matrix. Then, carefully remove the extracellular matrix and non-invaded cells from the upper portion of the insert with a cotton swab, swabbing as many times as necessary to remove extracellular matrix.

3.15 Wash each insert 3x with 1x PBS, adding PBS to both the upper and lower chambers of the well. Aspirate PBS after each wash.

3.16 Fix cells attached to the inserts by placing inserts into 100% ice-cold methanol for 30 min at 4 °C. Wash inserts 3x with 1x PBS and remove PBS after the final wash. Stain the cells attached to the inserts for 10 min with 0.2% crystal violet in 20% ethanol.

3.18 Rinse 3x with deionized water and aspirate deionized water after the final wash.

3.19 Air-dry inserts for 1 h at room temperature. Using forceps and a razor blade, carefully cut the bottom membrane of the insert and mount on a glass slide with the bottom side facing up. Allow mounting media to dry at room temperature.

3.21 Obtain at least 4 unique images of invaded cells per sample using a light microscope with a 20x objective. Count the total number of cells in each image and normalize the number of cells to control samples and plot data (**Figure 2**).

4. Proliferation assay

4.1 Following step 1.4, count trypsinized cells from the flask using an automated cell counter and seed into 6-well plates at a density of 2×10^5 cells per well in standard growth media.

4.2 Place cells in a laboratory incubator maintained at 37 °C, 5% CO₂, and 95% humidity for 4 h or until cells have adhered.

4.3 Change media to phenol-red free media supplemented as required, including heat-inactivated, charcoal dextran-stripped FBS and add desired treatment. The outlined experiments added vehicle (1x PBS) or 100 nM dexamethasone diluted in 1x PBS. Place the 6-well plates in a laboratory incubator maintained at 37 °C, 5% CO₂, and 95% humidity.

4.4 Remove media and replace with new media and treatment every 48 h.

4.5 After 24, 48, or 72 h treatment, wash cells with 1 mL of 1x PBS and add 500 µL of trypsin-

EDTA to each well. Place 6-well plate in incubator until cells have detached from plate.

4.6 Once cells have detached from the plate, add 500 μ L of the supplemented phenol-red free media to deactivate trypsin.

4.7 Add 5 μ L of trypsinized cells to 5 μ L of Trypan blue in a separate tube and mix by pipetting.

4.8 Count cells from each well in duplicate using an automated cell counter.

4.9 Average the number of cells per well at each time point and plot as a function of time (Figure 3).

REPRESENTATIVE RESULTS:

The immortalized human first-trimester trophoblast cell lines Sw.71 and HTR-8/SVneo were used in these experiments to determine the role of glucocorticoids in trophoblast cell migration¹². Glucocorticoids were used in these experiments as they have recently been shown to alter trophoblast functions, although alternative treatments could be used¹². Both cell lines were treated with vehicle (1x PBS) or 100 nM of the synthetic glucocorticoid dexamethasone (Dex) for all experiments. Wound density and size were measured every 2 h for 72 h using an automated, time-lapse imaging system. **Figure 1** shows an example of images and results obtained from the scratch assay at different timepoints. Sample images from 0, 8, and 18 h timepoints for both treatments have been provided (**Figure 1A**). The wound density and wound size are graphed over time for samples treated with vehicle control (Veh) or 100 nM Dex (**Figure 1B**). Dex treatment reduced the rate of wound closure as determined by both wound density and wound size, indicating that glucocorticoids inhibit cell migration in first-trimester trophoblast cells.

Figure 2 shows an example of images taken of the cell culture insert following the invasion assay. Cells were treated for 24 h with Veh or 100 nM Dex. Invaded cells were counted from four independent replicates per treatment using four unique fields of view per replicate. Glucocorticoid treatment reduced cell invasiveness, as shown by a 15% reduction in the number of invaded cells.

Figure 3 shows an example of the cell proliferation assay. Cells were counted at 24, 48, and 72 h following treatment with Veh or 100 nM Dex. Glucocorticoid treatment reduced cell proliferation, as indicated by fewer cells at each time point. Overall, these assays demonstrate that glucocorticoid exposure reduces cell motility by inhibiting both cell proliferation and invasion.

FIGURE AND TABLE LEGENDS:

Figure 1: Cell Scratch Assay. (A) Representative images of wounds for Veh- and Dex-treated Sw.71 cells at 0, 8, and 18 h are shown. Red lines indicate wound size. (B) Wound density and wound size were measured in Sw.71 and HTR-8/SVneo cells treated with vehicle (Veh) or 100 nM Dex. Pictures were taken every 2 h for 72 h using an automated, time-lapse microscope. Data represents the mean of four independent replicates \pm SEM.

Figure 2: Cell Invasion Assay. Invasion assays were conducted with Sw.71 and HTR-8/SVneo cells treated for 24 h with vehicle (Veh) or 100 nM Dex. **(A)** Representative images from the invasion assay for Veh- and Dex-treated cells after 24 h incubation. Inset image is negative control with no cells added to the upper chamber. Images taken at 200x magnification. Scale bars are 120 μ m. **(B)** Invaded cells were counted and the bar graphs represent the normalized mean of four independent replicates \pm SEM.

Figure 3: Cell Proliferation Assay. Sw.71 and HTR-8/SVneo cells treated with vehicle (Veh) or 100 nM Dex were counted every 24 h using an automated cell counter. Cell counts are graphed as the mean \pm SEM of at least 11 independent replicates.

DISCUSSION:

This procedure builds on the use of migration and invasion assays to include the rate of cell proliferation as a potential contributor to measured differences in trophoblast cell movement. Used together, these in vitro assays are simple and effective methods that can be used to identify the cellular pathways that regulate trophoblast migration. As described above, trophoblast cells may be treated with hormones, cytokines, growth factors, or other molecules to determine their impact on trophoblast movement. Alternatively, target proteins may be depleted from cells to elucidate their functional role in trophoblast motility. Identifying key modulators of trophoblast migration may provide a better understanding of the basic mechanisms underlying complications of pregnancy related to placental defects, including preeclampsia, intrauterine growth restriction, and preterm birth.

There are several critical steps in this protocol that are required to obtain accurate results. Because phenol-red has estrogenic activity at concentrations used in cell culture media¹³, it is important that phenol-red free media is used for experimental endpoints to prevent undesired activation of the estrogen receptor in cells. During the transwell invasion assay, it is important to ensure that the extracellular matrix is homogenous, level, and that cold supplies are used to prevent premature polymerization of the matrix. When conducting the cell proliferation and invasion assays, it is important to count samples immediately to prevent re-adherence of the cells to tissue culture plates. It should also be taken under consideration that cell death due to experimental treatment may influence the results of all three assays. Therefore, markers of cell death (e.g., lactate dehydrogenase release, phosphatidylserine externalization, or DNA degradation) in response to treatment should be evaluated in the experimental cell line prior to evaluating migration, invasion, and proliferation¹⁴. Some limitations exist for these assays, for example, the process of creating a wound in a cell monolayer induces a cell injury response than may confound the cell migration process. Furthermore, manual scraping may introduce interexperiment variability, although utilizing a wound-maker tool that creates uniform wound widths can partially mitigate this limitation. The disadvantage of the invasion assay is that it is an endpoint assay, and the kinetics of movement are not easily attained. Despite these limitations, the assays described here provide reproducible, quantitative data at relatively low-cost.

The assays described here can also be modified to measure cell migration in other cell types,

although these assays would not be suitable for non-adherent cell types. In the scratch assay, the imaging intervals for time-lapse microscopy may be adjusted to sufficiently capture differences in the rate of cell migration. Automated systems for live cell imaging can capture wound size images as frequently as every 15 minutes. Images taken at least every 30 minutes can be stitched together to create a movie of wound healing. In the invasion assay, the concentration of extracellular matrix, the total number of cells seeded, and the length of incubation prior to fixing and counting cells may be adjusted to account for the specific rate of invasion in different cell types. In the cell proliferation assay, the number of cells seeded onto the plates and the time points for cell counting may be adjusted to account for different rates of cell growth. Overall, these assays are flexible and highly accessible tools that can be used in a wide range of cell types to identify the mechanisms underlying cell migration.

ACKNOWLEDGMENTS:

The authors thank Dr. Gil Mor for providing the Sw.71 cells. This research was supported by an Albert McKern Scholar Award to S.W.

DISCLOSURES:

The authors have nothing to disclose.

REFERENCES:

- 1 Ji, L. et al. Placental trophoblast cell differentiation: Physiological regulation and pathological relevance to preeclampsia. *Molecular Aspects of Medicine*. **34** (5), 981-1023, doi:https://doi.org/10.1016/j.mam.2012.12.008 (2013).
- 2 Caniggia, I., Winter, J., Lye, S., Post, M. Oxygen and placental development during the first trimester: implications for the pathophysiology of pre-eclampsia. *Placenta*. **21** S25-S30 (2000).
- 3 Norwitz, E. R. Defective implantation and placentation: laying the blueprint for pregnancy complications. *Reproductive Biomedicine Online*. **13** (4), 591-599 (2006).
- 4 Ness, R. B., Sibai, B. M. Shared and disparate components of the pathophysiologies of fetal growth restriction and preeclampsia. *American Journal of Obstetrics & Gynecology*. **195** (1), 40-49 (2006).
- 5 Knöfler, M. Critical growth factors and signalling pathways controlling human trophoblast invasion. *The International Journal of Developmental Biology*. **54** (2-3), 269-280, doi:10.1387/ijdb.082769mk (2010).
- 6 Huber, A. V., Saleh, L., Bauer, S., Husslein, P., Knöfler, M. TNF α -Mediated Induction of PAI-1 Restricts Invasion of HTR-8/SVneo Trophoblast Cells. *Placenta*. **27** (2), 127-136, doi:10.1016/j.placenta.2005.02.012 (2006).
- 7 Nadeem, L. et al. Nodal Signals through Activin Receptor-Like Kinase 7 to Inhibit Trophoblast Migration and Invasion. *The American Journal of Pathology*. **178** (3), 1177-1189, doi:10.1016/j.ajpath.2010.11.066 (2011).
- 8 Onogi, A. et al. Hypoxia inhibits invasion of extravillous trophoblast cells through reduction of matrix metalloproteinase (MMP)-2 activation in the early first trimester of human pregnancy. *Placenta*. **32** (9), 665-670, doi:10.1016/j.placenta.2011.06.023 (2011).
- 9 Straszewski-Chavez, S. L. et al. The isolation and characterization of a novel telomerase immortalized first trimester trophoblast cell line, Swan 71. *Placenta*. **30** (11), 939-948 (2009).

- 10 Graham, C. H. et al. Establishment and characterization of first trimester human trophoblast cells with extended lifespan. *Experimental Cell Research*. **206** (2), 204-211 (1993).
- 11 Liang, C. C., Park, A. Y., Guan, J. L. In vitro scratch assay: a convenient and inexpensive method for analysis of cell migration in vitro. *Nature Protocols*. **2** (2), 329-333, doi:10.1038/nprot.2007.30 (2007).
- 12 Kisanga, E. P., Tang, Z., Guller, S., Whirledge, S. Glucocorticoid signaling regulates cell invasion and migration in the human first-trimester trophoblast cell line Sw. 71. *American Journal of Reproductive Immunology*. e12974 (2018).
- 13 Berthois, Y., Katzenellenbogen, J. A., Katzenellenbogen, B. S. Phenol red in tissue culture media is a weak estrogen: implications concerning the study of estrogen-responsive cells in culture. *Proceedings of the National Academy of Sciences of the United States of America*. **83** (8), 2496-2500 (1986).
- 14 Cummings, B. S., Schnellmann, R. G. Measurement of cell death in mammalian cells. *Current Protocols in Pharmacology*. **Chapter 12**, Unit 12 18, doi:10.1002/0471141755.ph1208s25 (2004).

Figure 1

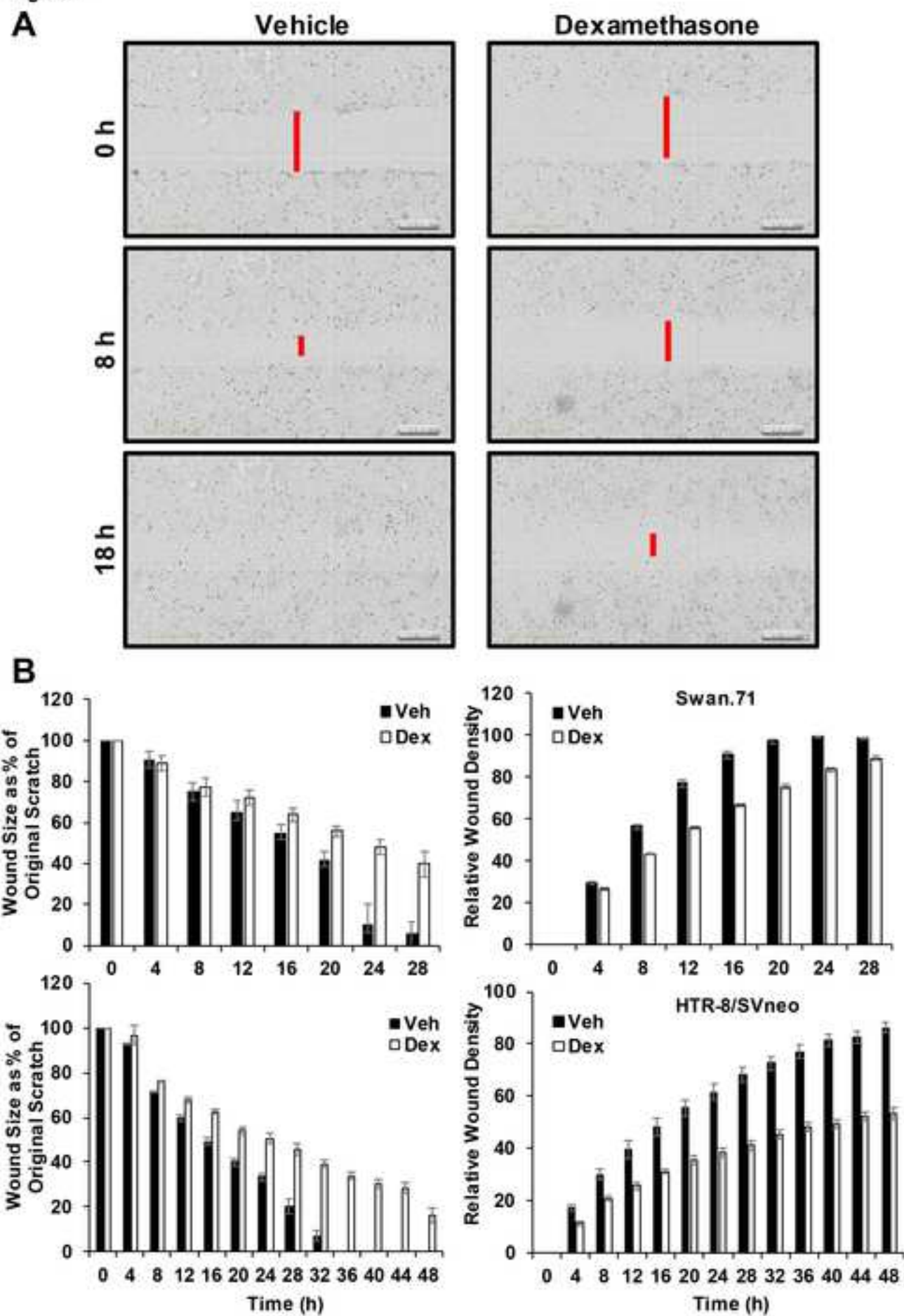


Figure 2

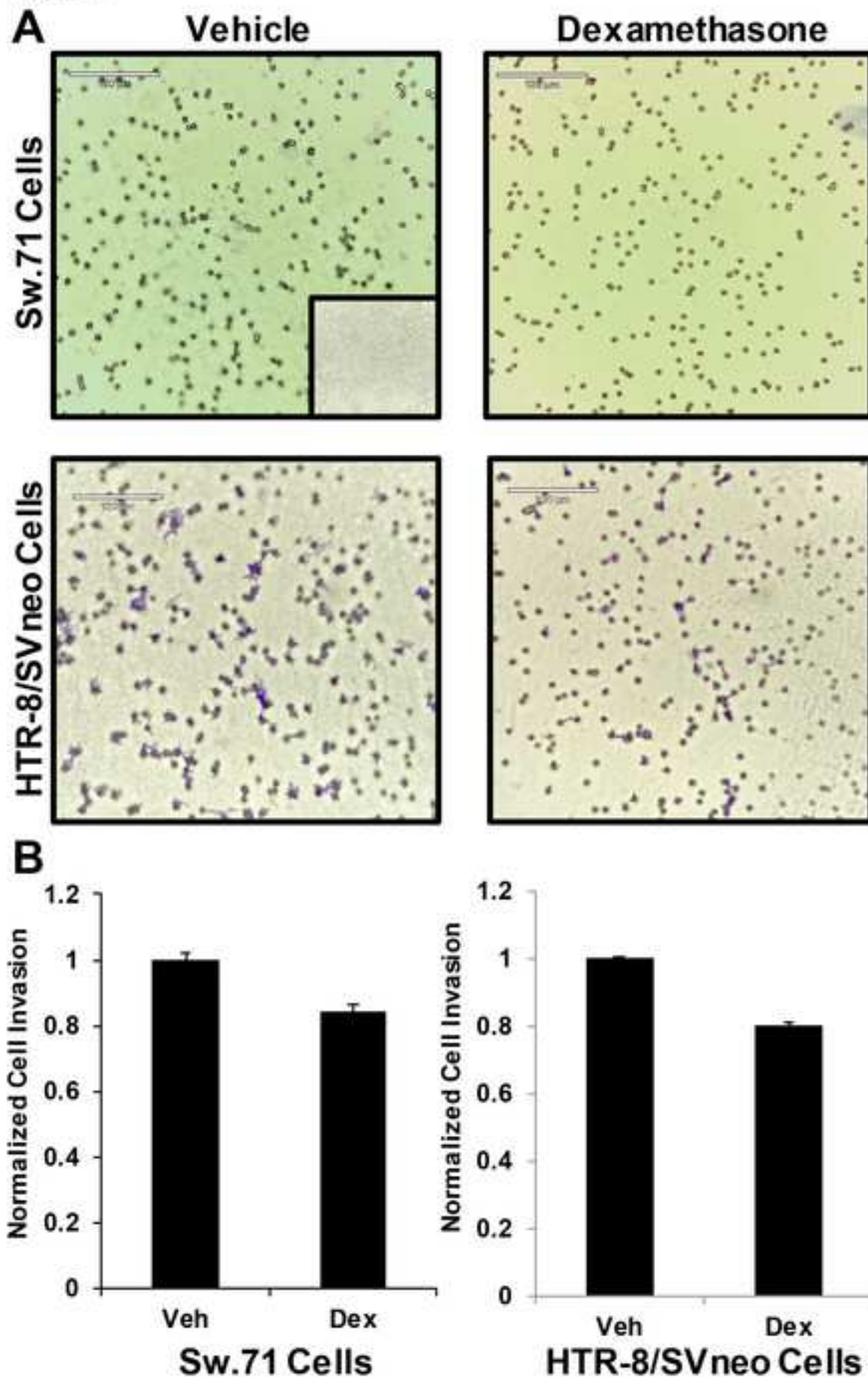
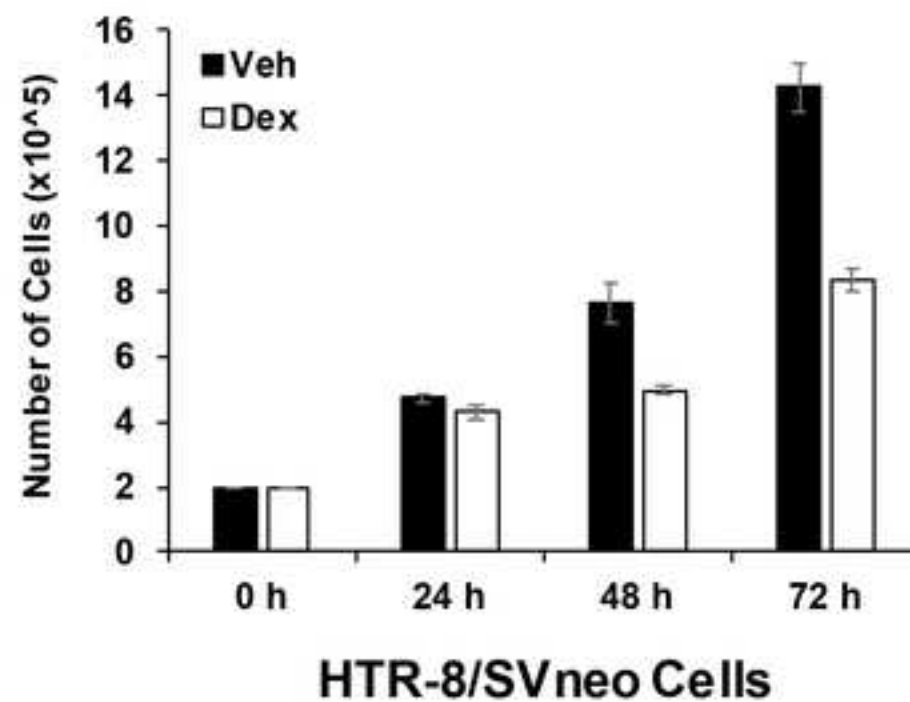
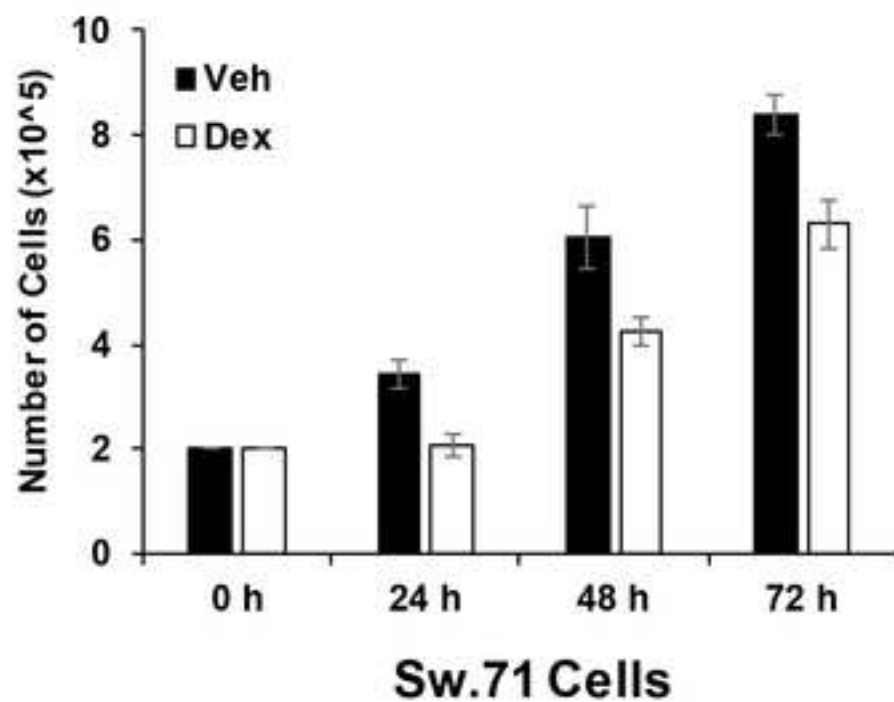


Figure 3



Name of Material/ Equipment	Company	Catalog Number
0.4% Trypan blue stain	Thermo Fisher Scientific	15250-061
0.5% Trypsin-EDTA	Life Technologies	15400-054
1.0 M HEPES	AmericanBio	AB06021-00100
10 mM MEM non-essential amino acids	Life Technologies	11140-050
100 mM sodium pyruvate	Life Technologies	11360-070
24-well plate transwell inserts	Corning	3422
Charcoal dextran-stripped FBS	Gemini Bio-Products	100-119
Countess II Automated Cell Counter	Thermo Fisher Scientific	AMQAX1000
Crystal Violet	Sigma Aldrich	C0775
Cytoseal 60	Thermo Fisher Scientific	8310-4
Dexamethasone (Dex; 1, 4-pregnadien-9 α -fluoro-16 α -methyl-11 β , 17, 21-triol-3, 20-dione; \geq 98% TLC)	Steraloids	P0500-000
DMEM/Ham's F12	Life Technologies	11330-032
Fetal Bovine Serum	Sigma Aldrich	F2442
IncuCyte 24-well ImageLock Plates	Essen BioScience	4365
IncuCyte software	Essen BioScience	2010A Rev2
IncuCyte ZOOM system	Essen BioScience	N/A
Matrigel Membrane Matrix	Becton Dickinson	356231

Micro Slides	VWR International, LLC	48311-7003
Microscope cover glass	Fisher Scientific	12-545-E
Olympus IX71 inverted microscope	Olympus	IX71
Penicillin (10,000 units/mL)/streptomycin (10,000 µg/mL)	Life Technologies	151-40-122
Phenol-red free DMEM/Ham's F12	Life Technologies	11039-021
Semi-automatic wound maker tool	Essen BioScience	N/A

Comments/Description

Contain polycarbonate filters with an 8 μ m pore size

If using the IncuCyte Zoom imaging system, seed cells onto IncuCyte ImageLock Plates. These plates have fiducial markers on the bottom of the plate that are used as a reference for repeat imaging in a constant field of view.

Scratch assay images were captured and analyzed using the preset "Scratch Wound" parameters on the IncuCyte ZOOM system. Other time-lapse microscopes may also be used.

Growth factor reduced, phenol-red free



1 Alewife Center #200
Cambridge, MA 02140
tel. 617.945.9051
www.jove.com

ARTICLE AND VIDEO LICENSE AGREEMENT

Title of Article:

In Vitro Assays to Determine Trophoblast Migration, Invasion, and Proliferation

Author(s):

Edwina P. Kisanga, Zhonghua Tang, Seth Guiler, Shannon Whirlledge

Item 1: The Author elects to have the Materials be made available (as described at <http://www.jove.com/publish>) via:

☒ Standard Access

☐ Open Access

Item 2: Please select one of the following items:

☒ The Author is **NOT** a United States government employee.

☐ The Author is a United States government employee and the Materials were prepared in the course of his or her duties as a United States government employee.

☐ The Author is a United States government employee but the Materials were NOT prepared in the course of his or her duties as a United States government employee.

ARTICLE AND VIDEO LICENSE AGREEMENT

1. **Defined Terms.** As used in this Article and Video License Agreement, the following terms shall have the following meanings: "**Agreement**" means this Article and Video License Agreement; "**Article**" means the article specified on the last page of this Agreement, including any associated materials such as texts, figures, tables, artwork, abstracts, or summaries contained therein; "**Author**" means the author who is a signatory to this Agreement; "**Collective Work**" means a work, such as a periodical issue, anthology or encyclopedia, in which the Materials in their entirety in unmodified form, along with a number of other contributions, constituting separate and independent works in themselves, are assembled into a collective whole; "**CRC License**" means the Creative Commons Attribution-Non Commercial-No Derivs 3.0 Unported Agreement, the terms and conditions of which can be found at: <http://creativecommons.org/licenses/by-nc-nd/3.0/legalcode>; "**Derivative Work**" means a work based upon the Materials or upon the Materials and other pre-existing works, such as a translation, musical arrangement, dramatization, fictionalization, motion picture version, sound recording, art reproduction, abridgment, condensation, or any other form in which the Materials may be recast, transformed, or adapted; "**Institution**" means the institution, listed on the last page of this Agreement, by which the Author was employed at the time of the creation of the Materials; "**JOVE**" means MyJOVE Corporation, a Massachusetts corporation and the publisher of The Journal of Visualized Experiments; "**Materials**" means the Article and / or the Video; "**Parties**" means the Author and JOVE; "**Video**" means any video(s) made by the Author, alone or in conjunction with any other parties, or by JOVE or its affiliates or agents, individually or in collaboration with the Author or any other parties, incorporating all or any portion

of the Article, and in which the Author may or may not appear.

2. **Background.** The Author, who is the author of the Article, in order to ensure the dissemination and protection of the Article, desires to have the JOVE publish the Article and create and transmit videos based on the Article. In furtherance of such goals, the Parties desire to memorialize in this Agreement the respective rights of each Party in and to the Article and the Video.

3. **Grant of Rights in Article.** In consideration of JOVE agreeing to publish the Article, the Author hereby grants to JOVE, subject to **Sections 4 and 7** below, the exclusive, royalty-free, perpetual (for the full term of copyright in the Article, including any extensions thereto) license (a) to publish, reproduce, distribute, display and store the Article in all forms, formats and media whether now known or hereafter developed (including without limitation in print, digital and electronic form) throughout the world, (b) to translate the Article into other languages, create adaptations, summaries or extracts of the Article or other Derivative Works (including, without limitation, the Video) or Collective Works based on all or any portion of the Article and exercise all of the rights set forth in (a) above in such translations, adaptations, summaries, extracts, Derivative Works or Collective Works and (c) to license others to do any or all of the above. The foregoing rights may be exercised in all media and formats, whether now known or hereafter devised, and include the right to make such modifications as are technically necessary to exercise the rights in other media and formats. If the "Open Access" box has been checked in **Item 1** above, JOVE and the Author hereby grant to the public all such rights in the Article as provided in, but subject to all limitations and requirements set forth in, the CRC License.

ARTICLE AND VIDEO LICENSE AGREEMENT

4. **Retention of Rights in Article.** Notwithstanding the exclusive license granted to JoVE in **Section 3** above, the Author shall, with respect to the Article, retain the non-exclusive right to use all or part of the Article for the non-commercial purpose of giving lectures, presentations or teaching classes, and to post a copy of the Article on the Institution's website or the Author's personal website, in each case provided that a link to the Article on the JoVE website is provided and notice of JoVE's copyright in the Article is included. All non-copyright intellectual property rights in and to the Article, such as patent rights, shall remain with the Author.

5. **Grant of Rights in Video – Standard Access.** This **Section 5** applies if the "Standard Access" box has been checked in **Item 1** above or if no box has been checked in **Item 1** above. In consideration of JoVE agreeing to produce, display or otherwise assist with the Video, the Author hereby acknowledges and agrees that, Subject to **Section 7** below, JoVE is and shall be the sole and exclusive owner of all rights of any nature, including, without limitation, all copyrights, in and to the Video. To the extent that, by law, the Author is deemed, now or at any time in the future, to have any rights of any nature in or to the Video, the Author hereby disclaims all such rights and transfers all such rights to JoVE.

6. **Grant of Rights in Video – Open Access.** This **Section 6** applies only if the "Open Access" box has been checked in **Item 1** above. In consideration of JoVE agreeing to produce, display or otherwise assist with the Video, the Author hereby grants to JoVE, subject to **Section 7** below, the exclusive, royalty-free, perpetual (for the full term of copyright in the Article, including any extensions thereto) license (a) to publish, reproduce, distribute, display and store the Video in all forms, formats and media whether now known or hereafter developed (including without limitation in print, digital and electronic form) throughout the world, (b) to translate the Video into other languages, create adaptations, summaries or extracts of the Video or other Derivative Works or Collective Works based on all or any portion of the Video and exercise all of the rights set forth in (a) above in such translations, adaptations, summaries, extracts, Derivative Works or Collective Works and (c) to license others to do any or all of the above. The foregoing rights may be exercised in all media and formats, whether now known or hereafter devised, and include the right to make such modifications as are technically necessary to exercise the rights in other media and formats. For any Video to which this **Section 6** is applicable, JoVE and the Author hereby grant to the public all such rights in the Video as provided in, but subject to all limitations and requirements set forth in, the CRC License.

7. **Government Employees.** If the Author is a United States government employee and the Article was prepared in the course of his or her duties as a United States government employee, as indicated in **Item 2** above, and any of the licenses or grants granted by the Author hereunder exceed the scope of the 17 U.S.C. 403, then the rights granted hereunder shall be limited to the maximum

rights permitted under such statute. In such case, all provisions contained herein that are not in conflict with such statute shall remain in full force and effect, and all provisions contained herein that do so conflict shall be deemed to be amended so as to provide to JoVE the maximum rights permissible within such statute.

8. **Protection of the Work.** The Author(s) authorize JoVE to take steps in the Author(s) name and on their behalf if JoVE believes some third party could be infringing or might infringe the copyright of either the Author's Article and/or Video.

9. **Likeness, Privacy, Personality.** The Author hereby grants JoVE the right to use the Author's name, voice, likeness, picture, photograph, image, biography and performance in any way, commercial or otherwise, in connection with the Materials and the sale, promotion and distribution thereof. The Author hereby waives any and all rights he or she may have, relating to his or her appearance in the Video or otherwise relating to the Materials, under all applicable privacy, likeness, personality or similar laws.

10. **Author Warranties.** The Author represents and warrants that the Article is original, that it has not been published, that the copyright interest is owned by the Author (or, if more than one author is listed at the beginning of this Agreement, by such authors collectively) and has not been assigned, licensed, or otherwise transferred to any other party. The Author represents and warrants that the author(s) listed at the top of this Agreement are the only authors of the Materials. If more than one author is listed at the top of this Agreement and if any such author has not entered into a separate Article and Video License Agreement with JoVE relating to the Materials, the Author represents and warrants that the Author has been authorized by each of the other such authors to execute this Agreement on his or her behalf and to bind him or her with respect to the terms of this Agreement as if each of them had been a party hereto as an Author. The Author warrants that the use, reproduction, distribution, public or private performance or display, and/or modification of all or any portion of the Materials does not and will not violate, infringe and/or misappropriate the patent, trademark, intellectual property or other rights of any third party. The Author represents and warrants that it has and will continue to comply with all government, institutional and other regulations, including, without limitation all institutional, laboratory, hospital, ethical, human and animal treatment, privacy, and all other rules, regulations, laws, procedures or guidelines, applicable to the Materials, and that all research involving human and animal subjects has been approved by the Author's relevant institutional review board.

11. **JoVE Discretion.** If the Author requests the assistance of JoVE in producing the Video in the Author's facility, the Author shall ensure that the presence of JoVE employees, agents or independent contractors is in accordance with the relevant regulations of the Author's institution. If more than one author is listed at the beginning of this Agreement, JoVE may, in its sole

ARTICLE AND VIDEO LICENSE AGREEMENT

discretion, elect not take any action with respect to the Article until such time as it has received complete, executed Article and Video License Agreements from each such author. JoVE reserves the right, in its absolute and sole discretion and without giving any reason therefore, to accept or decline any work submitted to JoVE. JoVE and its employees, agents and independent contractors shall have full, unfettered access to the facilities of the Author or of the Author's institution as necessary to make the Video, whether actually published or not. JoVE has sole discretion as to the method of making and publishing the Materials, including, without limitation, to all decisions regarding editing, lighting, filming, timing of publication, if any, length, quality, content and the like.

12. **Indemnification.** The Author agrees to indemnify JoVE and/or its successors and assigns from and against any and all claims, costs, and expenses, including attorney's fees, arising out of any breach of any warranty or other representations contained herein. The Author further agrees to indemnify and hold harmless JoVE from and against any and all claims, costs, and expenses, including attorney's fees, resulting from the breach by the Author of any representation or warranty contained herein or from allegations or instances of violation of intellectual property rights, damage to the Author's or the Author's institution's facilities, fraud, libel, defamation, research, equipment, experiments, property damage, personal injury, violations of institutional, laboratory, hospital, ethical, human and animal treatment, privacy or other rules, regulations, laws, procedures or guidelines, liabilities and other losses or damages related in any way to the submission of work to JoVE, making of videos by JoVE, or publication in JoVE or elsewhere by JoVE. The Author shall be responsible for, and shall hold JoVE harmless from, damages caused by lack of sterilization, lack of cleanliness or by contamination due to

the making of a video by JoVE its employees, agents or independent contractors. All sterilization, cleanliness or decontamination procedures shall be solely the responsibility of the Author and shall be undertaken at the Author's expense. All indemnifications provided herein shall include JoVE's attorney's fees and costs related to said losses or damages. Such indemnification and holding harmless shall include such losses or damages incurred by, or in connection with, acts or omissions of JoVE, its employees, agents or independent contractors.

13. **Fees.** To cover the cost incurred for publication, JoVE must receive payment before production and publication the Materials. Payment is due in 21 days of invoice. Should the Materials not be published due to an editorial or production decision, these funds will be returned to the Author. Withdrawal by the Author of any submitted Materials after final peer review approval will result in a US\$1,200 fee to cover pre-production expenses incurred by JoVE. If payment is not received by the completion of filming, production and publication of the Materials will be suspended until payment is received.

14. **Transfer, Governing Law.** This Agreement may be assigned by JoVE and shall inure to the benefits of any of JoVE's successors and assignees. This Agreement shall be governed and construed by the internal laws of the Commonwealth of Massachusetts without giving effect to any conflict of law provision thereunder. This Agreement may be executed in counterparts, each of which shall be deemed an original, but all of which together shall be deemed to me one and the same agreement. A signed copy of this Agreement delivered by facsimile, e-mail or other means of electronic transmission shall be deemed to have the same legal effect as delivery of an original signed copy of this Agreement.

A signed copy of this document must be sent with all new submissions. Only one Agreement is required per submission.

CORRESPONDING AUTHOR

Name:

Shannon Whirledge

Department:

Obstetrics, Gynecology, and Reproductive Sciences

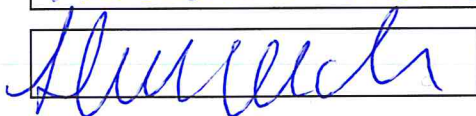
Institution:

Yale School of Medicine

Title:

Assistant Professor

Signature:



Date:

8-13-18

Please submit a **signed** and **dated** copy of this license by one of the following three methods:

1. Upload an electronic version on the JoVE submission site
2. Fax the document to +1.866.381.2236
3. Mail the document to JoVE / Attn: JoVE Editorial / 1 Alewife Center #200 / Cambridge, MA 02140

Editorial Comments:

Editorial Comment: Please take this opportunity to thoroughly proofread the manuscript to ensure that there are no spelling or grammar issues.

Author's Response: We have now proofread the manuscript for spelling and grammar.

Editorial Comment: JoVE cannot publish manuscripts containing commercial language. This includes trademark symbols (™), registered symbols (®), and company names before an instrument or reagent. Please remove all commercial language from your manuscript and use generic terms instead. All commercial products should be sufficiently referenced in the Table of Materials and Reagents. You may use the generic term followed by “(see table of materials)” to draw the readers’ attention to specific commercial names. Examples of commercial sounding language in your manuscript are: IncuCyte, Matrigel, Eppendorf, etc.

Author's Response: Commercial language has been removed from the manuscript and instead references to the Table of Materials and Reagents have now been included.

Editorial Comment: Please adjust the numbering of the Protocol to follow the JoVE Instructions for Authors. For example, 1 should be followed by 1.1 and then 1.1.1 and 1.1.2 if necessary. Please refrain from using bullets, dashes, or indentations.

Author's Response: Numbers have been adjusted throughout the manuscript.

Editorial Comment: Please add more details to your protocol steps. There should be enough detail in each step to supplement the actions seen in the video so that viewers can easily replicate the protocol. Please ensure you answer the “how” question, i.e., how is the step performed? Alternatively, add references to published material specifying how to perform the protocol action. See examples below:

Lines 99, 148, 163, 185: Please specify the temperature of the incubator. **The temperature of the incubator is notated throughout.**

Line 112: Please specify the treatment applied in this step. Give an example. **The treatment and concentration is now notated, including vehicle used in experiment.**

Lines 122-123: It is unclear how to replace treatment. Please specify. **Terminology instructing “replace treatment” has been removed. The manuscript now instructs to add media after final wash and treatment as described in earlier step.**

Line 129: How to measure and plot the wound density? Is it done by a software? **Measurements are made with the software associated with the time-lapse imager. This is now indicated in the manuscript and the software version is listed in the Table of Materials.**

Line 133: Please specify where (i.e., from which step) the cells are obtained. What is the culturing temperature? **The step where cells are obtained and the culturing conditions are now specified**

Editorial Comment: Figure 1: Please change “hr”, the time unit, to “h”. Please label the x-axis in panel B.

Author’s Response: The time unit “hr” has been changed to “h” in Figure 1 and in the manuscript.

Editorial Comment: Figure 3: Please change “hr”, the time unit, to “h”. Please include a space between numbers and their time units (0 h, 24 h, etc.). Please change y-axis label “# of Cells ($\times 10^5$)” to “Number of Cells ($\times 10^5$)”.

Author’s Response: The time unit “hr” has been changed to “h” in Figure 3, spaces have been added, and the y-axis has been changed accordingly.

Editorial Comment: Discussion: Please discuss any limitations of the technique.

Author’s Response: We have now included potential limitations of these techniques in the Discussion, which are found in the second and third paragraph.

Reviewer: 1

We thank Reviewer 1 for their careful and constructive evaluation of our manuscript and suggestions for improving our study.

Reviewer's comment: Previous reports indicate that Swan.71 cells are not bona fide trophoblasts due to a report that these cells are HLA-G negative, HLA-A positive, and do not demonstrate hypomethylation of ELF5. If these cells are indeed HLA-G-negative, the authors should recognize the serious limitations of their study.

Author's response: There are published reports stating the presence, absence, and ability to induce the expression of HLA-G in Swan.71 cells (Straszewski-Chavez S.L., et al. 2009; Apps R., et al. 2009; Barrientos G., et al. 2015). The discrepancies in these reports may reflect the propagation of these cells outside of the laboratory that initially isolated and characterized the Swan.71 cells or cell culture methods. The cells used in these experiments were obtained directly from Dr. Gil Mor, who established and characterized the Swan.71 cells as being HLA-G positive. To further support the general application of the invasion, migration, and proliferation assays for first-trimester trophoblast cells, the authors have now repeated the experiments with HTR-8/SVneo cells, which are immortalized human first-trimester trophoblast cells. We have changed the title to reflect the use of immortalized trophoblast cell lines. We have also removed text defining the Swan.71 cells as extravillous trophoblasts and instead refer to the Swan.71 and HTR-8/SVneo cells more generally as immortalized human first-trimester trophoblast cells.

Reviewer's comment: Why is dexamethasone used to test migration of Swan.71 cells and what is the Vehicle used as a control? An explanation is needed for the biological rationale for this experiment. Do Swan71 cells have steroid receptors?

Author's response: Both the Swan.71 and HTR-8/SVneo cells express the glucocorticoid receptor and are glucocorticoid responsive, as has been previously determined (Straszewski-Chaves, S.L., et al., 2009; Kisanga, E.P., et al., 2018; Ma Y., et al., 2002; Wang B., et al., 2013). The synthetic glucocorticoid dexamethasone was used in these experiments based on our recently published study demonstrating that dexamethasone exposure can alter the function of Swan.71 cells. This is now clarified in the text of the manuscript. We have also indicated that 1X PBS was used as the vehicle control in all experiments.

Reviewer's comment: Figure 2: Normally when cells invade and move through the Transwell assay their morphology is similar to what is seen on a plastic substrate. The images here show cells that are uniformly circular. Either these cells are dead or is it that the pores of the assay are stained? Can the authors repeat and superimpose an image of the membrane? In addition, is it possible to assess the viability of the cells once they have migrated through?

Author's response: Crystal Violet stains proteins and DNA, highlighting the nucleus of the cells. It is likely that the relatively short Crystal Violet stain utilized in this procedure does not allow for adequate visualization of the cell cytoplasm. Nonetheless, we have now included a negative control for the invasion assay with a Matrigel insert that was not seeded with cells.

Reviewer's comment: It is important that the authors are considering proliferation when studying migration with the scratch assay. However, the method here is too simplified. A proliferation marker is

needed (Ki67) to be certain. The lower number of cells counted in Figure 3 with Veh could be due to cell death.

Author's response: The authors have now advised readers in the discussion that cell death may influence the results of these assays. Therefore, trophoblast cells should be evaluated for the induction of cell death by experimental treatment *a priori*.

Reviewer's comment: It is essential to discuss the limitations of these assays. For example, the scratch assay is 2D not 3D and does not measure 'invasion'. Are the wounds created with the scratch assay really uniform? The Transwell assay in particular, is difficult to use with primary trophoblast given the large cell numbers required. The use of microfluidics (Li, Kamm Cancer Res 2017) to study invasion is a major step forward but is not mentioned although has even been used for trophoblast (Abbas J. Roy. Soc. Interface 2017).

Author's response: We have now included a statement addressing assay limitations in the discussion.

Reviewer's comment: Line 112: Unclear if treatment is done on the day prior to the assay. It is assumed this means 30 min before the scratch? Please make it clear.

Author's response: We have now clarified that the pretreatment is performed the day of the scratch assay (30 min prior to scratching plates).

Reviewer's comment: Line 124: Is imaging carried out at 37°C and 5% CO₂ with this imaging system?

Author's response: We have now clarified that the imaging takes place using an automated, time-lapse imager housed in a standard laboratory incubator maintained at 37°C, 5% CO₂, and 95% humidity.

Reviewer's comment: Line 178: The magnification 200x or 400x is specific to the microscope used by the authors. Is this a digital zoom? Can the authors provide information on the objective (5, 10, 20 X et.) or provide image dimensions in microns?

Author's response: We have edited the text to identify the objective used (20X) to obtain images and indicated that scale bars on images are 120 µm.

Reviewer's comment: Line 247: The authors discuss the potential for these assays to be used to identify therapeutic targets. This is over-stating the importance of their results for the reasons outlined in point 1 with the use of cell lines. Please remove this.

Author's response: This sentence has been removed from the manuscript.

Reviewer: 3

We thank Reviewer 3 for their careful and constructive evaluation of our manuscript and suggestions for improving our study.

Reviewer's comment: The authors performed Scratch Wound Assay to determine cell migration. However, several studies (e.g. Liang et al. Nature protocol 2007, D'Agostino et al. BMC Cell Biology 2015, Di et al. Sci Rep. 2015) recommended to use low concentration of FBS (e.g. 1% FBS) or mitomycin c to minimize cell proliferation. Normal growth media was used in this study and therefore, this result reflects cell proliferation rather than migration.

Author's response: The reviewer has made a key point that the authors feel that we have addressed by combining the scratch wound, proliferation, and invasion assays. We would anticipate that if treatment resulted in a difference in the scratch wound assay but not the proliferation assay, then one could assume that the treatment alters cell movement but not proliferation. However, if the treatment alters all three assays, then one could assume that differences in the scratch wound assay are a result of both changes to cell movement and proliferation. We have also provided readers a "note" in the scratch assay that an alternative lower concentration of FBS can be used to minimize confounding results with altering rates of cell proliferation.